



ABOUT THE CHINATOWN STITCH PROJECT

关于缝合华埠项目

The Chinatown Stitch
 重塑费城葛安街
 Reconnecting Philadelphia's
 Vine Street

The Vine Street Expressway has long divided Chinatown. The Chinatown Stitch: Reconnecting Philadelphia to Vine Street is a concept study looking at building a cap on top of the Vine Street Expressway between Broad Street and 8th Street. We are calling this cap "The Chinatown Stitch" because it could help reconnect Chinatown and Chinatown North by making the Vine Street Expressway less of a barrier.

The project team includes:

- The City of Philadelphia
- Philadelphia Chinatown Development Corporation (PCDC)
- Pennsylvania Department of Transportation (PennDOT)

长期以来，万安街高速公路一直将华埠社区一分为二。“缝合华埠：重新连接被万安街高速公路分离的华埠社区”是一项概念研究，目标是在万安街高速公路的上方进行封顶，研究重点是宽街至 8 街之间的路段。我们把这个封顶项目命名为“缝合华埠”，因为封顶区域可以通过减少万安街高速公路带来的障碍，帮助重新连接分离已久的华埠南北社区。

项目团队包括

- 费城市政府
- 费城华埠发展会 (PCDC)
- 宾夕法尼亚州运输部 (PennDOT)

What is a cap?

A cap is a platform on top of a highway that creates new space for parks, businesses, or housing.

什么是封顶?

“封顶”是指在高速公路的上方搭建平台，将此空间用于建设新的公园、商业用房或民用住宅。



Project Schedule 项目进度计划

2023

Community Engagement Phase 1: Co-Learning 社区参与阶段 1: 了解信息
<p>January 2023 – April 2023 Public Engagement began with a survey to understand the community's vision for the cap.</p> <p>Host Community Visioning Workshop #1.</p> <p>2023 年 1 月—2023 年 4 月 公众参与从开展调查开始，以了解社区对封顶的愿景。</p> <p>举行第 1 次社区愿景研讨会。</p>

Community Engagement Phase 2: Community Collaboration 社区参与阶段 2: 社区合作
<p>September 2023 Share design concepts for the cap and get feedback through Survey #2 and Community Visioning Workshop #2.</p> <p>November 2023 Share preferred design concept and final report for the Chinatown Stitch at a community open house.</p> <p>2023 年 9 月 通过第 2 次调查和第 2 次社区愿景研讨会，分享设计理念并获得反馈。</p> <p>2023 年 11 月 在社区开放日分享首选的设计理念和最终报告。</p>

2024

Design, Engineering, and Construction 设计、工程和施工
<p>Design and Engineering 设计和工程</p>

After 2026 年后

Design, Engineering, and Construction 设计、工程和施工
<p>City submits an application for federal funding through the Infrastructure Investment and Jobs Act (IIJA) Construction grant. Anticipated construction start date.</p> <p>费城市政府通过《基础设施投资和就业法案》(IIJA) 的建设拨款申请联邦资金。</p> <p>预计开工日期</p>

Funding

The City of Philadelphia has received funding from the following sources for this effort:

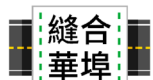
- \$1.8M in US Department of Transportation grant funding for community engagement
- \$2.2M matching funds from the City, PennDOT, the Knight Foundation and other local partners for planning and preliminary engineering.
- Funding for construction of a cap has not been secured

资金

费城市政府已从以下来源获得了这项工作的资金：

- 美国运输部拨款 180 万美元用于社区参与
- 费城市政府、PennDOT、Knight 基金会以及其他地方合作伙伴提供 220 万美元的配比基金用于规划和初步工程。
- 封顶区域的施工资金尚未到位





The Chinatown Stitch
重塑费城华安街
Reconnecting Philadelphia's
Vine Street

HISTORY AND PAST PLANNING

The Vine Street Expressway and local roads separate the Chinatown community, acting as a physical barrier between the Chinatown and Chinatown North neighborhoods. The community has made continued efforts to mitigate the expressway's negative impacts, which include fast-moving traffic, congestion, air pollution, and noise. There have been numerous studies and plans over the past 20 years that analyzed how to improve connections between Chinatown and Chinatown North and make the local Vine Street roads safer. The Chinatown Stitch builds on these plans and studies.

历史及过往规划

万安街高速公路和多条地方街道将华埠社区一分为二，在华埠南北社区之间建立了一道物理屏障。高速公路建成后，社区一直在努力减轻其带来的负面影响，包括车速快造成的安全隐患、交通拥堵、空气污染以及噪音。在过去的20年里，许多研究和计划就万安街高速公路的情况进行了分析，包括如何加强华埠南北社区之间的联系，并提高地方街道万安街的安全性。缝合华埠项目就是在这些研究和计划的基础上开展的。

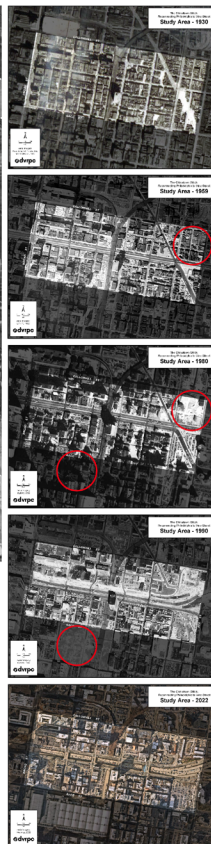


- (A) RAIL PARK
- (B) FOLKS ARTS-CULTURAL TREASURES CHARTER SCHOOL
- (C) UNDERGROUND ARTS
- (D) PHILLY HOUSE
- (E) ASIAN ARTS INITIATIVE
- (F) CRANE BUILDING
- (G) HOLY REDEEMER CHINESE CATHOLIC CHURCH

- (H) PHILADELPHIA CHINATOWN DEVELOPMENT CORP (PCDC)
- (I) CHINATOWN BSL STATION
- (J) CHINATOWN SQUARE
- (K) CHINATOWN ARCH
- (L) READING TERMINAL MARKET

- (A) 铁路公园
- (B) 民艺特许学校
- (C) 地下艺术中心
- (D) 费城之家
- (E) 亚洲艺术促进会
- (F) 鼎华居公寓

- (G) 华人天主教堂
- (H) 费城华埠发展会 (PCDC)
- (I) 宽街线华埠站
- (J) 华埠广场
- (K) 华埠拱门
- (L) 瑞汀车站市场

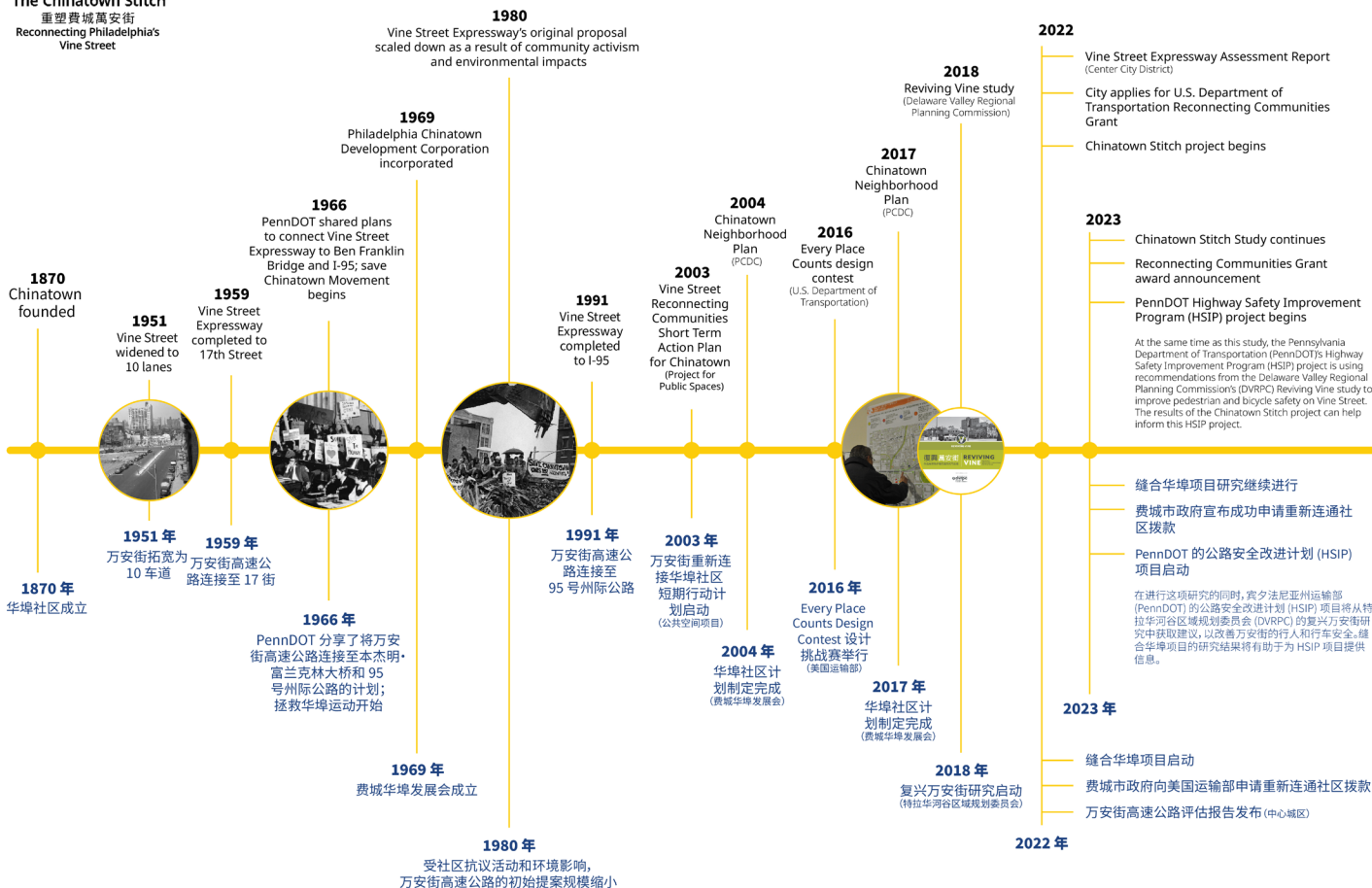




The Chinatown Stitch
重盟費城萬安街
Reconnecting Philadelphia's
Vine Street

HISTORY AND PAST PLANNING

历史及过往规划





The Chinatown Stitch
重塑費城萬安街
Reconnecting Philadelphia's
Vine Street

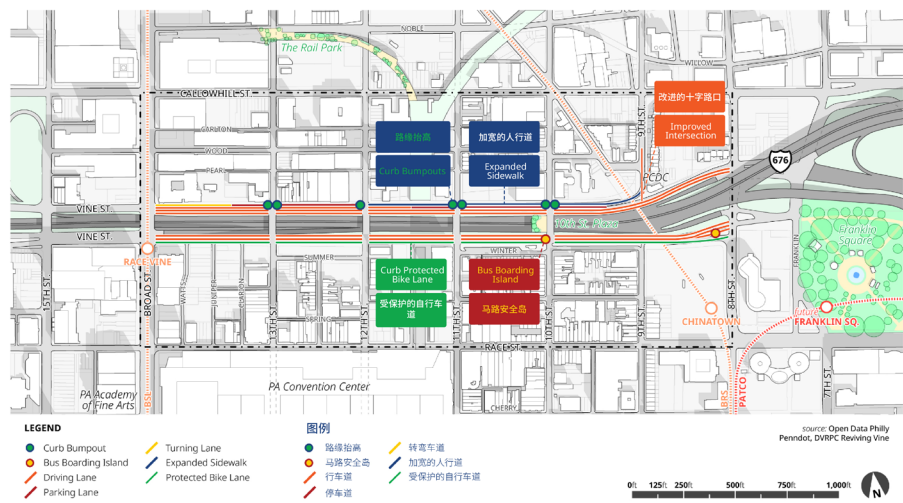
PA Department of Transportation Local Vine Street Improvements

美国宾夕法尼亚州交通部对当地万安街的改善

The Pennsylvania Department of Transportation (PennDOT) is implementing recommendations from the Delaware Valley Regional Planning Commission's (DVRPC) Reviving Vine: Improving Multimodal Connections on Vine Street study, which was published in 2018. Improvements will include a road diet, curb bump outs, and bike lanes.

宾夕法尼亚州交通部 (PennDOT) 正在实施特拉华河谷区域规划委员会 (DVRPC) 的建议计划“复兴万安:改善万安街的多模式连接”研究,该计划于 2018 年推出。改善措施将包括道路瘦身、路缘抬高和自行车道扩建。

Local Vine Street Improvements 当地万安街的改善



What is a road diet?

A “road diet” reduces the number of travel lanes or the width of a roadway to allow for effective safety improvements. Benefits include:

- Fewer travel lanes for vehicles
- Reduced vehicle speeds
- Shorter crossing distances for people walking
- Wider sidewalks
- A curb-protected bike lane

什么是道路瘦身?

“道路瘦身”旨在减少车道数量或降低道路宽度,从而有效提高安全性。好处包括:

- 机动车辆行驶车道减少
- 车速降低
- 行人过街距离缩短
- 人行道加宽
- 自行车道受路缘保护

Curb Bumpout 路缘抬高



Expanded Sidewalk 加宽的人行道

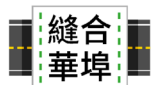


Protected Bike Lanes 受保护的自行车道



Bus Boarding Island 马路安全岛





The Chinatown Stitch
重盤費城萬安街
Reconnecting Philadelphia's
Vine Street

HIGHWAY CAP EXAMPLES

What is a Cap?

A cap is a platform on top of a highway that creates new space for parks, businesses, or housing and connects streets and communities separated by a highway. Cities across American have pursued capping projects to address the impacts of highway construction, like the division, removal, or disruption of established minority communities.

The Chinatown Stitch Study is analyzing the possibility of building partial or full caps across the Vine Street Expressway from Broad Street to 8th Street and Callowhill Street to Race Street.

高速公路封顶示例

什么是封顶?

“封顶”是指在高速公路的上方搭建平台，将此空间用于建设新的公园、商业用房或民用住宅，并连接被高速公路分离的街道和社区。美国各地的多个城市都已经推行了封顶项目，以消除高速公路建设带来的影响，比如现有少数民族社区的分裂、迁移或破坏。

“缝合华埠”研究旨在分析在万安街高速公路从宽街到 8 街及卡洛希尔街至礼士街之间的部分或全部路段上方进行封顶的可能性。

NAME: The Park at Penn's Landing
(under construction)
LOCATION: Philadelphia, PA
TYPE: Full Cap

项目名称: 佩恩码头公园 (建设中)
地点: 宾夕法尼亚州, 费城
类型: 全路段封顶



Photo before construction.



This park will bridge over I-95 between Walnut Street and Chestnut Street and slope downward to reconnect Old City to the Delaware River. This new park will include a new skating rink, water features, a play area, and a cafe.

这座公园将成为 95 号州际公路在核桃街和栗树街之间路段上方的桥梁，并且向下倾斜，将老城区与特拉华河重新连接起来。这个新公园将包括一个新的滑冰场、几处水景、一个游乐区和一个咖啡屋。

NAME: Klyde Warren Park
LOCATION: Dallas, TX
TYPE: Full Cap

项目名称: 克莱德·沃伦公园
地点: 德克萨斯州, 达拉斯
类型: 全路段封顶



Photo before construction.



A 5-acre deck park over Woodall Rodgers Freeway (Texas State Highway Spur 366), a recessed eight-lane freeway.

这座公园占地 5 英亩，建在伍德罗杰斯高速公路（德克萨斯州 366 号公路）上，这是一条地埋式八车道高速公路。

NAME: Cap at Union Station
LOCATION: Columbus, OH
TYPE: Partial Cap

项目名称: 联合车站封顶
地点: 俄亥俄州, 哥伦布
类型: 部分路段封顶



Photo before construction.



A 25,500 square-foot retail development over Interstate 670, reconnecting the downtown with the Short North arts and entertainment district.

该封顶区域位于 670 号州际公路上方，占地 25500 平方英尺，用于开发零售行业，旨在将市中心与短北艺术和娱乐区重新连接起来。

TWO BLOCK CAP

What do you like and dislike about this concept? Use green sticky notes to write what you like. Use yellow sticky notes to write what you dislike. Place your sticky notes on the map next to what you like or dislike.

- A** Active spaces along north-south cross streets
- B** Potential Rail Park connection to green space on cap
- C** Remove sound barrier wall for wider sidewalk
- D** Improve key intersection
- E** Explore pedestrian connection

两区封顶

对于这个理念，您喜欢哪些方面，不喜欢哪些方面？请在绿色的便贴上写下您喜欢的方面，在黄色的便贴上写下您不喜欢的方面。把您的便签贴在地图上对应的位置。

- A** 沿南北向十字街设置活动空间
- B** 铁路公园以后可能连接至顶盖上的绿地
- C** 拆除隔音墙，加宽人行道
- D** 改进关键交叉路口
- E** 开发行人通道



THREE BLOCK CAP: FULL COVERAGE

What do you like and dislike about this concept?
Use green sticky notes to write what you like. Use
yellow sticky notes to write what you dislike. Place
your sticky notes on the map next to what you like
or dislike.

- A** Active spaces along north-south cross streets
- B** Potential Rail Park connection to green space on cap
- C** Remove sound barrier wall for wider sidewalk
- D** Improve key intersection
- E** Explore pedestrian connection

三区封顶: 完全覆盖

对于这个理念,您喜欢哪些方面,不喜欢哪些方面?请在
绿色的便贴上写下您喜欢的方面,在黄色的便贴上写下
您不喜欢的方面。把您的便签贴在地图上对应的位置。

- A** 沿南北向十字街设置活动空间
- B** 铁路公园以后可能连接至顶盖上的绿地
- C** 拆除隔音墙,加宽人行道
- D** 改进关键交叉路口
- E** 开发行人通道



THREE CAP BLOCK: VINE STREET WESTBOUND TO THE MIDDLE

What do you like and dislike about this concept? Use green sticky notes to write what you like. Use yellow sticky notes to write what you dislike. Place your sticky notes on the map next to what you like or dislike.

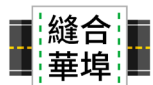
- A** Re-locate westbound Vine Street over highway cap
- B** Shorter crossing distance
- C** Active spaces along north-south cross streets
- D** Potential Rail Park connection to green space on cap
- E** Convention Center ramp access
- F** Remove sound barrier wall for wider sidewalk
- G** Improve key intersection
- H** Explore pedestrian connection

三区封顶: 万安街西行线下移

对于这个理念, 您喜欢哪些方面, 不喜欢哪些方面? 请在绿色的便贴上写下您喜欢的方面, 在黄色的便贴上写下您不喜欢的方面。把您的便签贴在地图上对应的位置。

- A** 将万安街的西行线重新迁至公路顶盖
- B** 缩短过街距离
- C** 沿南北向十字街设置活动空间
- D** 铁路公园以后可能连接至顶盖上的绿地
- E** 会议中心 匝道通道
- F** 拆除隔音墙, 加宽人行道
- G** 改进关键交叉路口
- H** 开发行人通道





The Chinatown Stitch
重塑費城萬安街
Reconnecting Philadelphia's
Vine Street

PARK AMENITIES

Which park amenities would you like to see on top of the cap? Use dot stickers to vote on your top three.

公园设施

您希望在封顶区域看到哪些公园设施?使用圆点贴纸选出您最希望看到的三种设施。

Picnic/Seating Area

野餐/休息区



A grid of 48 white circular dot stickers arranged in 8 rows and 6 columns, used for voting.

Community Garden

社区花园



A grid of 48 white circular dot stickers arranged in 8 rows and 6 columns, used for voting.

Playground

游乐场



A grid of 48 white circular dot stickers arranged in 8 rows and 6 columns, used for voting.

Athletic Courts

(for basketball, soccer, tennis, pickleball, etc.)

运动场

(篮球、足球、网球、匹克球等)



A grid of 48 white circular dot stickers arranged in 8 rows and 6 columns, used for voting.

Exercise Space

(for tai chi, dance, or yoga)

锻炼空间

(太极、舞蹈或瑜伽)



A grid of 48 white circular dot stickers arranged in 8 rows and 6 columns, used for voting.

Other:

Write your idea on a sticky note



其他:

请将您的想法写在便签上

Dogpark

宠物公园



A grid of 100 light blue circles arranged in 10 rows and 10 columns, intended for writing ideas.

Performance Stage

(Small Amphitheater for concerts)

舞台或小型剧场

(音乐表演)



A grid of 100 light blue circles arranged in 10 rows and 10 columns, intended for writing ideas.

Game Tables

(for ping pong, chess, or checkers)

游戏桌

(乒乓球、国际象棋或跳棋)



A grid of 100 light blue circles arranged in 10 rows and 10 columns, intended for writing ideas.

Market Space

(for selling food or crafts)

市场空间

(销售食品或手工艺品)



A grid of 100 light blue circles arranged in 10 rows and 10 columns, intended for writing ideas.

Water Feature

水景



A grid of 100 light blue circles arranged in 10 rows and 10 columns, intended for writing ideas.

