

August 30, 2023

To: The Philadelphia Art Commission
1515 Arch Street
12th Floor
Philadelphia, PA 19102

Re: SEPTA 19th Street Station ADA Improvements – Cover Letter

To Whom it may concern:

WSP and subconsultant Sowinski Sullivan Architects have been contracted by SEPTA to provide design and construction related services for the installation of new street level elevators and stair head houses at the 19th street station as part of their effort to improve ADA accessibility across their system.

The station is configured with two below grade side platforms with two stair entrances to each platform, which results with one stair entrance to the station at each intersection of 19th and Market Streets. The original stair entrance guard rails are still intact at the north side of Market Street, but the stair entrance guards on the south end of Market Street were previously removed prior to the railings being formally recognized for their historical significance in 2018.

The scope of work for this project includes the construction of an elevator at the west end of each of the westbound and eastbound platforms to provide an accessible route from the streetscape above to each of the boarding platforms. Additionally, each of the existing stair entrances are proposed to receive new headhouse structures.

A key goal of the headhouse structures is to improve upon the public safety and security of the station, two considerations which are being addressed by incorporating a locking gate at street level as part of the headhouse structures to allow for the station to be secured at street level as opposed to secured below grade when it is out of service. The general design approach that has been developed in coordination with the Philadelphia Historical Commission preserves the existing historic guardrails in their entirety and looks to showcase them as part of the design by securing the headhouse with open-air stainless steel aircraft cable spanning between structural stainless steel columns supporting a standing seam roof above. The roof form has been developed to deter pedestrians from scaling the roof structure during parade or similar events. The stairs without the historic guardrails have taken a similar design approach, but aluminum framed glass block panels have been integrated with the design in the locations where the original historic guardrails would have been constructed.

The materials chosen for this project were selected out of consideration for durability, ease of maintenance, pedestrian safety, and limiting the headhouse structure visual impact on the existing streetscape and adjacent structures. The material palette consists of concrete with a stone veneer, painted structural steel, glass block, stainless steel air craft cable, and vandal resistant storefront glazing. The size and proportion of the elevator head house is driven by the requirements of a transit grade hydraulic type elevator, SEPTA's preferred type of elevator for new construction.

Currently public art is not planned to be included with this project due to the aggressive nature of the schedule for design and construction but there are ample opportunities for implementing public art as part of the other planned projects for the Station. Additionally, none of the planned improvements at 19th Street preclude the installation of a public art installation at a later date.

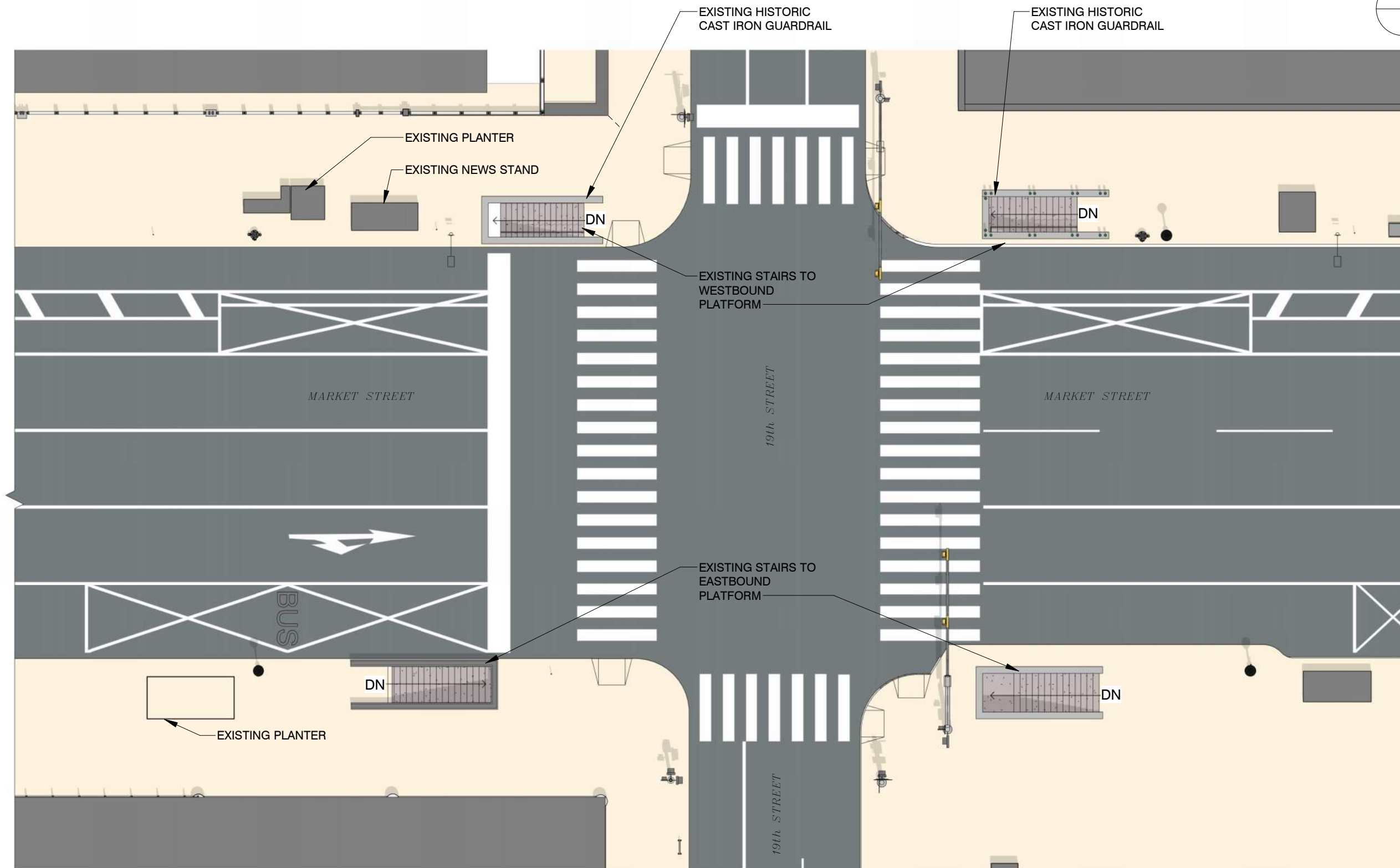
Please feel free to contact me with any questions about the project in advance to the meeting on September 13th. We look forward to discussing the project with the Philadelphia Art Commission.

Sincerely,

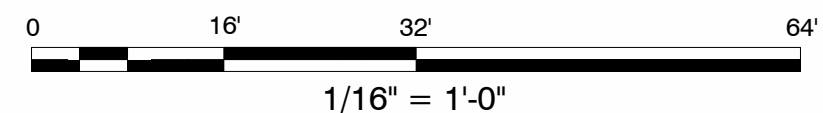
Greg Mastalerz

Cc: Jack Mcelwee, SEPTA
Alex Reiner, SEPTA
Will Kunkle, SEPTA
Heather Wilkerson, WSP
Emily Khalid, WSP
Karl Schreiter, WSP

19th STREET STATION ADA IMPROVEMENTS



1 STREET LEVEL EXISTING PLAN
1/16" = 1'-0"

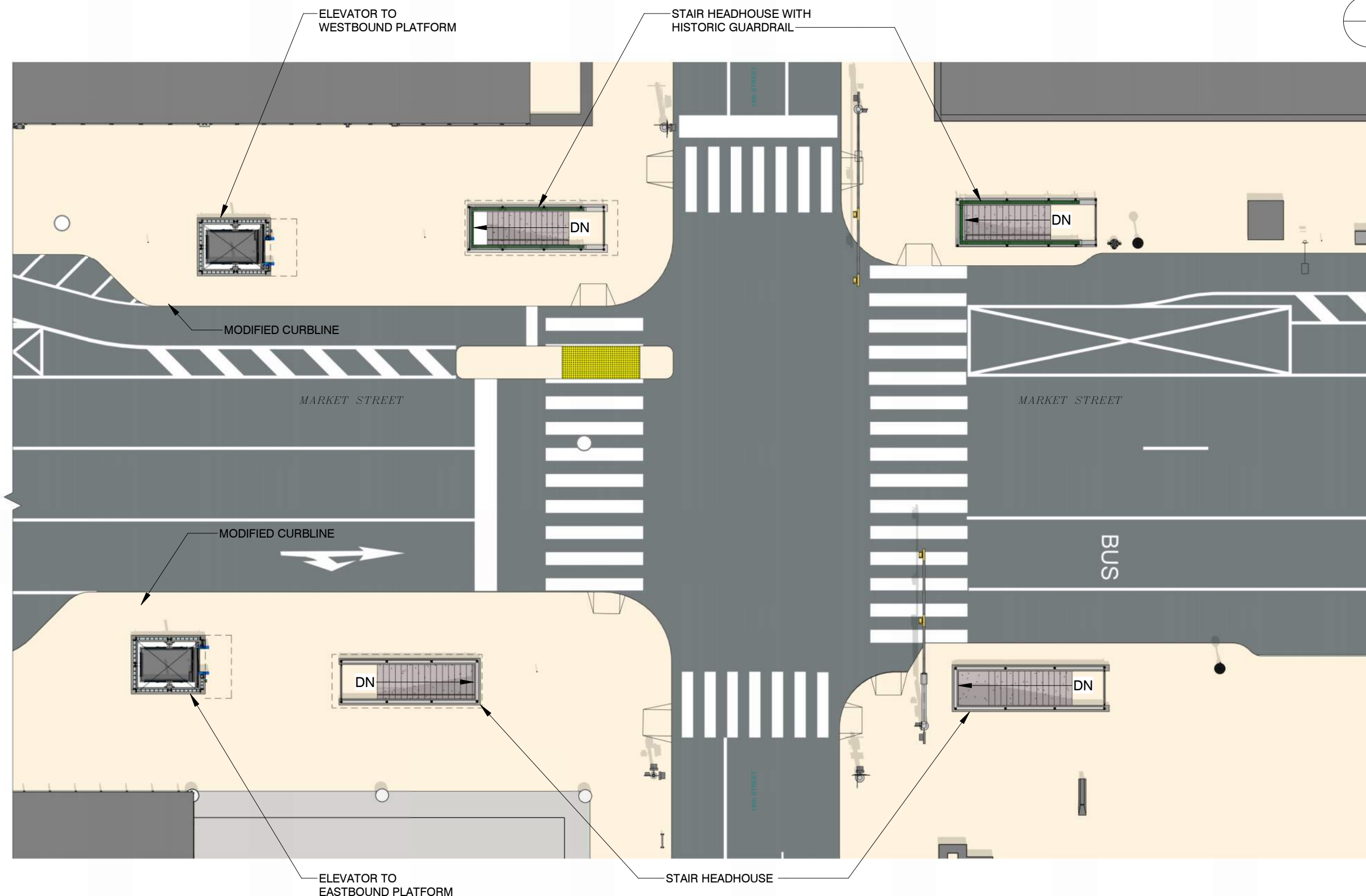


**SOWINSKI
SULLIVAN**

date:
09/06/2023

SK-01

19th STREET STATION ADA IMPROVEMENTS



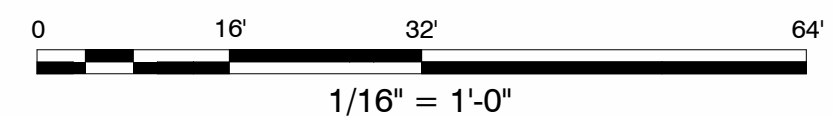
1 PROPOSED STREET LEVEL PLAN
1/16" = 1'-0"



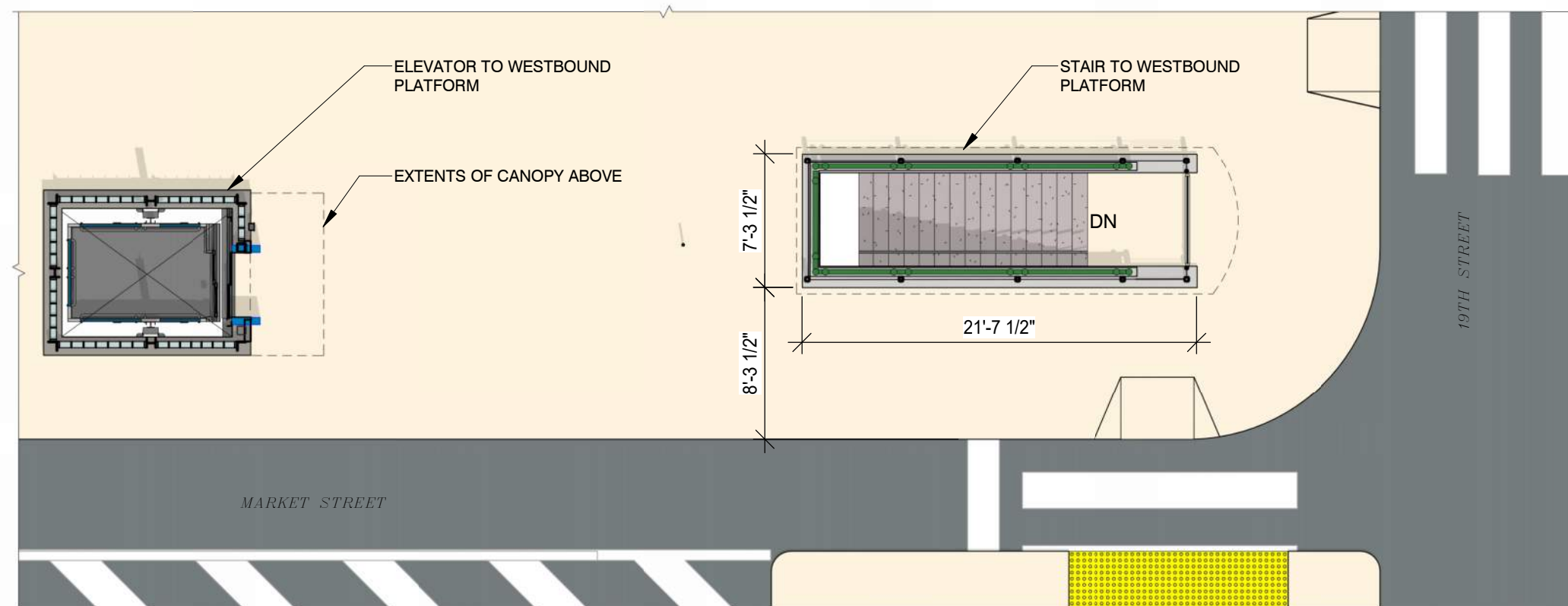
**SOWINSKI
SULLIVAN**

date:
09/06/2023

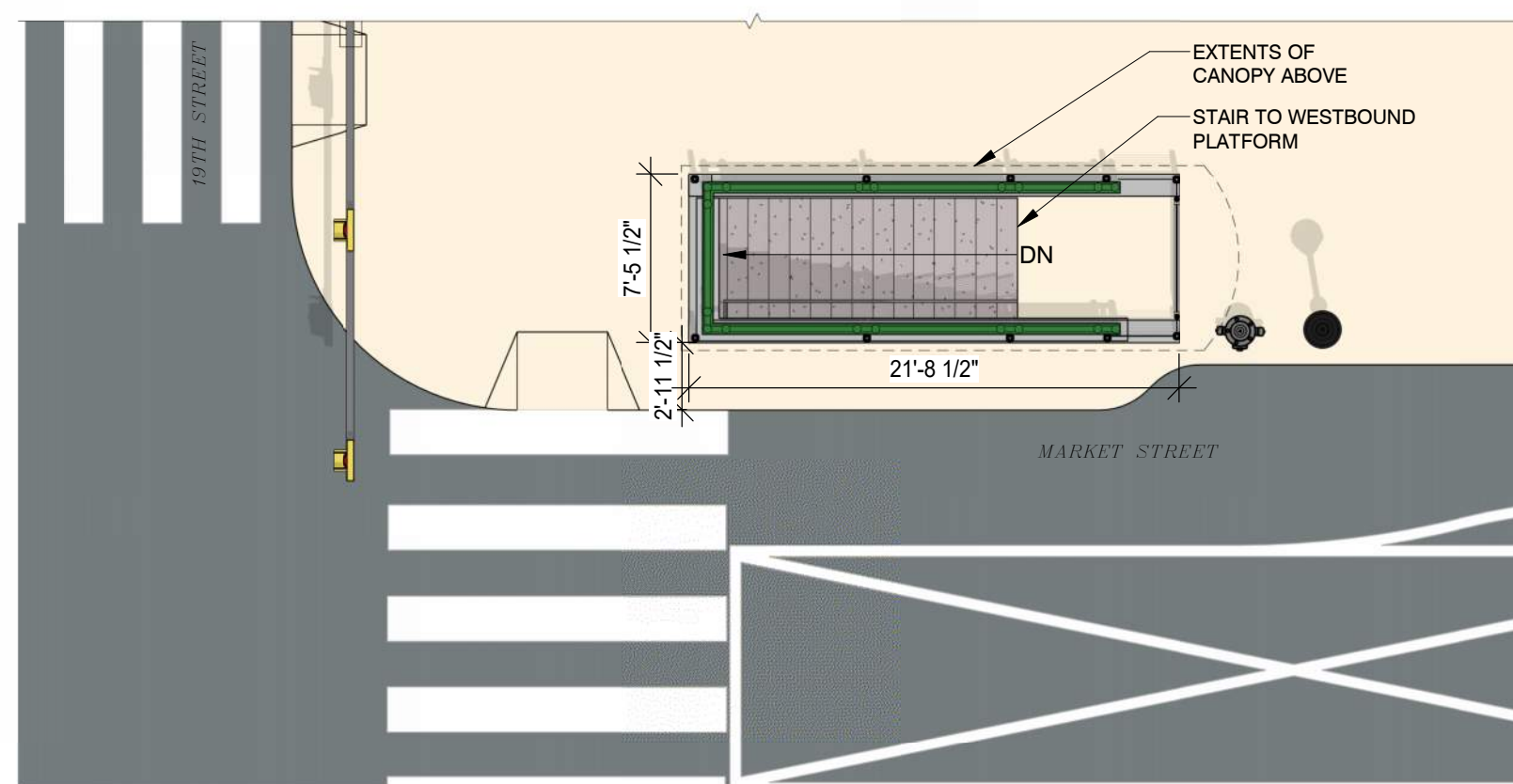
SK-02



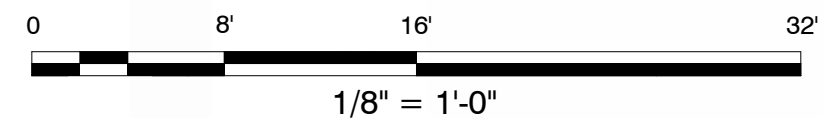
19th STREET STATION ADA IMPROVEMENTS



1 ENLARGED NORTHWEST CORNER HEADHOUSE & ELEVATOR PLAN
1/8" = 1'-0"



2 ENLARGED NORTHEAST CORNER HEADHOUSE
1/8" = 1'-0"

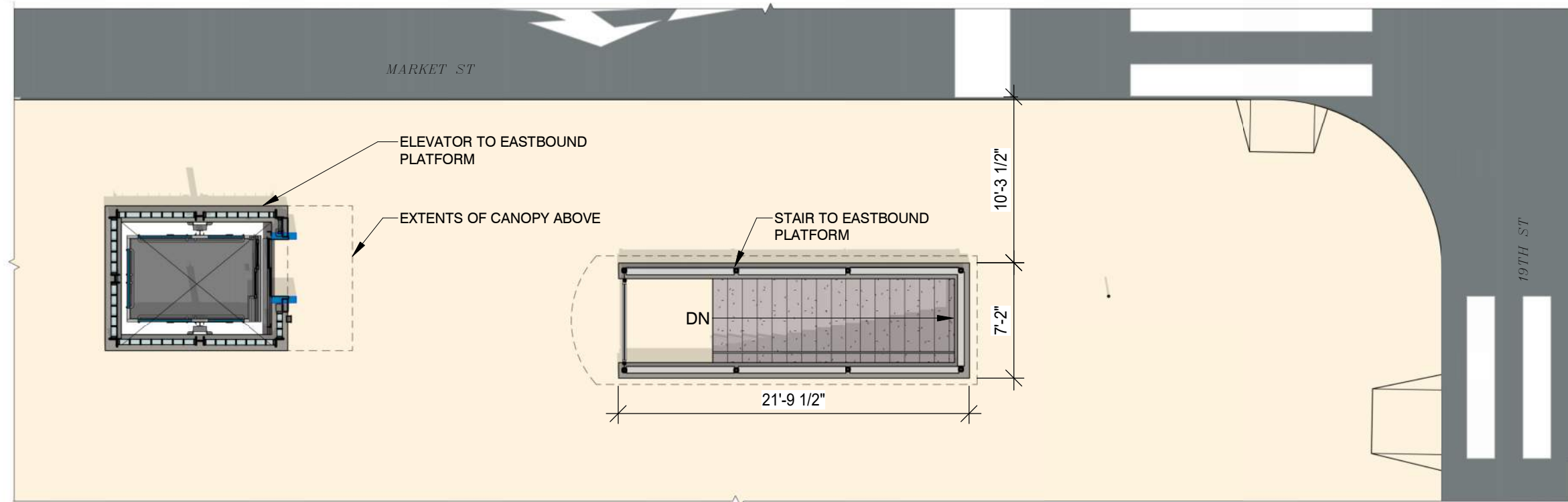


SOWINSKI
SULLIVAN

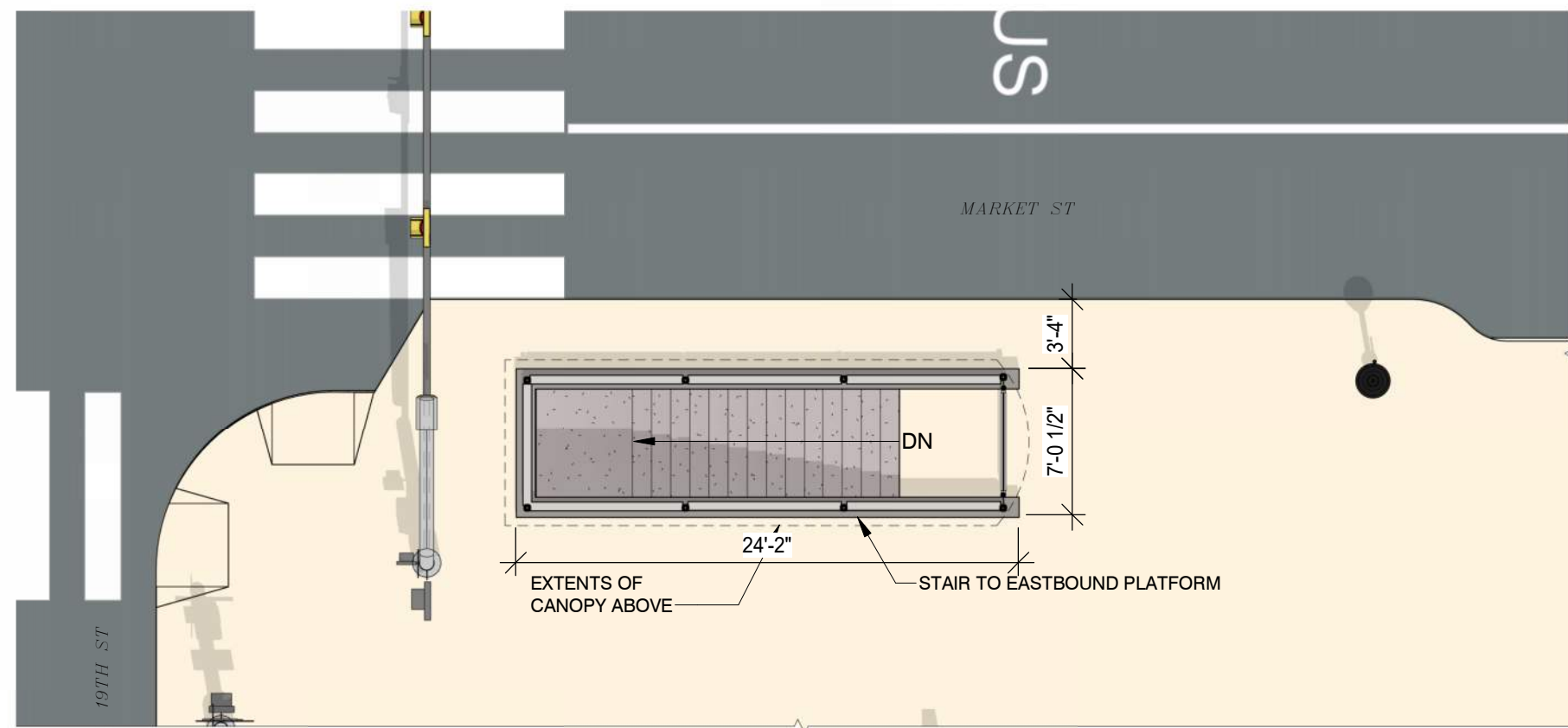
date:
09/06/2023

SK-03

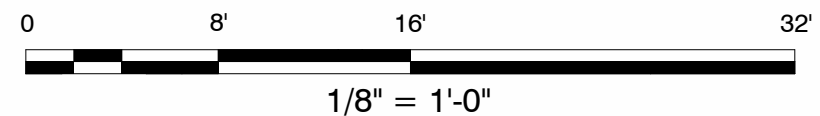
19th STREET STATION ADA IMPROVEMENTS



1 ENLARGED SOUTHWEST CORNER HEADHOUSE & ELEVATOR PLAN
1/8" = 1'-0"



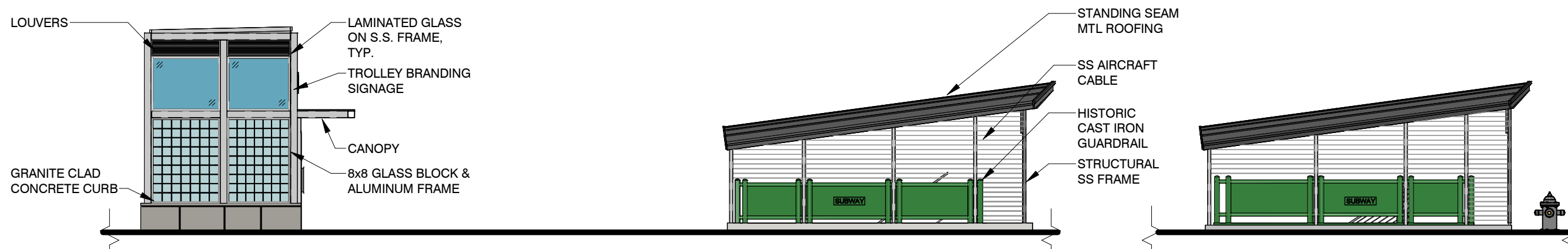
2 ENLARGED SOUTHEAST CORNER HEADHOUSE PLAN
1/8" = 1'-0"



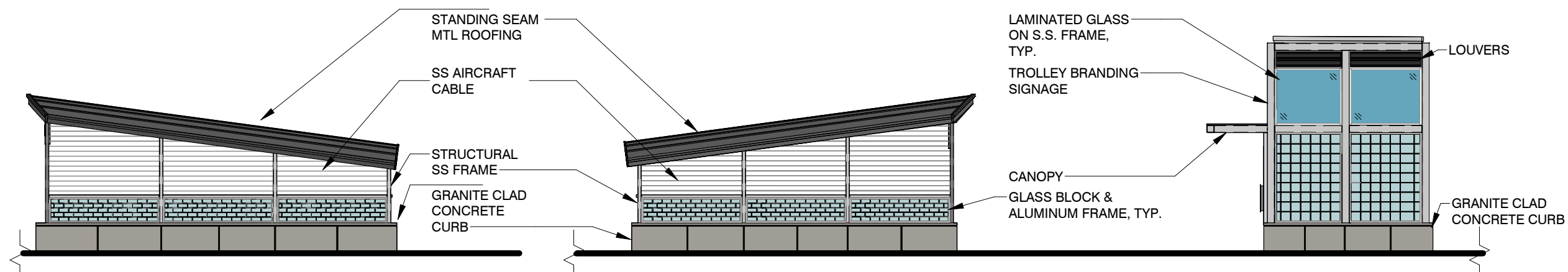
**SOWINSKI
SULLIVAN**

date:
09/06/2023

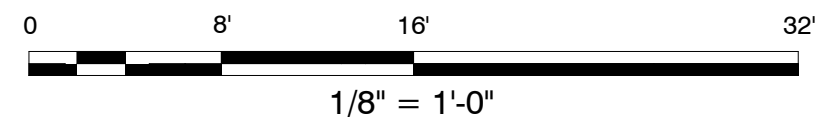
SK-04



4 WESTBOUND STAIR & ELEVATOR HEADHOUSES- SOUTH SIDE ELEVATION
1/8" = 1'-0"



2 EASTBOUND STAIR & ELEVATOR HEADHOUSES- NORTH SIDE -ELEVATION
1/8" = 1'-0"



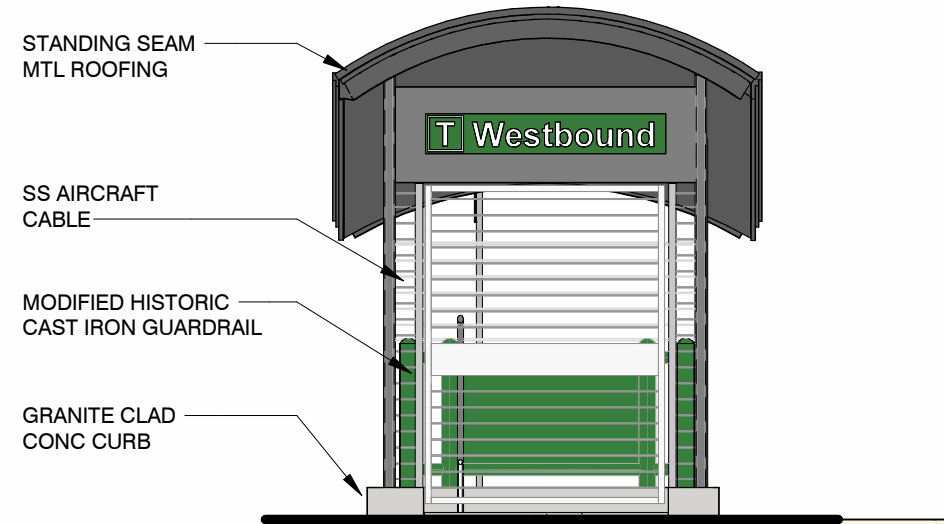
SOWINSKI
SULLIVAN

date:
09/06/2023

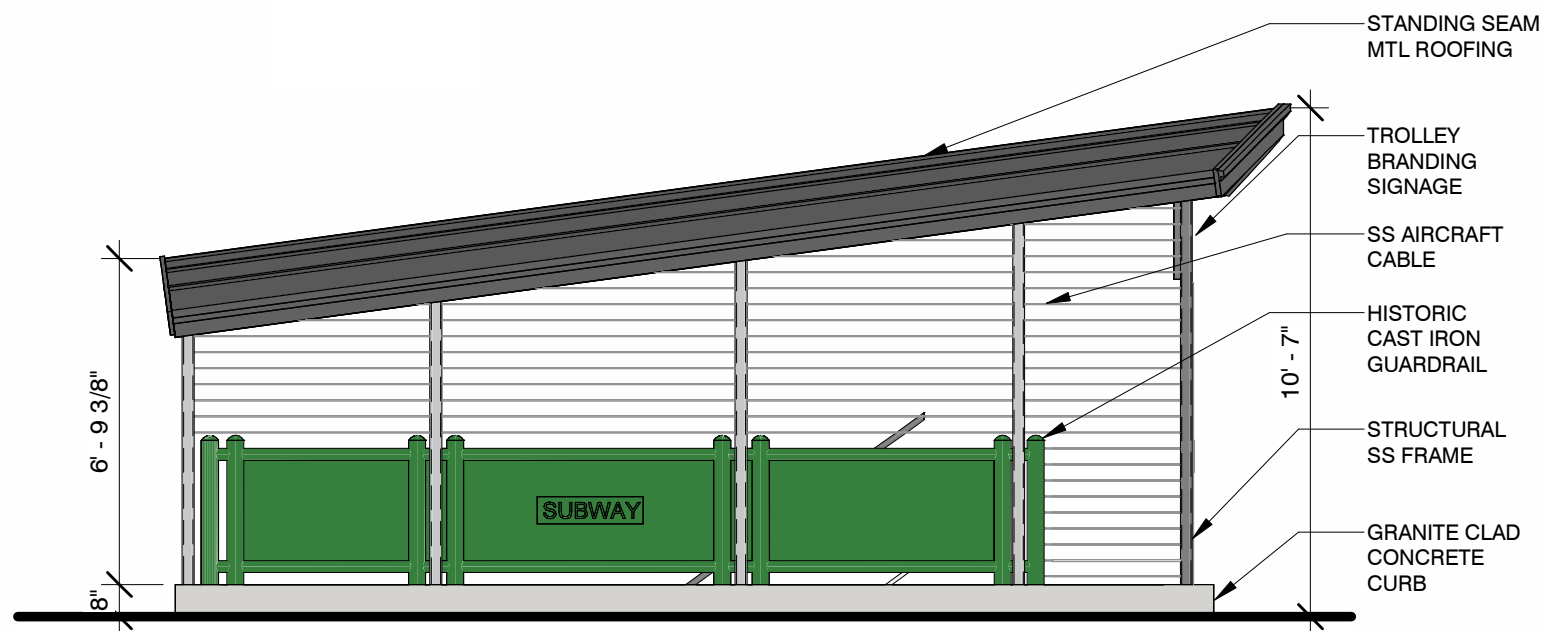
SK-05



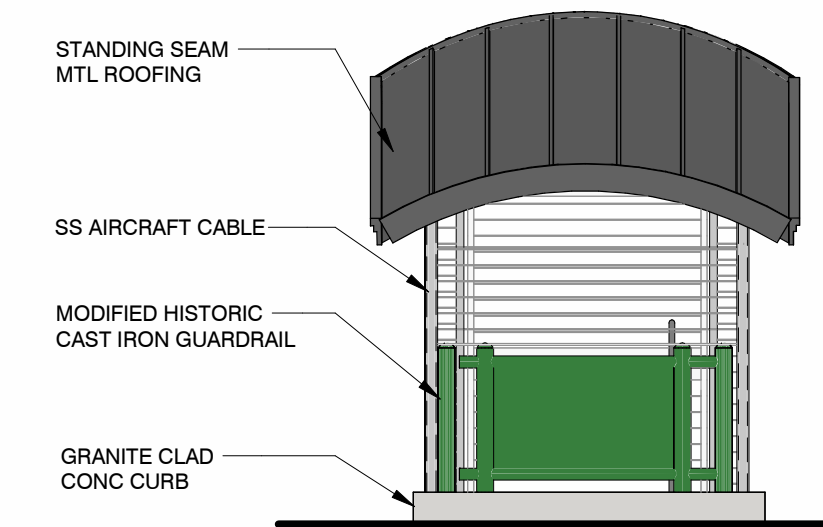
1 WESTBOUND STAIR HEADHOUSE MASSING



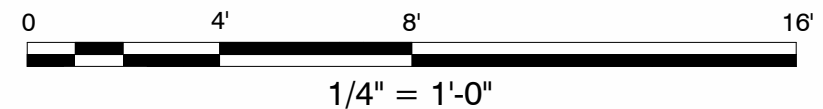
2 WESTBOUND STAIR FRONT ELEVATION
1/4" = 1'-0"

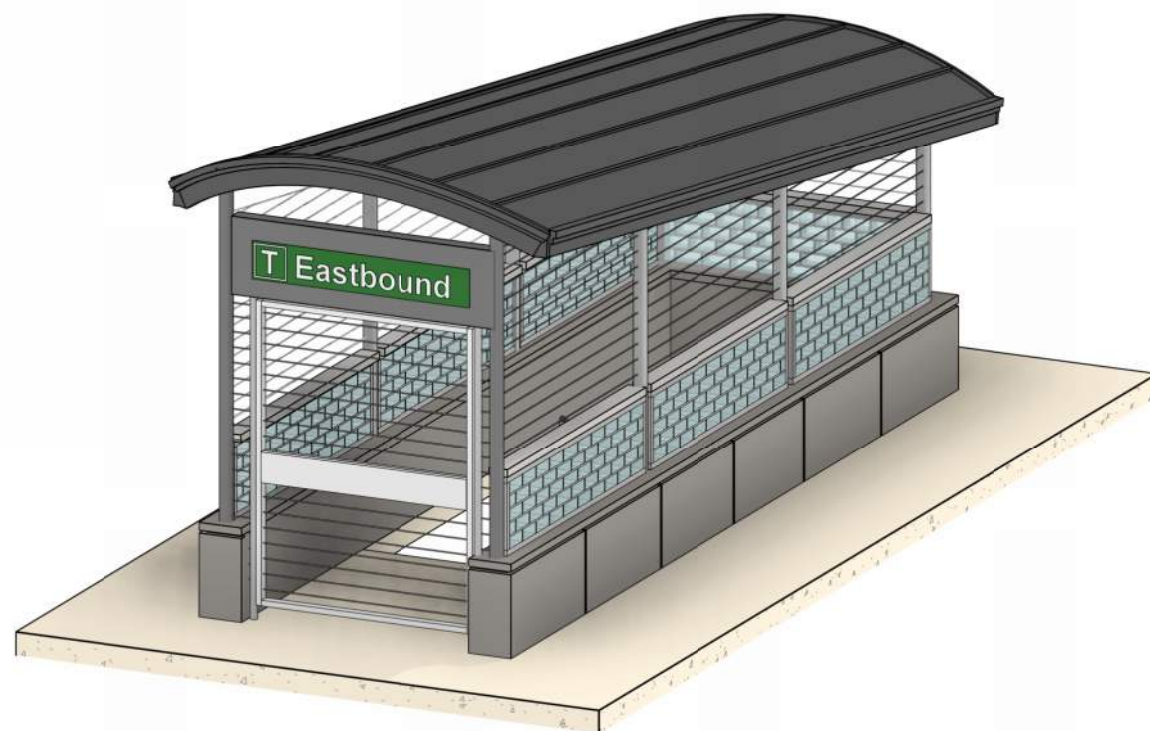


3 WESTBOUND STAIR - SOUTH ELEVATION
1/4" = 1'-0"

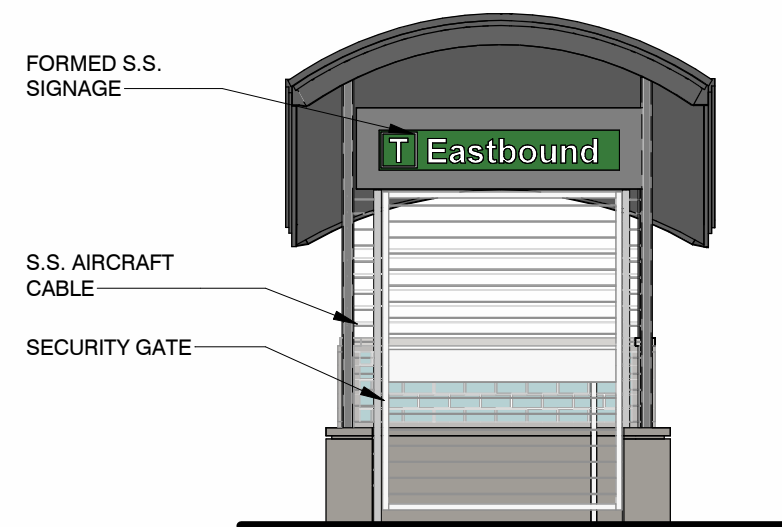


4 WESTBOUND STAIR - REAR ELEVATION
1/4" = 1'-0"

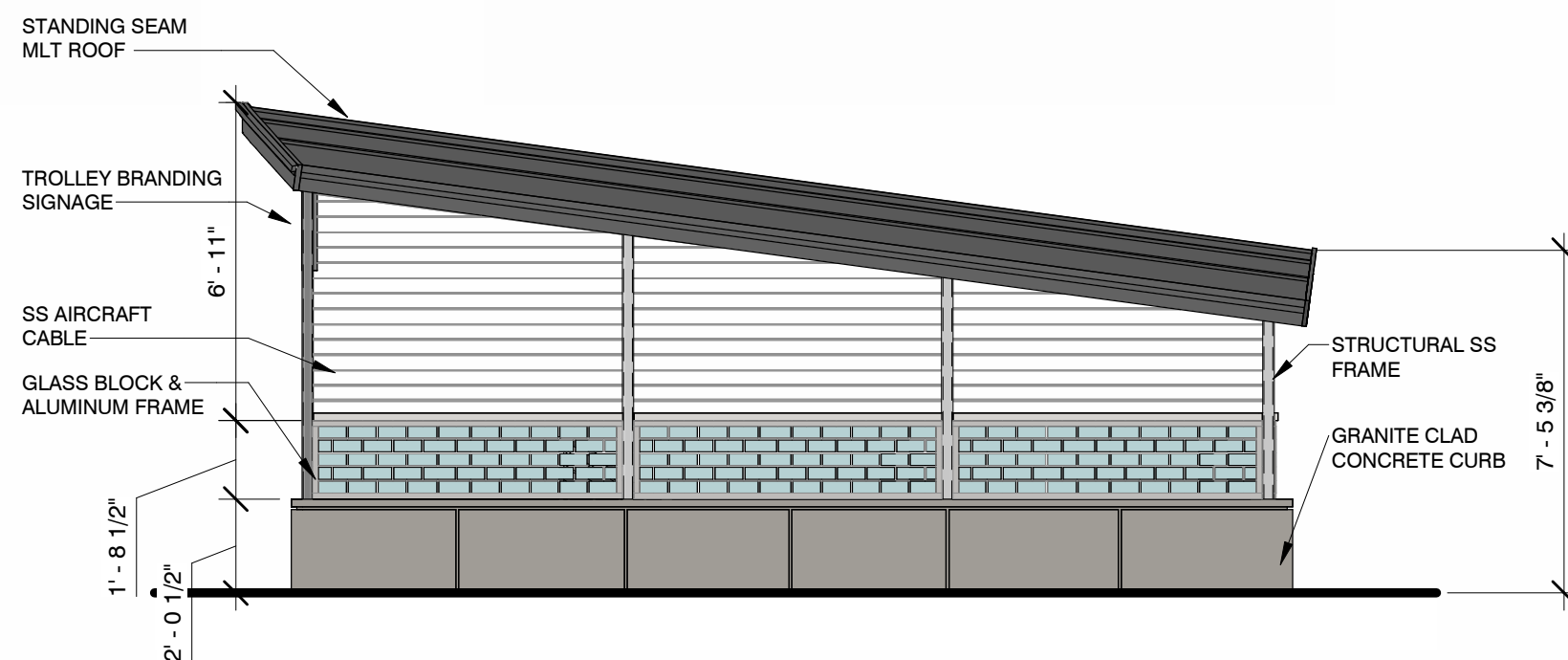




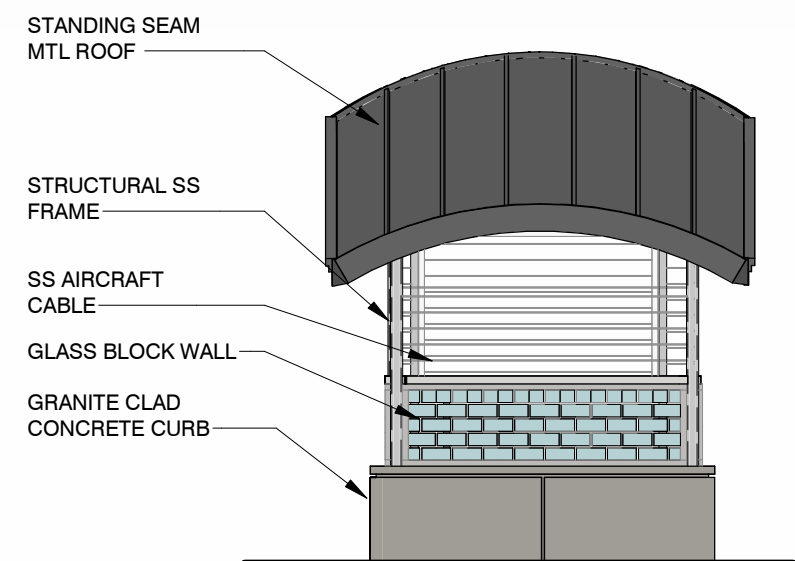
1 EASTBOUND STAIR HEADHOUSE MASSING



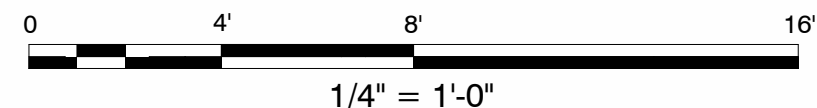
2 EASTBOUND STAIR - FRONT ELEVATION
1/4" = 1'-0"



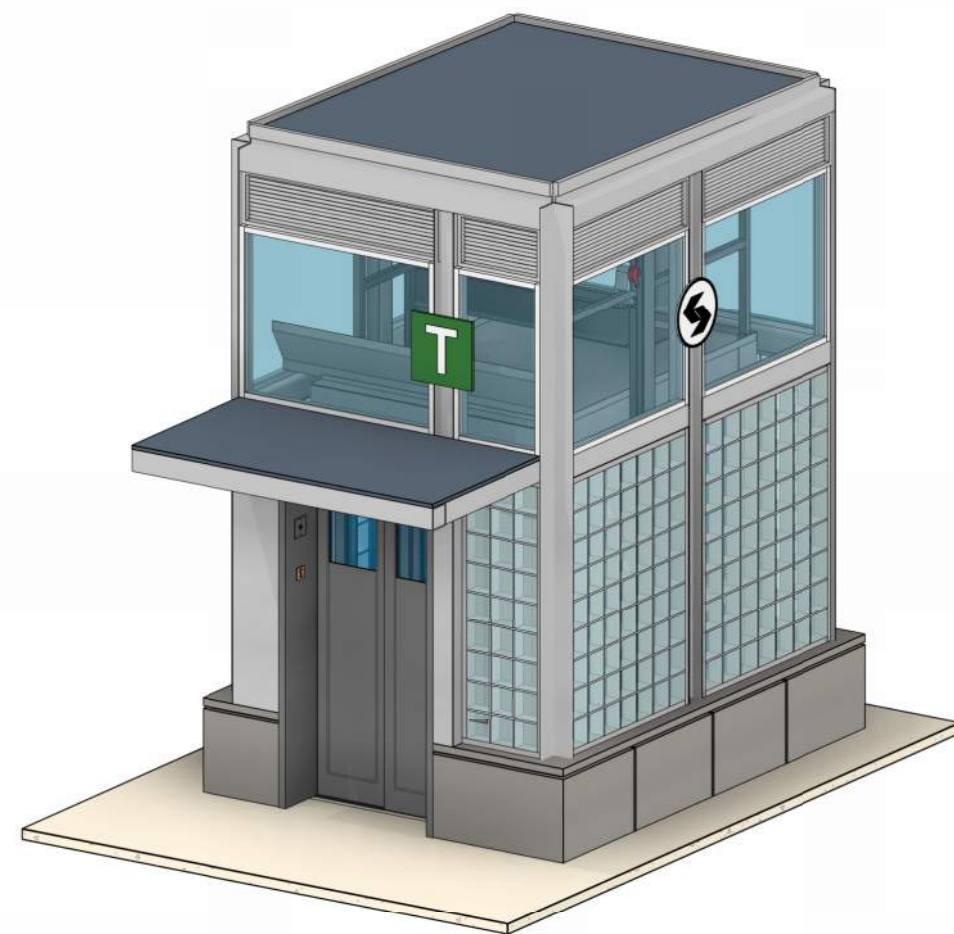
3 EASTBOUND STAIR - SIDE ELEVATION
1/4" = 1'-0"



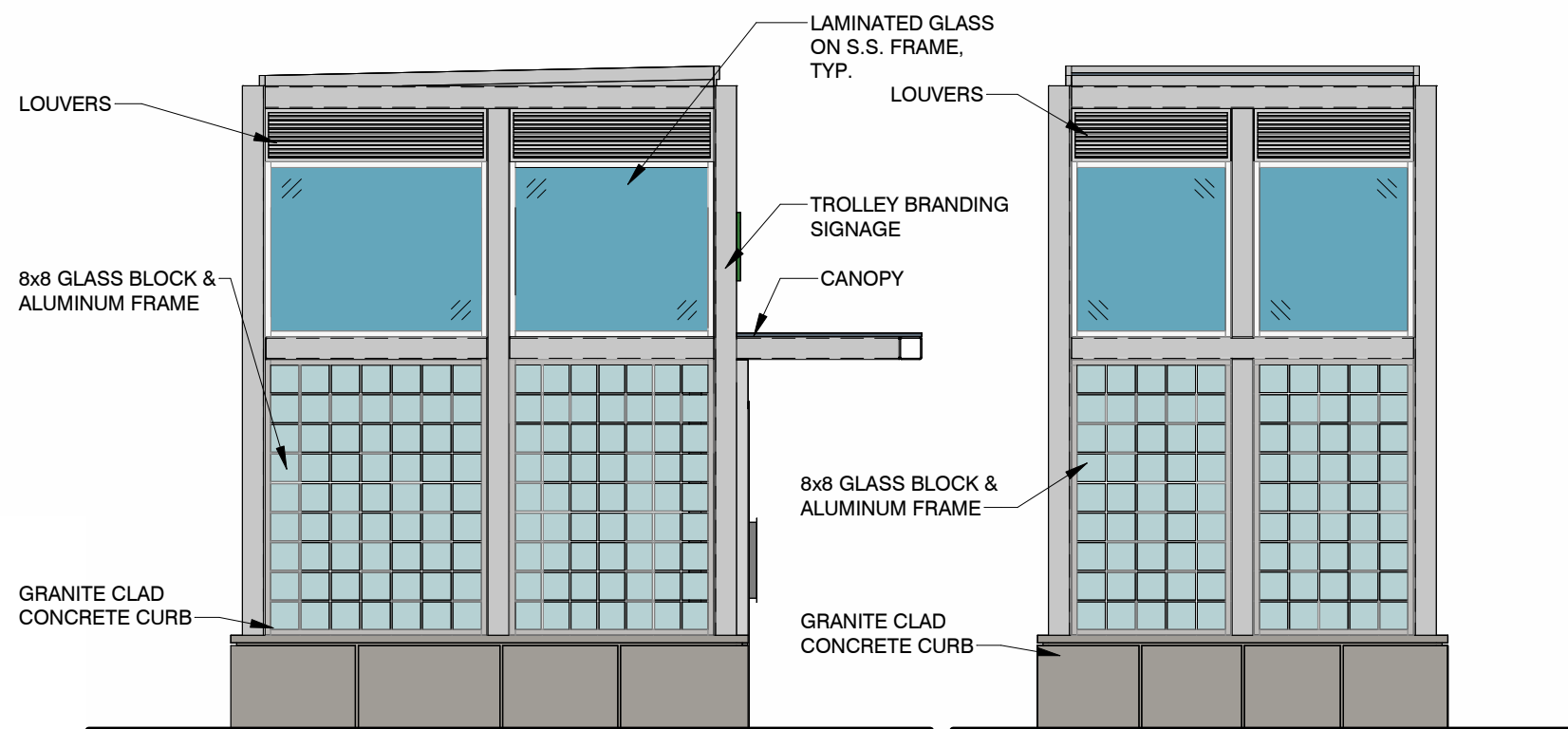
4 EASTBOUND STAIR - REAR ELEVATION
1/4" = 1'-0"



19th STREET STATION ADA IMPROVEMENTS

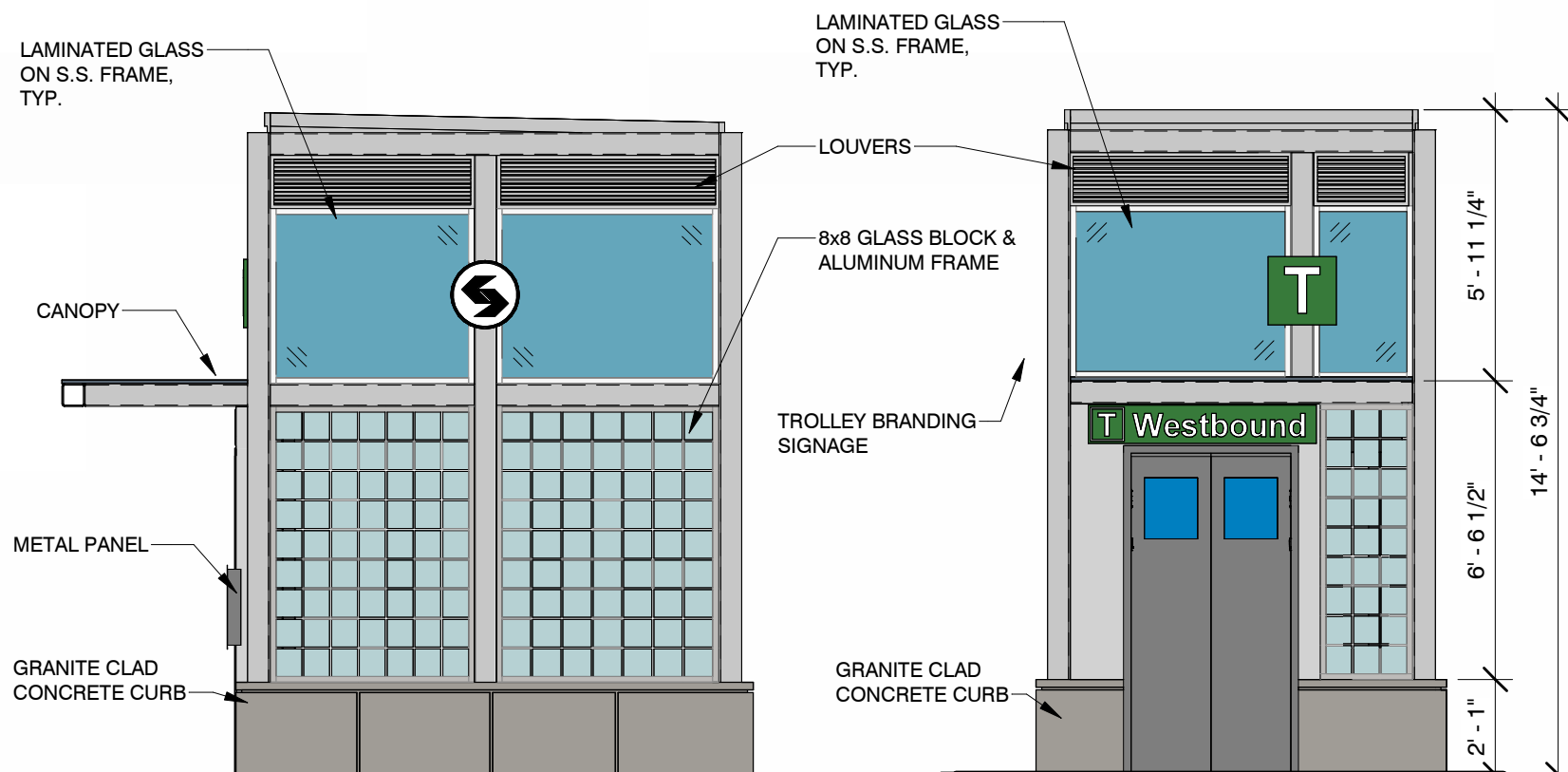


1 NW ELEVATOR HEADHOUSE MASSING



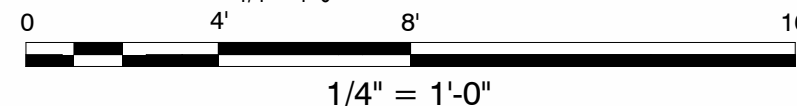
2 NW ELEVATOR - SOUTH ELEVATION
1/4" = 1'-0"

4 NW ELEVATOR - WEST ELEVATION
1/4" = 1'-0"



3 NW ELEVATOR- NORTH ELEVATION
1/4" = 1'-0"

5 NW ELEVATOR - EAST ELEVATION
1/4" = 1'-0"



SOWINSKI
SULLIVAN

date:
09/06/2023

SK-08



AERIAL VIEW LOOKING EAST



19th STREET
STATION ADA
IMPROVEMENTS



date:
09/06/2023

SK-09



AERIAL VIEW LOOKING NORTHWEST



19th STREET
STATION ADA
IMPROVEMENTS



date:
09/06/2023

SK-10



AERIAL VIEW LOOKING SOUTHWEST



19th STREET
STATION ADA
IMPROVEMENTS



date:
09/06/2023

SK-11

19th STREET STATION ADA IMPROVEMENTS



VIEW OF EASTBOUND ELEVATOR LOOKING NORTHWEST



**SOWINSKI
SULLIVAN**

date:
09/06/2023

SK-12



VIEW OF SOUTHWEST CORNER LOOKING SOUTHWEST



19th STREET
STATION ADA
IMPROVEMENTS



date:
09/06/2023

SK-13



VIEW OF NORTHWEST CORNER LOOKING NORTHWEST

19th STREET
STATION ADA
IMPROVEMENTS

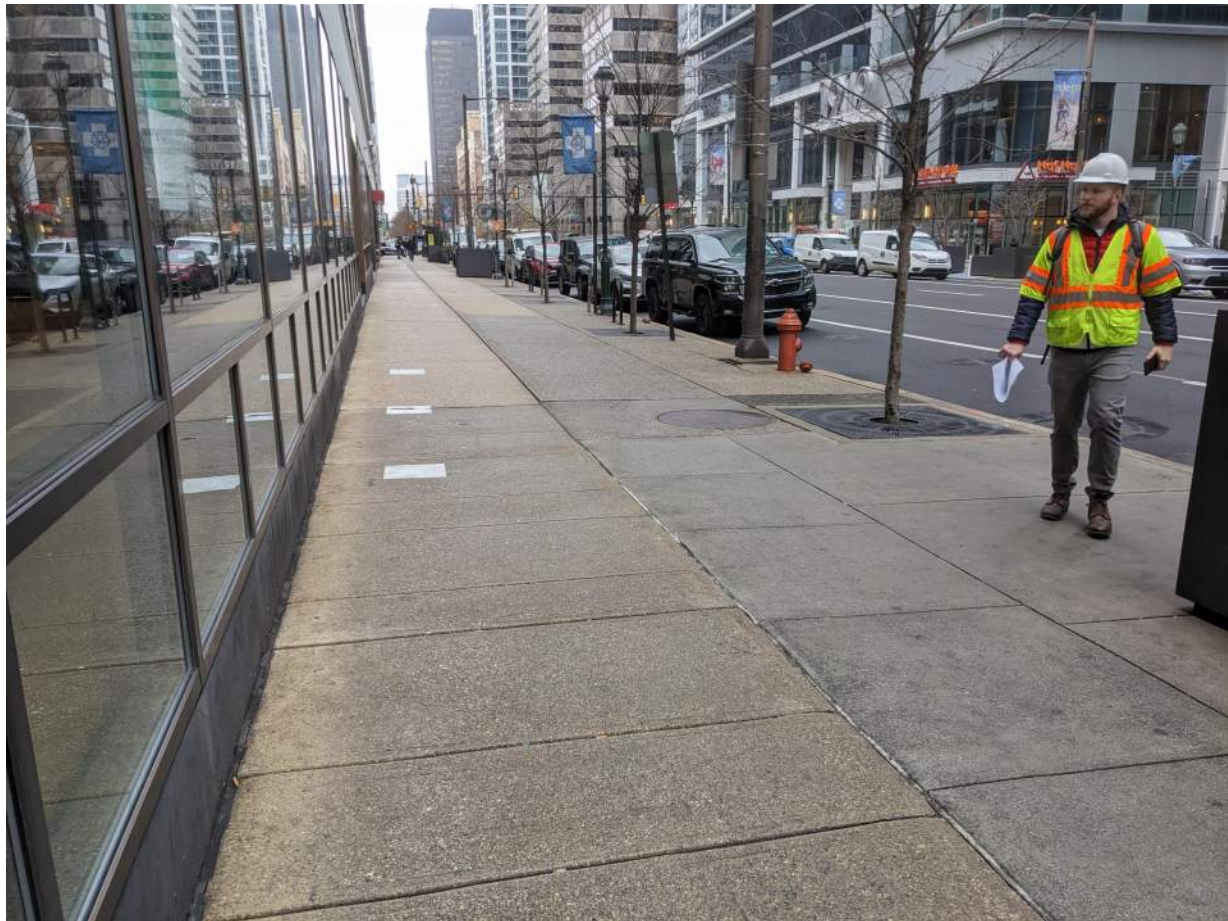


SOWINSKI
SULLIVAN

date:
09/06/2023

SK-14





19th STREET STATION ADA IMPROVEMENTS



SOWINSKI
SULLIVAN

date:

09/06/2023

SK-16

19th STREET
STATION ADA
IMPROVEMENTS

STANDING SEAM
MTL ROOF

SS AIRCRAFT
CABLE

GLASS BLOCK
WITHIN ALUM
FRAME

GRANITE CLAD
CONC. CURB



PROPOSED MATERIALS



SOWINSKI
SULLIVAN

date:
09/06/2023

SK-17