



August 30, 2023

Philadelphia County  
S.R. 0095, Section CAP  
I-95 Central Access Philadelphia CAP project

Mr. Alex Smith  
Philadelphia Art Commission  
One Parkway, 13th Floor  
1515 Arch Street  
Philadelphia, PA 19102

Dear Mr. Smith,

The Pennsylvania Department of Transportation (PennDOT) is pleased to submit this letter, requesting time at the September 13th meeting of the Philadelphia Art Commission to present the **Proposed Temporary Relocation of Irish and Scottish Memorials** for the Commission's review and conceptual approval. PennDOT oversees the design and construction of the I-95 Central Access Philadelphia (CAP) Project at Penn's Landing which supports the proposed new Penn's Landing Park, a new 12-acre park that will span I-95 and Columbus Boulevard and connect the city to the river. This is a hugely significant step towards the realization of the Master Plan's ambitious goals and a once-in-a-generation opportunity to connect Philadelphia to its waterfront.

As part of the ongoing effort to minimize movement and work in alignment with the preferences of the Irish and Scottish Memorial Boards, the original design intention was to construct the new cap around the existing Irish and Scottish Memorials. Following the 95/CAP construction contract award in early 2023, PennDOT's contractor has presented an alternative option for a temporary relocation of the Memorials to an undeveloped site at the corner of Spruce Street and the 38<sup>th</sup> Parallel. This relocation option is anticipated to save approximately nine (9) months of construction time and city impacts, and to mitigate potential risks to the Memorials by placing them away from a heavy construction zone. The range of costs associated with the temporary relocation of the memorials is approximately \$270,000 to \$300,000.

We wish to emphasize that this site, situated at the intersection of Spruce Street and the 38th Parallel, is under the ownership of the City of Philadelphia and managed by its Department of

Parks & Recreation. The development of the proposed temporary option was the result of several months of meticulous due diligence and coordination efforts involving PennDOT, the City, the Irish and Scottish Memorial Boards as well as the Society Hill Civic Association and Foglietta Plaza groups.

It is important to note that both PennDOT and the City were active participants in the Society Hill Civic Association-led planning process for the *Reimagining Foglietta Plaza*, as outlined in the Olin plan from February 2022. This planning process underscores our understanding of the future intent for this corner location, not only as a component of the larger plaza upgrade but also as space reserved for a future memorial. We are committed to maintaining a high level of coordination moving forward, involving key stakeholders and relevant City departments, both for the temporary condition and the final condition of the site.

**Proposed Work and Timeline:**

The work for the temporary relocation is projected to commence by the Fall of 2023, with grading and site preparation beginning as early as September. The intention is to use this site as the temporary location until Spring of 2028.

**Site Appearance During Temporary Condition:**

Visual representations of the site plan and renderings from multiple perspectives will be included in our attached presentation. It is important to note that we will regrade and prepare the grassy corner site with new landscaping and hardscaping as part of the temporary relocation.

**Site Maintenance During Temporary Condition:**

Buckley & Co, Inc., PennDOT's 95/CAP construction contractor, will be responsible for the maintenance of the temporary relocation site during the temporary condition, ensuring the Memorials and the site are well cared for.

**Memorials Return and Final Condition:**

The Irish and Scottish Memorials are slated to return to the new Penn's Landing Park in Spring 2028. Contractual and environmental obligations are in place to ensure the Memorials are placed in the new park. As for the final site condition after the Memorials are relocated to the new Park, PennDOT commits to installing several elements of the *Reimagining Foglietta Plaza* concept plan (Olin, February 2022) within the temporary relocation footprint, pending approvals from key stakeholders and applicable City departments. Ongoing conversations will inform this process.

**Project Boundaries and Environmental Compliance:**

PennDOT must adhere to the defined boundary for the temporary relocation as part of the federal environmental review and compliance process. Any impacts beyond this boundary would trigger extensive and costly environmental compliance documentation that falls outside the current project scope and budget.

A full submission packet for the project will be shared by September 6, 2023. Please direct any questions regarding the project or submission package to Charles H. Davies, [cdavies@pa.gov](mailto:cdavies@pa.gov), 610-205-6670, as well as the commission's decision. We are looking forward to this exciting project and presenting our contractor's proposed Memorial relocation plan to the Art Commission.

Sincerely,

*/s/ Charles H Davies*

Louis R. Belmonte, P.E.  
District Executive  
Engineering District 6-0

cc: C. Davies, E. Elbich, D. Abazi (PennDOT)  
E. Lankenau (City of Philadelphia)  
J. Forkin, L. Woods, K. Thompson, (DRWC)  
D. Ferraro, J. Pezzotti (Pennonni Associates, Inc)  
F. Bonito, M. Nelson (Hill Int'l, Inc)  
File



# SR 0095 Central Access Philadelphia (CAP) Project

## ECMS Project No. 106264

# Philadelphia Art Commission





# Agenda

- **Introductions and Opening Remarks**
- **Overview of Proposal**
- **I-95 CAP Project Context**
  - Existing Memorials
  - Future Memorials Site on Penn's Landing Park
- **Proposed Temporary Site of Irish & Scottish Memorials**
  - Site Location
  - Memorial Elements for Relocation
  - Temporary Memorial Site Plan
- **Draft Final Condition Concept for Corner of Foglietta Plaza**
- **Schedule/Next Steps/Discussion**

# Overview of Proposal

## Design Intent

- Minimize movement and to work with the preferences of the Irish and Scottish Memorial Boards

## Contractor Schedule

- PennDOT's contractor presented a temporary relocation option for the Memorials
- Saves approximately 9 months and reduces potential risk to the Memorials by moving them away from a heavy construction zone

## Temporary Site Location

- Identified by construction contractor as potential temporary relocation site.
- Nearby other memorials and community amenities on Foglietta Plaza



# Overview of Proposal

## Design Development

- Developing the temporary option took several months of coordination by PennDOT and the City, and with the Irish and Scottish Memorial Boards.

## Folgietta Plaza Plan

- PennDOT and the City were part of the SHCA-led planning process for *Reimagining Foglietta Plaza* (Olin, February 2022)
- PennDOT commits to coordination going forward for the final condition.

## City/Agency Coordination

- We are presenting the option to you, as key stakeholders, before bringing the temporary relocation option to the Art Commission on September 13.
- PennDOT and the City will need to return to the Art Commission to present a final condition plan.



# Summary of *Reimagining Foglietta Plaza* Design Process

## PROGRAMMING AND USE STUDY

**SEP 2021** STAKEHOLDER ENGAGEMENT: PROGRAMMING

**OCT 2021** PUBLIC MEETING #1: SITE TOUR AND DISCUSSION OF USE  
PUBLIC MEETING #2: PROGRAMMING AND USE DISCUSSION

**FEB 2022** FINAL REPORT: PROGRAMMING AND USE STUDY  
PUBLIC MEETING #3: PROGRAMMING AND USE STUDY

## CONCEPT DESIGN

**DEC/JAN 2022-2023** DESIGN AND STAKEHOLDER ENGAGEMENT

**MAR 2023** PUBLIC MEETING #4: CONCEPT DESIGN PRESENTATION

### Project Timeline

The 2022 Concept Design for *Reimagining Foglietta Plaza* is based on broad public and stakeholder support in the 2021 Programming and Use Study.

Source: Olin Partnership



# Summary of *Reimagining Foglietta Plaza* Design Process

Society Hill Civic Association  
Society Hill Towers  
Penns Landing Square  
LCOR / 1 Dock Street  
Vietnam Veterans Memorial  
Korean War Memorial  
Pennsylvania Iraq-Afghanistan Memorial  
Old City Business Improvement District  
South Street/Headhouse Square B.I.D.

PennDOT  
Rep. Mary Isaacson  
Councilmember Mark Squilla  
Philadelphia Parks & Recreation  
Phila Office of Arts, Culture & Creative Economy  
Office of Transportation, Infrastructure, &  
Sustainability  
DRWC  
ILMC

**Project Stakeholders**  
A large and diverse group gave feedback and input into the design process.

Source: Olin Partnership

# Summary of *Reimagining Foglietta Plaza* Design Process

## What Stays

- Trees
- Existing Memorials

## What Needs Repairs

- Pavement and Walls
- Health, Safety, and Accessibility

## What's New

- Lawn
- Gardens
- Seating (Fixed, Moveable, and Integrated)
- Lighting
- Signage and Wayfinding
- Sound Wall/Buffer
- Accessibility Improvements
- Events and Activities

## What was Contested

- Dog Park
- Café/Food Trucks
- Community Garden
- Additional Memorial
- Public Art

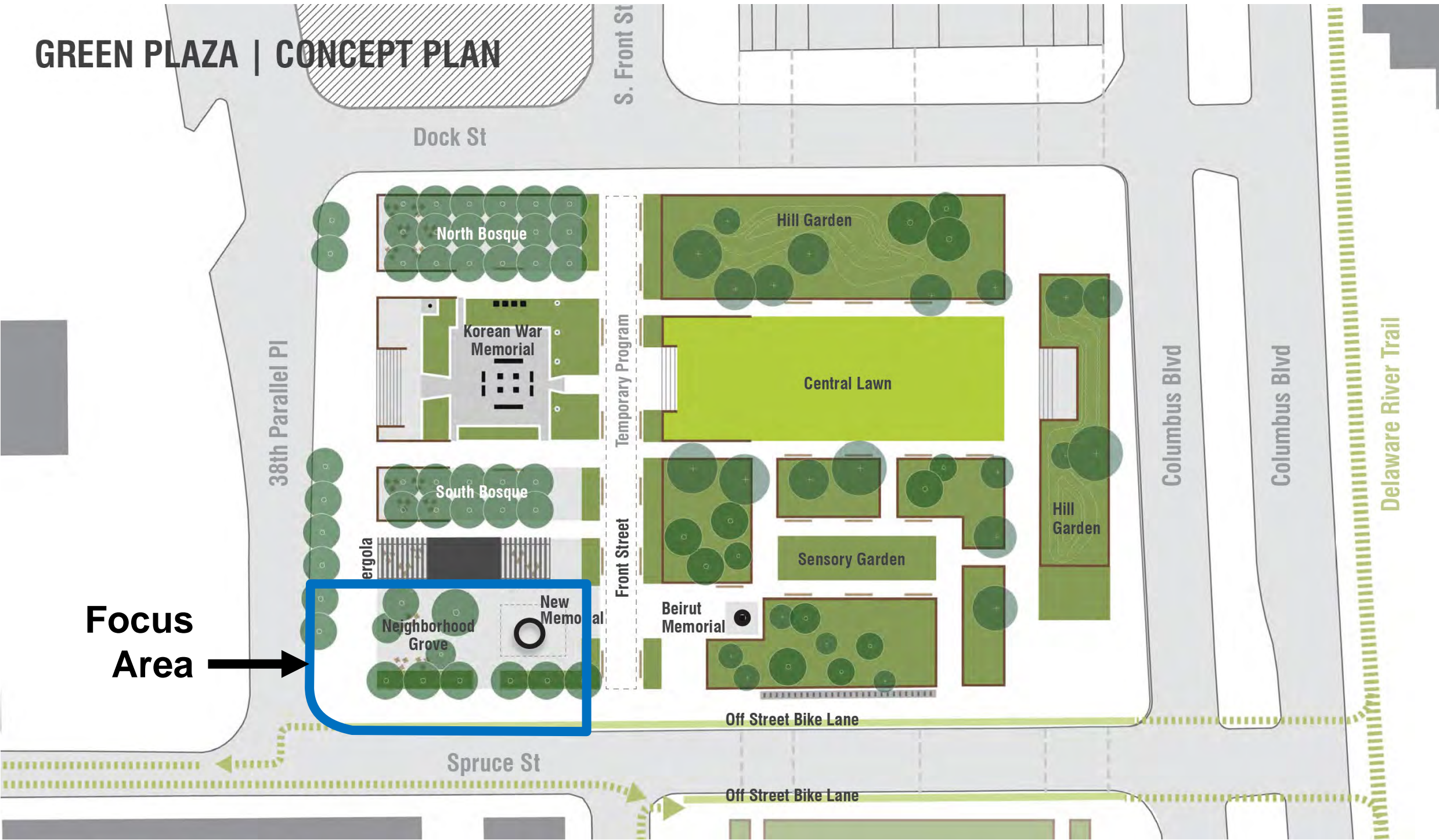
## RECOMMENDATIONS FOR CONTESTED PROGRAM

- **DOG PARK: OUT**
- **CAFE: OUT / FOOD TRUCKS: MAYBE**
- **COMMUNITY GARDEN: OUT**
- **ADDITIONAL MEMORIAL: POTENTIALLY IN, SUBJECT TO ONGOING ENGAGEMENT AND INTEGRATION INTO DESIGN**
- **PUBLIC ART: POTENTIALLY IN, SUBJECT TO ONGOING ENGAGEMENT AND INTEGRATION INTO DESIGN**

Source: Olin Partnership



# Summary of *Reimagining Foglietta Plaza* Design Process



**Preferred Alternative**  
2022 Concept Design for Foglietta Plaza was based on broad public and stakeholder support in the 2022 Programming and Use Study.



# I-95 CAP Project Context – Existing Memorials





# I-95 CAP Project Context – Irish Memorial

## History of the Site

- This Memorial, a national monument, was opened to the public on October 25, 2003. The Memorial stands prominently at the southeast corner of Front and Chestnut Streets in Philadelphia.

## The Monument

- The centerpiece of this project is a monumental bronze sculpture set in a 1.75 acre dedicated park. Glenna Goodacre, the artist who sculpted the Vietnam Women's Memorial in Washington, D.C., created the monument, including 35 life-sized figures. The bronze work measures a spectacular 30 feet long by 12 feet wide and 12 feet high



Source: <https://www.delawariverwaterfront.com/places/irish-scottish-memorial>

# I-95 CAP Project Context – Scottish Memorial

## History of the Site

- The monument was dedicated on October 8, 2011

## The Monument

- The monument depicts an oft-observed scene of Scottish immigration. it represents a Highlander family arriving in Philadelphia in the mid-18th century full of hope for a new life in the New World, it also commemorates all of the Scots and Scots-Irish who have come to America in the past, now, and in the future.

## Tun Tavern

- Nearby the monument, a stone with a commemorative plaque marks the site where the tavern once stood. This was not only the site of the founding of the St. Andrew's Society but it is also considered the birthplace of the United States Marine Corps, which held its first recruitment drive here in 1775, during the American Revolution



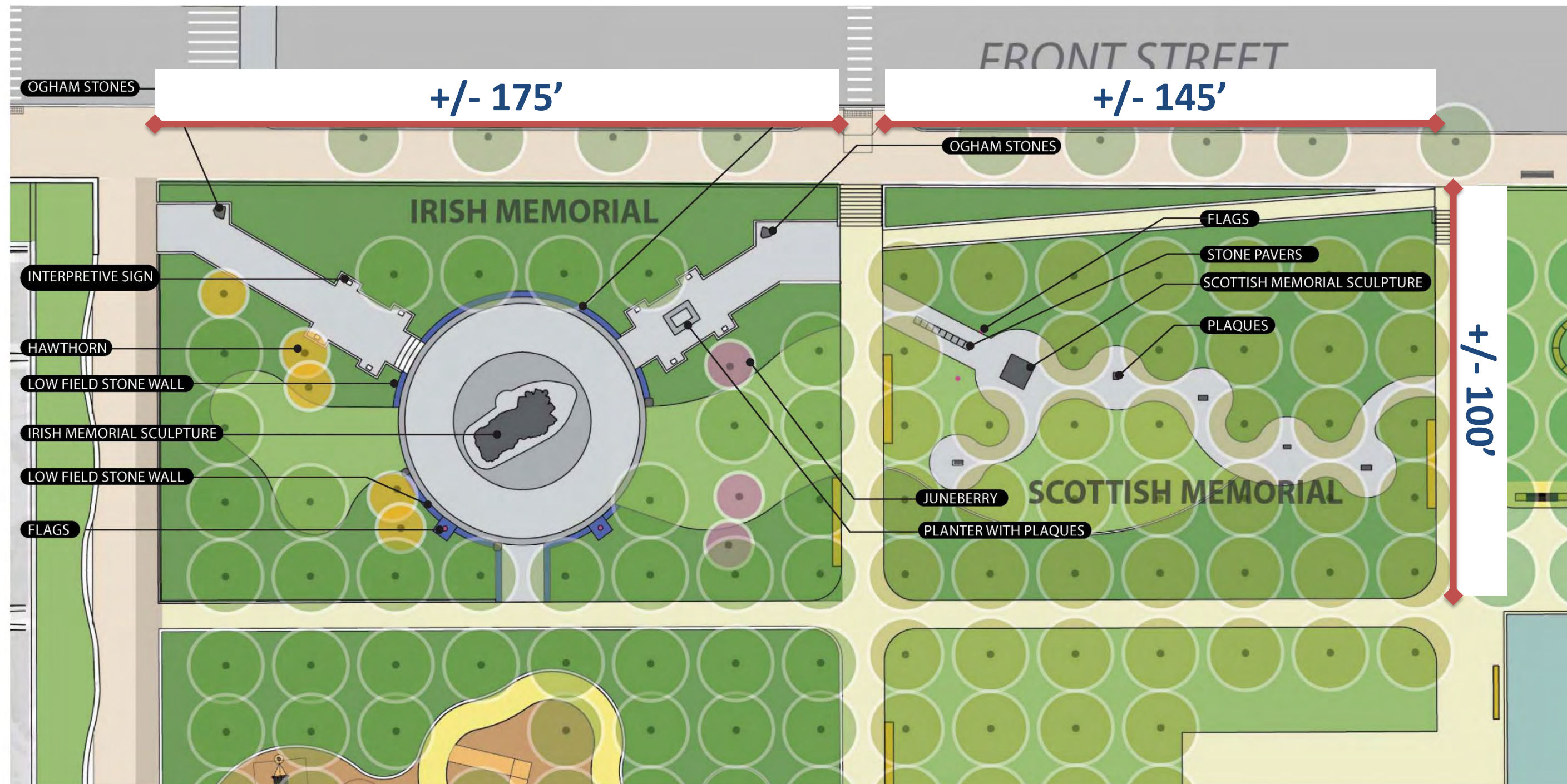


# I-95 CAP Project Context – Penn's Landing Park





# I-95 CAP Project Context – Penn's Landing Park



Irish and Scottish Memorial Layout





# I-95 CAP Temporary Memorial Site Proposal



## What are we asking?

PennDOT would like to *temporarily* relocate the Irish and Scottish Memorials during the I-95 CAP Construction

## When will this happen?

Fall 2023 – Spring 2028

## Why are we proposing this?

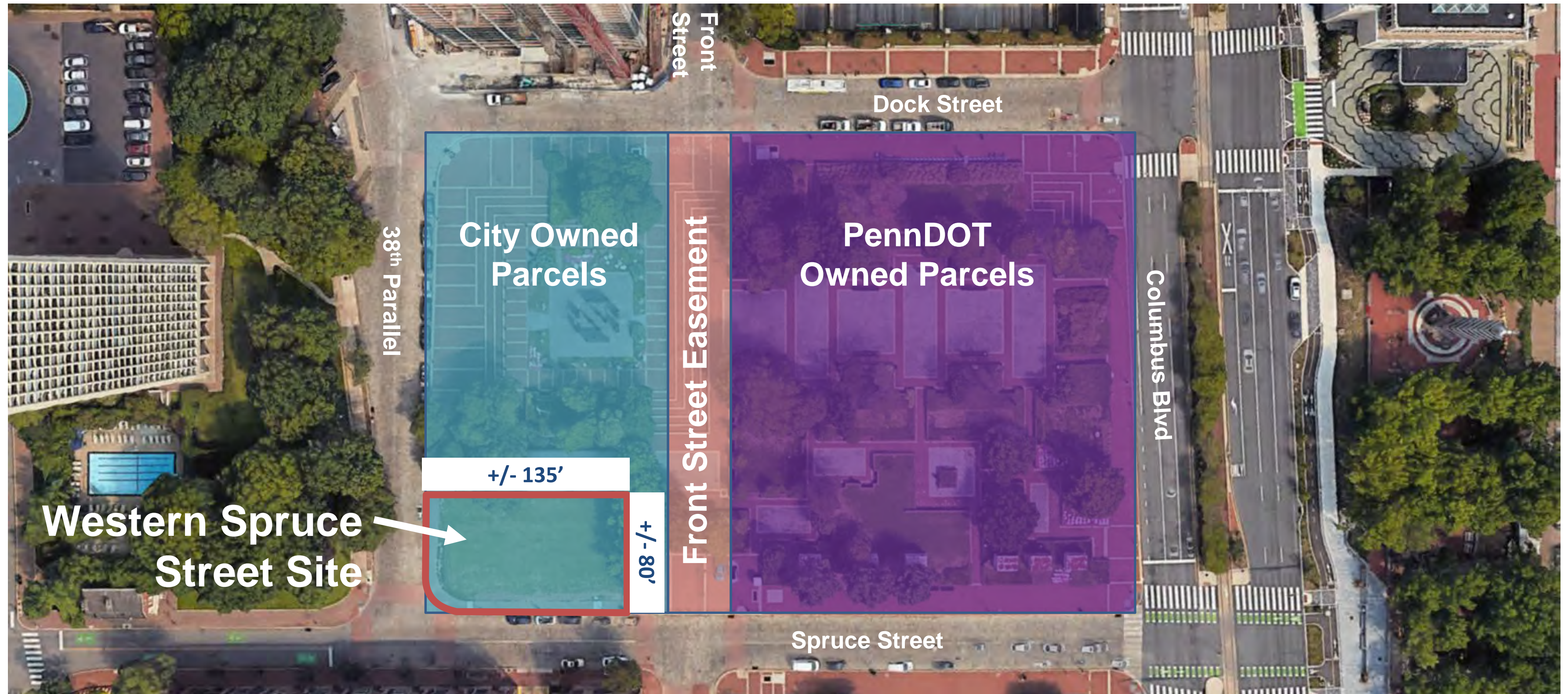
Will reduce the construction schedule for the I-95 CAP Project by 9 months

## What will this cost?

\$300,000 (estimated)



# I-95 CAP Temporary Memorial Site Proposal





# I-95 CAP Temporary Memorial Site Proposal



Looking East from 38<sup>th</sup> Parallel



Looking West from Foglietta Plaza



# I-95 CAP Temporary Memorial Site Plan

## Proposed Site Plan



### What is shown:

Key elements of exiting Irish and Scottish Memorial will be relocated to this site with new paved access and landscaping as shown

### When:

Fall 2023 – Spring 2028

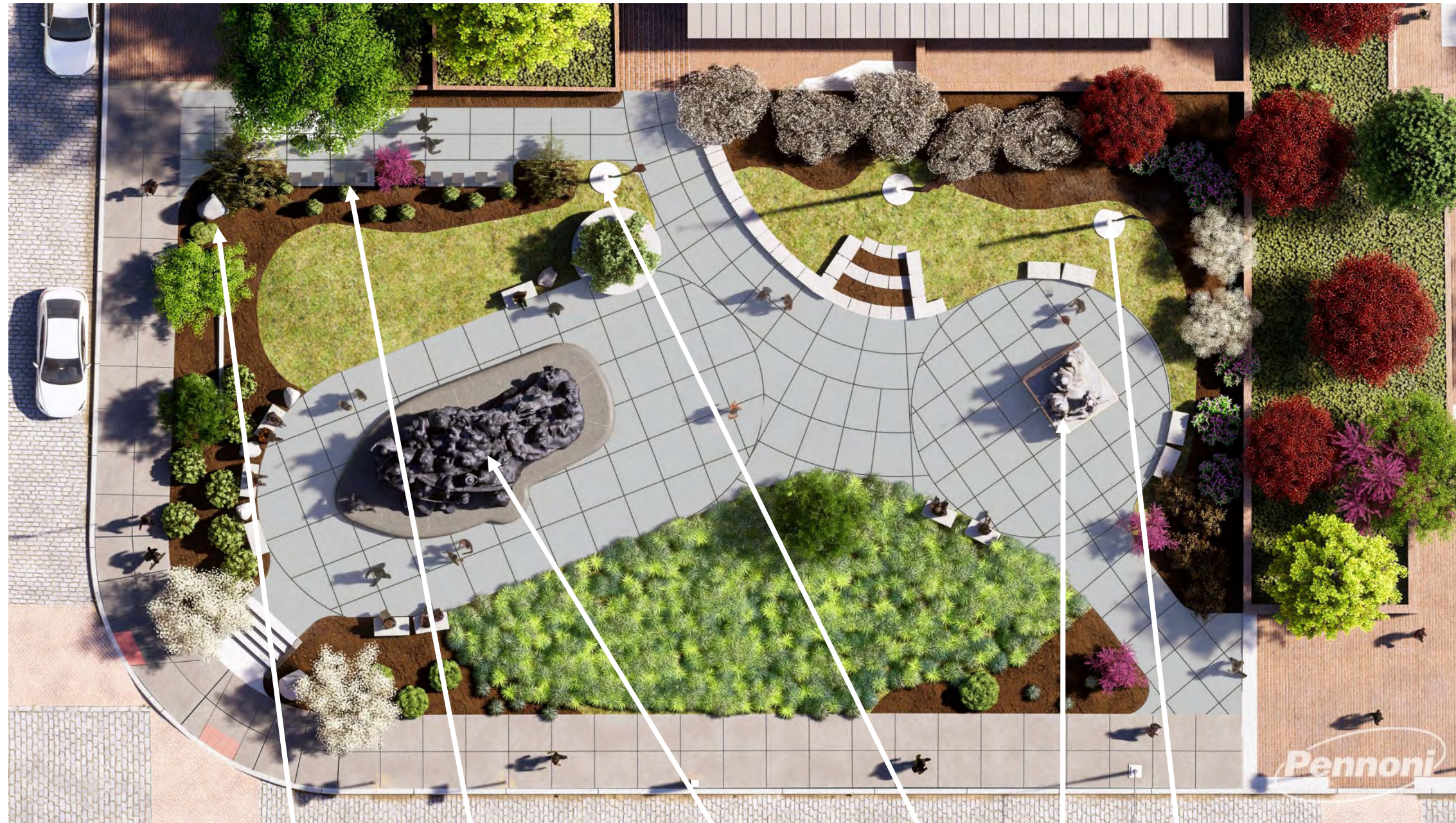
### Who will maintain:

Buckley & Co. Inc. (PennDOT I-95 CAP project contractor)



# I-95 CAP Temporary Memorial Site Plan - Memorial Elements

## Proposed Site Plan



**Identified Conservator:**  
Heritage Conservation Collective

**Identified Rigger:**  
Harry H. Gordon Studios, LLC

I-95 CAP

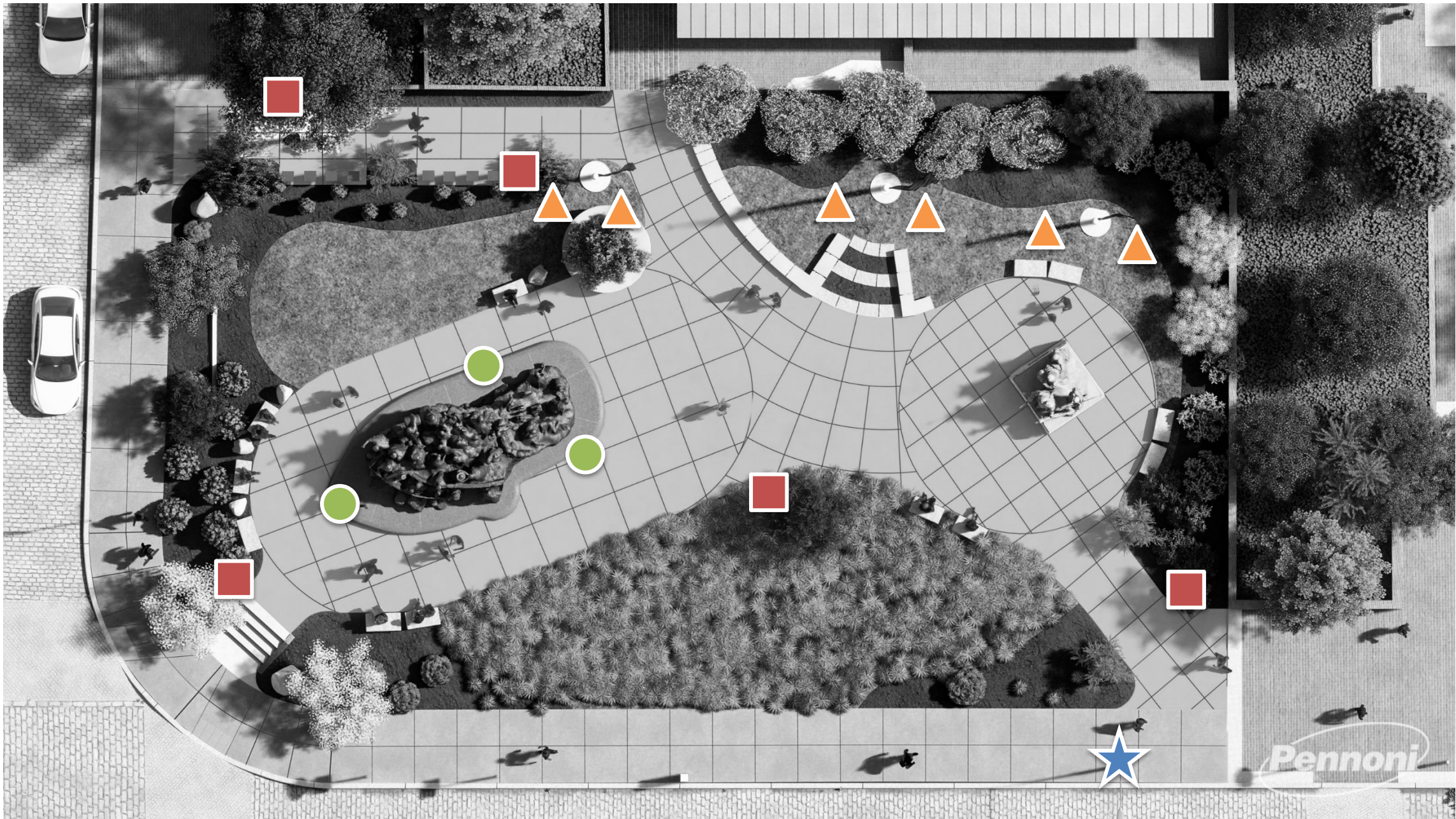


**Memorial Elements**



# I-95 CAP Temporary Memorial Site Plan - Lighting

## Proposed Site Plan



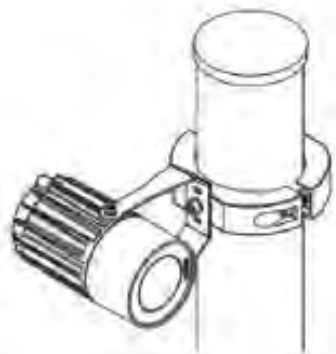
**Bollard Light**



**In-Ground  
Uplight with  
Angle  
Adjustability**



**Stake Mount  
Flag Pole  
Accent Light**

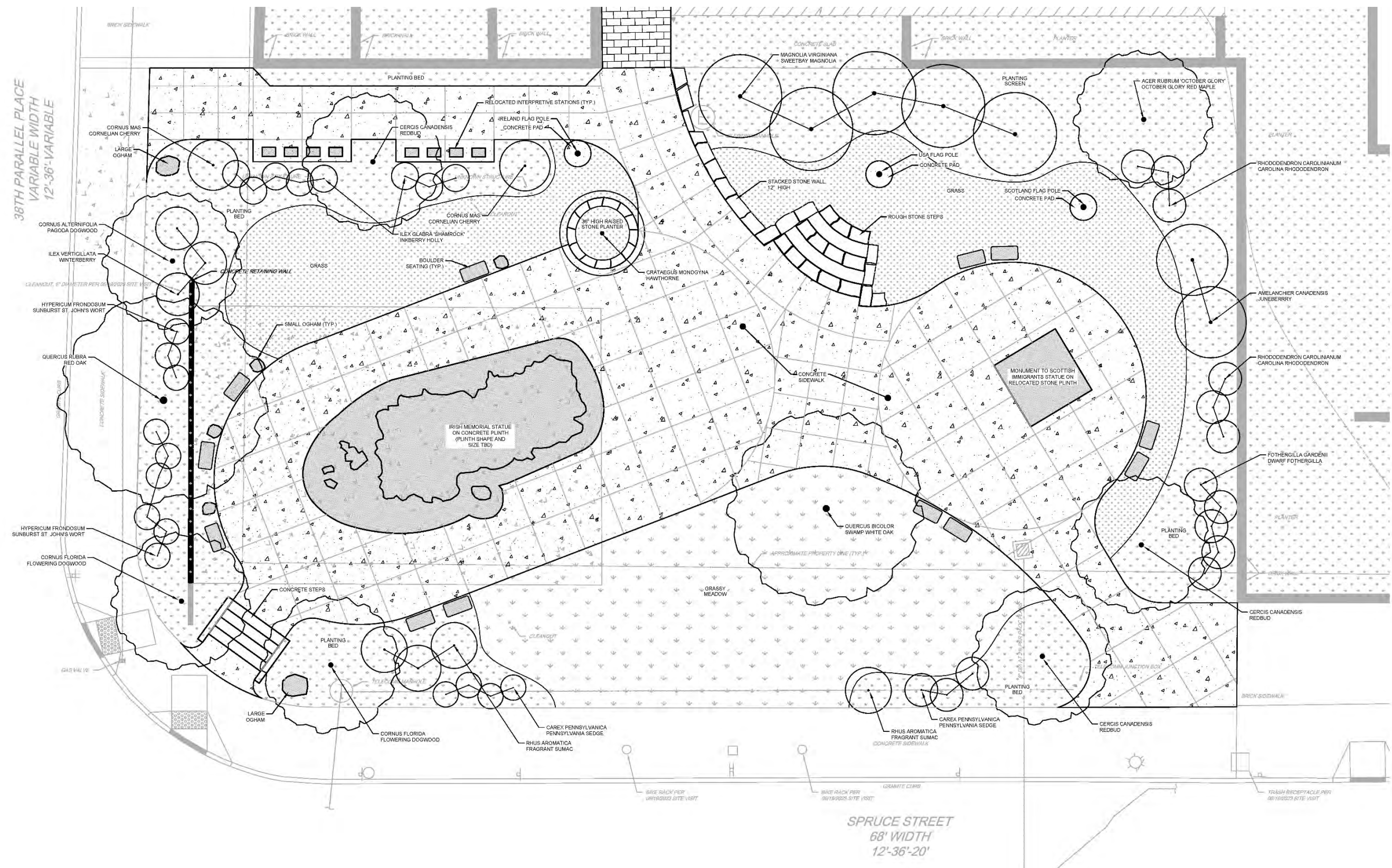


**Statue Accent  
Light Mounted  
on Existing  
Poles**



# I-95 CAP Temporary Memorial Site Plan - Plantings

## Proposed Planting Plan



Planting Plan emphasizes plants and trees that are impactful to the existing Irish and Scottish Memorials

Plant size and maturity selected to maximize their impact over the next 4-5 years.



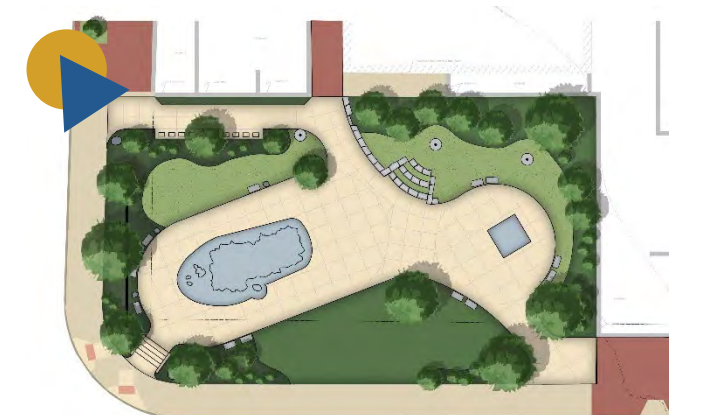
# I-95 CAP Temporary Memorial Site – View from 38<sup>th</sup> Parallel



I-95 CAP



Existing Site Conditions





# I-95 CAP Temporary Memorial Site – View from Korean War Memorial



I-95 CAP



Existing Site Conditions





# I-95 CAP Temporary Memorial Site – View from Korean War Memorial



I-95 CAP

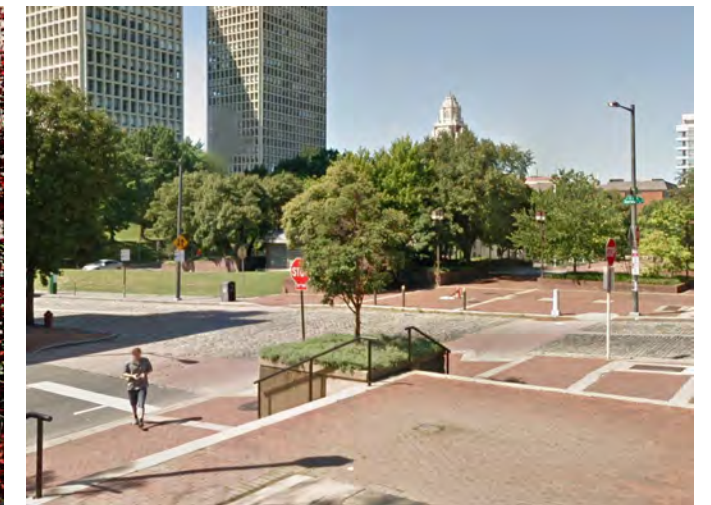


Existing Site Conditions





# I-95 CAP Temporary Memorial Site – View from Spruce/Front

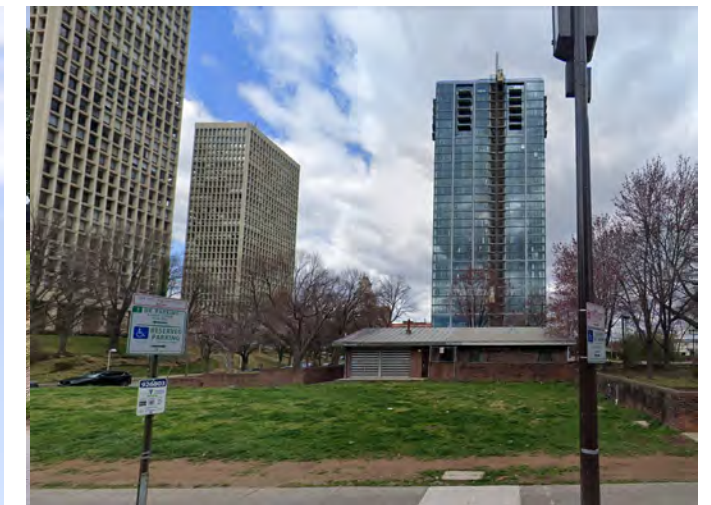


Existing Site Conditions





# I-95 CAP Temporary Memorial Site – View from Spruce Street



Existing Site Conditions





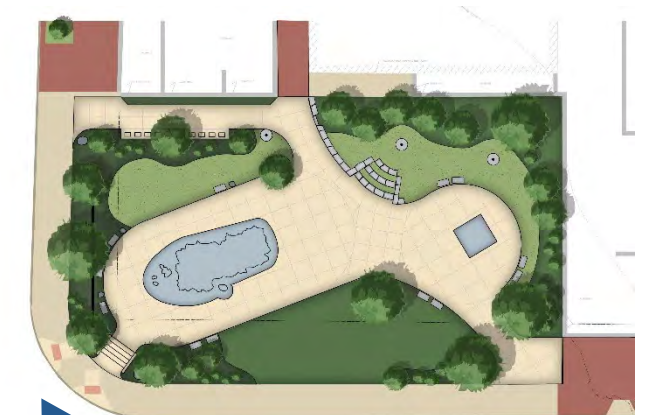
# I-95 CAP Temporary Memorial Site – View from Spruce/38<sup>th</sup> Parallel



I-95 CAP



Existing Site Conditions

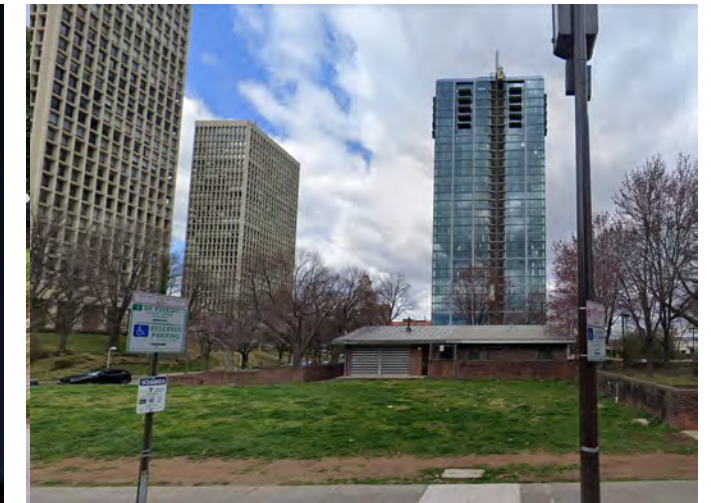




# I-95 CAP Temporary Memorial Site – Night View from Spruce/38<sup>th</sup> Parallel



I-95 CAP

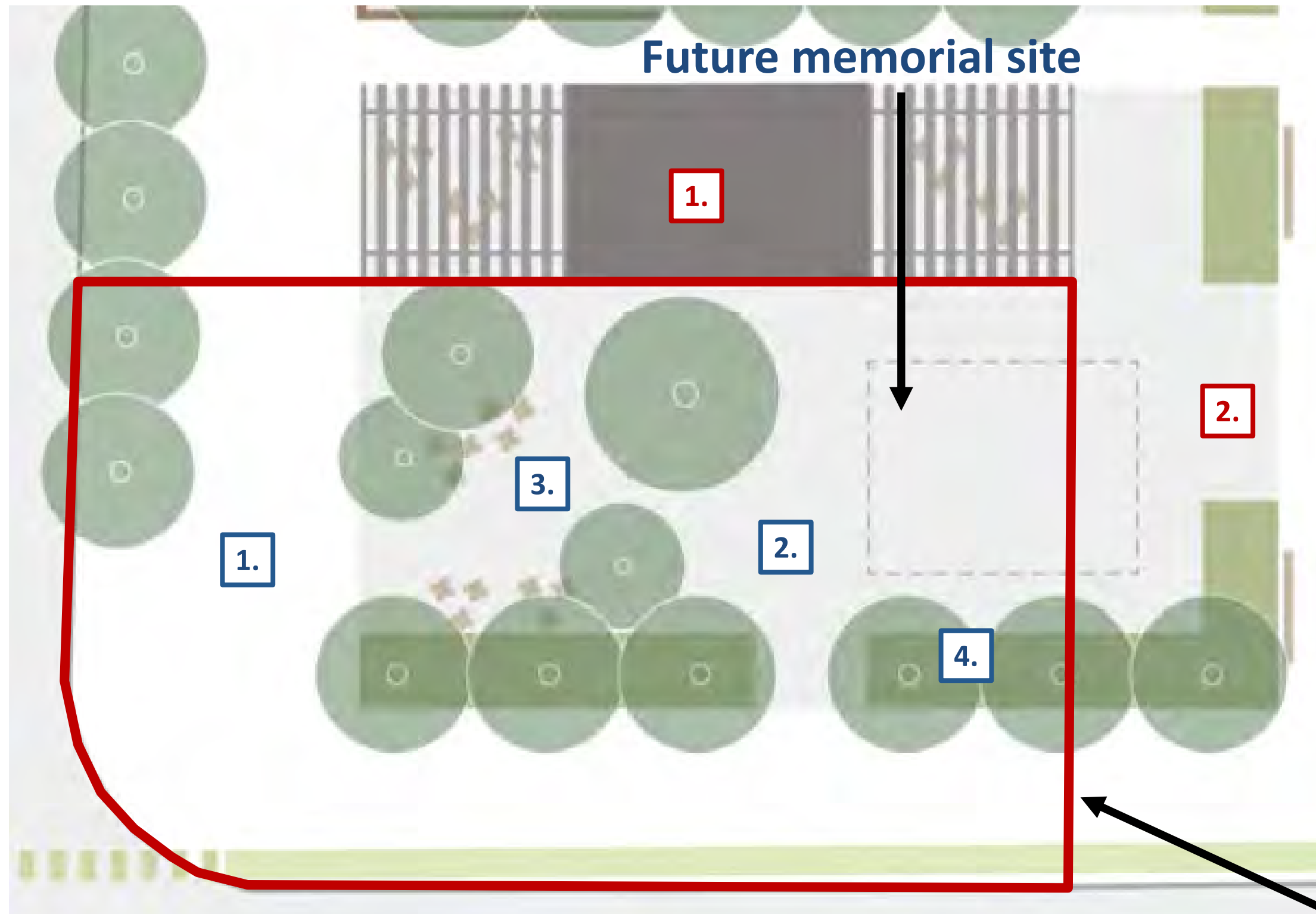


Existing Site Conditions





# I-95 CAP - DRAFT Final Condition Concept for Corner of Foglietta Plaza



As a City site, PennDOT will work with key stakeholders and the City towards implementing the Concept Plan elements inside the limits of work shown. This includes:

1. New brick widened sidewalks
2. Remove slab and regrade the site
3. Install ADA accessible crushed granite stone
4. Add large shade trees

**Elements of the Concept Plan that cannot be addressed thru this effort include:**

1. Modifications to existing building
2. Modifications to existing planters

**Limits of Work for Restoration Plan**

# I-95 CAP Construction Schedule

- **Demolition of Existing CAP Structure (including temporary relocation of memorials)**
  - Fall 2023 – Summer 2024
- **South Street Bridge Extension**
  - Fall 2023 – Summer 2025
- **Construction of new CAP Structure over I-95 and Columbus Blvd**
  - Fall 2024 – Early 2028
- **Place Irish and Scottish Memorials in their Permanent Location on Penn's Landing Park**
  - Spring 2028
- **Construction of Penn's Landing Park Landscaping and Amenities**
  - Spring 2028 – Completion

# Discussion / Next Steps

- **Recent Engagement**

- **Spring 2023 - Memorials**
- **Summer 2023 - City Agencies**
- **August 8 – Key Stakeholders Meeting**
- **September 7 – Society Hill Civic Association Community Meeting**

- **Next Steps for Engagement**

- **September 13 – Philadelphia Art Commission**
- **Late 2023 – Early 2024 – Stakeholder and community meetings to coordinate draft restoration plan**

# Questions?

- **Project Websites**

- PennDOT – <http://95revive.com/project-areas/sector-b/>

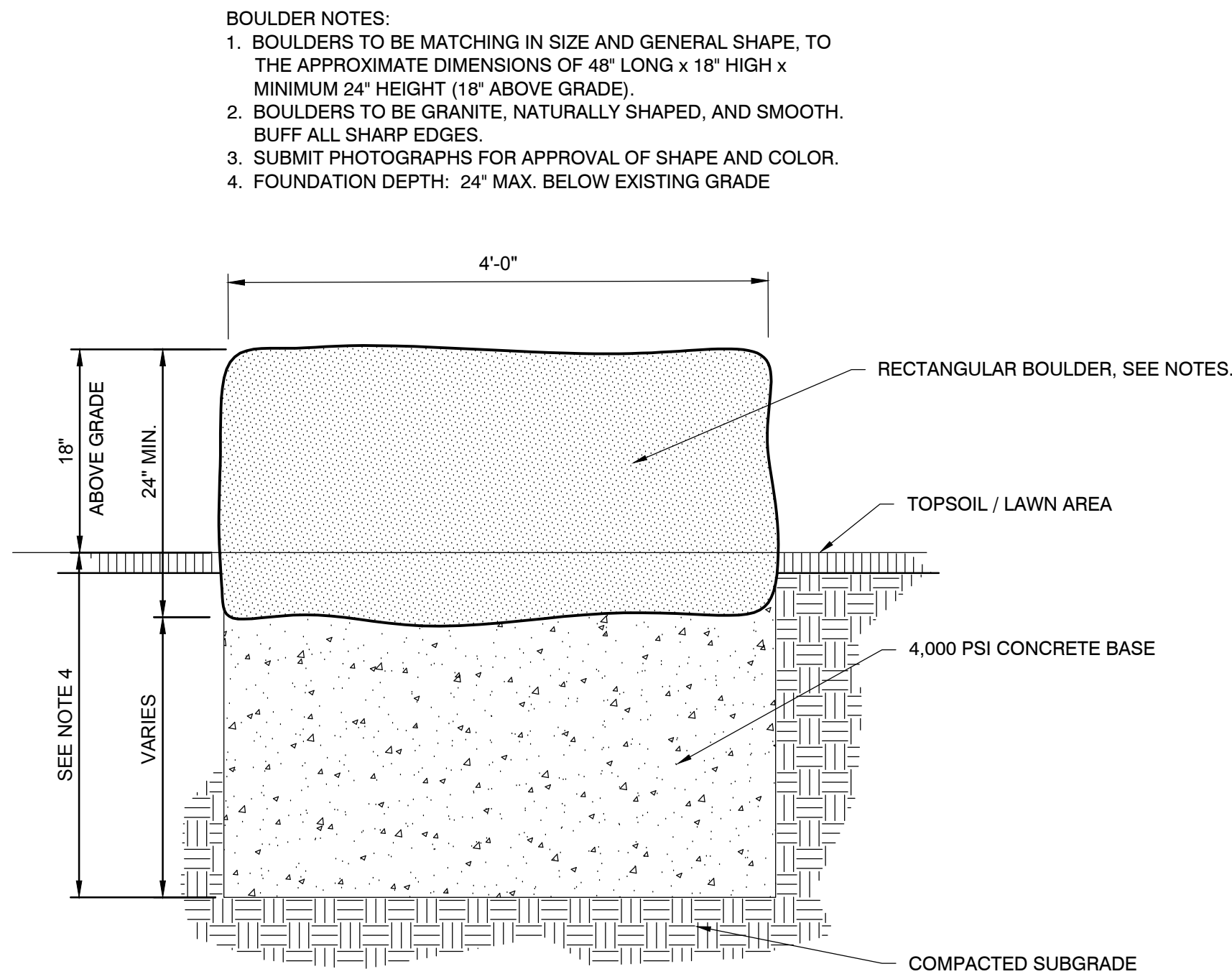
- **Project Contact Info**

*Email*

[info@95revive.com](mailto:info@95revive.com)

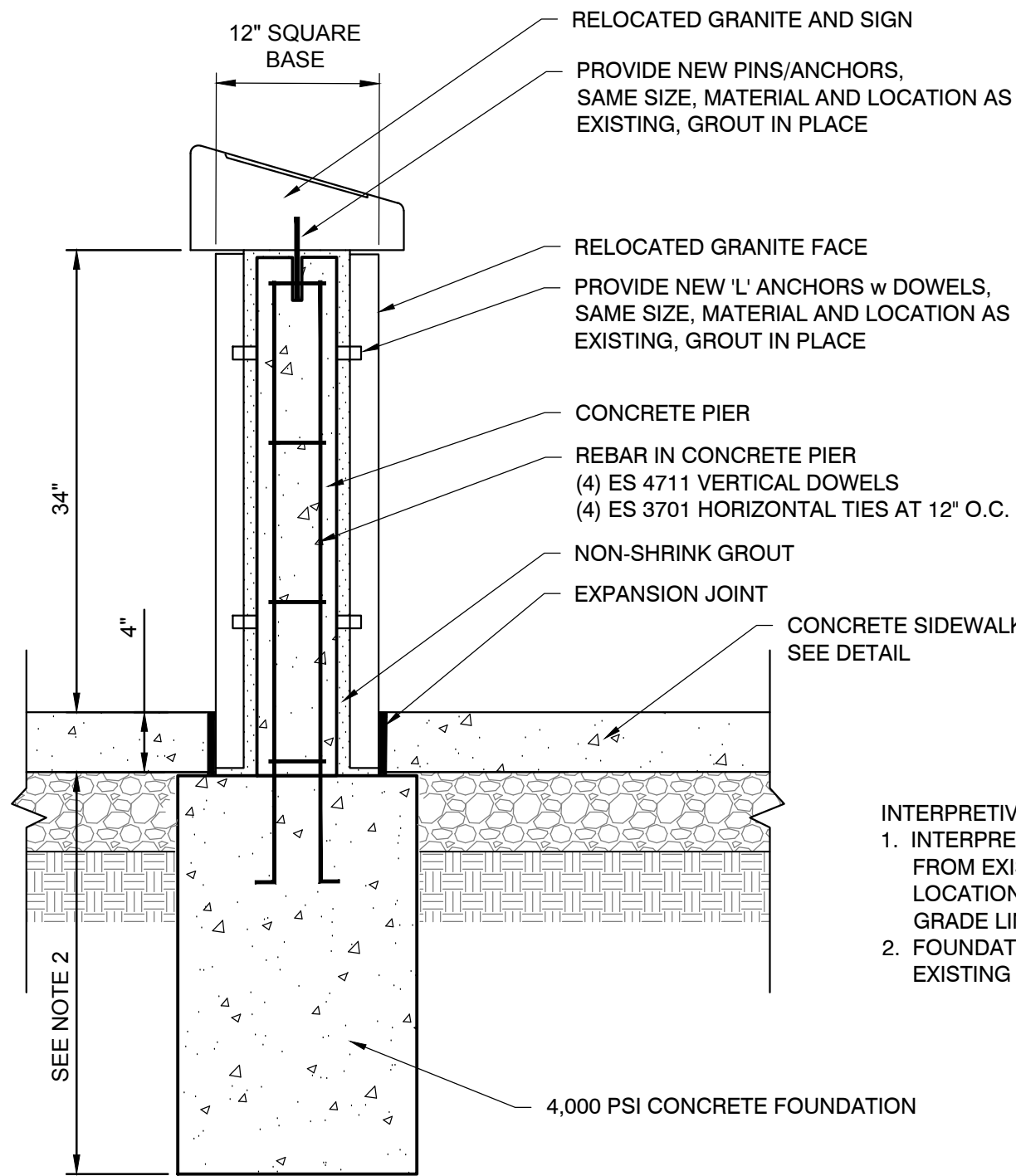
*Construction Hotline*

1-215-513-1399



DETAIL- BOULDER SEATING

N.T.S.

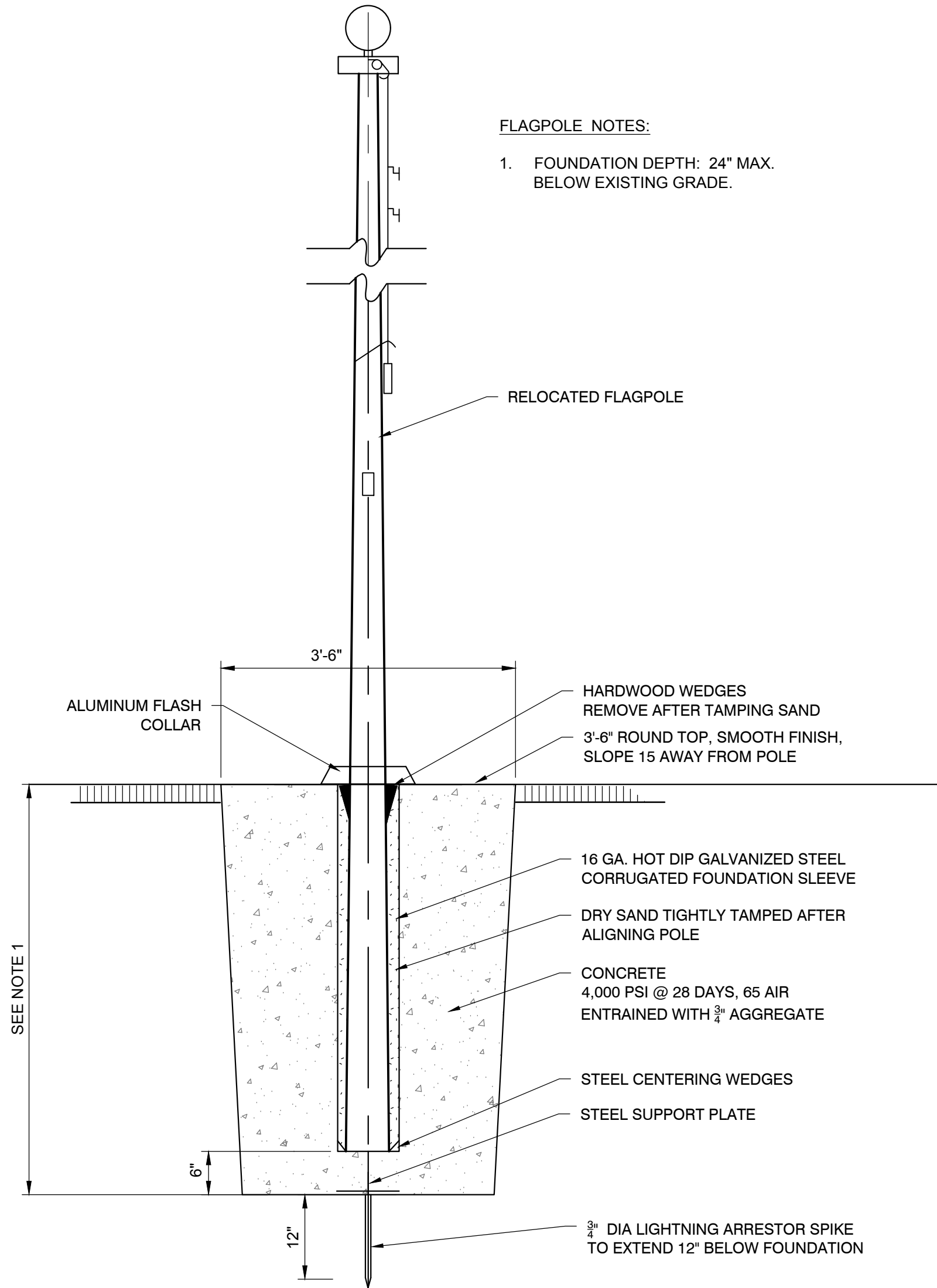


**INTERPRETIVE STATION NOTES:**

- INTERPRETIVE STATIONS TO BE RELOCATED FROM EXISTING MEMORIAL SITE. MARK LOCATION OF ALL PANELS AND EXISTING GRADE LINE PRIOR TO REMOVAL
- FOUNDATION DEPTH: 24" MAX. BELOW EXISTING GRADE.

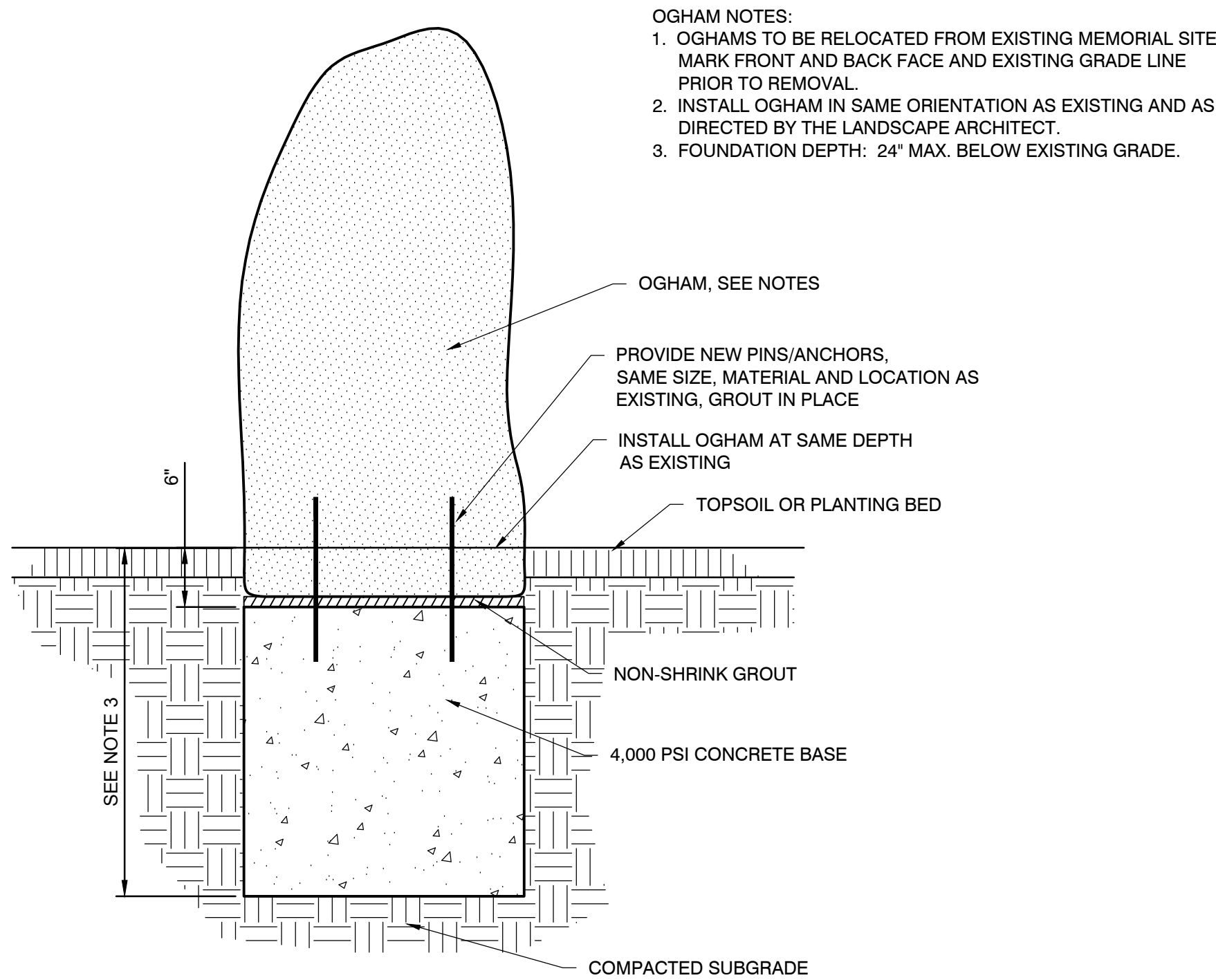
DETAIL- INTERPRETIVE STATIONS (RELOCATED) ON CONCRETE FOUNDATION

N.T.S.



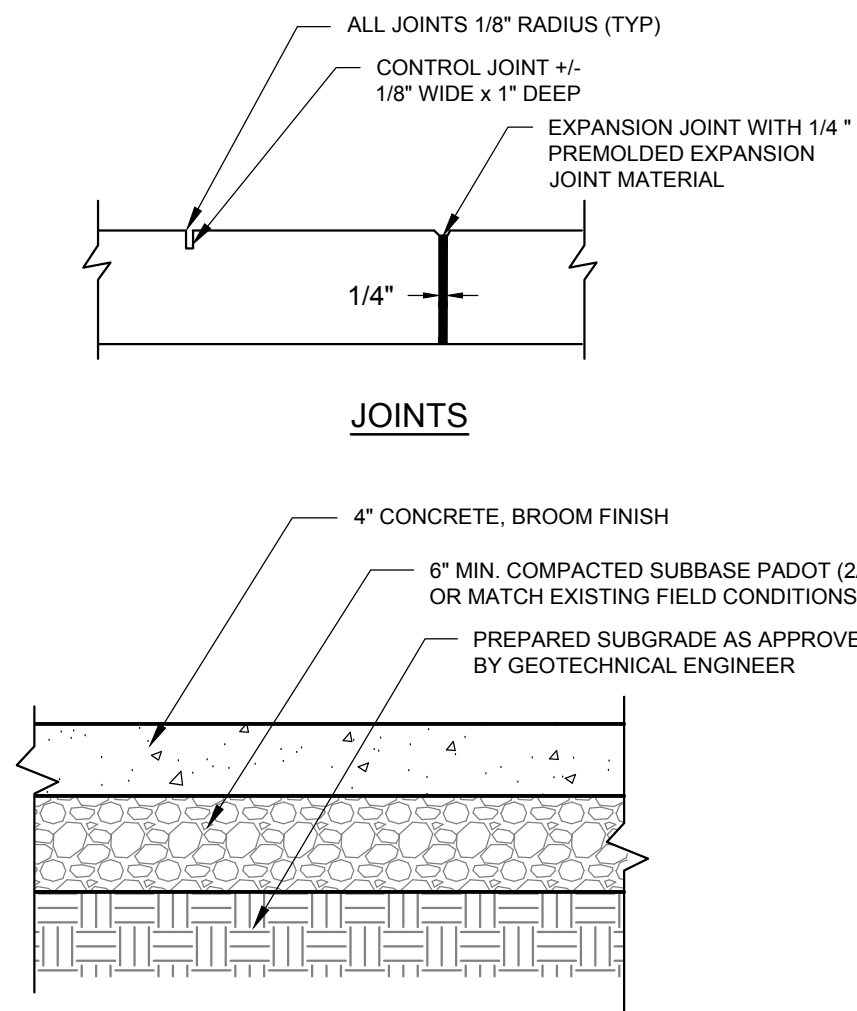
DETAIL- FLAGPOLE

N.T.S.



DETAIL- STONE OGHAM (RELOCATED) ON CONCRETE FOUNDATION

N.T.S.



**NOTES:**

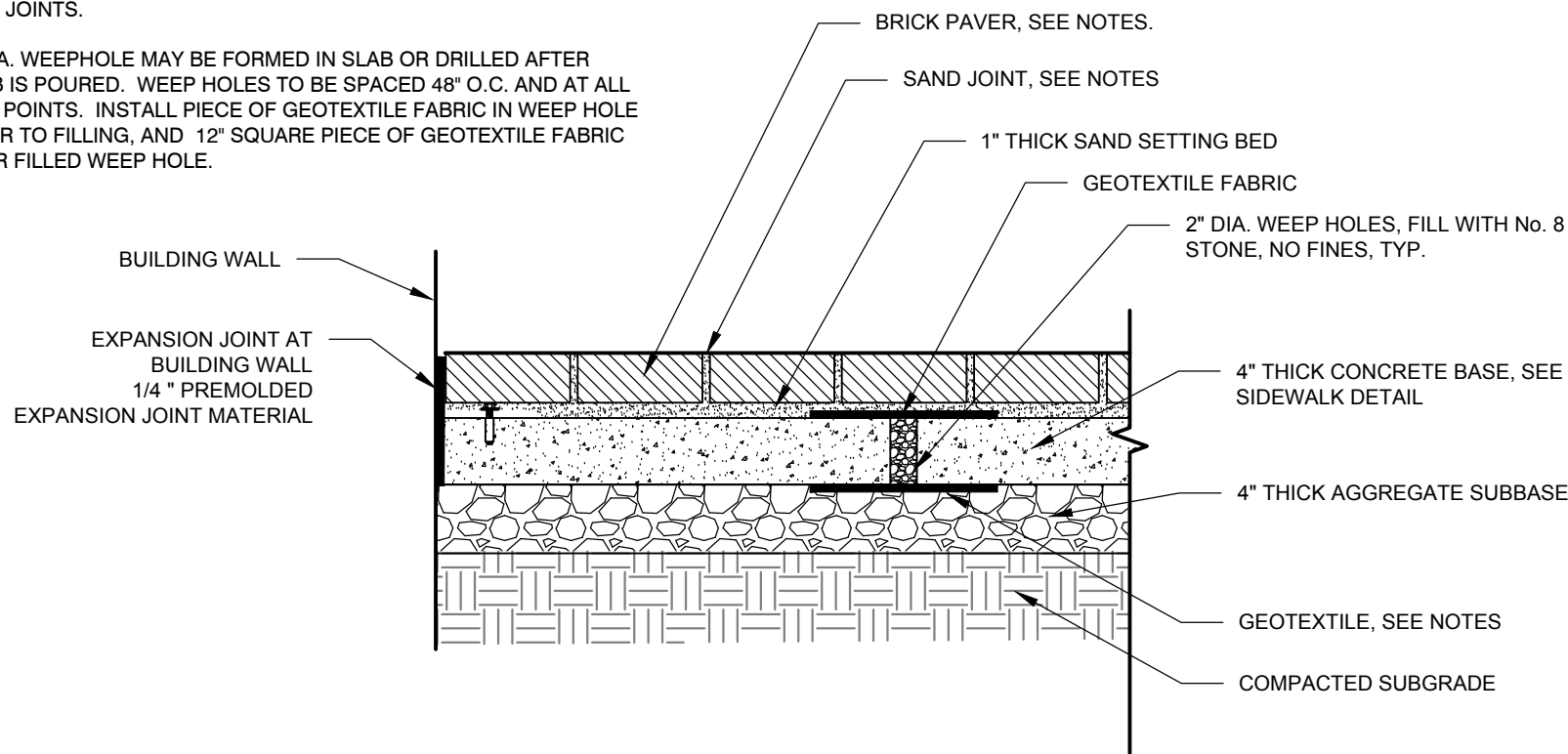
- ALL CONCRETE SHALL BE 4,000 PSI AT 28 DAYS, AIR ENTRAINED, W/C RATIO 0.45, MAX. SLUMP 5
- PLACE EXPANSION JOINTS WHEREVER SIDEWALK MEETS RAMPS, STRUCTURES, OR ADJACENT CURB.
- MAXIMUM EXPANSION JOINT SPACING 20' OC
- SLOPES SHALL BE IN ACCORDANCE WITH THE GRADING PLAN AND NOTES.
- SIDEWALK TO BE CONSTRUCTED IN ACCORDANCE WITH MUNICIPAL AND PENNDOT SPECIFICATIONS.

DETAIL- CONCRETE SIDEWALK

N.T.S.

**BRICK PAVER NOTES:**

- BRICK PAVERS TO MATCH EXISTING BRICK PAVERS. EXISTING PAVERS MAY BE CLEANED AND REUSED IF APPROVED BY THE ENGINEER.
- PAVERS TO HAVE HAND TIGHT JOINTS. SWEEP ISOMERIC SAND INTO JOINTS.
- 2" DIA. WEEP HOLE MAY BE FORMED IN SLAB OR DRILLED AFTER SLAB IS POURED. WEEP HOLES TO BE SPACED 48" O.C. AND AT ALL LOW POINTS. INSTALL PIECE OF GEOTEXTILE FABRIC IN WEEP HOLE PRIOR TO FILLING, AND 12" SQUARE PIECE OF GEOTEXTILE FABRIC OVER FILLED WEEP HOLE.

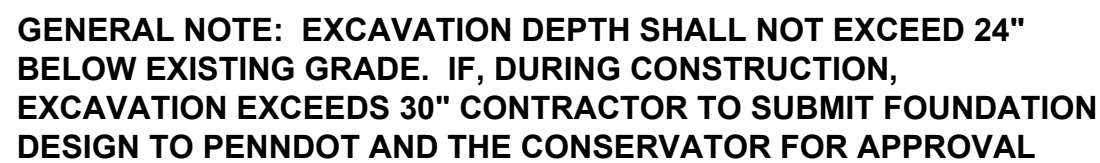


DETAIL- BRICK PAVER ON CONCRETE BASE

N.T.S.

**GENERAL NOTE:** EXCAVATION DEPTH SHALL NOT EXCEED 24" BELOW EXISTING GRADE. IF, DURING CONSTRUCTION, EXCAVATION EXCEEDS 30" CONTRACTOR TO SUBMIT FOUNDATION DESIGN TO PENNDOT AND THE CONSERVATOR FOR APPROVAL







Irish and Scottish Memorials. Proposed Temporary Site - Planting Design

Plant List

Pauline Hurley-Kurtz, RLA

Existing Trees and Shrubs adjacent to Temporary Site

|            | Key  | Botanical Name           | Common Name        | Quantity | Current Size      | Notes  |
|------------|------|--------------------------|--------------------|----------|-------------------|--|
| Canopy     | AcxF | <i>Acer x freemanii</i>  | Freeman's Maple    | 5        | 12" cal           | Located in raised planter to east of site          |
|            | AG   | <i>Acer griseum</i>      | Paperbark Maple    | 1        | 6" cal            | Located in raised planter to east of site          |
|            | TA   | <i>Tilia americana</i>   | Basswood           | 1        | 24" cal           | Located in raised planter to east of site          |
|            | TC   | <i>Tilia cordata</i>     | Little Leaf Linden | 4        | 20", 14", 12" cal | Located in both raised planters. One hollow trunk  |
| Understory | CC   | <i>Cercis canadensis</i> | Redbud             | 3        | 12", 3", 6" cal   | Located in both raised planters. One lost branches |
|            | CM   | <i>Crataegus sp.</i>     | Hawthorn           | 1        | 4-6" cal          | Street tree on 38th Parallel Place                 |

Woodland Edge Plant Community (Areas A and B)

|                   | Key     | Botanical Name                        | Common Name               | Quantity | Size                | Notes  |
|-------------------|---------|---------------------------------------|---------------------------|----------|---------------------|--|
| Canopy            | Ar 'OG' | <i>Acer rubrum 'October Glory'</i>    | 'October Glory' Red Maple | 1        | 2-3" cal            | Brings adjacent maple canopy to memorial space. Fall color                                       |
|                   | MV      | <i>Magnolia virginiana</i>            | Sweetbay Magnolia         | 5        | 6-8' (2) / 4-6' (3) | Multistem. Mix sizes for grove pattern. White scented flowers Spring                             |
|                   | QR      | <i>Quercus rubra</i>                  | Red Oak                   | 1        | 2-3" cal            | Oak for biodiversity, structure. Transplants well  |
|                   | AC      | <i>Amelanchier canadensis</i>         | Juneberry                 | 3        | 6-8'                | Multistem. Possibly transplant from Irish Memorial. White flowers in Spring, red berries in June |
| Understory        | CA      | <i>Cornus alternifolia</i>            | Pagoda Dogwood            | 1        | 6-8'                | Spreading horizontal habit. Spring flowers and black berries                                     |
|                   | CC      | <i>Cercis canadensis</i>              | Redbud                    | 2        | 2" cal              | variety - <i>Cercis canadensis f. alba</i> is available  |
|                   | CF      | <i>Cornus florida</i>                 | Flowering Dogwood         | 1        | 2" cal              | Spring white flowers. Fall color.  |
|                   | CM      | <i>Crataegus monogyna</i>             | Hawthorn                  | 1        | 4-5'                | Multistem. White - pink flowers, red berries. Represents 'Scotch' in Irish landscape             |
| Shrubs            | CMA     | <i>Cornus mas</i>                     | Cornelian Cherry          | 2        | 5-6'                | Multistem. Possibly transplant from Irish Memorial. Flowers in March                             |
|                   | FG      | <i>Fothergilla gardenii</i>           | Dwarf Fothergilla         | 5        | 3-4'                | April-May flowers. Nice Fall color   |
|                   | HF      | <i>Hypericum frondosum 'Sunburst'</i> | Sunburst St. John's Wort  | 9        | 2-3'                | Yellow flowers, June and July  |
|                   | IG 'S'  | <i>Ilex glabra 'Shamrock'</i>         | American Holly            | 8        | 2-3'                | Evergreen. Flowers in April  |
|                   | IV      | <i>Ilex verticillata</i>              | Inkberry Holly            | 3        | 6-7'                | Red berries winter   |
| Herbaceous Plants | RC      | <i>Rhododendron carolinianum</i>      | Carolina Rhododendron     | 6        | 3-4'                | Evergreen. Pink -rose flowers in April   |
|                   | AF      | <i>Athyrium filix-femina</i>          | Lady Fern                 | TBD      | TBD                 | Add herbaceous plants in drifts  |
|                   | CP      | <i>Carex pennsylvanica</i>            | Pennsylvania Sedge        |          |                     |  |
|                   | CPI     | <i>Carex plantaginea</i>              | Broad leaf Sedge          |          |                     |  |
|                   | Mvi     | <i>Mertensia virginica</i>            | Virginia Bluebells        |          |                     |  |
|                   | PA      | <i>Packera aurea</i>                  | Golden Ragwort            |          |                     |  |
|                   | PAc     | <i>Polystichum acrostichoides</i>     | Christmas Fern            |          |                     |  |
|                   | SD      | <i>Stylophorum diphyllum</i>          | Woodland Poppy            |          |                     |  |
|                   | VS      | <i>Viola striata</i>                  | Cream Violet              |          |                     |  |
|                   | ZA      | <i>Zizia aurea</i>                    | Golden Alexanders         |          |                     |  |
|                   |         |                                       |                           |          |                     |  |
|                   |         |                                       |                           |          |                     |  |

Old Field Plant Community (Area C)

|                   | Key | Botanical Name                | Common Name        | Quantity | Size   | Notes  |
|-------------------|-----|-------------------------------|--------------------|----------|--------|--|
| Understory        | CC  | <i>Cercis canadensis</i>      | Redbud             | 1        | 2" cal | Spring pink flowers. White flowering variety - <i>Cercis canadensis f. alba</i> is available |
|                   | CF  | <i>Cornus florida</i>         | Flowering Dogwood  | 1        | 2" cal | Spring white flowers. Fall color.  |
| Shrubs            | CP  | <i>Comptonia peregrina</i>    | Sweet Fern         | 7        | 2-3'   | Yellow - green flowers April - May. Fragrant foliage.  |
|                   | RA  | <i>Rhus aromatica</i>         | Fragrant Sumac     | 4        | 3-4'   | Yellow blooms in April. Fragrant leaves  |
| Herbaceous Plants | BC  | <i>Bouteloua curtipendula</i> | Sideoats gramma    | TBD      |        |  |
|                   | ES  | <i>Eragrostis spectabilis</i> | Purple Love Grass  |          |        |  |
|                   | PA  | <i>Packera aurea</i>          | Golden Ragwort     |          |        |  |
|                   | SC  | <i>Solidago caesia</i>        | Grey's Goldenrod   |          |        |  |
|                   | SH  | <i>Sporobolus heterolepis</i> | Prairie Dropseed   |          |        |  |
|                   | VSt | <i>Viola sororia</i>          | Common Blue Violet |          |        |  |
|                   | VSt | <i>Viola striata</i>          | Cream Violet       |          |        |  |
|                   | ZA  | <i>Zizia aurea</i>            | Golden Alexanders  |          |        |  |

Grassy Meadow (Area D)

| No-mow grass seed mix (https://www.ernstseed.com/product/ernst-solar-farm-seed-mix/) supplemented with the following grasses (plugs) in drifts: |                                |                   |          |      |  | Notes |
|---|--------------------------------|-------------------|----------|------|--|-------|
| Key   | Botanical Name                 | Common Name       | Quantity | Size |  |       |
| AV  | <i>Andropogon virginicus</i>   | Broomsedge        | TBD      |      |  |       |
| ES  | <i>Eragrostis spectabilis</i>  | Purple Love Grass |          |      |  |       |
| SC  | <i>Schizachyrium scoparium</i> | Little Bluestem   |          |      |  |       |

Bulbs (Areas A - D)

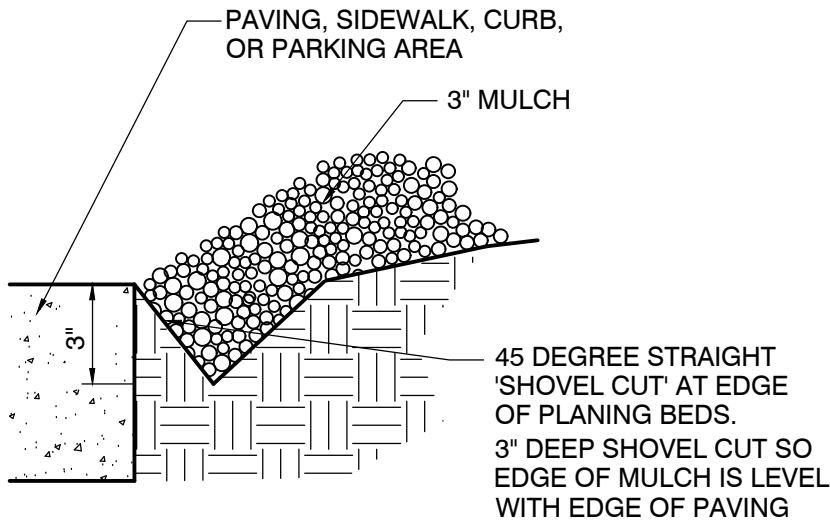
| Key | Botanical Name            | Common Name    | Quantity | Size | Notes  |
|-----|---------------------------|----------------|----------|------|--|
| NA  | <i>Narcissus</i>          | Daffodils      | TBD      |      | Variety of yellow and white daffodils for continuous spring color. Meadow drifts |
| MA  | <i>Muscato armeniacum</i> | Grape Hyacinth |          |      | Blue flowers. Plant in woodland edge   |
| GA  | <i>Galanthus</i>          | Snowdrops      |          |      | White flowers, early Spring. Plant in woodland edge                              |

Possible Rain Garden - Area A

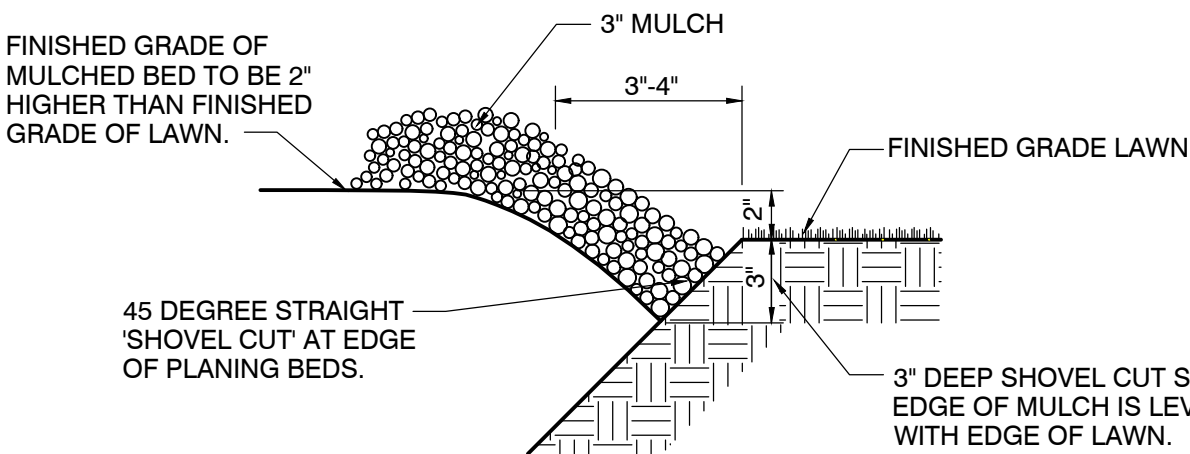
| Key | Botanical Name            | Common Name       | Quantity | Size | Notes  |
|-----|---------------------------|-------------------|----------|------|--|
| QB  | <i>Quercus bicolor</i>    | Swamp White Oak   |          |      | Suggested Woody plants for possible raingarden |
| CA  | <i>Clethra alnifolia</i>  | Summersweet       |          |      |  |
| HV  | <i>Hamamelis vernalis</i> | Ozark Witch Hazle |          |      |  |

PLANTING NOTES:

- EXISTING TOPSOIL ON SITE MAY BE UNSUITABLE FOR REUSE. CONTRACTOR MUST PROVIDE IMPORTED TOPSOIL OR AMEND EXISTING TOPSOIL TO MEET REQUIREMENTS OUTLINED IN THE SPECIFICATIONS. CONTRACTOR MUST SUBMIT SOIL TEST ANALYSIS REPORT, INCLUDING AMENDMENT RECOMMENDATIONS, FOR EITHER IMPORTED TOPSOIL OR AMENDED EXISTING TOPSOIL. TOPSOIL MUST BE AMENDED AND RETESTED PRIOR TO PLANTING OPERATIONS.
- ALL PLANT LOCATIONS SHALL BE STAKED IN THE FIELD AND LOCATIONS APPROVED BY THE LANDSCAPE ARCHITECT PRIOR TO PLANTING.
- HOLES FOR TREES AND SHRUBS SHALL BE DUG IN ACCORDANCE TO THE DIMENSIONS PROVIDED ON THE PLANTING DETAIL, AND BACKFILLED WITH APPROVED SOIL AS OUTLINED IN THE SPECIFICATIONS.
- TOPSOIL WITH A QUALITY ORGANIC SOIL AMENDMENT SHALL BE USED FOR ALL PLANTING AND SEEDING OPERATIONS.
- NOTIFY ALL UTILITY COMPANIES AND LOCATE ALL EXISTING AND NEW UTILITIES PRIOR TO EXCAVATING PLANT PITS. PLANT LOCATIONS MAY BE ADJUSTED IN THE FIELD TO AVOID INTERFERENCE WITH UNDERGROUND UTILITIES, WITH APPROVAL OF THE LANDSCAPE ARCHITECT.
- SHOULD ANY DISCREPANCY ARISE BETWEEN THE PLANTING PLAN AND THE PLANTING SCHEDULE, THE PLAN SHALL GOVERN AS TO THE QUANTITY OF PLANT MATERIAL TO BE INSTALLED.
- ALL PLANT MATERIAL SHALL BE OF NURSERY STOCK QUALITY AS DEFINED BY THE AMERICAN NURSERY AND LANDSCAPE ASSOCIATION. ALL PLANT MATERIAL TO BE GUARANTEED TO LIVE AT LEAST 18 MONTHS AFTER COMPLETION OF THE PROJECT.
- ALL NON-BIODEGRADABLE ROOT WRAPPING TO BE REMOVED COMPLETELY BEFORE PLANTING. REMOVE WIRE BASKETS FROM TOP AND SIDES OF BALL.
- ALL PLANT MATERIAL SHALL BE APPROVED UPON ARRIVAL TO THE SITE. NOTIFY THE LANDSCAPE ARCHITECT A MINIMUM OF THREE DAYS PRIOR TO DELIVERY.
- PROPOSED PLANT MATERIAL MAY BE SUBSTITUTED BY SIMILAR PLANTS, SUBJECT TO APPROVAL BY THE LANDSCAPE ARCHITECT.
- MULCH AROUND TREES AND SHRUBS SHALL BE AN AGED, DOUBLE SHREDDED HARDWOOD BARK MULCH OR COMPOSTED LEAF MULCH. MULCH SHALL BE FREE OF WEEDS. GRASS CLIPPINGS ARE NOT ACCEPTABLE. MULCH SHALL BE PLACED EVEN AND LEVEL TO A DEPTH OF 3". NO MULCH SHALL BE PILED AGAINST TRUNKS, STEMS, CROWNS, OR ROOT FLARES AT BASE OF TREES AND SHRUBS.
- TREES IN LAWN AREA SHALL BE PLACED IN A 4' DIAMETER MULCH BED CENTERED AROUND THE TREE TRUNK. SHRUBS SHALL BE PLACED IN A CONTINUOUS MULCHED BED.



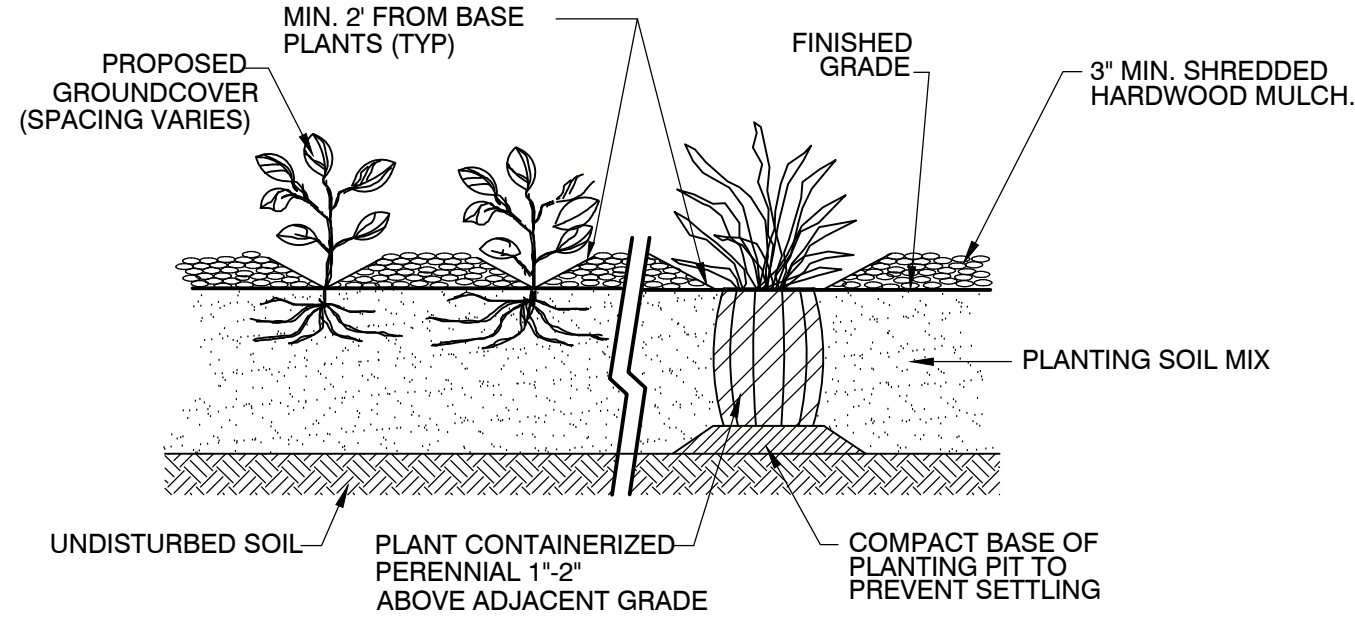
TYPICAL EDGE - MULCH TO PAVING



TYPICAL EDGE - MULCH TO LAWN

DETAIL- TYPICAL MULCH EDGES

N.T.S.



DETAIL- ORNAMENTAL GRASS / PERENNIAL PLANTING

N.T.S.

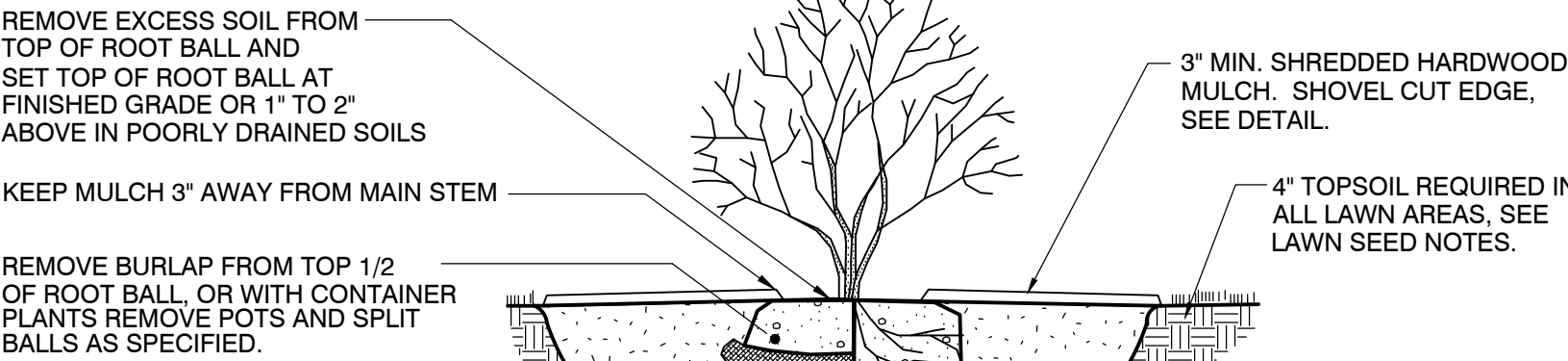
LAWN SEEDING NOTES:

- APPLY LAWN SEED TO ALL AREAS INDICATED ON PLAN AND ALL AREAS DISTURBED BY CONSTRUCTION.
- ALL NEW LAWN AREAS TO BE SEEDED TO RECEIVE 4" MINIMUM DEPTH OF TOPSOIL (DEPTH AFTER SETTLEMENT AND WATERING).
- EXISTING TOPSOIL ON SITE MAY BE UNSUITABLE FOR REUSE. CONTRACTOR MUST PROVIDE IMPORTED TOPSOIL OR AMEND EXISTING TOPSOIL TO MEET REQUIREMENTS OUTLINED IN THE SPECIFICATIONS. CONTRACTOR MUST SUBMIT SOIL TEST ANALYSIS REPORT, INCLUDING AMENDMENT RECOMMENDATIONS, FOR EITHER IMPORTED TOPSOIL OR AMENDED EXISTING TOPSOIL. TOPSOIL MUST BE AMENDED AND RETESTED PRIOR TO PLANTING OPERATIONS.
- MULCH ALL SEEDED AREAS WITH CLEAN STRAW.
- WATER AND MAINTAIN ALL SEEDED AREAS.
- RESEED BARE OR THIN AREAS AS DIRECTED BY THE LANDSCAPE ARCHITECT.
- LAWN SEED MIX / ATHLETIC FIELD MIX: SEED MIX SPECIFICALLY FORMULATED FOR ATHLETIC FIELDS AND HIGH USE LAWN AREAS, WITH A COMPLETE MICROBIAL SEED TREATMENT PACKAGE (MYCO) AND SEED COATING SYSTEM FOR GERMINATION: PENNINGTON SMART SEED PRO ATHLETIC FIELD MIX, OR APPROVED EQUAL, APPLIED AT 6 TO 8 LBS/ 1,000 SQ. FT.
- BASIN SEED MIX: OVERSEED PERENNIAL PLUGS WITH ANNUAL RYE SEED MIX, APPLIED AT 5 LBS/ACRE.

NOTES:

SET PLANTS PLUMB AND FACE TO GIVE BEST APPEARANCE TO ADJACENT AREAS.

PRUNE ONLY TO REMOVE DEAD OR DAMAGED BRANCHES.



REMOVE EXCESS SOIL FROM TOP OF ROOT BALL AND SET TOP OF ROOT BALL AT FINISHED GRADE OR 1" TO 2" ABOVE IN POORLY DRAINED SOILS

KEEP MULCH 3" AWAY FROM MAIN STEM

REMOVE BURLAP FROM TOP 1/2 OF ROOT BALL, OR WITH CONTAINER PLANTS REMOVE POTS AND SPLIT BALLS AS SPECIFIED.

PLANTING MIX, SEE SPECIFICATIONS, WATER THOROUGHLY TO ELIMINATE AIR POCKETS.

PLANT TO BE PLACED ON UNDISTURBED SUBGRADE

USE DIGGING FORK NOT SPADE TO PREVENT GLAZING OF PIT EDGES.

PLANTING PIT TO BE 3 TO 5 TIMES THE WIDTH OF THE ROOT BALL

BALLED AND BURLAPPED SHRUBS.

BARE ROOT OR CONTAINER SHRUBS.

BREAK DOWN SIDES OF PLANTING PIT WHEN BACKFILLING.

PLANTING MIX, SEE SPECIFICATIONS, WATER THOROUGHLY TO ELIMINATE AIR POCKETS.

PLANT TO BE PLACED ON UNDISTURBED SUBGRADE

USE DIGGING FORK NOT SPADE TO PREVENT GLAZING OF PIT EDGES.

PLANTING PIT TO BE 3 TO 5 TIMES THE WIDTH OF THE ROOT BALL

BALLED AND BURLAPPED SHRUBS.

BARE ROOT OR CONTAINER SHRUBS.

BREAK DOWN SIDES OF PLANTING PIT WHEN BACKFILLING.

PLANTING MIX, SEE SPECIFICATIONS, WATER THOROUGHLY TO ELIMINATE AIR POCKETS.

PLANT TO BE PLACED ON UNDISTURBED SUBGRADE

USE DIGGING FORK NOT SPADE TO PREVENT GLAZING OF PIT EDGES.

PLANTING PIT TO BE 3 TO 5 TIMES THE WIDTH OF THE ROOT BALL

BALLED AND BURLAPPED SHRUBS.

BARE ROOT OR CONTAINER SHRUBS.

BREAK DOWN SIDES OF PLANTING PIT WHEN BACKFILLING.

PLANTING MIX, SEE SPECIFICATIONS, WATER THOROUGHLY TO ELIMINATE AIR POCKETS.

PLANT TO BE PLACED ON UNDISTURBED SUBGRADE

USE DIGGING FORK NOT SPADE TO PREVENT GLAZING OF PIT EDGES.

PLANTING PIT TO BE 3 TO 5 TIMES THE WIDTH OF THE ROOT BALL

BALLED AND BURLAPPED SHRUBS.

BARE ROOT OR CONTAINER SHRUBS.

BREAK DOWN SIDES OF PLANTING PIT WHEN BACKFILLING.

PLANTING MIX, SEE SPECIFICATIONS, WATER THOROUGHLY TO ELIMINATE AIR POCKETS.

PLANT TO BE PLACED ON UNDISTURBED SUBGRADE

USE DIGGING FORK NOT SPADE TO PREVENT GLAZING OF PIT EDGES.

PLANTING PIT TO BE 3 TO 5 TIMES THE WIDTH OF THE ROOT BALL

BALLED AND BURLAPPED SHRUBS.

BARE ROOT OR CONTAINER SHRUBS.

BREAK DOWN SIDES OF PLANTING PIT WHEN BACKFILLING.

PLANTING MIX, SEE SPECIFICATIONS, WATER THOROUGHLY TO ELIMINATE AIR POCKETS.

PLANT TO BE PLACED ON UNDISTURBED SUBGRADE

USE DIGGING FORK NOT SPADE TO PREVENT GLAZING OF PIT EDGES.

PLANTING PIT TO BE 3 TO 5 TIMES THE WIDTH OF THE ROOT BALL

BALLED AND BURLAPPED SHRUBS.

BARE ROOT OR CONTAINER SHRUBS.

BREAK DOWN SIDES OF PLANTING PIT WHEN BACKFILLING.

PLANTING MIX, SEE SPECIFICATIONS, WATER THOROUGHLY TO ELIMINATE AIR POCKETS.

PLANT TO BE PLACED ON UNDISTURBED SUBGRADE

USE DIGGING FORK NOT SPADE TO PREVENT GLAZING OF PIT EDGES.

PLANTING PIT TO BE 3 TO 5 TIMES THE WIDTH OF THE ROOT BALL

BALLED AND BURLAPPED SHRUBS.

BARE ROOT OR CONTAINER SHRUBS.

BREAK DOWN SIDES OF PLANTING PIT WHEN BACKFILLING.

PLANTING MIX, SEE SPECIFICATIONS, WATER THOROUGHLY TO ELIMINATE AIR POCKETS.

PLANT TO BE PLACED ON UNDISTURBED SUBGRADE

USE DIGGING FORK NOT SPADE TO PREVENT GLAZING OF PIT EDGES.

PLANTING PIT TO BE 3 TO 5 TIMES THE WIDTH OF THE ROOT BALL

BALLED AND BURLAPPED SHRUBS.

BARE ROOT OR CONTAINER SHRUBS.

BREAK DOWN SIDES OF PLANTING PIT WHEN BACKFILLING.

PLANTING MIX, SEE SPECIFICATIONS, WATER THOROUGHLY TO ELIMINATE AIR POCKETS.

PLANT TO BE PLACED ON UNDISTURBED SUBGRADE

USE DIGGING FORK NOT SPADE TO PREVENT GLAZING OF PIT EDGES.

PLANTING PIT TO BE 3 TO 5 TIMES THE WIDTH OF THE ROOT BALL

BALLED AND BURLAPPED SHRUBS.

BARE ROOT OR CONTAINER SHRUBS.

BREAK DOWN SIDES OF PLANTING PIT WHEN BACKFILLING.

PLANTING MIX, SEE SPECIFICATIONS, WATER THOROUGHLY TO ELIMINATE AIR POCKETS.

PLANT TO BE PLACED ON UNDISTURBED SUBGRADE

USE DIGGING FORK NOT SPADE TO PREVENT GLAZING OF PIT EDGES.

PLANTING PIT TO BE 3 TO 5 TIMES THE WIDTH OF THE ROOT BALL

BALLED AND BURLAPPED SHRUBS.

BARE ROOT OR CONTAINER SHRUBS.

BREAK DOWN SIDES OF PLANTING PIT WHEN BACKFILLING.

PLANTING MIX, SEE SPECIFICATIONS, WATER THOROUGHLY TO ELIMINATE AIR POCKETS.

PLANT TO BE PLACED ON UNDISTURBED SUBGRADE

USE DIGGING FORK NOT SPADE TO PREVENT GLAZING OF PIT EDGES.

PLANTING PIT TO BE 3 TO 5 TIMES THE WIDTH OF THE ROOT BALL

BALLED AND BURLAPPED SHRUBS.

BARE ROOT OR CONTAINER SHRUBS.

BREAK DOWN SIDES OF PLANTING PIT WHEN BACKFILLING.

PLANTING MIX, SEE SPECIFICATIONS, WATER THOROUGHLY TO ELIMINATE AIR POCKETS.

PLANT TO BE PLACED ON UNDISTURBED SUBGRADE

USE DIGGING FORK NOT SPADE TO PREVENT GLAZING OF PIT EDGES.

PLANTING PIT TO BE 3 TO 5 TIMES THE WIDTH OF THE ROOT BALL

BALLED AND BURLAPPED SHRUBS.

BARE ROOT OR CONTAINER SHRUBS.

BREAK DOWN SIDES OF PLANTING PIT WHEN BACKFILLING.

PLANTING MIX, SEE SPECIFICATIONS, WATER THOROUGHLY TO ELIMINATE AIR POCKETS.

PLANT TO BE PLACED ON UNDISTURBED SUBGRADE

USE DIGGING FORK NOT SPADE TO PREVENT GLAZING OF PIT EDGES.

PLANTING PIT TO BE 3 TO 5 TIMES THE WIDTH OF THE ROOT BALL

BALLED AND BURLAPPED SHRUBS.

BARE ROOT OR CONTAINER SHRUBS.

BREAK DOWN SIDES OF PLANTING PIT WHEN BACKFILLING.

PLANTING MIX, SEE SPECIFICATIONS, WATER THOROUGHLY TO ELIMINATE AIR POCKETS.

PLANT TO BE PLACED ON UNDISTURBED SUBGRADE

USE DIGGING FORK NOT SPADE TO PREVENT GLAZING OF PIT EDGES.

PLANTING PIT TO BE 3 TO 5 TIMES THE WIDTH OF THE ROOT BALL

BALLED AND BURLAPPED SHRUBS.

BARE ROOT OR CONTAINER SHRUBS.

BREAK DOWN SIDES OF PLANTING PIT WHEN BACKFILLING.

PLANTING MIX, SEE SPECIFICATIONS, WATER THOROUGHLY TO ELIMINATE AIR POCKETS.

PLANT TO BE PLACED ON UNDISTURBED SUBGRADE

USE DIGGING FORK NOT SPADE TO PREVENT GLAZING OF PIT EDGES.

PLANTING PIT TO BE 3 TO 5 TIMES THE WIDTH OF THE ROOT BALL

BALLED AND BURLAPPED SHRUBS.

BARE ROOT OR CONTAINER SHRUBS.

BREAK DOWN SIDES OF PLANTING PIT WHEN BACKFILLING.

PLANTING MIX, SEE SPECIFICATIONS, WATER THOROUGHLY TO ELIMINATE AIR POCKETS.

PLANT TO BE PLACED ON UNDISTURBED SUBGRADE

USE DIGGING FORK NOT SPADE TO PREVENT GLAZING OF PIT EDGES.

PLANTING PIT TO BE 3 TO 5 TIMES THE WIDTH OF THE ROOT BALL

BALLED AND BURLAPPED SHRUBS.

BARE ROOT OR CONTAINER SHRUBS.

BREAK DOWN SIDES OF PLANTING PIT WHEN BACKFILLING.

PLANTING MIX, SEE SPECIFICATIONS, WATER THOROUGHLY TO ELIMINATE AIR POCKETS.

PLANT TO BE PLACED ON UNDISTURBED SUBGRADE

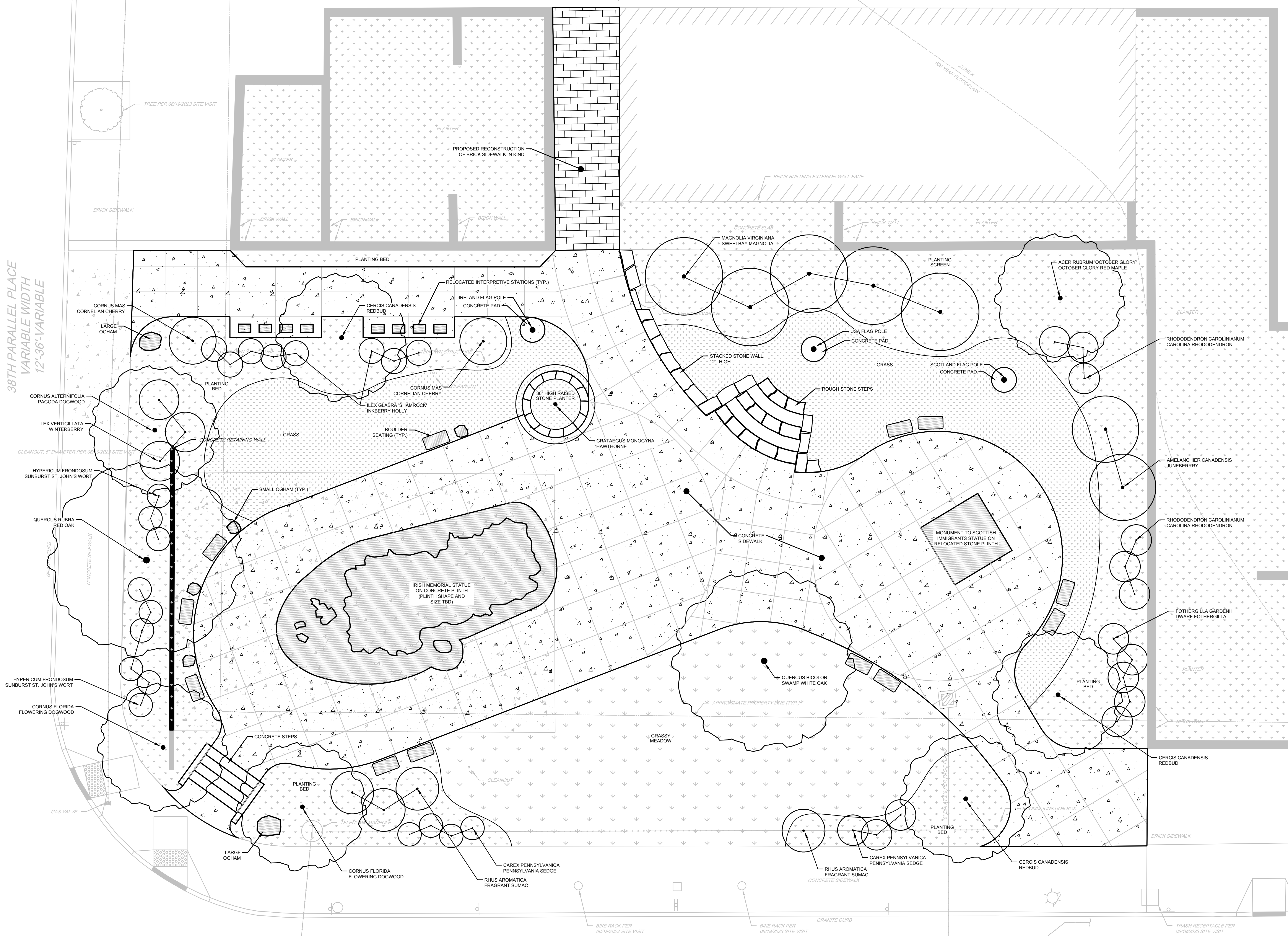
USE DIGGING FORK NOT SPADE TO PREVENT GLAZING OF PIT EDGES.

PLANTING PIT TO BE 3 TO 5 TIMES THE WIDTH OF THE ROOT BALL

BALLED AND BURLAPPED SHR



38TH PARALLEL PLACE  
VARIABLE WIDTH  
12'-36'-VARIABLE



SPRUCE STREET  
68' WIDTH  
12'-36'-20'



# Temporary Site – Plant List

## Woodland Edge Plant Community (Areas A and B)

|            | Key     | Botanical Name                        | Common Name               | Quantity | Size                | Notes  |
|------------|---------|---------------------------------------|---------------------------|----------|---------------------|--|
| Canopy     | Ar 'OG' | <i>Acer rubrum</i> 'October Glory'    | 'October Glory' Red Maple | 1        | 2-3" cal            | Brings adjacent maple canopy to memorial space. Fall color   |
|            | MV      | <i>Magnolia virginiana</i>            | Sweetbay Magnolia         | 5        | 6-8' (2) / 4-6' (3) | Multistem. Mix sizes for grove pattern. White scented flowers Spring   |
|            | QR      | <i>Quercus rubra</i>                  | Red Oak                   | 1        | 2-3" cal            | Oak for biodiversity, structure. Transplants well  |
| Understory | AC      | <i>Amelanchier canadensis</i>         | Juneberry                 | 3        | 6-8'                | Multistem. Possibly transplant from Irish Memorial. White flowers in Spring, red berries in June                       |
|            | CA      | <i>Cornus alternifolia</i>            | Pagoda Dogwood            | 1        | 6-8'                | Spreading horizontal habit. Spring flowers and black berries   |
|            | CC      | <i>Cercis canadensis</i>              | Redbud                    | 2        | 2" cal              | variety - <i>Cercis canadensis</i> f. <i>alba</i> is   |
|            | CF      | <i>Cornus florida</i>                 | Flowering Dogwood         | 1        | 2" cal              | Spring white flowers. Fall color. Multistem. White - pink flowers, red berries. Represents 'Sceach' in Irish landscape |
|            | CM      | <i>Crataegus monogyna</i>             | Hawthorn                  | 1        | 4-5'                | Multistem. Possibly transplant from Irish Memorial. Flowers in March   |
|            | CMA     | <i>Cornus mas</i>                     | Cornelian Cherry          | 2        | 5-6'                | April-May flowers. Nice Fall color   |
| Shrubs     | FG      | <i>Fothergilla gardenii</i>           | Dwarf Fothergilla         | 5        | 3-4'                | Yellow flowers, June and July  |
|            | HF      | <i>Hypericum frondosum</i> 'Sunburst' | Sunburst St. John's Wort  | 9        | 2-3'                | Evergreen. Flowers in April  |
|            | IG 'S'  | <i>Ilex glabra</i> 'Shamrock'         | American Holly            | 8        | 2-3'                | Red berries winter   |
|            | IV      | <i>Ilex verticillata</i>              | Inkberry Holly            | 3        | 6-7'                |  |



# Temporary Site – Plant List

|                   |     |                                   |                       |     |      |  |
|-------------------|-----|-----------------------------------|-----------------------|-----|------|--|
| Herbaceous Plants | RC  | <i>Rhododendron carolinianum</i>  | Carolina Rhododendron | 6   | 3-4' | Evergreen. Pink -rose flowers in April |
|                   | AF  | <i>Athyrium felix-femina</i>      | Lady Fern             | TBD | TBD  | Add herbaceous plants in drifts        |
|                   | CP  | <i>Carex pennsylvanica</i>        | Pennsylvania Sedge    |     |      |  |
|                   | CPI | <i>Carex plantaginea</i>          | Broad leaf Sedge      |     |      |  |
|                   | Mvi | <i>Mertensia virginica</i>        | Virginia Bluebells    |     |      |  |
|                   | PA  | <i>Packera aurea</i>              | Golden Ragwort        |     |      |  |
|                   | PAC | <i>Polystichum acrostichoides</i> | Christmas Fern        |     |      |  |
|                   | SD  | <i>Stylophorum diphyllum</i>      | Woodland Poppy        |     |      |  |
|                   | VS  | <i>Viola striata</i>              | Cream Violet          |     |      |  |
|                   | ZA  | <i>Zizia aurea</i>                | Golden Alexanders     |     |      |  |

## Bulbs (Areas A - D)

| Key | Botanical Name             | Common Name    | Quantity | Size | Notes  |
|-----|----------------------------|----------------|----------|------|--|
| NA  | <i>Narcissus</i>           | Daffodils      | TBD      |      | Variety of yellow and white daffodils for continuous spring color. Meadow drifts |
| MA  | <i>Muscario armeniacum</i> | Grape Hyacinth |          |      | Blue flowers. Plant in woodland edge   |
| GA  | <i>Galanthus</i>           | Snowdrops      |          |      | White flowers, early Spring. Plant in woodland edge                              |



# Temporary Site – Plant List

## Old Field Plant Community (Area C)

|                   | Key | Botanical Name                | Common Name        | Quantity | Size   | Notes   |
|-------------------|-----|-------------------------------|--------------------|----------|--------|---|
| Understory        | CC  | <i>Cercis canadensis</i>      | Redbud             | 1        | 2" cal | Spring pink flowers. White flowering variety - <i>Cercis canadensis</i> f. <i>alba</i> is available |
|                   | CF  | <i>Cornus florida</i>         | Flowering Dogwood  | 1        | 2" cal | Spring white flowers. Fall color.   |
| Shrubs            | CP  | <i>Comptonia peregrina</i>    | Sweet Fern         | 7        | 2-3'   | Yellow - green flowers April - May. Fragrant foliage.   |
|                   | RA  | <i>Rhus aromatica</i>         | Fragrant Sumac     | 4        | 3-4'   | Yellow blooms in April. Fragrant leaves   |
| Herbaceous Plants | BC  | <i>Bouteloua curtipendula</i> | Sideoats gramma    | TBD      |        |   |
|                   | ES  | <i>Eragrostis spectabilis</i> | Purple Love Grass  |          |        |   |
|                   | PA  | <i>Packera aurea</i>          | Golden Ragwort     |          |        |   |
|                   | SC  | <i>Solidago caesia</i>        | Grey's Goldenrod   |          |        |   |
|                   | SH  | <i>Sporobolus heterolepis</i> | Prairie Dropseed   |          |        |   |
|                   | VSt | <i>Viola sororia</i>          | Common Blue Violet |          |        |   |
|                   | VSt | <i>Viola striata</i>          | Cream Violet       |          |        |   |
|                   | ZA  | <i>Zizia aurea</i>            | Golden Alexanders  |          |        |   |

## Grassy Meadow (Area D)

No-mow grass seed mix (<https://www.ernstseed.com/product/ernst-solar-farm-seed-mix/>)  
supplemented with the following grasses (plugs) in drifts:

| Key | Botanical Name                 | Common Name       | Quantity | Size | Notes |
|-----|--------------------------------|-------------------|----------|------|-------|
| AV  | <i>Andropogon virginicus</i>   | Broomsedge        | TBD      |      |       |
| ES  | <i>Eragrostis spectabilis</i>  | Purple Love Grass |          |      |       |
| SC  | <i>Schizachyrium scoparium</i> | Little Bluestem   |          |      |       |



September 6, 2023

Alex M. Smith  
The Philadelphia Art Commission  
One Parkway, 1515 Arch Street, 13<sup>th</sup> Floor  
Philadelphia, PA 19102

Re: OACCE Letter for the Temporary Relocation of Irish and Scottish Memorials

Dear Alex:

I am submitting this letter to notify the Philadelphia Art Commission that the Office of Arts, Culture and the Creative Economy (OACCE) has reviewed and has no exceptions to the proposal to temporarily relocate the City-owned Irish and Scottish memorials from their current location at Front and Chestnut Streets to the southwest corner of Foglietta Plaza at Spruce Street and 38<sup>th</sup> Parallel Place. This temporary move is being proposed by the Pennsylvania Department of Transportation (PennDOT) in order to facilitate the I-95 CAP project and future Penn's Landing Park construction, from Fall 2023 - Spring 2028.

Per OACCE's discussions with PennDOT and the City's Office of Transportation, Infrastructure and Sustainability (OTIS), we understand that this temporary relocation work will be provided by an approved professional public art conservator, in order to safeguard the memorials and ensure that the work will be in keeping with Conservation best practices. We also submit this letter with the understanding that OTIS and PennDOT are engaging the appropriate neighborhood residents and stakeholder groups to ensure the needs and input of the adjacent community is being considered in the process of the relocation. We also understand and have agreed that the memorials will be cleaned and conserved by professional public art conservator as needed upon their temporary installation at Foglietta Plaza, and upon their permanent re-installation in their final locations as approved by the Philadelphia Art Commission, once the I-95 CAP construction work is completed.

OACCE looks forward to continue working with OTIS and PennDOT to provide any additional support to facilitate these temporary relocations as needed.

Should you require any additional information please do not hesitate to call me at 215.686.4596.

Sincerely,



Marguerite Anglin, RA, NOMA  
Public Art Director  
Office of Arts, Culture and the Creative Economy





Monument located at Front &  
Chestnut Sts., Philadelphia, PA

Board of Directors:

Robert M. Gessler, President  
Norbert McGettigan, Jr., Vice-President  
\* John F. Donovan, Secretary / Treasurer

Francis J. Moran, Esq., General Counsel  
James J. Coyne, Jr., President Emeritus

Michael J. Bradley, Jr.  
Edward P. Costello  
Michael J. Flynn  
Christine Kinealy, PhD

\* Kathy McGee Burns  
James J. Murphy, PhD  
\* Kathleen M. Sullivan

Rev. Edward E. Brady, Chaplain

Directors Emeriti:

Hon. Edward J. Bradley  
John J. Dougherty  
Patrick B. Gillespie  
\* Robert S. Hurst  
John J. Luke, Jr.  
Drew J. Monaghan  
John J. O'Connell  
Thomas P. O'Malley  
Thomas O. Peterman  
James J. White, IV

\* Past President

September 4, 2023

Society Hill Civic Association  
P.O. Box 63503  
Philadelphia, PA 19147

On behalf of the Board of Directors of the Irish Memorial, I write this letter in support of Buckley & Company's proposal to temporarily relocate the Irish Memorial to the site at the corner of Spruce Street and the 38<sup>th</sup> Parallel. In our dealings with Buckley & Company we have found them to be true to their word.

We recognize that the SHCA has future plans for this site and believe that the improvements made by Buckley for the temporary placement of the Irish and Scottish Memorials will leave the site better suited for these uses. Furthermore, we stress that this will be a temporary home for the Irish Memorial and we look forward to our final placement on the I-95 cap.

The Irish Memorial has been a part of the Society Hill community for over two decades and look forward to continue being a good neighbor.

Thank you for your time and consideration.

Respectfully submitted,

Robert Gessler  
President



**PALMER & GRAY LLP**  
ATTORNEYS AND COUNSELORS AT LAW

GREAT VALLEY CORPORATE CENTER  
5 GREAT VALLEY PARKWAY  
SUITE 234  
MALVERN, PA 19355

STEPHEN H. PALMER  
PA AND FL BAR

TELEPHONE 610.889.2064  
FAX 610.884.7994

August 10, 2023

Mr. Alex Smith

The Philadelphia Art Commission

One Parkway, 1515 Arch Street, 13<sup>th</sup> floor

Philadelphia, PA 19102

Re: The Saint Andrew's Society of Philadelphia Monument in honor of  
Scottish Immigrants

Dear Mr. Smith:

I am a member of the Board of Directors of the Saint Andrew's Society of Philadelphia and Chair the Committee charged with oversight regarding our Monument on Front Street.

Our Society was founded in Philadelphia in 1747, and our Monument was built with Society funds through donations from many, was dedicated 12 years ago and was donated to the City of Philadelphia. Our Monument attracts numerous visitors, as does the adjacent Irish Monument, and is the site of Society events throughout the year, which are generally open to the public. The Monument is yet another outstanding example of public and historic art throughout the City.

As you know, the Cap over I-95 is being repaired and rebuilt beginning this year, which necessitates the relocation of our Monument for months to permit construction in the area where it stands today. The Monument will eventually return to its permanent placement. While the Monument could be temporarily relocated within the construction zone, access to the Monument by visitors and our Society members would be substantially impaired



Mr. Alex Smith

August 10, 2023

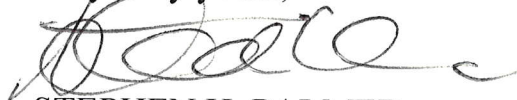
Page 2

and, in my opinion, would be unsafe for pedestrians. Such a temporary location would interfere with the use and appreciation of the Monument by tourists and Society members. It has now been proposed that the site for our temporary relocation would be accessible if located in Foglietta Park and use of the Monument would be unaffected.

I am writing to express the whole-hearted endorsement of this option by the Saint Andrew's Society, and we respectfully urge the Art Commission to approve the proposed temporary relocation to Foglietta Park.

I would be pleased to answer any questions that the Commission may have.

Very truly yours,

A handwritten signature in dark ink, appearing to read "S. Palmer", with a stylized flourish at the end.

STEPHEN H. PALMER

Cc: Mark Duane Edward Lupke, President (via email only)

James MacFarlane, First Vice President (via email only)

Frank Bonito, Hill International, Inc. (via email only)