



Aramingo Avenue Safety Project

Project Update
August 2023

OFFICE OF 
**TRANSPORTATION,
INFRASTRUCTURE
& SUSTAINABILITY**



Who are we?

Office of Complete Streets

A Division of the Office of Transportation, Infrastructure, and Sustainability

Mission Statement:

Whether by bus, by bike, on foot, or by car, the Office of Complete Streets is leading innovation and engagement to ensure Philadelphians of all ages and abilities can travel safely.



Agenda

- Project Scope
- Existing Conditions
- Questions & Activity



Questions & Activity

Menti.com

- Code: 1438 9965



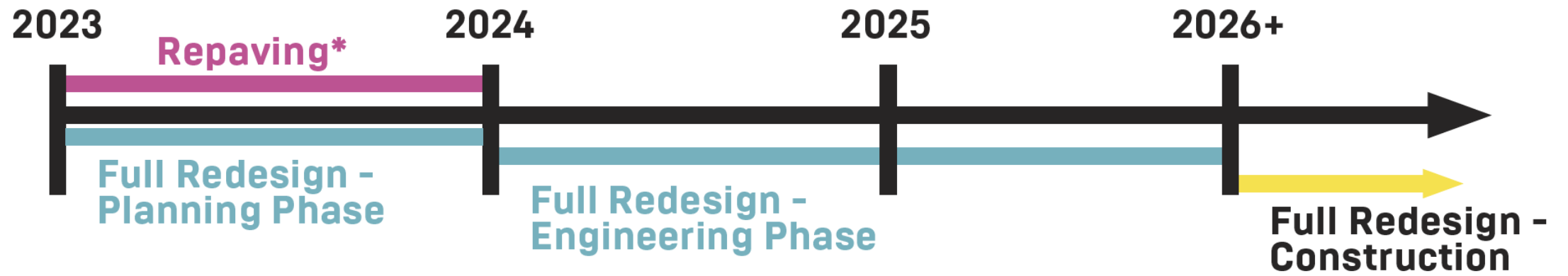


Project Scope

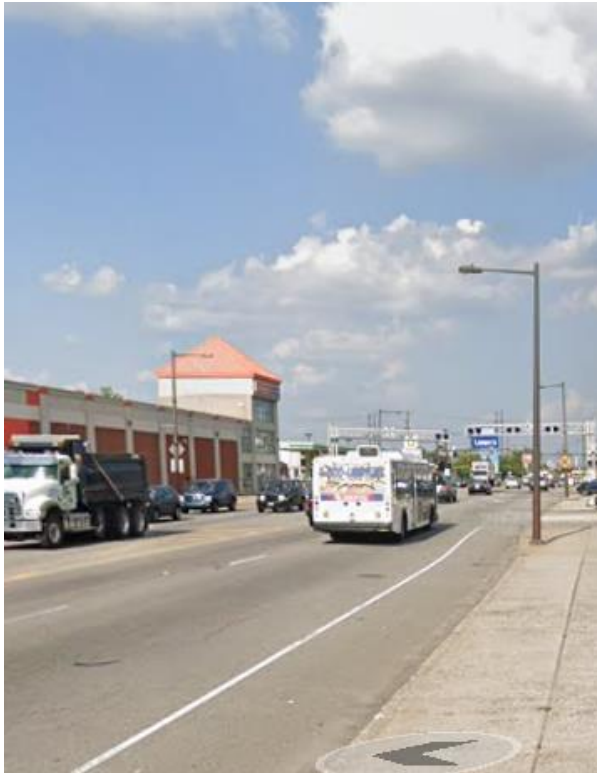




Project Timeline



Repaving



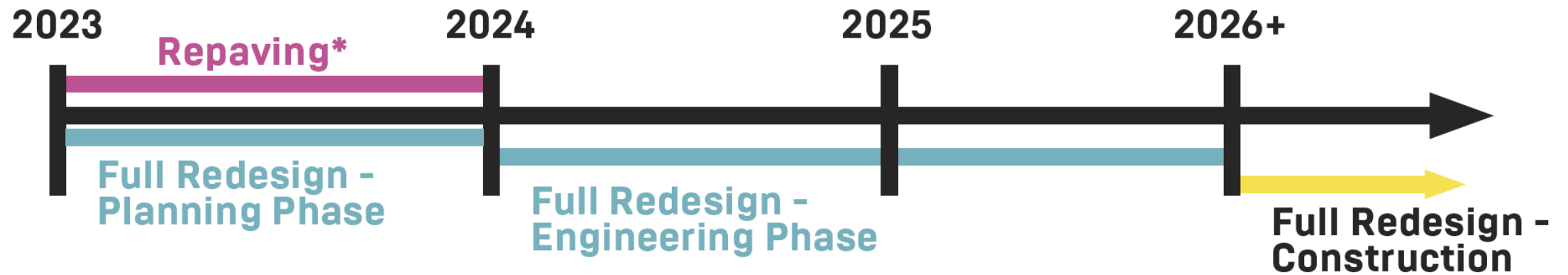
Aramingo Today



Similar Treatment (15th Street)

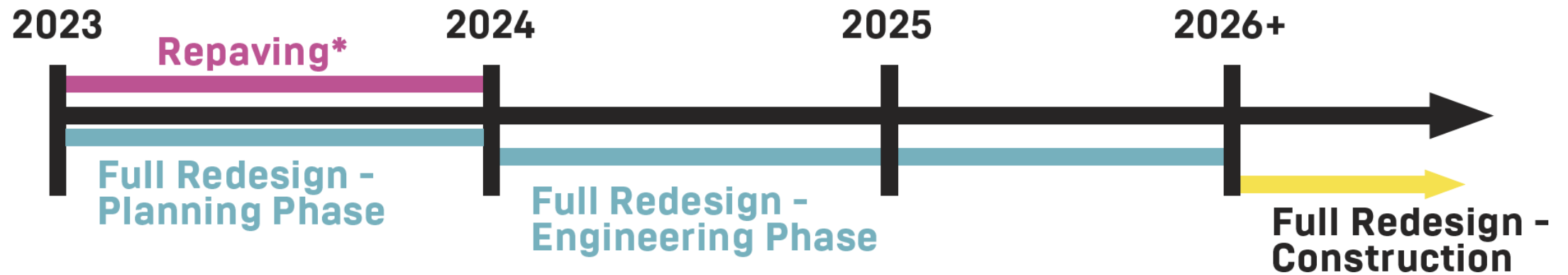
- Fresh paving and striping on entire corridor
- Separating bike lanes from car lanes using flex posts
- Centerline posts to make turning safer
- No impact on parking/number of lanes
- Paving happening now, restriping to follow

Full Redesign



- **What** – Aramingo Avenue Safety Project – Full Redesign
- **Where** – Between Allegheny Avenue and Wheatsheaf Lane

Full Redesign



- **What** – Aramingo Avenue Safety Project – Full Redesign
- **Where** – Between Allegheny Avenue and Wheatsheaf Lane

Full Redesign

- **Why**

- Vision Zero priority
- PCPC District Plan Focus Area
- SEPTA Bus Revolution – Better bus service coming

River Wards District Plan Rendering (2015):



Future vision of Aramingo Town Center at Aramingo and Castor Avenues. View looking south down Aramingo Avenue.



Potential Project Elements



Safer intersections



Streetscape improvements (sidewalks, lighting, etc.)



Planting/landscaping



Better bus stops



Safer bike paths

Project Timeline – Planning Phase

2023

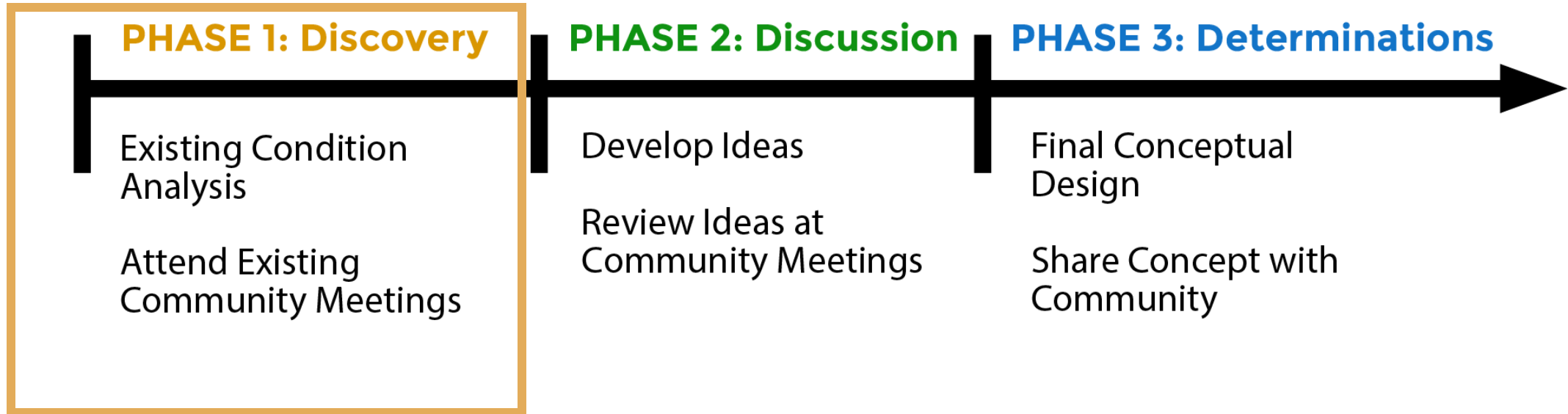
Summer

2023

Fall

2023

Winter



We're Here



Aramingo Avenue Today

Summary of Existing Conditions Work





Aramingo Avenue Crash History

173

Crashes

8

Serious Injuries

461

People Involved

7

Fatalities

PennDOT Data (2017 – 2021)

Key Crash Trends



High concentration of **pedestrians** and **motorcyclists** in severe cases



Higher than city average **red-light running** rate



Large number of angled and **left-turn crashes** (> 25%)



Pedestrian crashes most often occurred at **3 – 9 PM** (53%)

Public Transit

- Few amenities or comforts for riders
- SEPTA adding bus service through its Bus Revolution project



Bus Stop at Aramingo/Castor

Traffic



- Heavy traffic
- Concern of traffic spillover into neighborhood
- Alternative route for I-95
- Truck traffic
- Excess capacity evening/overnight
- Large parking lots/many driveways

Next Step: Phase 2





Activity

9/6/2023



Aramingo Avenue Safety Project



Questions & Activity

Menti.com

- Code: 1438 9965

Questions for us?

Contact:

Andrew.Simpson@phila.gov

