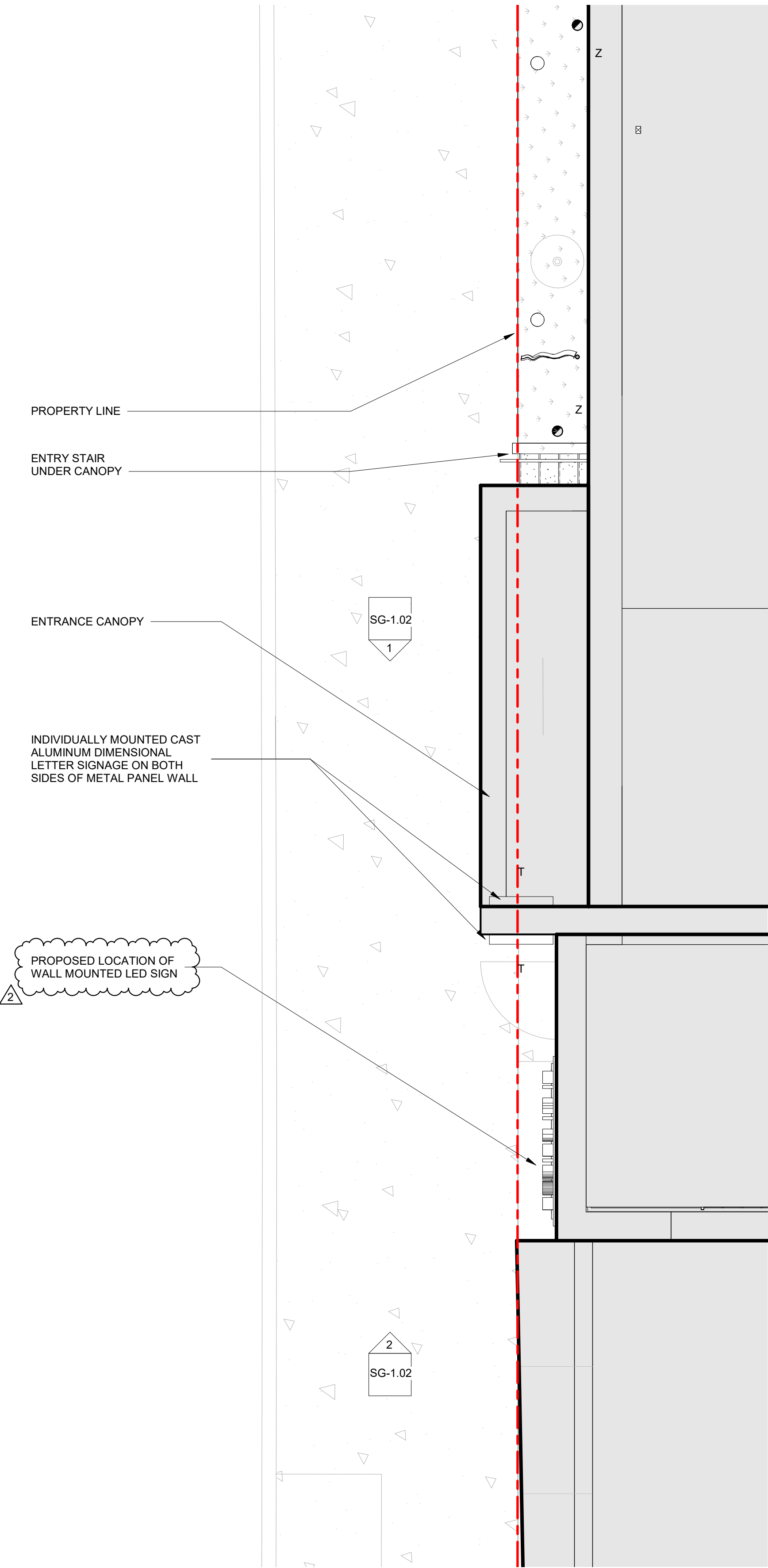
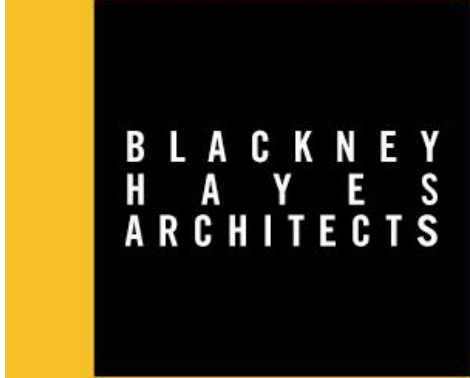
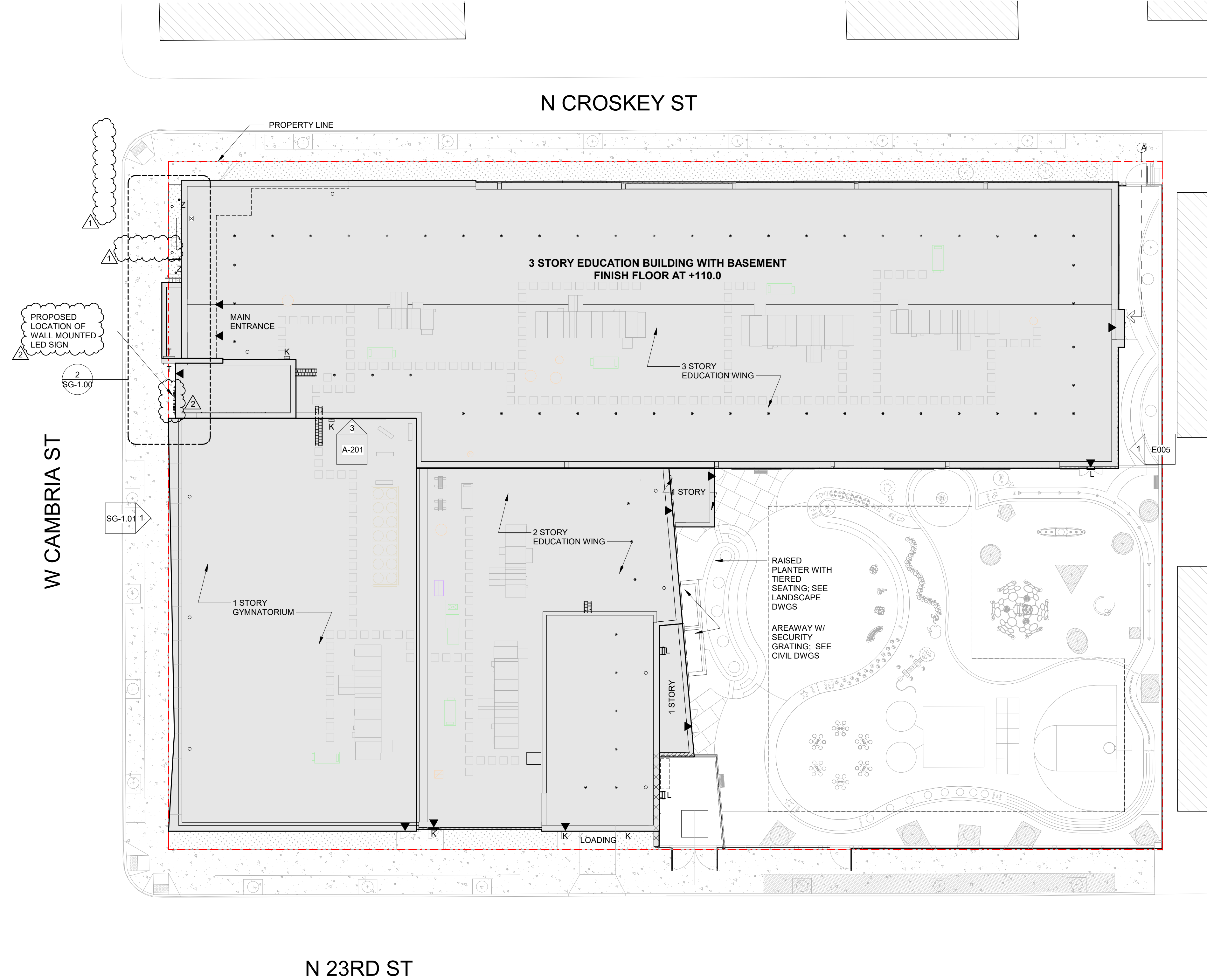


2 ENLARGED SITE PLAN - SIGNAGE
1/4" = 1'-0"



1 SITE PLAN - SIGNAGE
1/16" = 1'-0"



phone: 215.829.0922 x###
CONTACT PERSON: PM Name

OWNER
SCHOOL DISTRICT OF PHILADELPHIA
Phone: 215-400-4740
Attn: Nicole Ward, Design Manager

STRUCTURAL ENGINEER

MACINTOSH ENGINEERING
Phone: 484-475-2180
Attn: Steve Krumenacker

M/P/FP/LOW VOLT ENGINEER

SNYDER HOFFMAN ASSOCIATES
Phone: 610-694-8020
Attn: Jeff Machik

ELECTRICAL ENGINEER

DGW ELECTRICAL ENGINEERING
Phone: 215-354-9161
Attn: Grazyna Plichta

CIVIL ENGINEER

KSE
Phone: 215-925-0425
Attn: Sean Marzoff

KITCHEN DESIGNER

NASH DESIGN SERVICES
Phone: 717-484-0133
Attn: Taff S. Nash

Project:

T.M. Peirce
Elementary School

Project Address:
2300 W. CAMBRIA STREET
PHILADELPHIA, PA 19132

Sheet Title:

SIGNAGE

Seal

DUTY TO INSPECT CONTRACT DOCUMENTS PRIOR TO STARTING WORK:

Any party who relies in part or whole on the content of these Construction Documents shall, before beginning any work, be responsible for fully inspecting the complete set of Contract Documents, including all Drawings, Specifications, and Addenda, for completeness, conflicts, scope of work, and suitability for constructing the building. All parties relying on these documents represent that they have expertise in the area of their responsibility and are knowledgeable regarding industry standards, product requirements and code requirements and therefore are qualified to fully evaluate and interpret the contract documents. All parties relying on these documents must, prior to beginning work, submit all requests for clarifications and additional information to the Architect in writing. All parties who begin work hereby certify that the documents are suitable for their intended purposes unless noted in specific written exception beforehand.

Warning: Actual conditions may vary from conditions shown on this drawing. Confirm all information in the field before proceeding with any work and notify the Architect in writing if a variation is discovered.

This drawing is not to be copied or transmitted in any form without the express written authorization of Blackney Hayes Architects. All ideas and concepts depicted or suggested in this drawing are the property of Blackney Hayes Architects.

Date	Comments	
11/14/2022	EXTERIOR SIGNAGE CLARIFICATIONS	1
04/19/2023	EXTERIOR SIGNAGE CLARIFICATIONS	2

BHA Job Number: 20-038

Scale: As indicated

Drawn By: DN

Checked By: PG

Approved By: TH

Sheet No.

SG-1.00

NOT FOR CONSTRUCTION

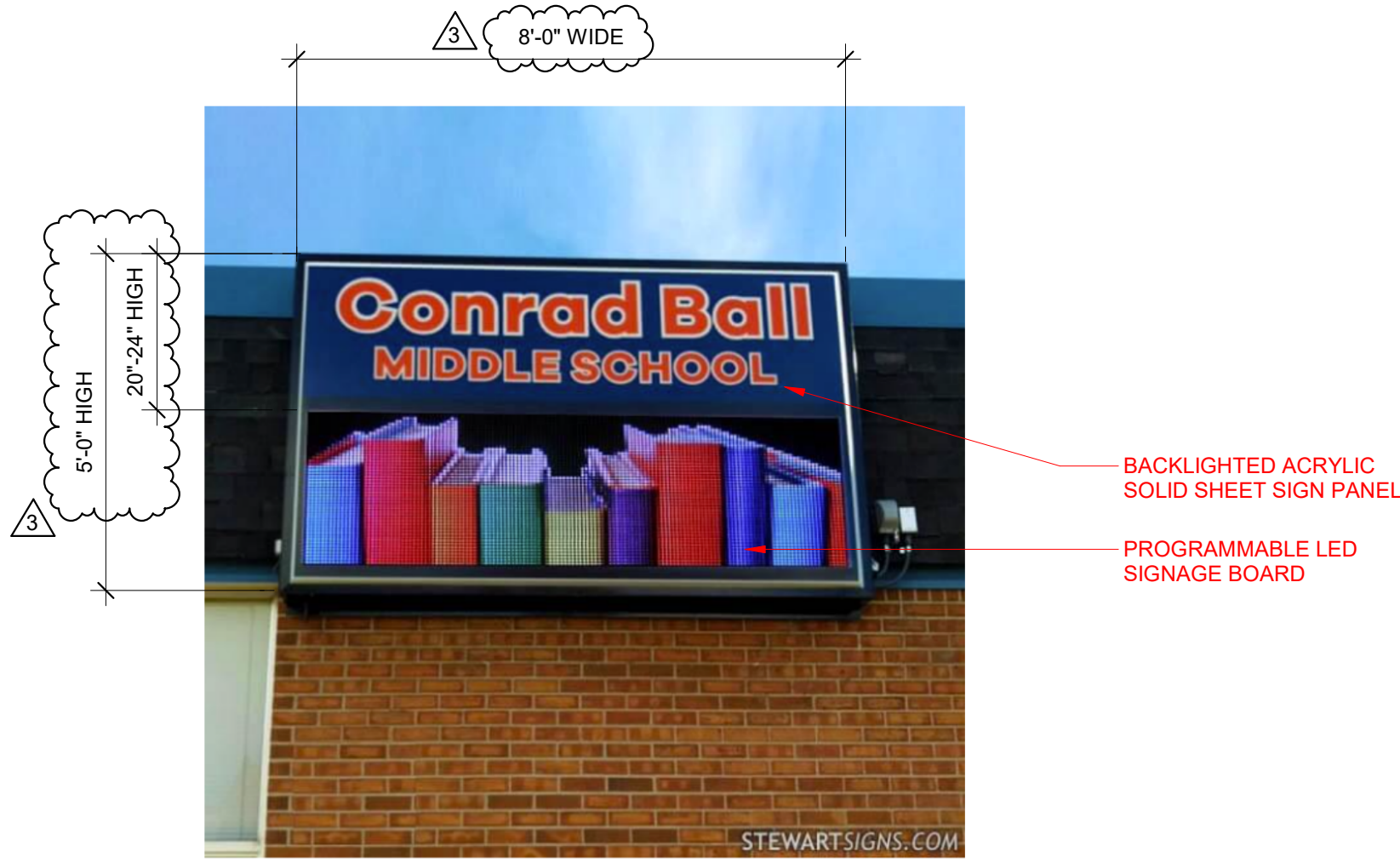
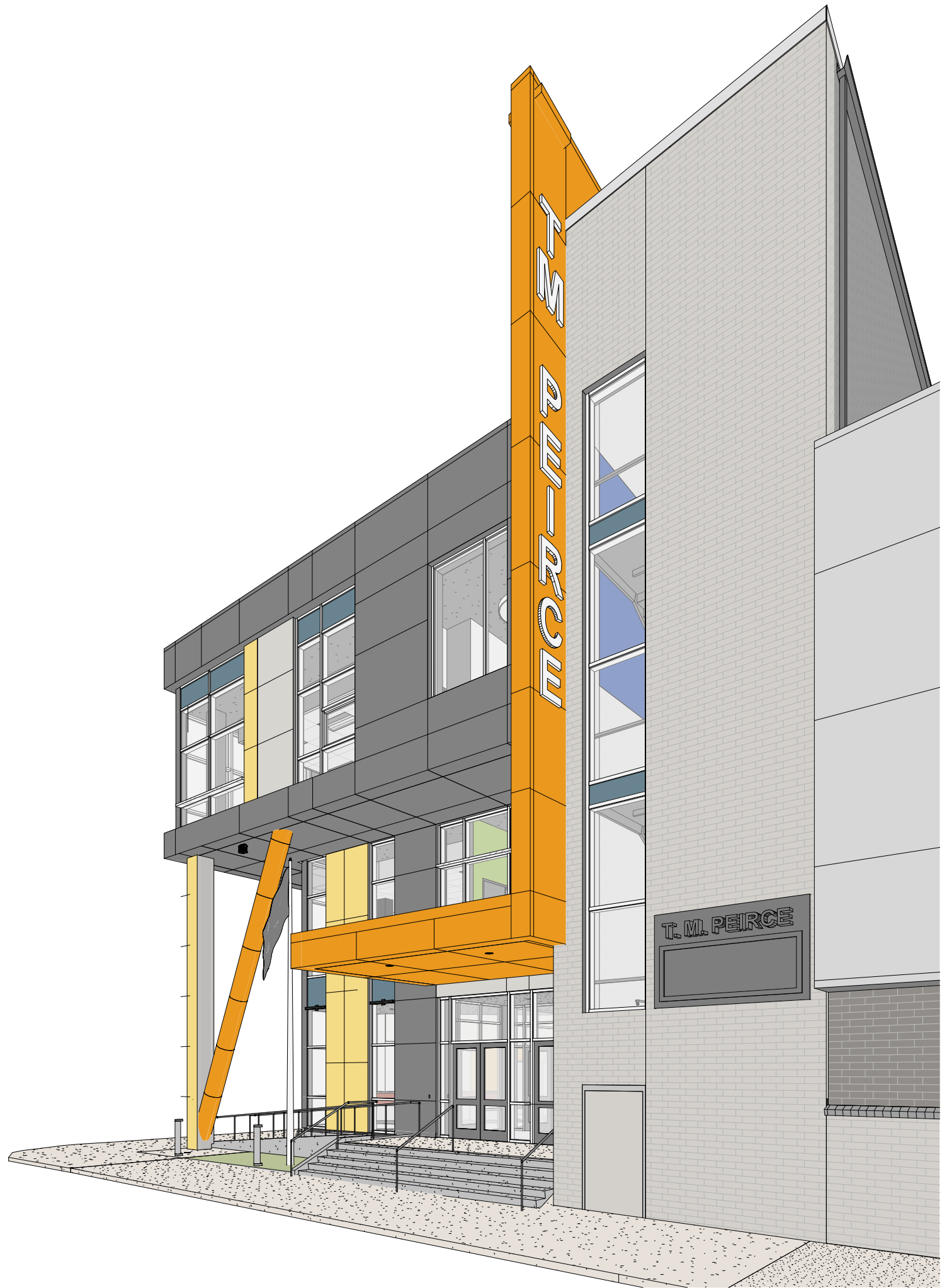
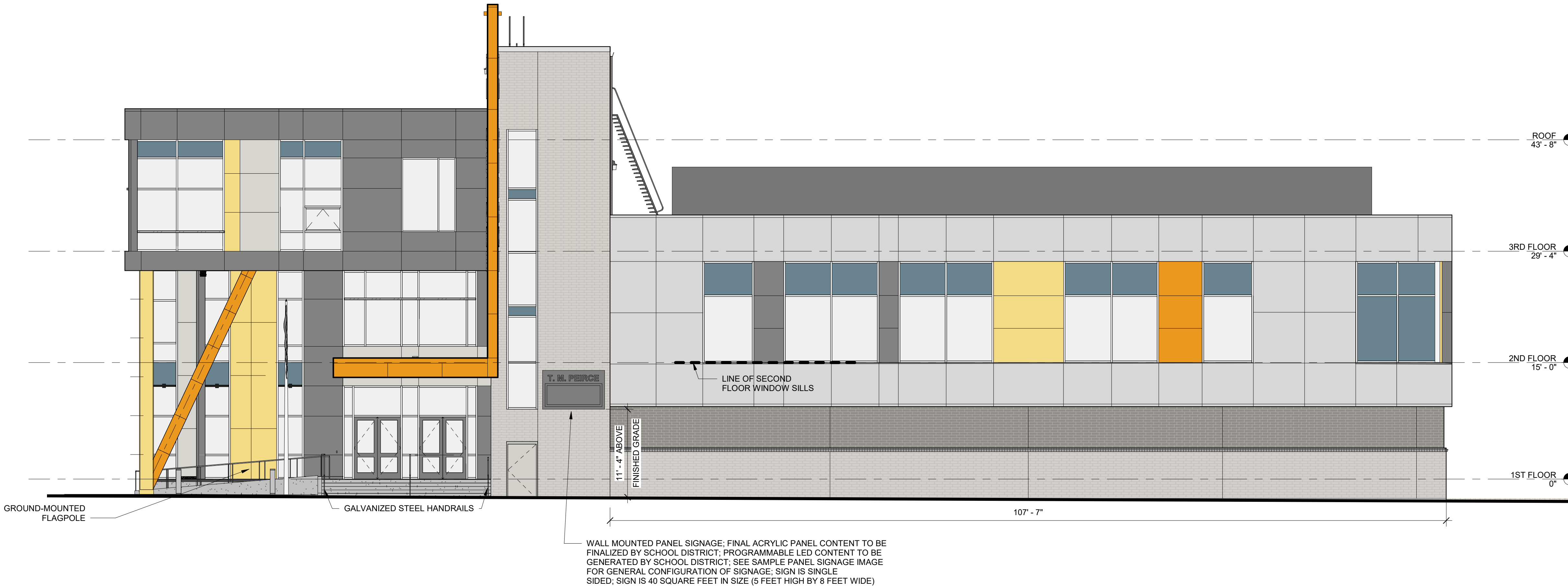


IMAGE OF SAMPLE PANEL SIGNAGE



3D VIEW
12" = 1'-0"



NORTH ELEVATION SIGNAGE
1/8" = 1'-0"

WALL MOUNTED PANEL SIGNAGE; FINAL ACRYLIC PANEL CONTENT TO BE FINALIZED BY SCHOOL DISTRICT; PROGRAMMABLE LED CONTENT TO BE GENERATED BY SCHOOL DISTRICT; SEE SAMPLE PANEL SIGNAGE IMAGE FOR GENERAL CONFIGURATION OF SIGNAGE; SIGN IS SINGLE SIDED; SIGN IS 40 SQUARE FEET IN SIZE (6 FEET HIGH BY 6 FEET WIDE)



phone: 215.829.0922 x###
CONTACT PERSON: PM Name

OWNER
SCHOOL DISTRICT OF PHILADELPHIA
Phone: 215-400-4740
Attn: Nicole Ward, Design Manager

STRUCTURAL ENGINEER

MACINTOSH ENGINEERING
Phone: 484-475-2180
Attn: Steve Krumenacker

M/P/FP/LOW VOLT ENGINEER

SNYDER HOFFMAN ASSOCIATES
Phone: 610-694-8020
Attn: Jeff Machik

ELECTRICAL ENGINEER

DGW ELECTRICAL ENGINEERING
Phone: 215-354-9161
Attn: Grazyna Plichta

CIVIL ENGINEER

KSE
Phone: 215-925-0425
Attn: Sean Marzoff

KITCHEN DESIGNER

NASH DESIGN SERVICES
Phone: 717-484-0133
Attn: Taff S. Nash

Project:

**T.M. Peirce
Elementary School**

Project Address:
2300 W. CAMBRIA STREET
PHILADELPHIA, PA 19132

Sheet Title:

SIGNAGE

Seal

DUTY TO INSPECT CONTRACT DOCUMENTS PRIOR TO STARTING WORK:
Any party who relies in part or whole on the content of these Construction Documents shall, before beginning any work, be responsible for fully inspecting the complete set of Contract Documents, including all Drawings, Specifications, and Addenda, for completeness, conflicts, scope of work, and suitability for constructing the building. All parties relying on these documents represent that they have expertise in the area of their responsibility and are knowledgeable regarding industry standards, product requirements and code requirements and therefore are qualified to fully evaluate and interpret the contract documents. All parties relying on these documents must, prior to beginning work, submit all requests for clarifications and additional information to the Architect in writing. All parties who begin work hereby certify that the documents are suitable for their intended purposes unless noted in specific written exception beforehand.

Warning: Actual conditions may vary from conditions shown on this drawing. Confirm all information in the field before proceeding with any work and notify the Architect in writing if a variation is discovered.

This drawing is not to be copied or transmitted in any form without the express written authorization of Blackney Hayes Architects. All ideas and concepts depicted or suggested in this drawing are the property of Blackney Hayes Architects.

Date	Comments	△
11/14/2022	EXTERIOR SIGNAGE CLARIFICATIONS	1
04/18/2023	EXTERIOR SIGNAGE CLARIFICATIONS	2
06/21/2023	EXTERIOR SIGNAGE CLARIFICATIONS	3

BHA Job Number: 20-038

Scale: As indicated

Drawn By: DN

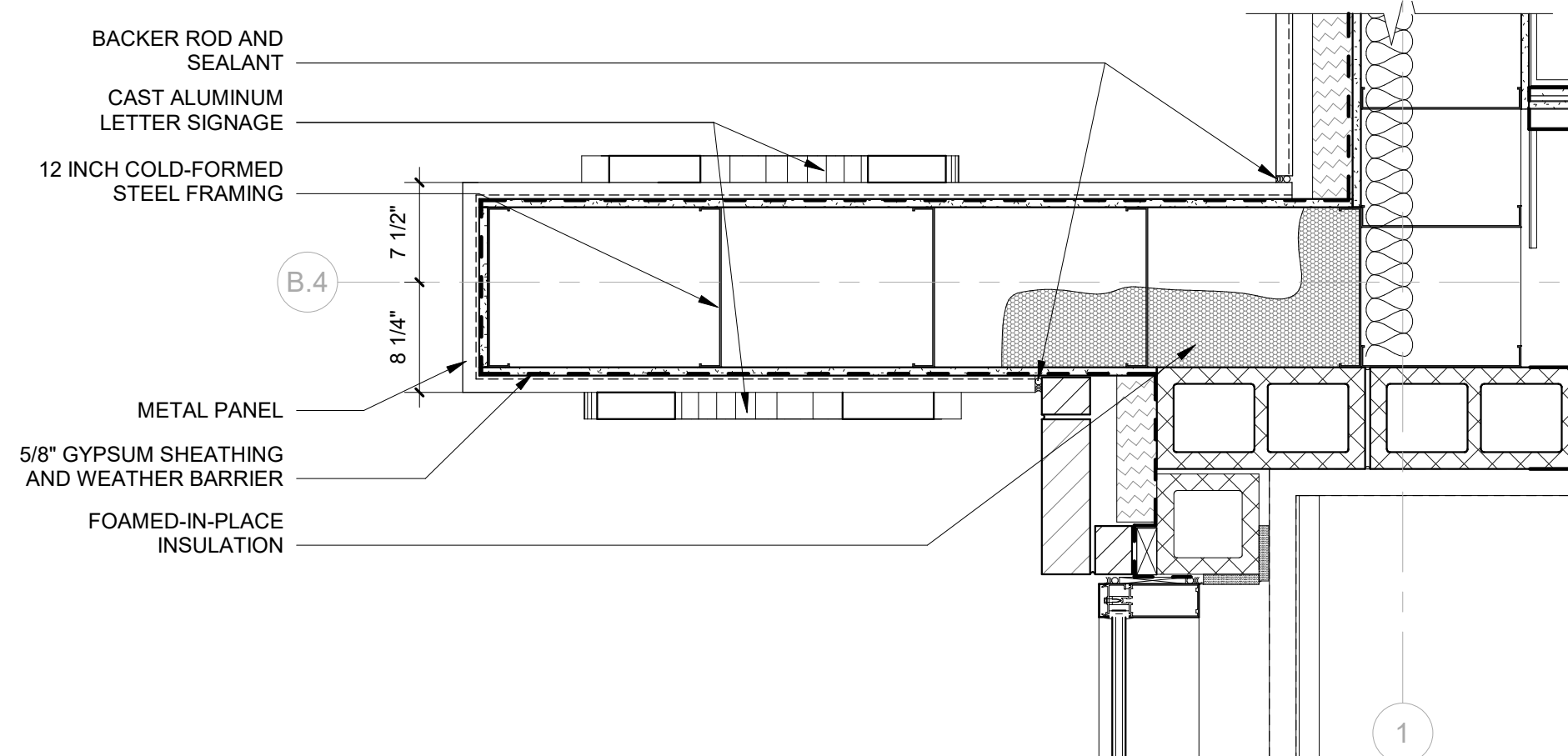
Checked By: PG

Approved By: Approver

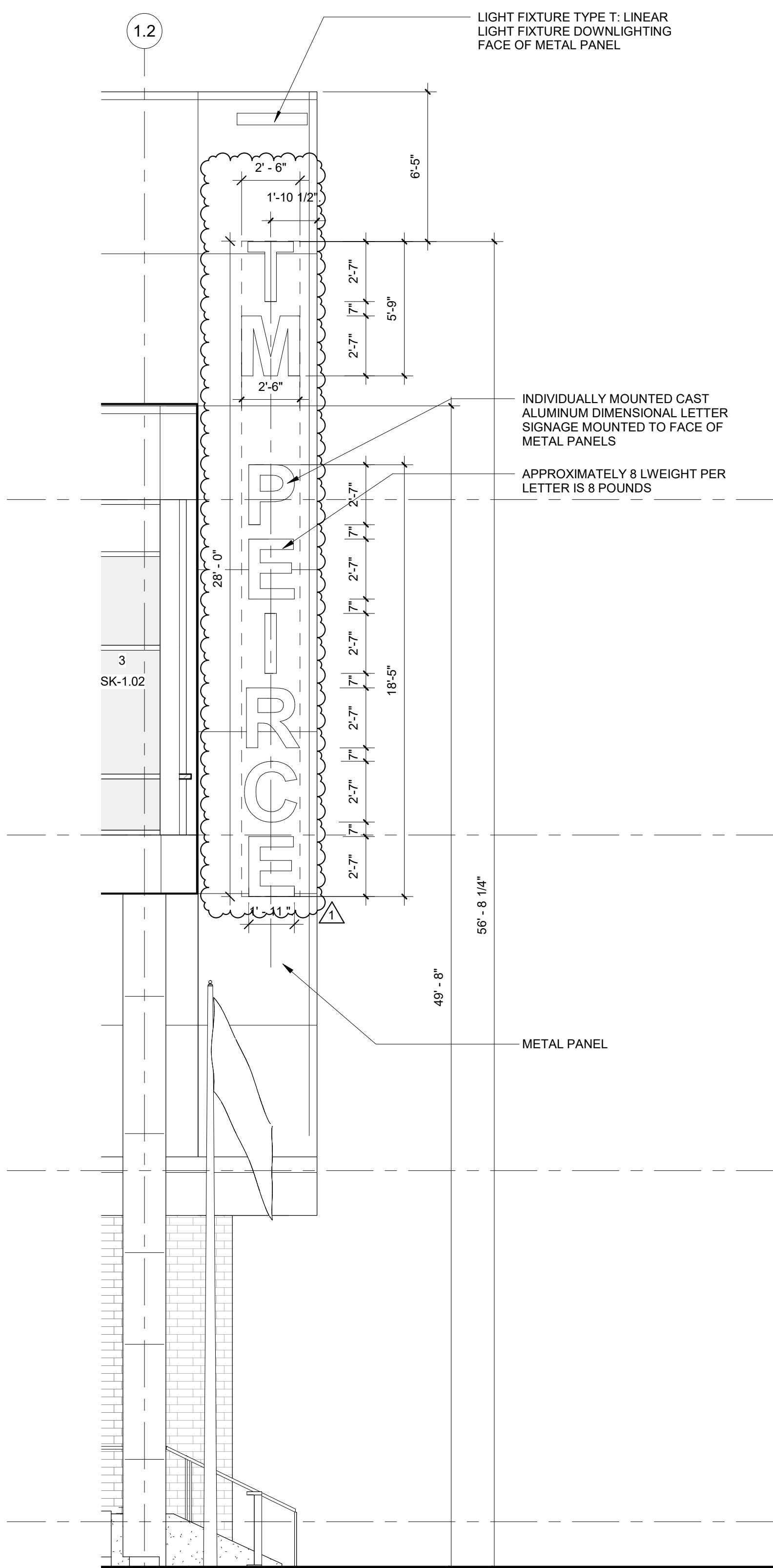
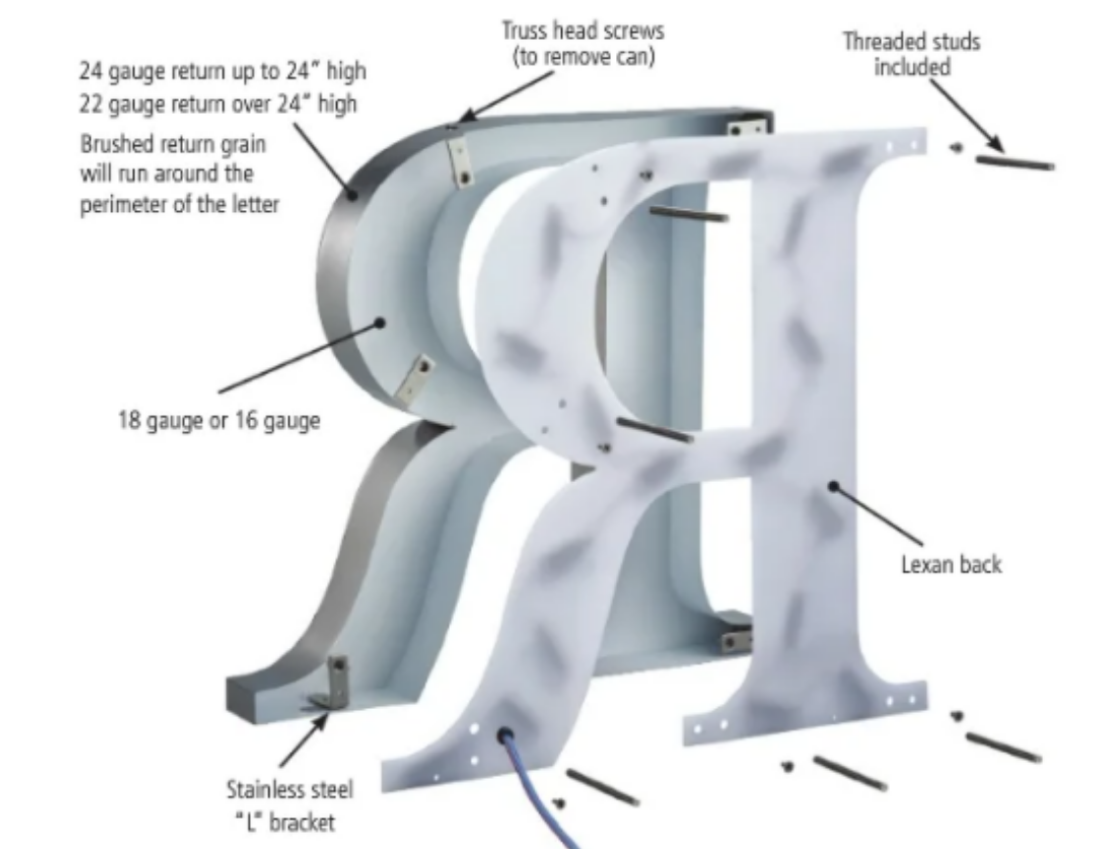
Sheet No.

SG-1.01

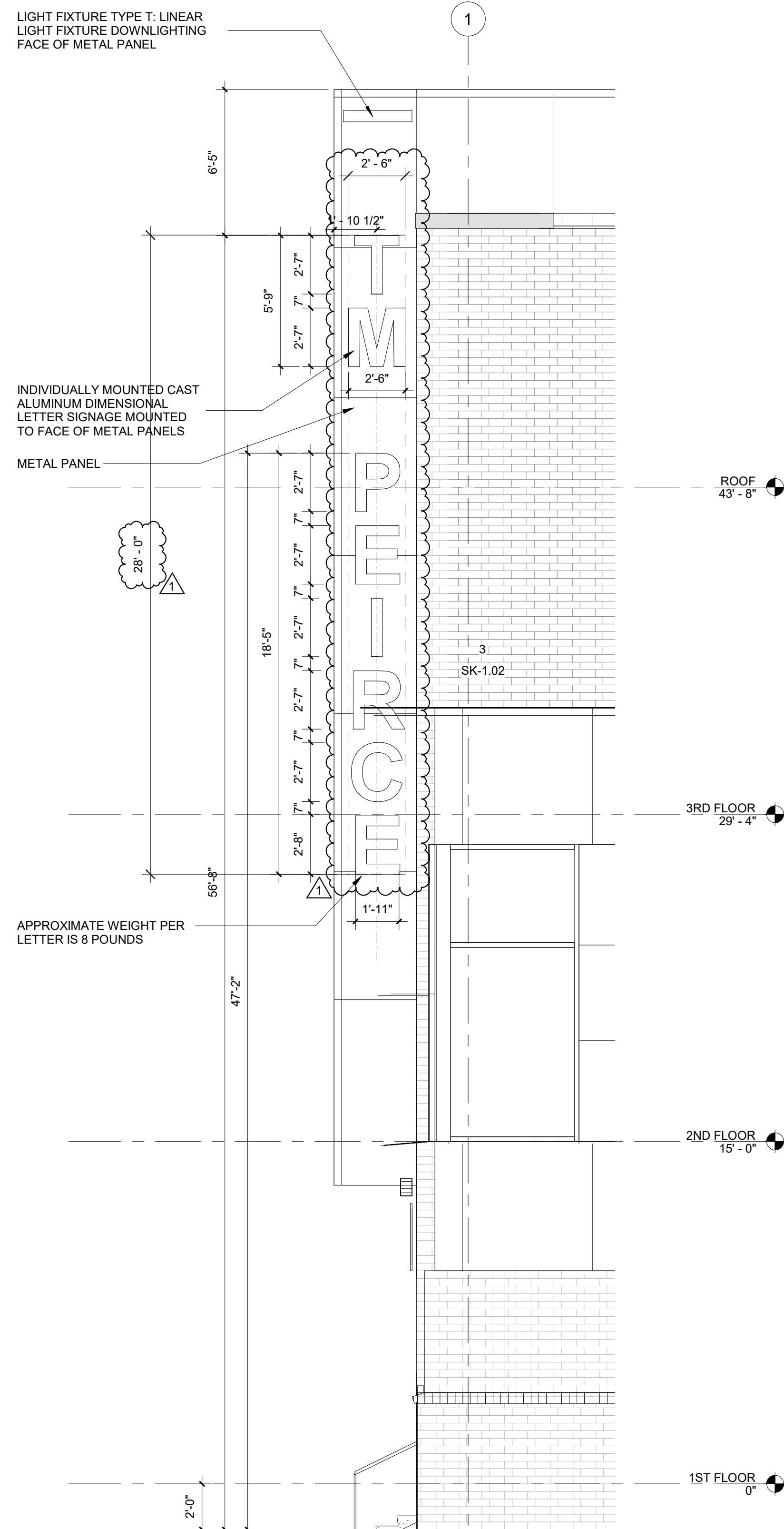
© Copyright 2020 Blackney Hayes Architects



3 PLAN DETAIL @ CAST ALUMINUM LETTER SIGNAGE
1" = 1'-0"



1 EAST ELEVATION - SIGNAGE
1/4" = 1'-0"



② **WEST ELEVATION - SIGNAGE**
1/4" = 1'-0"



phone: 215.829.0922 x####
CONTACT PERSON: PM Name

OWNER
SCHOOL DISTRICT OF PHILADELPHIA
Phone: 215-400-4740
Attn: Nicole Ward, Design Manager

STRUCTURAL ENGINEER

MACINTOSH ENGINEERING

Phone: 484-475-2180
Attn: Steve Krumenacker

M/P/FP/LOW VOLT ENGINEER

SNYDER HOFFMAN ASSOCIATES

Phone: 610-694-8020
Attn: Jeff Meebik

ELECTRIC

ELECTRICAL ENGINEER

DGW ELECTRICAL ENGINEERING

Phone: 215-354-9161
Attn: Grazyna Plichta

CIVIL ENGINEER

KSE

Phone: 215-925-0425
Attn: Sean Marzolf

KITCHEN DESIGNER

NASH DESIGN SERVICES

Phone: 717-484-0133
Attn: Taff S. Nash

Project:

T.M. Peirce
Elementary School

Project Address:
2300 W. CAMBRIA STREET
PHILADELPHIA, PA 19132

Sheet Title:

SIGNAGE

Sea

DUTY TO INSPECT CONTRACT DOCUMENTS PRIOR TO STARTING WORK:

Any party who relies in part or whole on the content of these Construction Documents shall, before beginning any work, be responsible for fully specifying the complete set of Contract Documents, including all Drawings, Specifications, and Addendums, to constitute a complete and consistent set of documents governing the building. All parties relying on these documents represent that they have expertise in the areas of their responsibility and are knowledgeable regarding industry standards, product requirements and code requirements and therefore are qualified to fully evaluate and interpret the contract documents. All parties relying on these documents must, prior to beginning work, obtain all required permits and approvals from the appropriate Architect in writing. All parties who begin work hereby certify that the documents are suitable for their intended purposes as noted in specific written exception beforehand.

Warning: Actual conditions may vary from conditions shown on this drawing. Confirm all information in the field before proceeding with any work and notify the Architect in writing if a variation is discovered.

This drawing is not to be copied or transmitted in any form without the express written authorization of Blackney Hayes Architects. All ideas and concepts depicted or suggested in this drawing are the property of Blackney Hayes Architects.

[illegible]

BHA Job Number: 20-038

Scale: As indicated

Drawn By: DN

Checked By: PG

Approved By: TH

Sheet No.

SG-1.02

© Copyright 2020 Blackney Hayes Architect

NOT FOR CONSTRUCTION



01 - VIEW FROM CORNER OF W. CAMBRIA STREET AND N. CROSKEY STREET



02 - VIEW OF BUILDING ENTRY ALONG W. CAMBRIA STREET



03 - VIEW FROM CORNER OF W. CAMBRIA STREET AND N. CROSKEY STREET



04 - VIEW FROM CORNER OF W. CAMBRIA STREET AND N. 23RD STREET



05 - VIEW OF BUILDING ENTRY ALONG W. CAMBRIA STREET, SHOWING PROPOSED LED SIGN

PROPOSED 5' HIGH BY 8' WIDE LED SIGN

PROGRESS CONSTRUCTION PHOTOS

T.M. Peirce Elementary School

prepared for:
School District of Philadelphia

06/21/23



This drawing is not to be copied or transmitted in any form without the express written authorization of Blackney Hayes Architects. All ideas and concepts depicted or suggested in this drawing are the property of Blackney Hayes Architects.