



Office of  
**Policy and Strategic Initiatives for  
Criminal Justice and Public Safety**  
(CJPS)

Office of  
**Criminal  
Justice**  
(OCJ)

Office of  
**Violence  
Prevention**  
(OVP)

Office of  
**Reentry  
Partnerships**  
(ORP)

Office of  
**Town Watch  
Integrated  
Services**  
(TWIS)

Office of the  
**Victim  
Advocate**  
(OVA)

**38.6%**  
AVERAGE REDUCTION

IN GUN VIOLENCE AFTER GVI  
CONTACT WITH AT-RISK  
GROUPS AND GROUP  
COMBINATIONS



**OUR OFFICE  
CLUSTER SEEKS  
TO CREATE A  
SAFER CITY  
FOR US ALL IN  
PHILADELPHIA**



*“Despite our city’s grave challenges, I am proud of the progress we have made, and I am continually inspired by the courage and resilience Philadelphians have shown, especially in the wake of the pandemic that turned life upside for all of us. As we enter the final year of my Administration, our core priorities are: enhancing public safety; increasing the quality-of-life and building thriving neighborhoods across the city; supporting a strong foundation for Philadelphia youth through historic investments; and driving inclusive growth and economic opportunity to build a thriving economy that benefits everyone.”*  
— Mayor Jim Kenney

# TABLE OF CONTENTS

	Page
Letter from Managing Director of the Office of Policy and Strategic Initiatives for Criminal Justice and Public Safety (CJPS)	03
Cluster Overview of the Office of Policy and Strategic Initiatives for Criminal Justice and Public Safety (CJPS)	06
Roadmap to Safer Communities (The Roadmap) Brief Overview	09
What We Have Accomplished ...	11
Office of Criminal Justice (OCJ)	12
Office of Violence Prevention (OVP)	16
Office of Reentry Partnerships (ORP)	20
Office of Town Watch Integrated Services (TWIS)	24
Office of the Victim Advocate (OVA)	28
Information on 211 Violence Prevention Hotline	32
Community Expansion Grants (CEG) Map	34
Targeted Community Investment Grants (TCIG) Map	36
Micro-Grants Map	37
Navigating the Resource Guide	38
Resources in Central Division: Districts 6 <sup>TH</sup> , 9 <sup>TH</sup> , and 22 <sup>ND</sup>	42
Resources in East Division: Districts 24 <sup>TH</sup> , 25 <sup>TH</sup> , and 26 <sup>TH</sup>	46
Resources in Northeast Division: Districts 2 <sup>ND</sup> , 7 <sup>TH</sup> , 8 <sup>TH</sup> , and 15 <sup>TH</sup>	49
Resources in Northwest Division: Districts 5 <sup>TH</sup> , 14 <sup>TH</sup> , 35 <sup>TH</sup> , and 39 <sup>TH</sup>	51
Resources in Southwest Division: Districts 12 <sup>TH</sup> , 16 <sup>TH</sup> , 18 <sup>TH</sup> , and 19 <sup>TH</sup>	54
Resources in South Division: Districts 1 <sup>ST</sup> , 3 <sup>RD</sup> , and 17 <sup>TH</sup>	58
Index	60





# LETTER FROM DEPUTY MANAGING DIRECTOR, ERICA D. ATWOOD

## To the residents of Philadelphia,

It has been three years since I took the helm of the Office of Policy and Strategic Initiatives for Criminal Justice & Public Safety (CJPS). These have been challenging years for all of us. We have lived through a pandemic, a racial reckoning in our country, and an unprecedented increase in gun violence that has only recently shown signs of abating.

Through all of this, our Office has worked tirelessly to address our City's gun violence crisis at its root, while not losing focus on the need for a fair and equitable justice system. In partnership with leadership from the Philadelphia Police Department and the Philadelphia Department of Public Health, our CJPS Cluster, through the implementation of the Philadelphia Roadmap to Safer Communities, has achieved a great deal to increase the safety and health of our communities throughout Philadelphia.

### What Have We Achieved?

- *Launched our Group Violence Intervention initiative*
- *Expanded our Community Crisis Intervention Program*
- *Created a Rapid Response Protocol*
- *Engaged with thousands of community members through our Community Listening Tour*
- *Founded the Office of the Victim Advocate*
- *Expanded the Intensive Prevention Services program\**
- *Established multiple Community\* Evening Resource Centers\**
- *Funded and supported community organizations engaged in life-saving work all over Philadelphia through violence prevention grant programs, the Targeted Community Investment Grants and the Community Expansion Grants*
- *Expanded thousands of youth safe and positive after-school and summer programming*
- *Improved behavioral health resources and police response for individuals in crisis*
- *Established a City Co-Responder Program in partnership with the City's Behavioral Health Unit*
- *Created a Violence Interruption Collaborative, including Hospital-based Violence Intervention Programs and Violence Interruption Programs, to foster collaboration*
- *Launched a firearm homicide review committee with the Health Department*

## Still More to Do

Despite a 21% decrease in homicides from 2022, gun violence numbers are still higher than pre-pandemic numbers. With all we've accomplished in the last four years, I know our struggle is not over. It will take continued collaboration across all offices within the City of Philadelphia, philanthropic partners, academia, other levels of government, and most of all, our communities to put a stop to the mindless violence that continues to plague our City.

I am grateful to all government agencies and elected officials who have supported me in stewarding this work. The co-chairs of the Roadmap to Safer Communities, led by Dr. Ruth Abaya of the Department of Public Health, Commissioner Danielle Outlaw of the Philadelphia Police Department, and myself, the achievements mentioned above could not have been completed without all of us moving together; sharing, collaborating, and building.

I want to offer a special thank you to Dr. Ruth Abaya, who is concluding her tenure as co-chair; we look forward to her continued contribution to the well-being of communities here in Philadelphia and across the country.

I am eternally grateful to Commissioner Outlaw and Dr. Abaya for your sisterhood, and I am confident that the future will keep our paths aligned.

I also wish to thank our front-line workers and program volunteers, who willingly expose themselves to trauma and hardship on behalf of their neighborhoods and communities. The work you engage in every day is a blessing. I want you to know that we see you and are eternally grateful for your courage and compassion. You might feel like your work is unseen, but you are the shining light. Thank you.

I continue to be inspired by the grantees of our Targeted Community Investment Grant program and our Community Expansion Grant. From the inception of CJPS, I knew that the City could not achieve our goals alone. It would take collaboration and trust with community organizations already doing this work on the ground every day. Our Office created these grant programs to put our money where our mouth was, providing financial support and technical assistance to these organizations and evaluating the process. Rebuilding trust and undoing centuries of divestment from Black and Latino communities will not happen overnight. Yet, I have faith that our partnerships in these grant programs are a step in the right direction.

Please continue to hold us accountable; rightfully, you should expect more from us when it comes to your and your family's safety. We hear you, and we will only continue to expand and fine-tune our efforts to stem the tide of gun violence. I thank you for your continued faith in our work as we continue to move toward a future that is free of violence. I know that together we will get there.

Respectfully,

**ERICA D. ATWOOD**

*Deputy Managing Director*

Office of Policy & Strategic  
Initiatives for Criminal Justice  
and Public Safety (CJPS)

# THE OFFICE OF POLICY & STRATEGIC INITIATIVES FOR CRIMINAL JUSTICE & PUBLIC SAFETY (CJPS) CLUSTER OVERVIEW

## ABOUT US

The City of Philadelphia has realigned its public safety efforts with an enhanced holistic approach. The new Office of Policy and Strategic Initiatives for Criminal Justice and Public Safety strengthens the coordination of the Office of Criminal Justice (OCJ), Office of Violence Prevention (OVP), Office of Reentry Partnerships (ORP), Office of Town Watch Integrated Services (TWIS), and the Office of the Victim Advocate (OVA) into a community-centric dynamic unit. The office focuses on uplifting solutions to reduce violence, enhance the bridge between neighborhoods and City government, as well as amplifies support for returning citizens and families impacted by the criminal justice system, developing and implementing reforms in an equitable fashion informed by the decades of systemic oppression, racism, and poverty that the Kenney Administration is committed towards eradicating.

### OFFICE OF CRIMINAL JUSTICE (OCJ)

This Office advances the administration's public safety and community well-being goals by reforming Philadelphia's criminal and juvenile justice systems.

### OFFICE OF VIOLENCE PREVENTION (OVP)

This Office implements strategies and initiatives to prevent, reduce, and deter violence in Philadelphia, primarily focusing on addressing gun violence.

### OFFICE OF REENTRY PARTNERSHIPS (ORP)

This Office elevates and organizes citywide reentry efforts by serving as the City's hub for referrals, resources, and training.

### TOWN WATCH INTEGRATED SERVICES (TWIS)

This Office trains, organizes, and provides equipment to residents who want to join Town Watch groups in their community. Town Watch volunteers patrol areas and document and report any suspicious or criminal activities.

### OFFICE OF THE VICTIM ADVOCATE (OVA)

This Office works on behalf of victims of violent crime in Philadelphia. The OVA assists victims and their loved ones (co-victims) by assessing their needs, identifying viable short-term and long-term solutions, and connecting them with resources and services.



THE OFFICE OF  
POLICY AND STRATEGIC  
INITIATIVES FOR  
CRIMINAL JUSTICE  
AND PUBLIC SAFETY  
(CJPS) IS FOCUSED ON:

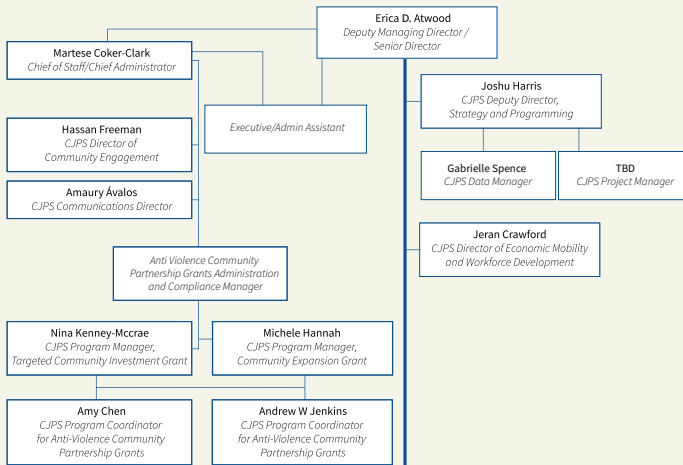




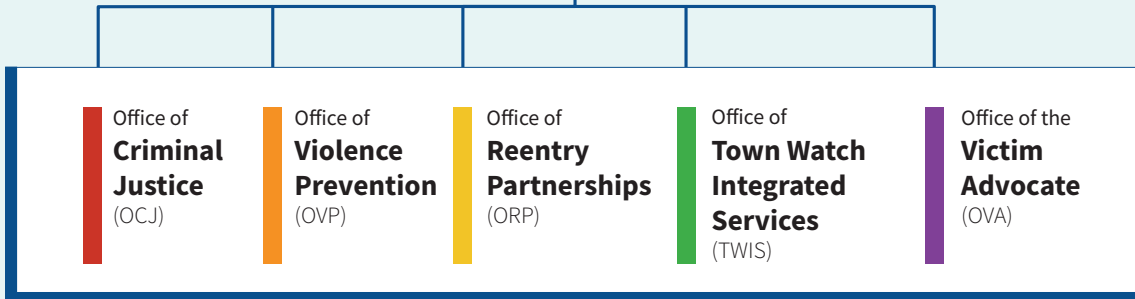
Mayor of the City of Philadelphia

Managing Director's Office

Office of  
**Policy and Strategic Initiatives for  
Criminal Justice and Public Safety**  
(CJPS)



**CJPS Cluster**



- Enhancing the well-being of communities by uplifting solutions to reduce violence.
- Strengthening the bridge between neighborhoods and City government.
- Amplifying support for returning citizens and families impacted by the criminal justice system.

## ABOUT THE DEPUTY MANAGING DIRECTOR OF THE OFFICE OF POLICY & STRATEGIC INITIATIVES FOR CRIMINAL JUSTICE & PUBLIC SAFETY (CJPS)



**ERICA D. ATWOOD**

*Deputy Managing Director*

Office of Policy & Strategic  
Initiatives for Criminal Justice  
and Public Safety (CJPS)

Erica was born in a supportive village in Camden, New Jersey. Her mother and positive black imagery built a foundation of love that fuels the engine that drives how she inspires people and organizations she works with to dream before they lead. Erica lives as she works, approaching her work with the same focus on self-care, problem-solving, coaching, and compassion that she dispenses to friends and family. She aims to help organizations and individuals see how to care for themselves and each other. Erica has over two decades of experience in communications, project management, community outreach, policy-making, and advocacy. She is an experienced public speaker, a trained mediator, and an innovative facilitator.

In 2016, Erica founded First Degree Consulting, LLC, to provide services to local governments, non-profit organizations, academic institutions, and the philanthropic sector, helping clients create more equitable communities. Erica has served as the interim executive director of the Philadelphia Police Advisory Commission, the city's police civilian oversight board. She was the first Office of Black Male Engagement director for the City of Philadelphia. She has also led external affairs and community engagement for the Mayor's Office and was deputy city representative, serving as a protocol officer and overseeing the management of special projects.

As the deputy managing director of policy and strategic initiatives in the Office of Criminal Justice and Public Safety (CJPS), Erica works to help stem the tide of violence in our neighborhoods, strengthen community connections, clear the path to a better life for our family members returning from incarceration, and continue to make sustainable reforms to the criminal justice system.

# PHILADELPHIA ROADMAP TO SAFER COMMUNITIES (THE ROADMAP)

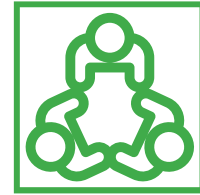
## OVERVIEW

*Coordinates public, private, nonprofit, and community partners to end gun violence. By delivering critical preventions and interventions, we can reduce shootings and gun-related homicide, and achieve its four key goals:*



### CONNECTED & THRIVING YOUTH, YOUNG ADULTS, & FAMILIES

All young people and families have sustainable, well integrated support and can reach their full potential, free from gun violence.



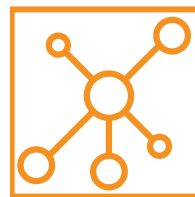
### STRONG COMMUNITY ENGAGEMENT & PARTNERSHIPS

Community organizations are resourced and connected to city agencies, allowing them to maintain and grow person-centered programming that strengthens prevention and intervention efforts.



## THE VISION

Every Philadelphian will be safe from gun violence in their communities, with full access to opportunities to create their path to a fulfilling life.



### COORDINATED CITY SERVICES & PLANNING

Relevant city agencies work collaboratively using police and health data to develop policies and programs, as well as synchronize activities that include community input and will lead to sustainable solutions to prevent gun violence.



### SAFER & HEALTHIER NEIGHBORHOODS

Community organizations are resourced and connected to city agencies, allowing them to maintain and grow person-centered programming that strengthens prevention and intervention efforts.

## THE ROADMAP GOALS COLOR KEY



CONNECTED & THRIVING YOUTH, YOUNG ADULTS, & FAMILIES



COORDINATED CITY SERVICES & PLANNING



STRONG COMMUNITY ENGAGEMENT & PARTNERSHIPS



SAFER & HEALTHIER NEIGHBORHOODS





## WHAT WE HAVE ACCOMPLISHED ...

### 2018 ■

**COMMUNITY CRISIS INTERVENTION PROGRAM (CCIP)** was formed.

### 2019 ■

**PHILADELPHIA ROADMAP FOR SAFER COMMUNITIES (The Roadmap)**

Roadmap created and first report released.

#### JOINT WARRANT INITIATIVE

#### TACTICAL MEETINGS

Established as a way for Police Department (PPD), MDO, other City agencies, and community leaders to collaborate. District captains join meetings, ID challenges their district is facing, and collaborate with community resources to address problems.

### 2020 ■

The Office of Policy and Strategic Initiatives for Criminal Justice and Public Safety (CJPS) was created within the Managing Director's Office (MDO) to bring together the Office of Violence Prevention (OVP), Office of Reentry Partnerships (ORP), Town Watch Integrated Services (TWIS), Office of Criminal Justice (OCJ) and to create then the Office of the Victim Advocate (OVA).

### 2020

#### RAPID RESPONSE PROTOCOL

Creation of CJPS cluster enhances longevity of City solutions to gun violence by establishing networks and collaboration across the City's diverse agencies addressing gun violence.

#### COALITION CREATED

Partnership established between MDO, PPD, & Department of Public Health (DPH).

#### GROUP VIOLENCE INTERVENTION

(GVI) Program launches

### 2021 ■

#### GROUP VIOLENCE INTERVENTION (GVI)

32% of contacted individuals accept supportive services

#### NEXT GENERATION TASKFORCE

Summer Next is Now Events and Youth Leader Networking Events

Engaged young professionals (under 40) who are committed to disrupting the cycle of gun violence to build their social and professional networks.

### 2022 ■ ■ ■

#### COMMUNITY CRISIS INTERVENTION PROGRAM (CCIP)

Expands to 2 new providers Institute for the

Development of African American Youth (IDAAY) and Eddie's House, increasing the program's capacity.

#### MACARTHUR SAFETY & JUSTICE CHALLENGE

Office of Criminal Justice (OCJ) is selected to participate in the MacArthur Safety & Justice Challenge, a grant and technical support program focused on reducing the population of America's prisons and addressing racial injustice in the criminal legal system.

Connecting formerly incarcerated individuals back with their families, while providing support to make sure they make the most of a second chance, restores communities and families.

#### 211 VIOLENCE PREVENTION HOTLINE

City launches 24-hour 2-1-1 Violence Prevention Hotline in partnership with United Way. The hotline uses existing resources through 211 and provides preventative resources to community members worried about gun violence in their communities.

Creating a hotline expands the resources available to community members and their ability to access them.

#### THE ROADMAP COMMUNITY LISTENING TOUR

Throughout 2022 hosted around 30 total community meetings.

Meetings hosted build relationships between community members impacted by gun violence and government and non-profit leaders.

#### OFFICE OF THE VICTIM ADVOCATE (OVA)

OVA is created, with Victim Advocate Adara Combs at the helm. Office is created to support the victims of gun violence and the community advocates in the city healing communities on the ground.

Creation of the OVA supports healing for communities over the long term.

## 2023 WHAT'S AHEAD?

#### CJPS INTERVENTION INITIATIVES LAUNCHING JUNE-SEPTEMBER 2023

Juvenile Assessment Center (JAC)

Pushing Progress Philly (P3)

Neighborhood Resource Center (NRC)



# OFFICE OF CRIMINAL JUSTICE (OCJ)

## ABOUT OCJ

The Office of Criminal Justice was formally founded in 2018 to advance the administration's public safety and community well-being goals by reforming Philadelphia's criminal and juvenile justice systems. Since then, a focus has been on expanding the MacArthur Foundation Safety and Justice Challenge (SJC) reform efforts, sustaining successful initiatives, and supporting policies and initiatives that enhance public safety citywide.

The SJC reform plan includes advancing racial equity in the criminal justice system through collaborative reforms that will safely reduce the local jail population. Since 2015, the prison population was reduced by 46% because of the following system-wide initiatives that have:

- *Identify and break down barriers to racial equity.*
- *Reduced the number of people incarcerated pretrial.*
- *Created efficiencies in case processing that reduced the length of stay.*
- *Reduced the number of people held in jail on a probation detainer.*

- *Reduce racial and ethnic disparities across the criminal justice system.*
- *Reduce the number of people in jail with mental illness.*
- *Increase cross-system data capacity.*
- *Foster meaningful community engagement and partnerships.*

OCJ also supports the following initiatives:

- *Police-Assisted Diversion (PAD)*  
[www.phillypolice.com/programs-services/pad](http://www.phillypolice.com/programs-services/pad)
- *911 Triage and Responder Strategy*
- *Youth Arrest Reform Project (and Juvenile Assessment Center)*
- *MacArthur Foundation Safety and Justice Challenge*
- *Jail Population Management*
- *Criminal Justice Advisory Board (CJAB)*

For more information, please see the monthly dashboards demonstrating these changes over time by scanning QR-Code below.



**THE OFFICE OF CRIMINAL JUSTICE  
WORKS WITH SYSTEM PARTNERS  
CITY WIDE TO DEVELOP INNOVATIVE  
SOLUTIONS, REFORM, AND POLICIES  
THAT ENHANCE QUALITY-OF-LIFE,  
PROMOTE RACIAL EQUITY AND  
ENHANCE PUBLIC SAFETY.**

## ABOUT THE EXECUTIVE DIRECTOR OF OFFICE OF CRIMINAL JUSTICE (OCJ)



**KURT AUGUST**

*Executive Director*

**OFFICE OF  
CRIMINAL JUSTICE (OCJ)**

Kurt received his BA & MSW from the University of Pennsylvania. He has served as a panelist at behavioral health, public health, and law enforcement conferences and regularly hosts other jurisdictions from around the country interested in learning more about the planning, implementation, and growth of the diversion & deflection process in the City of Philadelphia.

Before his current position, Kurt served as the Deputy Director of Diversion and Deflection in the Office of Criminal Justice (OCJ), the Program Manager for Police-Assisted Diversion, the Coordinator of Reentry Services in the City of Philadelphia's District Attorney's Office, the Lead Counselor for formerly incarcerated individuals at the Community College of Philadelphia, and the Direct Services Coordinator for a hunger relief organization known as Philabundance. His given track record gives him a wide-angle view of seeking to make a positive impact within our justice system as OCJ's Director.

Kurt's work involves overseeing a range of criminal justice reform efforts designed to safely reduce the size of the local jail population and promote racial equity across the criminal justice system. Some of this work includes the piloting of a pre-booking diversion program, an Outreach focused Co-Responder pilot which embeds behavioral health professionals with law enforcement to collaboratively address quality-of-life issues in the Kensington/Harrowgate section of the City, and a Triage Desk/Co-Responder model that pairs behavioral health professionals with CIT Officers in unmarked police vehicles to address behavioral health calls that come into the 911 Call Center in real-time.

# 46%

*(Reduction in Jail Population as of 2023)*

*In partnership with all the Criminal Justice stakeholders that are a part of the Safety and Justice Challenge (SJC), through our collaborative efforts we have safely reduced the jail population since the beginning of the SJC in 2015.*

# 1,388

*(Referrals in 2022)*

*In Police-Assisted Diversion (PAD) these referrals led to tangible service connections in 2/3 of the cases with over 135 direct placements in out of county treatment facilities. From the point of diversion to PAD, the re-arrest rate for PAD participants was only 8.5%.*

# OFFICE OF CRIMINAL JUSTICE (OCJ)

Some of the key policy initiatives in the office include Police Assisted Diversion (PAD), an initiative designed to divert low-level, non-violent, drug, prostitution, and retail theft offenses away from the criminal justice system and towards supportive, customized peer-based social services, PAD started as a sustained pilot program by the City and has expanded to citywide implementation as of early 2023. In the spring of 2021, The City began its pilot of the Crisis Intervention Response Team program, consisting of four co-responder teams that can serve as first responders for people in behavioral health crises on a single shift. The CIRT units are composed of CIT-trained police officers and mental health professionals contracted by DBHIDS that jointly respond to calls identified by Police radio or patrol cars. Based on the success of this pilot, there are also plans for expansion in the near future. 911 Triage work is also a significant part of identifying people experiencing crises for which a police-only response might not be appropriate. Philadelphia Criminal Justice Advisory Board (CJAB) supports all this work. It comprises justice partners across the City, including The First Judicial District of

Pennsylvania, the Philadelphia District Attorney's Office, the Defender Association of Philadelphia, the Philadelphia Police Department, the Philadelphia Department of Behavioral Health, the Philadelphia Department of Prisons, Philadelphia City Council. OCJ chairs several CJAB committees and plays an active role, as collaboration with CJAB stakeholders is critical to our success.

The juvenile Justice focused police aim to reform the youth arrest process by implementing a Juvenile Assessment Center model, which would centralize juvenile processing to create efficiencies and embed youth support partners (who specialize in trauma-informed care and youth development) into this location so that they can work with the youth and their families at the point of arrest to offer a wide variety of supports and resources at that critical moment of intervention, in addition to creating efficiencies across the system. The office also has a juvenile racial equity strategist focusing on training and policy recommendations to reduce racial-ethnic disparities in the juvenile justice system.



**COLLABORATION &  
ENGAGEMENT**



**INNOVATION**

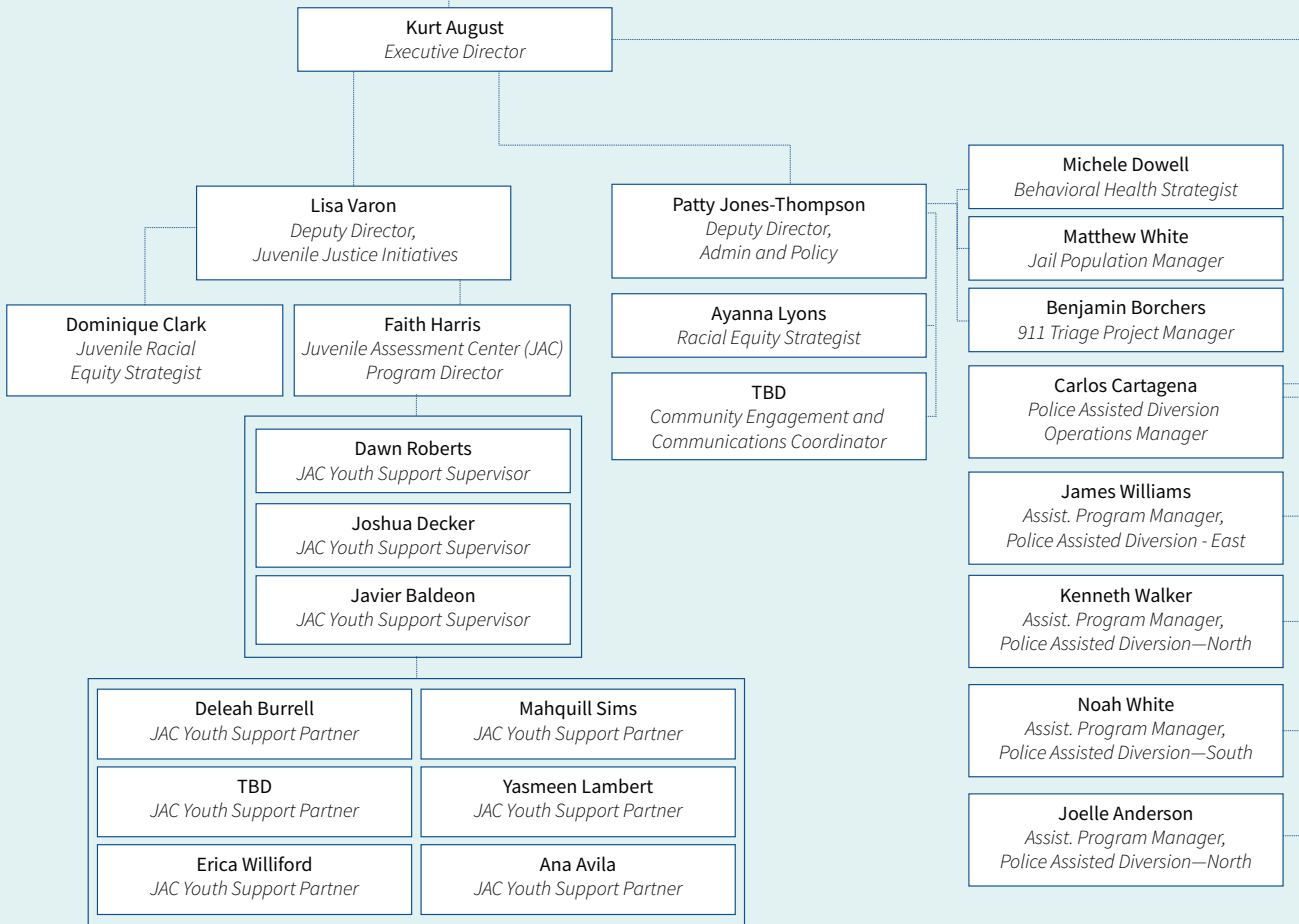


**SOLUTION  
FOCUSED POLICY**





Office of  
**Criminal Justice** (OCJ)



**1401 JOHN F. KENNEDY BLVD., SUITE 1430  
PHILADELPHIA, PA 19102**



**OFFICE NUMBER:  
(215) 686-3603**



**EMAIL:  
KURTIS.AUGUST@PHILA.GOV**

# OFFICE OF VIOLENCE PREVENTION (OVP)

## ABOUT OVP

On July 18, 2017, Mayor Jim Kenney formally announced the creation of the City's first Office of Violence Prevention (OVP), which works to help reduce, prevent, and combat violence here in Philadelphia, primarily focusing on gun violence. He appointed Shondell Revell as the Office's Executive Director (ED), who still serves diligently in that role today. By strengthening and mobilizing community support through various community outreach initiatives, OVP creates effective prevention policies and programs citywide through effective relational capacity building and coordination with multiple stakeholders. Those stakeholders also include the rest of the Office of Policy and Strategic Initiatives for Criminal Justice and Public Safety (CJPS) cluster (which consists of the Office of Criminal Justice (OCJ), Town Watch Integrated Services (TWIS), Office of Reentry Partnerships (ORP), and the Office of the Victim Advocate (OVA)), other anti-violence organizations, City, state, federal agencies, and community members, particularly at-risk, vulnerable populations.

Working in close partnership with the community, state, and city agencies, including our local police departments, OVP works to create effective prevention policies and programs citywide while increasing awareness about what works and building on the strengths in communities to promote a culture of nonviolence.

Some of OVP's programs include the Community Crisis Intervention Program (CCIP), Group Violence Intervention Program (GVI), Violence Prevention Partnership (VPP), Rapid Response Team, Tactical Meetings (which is internal coordinated city services in support of PPD), and Targeted Community Investment Grants (TCIG), which OVP supports but it is now under CJPS.

**PHOTO CREDIT:** DaVonti' Haynes | In this photo from left to right: DeAngelo Harris-Rosa, Deputy Director of OVP, Sgt. Dawn Thomas, 39th District, students from High Schools participating in "The Group Chat: A Safe Philadelphia," in collaboration between Temple University, PHL Youth Commission, Mayor's Office of Youth Engagement, and the Mayor's Office of Public Engagement



**"Over the past decade, there have been a host of efforts to stem violence in Philadelphia. While we've had some success, I believe the City would benefit from a coordinated, interdepartmental approach,"** said Mayor Kenney.

# ABOUT THE EXECUTIVE DIRECTOR OF OFFICE OF VIOLENCE PREVENTION (OVP)

## SHONDELL REVELL

Executive Director

### OFFICE OF VIOLENCE PREVENTION (OVP)

Raised in a single-mother household, Shondell has grown to understand the meaning and the importance of family and community throughout his life. Majoring in Crime and Justice, Shondell received his undergraduate degree from West Virginia University in 1992. He later went on to earn a Master of Science in Organizational Leadership from Wilmington University and is currently finishing his Ph.D. in Leadership from Alvernia University.

Shondell has found his calling in addressing the daily senseless violence that underserved communities face. With a people-first mentality and a social work/social services background, Shondell Revell has dedicated his life to servicing Philadelphia's youth, young adults, and poverty-stricken families. For ten years, Shondell served as the Executive Director of the Youth Violence Reduction Partnership (YVRP) for the City of Philadelphia. YVRP is a youth homicide-reducing initiative that intensively supports young people ages 15 to 25.

Today, as Philadelphia's first Executive Director for the Mayor's Office of Violence Prevention, Shondell oversees and coordinates the City's investments in anti-violence programs across multiple departments. Shondell is a proud father of three beautiful daughters. He openly admits that one driving factor of his passion for social work and violence prevention is changing the culture to make the world better for his children and future generations. He continues strengthening his foundation by mastering each professional position through education and surpassing the standards.



*"I created the Crisis Community Intervention Program, giving people a voice going into the communities in those types of hours dealing with those issues day to day issues that arise when people aren't normally out there. The violence doesn't stop from Friday to Sunday, so you have to think outside the box." —S. Revell*

# 3

**OVP helped fund three of the city's largest community-based Anti-Violence organizations, including PAAN, Eddie's House, and IDAAY.**

# OFFICE OF VIOLENCE PREVENTION (OVP)

OVP is committed to creating communities that promote safety and positive outcomes for every resident. We understand how exposure to gun violence can impact families and how it contributes to a cycle of trauma within our community. By taking a public health approach, we will continue to address the factors that promote violence by working together to empower and strengthen our communities. The OVP organizational structure has grown from a staff of three to a team of twenty-two. (Updated as of June 2023).

The programs listed below are a public health approach to violence prevention in our Office of Violence Prevention under the Office of Policy and Strategic Initiatives for Criminal Justice and Public Safety (CJPS) cluster:

- *Community Crisis Intervention Program (CCIP)*
- *Targeted Community Investment Grant (TCIG)*
- *Violence Partnership Program (VPP)*
- *Tactical Program (For The Roadmap)*
- *Rapid Response*



**COLLABORATIVE**



**DATA & RESEARCH**



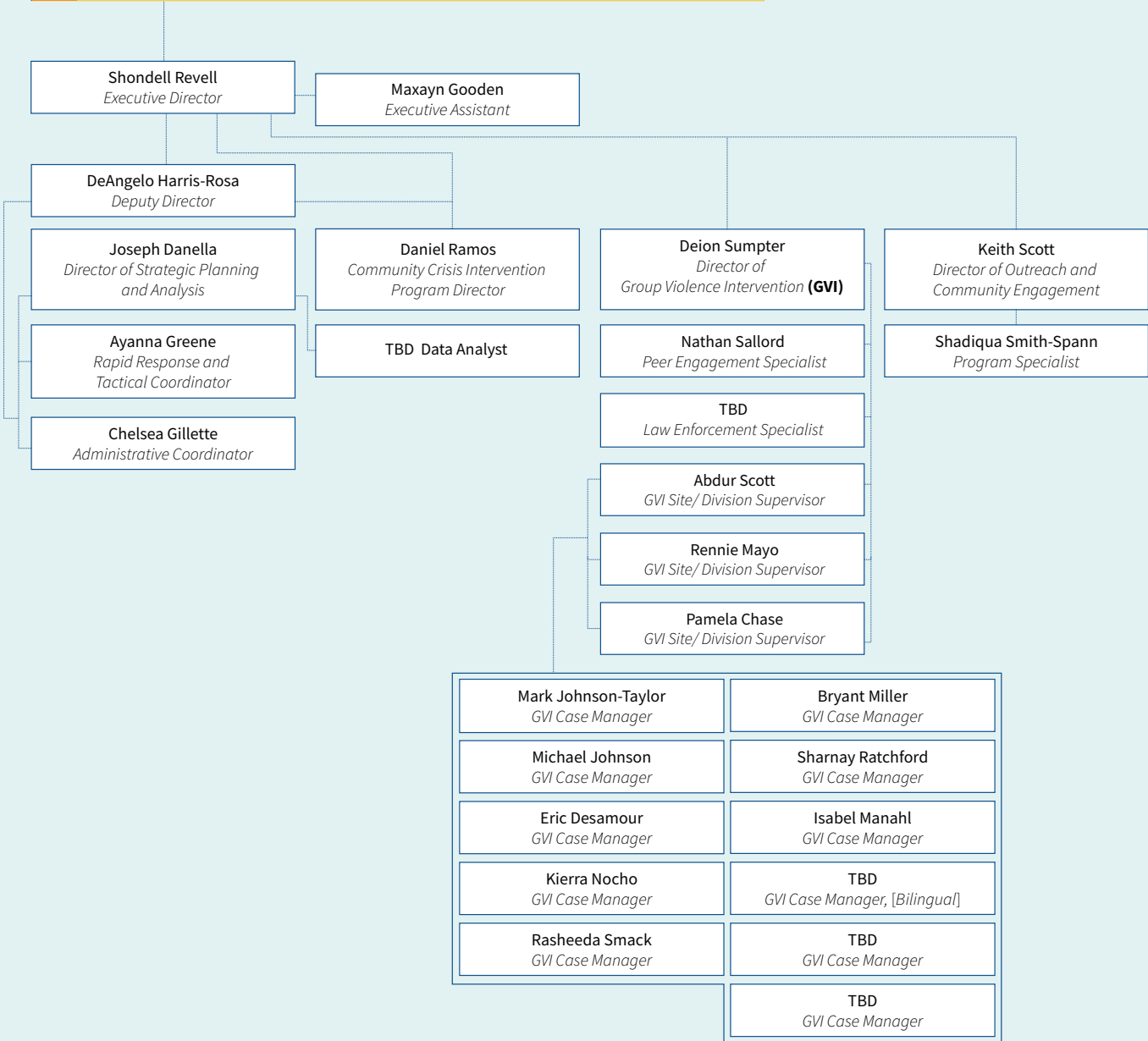
**INVESTMENT OPPORTUNITIES**



**STRENGTHENING COMMUNITIES**



# Office of Violence Prevention (OVP)



1425 ARCH ST. 4<sup>TH</sup> FLOOR  
PHILADELPHIA, PA 19102



OFFICE NUMBER:  
(215) 686-0789



EMAIL:  
OVPINFO@PHILA.GOV

# OFFICE OF REENTRY PARTNERSHIPS (ORP)

## ABOUT ORP

The first iteration of the City's reentry office was launched in 2005, called "MORE," the Mayor's Office for the Reentry of Ex-Offenders. In 2010, that name was changed to RISE, the Mayor's Office of Reintegration Services (RISE). Initially, RISE offered reentry services to Philadelphians returning from county, state, and/or federal institutions.

Some of the programming offered by RISE included life skills, job readiness training, computer literacy, and GED classes. RISE also provided vocational training and job-placement services to its participants

RISE also conducted pre-release life-skills classes and an initiative that assisted the Philadelphia Department of Prisons (PDP's) Seriously Mentally Ill (SMI) population with setting up their medical benefits so there would be no interruption in benefits upon release.

Other programs that were offered/sponsored by RISE were:

- *The Fatherhood Enrichment Program (FEP)*  
FEP classes included anger management and parenting. FEP had a PDP pre-release component, also.
- *The Reentry Second Chance (R2C) Program* was a 3-year grant-funded program. Participants were selected while at PDP. They received post-release reentry services that included case management.
- *Additionally, the Office of Criminal Justice's (OCJ) Philadelphia Reentry Coalition (PRC),* which now has a membership of approximately 140 agencies, and "Root Causes," an OCJ grant-funded program that has since ended, became the responsibility of the Office of Reentry Partnerships (ORP).

The Office of Reentry Partnerships (ORP) was formed in August 2019 and charged with elevating and organizing citywide reentry efforts and supporting the Kenney administration's goals for violence prevention, criminal justice reform, and community reinvestment.

*We've successfully supported a number of formerly incarcerated persons with transition. Some of the following are worthy of highlighting:*



# 72

*Assisted to obtain their municipal identification*



# 56

*Successfully completed our forklift training certification program*

**"IMPROVING PRE-RELEASE AND REENTRY PROGRAMS DOESN'T JUST HELP FORMERLY INCARCERATED PERSONS; IT ALSO SUPPORTS OUR COMMUNITIES AS A WHOLE."**

# ABOUT THE EXECUTIVE DIRECTOR OF OFFICE OF REENTRY PARTNERSHIPS (ORP)

As Executive Director of ORP, Assata sets a clear vision and direction for a comprehensive citywide approach to improving reentry outcomes, including developing partnerships to create a citywide network of services that address a variety of social services needs among individuals returning from incarceration to reduce recidivism.

Prior to her current role, she served as Chief Community Justice Officer of the Institute for Community Justice (ICJ), a Program of Philadelphia FIGHT. As Chief, she oversaw the effective execution of ICJ's aims to provide support, education, and advocacy for individuals, families, and communities impacted by mass incarceration.

With over 20+ years of social service experience, Assata commenced her training as a Corrections Officer with the State of New Jersey and became the first female President of the Corrections Officers Training Academy of New Jersey. Concurrently, she received a B.A. with honors from Rutgers University in Africana and Urban Studies and a Masters of Restorative Justice from Vermont Law and Graduate School.

Assata is committed to social justice and building a society emancipated from the socially inequitable, calloused, and destructive system of mass incarceration. In this society, even the most vulnerable communities have equal and unrestricted access to healthcare, justice, and unqualified safety and security protection.

She is a passionate advocate on behalf of those affected by mass incarceration; moreover, having lived through the experience of a felony conviction, she is uniquely qualified to speak with credibility and authority to the issues facing all who have been affected by the system – such as the challenges faced by returning citizens for a fair chance at social rehabilitation, healthy reintegration back into society and the chance to (re) design their futures and destinies. Her personal trajectory and hard-won successes fuel her passion for helping others, and they offer a concrete and inspiring example for others that, despite the odds, success is possible.

## ASSATA THOMAS

*Executive Director*

**OFFICE OF REENTRY PARTNERSHIPS (ORP)**

**PLSE**

**PHILADELPHIA  
LAWYERS for  
SOCIAL EQUITY**

*We've partnered with Philadelphia Lawyers for Social Equity (PLSE) at different intervals throughout where 451 individuals in applying for expungements.*

**1100+**

*Individuals released from the Philadelphia Department of Prisons were provided with a \$500 payment during COVID to support their reentry*

# OFFICE OF REENTRY PARTNERSHIPS (ORP)

The Office of Reentry Partnerships (ORP) is also a part of the Office of Policy and Strategic Initiatives for Criminal Justice and Public Safety (CJPS) cluster in the Managing Director's Office. ORP's mission is to empower returning citizens, partner organizations, and the public to interrupt cycles of recidivism and build thriving communities.

As Philadelphia's hub for reentry referrals, resources, and training, the goals of the Office of Reentry Partnerships are to:

- *Set a clear vision and direction for a measurable citywide approach to improving reentry outcomes*
- *Drive and sustain an unprecedented level of coordination between the local government, other government partners, service providers, education and training programs, employers, and community members*
- *Ensure that City reentry initiatives are research- and data-driven.*



**EMPOWERMENT**



**OPPORTUNITIES**

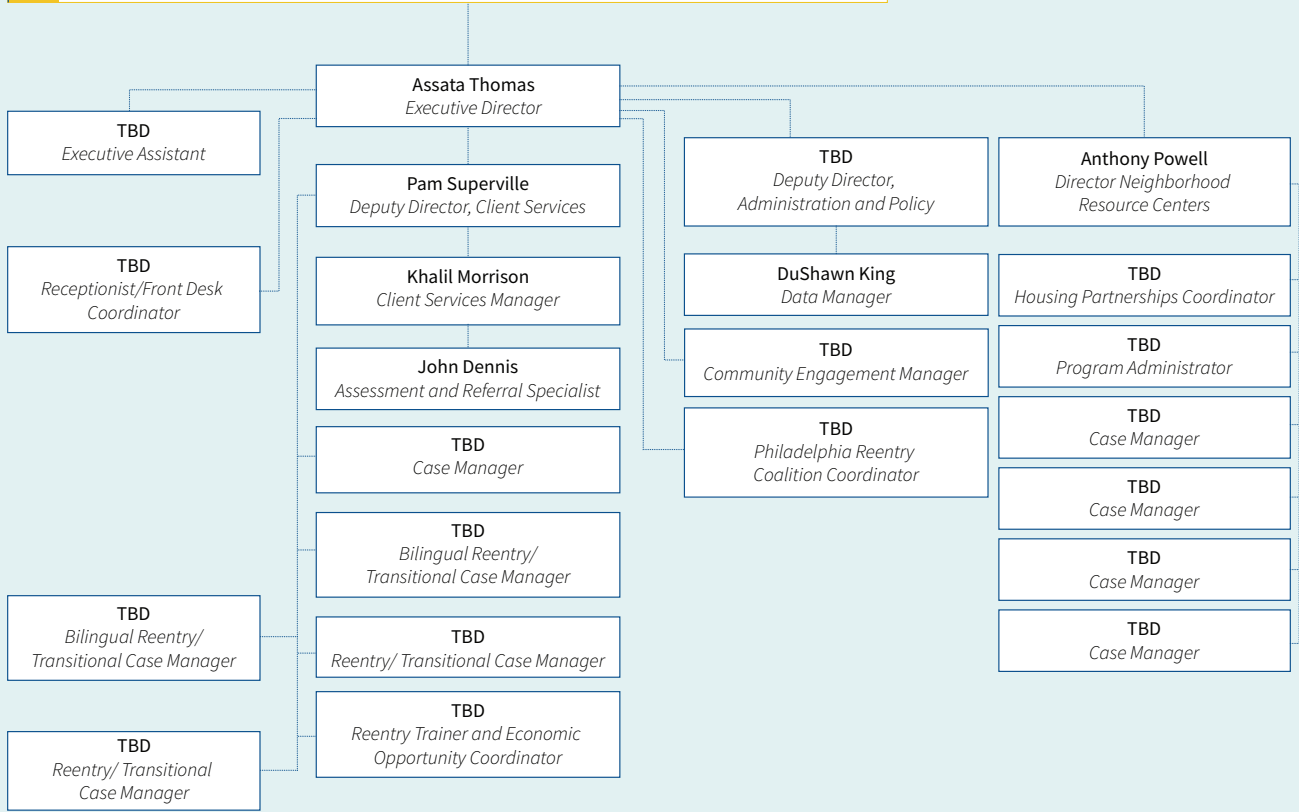


**REDUCE  
RECIDIVISM**





# Office of Reentry Partnerships (ORP)



**1425 ARCH STREET 1<sup>ST</sup> FLOOR  
PHILADELPHIA, PA 19107**



**OFFICE NUMBER:  
(215) 683-3370**



**EMAIL:  
ORP@PHILA.GOV**

**WALK IN HOURS:  
MONDAY THROUGH FRIDAY  
9 AM TO 5 PM**

# OFFICE OF TOWN WATCH INTEGRATED SERVICES (TWIS)

## ABOUT TWIS

On July 1, 1995, the City of Philadelphia established Philadelphia Operation Town Watch under the leadership of Anthony Murphy. He and two staff persons began the process of training and certifying the 300-plus existing town watch groups in the City.

Operation Town Watch developed standardized training for its member organizations to ensure their preparedness to address crime prevention and citizen patrols. Town Watch membership has grown to 720 certified member organizations and over 20,000 trained members. Town Watch currently has six Trainers/Recruiters to address the various needs of the groups. Town Watch takes many forms; patrolling, block watch, in-house town watch, etc. The service is unique to each community.

Town Watch's role has broadened to address violence intervention/prevention issues. The most basic level of involvement is the need to engage citizens on the streets of their neighborhoods. Enhanced participation is critical in helping people address their quality-of-life issues.

The recruiting and training of Town Watch groups are combined with empowerment efforts and support to create what is called Town Watch Integrated Services (TWIS).

Town Watch Integrated Services is a holistic approach to promoting neighborhood safety through crime prevention, intervention, capacity building, enhanced service delivery, and referral. This is accomplished by developing town watch groups, providing neighborhood and school intervention services, developing viable community partnerships, working with partners to improve public service delivery, and making referrals to resources in our communities.



**1515 ARCH STREET 11<sup>TH</sup> FLOOR  
PHILADELPHIA, PA 19107**



**OFFICE NUMBER:  
(215) 686-1459**



**EMAIL:  
ANTHONY.MURPHY@PHILA.GOV**

Town Watch Integrated Services (TWIS) dedicates to assisting residents with their quality-of-life issues through community policing and participation.

Working together to make positive neighborhood change is the crux of our mission. Town Watch groups have historically built partnerships with district police to be their "Eyes and Ears," assisting in crime prevention and reporting. Recently, a community support component has been added to bridge the gap between crime prevention and community accountability. Through the facilitation of discussion and planning about the entire range of community issues, trained staff has been added and deployed into neighborhoods based on the need to identify and work with the local leaders. Our role is to help people prioritize and implement strategies to address the things that affect their day-to-day concerns, such as safe neighborhoods and schools, adequate or improved city services, and quality referrals to local resources.

Organized blocks are strong and the basis for healthy neighborhoods. People talking to each other, working together, and caring for each other is the only way things get done. TWIS promotes participation and safety through community policing, violence intervention, and neighborhood capacity building.

The overall responsibility of Town Watch groups is to Observe, Document, and Report. Community Support staff assist in identifying, prioritizing, and implementing community objectives and developing action plans to facilitate change.

**TOWN WATCH  
INTEGRATED SERVICES  
(TWIS) IS DEDICATED TO  
ASSISTING RESIDENTS  
WITH THEIR QUALITY-OF-  
LIFE ISSUES THROUGH  
COMMUNITY POLICING  
AND PARTICIPATION.**

# ABOUT THE EXECUTIVE DIRECTOR OF OFFICE OF TOWN WATCH INTEGRATED SERVICES (TWIS)



**ANTHONY MURPHY**

*Executive Director*

**OFFICE OF TOWN WATCH INTEGRATED SERVICES (TWIS)**

Anthony’s leadership and local knowledge of Philadelphia spans various educational, cultural, and philanthropic agencies and municipal government. An advocate for diverse people groups, Anthony also addresses the issues veterans face through his role as Chairman of the Philadelphia Parade Inc.

As the Office of Town Watch Integrated Services (TWIS) Executive Director for 28 years, his leadership is one of a father’s heart and has created an environment for his staff, the community, and anyone he encounters with a sense of belonging. Anthony is responsible for developing training, overseeing staff operations, and interacting with Government and Private/Public entities executives to empower residents to participate in becoming part of Town Watch groups in their community.

Before TWIS, Anthony was the former Director of Community Affairs for Oaktree Health Plan and the Director of Operations for the Community / Family intervention Program and the Town Watch Program. He is a much sought-after trainer and motivational speaker who has addressed audiences of young people and adults nationwide, speaking on various subjects as one of the guiding forces behind one of the most dynamic programs in the City of Philadelphia. By motivating neighborhoods and their residents to stabilize their environment, reduce crime, and develop and utilize a public and private program network to help communities become self-sufficient. Anthony has also empowered his staff as they serve residents spanning 21 police districts, and thousands of volunteers work in collaboration with hundreds of organizations.

Anthony attended Holy Family University, obtained certification in developing treatment plans, and designed a “Drug Education Program.” The National Baptist Convention adopted the educational curriculum as a critical platform for assisting families affected by drug use. He received an Associate’s Degree from the Community College of Philadelphia in Accounting and Political Science. While attending CCP, he became President of the Black Student Union and the First Black President of the Student Government. He studied Business Administration at LaSalle College, graduated from Antioch University, and received a B.A. in Social Services. He received his Master’s Degree in Government Relations from Southwest University.



**TOWN WATCH NEW GROUP APPLICATION**  
Scan QR-Code or visit: [PHILA.GOV/TOWNWATCH](http://PHILA.GOV/TOWNWATCH)



FIGURES BASED FROM 5/2023

# OFFICE OF TOWN WATCH INTEGRATED SERVICES (TWIS)



## Office of Town Watch Integrated Services (TWIS)

**Anthony Murphy**  
*Executive Director*

**Brenda Playfair**  
*Administrative Assistant*

**Pablo Mateo**  
*Director of Operations*

**Alicia Hernandez-Mette**  
*Supervisor, Northeast Division*

**Tara E. Smith**  
*Supervisor, West Division*

**Carmette L. Dickerson**  
*Supervisor, South Division*

**Reginald Hall**  
*Supervisor, Northwest Division*

**Ronald Ryan**  
*CSS, Northeast Division*

**William Summers**  
*CSS/Trainer, East Division*

**Kim Caldwell**  
*CSS, Central Division*

**Ayana Blount**  
*Community Support Specialist*

**Eileen Chen**  
*Community Support Specialist*

**TBD**  
*Community Support Specialist*

**Gregory Bucceroni**  
*Community Support Specialist (CSS)*

**TBD**  
*Community Support Specialist*

**TBD**  
*Community Support Specialist*



# OFFICE OF THE VICTIM ADVOCATE (OVA)

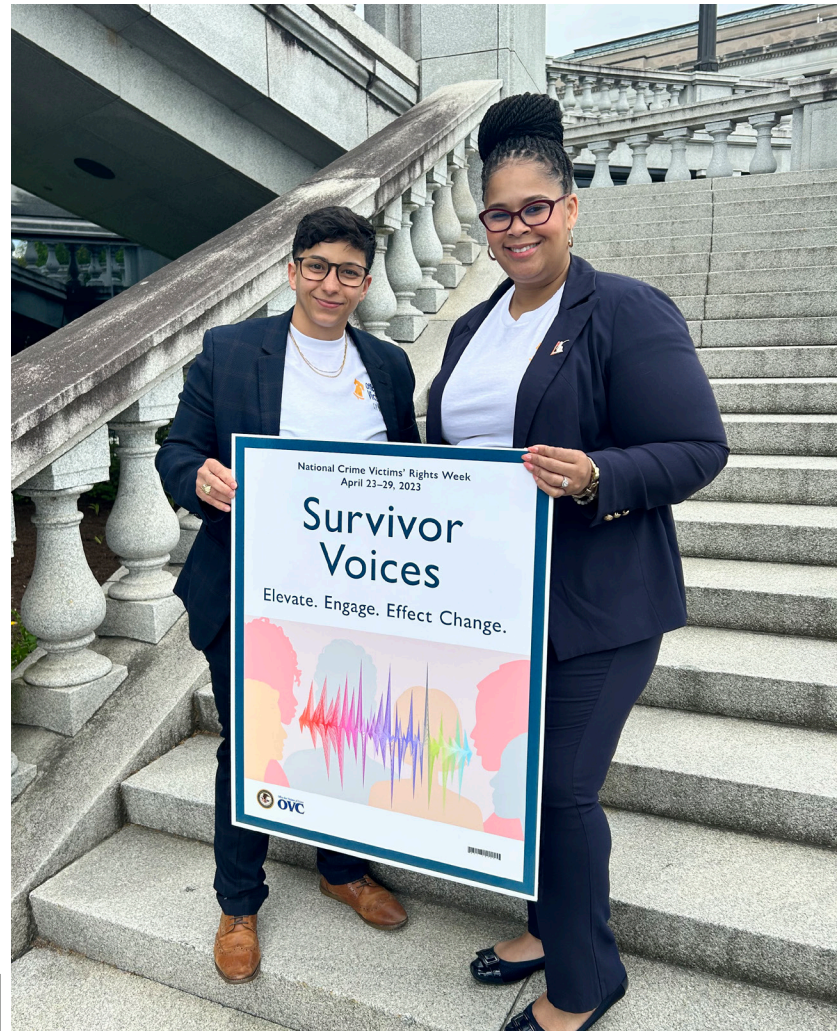
## ABOUT OVA

The City of Philadelphia Office of the Victim Advocate was established on February 7th of 2022 and is led by the City's first-ever appointed Victim Advocate, Adara Combs. Adara L. Combs, Esq. was confirmed by City Council and appointed by Mayor Jim Kenney to lead the Office of the Victim Advocate (OVA) at the end of January 2022.

The new Office of the Victim Advocate is an independent agency. It results from a push by the City Council's Special Committee on Gun Violence Prevention. The chair of that committee, Councilmember Kenyatta Johnson, wanted the position to go beyond politics. "We're here to connect, collaborate, and partner," said Council Member Kenyatta Johnson.

The office partners with law enforcement agencies, including the police department, the district attorney's office, the courts, and the Pennsylvania attorney general's office, to help shape public policy to help address the needs of victims. "There's been a need for someone to be a voice for the victim and what the victim desires," said Combs.

The office specializes in helping victims and co-victims of gun violence but supports other areas of victimization, including domestic violence. Often victims and co-victims who have lost someone to gun violence do not know where to turn. The office is the connector to ensure individuals know who to contact when experiencing victimization. The office also provides oversight and strategic support to community-based victim service agencies and care providers.



**SUPPORTING VICTIMS  
AND CO-VICTIMS.  
ADVOCATING FOR  
THEIR NEEDS.**

# ABOUT THE EXECUTIVE DIRECTOR OF OFFICE OF THE VICTIM ADVOCATE (OVA)



**ADARA COMBS**

*Executive Director*

**OFFICE OF THE  
VICTIM ADVOCATE**

Adara L. Combs, Esq. was confirmed by City Council and appointed by Mayor Jim Kenney to lead the Office of the Victim Advocate (OVA) at the end of January 2022. The office opened its doors on February 7, 2022.

Adara comes to OVA after a decade-long career with the Philadelphia District Attorney's Office where she served as a diversion coordinator, prosecutor, and supervisor. She is a lifelong Philadelphian, Philadelphia High School for Girls' graduate, and alum of both Franklin & Marshall College and the Beasley School of Law at Temple University.

Combs is a lifelong Philadelphian who, unfortunately, has also been impacted by the City's record number of homicides and gun violence. "Next to me is an obituary for my little cousin who was murdered two weeks ago," she said on the virtual press conference announcing her appointment, holding up a photo of her cousin. Before being named in her current role, she was supervisor of the Juvenile Division at the Philadelphia District Attorney's Office after a decade-long career fighting to secure justice for victims as a prosecutor.

After having served as the voice for many families who were victimized and tragically losing loved ones in her own family to violence, she works tirelessly to support victims of this City. Adara L. Combs, Esq. knows firsthand that the pursuit of justice involves all of us and can only be won through collaborative leadership while working in and with our communities.



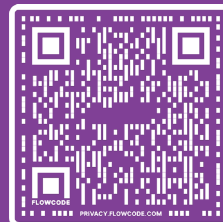
**LAND TITLE BUILDING**  
100 S. BROAD ST., 4<sup>TH</sup> FLOOR



**OFFICE NUMBER:**  
(215) 686-2115



**EMAIL:**  
VICTIM.ADVOCATE@PHILA.GOV



**OVA'S LIST  
OF RESOURCES**

# OFFICE OF THE VICTIM ADVOCATE (OVA)

## OUR PRIORITIES

- *Policy changes that help victims & co-victims*
- *Meaningful community engagement*
- *Enhance services provided to victims*
- *Community partner building*

## WHAT WE DO

- *Create policies and strategies that positively impact Philadelphia*
- *Connect victims to services*
- *Provide support to victims and co-victims of violent crimes*
- *Provide support to victim service agencies*



ADVOCACY



SUPPORT

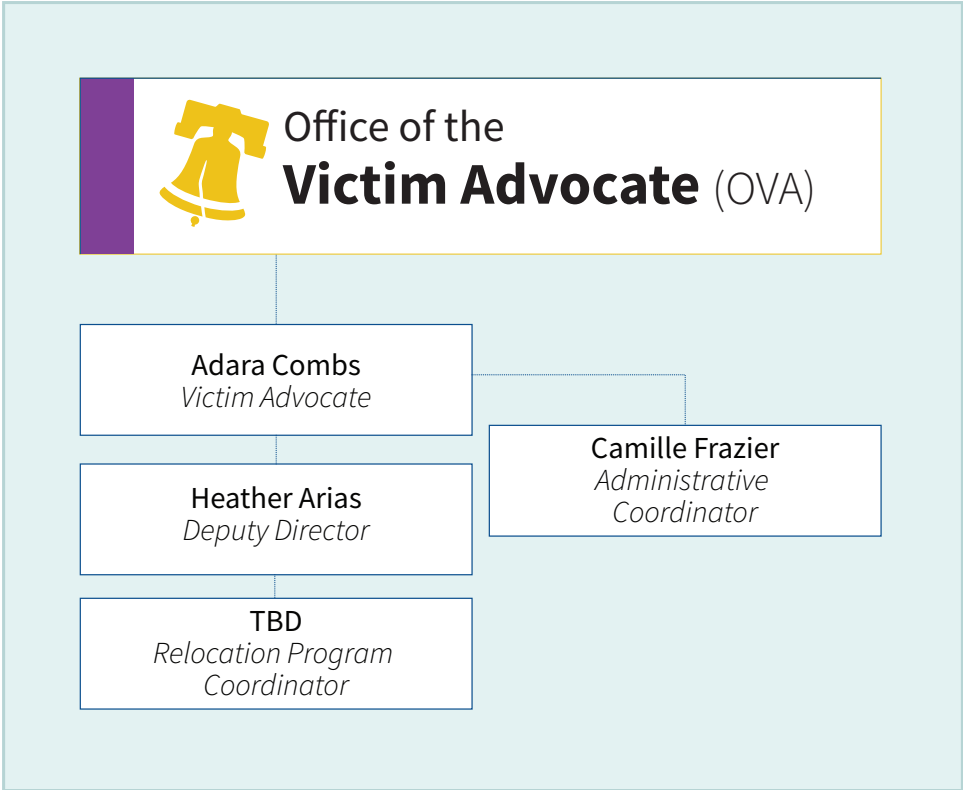


STRATEGY



POLICY CHANGE





# IMPACTED BY GUN VIOLENCE IN YOUR NEIGHBORHOOD? ¿LE AFECTA LA VIOLENCIA CON ARMAS EN SU VECINDARIO?

## GET REFERRALS FOR:

- CONFLICT RESOLUTION
- CRIME VICTIM SUPPORT
- COUNSELING
- PROGRAMS FOR YOUTH
- OVER 10,000 SUPPORT SERVICES

## OBTENGA RECOMENDACIONES SOBRE:

- RESOLUCIÓN DE CONFLICTOS
- APOYO A VÍCTIMAS DE DELITOS
- ASESORAMIENTO
- PROGRAMAS PARA JÓVENES
- MÁS DE 10.000 SERVICIOS DE SOPORTE

**DIAL 211, OPTION 3 OR TEXT YOUR ZIP CODE TO 898-211**  
and connect to gun violence resources in your community.

**MARQUE 211, OPCIÓN 3 O ENVÍE UN MENSAJE DE TEXTO  
CON SU CÓDIGO POSTAL AL 898-211** y conéctese con  
los recursos contra la violencia con armas de su comunidad.



# Pennsylvania | Southeast

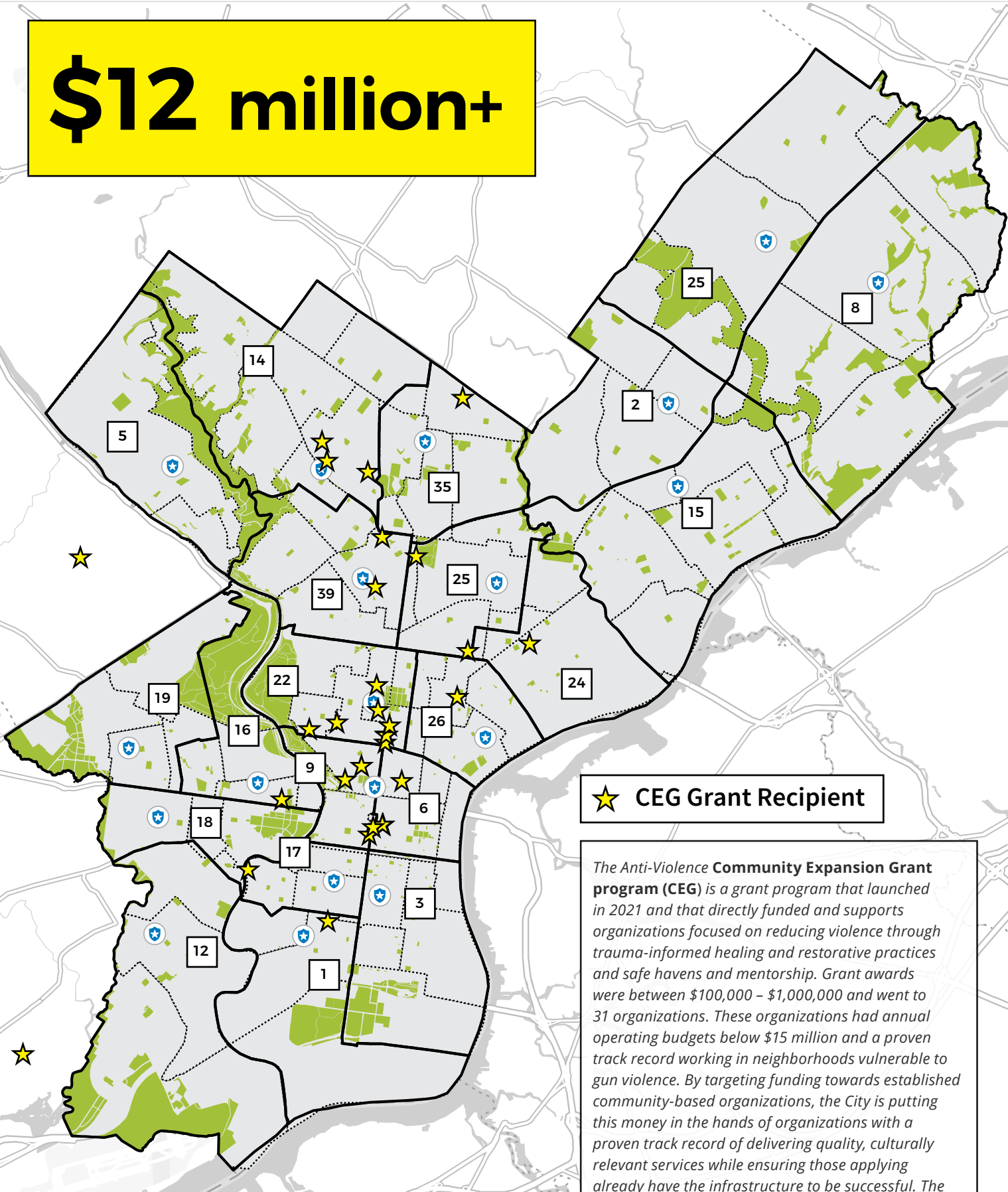
**SCAN THE QR CODE TO LEARN MORE**  
**ESCANEA EL CÓDIGO QR PARA SABER MÁS**



United Way  
of Greater Philadelphia  
and Southern New Jersey



**\$12 million+**



**★ CEG Grant Recipient**

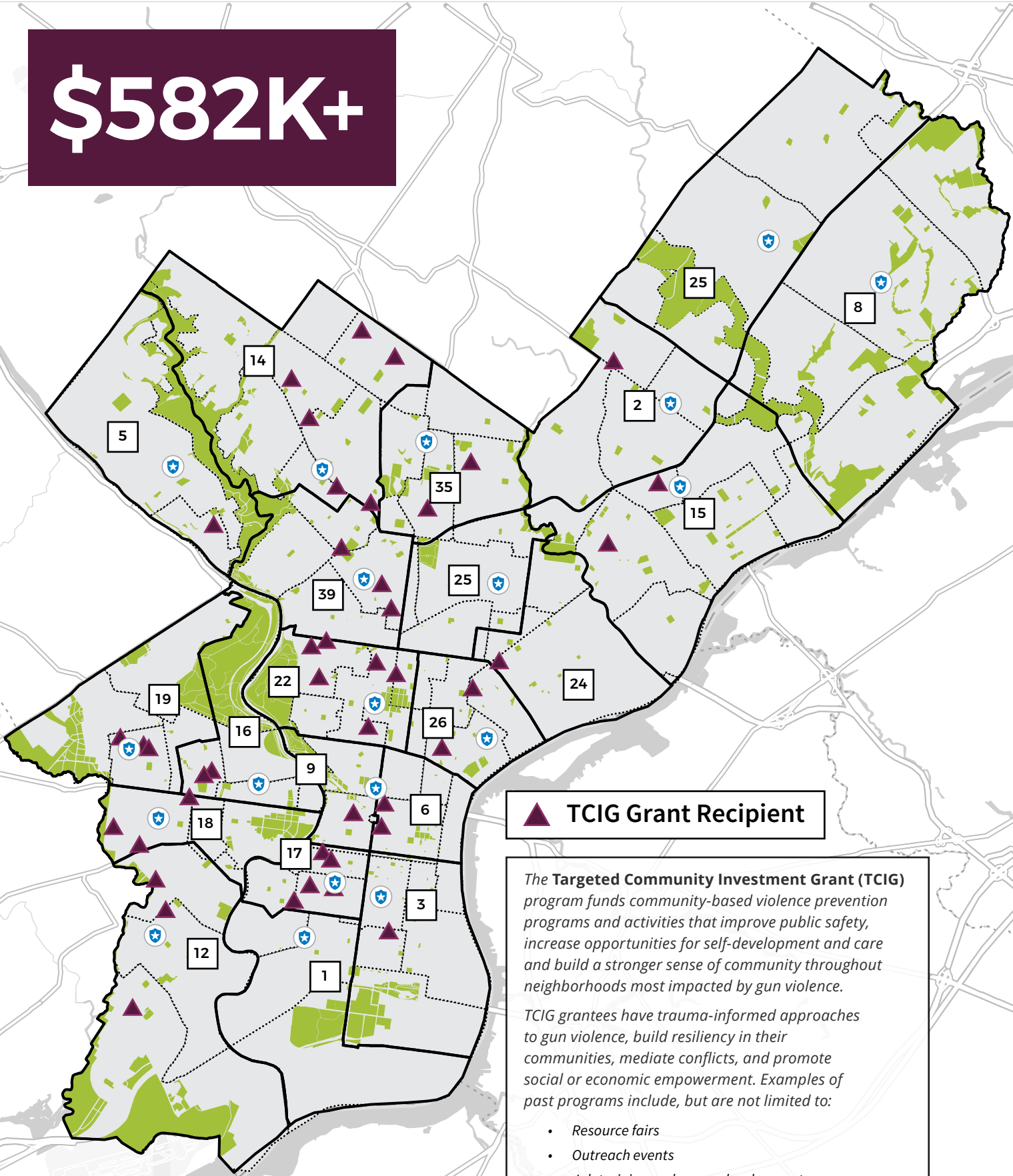
*The Anti-Violence **Community Expansion Grant program (CEG)** is a grant program that launched in 2021 and that directly funded and supports organizations focused on reducing violence through trauma-informed healing and restorative practices and safe havens and mentorship. Grant awards were between \$100,000 – \$1,000,000 and went to 31 organizations. These organizations had annual operating budgets below \$15 million and a proven track record working in neighborhoods vulnerable to gun violence. By targeting funding towards established community-based organizations, the City is putting this money in the hands of organizations with a proven track record of delivering quality, culturally relevant services while ensuring those applying already have the infrastructure to be successful. The Community Expansion Grant focuses on providing direct trauma-informed healing and restorative practices or safe havens and mentorship programs.*



*“We want relationships,  
not just a program.”*

— Edwin Desamour  
Chief Programs & Events Officer  
at the Lighthouse

**\$582K+**



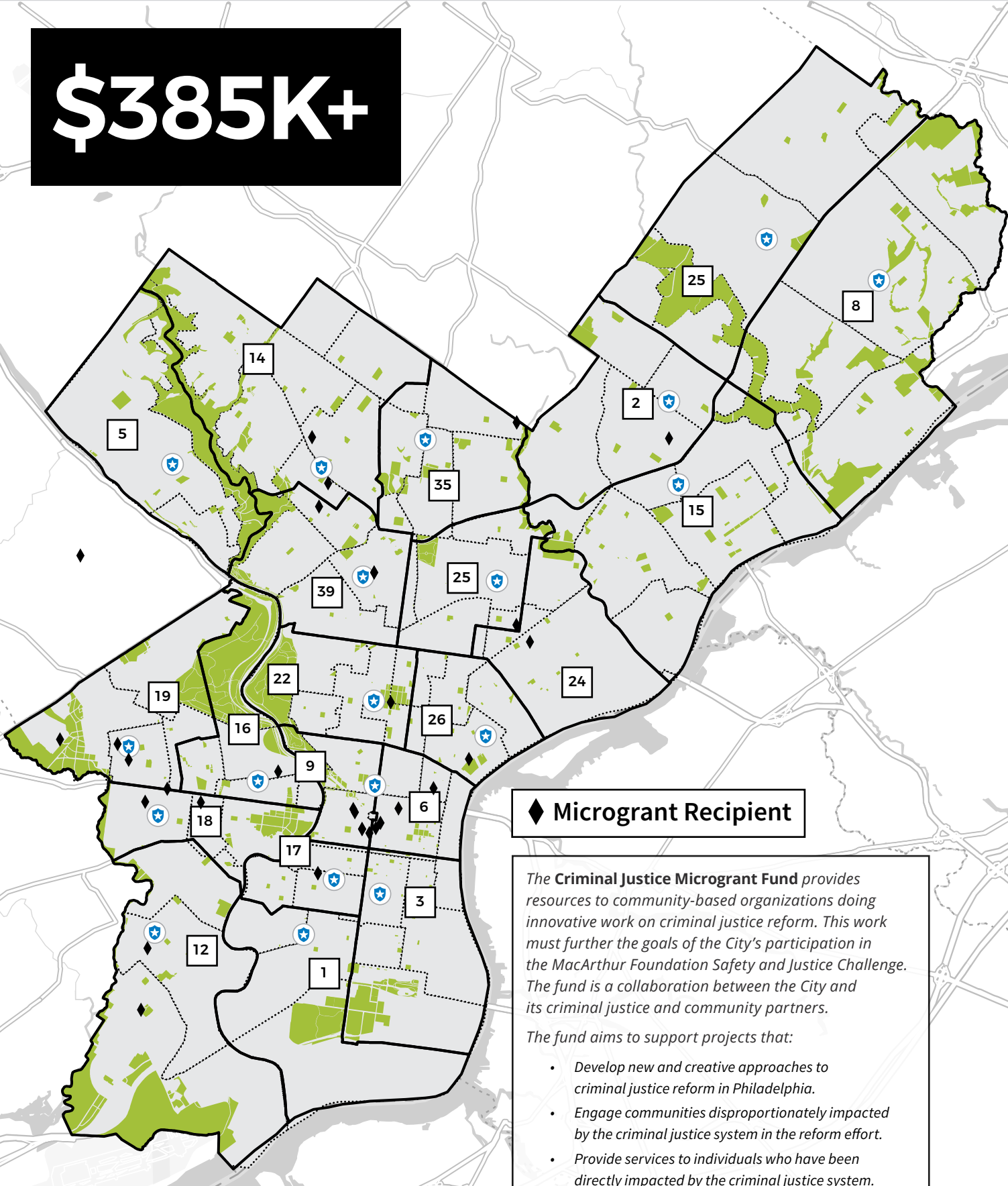
**▲ TCIG Grant Recipient**

**The Targeted Community Investment Grant (TCIG)** program funds community-based violence prevention programs and activities that improve public safety, increase opportunities for self-development and care and build a stronger sense of community throughout neighborhoods most impacted by gun violence.

TCIG grantees have trauma-informed approaches to gun violence, build resiliency in their communities, mediate conflicts, and promote social or economic empowerment. Examples of past programs include, but are not limited to:

- Resource fairs
- Outreach events
- Job training and career development
- Neighborhood and community beautification
- Education events and workshops
- Community engagement

**\$385K+**



**◆ Microgrant Recipient**

*The Criminal Justice Microgrant Fund provides resources to community-based organizations doing innovative work on criminal justice reform. This work must further the goals of the City's participation in the MacArthur Foundation Safety and Justice Challenge. The fund is a collaboration between the City and its criminal justice and community partners.*

*The fund aims to support projects that:*

- *Develop new and creative approaches to criminal justice reform in Philadelphia.*
- *Engage communities disproportionately impacted by the criminal justice system in the reform effort.*
- *Provide services to individuals who have been directly impacted by the criminal justice system.*
- *Are BIPOC-led organizations seeking general operating support.*

# NAVIGATING THE RESOURCE GUIDE BY POLICE DISTRICT

Philadelphia's safety resources are closely integrated within the city's local communities. When looking for resource information, it helps to start with what is available close to where you live. We've organized this section by police districts and their six groupings. Use the QR code below or the map on the next page to find out your police district.

**FIND YOUR DISTRICT  
SCAN QR CODE OR VISIT**  
[HTTPS://DISTRICTS.PHILLYPOLICE.COM](https://districts.phillypolice.com)

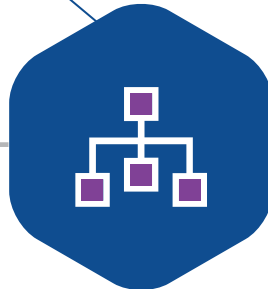


SEARCH BY ENTERING  
YOUR HOME ADDRESS



## CATEGORIES

The resources listed within the six police district division areas are grouped into several categories to make finding what is important to you easier.



## CONTACT INFO

Use this information to visit or contact organizations for assistance.

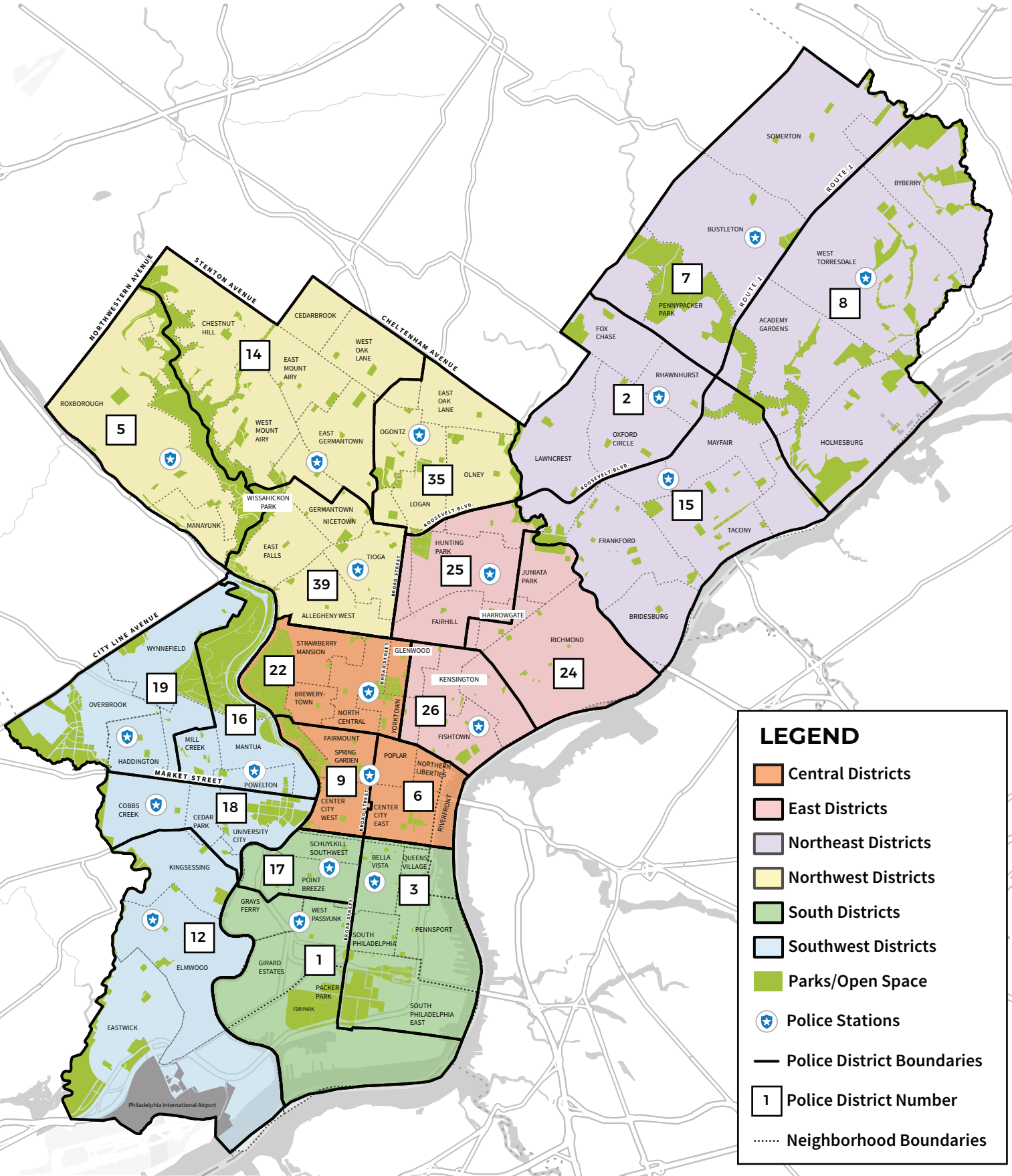


## MORE INFO

If you can't find a desired resource in your district, refer to the index on pages 72 to 77 to look up the complete list of resources within the guide.







## Categories of Services

### CRISIS RESPONSE & VICTIM SERVICES

### HOSPITALS

### LIST OF PARKS & RECREATION SITES

### NEIGHBORHOOD RESOURCES

### HOUSING

### EMPLOYMENT

### EDUCATION

## Crisis Response Centers

Crisis Response Centers provide 24/7 walk-in service for people in need of immediate mental health or substance abuse treatment due to a personal crisis. These services are available to all Philadelphians regardless of residence.

## Behavioral Health Services

### *Community Behavioral Health*

The Department of Behavioral Health and Intellectual Disability Services provides 24-hour information/referrals to behavioral supports: (888) 545-2600

### *Network of Neighbors Responding to Violence*

The Network of Neighbors provides free support to communities following violent or traumatic incidents.

The Network only responds when invited by the community.

**CONTACT:** (267) 233-4837  
networkofneighbors@phila.gov

### *Community Health Centers*

The following Community Health Centers focus on providing community-based treatment and rehabilitation.

## Other Important Contact Information

### PARENTING EDUCATION

Free parenting education and support groups that help parents improve parenting skills and relationships with their children.

To learn more about the range of classes to meet your needs, call (215) PARENTS (727-3687).

### HOTLINE PHONE NUMBER

### BEHAVIORAL/MENTAL HEALTH HOTLINES

If you or a loved one require immediate assistance, please call 9-1-1 or use these emergency services for support:

### MENTAL HEALTH CRISIS:

(215) 685-6440

### SUICIDE AND CRISIS INTERVENTION HOTLINE:

(215) 686-4420

\*Provides 24/7 counseling, consultation, and referrals for people's psychiatric assistance Intellectual Disability Services

### EMERGENCY LINE:

(215) 829-5709;  
(215) 685-9454 (after 5 p.m.)

### DOMESTIC VIOLENCE

If you or your loved one is in immediate danger, please contact the police at 9-1-1. If you believe someone needs help, they can call the Philadelphia domestic violence hotline: (866) 723-3014

It's available 24-hours a day, seven days a week. Hotline counselors can assist you with various services, including emergency shelter and crisis intervention. Calls are free, confidential, and anonymous, and interpretation services are available.

### CHILD ABUSE

If you suspect that a child may be abused or neglected, contact the child abuse hotline: (215) 683-6100

Philadelphia's child abuse hotline is available 24-hours a day, seven days a week. You may choose whether to give your name when reporting. Regardless, your name will never be revealed to anyone else. This practice is strictly enforced.

### DRUG ABUSE

If you think someone is overdosing, always call 9-1-1. The police and fire departments have naloxone, the antidote for opioid overdoses, and they can provide additional care.

The Good Samaritan Law protects callers so they cannot get in trouble for witnessing or reporting an overdose. If you or someone requires recovery assistance, please call the Alcohol & Other Drug Information and Recovery Support Line, available 24/7: (800) 221-6333

**BASIC NEEDS**

If you need support finding services for basic needs such as food, clothing, hygiene, personal goods, and transportation, dial 2-1-1.

This service is available 24-hours a day, Seven days a week.

**FREE SUMMER MEALS**

Over 1,000 sites in Philadelphia serve free summer meals and snacks to youth ages 18 and under and students 19 and older enrolled in qualifying school programs. They're at recreation centers, parks, churches, and neighborhood blocks. For information on sites within your community, call the toll-free Summer Meals Hotline: (855)-252-Meal, or text "FOOD" to 877-877

**GENERAL REQUEST OR COMPLAINT**

If you have a request or want to report a general complaint with the City of Philadelphia, dial 3-1-1. Philly 311 is available Monday through Friday, 8:15-4:15 p.m.

**ONLINE DIRECTORY SERVICES AND RESOURCES****YOUTH MATTERS PHILLY**

Philly youth can find and access local resources, like shelters, housing, food banks, healthcare providers, and more. The service connects people to nearby resources and services. Use the search function to see a map of local resources and advocates who can help now. [youthmattersphilly.org](http://youthmattersphilly.org)

**211 SEPA**

211 provides an easy-to-remember telephone number and website for finding health and human services for everyday needs [211sepa.org](http://211sepa.org)

**UP THE BLOCK**

*Philly gun violence resource hub*  
[www.uptheblock.org](http://www.uptheblock.org)

**CITY OF PHILADELPHIA DIRECTORY**

*For more information on violence prevention efforts and resources in your neighborhood, please contact the*

**OFFICE OF VIOLENCE PREVENTION**

(215) 686-0789  
[ovpinfo@phila.gov](mailto:ovpinfo@phila.gov)

**DEPARTMENT OF HUMAN SERVICES**

(215) 683-4347  
[phila.gov/dhs](http://phila.gov/dhs)

**DEPARTMENT OF PUBLIC HEALTH**

(215) 686-5200  
[phila.gov/health](http://phila.gov/health)

**DEPARTMENT OF STREETS**

(215) 686-5560  
[csstreets@phila.gov](mailto:csstreets@phila.gov)  
[philadelphiastreet.com](http://philadelphiastreet.com)

**DIVISION OF HOUSING & COMMUNITY DEVELOPMENT**

(215) 686-9749  
[phila.gov/dhcd](http://phila.gov/dhcd)

**MAYOR'S OFFICE OF BLACK MALE ENGAGEMENT**

(215) 686-0332  
[Obme@phila.gov](mailto:Obme@phila.gov)  
[phila.gov/obme](http://phila.gov/obme)

**OFFICE OF REENTRY PARTNERSHIPS**

(215) 683-3370  
[orp@phila.gov](mailto:orp@phila.gov)  
[phila.gov/cjps](http://phila.gov/cjps)

**DEPARTMENT OF BEHAVIORAL HEALTH AND INTELLECTUAL DISABILITY SERVICES**

(215) 685-5400  
[dbhids.org](http://dbhids.org)

**OFFICE OF CIVIC ENGAGEMENT AND VOLUNTEER SERVICES**

(215) 686-2055  
[serve.phila.gov](http://serve.phila.gov)

**OFFICE OF COMMUNITY EMPOWERMENT AND OPPORTUNITY**

(215) 685-3600  
[ceoinfo@phila.gov](mailto:ceoinfo@phila.gov)  
[phila.gov/ceo](http://phila.gov/ceo)

**OFFICE OF ENGAGEMENT FOR WOMEN**

(215) 686-2154  
[phila.gov/ow](http://phila.gov/ow)

**OFFICE OF HOMELESS SERVICES**

(215) 686-7175  
[ohs-generalinfo@phila.gov](mailto:ohs-generalinfo@phila.gov)  
[phila.gov/homeless-services](http://phila.gov/homeless-services)

**OFFICE OF POLICY AND STRATEGIC INITIATIVES FOR CRIMINAL JUSTICE AND PUBLIC SAFETY**

[Cjps@phila.gov](mailto:Cjps@phila.gov)  
[phila.gov/cjps](http://phila.gov/cjps)

**OFFICE OF VICTIM ADVOCATE**

(215) 686-2115  
[Victim.advocate@phila.gov](mailto:Victim.advocate@phila.gov)

**NEXT LEVEL LEARNING (OFFICE OF ADULT EDUCATION)**

(215) 686-5250  
[adultedu@phila.gov](mailto:adultedu@phila.gov)  
[phila.gov/adult-education](http://phila.gov/adult-education)

**PHILADELPHIA DISTRICT ATTORNEY'S OFFICE**

(215) 686-8000  
[justice@phila.gov](mailto:justice@phila.gov)  
[phillyda.org](http://phillyda.org)

**OFFICE OF YOUTH ENGAGEMENT**

(215) 686-2159  
[phila.gov/youth-engagement](http://phila.gov/youth-engagement)

**OFFICE OF LGBT AFFAIRS**

(215) 686-0330  
[phila.gov/lgbt](http://phila.gov/lgbt)

**POLICE ADVISORY COMMISSION**

(215) 685-0891  
[pac@phila.gov](mailto:pac@phila.gov)[phila.gov/pac](http://phila.gov/pac)

**TOWN WATCH INTEGRATED SERVICES**

(215) 686-1459  
[phila.gov/townwatch](http://phila.gov/townwatch)

**OFFICE OF THE MAYOR**

(215) 686-2181  
[james.kenney@phila.gov](mailto:james.kenney@phila.gov)  
[phila.gov/mayor](http://phila.gov/mayor)

# CENTRAL

Central Division Inspector:  
POLICE.INSP\_CPD@phila.gov

## DISTRICT 6

400 N. Broad St.  
Philadelphia, PA 19107  
(215) 686-3060  
@PPD06Dist

**NEIGHBORHOODS:**  
Center City East  
Northern Liberties  
Popular  
Riverfront

## CRISIS RESPONSE & VICTIM SERVICES

### PHILADELPHIA DISTRICT ATTORNEY'S OFFICE

(215) 686-8000  
3 S. Penn Sq.  
Philadelphia, PA 19107

### CENTER CITY CRIME VICTIM SERVICES

(215) 665-9680  
1315 Walnut St., #320  
Philadelphia, PA 19107

### WOMEN IN TRANSITION

(215) 564-5301  
718 Arch St., Ste. 401N  
Philadelphia, PA 19106  
<https://helpwomen.org>

## HOSPITAL(S)

### PENNSYLVANIA HOSPITAL

800 Spruce St.  
Philadelphia, PA, 19107  
(215) 829-3000

### THOMAS JEFFERSON UNIVERSITY HOSPITAL

111 S. 11<sup>TH</sup> St.  
Philadelphia, PA, 19107  
(215) 955-6000

### WILLS EYE HOSPITAL

840 Walnut St.  
Philadelphia, PA, 19107  
(215) 928-3000

## PARKS & RECREATION

Northern Liberties Recreation Center  
East Poplar Playground  
10<sup>TH</sup> and Lemon Playground

## NEIGHBORHOOD RESOURCES

### PHILADELPHIA CHINATOWN DEVELOPMENT CORPORATION

301-305 N. 9<sup>TH</sup> St.  
Philadelphia, PA, 19107  
(215) 922-2156  
<https://chinatown-pcdc.org/>

*Services: Housing Counseling, Family Support Services, Youth Service, Housing & Development, Community Building and Events*

### LIBERTY RESOURCES

112 N. 8<sup>TH</sup> St., Suite 600,  
Philadelphia, PA, 19107  
(215) 634-2000  
<https://libertyresources.org/>

*Services: Advocacy, Deaf Outreach, Information and Referral, Peer Support, Skills Training, Transitioning / Youth Services, Support Groups, Housing Counselling, Food Pantry*

## HOUSING

### THE SALVATION ARMY RED SHIELD FAMILY RESIDENCE

715 N. Broad St.  
Philadelphia, PA, 19123  
(215) 787-2887  
<https://easternusa.salvationarmy.org/eastern-pennsylvania/greater-philadelphia/red-shield-family-residence/>

*Serving: All family configurations, including families with teenaged children, and single men with children are accepted.*

### PHILLY HOUSE

*(Formerly known as Sunday Breakfast Rescue)*  
302 N. 13<sup>TH</sup> St.  
Philadelphia, PA, 19107

<https://www.phillyhouse.org/>

*Serving: Men*

## EMPLOYMENT

### URBAN LEAGUE OF PHILADELPHIA

121 S. Broad St. #9,  
Philadelphia, PA, 19107  
(215) 985-3220  
<https://urbanleaguephila.org/>

*Services: Youth & Education; Workforce Development; Housing Counseling; Entrepreneurship; and Health & Wellness*

### PHILADELPHIA YOUTH NETWORK

400 Market St. #200,  
Philadelphia, PA, 19106  
(267) 502-3800  
<https://www.pyninc.org/>

*Serving: Youth/Young Adults Ages 12-24*

### POWERCORPS PHL

990 Spring Garden St.  
Philadelphia, PA, 19123  
(215) 221-6900  
<https://powercorpssphl.org/>

*Serving: Youth/Young Adults Ages 18-26*

## EDUCATION

### OIC CAREER AND ACADEMIC DEVELOPMENT INSTITUTE (CADI)

444 N. 3<sup>RD</sup> St. 4<sup>TH</sup> Floor,  
Philadelphia, PA, 19123  
(215) 567-2410  
<https://www.philasd.org/opportunitynetwork/oic-career-and-academic-development-institute/>

## TARGETED COMMUNITY INVESTMENT GRANT (TCIG) GRANT RECIPIENTS

### KEYSTONE ENERGY EMPLOYMENT PIPELINE (KEEP) ROLLING

211 N. 13<sup>TH</sup> St., 4<sup>TH</sup> Floor  
Philadelphia, PA 19107  
(267) 773-5090

## COMMUNITY EXPANSION GRANT RECIPIENTS (CEG)

### MAN UP PHL

1207 Chestnut St.  
Philadelphia, PA 19107  
(267) 748-7818

### URBAN LEAGUE OF PHILADELPHIA

121 S. Broad St., 6<sup>TH</sup> fl.  
Philadelphia, PA 19122

### YOUTH OUTREACH ADOLESCENT COMMUNITY AWARENESS PROGRAM (YOACAP)

1211 Chestnut St.  
Philadelphia, PA 19104

### EDUCATION WORKS (POWER CORPS)

990 Spring Garden St., Suite 601  
Philadelphia, PA 19123  
(484) 380-5616

## MICRO-GRANTS RECIPIENTS

### CAREER WARDROBE

444 N. 3<sup>RD</sup> St., Suite 105  
Philadelphia, PA 19123

### PHILLY AUDIO DIARIES OF CULTURE TRUST GREATER PHILADELPHIA

1315 Walnut St.  
Philadelphia, PA 19107

### THE LIBERATION FOUNDATION

511 N. Broad St., Unit 1006  
Philadelphia, PA 19123  
<https://liberation-foundation.org/>

*The Liberation Foundation runs reentry preparation programming for currently-incarcerated Pennsylvanians preparing to return home from incarceration. Other programs include: The Student Justice Initiative and Project Hope, which offers a 16-week Reentry Prep course.*

### UNINCARCERATED MINDS INC.

1229 Chestnut St.  
Philadelphia, PA 19107

### (215) PEOPLE'S ALLIANCE EDUCATION FUND

924 Cherry St. 5<sup>TH</sup> Floor  
Philadelphia, PA 19107

## DISTRICT 9

400 N. Broad St.  
Philadelphia, PA 19130  
(215) 686-3090

@PPD09Dist  
**NEIGHBORHOODS:**

Center City West  
Fairmount  
Spring Garden

## CRISIS RESPONSE & VICTIM SERVICES

### SUPPORT CENTER FOR CHILD ADVOCATES

(267) 546-9200  
1617 John F. Kennedy Blvd., #1200  
Philadelphia, PA 19103

### WOMEN AGAINST ABUSE

(215) 386-1280  
100 S. Broad St., #1341  
Philadelphia, PA 19110  
[www.womenagainstabuse.org](http://www.womenagainstabuse.org)  
24/7 Hotline: 1.866.723.3014

### WOMEN ORGANIZED AGAINST RAPE

(215) 985-3315  
1617 John F. Kennedy Blvd., #800  
Philadelphia, PA 19103  
[www.woar.org](http://www.woar.org)

## HOSPITAL(S)

### MAGEE REHABILITATION HOSPITAL

1513 Race St.  
Philadelphia, PA, 19102  
(215) 587-3333  
*Rehabilitation*

## PARKS & RECREATION

Lloyd Hall Recreation Center  
Roberto Clemente Playground  
Francisville Recreation Center  
William H (Billy) Markward Memorial Playground  
26th and Pennsylvania Playground  
Schuylkill River Park

## POLICE ATHLETIC LEAGUE (PAL)

### COZEN

732 N. 17<sup>TH</sup> St.  
Philadelphia, PA, 19130  
(215) 232-2101  
<https://phillypal.org/locations/>

## NEIGHBORHOOD RESOURCES

### AFFORDABLE HOUSING CENTERS OF PENNSYLVANIA

846 N. Broad St.  
Philadelphia, PA, 19130  
(215) 765-1221  
<https://www.ahcopa.org/>

*HUD-Certified, Non-Profit Housing Counseling Agency with programs for First Time Homebuyer Education, Foreclosure Prevention, and Rental Eviction Assistance*

### CLARIFI

1635 Market St., Suite 510  
Philadelphia, PA, 19103  
(215) 563-5665  
[www.clarifi.org](http://www.clarifi.org)

*Services: Financial Empowerment; Housing Success; Community Education*

### URBAN AFFAIRS COALITION

*(Formerly known as Greater Philadelphia Urban Affairs Coalition (GPUAC))*  
1650 Arch St., Suite 2701  
Philadelphia, PA 19103  
(215) 851-0110  
<https://uac.org/projects/one-day-at-a-time-odaat/>

*Services: UAC is a fiscal sponsor, offering services to established and emerging nonprofits and specializing in consulting services for economic development projects.*

### TENANT UNION REPRESENTATIVE NETWORK

100 S. Broad St. Suite 800  
Philadelphia, PA, 19110  
(215) 940-3900  
<https://rturn.net/>

*Services: Advocacy; Landlord/Property Background Check; Renter Housing Inspections; Tenant Right Classes; Renters Rights Webinar*

**HOUSING**

Call the Homelessness Prevention Hotline at (215) 686-7177 and follow the instructions. Due to high call volume, it may take more than 72 hours to receive a callback.

**OFFICE OF SUPPORTIVE HOUSING**

1401 John F. Kennedy Blvd.  
Philadelphia, PA, 19102  
Ask a Question: (215) 686-7175  
OHS@phila.gov  
<https://www.phila.gov/departments/office-of-homeless-services/>

**APPLETREE FAMILY CENTER**

1430 Cherry St.  
Philadelphia, PA, 19102  
(215) 686-7150

*Serving: Single Women and Families*

**ROOSEVELT DARBY CENTER**

802 N. Broad St.  
Philadelphia, PA, 19130  
(215) 685-3700

*Serving: Men*

**VALLEY YOUTH HOUSE**

1500 Sansom St., Suite 300A  
Philadelphia, PA, 19102  
(215) 925-3180  
[www.valleyyouthhouse.org](http://www.valleyyouthhouse.org)

*Services: Camp Fowler; Emergency Shelter; In-School Programs; LGBTQ+ Services; Life Skills Development; Mentoring; Permanency Services; Prevention; Street Outreach; Substance Abuse; Transitional Housing; Treatment and Therapeutic Services; Employment Opportunities; Internships*

**EMPLOYMENT****JEVS HUMAN SERVICES**

1845 Walnut St.  
Philadelphia, PA, 19103  
(215) 854-1800

**CAREER LINK (SUBURBAN STATION)**

1617 John F. Kennedy Blvd.  
Philadelphia, PA, 19103  
(215) 557-2592  
[www.pacareerlinkphl.org/](http://www.pacareerlinkphl.org/)

**PHILADELPHIA UNEMPLOYMENT PROJECT (PUP)**

112 N. Broad St. 11<sup>TH</sup> Floor  
Philadelphia, PA, 19102  
(215) 557-0822  
<https://philaup.org/web/>

*Services: Unemployment Support*

**MAYOR'S OFFICE OF REENTRY PARTNERSHIPS**

1425 Arch St.  
Philadelphia, PA, 19102  
(215) 683-3370  
Reentry Employment Resources

**MURAL ARTS (GUILD PROGRAM)**

1727-29 Mt. Vernon St.  
Philadelphia, PA, 19130  
(215) 685-0750

**EDUCATION****EDUCATION SERVICES NEXT LEVEL LEARNING (OFFICE OF ADULT EDUCATION)**

1515 Arch St. 8<sup>TH</sup> Floor  
Philadelphia, PA, 19102  
(833) 750-5627

**COMMUNITY COLLEGE OF PHILADELPHIA**

1700 Spring Garden St.  
Philadelphia, PA, 19130  
(215) 751-8531

**BENJAMIN FRANKLIN HIGH SCHOOL EOP**

550 N. Broad St.  
Philadelphia, PA, 19130  
(215) 400-7600 Option 2

**GATEWAY TO COLLEGE AT CCP**

1700 Spring Garden St.  
Philadelphia, PA, 19130  
(215) 751-8404

**TARGETED COMMUNITY INVESTMENT GRANT (TCIG) GRANT RECIPIENTS**

Students Run Philly Style Summer Series  
1819 John F. Kennedy Blvd., Suite 480,  
Philadelphia, PA 19103  
(267) 930-3546

**COMMUNITY EXPANSION GRANT RECIPIENTS (CEG)**

**RESTORATIVE JUSTICE GUILD PROGRAM, MURAL ARTS PHILADELPHIA**  
1727-29 Mt. Vernon St.  
Philadelphia, PA 19130  
(215) 685.0750

**MICRO-GRANTS RECIPIENTS****PHILADELPHIA PRISON SOCIETY**

230 S. Broad St.  
Philadelphia, PA 19102

**STUDENTS RUN PHILLY STYLE**

1819 John F. Kennedy Blvd., Suite 480  
Philadelphia, PA 19103

**YOUTH SENTENCING & REENTRY PROJECT, INC.**

1528 Walnut St.  
Philadelphia, PA 19102

**PHILADELPHIA YOUTH BASKETBALL**

1735 Market St.  
Philadelphia, PA 19103

**YOUTH SENTENCING & REENTRY PROJECT (YSRP)**

1528 Walnut St., Suite 515  
Philadelphia, PA 19102

**DISTRICT 22**

1747 N. 17th St.  
Philadelphia, PA 19121  
(215) 686-3220

@PPD22Dist

**NEIGHBORHOODS:**

Brewerytown  
North Central  
Yorktown  
Strawberry Mansion

**HOSPITAL(S)****ST. JOSEPH'S HOSPITAL (DBA NORTH PHILA HEALTH SYSTEM)**

16<sup>TH</sup> and Girard Ave.  
Philadelphia, PA, 19130  
(215) 787-9000

**TARGETED COMMUNITY INVESTMENT GRANT (TCIG) GRANT RECIPIENTS****STRAWBERRY MANSION HEALING GARDEN**

2804 W. Lehigh Ave.  
Philadelphia, PA 19123  
(267) 250-5784

**NEIGHBORHOOD CREATING POSITIVE CONNECTIONS**

2829 W. Diamond St.  
Philadelphia, PA 19121  
(215) 280-1724

**BUCCS SPORTS (FOOTBALL & BASKETBALL) ANTI-VIOLENCE CAMPAIGN**

1721 W. Master St.  
Philadelphia, PA 19121  
(215) 906-3500

**LITERACY IN THE PARK**

2437 N. 18<sup>TH</sup> St.  
Philadelphia, PA 19132  
(267) 303-6434

**PHILADELPHIA GAMING INITIATIVE (PGI)**

2305 N. Broad St.  
Philadelphia, PA 19132  
(215) 901-6976

**SEE ME - SAVE ME HEALING CAMPAIGN**

2549 N. 31<sup>ST</sup> St.  
Philadelphia, PA  
(267) 252-1470

**COMMUNITY EXPANSION GRANT RECIPIENTS (CEG)****YOUTHBUILD PHILLY**

1231 N. Broad St., 2<sup>ND</sup> and 5<sup>TH</sup> Floors  
Philadelphia, PA 19122  
(215) 627-8671 x23

**PHILADELPHIA OIC**

1231 N. Broad St., 4<sup>TH</sup> Floor  
Philadelphia, PA 19122  
(215) 236-7700 x345

**OPPORTUNITIES INDUSTRIALIZATION CENTERS OF AMERICA, INC. (OICA) AND THE CAREERS & ACADEMIC INSTITUTE (CADI)**

1415 N. Broad St.  
Philadelphia, PA 19122  
(215) 778-1668

**CENTRAL DIVISION VICTIM SERVICES**

1538 Cecil B. Moore Ave.  
Philadelphia, PA 19121  
(267) 990-8788

**100 BLACK MEN PHILLY IN PARTNERSHIP WITH FATHER'S DAY RALLY COMMITTEE**

2300 W. Master St.  
Philadelphia, PA 19121  
(267) 253-0833

**MOTHERS IN CHARGE**

2839 Girard Ave.  
Philadelphia, PA 19130  
(215) 228-1718

**NEW OPTIONS MORE OPPORTUNITIES (NOMO)**

925 N. Broad St.  
Philadelphia, PA 19123  
(215) 459-0408

**MICRO-GRANTS RECIPIENTS****PEOPLE ADVANCING REINTEGRATION, INC**

2024 W. Hunting Park Ave.  
Philadelphia, PA 19140

**TEMPLE UNIVERSITY (ON BEHALF OF INSIDE OUT PRISON EXCHANGE PROGRAM)**

1801. N. Broad St.  
Philadelphia, PA 19122

# EAST

*East Division Inspector:*  
POLICE.INSP\_EPD@phila.gov

## DISTRICT 24

*District 24 and 25*

3901 Whitaker Ave.  
Philadelphia, PA 19124  
(215) 686-3240  
@PPD24Dist  
@PPD25Dist

### NEIGHBORHOODS:

Fairhill  
Feltonville  
Franklinville  
Juniata Park  
Harrowgate  
Hunting Park  
Port Richmond  
Wyoming

## PARKS & RECREATION

Frank Glavin Playground  
Thomas P Stokley Recreation Center  
Reverend M Monkiewicz Recreation Center  
Cohocksink Recreation Center  
Bernard Samuel Playground  
Robert T Heitzman Recreation Center  
Joseph A Scanlon Playground  
Boniface Piccoli Playground  
Joseph A Ferko Playground  
Marian Winfield Hissey Recreation Center  
Juniata Park Older Adult Center  
Trenton and Auburn Playground  
McPherson Square

**POLICE ATHLETIC LEAGUE (PAL)** <https://phillypal.org/locations>

### HARROWGATE PAL CENTER

851 E. Tioga St.  
Philadelphia, PA 19134  
(215) 423-4853

### 24<sup>TH</sup> PAL CENTER

2524 E. Clearfield St.  
Philadelphia, PA 19134  
(215) 426-6583

## NEIGHBORHOOD RESOURCES

### NEW KENSINGTON CDC

2771 Ruth St., Suite 1  
Philadelphia, PA 19134  
(215) 427-0350  
info@nkcfdc.org  
<https://nkcfdc.org>

## EDUCATION

### ONE BRIGHT RAY – SIMPSON

1142 East Erie Ave.  
Philadelphia, PA 19124  
(215) 744-6000  
Accelerated High School Programs.  
Ages 15-21. 2+ years behind

## TARGETED COMMUNITY INVESTMENT GRANT (TCIG) GRANT RECIPIENTS

### BY FAITH; HEALTH, AND HEALING INC.

2771 Ruth St.  
Philadelphia, PA  
(215) 397-0431  
byfaithternal@gmail.com  
[www.byfaithhealthandhealing.com](http://www.byfaithhealthandhealing.com)

*Programs: Mothers Helping Mothers;  
Men of Power; Summer Camp;  
Youth Carpentry Program*

## COMMUNITY EXPANSION GRANT RECIPIENTS (CEG)

### IMPACT SERVICES

1952 E. Allegheny Ave.  
Philadelphia, PA 19134  
(215) 739-1600  
info@impactservices.org  
[www.impactservices.org](http://www.impactservices.org)

*Services: Housing; Workforce Development;  
Re-entry; Community Development; Loan  
Fund (Business Loans; Rental Improvement  
Fund; Landlord Working Capital)*

## MICRO-GRANTS RECIPIENTS

### FIRST STEP STAFFING

1952 E. Allegheny Ave.  
Suite 500  
Philadelphia, PA 19134  
(215) 333-3349  
[www.firststepstaffing.com](http://www.firststepstaffing.com)

*Services: Coaching and  
Support; Reentry Services*

## DISTRICT 25

## HOSPITAL(S)

### ST. CHRISTOPHER'S HOSPITAL FOR CHILDREN

3601 A St.  
Philadelphia, PA 19134  
(215) 427-5000

### TEMPLE UNIVERSITY HOSPITAL - MAIN CAMPUS

3401 N. Broad St.  
Philadelphia, PA 19140  
(215) 707-2000

### SHRINERS HOSPITALS FOR CHILDREN

3551 N. Broad St.  
Philadelphia, PA 19140  
(215) 430-4079

## PARKS & RECREATION

12th and Cambria Playground  
Ramonita Negron Rivera Recreation  
and Community Center  
Sergeant John J McVeigh  
Recreation Center  
John (Steve) Schmidt Playground  
Hunting Park  
Feltonville Recreation Center  
Mann Older Adult Center  
Jose Manuel Collazo Park  
Gerald J Maguire Playground  
Corporal George J Reed Jr  
Memorial Playground



## HOUSING

### LUTHERAN SETTLEMENT HOUSE— JANE ADDAMS PLACE

1007 W. Lehigh Ave.  
Philadelphia, PA 19133  
(215) 387-2587, Ext. 2131  
Emergency Homeless Shelter  
[https://www.lutheransettlement.org/  
lsh-services/homeless-services](https://www.lutheransettlement.org/lsh-services/homeless-services)

## NEIGHBORHOOD RESOURCES

### HUNTING PARK NAC

3760 N. Delhi St.  
Philadelphia, PA 19140  
(215) 225-5560  
<http://www.huntingparknac.org>

### HACE: CENTRAL OFFICE

167 W. Allegheny Ave.  
Philadelphia, PA 19140  
(215) 426-8025  
<https://www.hacecdc.org>

*Services: Housing Counseling; Credit Academy; Neighborhood Energy Center; Neighborhood Advisory Committee; Registered Community Organization; Livability Academy; Network of Care Program; Affordable Rental Housing; Main Street Program; Corridor Cleaning Program*

### CONGRESO DE LATINOS UNIDOS

216 W. Somerset St.  
Philadelphia, PA 19133  
(215) 763-8870  
<https://www.congreso.net>

### ESPERANZA

4261 N. 5<sup>TH</sup> St.  
Philadelphia, PA 19140  
(215) 324-0746  
<https://www.esperanza.us>

*Education, Community Economic Development, Social Change (Immigration Legal Services, Youth Leadership), Arts & Culture*

## EMPLOYMENT

Career Link (North)  
4261 N. 5th St.  
Philadelphia, PA 19140  
(215) 967-9711  
<https://www.pacareerlinkphl.org>

## EDUCATION

### CONGRESO DE LATINOS UNIDOS

216 W. Somerset St.  
Philadelphia, PA 19133  
(215) 763-8870  
[www.congreso.net](http://www.congreso.net)

*Adult Basic Education, GED, or English as a Second Language, Computer skill classes.*

### CAMELOT ACADEMY EAST

4224 N. Front St.  
Philadelphia, PA 19140  
(215) 335-4764

*AEDY Transition Programs that serve students 6th to 12th grade*

### ONE BRIGHT RAY – FAIRHILL

2820 N. 4<sup>TH</sup> St.  
Philadelphia, PA 19133  
(215) 423-1776

*Accelerated High School Programs.  
Ages 15-21. 2+ years behind*

### YESPHILLY

2709 N. Broad St., 4<sup>TH</sup> Floor  
Philadelphia, PA 19132  
(215) 764-0340

*Accelerated High School Programs.  
Ages 15-21. 2+ years behind*

## COMMUNITY EXPANSION GRANT RECIPIENTS (CEG)

### TIMOTEO SPORTS

1300 W. Hunting Park Ave.  
Philadelphia, PA 19140  
(215) 470-8406  
<https://timoteosports.org>

*Services: Youth Programs—Flag Football; Basketball; Volleyball; Summer Camp employs 16–17 year olds and serves 10–15 year olds*

## THE LEHIGH BUILDING

152 W. Lehigh Ave.  
Philadelphia, PA 19133  
**SOMERSET COMMUNITY CENTER &**  
141 W. Somerset St.  
Philadelphia, PA 19133

## LIGHTHOUSE SPORTS COMPLEX

101 E. Erie Ave.  
Philadelphia, PA 19134  
(215) 425-7800  
[www.lighthouse1893.org](http://www.lighthouse1893.org)

*Services: Early Education; Youth Development and Programs; Community Development*

## MICRO-GRANTS RECIPIENTS

Klean Kensington

## DISTRICT 26

615 E. Girard Ave.  
Philadelphia, PA 19125  
(215) 686-3260  
[@PPD26Dist](mailto:PPD26Dist)

### NEIGHBORHOODS:

Fishtown  
Kensington  
(Old, East, and West)  
Norris Square

## HOSPITAL(S)

### GIRARD MEDICAL CENTER

8<sup>TH</sup> St. & Girard Ave.  
Philadelphia, PA 19122  
(215) 787-2000

### TEMPLE EPISCOPAL

100 E. Lehigh Ave.  
Philadelphia, PA 19125  
(215) 707-1200

### KENSINGTON HOSPITAL

136 W. Diamond St.  
Philadelphia, PA 19122  
(215) 426-8100  
<https://www.kensingtonhospital.org>

**PARKS & RECREATION**

Fishtown Recreation Center  
 Narcissa S Cruz Recreation Center  
 Dan Shissler Recreation Center  
 Frederick Cione Playground  
 8th and Diamond Playground  
 Marie Dendy Recreation Center  
 Hancock Playground  
 Waterloo Playground  
 Michael J Towe Playground  
 Frank S Nelson Jr Memorial  
 Recreation Center  
 Black Coyle and McBride Playground  
 Tip Top Playground  
 Dave Dougherty (Hetzell) Field  
 Hagert Street Playground  
 3rd and Norris Playground  
 Thomas Hart Park

**POLICE ATHLETIC LEAGUE (PAL)** <https://phillypal.org/locations>**26TH DISTRICT PAL CENTER**

2330 Tucker St.  
 Philadelphia, PA 19125  
 (215) 291-9000

**NEIGHBORHOOD RESOURCES****SOUTH KENSINGTON COMMUNITY PARTNERS, INC.**

227 W. Thompson St. Unit A  
 Philadelphia, PA 19122  
 (215) 427-3463  
<http://www.southkensingtoncommunity.org/>

**ASOCIACIÓN PUERTORRIQUEÑOS EN MARCHA (APM)**

1900 N. 9<sup>TH</sup> St.  
 Philadelphia, PA 19122  
 (267) 296-7200  
<https://apmphila.org/>  
[info@apmphila.org](mailto:info@apmphila.org)

*Services: Community & Economic Development; Family & Children Services; Health Services*

**NORRIS SQUARE COMMUNITY ALLIANCE**

174 Diamond St.  
 Philadelphia, PA 19122  
 (215) 426-8734  
<https://www.nscaphila.org/>

*Services: Neighborhood Development; Youth & Family Services; Early Learning*

**EDUCATION****LIGOURI ACADEMY FORTIS**

2332 E. Lehigh Ave.  
 Philadelphia, PA 19125  
 (267) 571-1952

*Computer-based Learning Instructional Model. Accelerated High School Programs. Ages 15-21. 2+ years behind*

**TARGETED COMMUNITY INVESTMENT GRANT (TCIG) GRANT RECIPIENTS****MUSICORE**

2051 E. Cumberland St,  
 Philadelphia, PA 19125  
 (215) 302-9633  
<https://rocktothefuture.org/programs/musicoreafterschool/>

*Services: MusiCore After School and Summer Programs for grades 6 - 12*

**FRIDAY NIGHT LIGHTS SOCCER AND TEEN SUMMER ENGAGEMENT INITIATIVE**

Community Center at Visitation,  
 2646 Kensington Ave.  
 Philadelphia, PA 19125  
 (267) 536-2717  
[KENSINGTONSOCCERCLUB@GMAIL.COM](mailto:KENSINGTONSOCCERCLUB@GMAIL.COM)  
[www.kensingtonsoccer.org/FNL](http://www.kensingtonsoccer.org/FNL)

*Services: Youth Summer Program*

**COMMUNITY EXPANSION GRANT RECIPIENTS (CEG)****NORRIS SQUARE COMMUNITY ALLIANCE**

174 Diamond St.  
 Philadelphia, PA 19122  
 (215) 426-8734  
[www.nscaphila.org](http://www.nscaphila.org)

*Services: Early Education; Youth & Family; Neighborhood Development; English Classes; Computer Classes;*

**MICRO-GRANTS RECIPIENTS****SHOOTERS: NARRATIVE SHIFT**

1080 N. Delaware Ave.  
 Philadelphia, PA 19025  
[info@shooters-ns.org](mailto:info@shooters-ns.org)  
<https://shooters-ns.org/>  
[www.ming-media.com/](http://www.ming-media.com/)

# NORTHEAST

*Northeast Division Inspector:*  
POLICE.INSP\_NEPD@phila.gov

## DISTRICT 2

### *District 2 and 15*

2831 Levick St.  
Philadelphia, PA 19149  
(215) 686-3150  
@PPD02Dist  
@PPD15Dist  
**NEIGHBORHOODS:**  
Fox Chase (2<sup>nd</sup>)  
Lawncrest (2<sup>nd</sup>)  
Oxford Circle (2<sup>nd</sup>)  
Rhawnhurst (2<sup>nd</sup>)  
Bridesburg (15<sup>th</sup>)  
Frankford (15<sup>th</sup>)  
Mayfair (15<sup>th</sup>)  
Tacony (15<sup>th</sup>)  
Wissinoming (15<sup>TH</sup>)

## HOSPITAL(S)

### **FOX CHASE CANCER CENTER**

333 Cottman Ave.  
Philadelphia, PA 19111  
(215) 728-6900  
www.foxchase.org

*Specialty: Cancer*

### **KINDRED HOSPITAL PHILADELPHIA**

6129 Palmetto St.  
Philadelphia, PA 19111  
(215) 722-8555

*Long-term Acute Care*

### **TEMPLE UNIVERSITY HOSPITAL —JEANES CAMPUS**

7600 Central Ave.  
Philadelphia, PA 19111  
(215) 728-2000

## TARGETED COMMUNITY INVESTMENT GRANT (TCIG) GRANT RECIPIENTS

### **AMERICAN NEIGHBORHOOD MOVIE NIGHTS AND KUNG FU LEARNING MUSEUM**

7345-7347 Oxford Ave.  
Philadelphia, PA 19111  
(267) 6660018  
https://usaacm.org

## DISTRICT 15

## HOSPITAL(S)

### **ARIA HEALTH FRANKFORD CAMPUS**

4900 Frankford Ave.  
Philadelphia, PA 19124  
(215) 831-2000

### **FRIENDS HOSPITAL**

4641 Roosevelt Blvd.  
Philadelphia, PA 19124  
(215) 831-4600  
https://friendshospital.com

*Behavioral Health*

## PARKS & RECREATION

Bridesburg Recreation Center  
Carmella A DiTizio Playground  
American Legion Playground  
Private Alfred J Simpson  
Memorial Recreation Center  
Frank JG Dorsey Memorial Playground  
Joseph C McIlvain Playground  
Franklin Delano Roosevelt Playground  
Joseph F Vogt Playground  
Disston Recreation Center  
Lower Mayfair Playground  
Charles A Russo Playground  
Senator William Vincent Mullin Playground  
Holmesburg Recreation Center  
Mayfair Recreation Center  
William (Billy) Gambrel Playground  
Wissinoming Park  
Victor J Moss Memorial Field  
Lincoln Indoor Pool  
Joseph Deni Recreation Center  
Wilmot Park

## POLICE ATHLETIC LEAGUE (PAL) <https://phillypal.org/locations>

### **TACONY PAL CENTER**

4401 Aldine St.  
Philadelphia, PA 19136  
(215) 335-4656

## NEIGHBORHOOD RESOURCES

### **AFFORDABLE HOUSING CENTERS OF PA: NORTHEAST OFFICE**

6325 Frankford Ave. Unit D  
Philadelphia, PA 19135  
(215) 624-0221  
https://www.ahcopa.org/

*HUD-Certified, Non-Profit Housing  
Counseling Agency with programs for First  
Time Homebuyer Education, Foreclosure  
Prevention, and Rental Eviction Assistance*

### **HACE: FRANKFORD OFFICE**

4907 Frankford Ave.  
Philadelphia, PA 19124  
(215) 437-7867  
www.hacecdc.org

*Programs/Services: Housing Counseling;  
Credit Academy; Neighborhood  
Energy Center; Neighborhood Advisory  
Committee; Registered Community  
Organization; Livability Academy;  
Network of Care Program; Affordable  
Rental Housing; Main Street Program;  
Corridor Cleaning Program*

### **FRANKFORD COMMUNITY DEVELOPMENT CORPORATION (CDC)**

4667- 69 Paul St.  
Philadelphia, PA 19124  
(215) 743-6580  
https://frankfordcdc.org/

*Services: Housing & Zoning;  
Business; Community Development;  
and Workforce Development*

**EDUCATION****EL CENTRO DE ESTUDIANTES**

4290 Penn St.  
Philadelphia, PA 19124  
(215) 687-1172

*Accelerated High School Programs.  
Ages 15-21. 2+ years behind*

**EXCEL ACADEMY SOUTH**

4641 Roosevelt Blvd.  
Philadelphia, PA 19124  
(215) 904-6254

*Accelerated High School Programs.  
Ages 15-21. 2+ years behind*

**EL CENTRO DE ESTUDIANTES**

4290 Penn St.  
Philadelphia, PA 19124  
(215) 687-1172

*Accelerated High School Programs.  
Ages 15-21. 2+ years behind*

**TARGETED COMMUNITY INVESTMENT GRANT (TCIG) GRANT RECIPIENTS**

P.U.S.H Through The Wire, Circle  
Of Dreams, O.M.U.N.I.Q.U.E  
4704 Leiper St.  
Philadelphia, PA 19124

(215) 960-5066

#YouGoodMan?:  
Men's Wellness Group  
(267) 844-8775

**DISTRICT 7**

1701 Bowler St.  
Philadelphia, PA 19115  
(215) 686-3070  
@PPD07Dist

**NEIGHBORHOODS:**

Bustleton  
Pennypack Park  
Somerton

**HOSPITAL(S)****ANGELA JANE PAVILION REHABILITATION HOSPITAL**

8410 Roosevelt Blvd.  
Philadelphia, PA 19152  
(215) 708-1200

*Rehabilitation*

**PARKS & RECREATION**

Daniel Boyle Memorial Recreation Center  
George C Pelbano Playground  
Officer Robert Hayes Memorial Playground  
William A Lackman Memorial Playground  
Tomlinson and Gifford Playground  
Pennypack Environmental Center  
Verree and Susquehanna Playground  
Northeast Older Adult Center

**DISTRICT 8**

3100 Red Lion Rd.  
Philadelphia, PA 19114  
(215) 686-3080

@PPD08Dist

**NEIGHBORHOODS:**

Academy Gardens  
Andalusia  
Crestmont Farms  
Byberry  
Holmesburg  
Morrell Park  
Torresdale

**HOSPITAL****ARIA HEALTH TORRESDALE CAMPUS**

10800 Knights Rd.  
Philadelphia, PA 19114  
(215) 612-4000

**NAZARETH HOSPITAL**

2601 Holme Ave.  
Philadelphia, PA 19152  
(215) 335-6000

**PARKS & RECREATION**

James J Ramp Playground  
George Jacobs Playground  
Thomas Holme School Playground  
Thomas Mitchell Playground  
Corporal Jimmy O'Connor  
Memorial Playground

Elizabeth M Picariello Playground  
Michael Palmer Playground  
Eileen Fitzpatrick Playground  
Jim Junod Recreation Center  
Torresdale Recreation Center  
Holme Crispin Park  
Frankford and Solly Playground  
Frank McArdle Memorial Recreation Center  
Torresdale and Enfield Fields

**CORRECTIONAL FACILITIES**

[phila.gov/departments/philadelphia-department-of-prisons](http://phila.gov/departments/philadelphia-department-of-prisons)

**DETENTION CENTER**

8201 State Rd.  
Philadelphia, PA 19136  
(215) 685-8436

**ALTERNATIVE SPECIAL DETENTION CENTRAL UNIT**

8101 State Rd.  
Philadelphia, PA 19136  
(215) 685-8730

**HOLMESBURG PRISON**

8215 Torresdale Ave,  
Philadelphia, PA 19136  
(215) 685-8574

**CURRAN-FROMHOLD CORRECTIONAL FACILITY**

7901 State Rd.  
Philadelphia, PA 19136  
(215) 685-7843

**PENNSYLVANIA BOARD OF PAROLE PROBATION OFFICE**

8001 State Rd.  
Philadelphia, PA 19136  
(215) 338-8688

**PHILADELPHIA INDUSTRIAL CORRECTIONAL CENTER**

8303 State Rd.  
Philadelphia, PA 19136  
(215) 685-7104

**RIVERSIDE CORRECTIONAL FACILITY**

8151 State Rd.  
Philadelphia, PA 19136  
(215) 685-6900

# NORTHWEST

*Northwest Division Inspector:*  
POLICE.INSP\_NWPD@phila.gov

## DISTRICT 5

6666 Ridge Ave.  
Philadelphia, PA 19128  
(215) 686-3050  
@PPD05Dist

### NEIGHBORHOODS:

Andorra  
Roxborough  
Manayunk  
Wissahickon

## HOSPITAL(S)

### ROXBOROUGH MEMORIAL HOSPITAL

5800 Ridge Ave.  
Philadelphia, PA 19128  
(215) 483-9900

### FAIRMOUNT BEHAVIORAL HEALTH SYSTEMS

561 Fairthorne Ave.  
Philadelphia, PA 19128  
(215) 487-4100

*Behavioral Health*

## PARKS & RECREATION

W Freeland Kendrick Recreation Center  
Hillside Recreation Center  
Samuel F Houston Playground  
Venice Island Performing Arts  
and Recreation Center  
David P Montgomery Field  
Wissahickon Environmental Center  
Wissahickon Neighbors Playground

## NEIGHBORHOOD RESOURCES

### INTERCOMMUNITY ACTION (SENIOR CENTER)

403 Rector St.  
Philadelphia, PA 19128  
(215) 487-1750

## TARGETED COMMUNITY INVESTMENT GRANT (TCIG) GRANT RECIPIENTS

### 2022 SUMMER PROGRAM AT C.B. COMMUNITY SCHOOLS

4101 Freeland Ave.  
Philadelphia, PA 19128  
(267) 766-3130 Ext. 2008

## COMMUNITY EXPANSION GRANT (CEG) AND MICRO- GRANT RECIPIENT

### NEW LEASH ON LIFE

924 Bryn Mawr Ave.  
Philadelphia, PA 19072  
(484) 432-1288  
<https://newleashonlife.org/philly>

*Non-profit prison dog-training  
program. Reentry Services.*

## DISTRICT 14

43 W. Haines St.  
Philadelphia, PA 19144  
(215) 686-3140  
@PPD14Dist

### NEIGHBORHOODS:

Cedarbrook Chestnut Hill  
Germantown  
Mount Airy  
(East and West)  
West Oak Lane

## HOSPITAL(S)

### CHESTNUT HILL HOSPITAL

8835 Germantown Ave.  
Philadelphia, PA 19118  
(215) 248-8200

### GERMANTOWN COMMUNITY HEALTH CENTER

1 Penn Blvd.  
Philadelphia, PA 19144  
(215) 951-8000

*Behavioral Health*

## PARKS & RECREATION

Awbury Park and Recreation Center  
Charles M Finley Playground  
Wister Playground  
Waterview Recreation Center  
Daniel E. Rumph II Recreation Center

Mount Airy Playground  
Pleasant Playground  
William B Simons Recreation Center  
Water Tower Recreation Center  
Dorothy Emanuel Recreation Center  
Lonnie Young Recreation Center  
of East Germantown  
Morton Playground  
West Oak Lane Senior Center

## POLICE ATHLETIC LEAGUE (PAL)

### PALEY PAL CENTER

5330 Germantown Ave.  
Philadelphia, PA 19144  
(215) 844-8417

## NEIGHBORHOOD RESOURCES

### CENTER IN THE PARK

5818 Germantown Ave.  
Philadelphia, PA 19144  
(215) 848-7722  
<https://centerintheparkphila.org>

*Services: Older Adult Services; In-Home  
Support Program; Neighborhood Energy  
Center (NEC); Housing Counseling*

### MT. AIRY CDC

6703 Germantown Ave. Suite 200,  
Philadelphia, PA 19119  
(215) 844-6021  
<https://mtairycdc.org>

*Services: Housing Counseling; Community  
Programs; Community Events; Business  
Services; Real Estate & Infrastructure*

### GERMANTOWN UNITED CDC

5320 Germantown Ave.  
Philadelphia, PA 19144  
(215) 856-4303

### GERMANTOWN AVE CRISIS MINISTRY

35 W. Cheltenham Ave.  
Philadelphia, PA 19144  
(215) 843-2340  
[www.crisisministry.org](http://www.crisisministry.org)

*Services: Financial Assistance; Housing  
Assistance; Food Cupboard; Referrals;  
Neighborhood Energy Center (NEC)*

## JUVENILE JUSTICE CENTER OF PHILADELPHIA

100 W. Coulter St.  
Philadelphia, PA 19144  
(215) 849-2112  
<https://juvenilejustice.org>

## WEST OAK LANE CDC

1624 Wadsworth Ave.  
Philadelphia, PA 19150  
(215) 224-8339  
[www.westoaklanecdc.org](http://www.westoaklanecdc.org)

## HOUSING

### COVENANT HOUSE

31 E. Armat St.  
Philadelphia, PA 19144  
(215) 951-5411  
[www.covenanthouse.org](http://www.covenanthouse.org)  
*Covenant House Pennsylvania (CHP) is a program for young people in desperate situations age 21 and under.*

*Services: Continuum of Care; Advocacy; Strategy; Meals; Educational assistance; Case management; Clean bed; Transportation assistance; Recreation; On-site medical care; Life skills; Trafficking survivor services; Mental health care; Vocational assistance; Substance-use counseling; Job readiness; Transitional Living; Legal Services*

### FAMILY PROMISE OF PHILADELPHIA

*formerly Philadelphia Interfaith Hospitality Network*  
7047 Germantown Ave.,  
Philadelphia, PA 19144  
(215) 247-4663  
[www.familypromisephil.org](http://www.familypromisephil.org)

*Services: Prevention & Diversion Services; Emergency Housing & Relocation; Innovative Housing Solutions; Community Network; Ongoing Support; Children & Youth*

## WHOSOEVER GOSPEL MISSION SHELTER, FOOD, CLOTHING, EDUCATION, COUNSELING, REHABILITATION

101 E. Cheltenham Ave.  
Philadelphia, PA 19144  
(215) 438-3094  
[www.whosoevergospel.org/wp](http://www.whosoevergospel.org/wp)

*Food, shelter, and clothing; individual and group counseling; drug and alcohol support groups, testing and treatment; Job Readiness Training; Daily Teaching, Seminars, and Workshops*

## EMPLOYMENT

### CAREER LINK (NORTHWEST)

5847 Germantown Ave.  
Philadelphia, PA 19144  
(215) 987-6503  
[www.pacareerlinkphl.org](http://www.pacareerlinkphl.org)

## EDUCATION

### OMBUDSMAN NORTHWEST ACCELERATED

2111 Eastburn St.  
Philadelphia, PA 19138  
(215) 924-8950

### TARGETED COMMUNITY INVESTMENT GRANT (TCIG) GRANT RECIPIENTS

### REVIVING THE VILLAGE SUMMER SOCIAL EXPERIENCE

237 E. Upsal St.  
Philadelphia, PA 19119  
(215) 260-2814

### FIRE YOUTH DEVELOPMENT PROGRAM

50 E. Clapier St.  
Philadelphia, PA 19144  
(215) 813-1875

### BOUT MINE - I MATTER GUN VIOLENCE PREVENTION PROJECT

7263 Walnut Ln.  
Philadelphia, PA 19138  
(215) 221-2435

## SUMMER FAMILY FUN DAYS

5501 Germantown Ave. - Market Square  
Philadelphia, PA 19144  
(917) 912-6483

### PHILLY REQUIEM "Y2C-YEAR 2 OF THE COVID PANDEMIC" "PANDEMIC PRAYER" PUBLIC INTERACTIVE MEMORIAL MUSIC & SPOKEN WORD PERFORMANCE

7812 Michener Ave.  
Philadelphia, PA 19150  
(267) 235-7310

### THE SNAP CO. EXPERIENCE ARTS OUTREACH

7031 Boyer St.  
Philadelphia, PA 19119  
(215) 327-0661

### COMMUNITY EXPANSION GRANT (CEG) RECIPIENTS

#### MEN WHO CARE OF GERMANTOWN

180 E. Tulpehocken St.  
Philadelphia, PA 19144  
(267) 335-4786  
[www.menwhocareofgermantown.org](http://www.menwhocareofgermantown.org)

*Services: Mentorship; Food Distribution; and Scholarship Fund*

### BLACK MUSLIM MEN UNITED FOR A BETTER PHILADELPHIA

414 E. Penn St.  
Philadelphia, PA 19144  
(267) 979-2162

### EVERY MURDER IS REAL (EMIR) PROVIDES CRISIS RESPONSE & VICTIM SERVICES

59 E. Haines St.  
Philadelphia, PA 19144  
(215) 848-4068  
<https://emirphilly.org>

*Services: Education, Advocacy, and Support for Restorative Justice*

**MICRO-GRANT RECIPIENTS****F.I.R.E. FREE INSPIRATION  
REACHING EVERYONE**

135 E. Pomona St.  
Philadelphia, PA 19144

**WOMEN IN DIALOGUE**

33 Maplewood Mall,  
Philadelphia, PA 19144

**DISTRICT 35**

5960 N. Broad St.  
Philadelphia, PA 19141  
@PPD35Dist

**NEIGHBORHOODS:**

East Oak Lane  
Ogontz  
Olney  
Logan

**HOSPITAL(S)****EINSTEIN MEDICAL CENTER  
- PHILADELPHIA\***

5501 Old York Rd,  
Philadelphia, PA 19141  
(215) 456-7890

*Trauma Specialized Hospital*

**MOSS REHABILITATION HOSPITAL**

1200 W. Tabor Road,  
Philadelphia, PA 19141  
(215) 456-9800

*Rehabilitation*

**PARKS & RECREATION**

Stenton Park  
John L Barrett Playground  
Charles J Ziehler Playground  
A Albert Cherashore Playground  
Belfield Recreation Center  
Olney Recreation Center  
Helen G Sturgis Playground  
Morris Estate Cultural Center  
Fisher Park  
Hammond and Nedro Fields

**NEIGHBORHOOD RESOURCES****GREATER PHILADELPHIA ASIAN  
SOCIAL SERVICE CENTER (GPASS)**

4943 N. 5th St.  
Philadelphia, PA 19120  
(215) 456-1662

**NORTHWEST COUNSELING SERVICE**

6521 N. Broad St.  
Philadelphia, PA 19126  
(215) 324-7500

**TARGETED COMMUNITY  
INVESTMENT GRANT (TCIG)  
GRANT RECIPIENTS****SUMMER WORKREADY  
AND COMMUNITY EVENTS  
AT HAND2PAW**

5757 N. 5th St.  
Philadelphia, PA 19120  
(215) 681-8874

**TRAUMA INFORMED  
MINDFULNESS MEDITATION**

4931 N. Camac St.  
Philadelphia, PA 19141  
(267) 687-9629

**COMMUNITY EXPANSION  
GRANT (CEG) RECIPIENTS****UPLIFT WORKFORCE SOLUTIONS**

8417 N.8th St.  
Philadelphia, PA 19123  
(718) 344-1553

**MICRO-GRANT RECIPIENTS****TRAPDOOR INC.**

Philadelphia, PA 19120

**DISTRICT 39**

2201 W. Hunting Park Ave.  
Philadelphia, PA 19140  
(215) 686-3390

@PPD39Dist

**NEIGHBORHOODS:**

Allegheny West  
East Falls  
Germantown  
Nicetown-Tioga

**PARKS & RECREATION**

James Allen Shuler Playground  
Jerome Brown Playground  
Gustine Recreation Center  
Harry S McDevitt Playground  
Happy Hollow Recreation Center  
Heritage Park Playground  
Fernhill Park  
29th and Chalmers Playground  
22nd and Ontario Park

**NEIGHBORHOOD RESOURCES****NICETOWN CDC****\*CEG RECIPIENT**

4414 Germantown Ave. 3rd Floor  
Philadelphia, PA 19140  
(215) 324-9772

Info@nicetowncdc.org  
<https://nicetowncdc.org>

*Services/Programs: Nicetown CDC  
Neighborhood Advisory Committee  
(NTCDC/NAC); Support Services; Land  
Care; Arts & Culture; The Nice Space  
Empowerment Program; Neighborhood  
Energy Center; Summer Youth Worker  
Program; Corridor Revitalization &  
Economic Development; Affordable Housing  
& Housing Preservation; The Winghocking  
Street Project; Homeowner's Club; Mixed  
Use Development; The Sport Court; Rebuild*

**TIOGA UNITED NAC**

1539 W. Venango St.  
Philadelphia, PA 19140  
(215) 639-6912  
Tiogaunited@hotmail.com  
[www.tu-nac.org](http://www.tu-nac.org)

*Services/Programs: Housing  
Counseling and Assistance;  
Neighborhood Revitalization*

**HOUSING****GAUDENZIA  
REENTRY HOUSE PREVENTION,  
RECOVERY SUPPORT  
SERVICES, HOUSING**

2100 W. Venango St.  
Philadelphia, PA 19140  
(215) 849-7200  
[www.gaudenzia.org](http://www.gaudenzia.org)

Multiple Locations throughout City

\* See website

## TARGETED COMMUNITY INVESTMENT GRANT (TCIG) GRANT RECIPIENTS

### KING'S UNIVERSITY

3701 N. 19th St.  
Philadelphia, PA 19140  
(267) 235-8953

### POSITIVE MOVEMENT DRUMLINE

Philadelphia, PA 19140  
(267) 225-3282  
[www.whourockinwit.org](http://www.whourockinwit.org)

### ROLL ROLL WITH RESPECT

(404) 587-9020

### COMMUNITY EXPANSION GRANT (CEG) RECIPIENTS NICETOWN CDC

4414 Germantown Ave. 3rd Floor  
Philadelphia, PA 19140  
(215) 324-9772  
<https://nicetowncdc.org>

### MERCY NEIGHBORHOOD MINISTRIES

1939 W. Venango St.  
Philadelphia, PA 19140  
<https://mercyneighbors.org>  
Instagram: @mercyneighbors

*Services: Early Education & Youth Development; Adult Education*

### MICRO-GRANT RECIPIENTS SISTERS RETURNING HOME

302 W. School House Ln.  
Philadelphia, PA 19144  
(215) 900-4202  
Instagram: @sistersreturninghome  
<https://sistersreturninghome.org>

*Services: Female Reentry*

### PAR-RECYCLE WORKS

2024 W. Hunting Park Ave.  
Philadelphia, PA 19140  
(267) 335-5455  
<https://home.par-recycleworks.org>

## SOUTHWEST

*Southwest Division Inspector:*  
[POLICE.INSP\\_SWPD@phila.gov](mailto:POLICE.INSP_SWPD@phila.gov)

### DISTRICT 12

6448 Woodland Ave.  
Philadelphia, PA 19142  
(215) 686-3120  
@PPD12Dist  
**NEIGHBORHOODS:**  
Eastwick  
Elmwood  
Kingsessing

### PARKS & RECREATION

William A Cibotti Recreation Center  
J Francis Finnegan Playground  
John J McCreesh Sr Playground  
Kingsessing Recreation Center  
Francis J Myers Recreation Center  
Eastwick Regional Playground  
Russell DeRitis Playground  
Robert Wilson III Park  
Whitby Avenue Playground

### POLICE ATHLETIC LEAGUE (PAL)

**SOUTHWEST**  
5900 Elmwood Ave.  
Philadelphia, PA 19143  
(215) 727-8181  
<https://phillypal.org/locations/>

### NEIGHBORHOOD RESOURCES

**SOUTHWEST CDC**  
6328 Paschall Ave.  
Philadelphia, PA 19142  
(215) 729-0800  
<https://southwestcdc.org/>

*Services: Employment and Workforce Development; After School Program; Housing Counseling; Neighborhood Energy Center; Economic Development; Neighborhood Advisory Committee*

### EDUCATION

#### ONE BRIGHT RAY – ELMWOOD

6404 Elmwood Ave.  
Philadelphia, PA 19142  
(215) 488-1177

*Accelerated High School Programs.  
Ages 15-21. 2+ years behind*

### TARGETED COMMUNITY INVESTMENT GRANT (TCIG) GRANT RECIPIENTS

#### PHILLY KIDS PLAY

(267) 977-6090

#### HEALING CIRCLES

(267) 401-2990

#### MENTAL HEALTH YOUTH SUMMER SERIES

(215) 416-9207

### COMMUNITY EXPANSION GRANT RECIPIENTS (CEG)

#### EDUCATORS 4 EDUCATION

[info@educators4education.org](mailto:info@educators4education.org)  
(215) 792-3171  
[www.educators4education.org](http://www.educators4education.org)

*Services: Professional Development; Parent Education/Involvement Workshops; In-School Services; Youth Development Programs; Technical Assistance; Event Planning for nonprofits, schools, and school-based programming*

#### AFRICAN FAMILY HEALTH ORGANIZATION

2420 S. 54<sup>TH</sup> St., 2<sup>ND</sup> Floor  
Philadelphia, PA 19143  
<https://afaho.org/>

#### Main Number:

(215) 546-1232

#### French & Yoruba

(215) 820-6025

#### Bambara, Mandingo & French

(215) 827-7042

#### Arabic

(215) 820-7613

#### Swahili & Kinyarwanda

(215) 820-5379



**Akan/Twi & English**

(267) 366-2533

*Services: Health and Human Services;  
Education; Language Translation  
& Interpretation; Nutrition;  
After-school programs*

**MICRO-GRANTS RECIPIENTS****HEALING COMMUNITIES PA**

2821 Island Ave., Suite 102C  
Philadelphia, PA 19153  
www.healingcommunitiesusa.com

**DISTRICT 16**

3900 Lancaster Ave.  
Philadelphia, PA 19104  
(215) 686-3160

@PPD16Dist

**NEIGHBORHOODS:**

Mantua  
Mill Creek  
Powelton

**HOSPITAL(S)****PENN PRESBYTERIAN  
MEDICAL CENTER**

51 N. 39<sup>TH</sup> St.  
Philadelphia, PA 19104  
(215) 662-8000

**KIRKBRIDE CENTER**

111 N. 49<sup>TH</sup> St.  
Philadelphia, PA 19139  
(215) 471-2600  
Behavioral health

**PARKS & RECREATION**

Tiffany Fletcher Recreation Center  
Miles Mack Playground  
James L Wright Playground  
John A Lee Cultural Center  
West Mill Creek  
Carousel House Recreation Center  
Norman (Butch) Ellis Playground  
Clayborne and Lewis Playground  
Kelly Pool  
Ford Road Playground  
33rd and Wallace Playground

**NEIGHBORHOOD RESOURCES****WE NEVER SAY NEVER**

4427 Lancaster Ave.  
Philadelphia, PA 19104  
(215) 452-0440

**MT. VERNON MANOR CDC**

631 N. 39<sup>TH</sup> St.  
Philadelphia, PA 19104  
(215) 475-9492  
www.mvmcdc.org

*Services: Affordable Housing;  
Community Organizing; Environmental  
Justice; Public Safety; Neighborhood  
Advisory Committee (NAC) Resident  
Services; Workforce Development*

**WONDERSPRING  
POWELTON VILLAGE**

3939 Warren St.  
Philadelphia, PA 19104  
(215) 382-2499  
https://wonderspring.org/

*Services: Early Education  
(6 weeks to 5 yrs old)*

**HOUSING****GAUDENZIA  
ADDICTION TREATMENT &  
RECOVERY SERVICES**

Multiple Locations throughout City  
(215) 849-7200  
www.gaudenzia.org

*Services: Adolescent Services; Adolescent  
SUD Treatment; Adult Services; Adult  
SUD Treatment; Assessment Services;  
Co-Occurring Disorders Treatment;  
Crisis Stabilization; Culture-Informed  
Care; Detoxification/Withdrawal  
Management; Gender-Responsive Care;  
Group Counseling; Halfway House(s);  
High-Intensity Residential SUD Treatment;  
Individual Counseling; Intensive Outpatient  
(IOP); Long-Term Residential Housing;  
Low-Intensity Residential SUD  
Treatment; Medically Complex Clients;  
Medication-Assisted Treatment (MAT);  
Men's Programs; Outpatient (OP) Services;  
Partial Hospitalization Program (PHP);  
Pregnant and Parenting Women's Program;  
Trauma-Informed Care; Women's Programs*

**HOPE PHL (FORMERLY PEC & YSI)**

325 N. 39<sup>TH</sup> Street  
Philadelphia PA 19104  
(215) 787-0633 or (800) 371-SAFE  
www.hopephl.org

*Services: HopePHL offers several Youth  
Emergency Services to assist youth ages  
9-17 who are housing insecure, or who  
face a risk of child abuse or neglect.*

**EMPLOYMENT****CAREER LINK (WEST)**

3901 Market St.  
Philadelphia, PA 19104  
(215) 473-3630  
www.pacareerlinkphl.org

**TARGETED COMMUNITY  
INVESTMENT GRANT (TCIG)  
GRANT RECIPIENTS****ROSES CLUBHOUSE PROGRAMMING  
HELD AT THE LUCIEN BLACKWELL  
COMMUNITY CENTER**

761 N. 47<sup>TH</sup> St.  
Philadelphia, PA 19139  
(267) 237-7898

**A NEW DAWN INCORPORATED**

49<sup>TH</sup> and Aspen St.  
Philadelphia, PA 19139  
(267) 237-7898  
support@anewdawnincorporated.org  
Instagram @ANewDawnIncorporated  
www.anewdawnincorporated.org/

**COMMUNITY EXPANSION  
GRANT RECIPIENTS (CEG)****BEYOND THE BARS**

3500 Lancaster Ave.  
Philadelphia, PA 19104  
(610) 836-2759  
https://beyondthebarsmusic.org/

**MICRO-GRANTS RECIPIENTS****DIMPLEZ 4 DAYZ, INCORPORATED**

3509 Haverford Ave.  
Philadelphia, PA 19104  
(267) 325-5138  
info@dimplez4dayz.org  
www.dimplez4dayz.org  
Instagram:@dimplezz4dayzz

*Youth founded, youth-led 501c3 nonprofit org in Philadelphia that inspires children, youth, and families.*

**DISTRICT 18**

5510 Pine St.  
Philadelphia, PA 19143  
(215) 686-3180  
@PPD18Dist

**NEIGHBORHOODS:**

Cedar Park  
Cobbs Creek  
University City

**HOSPITAL(S)****HOSPITAL OF THE UNIVERSITY OF PENNSYLVANIA**

3400 Spruce St.  
Philadelphia, PA 19104  
(215) 662-4000

**THE CHILDREN'S HOSPITAL OF PHILADELPHIA**

34<sup>TH</sup> St. and Civic Center Blvd.  
Philadelphia, PA 19104  
(215) 590-1000

**HOSPITAL OF THE UNIVERSITY OF PENNSYLVANIA - CEDAR AVENUE**

*Formerly Mercy Philadelphia Hospital*  
501 S. 54<sup>TH</sup> St.  
Philadelphia, PA 19143  
(215) 748-9000

**PHILADELPHIA VA MEDICAL CENTER**

3900 Woodland Ave.  
Philadelphia, PA 19104  
(215) 823-5800

**PARKS & RECREATION**

Howard Sayre Morris Recreation Center  
48<sup>TH</sup> and Woodland Playground  
Albert W. Christy Sr Recreation Center  
Johnny Sample Recreation Center  
Laura Sims Skating Rink  
Cobbs Creek Community  
Environmental Center  
61<sup>ST</sup> and Cobbs Creek Park

**NEIGHBORHOOD RESOURCES****INTERCULTURAL FAMILY SERVICES**

4225 Chestnut St.  
Philadelphia, PA 19104  
(215) 386-1298  
<https://ifsinc.org/>

*Services: Behavioral Health: Outpatient Services, Intensive Behavioral Health Services, Family Based Mental Health, Family Functional Therapy; Community Enrichment – Basic Needs Services; Prevention Services*

**TARGETED COMMUNITY INVESTMENT GRANT (TCIG) GRANT RECIPIENTS****COMMUNITY OF COMPASSION CDC COMMUNITY CENTER (OR COMPASSION CDC) M.A.P.S INITIATIVE ENHANCEMENT**

6150 Cedar Ave.  
Philadelphia, PA 19143  
(267) 767-1216  
[www.communityofcompassioncdc.com](http://www.communityofcompassioncdc.com)

*Services: Mentoring; Academic Enrichment; Parental Support; Supplemental Support & Services*

**INSPIRE: GROUP MENTORING**

(267) 800-6412

**COMMUNITY CARE DAY**

(856) 676-2394

**MICRO-GRANTS RECIPIENTS****MENTOR LEADERS PRODUCE MENTOR LEADERS**

info@mlpml.org  
www.mlpml.org

**REDEMPTION HOUSING INC.**

PO Box 6326, 19139  
<https://redemptionhousing.org/>

*A transformational recovery organization that offers faith-based programming and community support to Philadelphians coming out of incarceration and homelessness, guiding them toward healthy and meaningful lives.*

**DISTRICT 19**

6059 Haverford Ave.  
Philadelphia, PA 19151  
(215) 686-3190  
@PPD18Dist

**NEIGHBORHOODS:**

Haddington  
Overbrook  
Wynnefield

**HOSPITAL(S)****BELMONT CENTER FOR COMPREHENSIVE TREATMENT**

4200 Monument Rd.  
Philadelphia, PA 19131  
(215) 877-2000

**PARKS & RECREATION**

John C Anderson Cultural Center  
William T Granahan Playground  
Charles A Papa Playground  
Conestoga Community Playground  
Ernest L Tustin Recreation Center  
Parkside Evans Recreation Center  
Charles A Baker Playground  
Haddington-Marshall L Shepard  
Sr Recreation Center  
Woodside Park

**POLICE ATHLETIC LEAGUE**

**(PAL)** <https://phillypal.org/locations>

**WYNNEFIELD**

Pinn Memorial Baptist Church  
2251 N. 54<sup>TH</sup> St.  
Philadelphia, PA 19131  
(215) 878-6439

**HADDINGTON**

Salvation Army  
5501 Market St.  
Philadelphia, PA 19139  
(215) 291-9000 Ext. 318

**NEIGHBORHOOD RESOURCES****ANTI-VIOLENCE PARTNERSHIP OF PHILADELPHIA**

4946 Parkside Ave.  
Philadelphia, PA 19131  
(215) 685-0756

**UAC/PARKSIDE ASSOCIATION OF PHILADELPHIA (PAP)**

1719 N. 52<sup>ND</sup> St.  
Philadelphia, PA 19131  
(215) 877-1198  
[www.parksideassociation.org/webapi/website/public](http://www.parksideassociation.org/webapi/website/public)

**UAC/PARKSIDE ASSOCIATION OF PHILADELPHIA (PAP)** supports the West Parkside community. PAP provides job placement, summer youth employment, resume writing, and limited computer training. PAP assists its residents with housing referral service; Neighborhood food bank. A liaison to help negotiate zoning issues, locating and or expanding an area.

**ACHIEVEABILITY**

5901 Market St.  
Philadelphia, PA 19139  
(215) 748-8800  
<https://achieveability.org/>

*ACHIEVEability is a nonprofit working to permanently break the generational cycle of poverty for low-income, single parent and homeless families through higher education, affordable housing, supportive services, community and economic development and accountability.*

**THE ENTERPRISE CENTER**

4548 Market St.  
Philadelphia, PA 19139  
(215) 895-4000  
[info@theenterprisecenter.com](mailto:info@theenterprisecenter.com)  
[www.theenterprisecenter.com](http://www.theenterprisecenter.com)  
Instagram: @TECWestPhilly

*Services: Consulting; M/W/DSBE Certification; Procurement Assistance*

*Community Initiatives: 52nd Street Projects; Neighborhood Advisory Committee (NAC); Resource Hub; Revitalization; Walnut Hill Community Association; Biz on Wheels; Black Holiday Pop-Up; The Grit Studios; Initiative Archive*

**AFFORDABLE HOUSING CENTERS OF PA**

5901 Market St., Suite 104  
Philadelphia, PA 19139  
(215) 648-1728  
<https://www.ahcopa.org>

*HUD-Certified, Non-Profit Housing Counseling Agency with programs for First Time Homebuyer Education, Foreclosure Prevention, and Rental Eviction Assistance*

**TARGETED COMMUNITY INVESTMENT GRANT (TCIG) GRANT RECIPIENTS****POSITIVE CHOICES**

(215) 617-0931

**COMMUNITY HEALTH AND GARDENS, INC**

1701-11 N. 55<sup>TH</sup> St.  
Philadelphia, PA 19131  
(267) 254-8468  
[communityhealthandgardens@gmail.com](mailto:communityhealthandgardens@gmail.com)  
<https://www.facebook.com/CHandGInc>

**CUSTOM TEE'S PRINTHOUSE / POSITIVE PRINTING PROGRAM**

(215) 472-0574

# SOUTH

*South Division Inspector:*  
POLICE.INSP\_SPD@phila.gov

## DISTRICT 1

24<sup>TH</sup> St. and Wolf St.  
Philadelphia, PA 19145  
(215) 686-3010  
@PPD01Dist  
**NEIGHBORHOODS:**  
Grays Ferry  
Girard Estates  
Melrose  
Packer Park  
West Passyunk  
South Philadelphia West

## HOSPITAL(S)

### KINDRED HOSPITAL SOUTH PHILADELPHIA

1930 S. Broad St.  
Philadelphia, PA 19145  
(267) 570-5200

### SAINT AGNES LONG TERM CARE HOSPITAL

1900 S. Broad St.  
Philadelphia, PA 19145  
(215) 339-4100

## NEIGHBORHOOD RESOURCES

### GREATER PHILADELPHIA COMMUNITY ALLIANCE (GPCA) DIXON HOUSE

1920 S. 20<sup>TH</sup> St.  
Philadelphia, PA 19145  
(215) 336-3511

### INTERCULTURAL BEHAVIORAL HEALTH CENTER–SOUTH

2317 S. 23rd St.  
Philadelphia, PA 19145  
(215) 468-4673  
<https://ifsinc.org/>

*Services: Behavioral Health: Outpatient,  
Intensive Behavioral Health, Family  
Based Mental Health, Family Functional  
Therapy; Community Enrichment – Basic  
Needs Services; Prevention Services*

## EMPLOYMENT

### PHILADELPHIA JOB CORPS CENTER

2810 S. 20<sup>TH</sup> St. #12  
Philadelphia, PA 19145  
(800) 733-JOBS

*Youth/Young Adults  
Ages 16-24*

## COMMUNITY EXPANSION GRANT RECIPIENTS (CEG)

### UNITY IN THE COMMUNITY

1920 S. 20<sup>TH</sup> St.  
Philadelphia, PA 19145  
(215) 292-5081  
[www.unityinthecommunity215.com/](http://www.unityinthecommunity215.com/)

## DISTRICT 3

S. 11<sup>TH</sup> St & Wharton St.  
Philadelphia, PA 19147  
(215) 686-3030  
@PPD03Dist

### NEIGHBORHOODS:

Bella Vista  
East Passyunk  
Lower Moyamensing  
South Philadelphia East  
Queens Village  
Pennsport  
Wharton  
Whitman

## HOSPITAL

### THOMAS JEFFERSON UNIVERSITY HOSPITALS METHODIST

2301 S. Broad St.  
Philadelphia, PA 19148  
(215) 952-9000

## PARKS & RECREATION

Nelson M Herron Playground  
and Recreation Center  
Lawrence E. Murphy Recreation Center  
Columbus Square  
Solomon Sacks Playground  
Dr. Nicola Capitolo Playground  
Weccacoe Square  
Walter Palumbo Recreation Center  
Shot Tower Recreation Center  
Hawthorne Cultural Center  
Starr Garden Playground  
Charles T Mitchell Jr (Seeger) Park  
Reverend Edward P Burke Playground  
East Passyunk Community  
Recreation Center  
John Dickinson Square  
Ralph R Rizzo Sr Ice Rink  
South Philadelphia Older Adult Center

## POLICE ATHLETIC LEAGUE (PAL)

### FORD PAL CENTER

631 Snyder Ave.  
Philadelphia, PA 19148  
(215) 336-8750  
<https://phillypal.org/locations/>

## NEIGHBORHOOD RESOURCES

### WHITMAN COUNCIL, INC.

2455 S. 3<sup>RD</sup> St.  
Philadelphia, PA 19148  
(215) 468-4056  
[www.whitmancouncil.com](http://www.whitmancouncil.com)

### PHILADELPHIA SENIOR CENTER ON THE AVENUE OF THE ARTS & PSC-COFFEE CUP

509 S. Broad St.  
Philadelphia, PA 19147  
(215) 546-5879  
[www.newcourtland.org/senior-centers](http://www.newcourtland.org/senior-centers)

### GREATER PHILADELPHIA COMMUNITY ALLIANCE (GPCA) HOUSTON CENTER

2029 S. 8<sup>TH</sup> St.  
Philadelphia, PA 19148  
(215) 468-1645 Ext. 7200  
<https://gpca-phila.org/>

*Services: Community Development;  
Children & Youth Development;  
Adult & Family Development*

**EDUCATION****SOUTH PHILADELPHIA  
HIGH SCHOOL EOP**

2101 S. Broad St.  
Philadelphia, PA 19148  
(215) 400-8400 Option 3

**TARGETED COMMUNITY  
INVESTMENT GRANT (TCIG)  
GRANT RECIPIENTS****GIRLS INC. OF GREATER  
PHILADELPHIA &  
SOUTHERN NEW JERSEY  
PROJECT ACCELERATE**

1901 S. 9<sup>TH</sup> St., Suite 602  
Philadelphia, PA 19148  
(215) 735-7775 Ext. 402  
<https://girlsincpa-nj.org/>

*Girls Inc. equips girls to navigate gender, economic, and social barriers even as we work with them to advocate for change*

**MICRO-GRANTS RECIPIENTS****I'M FREE FEMALES REENTERING  
EMPOWERING EACH OTHER, INC.**

1175 Markkress Rd., Suite 2021  
Cherry Hill, NJ 08034  
<https://www.imfreeonline.org/>

*Serving incarcerated and formerly incarcerated women in the Greater Philadelphia Area*

**DISTRICT 17**

Federal St. & S. 20<sup>TH</sup> St.  
Philadelphia, PA 19146  
(215) 686-3170  
@PPD17Dist

**NEIGHBORHOODS:**

Point Breeze  
Schuylkill  
Southwest Center City

**MEDICAL****GOOD SHEPHERD  
PENN PARTNERS**

1800 Lombard St.  
Philadelphia, PA 19146  
(877) 969-7342  
<https://pennrehab.org/>

*Services: Outpatient and Inpatient Rehabilitation; Long-Term Acute Care*

**PARKS & RECREATION**

Marian Anderson Recreation Center  
A Giuseppe DiSilvestro Playground  
George A Vare Recreation Center  
Donald P Finnegan Recreation Center  
Charles H Chew Jr Playground  
Wharton Square  
Jacob Stinger Park  
William Lanier Park

**POLICE ATHLETIC  
LEAGUE (PAL)****GRAYS FERRY – THE  
SALVATION ARMY**

3225 Reed St.  
Philadelphia, PA 19146  
(215) 291-9000

<https://phillypal.org/locations/District 1>

**TARGETED COMMUNITY  
INVESTMENT GRANT (TCIG)  
GRANT RECIPIENTS****YOUNG CHANCES (CEC)**

2703 Tasker St.  
Philadelphia, PA 19145  
(267) 585-2923

**ANTI-DRUG & ALCOHOL  
CRUSADERS (ADAC)**

1230 S. 20<sup>TH</sup> St.  
Philadelphia, PA 19146  
(215) 452-8785  
<https://www.adacphilly.org/>

*Services: Youth Development; Parent & Family Empowerment; and Community Engagement*

**I AM BUMI  
ENTREPRENEUR  
PROGRAM**

2308 Graysferry Ave.  
Philadelphia, PA 19146  
(267) 320-4364  
<https://www.iambumi.org/>

*Serving girls ages 5–18 years old. Filmmaking; African Dance; Hip-Hop Dance; Yoga; Modeling; Fashion Design; Arts & Crafts; Anti-Bullying*

**PHILADELPHIA  
BALLHAWKS  
ORGANIZATION**

Instagram: @Philly\_Ballhawks  
(215) 436-3696

**HOOPS UP GUNS DOWN**

(267) 975-3509

**MICRO-GRANTS RECIPIENTS  
THE REAWAKENING AGENCY**

(267) 241-7319  
thereawakeagency@gmail.com  
<https://www.aftertheawakening.org/>  
Instagram: @thereawakeningagency

*Serving formerly incarcerated or homeless individuals*

# INDEX

## CENTRAL P 42-45

### DISTRICT 6 P 42

#### HOSPITAL(S)

Pennsylvania Hospital  
Thomas Jefferson University Hospital  
Wills Eye Hospital

#### PARKS & RECREATION

Northern Liberties Recreation Center  
East Poplar Playground  
10th and Lemon Playground

#### NEIGHBORHOOD RESOURCES

Philadelphia Chinatown  
Development Corporation  
Urban League of Philadelphia  
Liberty Resources

#### HOUSING

The Salvation Army Red  
Shield Family Residence  
Philly House

#### EMPLOYMENT

Urban League of Philadelphia  
Philadelphia Youth Network  
PowerCorps PHL

#### EDUCATION

OIC Career and Academic  
Development Institute (CADI)

#### TCIG COHORT RECIPIENTS

Keystone Energy Employment  
Pipeline (KEEP) Rolling

#### CEG GRANT RECIPIENTS

ManUpPHL  
Urban League of Philadelphia  
Youth Outreach Adolescent Community  
Awareness Program (YOACAP)  
Education Works (Power Corps)

## MICRO-GRANTS RECIPIENTS

Career Wardrobe  
Philly Audio Diaries of Culture  
Trust Greater Philadelphia  
Unincarcerated Minds Inc.  
(215) People's Alliance Education Fund

### DISTRICT 9 P 43

#### HOSPITAL(S)

Hahnemann University Hospital  
Magee Rehabilitation Hospital

#### PARKS & RECREATION

Lloyd Hall Recreation Center  
Roberto Clemente Playground  
Francisville Recreation Center  
William H (Billy) Markward  
Memorial Playground  
26th and Pennsylvania Playground  
Schuylkill River Park

#### POLICE ATHLETIC LEAGUE (PAL)

COZEN

#### NEIGHBORHOOD RESOURCES

Affordable Housing Centers  
of Pennsylvania  
Clarifi  
Tenant Union Representative Network  
Urban Affairs Coalition

#### HOUSING

Office of Supportive Housing  
Appletree Family Center  
Roosevelt Darby Center  
Valley Youth House  
Youth Emergency Services Housing  
and Supportive Service

#### EMPLOYMENT

Jevs Human Services  
Career Link (Suburban Station)  
Philadelphia Unemployment Project  
Mayor's Office of Reentry Partnerships  
Mural Arts (Guild Program)

**EDUCATION**

Education Services Next Level Learning  
Community College of Philadelphia  
Benjamin Franklin High School EOP  
Gateway to College at CCP

**TCIG COHORT RECIPIENTS**

Students Run Philly Style Summer Series

**CEG GRANT RECIPIENTS**

Restorative Justice Guild Program,  
Mural Arts Philadelphia  
Anti-Violence Partnership of Philadelphia

**MICRO-GRANT RECIPIENTS**

Philadelphia Prison Society  
Students Run Philly Style  
Youth Sentencing & Reentry Project, Inc.  
Philadelphia Youth Basketball  
Youth Sentencing & Reentry Project (YSRP)

**DISTRICT 22** P 45**HOSPITAL(S)**

St. Joseph's Hospital (dba North  
Phila Health System)

**PARKS & RECREATION****POLICE ATHLETIC LEAGUE (PAL)**

FAIRHILL PAL Center  
NORTH PENN PAL Center  
23RD PAL Center  
Strawberry Mansion PAL Center

**NEIGHBORHOOD RESOURCES**

Brewerytown-Sharswood  
Civic Association  
Strawberry Mansion Neighborhood  
Action Center, Inc.

**HOUSING**

Station House

**EMPLOYMENT**

Opportunities Industrialization Center Inc.

**EDUCATION**

Camelot Academy  
Excel Academy North

**EDUCATION**

One Bright Ray - Mansion Evening

**TCIG COHORT RECIPIENTS**

Strawberry Mansion Healing Garden  
Neighborhood Creating  
Positive Connections  
Buccs Sports (Football & Basketball)  
Anti-Violence Campaign  
Literacy in The Park  
Philadelphia Gaming Initiative (PGI)  
See Me - Save Me Healing Campaign

**CEG GRANT RECIPIENTS**

YouthBuild Philly  
Philadelphia OIC  
Opportunities Industrialization  
Centers of America, Inc. (OICA) and the  
Careers & Academic Institute (CADI)  
Central Division Victim Services  
100 Black Men Philly in partnership  
with Father's Day Rally Committee  
Mothers in Charge  
New Options More Opportunities (NOMO)

**MICRO-GRANT RECIPIENTS**

People Advancing Reintegration, Inc  
Temple University (on behalf of Inside  
Out Prison Exchange Program)

**EAST**

P 46-48

**DISTRICT 24** P 46**PARKS & RECREATION****POLICE ATHLETIC LEAGUE (PAL)**

HARROWGATE PAL Center  
24TH PAL Center

**NEIGHBORHOOD RESOURCES**

New Kensington CDC

**EDUCATION**

One Bright Ray – Simpson

**TCIG COHORT RECIPIENTS**

By Faith External Health Care, DBA  
By Faith Health and Healing

**CEG GRANT RECIPIENTS**

Impact Services

**MICRO-GRANT RECIPIENTS**

First Step Staffing

**DISTRICT 25** P 46-47**HOSPITAL(S)**

St. Christopher's Hospital for Children  
Temple University Hospital - Main Campus  
Shriners Hospitals For Children

**PARKS & RECREATION****HOUSING**

Lutheran Settlement House—  
Jane Addams Place

**NEIGHBORHOOD RESOURCES**

Hunting Park NAC  
HACE: Central Office  
Congreso de Latinos Unidos  
Esperanza

**EMPLOYMENT**

Career Link (North)

**EDUCATION**

Congresso de Latinos Unidos  
Camelot Academy East  
One Bright Ray – Fairhill  
YESPhilly

**CEG GRANT RECIPIENTS**

Timoteo Sports  
Somerset Community Center &  
Lighthouse Sports Complex

**MICRO-GRANT RECIPIENTS**

Klean Kensington

**DISTRICT 26** P 47

Hospital(s)  
Girard Medical Center  
Temple Episcopal  
Kensington Hospital

**PARKS & RECREATION**

**POLICE ATHLETIC LEAGUE**

26th District Pal Center

**NEIGHBORHOOD RESOURCES**

South Kensington Community  
Partners, Inc.  
Asociación Puertorriqueños  
en Marcha (APM)  
Norris Square Community Alliance

**EDUCATION**

Ligouri Academy Fortis

**TCIG COHORT RECIPIENTS**

MusiCore  
Friday Night Lights Soccer and Teen  
Summer Engagement Initiative

**CEG GRANT RECIPIENTS**

Norris Square Community Alliance

**MICRO-GRANT RECIPIENTS**

SHOOTERS: Narrative Shift

**NORTHEAST** P 49-50

**DISTRICT 2** P 49

**HOSPITAL(S)**

Fox Chase Cancer Center  
Kindred Hospital Philadelphia  
Jeanes Hospital

**TCIG COHORT RECIPIENTS**

American Neighborhood Movie Nights  
and Kung Fu Learning Museum

**DISTRICT 15** P 49-50

**HOSPITAL(S)**

Aria Health- Frankford Campus  
Friends Hospital

**PARKS & RECREATION**

**POLICE ATHLETIC LEAGUE (PAL)**

TACONY PAL Center

**NEIGHBORHOOD RESOURCES**

Affordable Housing Centers  
of PA: Northeast Office  
Frankford CDC  
HACE: Frankford Office

**EDUCATION**

El Centro de Estudiantes  
Excel Academy South  
El Centro de Estudiantes

TCIG Cohort Recipients  
P.U.S.H Through the Wire, Circle  
of Dreams, O.M.U.N.I.Q.U.E  
#YouGoodMan?: Men’s Wellness Group

**DISTRICT 7** P 50

**HOSPITAL(S)**

Angela Jane Pavilion  
Rehabilitation Hospital

**PARKS & RECREATION**

**DISTRICT 8** P 50

**HOSPITAL(S)**

Aria Health- Torresdale Campus  
Nazareth Hospital

**PARKS & RECREATION**

**CORRECTIONAL FACILITIES**

Detention Center  
Alternative Special Detention Central Unit  
Holmesburg Prison  
Curran Fromhold Correctional Facility  
Pennsylvania Board of Parole  
Probation Office  
Philadelphia Industrial  
Correctional Center  
Riverside Correctional Facility



**NORTHWEST**

P 51-54

**DISTRICT 5**

P 51

**HOSPITAL(S)**

Roxborough Memorial Hospital  
Fairmount Behavioral Health Systems

**PARKS & RECREATION****NEIGHBORHOOD RESOURCES**

Intercommunity Action (Senior Center)

**TCIG COHORT RECIPIENTS**

2022 Summer Program at C.B.  
Community Schools

**CEG GRANT RECIPIENTS**

New Leash on Life

**MICRO-GRANT RECIPIENTS**

New Leash on Life USA

**DISTRICT 14**

P 51-53

**HOSPITAL(S)**

Chestnut Hill Hospital  
Germantown Community Health Center

**PARKS & RECREATION****POLICE ATHLETIC LEAGUE (PAL)**

PALEY PAL Center

**NEIGHBORHOOD RESOURCES**

Center in the Park  
Mt. Airy CDC  
Germantown United CDC  
Germantown Crisis Ministry  
Juvenile Justice Center of Philadelphia  
West Oak Lane CDC

**HOUSING**

Covenant House  
Interfaith Hospitality Network  
Whosoever Gospel Mission  
Shelter, Food, Clothing, Education,  
Counseling, Rehabilitation

**EMPLOYMENT**

Career Link (Northwest)

**EDUCATION**

Ombudsman Northwest Accelerated  
TCIG Cohort Recipients  
Reviving the Village Summer  
Social Experience  
FIRE Youth Development Program  
Bout Mine - I Matter Gun Violence  
Prevention Project  
Summer Family Fun Days  
PHILLY REQUIEM "Y2C-YEAR 2  
OF THE COVID PANDEMIC"  
The SNAP Co. Experience Arts Outreach

**CEG GRANT RECIPIENTS**

Men Who Care of Germantown  
Black Muslim Men United for  
a Better Philadelphia  
Every Murder is Real (EMIR)

**MICRO-GRANT RECIPIENTS**

F.I.R.E. Free Inspiration Reaching Everyone  
Women in Dialogue

**DISTRICT 35**

P 53

**HOSPITAL(S)**

Einstein Medical Center - Philadelphia\*  
Moss Rehabilitation Hospital

**PARKS & RECREATION****NEIGHBORHOOD RESOURCES**

Greater Philadelphia Asian Social  
Service Center (GPASS)  
Northwest Counseling Service

**TCIG COHORT RECIPIENTS**

Summer WorkReady and Community  
Events at Hand2Paw  
Trauma informed mindfulness meditation

**CEG GRANT RECIPIENTS**

Uplift Workforce Solutions

**MICRO-GRANT RECIPIENTS**

Trapdoor Inc

**DISTRICT 39**

P 53-54

**PARKS & RECREATION****NEIGHBORHOOD RESOURCES**

Nicetown CDC  
Tioga United, Inc.

**HOUSING**

Gaudenzia Reentry House Prevention,  
Recovery Support Services, Housing

**TCIG COHORT RECIPIENTS**

KING'S UNIVERSITY  
Positive Movement Drumline  
Roll ROLL WITH RESPECT

**CEG GRANT RECIPIENTS**

Nicetown CDC  
Mercy Neighborhood Ministries

**MICRO-GRANT RECIPIENTS**

Sisters Returning Home  
PAR-Recycle Works

**SOUTHWEST**

P 54-57

**DISTRICT 12**

P 54-55

**PARKS & RECREATION****POLICE ATHLETIC LEAGUE (PAL)**

SOUTHWEST PAL Center

**NEIGHBORHOOD RESOURCES**

Southwest CDC

**EDUCATION**

One Bright Ray – Elmwood

**TCIG COHORT RECIPIENTS**

Philly Kids Play  
Healing Circles  
Mental Health Youth Summer Series

**CEG GRANT RECIPIENTS**

Educators 4 Education

**MICRO-GRANT RECIPIENTS**

Dimplez 4 Dayz, Incorporated  
Healing Communities PA

**DISTRICT 16** P 55-56**HOSPITAL(S)**

Penn Presbyterian Medical Center  
Kirkbride Center

**PARKS & RECREATION****NEIGHBORHOOD RESOURCES**

We Never Say Never  
Mt. Vernon Manor CDC  
People's Emergency Center CDC

**HOUSING**

Gaudenzia

**EMPLOYMENT**

Career Link (West)

**TCIG COHORT RECIPIENTS**

Roses Clubhouse's Programming  
A New Dawn Incorporated

**CEG GRANT RECIPIENTS**

Beyond the Bars

**MICRO-GRANT RECIPIENTS**

Dimplez 4 Dayz, Inc.

**DISTRICT 18** P 56**HOSPITAL(S)**

Hospital of the University of Pennsylvania  
The Children's Hospital of Philadelphia  
34<sup>TH</sup> St. and Civic Center Blvd.  
Mercy Philadelphia Hospital  
Philadelphia VA Medical Center

**PARKS & RECREATION****NEIGHBORHOOD RESOURCES**

Intercultural Behavioral  
Health Center–West

**TCIG COHORT RECIPIENTS**

M.A.P.S Initiative Enhancement  
Inspire: Group Mentoring  
Community Care Day

**MICRO-GRANT RECIPIENTS**

Mentor Leaders Produce Mentor Leaders  
Redemption Housing Inc.

**DISTRICT 19** P 57**HOSPITAL(S)**

Belmont Center for  
Comprehensive Treatment

**PARKS & RECREATION****POLICE ATHLETIC LEAGUE (PAL)**

WYNNFIELD PAL Center  
Haddington PAL Center

**NEIGHBORHOOD RESOURCES**

UAC/Parkside Association of Philadelphia  
ACHIEVEability  
The Enterprise Center CDC  
Affordable Housing Centers of PA

**TCIG COHORT RECIPIENTS**

Positive Choices  
Community Health and Gardens, Inc  
Custom Tee's Printhouse /  
Positive Printing Program

**MICRO-GRANT RECIPIENTS**

The Liberation Foundation  
Elevation Project  
TechCORE2 Nonprofit Corporation  
Education Culture Opportunities  
Foundation

**SOUTH**

P 58-59

**DISTRICT 1**

P 58

**HOSPITAL(S)**

Kindred Hospital South Philadelphia  
Saint Agnes Long Term Care Hospital

**NEIGHBORHOOD RESOURCES**

Greater Philadelphia Community  
Alliance (GPCA) Dixon House  
Intercultural Behavioral  
Health Center-South

**EMPLOYMENT**

Philadelphia Job Corps Center

**CEG GRANT RECIPIENTS**

Unity in the Community

**DISTRICT 3**

P 58-59

**HOSPITAL**

Thomas Jefferson University  
Hospitals Methodist

**PARKS & RECREATION****POLICE ATHLETIC LEAGUE (PAL)**

FORD PAL Center

**NEIGHBORHOOD RESOURCES**

Whitman Council, Inc.  
Philadelphia Senior Center  
Greater Philadelphia Community  
Alliance (GPCA) Houston Center

**EDUCATION**

South Philadelphia High School EOP

**TCIG COHORT RECIPIENTS**

Project Accelerate

**MICRO-GRANT RECIPIENTS**

I'm FREE - Females Reentering  
Empowering Each Other, Inc.

**DISTRICT 17**

P 59

**HOSPITAL(S)**

Good Shepherd Penn Partners

**PARKS & RECREATION****POLICE ATHLETIC LEAGUE (PAL)**

Grays Ferry PAL Center

**TCIG COHORT RECIPIENTS**

Young Chances (CEC)  
Anti-Drug & Alcohol Crusaders (ADAC)  
I AM BUMI ENTREPRENEUR PROGRAM  
Philadelphia Ballhawks organization  
Hoops Up Guns Down

**CEG GRANT RECIPIENTS**

African Family Health Organization

**MICRO-GRANT RECIPIENTS**

The Reawakening Agency



Office of  
**Policy and Strategic Initiatives for  
Criminal Justice and Public Safety**



**OFFICE OF POLICY AND STRATEGIC INITIATIVES FOR  
CRIMINAL JUSTICE AND PUBLIC SAFETY (CJPS)**

1401 John F. Kennedy Blvd., Suite 1430  
Philadelphia, PA 19102



**OFFICE OF CRIMINAL JUSTICE (OCJ)**

1401 John F. Kennedy Blvd., Suite 1430  
Philadelphia, PA 19102



**OFFICE OF VIOLENCE PREVENTION (OVP)**

1425 Arch St., Fourth Floor, Philadelphia, PA 19102  
OVPinfo@phila.gov



**OFFICE OF REENTRY PARTNERSHIPS (ORP)**

1425 Arch St., First Floor, Philadelphia, PA 19102  
ORP@phila.gov



**OFFICE OF TOWN WATCH INTEGRATED SERVICES (TWIS)**

1515 Arch St., 11<sup>TH</sup> Floor  
Philadelphia, PA 19107  
Anthony.murphy@phila.gov



**OFFICE OF THE VICTIM ADVOCATE (OVA)**

Land Title Building  
100 S. Broad St., 4<sup>TH</sup> Floor  
victim.advocate@phila.gov