

VISION ZERO

CITY OF PHILADELPHIA

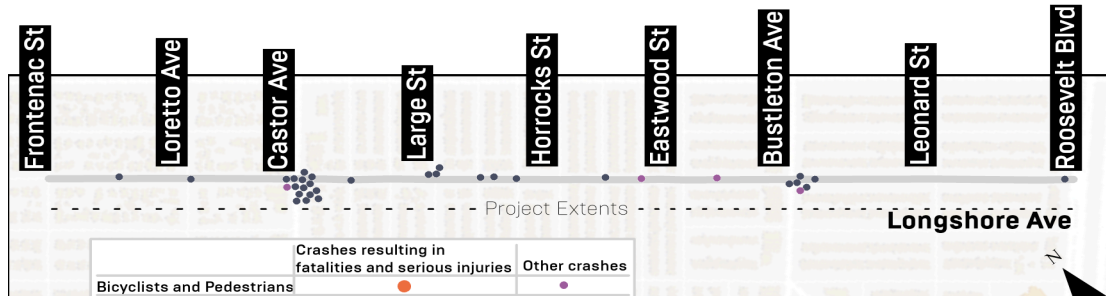
GREAT STREETS PHL Longshore Ave (Roosevelt Blvd to Frontenac St)

ZERO TRAFFIC DEATHS BY 2030

2023 Project Corridor Fact Sheet

ABOUT THE PROJECT

PROJECT CORRIDOR MAP



WHAT IS GREAT STREETS PHL?

Great Streets PHL is part of the City's Vision Zero strategy which aims to eliminate all traffic-related deaths and severe injuries, and increase safety, health, & mobility. Funded by a federal RAISE grant for both design and construction.

WHAT WILL GREAT STREETS PHL DO?

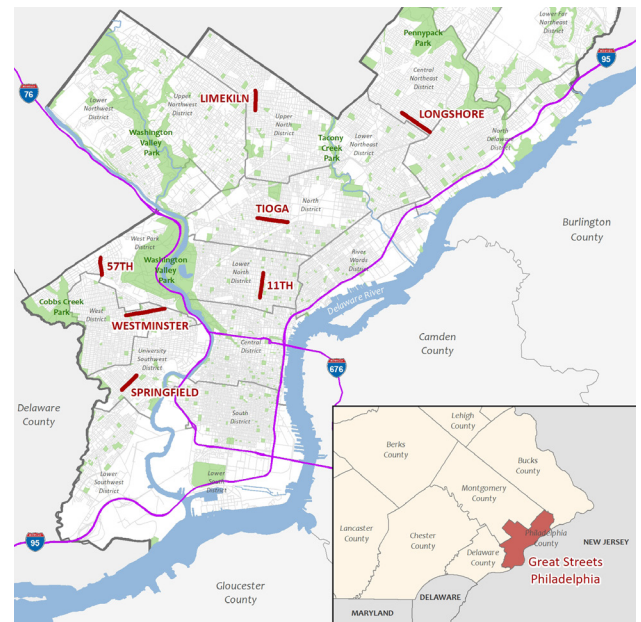
IMPROVE SAFETY: Each of the streets included in this project are on the High Injury Network where the greatest concentration of traffic-related deaths and injuries occur. Improvements to the street design will make streets safer and more welcoming for people using all modes of travel.

COLLABORATE: Collaborate with residents and neighbors to get input on the traffic safety issues and what improvement types are wanted and needed.

REPAIR & REFRESH STREETS: Bring streets up to a "state of good repair" that includes repaving roads, fixing potholes, re-striping, signal upgrades, and standard safety improvements like ADA-accessible ramps at crossings.

CREATE WORKFORCE DEVELOPMENT OPPORTUNITIES: Create connections to job training and resources that will enable local workers to benefit from job opportunities associated with project construction.

WHERE ARE THE 7 CORRIDORS?



WHAT IS VISION ZERO?

Vision Zero (VZ) is a policy that says traffic deaths are preventable & unacceptable. Human life is prioritized over moving vehicles, because people are more vulnerable on the street. Principles like equity, safe streets and safe speeds are essential.

CRASHES IN THE PROJECT AREA



There were **34 crashes** on Longshore Ave between 2017 and 2021. **20** crashes were angled at intersections, **3** were rear-ends, and **4** involved pedestrians.

DEATHS & INJURIES



35 people were injured in crashes on Longshore Ave between 2017 and 2021.