

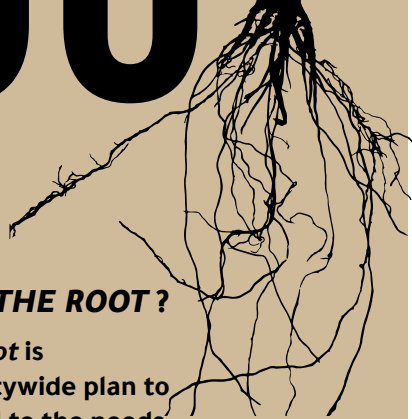
GROWING FROM THE ROOT

PUBLIC MEETING 3
(VIRTUAL)
November 3, 2022

WHAT IS GROWING FROM THE ROOT?

Growing from the Root is Philadelphia's first citywide plan to organize and respond to the needs of the urban agriculture community.

The Plan is rooted with input from community organizers, local growers, small business owners, non-profit organizations, and City officials interested in maintaining and enhancing Philadelphia's unique assembly of urban farms and gardens. From this input, the Plan will highlight the City's existing barriers to supporting urban agriculture and develop policy, program, and project recommendations for City agencies and partners. This Plan and its facilitated engagement events are managed by the Philadelphia Parks and Recreation Department.



FIELD REPORT: PUBLIC MEETING #3 SUMMARY

WHAT DID THE MEETING INCLUDE?

The third and final public meeting was held virtually via Zoom on the evening of November 3, 2022. 115 people tuned in for the meeting, which marked the release of the draft plan for public review and comment.

During the meeting, the planning team presented a recap of the planning process from start to end as well as an overview of the draft plan and priority recommendations. Attendees learned how and where to access the draft plan document online and how to provide written feedback during the three-week public comment period, which ran from November 3 through 28, 2022.

Throughout the two-hour meeting, the audience remained active and engaged in a lively Zoom chat thread, through interactive polling questions (see results on the following page), and an end-of-meeting question and answer period, with questions submitted via the chat function.

Despite the virtual format, there was a lot of energy and passion evident in the Zoom room, as well as a high level of sustained commitment to the future of urban agriculture in Philadelphia expressed throughout the meeting.

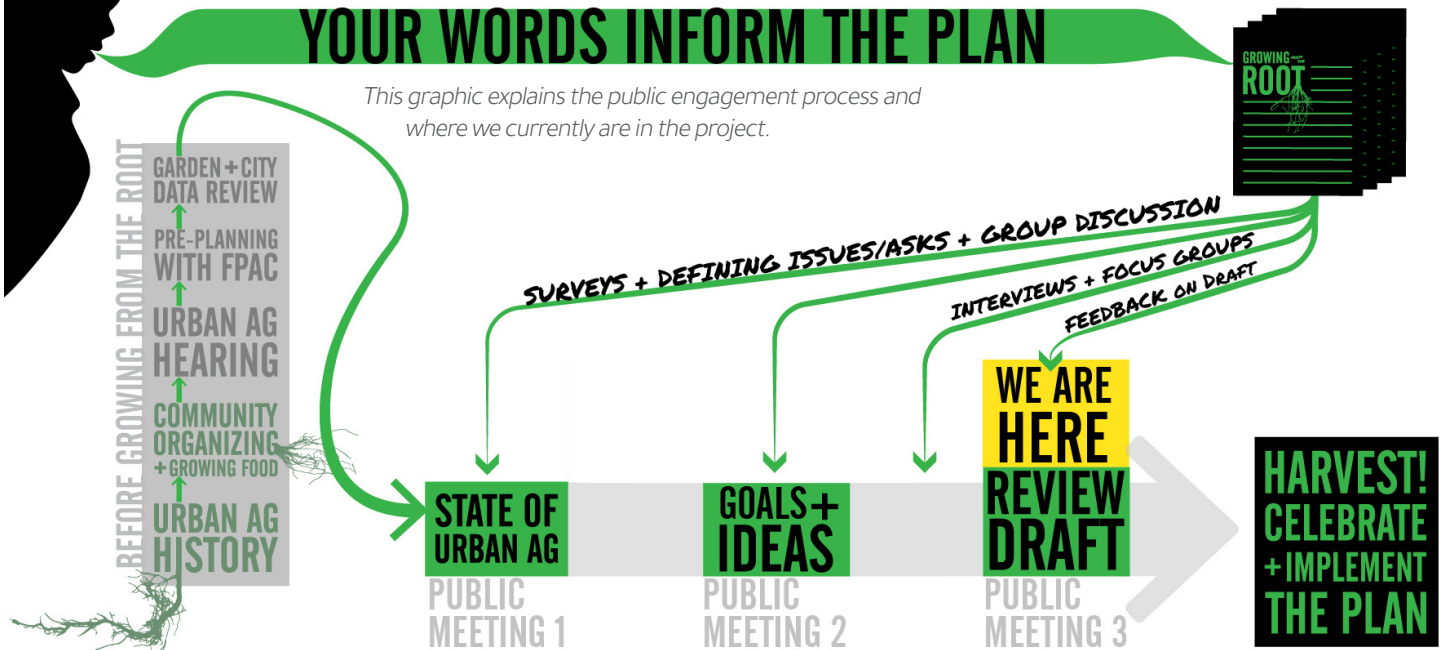
Because of the virtual format, there were many, many emojis!



Much gratitude to all who attended and participated and all who read through the draft plan, and submitted comments for consideration.

YOUR WORDS INFORM THE PLAN

This graphic explains the public engagement process and where we currently are in the project.



FIELD REPORT

PUBLIC MEETING #3 SUMMARY

POLLING QUESTIONS & RESULTS

Are you struggling to get access to public or private land for farming or gardening?

40% of respondents answered YES, I am still struggling with land insecurity

19% of respondents answered NO, I have land security where I garden or farm

34% of respondents answered I am not looking for land on which to garden or farm

7% of respondents answered Other

Do you participate in any composting today (at home, at your garden, at school, etc.)?

78% of respondents answered YES

2% of respondents answered NO

20% of respondents answered No, but I would like to!

Have you started a new food project or seen new food projects take root in your neighborhood since 2020?

54% of respondents answered YES!

43% of respondents answered NO

Does your food/farm job meet your needs for living (wages, benefits, time off, etc.)?

16% of respondents answered YES

33% of respondents answered NO

52% of respondents answered Does not apply

Has your garden or farm started to grow more food since the COVID-19 pandemic?

32% of respondents answered YES, definitely!

15% of respondents answered NO, no change

13% of respondents answered I'm not sure

40% of respondents answered Does not apply

**"WOOT WOOT!
LAND, FOOD +
POWER
LOVE Y'ALL"
- meeting participant**