



Carousel House Rebuild Community Design Workshop

March 30, 2023, 5:30PM-7:30PM



PHILADELPHIA
PARKS &
RECREATION

DIGSA

studiopacifica

Ground Reconsidered

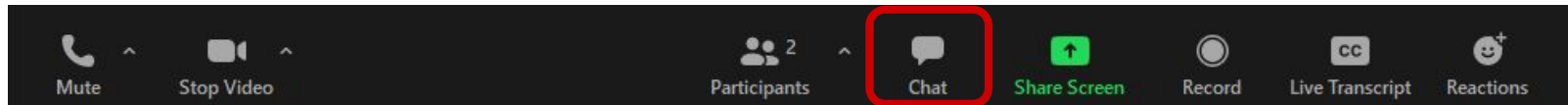


Community Capacity Builders

Please Introduce Yourself!

1. Please introduce yourself in the Chat by sharing your **name** and **your favorite springtime activity!**
2. Fill out the sign-in sheet (link provided in the chat).

[Click on "chat" to introduce yourself.](#)



Agenda

1

About the Project

2

What We've Heard

3

Project Resources

4

Community-Driven Draft Design

5

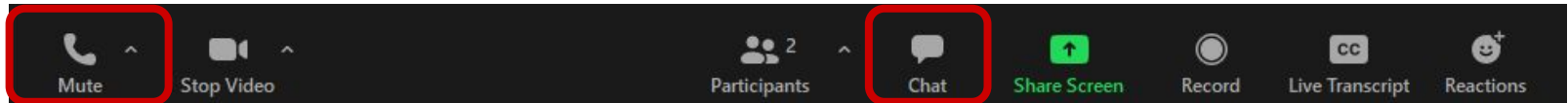
Breakout Room Discussions

Meeting Ground Rules

- Please keep your microphone muted during the presentation. At the end of the presentation, you may unmute and speak to share your thoughts and questions.
- Feel free to use the chat to ask questions and share ideas throughout the meeting.

Mute button

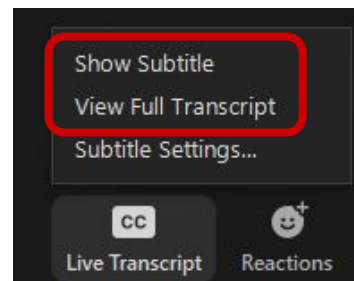
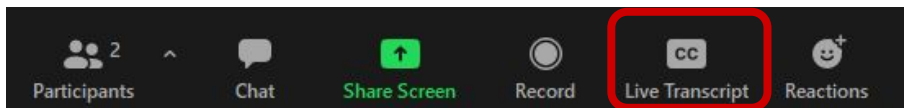
Click on "chat" to type a question or idea



How to View Closed Captions


- Click on the “CC” (closed captioning) button to view the live transcript.
- You can either choose “Show Subtitles” or “View Full Transcript”
- Our ASL interpreters are Julie Gould Marothy and Susan Chinnici Moyer from DHI, LLC.

[Click on “CC” for closed captions](#)





**Welcome from Rebuild
Executive Director,
Kira Strong**

A solid red vertical bar is positioned on the left side of the slide, extending from the top to the bottom.

**Welcome from the
Commissioner of Philadelphia
Parks and Recreation,
Kathryn Ott Lovell**



**Welcome from
City Councilmember
Curtis Jones**

1. About the Project

Project Focus



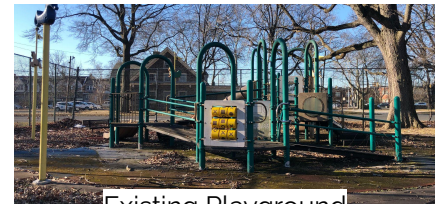
Satellite image of the Carousel House with Rebuild project scope outlined in yellow.



The Gym at the existing Carousel House



The Pool at the existing Carousel House.



Existing Playground

Project Goals

The Rebuild project at the Carousel House will create a better facility for all. The completed project will **retain all former programming** and be **inclusive for all** participants.

Rebuild commits to:

- Acknowledge history
- Engage the community
- Invest intentionally

Project Lead: Rebuild

Community involvement is central to **Rebuild's** mission: To make physical improvements at neighborhood parks, playgrounds, recreation centers, and libraries informed by community input and engagement processes that leverage residents' knowledge, power, and expertise.



Amanda Colon-Smith
Community Engagement
Director



Heather McClain
Community Engagement
Manager



Kara Medow, AIA
Senior Design and Construction
Project Manager

Project Design: DIGSAU

DIGSAU is a Philadelphia-based architecture studio and a nationally-recognized leader in the design of meaningful buildings. They led the design of the Discovery Center in East Fairmount Park and the Rebuild improvements at Myers Rec Center.

DIGSA



Jules Dingle, FAIA



Jeff Goldstein, FAIA



Adria Longenderfer, AIA



Rolando Lopez, AIA



Sarah Curry

Project Design: Studio Pacifica

Studio Pacifica is a specialized consulting practice driven by a belief in universal design that translates into built environments that work for people of all abilities and ages.

studiopacifica



Karen L Braitmayer, FAIA



Joyce Klontz, AIA



K Wheeler

Project Design: Ground Reconsidered

Ground Reconsidered, Inc. is a woman-owned landscape architecture practice dedicated to creating engaging, beautiful, and memorable places. Our designs respond to visual and physical cues from the environment as well as to the meaning and purpose a place has to its users.

Ground **Reconsidered**



Julie Bush, ASLA



Sarah Endriss, ASLA



James Bonney

Community Engagement: Community Capacity Builders

Community Capacity Builders (CCB) is working with Rebuild to build relationships and engage community members in the Carousel House Rebuild project. CCB centers the voices and expertise of site users and residents in the design process.



Donna Griffin

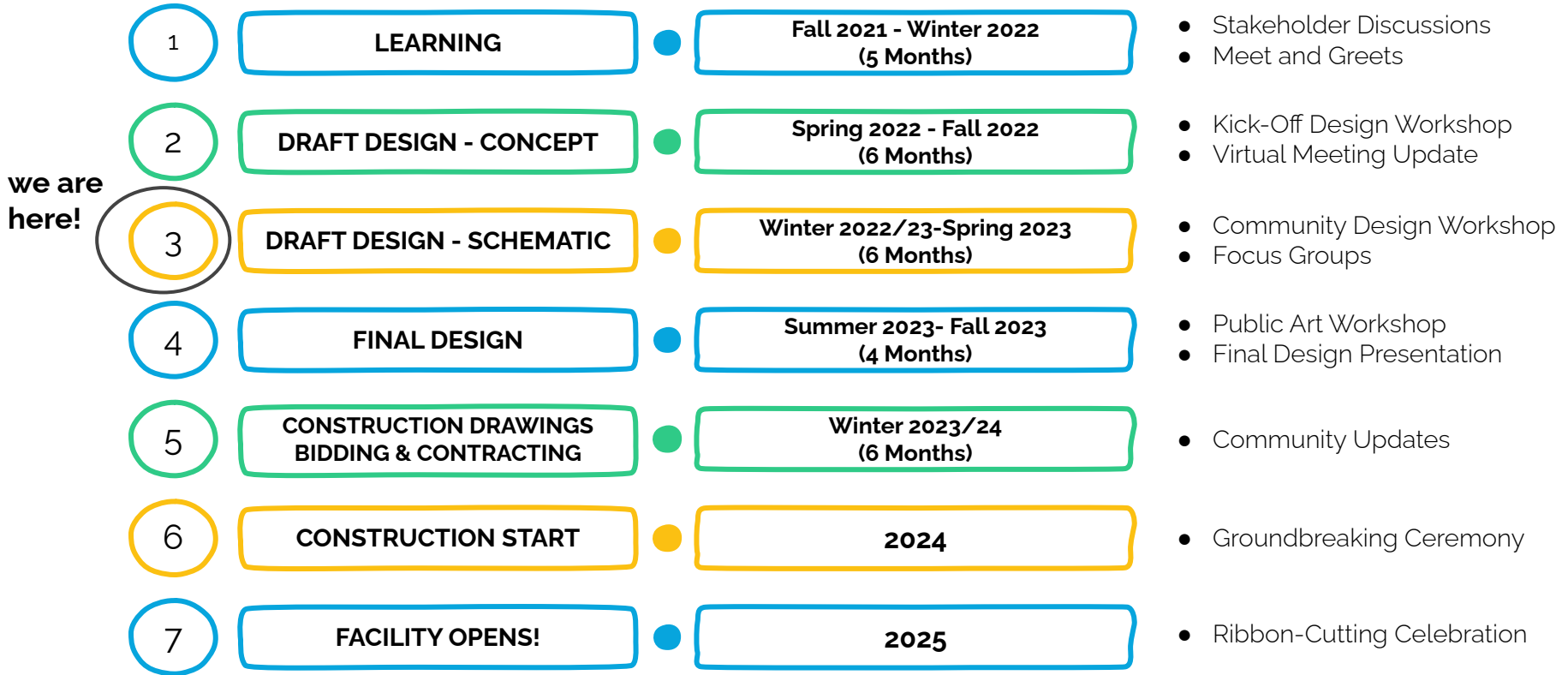


Jenny Chen



Marangeli Mejia-Rabell

Project Timeline



Total time approximately 3-4 years

2. What We've Heard

Engagement Activities



Meet & Greet
November 2021
109 Participants



Kick-Off Design Workshop
February 2022
124 Participants



Celebrating History Pop-ups
Summer 2022
31 Participants



Community Update
September 2022
44 Participants

Who We've Talked With

- Carousel House staff, Advisory Council, participants, and activity leaders
- Service providers and advocates
- Mayor's Commission for People with Disabilities
- Parkside organizations, businesses, institutions, and resident leaders
- Local political leaders



Carousel House stakeholders sharing their thoughts and priorities with the Rebuild team.

What We've Heard: Desired Spaces

Over 400 public comments received from the Kick-Off Design Workshops!

- Gym with 2 basketball courts with enough space for accessible seating and for players to transition between games
- Indoor pool with a zero-entry ramp to be used for therapy, classes, and recreation
- Spacious locker rooms and bathrooms
- Multi-purpose rooms with accessible equipment that can be used for small or large meetings and activities
- Abundant storage

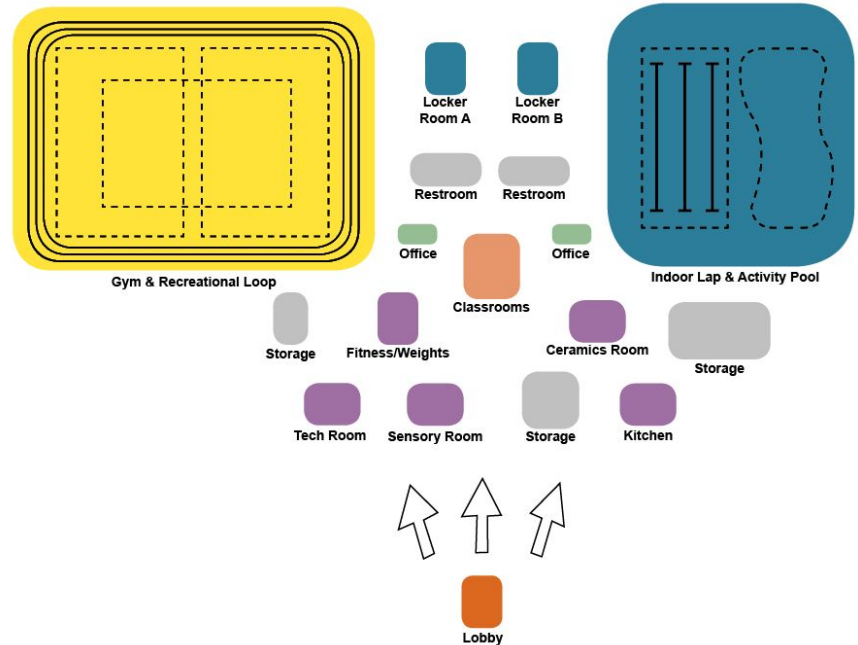


Diagram of desired spaces

3. Project Resources

Funding Needs and Commitments

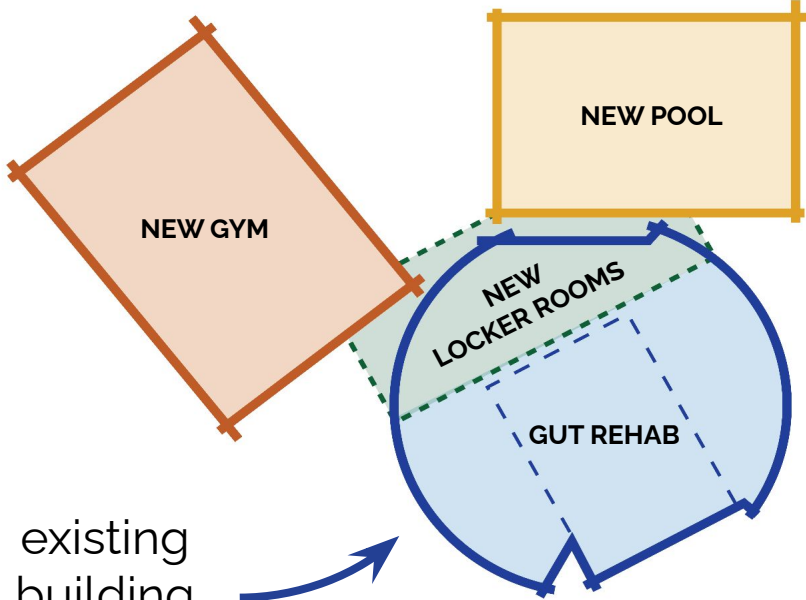
- After our virtual update meeting last September, many of you submitted letters of support for the project. These helped demonstrate the need for the new facility and the community's support.
- Rebuild applied to the state and was awarded \$1 Million of RACP funds for the project!
- Mayor Kenney, through Rebuild, has prioritized fully funding this project in partnership with City Council.

4. Community-Driven Draft Design

Meeting Community Priorities with Adaptive Re-Use



EXISTING



existing
building
foundation

PROPOSED

Benefits of Adaptive Re-Use

- More than doubles the size of the existing Carousel House building!
- Gut rehab all the interiors
- Environmentally-safe and efficient
- Cost-effective, allowing Rebuild to maximize investments in brand-new interiors and additional spaces

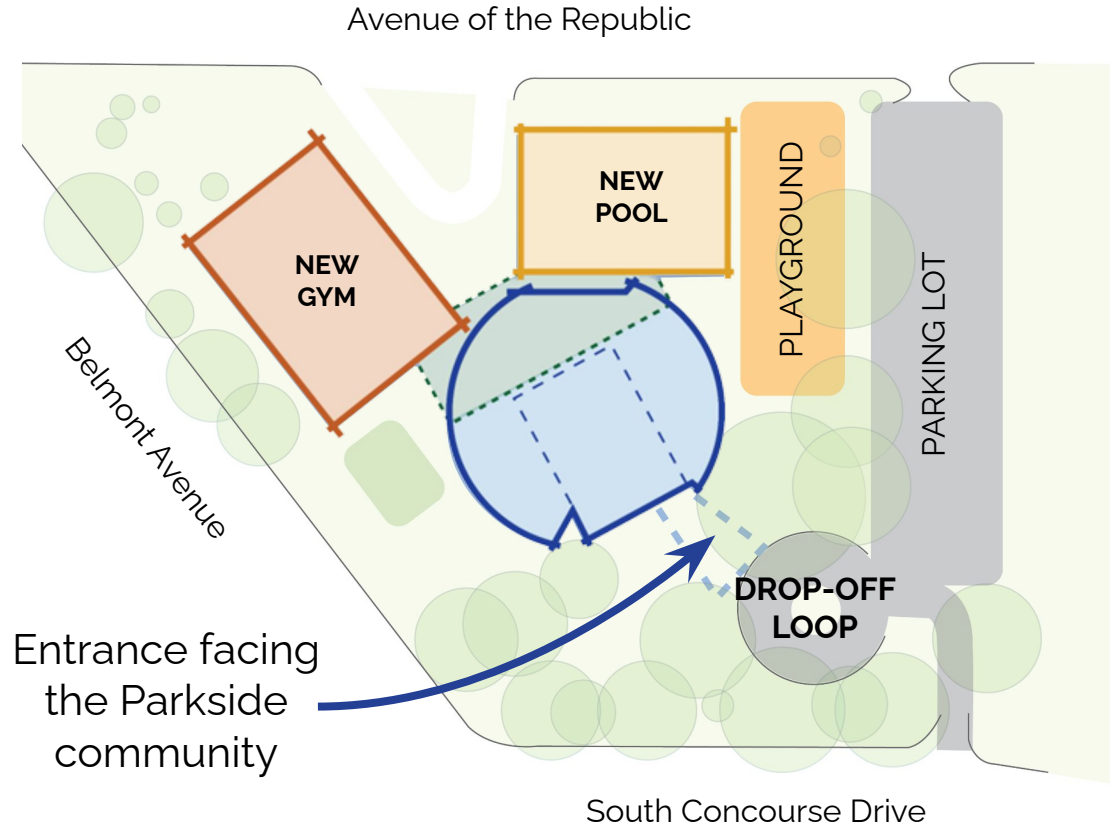


Before Adaptive Re-Use
(Photo Credit: Scout Ltd)

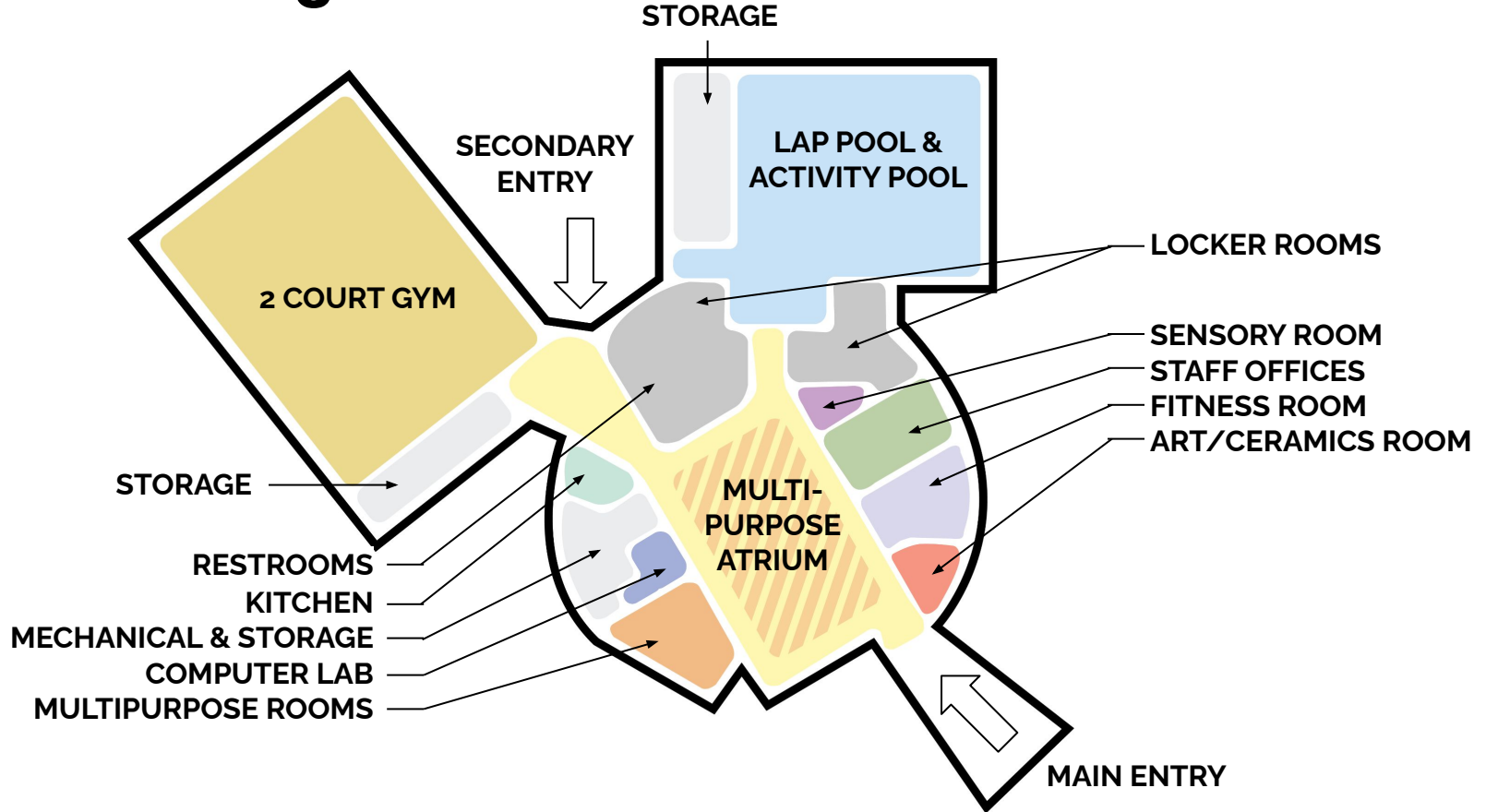


After Adaptive Re-Use
(Photo Credit: Scout Ltd)

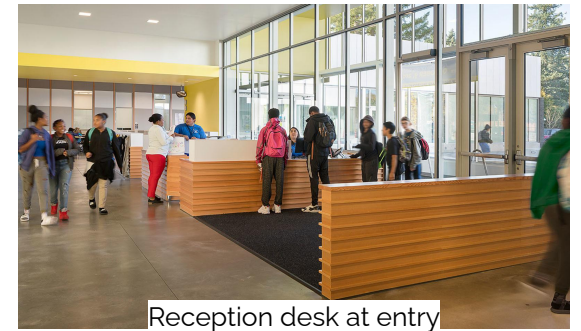
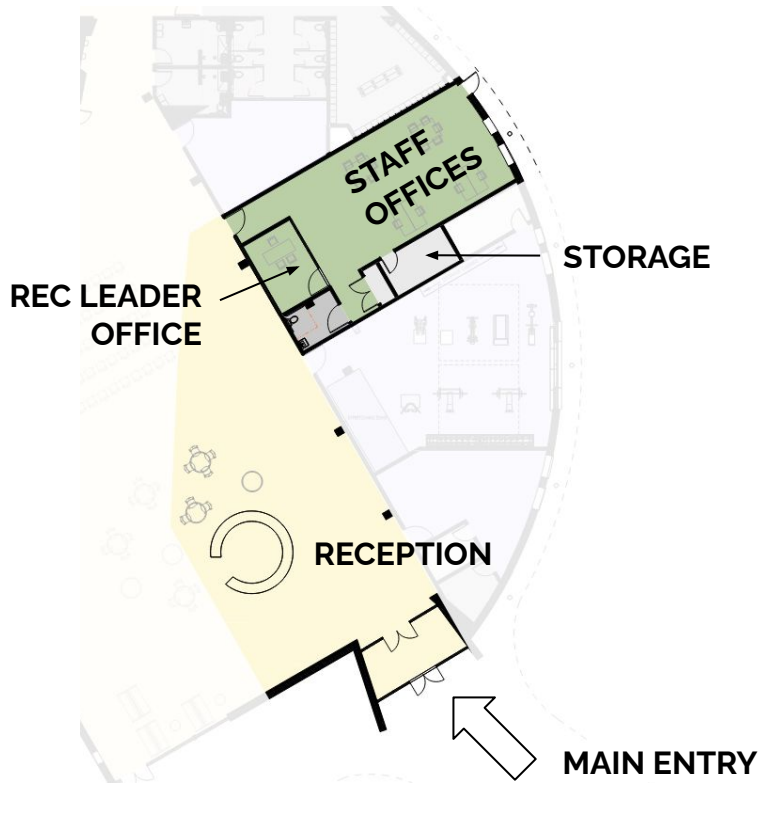
Overall Site Plan



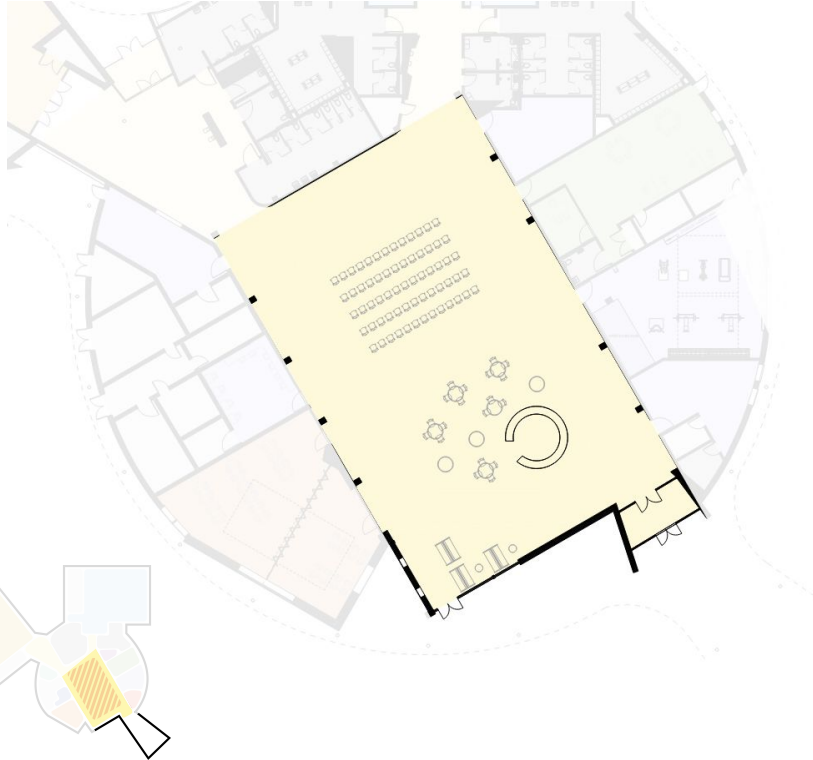
Overall Building Plan



Proposed Space: Entry/Lobby/Offices



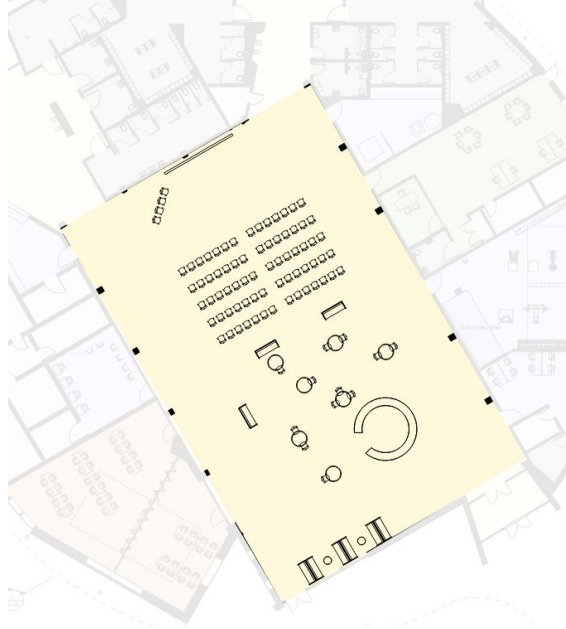
Proposed Space: Multi-Purpose Atrium



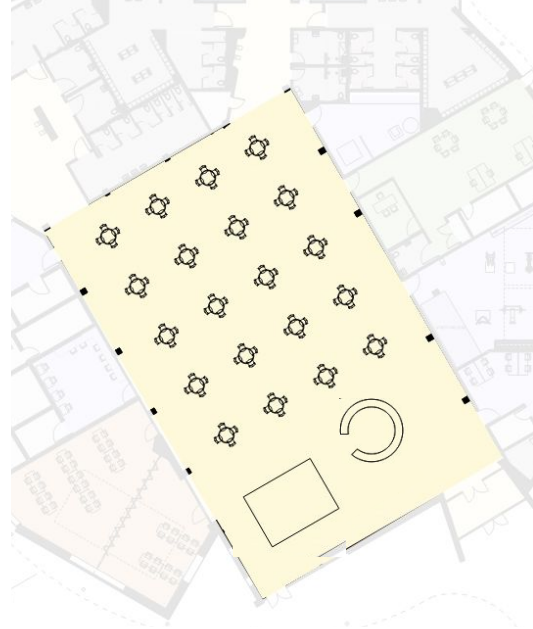
By removing the basketball hoops, the scoreboard, the bleachers, and the low walls, the existing gym can be transformed into an open, multi-purpose space



Proposed Space: Multi-Purpose Atrium



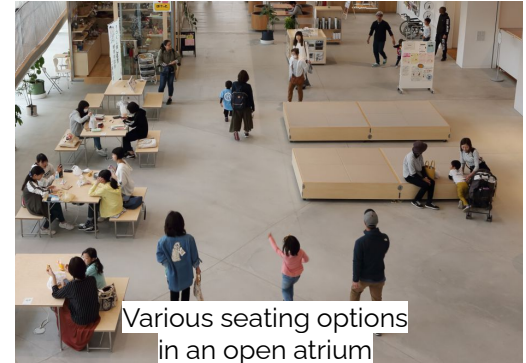
COMMUNITY MEETING



DINNER & DANCE FLOOR

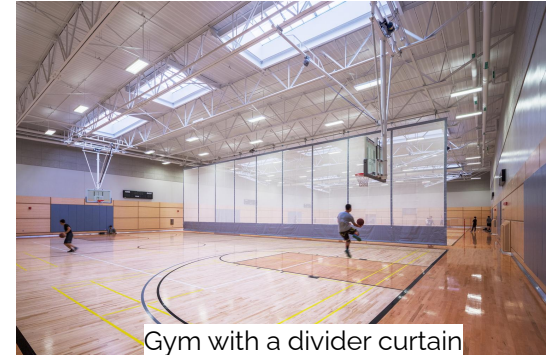
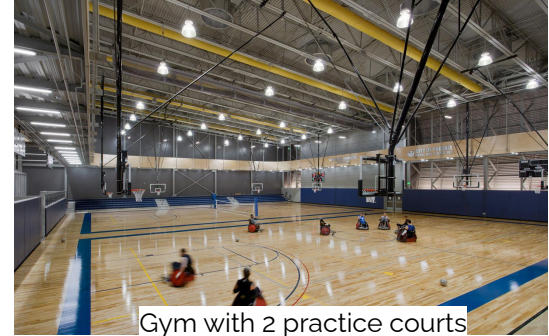
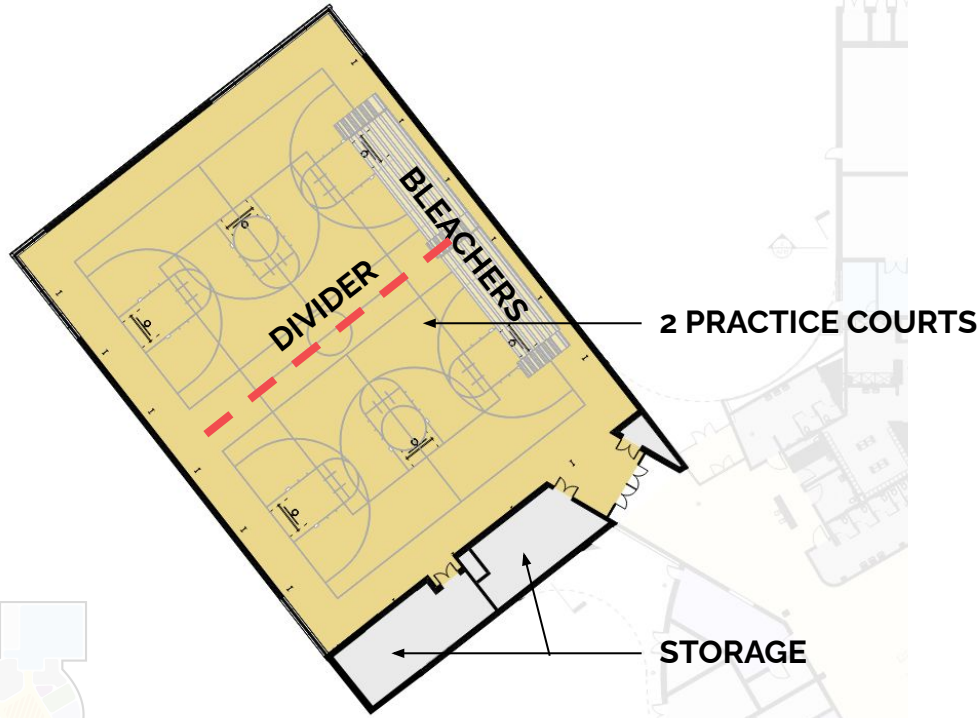


Large room set up with chairs for a lecture

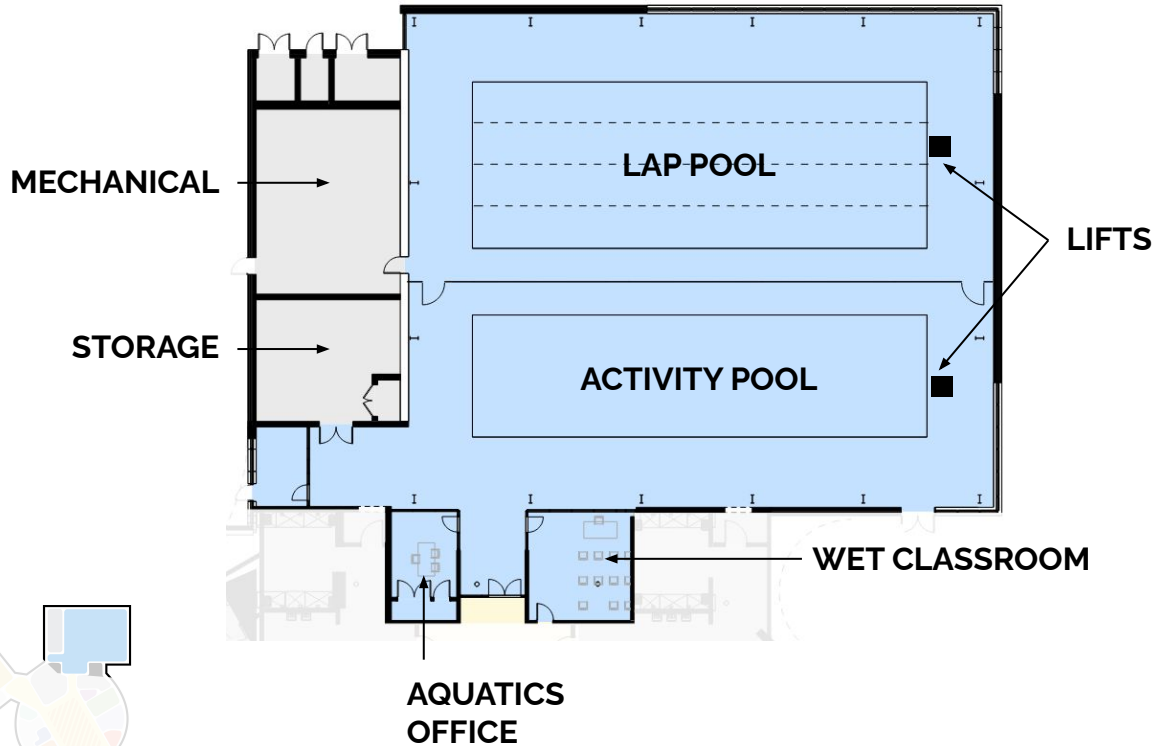


Various seating options in an open atrium

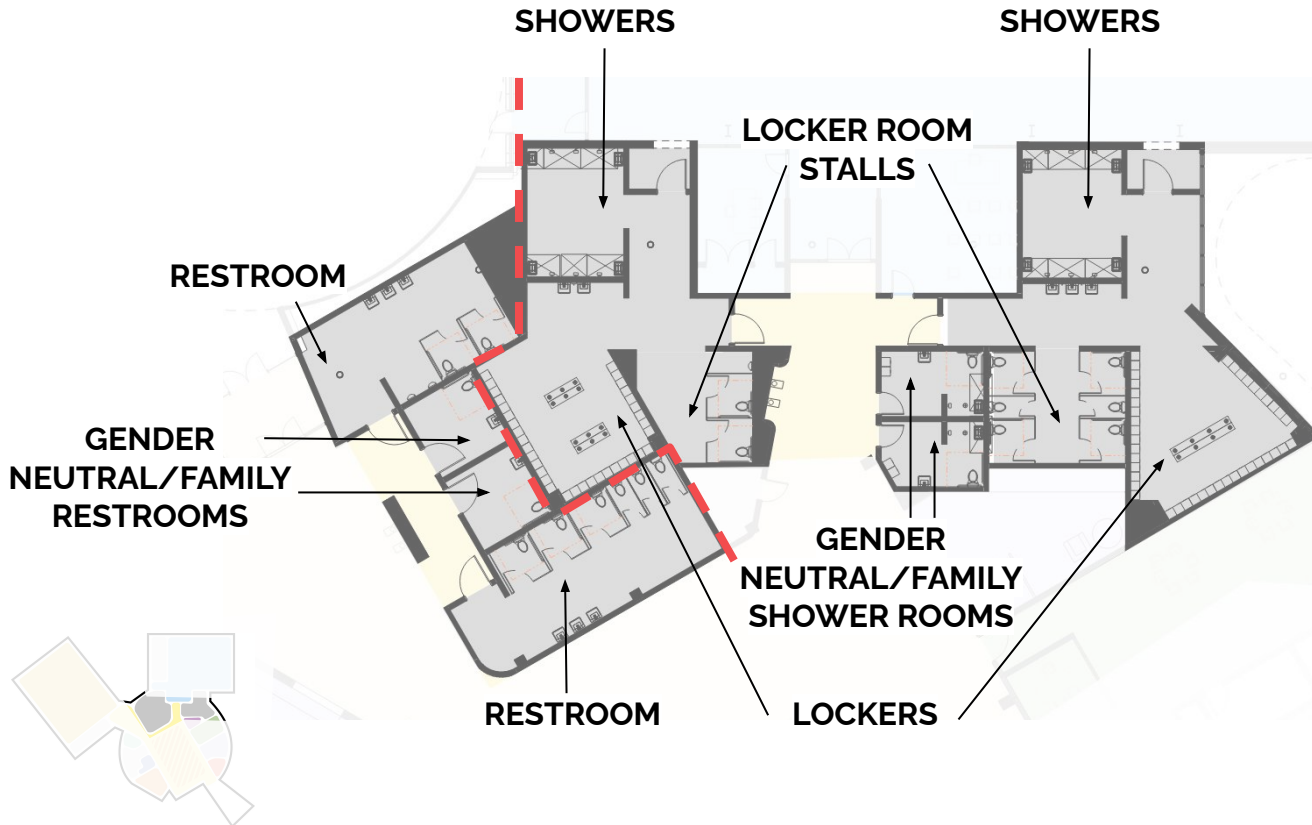
Proposed Space: Gym



Proposed Space: Pool



Proposed Space: Locker Rooms/Restrooms

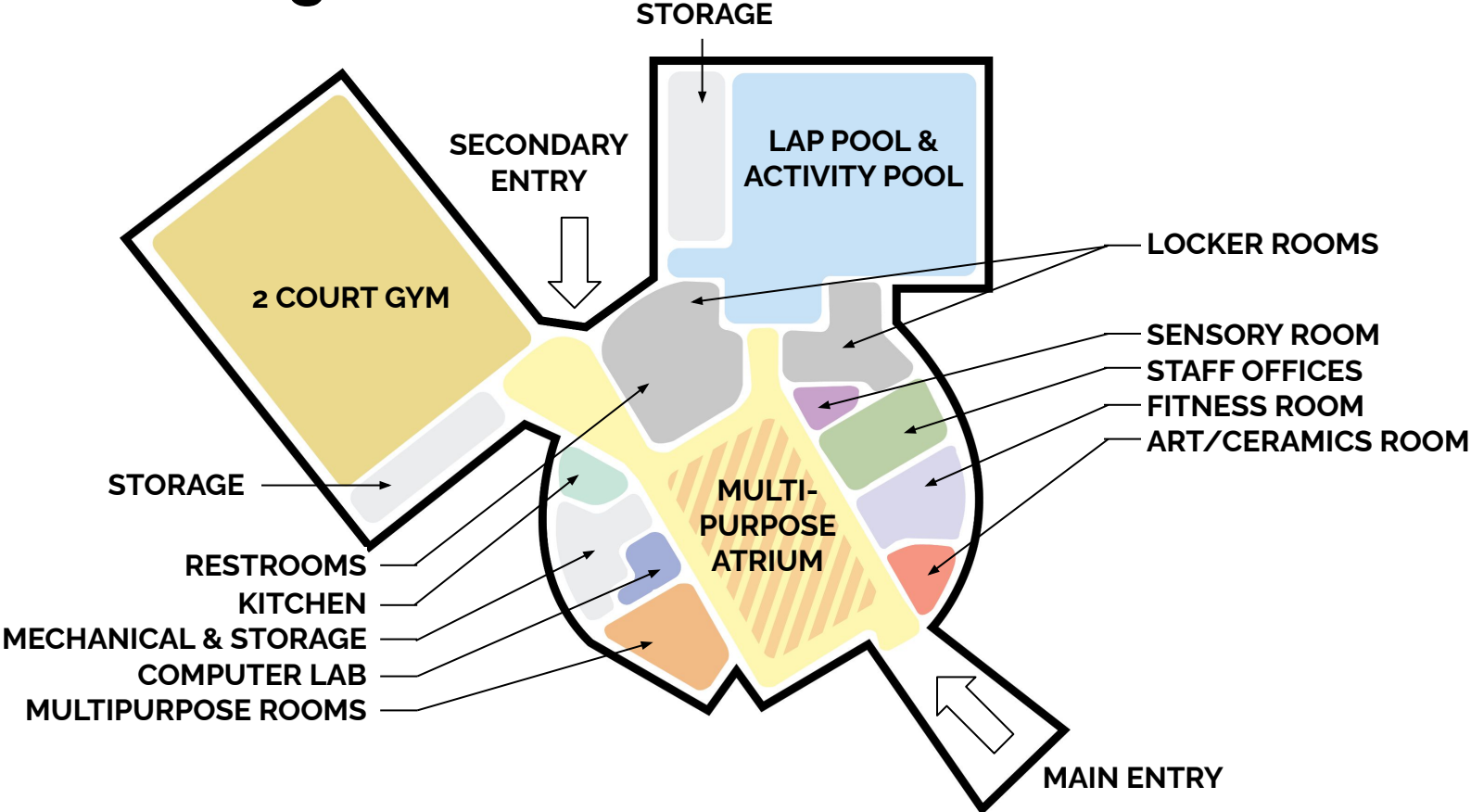


Shower stalls with benches and changing area

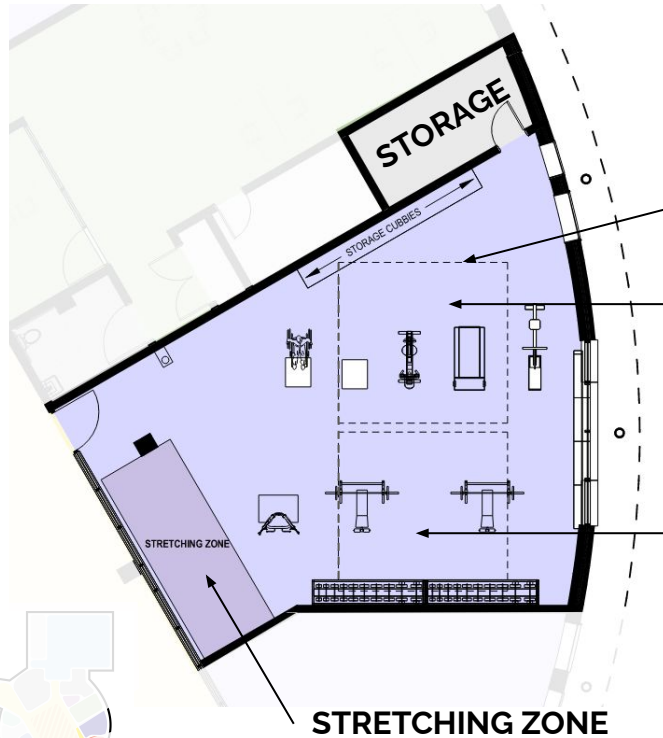


Locker room with backed benches and low lockers

Overall Building Plan



Proposed Space: Fitness Room



SKYLIGHTS ABOVE

CARDIO ZONE

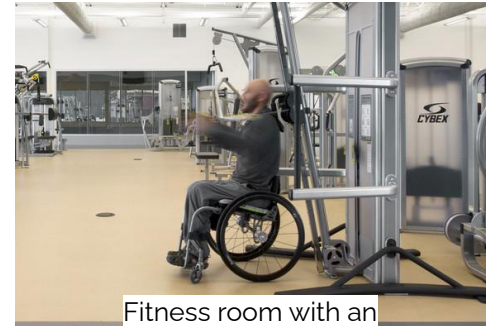
- 2 hand bikes
- 1 stationary bike
- 1 treadmill
- 1 rowing machine

STRENGTH ZONE

- 1 adaptive universal machine
- 2 weight benches

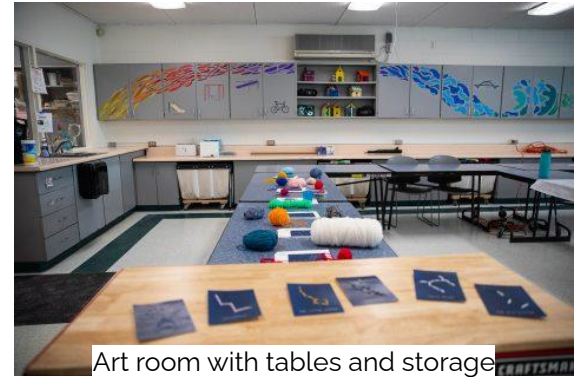
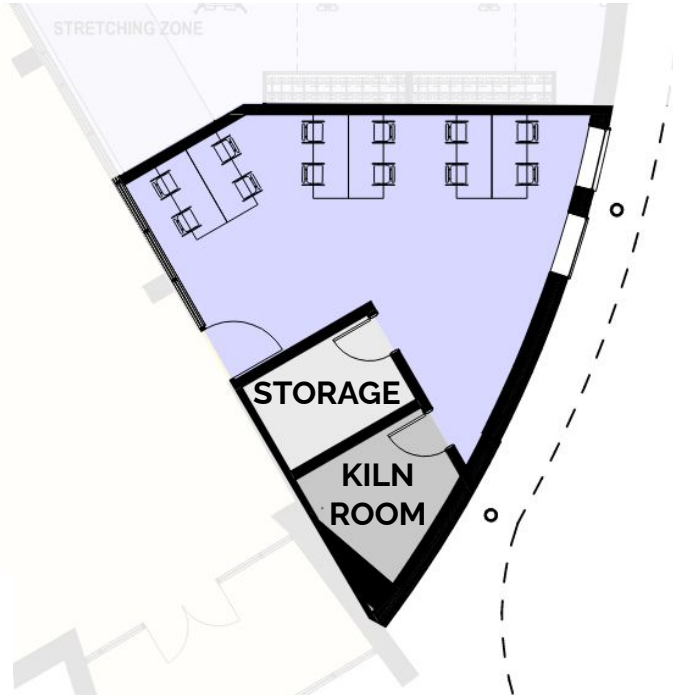


Open room for stretching with storage cubbies

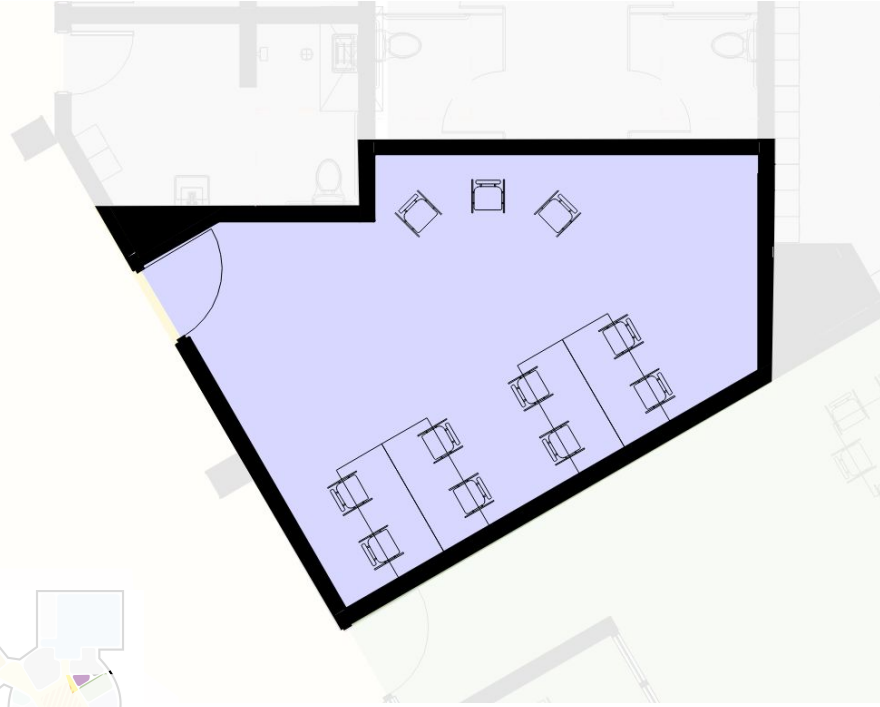


Fitness room with an adaptive universal machine

Proposed Space: Art/Ceramics Room



Proposed Space: Sensory Room

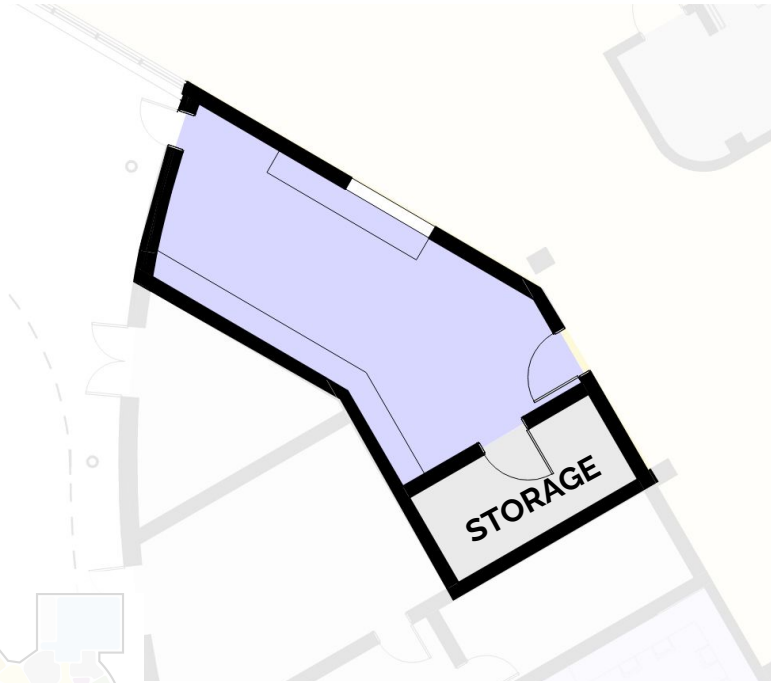


Sensory room at Lincoln Financial Field

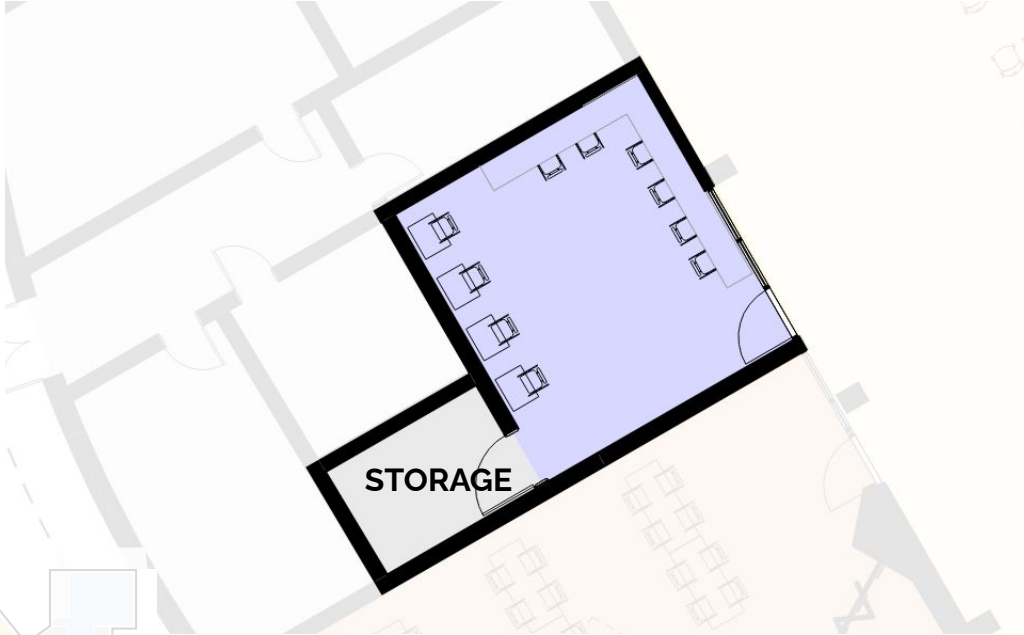


Sensory room with bean bags

Proposed Space: Kitchen



Proposed Space: Computer Lab

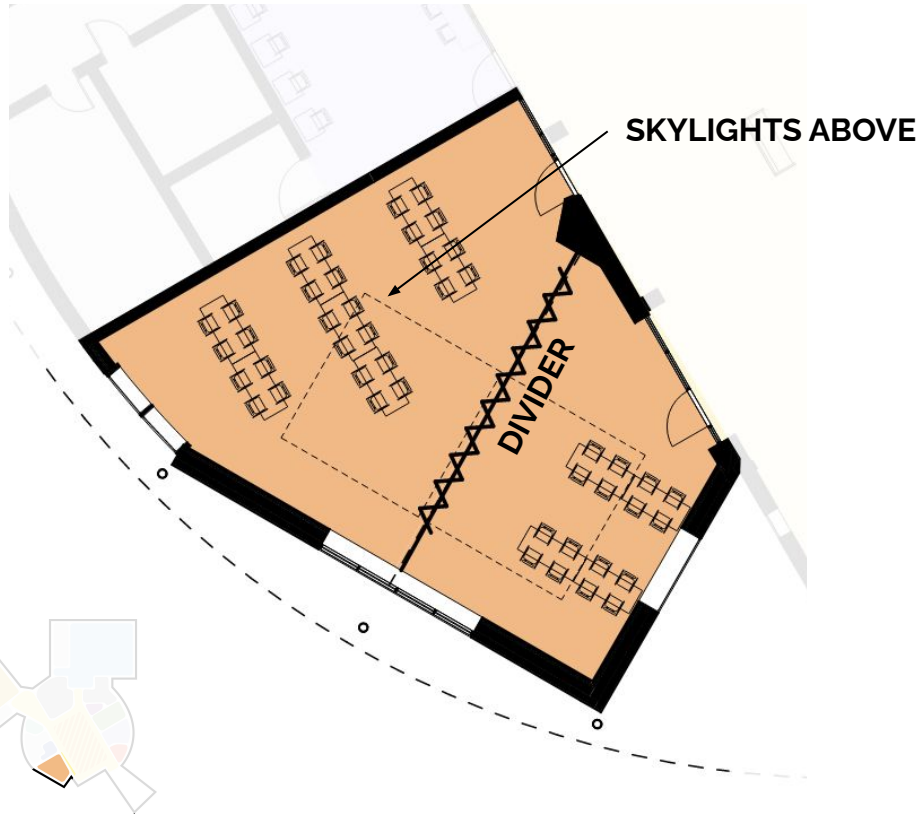


Adjustable height desks
with computer stations



Colorful room with computer stations
and work tables

Proposed Space: Multipurpose Rooms

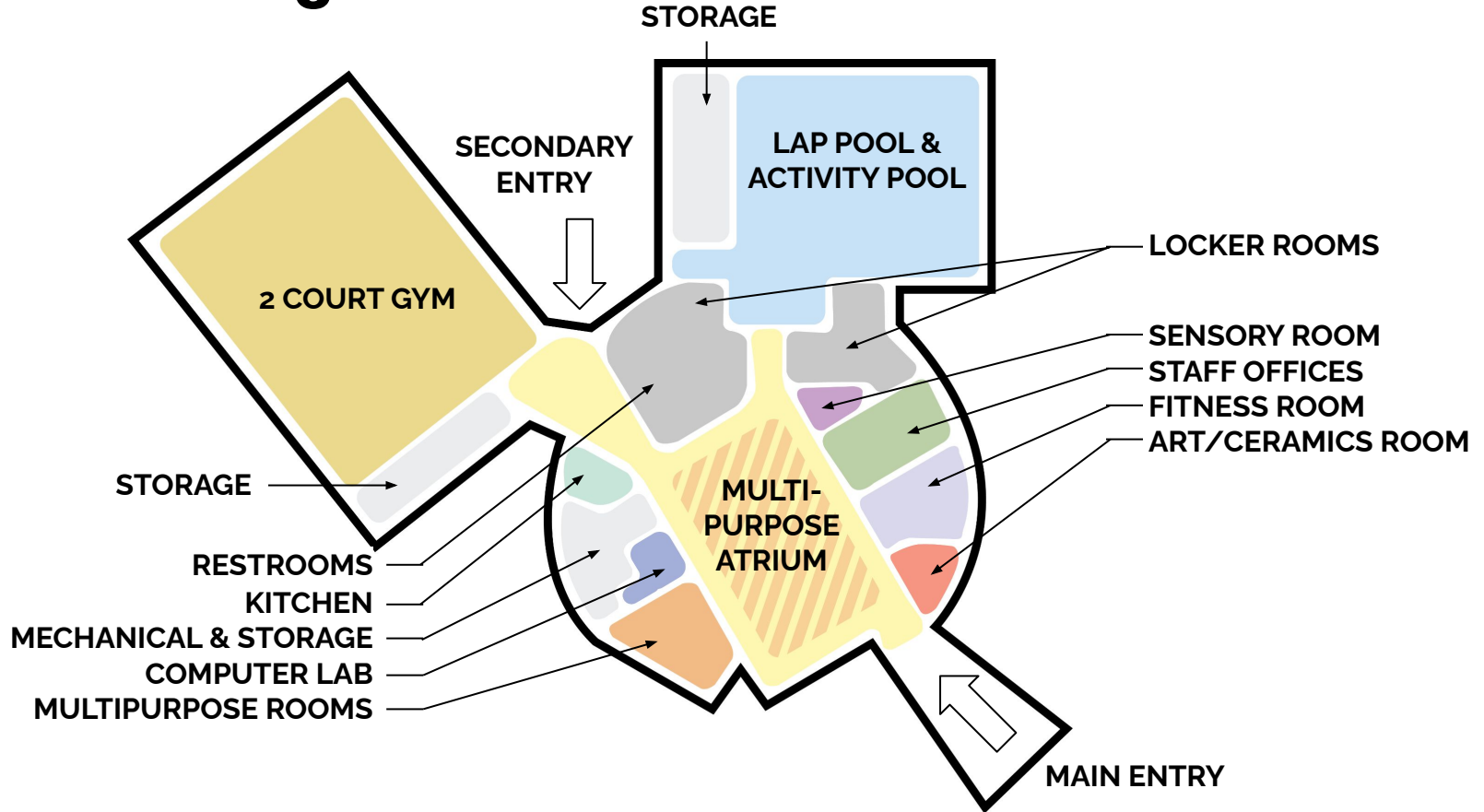


Large tables and whiteboards in a classroom



Kids playing ping pong in a well-lit room

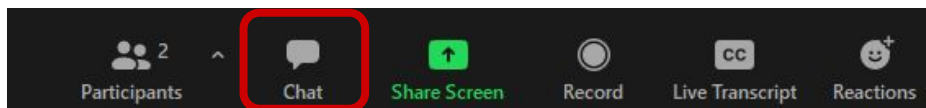
Overall Building Plan



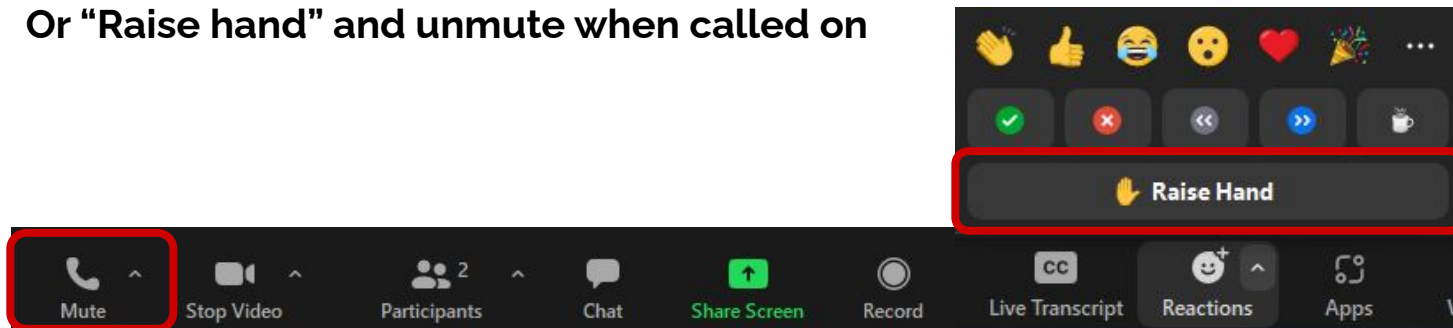
10-Minute Q&A

Questions?

You can click on “chat” to type a question or idea



Or “Raise hand” and unmute when called on



5. Breakout Design Stations

Breakout Design Stations

Share your thoughts and priorities for the new facility! You will be placed in a breakout room with a member of the DIGSAU and Rebuild teams to ask questions and share ideas. Your discussion will focus on the following topics:

- Pool
- Gym
- Additional Activity Spaces (Arts/Ceramics, Fitness, Sensory)
- Carousel House and Parkside Memories
- The Look and Feel of the New Facility

Next Steps

Next Steps

- Ask friends to sign up for the Carousel House Rebuild newsletter (<https://tinyurl.com/chstayupdated>) and check out the project website at www.carouselhouse rebuild.org
- Complete this evaluation survey (<https://tinyurl.com/carouselevel>) to let us know what you think about the design and engagement process at this Rebuild site
- Check your email next week for a recording of this meeting
- Stay tuned for the next design workshop later this summer as the site and building plans continue to evolve!

Thank You! Stay In Touch!

- **Rebuild**

- Amanda Colon-Smith, Amanda.Colon-Smith@phila.gov
- Rebuild, rebuild@phila.gov

- **Community Capacity Builders**

- Donna Griffin, donna@ccbconsult.org
- Jenny Chen, jenny@ccbconsult.org