

Ez Signs, LLC
2177 Bennett Road
Philadelphia, PA 19116
Tele: 1(866) 349- 5444
FAX: (215) 676-3269
service@signsinstall.com

EZ SIGNS INC
1 (866) FIX-LIGHT

March 3, 2023

To whom it may concern,

Proposed Sign installation for Faherty located 1600 Walnut St, Phila, PA

The scope of work includes:

B - Install one (1) statically LED-lit accessory wall sign under second floor window sill.

5.11 SQ FT

D - Install two (2) window graphics, 1.3 SQ FT each

If you have any questions, please feel free to contact me anytime!

Natalya Atroshyna
EZ SIGNS LLC
2177 Bennett Road
Philadelphia, PA 19116
p. 267-406-0273
e. permits@signsinstall.com

PROJECT SCHEDULE

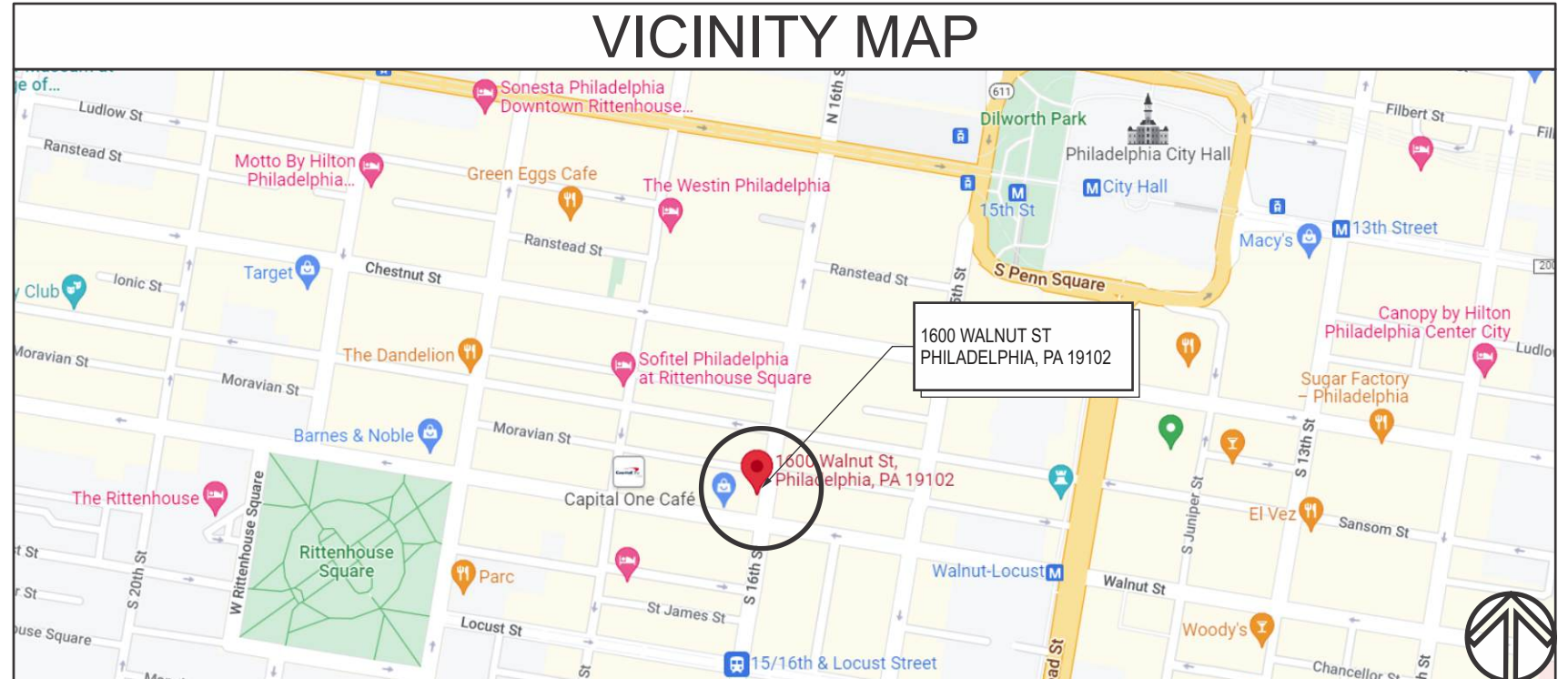
SIGN TYPE/ DESCRIPTION:	QTY.:	
B. ILLUM. EDGE-LIT CH LETTERS	ONE (1)	
D WINDOW VINYL GRAPHICS	TWO (2)	

PROJECT:

FAHERTY

1600 WALNUT ST
PHILADELPHIA, PA 19102

VICINITY MAP





ILLUM. EDGE-LIT CH LETTERS
w BKGRD PANEL

SIGN
B

WINDOW VINYL GRAPHIC

SIGN
D1

WINDOW VINYL GRAPHIC

SIGN
D2

Walnut Street Elevation



Install one (1) statically LED-lit accessory wall sign under second floor window sill. 5.11 SQ FT

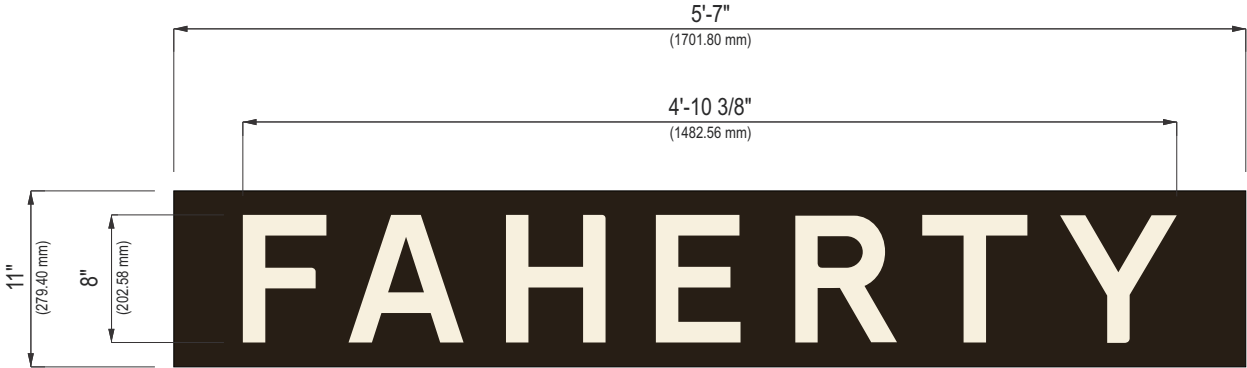
ILLUM. EDGE-LIT CH LETTERS w BKGRD PANEL



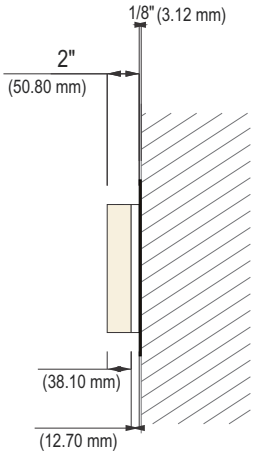
SCALE: 1"=1'-0"

QTY.: ONE (1)

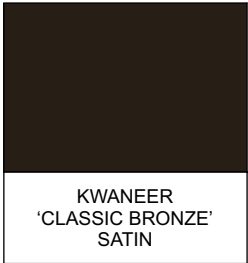
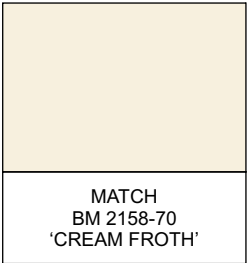
AREA: 11.0" x 67" = 5.11' \sphericalangle



TYP. FRONT



TYP. SIDE

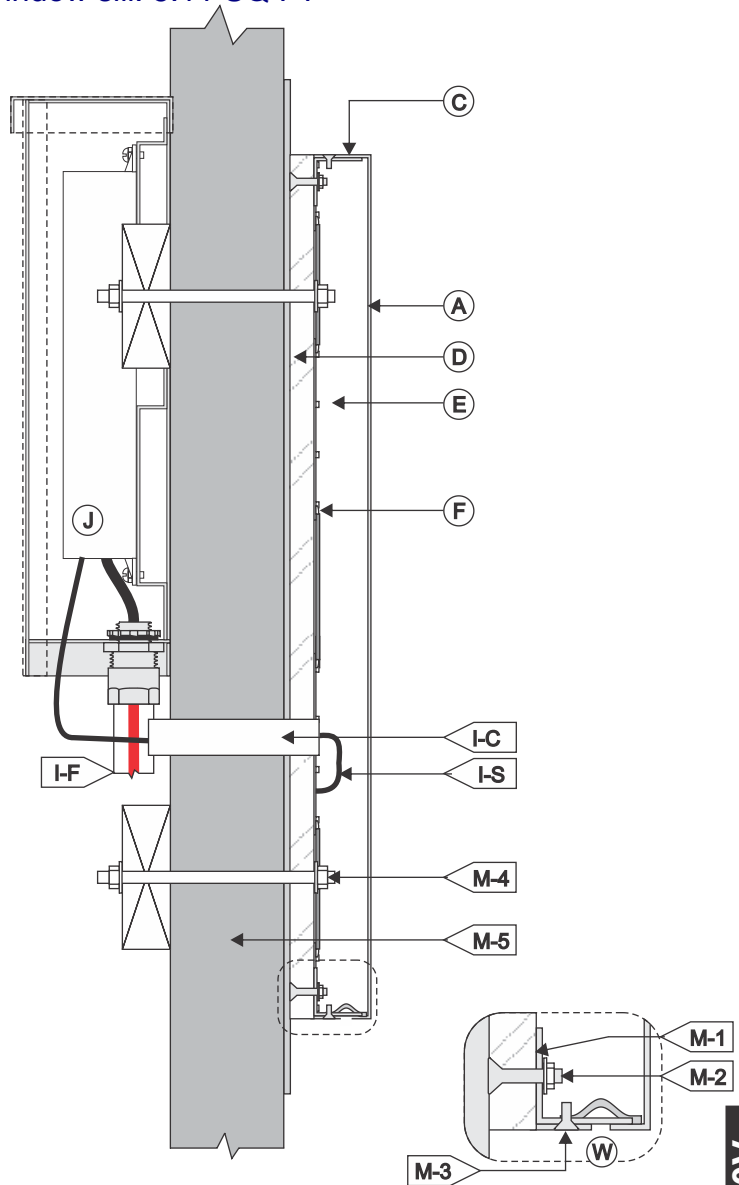


Install one (1) statically LED-lit accessory wall sign under second floor window sill. 5.11 SQ FT

ILLUM. EDGE-LIT CH LETTERS w BKGRD PANEL - SECTION DETAIL


B-1

SCALE: NTS



(A) FACE	
MATERIAL:	METAL
COLOR/FINISH:	MATCH BM 2158-70 'CREAM FROTH' / SATIN
(C) RETURNS	
DEPTH:	2" O.A. ASSEMBLED
MATERIAL:	METAL
COLOR/FINISH:	MATCH BM 2158-70 'CREAM FROTH' / SATIN
(D) BACKS:	
MATERIAL:	1/2" CLEAR ACRYLIC, SANDED RETURNS.
VINYL:	BLOCK OUT (WHITE STICKY SIDE TOWARDS LETTER)
(E) INSIDE OF CAN	
COLOR:	WHITE
(F) ILLUMINATION:	
TYPE:	STANDARD 6500K WHITE LEDS
ALL WIRES TO BE TERMINATED W/ A MECHANICAL UL LISTED FASTENER	
(G) BKGRD PANEL	
MATERIAL:	1/8" METAL
COLOR/FINISH:	KWANEER 'CLASSIC BRONZE' / SATIN

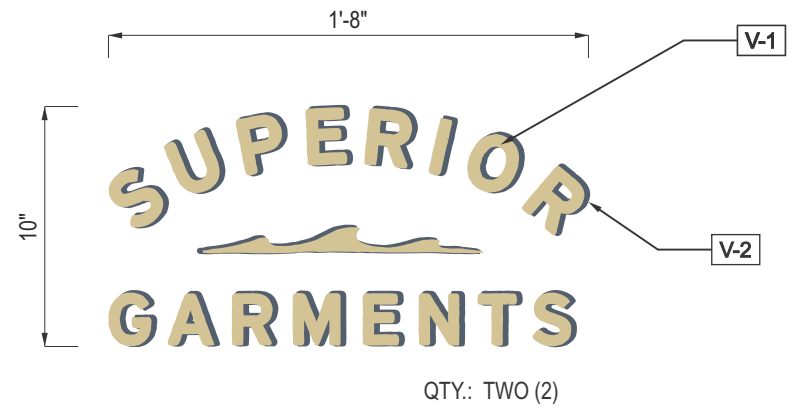
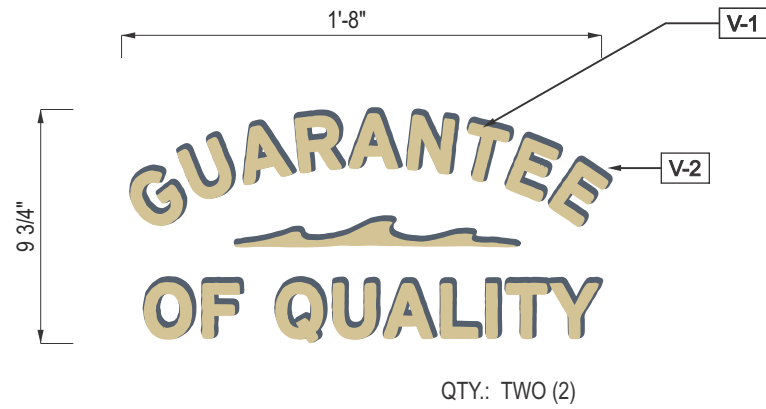
(I) WIRING	
I-C	1/2" O.D. TRUE KONEK PVC TUBE
I-F	TO ELECTRICAL FEED
I-S	U.L. APPROVED LOW VOLTAGE CLASS II WIRING
ALL CONNECTIONS TO BE IN WATERPROOF BOXES	
(J) POWER SUPPLY	
TYPE:	REMOTE LED POWER SUPPLY HOUSE IN FRONT
ACCESS WEATHER-PROOF LED POWER SUPPLY BOX.	
VOLTAGE:	120V
(M) MOUNTING SEE MOUNTING NOTE.	
M-1	1" ALUM. ANGLE VERSALOC TO BACK.
M-2	FLUSH-FITTING MECH. FASTENER.
M-3	HOLD CLOSE SCREW
M-4	10-24 ALL-THREAD STUD, NUT & WASHER
M-5	EXISTING SIGN BAND
(W) WEEP HOLES: 1/4" DIA. WITH COVER	

120V INSTALL	<ol style="list-style-type: none"> 1. CUSTOMER G.C. TO PROVIDE ADEQUATE WOOD OR MTL. BLOCKING IN CORRELATION W/ FACADE FRAMING AS REQUIRED. 2. INSTALLER IS TO V.I.F. & PROVIDE THE PROPER NON-CORROSIVE MOUNTING HARDWARE TO ENSURE SAFE INSTALLATION. 3. ALL EXTERIOR FACADE PENETRATIONS TO BE WATERTIGHT. 4. INSTALLATION TO MEET CURRENT N.E.C., U.L. & LOCAL CODES. LOCATION OF THE DISCONNECT SWITCH AFTER INSTALLATION SHALL COMPLY WITH ARTICLE 600.6(A) (1) OF THE NATION ELECTRICAL CODE 	ELECTRICAL	<ol style="list-style-type: none"> 1. ALL ELECTRICAL COMPONENTS TO BE U.L. APPROVED. 2. CUSTOMER IS RESPONSIBLE FOR ONE (1) 120v/ 20a DEDICATED CIRCUIT w/ GROUND PER SIGN TO WITHIN 6' OF SIGN. 3. THIS SIGN IS INTENDED TO BE INSTALLED IN ACCORDING W/ THE REQUIREMENTS OF ARTICLE 600 OF THE NATIONAL ELECTRICAL CODE AND/OR OTHER APPLICABLE LOCAL CODES. THIS INCLUDES PROPER GROUNDING & BONDING OF THE SIGN. 	FABRICATOR	<ol style="list-style-type: none"> 1. PLACEMENT OF LIGHTING ELEMENTS FOR OPTIMUM ILLUMINATION OF SIGN TO BE DETERMINED IN PRODUCTION. 2. MANUFACTURER & U.L. LABELS TO BE APPLIED & VISIBLE FROM THE GROUND. LOCATED ON THE LAST CHANNEL LETTER OR END OF THE SIGN BOX/FREESTANDING SIGN 	 ALL ELECTRICAL COMPONENTS ARE TO BE UL APPROVED
---------------------	---	-------------------	---	-------------------	--	---

Install two (2) window graphics, 1.3 SQ FT each

DOOR VINYL GRAPHIC

SCALE: 3"=1'-0"



VINYL MATRIX		
V-1	VINYL	GOLD VINYL
	FINISH	OPAQUE
	APPLIES:	1st SURFACE
V-2	VINYL	MATCH BM HC-155 'NEWBURYPORT BLUE'
	FINISH	OPAQUE
	APPLIES:	1st SURFACE



1600 WALNUT ST, PHILADELPHIA, PA 19102



1600 WALNUT ST, PHILADELPHIA, PA 19102



1600 WALNUT ST, PHILADELPHIA, PA 19102





USE THE BEST BIDDING METHOD
FOR YOUR PROJECT
215-568-8000
Contact
Scott Lewis

NO TURN ON RED



1600 WALNUT ST, PHILADELPHIA, PA 19102



DON'T BLOCK
THE BOX

OPENING
FALL 2022

FAHERTY



1600 WALNUT ST, PHILADELPHIA, PA 19102



MEXICAN
STARBUCKS
COFFEE

LEASE
215-568-8000

LEASE
215-568-8000

rag & bone



1600 WALNUT ST, PHILADELPHIA, PA 19102

