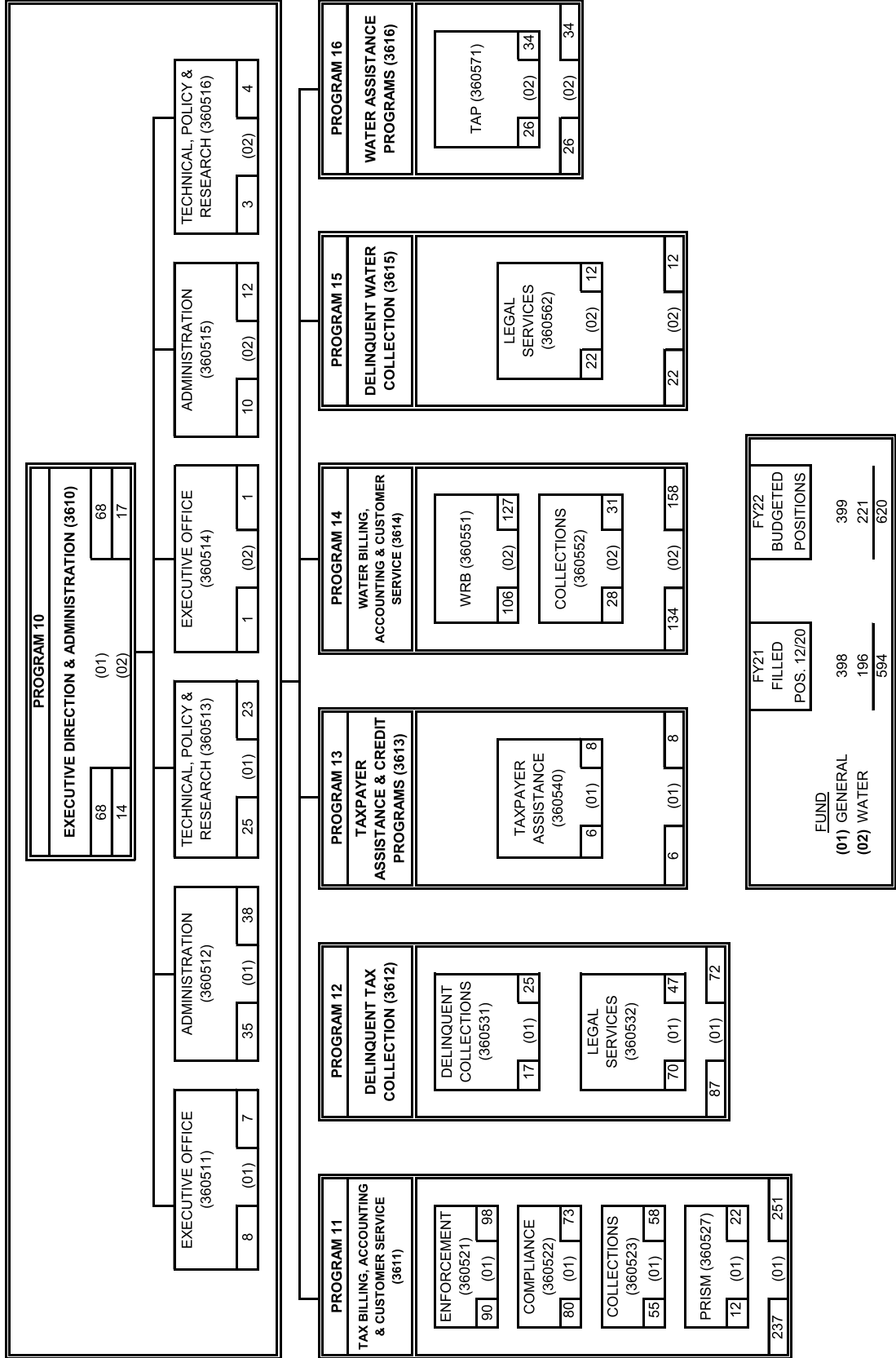


CITY OF PHILADELPHIA

ORGANIZATION CHART (ALL FUNDS) BY PROGRAM

FISCAL 2022 OPERATING BUDGET

Department	No.	36
REVENUE		



CITY OF PHILADELPHIA
FISCAL 2022 OPERATING BUDGET

SCHEDULE 100
LIST OF POSITIONS
BY PROGRAM

Department REVENUE	No. 36	Program TAX BILLING, ACCOUNTING & CUSTOMER SERVICE	No. 11
Fund GENERAL	No. 01		

Line No. (1)	Class Code (2)	Title (3)	Salary Range (in dollars) (4)	Fiscal 2020 Actual Pos. 6/30/20 (5)	Fiscal 2021 Budgeted Positions (6)	Increment Run -PPE 12/21/20 (7)	Fiscal 2022 Budgeted Positions (8)	Annual Salary 7/1/21 (9)	Increase (Decrease) (Col. 8 less Col. 6) (10)
<u>ENFORCEMENT DIVISION (360521):</u>									
1	1B10	Account Clerk	38,170 - 41,540	1	1	1	1	40,414	
2	2L32	Administrative Specialist 2	53,368 - 68,619	1	1	1	1	70,044	
3	2B10	Assistant Revenue Collection Manager	50,220 - 64,550	4	4	4	4	214,061	
4	1A04	Clerk 3	40,589 - 44,289	1	1				(1)
5	2B02	Collection Customer Representative	40,589 - 44,289	49	45	49	56	2,248,688	11
6	2B04	Collection Representative Supervisor	42,934 - 55,193	13	12	11	12	658,267	
7	1D41	Data Services Support Clerk	37,067 - 40,288	4	1	4	5	195,667	4
8	2B11	Revenue Collection Manager	60,939 - 78,333	6	6	3	6	271,543	
9	2B18	Revenue Collection Representative	41,677 - 45,524	10	10	12	12	559,188	2
10	2B20	Revenue Collections Officer 1	79,414 - 102,110	1	1		1	86,312	
11	1A37	Service Representative	37,067 - 40,288	6	10	5			(10)
12	2B29	Tax Assessor Supervisor	44,573 -57,301	1					
SUBTOTAL ENFORCEMENT DIVISION				97	92	90	98	4,344,184	6
<u>COMPLIANCE DIVISION (360522):</u>									
13	1B10	Account Clerk	38,170 - 41,540	1	1	1	1	40,414	
14	A620	Admin. of Tax Enforcement and Investigations	97,850	1	1	1	1	97,850	
15	1A04	Clerk 3	40,589 - 44,289	1	1	1	1	45,114	
16	2B02	Collection Customer Representative	40,589 - 44,289	9	10	11	9	393,461	(1)
17	2B04	Collection Representative Supervisor	42,934 - 55,193	2	3	3	1	56,218	(2)
18	1D41	Data Services Support Clerk	37,067 - 40,288		4	1			(4)
19	2B35	Director of Tax Compliance (exempt)	114,900		1		1	114,900	
20	1A03	Office Clerk 2	34,342 - 37,130	2	2	2	2	75,510	
21	2B11	Revenue Collection Manager	60,939 - 78,333	2	2	2	2	151,017	
22	2B18	Revenue Collection Representative	41,677 - 45,524	2	2	1			(2)
23	2B31	Revenue Examiner 1	41,886 - 53,848	5	3	6	1	53,848	(2)
24	2B32	Revenue Examiner 2	53,368 - 68,619	9	10	10	14	1,012,762	4
25	2B33	Revenue Examiner 3	64,837 - 83,355	5	4	4	5	373,965	1
26	2B34	Revenue Examiner 4	74,416 - 95,673	1	1	1	1	96,898	
27	2A05	Revenue Examiner Trainee	50,200	2	5		1	50,200	(4)
28	6E25	Revenue Investigation Supervisor	42,934 - 55,193	3	3	3	3	165,389	
29	6E23	Revenue Investigator	41,677 - 45,524	4	6	6	6	277,895	
30	1A37	Service Representative	37,067 - 40,288			1			
31	2B28	Tax Assessor	42,769 - 46,786	14	13	13	14	622,343	1
32	2B29	Tax Assessor Supervisor	44,573 -57,301	4	5	4	5	289,444	
SUBTOTAL COMPLIANCE DIVISION				67	77	71	68	3,917,228	(9)

71-531 (Program Based Budgeting Version)

CITY OF PHILADELPHIA
FISCAL 2022 OPERATING BUDGET

SCHEDULE 100
LIST OF POSITIONS
BY PROGRAM

Department REVENUE	No. 36	Program WATER BILLING, ACCT. & CUSTOMER SRVC.	No. 14
Fund WATER	No. 02		

Line No. (1)	Class Code (2)	Title (3)	Salary Range (in dollars) (4)	Fiscal 2020 Actual Pos. 6/30/20 (5)	Fiscal 2021 Budgeted Positions (6)	Increment Run -PPE 12/21/20 (7)	Fiscal 2022 Budgeted Positions (8)	Annual Salary 7/1/21 (9)	Increase (Decrease) (Col. 8 less Col. 6) (10)
WATER REVENUE BUREAU (360551)									
Accounting Unit									
1	1B10	Account Clerk	38,170 - 41,540	2	2	2	2	78,147	
2	2A06	Accountant	46,862 - 60,240	11	11	10	13	654,650	2
3	2A05	Accountant/Revenue Examiner Trainee	50,200	1	2				(2)
4	2A07	Accounting Supervisor	60,939 - 78,333	4	4	4	4	294,394	
5	2A08	Accounting Transaction Supervisor	64,837 - 83,355	3	3	3	3	245,163	
6	1A22	Clerical Supervisor 2	42,769 - 46,786	1	1		1	41,930	
7	1A04	Clerk 3	40,589 - 44,289	11	11	11	11	465,544	
8	1D41	Data Service Support Clerk	37,067 - 40,288	1	1	1	1	39,225	
9	2A01	Financial Technician	37,983 - 48,833	2	2	2	2	90,432	
10	2A21	Revenue Accounting Manager	74,416 - 95,673	1	1	1	1	93,797	
Subtotal Accounting Unit				37	38	34	38	2,003,282	
Administrative Operations Unit									
11	2L11	Administrative Assistant (Confidential)	42,934 - 55,193	1	1	1	1	55,193	
12	1D59	Computer User Support Specialist	43,857 - 48,063	2					
13	2B21	Revenue Collection Officer 2	92,407 - 118,800	1	1	1	1	118,800	
Subtotal Administrative Operations Unit				4	2	2	2	173,993	
Collection Operations Unit									
14	2B10	Assistant Revenue Collection Manager	50,220 - 64,550		1	1	1	50,220	
15	2B02	Collection Customer Representative	40,589 - 44,289	15	16	15	22	868,280	6
16	2B04	Collection Representative Supervisor	42,934 - 55,193	3	5	4	5	250,791	
17	1D41	Data Service Support Clerk	37,067 - 40,288	5	5	4	5	195,841	
18	2B11	Revenue Collection Manager	60,939 - 78,333		1	1	1	68,269	
19	2B18	Revenue Collection Representative	41,677 - 45,524	6	4	4	4	175,924	
20	1A37	Service Representative	37,067 - 40,288		6				(6)
Subtotal Collection Operations Unit				29	38	29	38	1,609,325	
Customer Operations Unit									
21	1A22	Clerical Supervisor 2	42,769 - 46,786	1		1	1	46,786	1
22	2B02	Collection Customer Representative	40,589 - 44,289	19	20	19	24	955,610	4
23	2B04	Collection Representative Supervisor	42,934 - 55,193	3	3	3	3	150,475	
24	1D41	Data Service Support Clerk	37,067 - 40,288	3	4	3	4	153,647	
25	2B11	Revenue Collection Manager	60,939 - 78,333	1	1	1	1	68,269	
26	1A37	Service Representative	37,067 - 40,288	3	5	2			(5)
Subtotal Customer Operations Unit				30	33	29	33	1,374,787	

71-531 (Program Based Budgeting Version)

CITY OF PHILADELPHIA
FISCAL 2022 OPERATING BUDGET

SCHEDULE 100
LIST OF POSITIONS
BY PROGRAM

Department				No.	Program				No.
REVENUE				36	WATER BILLING, ACCT. & CUSTOMER SRVC.				14
Fund				No.					
WATER				02					
Line No.	Class Code	Title	Salary Range	Fiscal 2020 Actual Pos. 6/30/20	Fiscal 2021 Budgeted Positions	Increment Run -PPE 12/21/20	Fiscal 2022 Budgeted Positions	Annual Salary 7/1/21	Increase (Decrease) (Col. 8 less Col. 6)
(1)	(2)	(3)	(4)	(5)	(6)	(7)	(8)	(9)	(10)
Technical Operations Unit									
27	2B02	Collection Customer Representative	40,589 - 44,289	2	2	2	2	80,732	
28	1D41	Data Service Support Clerk	37,067 - 40,288	3	3	3	3	117,675	
29	6E26	Revenue Investigation Manager	47,081 - 60,534		1		1	53,808	
30	6E25	Revenue Investigation Supervisor	38,708 - 49,761	2	2	2	2	102,209	
31	6E23	Revenue Investigator	38,702 - 42,274	5	8	5	8	357,048	
Subtotal Technical Operations Unit				12	16	12	16	711,472	
Total Water Revenue Bureau				112	127	106	127	5,872,859	
PAYMENT PROCESSING (360552)									
Administrative Unit									
32	2B10	Assistant Revenue Collection Manager	50,220 - 64,550	1	1		1	70,859	
33	2B02	Collection Customer Representative	40,589 - 44,289		1				(1)
34	D215	Deputy City Solicitor 2	58,193 - 85,093	1			1		
35	2B11	Revenue Collection Manager	60,939 - 78,333				1		
Subtotal Administrative Unit				2	2	2	1	70,859	(1)
Cashiering Unit									
36	1D41	Data Service Support Clerk	37,067 - 40,288	1	1	1	2	75,219	1
37	1B81	Payment Processing Clerk	37,067 - 40,288	10	12	10	11	421,846	(1)
38	1B83	Payment Processing Supervisor	43,857 - 48,063		1	1	1	47,451	
39	1B82	Senior Payment Processing Clerk	39,379 - 42,914	3	3	2	3	126,219	
Subtotal Cashiering Unit				14	17	14	17	670,735	
Exceptions Processing Unit									
40	2B04	Collection Representative Supervisor	42,934 - 55,193	1	1	1	1	54,111	
41	2B02	Collection Customer Representative	40,589 - 44,289	3	2	2	2	84,888	
42	1A37	Service Representative	37,067 - 40,288		1	2	2	74,134	1
Subtotal Exceptions Processing Unit				4	4	5	5	213,133	1
Incoming Mail Unit									
43	1A21	Clerical Supervisor 1	38,170 - 41,540	1	1	1	1	39,539	
44	1A03	Office Clerk 2	34,342 - 37,130	3	3	3	3	109,206	
45	1D41	Data Service Support Clerk	37,067 - 40,288	2	2	2	2	79,513	
46	7L03	Office Equipment Operator	36,340 - 39,498	1	2	1	2	70,564	
Subtotal Incoming Mail Unit				7	8	7	8	298,822	
Total Payment Processing				27	31	28	31	1,253,549	
Program Total				139	158	134	158	7,126,408	

71-531 (Program Based Budgeting Version)

CITY OF PHILADELPHIA

ORGANIZATION CHART (ALL FUNDS) BY PROGRAM

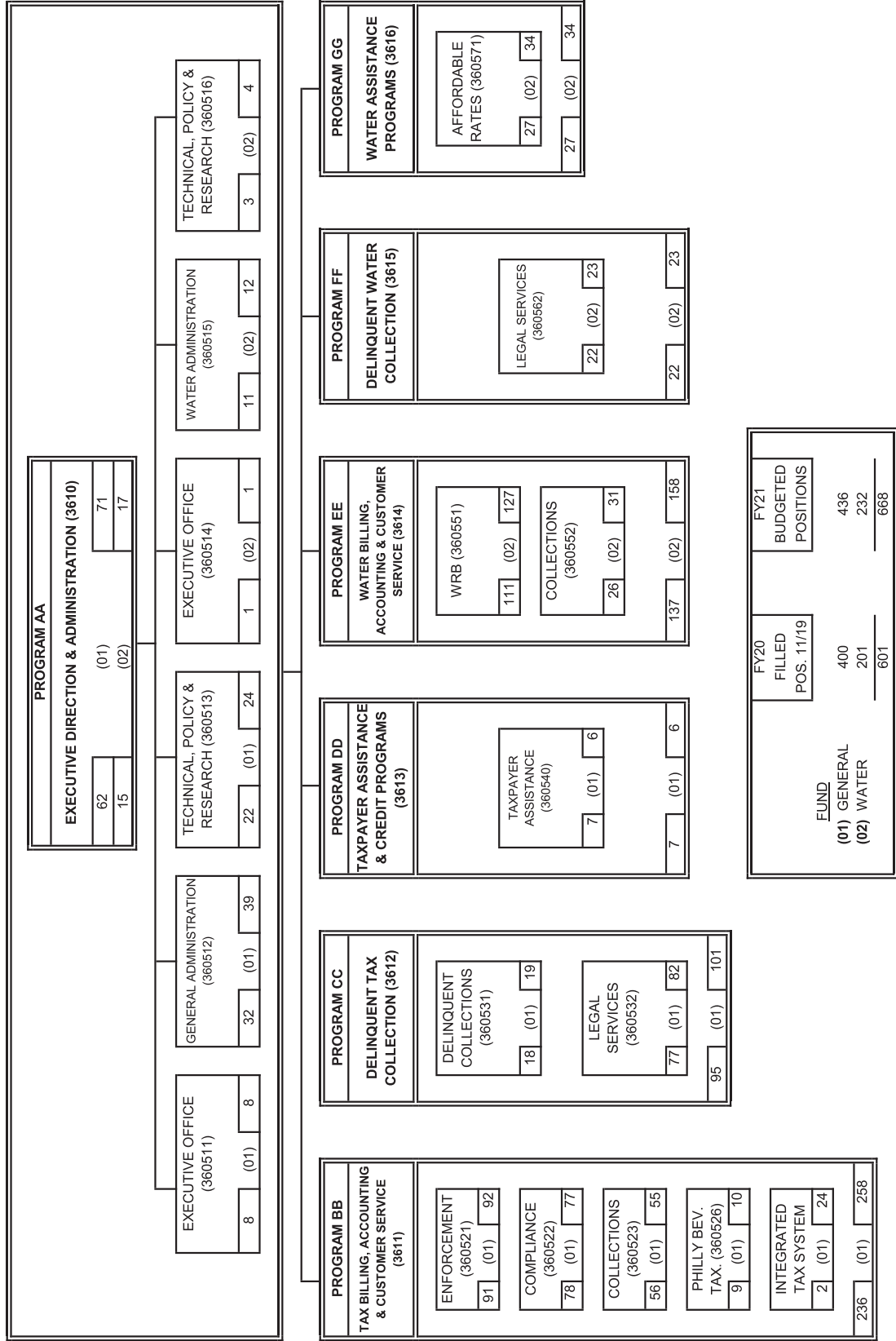
FISCAL 2021 OPERATING BUDGET

Department

REVENUE

No.

36



CITY OF PHILADELPHIA
FISCAL 2021 OPERATING BUDGET

SCHEDULE 100
LIST OF POSITIONS
BY PROGRAM

Department	No.	Program	No.
REVENUE	36	TAX BILLING, ACCOUNTING & CUSTOMER SERVICE	11
Fund	No.		
GENERAL	01		

Line No. (1)	Class Code (2)	Title (3)	Salary Range (in dollars) (4)	Fiscal 2019 Actual Pos. 6/30/19 (5)	Fiscal 2020 Budgeted Positions (6)	Increment Run -PPE 11/24/19 (7)	Fiscal 2021 Budgeted Positions (8)	Annual Salary 7/1/20 (9)	Increase (Decrease) (Col. 8 less Col. 6) (10)
ENFORCEMENT DIVISION (360521):									
1	1B10	Account Clerk	37,422 - 40,725	1	1	1	1	38,515	
2	2L01	Administrative Technician	36,186 - 46,534			1			
3	2L32	Administrative Specialist 2	52,322 - 67,274	1	1	1	1	68,699	
4	2B10	Assistant Revenue Collection Manager	49,235 - 63,284	4		4	4	242,381	4
5	1A02	Office Clerk	33,669 - 36,402		1				(1)
6	1A04	Clerk 3	39,793 - 43,421	2	1	1	1	44,646	
7	2B02	Collection Customer Representative	39,793 - 43,421	25	32	36	45	1,881,253	13
8	2B04	Collection Representative Supervisor	42,092 - 54,111	13	12	12	12	618,547	
9	1D41	Data Services Support Clerk	36,340 - 39,498		3	3	1	39,498	(2)
10	2B11	Revenue Collection Manager	59,744 - 76,797	7	6	6	6	446,043	
11	2B18	Revenue Collection Representative	40,860 - 44,631	12	13	10	10	456,360	(3)
12	2B20	Revenue Collections Officer 1	77,857 - 100,108		1	1	1	84,644	
13	1A37	Service Representative	36,340 - 39,498	35	25	14	10	369,716	(15)
14	2B29	Tax Assessor Supervisor	43,699 - 56,177			1			
15	1A42	Word Processing Specialist 2	36,340 - 39,498	1	1				(1)
SUBTOTAL ENFORCEMENT DIVISION				101	97	91	92	4,290,302	(5)
COMPLIANCE DIVISION (360522):									
16	1B10	Account Clerk	37,422 - 40,725	1	1	1	1	38,515	
17	A620	Admin. of Tax Enforcement and Investigations	97,850			1	1	97,850	1
18	2B10	Assistant Revenue Collection Manager	49,235 - 63,284		1				(1)
19	1A03	Office Clerk 2	33,669 - 36,402			2	2	74,054	2
20	1A04	Clerk 3	39,793 - 43,421	1	1	1	1	44,046	
21	1A12	Clerk Typist 2		1	3				(3)
22	2B02	Collection Customer Representative	39,793 - 43,421	7	9	10	10	381,540	1
23	2B04	Collection Representative Supervisor	42,092 - 54,111	3	2	3	3	164,808	1
24	1D41	Data Services Support Clerk	36,340 - 39,498	2	2	2	4	154,834	2
25	2B35	Director of Tax Compliance (exempt)	99,120 - 111,505	1	1	1	1	117,266	
26	2B11	Revenue Collection Manager	59,744 - 76,797	2	2	2	2	143,649	
27	2B18	Revenue Collection Representative	40,860 - 44,631	1	3	1	2	86,316	(1)
28	2B31	Revenue Examiner 1	41,065 - 52,792	2	4	2	3	159,001	(1)
29	2B32	Revenue Examiner 2	52,322 - 67,274	16	19	11	10	649,017	(9)
30	2B33	Revenue Examiner 3	63,566 - 81,721	4	4	7	4	297,750	
31	2B34	Revenue Examiner 4	72,957 - 93,797				1	72,957	1
32	2B40	Tax and Revenue Conferee	62,016 - 79,727			1			
33	2A05	Revenue Examiner Trainee	49,216	5		5	5	147,648	5
34	6E25	Revenue Investigation Supervisor	42,092 - 54,111	1	2	2	3	104,258	1
35	6E23	Revenue Investigator	40,860 - 44,631	9	9	6	6	191,216	(3)
36	1A37	Service Representative	36,340 - 39,498	2	1				(1)
37	2B28	Tax Assessor	41,930 - 45,869	13	17	16	13	605,624	(4)
38	2B29	Tax Assessor Supervisor	43,699 - 56,177	5	5	4	5	283,887	
39	6D03	Municipal Guard	36,332 - 39,539	1					
SUBTOTAL COMPLIANCE DIVISION				76	86	78	77	3,814,236	(9)

CITY OF PHILADELPHIA
FISCAL 2021 OPERATING BUDGET

SCHEDULE 100
LIST OF POSITIONS
BY PROGRAM

Department				No.	Program				No.
REVENUE				36	WATER BILLING, ACCT. & CUSTOMER SRVC.				14
Fund				No.					
WATER				02					
Line No.	Class Code	Title	Salary Range	Fiscal 2019 Actual Pos. 6/30/19	Fiscal 2020 Budgeted Positions	Increment Run -PPE 11/24/19	Fiscal 2021 Budgeted Positions	Annual Salary 7/1/20	Increase (Decrease) (Col. 8 less Col. 6)
(1)	(2)	(3)	(4)	(5)	(6)	(7)	(8)	(9)	(10)
Water Revenue Bureau (360551):									
Accounting Unit:									
1	1B10	Account Clerk	37,422 - 40,725	2	4	2	2	79,866	(2)
2	2A06	Accountant	45,933 - 59,059	7	9	9	11	623,109	2
3	2A05	Accountant/Revenue Examiner Trainee	49,216	3	4	3	2	98,432	(2)
4	2A07	Accounting Supervisor	59,744 - 76,797	4	4	4	4	303,360	
5	2A08	Accounting Transaction Supervisor	63,566 - 81,721	3	3	3	3	249,238	
6	1A22	Clerical Supervisor 2	41,930 - 45,869		1		1	41,930	
7	1A04	Clerk 3	39,793 - 43,421	11	9	11	11	480,660	2
8	1D41	Data Services Support Clerk	36,340 - 39,498	1	1	1	1	38,456	
9	2A01	Financial Technician	37,238 - 47,875	2	2	2	2	96,375	
10	2A21	Revenue Accounting Manager	72,957 - 93,797	1	1	1	1	95,422	
Subtotal Accounting Unit				34	38	36	38	2,106,848	
Administrative Operations Unit:									
11	2L11	Administrative Assistant (Confidential)	42,092 - 54,111	1	1	1	1	55,736	
12	1D59	Compter User Support Specialist	42,997 - 47,121	2		2			
13	2B11	Revenue Collection Manager	59,744 - 76,797	1	1				(1)
14	2B21	Revenue Collection Officer 2	90,595 - 116,471	1	1	1	1	118,096	
Subtotal Administrative Operations Unit				5	3	4	2	173,832	(1)
Collection Operations Unit:									
15	2B10	Assistant Revenue Collection Manager	49,235 - 63,284				1	59,769	1
16	2B02	Collection Customer Representative	39,793 - 43,421	11	14	12	16	518,423	2
17	2B04	Collection Representative Supervisor	42,092 - 54,111	5	5	4	5	214,930	
18	1D41	Data Services Support Clerk	36,340 - 39,498	3	4	3	5	172,825	1
19	2B11	Revenue Collection Manager	59,744 - 76,797		1		1	74,153	
20	2B18	Revenue Collection Representative	40,860 - 44,631	4	4	5	4	181,224	
21	1A37	Service Representative	36,340 - 39,498	7	8	7	6	233,408	(2)
Subtotal Collection Operations Unit				30	36	31	38	1,454,732	2
Customer Operations Unit:									
22	1A22	Clerical Supervisor 2	41,930 - 45,869		1	1			(1)
22	2B02	Collection Customer Representative	39,793 - 43,421	11	11	14	20	804,519	9
23	2B04	Collection Representative Supervisor	42,092 - 54,111	3	3	3	3	166,608	
24	1D41	Data Services Support Clerk	36,340 - 39,498	4	4	3	4	152,860	
25	2B11	Revenue Collection Manager	59,744 - 76,797	1	2	1	1	74,153	(1)
26	1A37	Service Representative	36,340 - 39,498	11	11	4	5	187,130	(6)
Subtotal Customer Operations Unit				30	32	26	33	1,385,270	1

CITY OF PHILADELPHIA
FISCAL 2021 OPERATING BUDGET

SCHEDULE 100
LIST OF POSITIONS
BY PROGRAM

Department				No.	Program				No.
REVENUE				36	WATER BILLING, ACCT. & CUSTOMER SRVC.				14
Fund				No.					
WATER				02					
Line No.	Class Code	Title	Salary Range	Fiscal 2019 Actual Pos. 6/30/19	Fiscal 2020 Budgeted Positions	Increment Run -PPE 11/24/19	Fiscal 2021 Budgeted Positions	Annual Salary 7/1/20	Increase (Decrease) (Col. 8 less Col. 6)
(1)	(2)	(3)	(4)	(5)	(6)	(7)	(8)	(9)	(10)
Technical Operations Unit:									
27	2B02	Collection Customer Representative	39,793 - 43,421	2	2	2	2	89,092	
28	1D41	Data Services Support Clerk	36,340 - 39,498	3	3	3	3	112,212	
29	6E26	Revenue Investigation Manager	47,081 - 60,534	1	1	1	1	62,159	
30	6E25	Revenue Investigation Supervisor	42,092 - 54,111	2	2	2	2	107,466	
31	6E23	Revenue Investigator	40,860 - 44,631	7	8	6	8	355,656	
Subtotal Technical Operations				15	16	14	16	726,585	
Total Water Revenue Bureau				114	125	111	127	5,847,267	2
Collections Division- Payment Processing (360552):									
Administrative Unit:									
32	2B10	Assistant Revenue Collection Manager	49,235 - 63,284	1	1	1	1	64,309	
33	2B02	Collection Customer Representative	39,793 - 43,421	1	1	1	1	42,845	
Subtotal Administrative Unit				2	2	2	2	107,154	
Cashiering Unit:									
34	1D41	Data Services Support Clerk	36,340 - 39,498	3	1	3	1	37,404	
35	1B81	Payment Processing Clerk	36,340 - 39,498	9	12	9	12	469,840	
36	1B83	Payment Processing Supervisor	42,997 - 47,121	1	1	1	1	43,061	
37	1B82	Senior Payment Processing Clerk	38,607 - 42,073	2	3	3	3	121,846	
Subtotal Cashiering Unit				14	17	15	17	672,151	
Exceptions Processing Unit:									
38	2B04	Collection Representative Supervisor	42,092 - 54,111	1	1	1	1	55,536	
39	2B02	Collection Customer Representative	39,793 - 43,421			2	2	83,223	2
40	1A37	Service Representative	36,340 - 39,498	2	3		1	36,340	(2)
Subtotal Exceptions Processing				3	4	3	4	175,099	
Incoming Mail Unit:									
41	1A21	Clerical Supervisor 1	37,422 - 40,725	1	1	1	1	41,350	
42	1A03	Office Clerk 2	33,669 - 36,402	3	4	3	3	112,081	(1)
43	1A04	Clerk 3	39,793 - 43,421		1				(1)
44	1D41	Data Services Support Clerk	36,340 - 39,498	1	2	1	2	39,498	
45	7L03	Office Equipment Operator	36,340 - 39,498			1	2	72,180	2
Subtotal Incoming Mail Unit				5	8	6	8	265,109	
Total Collections- Payment Processing				24	31	26	31	1,219,513	
Program Total				138	156	137	158	7,066,780	2

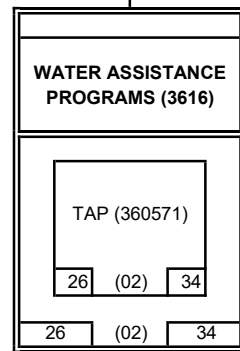
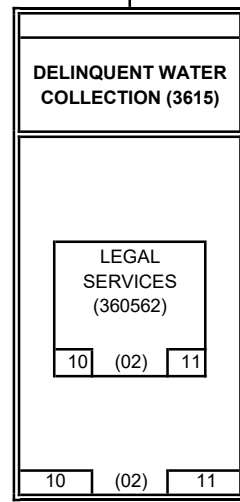
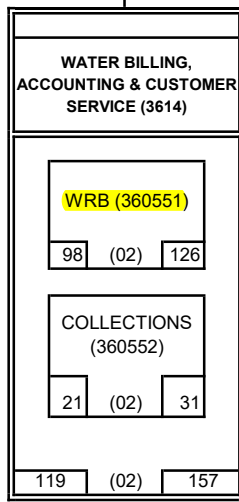
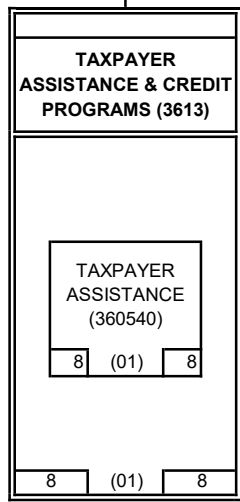
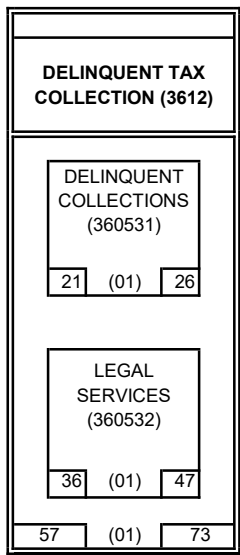
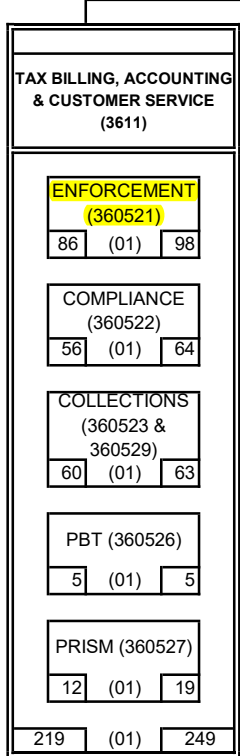
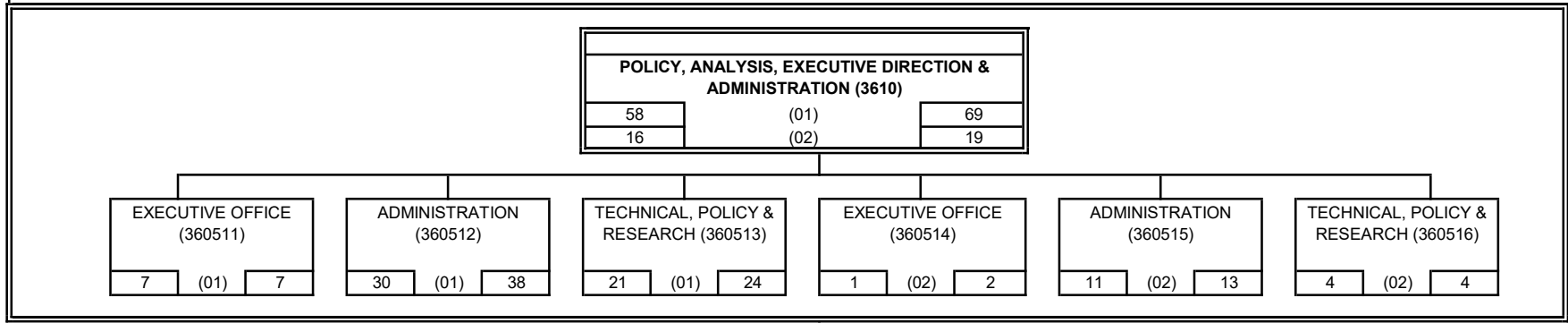
71-531 (Program Based Budgeting Version)

CITY OF PHILADELPHIA

ORGANIZATION CHART (ALL FUNDS) BY PROGRAM

FISCAL 2023 OPERATING BUDGET

Department	No.
Revenue	36



Fund	FY22 FILLED POS. 11/21	FY23 BUDGETED POSITIONS
(01) General	342	399
(02) Water	171	221
	<u>513</u>	<u>620</u>

SECTION 14

CITY OF PHILADELPHIA
FISCAL 2023 OPERATING BUDGET

SCHEDULE 100
LIST OF POSITIONS
BY PROGRAM

Department Revenue	No. 36	Program Tax Billing, Accounting & Customer Service	No. 11
Fund General	No. 01		

Line No. (1)	Class Code (2)	Title (3)	Salary Range (in dollars) (4)	Fiscal 2021 Actual Pos. 6/30/21 (5)	Fiscal 2022 Budgeted Positions (6)	Increment Run -PPE 11/28/21 (7)	Fiscal 2023 Budgeted Positions (8)	Annual Salary 7/1/22 (9)	Increase (Decrease) (Col. 8 less Col. 6) (10)
Enforcement (360521)									
Administrative Unit									
1	2L32	Administrative Specialist 2	56,480 - 72,620	1	1	1	1	72,620	
2	2B02	Collection Customer Representative	42,956 - 46,871	1	1				(1)
3	2B11	Revenue Collection Manager	64,492 - 82,900		1				(1)
4	2B20	Revenue Collection Officer 1	84,044 - 108,065	1	1	1	1	96,050	
5	2B18	Revenue Collection Representative	44,107 - 48,179			1	1	48,179	1
Subtotal Administrative Unit				3	4	3	3	216,849	(1)
Northeast Satellite Office									
6	2B10	Assistant Revenue Collection Manager	53,149 - 68,314	1	1	1	1	68,314	
7	2B02	Collection Customer Representative	42,956 - 46,871	3	3	2	2	89,839	(1)
8	2B04	Collection Representative Supervisor	45,437 - 58,412				1	22,719	1
9	2B18	Revenue Collection Representative	44,107 - 48,179			1	1	48,179	1
Subtotal Northeast Satellite Office				4	4	4	5	229,051	1
North Philly Satellite Office									
10	2B10	Assistant Revenue Collection Manager	53,149 - 68,314				1	53,149	
11	2B02	Collection Customer Representative	42,956 - 46,871	2	2	1	1	46,871	(1)
12	2B18	Revenue Collection Representative	44,107 - 48,179			1	1	48,179	1
Subtotal North Philly Satellite Office				2	3	2	3	148,199	
Intake Unit									
13	2B10	Assistant Revenue Collection Manager	53,149 - 68,314			1	1	64,519	
14	2B02	Collection Customer Representative	42,956 - 46,871	9	11	10	9	454,411	(2)
15	2B04	Collection Representative Supervisor	45,437 - 58,412	3	3	2	3	159,017	
16	2B11	Revenue Collection Manager	64,492 - 82,900	1	1	1	1	69,090	
17	2B18	Revenue Collection Representative	44,107 - 48,179	1	2	1	1	48,179	(1)
18	1A37	Service Representative	39,229 - 42,637				3	39,229	3
Subtotal Intake Unit				14	18	15	18	834,445	
Call Center (Telephone Pool)									
19	2B10	Assistant Revenue Collection Manager	53,149 - 68,314	1	1	1	1	68,314	
20	2B02	Collection Customer Representative	42,956 - 46,871	18	19	17	19	775,973	
21	2B04	Collection Representative Supervisor	45,437 - 58,412	2	4	2	3	175,236	(1)
22	2B11	Revenue Collection Manager	64,492 - 82,900	1	1	1	1	64,492	
23	2B18	Revenue Collection Representative	44,107 - 48,179	3	4	3	3	144,537	(1)
24	1A37	Service Representative	39,229 - 42,637	1					
Subtotal Call Center (Telephone Pool)				26	29	24	27	1,228,552	(2)

71-531 (Program Based Budgeting Version)

CITY OF PHILADELPHIA
FISCAL 2023 OPERATING BUDGET

SCHEDULE 100
LIST OF POSITIONS
BY PROGRAM

Department Revenue	No. 36	Program Water Billing, Accounting and Customer Service	No. 14
Fund Water	No. 02		

Line No. (1)	Class Code (2)	Title (3)	Salary Range (in dollars) (4)	Fiscal 2021 Actual Pos. 6/30/21 (5)	Fiscal 2022 Budgeted Positions (6)	Increment Run -PPE 11/28/21 (7)	Fiscal 2023 Budgeted Positions (8)	Annual Salary 7/1/22 (9)	Increase (Decrease) (Col. 8 less Col. 6) (10)
WATER REVENUE BUREAU (360551)									
Accounting									
1	1B10	Account Clerk	40,396 - 43,963	2	2	2	2	88,551	
2	2A06	Accountant	49,584 - 63,753	9	13	7	9	544,121	(4)
3	2A05	Accountant Trainee	41,326 - 53,127			1	3	104,958	3
4	2A07	Accounting Supervisor	64,492 - 82,900	4	4	3	4	333,453	
5	2A08	Accounting Transaction Supervisor	68,618 - 88,216	4	3	4	4	352,434	1
6	1A22	Clerical Supervisor 2	45,263 - 49,515		1	1	1	50,140	
7	1A04	Clerk 3	42,956 - 46,871	9	11	8	11	499,502	
8	1D41	Data Service Support Clerk	39,299 - 42,637		1		1	42,637	
9	2A01	Financial Technician	40,198 - 51,681	2	2	2	2	104,612	
10	2A21	Revenue Accounting Manager	78,755-101,252	1	1	1	1	103,077	
Subtotal Accounting				31	38	29	38	2,223,485	
Adjudications									
11	2B02	Collection Customer Representative	42,956 - 46,871	6		5	6	217,527	6
12	2B04	Collection Representative Supervisor	45,437 - 58,412	2		1	2	105,438	2
13	1D41	Data Service Support Clerk	39,299 - 42,637	1		2	2	85,274	2
14	2B11	Revenue Collection Manager	64,492 - 82,900	1		1	1	74,520	1
15	2B18	Revenue Collection Representative	44,107 - 48,179	4		4	4	195,616	4
16	1A37	Service Representative	39,229 - 42,637				1	39,229	1
Subtotal Adjudications				14		13	16	717,604	16
Administrative Operations									
17	2L11	Administrative Assistant	45,437 - 58,412	1	1	1	1	60,037	
18	2B21	Revenue Collections Officer 2	97,795 - 125,728	1	1	1	1	127,353	
Subtotal Administrative Operations				2	2	2	2	187,390	
Collection Operations									
19	2B10	Assistant Revenue Collection Manager	53,149 - 68,314		1	1	1	61,746	
20	2B02	Collection Customer Representative	42,956 - 46,871	9	22	9	9	374,025	(13)
21	2B04	Collection Representative Supervisor	45,437 - 58,412	2	5	1	2	116,623	(3)
22	1D41	Data Service Support Clerk	39,299 - 42,637	2	5	2	3	100,923	(2)
23	2B11	Revenue Collection Manager	64,492 - 82,900	1	1	1	1	84,525	
24	2B18	Revenue Collection Representative	44,107 - 48,179		4				(4)
25	1A37	Service Representative	39,229 - 42,637				4	79,104	4
Subtotal Collection Operations				14	38	14	20	816,946	(18)
Customer Operations									
26	1A22	Clerical Supervisor 2	45,263 - 49,515	1	1	1	1	50,140	
27	2B02	Collection Customer Representative	42,956 - 46,871	20	24	17	20	876,720	(4)
28	2B04	Collection Representative Supervisor	45,437 - 58,412	3	3	4	4	232,657	1
29	1D41	Data Service Support Clerk	39,299 - 42,637	3	4	3	4	171,173	
30	2B11	Revenue Collection Manager	64,492 - 82,900	1	1	1	1	84,525	
31	1A37	Service Representative	39,229 - 42,637				4	78,458	4
Subtotal Customer Operations				28	33	26	34	1,493,673	1

71-531 (Program Based Budgeting Version)