

BROWN EXPEDITING SERVICES

November 9, 2022

Philadelphia Art Commission
1515 Arch Street, 13th Floor
Philadelphia, PA 19102

Re: 200-219 N 15th St.

Dear Sign Committee,

Please see the attached drawing for the proposed mural and a sign that would be accessory to their business. They will be illuminated stud mounted aluminum letters.

Overall dimensions: 130"H x 223"W

- letter height: 37" H
- logomark: 25" W x 130" H

Please note that the street level signage will be on a different application.

If you have any questions or need any further information, please contact me.

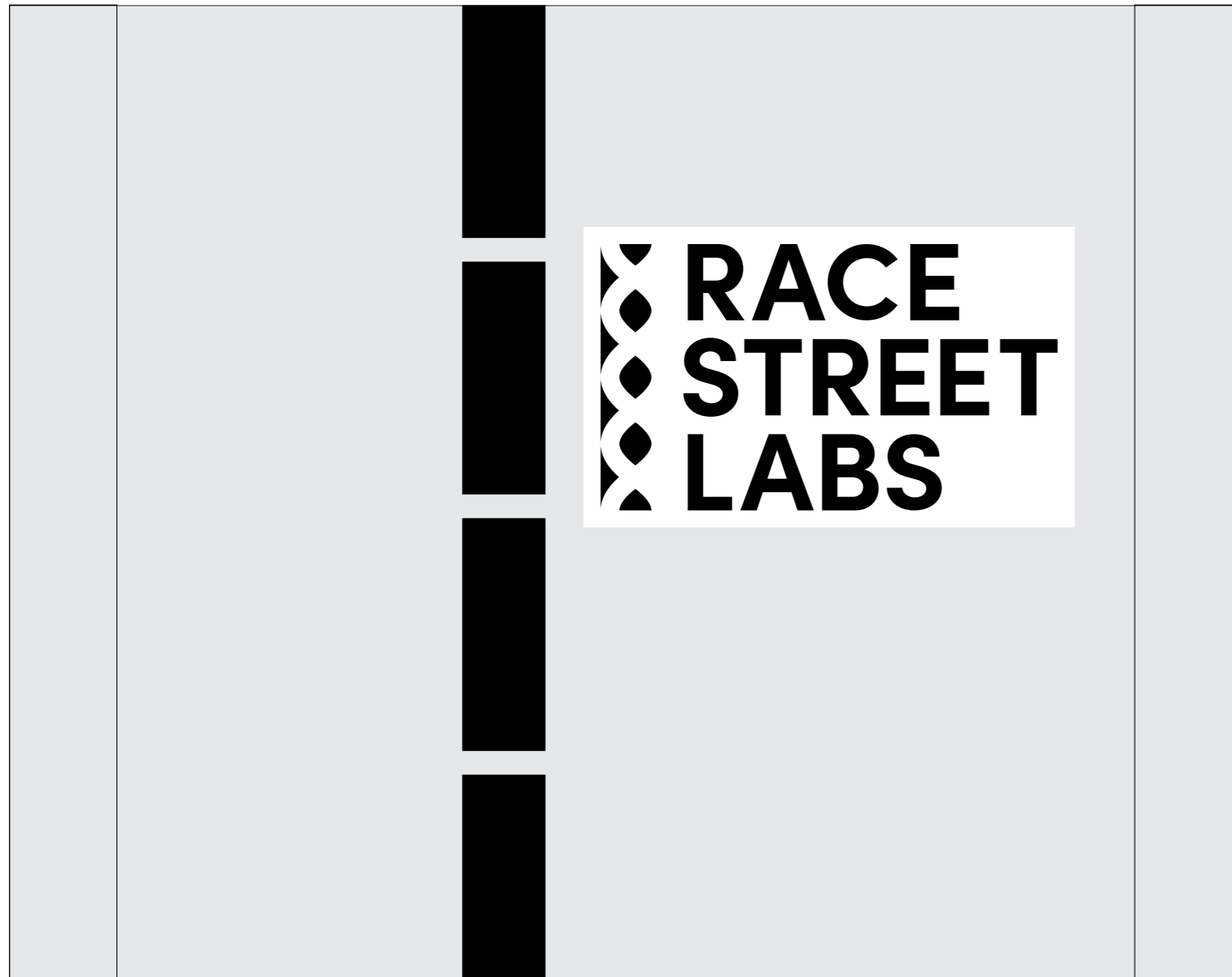
Thank you,
Linda Brown

RENDERING



3. BUILDING FACADE EDGE LIT SIGNAGE

ELEVATION + SPECIFICATIONS



Overall dimensions: 130"H x 223"W

- letter height: 37" H

- logomark: 25" W x 130" H

Material: Front/Backlit signage, face is black perforated vinyl, painted black aluminum

Applied: Stud mounted into facade

3. BUILDING FACADE EDGE LIT SIGNAGE *DETAILS*

BLACK FACE LIT SIGNAGE EXAMPLE



Day view: black perforated vinyl on face of sign to contrast with white painted building facade

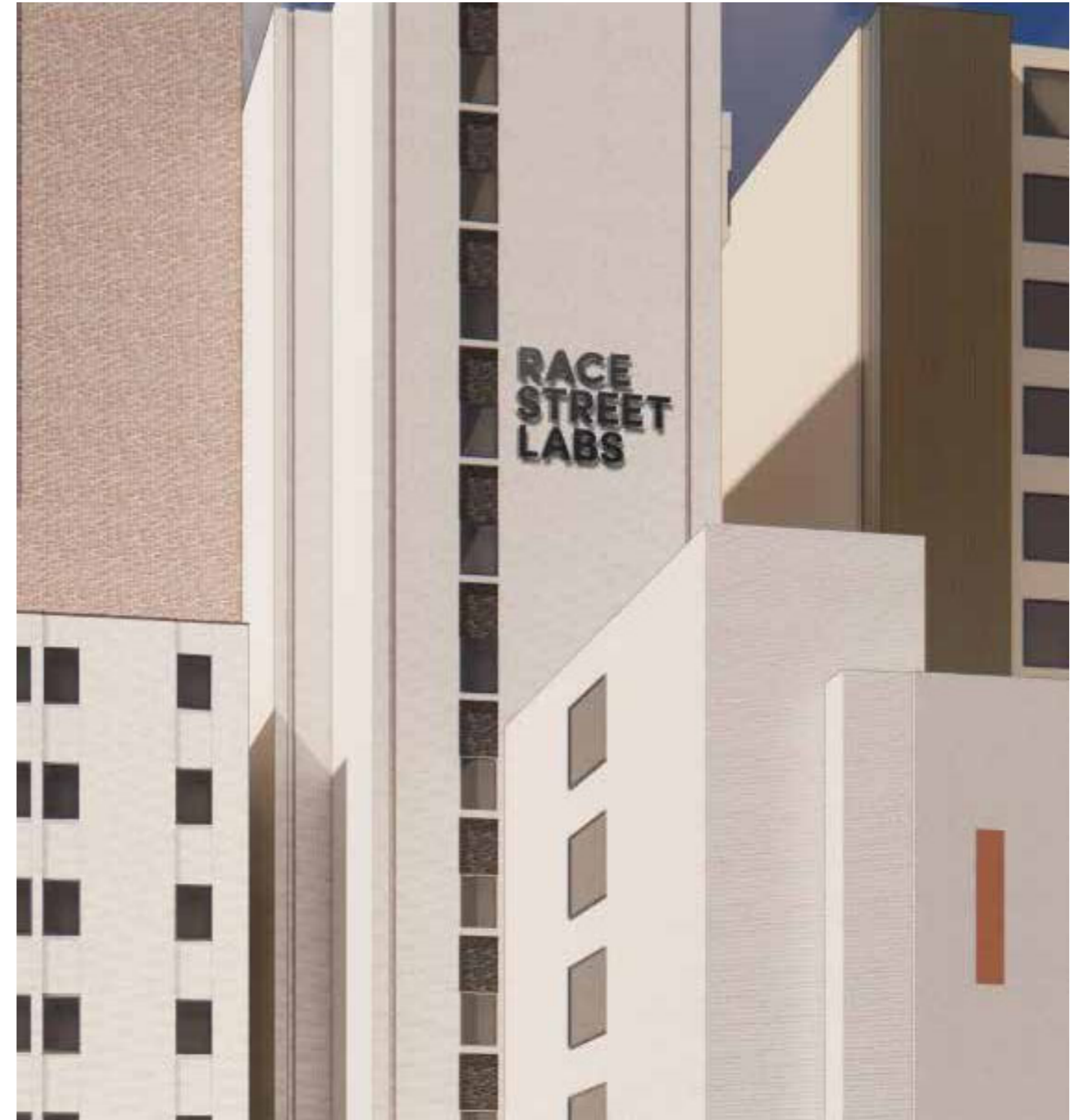
Night view: black perforated vinyl on face of sign appears to fade at night to reveal high contrast face lighting

FRONT/BACK-LIT CHANNEL LETTER EXAMPLE



IDII

RENDERING DETAIL

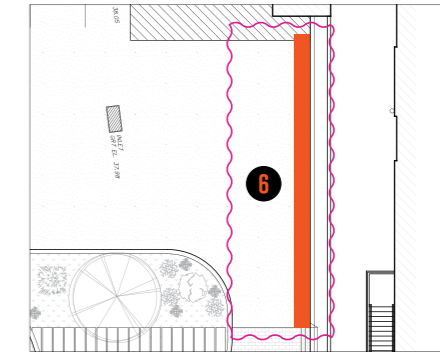


6. EXTERIOR WEST FACADE SCRIM MURAL

RENDERING



LOCATION PLAN



6.1 Scrim Mural
Overall dimensions: TBD
Material: Open weave fabric
Applied: Applied to corrugated facade

IDII