

20-30 WEST ALLENS LANE

PROJECT DESCRIPTION 4 STORY APARTMENT BUILDING WITH 76 RESIDENTIAL UNITS AND GROUND FLOOR ENCLOSED PARKING WITH 26 SPACES.

AREA 77,353 GSF

WEST MOUNT AIRY NEIGHBORS, INC
AUGUST 3, 2022

DEVELOPER KHOSLA PROPERTIES
ARCHITECT CANNO DESIGN
STRUCTURAL STRUCTURE LABS ENGINEERING
CIVIL COLLIERS ENGINEERS





A W ALLENS LANE LOOKING SE AT MACLEN'S AUTO BODY SHOP



C GERMANTOWN AVE LOOKING SW AT UNIVEST BANK & TRUST CO.



B W ALLENS LANE LOOKING SOUTH AT WAWA



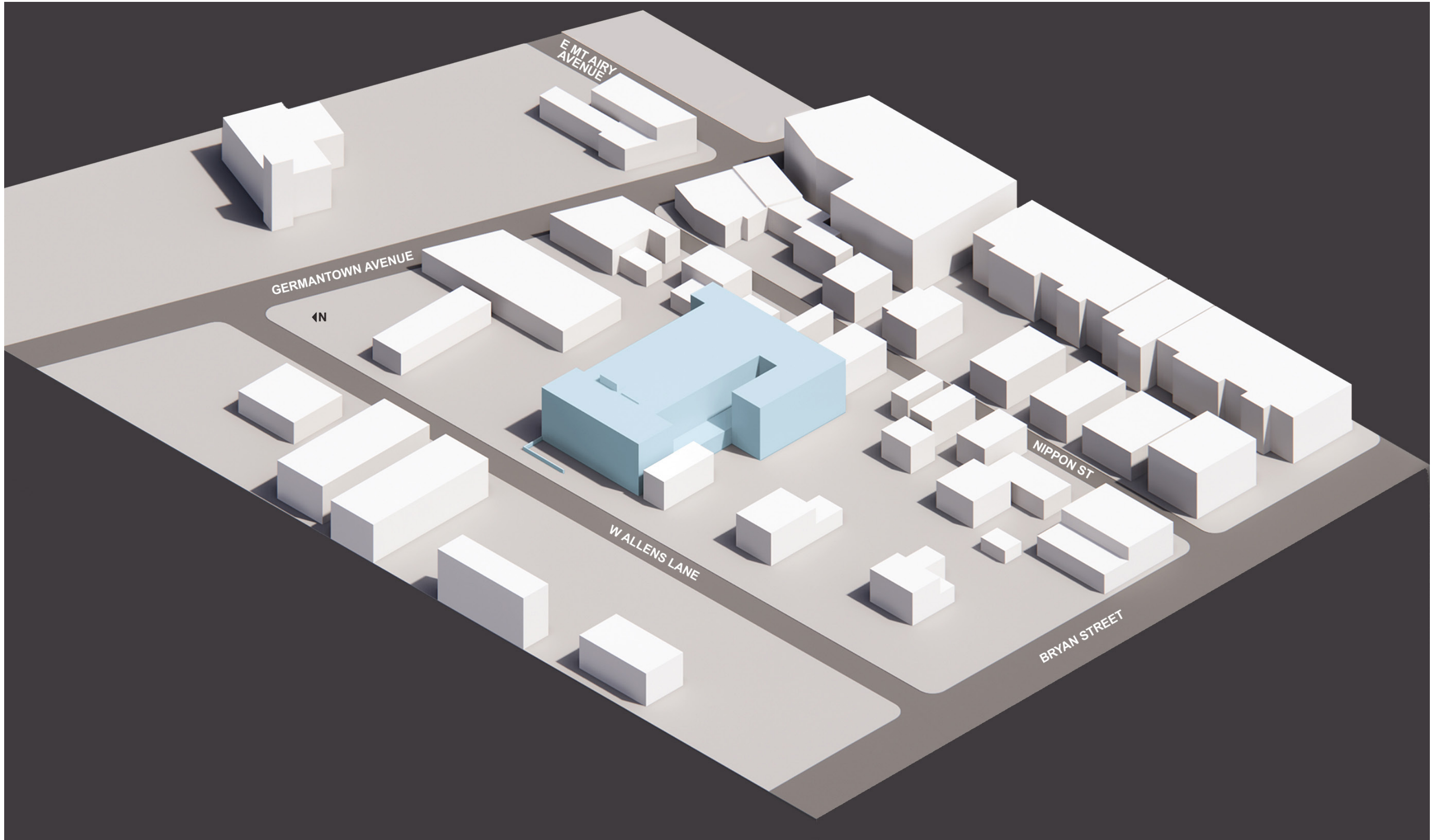
D NIPPON STREET LOOKING NW



E W ALLENS LANE LOOKING SE AT MACLEN'S AUTO BODY SHOP



F MACLEN'S AUTO BODY SHOP PROPERTY LOOKING EAST



PROP. LOADING ZONE

WEST ALLENS LANE

4' FURNISHING ZONE
8' WALKING ZONE

GARAGE ENTRANCE

RESIDENCE ENTRANCE

RAIN GARDEN

ADJACENT RESIDENTIAL

RESIDENTIAL

WAWA

- RESIDENTIAL PROGRAM
- GREENERY
- PARKING
- UTILITIES
- TRASH
- RESIDENTIAL AMENITY SPACE

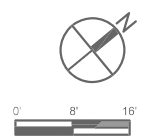
AMENITY SPACE

ELECTRIC VEHICLE CHARGING STATION

A

PRIVATE YARDS AT GROUND FLOOR

UNIVEST BANK



15

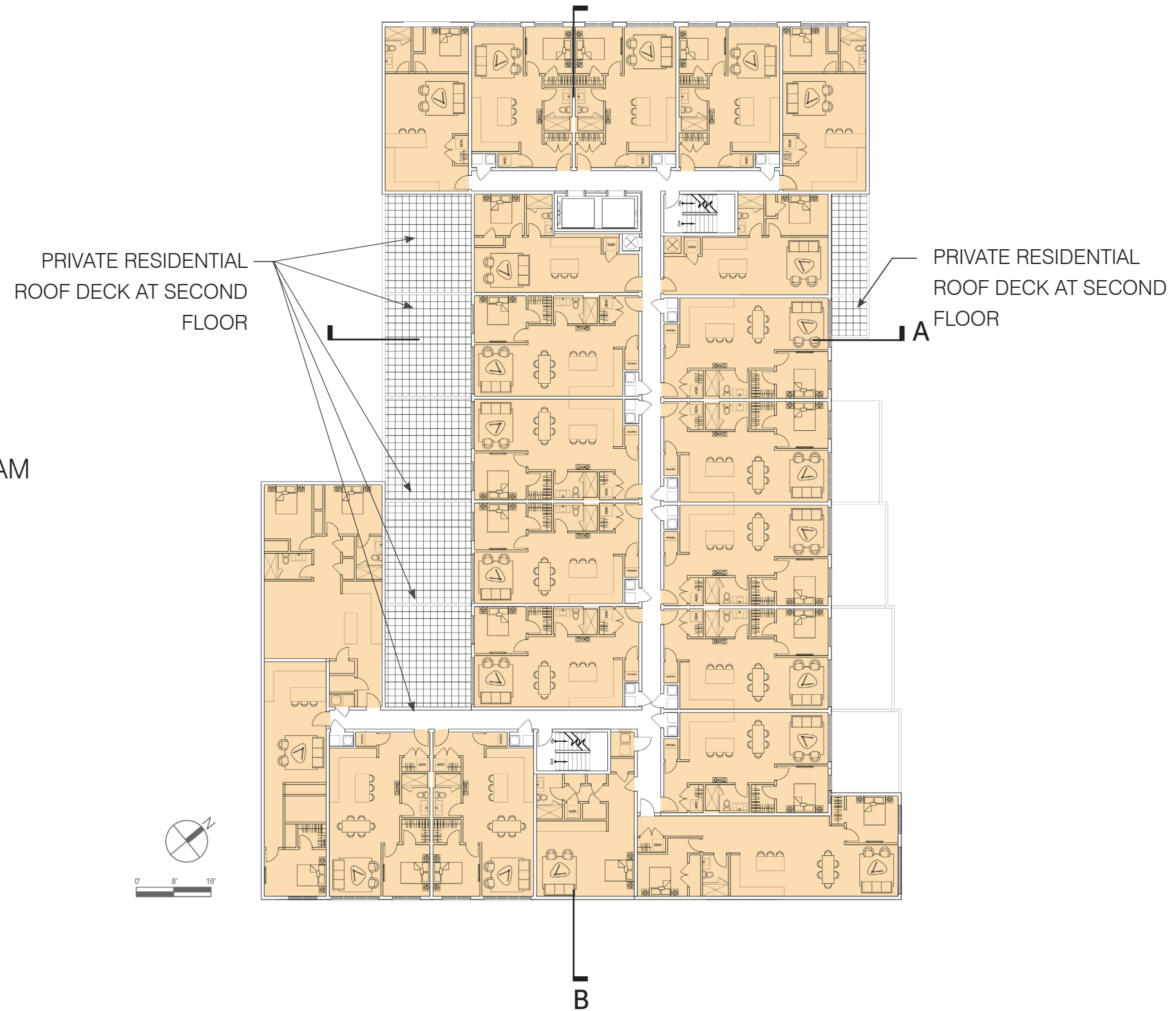
16

RESIDENTIAL

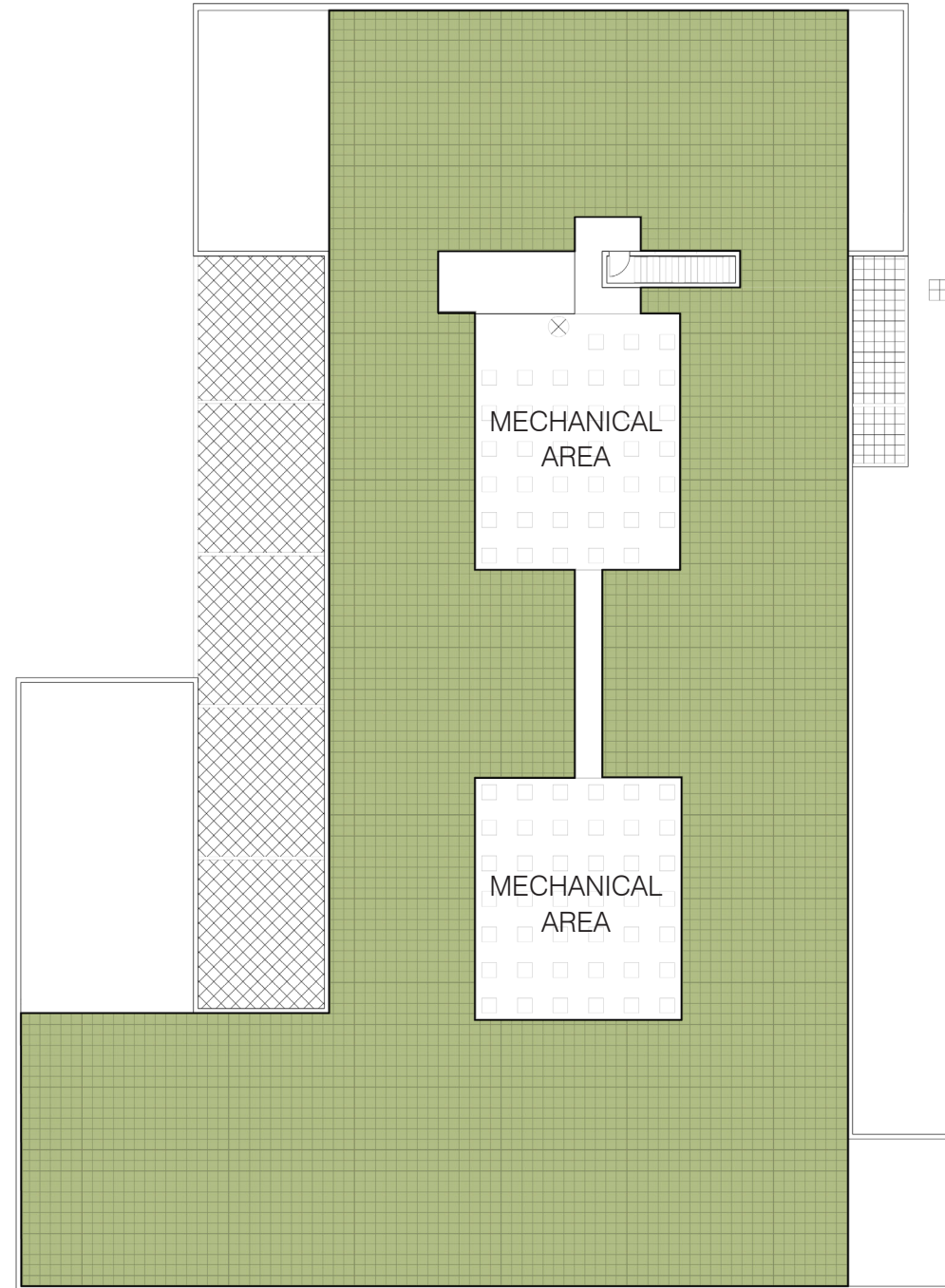
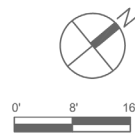
B

RESIDENTIAL

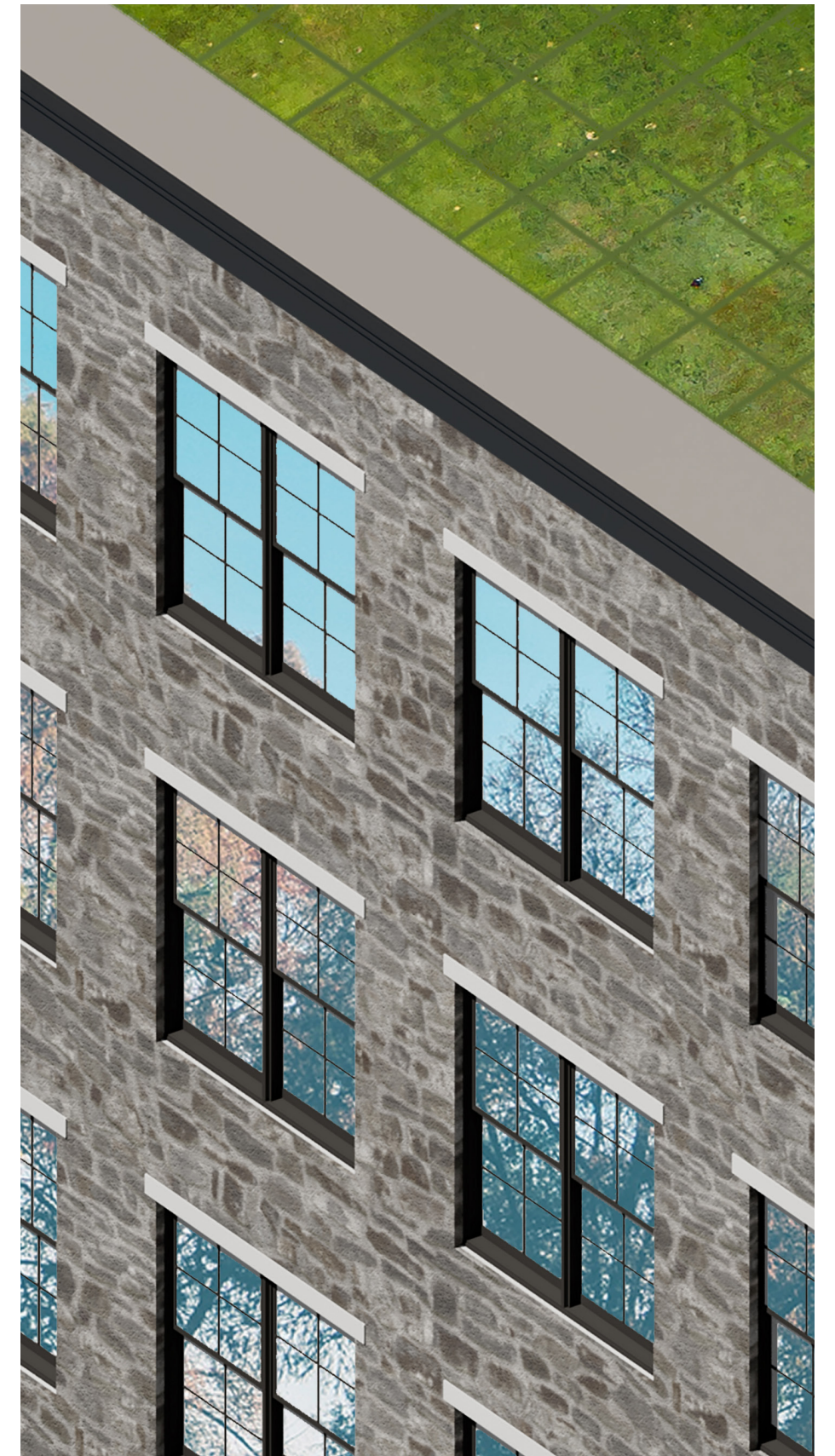
MIXED-USE



■ GREEN ROOF
MEETING PWD REQUIREMENTS









NORTHEAST VIEW



REAR VIEW



SOUTHWEST VIEW

- VERTICAL METAL PANEL
- VERTICAL BOARD AND BATTEN SIDING
- WISSAHICKON SCHIST



AERIAL VIEW - BACK



REAR VIEW



AERIAL VIEW - FRONT



VIEW FROM NIPPON STREET





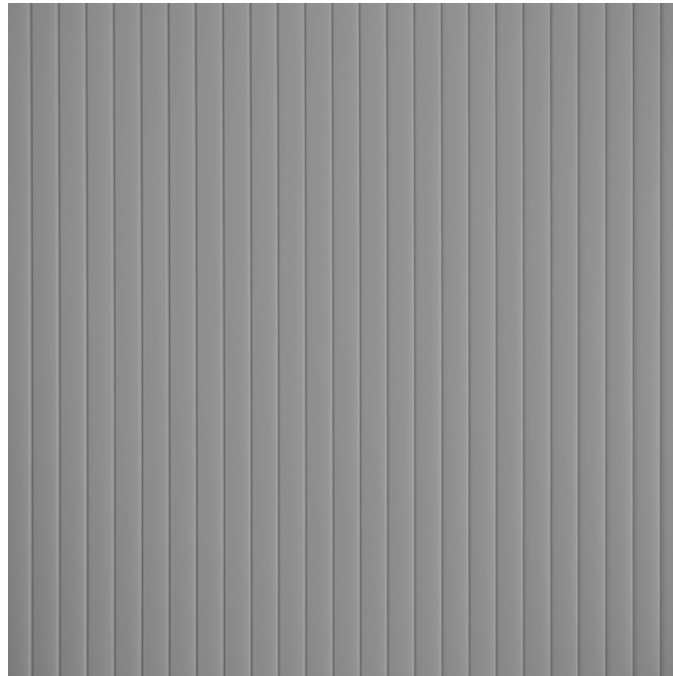
A STONE LINTEL



B WISSAHICKON SCHIST



C VERTICAL BOARD AND BATTEN SIDING



D DARK GRAY METAL PANEL



E BLACK EXTERIOR WINDOWS



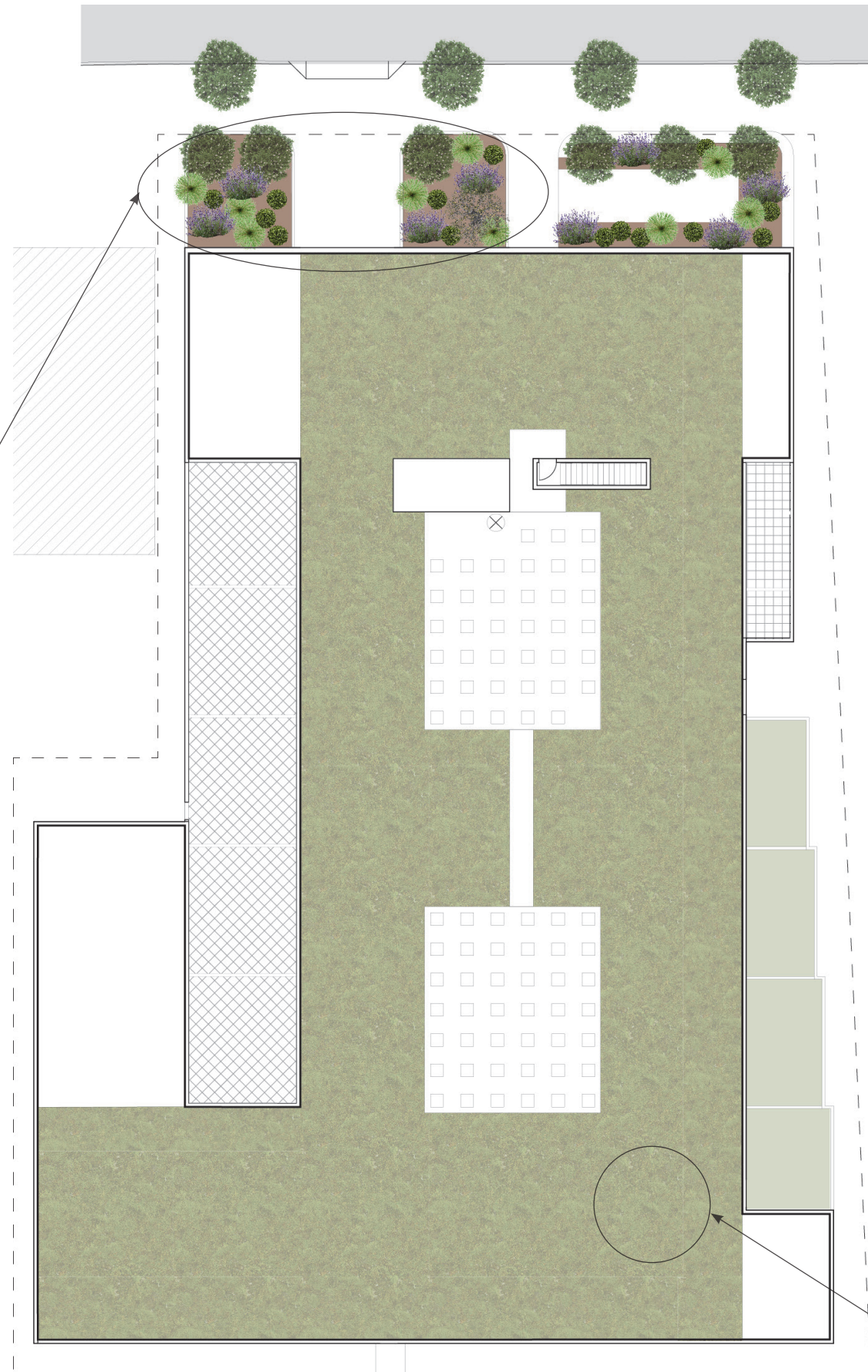
F SIDEWALK BIKE RACKS



RAIN GARDEN



RAIN GARDEN



-  MULCH
-  GREEN ROOF (SEDUM SPECIES)
-  SHRUB SPECIES (*Chamaecyparis Obtusa*)
-  GRASSES (*Sporobolus "Tara"*)
-  TREES (*Lavalle Hawthorn*)
-  PERENNIALS / ANNUALS (*Lavandula*)
-  TREES (*Aurora Dogwood*)



GREEN ROOF