



# Request for Information Use of City Assets to Advance Digital Equity

Informational Session  
September 2022



City of  
Philadelphia



# Context

## Philadelphia's Digital Divide



City of  
Philadelphia



# Why We Are Here

City of Philadelphia's Digital Equity Plan identifies initiatives that seek to leverage use of City-owned Assets to create a more equitable city.

01

## City pilots use of its assets to facilitate community-led wireless networks

- City can enable new, fixed wireless networks using municipal buildings, transportation infrastructure, street furniture, and other assets.

02

## The City creates a revenue generating stream to support its portfolio of digital equity programs.

- The City can work toward an investment strategy, using **city assets and other revenue generating methods**, to ensure funds are available for digital equity initiatives.
- City-generated revenue will allow flexibility to support programs not covered by federal or state funding,





*Our vision is to:*

create a competitive city where everyone has reliable internet, a working device, and the skills necessary to participate fully in the economy and our democracy.

## ...AND be a Smart City

A city that applies innovation, data and technology to achieve the economic, social, and sustainability goals of its community.

# 16%

**of Philadelphia households lack high-speed internet**

**56%** said the **cost of monthly fee** was a problem and **50%** said they could **not afford the cost of a computer.**

- 29% of low-income Philadelphians lack internet
- 33% of seniors lack internet
- One-third of residents in Philadelphia have difficulty keeping their internet service without a discount.

# 32%

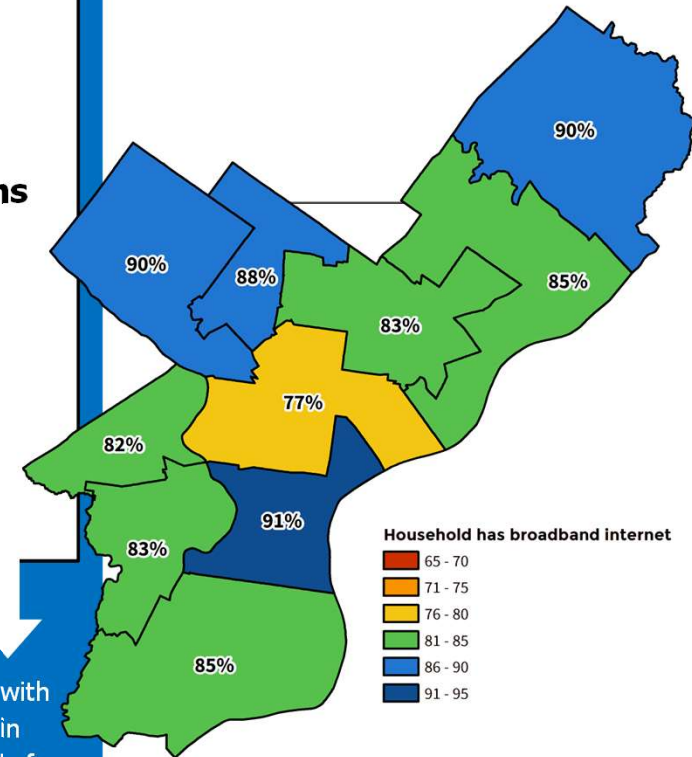
**of Philadelphia households are considered "subscription vulnerable."**

Subscription vulnerable households are low-income households that experienced service interruption in the pandemic or say it would be difficult to keep service without a discount

# 31%

**have heard of discount programs for Internet & devices**

More than 90% of those with broadband subscriptions in Philadelphia say a monthly fee of over \$20 per month is too expensive.





# What is the Challenge?

City needs a reliable, long-term revenue stream to sustain digital equity work.

Current Digital Equity initiatives are funded through short-term philanthropic, state or federal funding

The City has assets that may be of value that could be leveraged to energize the local economy in digital service delivery







# A call to action for a smart, equitable city

The City seeks ideas and input on city assets that could be made available:

1. As in-kind to provide direct low-cost or free digital services
2. Toward other technology advancements that would help fund digital equity needs

The City envisions that resulting public/private partnerships would offer services and/or a revenue model that would help Philadelphia address our digital divide challenge.

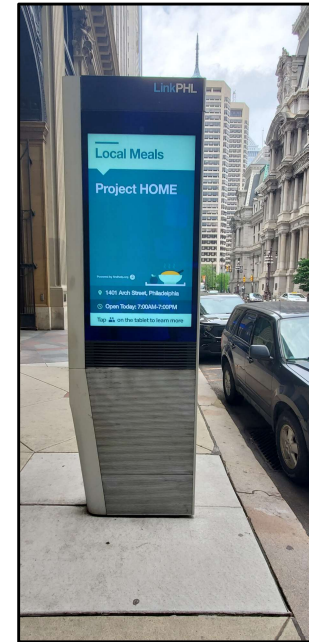






# The City is interested in innovative ideas that could leverage city assets including but not limited to:

- Free or low-cost, high-speed wireless networks
- Digital Advertising
- Intelligent Infrastructure
- Transportation Analytics
  - Infrastructure Monitoring
  - Public Space Management
  - Delivery and Parking Analytics and Payment
- Public Safety
- Park or Campus Lighting Controls





# The City is interested in ideas for use of *city-owned facilities*

There are over 1000 facilities listed in the City's Assets Map application:  
<http://city-assets-viewer.s3-website-us-east-1.amazonaws.com/>



Highway 4<sup>th</sup> District Yard Bldg, 4521 Stenton Ave.

## 67 City Office and Multi-Use Buildings

## 47 Libraries

## 17 Health and Human Services Facilities



Health Center 5: 1900-26 N 20TH ST

## 15 Transit and Parking Lots

## 63 Public Safety



Fire Engine 25: 2937 BOUDINOT ST

## 23 Museums and Zoo

## 792 Parks and Recreation



Conestoga Playground Building 1452 N 53RD ST





## The City is open to the idea of providing access to *additional assets*

Assets managed by separate utilities or not owned by the City are not included in this RFI.

These other assets might include:

- School District or Charter School buildings
- Electric Utility Systems
- Street Lighting
- Water Utility Systems
- Gas Utility Systems
- Traffic Systems
- Bus-Rail Systems
- Parking Systems
- Waste Management Systems
- Tourism
- Vehicle fleets
- IT Communications: wired and wireless networks





## Things to consider in your response / What we are interested in learning

1. What type of access, how often, what's the best way for you to get access?
  - a. Does this include 3rd parties?
2. What other support equipment or services would be needed to provide the services you propose?
  - a. For example: electricity, computer servers, staff, etc.
3. Explain how your revenue and/or cost sharing model works and provide examples you have in place with other cities or counties
4. What federal/state funding sources would you braid together or tap?
5. What type of technology integrator and/or project management roles can you fulfill?





# The City's commitment to support the journey

- All ideas should be on the table
- Central coordination of all assets under consideration
- PMO to coordinate and facilitate
- Commitment to transparency
- Potential to develop a Master License Agreement
- Consideration for one or more RFPs
- Commitment to advancing our digital equity plan
- Consideration of federal and state funding under IIJA or other sources





## How to Respond

One electronic copy in machine-readable format (MS Word format or PDF) should be sent via email to both:

- [Juliet.Fink-Yates@phila.gov](mailto:Juliet.Fink-Yates@phila.gov)
- [Gayle.Ruggeri@Phila.gov](mailto:Gayle.Ruggeri@Phila.gov)
- Use the subject line **“Use of Assets – First name, Last name”**.
- Please use the RFI template provided in Appendix A for your responses.

### **Your proposal should also include:**

- A cover letter which summarizes your response
- The response itself, covering any or all of the areas of information requested by this RFI.





## Timeline

<b>Release of Request for Information (RFI)</b>	<b>8/05/22</b>
<b>Informational Session (Registration required)</b>	9/01/22 at 3:00 p.m. EST - Register <a href="#">HERE</a> 9/08/22 at 10:00 a.m. EST - Register <a href="#">HERE</a>
<b>Deadline for questions, requests for clarification, or requests for additional information</b>  (email <a href="mailto:Juliet.Fink-Yates@phila.gov">Juliet.Fink-Yates@phila.gov</a> and <a href="mailto:Gayle.Ruggeri@Phila.gov">Gayle.Ruggeri@Phila.gov</a> )	9/09/22 by 5:00 p.m. EST
<b>City Responds to Questions (<a href="http://www.phila.gov/rfp">http://www.phila.gov/rfp</a>)</b>	9/16/22
<b>Responses to RFI Due</b>  Email <a href="mailto:Juliet.Fink-Yates@phila.gov">Juliet.Fink-Yates@phila.gov</a> and <a href="mailto:Gayle.Ruggeri@Phila.gov">Gayle.Ruggeri@Phila.gov</a> )	9/30/22 by 5:00 p.m. EST







Thank You  
Questions

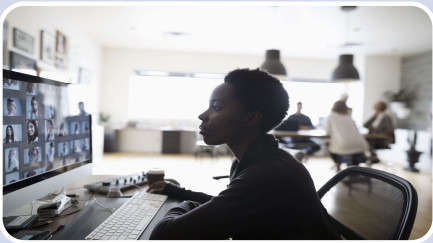


City of  
**Philadelphia**



# CITY OF PHILADELPHIA DIGITAL EQUITY PLAN

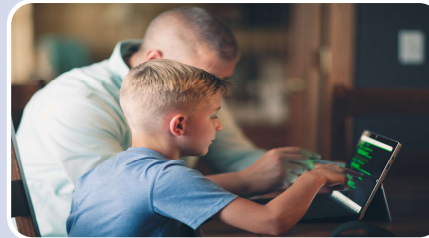
## 4 KEY GOALS



**GOAL 1: DEVICES**  
PHILADELPHIANS CAN  
ACCESS APPROPRIATE  
AND AFFORDABLE  
TECHNOLOGY DEVICES



**GOAL #2: CONNECTIVITY**  
PHILADELPHIANS  
CAN ACCESS AND AFFORD  
THE INTERNET  
CONNECTIVITY THEY NEED



**GOAL #3: TRAINING &  
WORKFORCE**  
PHILADELPHIANS  
DEVELOP THE DIGITAL  
SKILLS NECESSARY FOR  
WORK AND LIFE



**GOAL #4: ECOSYSTEM**  
PHILADELPHIA GROWS  
AND SUSTAINS THE  
INFRASTRUCTURE AND  
ECOSYSTEM TO  
INCREASE DIGITAL  
EQUITY

