

# Parkside Avenue Safe & Complete Streets Projects

Multi-Project Update

7.18.22



City of  
**Philadelphia**



# AGENDA

1. Introductions
2. Projects overview
3. Future Feedback & Information Opportunities
4. Questions/Concerns

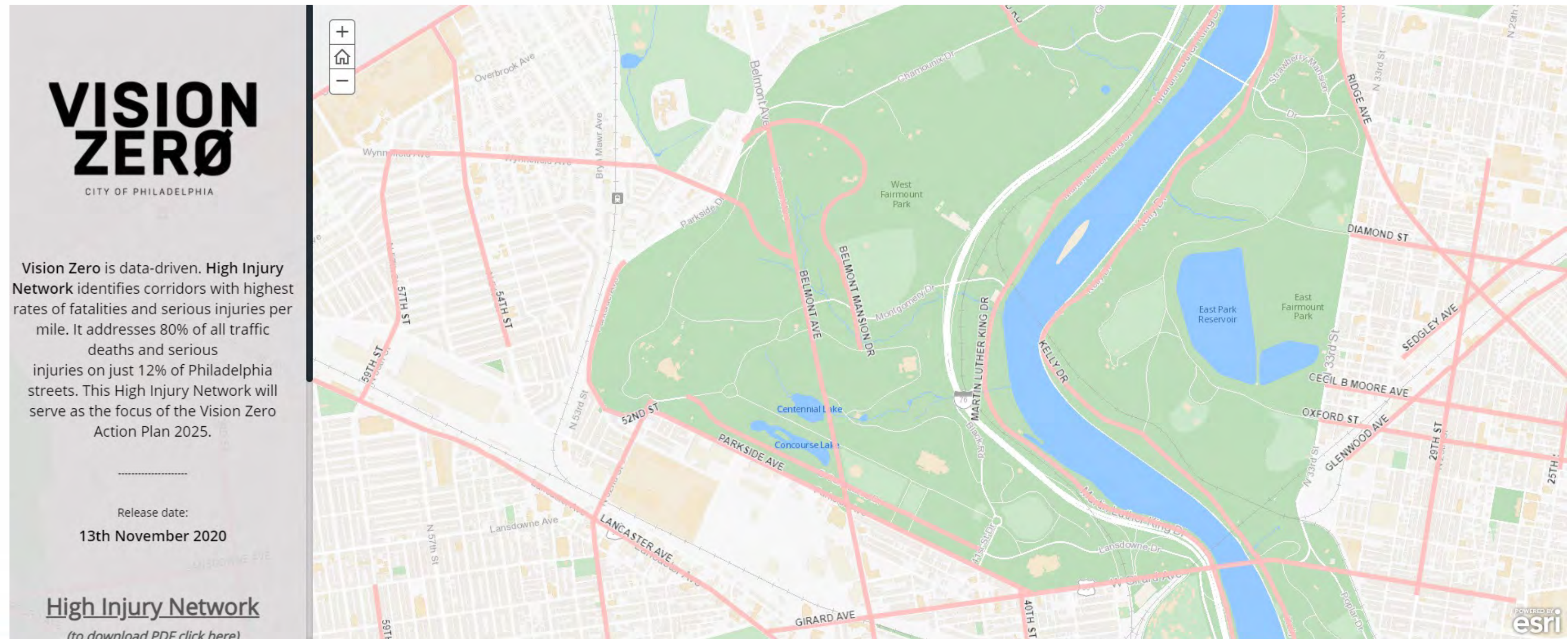


## Safety & Parkside





# Safety & Parkside



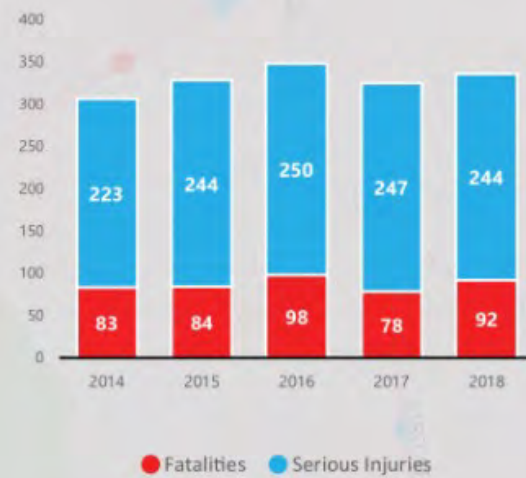


# Safety & Parkside

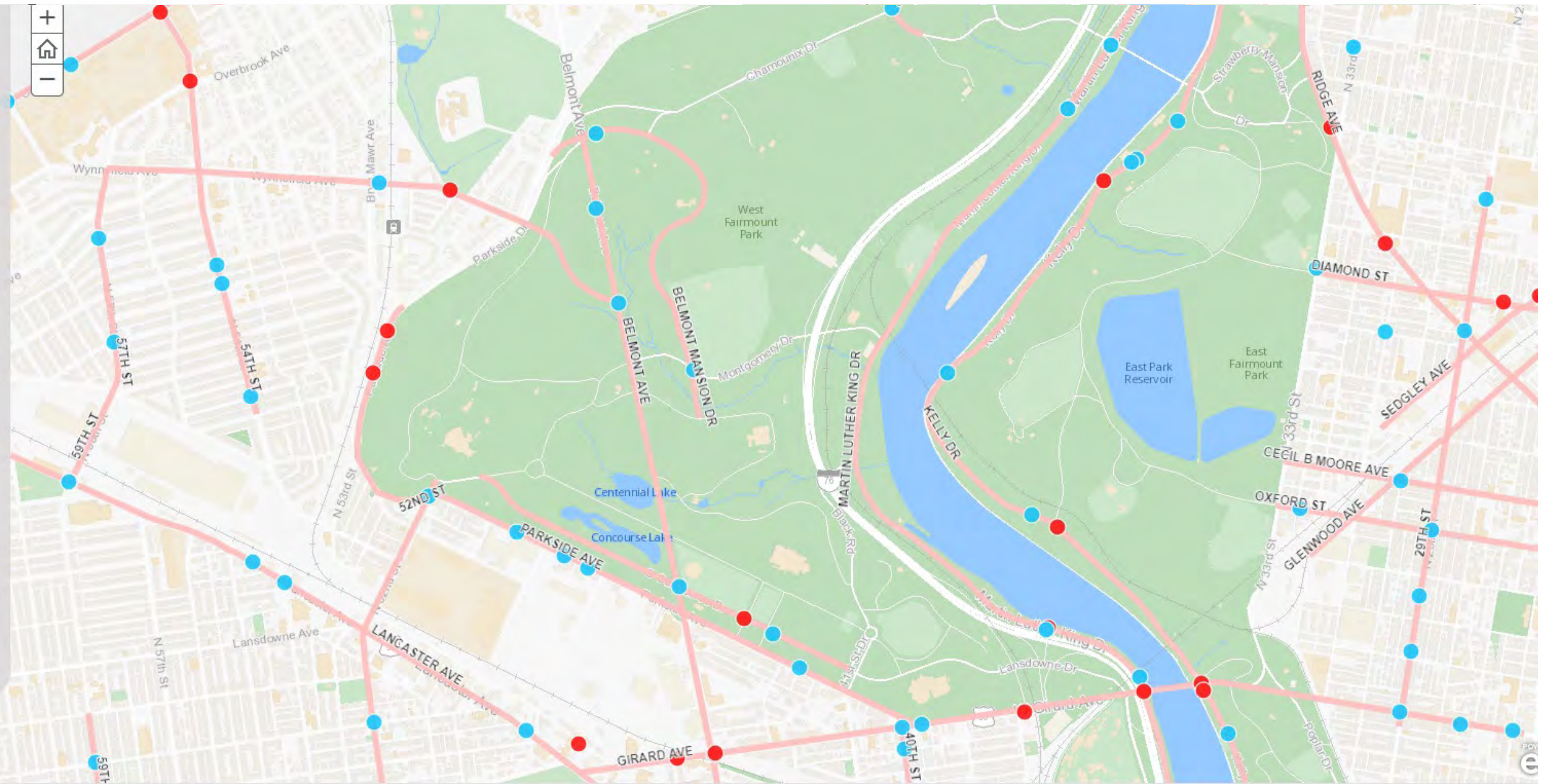
## KILLED OR SERIOUS INJURY CRASHES

Traffic Crashes where at least one person was killed or suffered serious injuries is referred to as a Killed or Serious Injury or KSI crash.

### Total Fatalities and Serious Injuries (2014-2018)



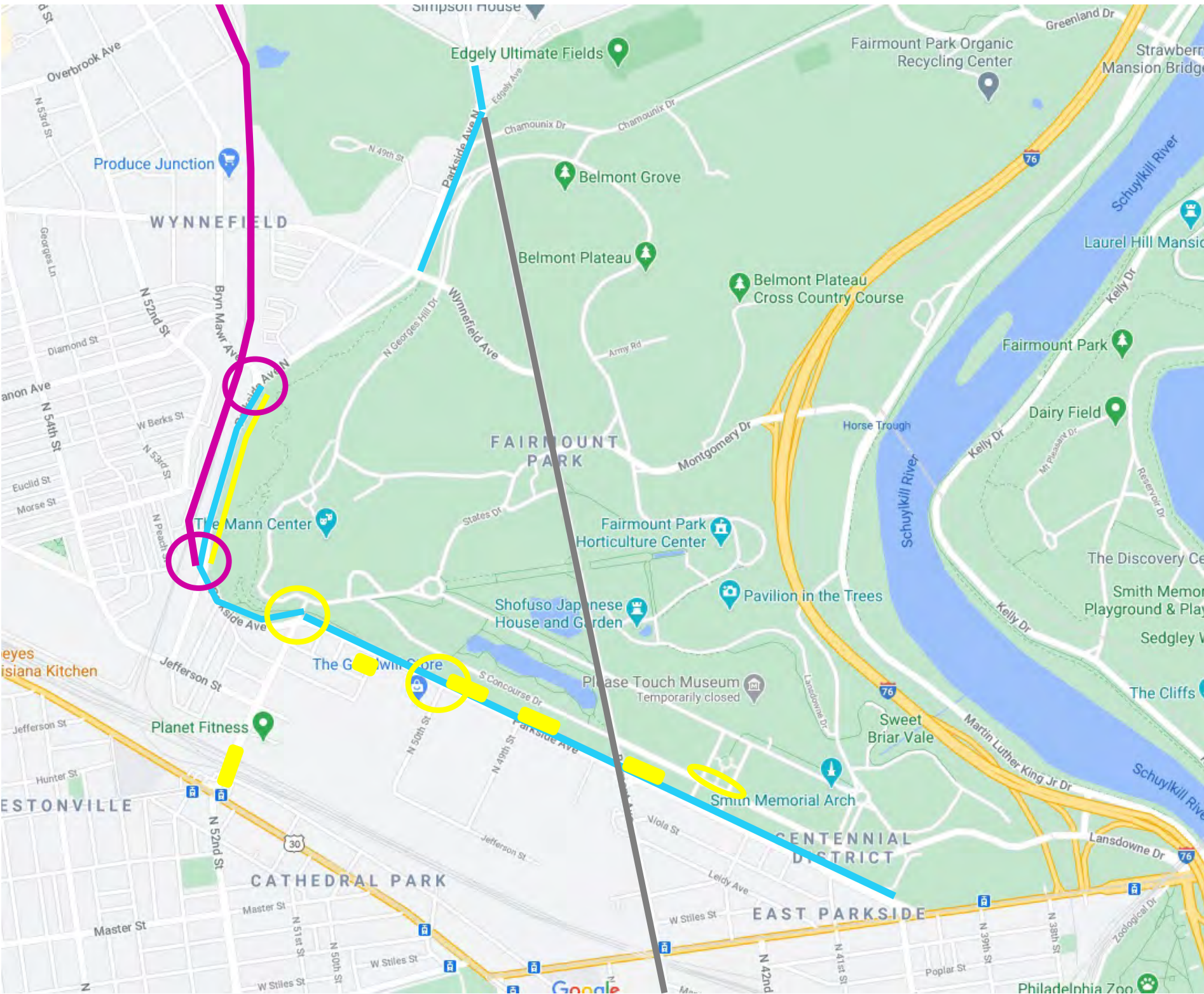
Data Source:  
PennDOT (2014-2018; interstates excluded)





# Projects & Timing

- 2021 Paving/Striping
- 2021 Layout Change
- 2022 Design (2022+ Construction)
- 2022 Design (2023+ Construction)

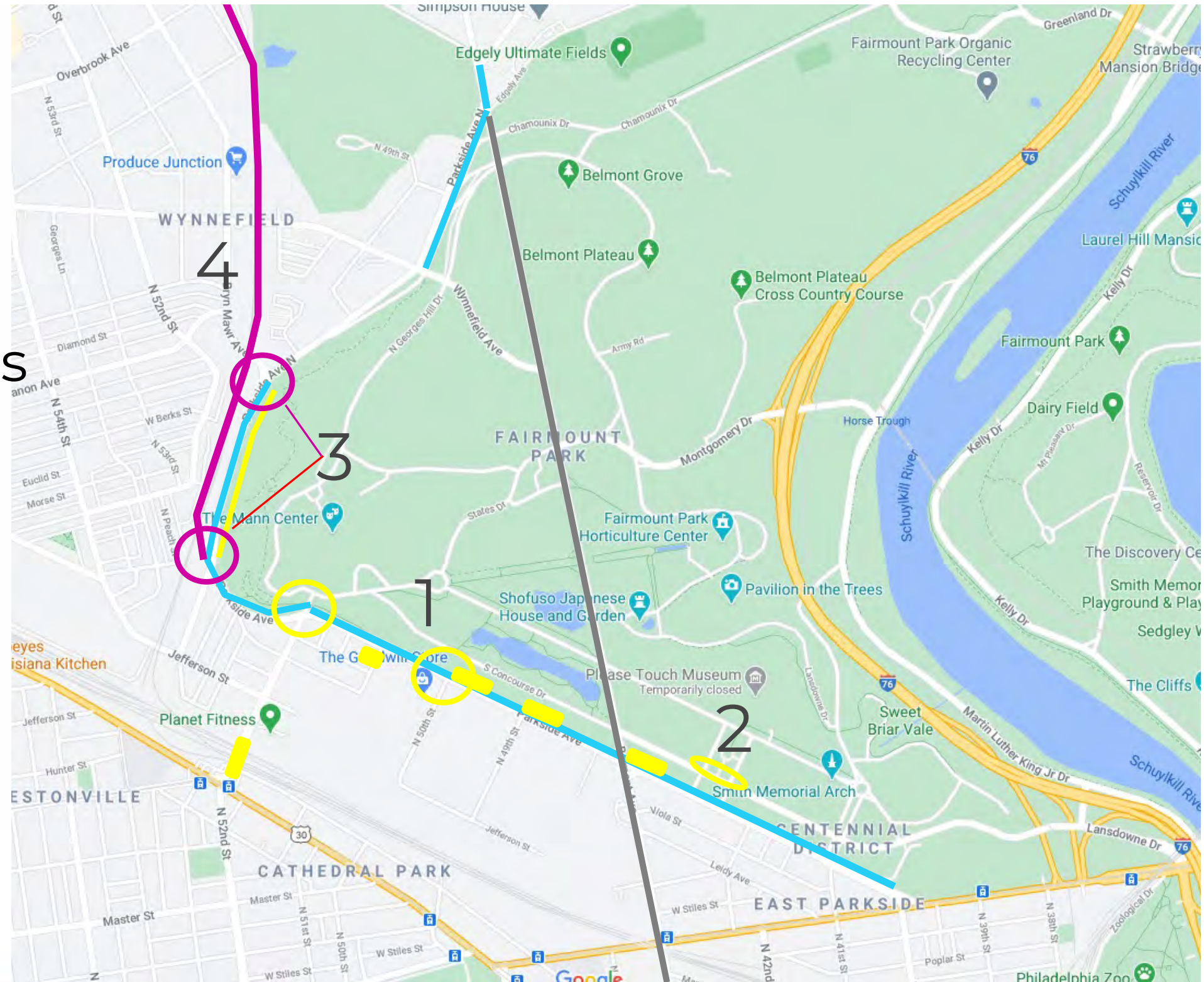




# Projects & Timing

1. Parkside Multimodal
2. Parkside Edge Projects
3. Parkside Two Intersections Project
4. Parkside Cynwyd Trail

- 2021 Paving/Striping
- 2021 Layout Change
- 2022 Design (2022+ Construction)
- 2022 Design (2023+ Construction)





# 1. Parkside Avenue PennDOT Multimodal Transportation Fund Project



- Agency (City & State):



- Consultant Engineering Team:



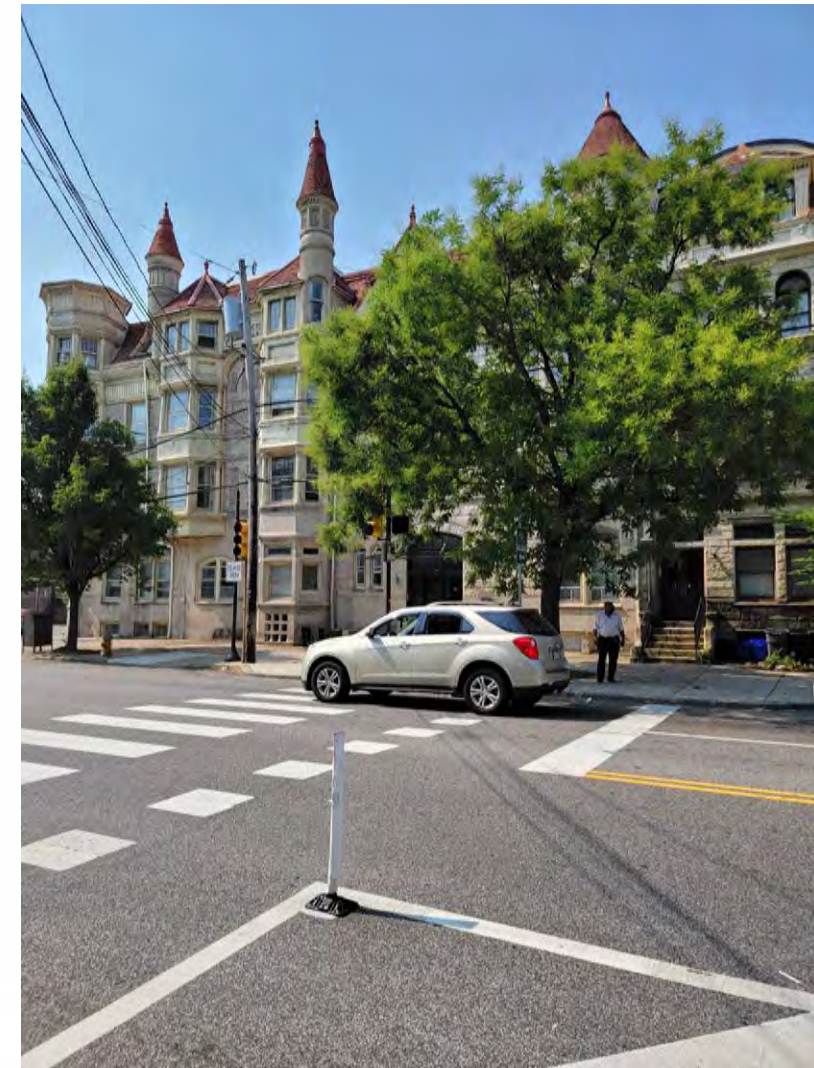




# Parkside Avenue PennDOT Multimodal Transportation Fund Project – Project Team



- Project Limits: Girard Ave to Bryn Mawr Ave
- Total Length: 9,585'
- Timeline:
  - Design – July 2021 to April 2022
  - Construction – Fall 2022 to Spring 2023

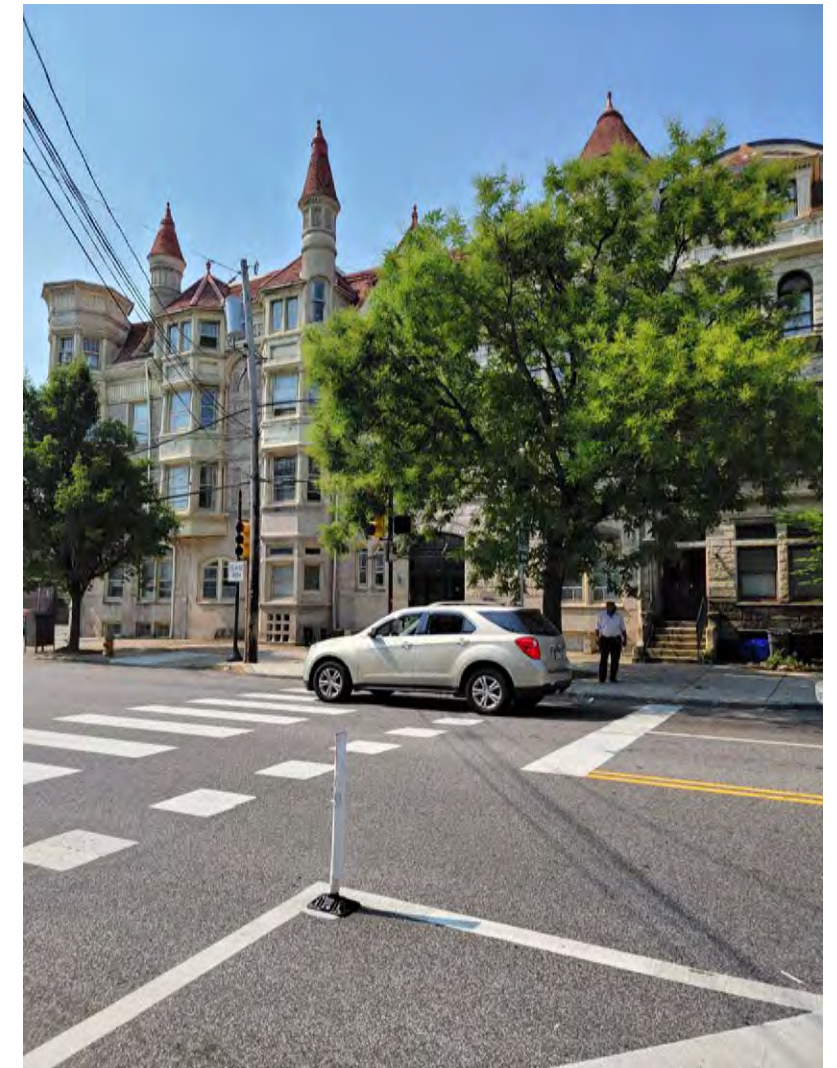




# Parkside Avenue PennDOT Multimodal Transportation Fund Project – Project Team



- Project Goals:
  - Increase safety for people walking across and along Parkside, people taking transit, people biking, and people driving
  - Upgrade ADA ramps
  - Extent the pedestrian trail from 53<sup>rd</sup> – Bryn Mawr
  - Add SEPTA bus boarding concrete islands
  - Add signal and intersection features to maintain car flow







# Parkside Avenue PennDOT Multimodal Transportation Fund Project – Safety Improvements

- Two-Way Bikeway
  - Parking Separated Bikeway, Paint Buffered with Delineators
- SEPTA Concrete Bus Islands & Concrete Parking Shadow Islands
- Corner Concrete Bump Outs
- Signal Upgrades
  - Audible Pedestrian Signals
  - Countdown Pedestrian Signals
  - New Signal at 50<sup>th</sup> Street
- Pavement Markings Refresh
- ADA Curb Ramps & Bicycle Ramps
- 52<sup>nd</sup> Street Gateway Sign & Lighting Project





# Parkside Avenue PennDOT Multimodal Transportation Fund Project – Renderings





# Parkside Avenue PennDOT Multimodal Transportation Fund Project – Renderings





# Parkside Avenue PennDOT Multimodal Transportation Fund Project – Renderings







# Parkside Avenue PennDOT Multimodal Transportation Fund Project – Renderings



1 View Facing North  
scale: NTS

3'-0 1/2" x 3'-0 1/2"  
3/16" galvanized steel sheet  
with laser cut letter  
Open sides and bottom

Horizontal angle  
fastened to vertical angle per S-1

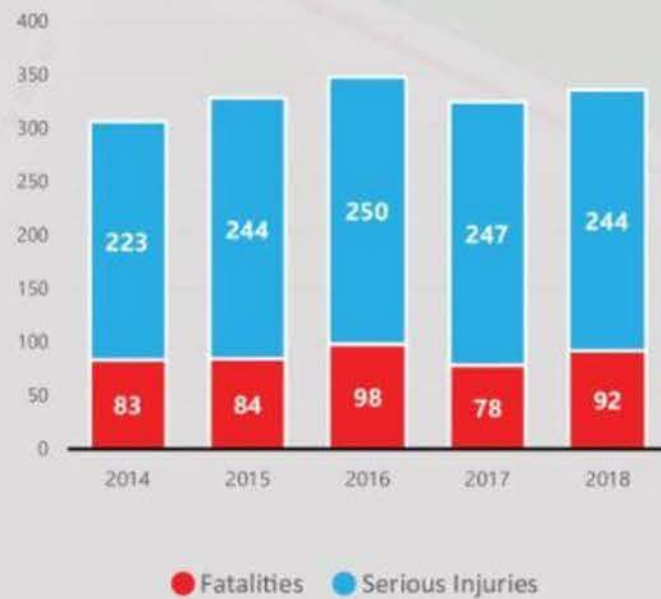


# 2. FPC Projects - Parkside Edge Crossing

## KILLED OR SERIOUS INJURY CRASHES

Traffic Crashes where at least one person was killed or suffered serious injuries is referred to as a Killed or Serious Injury or KSI crash.

### Total Fatalities and Serious Injuries (2014-2018)



Data Source:  
PennDOT (2014-2018; interstates excluded)





# Parkside Edge Safety



- Design began in 2021
- Construction began April 2022
- Complete July 30, 2022



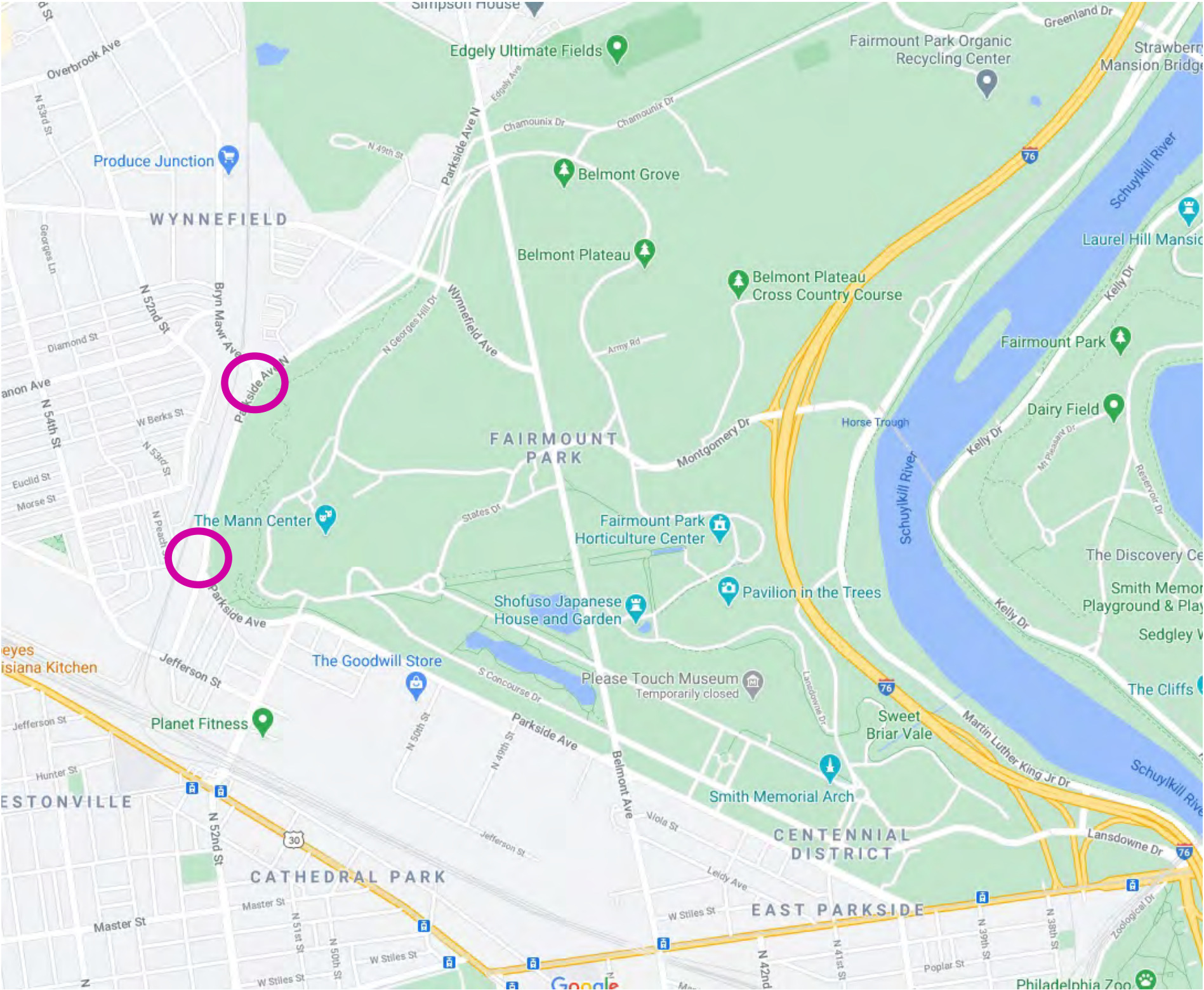
# Parkside Edge New Landscape





# 3. Parkside Two Intersections Project

2022/23 Design (2024+ Construction)







# 4. Parkside Cynwyd Trail

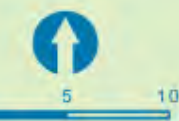
Project overview and status update

July 2022



**the Circuit**  
Greater Philadelphia's  
Regional Trail Network

- Existing Trails
- Trails in Progress
- Planned Trails



DELAWARE VALLEY  
**dvrpc**  
REGIONAL  
PLANNING COMMISSION

May 2012



**PHILADELPHIA  
PARKS &  
RECREATION**



**Michael Baker  
INTERNATIONAL**





# Project Location

City Avenue to Parkside  
Avenue/53<sup>rd</sup> Street

Located along the SEPTA  
Cynwyd Regional Rail Line



**Michael Baker**  
INTERNATIONAL





# Trail Network

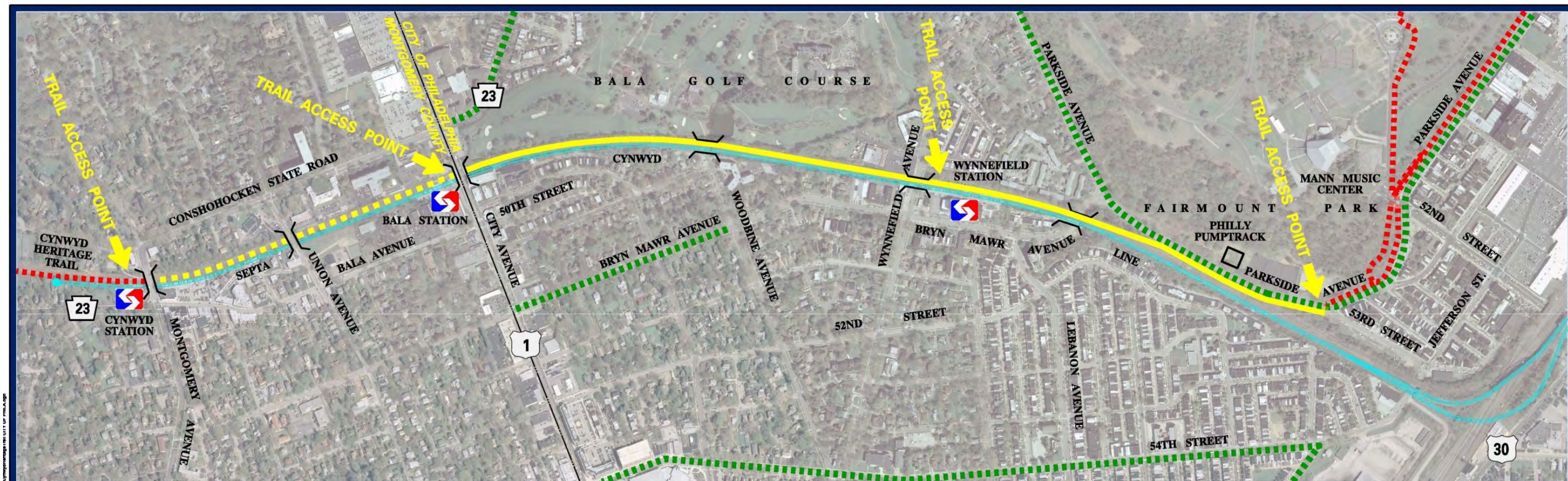
Lower Merion Twp. Portion – Montgomery Ave to City Ave

City of Phila. Portion –City Ave to Parkside Ave





# Project Overview Map



## LEGEND:

- PROPOSED SHARED-USE PATH
- PROPOSED SHARED-USE PATH BY OTHERS
- EXISTING SHARED-USE PATH
- EXISTING BIKE LANES





# Existing Conditions

- Formerly 2 railroad tracks
- One track area currently unused





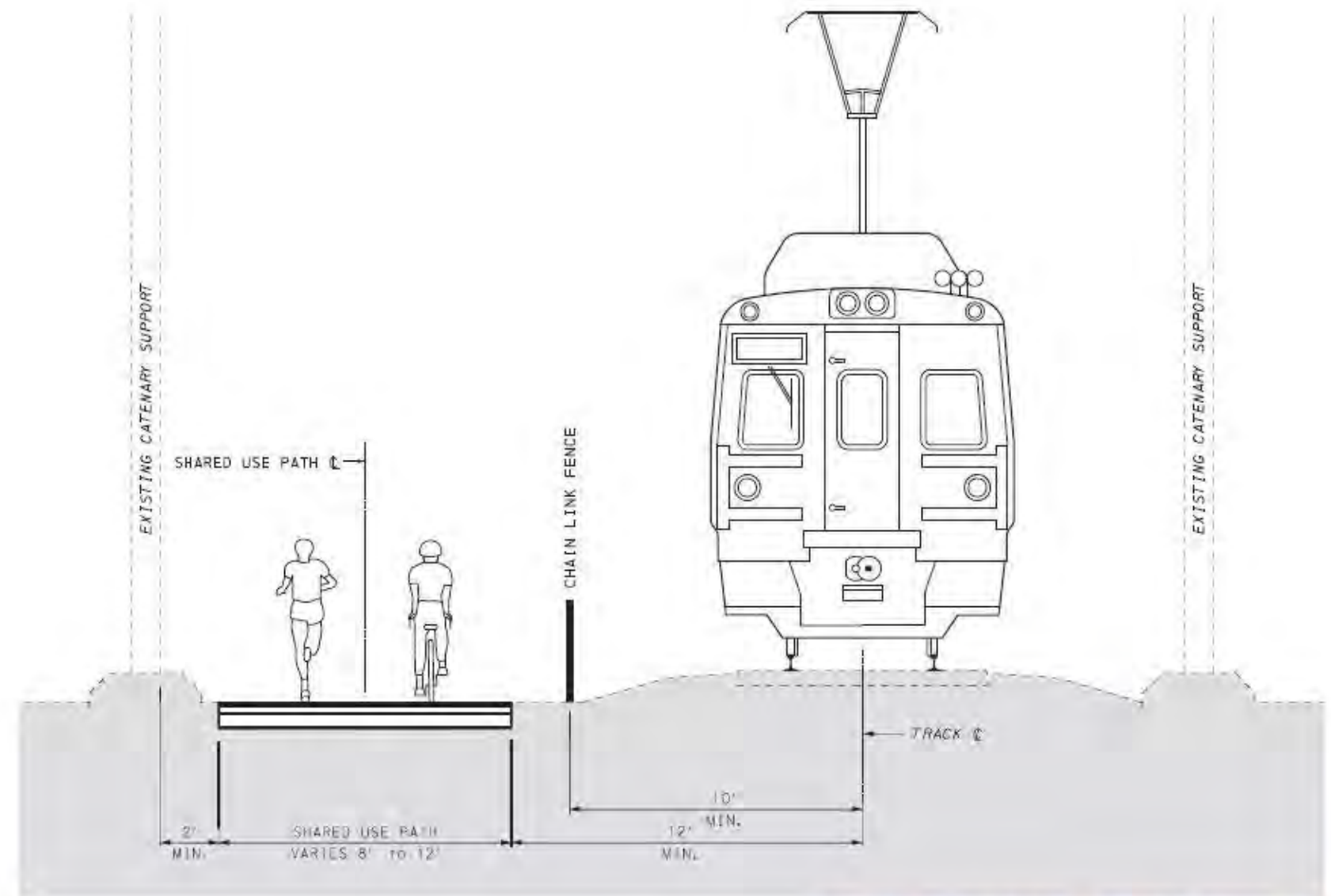
# Artistic Rendering of Completed Trail





# Project Description

- Rail with Trail
- Separated from the railroad tracks by continuous chain-link fence
- 1.25 miles long
- Paved surface
- Connection to Lower Merion Twp. Cynwyd Heritage Trail and to Manayunk Bridge Trail
- Connection to several SEPTA stations



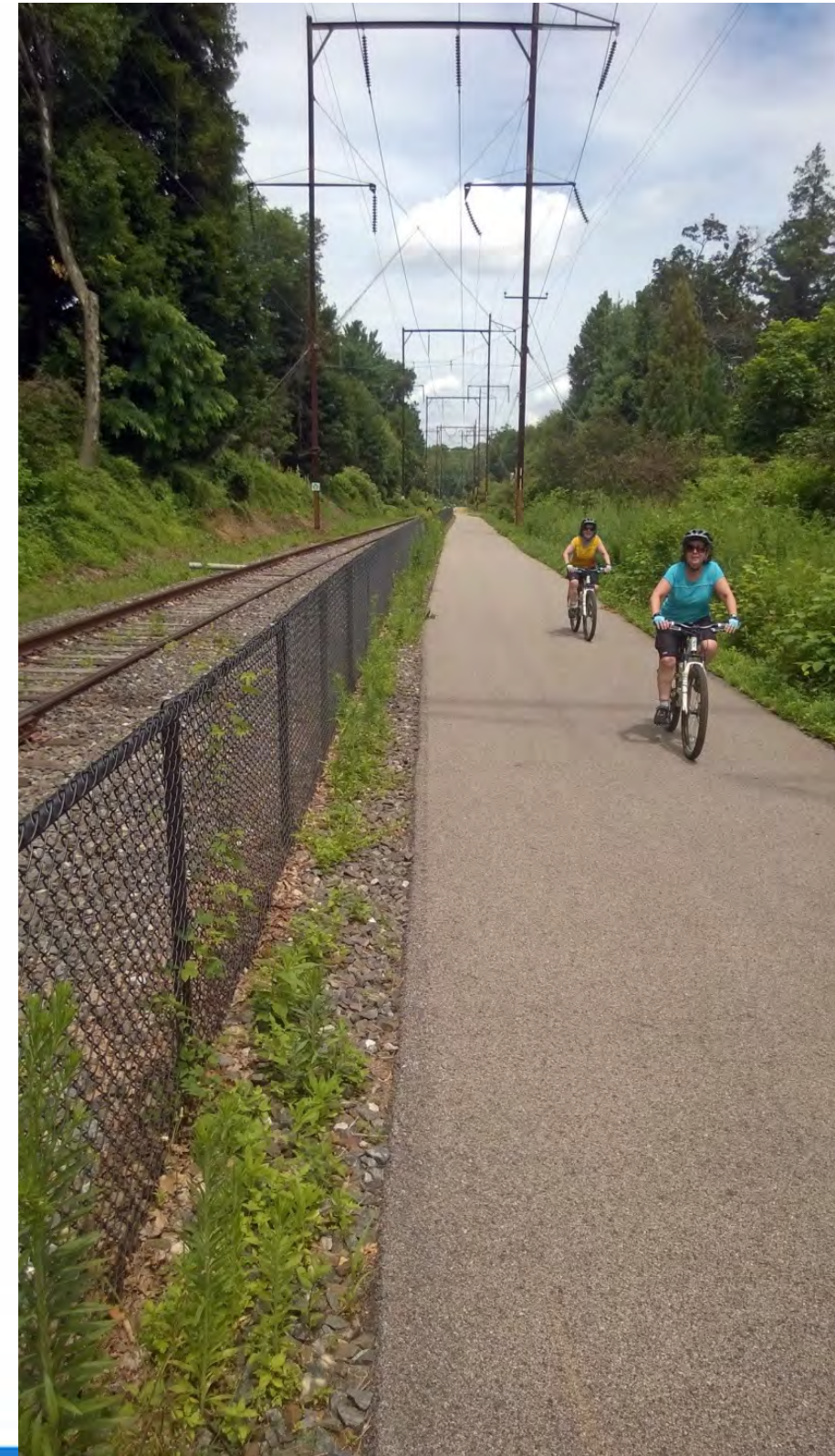
Proposed typical section, Parkside Cynwyd Trail





# Existing Cynwyd Heritage Trail

- Similar design
- Continuous chain link fence with tight anti-climb mesh
- Paved trail between catenary poles







# Parkside Cynwyd Trail Project Schedule (City Ave to Parkside Ave)

- Final Design – Spring 2023
- Advertise/Bidding/Award – Summer 2023
- Finding Funding & Construction – 2023 at the earliest
- Construction – 2024 at the earliest





# Feedback & Information Sharing

1. July 18<sup>th</sup> Meeting civic leaders meeting & follow up
2. Further public meetings/outreach throughout summer/fall
3. Parkside Projects City Webpage

<https://www.phila.gov/programs/parkside-avenue-traffic-safety-project/>

4. Email Jeannette or [otis@phila.gov](mailto:otis@phila.gov)

The screenshot shows the official website of the City of Philadelphia. At the top, there is a navigation bar with links to 'Office of the Mayor', 'City government directory', and a search icon. Below this, the 'City of Philadelphia' logo is visible, along with links for 'SERVICES', 'PROGRAMS & INITIATIVES', 'NEWS & EVENTS', and 'PUBLICATIONS & FORMS'. A prominent orange banner at the top of the main content area promotes the 'COVID-19 vaccine', stating it is now available for certain groups and encouraging users to 'sign up today!'. The main heading for the page is 'Parkside Avenue Traffic Safety Project', with a subheading 'Increasing traffic safety along Parkside Avenue through street and trail improvements.' Below the text is a large photograph of a street intersection. A navigation bar at the bottom of the main content area includes links for 'HOME', 'OUR TEAM', and 'RESOURCES'. On the right side, there is a 'Connect' section with contact information: an email icon and 'otis@phila.gov', a phone icon and '(215) 436-9886', and social media icons for Facebook, Twitter, and Instagram. On the left side, there is an 'About' section that explains the project's goal to address a higher rate of severe traffic crashes on Parkside Avenue and lists planned improvements for 2020-2023, such as repaving, reorganizing the roadway, adding concrete bump-outs, installing new signals, and adding dedicated bus-boarding islands.

An official website of the City of Philadelphia government. [Here's how you know](#) Office of the Mayor | City government directory |

**City of Philadelphia** SERVICES PROGRAMS & INITIATIVES NEWS & EVENTS PUBLICATIONS & FORMS

**COVID-19 vaccine** The vaccine is now available for certain groups. Learn more about the City's [plans for distributing vaccines](#). If you're interested in getting the vaccine, [sign up today!](#)

## Parkside Avenue Traffic Safety Project

Increasing traffic safety along Parkside Avenue through street and trail improvements.

HOME OUR TEAM RESOURCES

### About

Parkside Avenue has a higher rate of severe traffic crashes than the average Philadelphia street. To address this issue, the City met with local residents and community organizations to gather feedback on the avenue's safety. Transportation safety improvements are planned for 2020–2023.

The improvements will happen in phases. As part of this project, we will:

- Repave and restripe the roadway.
- Reorganize the roadway to calm vehicle speeds.
- Add concrete bump-outs and other intersection improvements.
- Install new signals and crosswalks, and shorten crossing distances.
- Add parking-protected bicycle lanes to help keep pedestrians and bicyclists safe.
- Add dedicated bus-boarding islands.

### Connect

[otis@phila.gov](mailto:otis@phila.gov)

[\(215\) 436-9886](tel:(215)436-9886)







# Feedback & Information Sharing: IDEAS

Further public meetings/outreach throughout summer/fall

- Early Fall public outside open house at 53<sup>rd</sup> & Parkside
- BAWP Board Meeting
- Tabling at local events
- Flyers to local properties & stakeholders
- Laminated posters with website and open house information
- Plan review and feedback loop before plans are finalized







## Questions & Discussion

Nino Ranjo, Assistant Chief Engineer, Streets Department

Matt Albrecht, Engineering Supervisor, Streets Department

Priyanka Malik, Parks & Recreation Project Manager

Allison Schapker, Fairmount Park Conservancy

Jeannette Brugger, Office of Complete Streets

[jeannette.brugger@phila.gov](mailto:jeannette.brugger@phila.gov)

