

BROWN EXPEDITING SERVICES

May 13, 2022

Philadelphia City Planning Commission
One Parkway Building
1515 Arch Street, 13th Floor
Philadelphia, PA 19102

Re: 1517 Walnut Street

Dear Beige and Sign Committee,

Please review this project for a new sign for State & Liberty Athletic Fit Menswear. It will be non illuminated pin mount letters measuring 2'-1" x 6'-6". It will be illuminated by the existing gooseneck lights.

Thank you,

Linda

1517 WALNUT STREET, PHILADELPHIA, 19102 | UNLIT STOREFRONT SIGN



1" THICK HDU LETTERS PAINTED WHITE

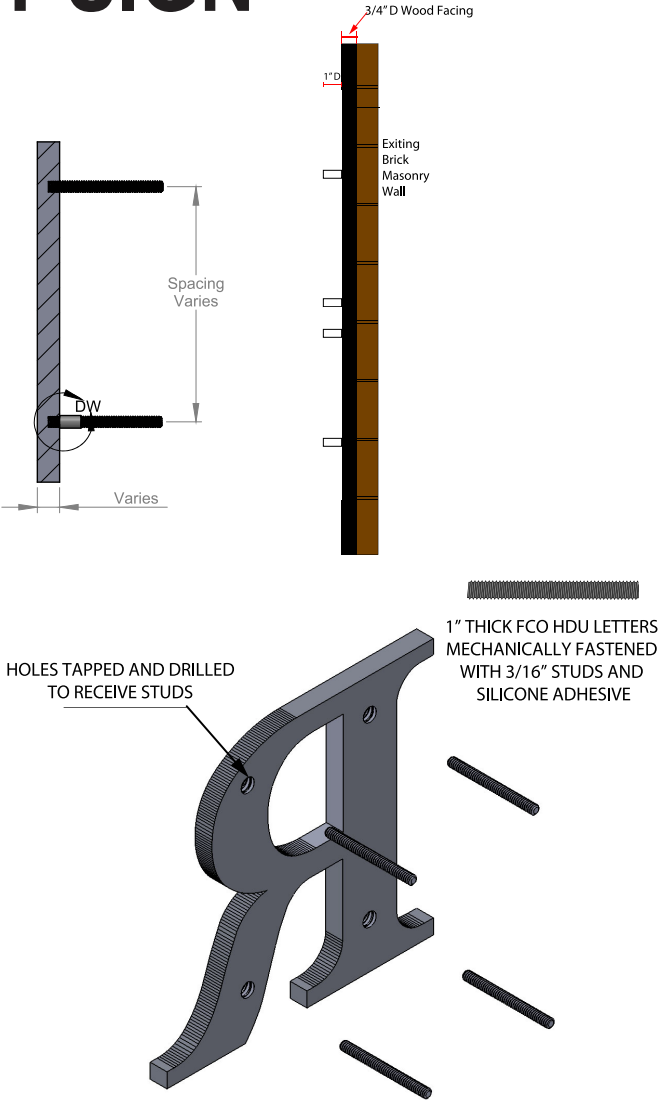
13'-6" SQ FT.




CURRENT



PROPOSED



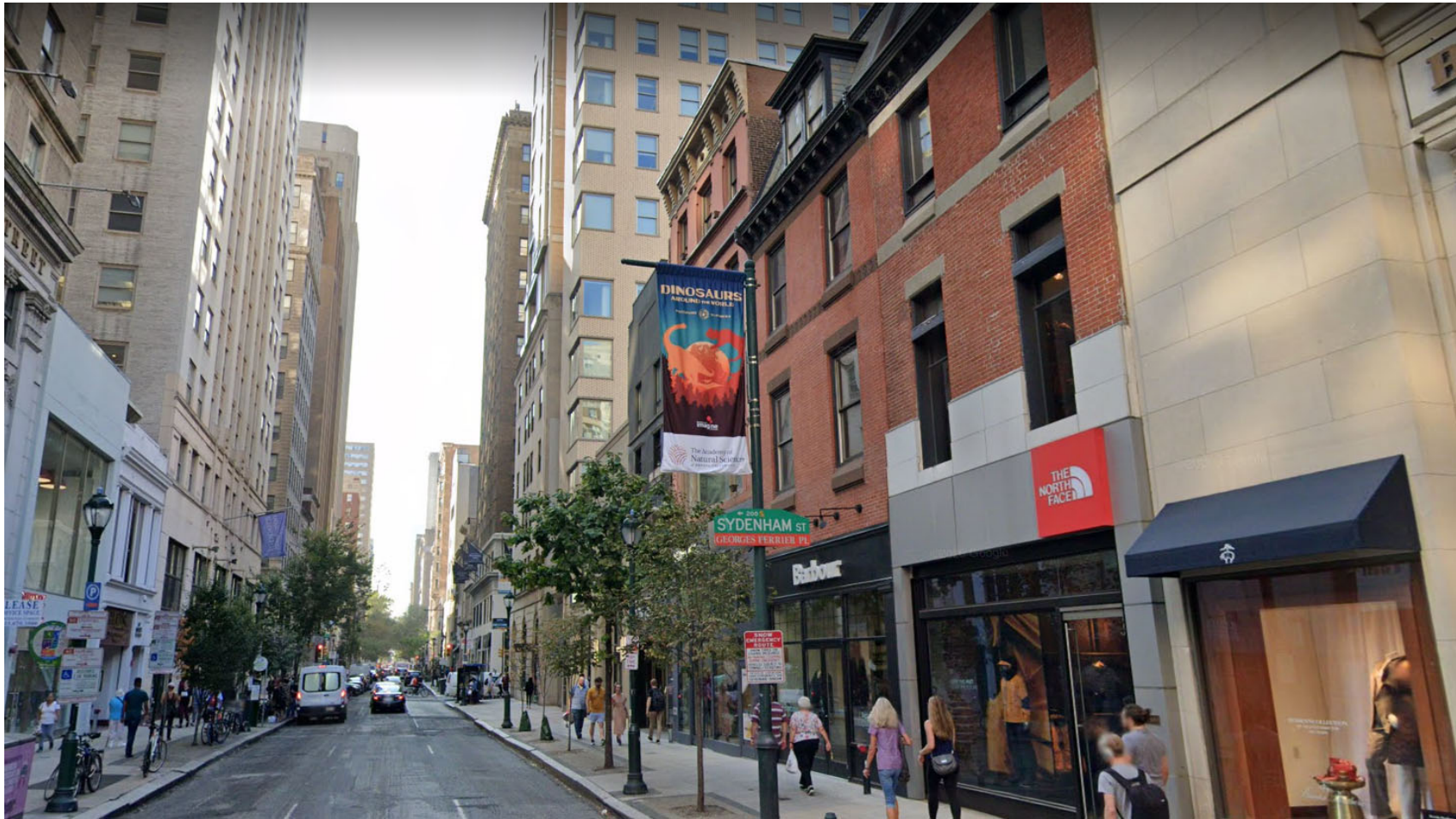
 <p>More than fast. More than signs.®</p> <p>NORTHEAST PHILADELPHIA 1701 Welsh Road Philadelphia, PA 19115 215-302-2260 fastsigns.com/2156</p>	<p>PROJECT NAME: SATE AND LIBERTY STOREFRONT SIGNAGE</p> <p>PROJECT LOCATION: 1517 WALNUT STREET PHILADELPHIA, PA 19102</p>	<p>OWNER: XXXX</p> <p>PROPERTY MANAGER: XXX</p>	<p>DATE: 05-15-22</p> <p>DRAWN BY: MS</p> <p>REVISION #: 0</p> <p>DRAWING #: 6697</p> <p>SHEET #: 1 of 1</p>	<p>SEAL AREA:</p>
---	---	---	---	--------------------------

1517 Walnut Street State & Liberty

Previous Tenant - Barbour



Walnut Street View Looking West



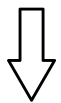
Walnut Street View Looking East





SCALE: 1"=10'

MORAVIAN



(5'-4 $\frac{1}{2}$ " - 9' - 5'-4 $\frac{1}{2}$ ")

ST

EXST CURB



Z O N E D C - 5

Z O N E D C - 5

16th (50'W) ST

89°40'

160' (REF A)

#1519

EXST 4-STY BLDG

EXST 3-STY BLDG

120' (REF A)

40'±

EXST
4-STY BLDG
(800± SF FTPRINT)

78'±

EXST
2-STY BLDG
(1,560± SF FTPRINT)

20'

20'

10'±

8'±

FUTURE ELEV BULKHEAD
ABV RF (NOT PART OF
THIS APPLICATION)

EXST 2-STY BLDG

#1515

EXST 4-STY BLDG

○ LP

TREE

PROPOSED FLAT WALL SIGN
2'-1" X 6'-6"

20'

12'

EXST
CRAWLSPACE

14'-0"±

40'± (800± SF FTPRINT)
EXST 4-STY BLDG

78'± (1,560± SF FTPRINT)
EXST 2-STY BLDG

118'± (2,360± SF FTPRINT)

EXST CURB

WALNUT



(16-26-14)

ST