

Philadelphia Trail & Sidepath Maintenance Plan

*Non-Profit Stakeholder Meeting
City of Philadelphia*

Location - Bartram's Garden
10/25/2021, 1:30 – 3:30 PM

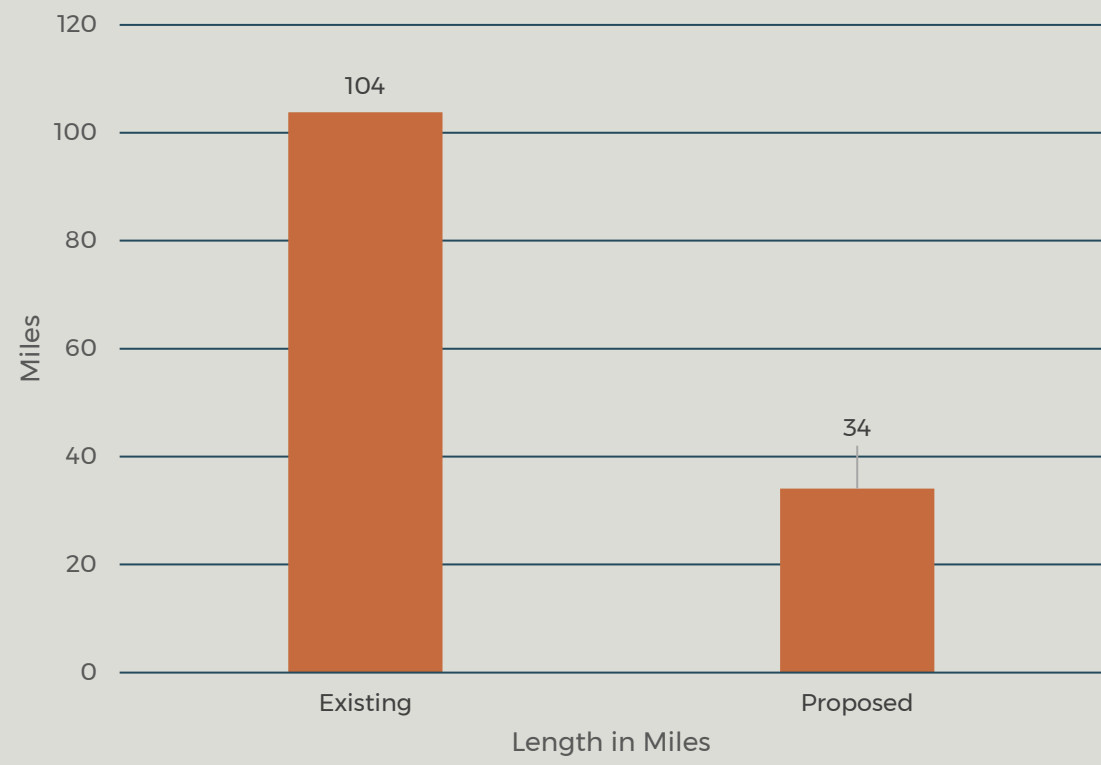
Project Schedule



* In progress

[Working Schedule]

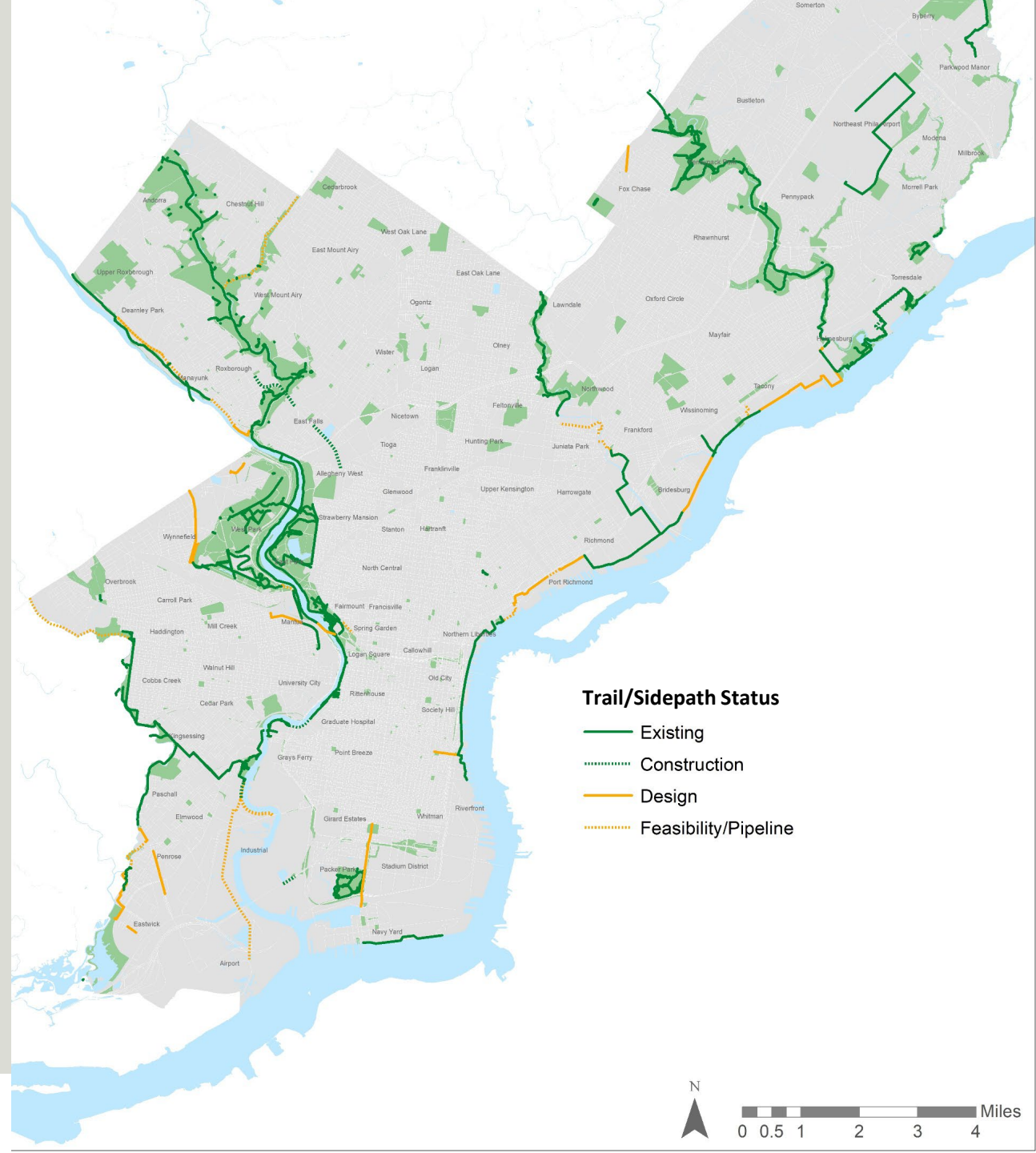
Trail/Sidepath Status



"Existing" includes only paved trails and sidepaths

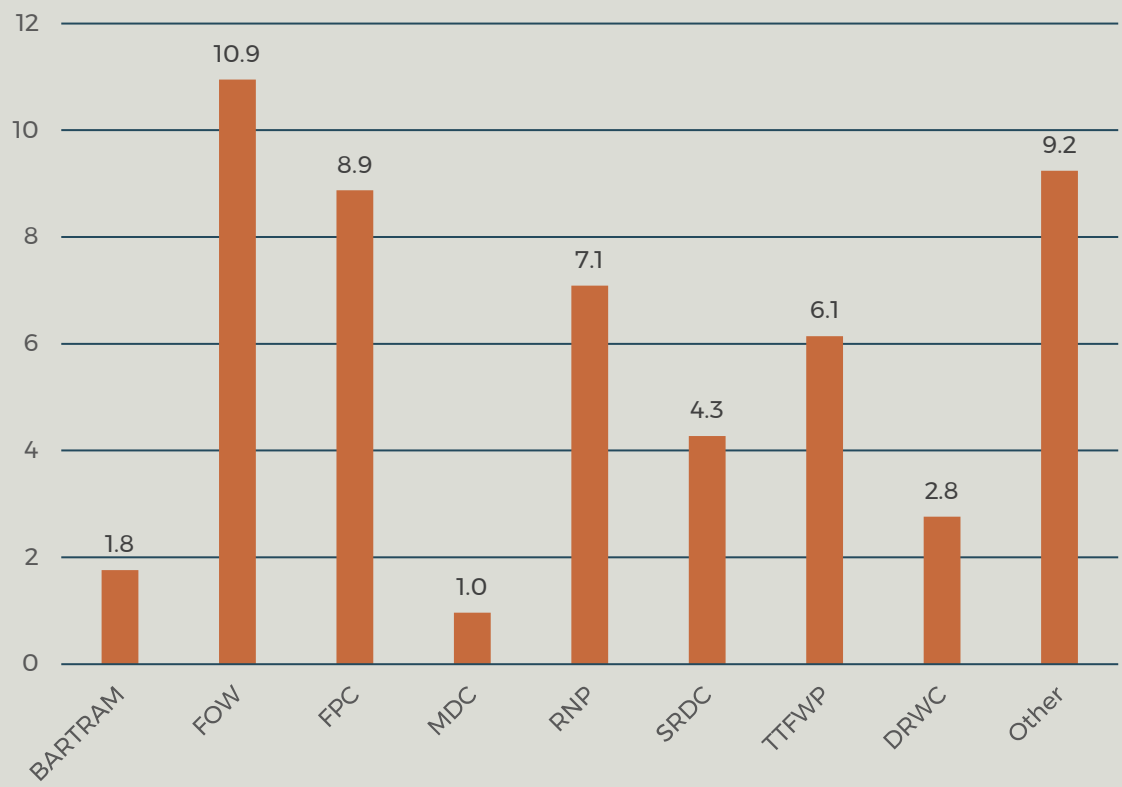
"Proposed" includes Construction, Design, and Feasibility/Pipeline

Source: Parks and Recreation and PCPC

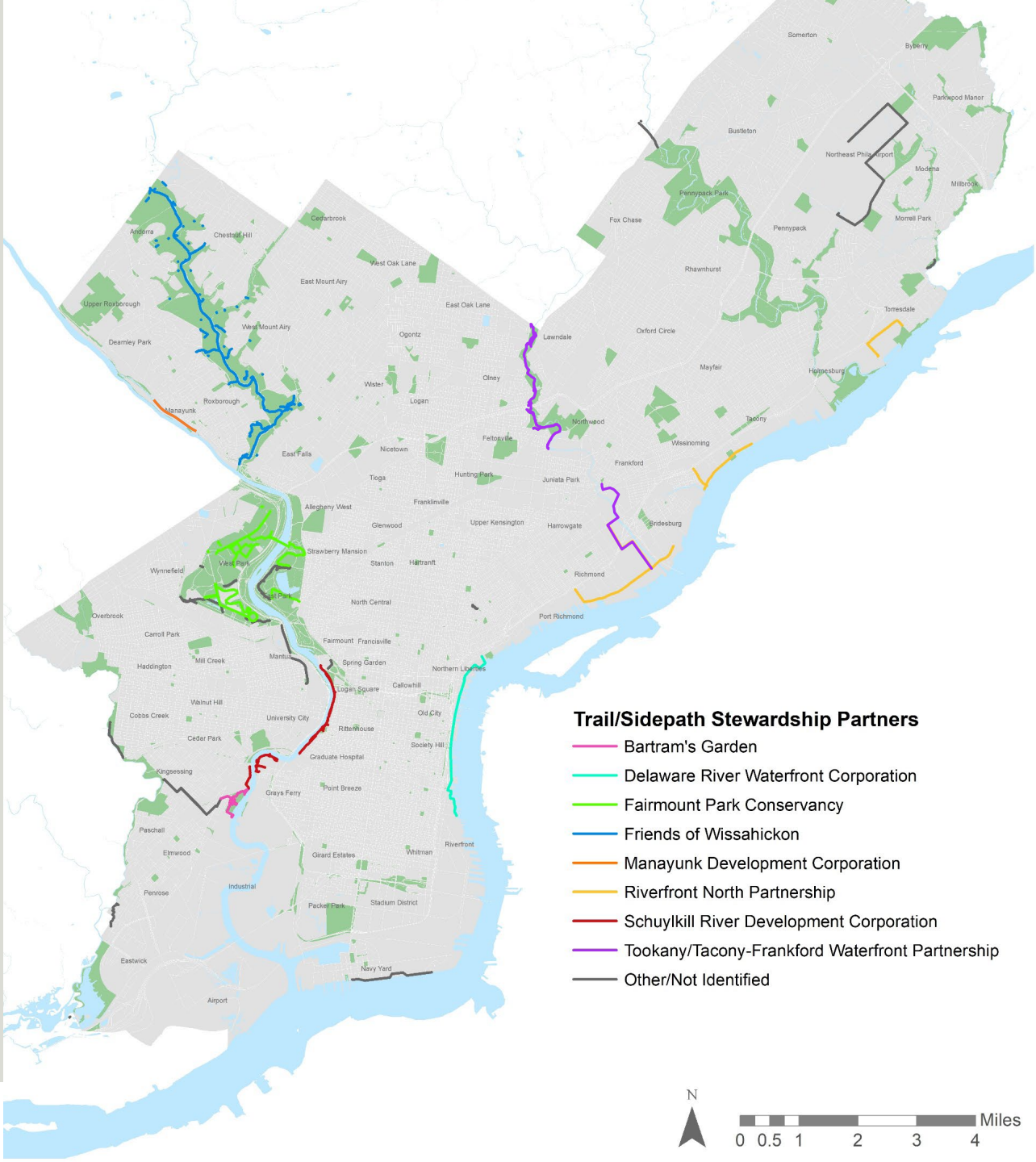


Trail/Sidepath Stewardship Partners

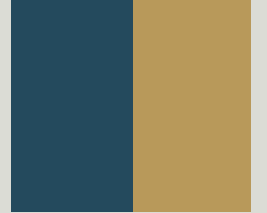
Length in Miles



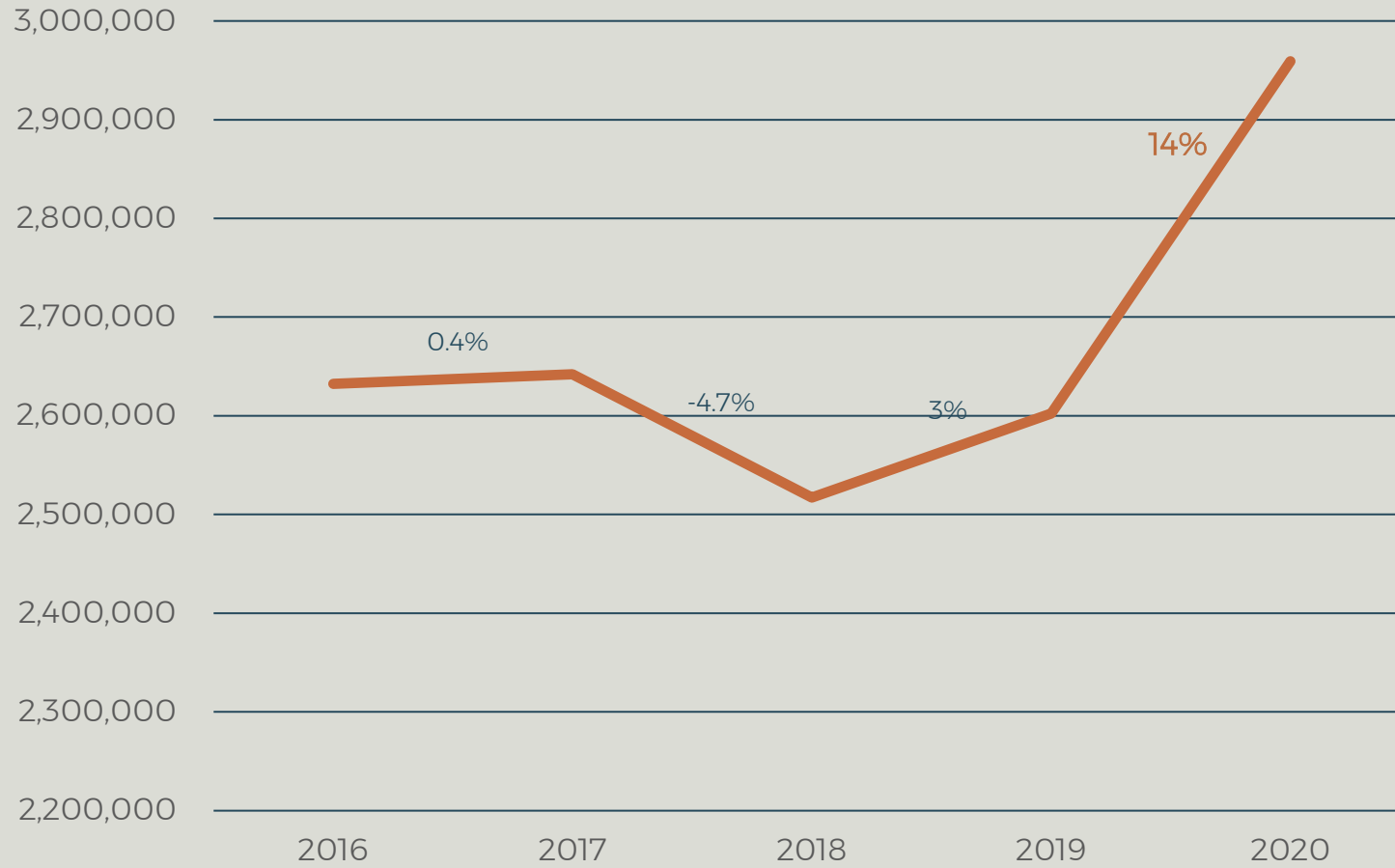
Source: Parks and Recreation and PCPC



Overall Trail/Sidepath Usage



Total Annual Users (2016-2020)



Facilities included in this analysis:
Kelly Drive, Schuylkill Banks, Port
Richmond, Wissahickon

** The trail counts are collected from DVRPC from 2014 – 2020. In certain years, the project team noticed undercounting and overcounting for specific days of the month. After careful consideration, the project team identified “consistent” average counts from adjacent years and substituted for “inconsistent” months of the year.*

Source: DVRPC

Primary Maintenance Tasks

- Mowing
- Tree Removal and Maintenance
- Vegetation Management
- Drainage Clearing
- Short Dumping
- Vandalism/Graffiti
- Fencing, Signage, Amenities
- Surface Repair
- Clearing Snow
- Skilled Trade related tasks



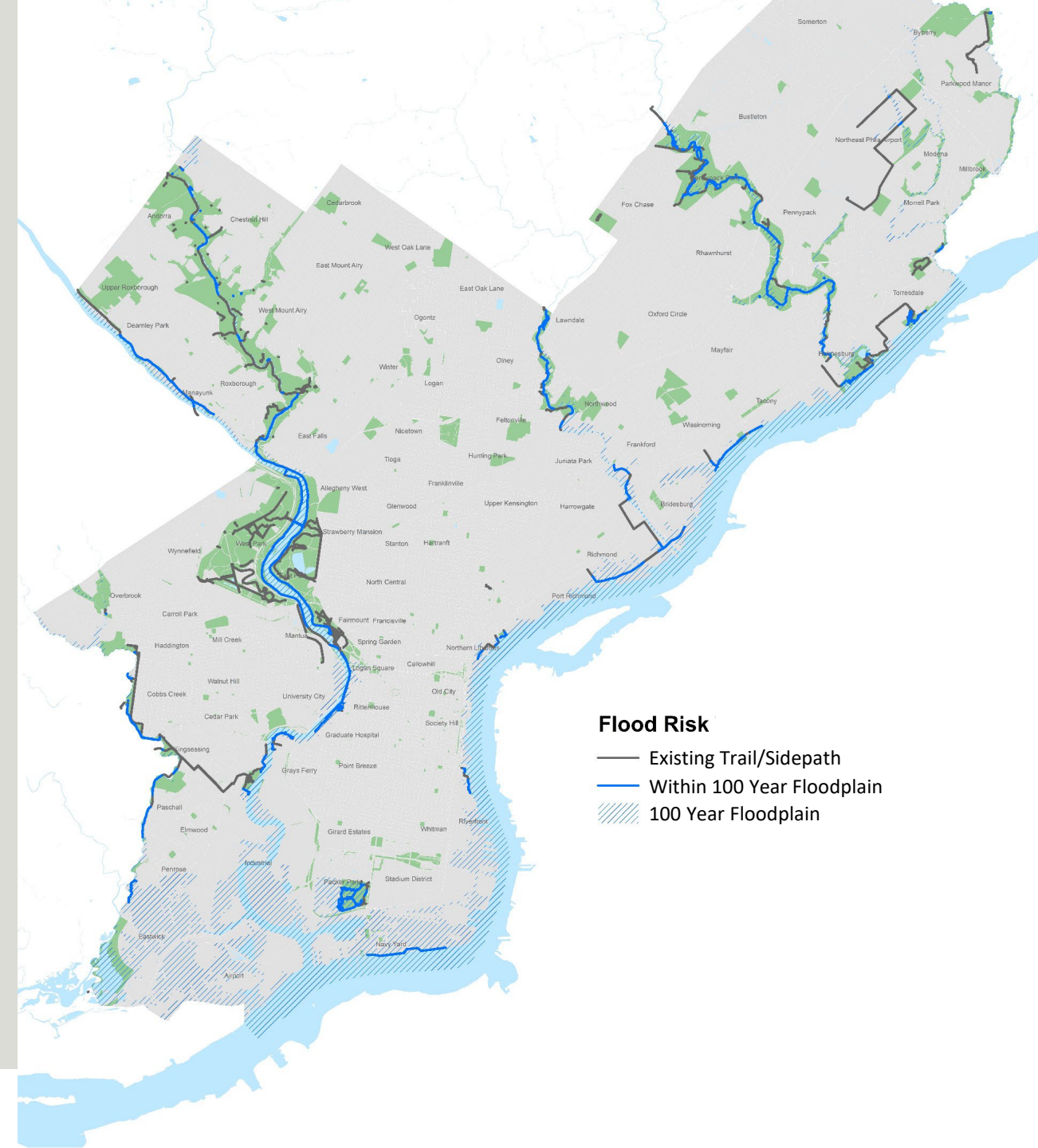
Location: Cobbs Creek



Location: Cobbs Creek

Existing Trails/Sidepaths & 100 Year Floodplain

- 42% of existing trails and sidepaths in Philadelphia are located within the 100-year floodplain



Impacts from Ida



Location: Wissahickon, Canoe Club Parking Lot



Location: Manayunk Towpath



Location: Manayunk Towpath

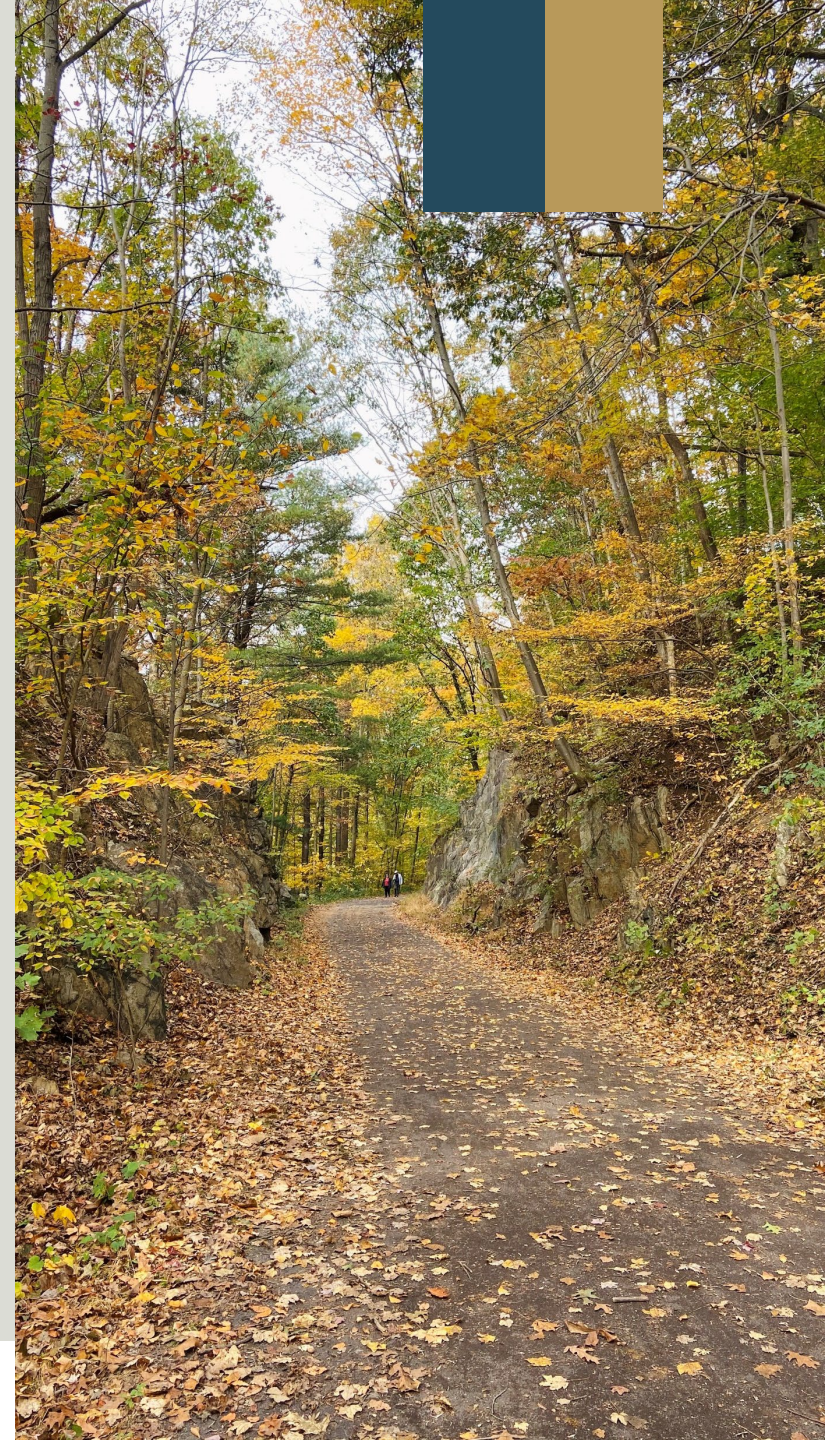
Agenda

- Discussion Questions (40 mins)
- Break (10 mins)
- Brainstorming Session (40 mins)
- Wrap Up (15 mins)



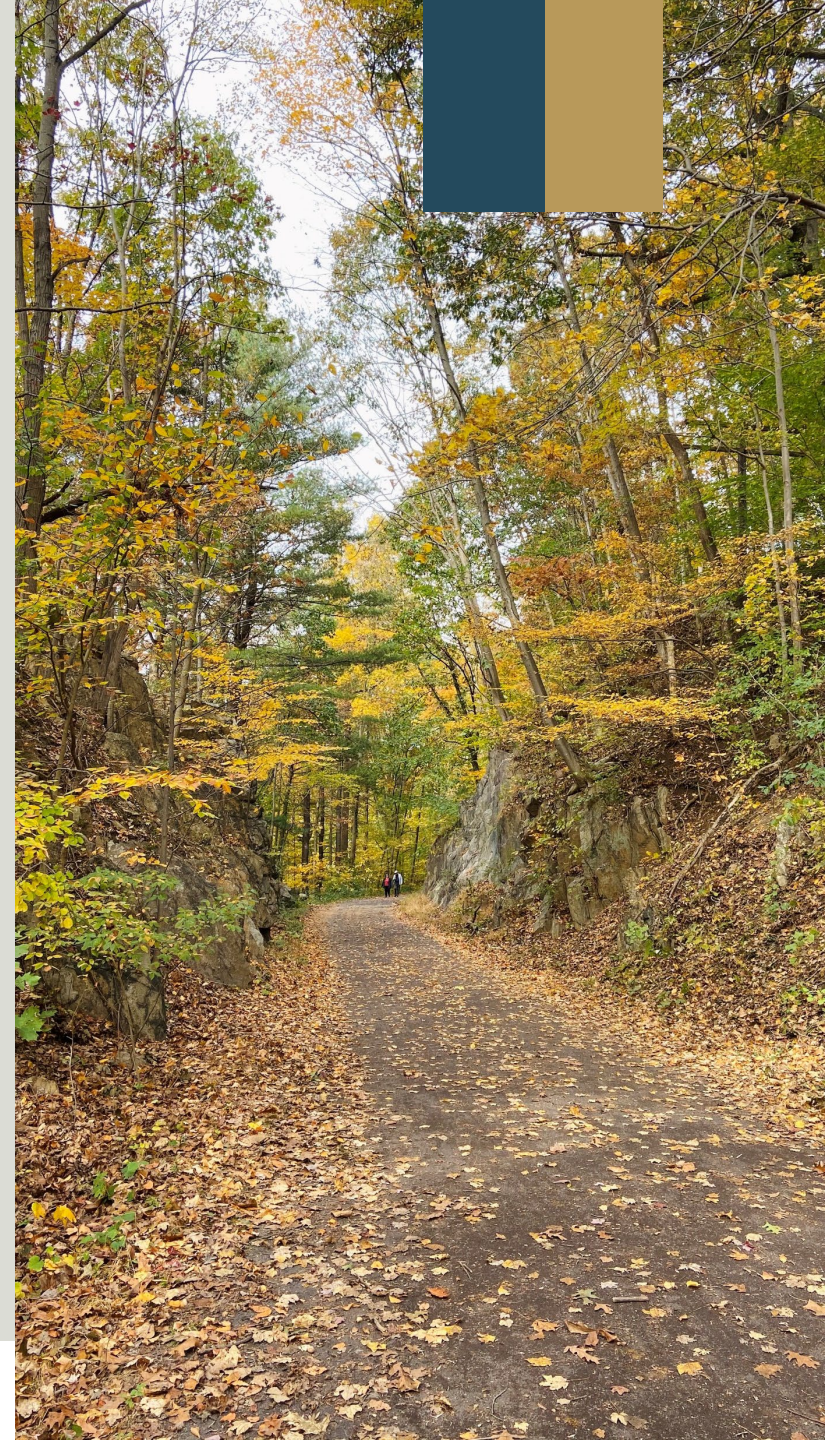
Discussion Questions

- How does trail maintenance intersect with each organization's overall responsibilities?
 - What type of trail maintenance activities does your group perform regularly?
 - How do you interact with City agencies? What are the synergies as well as challenges?



Discussion Questions

- Which trail maintenance activities does your organization prioritize and why?
 - How have maintenance needs changed over the past few years?
 - What do you anticipate being the most pressing future needs?
 - How do capital project-based partners transition to a maintenance capacity?



Brainstorming Activity

- Please use the post-it notes to record your thoughts on the following questions:
 - What is working well about trail maintenance? What is not working well about trail maintenance?
 - What actions or strategies could be employed to improve what isn't working well?
 - What are the most effective strategies to advocate for more trail maintenance dollars?

