



Francis J. Myers Recreation Center

Community Meeting
Thursday, April 21, 2022



Agenda

- Welcome and About Rebuild
- Project Background
- Existing Building Analysis
- Proposed Changes
- Options for New Outdoor Play Area
- Next Steps



Rebuild is an initiative of the City of Philadelphia to improve parks, recreation centers, and libraries in close partnership with Philadelphia Parks and Recreation, the Free Library of Philadelphia, and other City departments.

- **Equity and inclusion** drive our capital investments
- Quality community spaces build **strong and resilient communities**
- **Residents' voices** shape the improvements
- **Career pathways** are created for diverse Philadelphians
- Opportunities are available for **diverse businesses**



The Rebuild Promise

Rebuild is a historic investment of hundreds of millions of dollars in neighborhood parks, recreation centers and libraries across Philadelphia. Proposed in Mayor Jim Kenney's first budget as a part of his vision for a more equitable Philadelphia, Rebuild's promise to acknowledge history, engage the community and invest intentionally seeks to uplift pivotal community spaces, empower neighborhoods, and promote economic opportunity through diversity and inclusion.



Project Background

We're Moving Forward

PROJECT TIMELINE



Pick up a Fact Sheet today!



**Francis J. Myers
Recreation Center**
5800 Chester Avenue
Philadelphia, PA 19143

**Rebuild
PHILADELPHIA**
FACT SHEET
March 2022

More Rebuild Improvements are Coming to FJ Myers Rec Center!

WE'RE MOVING FORWARD

The Rebuild: Francis J. Myers Rec Center project is moving into the next phase of design and community engagement, which will focus on improvements to the building and outdoor spaces, such as the playground. (see Project Area map, right).

What's been done so far?

- Partnered with Eastern Pennsylvania Youth Soccer Association (EPYSA), the Philadelphia Union Foundation, and Mural Arts to design and install new soccer mini-pitch (2020-2021)
- Completed site assessment of facility (Spring 2021)
- Completed renovation of basketball and tennis courts (Summer 2021)

What's next?

- Public meeting for design: April 21st, 2022, 6:00 PM to 7:30 PM at FJ Myers Rec**
- Community survey following public meeting (see survey link below in Get Involved!)
- Community engagement in each design phase (see Schedule)

Project Area

Phase 1: Athletic Courts (Completed)

Phase 2: Building & Site (Happening Now)

GET INVOLVED!

Share your thoughts on Francis J. Myers Rec Center! Sign up for updates at tinyurl.com/FJMyersRebuildEmail or take the Spring 2022 survey at tinyurl.com/FJMyersRebuildApril2022

Rebuild also provides workforce development and business opportunities across the city. To learn more, follow the link below: <https://www.phila.gov/programs/rebuild/careers/>

ABOUT REBUILD

Rebuild is investing hundreds of millions of dollars into parks, recreation centers, and libraries. This much-needed work will provide safe and attractive spaces for recreation and education, community services, and other essential programs. The Rebuild process promotes inclusion and opportunity for diverse businesses and individuals, empowers community voice, and supports the well-being of Philadelphians.

Building stronger communities. One park, rec center, and library at a time.
Rebuild.phila.gov · [#RebuildPHL](https://twitter.com/RebuildPHL) · rebuild@phila.gov

Project Background

Meet the Engagement and Design Team



KARA MEDOW

*Senior Design and Construction
Project Manager*

AMANDA COLON-SMITH

Community Engagement Director

DIGSAU

SARAH CURRY

Project Designer

BRIAN McVEIGH

Project Designer

JENN REZELI

Director of Impact

Ground Reconsidered

**TOM
MAHONE**

*Landscape
Architect*



HENRY FELSMAN

*Manager of Planning and
Community Engagement*



KEISHA SCOVENS

Dir. of Community Outreach

TARSHA SCOVENS

Dir. of Programming



A **commitment** to community engagement



FRANCIS J MYERS RECREATION CENTER

AERIAL

- Rebuild Priority
- Focus Area



Project Background

Building History



1904



2020

Originally designed as an orphanage!

Project Background

Sports Courts & Mini-Pitch



Early Findings

What We've Heard So Far

- Site Assessment
- Stakeholder Interviews
 - FJ Myers Rec Advisory Council
 - Empowered CDC
 - Southwest CDC
 - Mitchell Elementary
 - Independence Charter School West
 - Junior Farmers
 - RR Soccer Academy
 - Lone Star FC
- Program Analysis
- Ongoing Discussions with FJM Staff and PPR

IDENTIFIED NEEDS & ISSUES

SITE ASSESSMENT

- Wayfinding needs
- Accessibility issues
- Need for systems upgrades
- Security concerns
- Programming space needs
- Aging play equipment
- Restroom conditions
- Stormwater management

STAKEHOLDER INTERVIEWS

- Unused / underused space
- Insufficient sizing of rooms for events
- Lack of lighting, dark hallways (especially natural light)
- No views – windowless rooms
- Interior views insufficient for security and safety
- Inadequate athletic facilities (including gym)
- Lack of seating at athletic facilities
- Inadequate heating, cooling, and ventilation
- Lack of secure storage
- General sense of the building being old (rust, lack of lighting)

PROGRAM ANALYSIS

- Scheduling needs for 2-3 small rooms, 4 medium rooms, and 2 large rooms (1 divisible)
- Certain programs/events better suited for certain rooms based on security and acoustics
- Current floorplan is difficult to navigate, making the case for a clearer layout of programs with better visibility in and out of rooms

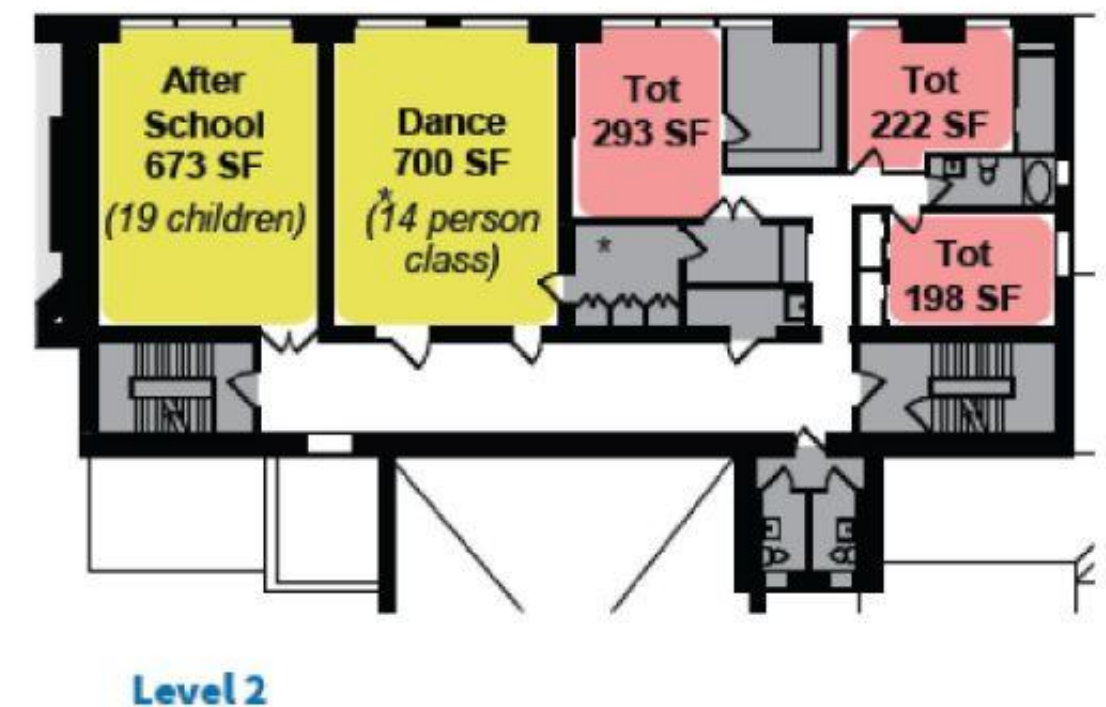
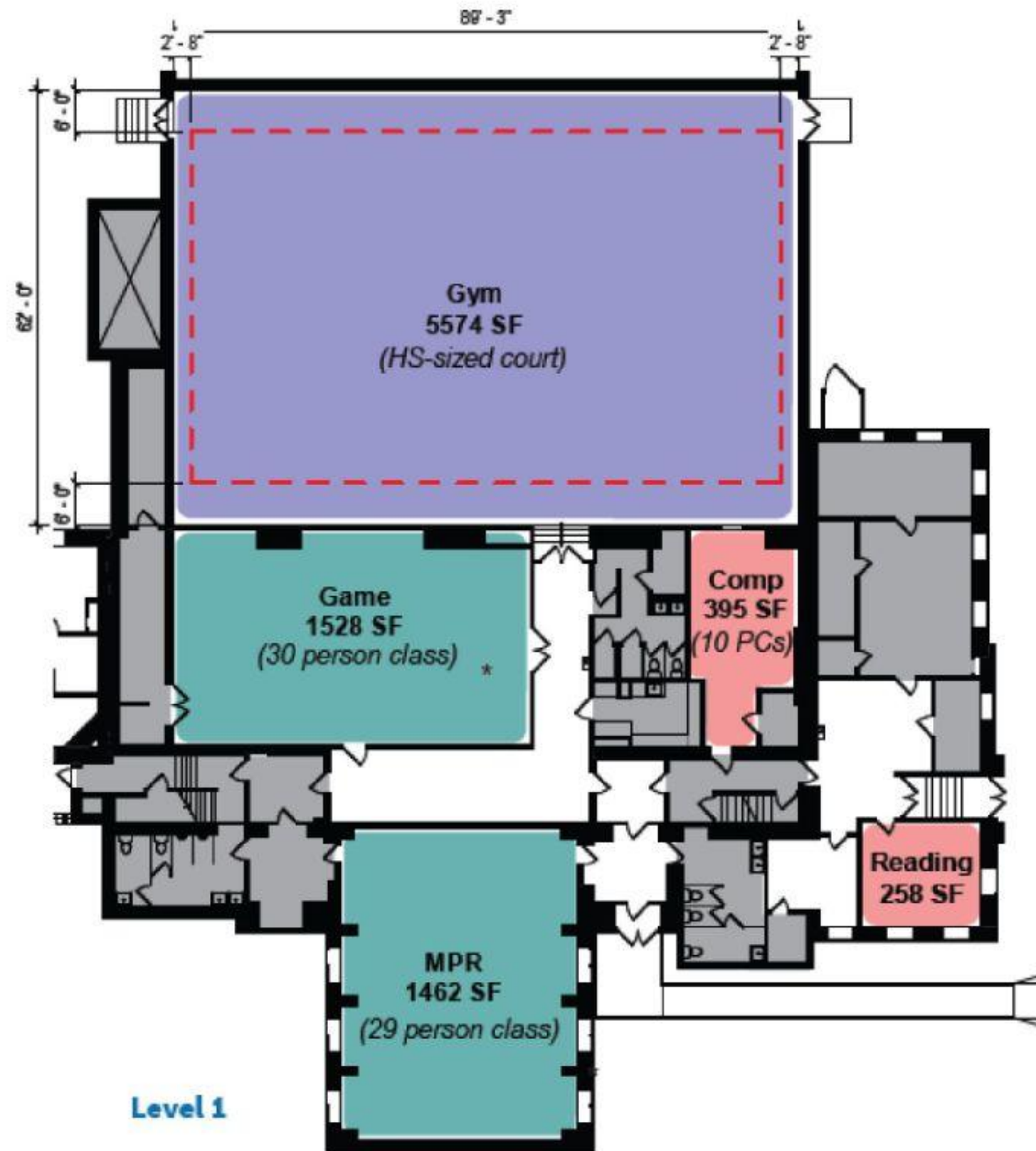
View the boards for a closer look!

Early Findings

Required Improvements to be Included in the Rebuild Project

- **New** renovated restrooms
- **New** heating and cooling systems
- **New** electrical and lighting upgrades
- **New** additional exits
- **New** added security cameras, and clear lines of sight
- All ramps, stairs, surfaces brought to code for **safety/accessibility** reasons
- **New** fire protection sprinkler system
- **Foundation improvements** where leaking
- **New** elevator and ramps to accommodate accessibility issues
- Sustainability upgrades for **LEED Silver Certification**

Existing Recreation Center



Program Analysis

CURRENT WINTER '22

PERMITTED SCHEDULE FJM REC CENTER WINTER 2021

Newsome B-Ball League Su • 9a - 4p	Adult B-Ball W • 6p - 8:30p
After School Program M T W H F • 3p - 6p	Young Kings H • 5:30p - 8:30p
Phlex Fitness Sa • 11a - 2:30p	Coach Kerron F • 6p - 8:30p
Phlex Fitness W F F • 5:30p - 8:30p	Line Dancing M H • 6p - 8p
Face Off ? M • 5:30p - 7p	MEETINGS T
Dance Team ? T • 6p - 8:30p	QuintEssence Elite Models W • 5p - 7p
Band Practice H • 6p - 8:30p	MMG ? T H • 6:30p - 8:30p
Open Gym M W F • 3p - 5:30p	
SLA BB T H • 3:30p - 5:30p	
Open Youth B-Ball Free Play F • 3p - 5p	
Mass Confusion ? M • 6p - 8p	
CUTTS T • 6p - 7:30p	

INTEND TO BRING BACK

Bravohood Mentoring
Princess in Bloom
Renegade Dance Team
Indoor Soccer
Gymnastics
Master Class
Aerobics
Game Night/Myers Youth Club

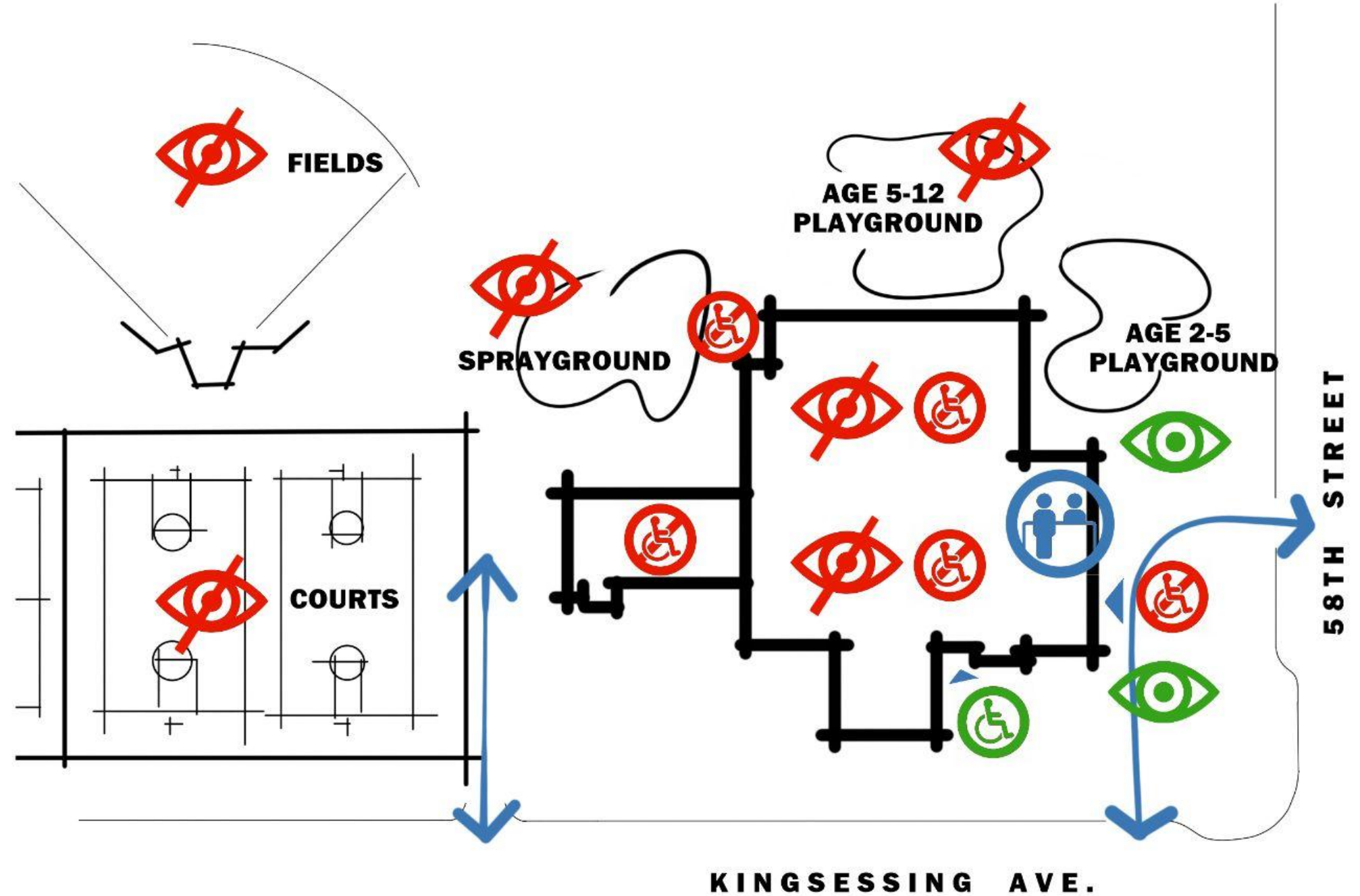
SCHEDULE FROM 2021

Key Spot Computer Access M T W H F • 3p - 9p	Princess in Bloom M W • 5p - 8p
Legal Aid M • 6p - 8p	QuintEssence Elite Models T • 6p - 8p
Arts and Crafts T H • 4p - 6p	"Magic Music" Drill Team T H • 6p - 9p
Scrabble Club F • 5p - 7p	Mindful Arts Tumbling, Dance... W • 4p - 8p
After School Program M T W H F • 3p - 6p	School Team M T W H F • 3p - 6p
Line Dancing M • 7p - 9p	Open Gym M • 6p - 9p
Hip Hop Dancing T H • 6p - 9p	OGY Basketball T H • 6p - 9p
Fit Camp W • 7p - 9p	16-U Basketball W • 6p - 9p
Narcotics Anon F • 6p - 8p	Clutch Workouts F • 6p - 9p
Bravohood Mentoring M W • 5p - 8p	STUDY HALL T F • 1:30p - 3:00p
K.I.D.S. Inc I.C.U. Clinic T F • 6p - 8p	Etiquette for Ladies Sa • 9a - 11:30a
Eastern Stars H • 6p - 8p	Cornerstone School Gym Use M T W H F • 10a - 2p
R.E.D. Team Dance Practice M W • 6p - 8p	Gateway to ReEntry Sa • N - 2p
Spartan Cheerleaders T H • 6p - 9p	

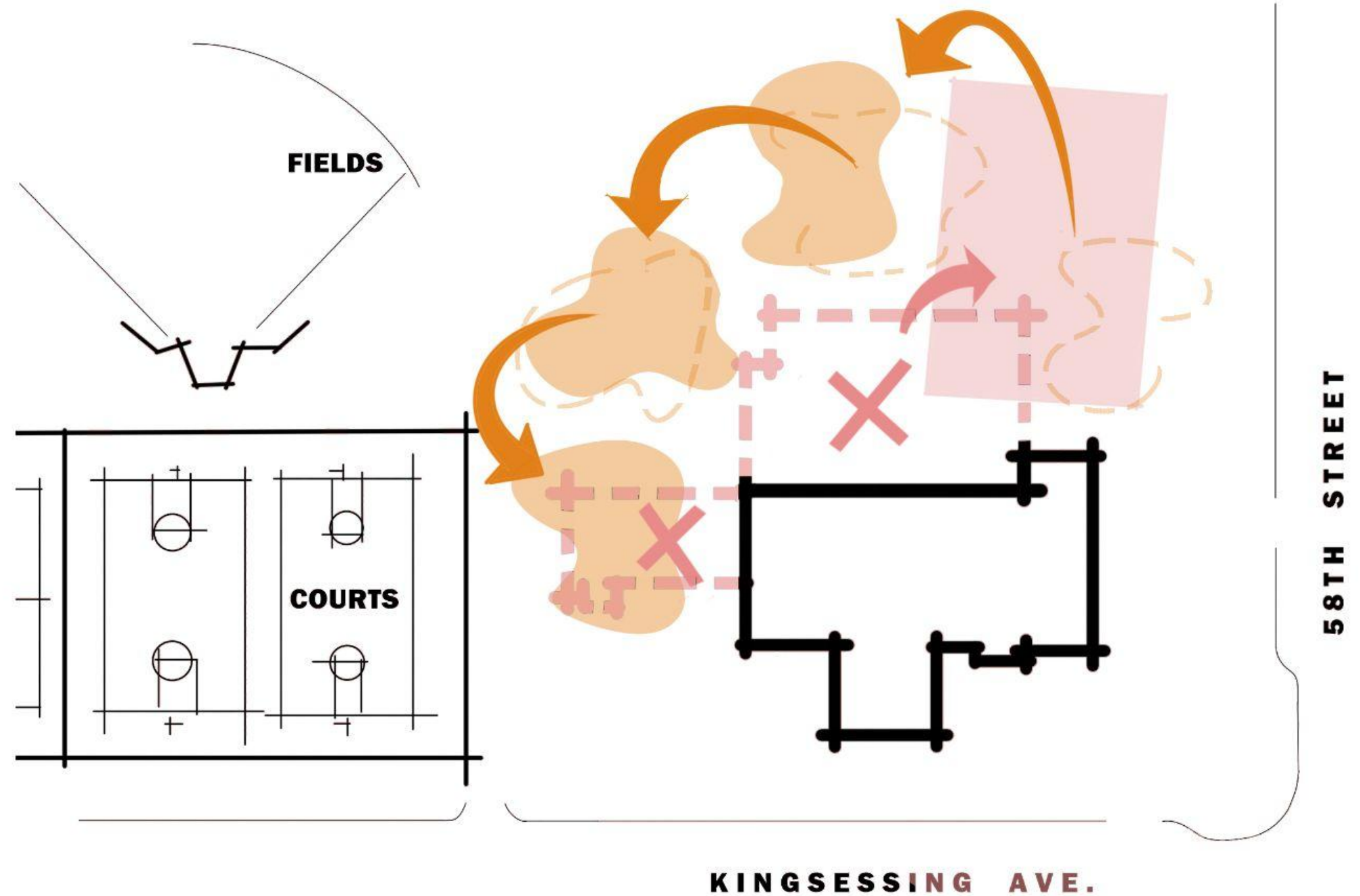
Program Analysis

	Monday		Tuesday		Wednesday		Thursday		Friday		
	Afternoon	Evening	Afternoon	Evening	Afternoon	Evening	Afternoon	Evening	Afternoon	Evening	
SMALL #1											
SMALL #2	Computer Access 55 people		Computer Access 55 people		Computer Access 55 people		Computer Access 55 people		Computer Access 55 people		
SMALL #3		Bravohood Mentoring 9 people		K.I.D.S./I.C.U. 8 people		Bravohood Mentoring 9 people		K.I.D.S./I.C.U. 8 people		Scrabble 4 people	
MED #1	After School 17 people		After School 17 people		After School 17 people		After School 17 people	Band Practice 8 people	After School 17 people		
MED #2				Phlex Fitness 15 people		Phlex Fitness 15 people		Phlex Fitness 15 people		Phlex Fitness 15 people	Phlex Fitness 15 people
MED #3		Face Off (R.E.D.) 15 people		QuintEssence 10 people		Face Off (R.E.D.) 15 people	Game Night/Myers Youth Club 12-50 people				Etiquette for Ladies 15 people
LARGE #1		Princess in Bloom 20 people		"Magic Music" 25-40 people		Princess in Bloom 20 people		"Magic Music" 25-40 people			
GYM		Mass Confusion 12-18 people	SLA BB 35-100 people	OGY B-ball 10-12 people		16-U B-ball ? people	SLA BB 35-100 people	OGY B-ball 10-12 people	Open Youth Free Play 12-18 people	CUTTS 12-18 people	Newsome B-Ball 10-14 people
LARGE #2		Line Dancing 19 people	MEETINGS ? people	Face Off (R.E.D.) 15 people	Mindful Arts Tumbling, Dance... 7-22 people			Line Dancing 19 people	Master Class 6-10 people		
								Phlex Fitness 15 people			
MED #4				Phlex Fitness 15 people		Phlex Fitness 15 people				Phlex Fitness 15 people	

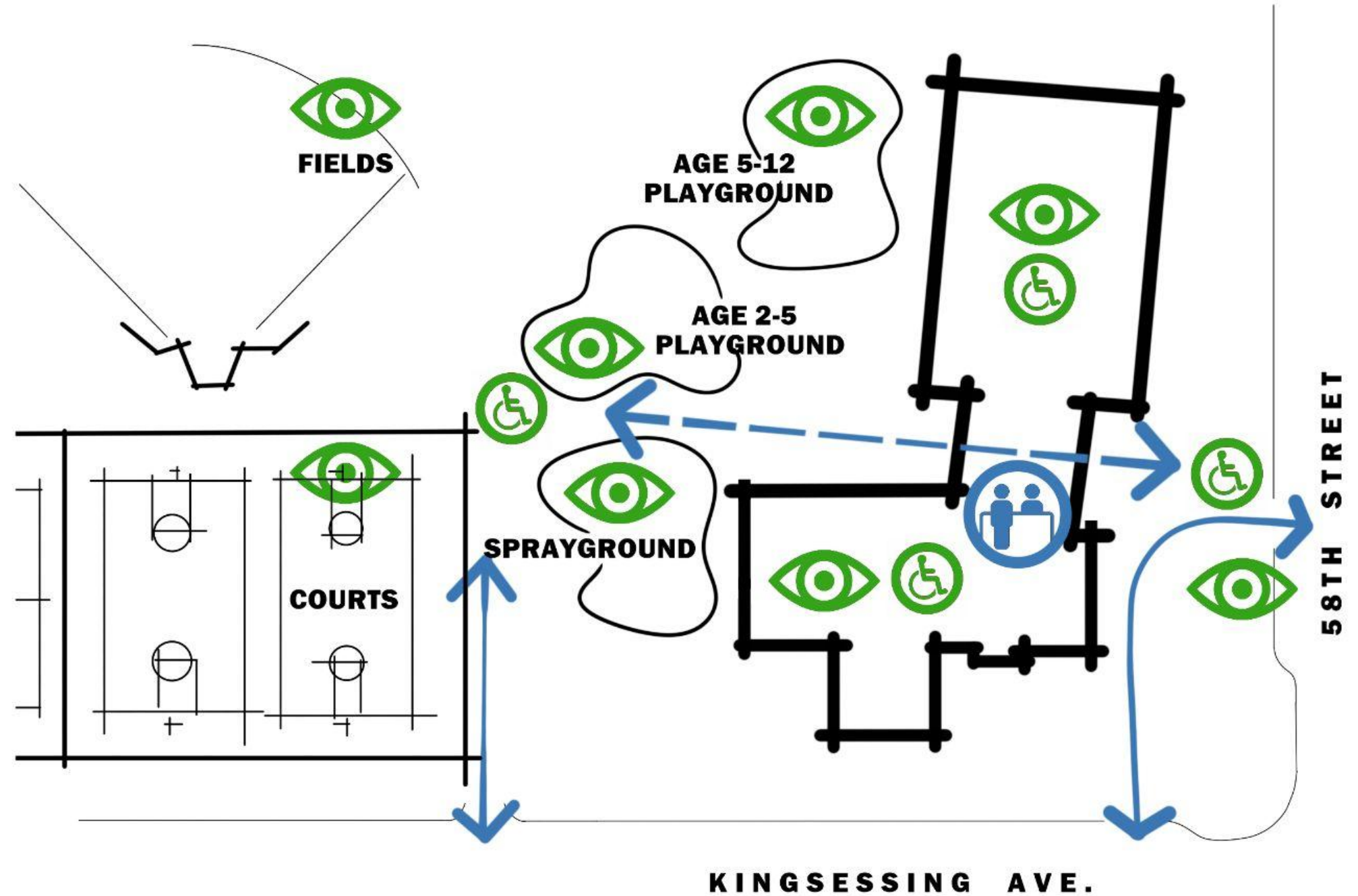
Facility Assessment



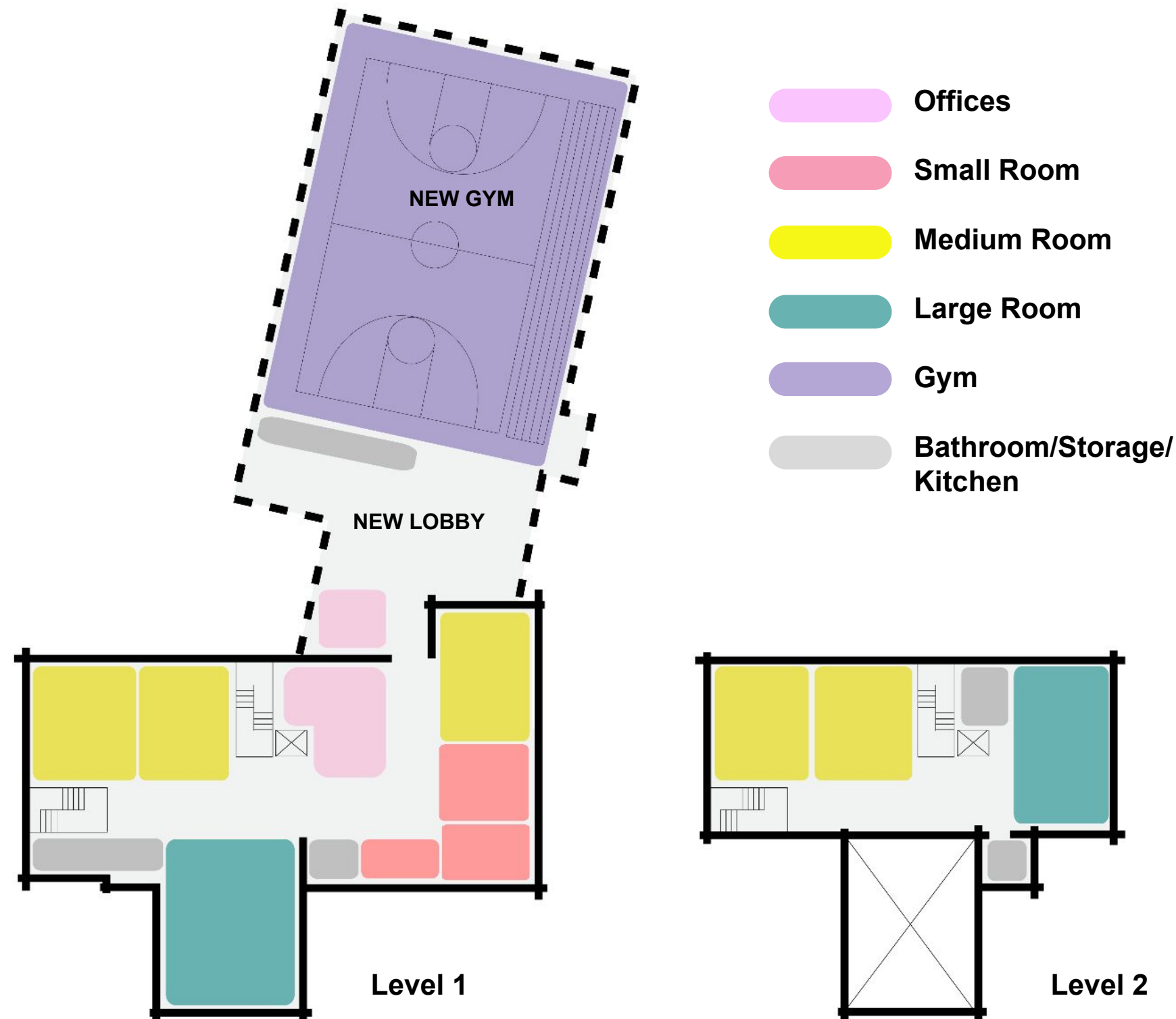
Proposed Changes



Proposed Changes



Proposed Changes



BENEFITS OF THE PROPOSED CHANGES:

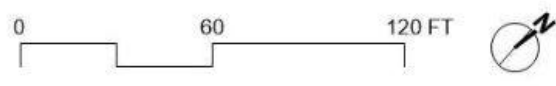
- Create an accessible and welcoming recreation center
- Optimize building flow
- Streamline and secure the interior layout
- Replace older / broken systems (plumbing / electrical / heating + cooling)
- Provide visibility to fields and outdoor activities

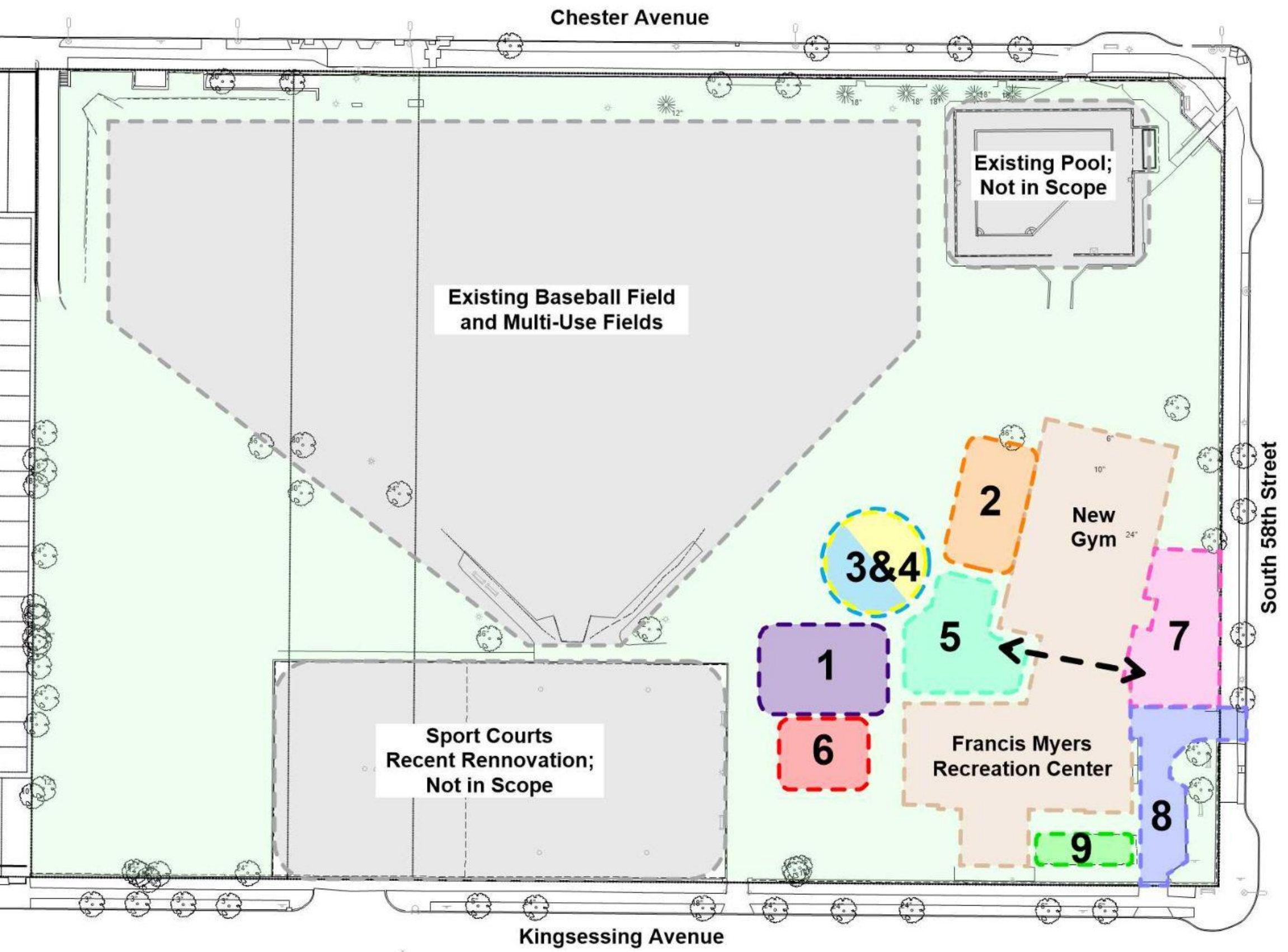


LEGEND

- 1. Playground (Ages 5-12)
- 2. Playground (Ages 2-5)
- 3. Sprayground
- 4. Performace Plaza
- 5. Passive Recreation / Social Space
- 6. Adult Fitness Equipment
- 7. Pedestrian Entrance
- 8. Vehicular Driveway
- 9. Existing Vegetable Garden

Site Concept Diagram 1





LEGEND

- 1. Playground (Ages 5-12)
- 2. Playground (Ages 2-5)
- 3. Sprayground
- 4. Performace Plaza
- 5. Passive Recreation / Social Space
- 6. Adult Fitness Equipment
- 7. Pedestrian Entrance
- 8. Vehicular Driveway
- 9. Existing Vegetable Garden

Site Concept Diagram 2

Next Steps

- Share your feedback today through May 9th at www.tinyurl.com/FJMyersRebuildApril2022
- Sign up for updates at www.tinyurl.com/FJMyersRebuildEmail
- Spread the word!

Stay tuned
for updates! → → →



PROJECT TIMELINE



FRANCIS J MYERS RECREATION CENTER

WE WANT YOUR INPUT ON
THE FUTURE OF
FRANCIS J MYERS
RECREATION CENTER!

SURVEY OPEN
APRIL 21ST -
MAY 9TH, 2022

SCAN HERE TO TAKE
THE SURVEY ONLINE!



or visit [tinyurl.com/
FJMyersRebuildApril2022](http://tinyurl.com/FJMyersRebuildApril2022)



COMMUNITY SURVEY

FRANCIS J. MYERS RECREATION CENTER

Improvements are coming to FJ Myers Rec as part of the City of Philadelphia's Rebuild program. Right now, we are seeking input from you on design opportunities for the site. Some questions, like your age, help to make sure we are hearing from all types of households, but you are free to skip questions you do not want to answer. All answers will be kept confidential.

Tell us about your rec center

What experiences at the rec center have been important to you?

What is special about the rec center that is important to preserve?

What We've Learned: Based on a site assessment, an in-depth analysis of past and current programming, stakeholder interviews, and ongoing discussions with rec staff, Rebuild learned of several key issues with the building. The new concept design for the building establishes a framework for how a redesign of the building could address some of these issues.

Of the issues that we've heard so far (listed below), what do YOU think are the most important to address? (Check top 3)

- ☐ Lack of accessibility
- ☐ Lack of windows and ventilation
- ☐ Lack of visibility from the front desk
- ☐ Inefficient use of space
- ☐ Old equipment and furniture
- ☐ Inadequate heating/cooling
- ☐ Too many hallways
- ☐ Lack of functional bathrooms
- ☐ Other: _____

Which features of the new design would you be the most excited about? (Check top 3)

- ☐ New and enlarged gymnasium
- ☐ New playground
- ☐ New lobby space between gym and rest of building
- ☐ Moving the playground closer to the outdoor athletic facilities
- ☐ Improved sightlines and visibility on 1st floor
- ☐ Right-sizing rooms for more flexible programming space
- ☐ Other: _____

What would you like to see in a NEW GYM?

What would you like to see in a NEW LOBBY?

Anything else? What opportunities for new or improved programs could be created by the new design?



Turn over →

Tell us about the outdoor areas

What do you like about the current playground?

Where would you prefer the new sprayground to be located?

- ☐ Near the playground
- ☐ Near the pool
- ☐ No preference

How would you describe your experience with the community garden?

- ☐ I use it often
- ☐ I would like to use it more
- ☐ I have used it a few times
- ☐ I have not used it
- ☐ Other: _____

What are your favorite things to do at playgrounds? (Check top 3)

- ☐ Balancing
- ☐ Climbing
- ☐ Jumping
- ☐ Rocking
- ☐ Sliding
- ☐ Spinning
- ☐ Swinging
- ☐ Water play
- ☐ Other: _____

What else would you like to see outside?

- ☐ Game tables (chess, checkers, etc.)
- ☐ Adult fitness equipment
- ☐ A larger stage
- ☐ Other: _____

Tell us about yourself

Name: _____

Email or Phone Number: _____

ZIP Code: _____

How far do you live from FJ Myers Rec?

- ☐ Less than 3 blocks away
- ☐ 4 to 5 blocks away
- ☐ 6 to 10 blocks away
- ☐ More than 10 blocks away

Gender:

- ☐ Female identifying
- ☐ Male identifying
- ☐ Other
- ☐ Prefer not to say

Age:

- ☐ Under 12
- ☐ 12 to 18
- ☐ 19 to 24
- ☐ 25 to 44
- ☐ 45 to 64
- ☐ 65 +

Race or ethnicity:

- ☐ Asian/Pacific Islander
- ☐ Black/African American
- ☐ Caucasian/White
- ☐ Hispanic/Latino
- ☐ Other
- ☐ Two or more races
- ☐ Prefer not to say

ABOUT REBUILD

Rebuild is investing hundreds of millions of dollars into parks, recreation centers, and libraries. This much-needed work will provide safe and attractive spaces for recreation and education, community services, and other essential programs. The Rebuild process promotes inclusion and opportunity for diverse businesses and individuals, empowers community voice, and supports the well-being of Philadelphians.



Building stronger communities.
One park, rec center, and library at a time.
Rebuild.phila.gov · #RebuildPHL · rebuild@phila.gov

Thank you!
rebuild@phila.gov