



February 22, 2022

Beige Berryman  
Art and Design Manager  
Philadelphia City Planning Commission  
One Parkway Building  
1515 Arch Street, 13th Floor  
Philadelphia, PA 19102

PARKS FOR  
PEOPLE  
PHILADELPHIA  
1608 Walnut St.  
Suite 302  
Philadelphia, PA  
19103  
215.240.7710  
tpl.org

Re: F. Amedee Bregy Schoolyard Improvement Project  
1700 Bigler St, Philadelphia, PA 19145

Dear Ms. Berryman,

This letter is to request to be included in the Art Commission meeting on March 9<sup>th</sup> to review the F. Amedee Bregy Schoolyard Improvement Project for its Final Approval. The site is located in South Philadelphia and the area surrounding the site is primarily residential. The school property occupies one city block, and the schoolyard is in the southern portion of that parcel. The schoolyard is approximately 40,000 square feet, and is absent of any amenity. The existing asphalt paving is cracked and in poor condition. The F. Amedee Bregy School community uses the current asphalt schoolyard for recess and other school programs.

The Project, designed by the students and community members, is a schoolyard renovation and consists of the removal and repair of existing asphalt paving and the installation new amenities for the use of the school and neighbors. The project scope includes furnishings, an artificial turf multipurpose field, running track, play structures with safety surfacing, a basketball court, stage and outdoor learning area. In addition to the community amenities, the project is also designed to manage stormwater runoff from the schoolyard and adjacent parking lot and streets. The project includes new shade trees, porous surfacing, and rain gardens with native perennial plantings. We appreciate the Concept Approval we received in December 2021, and feel that the designers have addressed the concerns raised by the commission at that meeting.

I will be the person who will manage the Art Commission questions and submit all the required documents for review and approval. The commission's decision can be sent to me via email or using the mailing address, above. You can contact me by email at [kari.sannino@tpl.org](mailto:kari.sannino@tpl.org) or by phone at 267.946.7551.

Sincerely,

A handwritten signature in black ink that reads "Kari Sannino".

Kari Sannino  
Philadelphia Program Manager  
The Trust for Public Land



# F. Amedee Bregy Schoolyard Improvement Construction Budget

1700 Bigler St, Philadelphia, PA 19145

Date: March 1, 2022

PARKS FOR  
PEOPLE  
PHILADELPHIA  
1608 Walnut St.  
Suite 302  
Philadelphia, PA  
19103  
215.240.7710  
tpl.org

Source	Amount
The Trust for Public Land	\$372,000.00
Philadelphia School District	\$275,000.00
Philadelphia Water Department Stormwater Incentives Grant	\$743,000.00
Estimated Total Construction Cost*	\$1,390,000.00

\*Cost of green inlet installation and stormwater infrastructure improvements in the street rights-of-way are not included and will be bid separately by the PWD.



# F. AMEDEE BREGY SCHOOL

## SITE IMPROVEMENTS THE SCHOOL DISTRICT OF PHILADELPHIA

ART COMMISSION SUBMISSION FOR FINAL APPROVAL

MARCH 9, 2022



## Project Location



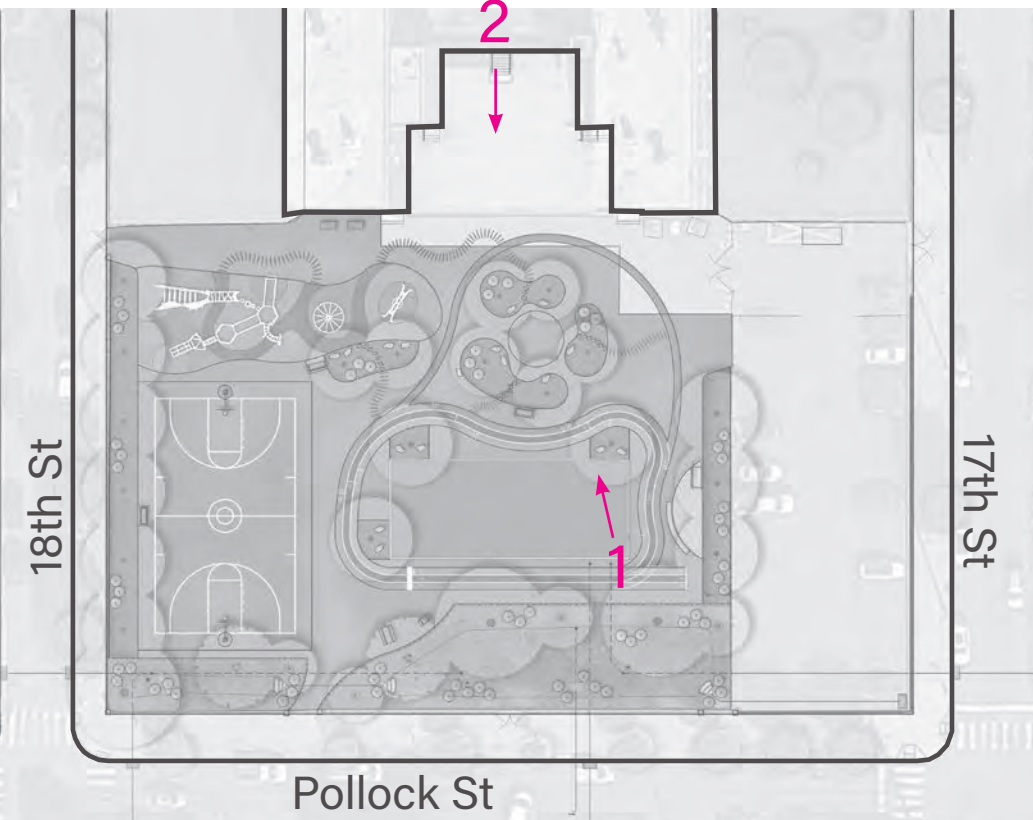
# Existing Conditions



1. View of the rear of Amedee F. Bregy School from the school yard, looking north.



2. View of the school yard, looking south toward Pollock Street.



Key Map  
N.T.S.



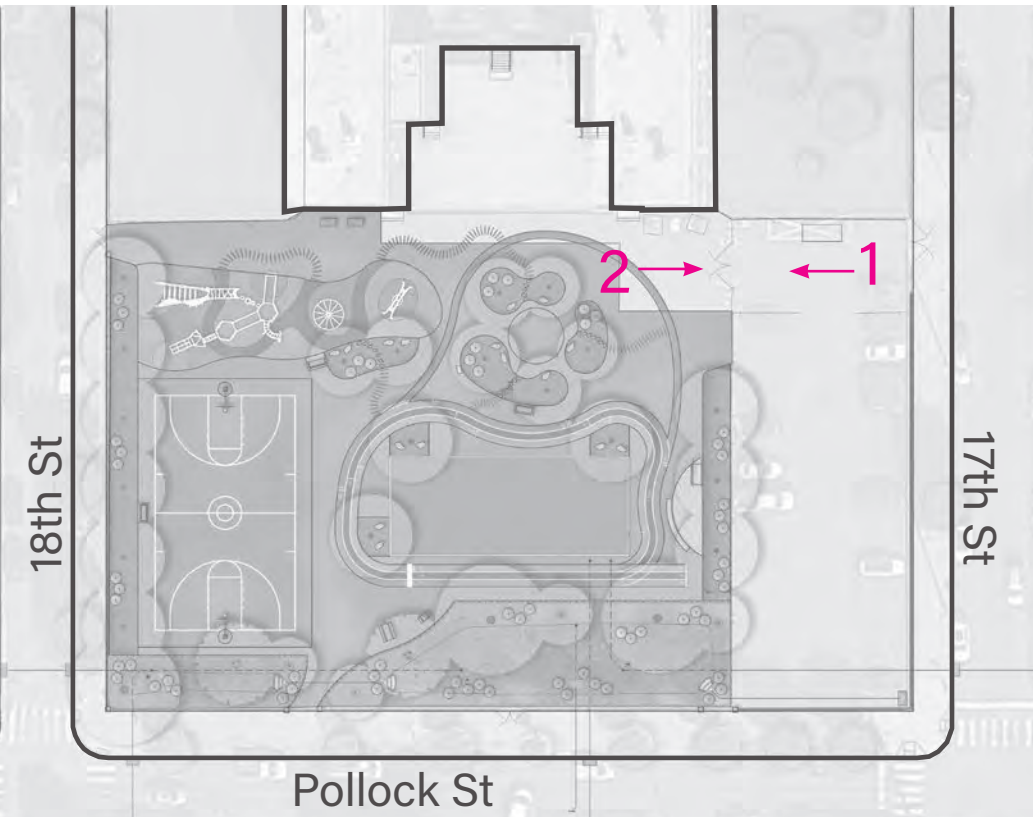
# Existing Conditions



1. View of the school yard from the staff parking lot, looking west toward 18th Street.



2. Vehicular and pedestrian access to the staff parking lot and existing school yard from 17th Street.



Key Map  
N.T.S.



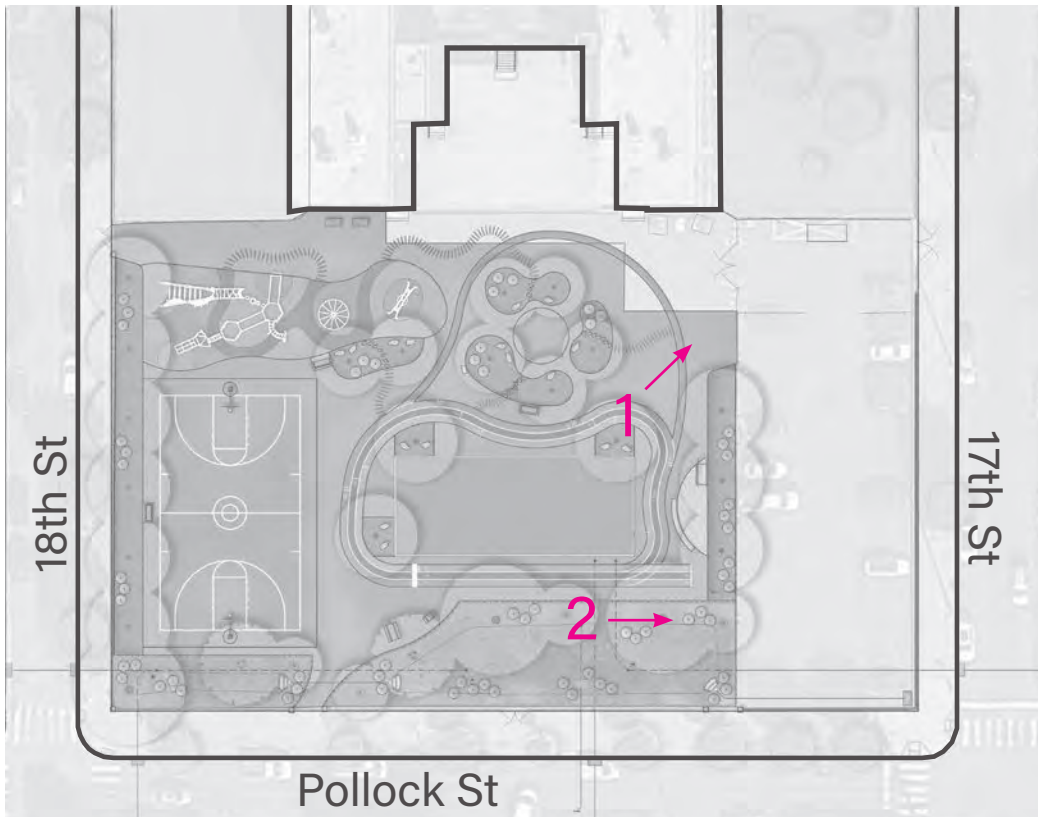
# Existing Conditions



1. Existing pavement painting is currently the only amenity in the school yard.



2. The staff parking lot is separated from the school yard by an existing chainlink fence, looking east toward 17th Street.



Key Map  
N.T.S.

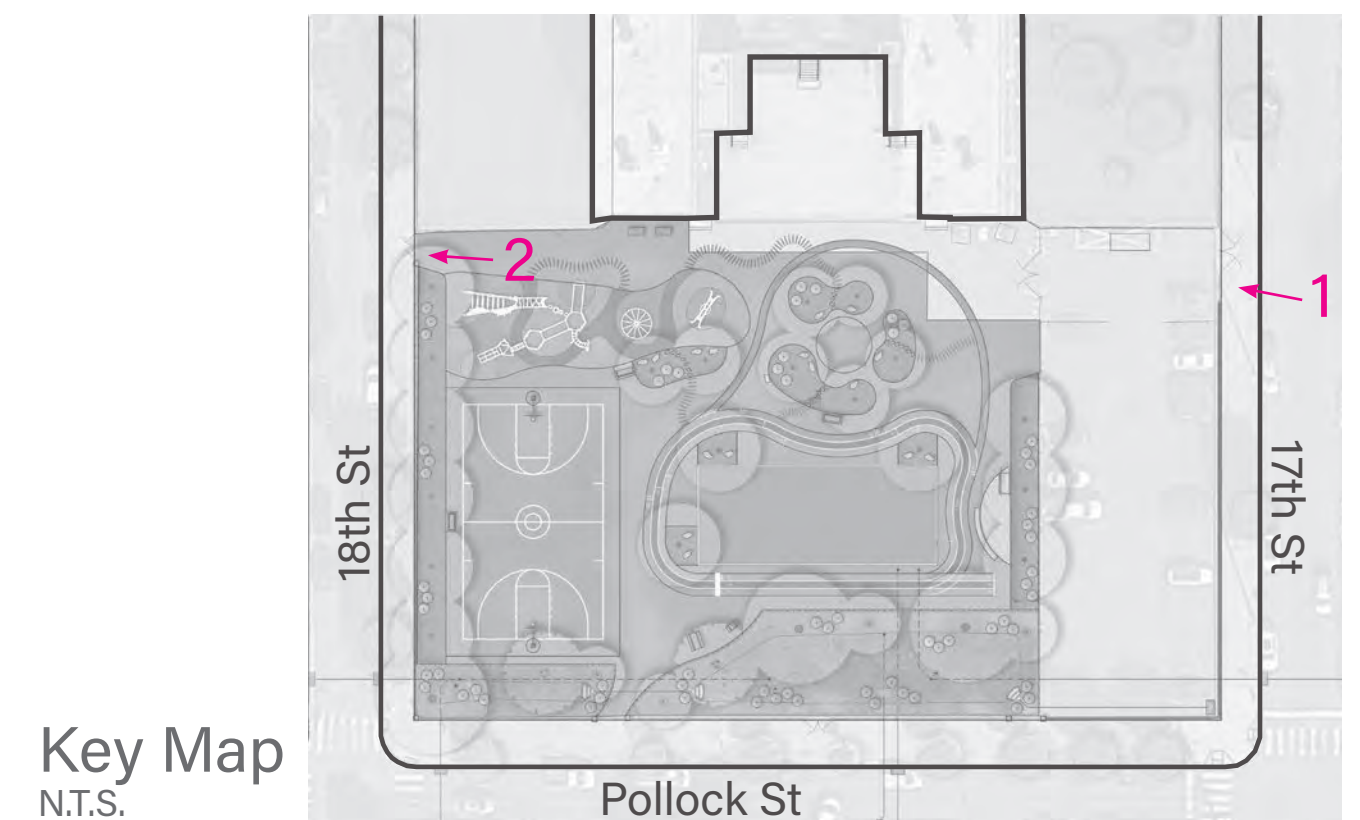




1. Existing site access through gate to staff parking lot on 17th Street.



2. Existing site access through gate on 18th Street.



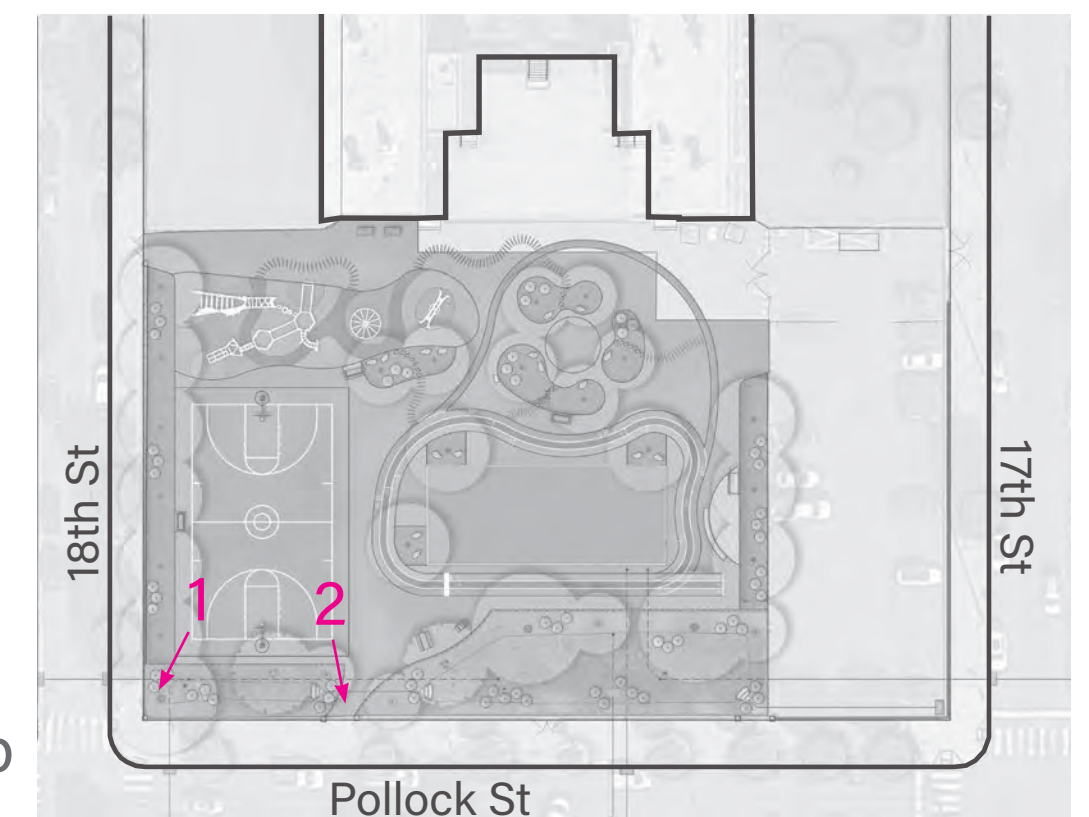




1. Existing perimeter fencing, typical for 18th Street and Pollock Street edges.



2. Proposed gate for community site access between the existing brick pillars on Pollock Street.



Key Map  
N.T.S.



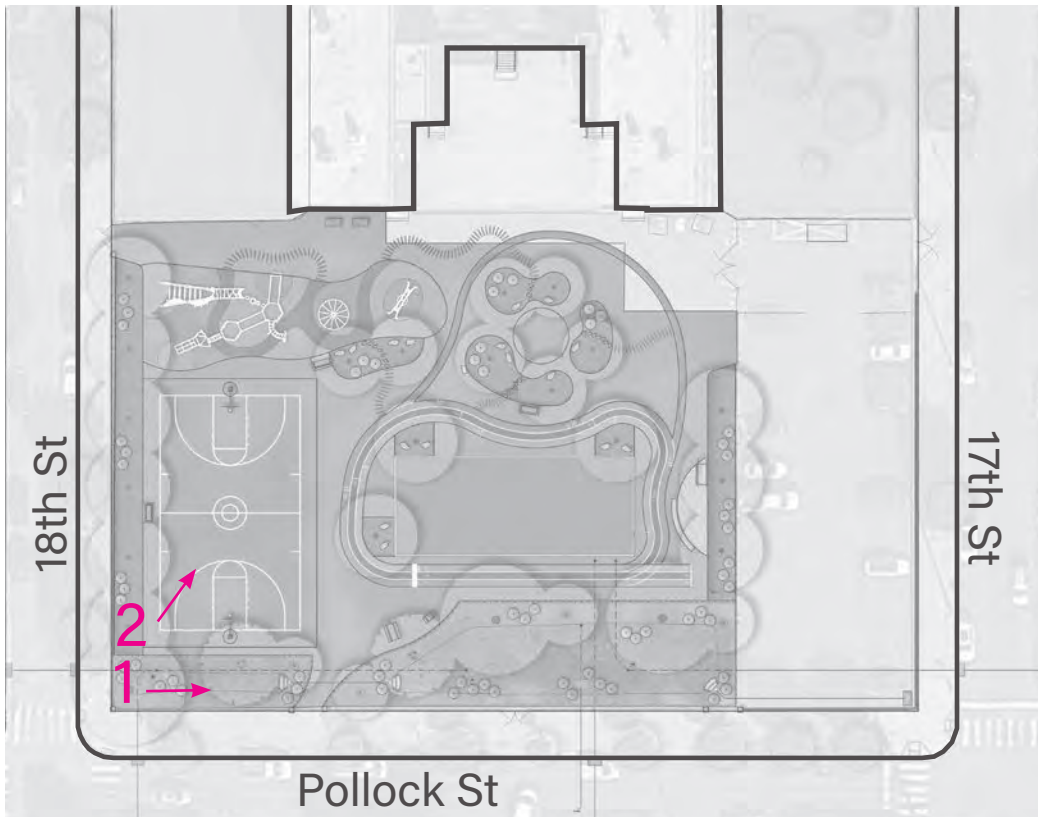
# Existing Conditions



1. The existing site lighting in the schoolyard, looking toward the school.



2. The existing site lighting in the schoolyard, looking toward the school, within the courtyard.

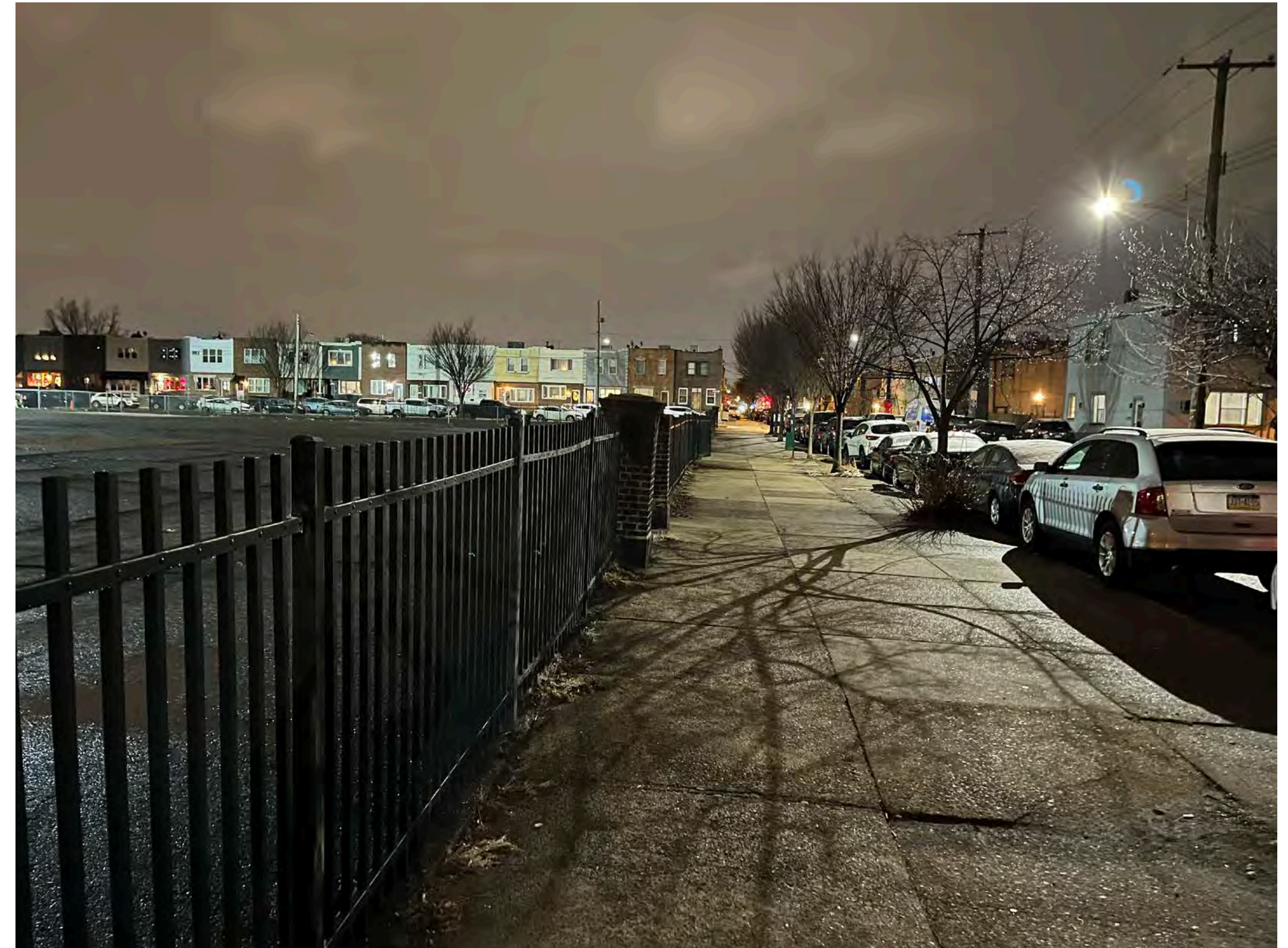


Key Map  
N.T.S.

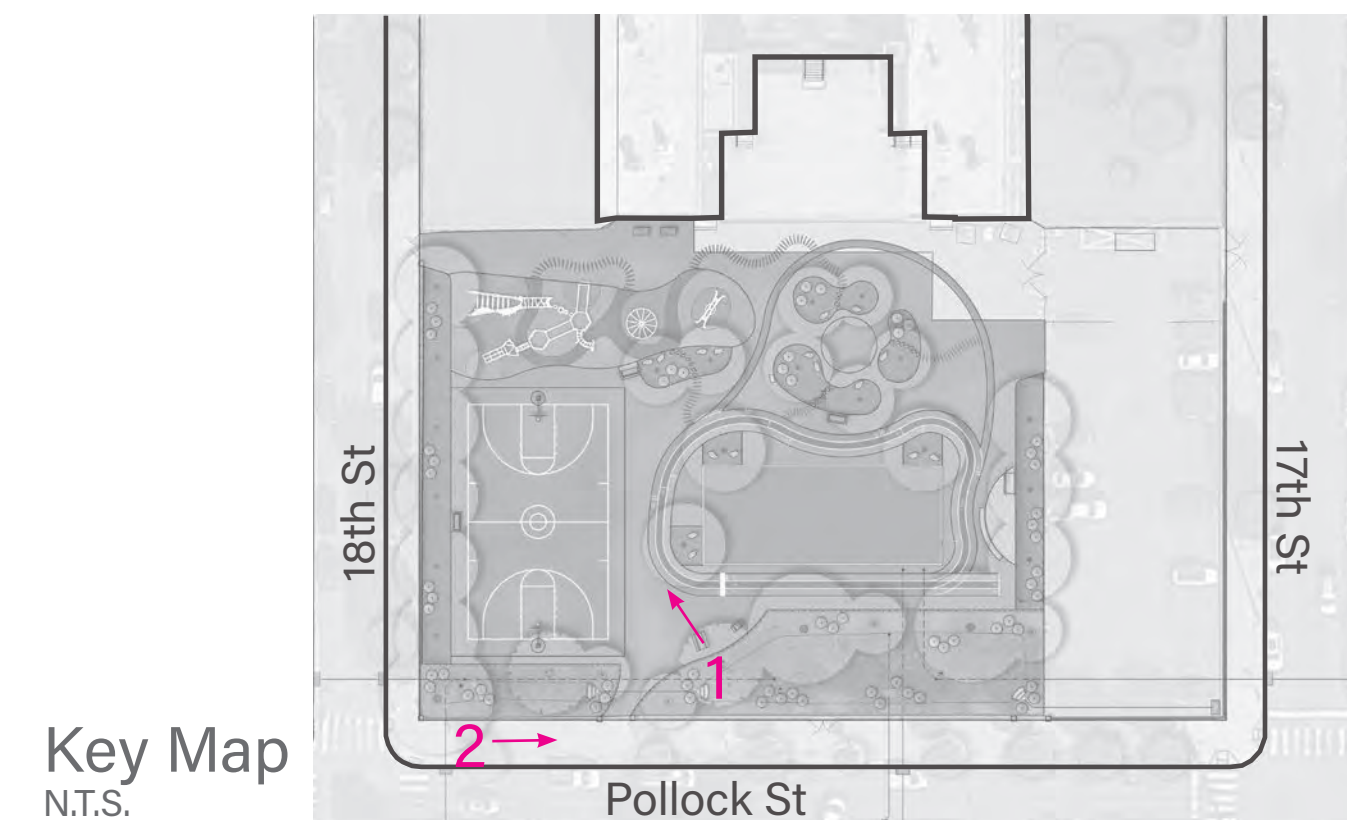




1. The existing site lighting in the schoolyard, looking toward 18th Street.



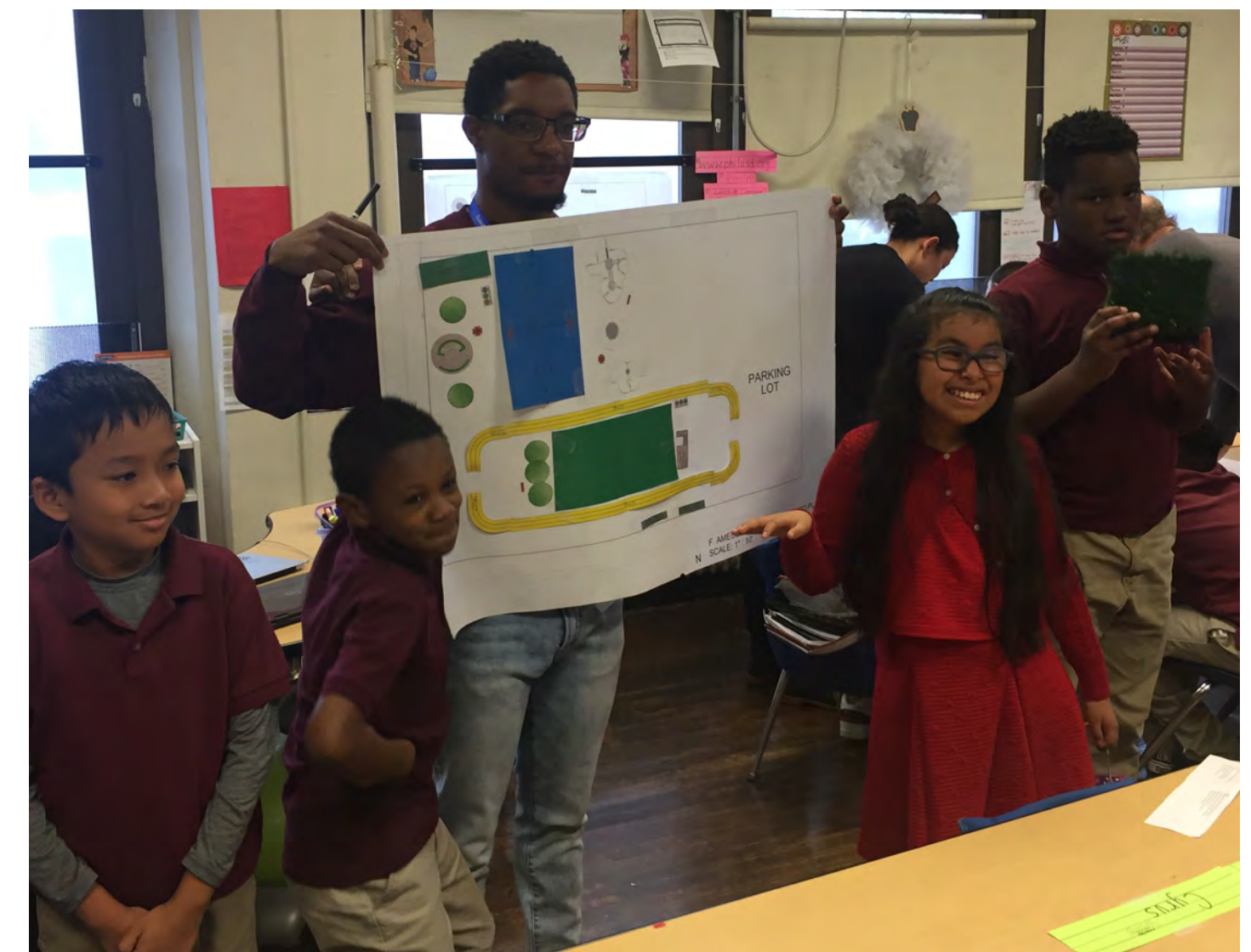
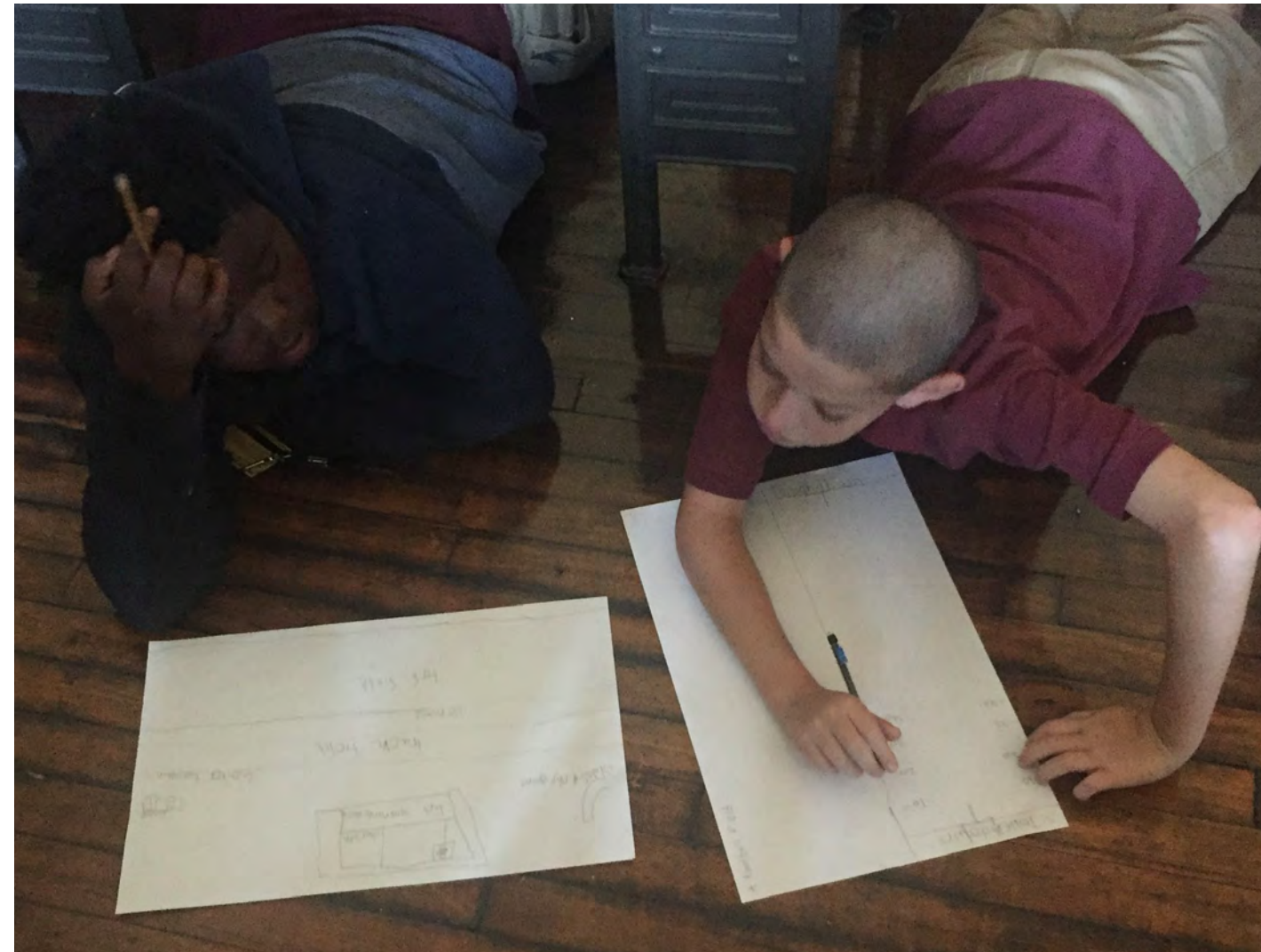
2. The existing site lighting in the schoolyard, along Pollock Street.





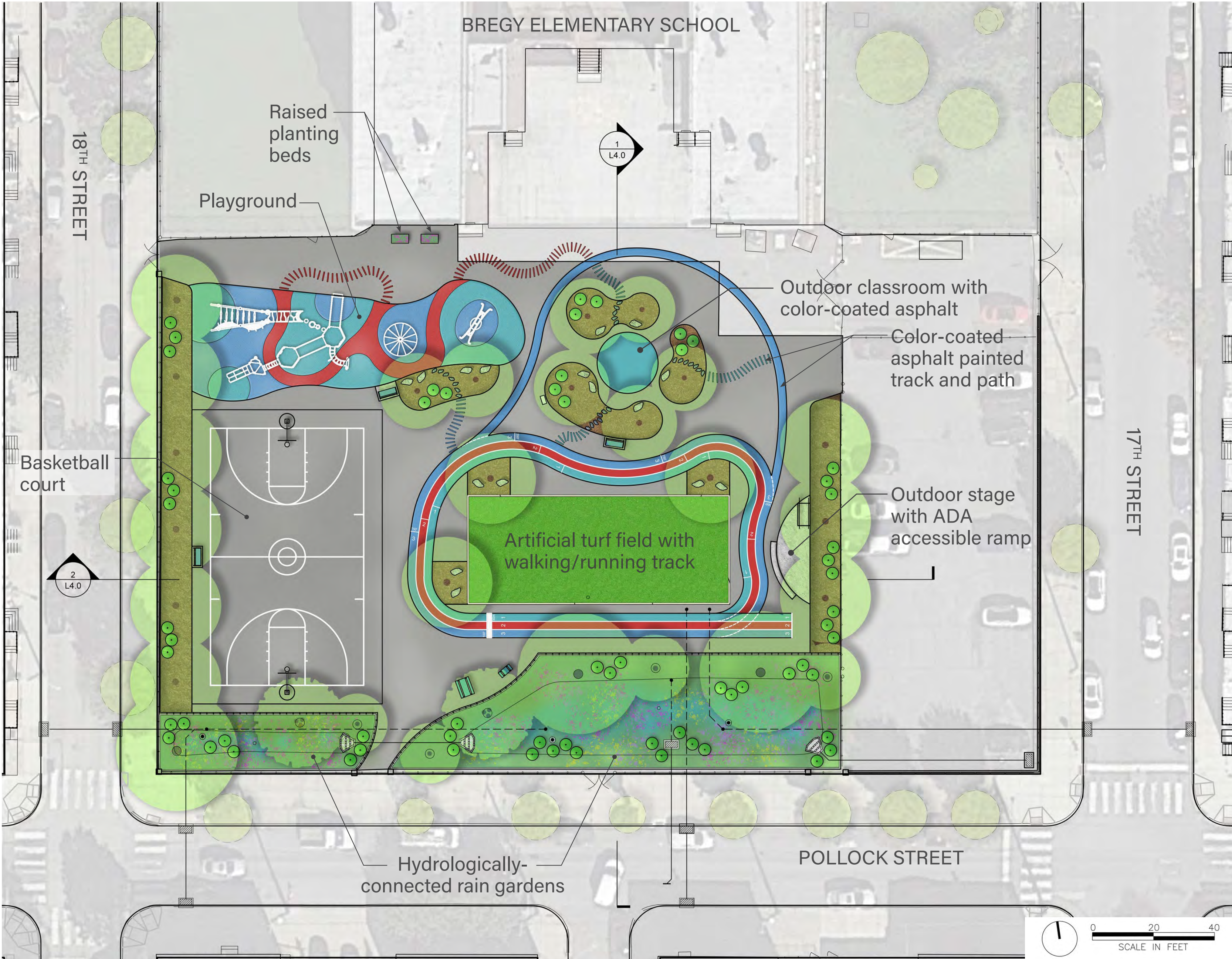
# Participatory Design

The Trust for Public Land held participatory design workshops with Bregy students in Fall 2019 through Winter 2020. The students analyzed existing uses and conditions, learned about possibilities and constraints, and iterated designs. Their final design concept for the schoolyard aims to serve their entire community.



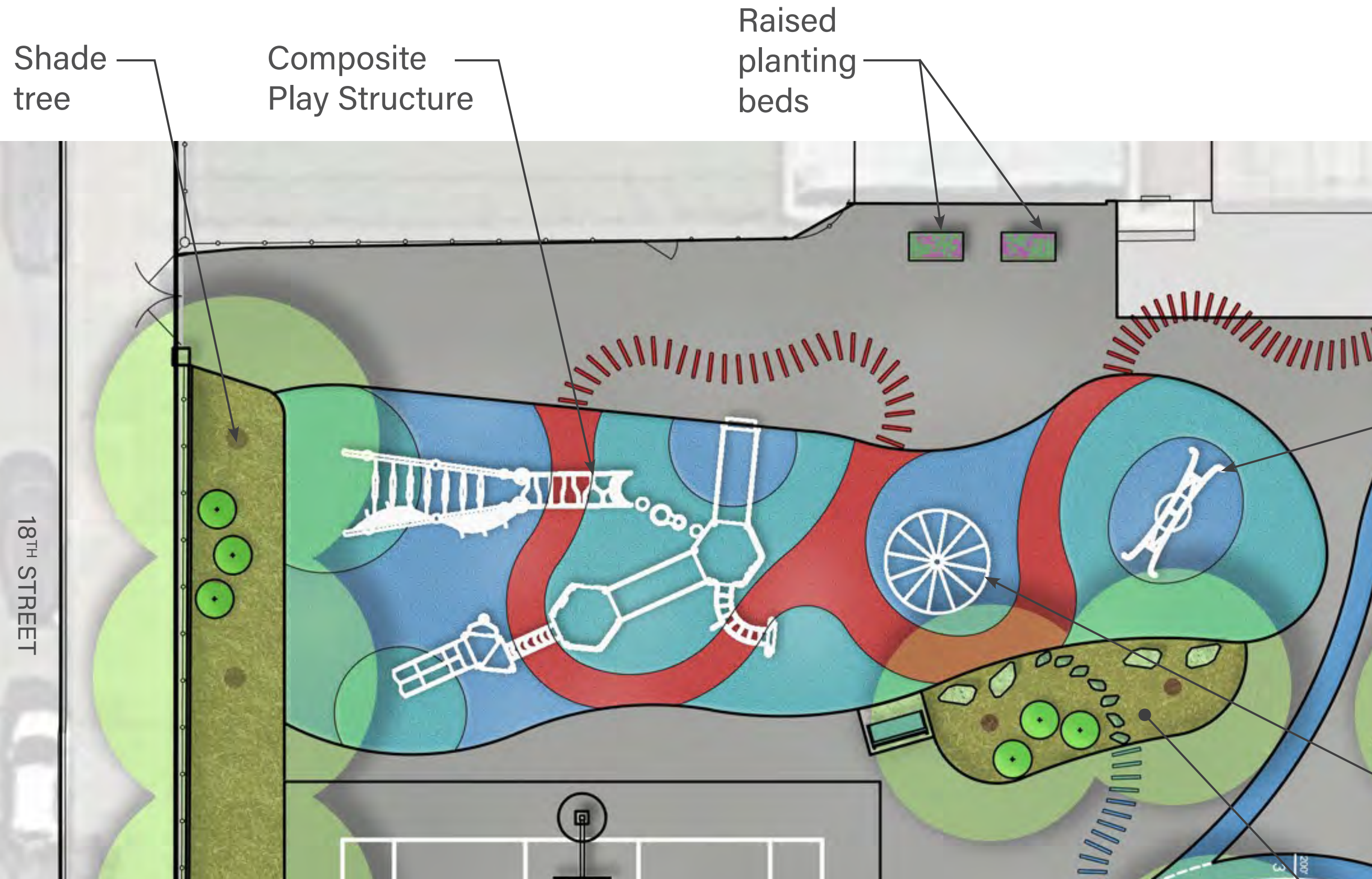


# Proposed Improvements





# Proposed Improvements - Playground

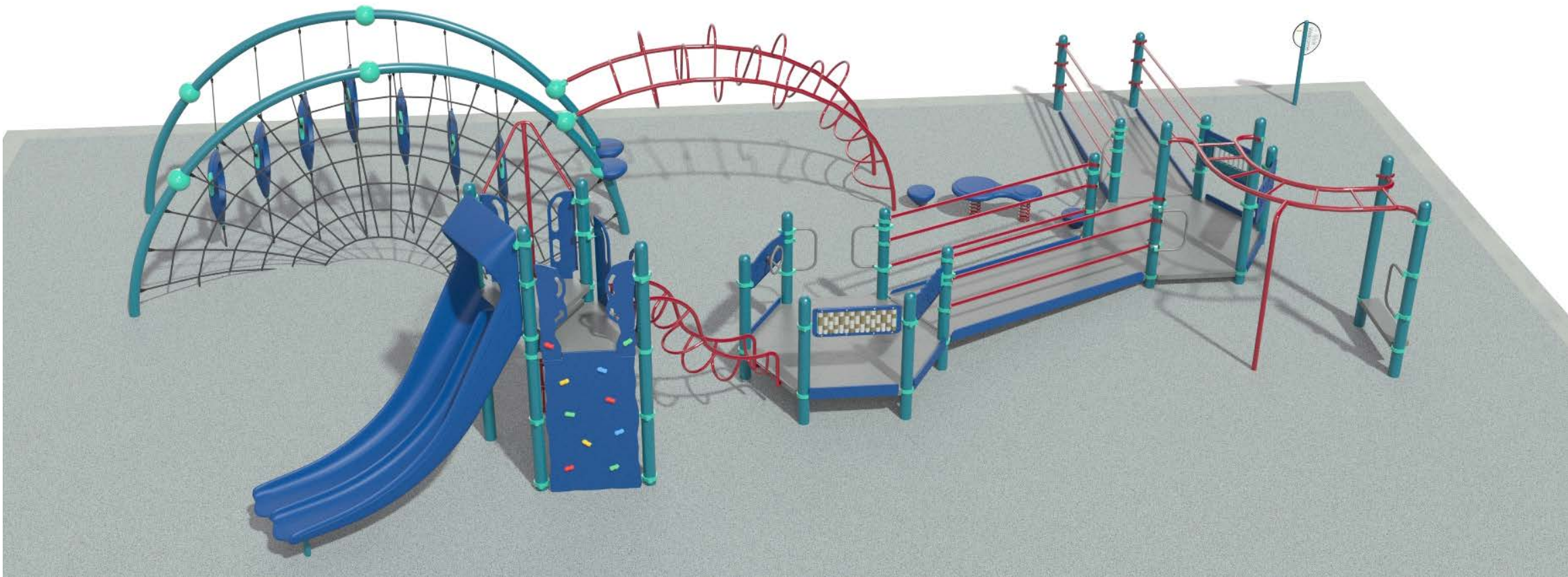


Basket Swing



Spinner

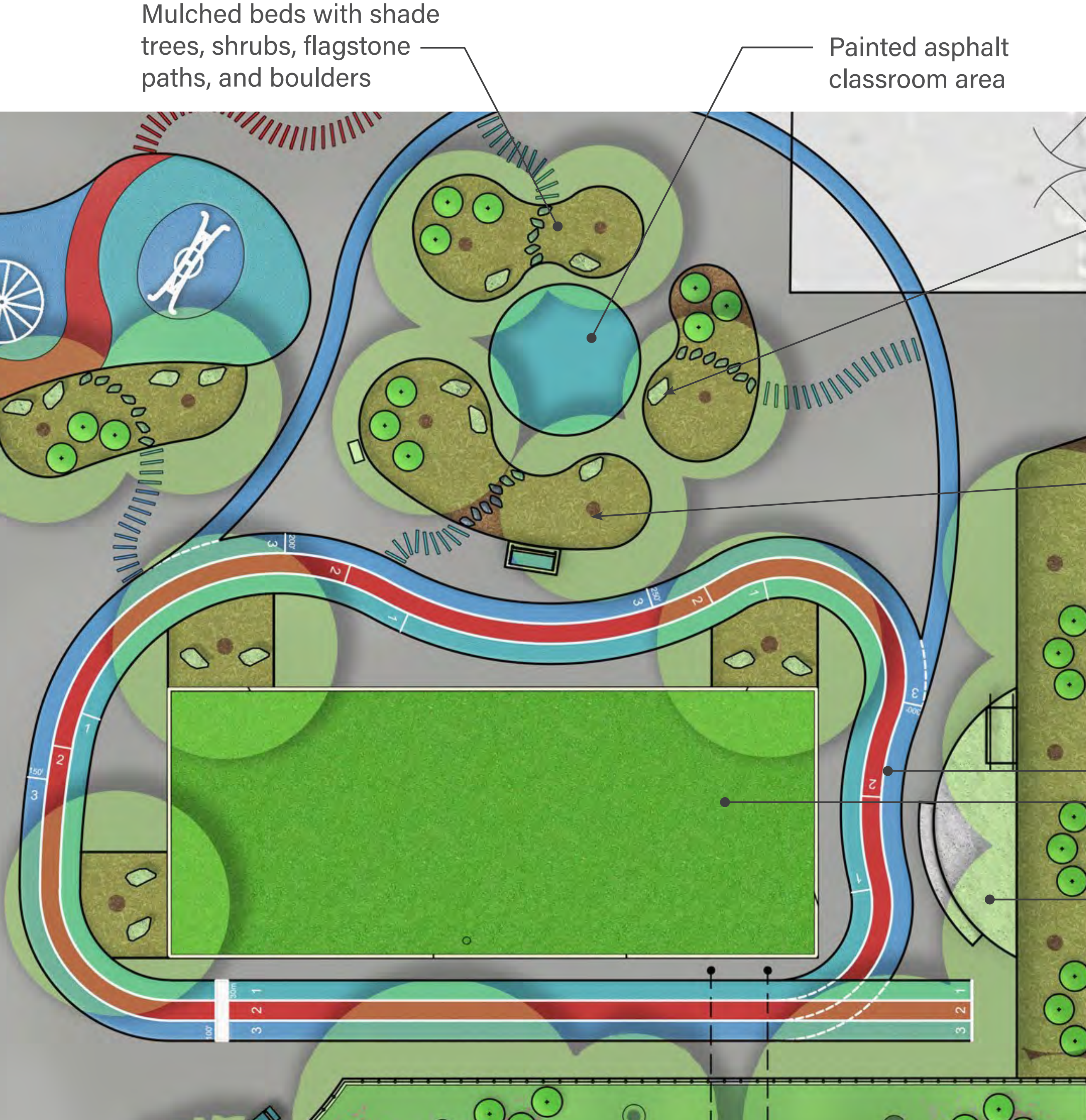
Mulched beds with shrubs, flagstone paths, and boulders



Composite Play Structure



# Proposed Improvements - Outdoor Classroom, Track, Field, and Stage



Boulders



Shade trees



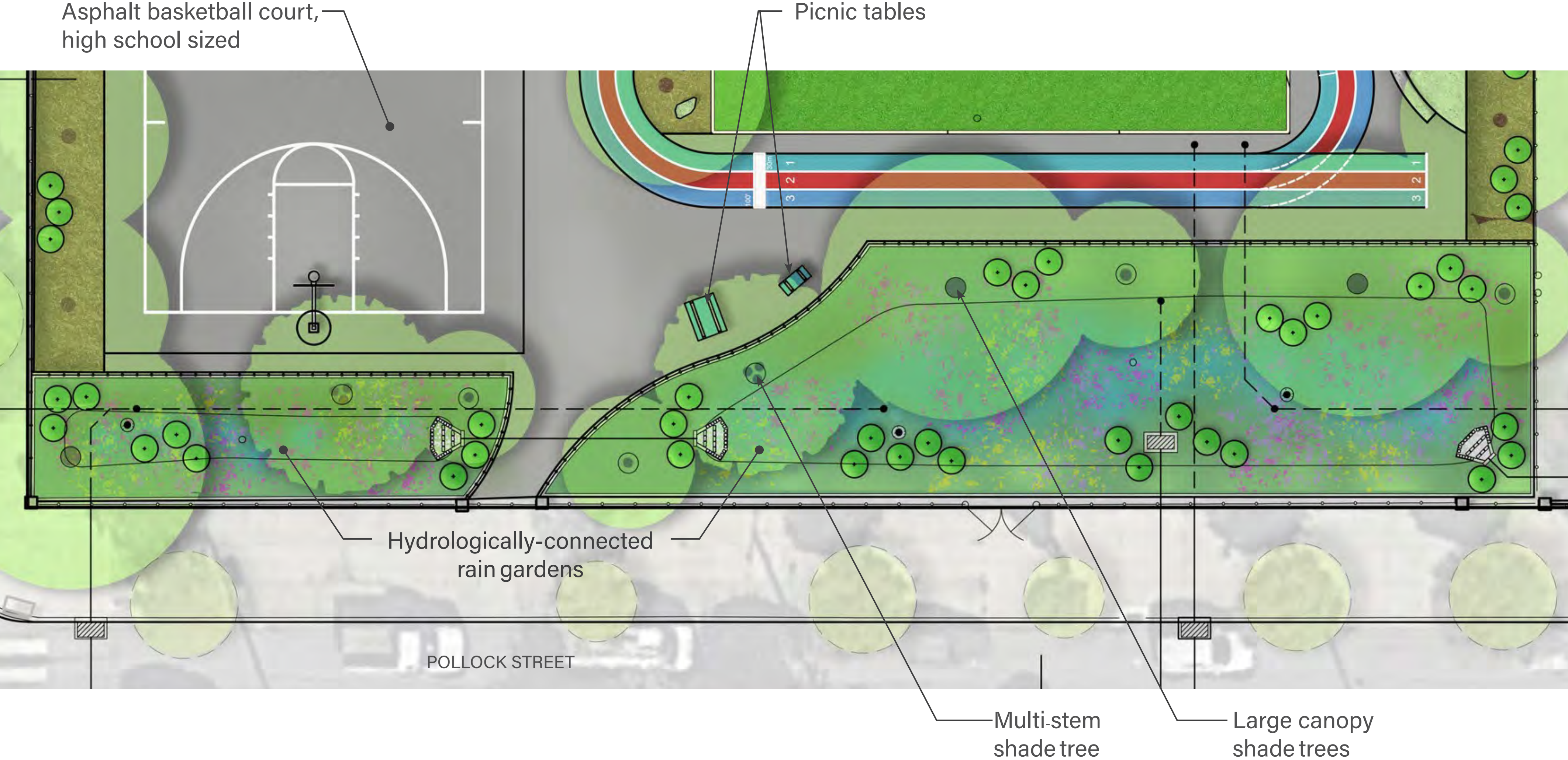
Shrubs

Painted asphalt walking and running track and artificial turf field.

Outdoor ADA-accessible stage for special events. Field can accommodate over 500 folding chairs for special events.



# Proposed Improvements - Rain Gardens and Basketball Court



Matrix-style rain garden planting

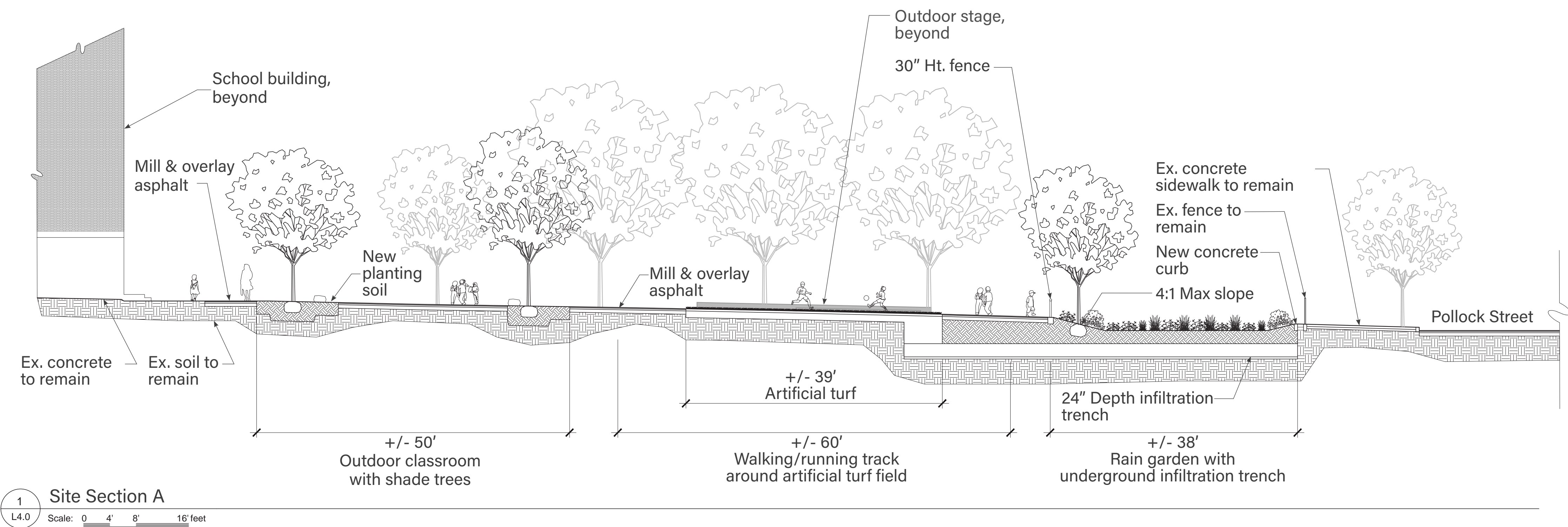


Native tree and shrub plantings with multi-season interest



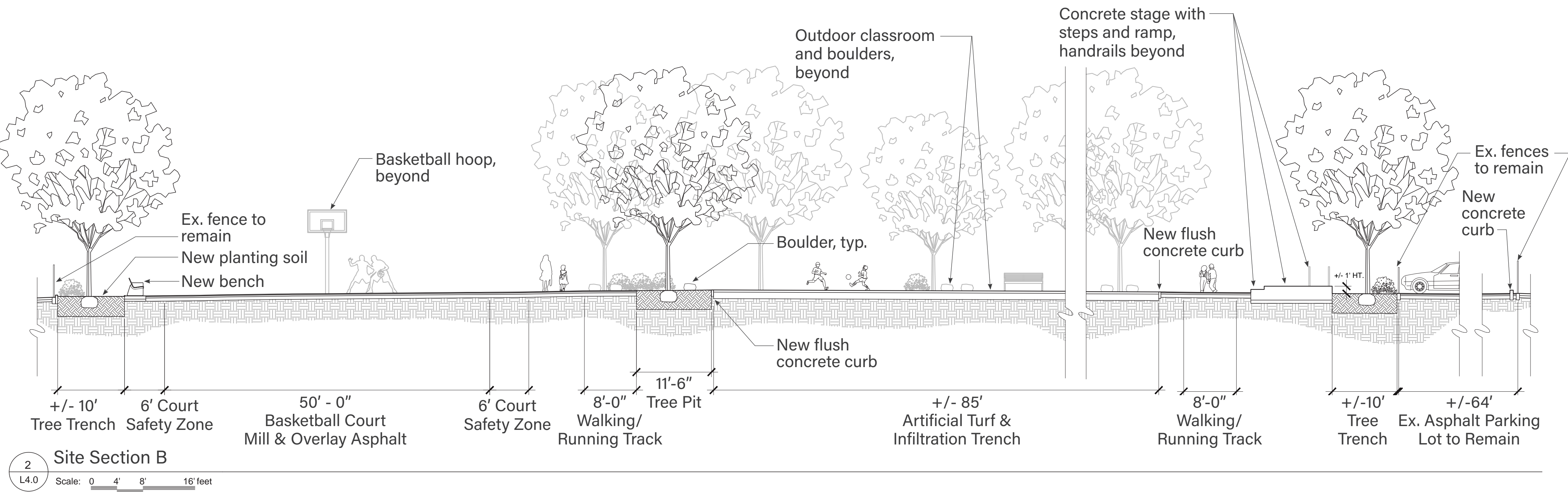


# Site Elevations



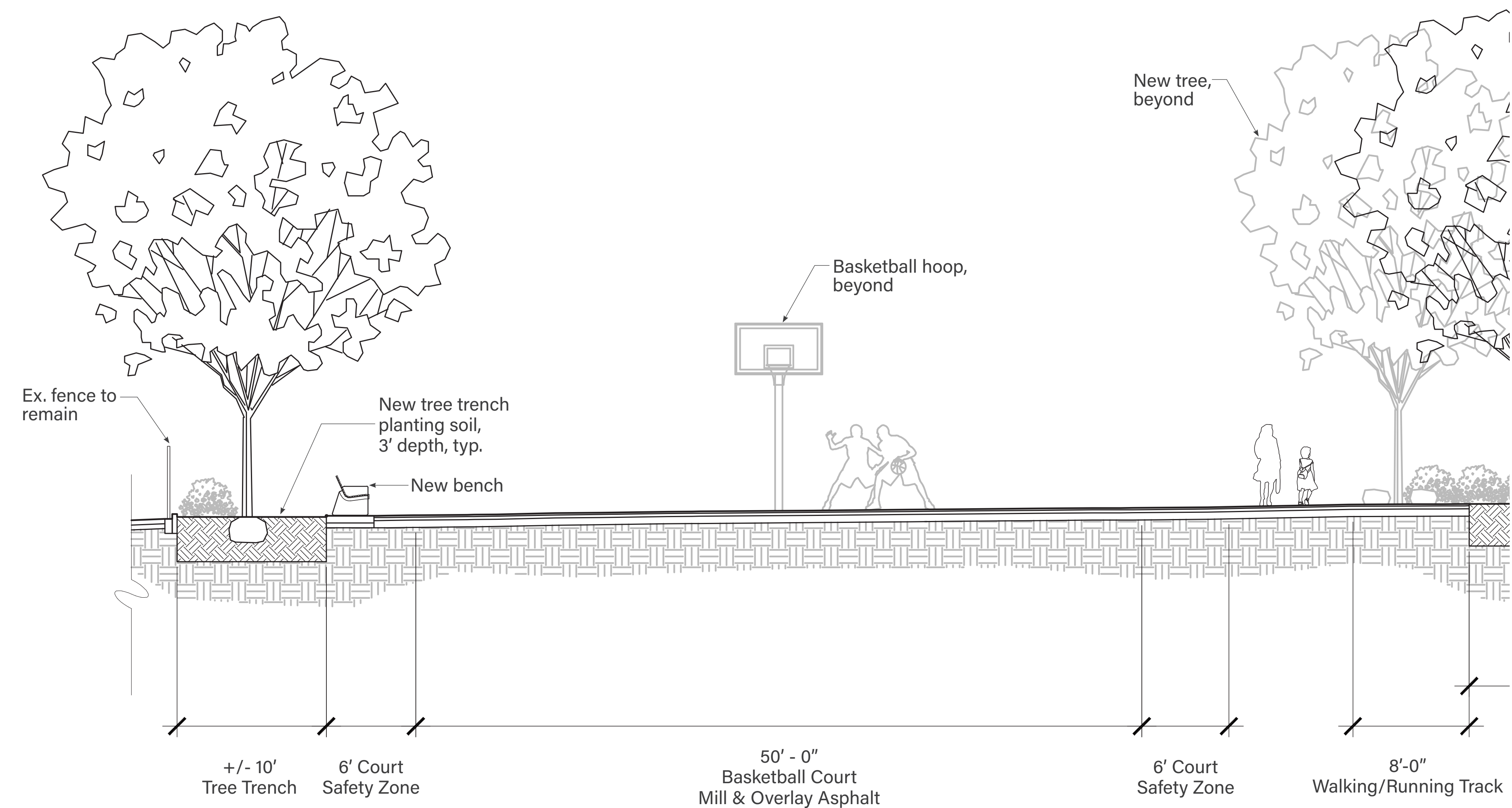


# Site Elevations





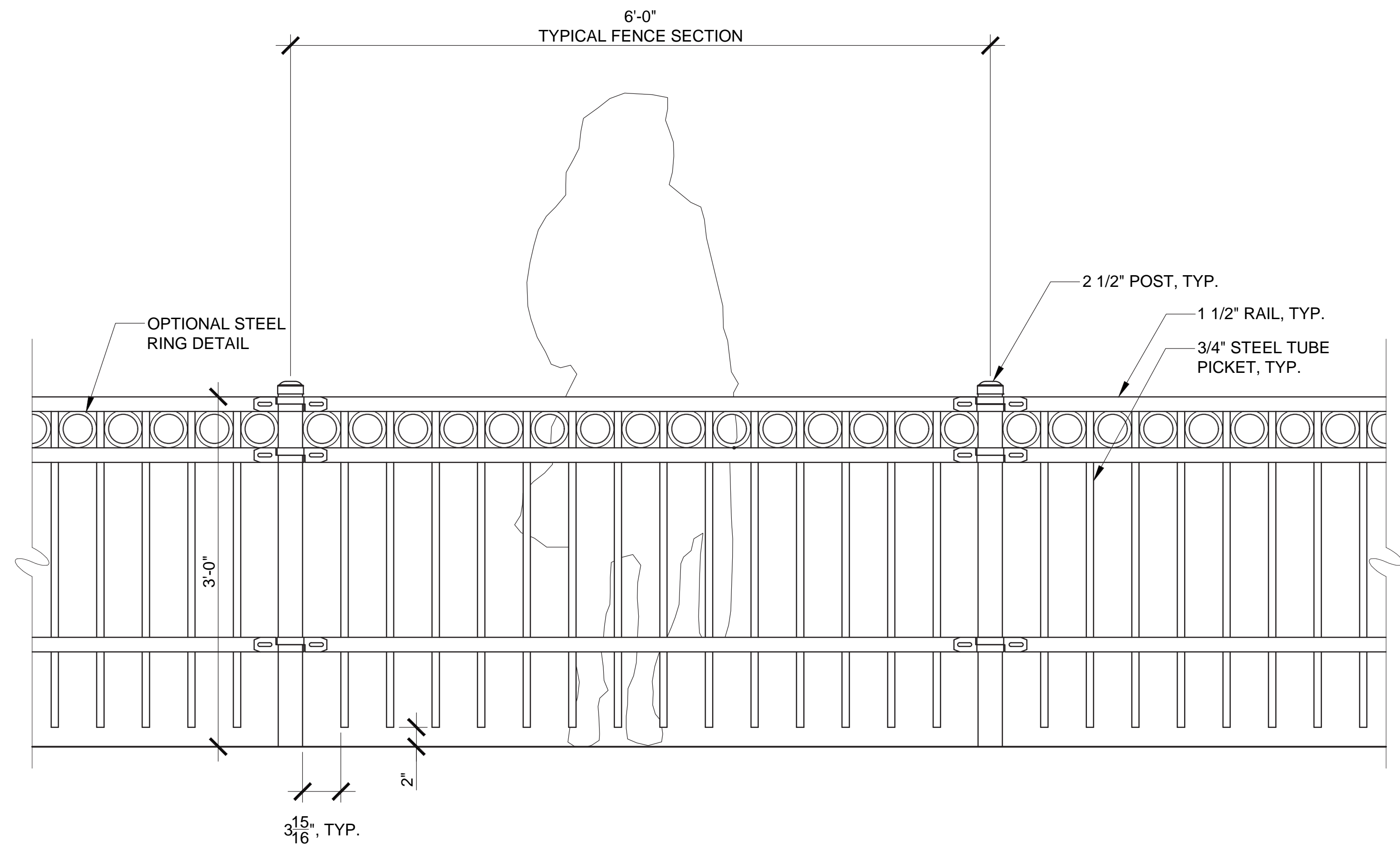
# Site Elevation Enlargement



Site Section B, N.T.S.



# Rain Garden Fence

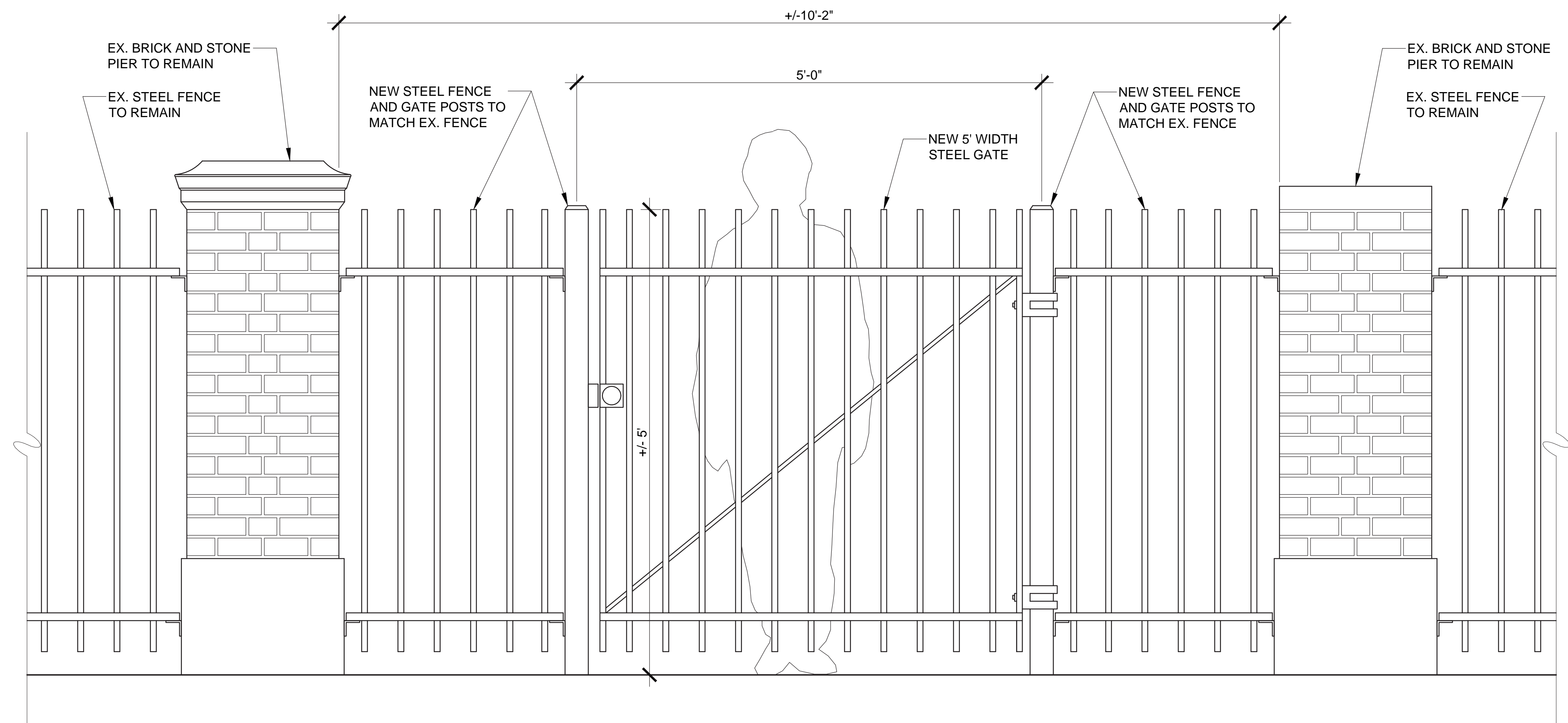


3 Rain Garden Fence  
L4.0

Scale: 0 6" 1' 2' feet



# South Sidewalk Gate Entrance



4  
L4.0

## South Sidewalk Gate Entrance

Scale: 0 6" 1' 2' feet



# Surfacing and Play Equipment

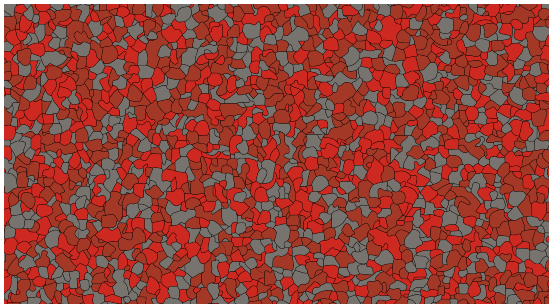
Composite Play Structure



## Safety Surface Colors

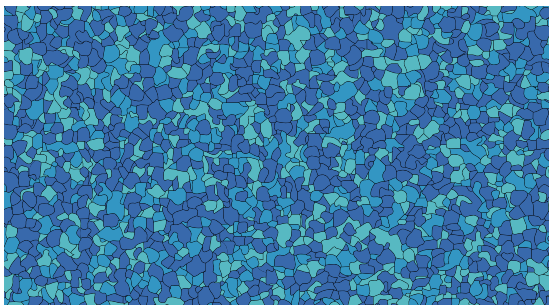
### Path

33% Dark Grey RH60  
33% Standard Red RH01  
33% Bright Red RH02



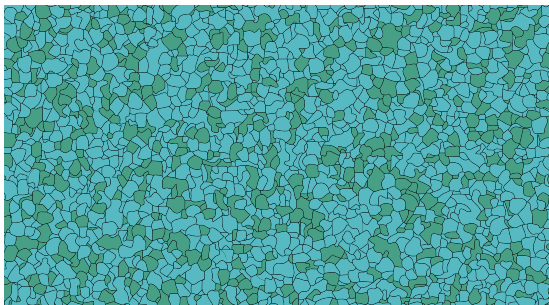
### Blue Base

50% Standard Blue RH20  
25% Azure RH23  
25% Turquoise RH26



### Turquoise Base

67% Turquoise RH26  
33% Dark Green RH12



Spinner



Basket Swing



# Hardscape Materials & Sports Courts



Basketball Backstop



Asphalt and Striping (Patterson)



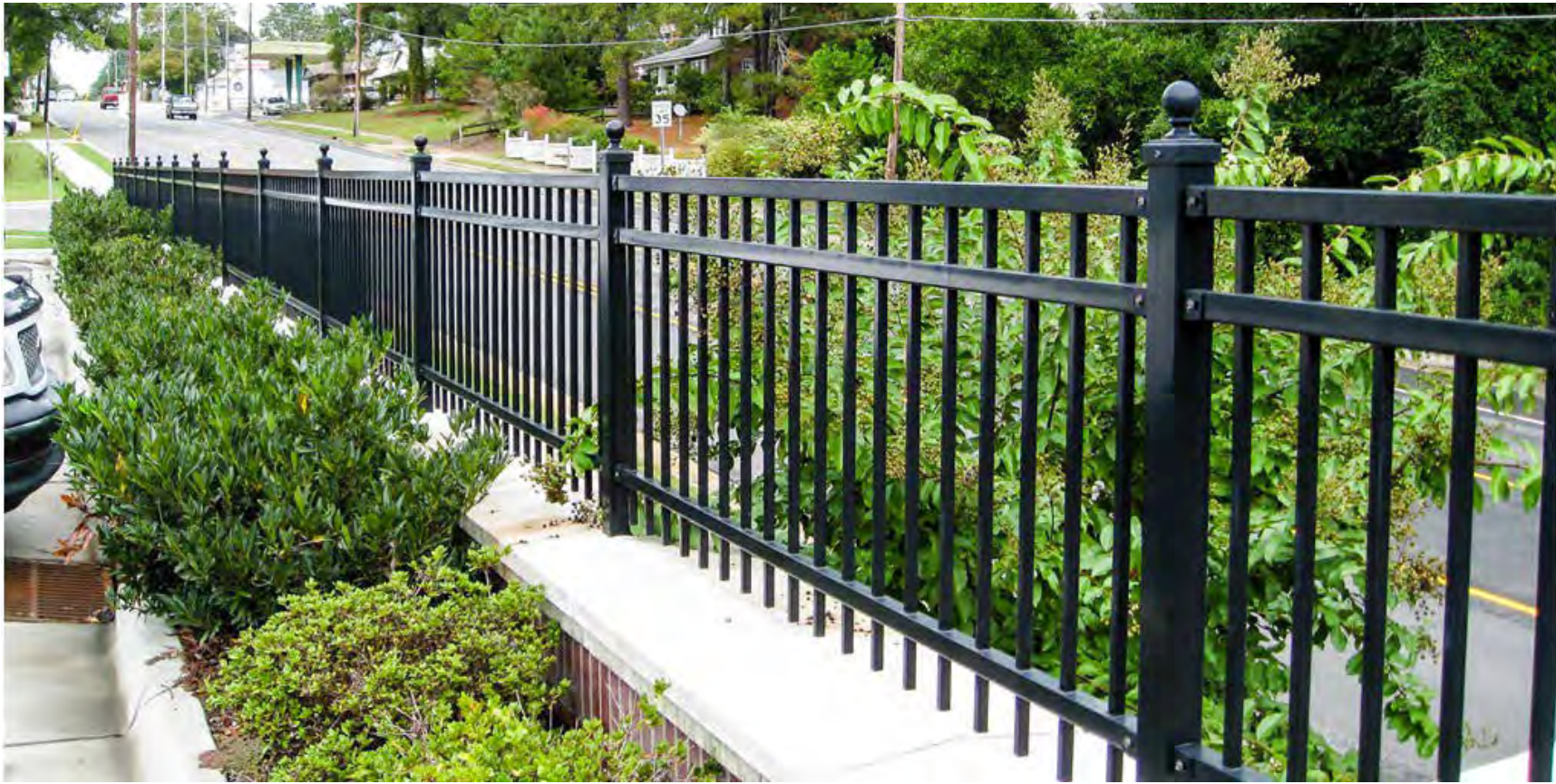
Raised Beds



Boulders (Patterson)



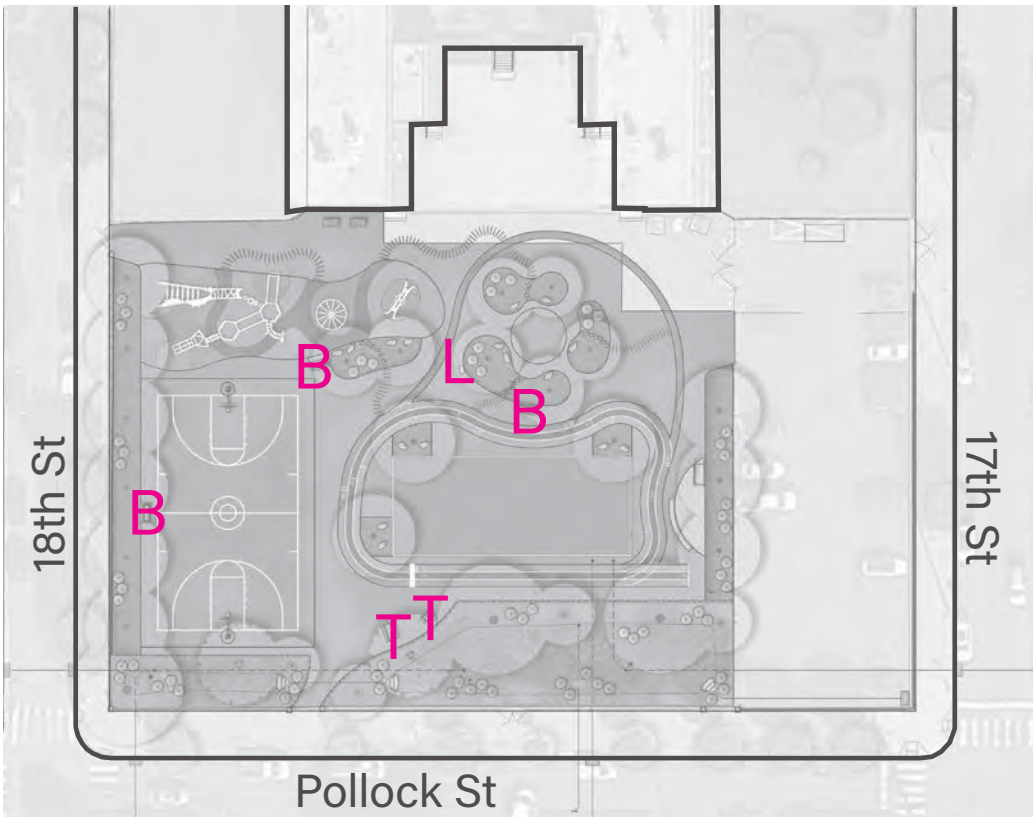
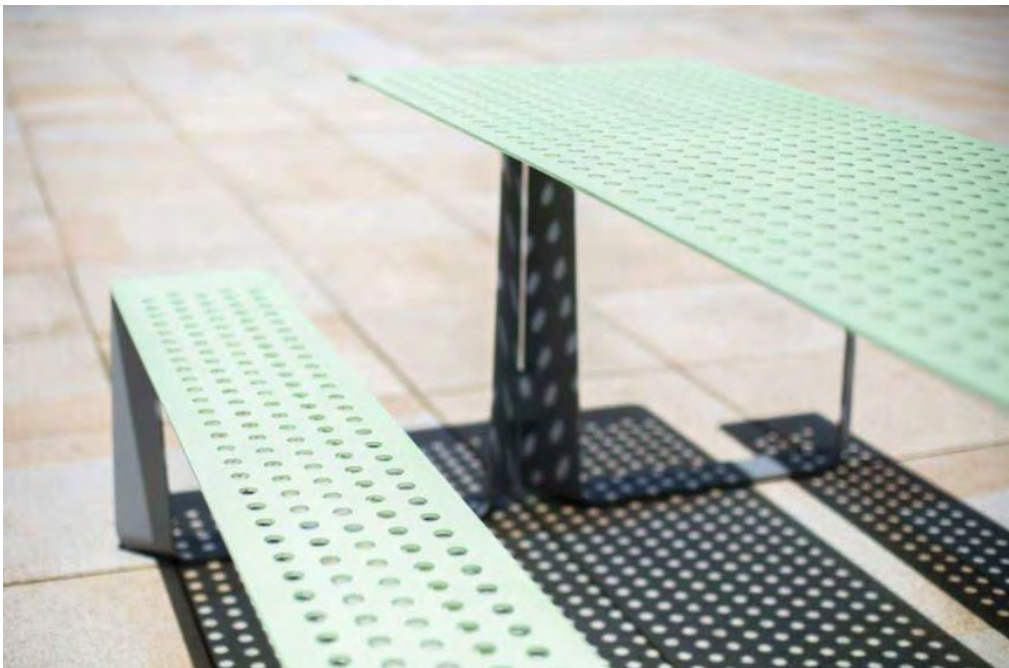
Flagstones



36" Ht. Ornamental Fence



# Site Furnishings



Key Map  
N.T.S.

**T:** Picnic Tables - 2-seater and 4-seater with ADA, Surface Attached Steel Frame  
Perforated Steel Top and Seat Surfaces



Silver

**B:** Backed Benches (Steel) with Armrests, Surface Attached Steel Frame  
Rolled Slats

**L:** Litter/Recycling Bins, Surface Attached Powdercoated - Metallic Silver



# Existing Site Conditions





# Perspective Rendering





# Tree Planting Plan

Tree Planting Species		
Tree	Botanical Name	Common Name
BN	Betula nigra 'Cully'	River Birch
CL	Celtis laevigata 'All Seasons'	Sugarberry
CK	Cladrastis kentukea	Yellowwood
HT	Halesia tetraptera	Carolina Silverbell
LS	Liquidambar styraciflua 'Rotundiloba'	Fruitless Round-lobed Sweetgum
NS	Nyssa sylvatica	Tupelo
OV	Ostrya virginiana	Hophornbeam
PO	Platanus occidentalis	American Sycamore
QA	Quercus alba	White Oak
QL	Quercus lyrata	Overcup Oak
QS	Quercus shumardii	Shumard Oak





# Tree Planting



*Celtis laevigata*  
'All Seasons'  
Sugarberry  
40-60' H/35-55' W  
Drought Tol.: High  
Zone: 5-11



*Platanus occidentalis*  
American Sycamore  
75-100' H/75-90' W  
Drought Tol.: High  
Zone: 4-9



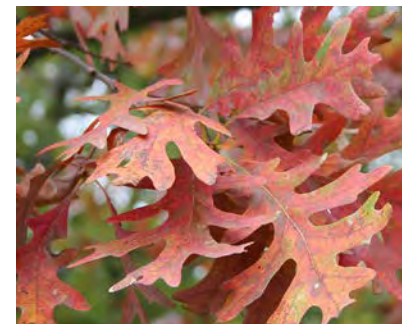
*Betula nigra*  
'Heritage'  
River Birch  
40-70' H/40-60' W  
Drought Tol.:  
Moderate  
Zone: 4-9



*Liquidambar styraciflua*  
'Rotundiloba'  
Round-lobed Sweetgum  
(fruitless cultivar)  
60-70' H/20-30' W  
Drought Tol.: High  
Zone: 4-9



*Nyssa sylvatica*  
Tupelo/Black gum  
30-50' H/20-30' W  
Drought Tol.:  
Moderate  
Zone: 3-9



*Quercus alba*  
White Oak  
50-80' H/50-80' W  
Drought Tol.: High  
Zone: 3-9



*Quercus lyrata*  
Overcup Oak  
40-60' H/40-60' W  
Drought Tol.:  
Moderate  
Zone: 5-9



*Quercus shumardii*  
Shumard Oak  
40-60' H/30-40' W  
Drought Tol.: High  
Zone: 5-9



*Cladrastis kentukea*  
Yellowwood  
30-50' H/40-55' W  
Drought Tol.: High  
Zone: 4-8



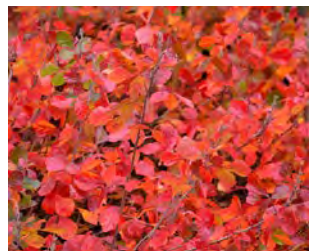
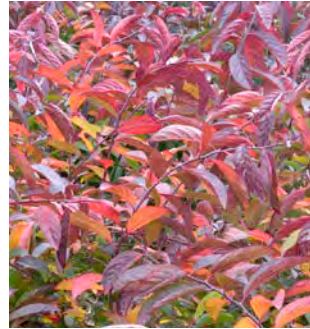
*Halesia tetraptera*  
Carolina Silverbell  
30-40' H/20-35' W  
Drought Tol.:  
Moderate  
Zone: 4-8



*Ostrya virginiana*  
American Hophornbeam  
25-40' H/20-30' W  
Drought Tol.: High  
Zone: 3-9



# Shrub and Rain Garden Planting



Fothergilla gardenii  
Dwarf Fothergilla  
1.5-3' H/2-4' W  
Drought Tol.: Moderate  
Zone: 5-8



Itea virginica 'Merlot'  
Virginia Sweetspire  
3-3.5' H/3-4' W  
Drought Tol.: Moderate  
Zone: 5-9



Ilex verticillata 'Nana'  
(‘Jim Dandy’ pollinator)  
‘Red Sprite’ Winterberry  
2.5-3’ H/2.5-3’ W  
Drought Tol.: Moderate  
Zone: 3-9



Cornus sericea 'Farrow'  
‘Arctic Fire’ Dogwood  
3-3.5’ H/3-4’ W  
Drought Tol.: Moderate  
Zone: 3-7



Rhus aromatica  
'Gro-low'  
Gro-low Sumac  
1.5-2' H/6-8' W  
Drought Tol.: High  
Zone: 3-9

## MATRIX-STYLE RAIN GARDEN PLANTING



- 1 *Schizachyrium scoparium* ‘Standing Ovation’  
Little bluestem  
36-48” H/12-18” W
- 2 *Sporobolus heterolepis* ‘Tara’  
Prairie dropseed  
12-24” H/12-24” W
- 3 *Liatris scariosa*  
Savana Blazing Star  
24-48” H/12-24” W  
Bloom: reddish-purple (Aug-Oct)
- 4 *Conoclinium coelestinum*  
Blue Mistflower  
18-36’ H/18-36’ W  
Bloom: blue (July-Oct)
- 5 *Solidago nemoralis*  
Gray Goldenrod  
6”-24” H/6-24” W  
Bloom: yellow (Aug-Sept)
- 6 *Asclepias tuberosa*  
Butterfly Milkweed  
12-30” H/12-18” W  
Bloom: orange (Apr-June)





# F. Amedee Bregy School

