

THE WINDSOR SUITES

1700 BENJAMIN FRANKLIN PARKWAY
PHILADELPHIA, PENNSYLVANIA

ISSUE FOR PERMITS - OCTOBER 15, 2012

Carl Walker

6 North Broad Street
Suite 320
Woodbury, NJ 08096-4635
Phone (856) 579-1511
Fax (856) 251-1070
www.carlwalker.com

CONSULTANTS:

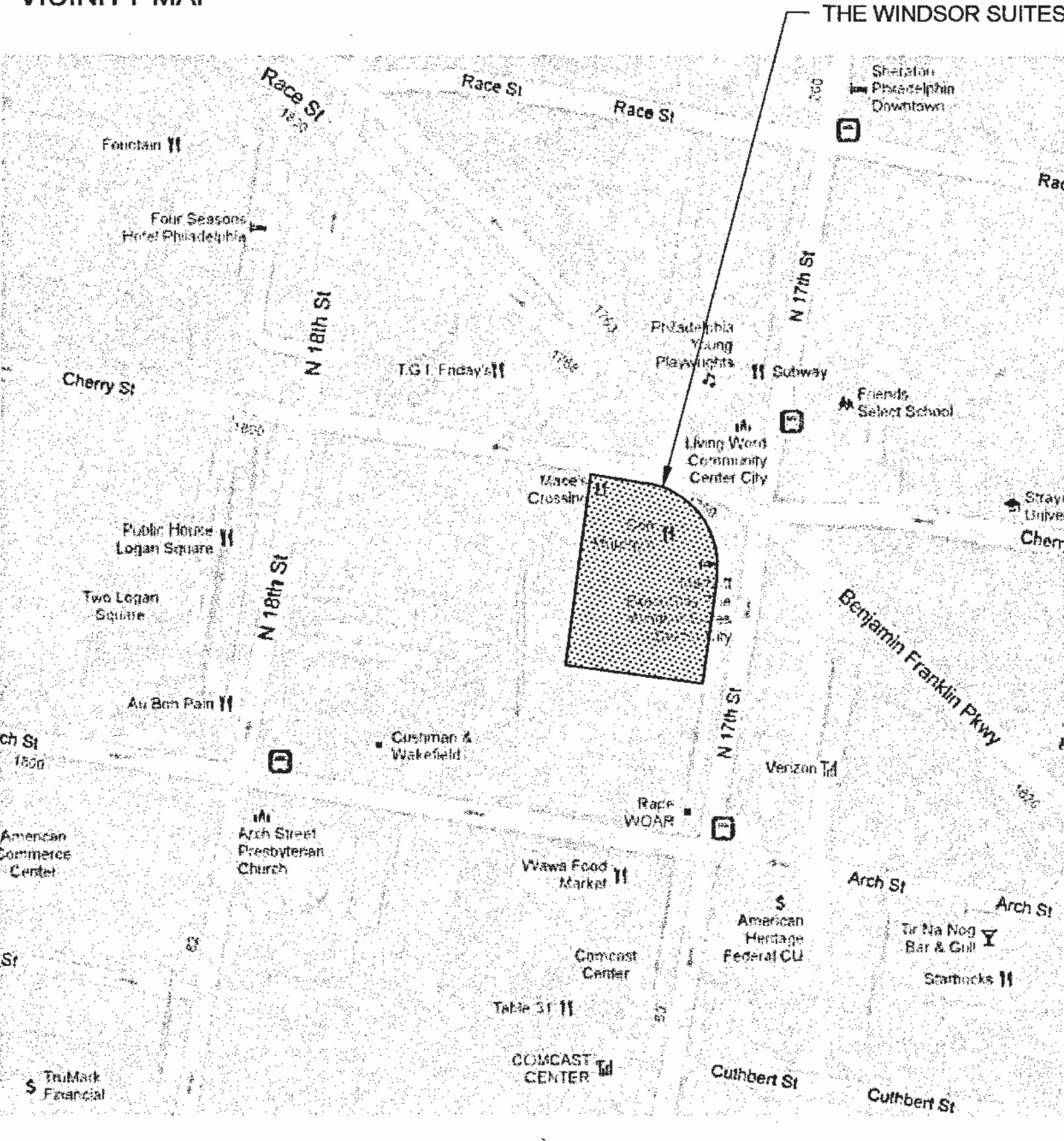
The Windsor Suites

1700 Benjamin Franklin Parkway
Philadelphia, PA

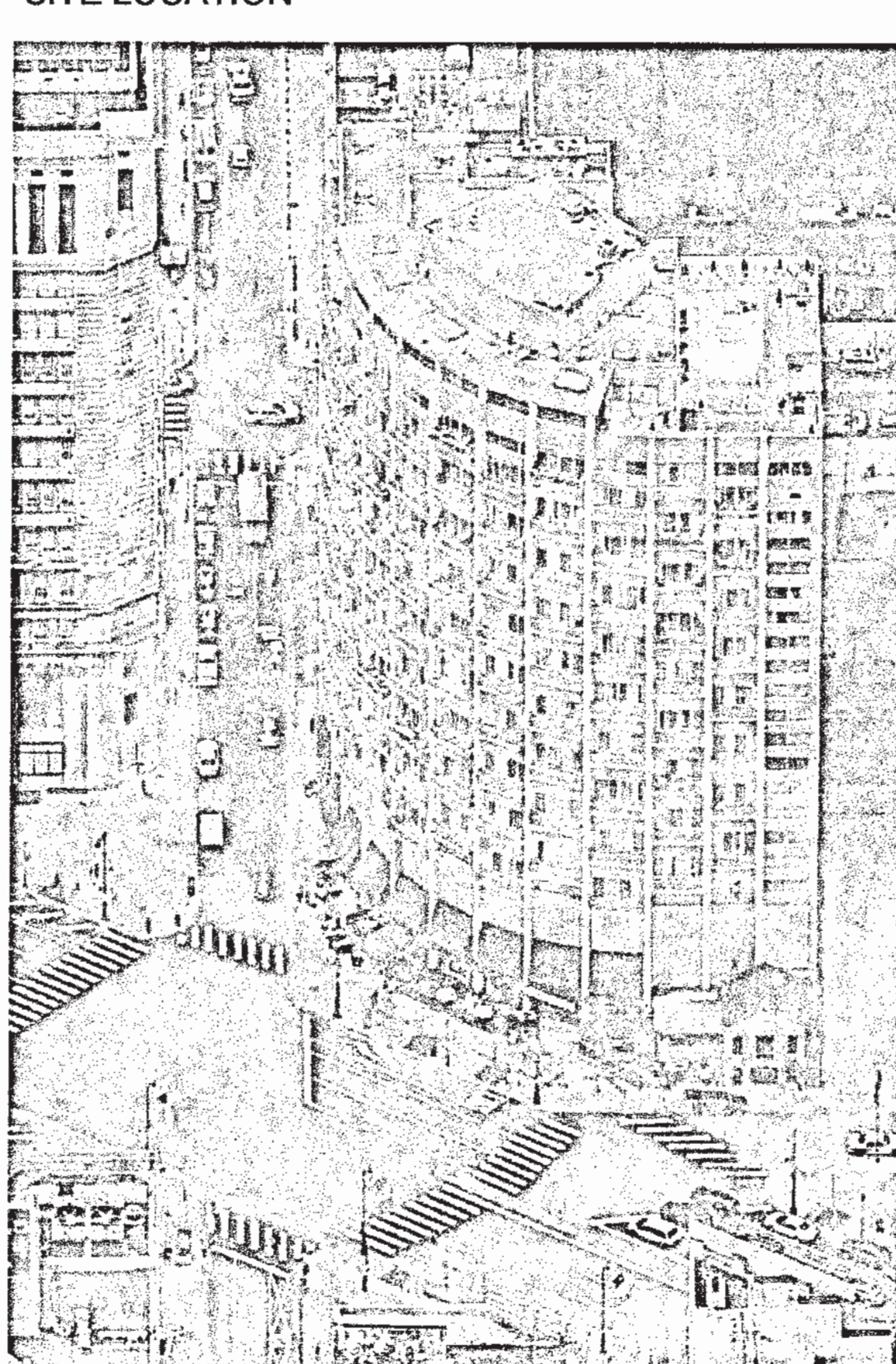
SHEET INDEX

GENERAL	G001	COVER SHEET AND DRAWING INDEX
STRUCTURAL	SR101	CANOPY DRAWING AND DETAILS
PLUMBING	PR101	CANOPY PLUMBING PLAN
ELECTRICAL	ER101	CANOPY ELECTRICAL PLAN

VICINITY MAP



SITE LOCATION



GENERAL NOTES

DIVISION 1 GENERAL

- ALL DESIGN SHALL BE IN ACCORDANCE WITH THE FOLLOWING:
 - CITY OF PHILADELPHIA CODES AND ORDINANCES, MOST RECENT.
 - INTERNATIONAL BUILDING CODE (IBC), 2009.
 - FOR ADDITIONAL INFORMATION ON EXISTING STRUCTURE, REFER TO ORIGINAL DESIGN DRAWINGS BY AARON COLISH, ARCHITECT AND DORFMAN - BLOOM, INC, STRUCTURAL ENGINEER DATED APRIL 1 1963.

DIVISION 3 CONCRETE

- GROUT:** PREMIXED, PACKAGED, NON-SHRINK, CHLORIDE-FREE, NON STAINING, F'C = 6000 PSI MINIMUM, ASTM C 1107.

DIVISION 5 METALS

STRUCTURAL STEEL

- DESIGN AND CONSTRUCTION STANDARD - AMERICAN INSTITUTE OF STEEL CONSTRUCTION, MANUAL OF STEEL CONSTRUCTION - ALLOWABLE STRESS DESIGN 9TH EDITION.
- W - SHAPES: ASTM A 582, GRADE 50.
- CHANNELS, ANGLES, M, S - SHAPES: ASTM A 36.
- PLATES AND BARS: ASTM A 36.
- ALL WELDING SHALL BE MADE WITH E70XX LOW HYDROGEN ELECTRODES AND SHALL CONFORM TO LATEST EDITION OF AMERICAN WELDING SOCIETY SPECIFICATIONS. ALL WELDS SHALL BE PERFORMED BY AN AWS CERTIFIED WELDER.
- BOLTED CONNECTIONS SHALL BE MADE USING ASTM A 325X 3/4" DIAMETER HIGH STRENGTH BOLTS, NUTS AND WASHERS BEARING TYPE CONNECTION WITH THREADS EXCLUDED IN SHEAR PLANE, TURN OF THE NUT METHOD.
- FINISH: PRIME PAINTED WITH TWO COATS OF VPOC RUST CONVERTER AND PRIMER.
- USE STANDARD AISC DOUBLE ANGLE CONNECTIONS WHERE POSSIBLE. SHOP CONNECTIONS NOT SPECIFICALLY DETAILED ON DRAWINGS SHALL BE BOLTED OR WELDED. MINIMUM ROWS OF BOLTS TO BE PROVIDED PER BEAM DEPTH - WELDED CONNECTIONS TO BE OF EQUIVALENT CAPACITY.
 - MINIMUM ROWS OF BOLTS IN BEAM CONNECTION
 - W5 - 1 ROW
 - W8, W10 - 2 ROWS
 - W12, W14 - 3 ROWS
 - W16 - 4 ROWS
 - W21 - 5 ROWS
- CONNECTIONS NOT DETAILED ON DRAWINGS SHALL BE DESIGNED BY FABRICATOR IN ACCORDANCE WITH AISC SPECIFICATIONS - ALLOWABLE STRESS DESIGN 9TH EDITION. WHEN NO REACTIONS ARE INDICATED, DESIGN CONNECTIONS TO SUPPORT A REACTION VALUE EQUAL TO ONE HALF THE AISC TABULATED ALLOWABLE UNIFORM LOAD VALUE (6 KIPS MINIMUM).

METAL DECK

- ALL METAL ROOF DECK SHALL BE MANUFACTURED AND INSTALLED IN ACCORDANCE WITH RECOMMENDATIONS AND SPECIFICATIONS OF STEEL DECK INSTITUTE.
- ROOF DECK MAXIMUM DEFLECTION OF 1/240 OF CENTER-TO-CENTER SPAN UNDER UNIFORMLY DISTRIBUTED LIVE LOAD INDICATED ON DRAWINGS OR 200 LBS CONCENTRATED LOAD AT MID-SPAN ON A 1'-0" WIDE SECTION.
- DECK SECTION PROPERTIES SHALL BE IN ACCORDANCE WITH AISI, "SPECIFICATION FOR THE DESIGN OF COLD-FORMED STEEL STRUCTURAL MEMBERS." MAXIMUM WORKING STRESS SHALL NOT EXCEED 20,000 PSI.
- COMPLY WITH FOLLOWING REQUIREMENTS OF CURRENT SPECIFICATIONS FOR STANDARDS LISTED, EXCEPT WHERE MORE STRINGENT REQUIREMENTS ARE INDICATED ON DRAWINGS OR SPECIFIED HEREIN:
 - AMERICAN IRON AND STEEL INSTITUTE
 - "SPECIFICATIONS FOR THE DESIGN OF COLD-FORMED STEEL STRUCTURAL MEMBERS."
 - AMERICAN WELDING SOCIETY
 - AWS D1.3 "STRUCTURAL WELDING CODE - SHEET STEEL."
 - ROOF DECK MATERIAL SHALL BE ASTM A 653, GRADE 33 OR HIGHER WITH ASTM A 924, G60 ZINC-COATING. TYPE B; 1 1/2 INCH DEPTH AND 20 GAUGE.
 - ACCESSORIES: ASTM A 924, G60 ZINC-COATING.
 - APPROVED DECK MANUFACTURERS ARE:
 - UNITED STEEL DECK
 - VULCRAFT
 - C OR APPROVED EQUIVALENT
 - PROVIDE COVER PLATES, ROOF SUMP PANS, POUR STOPS, COLUMN CLOSURES, END CLOSURES, COVER PLATES AND FILLERS AS REQUIRED BY THE STEEL DECK INSTITUTION AS INDICATED ON DRAWINGS; USE DECK MANUFACTURER'S STANDARDS.
 - FABRICATE ACCESSORIES INCLUDING METAL CLOSURE STRIPS FOR OPENINGS BETWEEN DECK AND OTHER CONSTRUCTION OF NOT LESS THAN 18 GAGE SHEET STEEL OF SAME QUALITY AS DECK UNITS. FORM TO CONFIGURATION REQUIRED TO PROVIDE TIGHT-FITTING CLOSURES AT OPEN ENDS OF FLUTES AND SIDES OF DECK UNITS.
 - PLACE ACCESSORY UNITS IN ACCORDANCE WITH MANUFACTURER'S RECOMMENDATIONS.
 - CUT AND FIT DECK UNITS AND ACCESSORIES AROUND OTHER WORK PROJECTING THROUGH AND ADJACENT TO DECK UNITS AS INDICATED ON DRAWINGS. PROVIDE NEAT, SQUARE AND TRIM CUTS.
 - DECK SHALL BE WELDED AT 18 INCHES ON CENTER AT ALL INTERIOR SUPPORTS AND 12 INCHES ON CENTER AT ALL EXTERIOR SUPPORTS WITH A 5/8 INCH DIAMETER PUDDLE WELD. PROVIDE SIDE LAP CONNECTION AT 36 INCHES ON CENTER. MINIMUM THREE PER SPAN UNLESS NOTED OTHERWISE OR MINIMUM SIDE LAP CONNECTIONS REQUIRED BY THE STEEL DECK INSTITUTE. SELF-TAPPING SCREWS MAY BE USED WITH APPROVAL OF ENGINEER.

METAL DECK (CONT'D)

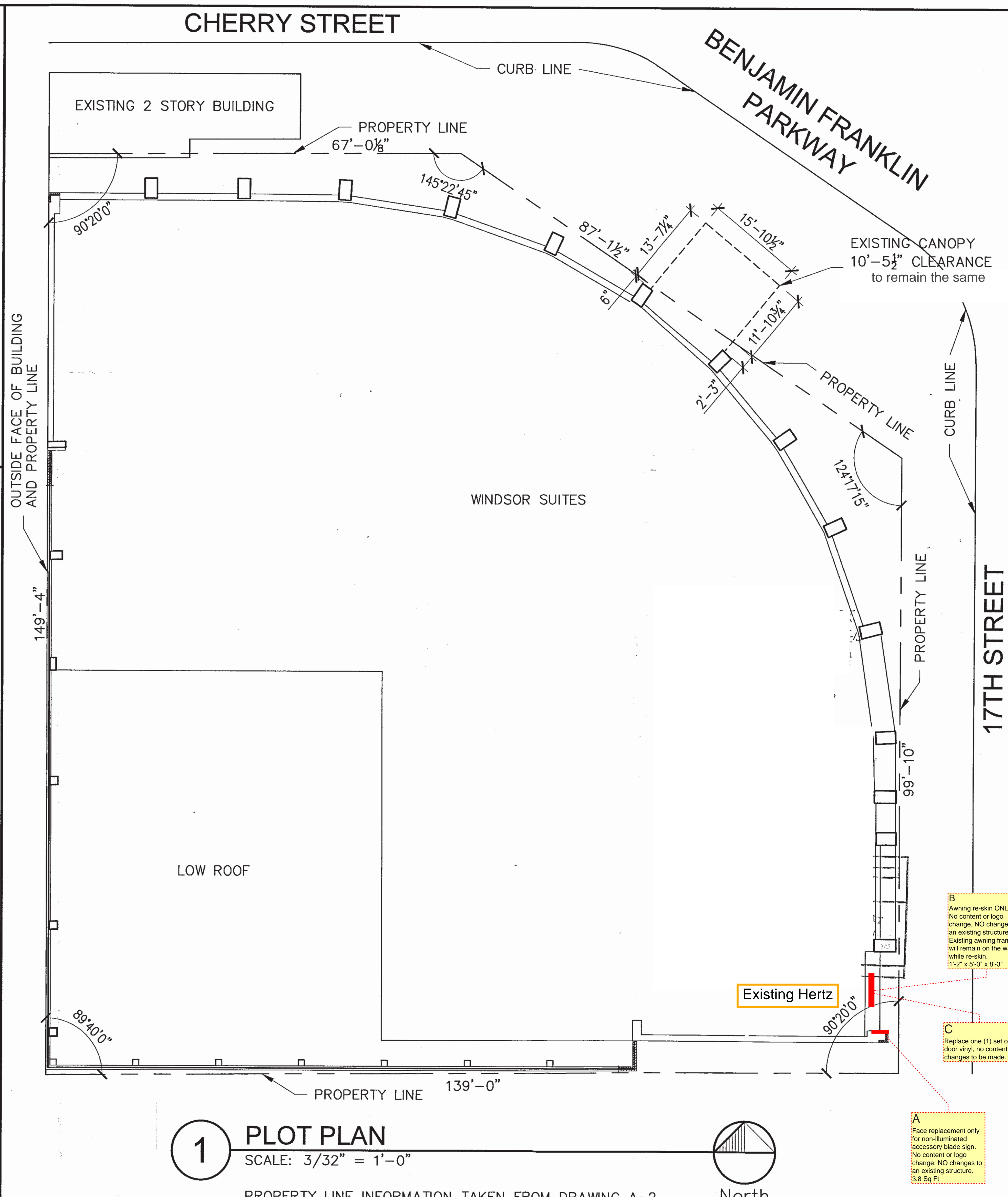
- END LAPS SHALL BE A NOMINAL 2 INCHES POSITIONED OVER SUPPORTS.
- COAT ALL WELDS AND ABRASSED AREAS WITH ZINC RICH GALVANIZING PRIME PAINT.
- DO NOT SUSPEND FROM METAL DECKS.

COLD FORMED METAL FRAMING

- COMPLY WITH FOLLOWING REQUIREMENTS OF CURRENT SPECIFICATIONS FOR STANDARDS LISTED, EXCEPT WHERE MORE STRINGENT REQUIREMENTS ARE INDICATED ON DRAWINGS OR SPECIFIED HEREIN:
 - AISI SPECIFICATIONS AND STANDARDS: COMPLY WITH:
 - AISI S100 "NORTH AMERICAN SPECIFICATION FOR THE DESIGN OF COLD-FORMED STEEL STRUCTURAL MEMBERS."
 - AISI S200 "NORTH AMERICAN STANDARD FOR COLD-FORMED STEEL FRAMING - GENERAL PROVISIONS."
 - AISI S201 "NORTH AMERICAN STANDARD FOR COLD-FORMED STEEL FRAMING - PRODUCT STANDARD."
 - AISI S211 "NORTH AMERICAN STANDARD FOR COLD-FORMED STEEL FRAMING - WALL STUD DESIGN."
 - AISI S212 "NORTH AMERICAN STANDARD FOR COLD-FORMED STEEL FRAMING - HEADER DESIGN."
 - AISI S213 "NORTH AMERICAN STANDARD FOR COLD-FORMED STEEL FRAMING - LATERAL DESIGN."
 - AISI "CODE OF STANDARD PRACTICE FOR COLD-FORMED STEEL STRUCTURAL FRAMING."
 - WELDING QUALIFICATIONS: QUALIFY PROCEDURES AND PERSONNEL ACCORDING TO THE FOLLOWING:
 - AWS D1.1/D1.1M, "STRUCTURAL WELDING CODE - STEEL"
 - AWS D1.3/D1.3M, "STRUCTURAL WELDING CODE - SHEET STEEL"
- MANUFACTURERS: BASIS OF DESIGN SUBJECT TO COMPLIANCE WITH REQUIREMENTS, PROVIDE COLD-FORMED METAL FRAMING PRODUCTS MANUFACTURED BY CLARKDIETRICH BUILDING SYSTEMS OR COMPARABLE PRODUCTS FROM MEMBERS OF THE SFAI.
- MATERIAL - COLD-FORMED STEEL FRAMING, GENERAL
 - STEEL SHEET: ASTM A 1003/A 1003M, STRUCTURAL GRADE, TYPE H, METALLIC COATED, OF GRADE AND COATING WEIGHT AS FOLLOWS:
 - GRADE: ST33H (ST230H).
 - COATING: G60 (Z180).
 - FRAMING
 - STEEL STUDS: MANUFACTURER'S STANDARD C-SHAPED STEEL STUDS, OF WEB DEPTHS INDICATED, PUNCHED, WITH STIFFENED FLANGES, AND AS FOLLOWS:
 - MINIMUM BASE-METAL THICKNESS: 0.0329 INCH (0.84 MM).
 - FLANGE WIDTH: 1-5/8 INCHES (41 MM).
 - STEEL TRACK: MANUFACTURER'S STANDARD U-SHAPED STEEL TRACK, OF WEB DEPTHS INDICATED, UN-PUNCHED, WITH UN-STIFFENED FLANGES, AND AS FOLLOWS:
 - MINIMUM BASE-METAL THICKNESS: MATCHING STEEL STUDS.
 - FLANGE WIDTH: 1-1/4 INCHES (32 MM).
 - BRIDGING AND SPACER BAR:
 - MINIMUM BASE-METAL THICKNESS: 0.0538 INCH (1.37 MM).
 - SIZE: 1-1/4 BY 1-1/4 BY 50 INCHES (32 BY 32 BY 1270 MM) LONG, PRE-NOTCHED AT 12, 16 AND 24 INCHES (305, 406, AND 610 MM) CENTERS.
 - MECHANICAL FASTENERS: ASTM C 1513, CORROSION-RESISTANT-COATED, SELF-DRILLING, SELF-TAPPING, STEEL DRILL SCREWS.
 - HEAD TYPE: LOW-PROFILE HEAD BENEATH SHEATHING, MANUFACTURER'S STANDARD ELSEWHERE.
 - WELDING ELECTRODES: COMPLY WITH AWS STANDARDS.

CONSTRUCTION NOTES

- GENERAL
 - WHERE DIMENSIONS ARE INDICATED FOR EXISTING STRUCTURES, THEY ARE APPROXIMATE AND FOR REFERENCE ONLY. CONTRACTOR SHALL VERIFY IN FIELD (VIF) ALL DIMENSIONS/ELEVATIONS PRIOR TO CONSTRUCTION. ANY VARIATIONS BETWEEN EXISTING DIMENSIONS/ELEVATIONS ON DRAWINGS SHALL BE REPORTED TO ENGINEER. ALL OMISSIONS OR CONFLICTS AMONG VARIOUS ELEMENTS OF DRAWINGS AND/OR SPECIFICATIONS SHALL BE REPORTED TO ENGINEER BEFORE PROCEEDING WITH ANY WORK.
 - FIELD VERIFY THE LOCATIONS OF EXISTING STRUCTURES, UTILITIES, ETC., AND NOTIFY ENGINEER OF INTERFERENCES NOT NOTED ON DRAWINGS.
 - PRIOR TO BEGINNING WORK, EACH WORK AREA IS TO BE COMPLETELY ENCLOSED AND PROTECTION PROVIDED FOR PUBLIC ACCESS. THE CONTRACTOR SHALL BE RESPONSIBLE FOR TEMPORARY BARRIER AND PROTECTION DESIGN.
 - VISITS: JOB SITE BY ENGINEER TO OBSERVE CONSTRUCTION DO NOT IN ANY WAY MEAN GUARANTEE OF CONTRACTOR'S WORK, NOR RESPONSIBILITY FOR COORDINATION, SUPERVISION, NOR SAFETY AT JOB SITE.
 - ANY OPERATIONS THAT CREATE EXCESSIVE NOISE TO BE COORDINATED WITH THE OWNER. LOCAL NOISE ORDINANCE WILL GOVERN OPERATIONS.
 - FIRE SUPPRESSION AND BUILDING SECURITY SYSTEM MUST BE MAINTAINED AT ALL TIMES. COORDINATE SYSTEM OPERATIONS WITH OWNER.
 - TAKE EXTREME CAUTION NOT TO DAMAGE IN ANY WAY THE EXISTING ELECTRICAL SERVICE, TELECOMMUNICATION LINES, COMPUTER LINES, ETC. LOCATE AND MARK ALL SERVICE LINES.
 - DO NOT SCALE DRAWINGS.
- CONSTRUCTION PHASING
 - CONTRACTOR SHALL BE RESPONSIBLE FOR COORDINATION OF ALL CONSTRUCTION ACTIVITY AND SHALL COORDINATE FULLY WITH OWNER FOR ALL CONSTRUCTION PHASING.
 - CONTRACTOR SHALL MAINTAIN PUBLIC ACCESS TO THE LOBBY AT ALL TIMES.
 - STAGING AREA FOR CONTRACTOR TO BE COORDINATED WITH THE OWNER.
 - IT WILL BE NECESSARY TO SCHEDULE CONTRACTOR DELIVERIES AND WASTE HAULING TO MINIMIZE INTERFERENCE WITH EXISTING BUILDING OPERATIONS. CONTRACTOR SHALL COORDINATE WITH OWNER.



ISSUE NO.	DATE	DESCRIPTION
10/16/13		ZONING & ART COMMISSION

PROJECT NO. R2-2011-586
DRAWN BY MCM
CHECKED BY ARK

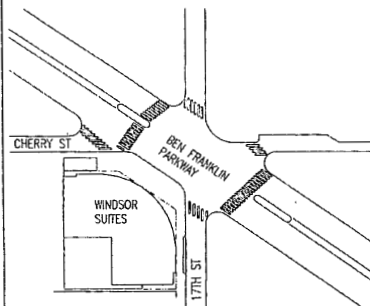
The Drawings are the property of Carl Walker, Inc. and are not to be reused or reproduced without written permission from Carl Walker, Inc.

SHEET TITLE
COVER SHEET AND DRAWING INDEX

G001

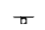


WINDSOR SUITES

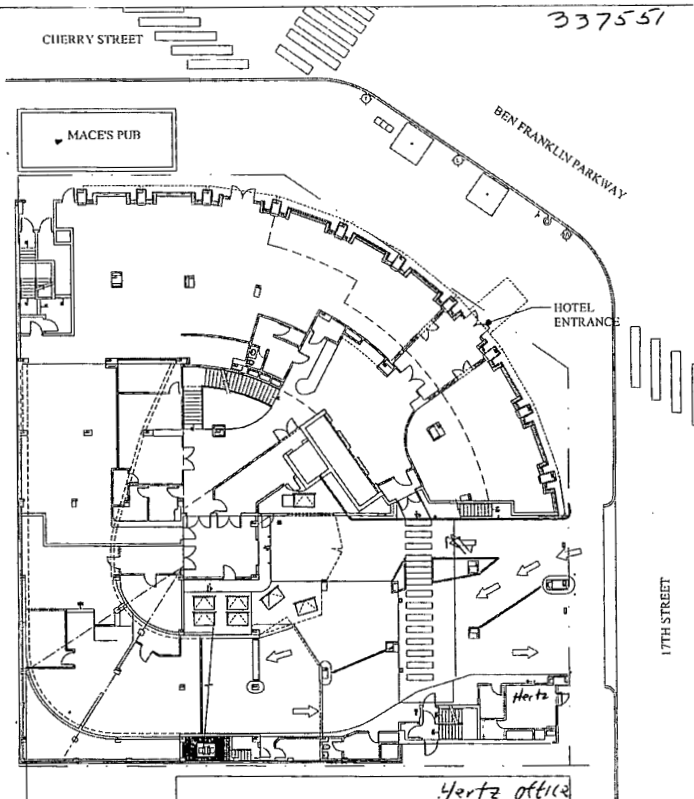
1700 BENJAMIN FRANKLIN PARKWAY
PHILADELPHIA, PA 19103
October 17, 2007



Site Location Map

LEGEND

-  TRAFFIC LIGHT
-  STREET LAMP
-  DIRECTIONAL INFORMATION SIGN
-  FIRE HYDRANT
-  TREE LOCATION
-  NEWSPAPER STAND



Site Plan

LOCATION NUMBER:

030180A- HLE - 17th & Ben Franklin

SITE ADDRESS:

1700 Benjamin Franklin Pkwy
Philadelphia, PA 19103

SIGN CODE:

Site Plan: See Site Plan Photo

Sign Code:

Formula for sq. ft.: 2 sq. ft. per lin. Ft. of ground floor frontage; 100 sq. ft. per sign

of Signs: Not Stipulated

Freestanding Signs: Not Allowed for Tenants - Contact property owner

Permit Processing Time: 1-15 Days

Note: Permitting will take longer due to this site is in the CMX-5, all sign information to be determined by L&I & ART Commission when reviewed

LL Approval: Yes

Hertz



SITE PLAN

Scale: REFERENCE ONLY

1700 BENJAMIN FRANKLIN PKWY
PHILADELPHIA, PA 19103



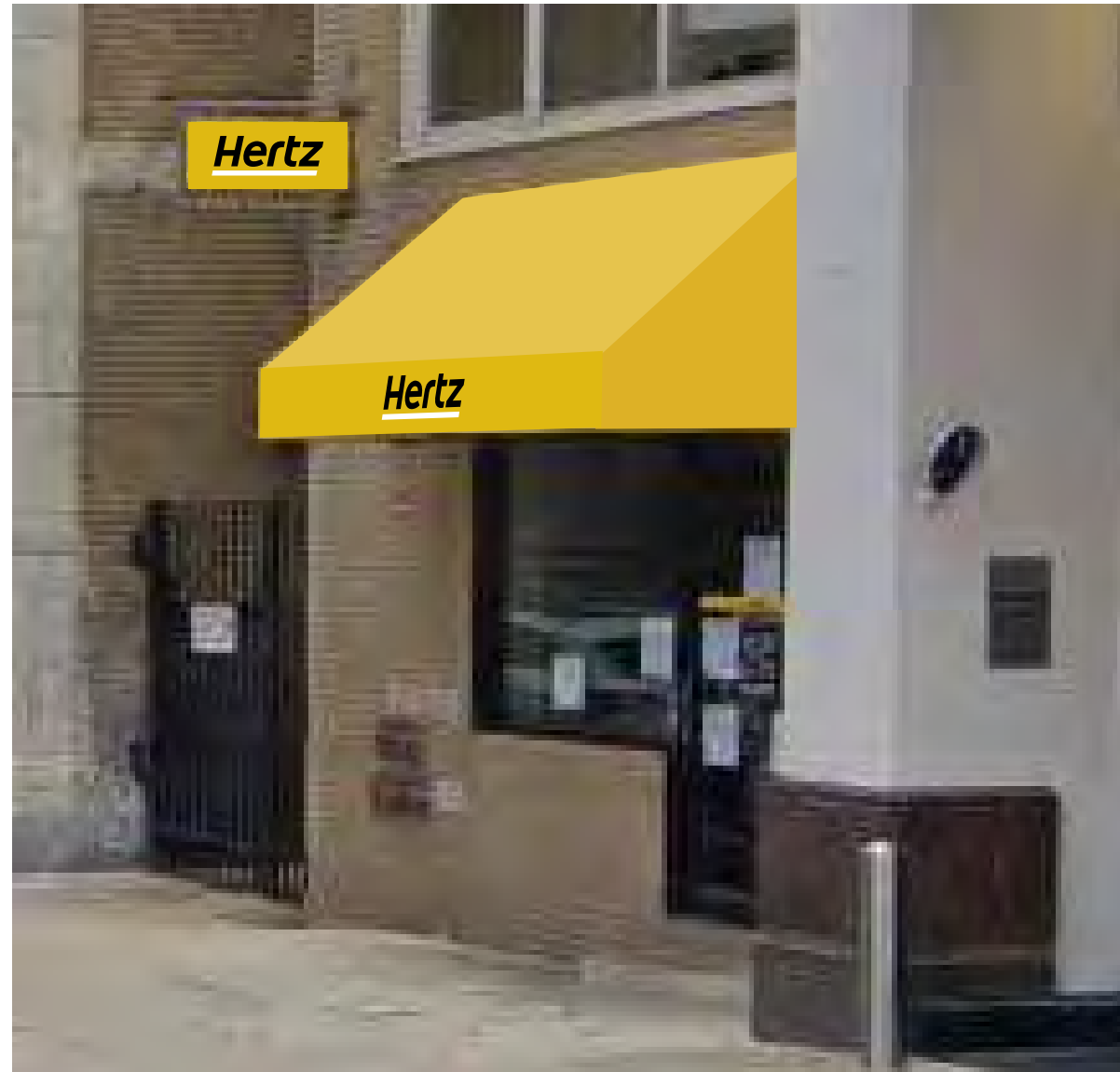
A B C

A

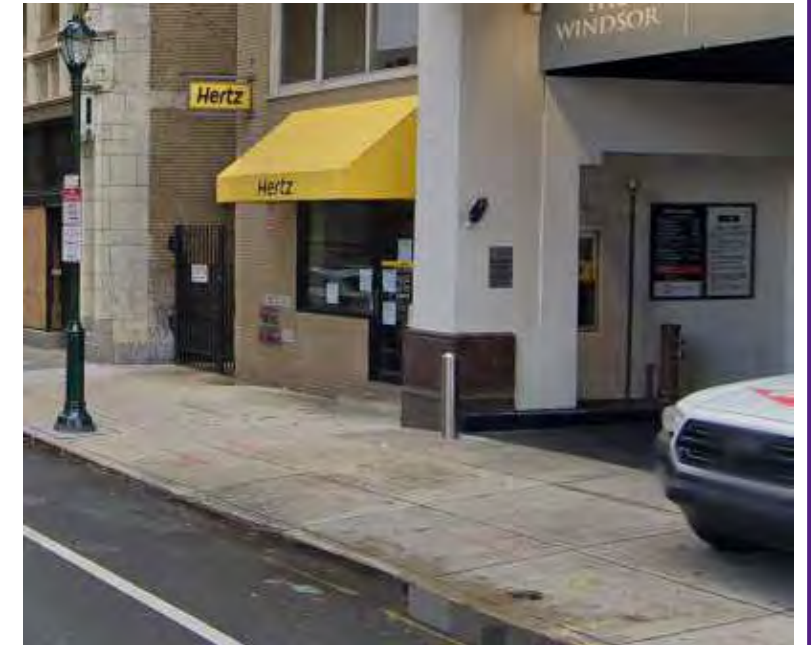
STOREFRONT ELEVATION

Scaled Proportionally

B



EXISTING CONDITIONS



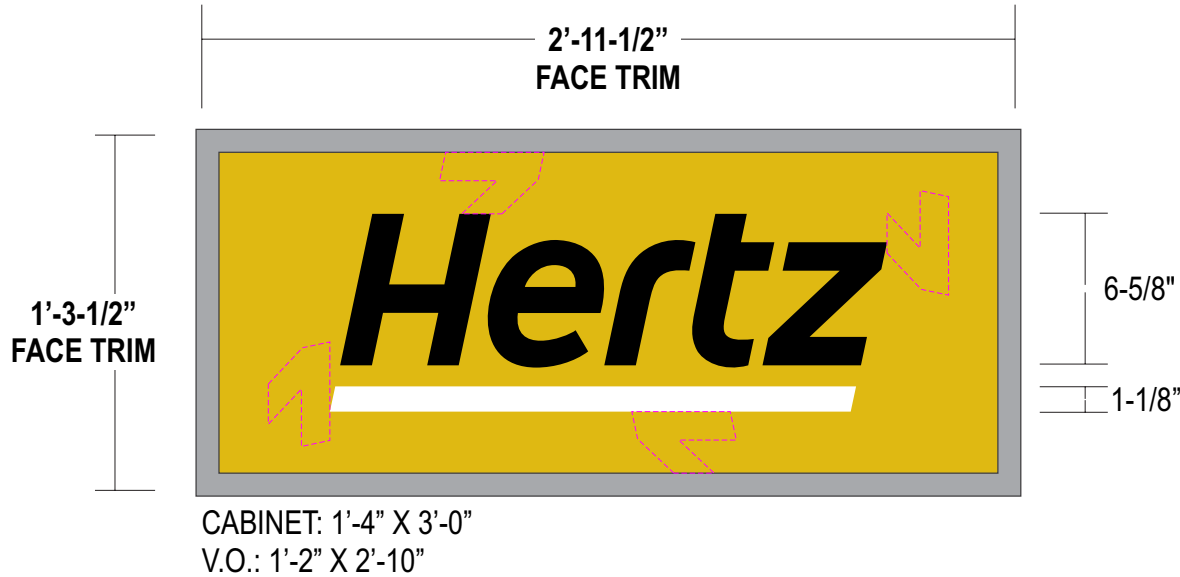
A

FACE REPLACEMENTS

Scale: 3"=1'-0"

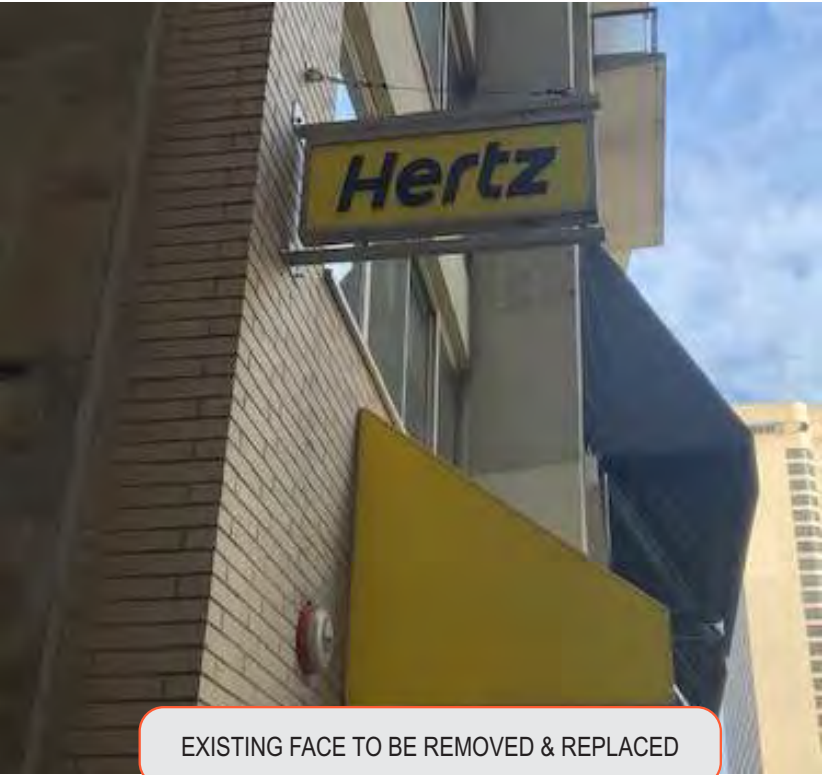
3.8 square feet

Face replacement only for non-illuminated accessory blade sign.
No content or logo change, NO changes to an existing structure.



DOTTED LINES STANDARD 1/2 Z SPACING

EXISTING CONDITIONS



EXISTING FACE TO BE REMOVED & REPLACED

- CABINET:** Existing cabinet
- FACES:** .080 alum. panel
- GRAPHICS:** Surface applied vinyl graphics to match colors shown
- QUANTITY:** (2) TWO faces required for D/F blade sign on Storefront elevation

COLOR PALETTE



GRAPHICS:
PMS 7406C
3M 3630-4263 Trans Hertz Yellow



GRAPHICS:
White



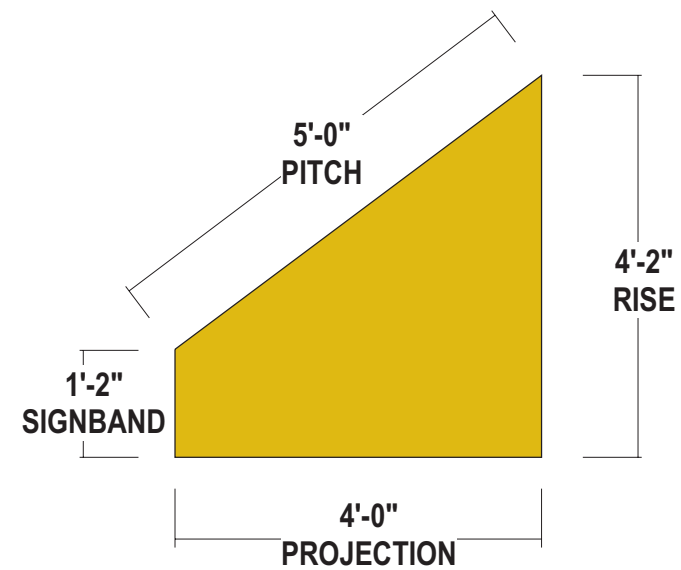
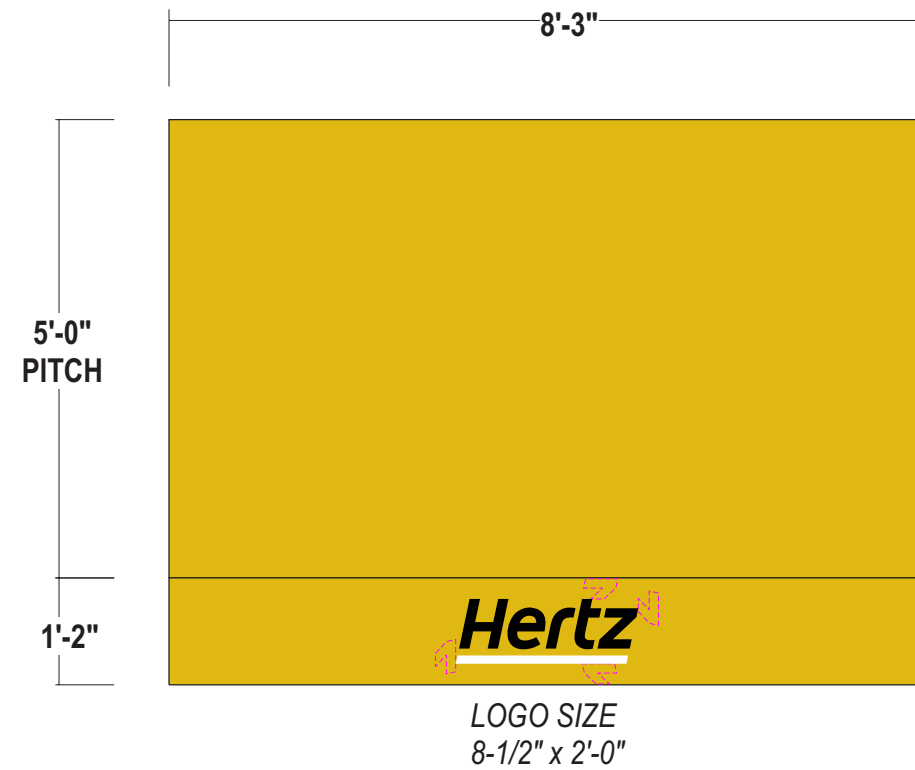
GRAPHICS:
3M 3630-22 Matte Black

B

AWNING RESKIN

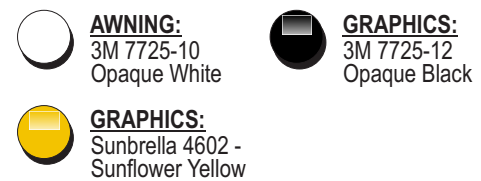
Scale: 1/2"=1'-0"

1.4 Square Feet



- FRAME:** Existing frame to remain
- FABRIC:** Sunbrella 4602 - Sunflower Yellow
- GRAPHICS:** Heat transferred graphics as shown
- ATTACH:** Staples
- QUANTITY:** (1) one awning re-skin required for Storefront elevation

COLOR PALETTE



Awning re-skin ONLY.

No content or logo change, NO changes to an existing structure.

Existing awning frame will remain on the wall while re-skin.

EXISTING CONDITIONS

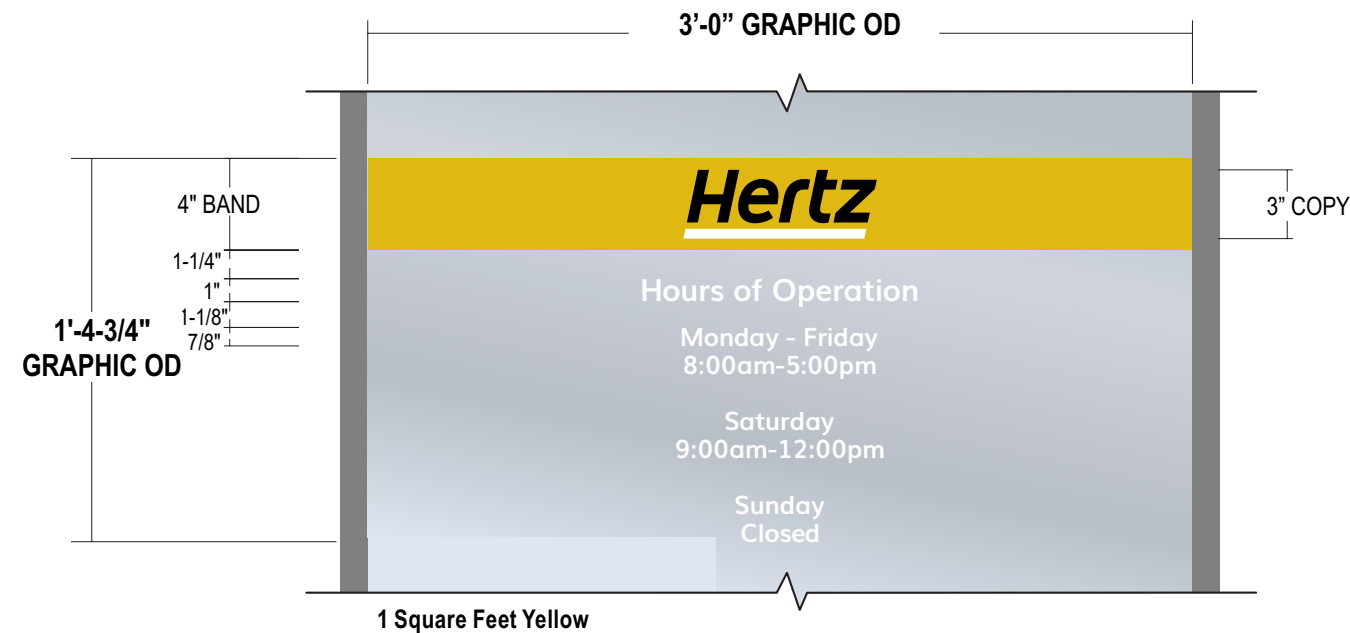


C

HOURS OF OPERATION DECALS

Scale: 1-1/2"=1'-0"

Replace one (1) set of door vinyl, no content changes to be made.



*HERTZ BAND TO BE MANUFACTURED AT STANDARD 3FT LENGTH;
TO BE TRIMMED IN FIELD*

COLOR PALETTE



GRAPHICS:
3M 7725-10 White



GRAPHICS:
3M 7725-12 Black

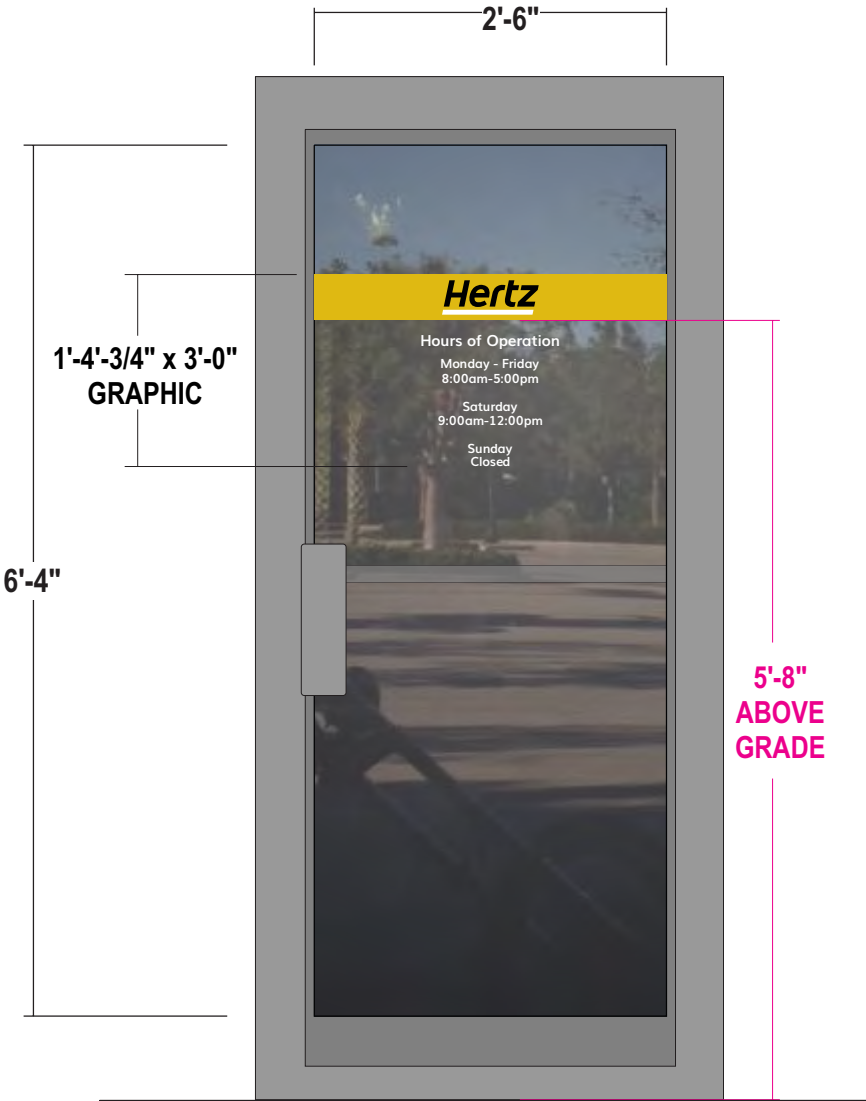


GRAPHICS:
PMS 7406C
3M 7725-VTB19191
Opaque Hertz Yellow

EXISTING CONDITIONS



ALL GLASS TO BE CLEANED THOROUGHLY
PRIOR TO NEW INSTALL OF VINYL



TYPICAL DOOR

Scale: 3/4"=1'-0"

- APPLICATION.:** First surface to outside of glass
- GRAPHICS:** Die cut white, black, and yellow vinyls
- QUANTITY:** (1) ONE vinyl set required