

## COMMENT ON NATIONAL REGISTER NOMINATION

**ADDRESS: 2527-37 N. Broad Street, E.A. Wright Bank Note Company Building**

**OVERVIEW:** The Pennsylvania Historical & Museum Commission (PHMC) has requested comments from the Philadelphia Historical Commission on the National Register nomination of 2527-37 N. Broad Street Indiana Avenue located in the North Central Philadelphia and historically known as the E.A. Wright Bank Note Company Building. PHMC is charged with implementing federal historic preservation regulations in the Commonwealth of Pennsylvania, including overseeing the National Register of Historic Places in the state. PHMC reviews all such nominations before forwarding them to the National Park Service for action. As part of the process, PHMC must solicit comments on every National Register nomination from the appropriate local government. The Philadelphia Historical Commission speaks on behalf of the City of Philadelphia in historic preservation matters including the review of National Register nominations. Under federal regulation, the local government not only must provide comments, but must also provide a forum for public comment on nominations. Such a forum is provided during the Philadelphia Historical Commission's meetings.

The nomination for the building at 2527-37 N. Broad Street asserts the property is significant under Criterion A in the Area of Industry for its important association with the E.A. Wright Bank Note Company, which was an engraver and printer of a wide range of paper goods including diplomas, stamps, bank notes, personal stationery and calendars beginning in the nineteenth century. By the early twentieth century, the company expanded its product lines to include products for businesses and professionals. While occupying the subject property, the company was one of the largest of its kind in the country. The Period of Significance begins in 1914 with the construction of the building and ends in 1962 when the company was sold by the Wright family. The property was added to the Philadelphia Register of Historic Places in 2020.



United States Department of the Interior  
National Park Service

# National Register of Historic Places Registration Form

This form is for use in nominating or requesting determinations for individual properties and districts. See instructions in National Register Bulletin, *How to Complete the National Register of Historic Places Registration Form*. If any item does not apply to the property being documented, enter "N/A" for "not applicable." For functions, architectural classification, materials, and areas of significance, enter only categories and subcategories from the instructions.

## 1. Name of Property

Historic name: E.A. Wright Bank Note Company Building

Other names/site number: N/A

Name of related multiple property listing: N/A

## 2. Location

Street & number: 2527-2537 N. Broad Street

City or town: Philadelphia State: PA County: Philadelphia

Not for Publication: NA Vicinity: NA

## 3. State/Federal Agency Certification

As the designated authority under the National Historic Preservation Act, as amended,

I hereby certify that this  nomination  request for determination of eligibility meets the documentation standards for registering properties in the National Register of Historic Places and meets the procedural and professional requirements set forth in 36 CFR Part 60.

In my opinion, the property  meets  does not meet the National Register Criteria. I recommend that this property be considered significant at the following level(s) of significance:

national  statewide  local Applicable National Register Criteria:  A  B  C  D

Signature of certifying official: <u>Deputy SHPO/Pennsylvania Historical &amp; Museum Commission</u> Title/State or Federal agency/bureau or Tribal Government	Date
--	------

In my opinion, the property <input type="checkbox"/> meets <input type="checkbox"/> does not meet the National Register criteria.	
Signature of commenting official:	Date
Title/State or Federal agency/bureau or Tribal Government	

## 4. National Park Service Certification

I hereby certify that this property is:

- entered in the National Register
- determined eligible for the National Register
- determined not eligible for the National Register
- removed from the National Register
- other (explain) \_\_\_\_\_

Signature of the Keeper

Date of Action

E.A. Wright Bank Note Company Building

Philadelphia, PA

Name of Property

County and State

**5. Classification**

**Ownership of Property**

Private:

Public – Local

Public – State

Public – Federal

**Category of Property**

Building(s)

District

Site

Structure

Object

**Number of Resources within Property**

Contributing	Noncontributing	
<u>1</u>	<u>0</u>	buildings
<u>0</u>	<u>0</u>	sites
<u>0</u>	<u>0</u>	structures
<u>0</u>	<u>0</u>	objects
<u>1</u>	<u>0</u>	Total

Number of contributing resources previously listed in the National Register: 0

**6. Function or Use**

**Historic Functions:** COMMERCE/TRADE – Manufacturing

**Current Functions:** Vacant/Not in Use

E.A. Wright Bank Note Company Building

Name of Property

Philadelphia, PA

County and State

## 7. Description

**Architectural Classification:** Commercial Style

**Principal exterior materials of the property:** Brick, Concrete

### Narrative Description

The E.A. Wright Bank Note Company Building is located on North Broad Street in North Philadelphia. Built in 1914 by the Philadelphia firm of William Steele and Sons for the E.A. Wright Bank Note Company, it was the company's exclusive manufacturing plant, and also contained their sales, office, storage and shipping operations. The 6-story building is clad in red brick with a concrete frame and painted and decorative glazed terra cotta detailing and bas-reliefs designed by the Conkling Armstrong Terra Cotta Company, another local firm. On the east elevation is a circular, projecting tan brick chimney with brown brick lettering reading "WRIGHT" and the north, east and south elevations also feature numerous painted ghost signs. The E.A. Wright Bank Note Company Building retains integrity, as it has had no substantial alterations on the interior or exterior since the time of construction.

The building stands on the east side of N. Broad Street between W. Cumberland Street to the south and W. Huntingdon Street to the north. Directly to the north of the building is the North Broad Street Station (1929, NR 1996) and the associated former Philadelphia-Germantown railway lines are to the east of the subject property. In addition, the triangularly shaped block also contains 1-, 2- and 3-story commercial and industrial buildings to the south, along with now-overgrown lots in the northwest and southeast corners. The area to the north and south primarily contains low- and mid-rise industrial and commercial buildings that date to the late 19<sup>th</sup> and early 20<sup>th</sup> centuries. The blocks to the east and west of the E.A. Wright Building almost exclusively contain low-rise, residential buildings that date to the late 19<sup>th</sup> and early 20<sup>th</sup> centuries, associated buildings such as churches and schools, and now-empty lots.

The building stands on a rectangular lot with a paved sidewalk to the west along N. Broad Street, an unassociated 1-story, commercial building abutting the subject property to the south and an unassociated, open, paved lot to the east. The site slopes down to the east, exposing the basement level on the east and part of the north elevations. Along the east and north elevations is a low, L-shaped, concrete wall with concrete piers and topped by a chain link and barbed wire fence. The wall is open at the N. Broad Street end, creating a loading area that parallels the north elevation. To the north of the concrete wall is a narrow, paved alley that was used to access the rear of the adjacent train station. The proposed National Register boundary extends along the outside of the concrete wall to the north and east of the building and along the south and west building elevation walls, footprint of the building, as

E.A. Wright Bank Note Company Building

Name of Property

Philadelphia, PA

County and State

none of the surrounding area has any historic association with the building or the company that operated it.

The primary (west) façade faces N. Broad Street (Photographs #1-4). The 1<sup>st</sup> floor is clad in painted terra cotta block with a painted granite base and the upper floors are clad in red brick with glazed terra cotta quoins flanking the outermost bays. The three center bays have brick panels in the spandrels. Along the roofline is a prominent original metal cornice with scrolled brackets between the bays and flanking the dentils. On the 1<sup>st</sup> floor, the northernmost bay contains an elevated entrance with plywood infill and a metal, Roman lattice transom, which is located up five granite steps that are flanked by painted stone cheek walls (Photograph #2). Above the entrance is a painted, terra cotta lintel with centered cartouche surrounded by a garland and supported by elaborate, scrolled brackets with lion heads. The second and fourth bays from the north contain large openings with late 20<sup>th</sup> century stucco and plywood infill (Photographs #2 and 3).<sup>1</sup> The center bay contains the primary entrance to the building. The elevated entrance is located up five granite steps that are flanked by painted stone cheek walls (Photograph #3). Although the entrance itself has been replaced with a double-leaf metal door and stucco infill, the painted terra cotta base remains. Surrounding the entrance is a prominent surround of painted terra cotta with fluted Ionic columns that support an elaborate architrave with scrolls, brackets, a centered garland and a damaged cartouche. The southernmost bay contains an infilled stucco panel at grade and a window opening above with full plywood infill (Photograph #4). The painted, terra cotta surround of the opening matches that of the northernmost bay. On the upper floors, all bays contain full plywood infill. In the northernmost bay, which was originally an open fire balcony, the metal railings remain in front of matching plywood infill.

The south elevation has the exposed and painted concrete structure with red brick infill in between (Photograph #5). The terra cotta elements and cornice from the west elevation also wrap around the west end of the façade. The elevation is six bays wide and, between the fourth and fifth bays from the west, is a small, recessed shaft. The window openings in the shaft, which occur at irregular intervals, contain multi-light steel units. On the 1<sup>st</sup> floor, the majority of the elevation has been obscured by an unrelated, 1-story, late 20<sup>th</sup> century commercial building, which was constructed on a previously vacant lot. The 2<sup>nd</sup> floor has two window openings with stone sills, arched heads and plywood infill near the center of the elevation. The 4<sup>th</sup> through 6<sup>th</sup> floors have two window openings near the center of the elevation. Three of the openings have the original multi-light, steel units and three have been infilled with brick. At the top left corner of the building is a painted ghost sign reading, "E.A Wright Co. / CO-- / AME---."

The east elevation is also six bays wide (Photographs #6 and 7). It has an exposed concrete frame, red brick spandrels and concrete sills. In the raised basement, the southernmost bay contains a single-leaf

---

<sup>1</sup> Historically, these openings contained windows above a terra cotta sill, but the openings were lowered at some point in the late 20<sup>th</sup> century. The reason is not known.

E.A. Wright Bank Note Company Building

Name of Property

Philadelphia, PA

County and State

metal door with an arched head. The second bay from the south, which contains a single-leaf metal door below a 9-light steel transom. The third bay from the south contains an original 24-light steel windows with one 4-light awning section. The fourth bay from the south contains original tripartite 24-light steel windows with one 4-light awning section. The fifth bay from the south contains a single-leaf metal door to the south of paired original 24-light steel window with two 4-light awning sections. The northernmost bay contains quadripartite original 24-light steel window with two 4-light awning sections. On the remaining floors, the southernmost bay contains a single-leaf metal door with an arched head. Each door provides access to an original metal fire balcony that connects to the second bay from the south, which contains a single-leaf metal door below a 9-light steel transom. On all floors, the third bay from the south contains an original 24-light steel window with two 4-light awning sections. Where remaining, the units are in various stages of disrepair. On the 1<sup>st</sup> floor, the three northernmost bays contain original quadripartite 28-light steel windows with two 4-light awning sections. On the 2<sup>nd</sup> through 6<sup>th</sup> floors, the three northernmost bays contain original quadripartite 24-light steel windows with two 4-light awning sections. In the center of the elevation is a circular, projecting tan brick chimney with brown brick lettering reading "WRIGHT." The prominent placement of the chimney and the accompanying lettering was likely positioned to promote the company to the adjacent railway line. There is also an illegible, painted ghost sign at the north end between the 1<sup>st</sup> and 2<sup>nd</sup> floors.

The north elevation is seven bays wide on the 1<sup>st</sup> floor and eight bays wide above (Photographs #7 and 8). It has an exposed concrete frame, red brick spandrels and concrete sills. The raised basement is present in the three easternmost bays. The easternmost bay contains a single-leaf metal door and it, along with the remaining two bays, contain 24-light steel windows with one 4-light awning section. On the 1<sup>st</sup> floor, the three easternmost bays contain quadripartite 28-light steel windows with two 4-light awning sections. The fourth bay from the east contains paired 28-light steel windows with two 4-light awning sections. The fifth bay from the east contains a garage-style metal door with a deteriorated, multi-light steel transom, which was likely originally used for loading. The sixth bay from the east contains an exterior, freight elevator door with a brick surround and stucco infill above. The westernmost bay contains a narrow door opening with plywood infill. On the 2<sup>nd</sup> through 6<sup>th</sup> floors, the three easternmost bays contain quadripartite 24-light steel windows with two 4-light awning sections. Where remaining, the units are in various stages of disrepair. The fourth and sixth bays from the east contain paired 24-light steel windows with two 4-light awning sections. The fifth bay from the east contains a narrow door opening and transom, both with plywood infill. There is no evidence as to what the doors accessed. The seventh bay from the south has no openings. The westernmost bay has a single 24-light steel window with one 4-light awning section. At the east end of the elevation, between the 2<sup>nd</sup> and 3<sup>rd</sup> floors is a ghost sign reading, "E.A. Wright / Bank Note / Company." The sign continues between the 1<sup>st</sup> and 2<sup>nd</sup> floors reading, "Engravers / Printers / -----."

The roof of the building is flat with a shallow, brick parapet with a stone cap along all elevations. A portion of the parapet along the north elevation is missing. There is a 1-story brick penthouse in the

E.A. Wright Bank Note Company Building

Name of Property

Philadelphia, PA

County and State

northwest corner. There is also a large, concrete water tower platform near the southeast corner. It is not known when the water tower itself was removed.

*Interior*

The interior of the building is primarily open in plan and largely conveys the historic appearance with exposed concrete floors, exposed and painted concrete ceilings, round concrete columns with mushroom capitals, which are arranged in an axial grid, painted brick walls and exposed sprinklers (Photographs #10-12, 14, 16, 17, 19-24). In the late-20<sup>th</sup> century, the western portion of the floor plate, as well as along the south elevation, was subdivided into an irregular series of space with contemporary finishes, including carpeted floor, dropped acoustical tile ceilings and fluorescent lighting.<sup>2</sup> Period maps show that, historically, there was a vault in the center of the south elevation in the basement and boilers in the northeast corner of the basement. Additionally, bathrooms were located to the east and west of the shaft on the south elevation. No other information is known about how the interior of the building was historically used and no other historic finishes remain.

There are two stairways, which are located adjacent to the fire balconies, and one freight elevator, all of which are original. The elevator and one stairway are located in the northwest corner (Photographs #15 and 18). The elevator has flush, metal doors, metal bumpers and no trim. The second stairway is located in the southeast corner of the floor plate, adjacent to the fire balconies. The U-return stairways have concrete treads and risers and painted, pipe metal railings. The shaft walls are of painted brick. All circulation provides access between all floors.

*Integrity*

The E.A Wright Bank Note Company Building retains integrity, as it has had no substantial alterations since the time of construction. Both the overall form and the defining interior and exterior industrial characteristics remain, including its brick cladding, brick detailing, terra cotta detailing and bas-reliefs, metal cornice, regular window openings, multi-light steel window units, painted and exposed concrete and brick, industrial circulation and open floor plates. The building also features ghost signs on the north, east and south elevations, as well as a prominent brick chimney on the east elevation bearing the name "WRIGHT." These decorative and promotional elements are particularly significant as they combined to serve as a direct public relations tool for the company. The most significant exterior alterations are the removal of the original entrance doors, 1<sup>st</sup> floor bay enlargements and the substantially deteriorated window units. Fortunately, however, at least one of each window type remains to convey the historic configuration of the original sash. On the interior, there have been no major alterations other than the insertion of some partitions and limited late 20<sup>th</sup> century finishes. The

---

<sup>2</sup> These partitions have been intentionally omitted from the included existing floor plans.

E.A. Wright Bank Note Company Building

Name of Property

Philadelphia, PA

County and State

quality, placement and condition of the construction materials, as well as the industrial style are highly characteristic of the period and remain wholly intact. As such, the loadbearing, fireproof construction, intact finishes and the voluminous spaces effectively relay the sense of place and the manufacturing history of the historic building.

The location and setting of the building remain intact since the initial construction. The workmanship is expressed in a consistent architectural style, is of good quality and is in keeping with contemporary trends.

E.A. Wright Bank Note Company Building

Name of Property

Philadelphia, PA

County and State

## 8. Statement of Significance

### Applicable National Register Criteria

- A. Property is associated with events that have made a significant contribution to the broad patterns of our history.
- B. Property is associated with the lives of persons significant in our past.
- C. Property embodies the distinctive characteristics of a type, period, or method of construction or represents the work of a master, or possesses high artistic values, or represents a significant and distinguishable entity whose components lack individual distinction.
- D. Property has yielded, or is likely to yield, information important in prehistory or history.

### Criteria Considerations

- A. Owned by a religious institution or used for religious purposes
- B. Removed from its original location
- C. A birthplace or grave
- D. A cemetery
- E. A reconstructed building, object, or structure
- F. A commemorative property
- G. Less than 50 years old or achieving significance within the past 50 years

**Areas of Significance:** Commerce/Trade

**Period of Significance:** 1914-1962

**Significant Dates:** 1914

**Significant Person:** NA

**Cultural Affiliation:** NA

**Architect/Builder:** William Steele and Sons

E.A. Wright Bank Note Company Building

Name of Property

Philadelphia, PA

County and State

### Statement of Significance

The E.A. Wright Bank Note Company Building has local significance under Criterion A, Industry, for its important association with the E.A. Wright Bank Note Company, which was an engraver and printer of a vast array of paper goods including diplomas, stamps, bank notes, personal stationery and calendars. The type of printing undertaken by the EA Wright company was traditionally used either to meet the needs of the upper class or for bulk orders. By the 1910s, however, the company expanded its product lines as “business concerns and professional people are now heavy consumers of engraved stationery, for they have recognized the fact that there is selling value in fine engraved printing.”<sup>3</sup> A period article about the company detailed its client lists, including general manufacturers, who ordered business, letter and note cards and bill heads; as well as jewelers, merchant tailors and art furniture dealers.<sup>4</sup> While occupying the subject property, the company was one of the largest of its kind in the country. The period of significance begins in 1914, when construction was completed, and ends in 1962, when the company was sold by the family and incorporated into a larger national company.

---

**Narrative Statement of Significance** (Provide at least **one** paragraph for each area of significance.)

#### *Company and Building History*

When the E.A. Wright Company was founded in 1872, both general printing and bank note printing had a firm foothold in the local economy. The latter was largely from the presence of the First Bank of the United States, which was founded in 1791 and the United States Mint, which was established there in 1792. Steel plate engraving began in Philadelphia in the early 19<sup>th</sup> century and it particularly resonated with currency printing, as the plates were difficult to replicate, thus ensuring against counterfeiting. Even after the national bank relocated to Washington, D.C., in the 1820s, bank note printing continued in Philadelphia as a prominent industry. The financial printing business got an additional boost in 1874, when the New York Stock Exchange required all trading companies to have printed certificates for stocks and bonds. By 1912, the value of the general printing industry in Philadelphia was \$45,000,000.<sup>5</sup>

In the late 19<sup>th</sup> and early 20<sup>th</sup> centuries, Philadelphia had nearly 1,000 printing firms. They ranged in size from one or two individuals to hundreds of employees and ranged in product type from newspapers and portraits to United States currency and bus tickets. It was into his environment that the E.A. Wright Company was established in Philadelphia in 1872 (Figures #1 and 2).<sup>6</sup>

---

<sup>3</sup> Salade, 1.

<sup>4</sup> *Philadelphia and Popular Philadelphians*, 230.

<sup>5</sup> “The Printing Industry in Philadelphia.” *Printing Trade News* 42 (1912): 43.

<sup>6</sup> “Ernest A. Wright” *The Philadelphia Inquirer* (1 June 1912): 13.

E.A. Wright Bank Note Company Building

Name of Property

Philadelphia, PA

County and State

Ernest Appelles Wright was born in England in 1851 and came to New York City in 1866. Once in Philadelphia, he established his business at two separate locations – 919 and 1032 Chestnut Street – but had little success and struggled to compete with Wright as the primary, full-time employee and designer.<sup>7</sup> In 1876, Wright found his first success during the Centennial Exposition, when one of his steel plate engravings of the Exposition was promoted by John Sartain, the general manager of the art department of the Exposition.<sup>8</sup> Not only did the engraving win a gold medal but Sartain also adopted Wright's image of the Exposition for his personal use, thereby serving as a prominent advertisement for the company.<sup>9</sup>

Known as a “leading engraver and printer in Philadelphia, of society, college and commercial work,” Wright was also “one of the leading experts and authorities upon engraving matters in both the United States and foreign countries.”<sup>10</sup> By the end of the 19<sup>th</sup> century, Wright's work was referred to as “original classical designs and novel methods of display [that] so pleased the savants that during the present year he has executed orders from more than one-half of all the colleges and high schools in the United States.”<sup>11</sup>

On May 30, 1906, the company was chartered with a capital of \$250,000. The company was to be engaged in “carrying on the business of engraving on steel, copper, brass, zinc, wood, and other materials, lithographing, electrotyping, photo-engraving and making process plates, printing in all its branches, book-binding and manufacturing parchment, cardboard and all kind of paper, envelopes, books and stationery.”<sup>12</sup> At the time, the company was “believed to be the largest steel plate printing press in the country capable of turning out steel plate illustrations such as adorn the walls of old mansions and the largest etchings of the modern school.”<sup>13</sup>

When Wright died in 1912, his sons, Ernest A. Wright, Jr. (b. 1880), who had joined his father's company in 1898, and Joseph A. Wright, took control of the company, as President and Vice-President, respectively. Shortly thereafter, in August 1913, the brothers decided to substantially expand the company by commissioning William Steele and Sons to construct a 6-story, brick and reinforced concrete building on N. Broad Street, measuring 124' by 175' (Figure #3).<sup>14</sup> Philadelphia-based Conkling Armstrong, a prominent terra cotta company, was responsible for the decorative terra cotta elements and the projected building cost was \$150,000 (Figure #4). The building operated as the company's exclusive manufacturing plant, and also contained sales and office space. The showroom for

<sup>7</sup> *Philadelphia and Popular Philadelphians* (Philadelphia, PA: The North American, 1891): 230.

<sup>8</sup> The Centennial Exposition of 1876 was first official World's Fair to be held in the United States.

<sup>9</sup> “Death of E.A. Wright.” *Walden's Stationer and Printer* 35:1 (1912): 14.

<sup>10</sup> *Philadelphia and Popular Philadelphians*, 230; “Death of E.A. Wright.”

<sup>11</sup> *Philadelphia and Popular Philadelphians*, 230.

<sup>12</sup> “Charter – E.A. Wright Bank Note Company.” Issued 30 May 1906.

<sup>13</sup> *Philadelphia and Popular Philadelphians*, 230.

<sup>14</sup> “New Construction.” *Philadelphia Real Estate Record and Builders' Guide* 28 (13 August 1913): 531.

E.A. Wright Bank Note Company Building

Name of Property

Philadelphia, PA

County and State

the company was located at 1218 Walnut Street (demolished), a more commercial, less industrial neighborhood.

As with many buildings, the subject property was deliberately and repeatedly used in marketing materials for the company. Referencing their “large, modern factory” and “one of the finest buildings in America devoted to the steel and copper plate engraving business,” the factory stood as the tangible reassurance of the quality of the product made within (Figure #5).<sup>15</sup> Period articles also noted the new construction saying, it was the “largest steel engraving plant in the world” and a “model in construction and equipment.”<sup>16</sup>

No information or physical evidence remains about how the interior of the building was used but period maps show that the basement contained boilers and a vault. The purpose of the vault is not known.

Once construction on the subject property was complete, the company focused on additional expansion, including sales offices in Cuba, Mexico, Canada, South America, Memphis, Pittsburgh, Richmond, San Francisco, and Seattle.<sup>17</sup> With orders from across the country, as well as Europe and South America, “business with the company [continued] to be very good. Their special line of engraved work of the highest efficiency, with quality first, was given them a noted reputation in the trade all over the world.”<sup>18</sup>

Shortly after construction, and likely as a way of generating revenue before the full interior square footage was needed by the growing company, portions of the floor plate were rented by wholly separate companies.

Rented in 10,000 square foot sections – approximately one-half of the floor plate –, the space was occupied by a range of manufacturing concerns, including the Fox Motor Company, who occupied part of the 3<sup>rd</sup> floor in 1914; the Budd Wheel Corporation, who occupied part of the 6<sup>th</sup> floor in 1916; T.P. McCutcheon and Bro. Inc., knitting manufacturers, in 1916; Nickels and Laurer in 1917; and Rosenau Brothers in 1919. As there is no evidence of additional tenants in the building after 1919, it is likely to assume that the subject company occupied the entire space from then on out.

In 1916, the company had 240 employees. Ernest A. Wright, Jr. was President and C.P. Wright, a cousin, was also a Director. In 1920, the company experienced considerable growth, as the New York

---

<sup>15</sup> “Home of the Wright Quality Greeting Cards.” *Geyer’s Stationer* (6 January 1916): 26; “E.A. Wright Bank Note Co.’s New Line.” *Geyer’s Stationer and Printer* (25 September 1915): 78.

<sup>16</sup> “A New Line of Greeting Cards.” *Geyer’s Stationer* (6 May 1913): 56.

<sup>17</sup> *Philadelphia and Popular Philadelphians*, 230.; “Returned from Extensive Business Trip.” *The Printing Trade News* (12 May 1914): 44. These offices were responsible for sales only. All design, production, storage and shipping originated from the N. Broad Street facility.

<sup>18</sup> “Returned from Extensive Business Trip.”

E.A. Wright Bank Note Company Building

Name of Property

Philadelphia, PA

County and State

Stock Exchange authorized it to print stock certificates for its company.<sup>19</sup> With clients bearing such names as General Motors and R.G. Reynolds, the company had fully established itself as a notable “U.S. security printing firm.”<sup>20</sup> In that year, the company also printed 478,300 bond certificates for the Republic of Ireland.<sup>21</sup>

In a 1924 advertisement, the company referred to themselves as “Bank Note and General Engravers. Printers, Lithographers and Stationers.”<sup>22</sup> In 1925, the company had 264 employees, making it the largest of its kind in Philadelphia.<sup>23</sup> The following year, Wright, Jr.’s son Thomas joined the company and his second son, Ernest A. Wright III, joined two years later.

By 1933, the company had at least 70% of the diploma printing business in the country, “making it one of the more important aspects of the company.”<sup>24</sup> This was a trend that continued through the early 1960s without substantial decline.<sup>25</sup> In 1941 and throughout the war, French officials commissioned the company to print paper money for five French colonies. In its entire history these would be the only bank notes printed by the company.<sup>26</sup> In 1945, Wright II was promoted to Chairman of the Board and Wright III was made president of the company.

In April 1962, the prominent Minnesota publisher, Jostens, purchased the entire company, which was then referred to as “engravers of diplomas, stock certificates, bonds, stamps and documents.”<sup>27</sup> Although the company continued to operate as a wholly owned subsidiary with no management changes or changes to product type or output, this was a significant shift from family-owned business to national company. In 1965, Jostens sold the security printing business to Thomas de la Rue, who operated the Federated Bank Note Company.<sup>28</sup> Ernest A. Wright II also died that year.<sup>29</sup>

---

<sup>19</sup> “E.A. Wright Engraver’s Trade Card.” *The Essay Proof Journal* 43:1 (First Quarter 1986): 21.

<sup>20</sup> “E.A. Wright Engraver’s Trade Card.”

<sup>21</sup> “The E.A. Wright Bank Note Company.” *Philadelphia Register of Historical Places* (2019): 27.

<sup>22</sup> Advertisement, 1924. A bank note is a promissory note stating that a given bank will pay the allocated sum on demand.

<sup>23</sup> *Fifth Industrial Directory of the Commonwealth of Pennsylvania* (Harrisburg, PA: Commonwealth of Pennsylvania): 460.

<sup>24</sup> Fred Schwan, *The Paper Money of the E.A. Wright Company* (BNR Press, Camden, SC, 1978): 2.

<sup>25</sup> “The E.A. Wright Bank Note Company,” 28. In a 1963 article, the firm is noted as beating out competitors from both Chicago and Minnesota for the contracts for diplomas in Hazelton, PA. “No New Hike, Teachers Told.” *The Times-Tribune* (24 December 1963): 14.

<sup>26</sup> Schwan, 2.

<sup>27</sup> “Jostens Acquires Wright Concerns.” *The Philadelphia Inquirer* (25 April 1962): 37. Jostens is perhaps best known today as a yearbook publisher.

<sup>28</sup> Schwan, 2. De la Rue ultimately sold the assets to the Security Columbian Bank Note Company.

<sup>29</sup> “Ernest A. Wright, Jr.” *The Philadelphia Inquirer* (18 April 1965): 40.

E.A. Wright Bank Note Company Building

Name of Property

Philadelphia, PA

County and State

In 1967, the building was purchased by the United Cerebral Palsy Association for \$226,000 for use as its administrative headquarters.<sup>30</sup> Although Jostens continued to occupy a floor of sales and administrative space until 1970, the entire operation was ultimately moved to northeast Philadelphia. The E.A. Wright name was no longer used by Jostens after they vacated the subject property. American Rubber & Metal, Inc. currently occupies a small space on the 2<sup>nd</sup> floor of the building, but it is not known when they began their operation. The remainder of the building is currently vacant.

### **Criterion A, Significance in Industry**

#### *The Printing and Engraving Process*

Although there is no known documentation on precisely how the building operated, the function of an engraving plant was largely standardized. At a minimum, any factory would need basic manufacturing facilities, including a hand stamping press, a plate printing press, engravers tools, and inks and bronzes, as well as whiting and wiping pads. The business side of the company would also need to be incorporated, including warehousing, shipping, design spaces and administration.

In general, the manufacturing process at this kind of printing company was divided into two general categories: the engraving of the plate and the printing of the plate on to paper. In engraving, you can either use a steel or a copper plate. The former was used for longer runs of up to 100,000 where bulk printing was required.<sup>31</sup> It was also typically reserved for the “finest grades” of work including certificates, diplomas, business letterheads, stamps or currency.<sup>32</sup> The latter was used for shorter runs of about 2,000 and was consequently a much cheaper process. It would be used for wedding invitations, greeting cards, menu cards and graduation programs.

For either type of plate, the process was largely the same. A line drawing is made with the greatest possible level of detail, either with line, lettering or both. A gelatin sheet is then laid over the final drawing and the drawing was transferred in intaglio with a steel pointed instrument (Figure #6).<sup>33</sup> The gelatin is then powdered with vermilion, which settles into the lines. Then, the sheet is laid on a waxed plate and rubbed so that the vermilion transfers. An acid-proof substance is then applied to a blank surface of the plate, followed by acid to the vermilion. The length of time that the acid remains corresponds to the depth of the line. In the case of a steel plate, the plate is then placed in a cyanide bath to harden it. Either type of plate could also be placed in a hardening furnace to further fix the line. Although the exact heat source for this is not known, it is likely to assume that it was generated by the significant boilers in the basement.

---

<sup>30</sup> “Real Estate News.” *The Philadelphia Inquirer* (21 February 1968): 33.

<sup>31</sup> After a certain number of runs, the steel plate would begin to show wear and the lines wouldn’t be as sharp.

<sup>32</sup> Salade, 1.

<sup>33</sup> Intaglio is the process of engraving a design.

E.A. Wright Bank Note Company Building

Name of Property

Philadelphia, PA

County and State

Once the plates were engraved, they could be used to print the graphic on to paper. In general, two types of printing presses were used. The first uses a roller press (Figure #7). Ink is applied to the plate with a roller and any superfluous ink is wiped off. The plates are then laid or glued to the plank of the press and paper is laid on top of the plates. The plate and the sheet then are passed under the steel cylinders and the printing is complete. The second is a stamping machine, which produced an embossed effect, such as would be wanted on personal stationery or seals. Ink was applied to the plate with a brush, as the lines were particularly deep, and again wiped off, leaving the flush part of the plate as a clean surface. The plate and sheet were then placed on the machine and the machine is pressed close.

Although the extent of the machinery operated by the E.A. Wright Company is not known, period advertisements for machinery manufacturers proudly listed the company on their client lists, clearly indicating that theirs was a prominent name. One was the Gould and Eberhardt Company, manufacturers of metal working machinery, who sold the Wright company steel plate transfer presses and various machines for the Auto Falcon and Waite Die Press Company, including three 6x10 die and plate presses.<sup>34</sup> Much of this machinery was relocated from 1108 Chestnut Street when the company moved to their new N. Broad Street location in 1914.

The E.A. Wright Company was involved in the entire manufacturing process from beginning to end, including designing and engraving the plates in house. In smaller firms, it was typical for the engraving to be outsourced, as it was the most expensive and technical part of the process, and it would only be the actual printing that was done in-house.<sup>35</sup> There was no notable change to the manufacturing process during the company's time in the building.

#### *The Products of the E.A. Wright Bank Note Company*

From the time that the company was founded, it produced an extraordinary range of printed items, from books and reports to invitations and stationery, from official currency and stock certificates to stamps and calendars (Figure #8).<sup>36</sup> Using the marketing slogan "Wright Quality, Excelled by None," the company was known for achieving a "high degree of artistic decoration through the employment of many exclusive designs. Nearly all [of which] are provided with space for family crests or monograms."<sup>37</sup>

---

<sup>34</sup> Advertisement, 1912.

<sup>35</sup> Salade, 18.

<sup>36</sup> This range of items is documented in period advertisements, trader journals and the published items themselves.

<sup>37</sup> "E.A. Wright Bank Note Co.'s New Line."

E.A. Wright Bank Note Company Building

Name of Property

Philadelphia, PA

County and State

Once at the subject property, the company continued their previous scope of production, with the exception of manuscript printing, but expanded into what was presumably a more lucrative niche, which included the printing of bank notes, stamps, and stock and bond certificates.<sup>38</sup>

Bank notes were a specific area of specialty for the company and one that required a very high level of expertise. The only currency notes ever printed by the company began in 1941 but the company was nonetheless extremely well known for their work in this field (Figure #9).<sup>39</sup> Totaling twenty-one notes for different countries, the company ultimately printed currency for French Guiana, French West Africa, Guadeloupe, Martinique and Morocco. The company continued printing these notes until 1965.

One of the more unusual products of the company were both commemorative and official postage stamps.<sup>40</sup> Although the E.A. Wright Company manufactured some stamps in the 1930s, the bulk of them were manufactured after World War II and until the operation closed. These included commemorative stamps for Ghana and postage stamps for Liberia, Suriname, Panama, Nicaragua, Liberia, Indonesia, Haiti, and Guinea (Figure #10).<sup>41</sup>

A list showing the range of items printed between 1916 and 1924 includes annual reports and yearbooks for schools such as the Widener Memorial School for Crippled Children and the University of Pennsylvania; diplomas for Temple University, Hahnemann Medical School, Muhlenberg College, U.S. Military College at West Point, Tulane University, Yale University, Columbia, University, University of Michigan, and Lafayette College; engraved visiting cards; wedding invitations; dance programs; menus; college, fraternity and seminary invitations, catalogs and programs; envelopes; bond and stock certificate blanks; card cases and holders; hotel, business and personal stationery; greeting cards; folders; and art calendars.<sup>42</sup> The calendars often displayed either reproductions of “celebrated paintings” (Figure #11) or from nature photographs originally taken by E. A. Wright himself.<sup>43</sup>

---

<sup>38</sup> While located at its previous space on Chestnut Street, the company had a large business in producing private printing runs. A selection of these includes *Work of the Colored Law and Order League* (1908); *The Negro and the ‘Solid South’* by Booker T. Washington (1909); *Public Taxation and Negro Schools* (1910); and *Some Examples in Self-Help and Success Among Colored People and of Co-Operation and Cordial Relations between the Races in America* (1910). Although there is no information regarding Wright’s personal beliefs, his choice of work clearly speaks for itself. This type of work decreased in the new location. There is no explanation as to why.

<sup>39</sup> “E.A. Wright Engraver’s Trade Card.”

<sup>40</sup> Commemorative stamps have no value but are just used for collective purposes.

<sup>41</sup> “Ernest A. Wright, 3<sup>rd</sup>.” *The Philadelphia Inquirer* (8 February 1958): 1; “E.A. Wright Engraver’s Trade Card.”

<sup>42</sup> *Philadelphia and Popular Philadelphians*, 230; A. Geyer, *Who Makes It and Where: The Stationer’s Book of Knowledge, 1916-1917* (1917): 47; “Home of the Wright Quality Greeting Cards”; “The E.A. Wright Bank Note Company,” 31; Advertisement, 1924.

<sup>43</sup> *Philadelphia and Popular Philadelphians*, 230; “E.A. Wright Bank Note Co.’s New Line.”

E.A. Wright Bank Note Company Building

Name of Property

Philadelphia, PA

County and State

Other miscellaneous commissions include engraved tickets for the 1952 Democratic National Convention, and bond certificates for the cities of Hazelton, PA, in 1956 and Allentown, PA, in 1961.

### *William Steele and Sons*

William Steele (1841-1908) emigrated from Scotland and founded William Steele and Son in 1880 with his son, Joseph. After building Philadelphia's first skyscraper, the Witherspoon Building (1897), his other son, John, joined the firm in 1900. It was then renamed William Steele and Sons. By 1929, the company was "one of the largest design-build firms in the country" and it offered a comprehensive approach, including design, engineering, civil engineering, mechanical engineering, fire protection, and construction services.<sup>44</sup> This comprehensive notion was termed "The Steele Idea" and it resulted in an enormous output of buildings and types, including hospitals, office buildings, and factories.<sup>45</sup>

One constant throughout their portfolio was the use of fireproof, reinforced concrete flat-slab construction, which allowed for taller buildings with larger floors that could carry heavier loads while increasing the distance between columns, thereby increasing the usable floor space.<sup>46</sup>

Reinforced concrete was a novel concept at the end of the 19<sup>th</sup> century, combining the strengths of steel and concrete. Steel beams were available in the 1870s, but they were commonly used as columns in conjunction with wood or masonry floor construction. At the end of the 19<sup>th</sup> century, the concept of using a reinforced concrete construction system with iron bars set directly into the wet concrete was developed by various independent engineers throughout the country and abroad. The advanced reinforced concrete system, which was applied to both the roof and floor plates, as well as the columns, allowed for increased weight stresses, and the resulting buildings were taller, contained larger floor areas with a minimum of structural columns that provided more useable floor area. The buildings were also inherently fireproof, ideal for the warehousing function of the subject property.

During the first decade of the 20<sup>th</sup> century, reinforcing technologies greatly expanded the use of concrete in the design of American buildings.<sup>47</sup> Two methods of reinforced concrete construction were specified by builders and architects during the early 20<sup>th</sup> century: the "beam-and-girder" method that

---

<sup>44</sup> "The Harris Building." *National Register Nomination* (2001): 8:2.

<sup>45</sup> "Steel Heddle Manufacturing Company Complex." *National Register Nomination* (2010): 8:9.

<sup>46</sup> As noted in the Harris NRN, "Reinforced concrete was a novel concept at the end of the nineteenth century, combining the strengths of steel and concrete. Steel beams were available in the 1870s, but until the end of the nineteenth century, steel was commonly used as columns in conjunction with wood or masonry floor construction. The reinforced concrete construction system utilized iron bars set into the concrete that allowed for increased weight stresses." For additional information on the company, see "The Harris Building."

<sup>47</sup> Amy E. Slaton, *Reinforced Concrete and the Modernization of American Building, 1900-1930* (New York: Johns Hopkins University Press, 2001): 16.

E.A. Wright Bank Note Company Building

Name of Property

Philadelphia, PA

County and State

closely followed timber frame style construction with concrete columns, concrete girders and concrete slab floors; and the “flat-slab” method which relied on angled or mushroom-shaped capital columns that eliminated the need for girders and beams.<sup>48</sup>

The EA Wright building follows the flat-slab method, which is particularly evident with the use of the “drophead-flat plate slab” capital, which consisted of a plinth-like slab supported by a funnel-shaped concrete capital that rested upon the column.<sup>49</sup> Other typical interior characteristics include, regularly spaced industrial steel windows; open floor plans with exposed concrete surfaces; widely spaced columns to maximize interior square footage, and multi-story construction.

William Steele and Sons constructed numerous other reinforced concrete factories in Philadelphia, including the Drueding Brothers Company Building (1907, NR 2012), N. Snellenberg and Company Warehouse (1914, NR 2003), the Steel Heddle Manufacturing Company Complex (1919, NR 2010), the Quaker City Dye Works (1919, NR 2013), and the Terminal Commerce Building (1929, NR 1996). A 1920 advertisement for the company lists the EA Wright property, as well as other local buildings including the Electric Storage Battery Co., the Keystone Leather Co., the Steel Heddle Manufacturing Co., and the Drueding Brothers Building.

In 1936, subsequent to a significant downturn in business primarily caused by the Depression, the company closed.

*Comparables*

Understanding how the subject property fits into the larger printing industry in Philadelphia in the early to mid-20<sup>th</sup> century is challenging because of the nuances of the industry itself. Printing is a broad category, not only categorized by the type of item produced but also the way in which it was produced. In the late 19<sup>th</sup> and early 20<sup>th</sup> centuries, Philadelphia had nearly 1,000 printing firms. They ranged in size from one or two individuals to hundreds of employees and ranged in product type from newspapers and portraits to United States currency and bus tickets. The process also varied by company, with the smaller companies outsourcing aspects, such as engraving, while the larger ones were more comprehensive.

The E.A. Wright Bank Note Co., for example, is repeatedly listed as specializing in “bank note engraving, lithographing and plate printing,” which was an unusually broad combination.<sup>50</sup> As such, it

---

<sup>48</sup> Slaton, 134.

<sup>49</sup> Leon Clemmer, "William Steele & Sons Company History," an unpublished document (Jenkintown, PA, 1996), 332-334.

<sup>50</sup> *Annual Report of the Factory Inspector for the Commonwealth of Pennsylvania, Volume 5* (Harrisburg, PA:

E.A. Wright Bank Note Company Building

Name of Property

Philadelphia, PA

County and State

is not possible to find another company that matches the subject property in scale, product line and method.

Shortly after the company moved into the N. Broad Street building in 1914, it had 199 employees. Two companies of the same scale at that time were the Beck Engraving Co., Inc and the Charles H. Elliott Co.. The Beck Engraving Co., Inc was located at N. 7<sup>th</sup> and Sansom Streets (extant), in a portion of a larger building and had 220 employees at that time. The Charles H. Elliott Co. was located at N. 17<sup>th</sup> Street and Lehigh Avenue (demolished), and had 200 employees at that time.<sup>51</sup> However, the Beck Engraving Co. Inc. exclusively did photo-engraving, and the Charles H. Elliott Co. primarily focused on jewelry engraving, such as class rings.

Over the next decade, the three companies continued to operate on roughly the same scale.<sup>52</sup> From that time onward, while the other companies decreased in size, the E.A Wright Bank Note Company continued to be the largest firm of its type in its field, supplying a consistent but specific line of products.

---

Clarence M. Busch, 1895): 183.

<sup>51</sup> *Second Industrial Directory of Pennsylvania* (Harrisburg, PA: Wm. Stanley Ray, 1917): 287.

<sup>52</sup> *Industrial Directory of Pennsylvania* (Harrisburg, PA: Wm. Stanley Ray, 1926): 459.

E.A. Wright Bank Note Company Building

Name of Property

Philadelphia, PA

County and State

## 9. Major Bibliographical References

"Advertisement." *Geyer's Stationery* 61 (1916): 28.

"A New Line of Greeting Cards." *Geyer's Stationer* (6 May 1913): 56

*Annual Report of the Factory Inspector for the Commonwealth of Pennsylvania, Volume 5.* Harrisburg, PA: Clarence M. Busch, 1895. 183.

*Annual Report of the Factory Inspector of the Commonwealth of Pennsylvania.* Harrisburg, PA: Harrisburg Publishing Co., 1905.

Clemmer, Leon . "William Steele & Sons Company History," an unpublished document. Jenkintown, PA, 1996.

"Death of E.A. Wright." *Walden's Stationer and Printer* 35:1 (1912): 14.

"Charter – E.A. Wright Bank Note Company." Issued 30 May 1906.

"The E.A. Wright Bank Note Company." *Philadelphia Register of Historical Places* (2019): 27.

"E.A. Wright Bank Note Co.'s New Line." *Geyer's Stationer and Printer* (25 September 1915): 78.

"E.A. Wright Engraver's Trade Card." *The Essay Proof Journal* 43:1 (First Quarter 1986): 21.

"Ernest A. Wright" *The Philadelphia Inquirer* (1 June 1912): 13.

"Ernest A. Wright, Jr." *The Philadelphia Inquirer* (18 April 1965): 40.

"Ernest A. Wright, 3<sup>rd</sup>." *The Philadelphia Inquirer* (8 February 1958): 1.

*Fifth Industrial Directory of the Commonwealth of Pennsylvania.* Harrisburg, PA: Commonwealth of Pennsylvania.

Geyer, A. *Who Makes It and Where: The Stationer's Book of Knowledge, 1916-1917.* 1917.

"The Harris Building (Philadelphia County, PA)." *National Register Nomination.* 2001.

"Home of the Wright Quality Greeting Cards." *Geyer's Stationer* (6 January 1916): 26.

E.A. Wright Bank Note Company Building

Name of Property

Philadelphia, PA

County and State

*Industrial Directory of Pennsylvania*. Harrisburg, PA: Wm. Stanley Ray, 1926.

“Jostens Acquires Wright Concerns.” *The Philadelphia Inquirer* (25 April 1962): 37.

“New Construction.” *Philadelphia Real Estate Record and Builders’ Guide* 28 (13 August 1913): 531.

“No New Hike, Teachers Told.” *The Times-Tribune* (24 December 1963): 14.

*Philadelphia and Popular Philadelphians* (Philadelphia, PA: The North American, 1891): 230.

“The Printing Industry in Philadelphia.” *Printing Trade News* 42 (1912): 43

“Real Estate News.” *The Philadelphia Inquirer* (21 February 1968): 33.

“Returned from Extensive Business Trip.” *The Printing Trade News* (12 May 1914): 44.

Schwan, Fred. *The Paper Money of the E.A. Wright Company*. BNR Press, Camden, SC, 1978.

*Second Industrial Directory of Pennsylvania*. Harrisburg, PA: Wm. Stanley Ray, 1917.

Slaton, Amy E. *Reinforced Concrete and the Modernization of American Building, 1900-1930*. New York: Johns Hopkins University Press, 2001.

“Steel Heddle Manufacturing Company Complex (Philadelphia County, PA).” *National Register Nomination*. 2010.

*Terra Cotta Details: Conkling-Armstrong Terra Cotta Co., Philadelphia*. Philadelphia, PA: The Philadelphia Co., 1914.

---

**Previous documentation on file (NPS):**

preliminary determination of individual listing (36 CFR 67) has been requested

previously listed in the National Register

previously determined eligible by the National Register

designated a National Historic Landmark

recorded by Historic American Buildings Survey #

recorded by Historic American Engineering Record #

recorded by Historic American Landscape Survey #

E.A. Wright Bank Note Company Building

Name of Property

Philadelphia, PA

County and State

**Primary location of additional data:**

State Historic Preservation Office

Other State agency

Federal agency

Local government

University

Other:

**Historic Resources Survey Number (if assigned):** N/A

---

**Geographical Data**

**Acreage of Property** less than 1 acre

**Latitude/Longitude Coordinates**

Datum if other than WGS84: \_\_\_\_\_

[Need coordinates]

**Verbal Boundary Description**

The nominated property corresponds to the footprint of the building and includes the low concrete wall on the north and east sides of the building, as presented in Figure 15, Site Plan with NR Boundary.

**Boundary Justification**

The boundary includes all resources and land associated with the E.A. Wright Company Building and does not exclude any known buildings, structures, or acreage. The concrete wall that encloses the access/loading area on the north side of the building is included within the boundary. The public sidewalk on the west side of the property is not included. The building abutting the south elevation of the Wright building is not included within the boundary as it had no historic and/or functional relationship to the property.

---

**10. Form Prepared By**

name/title: Logan I. Ferguson, Senior Associate

organization: Powers & Company, Inc.

street & number: 1315 Walnut Street, Suite 1717

city or town: Philadelphia

state: PA

zip code: 19107

e-mail: logan@powersco.net

telephone: (215) 636-0192

date: December 2021

---

**Additional Documentation**

Submit the following items with the completed form:

- **Maps:** A **USGS map** or equivalent (7.5 or 15 minute series) indicating the property's location.
- **Sketch map** for historic districts and properties having large acreage or numerous resources. Key all photographs to this map.
- **Additional items:** (Check with the SHPO, TPO, or FPO for any additional items.)

E.A. Wright Bank Note Company Building

Name of Property

Philadelphia, PA

County and State

### Photograph Log

Name of Property: E.A. Wright Bank Note Company Building

City or Vicinity: Philadelphia County: Philadelphia

State: PA

Photographer: Robert Powers, Powers and Company, Inc.

Date Photographed: May 2021

<i>Photograph #</i>	<i>Description of Photograph</i>
1.	West elevation, view east
2.	West elevation, Entrance detail, view east
3.	West elevation, Entrance detail, view east
4.	West elevation, Storefront detail, view east
5.	West and south elevations, view northeast
6.	East elevation, view southwest
7.	East and north elevations, view southwest
8.	North and west elevations, view southeast
9.	1 <sup>st</sup> floor, view east
10.	1 <sup>st</sup> floor, view east
11.	2 <sup>nd</sup> floor, view west
12.	2 <sup>nd</sup> floor, view east
13.	2 <sup>nd</sup> floor, Stairway, view west
14.	3 <sup>rd</sup> floor, view east
15.	3 <sup>rd</sup> floor, Stairway, view east
16.	3 <sup>rd</sup> floor, view west
17.	4 <sup>th</sup> floor, view south
18.	4 <sup>th</sup> floor, Elevator, view north
19.	4 <sup>th</sup> floor, view west
20.	5 <sup>th</sup> floor, view east
21.	5 <sup>th</sup> floor, view west
22.	6 <sup>th</sup> floor, view east
23.	6 <sup>th</sup> floor, view west
24.	6 <sup>th</sup> floor, view east

E.A. Wright Bank Note Company Building  
Name of Property

Philadelphia, PA  
County and State



**Photograph 1** – West elevation, view east

E.A. Wright Bank Note Company Building  
Name of Property

Philadelphia, PA  
County and State



**Photograph 2** – West elevation, Entrance detail, view east. Note the terra cotta detailing by the Conkling Armstrong Terra Cotta Company. The southern (right) bay was originally a window opening with a terra cotta sill. It was lowered in the mid- to late 20<sup>th</sup> century for reasons unknown.

E.A. Wright Bank Note Company Building  
Name of Property

Philadelphia, PA  
County and State



**Photograph 3** – West elevation, Entrance detail, view east. Note the terra cotta detailing by the Conkling Armstrong Terra Cotta Company.

E.A. Wright Bank Note Company Building  
Name of Property

Philadelphia, PA  
County and State



**Photograph 4** – West elevation, Storefront detail, view east. Note the terra cotta detailing by the Conkling Armstrong Terra Cotta Company. The bay original contained a window.

E.A. Wright Bank Note Company Building  
Name of Property

Philadelphia, PA  
County and State



**Photograph 5** – West and south elevations, view northeast

E.A. Wright Bank Note Company Building  
Name of Property

Philadelphia, PA  
County and State



**Photograph 6 – East elevation, view southwest**

E.A. Wright Bank Note Company Building  
Name of Property

Philadelphia, PA  
County and State



**Photograph 7** – East and north elevations, view southwest. Note the tan brick chimney with brown brick lettering reading “WRIGHT.”

E.A. Wright Bank Note Company Building  
Name of Property

Philadelphia, PA  
County and State



**Photograph 8** – North and west elevations, view southeast

E.A. Wright Bank Note Company Building  
Name of Property

Philadelphia, PA  
County and State



**Photograph 9 – 1st floor, view east**

E.A. Wright Bank Note Company Building  
Name of Property

Philadelphia, PA  
County and State



**Photograph 10 – 1st floor, view east**

E.A. Wright Bank Note Company Building  
Name of Property

Philadelphia, PA  
County and State



**Photograph 11** – 2nd floor, view west

E.A. Wright Bank Note Company Building  
Name of Property

Philadelphia, PA  
County and State



**Photograph 12 – 2nd floor, view east**

E.A. Wright Bank Note Company Building  
Name of Property

Philadelphia, PA  
County and State



**Photograph 13** – 2nd floor, Stairway, view west

E.A. Wright Bank Note Company Building  
Name of Property

Philadelphia, PA  
County and State



**Photograph 14** – 3rd floor, view east

E.A. Wright Bank Note Company Building  
Name of Property

Philadelphia, PA  
County and State



**Photograph 15** – 3rd floor, Stairway, view east

E.A. Wright Bank Note Company Building  
Name of Property

Philadelphia, PA  
County and State



**Photograph 16** – 3rd floor, view west

E.A. Wright Bank Note Company Building  
Name of Property

Philadelphia, PA  
County and State



**Photograph 17** – 4th floor, view south

E.A. Wright Bank Note Company Building  
Name of Property

Philadelphia, PA  
County and State



**Photograph 18** – 4th floor, Elevator, view north

E.A. Wright Bank Note Company Building  
Name of Property

Philadelphia, PA  
County and State



**Photograph 19** – 4th floor, view west

E.A. Wright Bank Note Company Building  
Name of Property

Philadelphia, PA  
County and State



**Photograph 20 – 5th floor, view east**

E.A. Wright Bank Note Company Building  
Name of Property

Philadelphia, PA  
County and State



**Photograph 21** – 5th floor, view west

E.A. Wright Bank Note Company Building  
Name of Property

Philadelphia, PA  
County and State



**Photograph 22 – 6th floor, view east**

E.A. Wright Bank Note Company Building  
Name of Property

Philadelphia, PA  
County and State



**Photograph 23** – 6th floor, view west

E.A. Wright Bank Note Company Building  
Name of Property

Philadelphia, PA  
County and State



**Photograph 24** – 6th floor, view east

E.A. Wright Bank Note Company Building  
Name of Property

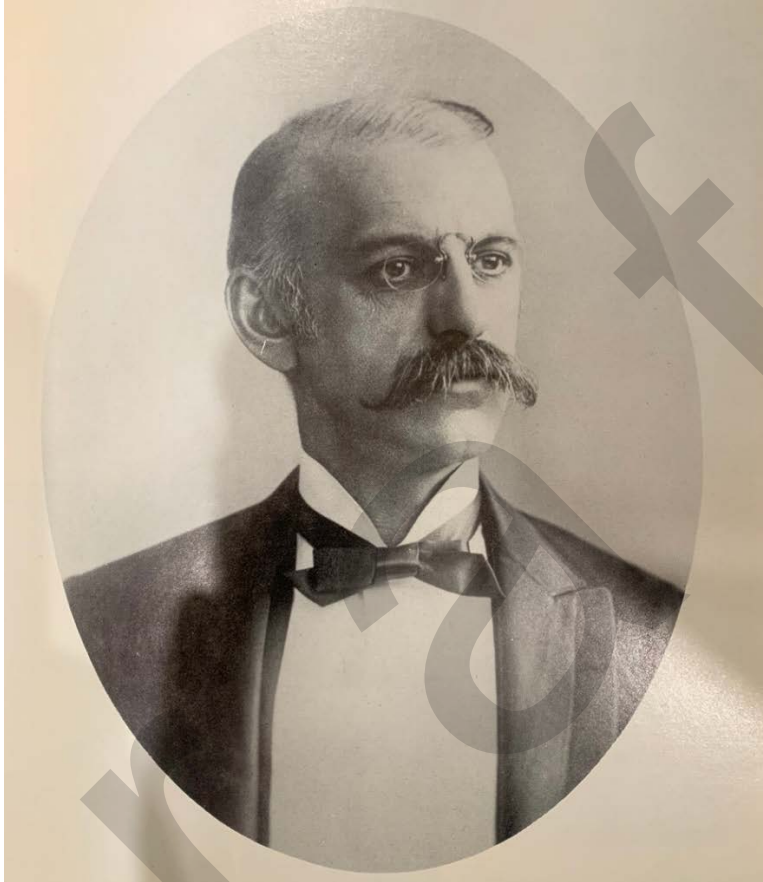
Philadelphia, PA  
County and State

**Index of Figures:**

<i>Figure #</i>	<i>Description of Figure</i>
1.	“Ernest A. Wright.” Fred Schwan, <i>The Paper Money of the E.A. Wright Company</i> (BNR Press, Camden, SC, 1978): 1.
2.	Sanborn Fire Insurance Map, 1917.
3.	Advertisement, 1915.
4.	Terra cotta detail of the E.A. Wright Bank Note Company by the Conkling Armstrong Terra Cotta Company.
5.	Advertisement, 1917.
6.	“Engraving Machine.” Robert F. Salade, <i>Plate Printing and Die Stamping</i> (New York: Oswald Publishing Company, 1917): 15.
7.	“Steelplate or Copperplate Printing Press.” Robert F. Salade, <i>Plate Printing and Die Stamping</i> (New York: Oswald Publishing Company, 1917): 20.
8.	Company letterhead, 1952.
9.	Currency from French Guyana and Morocco. Fred Schwan, <i>The Paper Money of the E.A. Wright Company</i> (BNR Press, Camden, SC, 1978): 11 and 30.
10.	Stamps from Guinea and Liberia. <a href="https://www.lastdodo.com/en/areas/2488977-e-a-wright-bank-note-co-phil">https://www.lastdodo.com/en/areas/2488977-e-a-wright-bank-note-co-phil</a> . Accessed on May 12, 2021.
11.	“Three of a Kind.” <a href="https://www.ebay.com/itm/274485975435?hash=item3fe8a3998b:g:c~0AAOSwAr1fSrC8">https://www.ebay.com/itm/274485975435?hash=item3fe8a3998b:g:c~0AAOSwAr1fSrC8</a> . Accessed on May 12, 2021.
12.	Aerial photograph, view east, 2021.
13.	Aerial photograph, view west, 2021.
14.	USGS Map.
15.	Site Plan with NR Boundary.
16.	Aerial Image (2021).
17.	Existing Site Plan with Photograph Key.
18.	Existing Basement Plan with Photograph Key.
19.	Existing 1 <sup>st</sup> Floor Plan with Photograph Key.
20.	Existing 2 <sup>nd</sup> Floor Plan with Photograph Key.
21.	Existing 3 <sup>rd</sup> Floor Plan with Photograph Key.
22.	Existing 4 <sup>th</sup> Floor Plan with Photograph Key.
23.	Existing 5 <sup>th</sup> Floor Plan with Photograph Key.
24.	Existing 6 <sup>th</sup> Floor Plan with Photograph Key.

E.A. Wright Bank Note Company Building  
Name of Property

Philadelphia, PA  
County and State



**Figure 1** – “Ernest A. Wright.” Fred Schwan, *The Paper Money of the E.A. Wright Company* (BNR Press, Camden, SC, 1978): 1.

E.A. Wright Bank Note Company Building  
Name of Property

Philadelphia, PA  
County and State

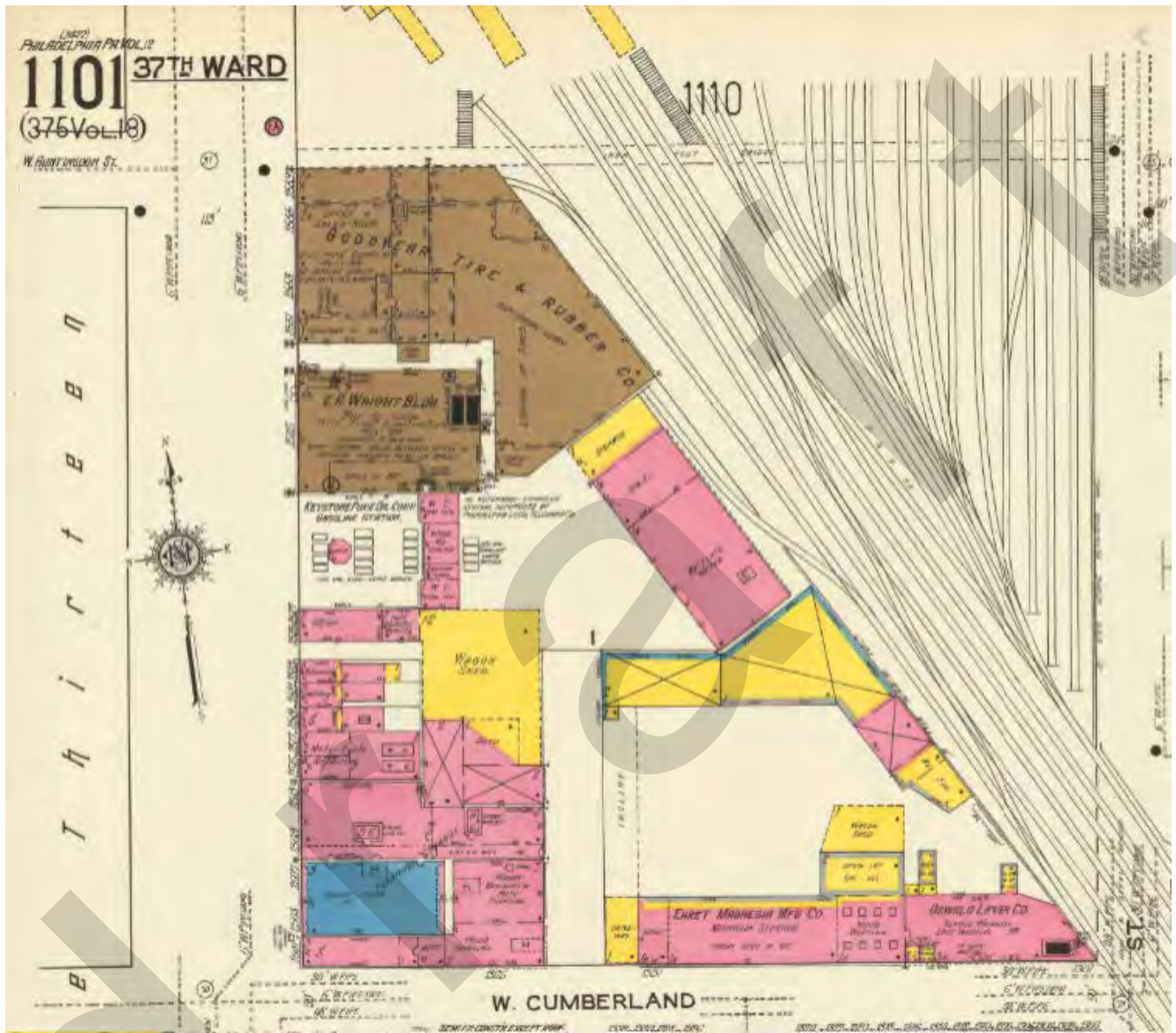


Figure 2 – Sanborn Fire Insurance Map, 1917.

E.A. Wright Bank Note Company Building  
Name of Property

Philadelphia, PA  
County and State



**E. A. WRIGHT BUILDING**  
**Broad and Huntingdon Streets, Philadelphia**  
**The largest and best equipped Engraving Plant in America**

**Figure 3** – “E.A. Wright Bank Note Co.’s New Line.” *Geyer’s Stationer and Printer* (25 September 1915):  
78.

E.A. Wright Bank Note Company Building  
Name of Property

Philadelphia, PA  
County and State



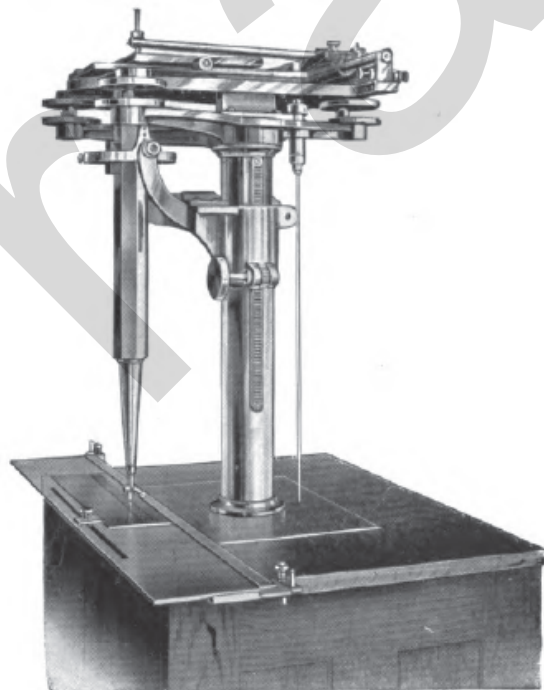
**Figure 4** – Terra cotta detail of the E.A. Wright Bank Note Company by the Conkling Armstrong Terra Cotta Company. A portion of the piece remains above the primary entrance on the west elevation. *Terra Cotta Details: Conkling-Armstrong Terra Cotta Co., Philadelphia* (Philadelphia, PA: The Philadelphia Co., 1914): 37.

E.A. Wright Bank Note Company Building  
Name of Property

Philadelphia, PA  
County and State



Figure 5 – “Advertisement.” *Geyer’s Stationery* 61 (1916): 28.

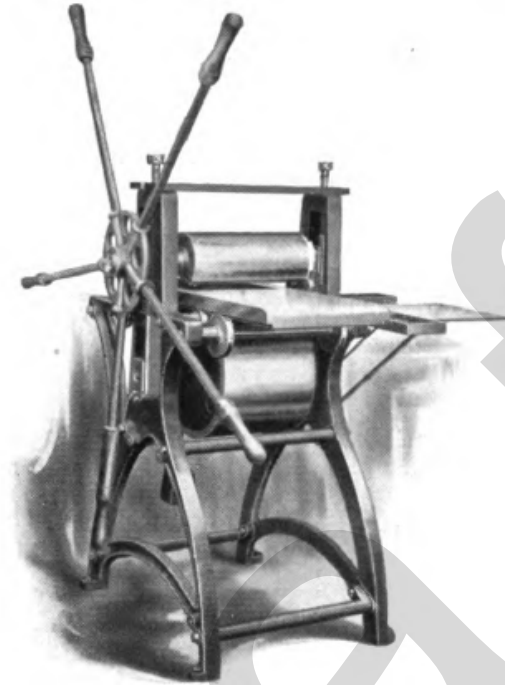


An engraving machine

Figure 6 – “Engraving Machine.” Robert F. Salade, *Plate Printing and Die Stamping* (New York: Oswald Publishing Company, 1917): 15. Note that these are not images of the exact machines used by the company.

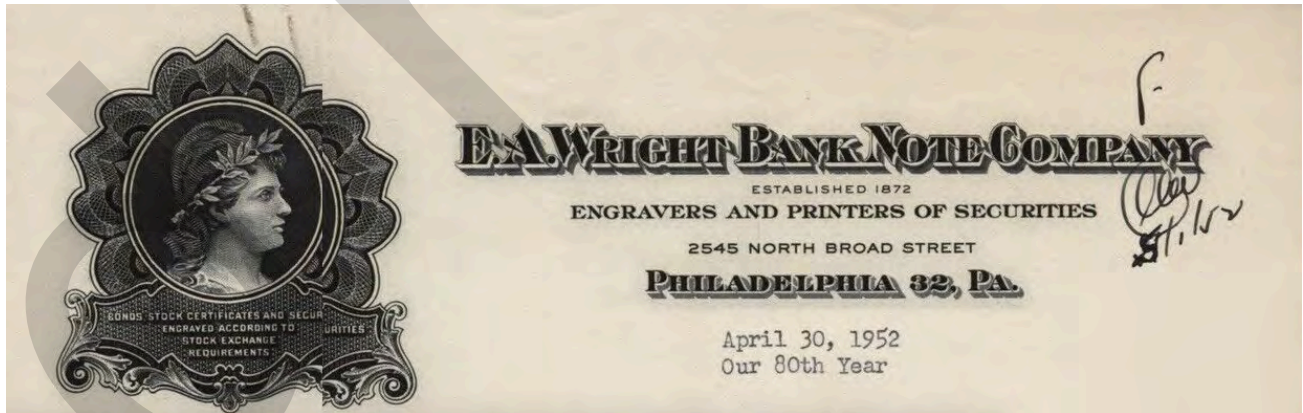
E.A. Wright Bank Note Company Building  
Name of Property

Philadelphia, PA  
County and State



**Steelplate or copperplate printing press**

**Figure 7** – “Steelplate or Copperplate Printing Press.” Robert F. Salade, Plate Printing and Die Stamping (New York: Oswald Publishing Company, 1917): 20. Note that these are not images of the exact machines used by the company.



**Figure 8** – Company letterhead, 1952.

E.A. Wright Bank Note Company Building  
Name of Property

Philadelphia, PA  
County and State



**Figure 9** – Currency from French Guyana (left) and Morocco (right). Fred Schwan, *The Paper Money of the E.A. Wright Company* (BNR Press, Camden, SC, 1978): 11 and 30. A description of the currency states that the left image was colored with black, yellow, violet and blue. The right was colored with black, brown, blue, green and yellow.

E.A. Wright Bank Note Company Building  
Name of Property

Philadelphia, PA  
County and State



**Figure 10** – Stamps from Guinea and Liberia, as manufactured by the E.A. Wright Bank Note Company. <https://www.lastdodo.com/en/areas/2488977-e-a-wright-bank-note-co-phila>. Accessed on May 12, 2021.

E.A. Wright Bank Note Company Building  
Name of Property

Philadelphia, PA  
County and State



**Figure 11** – “Three of a Kind,” as manufactured by the E.A. Wright Bank Note Company.  
<https://www.ebay.com/itm/274485975435?hash=item3fe8a3998b:g:c~0AAOSwAr1fSrC8>. Accessed on  
May 12, 2021.

E.A. Wright Bank Note Company Building  
Name of Property

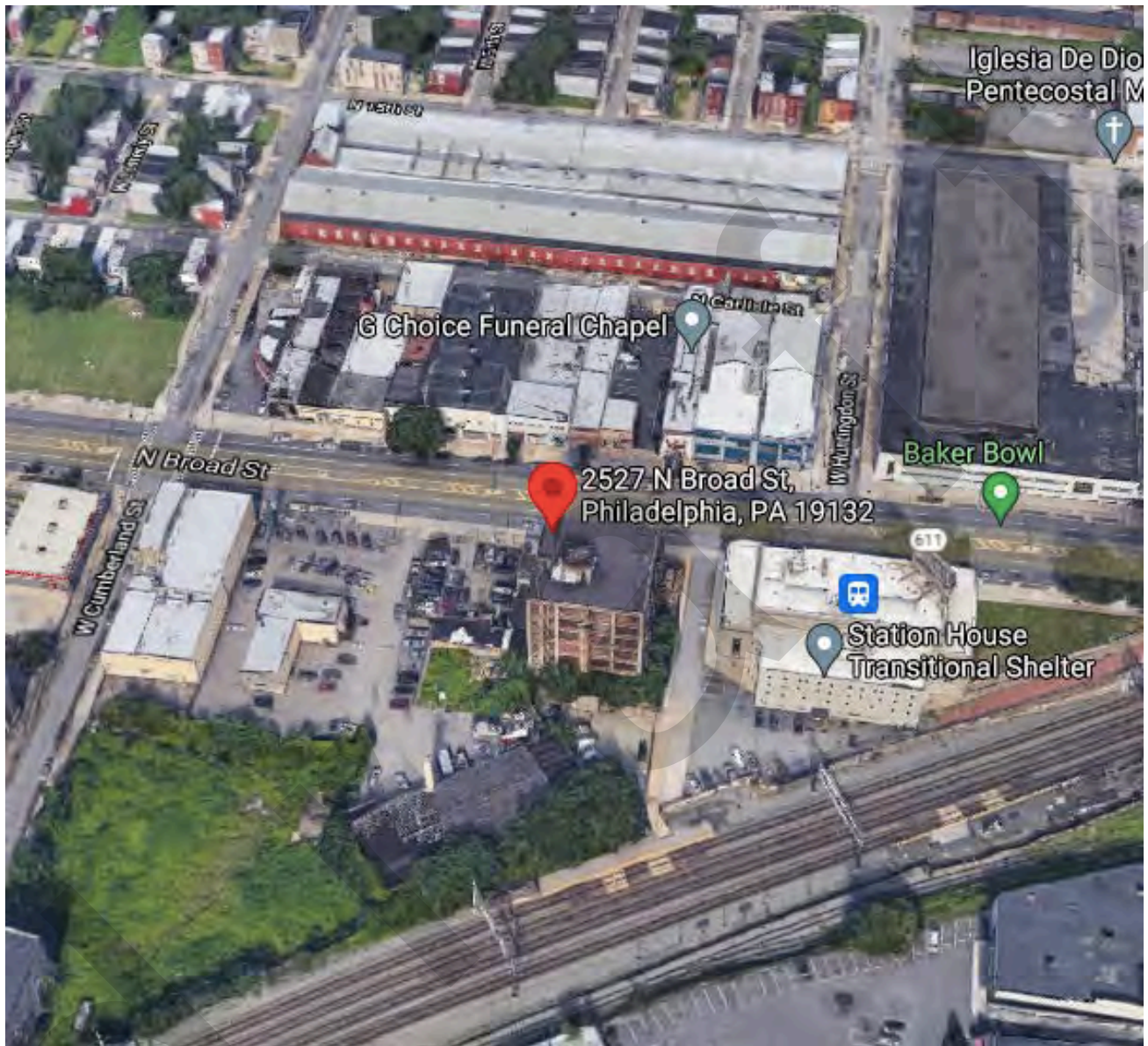
Philadelphia, PA  
County and State



**Figure 12** – Aerial photograph, view east, 2021. Directional north is at the left side of the image.

E.A. Wright Bank Note Company Building  
Name of Property

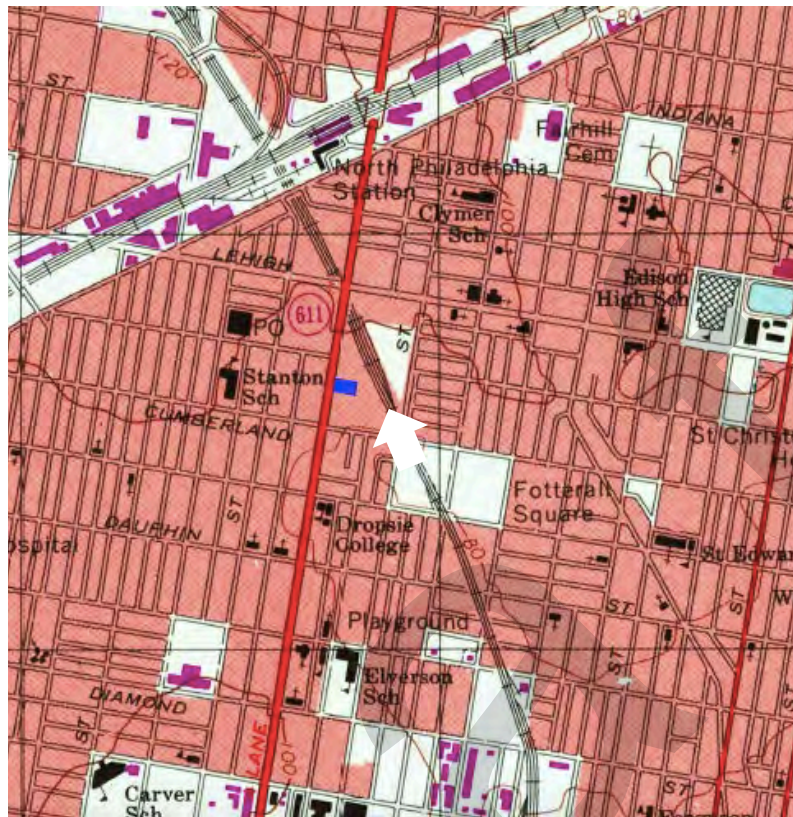
Philadelphia, PA  
County and State



**Figure 13** – Aerial photograph, view west, 2021. Directional north is at the right side of the image.

E.A. Wright Bank Note Company Building  
Name of Property

Philadelphia, PA  
County and State



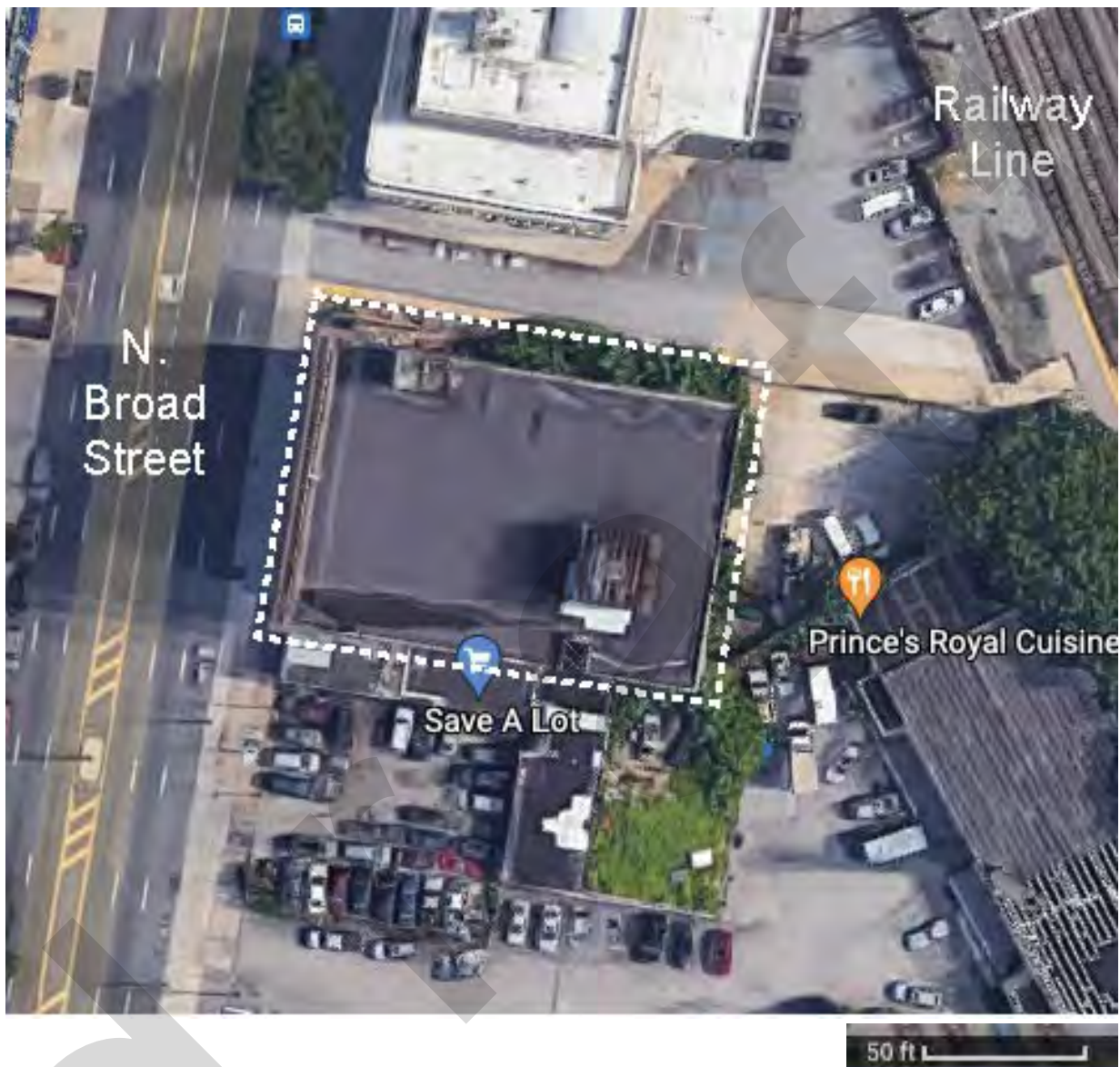
**Figure 14** – USGS Map excerpt. Subject property shown in blue, indicated by arrow, near the center.



**Figure 15** – Site Plan with NR Boundary shown in red. Scale: 1'' = 120'. The National Register boundary corresponds to the historic property boundary for the subject property. The ell-shaped resource on the south side of the subject building is an unrelated building. Directional north is at the top of the image.

E.A. Wright Bank Note Company Building  
Name of Property

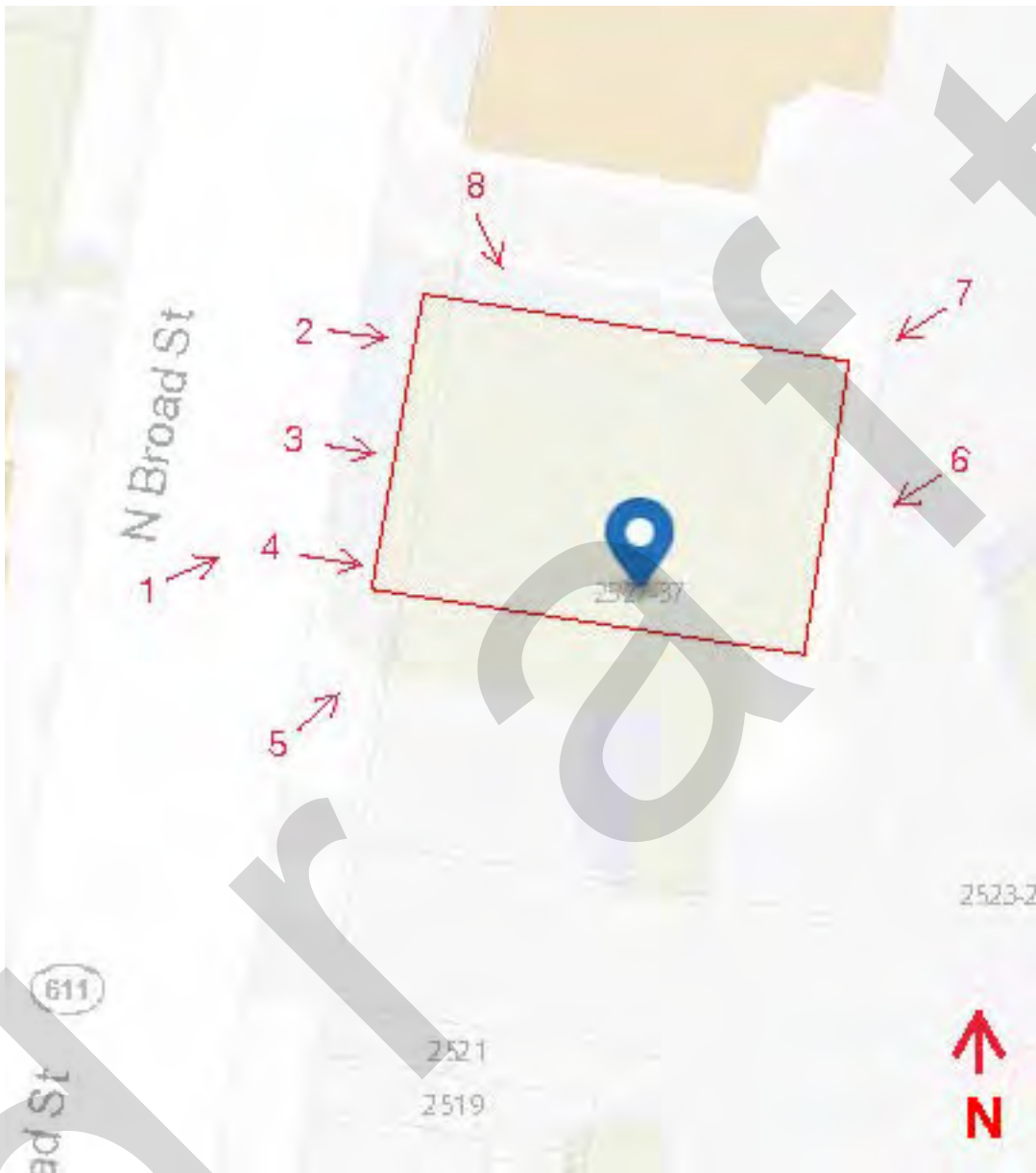
Philadelphia, PA  
County and State



**Figure 16** – Aerial image (2021). NR boundary shown in white. The boundary includes the lightwells and supporting walls along the north and east elevations.

E.A. Wright Bank Note Company Building  
Name of Property

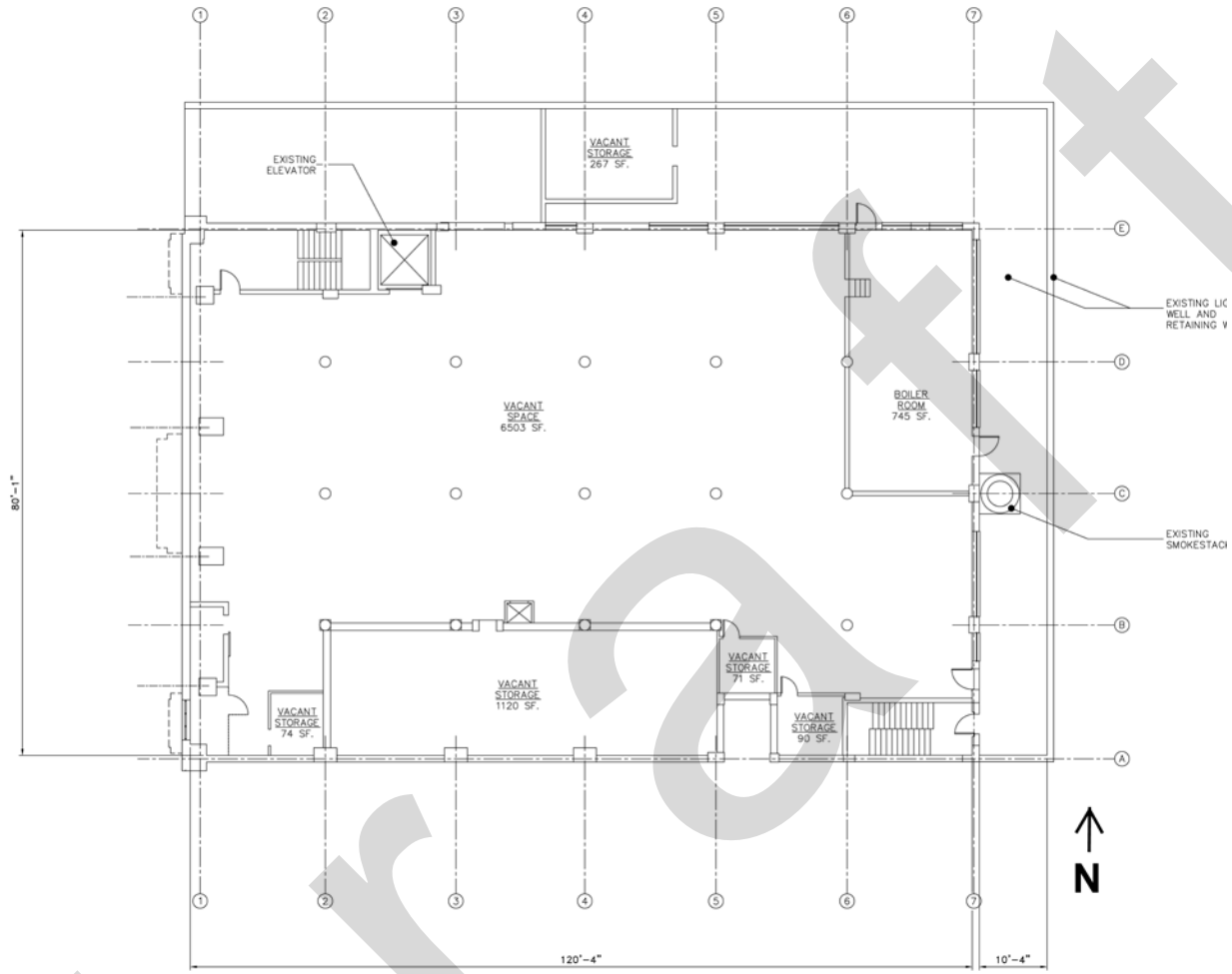
Philadelphia, PA  
County and State



**Figure 17** – Existing Site Plan with Photograph Key. NR boundary shown in red.

E.A. Wright Bank Note Company Building  
Name of Property

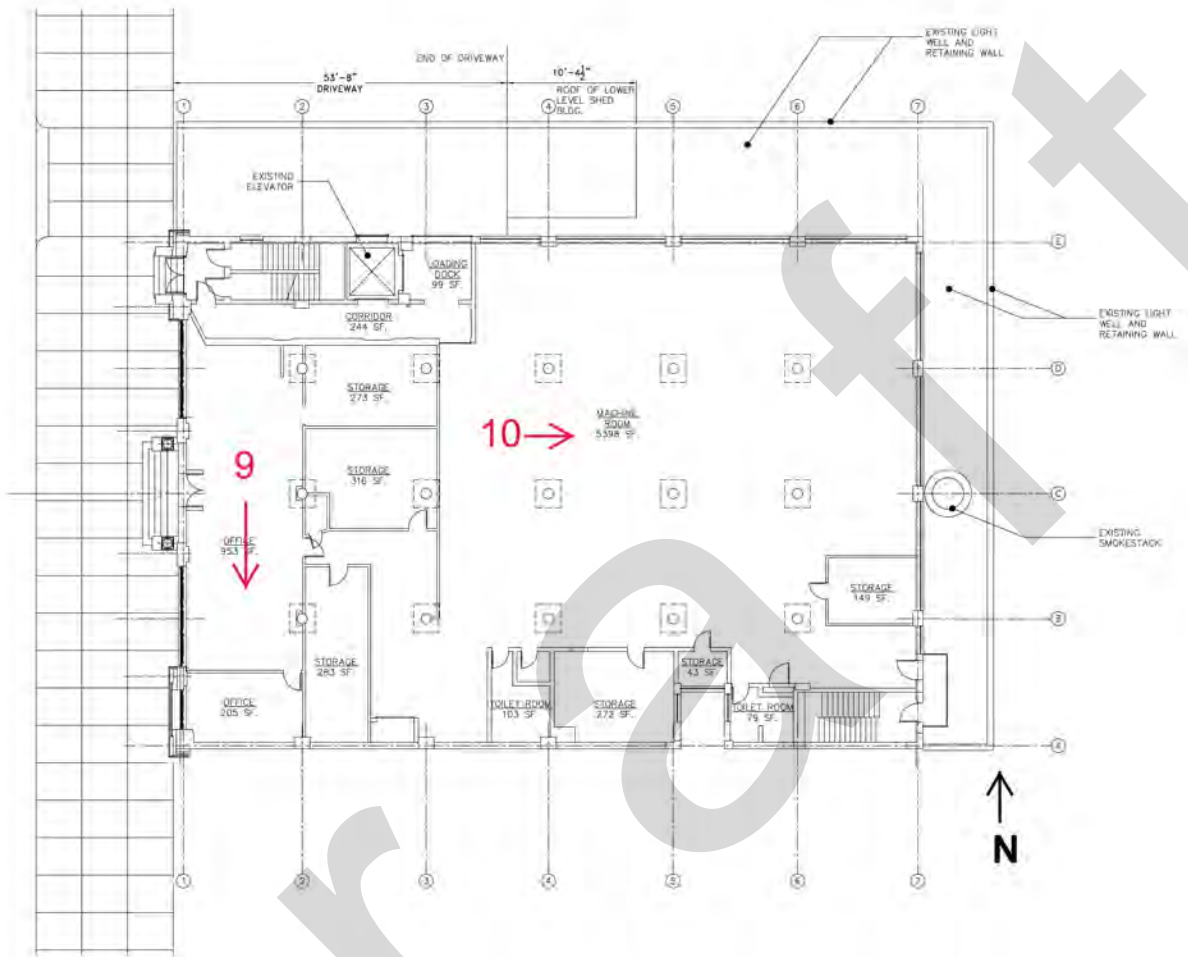
Philadelphia, PA  
County and State



**Figure 18** – Existing Basement Plan with Photograph Key. Scale: 1/8" = 1'0".

E.A. Wright Bank Note Company Building  
Name of Property

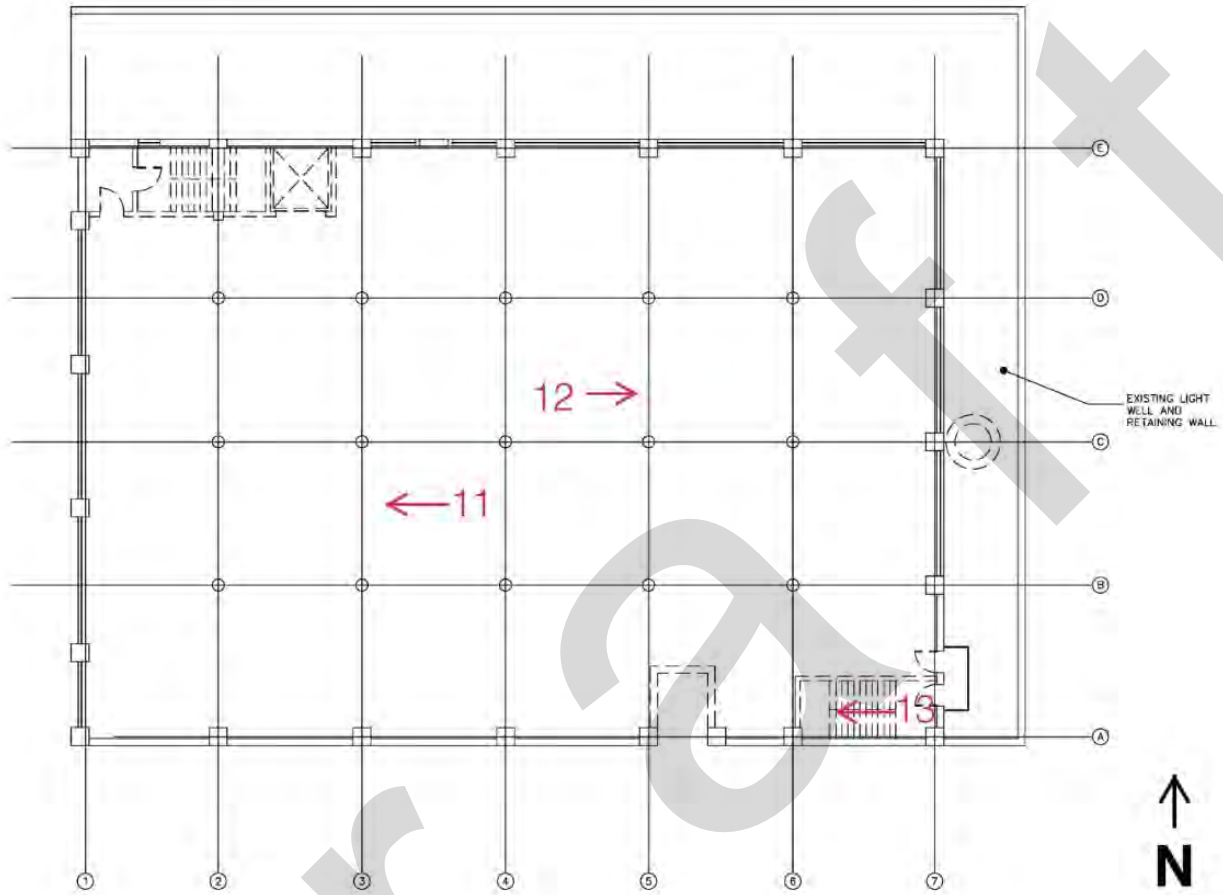
Philadelphia, PA  
County and State



**Figure 19** – Existing 1<sup>st</sup> Floor Plan with Photograph Key. Scale: 1/8" = 1'0".

E.A. Wright Bank Note Company Building  
Name of Property

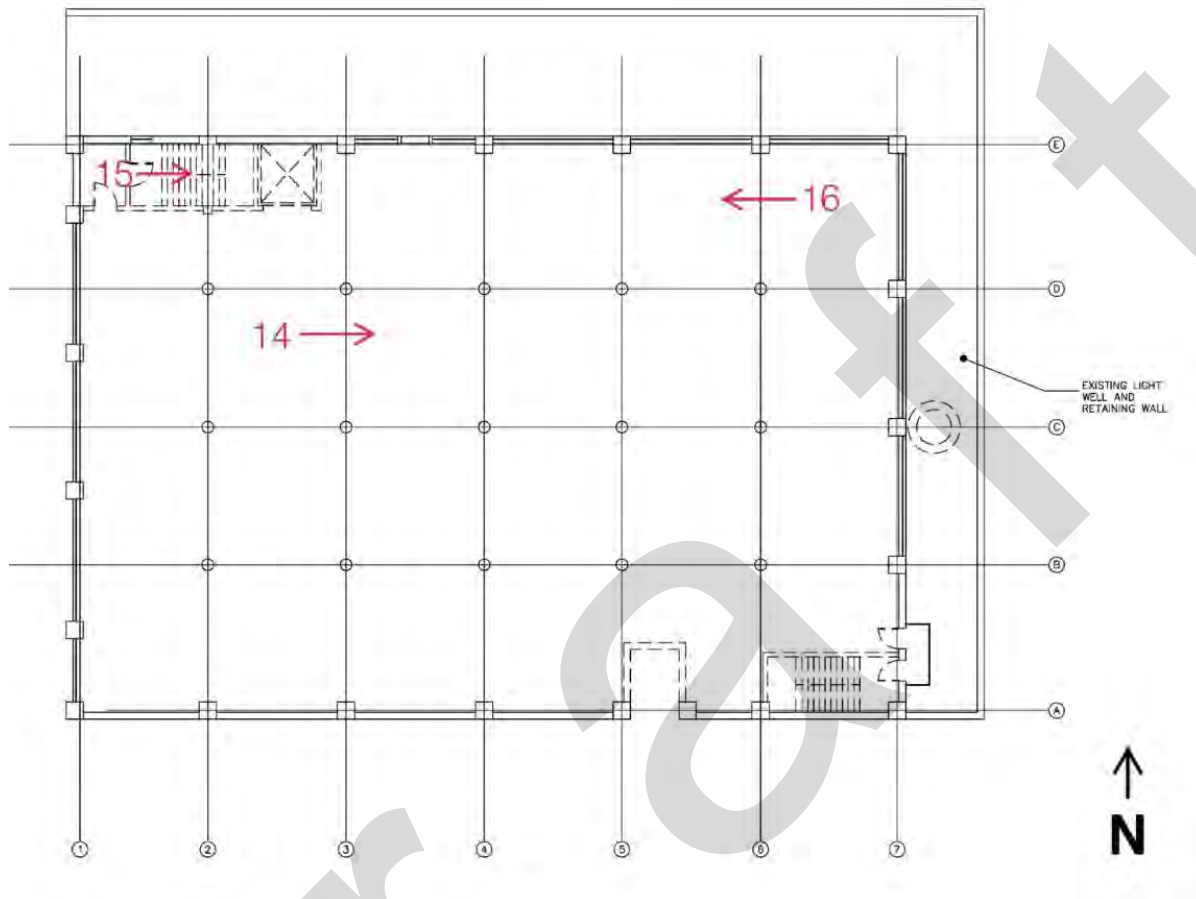
Philadelphia, PA  
County and State



**Figure 20** – Existing 2<sup>nd</sup> Plan with Photograph Key. Scale: 1/8" = 1'0".

E.A. Wright Bank Note Company Building  
Name of Property

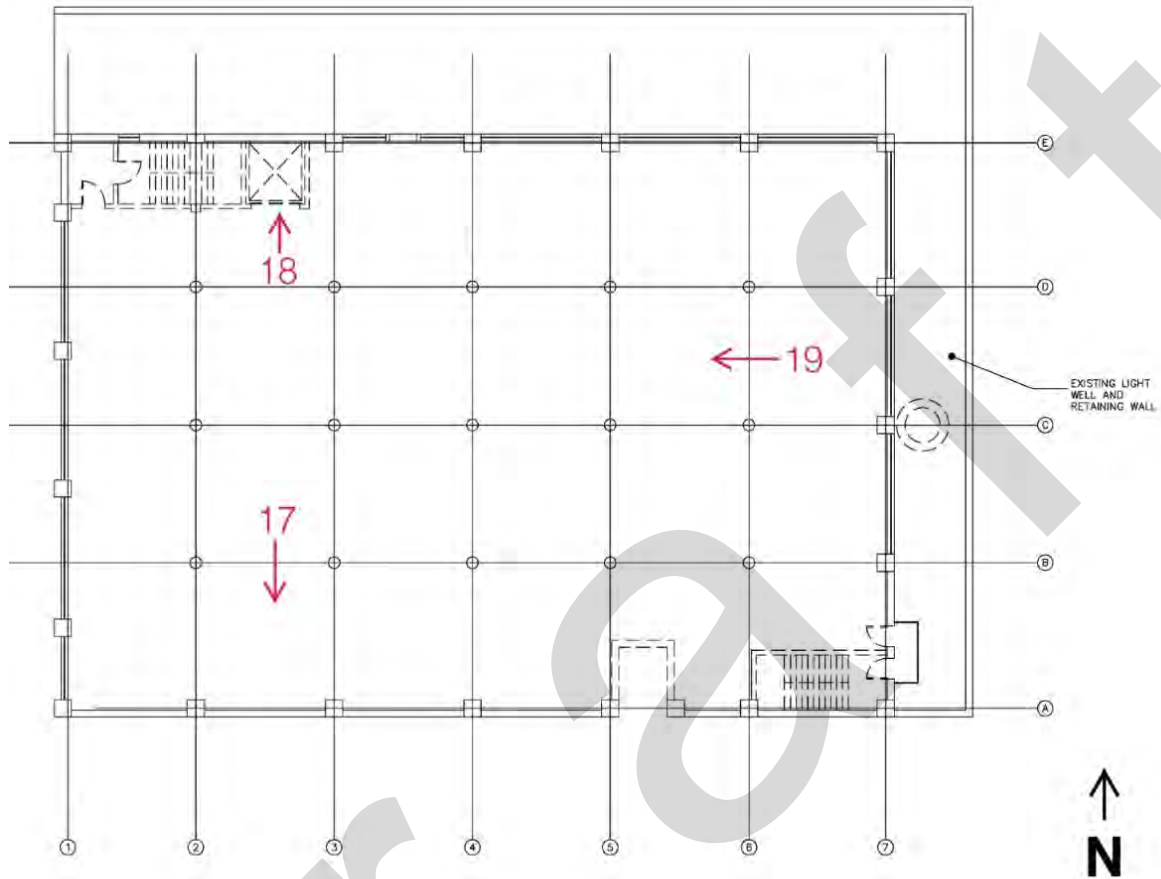
Philadelphia, PA  
County and State



**Figure 21** – Existing 3<sup>rd</sup> Floor Plan with Photograph Key. Scale: 1/8" = 1'0".

E.A. Wright Bank Note Company Building  
Name of Property

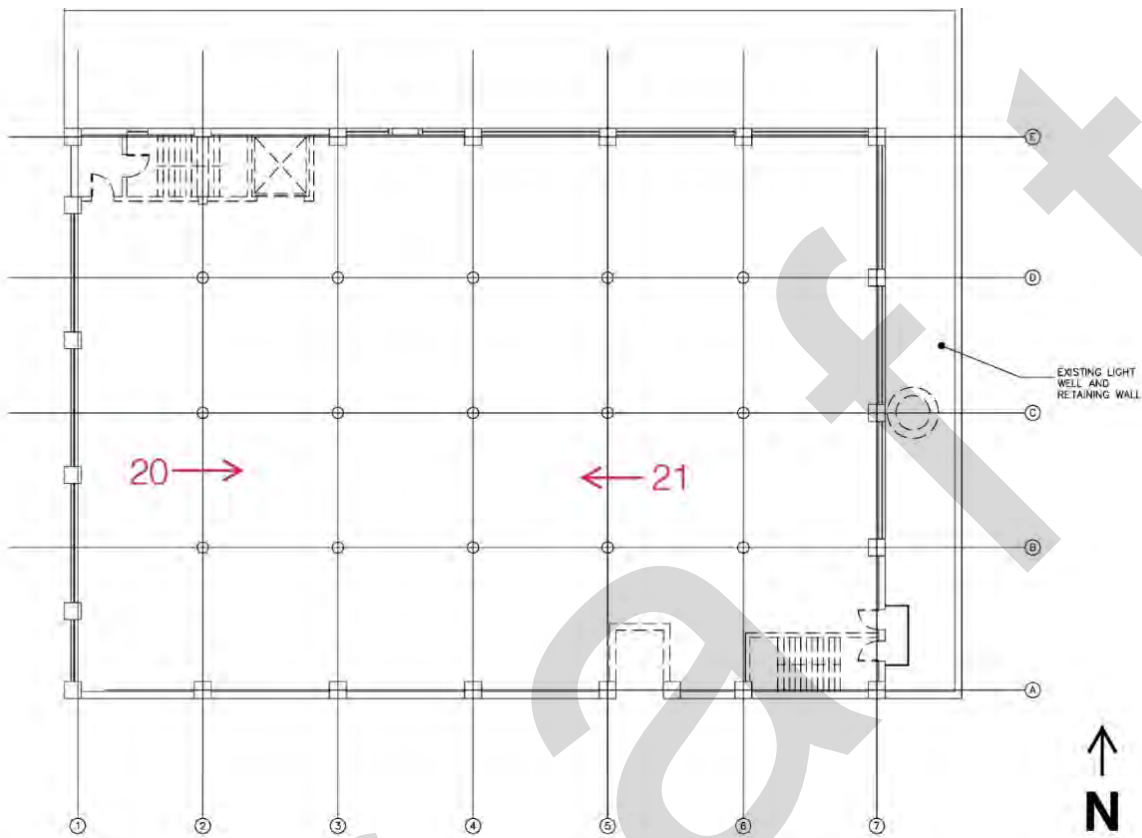
Philadelphia, PA  
County and State



**Figure 22**– Existing 4<sup>th</sup> Plan with Photograph Key. Scale: 1/8" = 1'0".

E.A. Wright Bank Note Company Building  
Name of Property

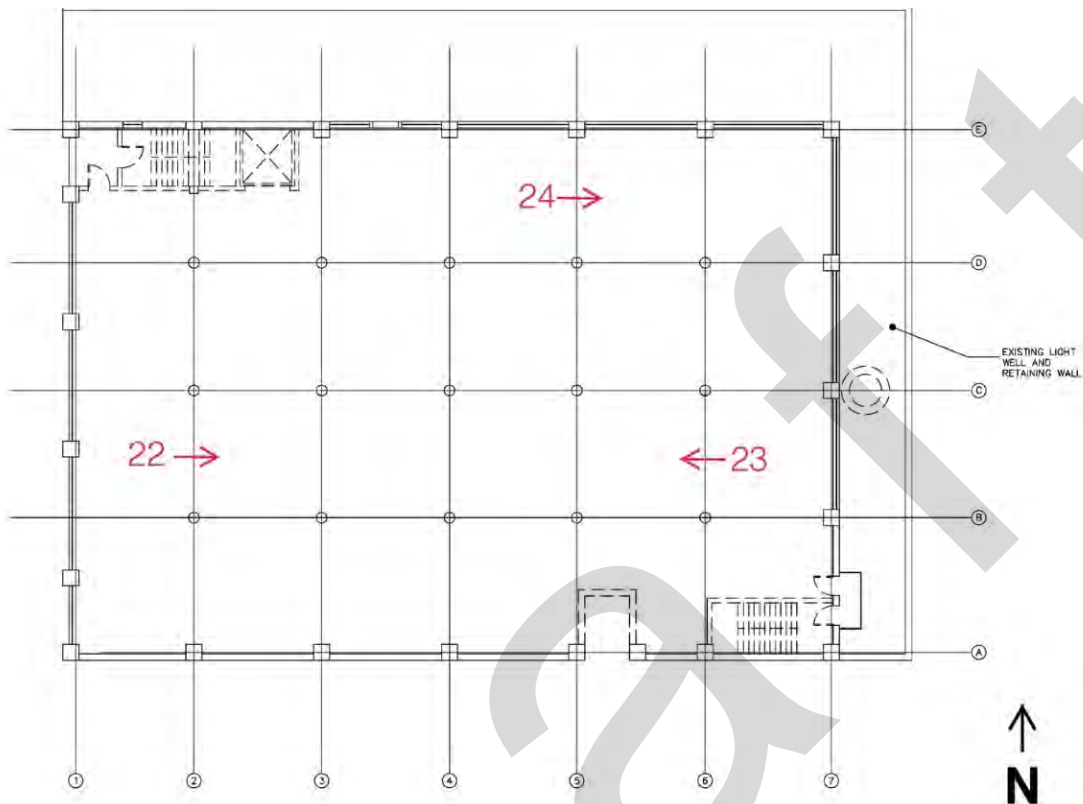
Philadelphia, PA  
County and State



**Figure 23** – Existing 5<sup>th</sup> Floor Plan with Photograph Key. Scale: 1/8" = 1'0".

E.A. Wright Bank Note Company Building  
Name of Property

Philadelphia, PA  
County and State



**Figure 24** – Existing 6<sup>th</sup> Floor Plan with Photograph Key. Scale: 1/8" = 1'0".

**Paperwork Reduction Act Statement:** This information is being collected for applications to the National Register of Historic Places to nominate properties for listing or determine eligibility for listing, to list properties, and to amend existing listings. Response to this request is required to obtain a benefit in accordance with the National Historic Preservation Act, as amended (16 U.S.C.460 et seq.).

**Estimated Burden Statement:** Public reporting burden for this form is estimated to average 100 hours per response including time for reviewing instructions, gathering and maintaining data, and completing and reviewing the form. Direct comments regarding this burden estimate or any aspect of this form to the Office of Planning and Performance Management, U.S. Dept. of the Interior, 1849 C. Street, NW, Washington, DC.