



C. Beige Berryman, AICP
Philadelphia Art Commission
1515 Arch Street, 13th Floor
Philadelphia, PA 19102

Re: Third Submission of Site Improvement Project at William H. Hunter School for Final Approval by the Philadelphia Art Commission

January 5, 2021

Dear Ms. Berryman,

SALT Design Studio and the School District of Philadelphia are resubmitting the enclosed package for proposed site improvements for William H. Hunter School located at 2400 N. Front Street, Philadelphia, PA 19133 in the Kensington neighborhood of Philadelphia.

The enclosed package includes the entire Construction Documentation drawing set at 90% completion for the Commissioners to review as a separate PDF. To be displayed during the upcoming Public Meeting is a presentation package which includes the following:

- Existing conditions photos with accompanying aerial image to further clarify the project context, existing shade on the schoolyard cast by the school building, and the extents of the improvements to the schoolyard.
- While the Site Plan and Perspective Renderings have not changed since our previous submission, we've included them to help indicate the colorful theme of the site improvements, as well as increased vegetation and green space in relation to the existing conditions.
- Finally, we've included *select* drawings from our 90% CD drawing set, including the Materials Plan, Planting Plan with Plant Schedule, and Grading & Drainage Plan.
- Updated Project Cost Estimate.

PROJECT PROGRAM

The proposed schoolyard design complies with the Outdoor Learning Requirements (OLR) designated in the School District of Philadelphia Design Guidelines and Standards (issued 02/08/2021). In response to the Art Commission Remarks from the 12/08/2021 meeting regarding programming, we direct your attention to the rendered and annotated Site Plan, as well as the Cover Sheet of the Construction Documentation Set, which clearly indicate how the proposed schoolyard design addresses SDP compulsory programming. Per the OLR, the proposed schoolyard design includes the following required components:

- Areas for active, creative, and passive play – *shown throughout Site Plan*
- Outdoor classroom space – *noted as Multi-Use Outdoor Classroom Platform*



- Areas for athletics and physical education – *Two half-size Basketball Courts and 3,060 SF of play equipment over safety surface is provided.*
- Areas for gathering and socialization – *shown throughout Site Plan.*
- Greening/planting, which shall include trees, shrubs, herbaceous perennials and grasses that help clean the air, manage stormwater, provide shade, reduce urban heat island, and create native habitat, along with gardens for learning and nature play – *in particular, note the Urban Forest, Rain Garden and Sensory Garden.*
- Stormwater management following Philadelphia Water Department (PWD) guidelines and requirements as needed.
 - *Please note that this project is required to keep disturbance under 15,000 SF and as such, does not require Technical Stormwater Review by PWD.*
- Shade, which should be created from structures and planting, and shall correspond to location of benches and other occupiable zones – *portion of Schoolyard is presently well shaded by the School Building, addition of 18 canopy trees will also provide shade.*
- Site Furnishings – *shown throughout Site Plan.*
- Security Measures, which may include lighting, cameras, fencing, a variety of egress and access points, and clear visibility and good sight lines across the schoolyard – *Existing fencing and main schoolyard gates will be maintained, sight lines are clear throughout schoolyard.*

The proposed schoolyard design for Hunter also follows the skill objectives developed by the Playful Learning Landscapes Action Network. These skill objectives include collaboration, communication, content, critical thinking, creative innovation, and confidence. The project at Hunter School began with a 11-week community and student/staff engagement period conducted by Mural Arts of Philadelphia. SALT Design Studio and School District personnel participated in virtual engagement events conducted by Mural Arts to hear feedback firsthand as the concept was developed with students and staff. Once Mural Arts concluded their engagement period, SALT used the students' concept that had emerged -- "*A dream, a fantasy, a magical place!*" -- and developed a colorful, imaginative, and inclusive schoolyard design for students of all ages and abilities.

STORMWATER MANAGEMENT

Stormwater management design has been led by the project Civil Engineer, Rodriguez Consulting, LLC. While the site is overall very flat in nature, the proposed design gently pitches new pavement towards the two new plant beds at the schoolyard perimeter along N. Howard Street. There is an existing stormwater inlet at the northwest corner of the site (in the "Expanded Schoolyard Area"), which is currently lower than surrounding existing grades and surrounded by lawn. The proposed design converts this area into a rain garden with herbaceous plants, shrubs, and trees that will tolerate inundation after storm events and become a learning opportunity for students. The new safety surface for the play equipment area will be installed as a porous system over an aggregate base, to promote infiltration in situ. Areas shown as trees in pavement will be installed with structural soil in a subsurface, connected tree trench to maximize root volume for tree growth. For further information regarding stormwater management, grading and



drainage, planting, and details, please see the enclosed Construction Documentation drawing set. The Construction Drawings have undergone Existing Resources and Site Analysis (ERSA) Conceptual Review by PWD and require only minor revisions to acquire final approval.

COMMUNITY ACCESSIBILITY

The collaborative design process included input from parents and community members. This included their commitment as stewards to stay involved through the site development process and the continued use of the schoolyard. It is expected that the community and school staff cooperative efforts will continue. We anticipate the open use of the schoolyard during non-school hours and on weekends during daylight hours.

STREET TREES

Howard Street, adjacent to the schoolyard, lies within a 50' Right of Way. The sidewalk is entirely within the ROW. There are no existing tree pits for street trees. Work within the ROW to remove concrete sidewalk and excavate material is outside the project limits. If there were tree pits available for planting we would consider adding street trees.

Our team is requesting final approval from the Philadelphia Art Commission to proceed with the project as shown.

For questions or comments related to the proposed design, construction details, or enclosed package materials, please contact SALT Design Studio using the following information:

Katrina Rogus, RLA
Studio Director
SALT DESIGN STUDIO
161 Leverington Avenue, Suite 1005
Philadelphia, PA 19127
E: katrina@saltdesigns.com
T: (215) 621-7600

For questions or comments related to budget, programming, or School District requirements, please contact the School District of Philadelphia Office of Capital Programs using the following information:

Daniel Mullin, RLA
Site Improvement Coordinator



THE SCHOOL DISTRICT OF
PHILADELPHIA

SALT
DESIGN STUDIO
LANDSCAPE ARCHITECTURE
PLANNING & URBAN DESIGN

The School District of Philadelphia, Office of Capital Programs
440 N. Broad Street, Suite 371
Philadelphia, PA 19130
E: dmullin@philasd.org
T: (215) 400-5849

Sincerely,

Katrina Rogus, RLA

and

Daniel P. Mullin

Daniel P. Mullin, RLA (The School District of Philadelphia)

HUNTER SCHOOLYARD EXISTING CONDITIONS - AERIAL IMAGERY



PHOTOGRAPHS



PHOTO 1: Existing Main Schoolyard Entrance Gate;
Location of Proposed Main Entry Corridor with Trees in Pavement & Site Furnishings



PHOTO 2: Existing Concrete Structure / Wall to be Removed;
Location of Main Entry Corridor Site Amenities & Outdoor Classroom Platform

PHOTOGRAPHS



PHOTO 3 (PANORAMA): Existing Concrete Schoolyard;
Location of Proposed Basketball Courts, Active Play Area & Urban Forest



PHOTO 4: Existing Concrete Structure/Wall to be Removed (left)
and Path to Secondary Building Entrance

PHOTOGRAPHS



PHOTO 5: Existing Rubber Surface Area (right) & Concrete Steps and Planters (left) to be Removed;
Location of Artificial Turf 'Rug', New Plantings & Outdoor Classroom Platform



PHOTO 6: Existing Raised Planters & Concrete Steps to be Removed;
Location of Proposed Outdoor Classroom Platform

PHOTOGRAPHS



PHOTO 7: Existing Grass Area & Concrete Wall/Planter to be Removed;
Location of Proposed Schoolyard Expansion & Rain Garden



PHOTO 8: Existing Secondary Schoolyard Entrance Gate & Schoolyard Beyond

PHOTOGRAPHS



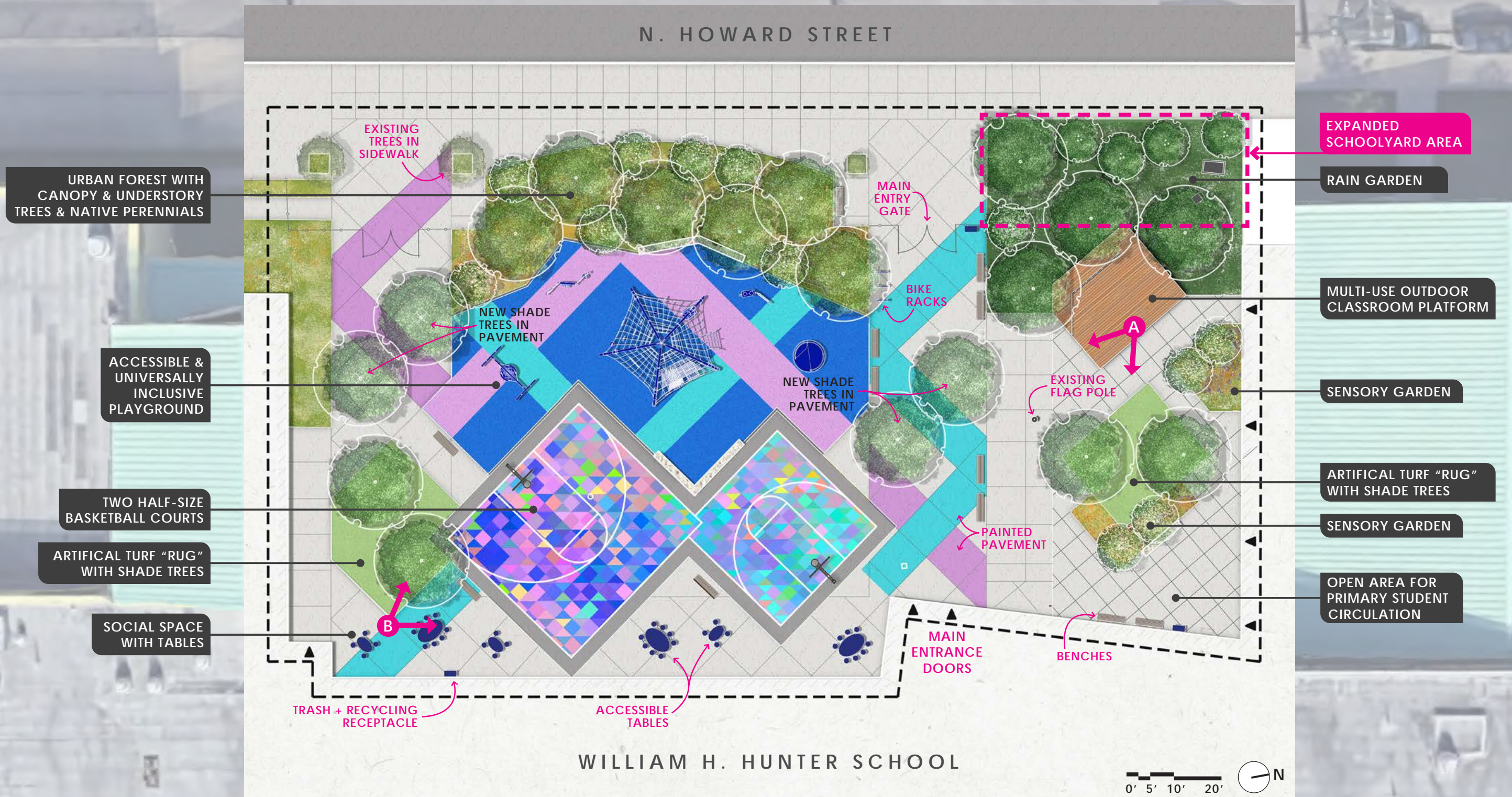
PHOTO 9: Existing Concrete Schoolyard;
Location of Proposed Active Play Area



PHOTO 10: Existing Right-of-Way Sidewalk Adjacent to Schoolyard;
Location of Proposed Urban Forest (right) to Buffer Schoolyard from Street

HUNTER SCHOOLYARD

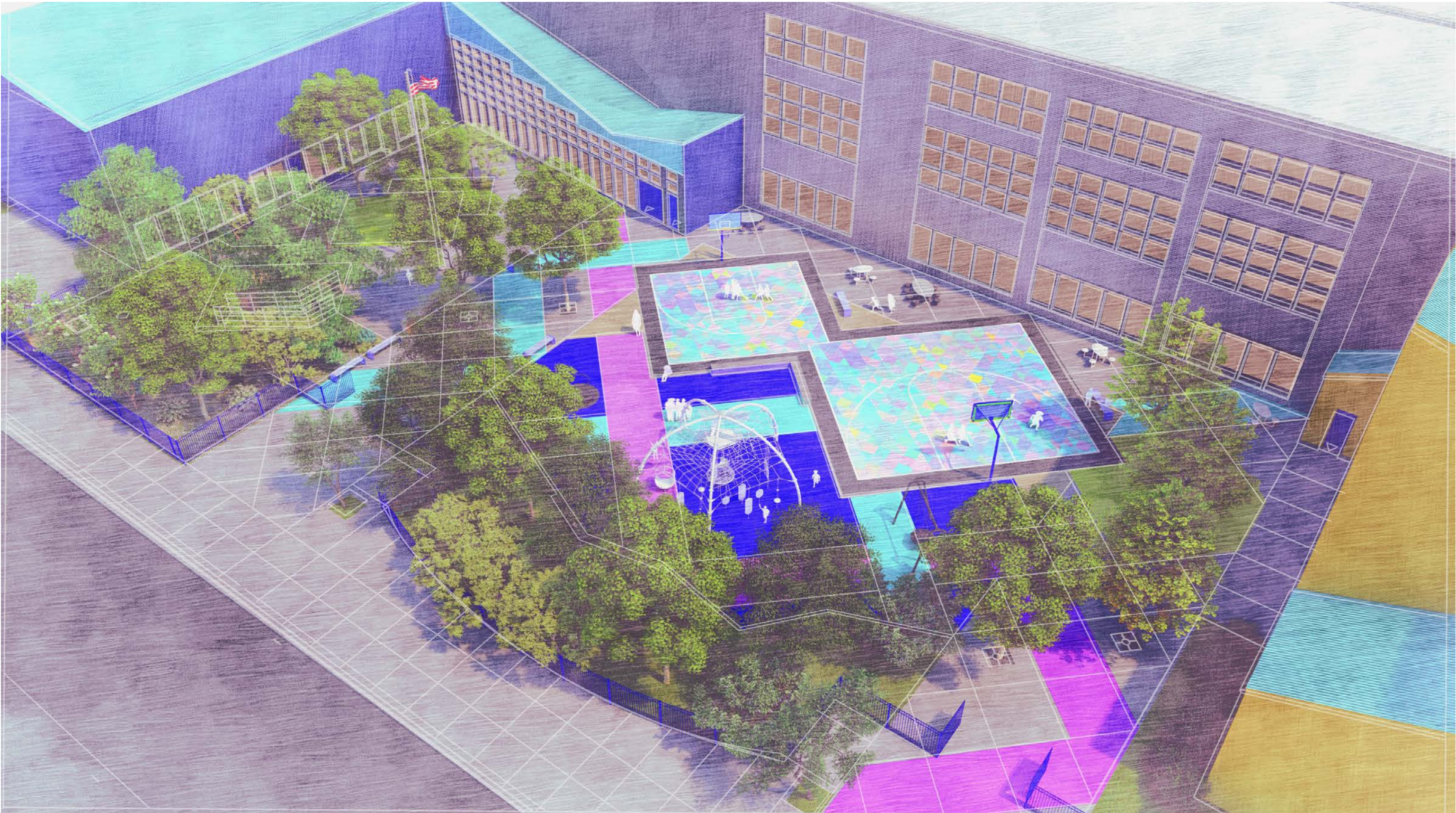
A dream, a fantasy, a magical place!



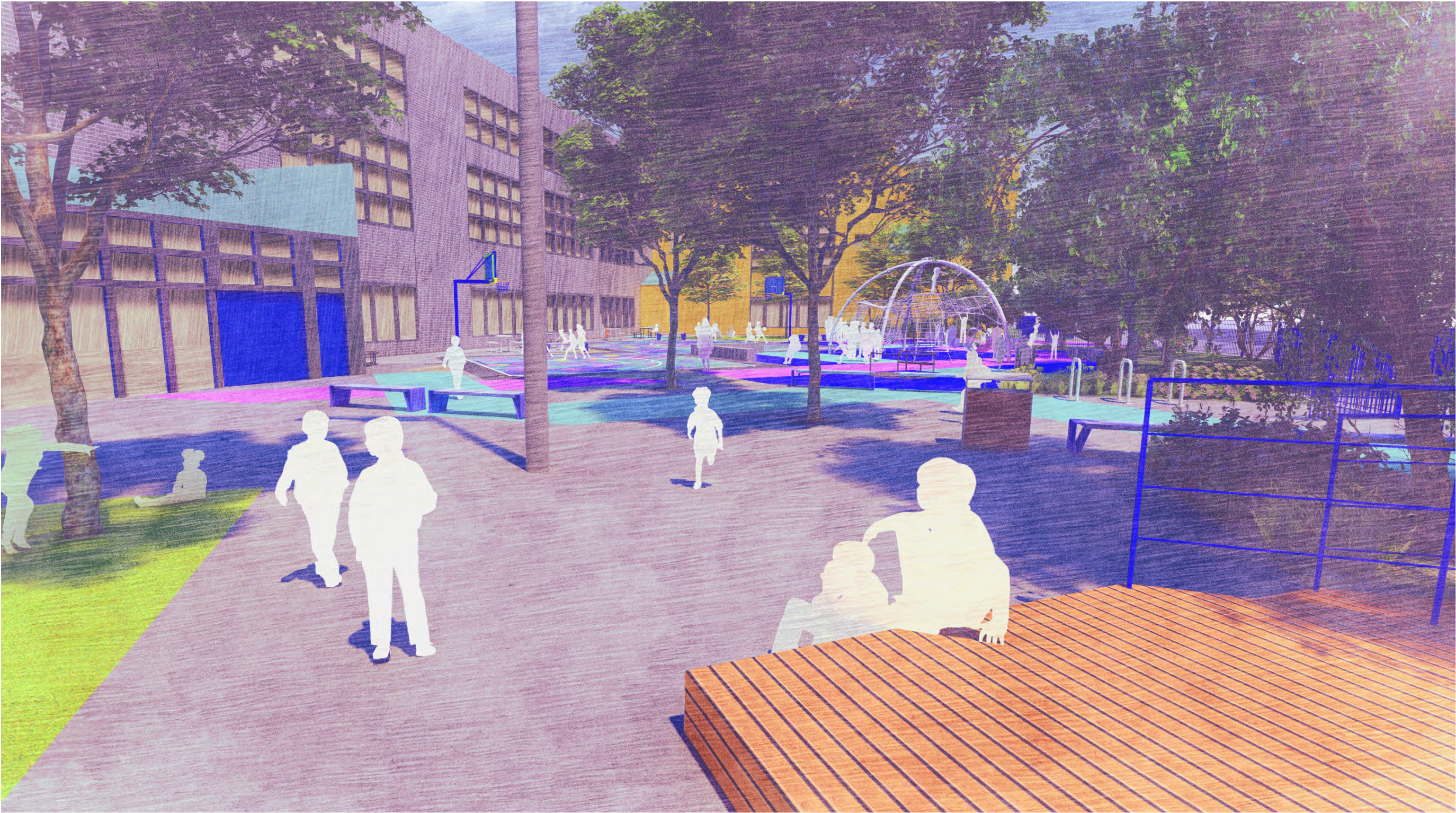
HUNTER SCHOOLYARD EXISTING CONDITIONS - 3D AERIAL IMAGERY



HUNTER SCHOOLYARD BIRDSEYE VIEW PERSPECTIVE RENDERING



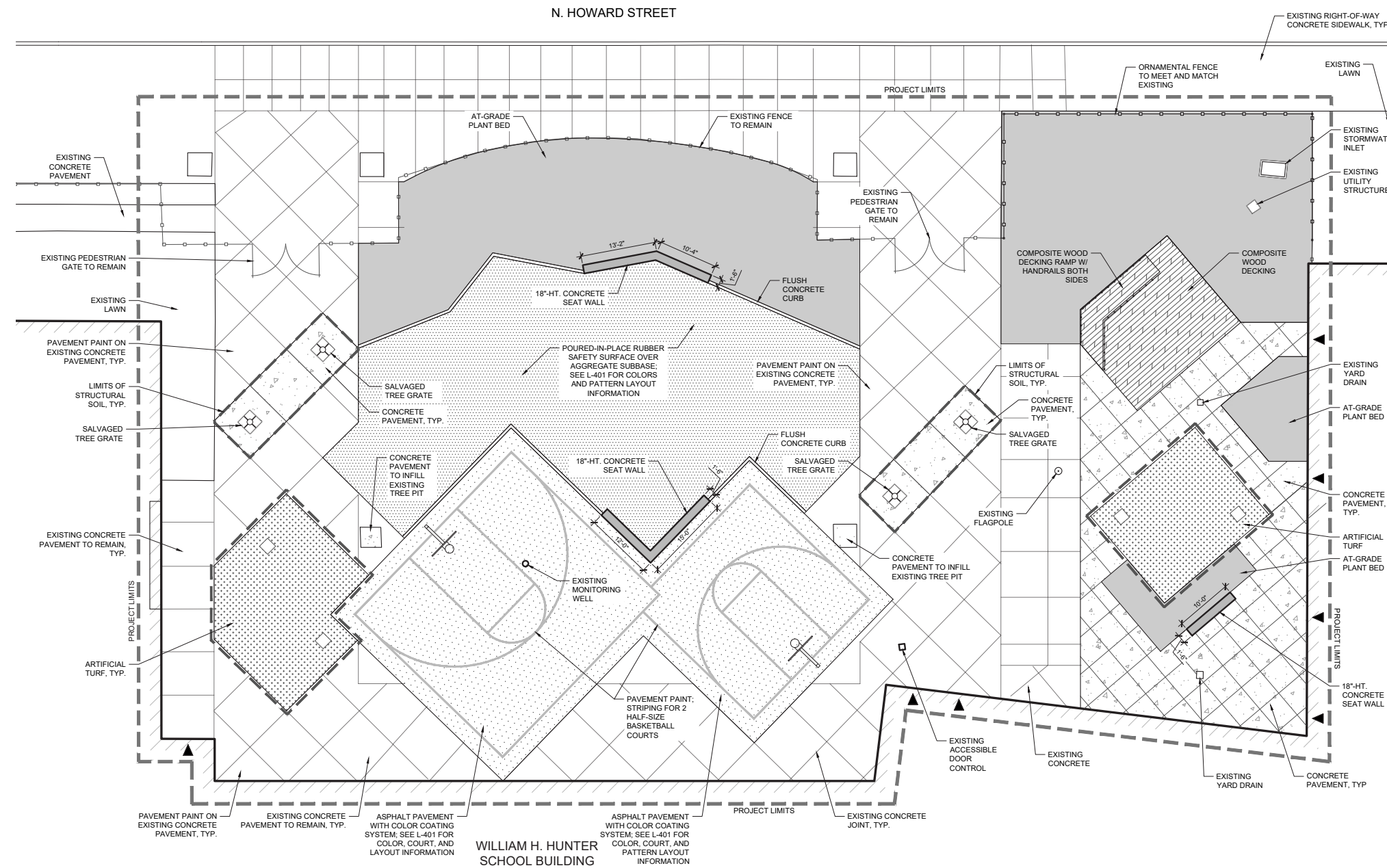
HUNTER SCHOOLYARD PERSPECTIVE RENDERING A






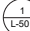


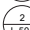
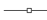
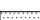


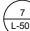



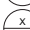



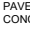


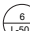
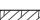
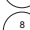
HUNTER SCHOOLYARD PERSPECTIVE RENDERING B



SITE MATERIALS PLAN



LEGEND:

- | | | | | |
|---|---|---|---|----------------------------|
|  | PROJECT LIMITS |  | EXISTING BUILDING ENTRANCE | |
|  |  1
L-501 |  | EXISTING FENCE GATE | |
|  |  2
L-501 |  | EXISTING FENCE | |
|  |  4
L-501 |  |  7
L-501 | ORNAMENTAL FENCE |
|  |  7
L-503 |  |  X
L-50X | HANDRAIL |
| | PAVEMENT PAINT ON EXISTING CONCRETE PAVEMENT |  |  7
L-502 | SALVAGED TREE GRATE |
|  |  6
L-501 |  | PLANT BED; SEE L-105 | |
|  |  8
L-501 | | | |
|  |  5
L-501 | | | |

SITE MATERIALS NOTES:

1. SITE SURVEY DATA WAS PROVIDED BY RODRIGUEZ CONSULTING, LLC TO SALT DESIGN STUDIO ON MARCH 24, 2021.
2. ALL CONSTRUCTION SHALL CONFORM TO CITY, COUNTY, STATE, AND FEDERAL REGULATIONS.
3. THESE CONTRACT DOCUMENTS MAKE NO REPRESENTATIONS AS TO THE MEANS AND METHODS OF CONSTRUCTION.
4. SEE L-102 FOR SITE LAYOUT PLAN.
5. UNLESS OTHERWISE NOTED, EXISTING CONCRETE PAVEMENT TO REMAIN.
6. EXPANSION JOINTS OCCUR AT EDGES OF ALL NEW PAVEMENTS AND EXISTING CONCRETE PAVEMENT. SEE DETAIL 31L-501.
7. COORDINATE INSTALLATION OF FURNISHINGS AND EQUIPMENT FOUNDATIONS PRIOR TO INSTALLING SITE PAVEMENTS.
8. SEE L-401 FOR PLAN ENLARGEMENTS WITH DETAILED INFORMATION ABOUT COLOR COATING ON ASPHALT PAVEMENT FOR BASKETBALL COURTS AND SAFETY SURFACE PATTERNING.

CLIENT:

 THE SCHOOL DISTRICT OF
PHILADELPHIA

440 N. BROAD STREET
SUITE 371
PHILADELPHIA, PA 19130
www.philasd.org

PROJECT NAME & ADDRESS:
WILLIAM H.
HUNTER SCHOOL
- SCHOOLYARD
IMPROVEMENTS

2400 N. FRONT ST.
PHILADELPHIA, PA
19133

SDP CONTRACT NUMBER:
1474 / F20

PRIME CONSULTANT / LANDSCAPE ARCHITECT:

SALT
DESIGN STUDIO
LANDSCAPE ARCHITECTURE
PLANNING & URBAN DESIGN

4100 MAIN STREET
SUITE 201
PHILADELPHIA, PA 19127
T: (215) 621-7600
www.saltdesignstudio.com

CIVIL ENGINEER:



100 W. OXFORD STREET
SUITE E-3100
PHILADELPHIA, PA 19122
T: (215) 987-1931
www.rodriquez.biz

PROJECT PHASE:

CONSTRUCTION
DOCUMENTS
(90%)

SEAL:

**DRAFT - NOT FOR
CONSTRUCTION**

SHEET TITLE:

SITE MATERIALS PLAN

REV	DATE	DESCRIPTION

SCALE:

AS NOTED

DATE: _____

12/20/202

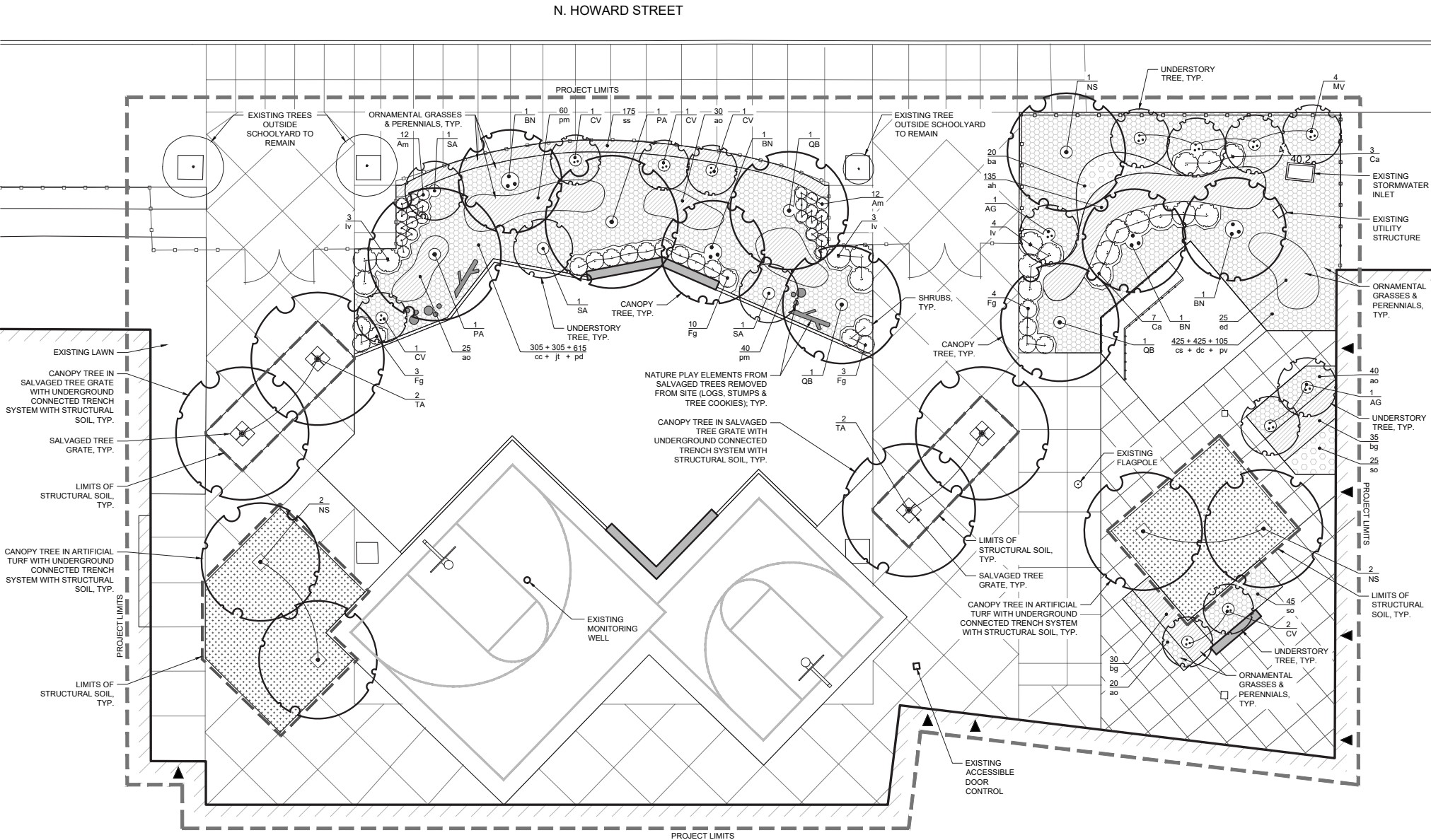
SHEET NUMBER:

L-103

SALT DESIGN STUDIO FILE NO.:

2102

PLANTING PLAN & PLANT SCHEDULE



1 PLANTING PLAN

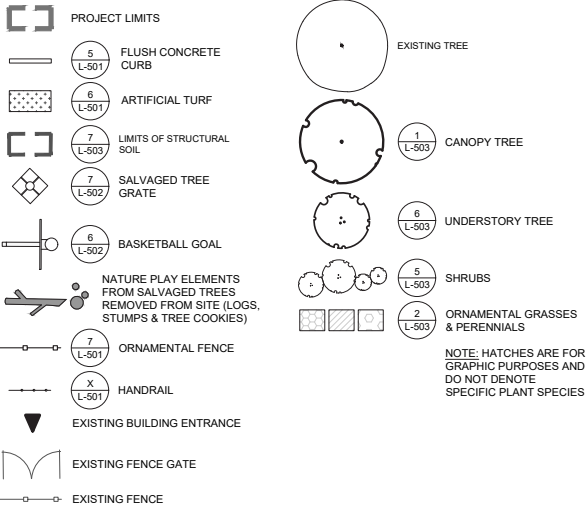
PLANT SCHEDULE:

KEY	QTY	BOTANICAL NAME	COMMON NAME	SIZE	CONDITION	SPACING
CANOPY TREES						
BN	4	<i>*Betula nigra Dura-Heat™</i>	River Birch	2"-2.5" CAL.	B&B, SINGLE OR MULTI-STEM.	AS SHOWN
NS	5	<i>*Nyssa sylvatica Green Gable™</i>	*Black Gum / Black Tupelo	2"-2.5" CAL.	CONTAINER	AS SHOWN
PA	2	<i>Platanus x acerifolia 'Bloodgood'</i>	London Planetree	2"-2.5" CAL.	B&B	AS SHOWN
QB	3	<i>*Quercus bicolor</i>	Swamp White Oak	2"-2.5" CAL.	B&B	AS SHOWN
TA	4	<i>Tilia americana</i>	American Linden / Basswood	2"-2.5" CAL.	B&B	AS SHOWN
18 TOTAL CANOPY TREES						
* Trees marked with asterisk are fall dig hazards require special attention for fall digging and planting.						
UNDERSTORY TREES						
AG	3	<i>Amelanchier x grandiflora Autumn Brilliance®</i>	Apple Serviceberry	5'-6' HT.	B&B OR CONTAINER, MULTI-STEM.	AS SHOWN
CV	6	<i>Chionanthus virginicus</i>	White Fringetree	5'-6' HT.	B&B OR CONTAINER	AS SHOWN
MV	4	<i>Magnolia virginiana Moonglow®</i>	Sweetbay Magnolia	5'-6' HT.	B&B OR CONTAINER, MULTI-STEM.	AS SHOWN
SA	3	<i>Sassafras albidum</i>	Sassafras	5'-6' HT.	B&B OR CONTAINER	AS SHOWN
16 TOTAL UNDERSTORY TREES						

KEY	QTY	BOTANICAL NAME	COMMON NAME	SIZE	CONDITION	SPACING
SHRUBS						
Am	24	<i>Aronia melanocarpa Low Scape Mound®</i>	Chokeberry	#5	CONTAINER	AS SHOWN
Ca	8	<i>Ceanothus americanus</i>	New Jersey Tea	#5	CONTAINER	AS SHOWN
Fg	10	<i>Fothergilla gardenii</i>	Dwarf Fothergilla	#5	CONTAINER	AS SHOWN
Iv	10	<i>Itea virginica 'Merlot'</i>	Sweetspire	#5	CONTAINER	AS SHOWN
52 TOTAL SHRUBS						
ORNAMENTAL GRASSES						
bg	65	<i>Bouteloua gracilis 'Blonde Ambition'</i>	Blue Grama	1 GAL.	FULLY ROOTED, CONTAINER	18" O.C.
cc	305	<i>Carex cherokeensis</i>	Cherokee Sedge	1 GAL.	FULLY ROOTED, CONTAINER	12" O.C.
cs	425	<i>Carex stricta</i>	Tussock Sedge	1 GAL.	FULLY ROOTED, CONTAINER	12" O.C.
dc	425	<i>Deschampsia cespitosa 'Goldtau'</i>	Tufted Hairgrass	1 GAL.	FULLY ROOTED, CONTAINER	12" O.C.
jt	305	<i>Juncus tenuis</i>	Path Rush	1 GAL.	FULLY ROOTED, CONTAINER	12" O.C.
pv	105	<i>Panicum virgatum 'Shenandoah'</i>	Switchgrass	1 GAL.	FULLY ROOTED, CONTAINER	24" O.C.
ss	175	<i>Schizachyrium scoparium 'Standing Ovation'</i>	Little Bluestem	1 GAL.	FULLY ROOTED, CONTAINER	12" O.C.
1,805 TOTAL ORNAMENTAL GRASSES						

KEY	QTY	BOTANICAL NAME	COMMON NAME	SIZE	CONDITION	SPACING
PERENNIALS						
ah	135	<i>Amsonia hubrichtii</i>	Threadleaf Bluestar	1 GAL.	FULLY ROOTED, CONTAINER	18" O.C.
ao	115	<i>Aster oblongifolius 'Raydon's Favorite' (syn. Symphyotrichum oblongifolium 'Raydon's Favorite')</i>	Aromatic Aster	1 GAL.	FULLY ROOTED, CONTAINER	18" O.C.
ba	20	<i>Baptisia australis</i>	False Blue Indigo	1 GAL.	FULLY ROOTED, CONTAINER	24" O.C.
ed	25	<i>Eupatorium dubium 'Baby Joe' (syn. Eutrochium dubium)</i>	Joe Pye Weed	1 GAL.	FULLY ROOTED, CONTAINER	24" O.C.
pd	615	<i>Phlox divaricata 'May Breeze'</i>	Wild Blue Phlox	1 GAL.	FULLY ROOTED, CONTAINER	12" O.C.
pm	100	<i>Pycnanthemum muticum</i>	Mountain Mint	1 GAL.	FULLY ROOTED, CONTAINER	18" O.C.
so	70	<i>Solidago odora</i>	Sweet Goldenrod	1 GAL.	FULLY ROOTED, CONTAINER	18" O.C.
1,080 TOTAL PERENNIALS						
BULBS						
al		<i>Allium Lucy Ball</i>	Giant Flowering Onion	TOP QUALITY	CLEAN, DRY BULB	IN FIELD
cs		<i>Camassia Scacajawa</i>	Camassia	TOP QUALITY	CLEAN, DRY BULB	IN FIELD
ls		<i>Liatris spicata</i>	Gayfeather	TOP QUALITY	CLEAN, DRY BULB OR 4" POT	IN FIELD
150 TOTAL BULBS						

LEGEND:



PLANTING NOTES:

- SITE SURVEY DATA WAS PROVIDED BY RODRIGUEZ CONSULTING, LLC TO SALT DESIGN STUDIO ON MARCH 24, 2021.
- ALL CONSTRUCTION SHALL CONFORM TO CITY, STATE, AND FEDERAL REGULATIONS.
- CONTRACTOR SHALL FIELD VERIFY LOCATIONS AND ELEVATIONS OF ALL UTILITIES AND SUBTERRANEAN ELEMENTS PRIOR TO COMMENCING WORK. CONTRACTOR SHALL NOTIFY LANDSCAPE ARCHITECT FOR RELOCATION INSTRUCTIONS IF A PLANT IS LOCATED WITHIN 3'-0" OF AN UNDERGROUND UTILITY.
- CONTRACTOR SHALL NOTIFY LANDSCAPE ARCHITECT OF ANY DISCREPANCIES PRIOR TO BEGINNING OR CONTINUING WORK.
- THERE WILL BE NO PLANT SUBSTITUTIONS, DELETIONS, OR ADDITIONS WITHOUT THE APPROVAL OF LANDSCAPE ARCHITECT.
- CONTRACTOR SHALL NOTIFY LANDSCAPE ARCHITECT IF SUBSOIL CONDITIONS SHOW EVIDENCE OF UNEXPECTED WATER RETENTION IN TREE OR SHRUB PITS.
- CONTRACTOR SHALL PROVIDE EROSION CONTROL MEASURES TO PREVENT SOIL LOSS AS INDICATED ON CIVIL ENGINEERING DRAWINGS.
- ALL IMPORTED PLANTING SOIL MUST BE TESTED AND APPROVED BY LANDSCAPE ARCHITECT PRIOR TO INSTALLATION. SEE SPECIFICATIONS.
- SEE PLANT SCHEDULE FOR PLANT SIZES, QUANTITIES, SPECIES AND CONDITION.
- TREE AND SHRUB LOCATIONS SHALL BE STAKED OR FLAGGED IN FIELD FOR REVIEW AND APPROVAL BY LANDSCAPE ARCHITECT PRIOR TO STARTING PLANT INSTALLATION.
- ALL PERENNIAL PLANTINGS SHALL BE LAID OUT IN THE FIELD FOR REVIEW AND APPROVAL BY LANDSCAPE ARCHITECT PRIOR TO STARTING PLANT INSTALLATION.
- ALL TREES SHALL HAVE AT LEAST 24" APPROVED PLANTING SOIL AROUND ROOTBALL. ALL SHRUBS SHALL HAVE AT LEAST 18" APPROVED PLANTING SOIL AROUND ROOTBALL.
- CANOPY TREES SHALL BE LIMBED UP TO 7-FT. HEIGHT UNDER DIRECTION OF LANDSCAPE ARCHITECT. DO NOT LIMB TREES PRIOR TO INSTALLATION.
- CONTRACTOR SHALL INSTALL IRRIGATION BAGS FOR ALL NEW CANOPY AND UNDERSTORY TREES IMMEDIATELY UPON COMPLETION OF INSTALLATION. SEE SPECIFICATIONS.
- MULCH, COMPOST AND/OR LEAF LITTER IS TO BE INSTALLED AS INDICATED ON DETAILS AND IN SPECIFICATIONS.
- TEMPORARY DRIP IRRIGATION TO BE INSTALLED AND MAINTAINED FOR ONE FULL YEAR FROM PROJECT CLOSEOUT. SUBMIT SHOP DRAWINGS OF TEMPORARY DRIP IRRIGATION LAYOUT AND INFORMATION SUBMITTALS FOR REVIEW AND APPROVAL BY LANDSCAPE ARCHITECT PRIOR TO INSTALLATION.
- TEMPORARY PLANT PROTECTION FENCING TO BE INSTALLED IMMEDIATELY UPON COMPLETION OF PLANT INSTALLATION. PROTECTION FENCING TO BE LOCATED ALONG ALL PLANT BED EDGES TO PROTECT PERENNIAL AND SHRUB PLANTINGS.

CLIENT:
THE SCHOOL DISTRICT OF
PHILADELPHIA
440 N. BROAD STREET
SUITE 371
PHILADELPHIA, PA 19130
www.philasd.org

PROJECT NAME & ADDRESS:
WILLIAM H.
HUNTER SCHOOL
- SCHOOLYARD
IMPROVEMENTS

2400 N. FRONT ST.
PHILADELPHIA, PA
19133

OSP CONTRACT NUMBER:
1474 / F20

FRAME CONSULTANT / LANDSCAPE ARCHITECT:
SALT
DESIGN STUDIO
LANDSCAPE ARCHITECTURE
PLANNING & URBAN DESIGN

4100 MAIN STREET
SUITE 201
PHILADELPHIA, PA 19127
T: (215) 621-7600
www.saltdesignstudio.com

CIVIL ENGINEER:
rodriguez
ENGINEERS • SURVEYORS • GIS
100 W. OXFORD STREET
SUITE E-3100
PHILADELPHIA, PA 19122
T: (215) 987-1931
www.rodriguez.biz

PROJECT PHASE:
CONSTRUCTION
DOCUMENTS
(90%)

DRAFT - NOT FOR
CONSTRUCTION

SHEET TITLE:

PLANTING
PLAN

REV	DATE	DESCRIPTION

SCALE:
AS NOTED
DATE: 12/20/2021
DRAWN BY: KREF,GA
CHECKED BY: SPS

L-105

SALT DESIGN STUDIO FILE NO.:
2102

Note: Drawing for this Submission is Not To Scale, Actual Drawing Size is 24" x 36"

PLANT SCHEDULE

KEY	QTY	BOTANICAL NAME	COMMON NAME	SIZE	CONDITION	SPACING
CANOPY TREES						
BN	4	* <i>Betula nigra Dura-Heat™</i>	River Birch	2"-2.5" CAL.	B&B, SINGLE OR MULTI-STEM	AS SHOWN
NS	5	* <i>Nyssa sylvatica Green Gable™</i>	*Black Gum / Black Tupelo	2"-2.5" CAL.	CONTAINER	AS SHOWN
PA	2	<i>Platanus x acerifolia 'Bloodgood'</i>	London Planetree	2"-2.5" CAL.	B&B	AS SHOWN
QB	3	* <i>Quercus bicolor</i>	Swamp White Oak	2"-2.5" CAL.	B&B	AS SHOWN
TA	4	<i>Tilia americana</i>	American Linden / Basswood	2"-2.5" CAL.	B&B	AS SHOWN

18 TOTAL CANOPY TREES

* Trees marked with asterisk are fall dig hazards require special attention for fall digging and planting.

UNDERSTORY TREES						
AG	3	<i>Amelanchier x grandiflora Autumn Brilliance®</i>	Apple Serviceberry	5'-6' HT.	B&B OR CONTAINER, MULTI-STEM	AS SHOWN
CV	6	<i>Chionanthus virginicus</i>	White Fringetree	5'-6' HT.	B&B OR CONTAINER	AS SHOWN
MV	4	<i>Magnolia virginiana Moonglow®</i>	Sweetbay Magnolia	5'-6' HT.	B&B OR CONTAINER, MULTI-STEM	AS SHOWN
SA	3	<i>Sassafras albidum</i>	Sassafras	5'-6' HT.	B&B OR CONTAINER	AS SHOWN

16 TOTAL UNDERSTORY TREES

SHRUBS						
Am	24	<i>Aronia melanocarpa Low Scape Mound®</i>	Chokeberry	#5	CONTAINER	AS SHOWN
Ca	8	<i>Ceanothus americanus</i>	New Jersey Tea	#5	CONTAINER	AS SHOWN
Fg	10	<i>Fothergilla gardenii</i>	Dwarf Fothergilla	#5	CONTAINER	AS SHOWN
Iv	10	<i>Itea virginica 'Merlot'</i>	Sweetspire	#5	CONTAINER	AS SHOWN

52 TOTAL SHRUBS

ORNAMENTAL GRASSES						
bg	65	<i>Bouteloua gracilis 'Blonde Ambition'</i>	Blue Grama	1 GAL.	FULLY ROOTED, CONTAINER	18" O.C.
cc	305	<i>Carex cherokeensis</i>	Cherokee Sedge	1 GAL.	FULLY ROOTED, CONTAINER	12" O.C.
cs	425	<i>Carex stricta</i>	Tussock Sedge	1 GAL.	FULLY ROOTED, CONTAINER	12" O.C.
dc	425	<i>Deschampsia cespitosa 'Goldtau'</i>	Tufted Hairgrass	1 GAL.	FULLY ROOTED, CONTAINER	12" O.C.
jt	305	<i>Juncus tenuis</i>	Path Rush	1 GAL.	FULLY ROOTED, CONTAINER	12" O.C.
pv	105	<i>Panicum virgatum 'Shenandoah'</i>	Switchgrass	1 GAL.	FULLY ROOTED, CONTAINER	24" O.C.
ss	175	<i>Schizachyrium scoparium 'Standing Ovation'</i>	Little Bluestem	1 GAL.	FULLY ROOTED, CONTAINER	12" O.C.

1,805 TOTAL ORNAMENTAL GRASSES

PERENNIALS						
ah	135	<i>Amsonia hubrichtii</i>	Threadleaf Bluestar	1 GAL.	FULLY ROOTED, CONTAINER	18" O.C.
ao	115	<i>Aster oblongifolius 'Raydon's Favorite'</i> (syn. <i>Symphotrichum oblongifolium 'Raydon's Favorite'</i>)	Aromatic Aster	1 GAL.	FULLY ROOTED, CONTAINER	18" O.C.
ba	20	<i>Baptisia australis</i>	False Blue Indigo	1 GAL.	FULLY ROOTED, CONTAINER	24" O.C.
ed	25	<i>Eupatorium dubium 'Baby Joe'</i> (syn. <i>Eutrochium dubium</i>)	Joe Pye Weed	1 GAL.	FULLY ROOTED, CONTAINER	24" O.C.
pd	615	<i>Phlox divaricata 'May Breeze'</i>	Wild Blue Phlox	1 GAL.	FULLY ROOTED, CONTAINER	12" O.C.
pm	100	<i>Pycnanthemum muticum</i>	Mountain Mint	1 GAL.	FULLY ROOTED, CONTAINER	18" O.C.
so	70	<i>Solidago odora</i>	Sweet Goldenrod	1 GAL.	FULLY ROOTED, CONTAINER	18" O.C.

1,080 TOTAL PERENNIALS

BULBS						
al		<i>Allium Lucy Ball</i>	Giant Flowering Onion	TOP QUALITY	CLEAN, DRY BULB	IN FIELD
cs		<i>Camassia Sacajawea</i>	Camassia	TOP QUALITY	CLEAN, DRY BULB	IN FIELD
ls		<i>Liatris spicata</i>	Gayfeather	TOP QUALITY	CLEAN, DRY BULB OR 4" POT	IN FIELD

150 TOTAL BULBS

PROJECT BUDGET

PROJECTED CONSTRUCTION COSTS *(Updated 12/16/2021)*

Provided by Becker & Frondorf, project Cost Estimators

Demolition & Earthwork	\$ 68,510
Hardscape & Pavement Graphics	\$ 191,400
Play & Sports Equipment	\$ 158,330
Site Furnishings	\$ 110,220
Landscape / Planting	\$ 132,310

Subtotal	\$ 660,770
----------	------------

General Conditions / OH&P (20%)	\$ 132,230
Bond (3%)	\$ 24,000
Contingency (5%)	\$ 41,000
Escalation (2.7%)	\$ 23,000

Total	\$ 881,000
--------------	-------------------

FUNDING SOURCES

William Penn Foundation	\$ 801,500
-------------------------	------------