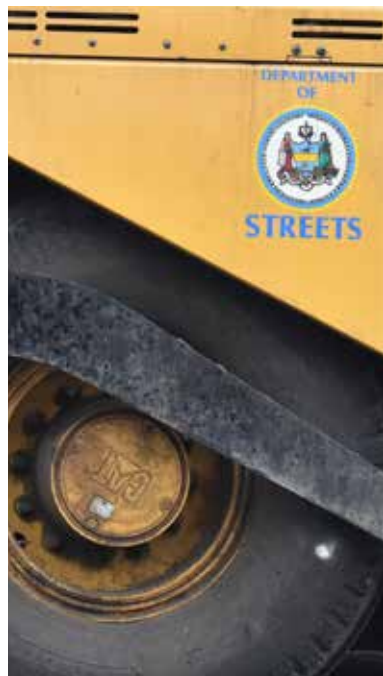




**STREETS**  
PHILADELPHIA

# Streets Paving Program and List





# Foreword

The Streets Department's mission is to provide clean, green and safe streets. Our goal is to maintain Philadelphia streets in a state of good repair that allows for safe and efficient travel for all users including pedestrians, cyclists and motorists. The Department's mission supports the Mayor's Vision Zero goal which aims to reduce traffic-related deaths and severe injuries to zero on Philadelphia streets by 2030, while increasing safety, health and mobility for all. The paving program is also a key initiative under CONNECT, the City of Philadelphia's Strategic Transportation plan for the next seven years and supports the City's vision of a transportation system that benefits everyone.

Street paving is a very complex process and we know it can be an inconvenience to residents, businesses and visitors which is why it is imperative to keep the public informed and provide updates during each paving phase. Therefore, the Streets Department is pleased to present its annual paving

guide program titled, "Paving Program and List". It provides a list of city streets to be paved and a step-by-step guide on the entire paving process including detailed information during each stage – from the selection of streets to be resurfaced; to the completion of a newly paved roadway.

The Streets Department is committed to providing Philadelphia residents and visitors with smooth and safe streets in every neighborhood. By prioritizing safety in street design, the Streets Department's repaving program supports Vision Zero's goals.

**LEARN MORE:**  
[www.VisionZeroPhl.com](http://www.VisionZeroPhl.com)

# Table Of Contents

---

Paving Overview	4
Selection Process	5
Paving Process	5
Street Milling	6
Street Adjustments	6
Street Paving	7
Street Line Striping	7
Paving Cycle	7
2021 Paving Program Map	8
Community Outreach	9
Frequently Asked Questions	10
Paving List Explained	11
2021 Paving List	12
<hr/>	
Appendix	27
A. Map - Local Streets in Philadelphia	28
B. Map - Federal Aid for Municipalities Routes	29
C. Map - PennDOT State Routes	30
D. List of State Routes in Philadelphia County	31



# Paving Overview

Philadelphia has 2,575 roadway miles throughout its geographic boundaries. The streets network in Philadelphia includes 2,180 miles of city streets, 35 miles of roads within Fairmount Park and 360 miles of state highways. The Transportation Division constructs, repairs, and maintains City streets by determining the location, time, method, and manner for street resurfacing and reconstruction. State roads are managed and maintained by the Pennsylvania Department of Transportation (PennDOT). Appendix A illustrates the locations of roadways in the City Local Network. Appendix B is a map and list of state routes maintained and resurfaced by PennDot.

The City's inventory also includes many roadways that are funded under the Federal Aid for Municipalities Highway Program (FAM routes). The City contracts FAM routes to private contractors to perform reconstruction and resurfacing work. As existing sections of the Federal-aid highways deteriorate, certain repair, reconstruction, and rehabilitation projects become eligible for Federal aid. Appendix C illustrates the locations of Federal Aid Roadways (FAM) in the City of Philadelphia.

According to national standards the City needs to pave a minimum of 131 miles of roadway annually, to continually maintain streets in a state of good repair. Over the years the Streets Department has been challenged to meet the goal of 131 repaving miles. Philadelphia's harsh weather climate conditions causes rapid deterioration and increased defects on roadways. The City also must comply with federal mandates to install ADA (American with Disability Act) ramps wherever repaving is performed without additional funding. These challenges combined with the 2008 recession caused decreased paving across the city.

Mayor Kenney has made street paving a high priority in his Administration and has provided over \$317 million of funding support over a six-year period for road reconstruction and resurfacing, and installation of ADA ramps. In FY22 alone the Administration has made an investment of \$132.2 million to address the condition and quality of our streets. This is the largest single-year investment in the City's history, and will help workers, residents, and visitors access their destinations reliably and safely.

# Street Selection Process

The Streets Department's paving list is generated annually and refined during the winter months in preparation for resurfacing activities that begin in the spring and continue through the fall of each year weather permitting. The Department compiles the paving program list by prioritizing streets based on an index rating and national industry standards for municipal streets. Streets that exhibit certain signs of roadway failure, damage or deterioration will generally receive the most consideration for maintenance, repair and resurfacing. Vehicle traffic counts and crash ratios are also considered. Other factors include available funding sources, storm water control needs, and future utility and construction projects.

The Department maintains a database with the paving history for each block as well as records of inspections on road conditions. The Department uses an adaptation of the Pavement Condition Index (PCI) survey procedure developed by the U.S. Army Corps of Engineers. A score ranging from 0 (failed) to 100 (excellent) is determined by rating distresses while riding in a vehicle at a slow speed. Surveys of each block determine severity level (low, medium, high) of each distress (like cracking and rutting) and estimates the extent of each. The Department has a system to run budget scenario analysis of the PCI data to recommend streets to include in the paving program.

The Department also maintains records of repaired potholes, utility and plumber ditch restorations, and emergency utility excavations for each block. Streets coordinates with the Philadelphia Water Department (PWD), PGW, and other utilities to compare the proposed paving program against their planned utility capital improvement programs. GIS mapping technology is used to overlay these programs on a map to minimize conflicts. Regular meetings are scheduled with PWD and PGW to discuss programs and coordination efforts.

# Street Paving Process

After the paving schedule is set, the streets are ready to be paved. The work to repair and improve roadways ranges from pothole patching to resurfacing to road reconstruction. A resurfacing project typically includes removal of the top layer of current asphalt and placement of a new layer of asphalt. As needed, separate contracts for upgrades to federally required ADA curb ramps are bid. New curbs and sidewalks are not included in resurfacing projects. Every street is different, so all resurfacing projects vary in scope, cost, and time to complete. In addition, any work in the process may be delayed in the event of inclement weather or special events.

Once the paving season begins the Streets Department notifies the public of upcoming paving work on each block. The Department will post the Paving Program Schedule on its website [phila.gov/paving](http://phila.gov/paving) and provide notifications of specific work performed on each block. Residents can sign up to receive text alerts by visiting [phila.gov/ready](http://phila.gov/ready). Residents can opt-in to receive alerts specific to Streets Department services by registering online.

For each phase of the paving process, contractors are required to post temporary "No Parking" signs on each block 48 hours in advance of the work. If motorists do not move their car at the required time, the vehicle will be towed to a nearby location. Local police districts are provided with a list of the vehicle locations. Residents will still have access to their driveways and be permitted to park on the block after the work is completed each day.

## Step 1 Milling

The City's paving program is completed using a combination of private contractor and city forces. Private contractors are responsible for milling.

Milling is the process of grinding off the top layer of asphalt or surface of a roadway. This is usually done in preparation for paving. Although the Streets Department takes steps to minimize the inconvenience, milling requires trucks and specialized machinery to remove the asphalt. On-street parking is prohibited during this work. "No parking" signs indicating the hours for the restrictions will be posted. Vehicles will still have access in and out of driveways. Contractors will, if needed, tow vehicles to a nearby street, so it is important to not park on a milled street that is about to be repaved.

Contractors, will if needed, tow vehicles to a nearby street, so it is important to not park on a street that is about to be milled.

## Step 2 Street Adjustments

After asphalt is milled off, utility manholes and castings are prepped and/or replaced by the contractor. Contractors must post new "No Parking" signs with the dates for the prep work.

Adjustments to utility valve boxes and manholes may be necessary prior to performing the resurfacing operations on a project. These adjustments are normally simple and take only a matter of hours but complex adjustments can take up to several days to complete. The adjustment can normally be accomplished without interruption of service to the property owners. However, if a situation arises that requires the Streets Department to temporarily interrupt water or sewer service, proper notifications are provided to the property owners.

The Department initiated a Master Casting Adjustment Program with the larger private utilities (PGW, PECO, and Verizon) to reduce the average number of days this step adds to the paving process to reduce the inconvenience to the public.

# 5-Week Process

## 1 Week - MILLING



## 1 Week - ADJUSTMENTS



## Step 3 Street Paving

Contractors notify City crews after the streets are milled and prepped for paving.

Street repaving provides a new layer of asphalt surface on the street to protect the underlying road structure and improve the quality of the ride. Prior to resurfacing some streets, a tar-like tack coat material is applied. This tar-like material seeps into the cracks of the underlying pavement, sealing the existing pavement and helps in bonding the new surface course. Unless delayed by weather or special events, the paving will occur within a few weeks of the milling. Paving is done in the following steps:

- a. Application of a sticky, tar-like layer called tack coat, which helps the asphalt adhere to the roadway. Residents should avoid driving or walking on tack coat
- b. Next, a new layer of asphalt is laid down on the pavement with paving machines
- c. Finally, rollers follow the paving equipment to smooth the asphalt
- d. Joints and curblines are sealed with a liquid asphalt

City paving crews complete the overlay of asphalt and the installation of pavement markings and crosswalks. City crews will repost “No Parking” signs announcing the dates they will close the street for each paving step. Once again residents are required to move their car during these workdays.

## Step 4 Street Line Striping

Road surface markings are used on paved roadways to provide guidance and information to drivers and pedestrians. Uniformity of the markings is an important factor in minimizing confusion and uncertainty about their meaning, and efforts exist to standardize such markings across borders. They can be used to delineate traffic lanes, bike lanes, inform motorists and pedestrians, serve as noise generators when run across a road, or attempt to wake a sleeping driver when installed in the shoulders of a road. Road surface markings can also indicate regulations for parking and stopping.

The installation of placement markings and crosswalks is the final phase. City crews post “No Parking” signs for portions of the street where markings are being applied. Striping is done over a series of days / weeks utilizing several city crews:

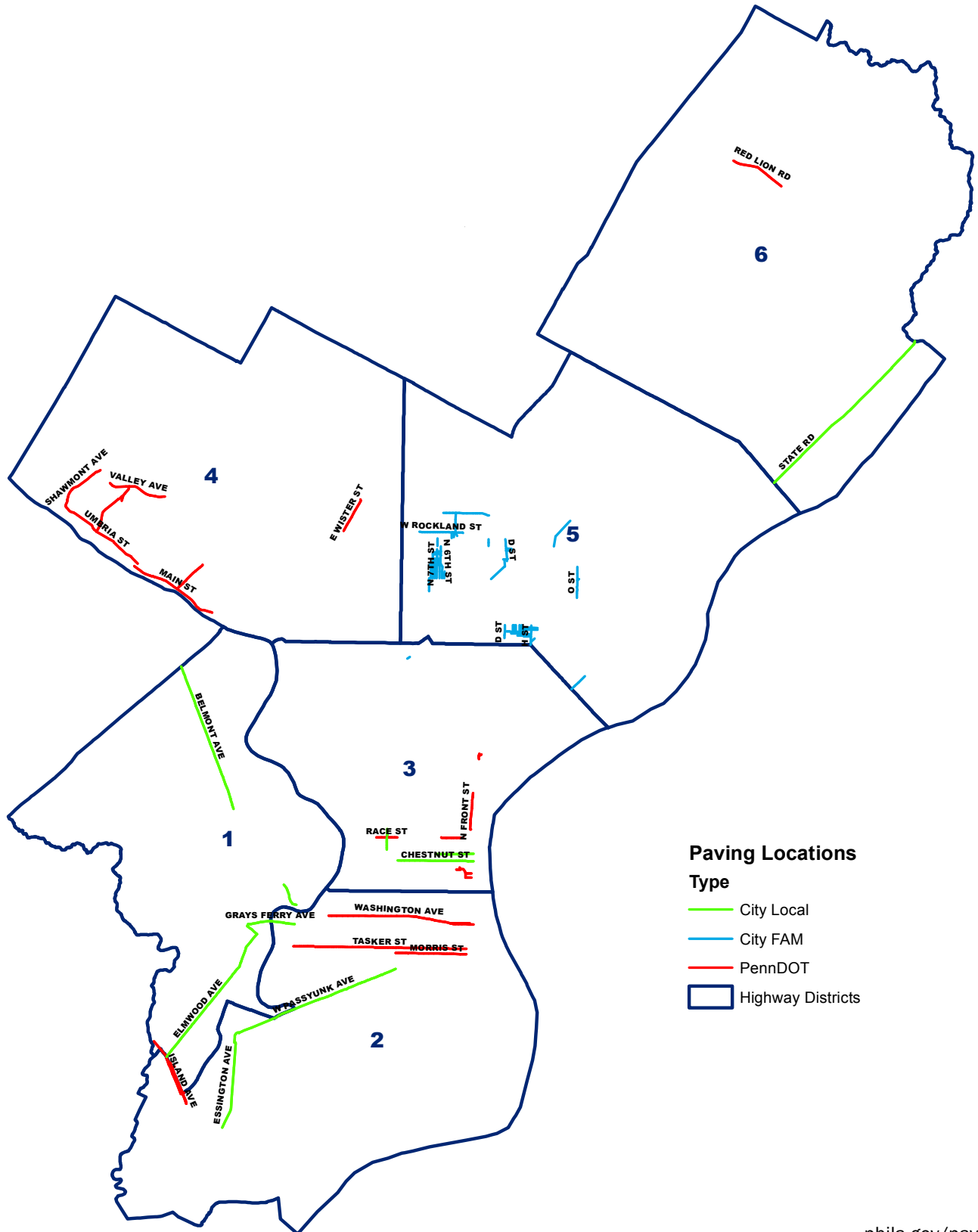
- a. Temporary layout lines are measured and installed to show where the permanent marking locations should be placed
- b. The permanent striping lines are installed at crosswalks
- c. The long lines at the edge and center of street are installed
- d. Arrows and other directional indicators are the final line striping markings installed
- e. For some bike lanes, green paint is applied

# - Street Paving Cycle

**3 Weeks** - PAVING & LINE STRIPING



# 2021 Paving Program



### Paving Locations Type

- City Local
- City FAM
- PennDOT
- Highway Districts



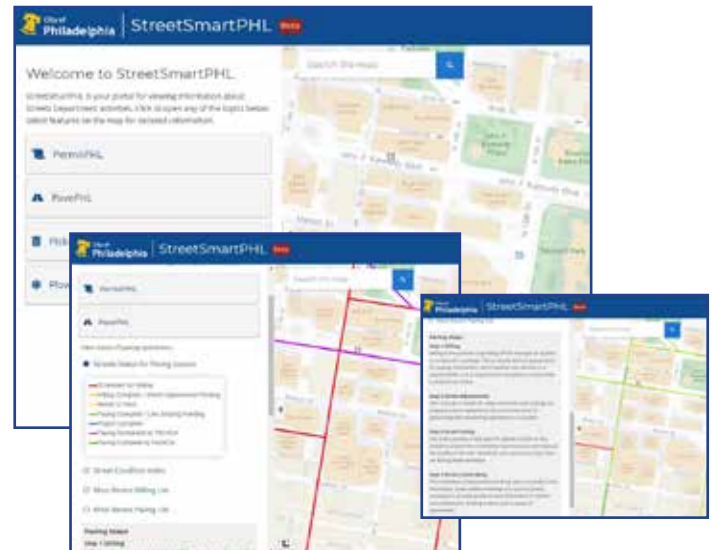
# Community Outreach

To make the paving process more transparent, the Streets Department has developed additional tools to keep residents informed of what to expect when their street is being repaved. As an additional means of notification, door hangers will be distributed by Streets Department crews and contractors. Residents can stay updated on the paving process of their block at [StreetSmartPHL.phila.gov](http://StreetSmartPHL.phila.gov) using the [PavePHL](#) app.



## Door Hangers

As part of its paving notification process, Streets Department contractors will place door hangers on residents vehicles or doors when a block has been scheduled for paving. The door hangers will be placed prior to the beginning of paving to give residents proper notification to move their vehicles.



## StreetSmartPHL

Residents can stay updated on the progress of the paving of their street using the [PavePHL](#) tool, the City's web map paving tracker which allows residents to go online and view the progress of a street scheduled for paving. It is one of the four components housed on the [StreetSmartPHL.phila.gov](http://StreetSmartPHL.phila.gov) platform which allows the Streets Department to communicate to the public about some of its most prominent and visible core services. The platform houses four components: [PavePHL](#), [PermitPHL](#), [PickupPHL](#) and [PlowPHL](#).

The StreetSmartPHL platform answers the question, "Are you Street Smart?" by connecting residents and stakeholders to real-time information related to permits, paving, snow plowing, and daily trash and recycling collections. StreetSmartPHL is the City's first online "smart" tool designed to give residents, visitors and businesses direct access to the Streets Department's core services. The site is in its beta phase. Feedback about its use and/or how the tool can be improved is encouraged.



# Frequently Asked Questions

## How are residents notified about paving work?

When paving work is expected on a block residents are notified through the following means:

- Posted temporary “No Parking” signs stating specified dates and times when vehicles must be relocated. This will prevent the need for vehicles to be towed, as well as prevent delays in the project. If a vehicle is towed, residents should contact their local Police District for the location of the vehicle. A complete list of Police Districts can be found at [www.phillypolice.com](http://www.phillypolice.com).
- Press releases distributed with the complete list of scheduled streets; special press releases distributed for high-traffic areas and streets being resurfaced overnight.
- Paving Program schedule posted at [www.phila.gov/paving](http://www.phila.gov/paving)
- Door hangers place on vehicles or doors to notify residents when paving will take place.
- Text alerts to residents who opt-in at [phila.gov/ready](http://phila.gov/ready). Receive customized alerts on Streets Department services by registering online.
- Announcements posted on Nextdoor social site
- On social media follow @PhilaStreets

## How long is the paving process?

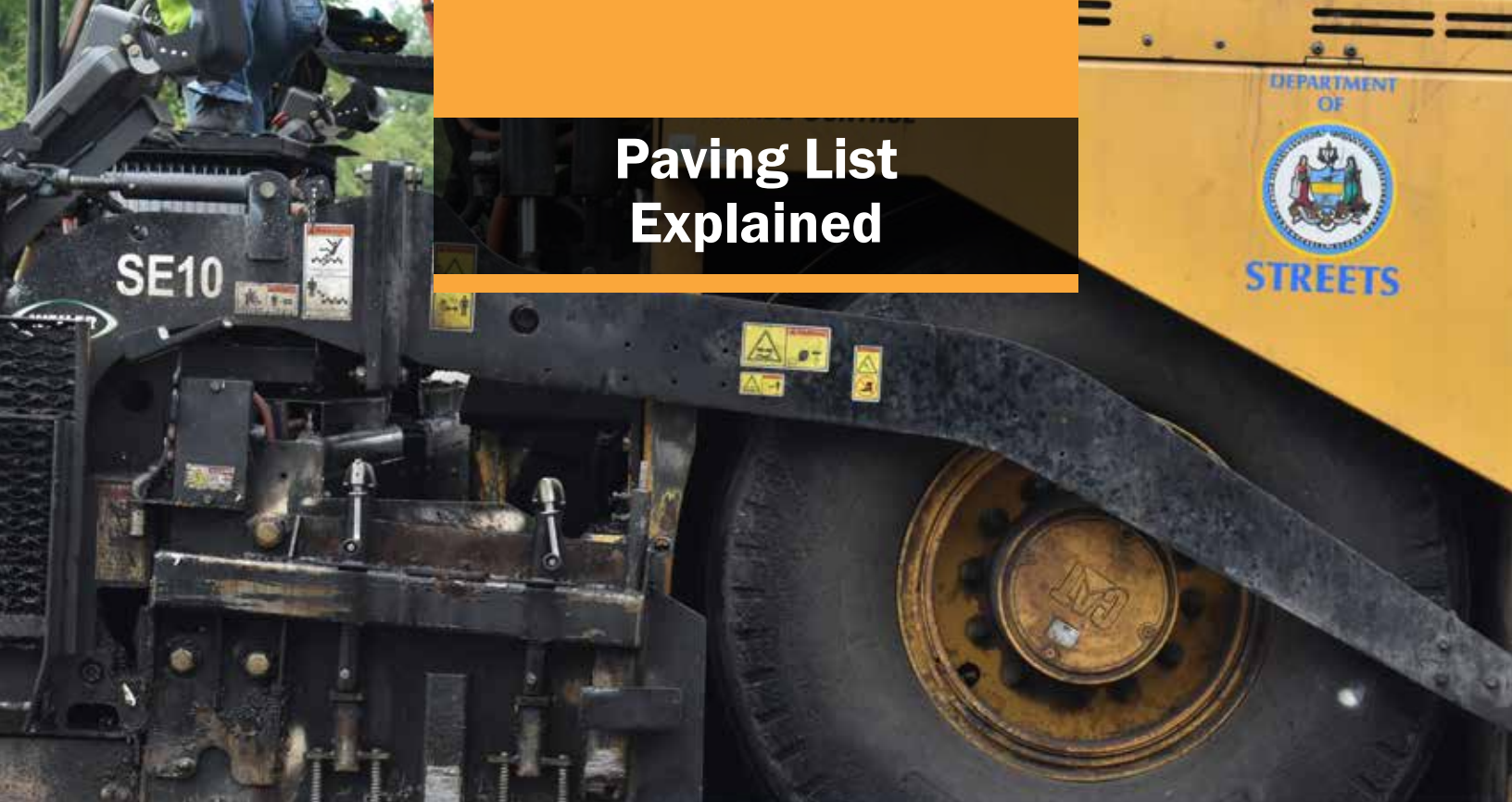
The entire paving operation is completed over a period of three-to-five weeks from the time work begins. The anticipated time to complete work on each street segment varies and is dependent on the length and width of the street. Each step takes place in separate activities over the course of one to two days.

## Can the timeline for completed paving operations be altered?

The timeline for paving operations may change depending upon weather conditions and area special events. Emergency utility work can also alter the paving schedule. We understand paving operations can be disruptive. We appreciate residents support and patience as we work to improve city streets.

## Will sidewalks be replaced during paving operations?

New curbs and sidewalks are not included in paving operations. Prior to the repaving process photos of existing conditions are taken as the City and/or its contractor cannot be held responsible for any pre-existing damaged or illegally capped curbs. However, if a resident finds there has been curb damage during repaving, please contact 311 to report.



# Paving List Explained

## A. Paving Program

The paving program identifies the funding source and or entity leading the paving effort for a particular block. The three included in the Paving List are: City Local (100 percent City funds); Federal Aid for Municipalities (FAM Routes funded with a mix of city, state and federal funds) and PennDOT (State Routes funded and paved by Pennsylvania's Department of Transportation).

## B. Hundred Block

The hundred block provides the exact segment of the street being paved

## C. On\_Street

On Street identifies the street to be paved

## D. From\_Street

Provides beginning boundary of the street being paved

## E. To\_Street

Provides the ending boundary of the street being paved

## F. Council

Identifies the Philadelphia City Council District

## G. Potholes

Provides the number of repaired potholes and asphalt repairs in last 3 years

## H. Ditches

Provides the number of plumber and utility ditches repaired over the last 3 years

## I. EUNs

EUNs identifies the number of Emergency Utility Notifications or Excavations made by Public Utilities in the street / on sidewalks over the last 3 years

## J. CPI

CPI provides the paving condition using an index rating that estimates the current condition of a roadway surface.

# 2021 Paving List

HUNDRED	STREET	FROM	TO	CITY COUNCIL DISTRICT	POTHoles	DITCHES	EMERGENCY UTILITY WORK	ROADWAY RESURFACING RATING	PAVING PROGRAM
200	38TH PARALLEL PL	DOCK ST	SPRUCE ST	1	0	0	0	77	PENNDOT
0	ADAMS AVE	E ROOSEVELT BLVD	ADAMS AVE	7	2	0	0	98	CITY FAM
800	ADAMS AVE	E ROOSEVELT BLVD	ADAMS AVE	7	0	0	0	18	CITY FAM
800	ADAMS AVE	ADAMS AVE	RAMONA AVE	7	13	0	0	36	CITY FAM
900	ADAMS AVE	RAMONA AVE	ARROTT ST	7	15	1	0	20	CITY FAM
900	ADAMS AVE	ARROTT ST	CASTOR AVE	7	2	0	2	36	CITY FAM
900	ARROTT ST	ADAMS AVE	CASTOR AVE	7	8	2	0	4	CITY FAM
200	BELGRADE ST	FRANKFORD AVE	MARLBOROUGH ST	5	0	0	4	71	PENNDOT
800	BELMONT AVE	LANCASTER AVE	WESTMINSTER AVE	3	1	1	1	64	CITY LOCAL
900	BELMONT AVE	MERION AVE	PENNSGROVE ST	3	0	0	0	64	CITY LOCAL
900	BELMONT AVE	WESTMINSTER AVE	MERION AVE	3	1	1	0	64	CITY LOCAL
900	BELMONT AVE	PENNSGROVE ST	OTTER ST	3	0	0	0	64	CITY LOCAL
900	BELMONT AVE	OTTER ST	WYALUSING AVE	3	1	0	0	64	CITY LOCAL
900	BELMONT AVE	WYALUSING AVE	WYALUSING AVE	3	0	0	0	64	CITY LOCAL
1000	BELMONT AVE	WYALUSING AVE	MANTUA AVE	3	20	2	0	64	CITY LOCAL
1000	BELMONT AVE	MANTUA AVE	W GIRARD AVE	3	3	3	0	64	CITY LOCAL
1200	BELMONT AVE	W STILES ST	W THOMPSON ST	3	0	0	0	78	CITY LOCAL
1200	BELMONT AVE	W GIRARD AVE	W STILES ST	3	0	0	0	78	CITY LOCAL
1300	BELMONT AVE	W THOMPSON ST	LEIDY AVE	3	1	1	0	78	CITY LOCAL
1500	BELMONT AVE	LEIDY AVE	VIOLA ST	3	1	0	0	78	CITY LOCAL
1500	BELMONT AVE	VIOLA ST	PARKSIDE AVE	3	1	0	3	78	CITY LOCAL
1600	BELMONT AVE	PARKSIDE AVE	S CONCOURSE DR	4	7	2	2	78	CITY LOCAL
1600	BELMONT AVE	LANSDOWNE DR	STATES DR	4	2	3	0	78	CITY LOCAL
1600	BELMONT AVE	AVENUE OF THE REPUBLIC	LANSDOWNE DR	4	1	1	0	78	CITY LOCAL
1600	BELMONT AVE	S CONCOURSE DR	AVENUE OF THE REPUBLIC	4	3	1	0	78	CITY LOCAL
1700	BELMONT AVE	STATES DR	MONTGOMERY DR	4	4	0	1	78	CITY LOCAL
1800	BELMONT AVE	S GEORGES HILL DR	WYNNEFIELD AVE	4	4	4	0	78	CITY LOCAL
1900	BELMONT AVE	WYNNEFIELD AVE	N GEORGES HILL DR	4	5	0	0	78	CITY LOCAL
2000	BELMONT AVE	N GEORGES HILL DR	PARKSIDE AVE	4	0	0	0	78	CITY LOCAL
2100	BELMONT AVE	EDGLEY AVE	MONUMENT RD	4	1	0	0	78	CITY LOCAL
2200	BELMONT AVE	MONUMENT RD	HAYES MANOR	4	1	2	0	78	CITY LOCAL
2300	BELMONT AVE	HAYES MANOR	CONSHOHOCKEN AVE	4	0	0	0	78	CITY LOCAL
2700	BELMONT AVE	CONSHOHOCKEN AVE	SHERWOOD RD	4	0	0	0	78	CITY LOCAL
2700	BELMONT AVE	SHERWOOD RD	FORD RD	4	0	0	0	78	CITY LOCAL
2800	BELMONT AVE	FORD RD	CITY AVE	4	0	4	0	78	CITY LOCAL
0	CHESTNUT ST	S CHRISTOPHER COLUMBUS BLVD RAMP	S FRONT ST	1	2	0	0	80	CITY LOCAL
100	CHESTNUT ST	LETITIA ST	S 2ND ST	1	0	8	3	60	CITY LOCAL
100	CHESTNUT ST	S FRONT ST	LETITIA ST	1	3	1	3	74	CITY LOCAL
200	CHESTNUT ST	BANK ST	S 3RD ST	1	2	0	20	80	CITY LOCAL
200	CHESTNUT ST	S 2ND ST	STRAWBERRY ST	1	3	1	0	80	CITY LOCAL

## 2021 Paving List

HUNDRED	STREET	FROM	TO	CITY COUNCIL DISTRICT	POTHLES	DITCHES	EMERGENCY UTILITY WORK	ROADWAY RESURFACING RATING	PAVING PROGRAM
200	CHESTNUT ST	STRAWBERRY ST	BANK ST	1	0	0	4	80	CITY LOCAL
300	CHESTNUT ST	S 3RD ST	S 4TH ST	1	0	0	0	80	CITY LOCAL
400	CHESTNUT ST	S 4TH ST	S INDEPENDENCE MALL E	1	3	0	0	80	CITY LOCAL
500	CHESTNUT ST	S INDEPENDENCE MALL E	S INDEPENDENCE MALL W	1	2	0	0	80	CITY LOCAL
600	CHESTNUT ST	S INDEPENDENCE MALL W	S 7TH ST	1	4	0	0	80	CITY LOCAL
700	CHESTNUT ST	S 7TH ST	S 8TH ST	1	1	0	0	80	CITY LOCAL
800	CHESTNUT ST	S 8TH ST	S 9TH ST	1	5	3	0	80	CITY LOCAL
900	CHESTNUT ST	S 9TH ST	S 10TH ST	1	3	0	0	80	CITY LOCAL
1000	CHESTNUT ST	S 10TH ST	S 11TH ST	1	4	4	0	80	CITY LOCAL
1100	CHESTNUT ST	S 11TH ST	S 12TH ST	1	4	0	1	80	CITY LOCAL
1200	CHESTNUT ST	S 12TH ST	S 13TH ST	1	4	1	2	80	CITY LOCAL
1300	CHESTNUT ST	S JUNIPER ST	S BROAD ST	1	1	0	0	80	CITY LOCAL
1300	CHESTNUT ST	S 13TH ST	S JUNIPER ST	1	1	1	3	80	CITY LOCAL
3400	CRYSTAL ST	E ONTARIO ST	E TIOGA ST	7	0	13	5	63	CITY FAM
3300	D ST	E CORNWALL ST	E ONTARIO ST	7	1	0	0	16	CITY FAM
3300	D ST	E WESTMORELAND ST	E CORNWALL ST	7	2	0	0	16	CITY FAM
3400	D ST	E ONTARIO ST	E TIOGA ST	7	3	3	0	68	CITY FAM
4400	D ST	E WINGOHOCKING ST	WHITAKER AVE	7	0	0	0	70	CITY FAM
4500	D ST	E COURTLAND ST	E WINGOHOCKING ST	7	5	0	6	59	CITY FAM
4600	D ST	E LURAY ST	BINGHAM ST	7	0	1	0	59	CITY FAM
4600	D ST	E COURTLAND ST	E THELMA ST	7	1	0	0	68	CITY FAM
4600	D ST	E THELMA ST	E LURAY ST	7	0	0	0	78	CITY FAM
4700	D ST	E MENTOR ST	E LOUDON ST	7	2	0	0	68	CITY FAM
4700	D ST	E WYOMING AVE	E MENTOR ST	7	2	0	0	68	CITY FAM
4800	D ST	E ELEANOR ST	E ROCKLAND ST	7	0	0	0	75	CITY FAM
4800	D ST	E LOUDON ST	E ELEANOR ST	7	1	0	0	68	CITY FAM
4900	D ST	E ROCKLAND ST	E RUSCOMB ST	7	4	1	2	73	CITY FAM
5000	D ST	E RUSCOMB ST	E ROOSEVELT BLVD	7	0	0	1	68	CITY FAM
0	DOCK ST	S FRONT ST	38TH PARALLEL PL	1	0	0	0	79	PENNDOT
0	DOCK ST	S CHRISTOPHER COLUMBUS BLVD	S FRONT ST	1	1	0	0	34	PENNDOT
100	DOCK ST	38TH PARALLEL PL	S 2ND ST	1	1	0	0	64	PENNDOT
200	DOCK ST	THOMAS PAINE PL	WALNUT ST	1	0	0	0	64	PENNDOT
200	DOCK ST	S 2ND ST	THOMAS PAINE PL	1	0	2	0	64	PENNDOT
0	DOMINO LN	RIDGE AVE	MATTHIAS ST	4	5	0	0	30	PENNDOT
300	DOMINO LN	UMBRIA ST	FOWLER ST	4	44	1	0	20	PENNDOT
400	DOMINO LN	FOWLER ST	RIDGE AVE	4	19	0	0	10	PENNDOT
500	DOMINO LN	MATTHIAS ST	SHALKOP ST	4	0	0	0	73	PENNDOT
500	DOMINO LN	RIDGE AVE	MATTHIAS ST	4	4	0	0	63	PENNDOT
500	DOMINO LN	SHALKOP ST	VALLEY AVE	4	5	0	2	34	PENNDOT
900	DYRE ST	E GODFREY AVE	CASTOR AVE	7	2	0	2	23	CITY FAM
700	E CORNWALL ST	F ST	G ST	7	1	0	1	46	CITY FAM
800	E CORNWALL ST	G ST	H ST	7	1	4	2	39	CITY FAM
900	E GODFREY AVE	E ROOSEVELT BLVD	DYRE ST	7	0	0	0	29	CITY FAM
900	E GODFREY AVE	DYRE ST	HAWORTH ST	7	0	0	0	22	CITY FAM
500	E LURAY ST	D ST	WHITAKER AVE	7	3	0	0	54	CITY FAM
400	E MENTOR ST	C ST	D ST	7	5	7	0	54	CITY FAM

# 2021 Paving List

HUNDRED	STREET	FROM	TO	CITY COUNCIL DISTRICT	POTHLES	DITCHES	EMERGENCY UTILITY WORK	ROADWAY RESURFACING RATING	PAVING PROGRAM
500	E ONTARIO ST	HARTVILLE ST	E ST	7	0	2	1	68	CITY FAM
500	E ONTARIO ST	RORER ST	HARTVILLE ST	7	0	0	0	68	CITY FAM
600	E ONTARIO ST	CRYSTAL ST	TAMPA ST	7	0	0	1	76	CITY FAM
600	E ONTARIO ST	KEIM ST	F ST	7	0	0	0	73	CITY FAM
600	E ONTARIO ST	TAMPA ST	KEIM ST	7	0	0	0	76	CITY FAM
600	E ONTARIO ST	E ST	CRYSTAL ST	7	0	0	0	76	CITY FAM
700	E ONTARIO ST	F ST	WEYMOUTH ST	7	1	0	0	89	CITY FAM
700	E ONTARIO ST	REACH ST	G ST	7	3	4	3	64	CITY FAM
700	E ONTARIO ST	WEYMOUTH ST	REACH ST	7	0	21	0	84	CITY FAM
800	E RUSSELL ST	G ST	H ST	7	0	11	0	46	CITY FAM
900	E RUSSELL ST	H ST	I ST	7	6	0	3	63	CITY FAM
800	E SCHILLER ST	G ST	H ST	7	0	3	2	39	CITY FAM
900	E SCHILLER ST	H ST	I ST	7	0	2	7	54	CITY FAM
600	E THAYER ST	E ST	F ST	7	1	2	12	63	CITY FAM
700	E THAYER ST	F ST	G ST	7	1	7	1	54	CITY FAM
800	E THAYER ST	G ST	H ST	7	2	0	0	54	CITY FAM
500	E THELMA ST	D ST	WHITAKER AVE	7	0	0	6	67	CITY FAM
3200	E THOMPSON ST	E ALLEGHENY AVE	E MADISON ST	6	0	2	0	22	CITY FAM
3200	E THOMPSON ST	E MADISON ST	E WESTMORELAND ST	6	0	0	0	32	CITY FAM
3300	E THOMPSON ST	E WESTMORELAND ST	E ONTARIO ST	1	5	3	0	22	CITY FAM
400	E WINGOHOCKING ST	DEAD END WEST	HURLEY ST	7	1	0	0	81	CITY FAM
400	E WINGOHOCKING ST	HURLEY ST	D ST	7	0	0	0	68	CITY FAM
500	E WINGOHOCKING ST	D ST	WHITAKER AVE	7	0	0	0	87	CITY FAM
0	E WISTER ST	GERMANTOWN AVE	LENA ST	8	7	5	3	97	PENNDOT
0	E WISTER ST	LENA ST	WAKEFIELD ST	8	1	0	0	97	PENNDOT
200	E WISTER ST	WAKEFIELD ST	BAYNTON ST	8	4	0	0	97	PENNDOT
300	E WISTER ST	SHELDON ST	RUBICAM ST	8	0	0	0	97	PENNDOT
300	E WISTER ST	SHELDON ST	SHELDON ST	8	0	0	0	97	PENNDOT
300	E WISTER ST	BAYNTON ST	SHELDON ST	8	10	3	0	97	PENNDOT
400	E WISTER ST	RUFE ST	BELFIELD AVE	8	3	0	0	97	PENNDOT
400	E WISTER ST	RUBICAM ST	RUFE ST	8	6	1	0	97	PENNDOT
4700	ELLA ST	E WYOMING AVE	E MENTOR ST	7	0	0	0	71	CITY FAM
4700	ELLA ST	E MENTOR ST	E LOUDON ST	7	1	0	0	84	CITY FAM
5500	ELMWOOD AVE	LINDBERGH BLVD	S 56TH ST	2	0	0	0		CITY LOCAL
5600	ELMWOOD AVE	S FRAZIER ST	S 57TH ST	2	0	0	0	64	CITY LOCAL
5600	ELMWOOD AVE	S 56TH ST	S ITHAN ST	2	1	0	1	64	CITY LOCAL
5600	ELMWOOD AVE	S ITHAN ST	S FRAZIER ST	2	0	0	0	64	CITY LOCAL
5700	ELMWOOD AVE	S 57TH ST	S ALDEN ST	2	1	0	2	64	CITY LOCAL
5700	ELMWOOD AVE	S ALDEN ST	S 58TH ST	2	0	0	0	64	CITY LOCAL
5800	ELMWOOD AVE	S 58TH ST	S WANAMAKER ST	2	0	0	1	64	CITY LOCAL
5800	ELMWOOD AVE	S WANAMAKER ST	S 59TH ST	2	0	0	0	64	CITY LOCAL
5900	ELMWOOD AVE	S 59TH ST	S EDGEWOOD ST	2	0	0	2	64	CITY LOCAL
6000	ELMWOOD AVE	S MILLICK ST	S MILLICK ST	2	0	0	0	64	CITY LOCAL
6000	ELMWOOD AVE	S EDGEWOOD ST	S EDGEWOOD ST	2	0	0	0	64	CITY LOCAL
6000	ELMWOOD AVE	S MILLICK ST	S 61ST ST	2	0	0	0	64	CITY LOCAL
6000	ELMWOOD AVE	S EDGEWOOD ST	S MILLICK ST	2	1	4	0	64	CITY LOCAL
6100	ELMWOOD AVE	S ROBINSON ST	S 62ND ST	2	0	0	0	64	CITY LOCAL
6100	ELMWOOD AVE	S DEWEY ST	S ROBINSON ST	2	0	0	3	64	CITY LOCAL
6100	ELMWOOD AVE	S 61ST ST	S DEWEY ST	2	0	1	3	64	CITY LOCAL

# 2021 Paving List

HUNDRED	STREET	FROM	TO	CITY COUNCIL DISTRICT	POTHLES	DITCHES	EMERGENCY UTILITY WORK	ROADWAY RESURFACING RATING	PAVING PROGRAM
6200	ELMWOOD AVE	S FELTON ST	S 63RD ST	2	0	0	2	64	CITY LOCAL
6200	ELMWOOD AVE	S 62ND ST	S 62ND ST	2	1	0	0	64	CITY LOCAL
6200	ELMWOOD AVE	S 62ND ST	S FELTON ST	2	0	0	0	64	CITY LOCAL
6300	ELMWOOD AVE	S GROSS ST	S 64TH ST	2	0	0	0	64	CITY LOCAL
6300	ELMWOOD AVE	S 63RD ST	S GROSS ST	2	0	0	0	64	CITY LOCAL
6400	ELMWOOD AVE	S 64TH ST	S 65TH ST	2	0	1	0	64	CITY LOCAL
6500	ELMWOOD AVE	S 65TH ST	S 66TH ST	2	0	0	0	64	CITY LOCAL
6600	ELMWOOD AVE	SHIELDS ST	S 67TH ST	2	0	2	8	64	CITY LOCAL
6600	ELMWOOD AVE	S 66TH ST	SHIELDS ST	2	0	0	0	64	CITY LOCAL
6700	ELMWOOD AVE	BONNAFFON ST	HOBSON ST	2	0	0	0	64	CITY LOCAL
6700	ELMWOOD AVE	HOBSON ST	S 68TH ST	2	0	0	0	64	CITY LOCAL
6700	ELMWOOD AVE	S 67TH ST	BONNAFFON ST	2	0	0	1	64	CITY LOCAL
6800	ELMWOOD AVE	MASSEY ST	S 69TH ST	2	0	1	0	64	CITY LOCAL
6800	ELMWOOD AVE	CARROLL ST	MASSEY ST	2	0	0	0	64	CITY LOCAL
6800	ELMWOOD AVE	S 68TH ST	CARROLL ST	2	0	1	3	64	CITY LOCAL
6900	ELMWOOD AVE	S 69TH ST	S 70TH ST	2	0	0	0	64	CITY LOCAL
7000	ELMWOOD AVE	HOLBROOK ST	S 71ST ST	2	0	0	0	64	CITY LOCAL
7000	ELMWOOD AVE	S 70TH ST	HOLBROOK ST	2	0	0	0	64	CITY LOCAL
7100	ELMWOOD AVE	S 71ST ST	S 72ND ST	2	0	0	3	64	CITY LOCAL
7200	ELMWOOD AVE	S 72ND ST	LLOYD ST	2	0	0	2	64	CITY LOCAL
7200	ELMWOOD AVE	LLOYD ST	S 73RD ST	2	0	0	0	64	CITY LOCAL
7300	ELMWOOD AVE	S 73RD ST	W PASSYUNK AVE	2	0	1	0	64	CITY LOCAL
0	ESSINGTON AVE	W PASSYUNK AVE	S 67TH ST	2	0	0	0	49	CITY LOCAL
6700	ESSINGTON AVE	S 67TH ST	S 67TH ST	2	4	0	0	43	CITY LOCAL
6700	ESSINGTON AVE	WHOLESALE PRODUCE MARKET DWY	S 70TH ST	2	1	1	0	29	CITY LOCAL
6700	ESSINGTON AVE	S 67TH ST	WHOLESALE PRODUCE MARKET DWY	2	0	0	0	43	CITY LOCAL
7000	ESSINGTON AVE	S 70TH ST	BARTRAM AVE	2	2	1	0	34	CITY LOCAL
900	FILLMORE ST	E ROOSEVELT BLVD	CASTOR AVE	7	4	0	0	47	CITY FAM
1400	FRANKFORD AVE	MASTER ST	BELGRADE ST	5	1	2	4	80	PENNDOT
1400	FRANKFORD AVE	BELGRADE ST	JEFFERSON ST	5	0	6	0	80	PENNDOT
4800	GRANSBACK ST	E LOUDON ST	E ROCKLAND ST	7	1	1	0	54	CITY FAM
4900	GRANSBACK ST	E ROCKLAND ST	E RUSCOMB ST	7	2	1	3	45	CITY FAM
5000	GRANSBACK ST	E RUSCOMB ST	E ROOSEVELT BLVD	7	2	3	2	67	CITY FAM
4900	GRAYS AVE	S 49TH ST	S 51ST ST	3	3	0	0		CITY LOCAL
5100	GRAYS AVE	S 51ST ST	LINDBERGH BLVD	3	2	3	0		CITY LOCAL
1400	GRAYS FERRY AVE	S 48TH ST	PASCHALL AVE	3	1	0	0		CITY LOCAL
1400	GRAYS FERRY AVE	WOODLAND AVE	S FALLON ST	3	0	0	0		CITY LOCAL
1400	GRAYS FERRY AVE	S FALLON ST	S 48TH ST	3	0	0	0		CITY LOCAL
1500	GRAYS FERRY AVE	PASCHALL AVE	S 47TH ST	3	3	0	1		CITY LOCAL
3400	GRAYS FERRY AVE	S 34TH ST	S 35TH ST	2	5	2	0	19	CITY LOCAL
3500	GRAYS FERRY AVE	GROVE ST	FEDEX DWY	2	0	3	0	14	CITY LOCAL
3500	GRAYS FERRY AVE	S 35TH ST	S HARMONY ST	2	3	0	0	7	CITY LOCAL
3500	GRAYS FERRY AVE	S HARMONY ST	GROVE ST	2	0	0	0	35	CITY LOCAL
3600	GRAYS FERRY AVE	FEDEX DWY	S SCHUYLKILL RIVER TRL	2	2	0	0	3	CITY LOCAL
3600	GRAYS FERRY AVE	S SCHUYLKILL RIVER TRL	GRAYS FERRY AVE	2	0	0	0		CITY LOCAL
4200	GRAYS FERRY AVE	GRAYS FERRY AVE	S 47TH ST	3	0	0	0		CITY LOCAL
3200	H ST	POTTER ST	E WESTMORELAND ST	7	0	0	1	51	CITY FAM

# 2021 Paving List

HUNDRED	STREET	FROM	TO	CITY COUNCIL DISTRICT	POTHLES	DITCHES	EMERGENCY UTILITY WORK	ROADWAY RESURFACING RATING	PAVING PROGRAM
3200	H ST	E ALLEGHENY AVE	POTTER ST	7	1	2	3	36	CITY FAM
3300	H ST	E WESTMORELAND ST	E CORNWALL ST	7	2	0	0	51	CITY FAM
3300	H ST	E THAYER ST	E ONTARIO ST	7	0	0	3	51	CITY FAM
3300	H ST	E CORNWALL ST	E THAYER ST	7	0	0	2	51	CITY FAM
3400	H ST	E RUSSELL ST	E SCHILLER ST	7	0	14	0	51	CITY FAM
3400	H ST	E SCHILLER ST	E TIOGA ST	7	0	0	2	45	CITY FAM
3400	H ST	E ONTARIO ST	E RUSSELL ST	7	1	0	0	51	CITY FAM
4400	HURLEY ST	MACALESTER ST	E WINGOHOCKING ST	7	1	0	0	63	CITY FAM
0	ISLAND AVE	TANAGER ST	S 76TH ST	2	2	1	0	92	PENNDOT
0	ISLAND AVE	LINDBERGH BLVD	LINDBERGH BLVD	2	0	0	0	86	PENNDOT
0	ISLAND AVE	TANAGER ST	LINDBERGH BLVD	2	0	1	0	92	PENNDOT
0	ISLAND AVE	CHELWYNDE AVE	TANAGER ST	2	0	0	0	92	PENNDOT
0	ISLAND AVE	ELMWOOD AVE	S 74TH ST	2	0	0	2	92	PENNDOT
0	ISLAND AVE	ISLAND AVE	LINDBERGH BLVD	2	1	0	0	92	PENNDOT
0	ISLAND AVE	LINDBERGH BLVD	LINDBERGH BLVD	2	0	0	0	92	PENNDOT
0	ISLAND AVE	LINDBERGH BLVD	LINDBERGH BLVD	2	0	0	0	92	PENNDOT
0	ISLAND AVE	DICKS AVE	ISLAND AVE	2	0	0	0	92	PENNDOT
0	ISLAND AVE	ISLAND AVE	TANAGER ST	2	0	0	0	92	PENNDOT
0	ISLAND AVE	BUIST AVE	CHELWYNDE AVE	2	1	0	0	92	PENNDOT
0	ISLAND AVE	BUIST AVE	DICKS AVE	2	0	0	0	86	PENNDOT
0	ISLAND AVE	LINDBERGH BLVD	ISLAND AVE	2	0	0	0	92	PENNDOT
0	ISLAND AVE	LINDBERGH BLVD	ISLAND AVE	2	0	0	0	92	PENNDOT
0	ISLAND AVE	TANAGER ST	ISLAND AVE	2	0	0	0	92	PENNDOT
0	ISLAND AVE	ISLAND AVE	SUFFOLK AVE	2	1	0	0	92	PENNDOT
0	ISLAND AVE	LINDBERGH BLVD	LINDBERGH BLVD	2	0	0	0	92	PENNDOT
0	ISLAND AVE	LINDBERGH BLVD	LINDBERGH BLVD	2	0	0	0	92	PENNDOT
0	ISLAND AVE	S 76TH ST	LINDBERGH BLVD	2	8	0	0	92	PENNDOT
2200	ISLAND AVE	COBBS CREEK PKWY	SAYBROOK AVE	2	2	0	0		PENNDOT
2200	ISLAND AVE	SAYBROOK AVE	PASCHALL AVE	2	0	0	0		PENNDOT
2300	ISLAND AVE	GLENMORE AVE	WHEELER ST	2	1	2	0	0	PENNDOT
2300	ISLAND AVE	PASCHALL AVE	GLENMORE AVE	2	4	2	0		PENNDOT
2400	ISLAND AVE	WHEELER ST	W PASSYUNK AVE	2	0	0	0	0	PENNDOT
2500	ISLAND AVE	THEODORE ST	BUIST AVE	2	0	0	0	92	PENNDOT
2600	ISLAND AVE	BUIST AVE	DICKS AVE	2	0	0	0	92	PENNDOT
2700	ISLAND AVE	TANAGER ST	TURNSTONE PL	2	0	0	0	86	PENNDOT
2700	ISLAND AVE	PLOVER ST	TANAGER ST	2	0	0	1	86	PENNDOT
2800	ISLAND AVE	ISLAND AVE	LINDBERGH BLVD	2	1	0	0	86	PENNDOT
2900	ISLAND AVE	LINDBERGH BLVD	SUFFOLK AVE	2	5	0	0	92	PENNDOT
3400	KEIM ST	E ONTARIO ST	E TIOGA ST	7	0	2	8	54	CITY FAM
4000	LEIPER ST	E HUNTING PARK AVE	DEAD END EAST	7	0	0	0	47	CITY FAM
5200	LINDBERGH BLVD	GRAYS AVE	GRAYS AVE	3	0	0	0	92	CITY LOCAL
5300	LINDBERGH BLVD	S 54TH ST	HARLEY ST	3	0	0	0	92	CITY LOCAL
5300	LINDBERGH BLVD	GRAYS AVE	S 54TH ST	3	0	0	0	92	CITY LOCAL
5400	LINDBERGH BLVD	WHEELER ST	ELMWOOD AVE	2	0	0	0	78	CITY LOCAL
5400	LINDBERGH BLVD	HARLEY ST	WHEELER ST	2	0	0	0	78	CITY LOCAL
1400	LOMBARD ST	S BROAD ST	S CARLISLE ST	2	4	2	0	72	CITY FAM
1400	LOMBARD ST	S CARLISLE ST	S 15TH ST	2	0	0	0	71	CITY FAM
1500	LOMBARD ST	S SYDENHAM ST	S 16TH ST	2	8	0	0	60	CITY FAM
1500	LOMBARD ST	S 15TH ST	S SYDENHAM ST	2	11	1	0	60	CITY FAM



## 2021 Paving List

HUNDRED	STREET	FROM	TO	CITY COUNCIL DISTRICT	POTHLES	DITCHES	EMERGENCY UTILITY WORK	ROADWAY RESURFACING RATING	PAVING PROGRAM
1600	LOMBARD ST	S 16TH ST	S 17TH ST	2	28	28	1	50	CITY FAM
1700	LOMBARD ST	S 17TH ST	S 18TH ST	2	6	12	4	60	CITY FAM
1800	LOMBARD ST	S 18TH ST	S 19TH ST	2	10	25	0	57	CITY FAM
1900	LOMBARD ST	S 19TH ST	S UBER ST	2	4	0	0	57	CITY FAM
1900	LOMBARD ST	S UBER ST	S 20TH ST	2	4	0	0	52	CITY FAM
2000	LOMBARD ST	S 20TH ST	S 21ST ST	2	6	0	1	60	CITY FAM
4200	MACALESTER ST	E HUNTING PARK AVE	WHITAKER AVE	7	2	1	0	42	CITY FAM
3700	MAIN ST	RIDGE AVE	SHURS LN	4	2	1	11	57	PENNDOT
4100	MAIN ST	JAMESTOWN AVE	N SCHUYLKILL RIVER TRL	4	0	0	0	79	PENNDOT
4100	MAIN ST	SHURS LN	JAMESTOWN AVE	4	4	5	7	57	PENNDOT
4100	MAIN ST	LOCK ST	PENSDALE ST	4	0	0	0	57	PENNDOT
4200	MAIN ST	RECTOR ST	ROXBOROUGH AVE	4	3	0	0	57	PENNDOT
4200	MAIN ST	ROXBOROUGH AVE	COTTON ST	4	3	0	0	57	PENNDOT
4200	MAIN ST	PENSDALE ST	RECTOR ST	4	2	1	3	57	PENNDOT
4300	MAIN ST	GRAPE ST	RING ST	4	2	0	0	58	PENNDOT
4300	MAIN ST	COTTON ST	GRAPE ST	4	0	0	4	66	PENNDOT
4300	MAIN ST	RING ST	LEVERING ST	4	1	0	0	51	PENNDOT
4400	MAIN ST	GAY ST	CONARROE ST	4	0	0	0	71	PENNDOT
4400	MAIN ST	CARSON ST	N SCHUYLKILL RIVER TRL	4	2	3	0	57	PENNDOT
4400	MAIN ST	CONARROE ST	N SCHUYLKILL RIVER TRL	4	0	1	0	57	PENNDOT
4400	MAIN ST	LEVERING ST	GAY ST	4	1	2	0	57	PENNDOT
4500	MAIN ST	GREEN LN	N SCHUYLKILL RIVER TRL	4	6	0	0	71	PENNDOT
4500	MAIN ST	N SCHUYLKILL RIVER TRL	LEVERINGTON AVE	4	2	0	0	69	PENNDOT
0	MARKET ST	MARKET ST RAMP	N 2ND ST	1	0	0	0	94	CITY LOCAL
200	MARKET ST	BANK ST	S BODINE ST	1	0	0	0	94	CITY LOCAL
200	MARKET ST	S BODINE ST	S 3RD ST	1	2	0	0	94	CITY LOCAL
200	MARKET ST	S 2ND ST	STRAWBERRY ST	1	2	0	0	94	CITY LOCAL
200	MARKET ST	STRAWBERRY ST	BANK ST	1	1	0	0	94	CITY LOCAL
300	MARKET ST	N 3RD ST	N 4TH ST	1	2	6	0	94	CITY LOCAL
400	MARKET ST	N 4TH ST	N INDEPENDENCE MALL E	1	2	0	8	94	CITY LOCAL
500	MARKET ST	N INDEPENDENCE MALL E	N INDEPENDENCE MALL W	1	3	0	1	94	CITY LOCAL
600	MARKET ST	S INDEPENDENCE MALL W	S 7TH ST	1	3	0	0	94	CITY LOCAL
7900	MINERVA ST	UMBRIA ST	SHAWMONT AVE	4	7	0	0	69	PENNDOT
100	MORRIS ST	S FRONT ST	S 2ND ST	1	9	0	0	68	PENNDOT
200	MORRIS ST	S 2ND ST	E MOYAMENSING AVE	1	13	0	5	68	PENNDOT
300	MORRIS ST	E MOYAMENSING AVE	S ORIANNA ST	1	1	0	4	71	PENNDOT
300	MORRIS ST	S ORIANNA ST	S 4TH ST	1	0	0	0	44	PENNDOT
400	MORRIS ST	S LAWRENCE ST	S ORKNEY ST	1	0	0	0	81	PENNDOT
400	MORRIS ST	S 4TH ST	S LAWRENCE ST	1	2	0	0	81	PENNDOT
400	MORRIS ST	S ORKNEY ST	S 5TH ST	1	0	8	0	71	PENNDOT
500	MORRIS ST	S 5TH ST	S 6TH ST	1	1	0	1	79	PENNDOT
600	MORRIS ST	S 6TH ST	S 7TH ST	1	1	2	3	79	PENNDOT
700	MORRIS ST	S 7TH ST	S 8TH ST	1	0	0	0	68	PENNDOT
800	MORRIS ST	S 8TH ST	S 9TH ST	1	7	3	2	42	PENNDOT

# 2021 Paving List

HUNDRED	STREET	FROM	TO	CITY COUNCIL DISTRICT	POTHLES	DITCHES	EMERGENCY UTILITY WORK	ROADWAY RESURFACING RATING	PAVING PROGRAM
900	MORRIS ST	S 9TH ST	S 10TH ST	1	3	1	10	68	PENNDOT
1000	MORRIS ST	S 10TH ST	S 11TH ST	1	15	0	2	68	PENNDOT
1100	MORRIS ST	S 11TH ST	S JESSUP ST	1	0	0	3	79	PENNDOT
1100	MORRIS ST	S JESSUP ST	E PASSYUNK AVE	1	2	1	7	71	PENNDOT
1200	MORRIS ST	S ISEMINGER ST	S 13TH ST	1	0	0	0	71	PENNDOT
1200	MORRIS ST	S CAMAC ST	S ISEMINGER ST	1	2	0	0	81	PENNDOT
1200	MORRIS ST	E PASSYUNK AVE	S CAMAC ST	1	2	0	0	55	PENNDOT
1300	MORRIS ST	S JUNIPER ST	S WATTS ST	1	0	0	0	81	PENNDOT
1300	MORRIS ST	S CLARION ST	S JUNIPER ST	1	1	0	0	79	PENNDOT
1300	MORRIS ST	S 13TH ST	S CLARION ST	1	0	0	0	81	PENNDOT
1300	MORRIS ST	S WATTS ST	S BROAD ST	1	1	0	0	68	PENNDOT
1400	MORRIS ST	S BROAD ST	S BROAD ST	2	0	0	0	71	PENNDOT
1200	N 13TH ST	W FLORA ST	W THOMPSON ST	5	3	0	0	59	CITY FAM
1200	N 13TH ST	W GIRARD AVE	W FLORA ST	5	4	0	0	63	CITY FAM
1300	N 13TH ST	W THOMPSON ST	MASTER ST	5	0	1	0	65	CITY FAM
1400	N 13TH ST	MASTER ST	JEFFERSON ST	5	0	0	1	66	CITY FAM
1500	N 13TH ST	JEFFERSON ST	W OXFORD ST	5	1	0	0	76	CITY FAM
0	N 16TH ST	JOHN F KENNEDY BLVD	CUTHBERT ST	5	0	0	0	64	CITY LOCAL
0	N 16TH ST	CUTHBERT ST	ARCH ST	5	2	1	0	64	CITY LOCAL
100	N 16TH ST	ARCH ST	APPLETREE ST	5	3	0	0	64	CITY LOCAL
100	N 16TH ST	APPLETREE ST	CHERRY ST	5	0	0	0	64	CITY LOCAL
100	N 16TH ST	CHERRY ST	RACE ST	5	3	0	0	64	CITY LOCAL
200	N 16TH ST	SPRING ST	VINE ST	5	1	0	0	64	CITY LOCAL
200	N 16TH ST	RACE ST	SPRING ST	5	1	0	0	64	CITY LOCAL
300	N 16TH ST	VINE ST	VINE ST	5	0	0	0	70	CITY LOCAL
4800	N 4TH ST	W ROOSEVELT BLVD	W ROCKLAND ST	8	3	0	1	59	CITY FAM
4900	N 4TH ST	W ALBANUS ST	W RUSCOMB ST	8	0	0	0	83	CITY FAM
4900	N 4TH ST	W ROCKLAND ST	W ALBANUS ST	8	2	3	1	49	CITY FAM
5000	N 4TH ST	W ASHDALE ST	LINDLEY AVE	8	0	2	0	86	CITY FAM
5000	N 4TH ST	W RUSCOMB ST	W ASHDALE ST	8	0	0	1	89	CITY FAM
5100	N 4TH ST	LINDLEY AVE	W DUNCANNON AVE	8	4	0	0	83	CITY FAM
4200	N 6TH ST	W HUNTING PARK AVE	W BRISTOL ST	7	3	0	1	35	CITY FAM
4300	N 6TH ST	W BRISTOL ST	N FAIRHILL ST	7	0	0	2	68	CITY FAM
4300	N 6TH ST	N FAIRHILL ST	W CAYUGA ST	7	0	1	0	51	CITY FAM
4400	N 6TH ST	W CAYUGA ST	W WINGOHOCKING ST	7	4	0	3	32	CITY FAM
4500	N 6TH ST	W ANNSBURY ST	W ANNSBURY ST	7	0	0	4	84	CITY FAM
4500	N 6TH ST	W WINGOHOCKING ST	W ANNSBURY ST	7	0	0	1	49	CITY FAM
4600	N 6TH ST	W LURAY ST	W ROOSEVELT BLVD	7	0	0	0	49	CITY FAM
4600	N 6TH ST	W ANNSBURY ST	W LURAY ST	7	0	0	0	70	CITY FAM
400	N 7TH ST	CALLOWHILL ST	WILLOW ST	1	6	0	0	55	CITY FAM
400	N 7TH ST	WILLOW ST	SPRING GARDEN ST	1	17	0	16	50	CITY FAM
4200	N 7TH ST	W HUNTING PARK AVE	W BRISTOL ST	7	5	5	8	49	CITY FAM
4300	N 7TH ST	W BRISTOL ST	W CAYUGA ST	7	3	0	0	59	CITY FAM
4400	N 7TH ST	W CAYUGA ST	W WINGOHOCKING ST	7	0	0	0	19	CITY FAM
4500	N 7TH ST	W ANNSBURY ST	W RAYMOND ST	7	0	0	0	19	CITY FAM
4500	N 7TH ST	W WINGOHOCKING ST	W ANNSBURY ST	7	0	0	0	6	CITY FAM
4500	N 7TH ST	W RAYMOND ST	W COURTLAND ST	7	0	0	1	49	CITY FAM
4600	N 7TH ST	W COURTLAND ST	W LURAY ST	7	0	0	0	0	CITY FAM

# 2021 Paving List

HUNDRED	STREET	FROM	TO	CITY COUNCIL DISTRICT	POTHoles	DITCHES	EMERGENCY UTILITY WORK	ROADWAY RESURFACING RATING	PAVING PROGRAM
4600	N 7TH ST	W LURAY ST	W ROOSEVELT BLVD	7	1	0	0	32	CITY FAM
4700	N 7TH ST	N 7TH ST	W LOUDON ST	8	1	0	0	43	CITY FAM
4700	N 7TH ST	W WYOMING AVE	N 7TH ST	8	3	0	0	63	CITY FAM
4200	N 8TH ST	W HUNTING PARK AVE	W BRISTOL ST	7	9	0	3	3	CITY FAM
4300	N 8TH ST	W BRISTOL ST	W CAYUGA ST	7	1	2	3	32	CITY FAM
4400	N 8TH ST	W CAYUGA ST	W WINGOHOCKING ST	7	2	2	12	32	CITY FAM
4500	N 8TH ST	W RAYMOND ST	W ROOSEVELT BLVD	7	1	6	0	49	CITY FAM
4500	N 8TH ST	W ANNSBURY ST	W RAYMOND ST	7	0	0	0	68	CITY FAM
4500	N 8TH ST	W WINGOHOCKING ST	W ANNSBURY ST	7	0	0	0	68	CITY FAM
3900	N 9TH ST	W LUZERNE ST	W LYCOMING ST	5	1	0	0	81	CITY FAM
4000	N 9TH ST	W LYCOMING ST	W LYCOMING ST	5	1	0	0	18	CITY FAM
4100	N 9TH ST	W LYCOMING ST	W HUNTING PARK AVE	5	8	2	3	0	CITY FAM
4200	N DARIEN ST	W HUNTING PARK AVE	W BRISTOL ST	7	2	4	1	39	CITY FAM
4300	N DARIEN ST	W BRISTOL ST	W CAYUGA ST	7	0	4	0	63	CITY FAM
4200	N FAIRHILL ST	W HUNTING PARK AVE	W BRISTOL ST	7	0	2	1	63	CITY FAM
4200	N FRANKLIN ST	W HUNTING PARK AVE	W BRISTOL ST	7	0	0	2	95	CITY FAM
4300	N FRANKLIN ST	W BRISTOL ST	W CAYUGA ST	7	1	0	0	78	CITY FAM
4400	N FRANKLIN ST	W CAYUGA ST	W WINGOHOCKING ST	7	2	0	0	71	CITY FAM
300	N FRONT ST	N WATER ST	CALLOWHILL ST	1	3	10	3	70	PENNDOT
400	N FRONT ST	N WATER ST	NOBLE ST	1	4	1	0	28	PENNDOT
400	N FRONT ST	CALLOWHILL ST	N WATER ST	1	2	0	0	55	PENNDOT
500	N FRONT ST	NOBLE ST	SPRING GARDEN ST	1	0	0	0	45	PENNDOT
500	N FRONT ST	SPRING GARDEN ST	SPRING GARDEN ST	1	0	0	0	84	PENNDOT
600	N FRONT ST	SPRING GARDEN ST	FAIRMOUNT AVE	1	1	4	0	15	PENNDOT
700	N FRONT ST	OLIVE ST	BROWN ST	1	0	0	0	54	PENNDOT
700	N FRONT ST	FAIRMOUNT AVE	OLIVE ST	1	6	1	0	55	PENNDOT
800	N FRONT ST	BROWN ST	POPLAR ST	1	0	0	0	68	PENNDOT
900	N FRONT ST	POPLAR ST	ELLEN ST	1	6	35	0	38	PENNDOT
4800	N LAWRENCE ST	W ROOSEVELT BLVD	W ROCKLAND ST	8	3	1	0	45	CITY FAM
4800	N LEITHGOW ST	W ROCKLAND ST	W ROOSEVELT BLVD	8	0	2	5	78	CITY FAM
4200	N MARSHALL ST	W HUNTING PARK AVE	W BRISTOL ST	7	0	0	0	39	CITY FAM
4300	N MARSHALL ST	W BRISTOL ST	W CAYUGA ST	7	0	0	0	46	CITY FAM
4400	N MARSHALL ST	W CAYUGA ST	W WINGOHOCKING ST	7	1	8	1	63	CITY FAM
3900	O ST	E ERIE AVE	E LUZERNE ST	7	0	0	0	73	CITY FAM
4000	O ST	LEWIS ST	WORRELL ST	7	0	1	0	75	CITY FAM
4000	O ST	WORRELL ST	E LYCOMING ST	7	0	0	0	83	CITY FAM
4000	O ST	E LUZERNE ST	LEWIS ST	7	0	0	1	59	CITY FAM
4100	O ST	E LYCOMING ST	E HUNTING PARK AVE	7	5	0	0	45	CITY FAM
4200	O ST	LEIPER ST	E BRISTOL ST	7	0	2	11	49	CITY FAM
4300	O ST	E BRISTOL ST	E CAYUGA ST	7	2	0	6	42	CITY FAM
3200	POTTER ST	H ST	E WESTMORELAND ST	7	0	1	0	43	CITY FAM
0	RACE ST	N INDEPENDENCE MALL E	N INDEPENDENCE MALL E	1	0	0	0	75	PENNDOT
200	RACE ST	N 2ND ST	BREAD ST	1	6	0	9	72	PENNDOT
200	RACE ST	BREAD ST	N 3RD ST	1	7	0	0	72	PENNDOT
300	RACE ST	N ORIANNA ST	N 4TH ST	1	4	0	1	72	PENNDOT
300	RACE ST	N 3RD ST	N ORIANNA ST	1	5	3	0	57	PENNDOT
400	RACE ST	N 4TH ST	N INDEPENDENCE MALL E	1	1	4	9	72	PENNDOT

# 2021 Paving List

HUNDRED	STREET	FROM	TO	CITY COUNCIL DISTRICT	POTHoles	DITCHES	EMERGENCY UTILITY WORK	ROADWAY RESURFACING RATING	PAVING PROGRAM
500	RACE ST	N 5TH ST	VINE STREET EXPY RAMP 8061H	1	6	0	0	68	PENNDOT
1400	RACE ST	N BROAD ST	N CARLISLE ST	5	6	0	0	68	PENNDOT
1400	RACE ST	N CARLISLE ST	N 15TH ST	5	0	0	0	64	PENNDOT
1500	RACE ST	N HICKS ST	N MOLE ST	5	0	0	0	68	PENNDOT
1500	RACE ST	N MOLE ST	N 16TH ST	5	1	0	0	71	PENNDOT
1500	RACE ST	N 15TH ST	N HICKS ST	5	4	0	0	64	PENNDOT
1600	RACE ST	N 16TH ST	N 17TH ST	5	4	0	0	68	PENNDOT
1700	RACE ST	N 17TH ST	N 18TH ST	5	3	0	1	70	PENNDOT
4500	RAMONA AVE	E WYOMING AVE	E FISHERS LN	7	3	0	0	80	CITY FAM
4600	RAMONA AVE	E FISHERS LN	ADAMS AVE	7	10	2	0	62	CITY FAM
3400	REACH ST	E ONTARIO ST	E TIOGA ST	7	0	13	0	63	CITY FAM
900	RED LION RD	NORTHEAST BLVD	NORTHEAST BLVD	10	1	0	0	75	PENNDOT
900	RED LION RD	BUSTLETON AVE	NORTHEAST BLVD	10	9	0	0	68	PENNDOT
1000	RED LION RD	NORTHEAST BLVD	JAMISON AVE	10	17	0	6	70	PENNDOT
2000	RED LION RD	JAMISON AVE	WILBUR ST	10	3	0	0	71	PENNDOT
2000	RED LION RD	ALEXANDRA LN	HALDEMAN AVE	10	5	0	0	71	PENNDOT
2000	RED LION RD	WILBUR ST	ALEXANDRA LN	10	2	0	0	71	PENNDOT
2100	RED LION RD	HALDEMAN AVE	E ROOSEVELT BLVD	10	3	2	0	71	PENNDOT
200	S 17TH ST	SAINT JAMES ST	LOCUST ST	2	0	0	0	68	CITY FAM
200	S 17TH ST	LATIMER ST	RITTENHOUSE SQ	2	0	0	0	75	CITY FAM
200	S 17TH ST	MANNING ST	SPRUCE ST	2	1	0	7	68	CITY FAM
200	S 17TH ST	CHANCELLOR ST	SAINT JAMES ST	2	0	0	0	68	CITY FAM
200	S 17TH ST	LOCUST ST	SCHUBERT ALY	2	0	1	0	68	CITY FAM
200	S 17TH ST	RITTENHOUSE SQ	MANNING ST	2	0	6	0	75	CITY FAM
200	S 17TH ST	SCHUBERT ALY	LATIMER ST	2	0	12	0	75	CITY FAM
300	S 17TH ST	SPRUCE ST	CYPRESS ST	2	2	0	1	50	CITY FAM
300	S 17TH ST	CYPRESS ST	DELANCEY PL	2	0	0	0	50	CITY FAM
300	S 17TH ST	DELANCEY PL	PANAMA ST	2	5	0	0	50	CITY FAM
300	S 17TH ST	PANAMA ST	PINE ST	2	5	1	0	50	CITY FAM
1400	S 49TH ST	SAYBROOK AVE	PASCHALL AVE	3	0	0	0		CITY LOCAL
1400	S 49TH ST	WOODLAND AVE	SAYBROOK AVE	3	0	0	2		CITY LOCAL
1500	S 49TH ST	PASCHALL AVE	GRAYS AVE	3	4	0	2		CITY LOCAL
100	SHAWMONT AVE	MINERVA ST	GREEN TREE RUN	4	8	0	0	43	PENNDOT
200	SHAWMONT AVE	GREEN TREE RUN	EVA ST	4	16	3	1	60	PENNDOT
500	SHAWMONT AVE	BEAN ST	GRANVILLE RD	4	0	0	0	68	PENNDOT
500	SHAWMONT AVE	GRANVILLE RD	RIDGE AVE	4	0	1	0	57	PENNDOT
500	SHAWMONT AVE	EVA ST	BEAN ST	4	3	3	0	57	PENNDOT
0	SHURS LN	MAIN ST	STATION ST	4	1	0	0	38	PENNDOT
100	SHURS LN	BOONE ST	TERRACE ST	4	10	6	0	38	PENNDOT
100	SHURS LN	TOWER ST	BOONE ST	4	0	0	0	57	PENNDOT
100	SHURS LN	TERRACE ST	DEXTER ST	4	1	5	0	38	PENNDOT
100	SHURS LN	STATION ST	CRESSON ST	4	0	0	0	81	PENNDOT
100	SHURS LN	APPLE ST	TOWER ST	4	5	0	0	57	PENNDOT
100	SHURS LN	CRESSON ST	APPLE ST	4	4	0	0	57	PENNDOT
200	SHURS LN	DEXTER ST	LAURISTON ST	4	11	5	1	38	PENNDOT
300	SHURS LN	LAURISTON ST	PECHIN ST	4	6	0	0	57	PENNDOT
400	SHURS LN	MERRICK ST	RIDGE AVE	4	2	0	0	45	PENNDOT
400	SHURS LN	FREELAND AVE	MITCHELL ST	4	3	1	0	63	PENNDOT
400	SHURS LN	MITCHELL ST	MERRICK ST	4	3	2	0	47	PENNDOT

# 2021 Paving List

HUNDRED	STREET	FROM	TO	CITY COUNCIL DISTRICT	POTHoles	DITCHES	EMERGENCY UTILITY WORK	ROADWAY RESURFACING RATING	PAVING PROGRAM
400	SHURS LN	PECHIN ST	FREELAND AVE	4	8	4	3	51	PENNDOT
0	SPRUCE ST	S CHRISTOPHER COLUMBUS BLVD	S FRONT ST	1	1	0	0	79	PENNDOT
100	SPRUCE ST	S FRONT ST	38TH PARALLEL PL	1	0	0	1	79	PENNDOT
7300	STATE RD	COTTMAN AVE	BLEIGH AVE	6	4	0	0	22	CITY LOCAL
7400	STATE RD	BLEIGH AVE	PENNYPACK PATH	6	5	5	0	41	CITY LOCAL
7900	STATE RD	PENNYPACK PATH	RHAWN ST	6	2	0	0	51	CITY LOCAL
8000	STATE RD	RHAWN ST	CFCF PRISON DWY	6	5	0	0	41	CITY LOCAL
8200	STATE RD	CFCF PRISON DWY	DETENTION CENTER DWY	6	1	0	0	51	CITY LOCAL
8300	STATE RD	DETENTION CENTER DWY	ASHBURNER ST	6	4	0	0	51	CITY LOCAL
8400	STATE RD	ASHBURNER ST	PENNYPACK ST	6	24	2	0	41	CITY LOCAL
8700	STATE RD	PENNYPACK ST	LINDEN AVE	6	13	2	1	27	CITY LOCAL
9200	STATE RD	LINDEN AVE	ARENDELL AVE	6	15	0	0	27	CITY LOCAL
9300	STATE RD	ARENDELL AVE	PEARSON AVE	6	4	0	0	51	CITY LOCAL
9400	STATE RD	DELAIRE LANDING RD	CONVENT LN	6	0	1	0	27	CITY LOCAL
9400	STATE RD	DELAIRE LANDING RD	DELAIRE LANDING RD	6	1	0	0	58	CITY LOCAL
9400	STATE RD	PEARSON AVE	DELAIRE LANDING RD	6	2	0	0	35	CITY LOCAL
9500	STATE RD	CONVENT LN	CONVENT LN	6	1	0	0	35	CITY LOCAL
9500	STATE RD	JAMES ST	FITLER ST	6	0	0	0	27	CITY LOCAL
9500	STATE RD	CONVENT LN	JAMES ST	6	2	1	0	27	CITY LOCAL
9600	STATE RD	FITLER ST	GRANT AVE	6	2	0	2	41	CITY LOCAL
9700	STATE RD	GRANT AVE	CITY BOUNDARY	6	0	0	0	58	CITY LOCAL
3400	TAMPA ST	E ONTARIO ST	E TIOGA ST	7	2	5	0	46	CITY FAM
100	TASKER ST	S FRONT ST	S 2ND ST	1	3	3	5	65	PENNDOT
200	TASKER ST	S 2ND ST	E MOYAMENSING AVE	1	9	2	5	42	PENNDOT
300	TASKER ST	E MOYAMENSING AVE	S 4TH ST	1	0	0	2	42	PENNDOT
400	TASKER ST	S 4TH ST	S LAWRENCE ST	1	0	0	2	68	PENNDOT
400	TASKER ST	S LAWRENCE ST	S ORKNEY ST	1	1	0	0	68	PENNDOT
400	TASKER ST	S ORKNEY ST	S 5TH ST	1	2	0	0	77	PENNDOT
500	TASKER ST	S 5TH ST	S 6TH ST	1	0	0	10	52	PENNDOT
600	TASKER ST	S MARSHALL ST	S 7TH ST	1	1	0	0	69	PENNDOT
600	TASKER ST	S 6TH ST	S MARSHALL ST	1	1	0	0	81	PENNDOT
700	TASKER ST	S FRANKLIN ST	S 8TH ST	1	0	0	2	61	PENNDOT
700	TASKER ST	S 7TH ST	S BEULAH ST	1	4	0	3	79	PENNDOT
700	TASKER ST	S BEULAH ST	S FRANKLIN ST	1	0	0	0	81	PENNDOT
800	TASKER ST	S 8TH ST	S 9TH ST	1	7	0	0	46	PENNDOT
900	TASKER ST	S 9TH ST	S 10TH ST	1	4	0	7	61	PENNDOT
1000	TASKER ST	S 10TH ST	S 11TH ST	1	0	1	0	79	PENNDOT
1100	TASKER ST	LINN ST	S 12TH ST	1	0	3	0	68	PENNDOT
1100	TASKER ST	S 11TH ST	E PASSYUNK AVE	1	0	0	0	78	PENNDOT
1200	TASKER ST	S 12TH ST	S CAMAC ST	1	0	0	1	81	PENNDOT
1200	TASKER ST	S CAMAC ST	S ISEMINGER ST	1	2	0	0	78	PENNDOT
1200	TASKER ST	S ISEMINGER ST	S 13TH ST	1	0	0	0	81	PENNDOT
1300	TASKER ST	S JUNIPER ST	S WATTS ST	1	1	0	0	98	PENNDOT
1300	TASKER ST	S 13TH ST	S CLARION ST	1	6	0	1	98	PENNDOT
1300	TASKER ST	S WATTS ST	S BROAD ST	1	0	0	0	98	PENNDOT
1300	TASKER ST	S CLARION ST	S JUNIPER ST	1	3	0	0	98	PENNDOT
1400	TASKER ST	S BROAD ST	S ROSEWOOD ST	2	0	0	3	73	PENNDOT

# 2021 Paving List

HUNDRED	STREET	FROM	TO	CITY COUNCIL DISTRICT	POTHoles	DITCHES	EMERGENCY UTILITY WORK	ROADWAY RESURFACING RATING	PAVING PROGRAM
1400	TASKER ST	S BROAD ST	S BROAD ST	2	0	0	0	98	PENNDOT
1400	TASKER ST	S CARLISLE ST	S 15TH ST	2	0	1	0	68	PENNDOT
1400	TASKER ST	S CARLISLE ST	S CARLISLE ST	2	0	0	0	73	PENNDOT
1400	TASKER ST	S ROSEWOOD ST	S CARLISLE ST	2	0	0	0	73	PENNDOT
1500	TASKER ST	S 15TH ST	S HICKS ST	2	1	1	0	62	PENNDOT
1500	TASKER ST	S MOLE ST	S 16TH ST	2	3	0	0	61	PENNDOT
1500	TASKER ST	S HICKS ST	S MOLE ST	2	1	0	0	62	PENNDOT
1600	TASKER ST	S 16TH ST	S BANCROFT ST	2	4	0	6	60	PENNDOT
1600	TASKER ST	S BANCROFT ST	S CHADWICK ST	2	0	0	1	61	PENNDOT
1600	TASKER ST	S CHADWICK ST	S 17TH ST	2	0	0	0	62	PENNDOT
1700	TASKER ST	S 17TH ST	S COLORADO ST	2	2	0	0	62	PENNDOT
1700	TASKER ST	S COLORADO ST	S BOUVIER ST	2	1	0	0	60	PENNDOT
1700	TASKER ST	S BOUVIER ST	S 18TH ST	2	4	2	0	55	PENNDOT
1800	TASKER ST	S 18TH ST	S CLEVELAND ST	2	5	4	0	55	PENNDOT
1800	TASKER ST	S CLEVELAND ST	DORRANCE ST	2	1	0	0	55	PENNDOT
1800	TASKER ST	DORRANCE ST	S 19TH ST	2	2	2	0	55	PENNDOT
1900	TASKER ST	S GARNET ST	S OPAL ST	2	0	1	0	61	PENNDOT
1900	TASKER ST	S OPAL ST	S 20TH ST	2	0	0	0	55	PENNDOT
1900	TASKER ST	S 19TH ST	S GARNET ST	2	3	0	0	61	PENNDOT
2000	TASKER ST	S LAMBERT ST	S 21ST ST	2	0	0	3	61	PENNDOT
2000	TASKER ST	S WOODSTOCK ST	S CAPITOL ST	2	0	0	0	62	PENNDOT
2000	TASKER ST	S 20TH ST	S WOODSTOCK ST	2	0	0	0	62	PENNDOT
2000	TASKER ST	S CAPITOL ST	S LAMBERT ST	2	0	0	0	62	PENNDOT
2100	TASKER ST	S 21ST ST	S 22ND ST	2	2	0	4	61	PENNDOT
2200	TASKER ST	POINT BREEZE AVE	S 23RD ST	2	3	0	1	68	PENNDOT
2200	TASKER ST	S 22ND ST	POINT BREEZE AVE	2	2	0	0	74	PENNDOT
2300	TASKER ST	S 23RD ST	S 24TH ST	2	3	0	0	74	PENNDOT
2400	TASKER ST	S RINGGOLD ST	S TAYLOR ST	2	1	0	0	74	PENNDOT
2400	TASKER ST	S TAYLOR ST	S 25TH ST	2	1	0	0	44	PENNDOT
2400	TASKER ST	S 24TH ST	S RINGGOLD ST	2	1	1	1	74	PENNDOT
2500	TASKER ST	S 25TH ST	S STILLMAN ST	2	0	0	0	70	PENNDOT
2500	TASKER ST	S BAMBREY ST	S 26TH ST	2	0	0	0	70	PENNDOT
2500	TASKER ST	S STILLMAN ST	S BAMBREY ST	2	0	0	0	74	PENNDOT
2600	TASKER ST	S TANEY ST	S 27TH ST	2	0	0	0	74	PENNDOT
2600	TASKER ST	S BAILEY ST	S TANEY ST	2	0	0	0	73	PENNDOT
2600	TASKER ST	S 26TH ST	S BAILEY ST	2	0	0	0	74	PENNDOT
2700	TASKER ST	S ETTING ST	S MARSTON ST	2	0	0	0	73	PENNDOT
2700	TASKER ST	S 27TH ST	S ETTING ST	2	0	0	0	68	PENNDOT
2700	TASKER ST	S MARSTON ST	S 28TH ST	2	0	1	0	68	PENNDOT
2800	TASKER ST	S NEWKIRK ST	S DOVER ST	2	0	0	0	68	PENNDOT
2800	TASKER ST	S 28TH ST	S NEWKIRK ST	2	0	0	1	73	PENNDOT
2800	TASKER ST	S DOVER ST	S 29TH ST	2	1	0	0	62	PENNDOT
2900	TASKER ST	S 29TH ST	S HOLLYWOOD ST	2	1	0	0	55	PENNDOT
2900	TASKER ST	S MYRTLEWOOD ST	S 30TH ST	2	0	0	0	62	PENNDOT
2900	TASKER ST	S HOLLYWOOD ST	S MYRTLEWOOD ST	2	0	0	0	61	PENNDOT
3000	TASKER ST	S STANLEY ST	S 31ST ST	2	0	0	0	68	PENNDOT
3000	TASKER ST	S 30TH ST	S CORLIES ST	2	1	0	0	74	PENNDOT
3000	TASKER ST	S CORLIES ST	S CORLIES ST	2	0	0	0	68	PENNDOT
3000	TASKER ST	S CORLIES ST	S STANLEY ST	2	1	0	0	74	PENNDOT

# 2021 Paving List

HUNDRED	STREET	FROM	TO	CITY COUNCIL DISTRICT	POTHLES	DITCHES	EMERGENCY UTILITY WORK	ROADWAY RESURFACING RATING	PAVING PROGRAM
3100	TASKER ST	S PATTON ST	S 32ND ST	2	0	0	0	74	PENNDOT
3100	TASKER ST	S 31ST ST	S NAPA ST	2	1	0	0	73	PENNDOT
3100	TASKER ST	S NAPA ST	S PATTON ST	2	3	0	0	55	PENNDOT
3200	TASKER ST	S 32ND ST	S 33RD ST	2	4	0	0	30	PENNDOT
3300	TASKER ST	S 33RD ST	S 34TH ST	2	1	0	0	70	PENNDOT
200	THOMAS PAINE PL	DOCK ST	S 3RD ST	1	1	2	0	6	PENNDOT
0	UMBRIA ST	WRIGHT ST	WRIGHT ST	4	1	1	0	69	PENNDOT
4600	UMBRIA ST	LEVERINGTON AVE	RIPKA ST	4	22	0	0	57	PENNDOT
4600	UMBRIA ST	HERMITAGE ST	WRIGHT ST	4	0	0	0	64	PENNDOT
4600	UMBRIA ST	RIPKA ST	HERMITAGE ST	4	0	0	0	57	PENNDOT
4700	UMBRIA ST	WRIGHT ST	ALDEN WALK	4	8	0	0	64	PENNDOT
4700	UMBRIA ST	ALDEN WALK	GATES ST	4	0	0	0	64	PENNDOT
4700	UMBRIA ST	GATES ST	FOUNTAIN ST	4	2	0	0	65	PENNDOT
4800	UMBRIA ST	FOUNTAIN ST	LEMONTE ST	4	41	11	0	69	PENNDOT
4800	UMBRIA ST	LEMONTE ST	PARKER AVE	4	0	0	0	64	PENNDOT
4900	UMBRIA ST	PARKER AVE	PARKER AVE	4	2	0	0	57	PENNDOT
5000	UMBRIA ST	PARKER AVE	PAOLI AVE	4	4	0	0	57	PENNDOT
5000	UMBRIA ST	PAOLI AVE	DOMINO LN	4	1	6	2	68	PENNDOT
5200	UMBRIA ST	DOMINO LN	AUTUMN RIVER RUN	4	5	1	0	68	PENNDOT
7200	UMBRIA ST	AUTUMN RIVER RUN	MINERVA ST	4	12	0	0	43	PENNDOT
0	UNIVERSITY AVE	SCHUYLKILL EXPY RAMP 8018C	SCHUYLKILL EXPY RAMP 8018D	3	0	0	0	78	CITY LOCAL
400	UNIVERSITY AVE	BALTIMORE AVE	GUARDIAN DR	3	0	0	0	78	CITY LOCAL
400	UNIVERSITY AVE	GUARDIAN DR	CURIE BLVD	3	0	0	0	78	CITY LOCAL
500	UNIVERSITY AVE	CURIE BLVD	CIVIC CENTER BLVD	3	0	0	0	78	CITY LOCAL
600	UNIVERSITY AVE	CIVIC CENTER BLVD	RIVER FIELDS DR	3	5	0	0	78	CITY LOCAL
6900	VALLEY AVE	HENRY AVE	LIVEZEY LN	4	16	0	1	3	PENNDOT
7000	VALLEY AVE	LIVEZEY LN	LIVEZEY ST	4	3	1	0	16	PENNDOT
7100	VALLEY AVE	CINNAMINSON ST	HILL RD	4	0	0	0	29	PENNDOT
7100	VALLEY AVE	LIVEZEY ST	CINNAMINSON ST	4	1	0	1	32	PENNDOT
7200	VALLEY AVE	HAGNER ST	DOMINO LN	4	1	0	0	13	PENNDOT
7200	VALLEY AVE	HILL RD	HAGNER ST	4	1	0	0	16	PENNDOT
7300	VALLEY AVE	KEIFFER ST	SHALKOP ST	4	2	2	0	9	PENNDOT
7300	VALLEY AVE	DOMINO LN	KEIFFER ST	4	2	1	0	32	PENNDOT
7400	VALLEY AVE	SHALKOP ST	WIGARD AVE	4	0	0	0	42	PENNDOT
600	W CAYUGA ST	N MARSHALL ST	N 7TH ST	7	0	0	0	86	CITY FAM
600	W CAYUGA ST	N MARSHALL ST	N MARSHALL ST	7	0	0	0	78	CITY FAM
600	W CAYUGA ST	N 6TH ST	N MARSHALL ST	7	1	0	0	86	CITY FAM
700	W CAYUGA ST	N FRANKLIN ST	N 8TH ST	7	0	0	0	78	CITY FAM
700	W CAYUGA ST	N 7TH ST	N FRANKLIN ST	7	1	0	0	86	CITY FAM
800	W CAYUGA ST	N DARIEN ST	N 9TH ST	7	0	0	0	68	CITY FAM
800	W CAYUGA ST	N 8TH ST	N DARIEN ST	7	0	0	3	87	CITY FAM
600	W COURTLAND ST	N 6TH ST	N 7TH ST	7	0	0	0	56	CITY FAM
700	W COURTLAND ST	N 7TH ST	W ROOSEVELT BLVD	7	0	0	0	71	CITY FAM
1200	W GLENWOOD AVE	N 12TH ST	N CAMAC ST	5	5	2	4	55	CITY FAM
1200	W GLENWOOD AVE	N CAMAC ST	N 13TH ST	5	0	7	0	55	CITY FAM
1300	W GLENWOOD AVE	W CAMBRIA ST	N BROAD ST	5	2	0	0	51	CITY FAM
1300	W GLENWOOD AVE	N 13TH ST	N PARK AVE	5	4	11	9	55	CITY FAM
1300	W GLENWOOD AVE	N PARK AVE	W CAMBRIA ST	5	1	0	0	44	CITY FAM

# 2021 Paving List

HUNDRED	STREET	FROM	TO	CITY COUNCIL DISTRICT	POTHLES	DITCHES	EMERGENCY UTILITY WORK	ROADWAY RESURFACING RATING	PAVING PROGRAM
1400	W HUNTINGDON ST	N BROAD ST	N CARLISLE ST	5	0	0	0	47	CITY FAM
1400	W HUNTINGDON ST	N CARLISLE ST	N 15TH ST	5	0	0	3	32	CITY FAM
1500	W HUNTINGDON ST	N SYDENHAM ST	N MOLE ST	5	1	0	0	37	CITY FAM
1500	W HUNTINGDON ST	N 15TH ST	N SYDENHAM ST	5	2	5	1	23	CITY FAM
1500	W HUNTINGDON ST	N MOLE ST	N 16TH ST	5	0	0	0	37	CITY FAM
1600	W HUNTINGDON ST	N 16TH ST	N BANCROFT ST	5	3	1	1	37	CITY FAM
1600	W HUNTINGDON ST	N BANCROFT ST	N CHADWICK ST	5	0	0	0	47	CITY FAM
1600	W HUNTINGDON ST	N CHADWICK ST	N 17TH ST	5	0	0	0	37	CITY FAM
1700	W HUNTINGDON ST	N BOUVIER ST	N 18TH ST	5	0	0	0	45	CITY FAM
1700	W HUNTINGDON ST	N 17TH ST	N COLORADO ST	5	0	0	0	45	CITY FAM
1700	W HUNTINGDON ST	N COLORADO ST	N BOUVIER ST	5	0	0	1	45	CITY FAM
1800	W HUNTINGDON ST	N CLEVELAND ST	N GRATZ ST	5	0	0	0	39	CITY FAM
1800	W HUNTINGDON ST	N 18TH ST	N CLEVELAND ST	5	0	0	0	39	CITY FAM
1800	W HUNTINGDON ST	N GRATZ ST	W GLENWOOD AVE	5	0	0	0	47	CITY FAM
600	W LOUDON ST	N MARSHALL ST	N 7TH ST	8	1	1	3	71	CITY FAM
700	W LOUDON ST	N 7TH ST	N FRANKLIN ST	8	1	0	1	49	CITY FAM
700	W LOUDON ST	N FRANKLIN ST	N 8TH ST	8	0	0	0	49	CITY FAM
800	W LOUDON ST	N 8TH ST	N 9TH ST	8	1	0	2	69	CITY FAM
900	W LOUDON ST	N HUTCHINSON ST	N 10TH ST	8	0	0	4	33	CITY FAM
900	W LOUDON ST	N 9TH ST	N HUTCHINSON ST	8	1	0	1	32	CITY FAM
1000	W LOUDON ST	N 10TH ST	N WARNOCK ST	8	2	0	4	32	CITY FAM
1000	W LOUDON ST	N WARNOCK ST	N 11TH ST	8	1	0	0	32	CITY FAM
1100	W LOUDON ST	N 11TH ST	N MARVINE ST	8	0	0	1	32	CITY FAM
1100	W LOUDON ST	N MARVINE ST	N 12TH ST	8	1	1	0	32	CITY FAM
1200	W LOUDON ST	N CAMAC ST	N 13TH ST	8	0	0	0	49	CITY FAM
1200	W LOUDON ST	N 12TH ST	N CAMAC ST	8	1	0	2	68	CITY FAM
1300	W LOUDON ST	N 13TH ST	OLD YORK RD	8	6	1	5	32	CITY FAM
600	W LURAY ST	N 6TH ST	N 7TH ST	7	0	4	3	84	CITY FAM
1400	W PASSYUNK AVE	S BROAD ST	S 15TH ST	2	1	2	0	87	CITY LOCAL
1500	W PASSYUNK AVE	S 15TH ST	S 16TH ST	2	1	2	5	87	CITY LOCAL
1600	W PASSYUNK AVE	SNYDER AVE	S CHADWICK ST	2	0	0	0	87	CITY LOCAL
1600	W PASSYUNK AVE	S 16TH ST	SNYDER AVE	2	0	0	0	82	CITY LOCAL
1600	W PASSYUNK AVE	S CHADWICK ST	S 17TH ST	2	0	0	0	87	CITY LOCAL
1700	W PASSYUNK AVE	S BOUVIER ST	S 18TH ST	2	0	0	0	87	CITY LOCAL
1700	W PASSYUNK AVE	S COLORADO ST	S BOUVIER ST	2	0	0	0	87	CITY LOCAL
1700	W PASSYUNK AVE	S 17TH ST	S COLORADO ST	2	0	0	1	87	CITY LOCAL
1800	W PASSYUNK AVE	S 18TH ST	JACKSON ST	2	1	0	0	87	CITY LOCAL
1800	W PASSYUNK AVE	JACKSON ST	S 19TH ST	2	0	0	0	87	CITY LOCAL
1900	W PASSYUNK AVE	S 19TH ST	S GARNET ST	2	0	0	5	87	CITY LOCAL
1900	W PASSYUNK AVE	S OPAL ST	S 20TH ST	2	0	0	0	87	CITY LOCAL
1900	W PASSYUNK AVE	S GARNET ST	S OPAL ST	2	0	0	0	87	CITY LOCAL
2000	W PASSYUNK AVE	S 20TH ST	S WOODSTOCK ST	2	2	0	0	87	CITY LOCAL
2000	W PASSYUNK AVE	S LAMBERT ST	WOLF ST	2	0	0	0	87	CITY LOCAL
2000	W PASSYUNK AVE	S WOODSTOCK ST	S LAMBERT ST	2	0	0	0	87	CITY LOCAL
2100	W PASSYUNK AVE	S 21ST ST	S 22ND ST	2	6	5	1	87	CITY LOCAL
2200	W PASSYUNK AVE	S 22ND ST	S CROSKEY ST	2	1	0	0	87	CITY LOCAL
2200	W PASSYUNK AVE	S HEMBERGER ST	S 23RD ST	2	0	0	0	87	CITY LOCAL
2200	W PASSYUNK AVE	S CROSKEY ST	S HEMBERGER ST	2	0	1	0	87	CITY LOCAL
2300	W PASSYUNK AVE	RITNER ST	S 24TH ST	2	0	2	0	87	CITY LOCAL



# 2021 Paving List

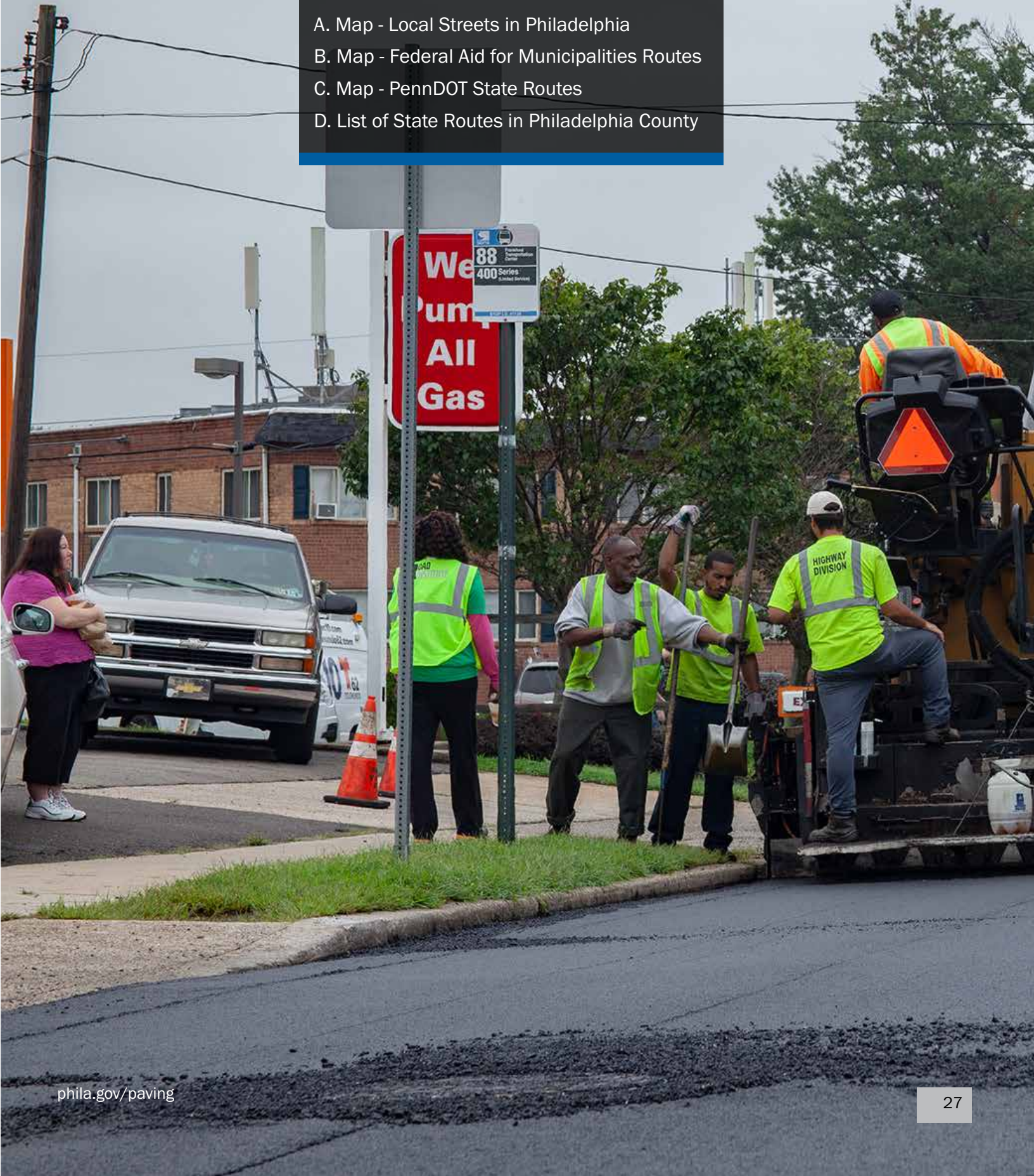
HUNDRED	STREET	FROM	TO	CITY COUNCIL DISTRICT	POTHoles	DITCHES	EMERGENCY UTILITY WORK	ROADWAY RESURFACING RATING	PAVING PROGRAM
2400	W PASSYUNK AVE	S 24TH ST	S 24TH ST	2	0	0	0	87	CITY LOCAL
2400	W PASSYUNK AVE	S 24TH ST	S 25TH ST	2	3	1	10	87	CITY LOCAL
2500	W PASSYUNK AVE	SCHUYLKILL EXPY RAMP	SCHUYLKILL EXPY RAMP P	2	0	0	0	87	CITY LOCAL
2500	W PASSYUNK AVE	VARE AVE	SCHUYLKILL EXPY RAMP	2	0	0	0	87	CITY LOCAL
2500	W PASSYUNK AVE	S 25TH ST	VARE AVE	2	20	0	0	87	CITY LOCAL
2600	W PASSYUNK AVE	SCHUYLKILL EXPY RAMP P	S 26TH ST	2	2	1	1	87	CITY LOCAL
2700	W PASSYUNK AVE	S 26TH ST	S 28TH ST	2	1	0	0	87	CITY LOCAL
2800	W PASSYUNK AVE	S 28TH ST	S NEWKIRK ST	2	0	0	0	89	CITY LOCAL
2800	W PASSYUNK AVE	S DOVER ST	W PASSYUNK AVE	2	1	0	0	89	CITY LOCAL
2800	W PASSYUNK AVE	S NEWKIRK ST	S DOVER ST	2	0	0	0	89	CITY LOCAL
6000	W PASSYUNK AVE	W PASSYUNK AVE	S 61ST ST	3	4	0	0	89	CITY LOCAL
6100	W PASSYUNK AVE	S 61ST ST	S 63RD ST	3	2	1	0	89	CITY LOCAL
6300	W PASSYUNK AVE	S 63RD ST	ESSINGTON AVE	2	2	0	0	89	CITY LOCAL
700	W RAYMOND ST	N 7TH ST	N 8TH ST	7	2	0	3	56	CITY FAM
200	W ROCKLAND ST	W ROOSEVELT BLVD	W ROCKLAND ST	8	0	0	0	36	CITY FAM
200	W ROCKLAND ST	W ROCKLAND ST	N 3RD ST	8	4	0	0	36	CITY FAM
300	W ROCKLAND ST	N 3RD ST	N 4TH ST	8	0	1	0	75	CITY FAM
400	W ROCKLAND ST	N LAWRENCE ST	N LAWRENCE ST	8	0	0	0	51	CITY FAM
400	W ROCKLAND ST	N 4TH ST	N LEITHGOW ST	8	0	0	0	51	CITY FAM
400	W ROCKLAND ST	N LAWRENCE ST	N 5TH ST	8	1	0	0	45	CITY FAM
400	W ROCKLAND ST	N LEITHGOW ST	N LAWRENCE ST	8	0	0	0	51	CITY FAM
500	W ROCKLAND ST	N FAIRHILL ST	N 6TH ST	8	0	0	0	75	CITY FAM
500	W ROCKLAND ST	N 5TH ST	N FAIRHILL ST	8	0	2	7	33	CITY FAM
600	W ROCKLAND ST	N MARSHALL ST	N 7TH ST	8	0	1	0	49	CITY FAM
600	W ROCKLAND ST	N 6TH ST	N MARSHALL ST	8	1	0	0	49	CITY FAM
700	W ROCKLAND ST	N 7TH ST	N FRANKLIN ST	8	0	0	0	68	CITY FAM
700	W ROCKLAND ST	N FRANKLIN ST	N 8TH ST	8	2	0	4	73	CITY FAM
800	W ROCKLAND ST	N 8TH ST	N 9TH ST	8	1	0	3	33	CITY FAM
900	W ROCKLAND ST	N 9TH ST	N HUTCHINSON ST	8	4	2	2	49	CITY FAM
900	W ROCKLAND ST	N HUTCHINSON ST	N 10TH ST	8	5	0	1	33	CITY FAM
1000	W ROCKLAND ST	N WARNOCK ST	N 11TH ST	8	2	0	1	25	CITY FAM
1000	W ROCKLAND ST	N 10TH ST	N WARNOCK ST	8	4	0	0	33	CITY FAM
0	WASHINGTON AVE	S CHRISTOPHER COLUMBUS BLVD	S WATER ST	1	0	0	0	20	PENNDOT
0	WASHINGTON AVE	S 2ND ST	E MOYAMENSING AVE	1	3	0	0	60	PENNDOT
0	WASHINGTON AVE	S FRONT ST	S 2ND ST	1	11	0	0	60	PENNDOT
0	WASHINGTON AVE	S WATER ST	S FRONT ST	1	0	0	0	80	PENNDOT
0	WASHINGTON AVE	E MOYAMENSING AVE	S 3RD ST	1	2	0	0	57	PENNDOT
0	WASHINGTON AVE	S WATER ST	S FRONT ST	1	2	0	0	37	PENNDOT
0	WASHINGTON AVE	S 3RD ST	S 4TH ST	1	13	0	0	52	PENNDOT
100	WASHINGTON AVE	S FRONT ST	S 2ND ST	1	9	0	0	86	PENNDOT
200	WASHINGTON AVE	E MOYAMENSING AVE	S 3RD ST	1	0	0	0	80	PENNDOT
200	WASHINGTON AVE	ALTER ST	E MOYAMENSING AVE	1	9	2	1	86	PENNDOT
300	WASHINGTON AVE	S 3RD ST	S 4TH ST	1	6	1	0	66	PENNDOT
400	WASHINGTON AVE	S 4TH ST	S 5TH ST	1	46	7	0	44	PENNDOT
500	WASHINGTON AVE	S 5TH ST	S RANDOLPH ST	1	34	0	0	70	PENNDOT
500	WASHINGTON AVE	S RANDOLPH ST	S 6TH ST	1	10	0	0	67	PENNDOT

## 2021 Paving List

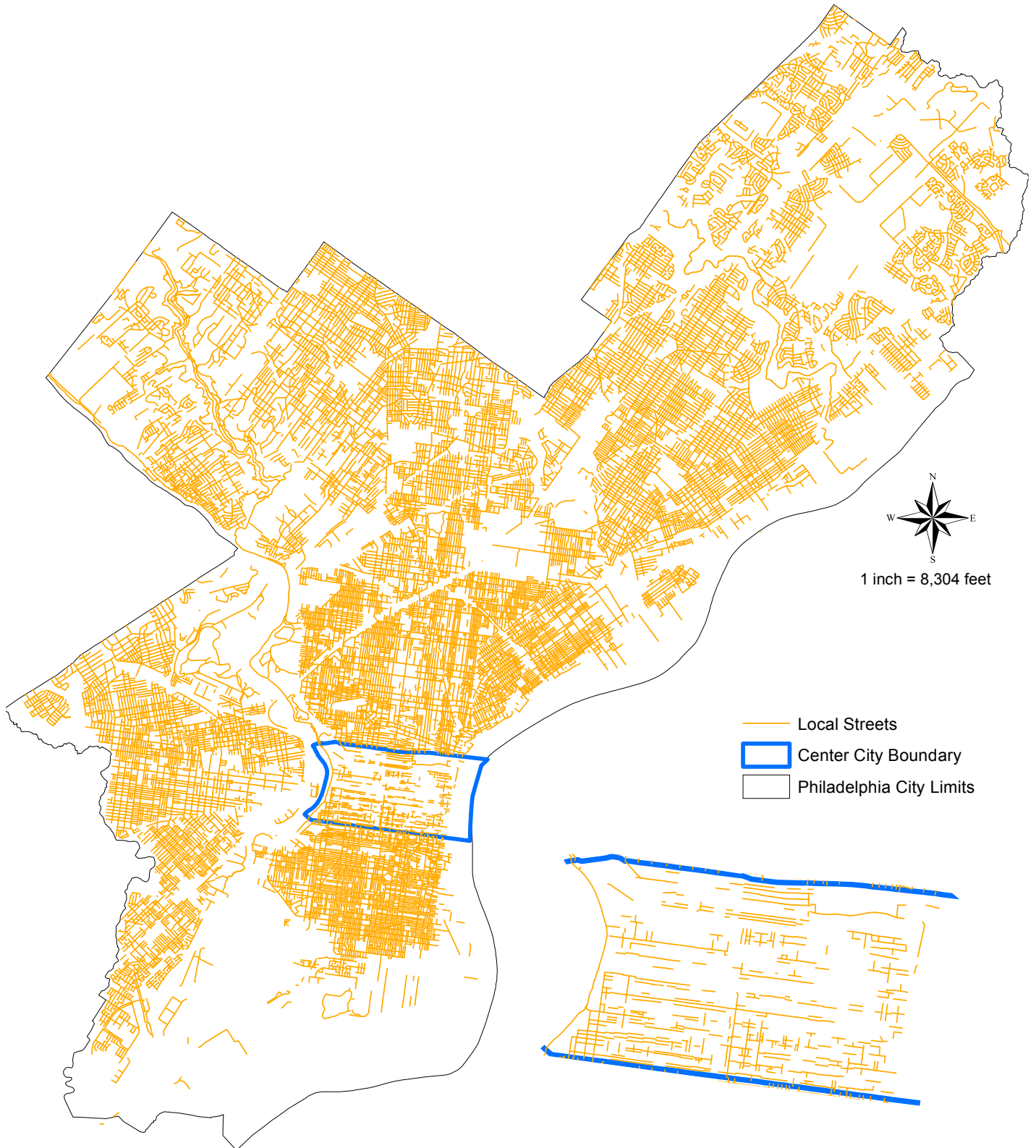
HUNDRED	STREET	FROM	TO	CITY COUNCIL DISTRICT	POTHoles	DITCHES	EMERGENCY UTILITY WORK	ROADWAY RESURFACING RATING	PAVING PROGRAM
600	WASHINGTON AVE	S 6TH ST	S 7TH ST	1	18	2	0	44	PENNDOT
700	WASHINGTON AVE	E PASSYUNK AVE	S 8TH ST	1	7	3	0	67	PENNDOT
700	WASHINGTON AVE	S FRANKLIN ST	E PASSYUNK AVE	1	1	0	0	71	PENNDOT
700	WASHINGTON AVE	S 7TH ST	S FRANKLIN ST	1	11	0	0	71	PENNDOT
800	WASHINGTON AVE	S 8TH ST	S DARIEN ST	1	32	0	0	52	PENNDOT
800	WASHINGTON AVE	S DARIEN ST	S 9TH ST	1	0	0	0	58	PENNDOT
900	WASHINGTON AVE	S 9TH ST	S 10TH ST	1	24	1	0	53	PENNDOT
1000	WASHINGTON AVE	S ALDER ST	S CLIFTON ST	1	0	0	0	42	PENNDOT
1000	WASHINGTON AVE	S 10TH ST	S ALDER ST	1	6	0	0	42	PENNDOT
1000	WASHINGTON AVE	S CLIFTON ST	S 11TH ST	1	2	0	0	43	PENNDOT
1100	WASHINGTON AVE	S 11TH ST	S 12TH ST	1	12	5	0	30	PENNDOT
1200	WASHINGTON AVE	S 12TH ST	S 13TH ST	1	16	0	0	67	PENNDOT
1300	WASHINGTON AVE	S 13TH ST	S BROAD ST	1	26	1	0	49	PENNDOT
1400	WASHINGTON AVE	S BROAD ST	S 15TH ST	2	13	0	0	73	PENNDOT
1400	WASHINGTON AVE	S BROAD ST	S BROAD ST	2	0	0	0	68	PENNDOT
1500	WASHINGTON AVE	S 15TH ST	S 16TH ST	2	7	0	0	76	PENNDOT
1600	WASHINGTON AVE	S 16TH ST	S CHADWICK ST	2	7	0	0	76	PENNDOT
1600	WASHINGTON AVE	S CHADWICK ST	S 17TH ST	2	0	0	0	79	PENNDOT
1700	WASHINGTON AVE	S BOUVIER ST	S 18TH ST	2	0	0	0	73	PENNDOT
1700	WASHINGTON AVE	S 17TH ST	S COLORADO ST	2	10	0	0	69	PENNDOT
1700	WASHINGTON AVE	S COLORADO ST	S BOUVIER ST	2	0	0	0	71	PENNDOT
1800	WASHINGTON AVE	DORRANCE ST	S 19TH ST	2	1	0	0	58	PENNDOT
1800	WASHINGTON AVE	S CLEVELAND ST	DORRANCE ST	2	0	0	0	55	PENNDOT
1800	WASHINGTON AVE	S 18TH ST	S CLEVELAND ST	2	5	0	0	57	PENNDOT
1900	WASHINGTON AVE	S 19TH ST	S 20TH ST	2	7	0	0	77	PENNDOT
2000	WASHINGTON AVE	S 20TH ST	S 21ST ST	2	15	0	0	78	PENNDOT
2100	WASHINGTON AVE	S 21ST ST	S 22ND ST	2	10	0	0	71	PENNDOT
2200	WASHINGTON AVE	S 22ND ST	S 23RD ST	2	10	3	0	70	PENNDOT
2300	WASHINGTON AVE	S 23RD ST	S 24TH ST	2	10	0	0	68	PENNDOT
2400	WASHINGTON AVE	S 24TH ST	S 25TH ST	2	37	0	0	44	PENNDOT
2500	WASHINGTON AVE	S 25TH ST	S 26TH ST	2	20	0	0	44	PENNDOT
2600	WASHINGTON AVE	S 26TH ST	GRAYS FERRY AVE	2	8	1	0	44	PENNDOT
3400	WEYMOUTH ST	E ONTARIO ST	E TIOGA ST	7	0	0	0	84	CITY FAM
4800	WOODLAND AVE	GRAYS FERRY AVE	S 49TH ST	3	1	0	0	66	CITY LOCAL

# Appendices

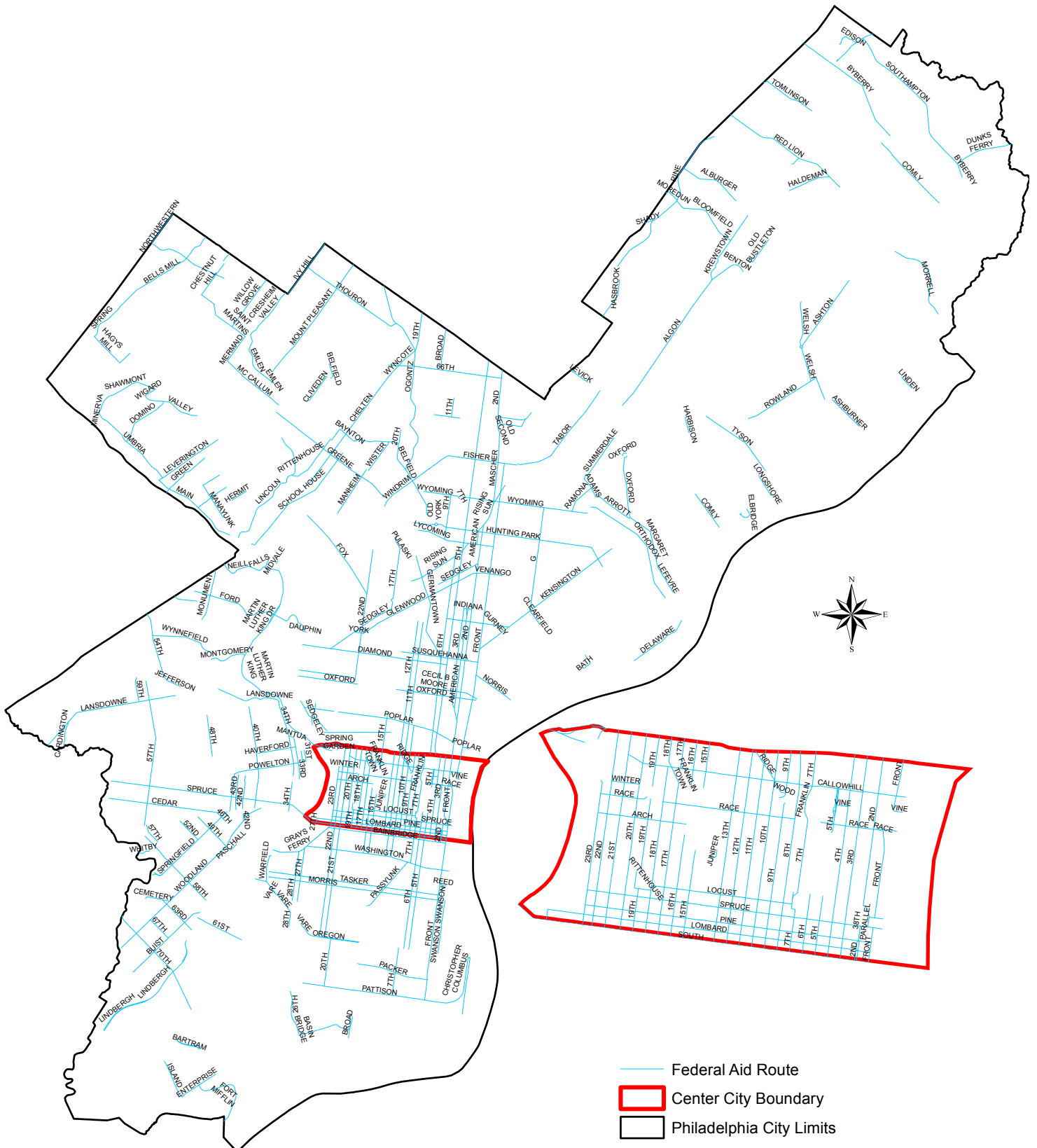
- A. Map - Local Streets in Philadelphia
- B. Map - Federal Aid for Municipalities Routes
- C. Map - PennDOT State Routes
- D. List of State Routes in Philadelphia County



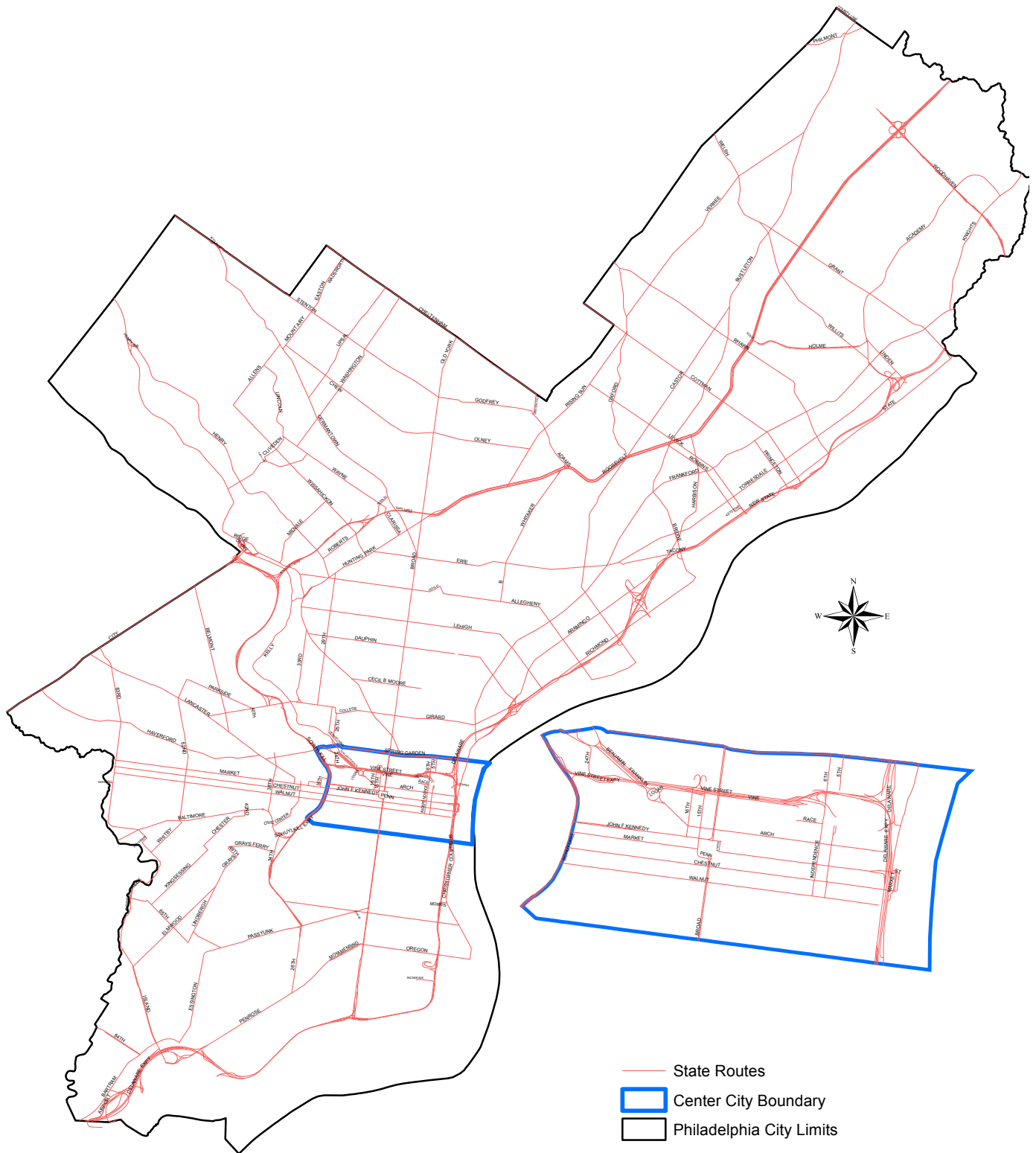
# Appendix A - Local Streets in Philadelphia



# Appendix B - Federal Aid for Municipalities Routes



# Appendix C - PennDot State Routes



# Appendix C - PennDot State Routes

- Academy Rd I-95 Knights Rd
- Clarissa St Hunting Park Ave Roberts Ave
- Adams Ave Crescentville Rd Roosevelt Blvd
- Cliveden St Park Line Dr Lincoln Dr
- Adams Ave Torresdale Ave Tacony St
- Allegheny Ave Ridge Ave Delaware Ave
- Allens La Wissahickon Ave Germantown Ave
- Aramingo Ave Delaware Ave Harbison Ave
- Arch St Columbus Blvd 16th St
- Arch St Schuylkill Ave W 30th St
- B St Allegheny Ave Erie Ave
- Baltimore Ave 39th St City Limits
- Bartram Ave I-95 84th St
- Belmont Ave Lancaster Ave City Ave
- Berkley St Wayne Ave Germantown Ave
- Bethlehem Pk Germantown Ave Stenton Ave
- Bridge St Frankford Ave Richmond St
- Broad St I-95 Oregon Ave
- Bustleton Ave Frankford Ave County Line Rd
- Castor Ave Delaware Ave Bustleton Ave
- Cecil B Moore Ave 10th St Ridge Ave
- Cobbs Creek Pkwy Woodland Ave Hoffman Ave
- Cobbs Creek Pkwy Baltimore Ave Market St
- Columbus Blvd Oregon Ave Spring Garden St
- Cottman Ave I-95 City Limits
- County Line Rd Bustleton Ave City Limits
- Crescentville Rd Adams Ave Cheltenham Ave
- Dauphin St Aramingo Ave Ridge Ave
- Delaware Ave Spring Garden St Aramingo Ave
- Delaware Ave Allegheny Ave Castor Ave
- Eakins Oval
- Easton Rd Mt Airy Ave Wadsworth Ave
- Elmwood Ave Lindbergh Blvd Island Ave
- Erie Ave Kensington Ave Hunting Park Ave
- Essington Ave Passyunk Ave Bartram Ave
- Filbert St Juniper St Broad St
- Frankford Ave Delaware Ave City Limits
- Cheltenham Ave Crescentville Rd Ivy Hill Rd
- B Franklin Pkwy 16th St Logan Circle (east)
- Chester Ave 65th St (W) 65th St (E)
- Chester Ave 52nd St 42nd St
- Chestnut St Columbus Blvd Cobbs Creek Pkwy
- Chestnut St Broad St Schuylkill Ave W
- Chew Ave Olney Ave Mt Airy Ave
- City Ave Ridge Ave City Limits
- Civic Center Blvd University Ave Convention Ave
- B Franklin Pkwy Logan Circle (west) Eakins Oval
- Germantown Ave Broad St Washington La
- Girard Ave Richmond St Poplar St
- Girard Ave W College Ave Lancaster Ave
- Godfrey Ave Crescentville Rd Broad St
- Grant Ave State Rd Welsh Rd
- Grays Ave 49th St Lindbergh Blvd
- Grays Ferry Ave 34th St Woodland Ave
- Lancaster Ave Girard Ave City Ave
- Lehigh Ave Richmond St Ridge Ave
- Levick St State Rd Rising Sun Ave
- Lincoln Dr Kelly Dr Ridge Ave
- Harbison Ave Aramingo Ave Roosevelt Blvd
- Lincoln Dr Cliveden St Allens La
- Haverford Ave Lancaster Ave City Ave
- Henry Ave Allegheny Ave Cathedral Rd
- Hoffman Ave 58th St Cobbs Creek Pkwy
- Holme Ave Roosevelt Blvd Academy Rd
- Huntingdon Pk Pine Rd Fillmore St
- Hunting Park Ave Kelly Dr Broad St
- I-76 Walt Whitman Brg City Ave
- I-95 City Limits City Limits
- I-676 I-95 I-76
- Independence Mall E Walnut St Race St
- Independence Mall W Walnut St Race St
- Industrial Hwy Island Ave City Limits
- Island Ave Woodland Ave Industrial Hwy
- Juniper St Market St Filbert St
- Kelly Dr Eakins Oval Lincoln Dr
- J F Kennedy Blvd Broad St Schuylkill Ave W
- J F Kennedy Blvd 30th St Market St
- Keystone St Robbins St Levick St
- Kingsessing Ave 52nd St 65th St
- Knights Rd Frankford Ave City Limits
- Lancaster Ave 33rd St Belmont Ave
- Lindbergh Blvd Grays Ave 65th St
- Linden Ave Academy Rd I-95
- Logan Circle
- Market St Columbus Blvd Juniper St
- Market St 15th St City Limits
- Marshall Rd Cobbs Creek Pkwy City Limits
- Midvale Ave Kelly Dr Wissahickon Ave
- Mt Airy Ave Germantown Ave Easton Rd
- Moyamensing Ave Broad St 20th St
- New State Rd State Rd Tacony Brg
- Old York Rd 67th Ave Cheltenham Ave

# Appendix C - PennDot State Routes

- Olney Ave Rising Sun Ave Wister St
- Oregon Ave Columbus Blvd Broad St
- Oxford Ave Roosevelt Blvd Rhawn St
- Parkside Ave Girard Ave 52nd St
- Park Line Dr Walnut La Cliveden St
- Passyunk Ave Broad St Essington Ave
- Pennsylvania Ave Spring Garden St 26th St
- Penrose Ave 20th St Island Ave
- Philmont Ave Byberry Rd City Limits
- Poplar St 24th St W College Ave
- Princeton Ave Frankford Ave I-95
- Race St 6th St 8th St
- Rhawn St Pine Rd State Rd
- Richmond St Delaware Ave Bridge St
- Ridge Ave Spring Garden St Northwestern Ave
- Vine St (service rds) 7th St 20th St
- Wadsworth Ave Thouron Ave Cheltenham Ave
- Walnut La Ridge Ave Wayne Ave
- Walnut St Columbus Blvd Cobbs Creek Pkwy
- Washington La Wayne Ave Cheltenham Ave
- Rising Sun Ave Roosevelt Blvd Cottman Ave
- Wayne Ave Windrim Ave Lincoln Dr
- Robbins St Roosevelt Blvd Keystone St
- Roberts Ave Henry Ave Wayne Ave
- Roosevelt Blvd 9th St City Limits
- Roosevelt Expy I-76 9th St
- Schuylkill Ave W Walnut St Arch St
- Sedgley Ave Allegheny Ave/9th St Allegheny Ave/11th St
- Snyder Ave Columbus Blvd Vare Ave
- S Penn Sq Broad St 15th St
- Spring Garden St Columbus Blvd Eakins Oval (E)
- Welsh Rd Willits Rd City Limits
- W College Ave Poplar St Girard Ave
- Whitaker Ave Erie Ave Roosevelt Blvd
- Whitby Ave 52nd St Cobbs Creek Pkwy
- Willits Rd Welsh Rd Academy Rd
- Wissahickon Ave Hunting Park Ave Allens La
- Woodhaven Rd City Limits City Limits
- Woodland Ave Grays Ferry Ave 49th St
- Woodland Ave Island Ave City Limits
- 5th St Race St Spring Garden St
- Spring Garden St Eakins Oval (W) Lancaster Ave
- 6th St Race St Spring Garden St
- State Rd Levick St City Limits
- Stenton Ave Broad St Northwestern Ave
- Tacony St Adams Ave Levick St
- Torresdale Ave Kensington Ave Linden Ave
- University Ave 34th St Baltimore Ave
- 8th St Race St Vine St
- 15th St S Penn Sq Kennedy Blvd
- 16th St Kennedy Blvd Vine St
- 25th St Pennsylvania Ave Poplar St
- 26th St Penrose Ave I-76
- 26th St Pennsylvania Ave Girard Ave
- Upsal St Germantown Ave Cheltenham Ave
- 29th St Girard Ave Hunting Park Ave
- Vare Ave Passyunk Ave 34th St
- Verree Rd Oxford Ave Bustleton Ave
- 30th St Market St Arch St
- 33rd St Convention Ave Lancaster Ave
- 33rd St Girard Ave Ridge Ave
- 34th St I-76 University Ave
- 34th St Market St Lancaster Ave
- 38th St Baltimore Ave Haverford Ave
- 42nd St Chester Ave Baltimore Ave
- 49th St Grays Ave Woodland Ave
- 52nd St Kingsessing Ave Chester Ave
- 52nd St Whitby Ave Parkside Ave
- 58th St Hoffman Ave Baltimore Ave
- 63rd St Passyunk Ave Lindbergh Blvd
- 63rd St Market St City Ave
- 65th St Lindbergh Blvd City Limits
- 84th St Bartram Ave City Limits





[phila.gov/streets](http://phila.gov/streets)



[www.VisionZeroPhl.com](http://www.VisionZeroPhl.com)

