

Eric Madsen
Permit Philly LLC
License No: 051233
docs@permitphilly.com
267.744.4200

August 26th, 2021

Philadelphia Art Commission
1515 Arch St., 13th Floor
Philadelphia, PA 19102

RE: Accessory signage at For Eyes located at 1711 Chestnut Street

To the Art Commission:

Please find attached renderings of a proposed illuminated accessory sign above an existing metal awning at 1711 Chestnut Street. The rendering package also includes site plans and photos of existing site conditions.

The sign permit applications for this matter are **GP-2021-008884** and **ZP-2021-009964**.

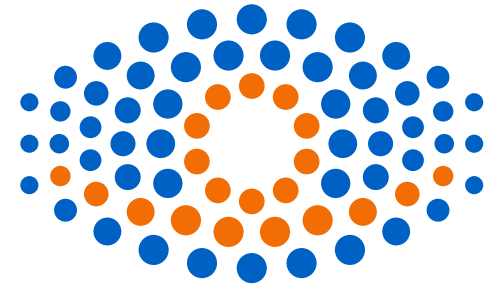
The Commission's Decision and all communication should come to me, Eric Madsen, at the email and phone number above.

Thank you,

A handwritten signature in black ink, appearing to read "E. Madsen", with a stylized flourish at the end.

Eric Madsen
Owner, Permit Philly LLC

For Eyes®



1711 Chestnut St., Philadelphia, PA 19103
Philadelphia Art Commision Submission 07.27.21

LIST OF EXHIBITS


- | | |
|--|----------------------------------|
| 01 Title/List of Exhibits | 08 Dimensioned Elevation |
| 02 Existing Facade (Far) | 09 Superimposed Drawing |
| 03 Existing Facade (Near) | 10 Neighborhood Photos |
| 04 Perspective Drawing | 11 Neighborhood Photos |
| 05 Perspective Drawing (Side View) | 12 Neighborhood Photos |
| 06 Proposed Sign Placement (GIS Maps) | 13 Signage Specifications |
| 07 Proposed Sign Placement (Floor Plan) | |

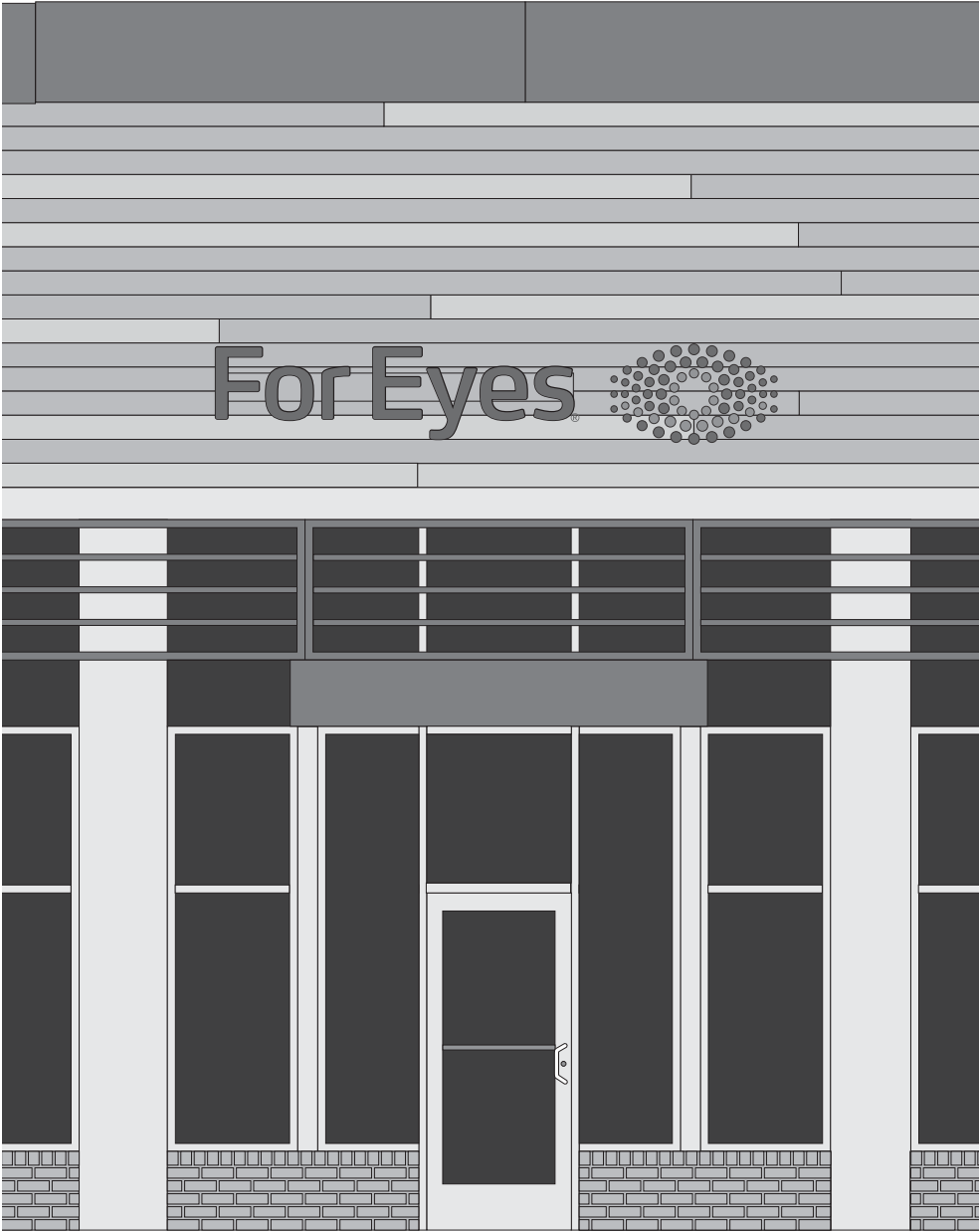


Claude Ballbe	claude@signsunlimitedusa.com	Approval Signature:	Please check all spelling, quantities, colors, and materials before approving	<div><div><div>SIGNS:UNLIMITED</div><div>communicate your identity</div></div><div>6801 Mount Hermon Church Rd, Building C Durham, NC 27705</div></div>
919-552-8689	www.signsunlimitedusa.com			
07.27.21	<div><div>UL</div><div>Underwriters Laboratories Inc.® UL File #E225670</div></div>			
Notes:				

©COPYRIGHT NOTICE: Signs Unlimited expressly reserves its common law copyright and other property rights in these drawings. These drawings are not to be reproduced, changed or copied in any form or manner without written expressed permission from Signs Unlimited or its affiliates.



Claude Ballbe	claude@signsunlimitedusa.com	Approval Signature:	Please check all spelling, quantities, colors, and materials before approving	<div><div><div>SIGNS:UNLIMITED</div><div>communicate your identity</div></div><div>6801 Mount Hermon Church Rd, Building C Durham, NC 27705</div></div>
919-552-8689	www.signsunlimitedusa.com			
07.27.21	<div><div></div><div>Underwriters Laboratories Inc.® UL File #E225670</div></div>	Notes:		
©COPYRIGHT NOTICE: Signs Unlimited expressly reserves its common law copyright and other property rights in these drawings. These drawings are not to be reproduced, changed or copied in any form or manner without written expressed permission from Signs Unlimited or its affiliates.				



Claude Ballbe	claude@signsunlimitedusa.com
919-552-8689	www.signsunlimitedusa.com
07.27.21	 Underwriters Laboratories Inc.® UL File #E225670

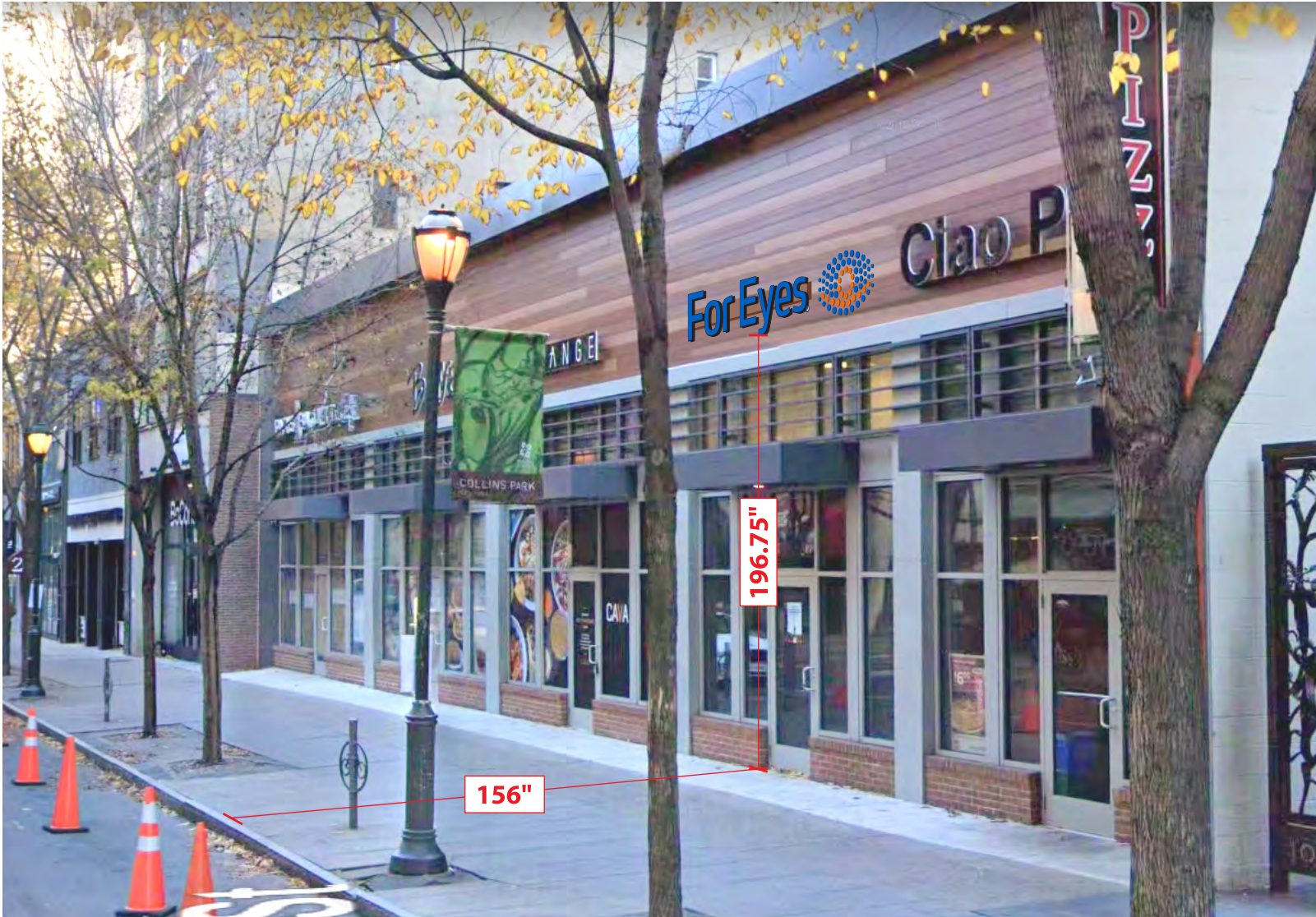
Approval Signature:

Please check all spelling, quantities,
colors, and materials before approving

Notes:

SIGNS UNLIMITED
communicate your identity

6801 Mount Hermon Church Rd, Building C
Durham, NC 27705



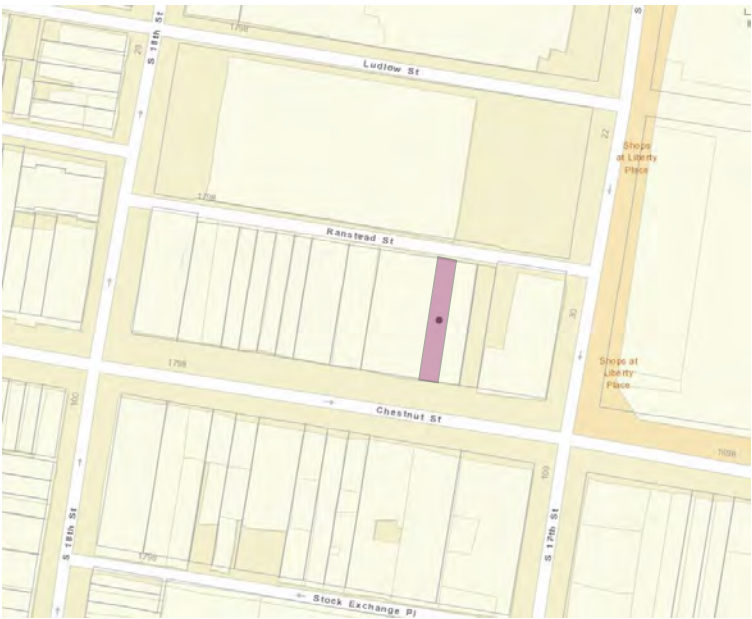
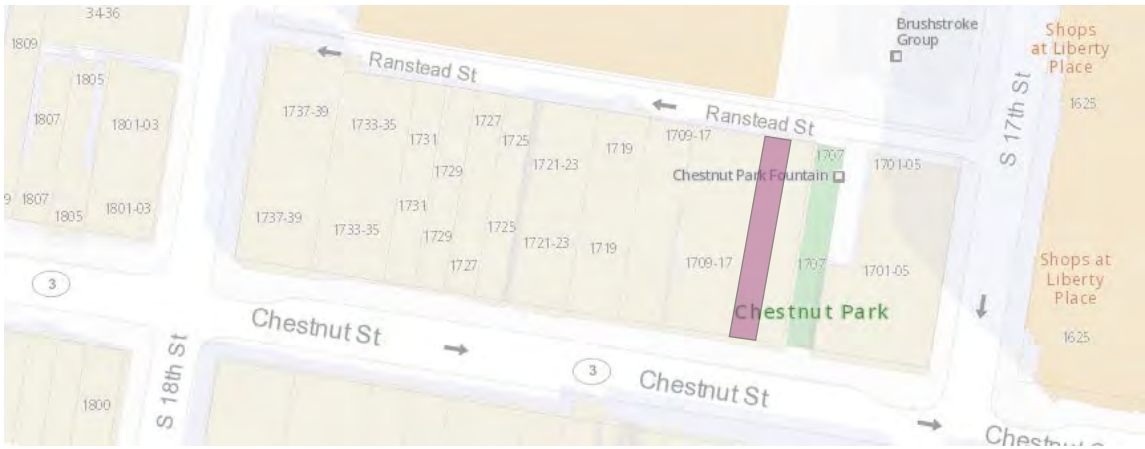
Claude Ballbe	claude@signsunlimitedusa.com
919-552-8689	www.signsunlimitedusa.com
8/26/21	 Underwriters Laboratories Inc.® UL File #E228670

Approval Signature:

Notes:

Please check all spelling, quantities, colors, and materials before approving

SIGNS UNLIMITED
communicate your identity
6801 Mount Hermon Church Rd, Building C
Durham, NC 27705



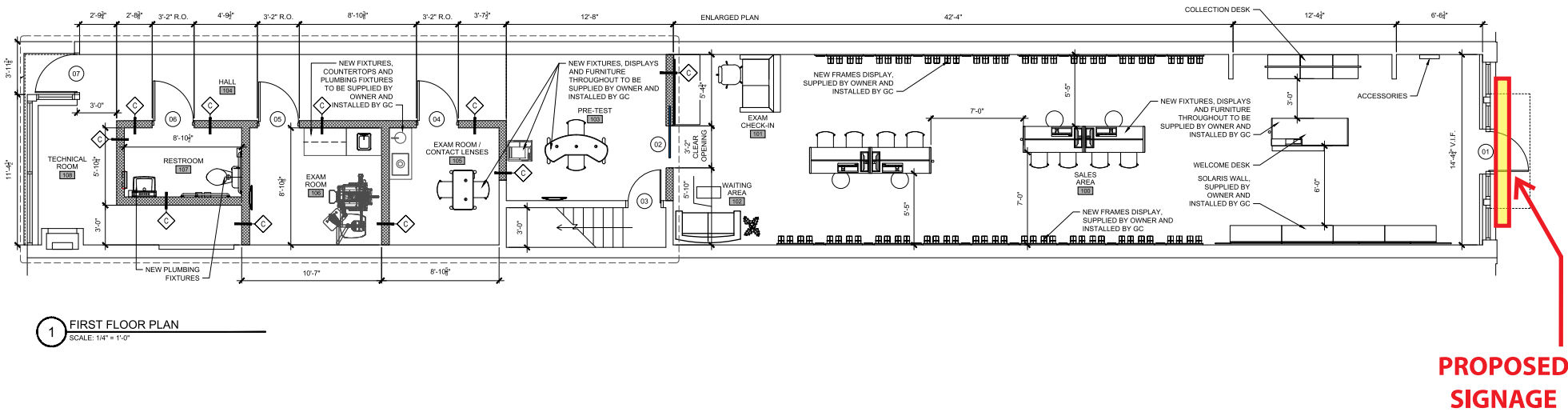
Claude Ballbe	claude@signsunlimitedusa.com
919-552-8689	www.signsunlimitedusa.com
8/26/21	 Underwriters Laboratories Inc.® UL File #E229670


Approval Signature:

Notes:

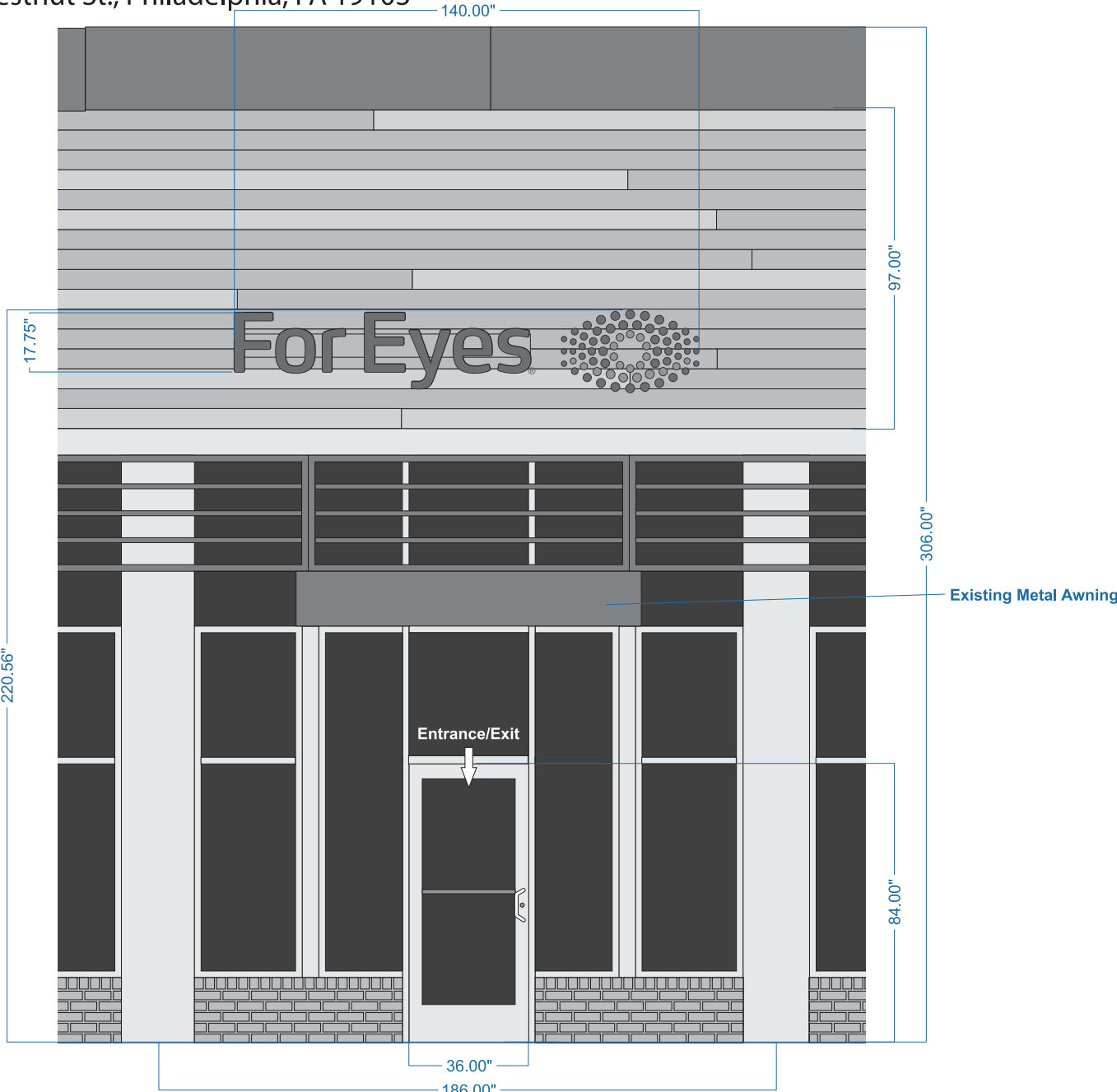
Please check all spelling, quantities, colors, and materials before approving

SIGNS UNLIMITED
communicate your identity
6801 Mount Hermon Church Rd, Building C
Durham, NC 27705



Claude Ballbe	claude@signsunlimitedusa.com	Approval Signature:	Please check all spelling, quantities, colors, and materials before approving	<div>SIGNS UNLIMITED communicate your identity</div> <div>6801 Mount Hermon Church Rd, Building C Durham, NC 27705</div>
919-552-8689	www.signsunlimitedusa.com			
8/26/21	<div> Underwriters Laboratories Inc.® UL File #E225670</div>			
©COPYRIGHT NOTICE: Signs Unlimited expressly reserves its common law copyright and other property rights in these drawings. These drawings are not to be reproduced, changed or copied in any form or manner without written expressed permission from Signs Unlimited or its affiliates.				

SCALE
1/4 IN = 1 FT



Claude Ballbe	claude@signsunlimitedusa.com
919-552-8689	www.signsunlimitedusa.com
07.27.21	 Underwriters Laboratories Inc.® UL File #E225670

Approval Signature:


Notes:

Please check all spelling, quantities,
colors, and materials before approving

SIGNS UNLIMITED
communicate your identity
6801 Mount Hermon Church Rd, Building C
Durham, NC 27705



Claude Ballbe	claud@signsunlimitedusa.com
919-552-8689	www.signsunlimitedusa.com
07.27.21	 Underwriters Laboratories Inc.® UL File #E225670

Approval Signature:	Please check all spelling, quantities, colors, and materials before approving	 communicate your identity 6801 Mount Hermon Church Rd, Building C Durham, NC 27705
Notes:		

Shoppes to Left




Shoppes to Right



Shoppes Across Street

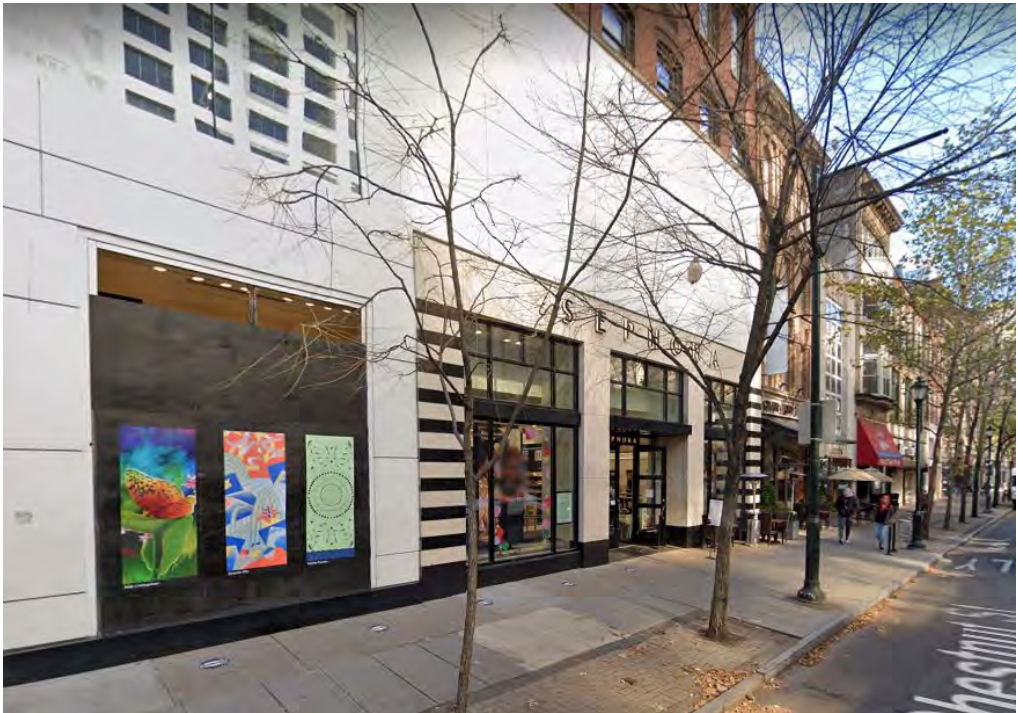


Claude Ballbe	claude@signsunlimitedusa.com	Approval Signature:	Please check all spelling, quantities, colors, and materials before approving	<div>SIGNS UNLIMITED communicate your identity 6801 Mount Hermon Church Rd, Building C Durham, NC 27705</div>
919-552-8689	www.signsunlimitedusa.com			
8/26/21	<div> Underwriters Laboratories Inc.® UL File #E225670</div>			
©COPYRIGHT NOTICE: Signs Unlimited expressly reserves its common law copyright and other property rights in these drawings. These drawings are not to be reproduced, changed or copied in any form or manner without written expressed permission from Signs Unlimited or its affiliates.				

Shoppes Across Street (Left)



Shoppes Across Street (Right)

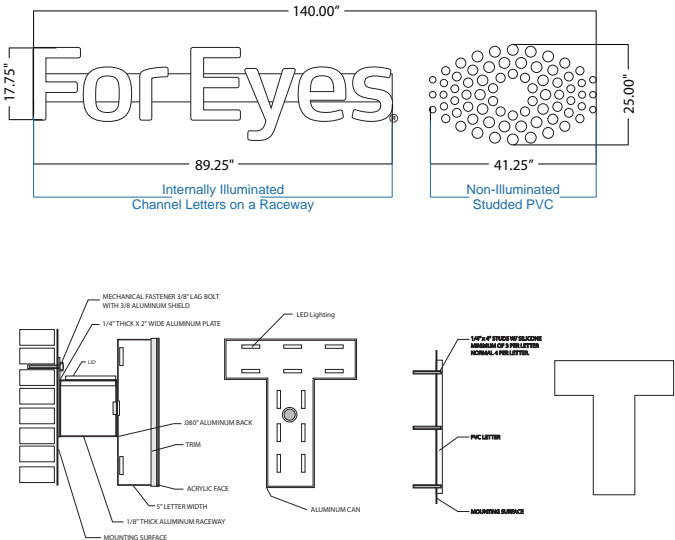
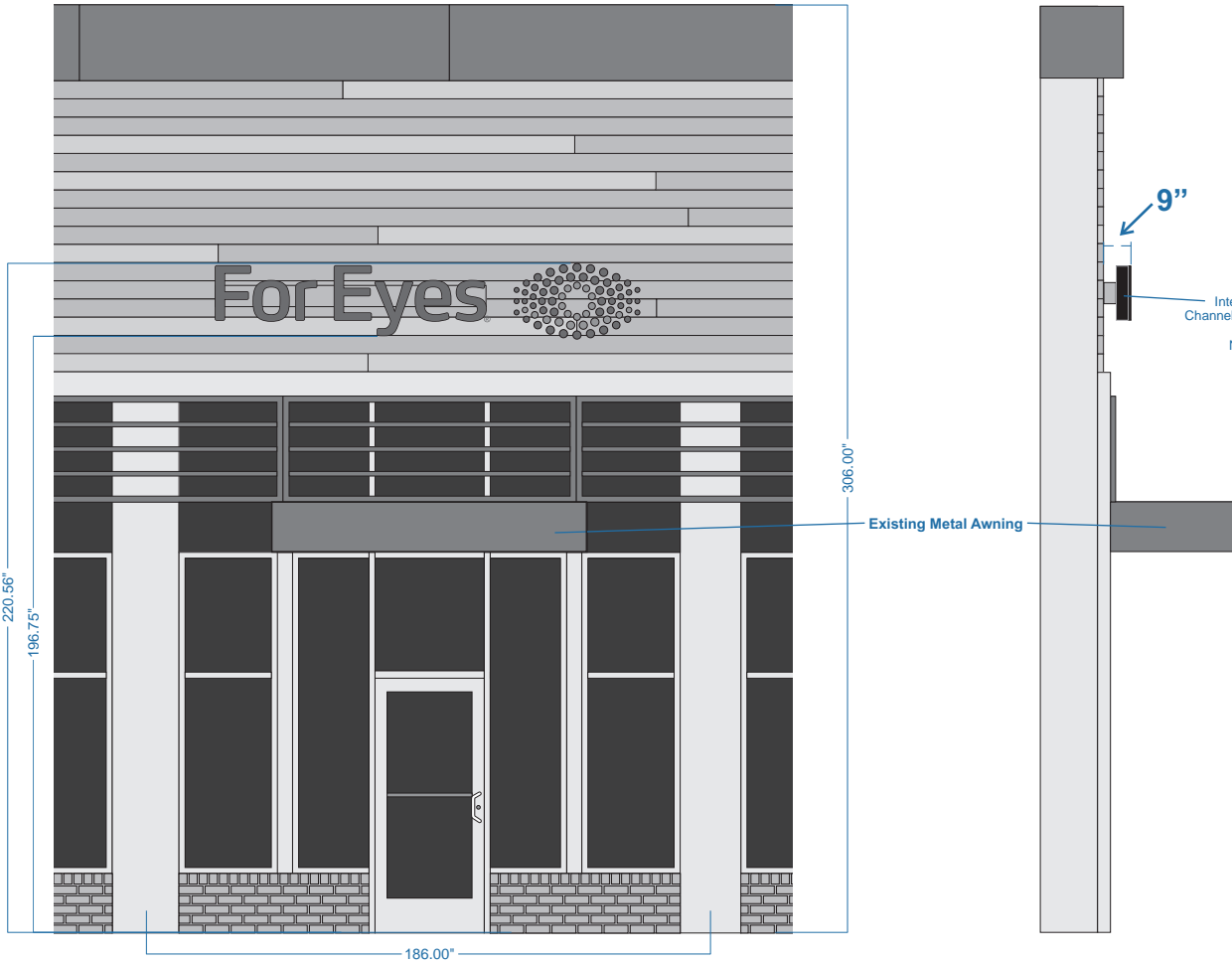


For Eyes (Store #2)
1711 Chestnut St.
Philadelphia, PA 19103

PG 13
Front & Side View

Trim:
1" Black Gemtrim
Return Color:
Black
Face:

1/8" White Acrylic w/ Applied Vinyl
Vinyl Color:
To Match PMS 2935 C Blue
Letter Interior:
Gloss White
Internal Illumination:
White LED's
Raceway Color:
To Match Facade
Raceway Size:
4"x7" 0.125 Extruded Aluminum
Mounting:
Hanging Bars Flush to Fascia
Sq. Ft. Signage:
24.30
Sq. Ft. Allowance:
TBD



Claude Ballbe	claude@signsunlimitedusa.com
919-552-8689	www.signsunlimitedusa.com
07.27.21	 Underwriters Laboratories Inc.® UL File #E225670

Approval Signature:

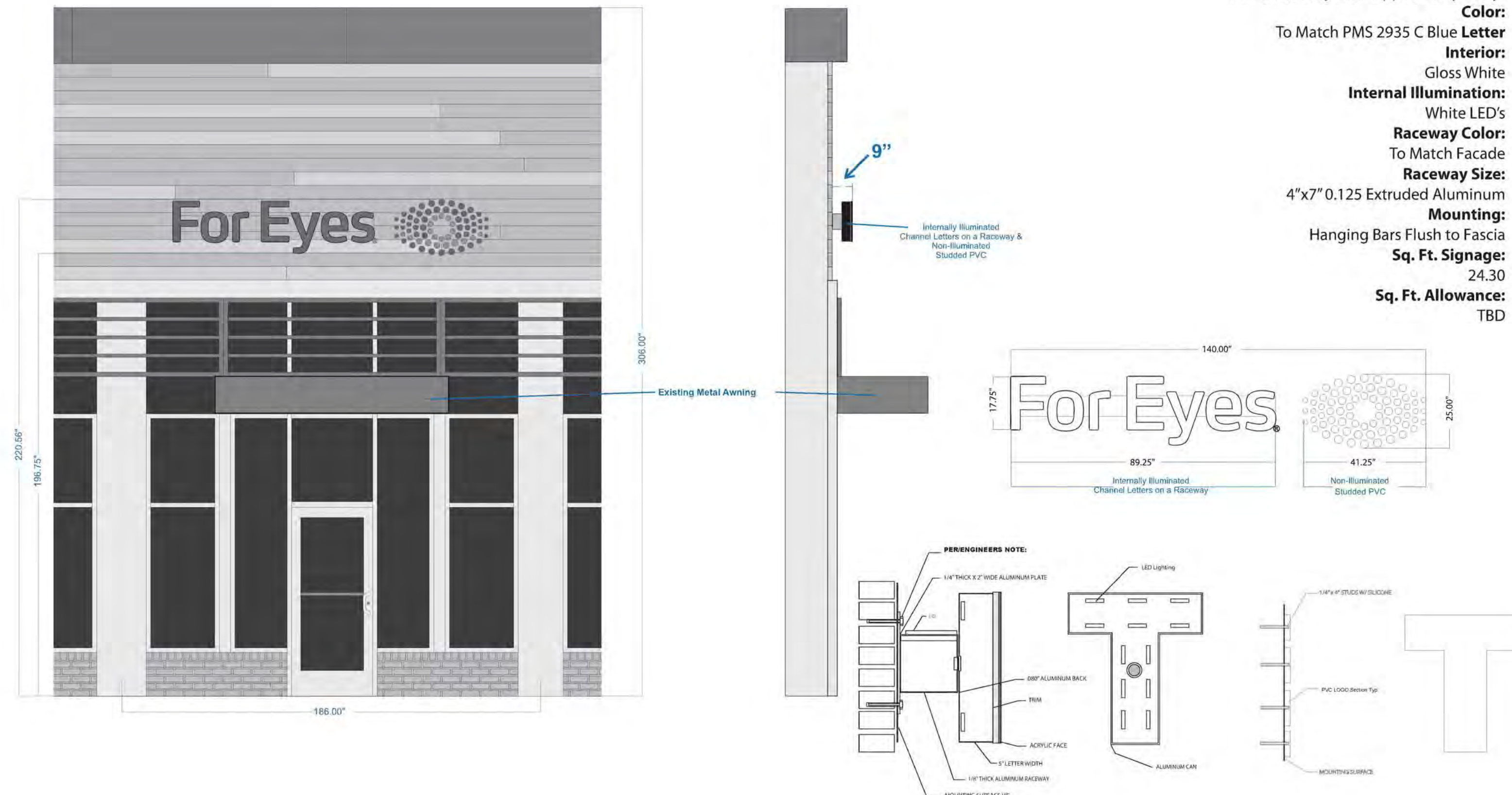
Notes:

Please check all spelling, quantities,
colors, and materials before approving

SIGNS UNLIMITED
communicate your identity
6801 Mount Hermon Church Rd, Building C
Durham, NC 27705

PG 13
Front & Side View

Trim:
1" Black Gemtrim
Return Color:
Black
Face:
1/8" White Acrylic w/ Applied Vinyl **Vinyl**
Color:
To Match PMS 2935 C Blue **Letter**
Interior:
Gloss White
Internal Illumination:
White LED's
Raceway Color:
To Match Facade
Raceway Size:
4"x7" 0.125 Extruded Aluminum
Mounting:
Hanging Bars Flush to Fascia
Sq. Ft. Signage:
24.30
Sq. Ft. Allowance:
TBD



Claude Ballbe	claude@signsunlimitedusa.com	Approval Signature:	Please check all spelling, quantities, colors, and materials before approving	<div>SIGNS UNLIMITED</div> <div>communicate your identity</div> <div>6801 Mount Hermon Church Rd, Building C Durham, NC 27705</div>
919-552-8689	www.signsunlimitedusa.com			
07.27.21	<div><div>UL</div><div>Underwriters Laboratories Inc. UL File #E226670</div></div> Notes:			

©COPYRIGHT NOTICE: Signs Unlimited expressly reserves its common law copyright and other property rights in these drawings. These drawings are not to be reproduced, changed or copied in any form or manner without written expressed permission from Signs Unlimited or its affiliates.



DESIGN SPECIFICATIONS			
IBC	2018	with	PA amendments
ASCE	7-16	Minimum Design Loads for Buildings & Other Structures	
ACI	318-14	Building Code Requirements for Structural Concrete	
ANSI/AISC	360-16	Specification for Structural Steel Buildings	
DESIGN LOADS			
Wind	V =	115	mph
Exposure	C		
Risk Cat.	II		
Grnd. Snow	Pr =	35	psf



MURDOCH
ENGINEERING
SIGN STRUCTURE PROFESSIONALS

2 HUMMINGBIRD CT.
HOWELL, NJ 07761
(973) 570-8215

Project: 2132643

Joe Murdoch

Joe Murdoch, PE
Professional Engineer
PA PE Lic. #PE082030
Exp. 9/30/2021

8/9/2021

FASTENER SCHEDULE (RACEWAY)			WALL CONSTRUCTION			
HARDWARE	DIAM.	O.C. Spacing Max.	MASONRY (CMU- Block)	EIFS/STYKIT OVER MIN. 3/2" PLYWOOD	EIFS/STYKIT OVER GYPSUM/ DENSGLASS	METAL PANEL OVER METAL STUD
THRU-BOLT	3/8"	40in.	YES	YES	ONLY WITH BACKER (MIN. 3/4" PLYWOOD)	YES
POWERS DEL. EXPANSION ANCHOR	3/8"	45in.	YES ¹	NO	NO	NO
SNAP TGGLE BOLT TYPE BC	3/8"	35in.	IF THROUGH BLOCK FACE	YES	ONLY WITH MIN. 3/4" PLYWOOD BACKER	YES with plywood backer
LAG BOLT	3/8"	37in.	NO	1" SOLID WOOD PENETRATION REQ'D	NO	NO
Tek-Screw	1/4"	38in.	NO	NO	NO	YES into 1/8" Alum or 1/16" Steel

1.) Fasteners must be evenly spaced Top and Bottom w/4" Side end clearance. Thru-Bolt Framing with washer.
2.) Expansion anchors require a minimum 5" solid masonry embedment installed per tie-guide for wall construction type
3.) Tek-Screw into Alum. Require SS Screw - Full Thread Embedment Required.
4.) Thru-Bolts (All-Threaded) rods in L2x2x2(16)" SI. Angle or 2x6 lumber spanning two(2) wall studs per/Bolt - Rod
5.) Back formed raceway box is unacceptable without Structural angle Framing at all corners or Gusssets welded in at 24" O.C.
6.) EPS Driwall will provide 1/2" O. Solid HD Alum. Pipe. Pipe spacer at all bulding connections.
7.) Recurring Row assumed to be 7.00. Inches full or greater is acceptable.

Engineers Connection Note:
 * Raceway Mounted sign:
 Provide Fasteners with washer using the fastener schedule for existing wall construction type to determine the fastener type and maximum O.C. bolt spacing to install along the top and bottom of raceway box with a 4" Maximum side end clearance.
 * LOGO
 Provide One(1) 1/4"Ø All-Threaded Stud per LOGO Section, Drilled, tapped and epoxied into sign through existing 1/2" thick Plywood sheathing min. or 3/4" plywood board spanning and glued into stud bay where logo is installed with Liquid Nails type LN-950 adhesive or GE SC57000 Generously coat rods and end-fill drill holes with adhesive just prior to installation.





