



Broad, Germantown, and Erie Project

Phased Approach



Project Overview

Why Broad, Germantown, and Erie?

The intersection is a public transportation hub and shopping district, with remarkable architecture, rich history, and a strong community.

Previous investment in the area has not reflected this.

In 2017, the Mayor formed the Broad, Germantown, and Erie Task Force to build on the community's work to correct this disparity.



Project Goals

- Make the intersection safer for pedestrians
- Create jobs and support businesses
- Improve and create new public spaces
- Honor local history and culture



BGE Project Site





Community Participation

Task Force Membership



Inter-Agency Steering Group

Mayor's Office
 Office of Transportation, Infrastructure & Sustainability (OTIS)
 Commerce Department
 Philadelphia City Planning Commission (PCPC)
 Streets Department (Transportation and Sanitation)
 Rebuild
 Philadelphia Police Department
 5th Council District (Clarke)
 8th Council District (Bass)
 SEPTA
 Pennsylvania Department of Transportation
 Philadelphia Parking Authority
 Delaware Valley Regional Planning Commission
 Managing Director's Office
 Philadelphia Historical Commission
 Department of Public Property
 Philadelphia Gas Works
 Department of Licences and Inspections
 Free Library

Community Partners

Called to Serve CDC*
 Nicetown Tioga Improvement Team*
 Hunting Park United*
 Hunting Park CDC*
 Nicetown CDC*
 NorthIO*
 13th Democratic Ward RCO
 13th Republican Ward RCO
 Bethune Elementary School
 Community Design Collaborative
 Community Legal Services
 COSACOSA art at large, Inc.
 Kenderton Elementary School
 Mercy Neighborhood Ministries
 Multicultural Academy Charter School
 North Broad Renaissance
 Temple University Hospital
 The Center for Returning Citizens
 Tioga United

2021/2021 Outreach Methods

(Developed with input from community leaders)

Online Survey



Mailers



In-Person



Voicemail + Text



Email



Press Coverage



Flyers



Meetings



Social Media + Video



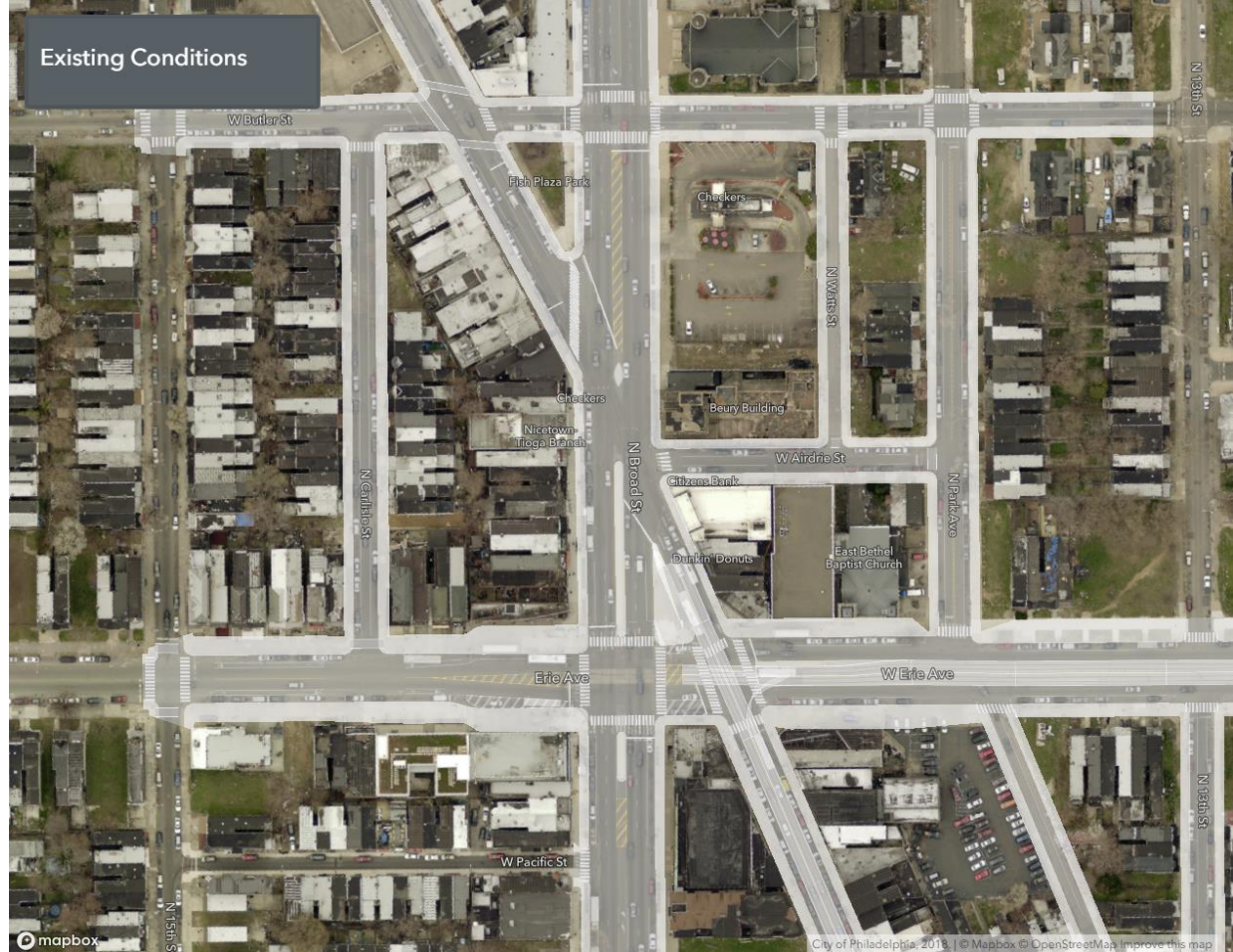
PPE Giveaway





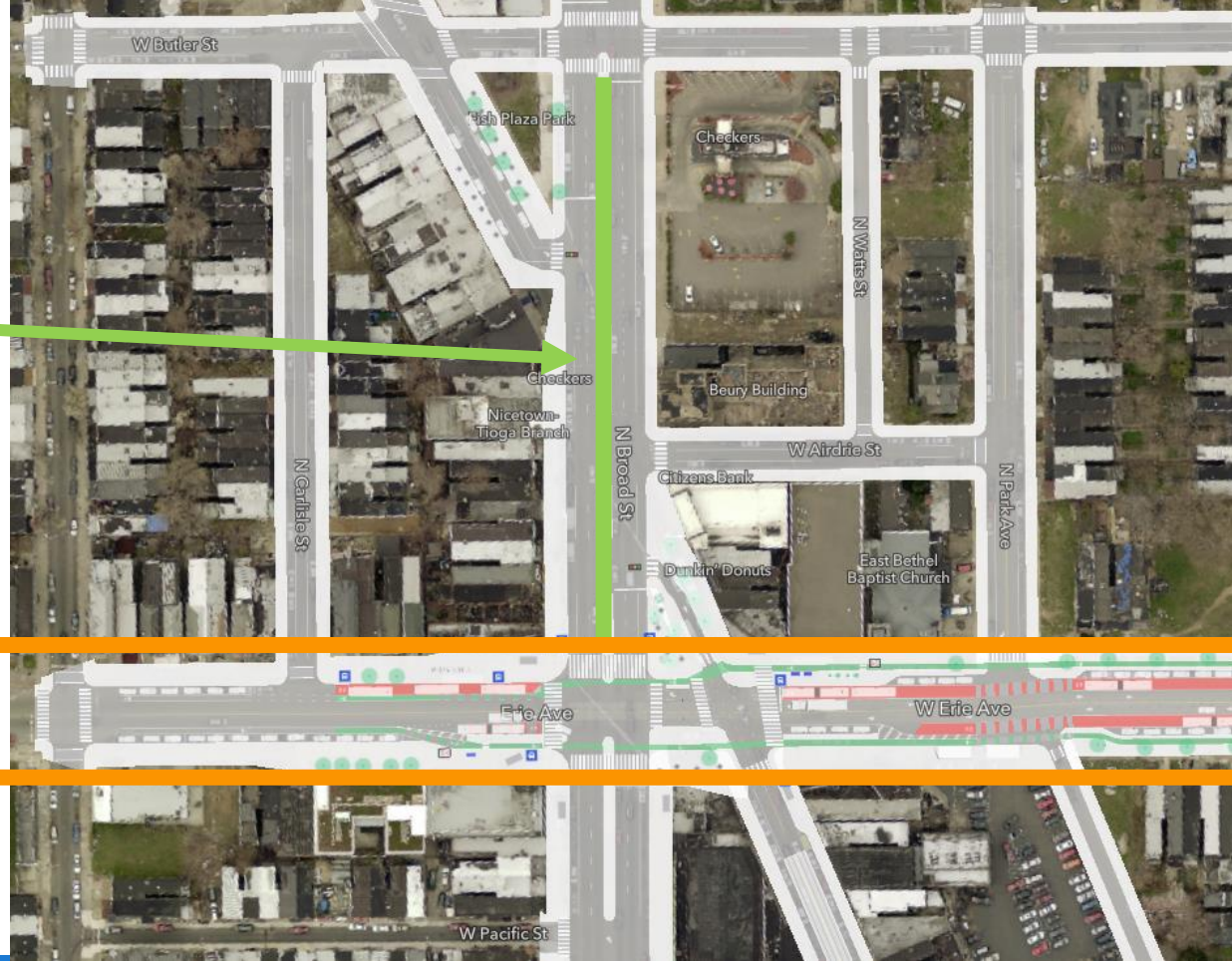
Previous Approach

BGE Today



Previous Approach

- Concrete median on Broad Street, from Erie to Butler solves critical safety issue
- Remove trolley track on Erie Avenue, make it multimodal



Previous Approach

- Median then creates expanded triangles for new public space
- Allows for “raised” treatment (e.g. South Broad Street crosswalks) at lower triangle



Public Space Design: Results

Based on landscape-focused survey taken by 700+ community members and numerous community conversations



LAWN



SEAT WALL



SCULPTURAL
SEATING



SAFETY
BOLLARDS



FIXED SEATING



TREE GRATES



TEXT IN PAVING

Public Space Design: Results



SHADE
STRUCTURE



FIXED SEATING



SAFETY
BOLLARDS



SEAT WALL



SCULPTURAL
SEATING



PERENNIALS

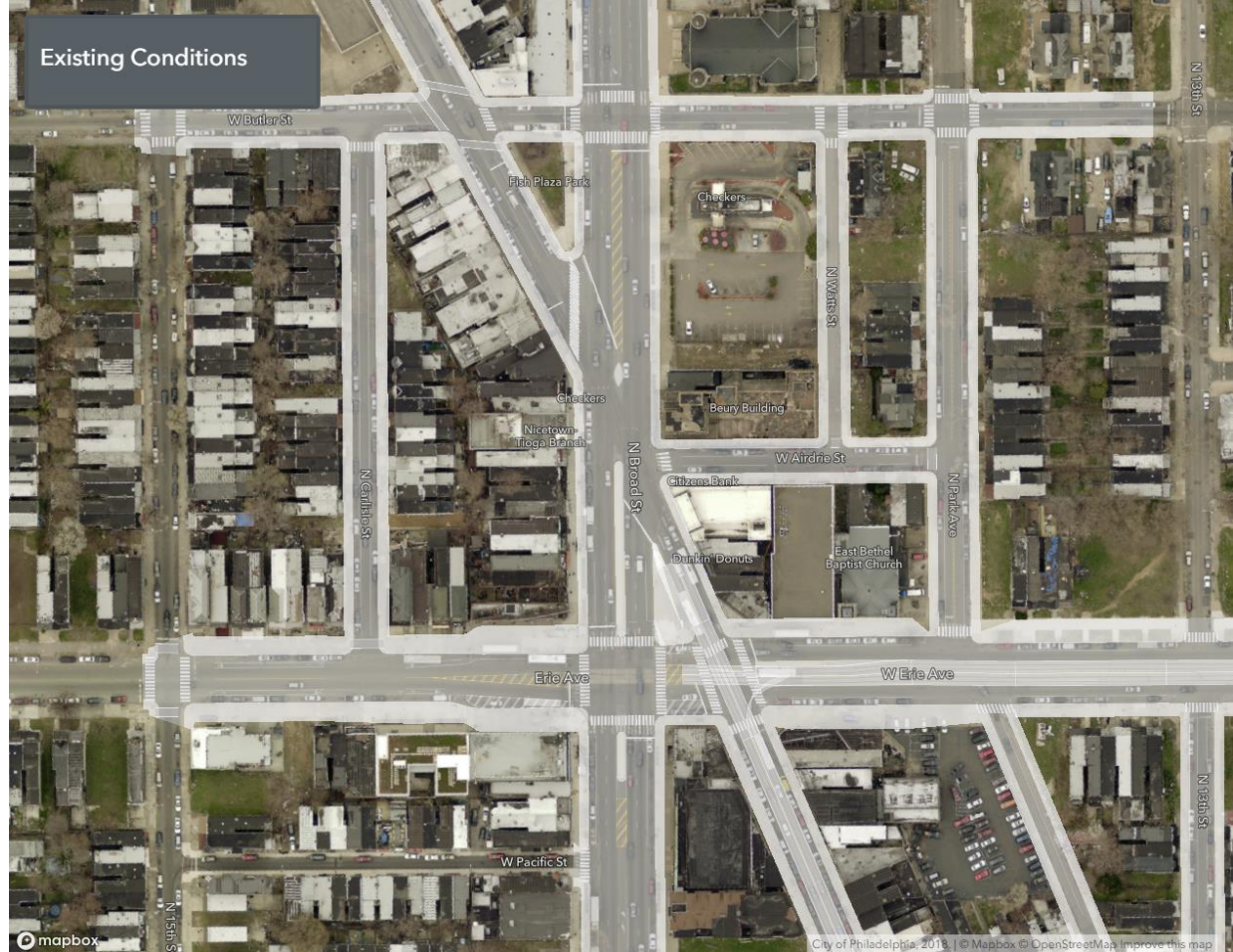


BRIGHT
COLORS



New Phased Approach

BCE Today

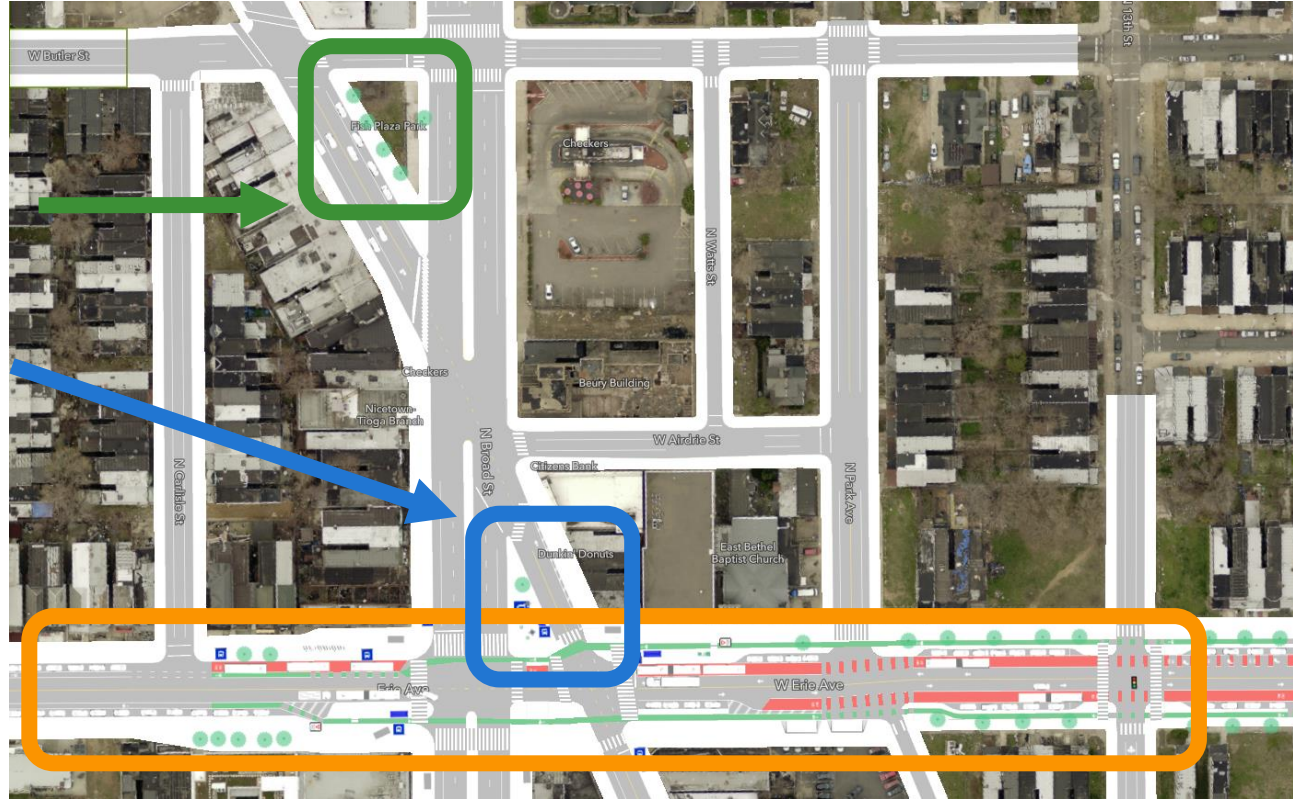


Phase 1

Park at
Butler Triangle

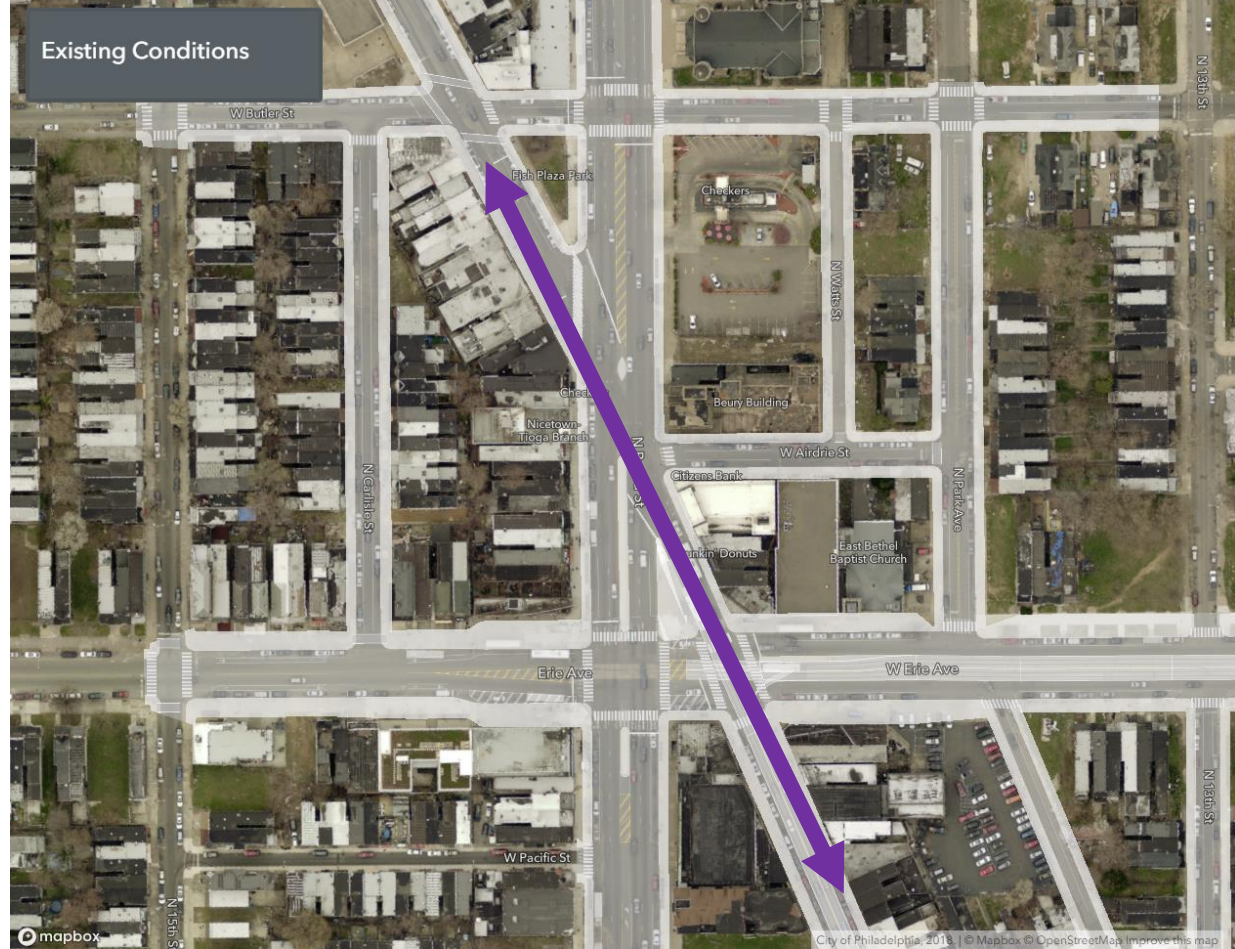
Transit Hub at
Erie Triangle

Erie Avenue
Redesign



Phase 2

Reevaluate Germantown Avenue Crossing and Public Spaces



Phase 1

Germantown/Broad Public Spaces and Pedestrian Safety

- Median on Broad Street extended (but does not block Germantown) with pedestrian “tips”
- Lower triangle will be focused on transit amenities
- Upper triangle still sees improvements, but footprint stays the same with eye on future evolution
- **Germantown Avenue will stay fully "open" in Phase 1**



Phase 1

Erie Avenue Transit-Focused Redesign

- Old trolley track removal
- ADA-compliant bus boarding platforms & SEPTA elevator
- Shelters & other amenities
- Sidewalk-level bike path
- Template for future improvements for rest of Erie Avenue corridor (City Transit Plan priority and a High Injury Network street)



Phase 2 – revisit in future years

Germantown/Broad Public Spaces and Pedestrian Safety

- Congestion issues related to the Germantown crossing, primarily in the southbound direction
- Safety issues related to Germantown's long crossing of Broad
- "Raised" treatment at lower triangle

BGE Triangle Today





Public Spaces in Phase 1

Phase 1 - Upper Triangle

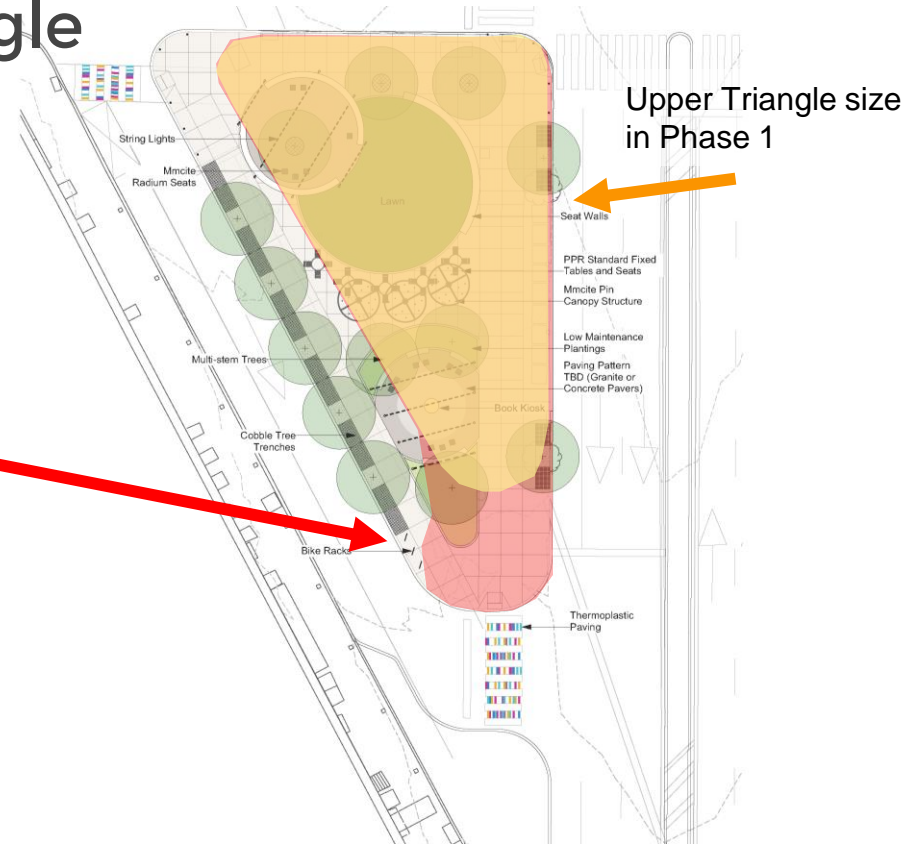
Priorities to maintain:

- Trees
- Seating and tables
- Lighting (string & additional pedestrian scale)

Additional component:

- Nose extended & parking lane cut out

The revised design will still use the survey results as a guide for the updated design



Phase 1 - Lower Triangle

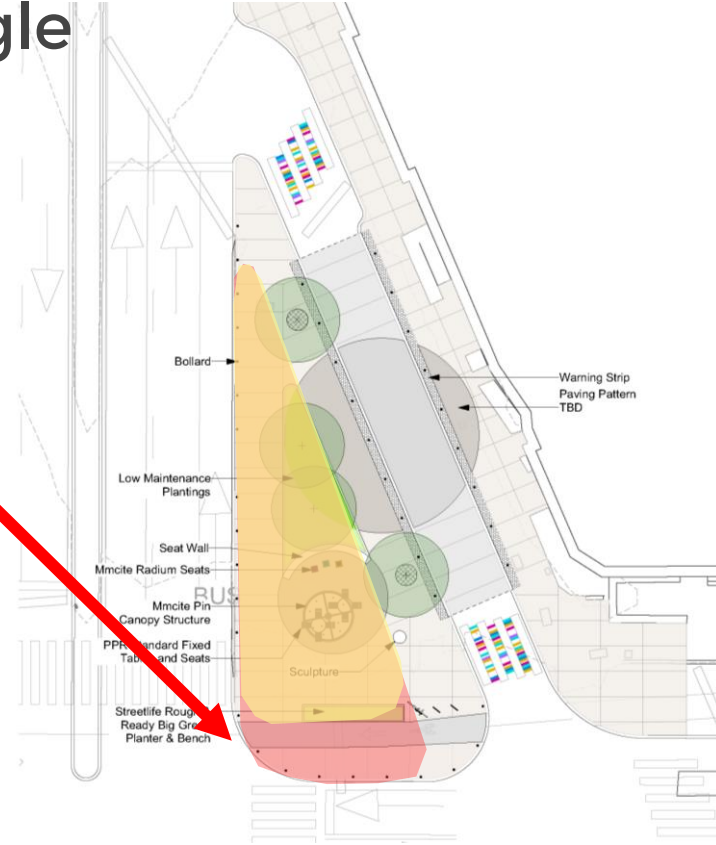
Additional component:

- SEPTA elevator

Priorities to maintain:

- Pedestrian improvements across Erie Avenue
- Better bus shelter
- Trees and landscaping, where possible

The revised design will be coordinated with SEPTA and will still use the survey results as a guide for the updated design



Benefits of Phased Approach

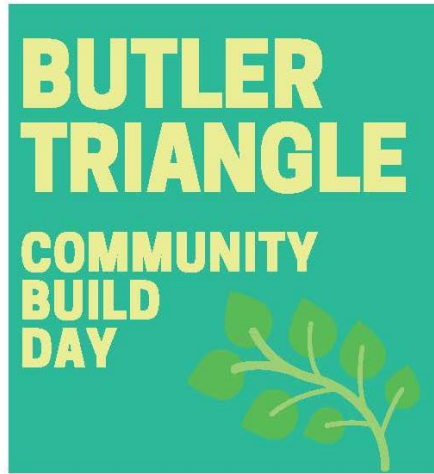
- Increased maintenance and landscaping care will be scaled up over time
- Allows us to assess the work and improve spaces over time
- Allows further analysis and engagement on changes to Germantown Avenue, a key issue for some stakeholders
- Prioritizes overdue accessibility improvements for SEPTA riders

Next Steps

- Continue to communicate about project and keep everyone informed!
- Partner with BGEC on all communications
- Prepare Butler Triangle for use during winter
- Review SEPTA's designs for Erie Station elevator
- Hold in-person interactions at intersection to provide updates



Brought to you by:



Celebrate the official opening of the park
at **Broad, Germantown & Butler.**

Plant two new trees!
Help paint the fence!
Hang out with friends and neighbors!



FOOD & LIGHT
REFRESHMENTS

RAIN DATE: SATURDAY, OCTOBER 9 FROM 10:00AM TO 2:00PM



Thank you!