

June 29, 2021

Philadelphia Art Commission  
One Parkway Building  
1515 Arch Street – 13<sup>th</sup> Floor  
Philadelphia, PA 19102  
Attn: C. Beige Berryman, AICP

RE: Climate Justice Initiative Mural Review, 18th and Spring Garden

Dear Ms. Berryman,

On behalf of the City of Philadelphia Mural Arts Program, I am requesting to be placed on the agenda for the July meeting to be held on July, 14, 2021. I am submitting this letter for a project in collaboration with a broad representation of 20-plus individuals, Indigenous groups, nonprofits, and other entities for a Climate Justice Initiative mural on the West Building of the Community College of Philadelphia at 18th and Spring Garden. This is our design review for this project.

The proposed mural location is a 110-foot wide west-facing facade of the Community College of Philadelphia's West Building, overlooking a corner green space at 18th Street and Spring Garden.

If you have any questions or require any additional information, please call me at 267-972-3944 or email at [shari.hersh@muralarts.org](mailto:shari.hersh@muralarts.org).

Thank you for your consideration

Sincerely,



Shari Hersh  
Director  
Environmental Justice Department

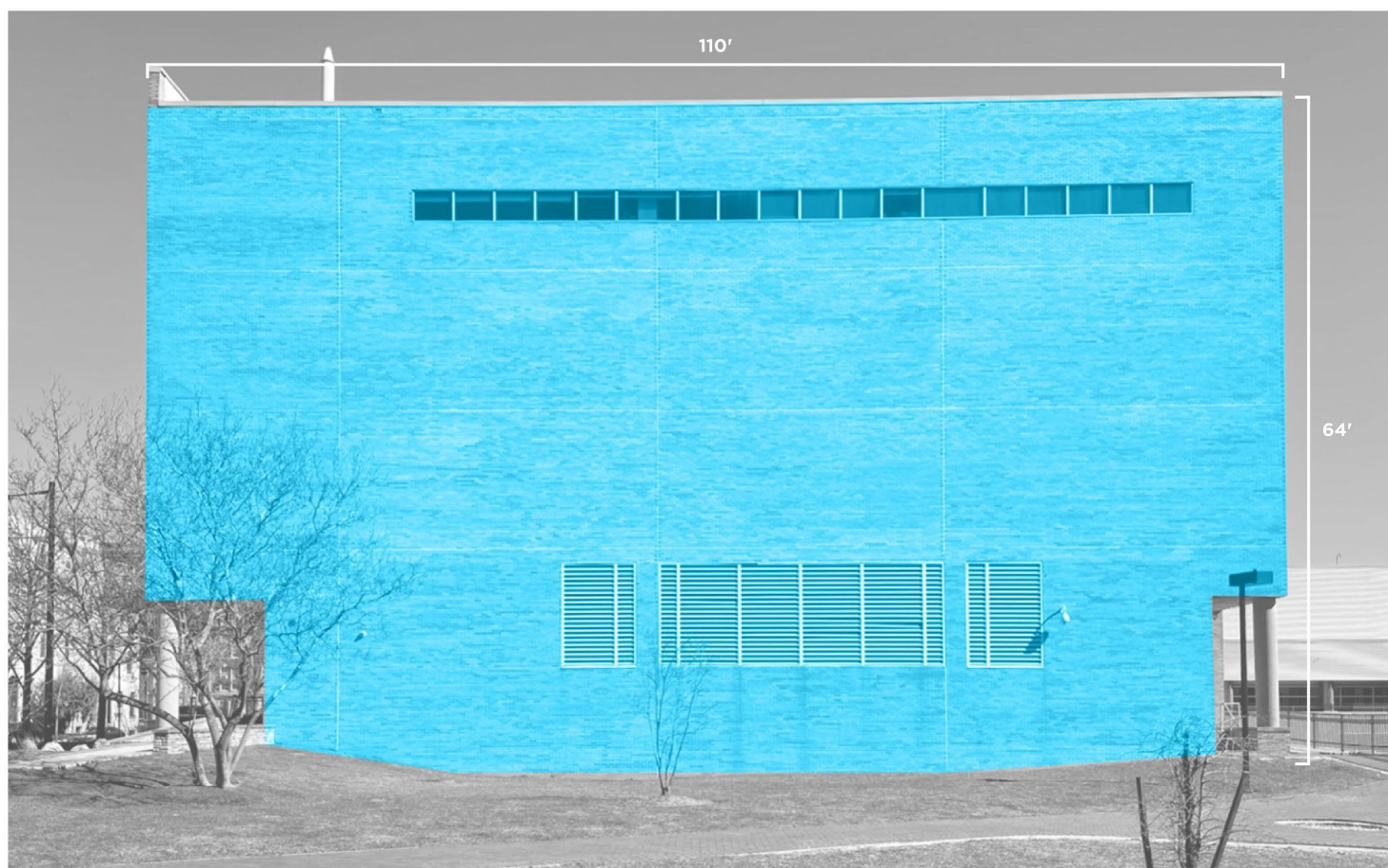


**LOCATION & CONTEXT - PLAN VIEW**



**LOCATION & CONTEXT - AERIAL VIEW**





**EXISTING FAÇADE VIEW LOOKING EAST**



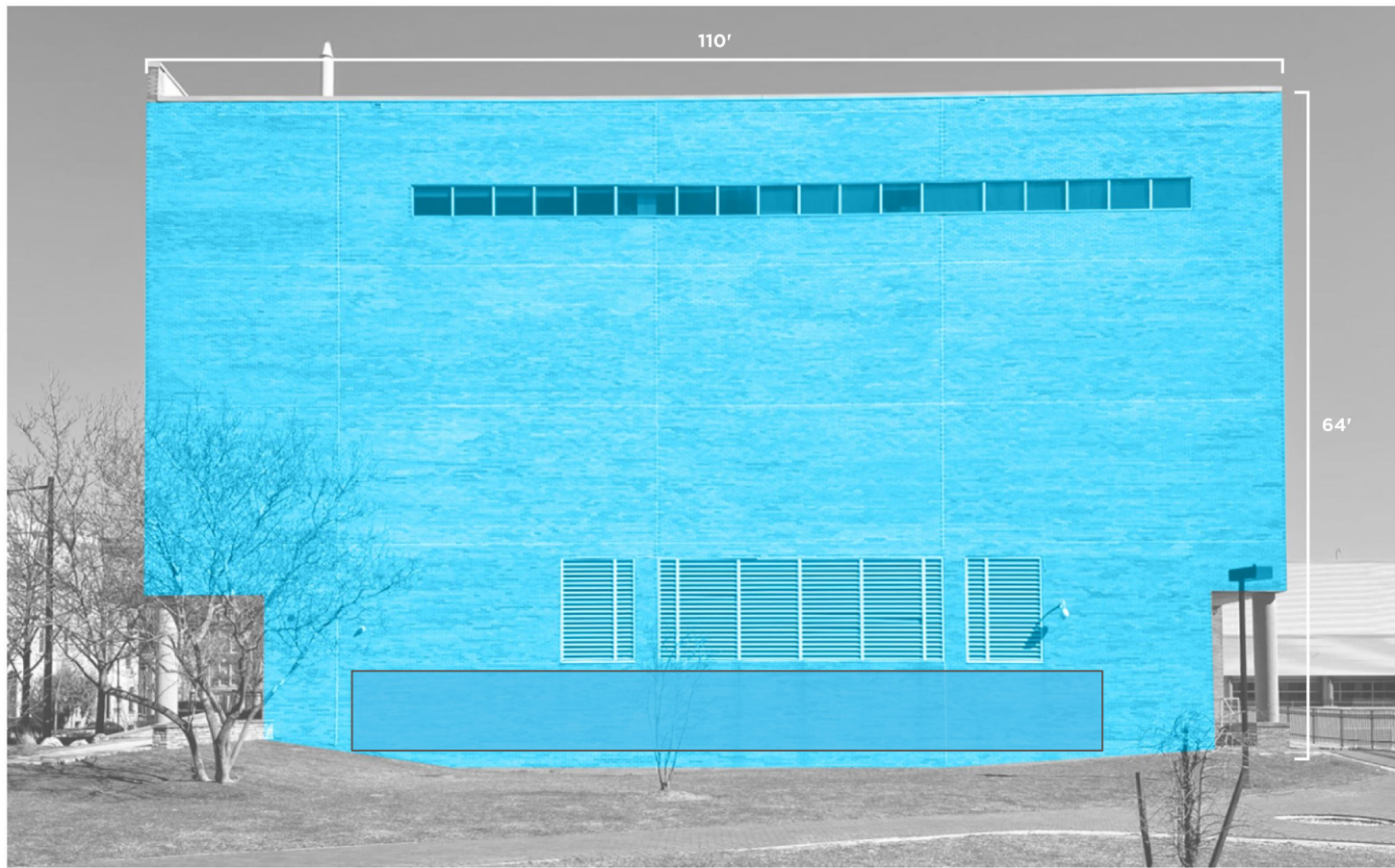
# *Art Commission Design Review*

*July 14, 2021*



Environmental Justice  
Department

This will be Philadelphia's **first**  
**Climate Justice mural.** It  
aims to be a **call to collective**  
**action** in our city.



**EXISTING FAÇADE VIEW LOOKING EAST**

Proposed Site Location

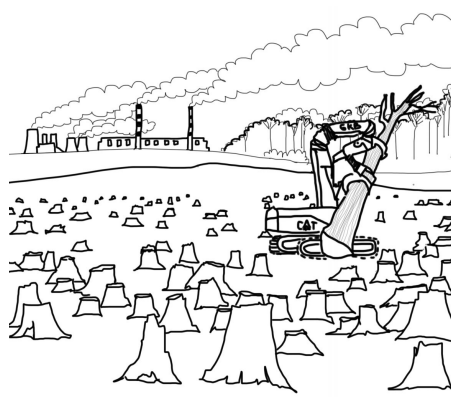


# Overarching Visual



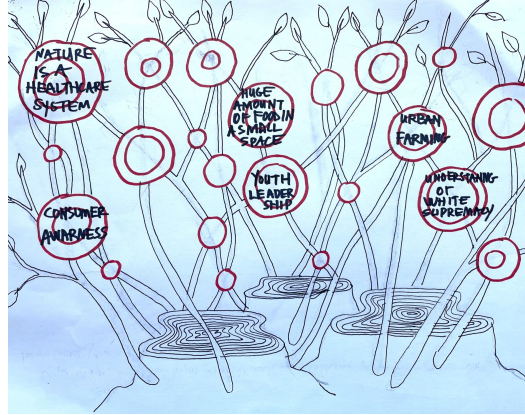
1

TURTLE ISLAND – ALL  
OUR RELATIONS



2

HARMS [ON BACK OF  
TURTLE ISLAND]



3

INTERCONNECTEDNESS –  
REGROWTH FORMING A WEB



4

CHANGE IS HAPPENING +  
HOPEFUL VISIONS OF  
FUTURE

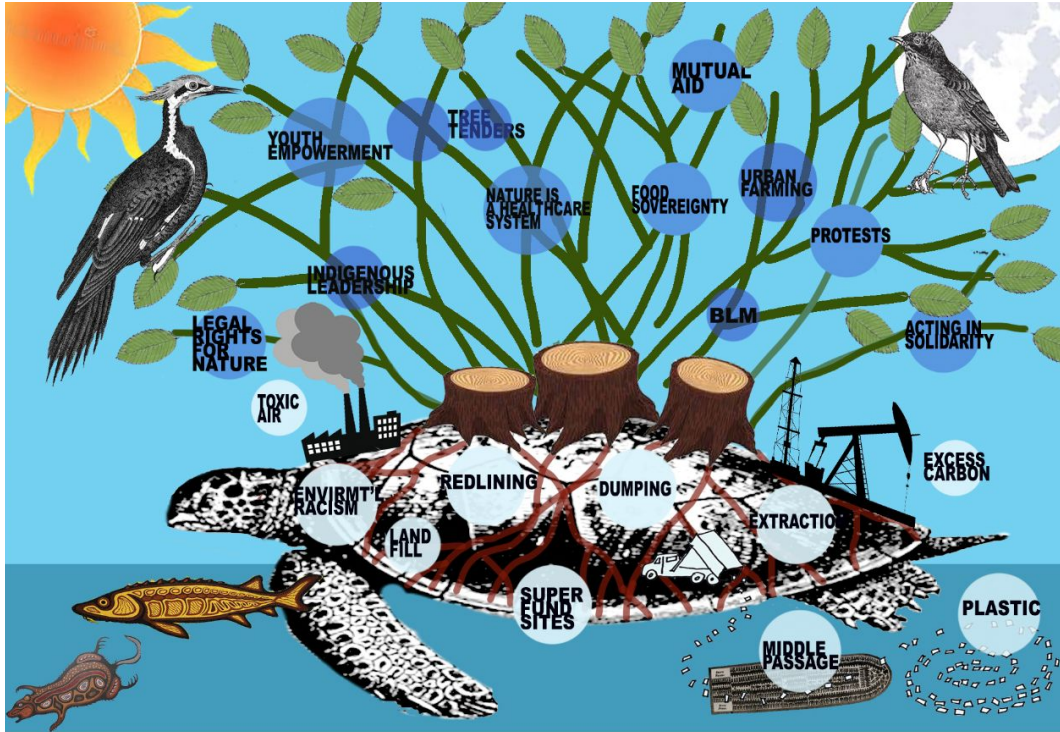


# Overarching Visual

4	<b>CHANGE IS HAPPENING + HOPEFUL VISIONS OF FUTURE</b> Change is already happening and inevitable. Our visions of the future inform our actions and the change we work towards and it is imperative for us to prioritize hope and a more just transition.
3	<b>INTERCONNECTEDNESS – REGROWTH FORMING A WEB</b> We are made more powerful through our connectedness. Recognizing the relatedness in our continued work for justice bolsters our efforts, movements, relationships with our allies and ALL OUR RELATIONS.
2	<b>HARMS [ON BACK OF TURTLE ISLAND]</b> Environmental racism, Indigenous erasure and endangered communities are disproportionate. Though these harms are felt more heavily by some communities, the harms of one is the harming of all. We are all responsible.
1	<b>TURTLE ISLAND – ALL OUR RELATIONS</b> Land is a central point of healing for everybody, especially people who have been targeted by environmental harms. It uplifts indigenous belief system

# Preliminary Conceptual Sketch

4
3
2
1



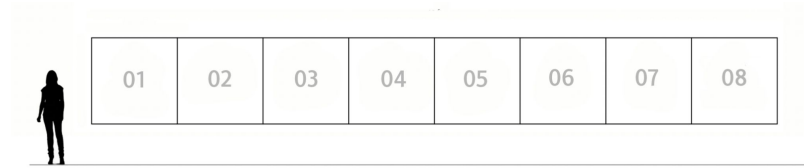


INFOGRAPHIC



Mural Arts  
Philadelphia

Environmental Justice  
Department



60 in 40 ft

01	02	03	04	05	06	07	08
Project Title	CCP Info/Stats	Lenapehoking All our Relations	Philadelphia Region	Land Circle	Air Circle	Trash Circle	Credits
CJ Description	Neighborhood info	Indigenous / Taino Diaspora	Redlining/ Litter/Heat Maps	Harms Connection to Climate Change	Harms Connection to Climate Change	Harms Connection to Climate Change	Take Action
Just Transition				Resistances	Resistances	Resistances	

The infographic serves to contextualize Climate Justice In Philadelphia



**CLIMATE JUSTICE INITIATIVE**

## Climate justice in Philadelphia

**What is Climate Justice?**  
Climate justice begins with understanding that climate change's effects are experienced inequitably. Marginalized communities face disproportionate impacts, and are least-responsible for climate pollution. Climate justice addresses the social, economic and health inequities experienced by underserved communities.

**A Framework for Just Transition**  
RESIST — RETHINK — RESTRUCTURE

### Lenapehoking In the Land of the Lenape

**All Our Relations:**  
Climate justice begins with understanding that climate change's effects are experienced inequitably. Marginalized communities face disproportionate impacts, and are least-responsible for climate pollution. Climate justice addresses the social, economic and health inequities experienced by underserved communities.

**Collaborators' Quotes about connection to land**

**Indigenous Diaspora**

### Ooquannock (Philadelphia Region)

**Collaborators' Quotes about connection to land**

### Land Circle

**Definition of community gardens: "outdoor and 'soil-based' for sale"**

**Maximum Three Dollars Medicinal Farm**

**Urban Farming**

**Connection to Climate Change**  
Drawing

### Land Circle

**Definition of community gardens: "outdoor and 'soil-based' for sale"**

**Maximum Three Dollars Medicinal Farm**

**Urban Farming**

**Connection to Climate Change**  
Drawing

### Trash Circle

**Definition of community gardens: "outdoor and 'soil-based' for sale"**

**Maximum Three Dollars Medicinal Farm**

**Urban Farming**

**Connection to Climate Change**  
Drawing

CCP + neighborhood info

Credits + Take Action



# Climate justice in Philadelphia

## What is Climate Justice?

Climate justice begins with understanding that climate change's effects are experienced inequitably. Marginalized communities face disproportionate impacts, and are least-responsible for climate pollution. Climate justice addresses the social, economic and health inequities experienced by underserved communities.

## A Framework for Just Transition

RESIST — RETHINK — RESTRUCTURE

