

# COVER LETTER

June 24, 2021

C. Beige Berryman, AICP  
Philadelphia Art Commission  
1515 Arch Street, 13th Floor  
Philadelphia, PA 19102

Re: Submission of Site Improvement Project at William H. Hunter School for Approval by the Philadelphia Art Commission

Dear Ms. Berryman,

I am pleased to submit the enclosed description for proposed site improvements for William H. Hunter School at 2400 N. Front Street, Philadelphia PA 19133 in the Kensington neighborhood of Philadelphia.

## Project Information

The William H. Hunter School was the recipient of a William Penn Foundation Grant for converting a concrete schoolyard into a high-quality, green outdoor playful learning space for the students of all ages and abilities. Improvements to William H. Hunter School's (Hunter) schoolyard are intended to create an accessible, inclusive, flexible, and immersive outdoor environment, weaving together play, learning, and recreation for all ages and abilities as indicated by student, school, and community surveys.

The concept for Hunter Schoolyard, developed by Mural Arts Restored Spaces Initiative (MARSI) in collaboration with students at Hunter School, is "A dream, a fantasy, a magical place!" MARSI engaged with the students virtually over Zoom to develop stories about play and learning, create drawings to correspond with their stories, and play a custom board-game to facilitate student input about the vision for a new schoolyard. From the game play, MARSI consolidated the results to guide where site improvements and specific types of programming could occur on the schoolyard.

In addition, literacy and learning goals (identified as the Six C's noted in the Playful Learning Initiative) were documented and prioritized throughout this process. Using the information and concept developed by MARSI, SALT DESIGN STUDIO (SALT) created a schematic site plan that incorporates the programs, play elements, and learning goals that the students prioritized. Taking into consideration the existing physical conditions of the schoolyard, and the disturbance restrictions, SALT designed a schoolyard inspired by a the concept of magical, fantastical places through the use of bright colors, sensory elements, and bold spatial expressions. Key Elements of the proposed schoolyard design include:

- **Main Entry Corridor** – provides clear circulation for students and visitors to the main building entrance. This circulation corridor will be anchored by two overhead shade sails to provide shade and emphasize key entry points, while strategically located bollards will help to separate this entry space from play and outdoor learning areas on either side. Colorful pavement paint will bring excitement to the existing concrete pavement.
- **Outdoor Classroom & Rain Garden** – to preserve two of the three existing canopy trees in the Schoolyard, a multi-purpose structure is proposed to make an Outdoor Classroom and incorporate the height of the existing raised plant beds. The Outdoor Classroom will be accessible via an ADA-compliant ramp and tiered

steps. Sloped artificial turf panels will provide soft surfaces to lay and play on. The Outdoor Classroom is intended to be used for small or large groups, performance, events and gathering, and general socialization and play. The area east of the Outdoor Classroom features at-grade sensory gardens, seating, and artificial turf to provide additional opportunities for play and learning. An expanded area at the north corner of the site will accommodate a rain garden to buffer street traffic, provide stormwater management for the Schoolyard, and offer educational opportunities.

- The **Active Play** area is an accessible and inclusive play space featuring a variety of play equipment for children of all ages and abilities. Multiple levels of play and unique sensory elements will accommodate children with varying physical and mental abilities. Two half-size basketball courts with colorful pavement paint will be located east of the main play space and can accommodate other sports and open play.
- **Urban Forest** - offers opportunities for nature-based play, outdoor learning and education, socialization, and quiet time. Canopy trees, understory trees, and ground-level planting will buffer views and noise from N. Howard Street and provide essential shade. Repurposed logs, stumps, and tree cookies from existing trees to be removed will be scattered throughout the planted area for exploration and creative play.

SALT's design proposes maintaining portions of the existing concrete pavement that is in good condition and strategically adding soft surfaces and green spaces to promote healthier ecosystems, create vital habitat, provide shade, and reduce the impact of the urban heat island effect. Bright colors will be introduced through the poured-in-place safety surfacing, site furnishings, and concrete pavement paint. We intend for the pavement treatments to be colorful, fun and attractive to bring life and excitement outdoors. Site amenities, such as benches, trash and recycling receptacles, signage, and bike racks are also proposed throughout the schoolyard.

SALT intends to continue to develop the design to promote the learning and literacy goals in an outdoor setting.

Our team is requesting administrative approval from the Philadelphia Art Commission to proceed with the project as shown.

For questions or comments, please contact me using the following information:

Katrina Rogus, RLA  
Project Manager / Landscape Architect  
SALT DESIGN STUDIO  
4100 Main Street, Suite 201  
Philadelphia, PA 19127  
E: [katrina@saltdesigns.com](mailto:katrina@saltdesigns.com)  
T: (215) 621-7600

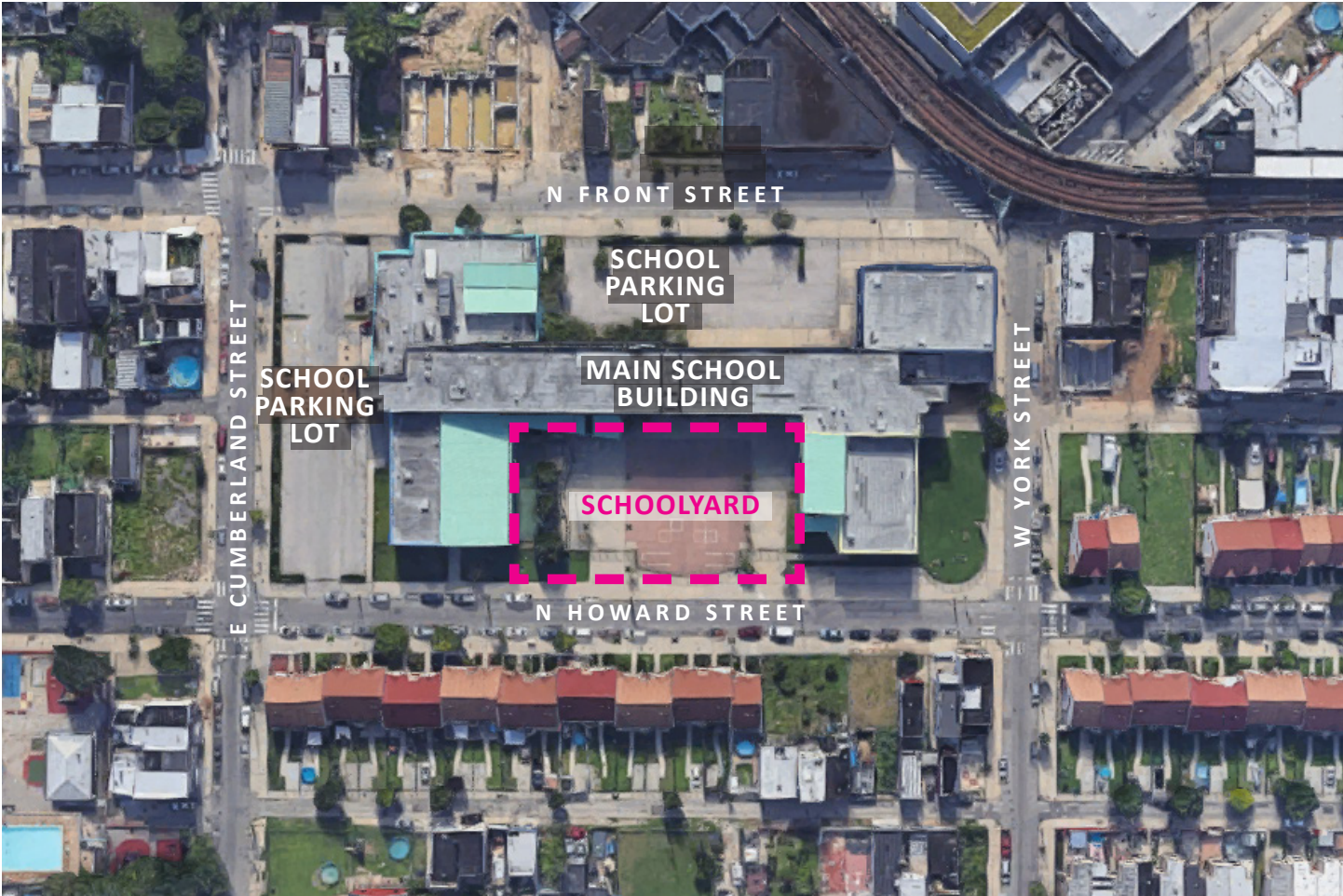
Sincerely,



Katrina Rogus, RLA



PHOTOGRAPHS



EXISTING AERIAL PHOTO

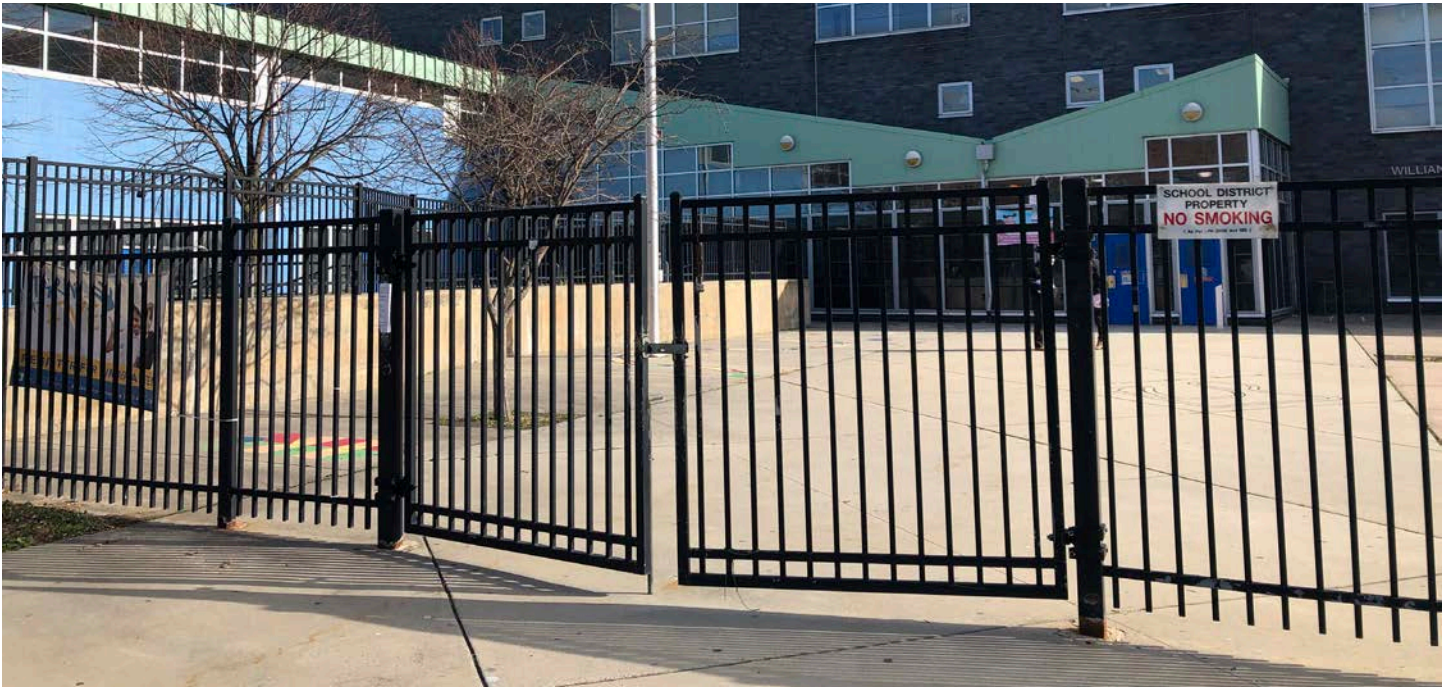


PHOTO 1: Existing Main Entrance;  
Location of Proposed Main Entry Corridor with Shade Sails and Bollards



# PHOTOGRAPHS



PHOTO 2: Existing Concrete Schoolyard;  
Location of Proposed Fixed Tables & Basketball / Sports Courts



PHOTO 3: Existing Concrete Schoolyard;  
Location of Proposed Active Play Area (center of schoolyard) &  
Soft Surface / Open Play Areas (closest to building)



# PHOTOGRAPHS



PHOTO 4: Existing Concrete Schoolyard;  
Location of Proposed Urban Forest



PHOTO 5: Existing Raised Planters & Concrete Steps to be Removed;  
Location of Proposed Outdoor Classroom Structure Preserving Two Existing Trees



# PHOTOGRAPHS

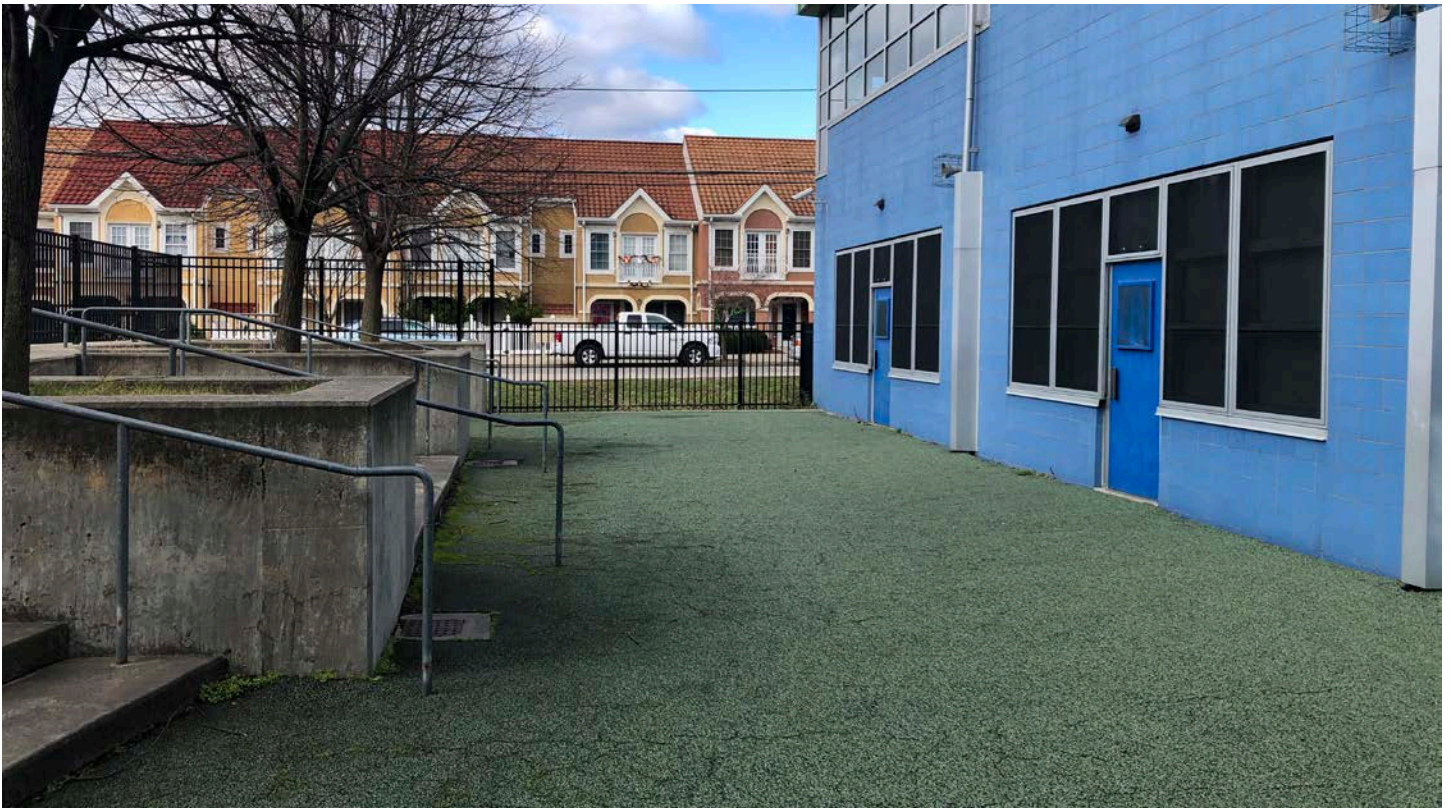


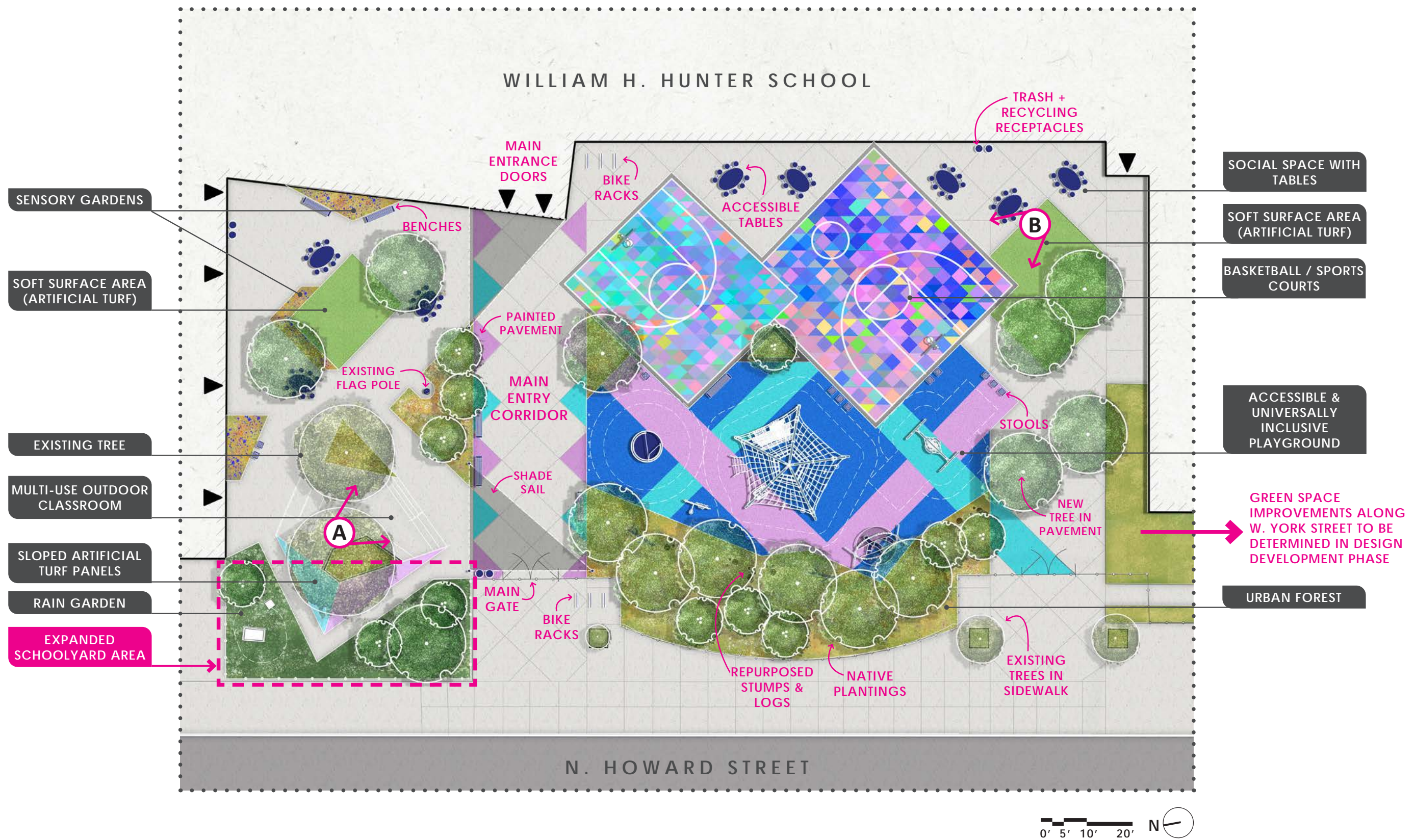
PHOTO 6: Existing Play Surface Area;  
Location of Proposed Sensory Gardens



PHOTO 7: Existing Grass Area;  
Location of Proposed Schoolyard Expansion & Rain Garden



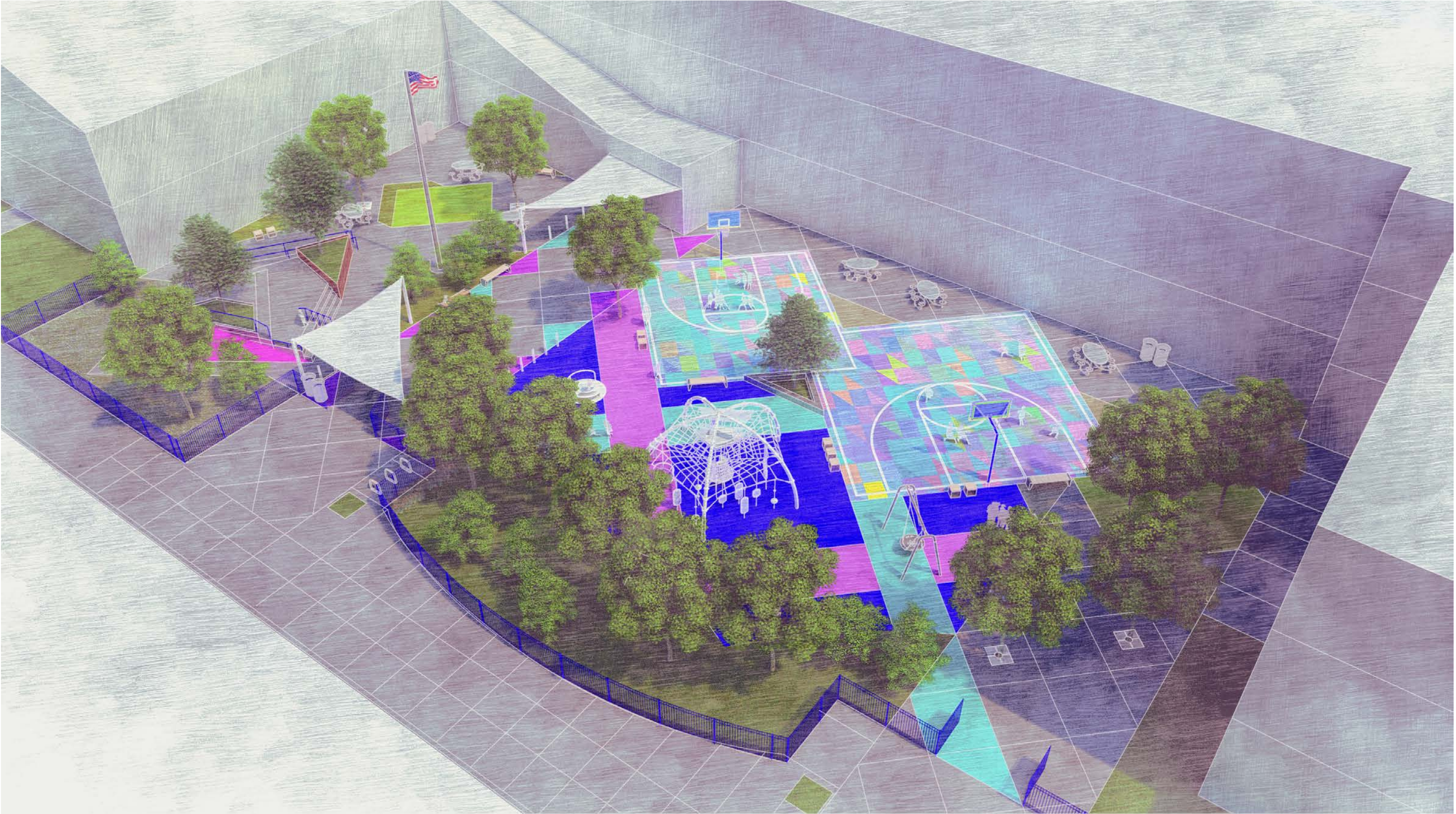
RENDERED SITE PLAN



SITE PLAN RENDERING: Presented at Community Meeting May 26, 2021

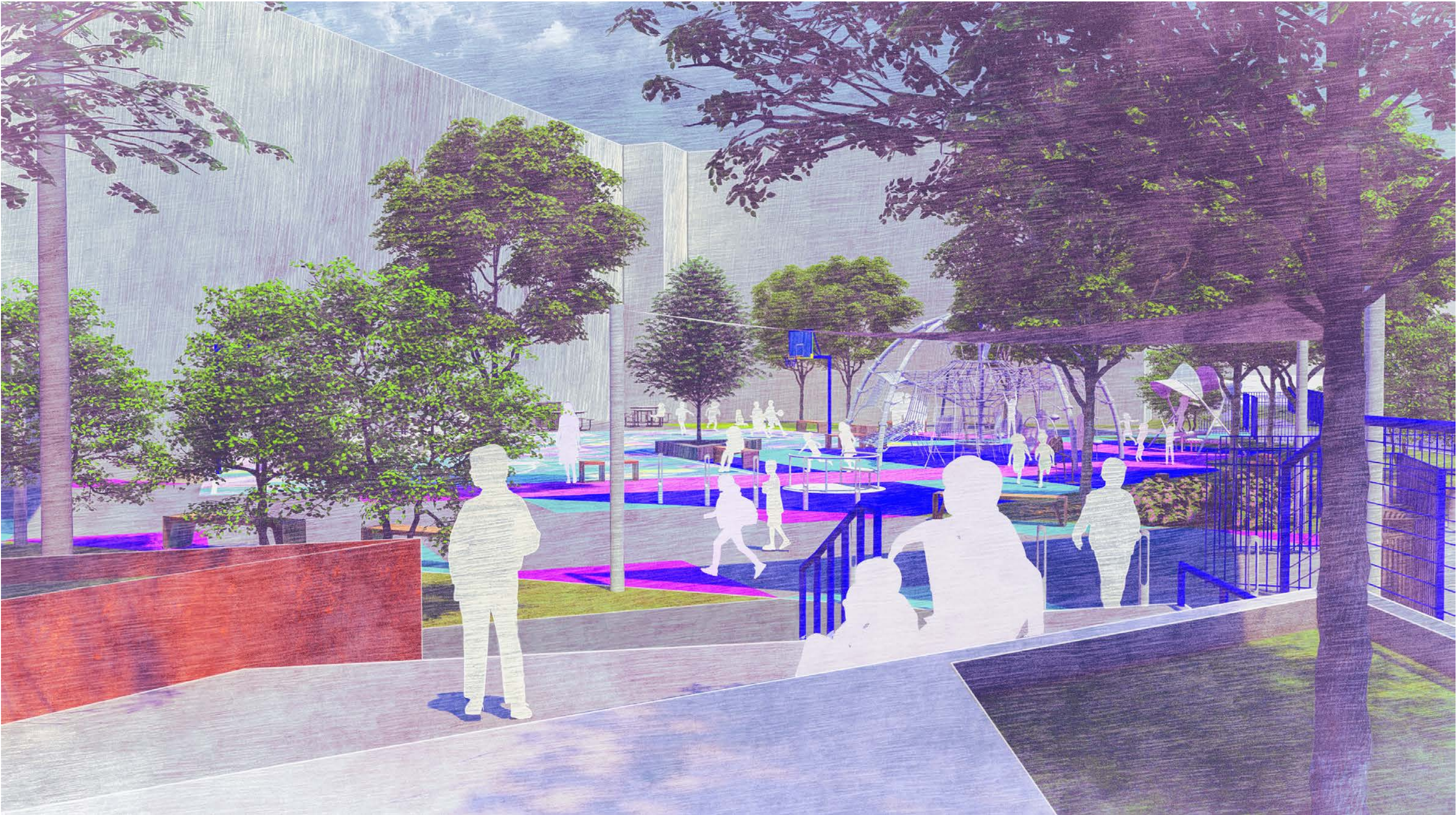


HUNTER SCHOOLYARD BIRDSEYE VIEW PERSPECTIVE





HUNTER SCHOOLYARD PERSPECTIVE RENDERING A



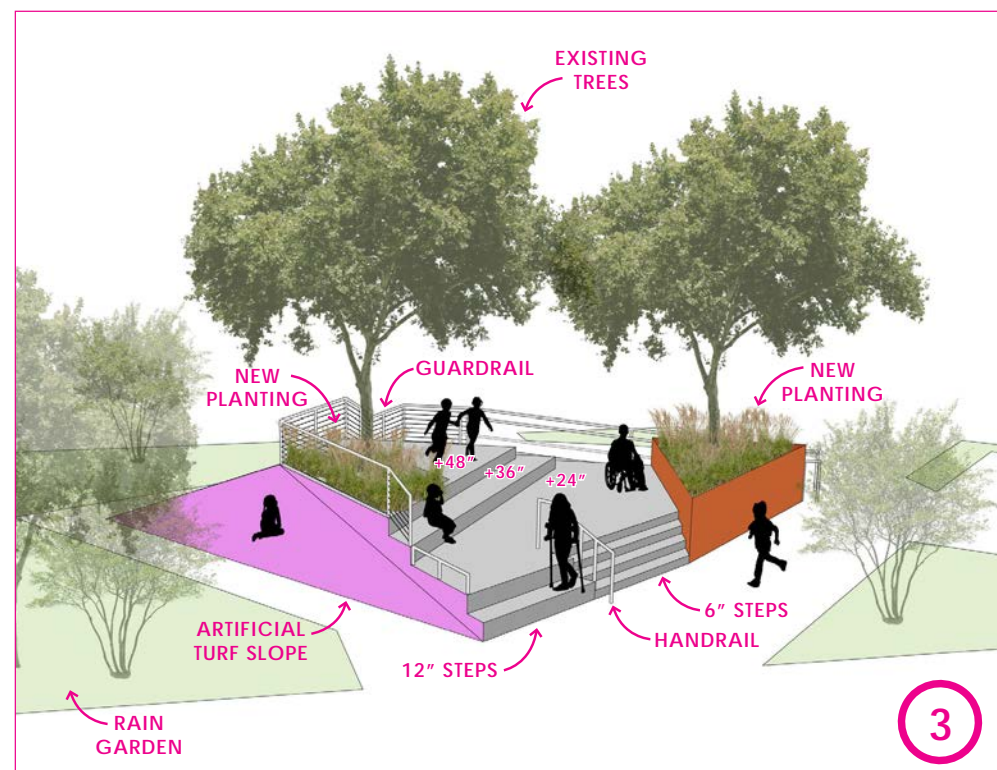
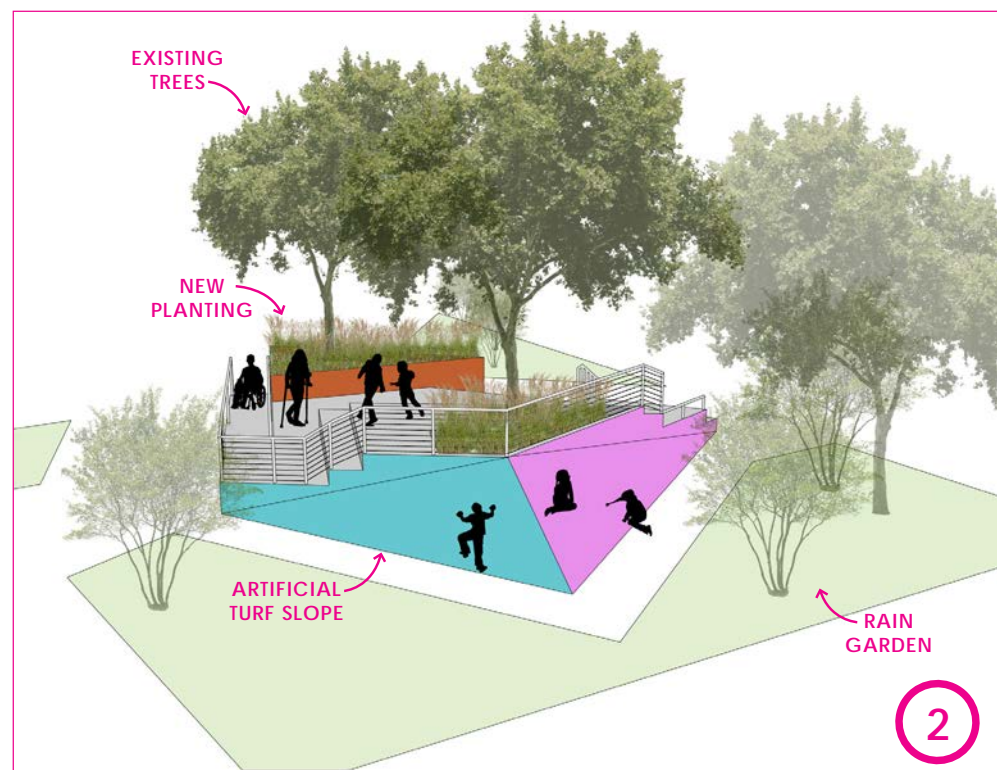
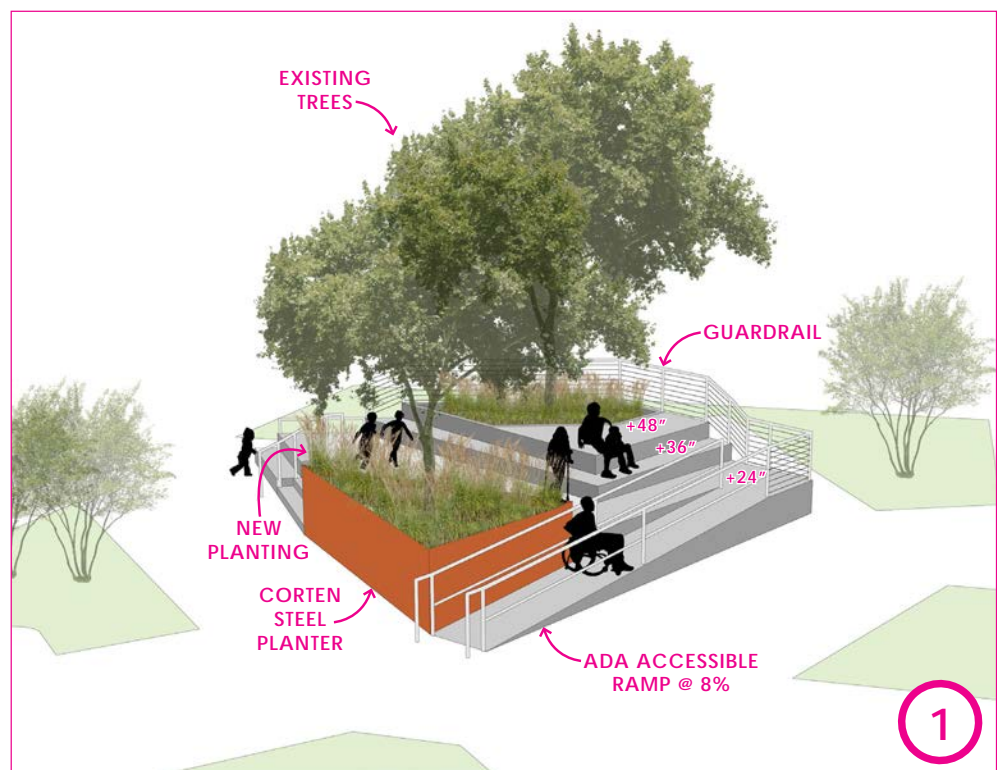
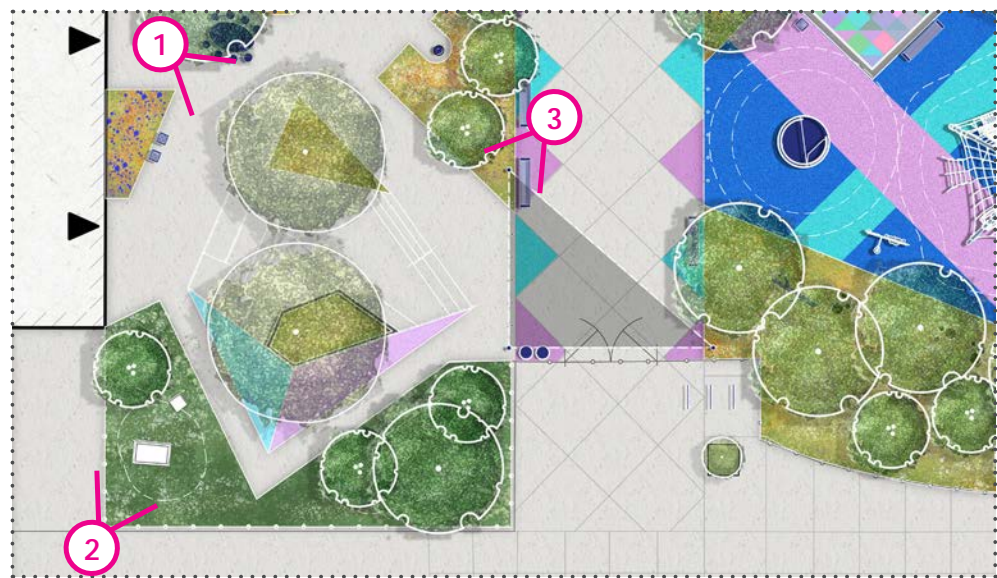


HUNTER SCHOOLYARD PERSPECTIVE RENDERING B





HUNTER SCHOOLYARD OUTDOOR CLASSROOM 3D STUDIES





SCHEMATIC DESIGN SITE PLAN

LEGEND:

PROJECT LIMITS

EXISTING BUILDING ENTRANCE

ASPHALT PAVEMENT

CONCRETE PAVEMENT

POURED-IN-PLACE RUBBER SAFETY SURFACE OVER AGGREGATE

LIMITS OF STRUCTURAL SOIL

PAVEMENT PAINT ON EXISTING CONCRETE PAVEMENT

ASTM PLAY EQUIPMENT ZONE

HANDRAIL

ORNAMENTAL FENCE

EXISTING PEDESTRIAN GATE

EXISTING FENCE

DRINKING FOUNTAIN / BOTTLE-FILLING STATION

FIXED TABLE

BENCH

STOOL

14' HT. CONCRETE SEAT WALL

BICYCLE RACKS

LITTER / RECYCLING RECEPTACLES

BOLLARDS

SUPPORT POST FOR SHADE SAIL

SHADE SAIL OVERHEAD

TREE GRATE

BASKETBALL HOOP

NATURE PLAY ELEMENTS (LOGS, STUMPS & TREE COOKIES)

PLANT BED

ARTIFICIAL TURF

RAIN GARDEN

CANOPY TREE PLANTING

UNDERSTORY TREE PLANTING

EXISTING TREE

GENERAL NOTES:

1.

SITE SURVEY DATA WAS PROVIDED BY RODRIGUEZ CONSULTING, LLC TO SALT DESIGN STUDIO ON MARCH 24, 2021.
2.

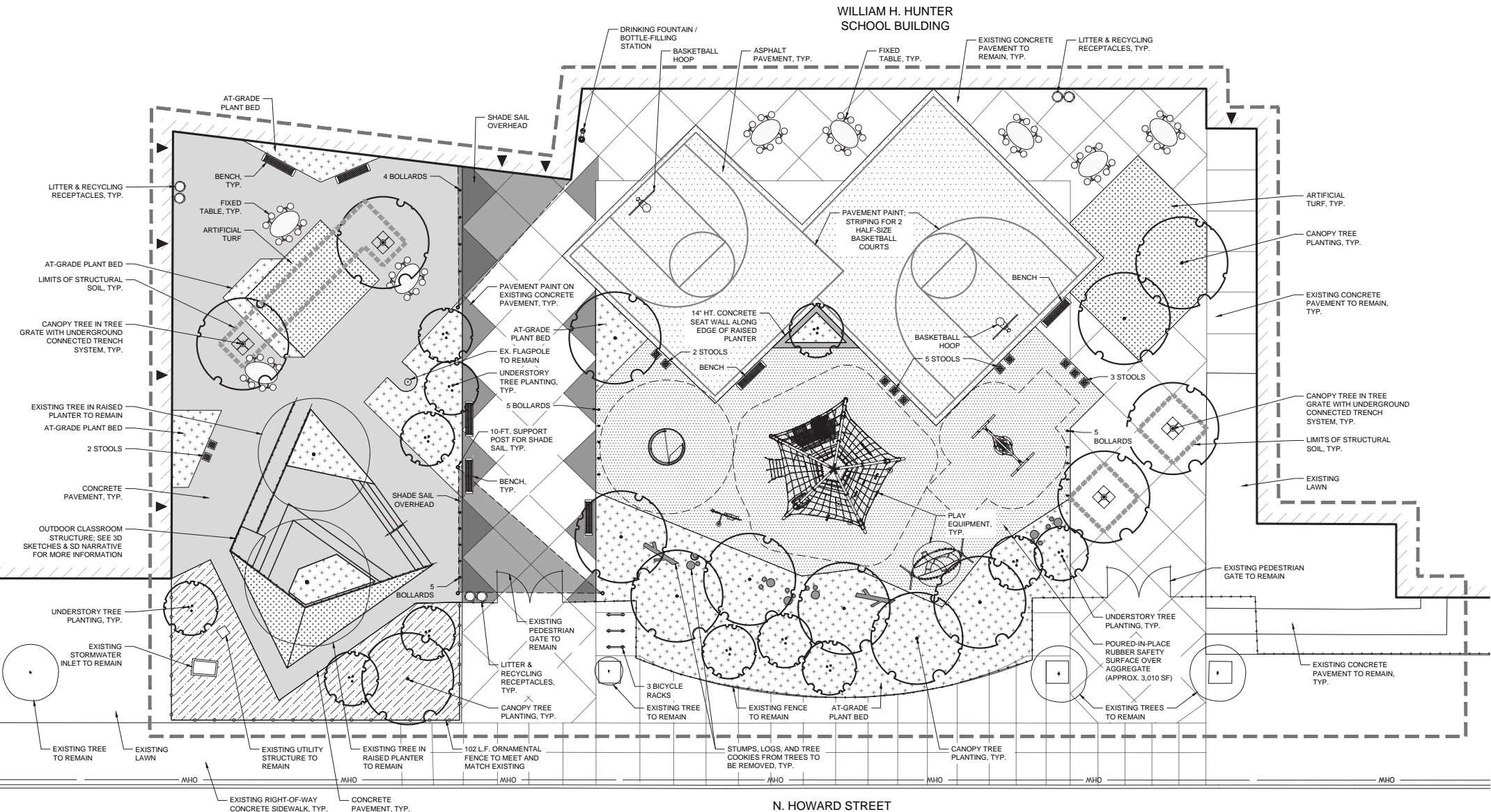
UNLESS OTHERWISE NOTED, EXISTING CONCRETE PAVEMENT TO REMAIN.
3.

EXACT MATERIALS, FURNISHINGS, AND PLAY EQUIPMENT TO BE SPECIFIED DURING FUTURE DESIGN DEVELOPMENT (DD) & CONSTRUCTION DOCUMENTATION (CD) PHASES. SEE SCHEMATIC DESIGN (SD) NARRATIVE FOR MORE INFORMATION.
4.

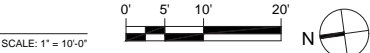
SITE LIGHTING TO BE PROVIDED ACROSS THE SITE. LOCATIONS AND SPECIFIC LIGHTS WILL BE DETERMINED DURING DD-CD PHASES. SEE SD NARRATIVE FOR MORE INFORMATION.
5.

PLANT MATERIAL SPECIES AND EXACT QUANTITIES TO BE SPECIFIED DURING DD-CD PHASES. SEE SD NARRATIVE FOR MORE INFORMATION.
6.

CURRENT PLAN ESTIMATES APPROXIMATELY 14,700 SF OF DISTURBANCE.



1 SCHEMATIC SITE PLAN



CLIENT:  
THE SCHOOL DISTRICT OF  
PHILADELPHIA  
440 N. BROAD STREET  
SUITE 371  
PHILADELPHIA, PA 19130  
www.philasd.org

PROJECT NAME & ADDRESS:  
**WILLIAM H. HUNTER SCHOOL -  
SCHOOLYARD  
IMPROVEMENTS**

2400 N. FRONT ST.  
PHILADELPHIA, PA 19133

SDP CONTRACT NUMBER:  
1474 / F20

PRIME CONSULTANT (LANDSCAPE ARCHITECT):  
**SALT**  
DESIGN STUDIO  
LANDSCAPE ARCHITECTURE  
PLANNING & URBAN DESIGN  
4100 MAIN STREET  
SUITE 201  
PHILADELPHIA, PA 19127  
T: (215) 621-7600  
www.saltdesignstudio.com

CIVIL ENGINEER:  
**rodriguez**  
ENGINEERS • SURVEYORS • GIS  
100 W. OXFORD STREET  
SUITE E-3100  
PHILADELPHIA, PA 19122  
T: (215) 987-1931  
www.rodriguez.biz

PROJECT PHASE:  
SCHEMATIC  
DESIGN

SEAL  
DRAFT - NOT FOR  
CONSTRUCTION

SITE PLAN

REV	DATE	DESCRIPTION

SCALE:  
AS NOTED

DATE:  
06/16/2021

DRAWN BY: KR / PVB  
CHECKED BY: SPS

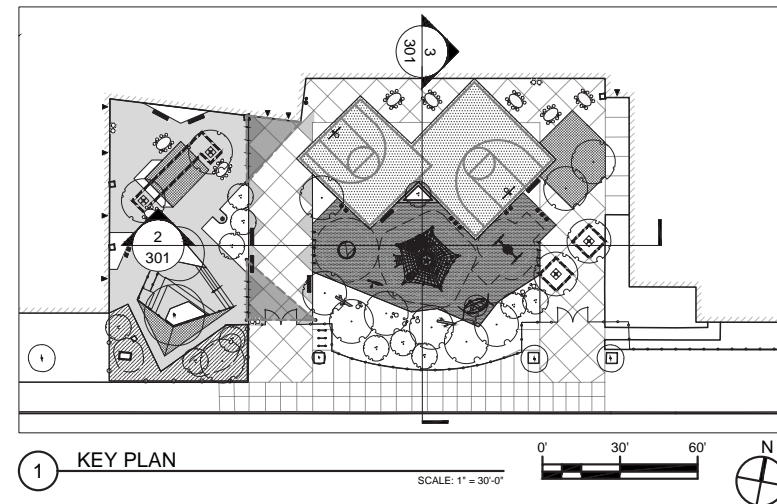
SHEET NUMBER:

L-101

SALT DESIGN STUDIO FILE NO.:  
2102



## SCHEMATIC DESIGN SITE SECTIONS



**IMPORTANT NOTE :**  
SECTIONS ARE FOR REFERENCE ONLY TO  
SHOW RELATIVE RELATIONSHIPS FOR SITE  
IMPROVEMENTS AND NOT FOR CONSTRUCTION.

CLIENT:

 THE SCHOOL DISTRICT OF  
PHILADELPHIA

440 N. BROAD STREET  
SUITE 371  
PHILADELPHIA, PA 19130  
[www.philasd.org](http://www.philasd.org)

**PROJECT NAME & ADDRESS:**  
**WILLIAM H.  
HUNTER SCHOOL -  
SCHOOLYARD  
IMPROVEMENTS**

2400 N. FRONT ST.  
PHILADELPHIA, PA 19133

SDP CONTRACT NUMBER:  
**1474 / F20**

PRIME CONSULTANT / LANDSCAPE ARCHITECT:

**SALT**  
DESIGN STUDIO  
LANDSCAPE ARCHITECTURE  
PLANNING & URBAN DESIGN

4100 MAIN STREET  
SUITE 201  
PHILADELPHIA, PA 19127  
T: (215) 621-7600  
[www.saltdesignstudio.com](http://www.saltdesignstudio.com)

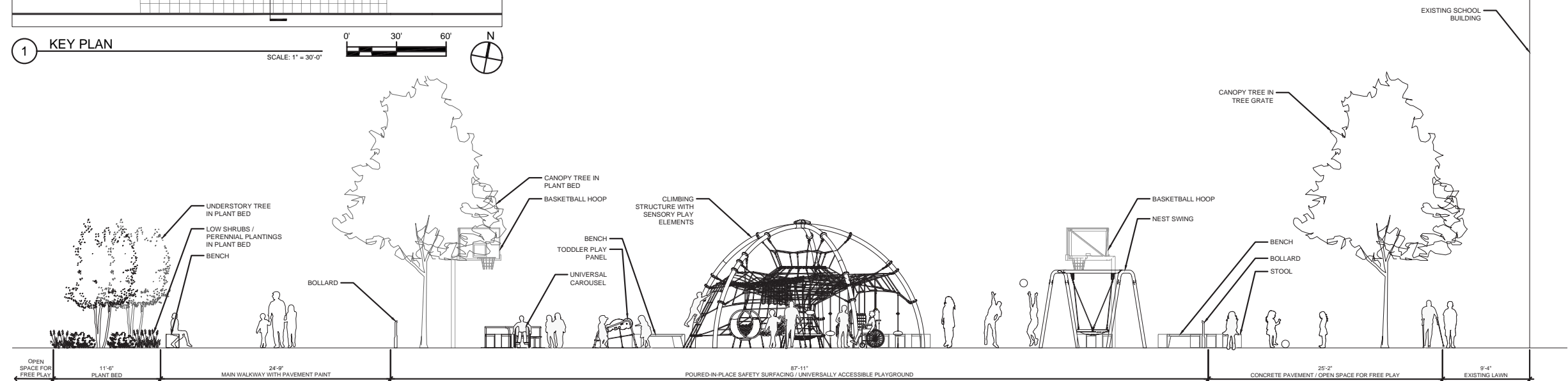
CIVIL ENGINEER:



100 W. OXFORD STREET  
SUITE E-3100  
PHILADELPHIA, PA 19122  
T: (215) 987-1931  
[www.rodriquez.biz](http://www.rodriquez.biz)

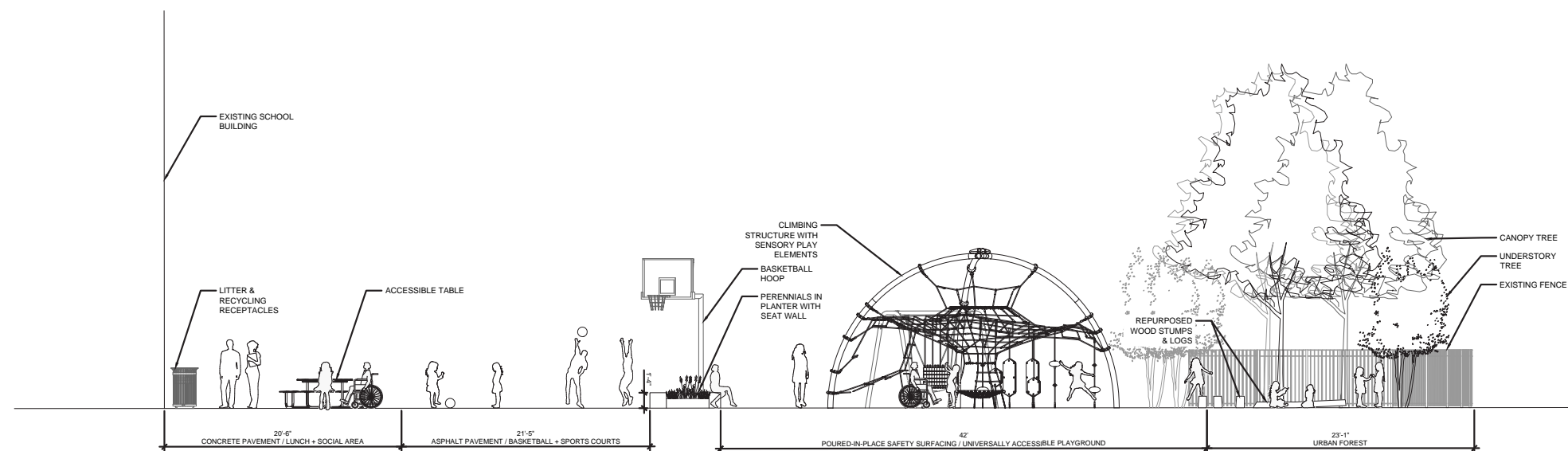
PROJECT PHASE:

## SCHEMATIC DESIGN



2 EAST-WEST SECTION LOOKING NORTH

SCALE: 3/16" = 1'-0"



3 NORTH-SOUTH SECTION LOOKING EAST

SCALE: 3/16" = 1'-0"

SEAL:

DRAFT - NOT FOR CONSTRUCTION

SHEET TITLE:

## SITE SECTIONS

REV	DATE	DESCRIPTION

SCALE:

AS NOTED

DATE:	DRAWN BY: KR / PVB
08/16/2021	

SHEET NUMBER

**L301**

SALT DESIGN STUDIO FILE NO.:

2102



# PROJECT BUDGET

## PROJECTED CONSTRUCTION COSTS

Provided by Becker & Frondorf, project Cost Estimators

Demolition	\$ 41,450
Hardscape	\$ 132,920
Play Equipment	\$ 150,000
Outdoor Classroom	\$ 97,900
Site Accessories	\$ 128,530
Landscaping	\$ 152,070
Striping, Painting, and Graphics	\$ 5,630

Subtotal	\$ 708,500
----------	------------

General Conditions / OH&P (20%)	\$ 141,700
Bond (3%)	\$ 21,255
Contingency (15%)	\$ 106,275
Escalation (4% per year)	\$ 28,340

<b>Total</b>	<b>\$1,006,070</b>
--------------	--------------------

## FUNDING SOURCES

William Penn Foundation	\$ 801,500
-------------------------	------------