



Mantua Neighborhood Traffic Safety Project

Improving traffic safety on your neighborhood streets



Jointly led by Managing Director's Office of Transportation, Infrastructure, & Sustainability (OTIS) and Department of Streets

VISIONZEROPHL.COM

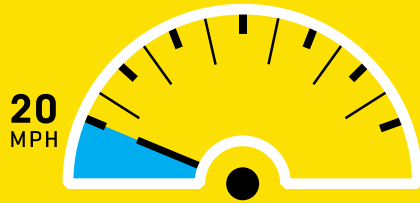
|

#VISIONZEROPHL

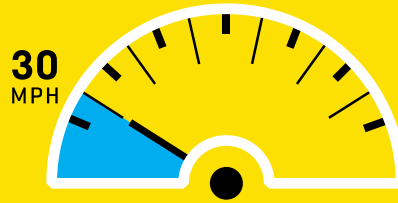
Agenda:

1. What is Vision Zero?
2. Traffic Safety and safe travel in Mantua
3. What we've heard
4. Safety Toolbox
5. Next Steps
6. Survey

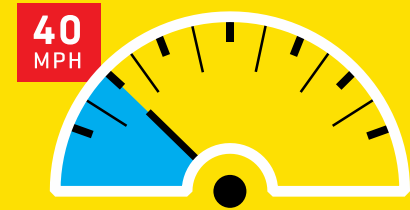
WHEN A PERSON IS HIT BY A DRIVER AT...



1 OUT OF **10** DIE



5 OUT OF **10** DIE



9 OUT OF **10** DIE

Slowing down saves lives.

Why Vision Zero in Philadelphia?

Every year, there are nearly 10,000 reported crashes on Philadelphia streets.

85 PEOPLE EVERY YEAR



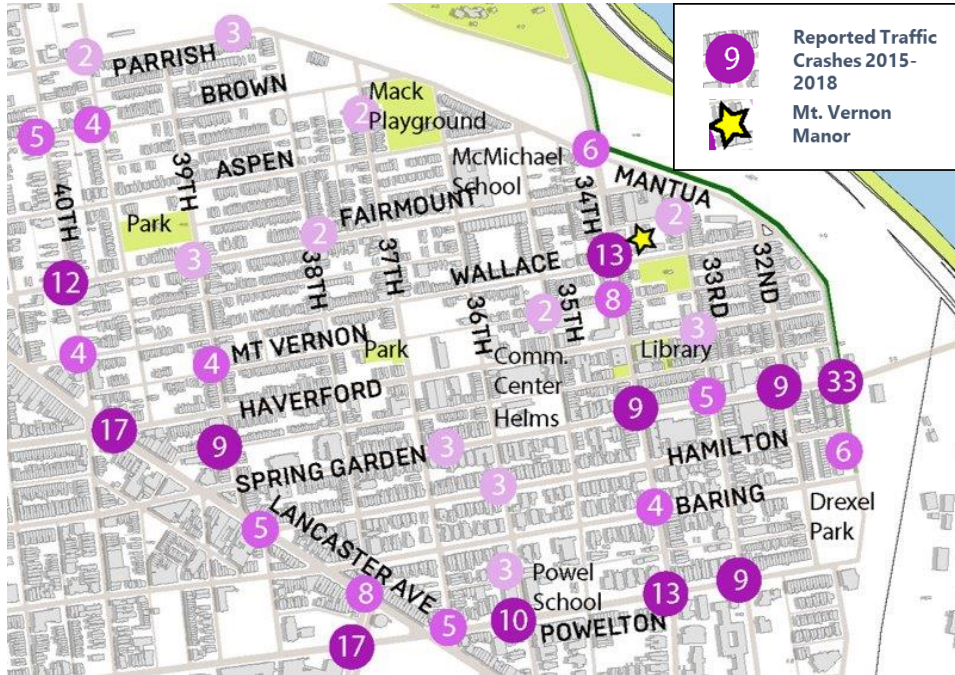
Approximately 85 people are killed each year in traffic crashes.

5 CHILDREN EVERY DAY



5 children every day are reported to be involved in traffic crashes.

Mantua Traffic Safety

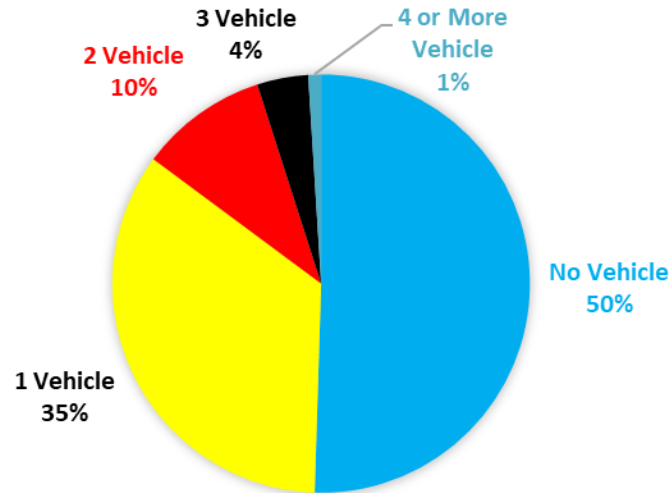


- **Mantua Traffic Safety boundaries:**
 - 40th Street
 - Parrish Street
 - Mantua
 - Lancaster
 - Powelton

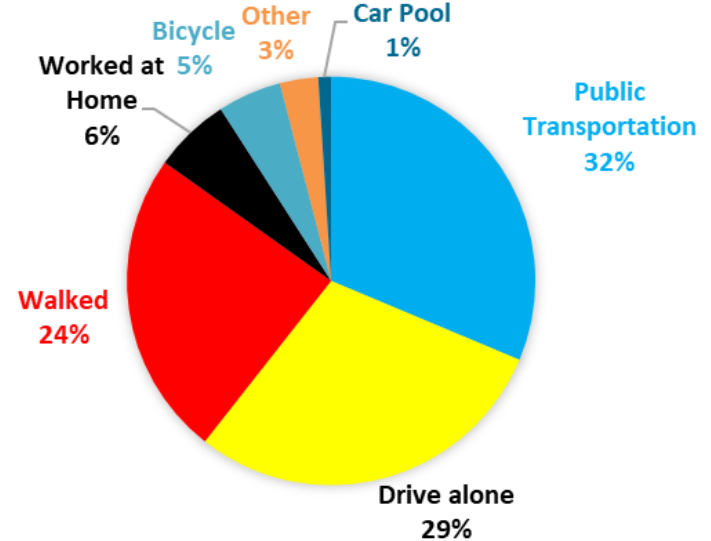
How people travel in Mantua

60% of the working population of Mantua rely on walking, biking, or public transportation to go to work

VEHICLES PER HOUSEHOLD IN MANTUA



HOW PEOPLE IN MANTUA GET TO WORK



What we've heard

From the public meeting on 10/17/2020 as well as smaller conversations, we've heard:

- **There are serious public concern on traffic safety in the neighborhood**
- 34th Street is the most dangerous facility in the neighborhood. Bike lane markings faded.
- 34 & Wallace in particular seems dangerous.
- 34 Street is barrier for people who walk.
- 34 & Spring Garden and 31 & Spring Garden is a congestion and safety issue.
- 34 Street and Spring Garden have a high number of wrong way drivers
- 34 north of Mantua Ave is very fast and drivers don't slow down in the neighborhood.
- Tensions over development, parking, and student housing.



Solutions discussed

What we've heard so far:

- Speed cushions on 34th St and on Wallace
- Planters and creating separated pedestrian plazas near some intersections
- A “Road Diet” on 34th St got mixed support-- some people were willing to make the tradeoff if it meant slowing down traffic, others were not.
- There were requests for Red Light Enforcement Cameras at:
 - 34 & Haverford
 - 34 & Spring Garden
- Request for turn arrows for the signal at 31 & Spring Garden

Take the Survey - TELL US WHAT YOU'D LIKE TO SEE

Traffic Safety Toolbox

Signal timing



Flex posts



Paint



Speed Cushions



Plazas*



Planters*



Bike Lanes



Road diet



***needs maintenance partners**

Next Steps



Take the Survey - TELL US WHAT YOU'D LIKE TO SEE



**VISION
ZERO**

CITY OF PHILADELPHIA

**OUR CITY AND OUR
FAMILIES DESERVE
SAFER STREETS.**

Zero traffic deaths by 2030.

VISIONZEROPHL.COM

|

#VISIONZEROPHL



Thank you!

SURVEY LINK

email: otis@phila.gov