

CITY OF PHILADELPHIA

otis

MOVING PHILADELPHIA

STATE ROAD REPAVING & SAFETY PROJECT
EAST TORRESDALE CIVIC ASSOCIATION MEETING
JANUARY 13, 2020



City of
Philadelphia



AGENDA

- Safety Data & Upcoming Paving
- What the road looks like today
- What we've heard to date
- Proposal for Safety Improvements





WHAT IS VISION ZERO?

- A policy that states clearly that traffic deaths are preventable and unacceptable.
- CORE PRINCIPLES:
 - Human life takes priority over mobility;
 - Human error is inevitable and unpredictable;
 - People are inherently vulnerable and speed is a fundamental predictor of crash survival;
 - Safe design behaviors, education, and enforcement are essential contributors to a safe system.

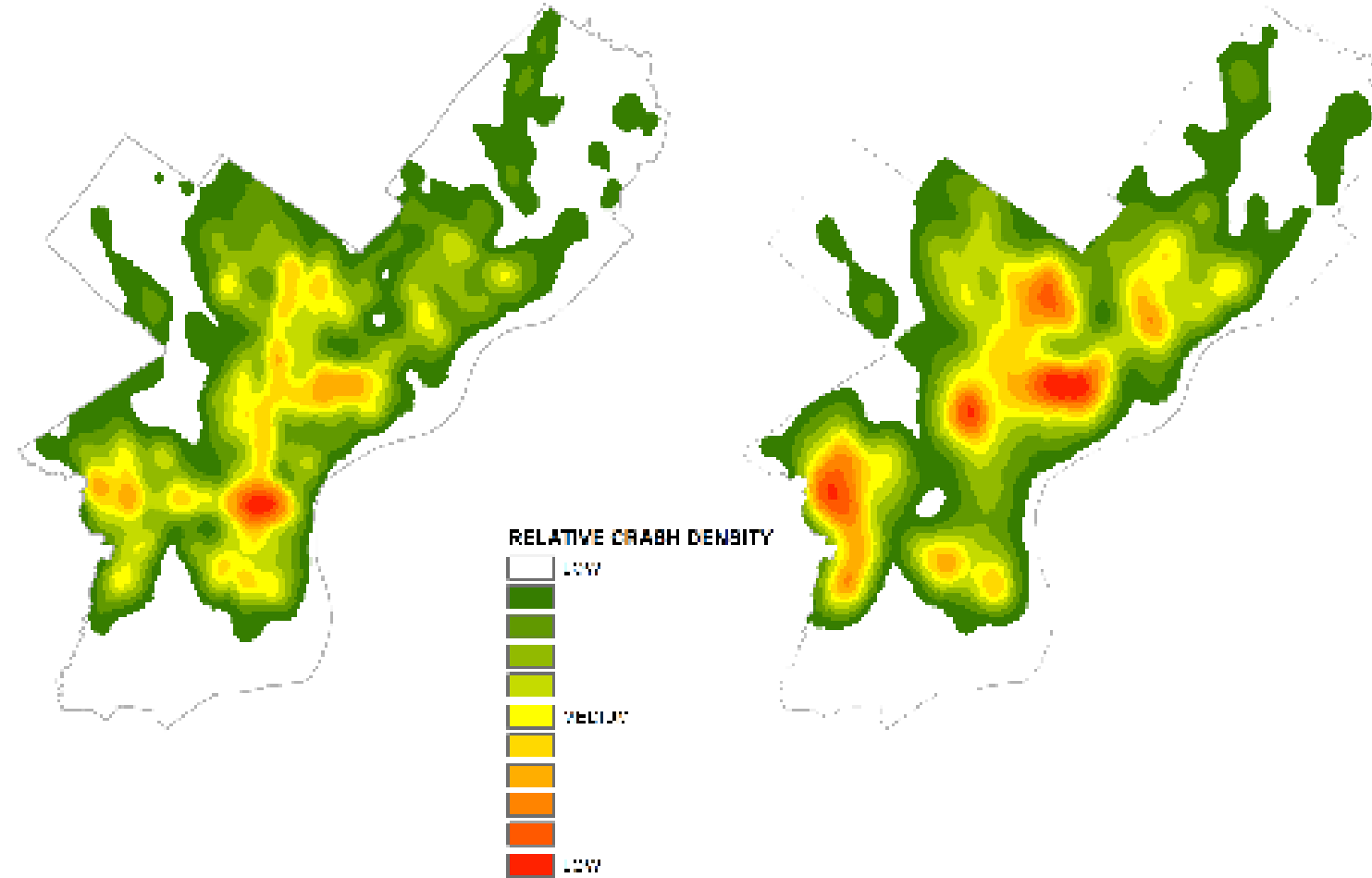




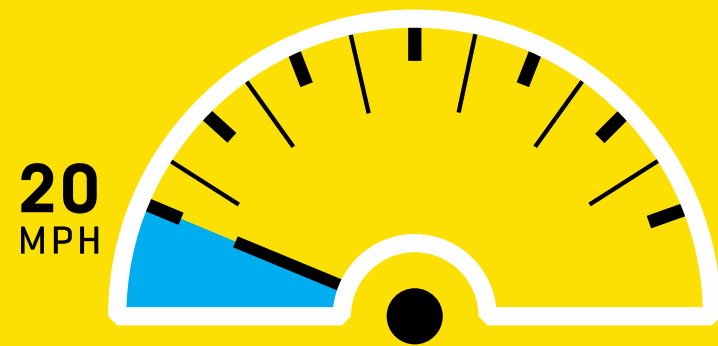
WHY IS VISION ZERO IMPORTANT IN PHILADELPHIA?

- Traffic crashes do not impact Philadelphians the same.

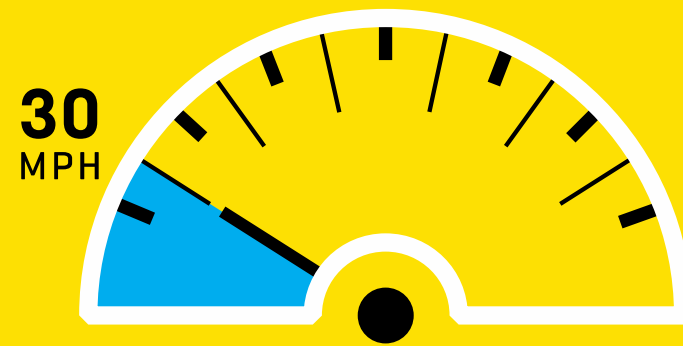
Pedestrian crashes (>18years) Pedestrian crashes (<18years)



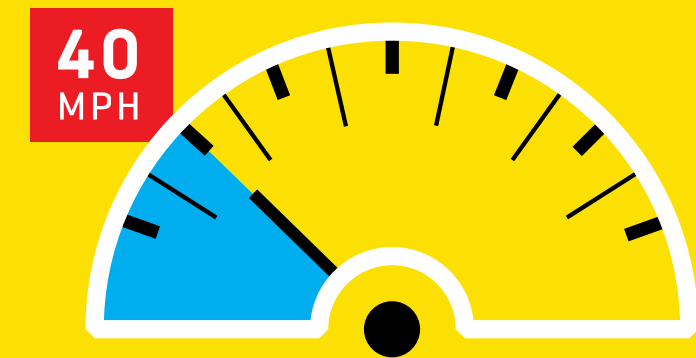
WHEN A PERSON IS HIT BY A DRIVER AT...



1 OUT OF **10** DIE



5 OUT OF **10** DIE



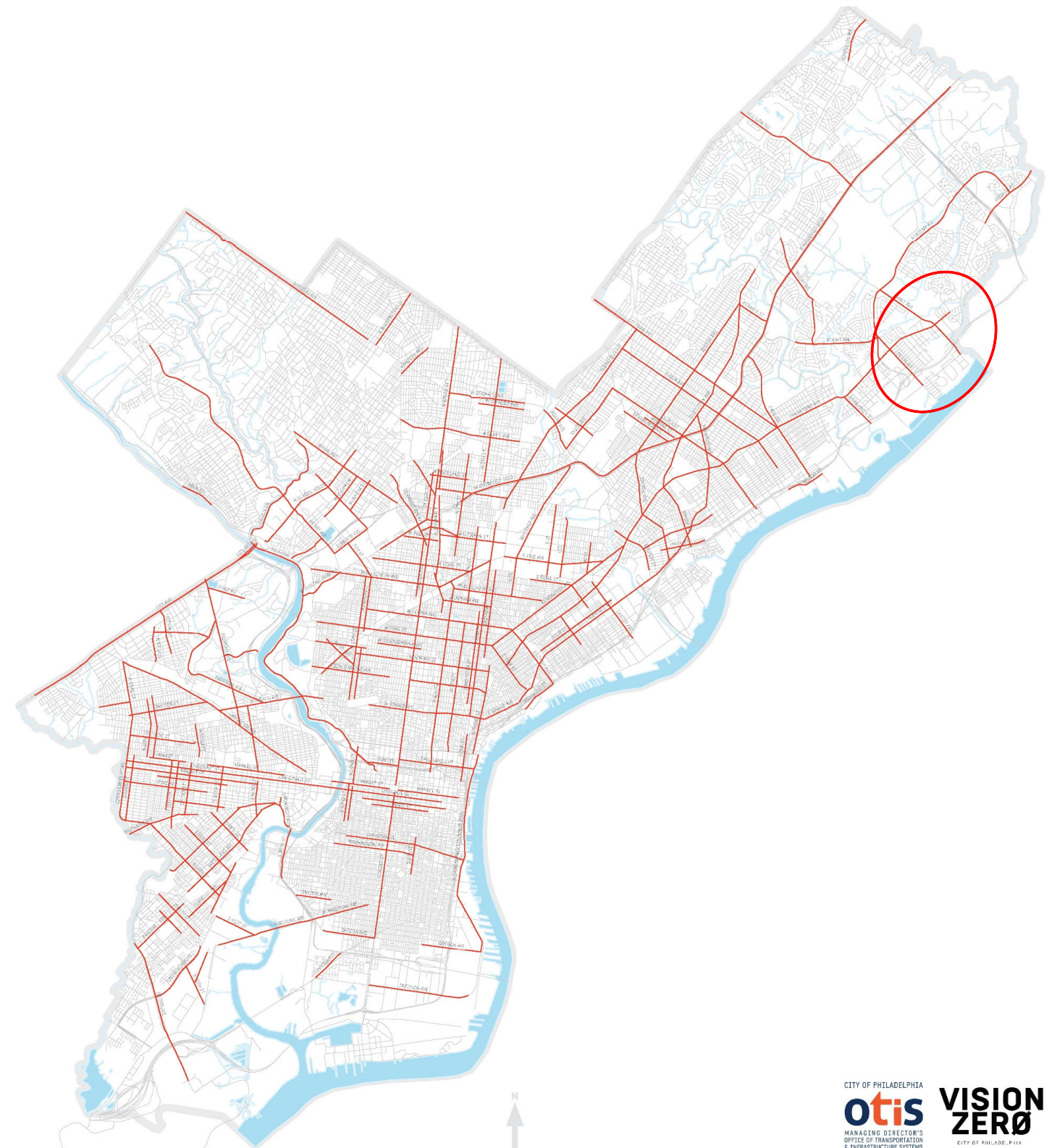
9 OUT OF **10** DIE

Slowing down saves lives.



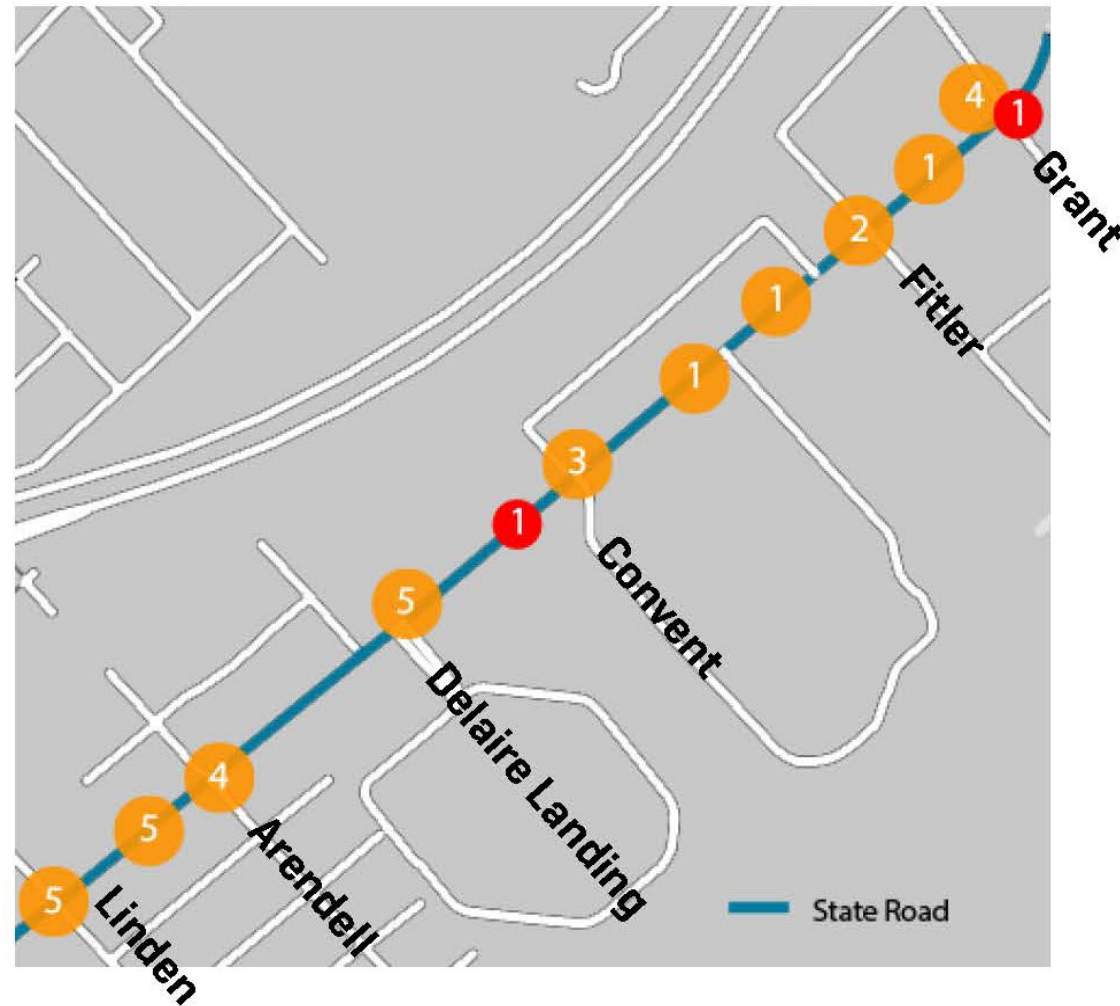
HIGH INJURY NETWORK

- 50% of Killed/Serious Injury Crashes on 12% of Streets
- Many High Injury Network intersections Adjacent or Nearby:
 - State & Grant
 - State & Linden
 - State & Ashburner





STATE ROAD: LINDEN - GRANT



CRASHES ON STATE ROAD

On State Road between 2014 to 2018, there were **48 reported crashes**.

32 PEOPLE INJURED



in traffic crashes on State Road since 2014.

1 PERSON KILLED



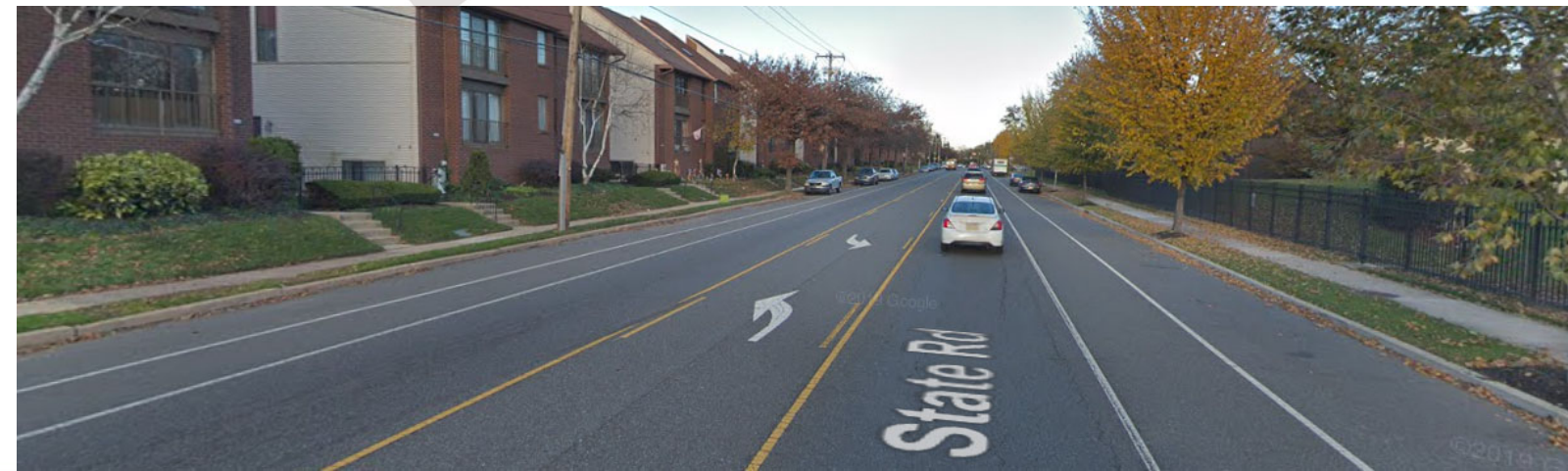
in traffic crashes on State Road since 2014.





NEIGHBOR FEEDBACK TO DATE

- Neighbor Observations
 - Drivers go very fast
 - It's not comfortable to bike on State Road
 - Driving is the dominant way to get around
- Common Desires
 - Safety for all roadway users
 - Slow down cars in residential area
 - Maintain parking on-street





TOOLBOX: PAVING AND MARKINGS

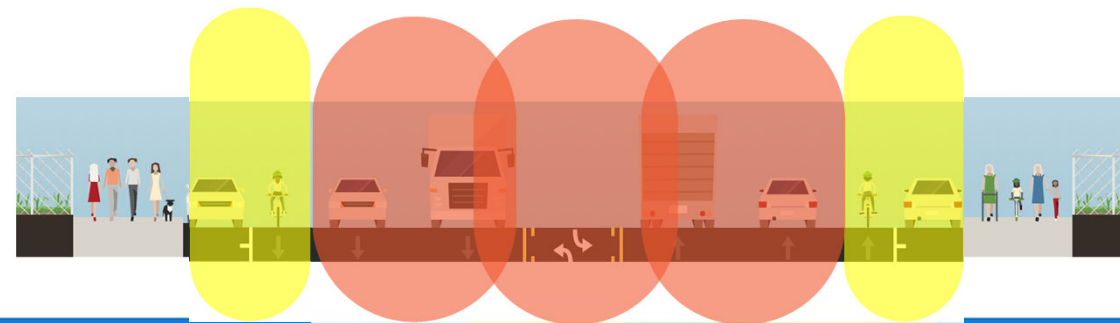
Change the street layout



New lane lines and crosswalks



Painted areas to channelize





TOOLBOX: TRAFFIC CONTROL

Pedestrian crossing signals



Left turn control & vertical posts





STATE ROAD IS IMPORTANT

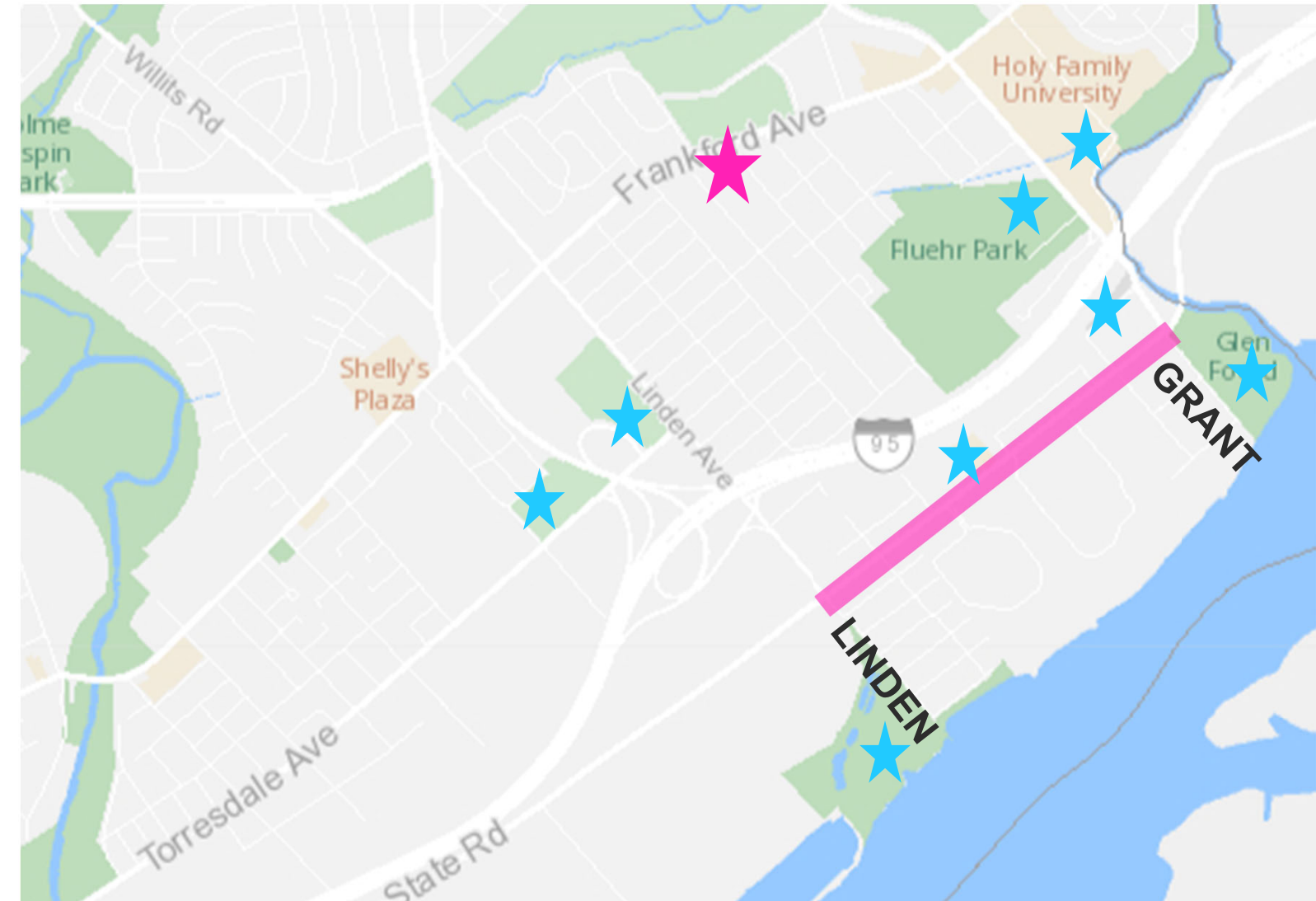
- Neighborhood area on otherwise fast road





STATE ROAD IS IMPORTANT

- Neighborhood link on otherwise fast road
- Close parks, train station, and other destinations





STATE ROAD IS IMPORTANT

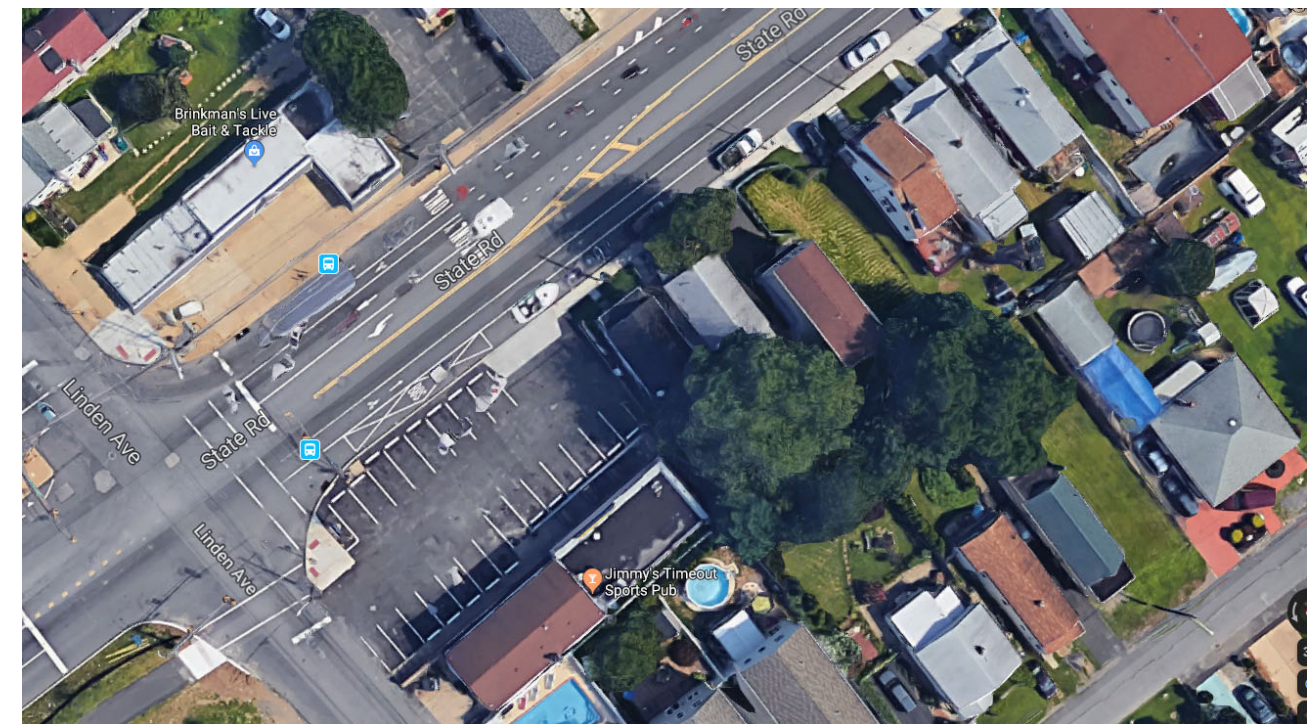
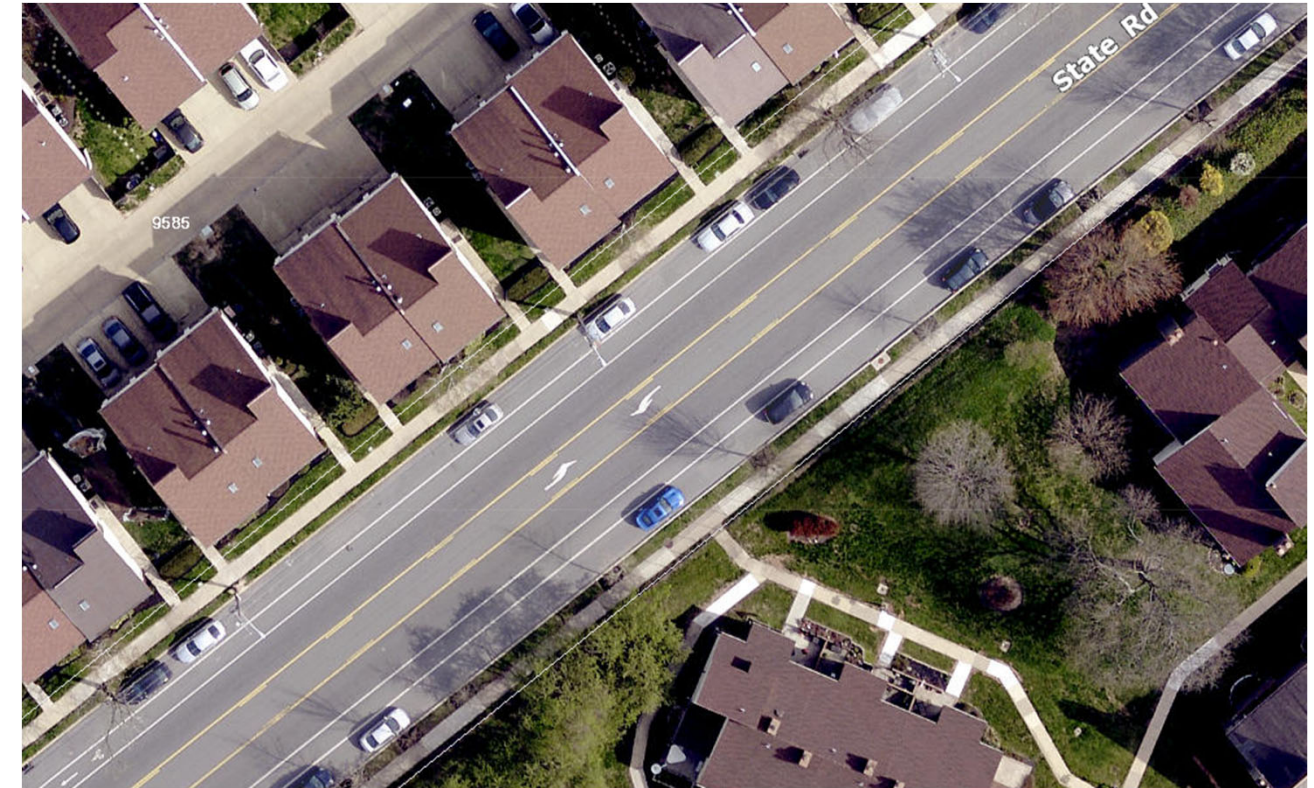
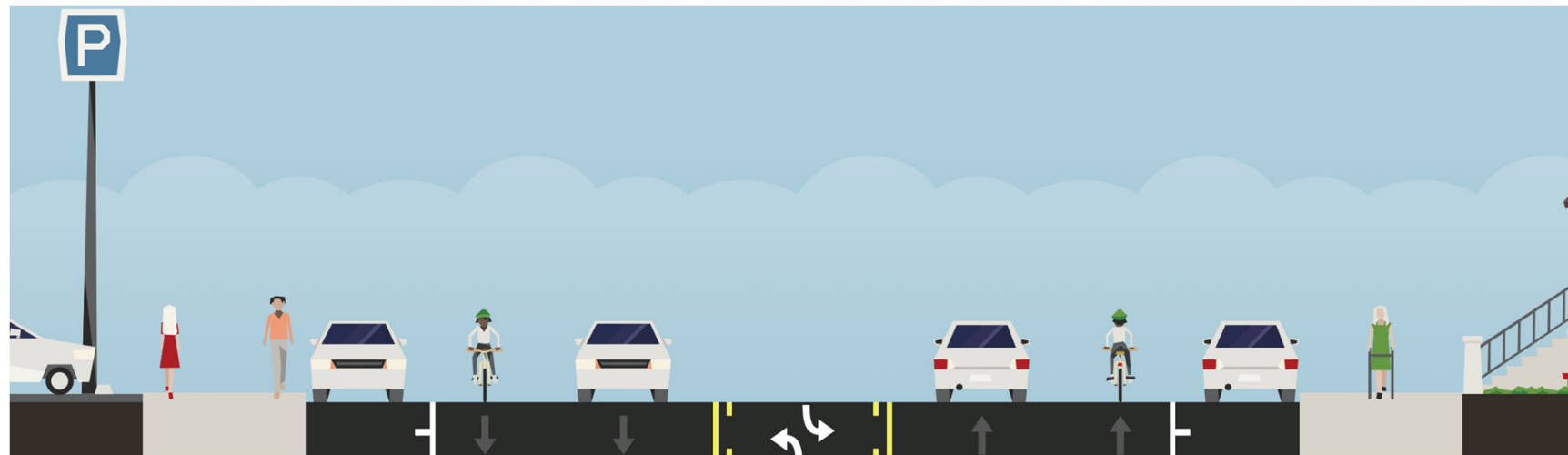




LINDEN - GRANT

Existing Conditions

- Bike lanes on each side
- Parking lane on each side
- One vehicle lane in each direction
- Parking lane not fully used in some sections



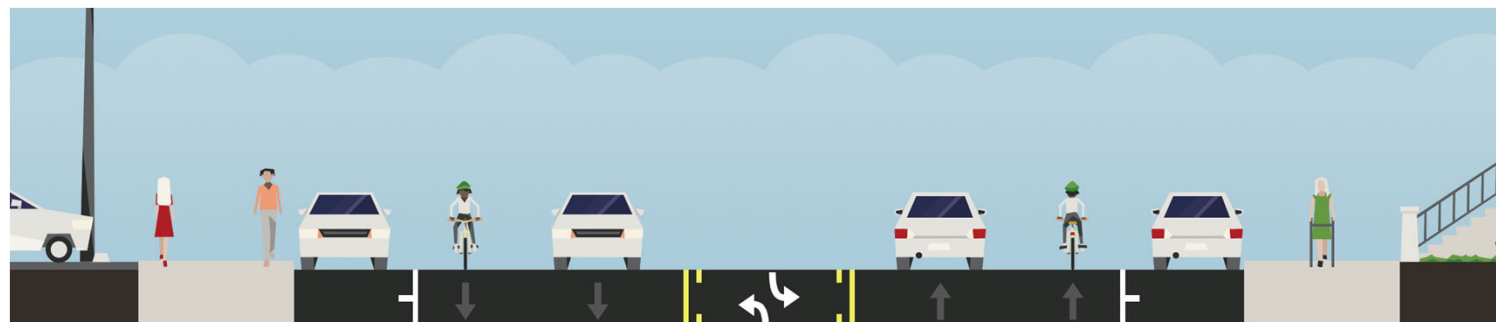


LINDEN - GRANT

Proposed Conditions

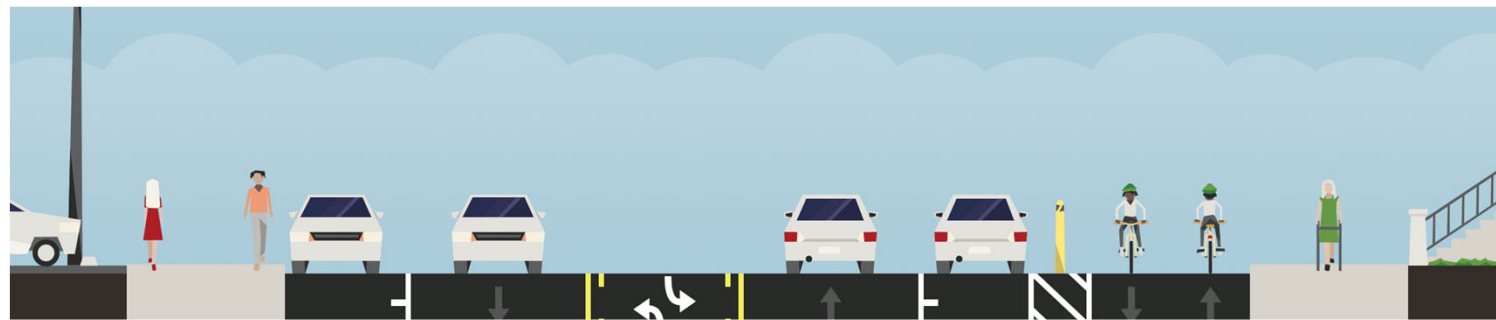
- Move south-bound bicycle lane to the E side of the street
- Add two-way protected bikeway on E side of street

Today



- Parking
- Bike
- Vehicle
- Bike
- Parking

Proposed



- Parking
- Vehicle
- Parking
- Bike





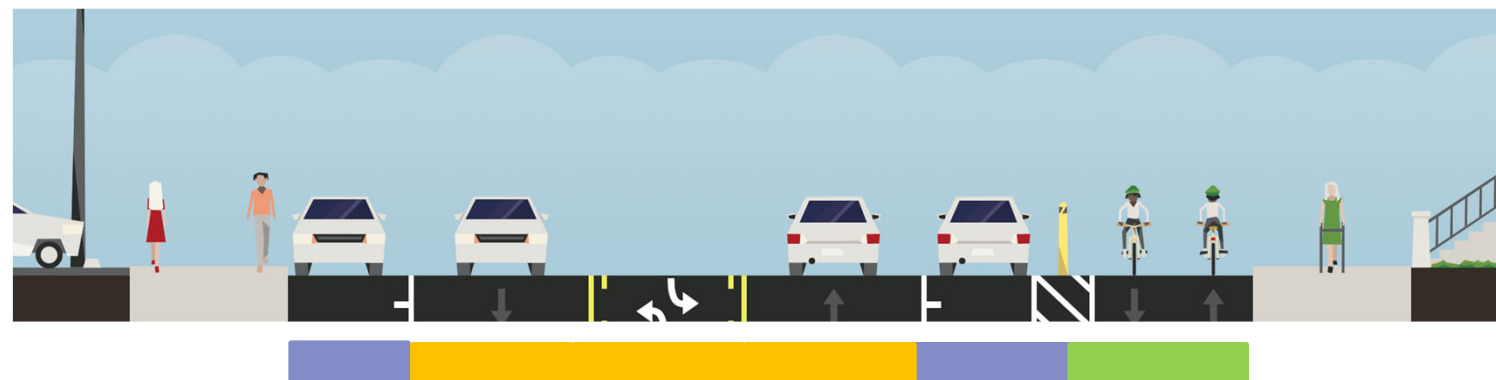
LINDEN - GRANT

Proposed Conditions

- Remove south-bound bicycle lane
- Add two-way protected bikeway on E side of Street



Proposed



- Parking
- Vehicle
- Parking
- Bike

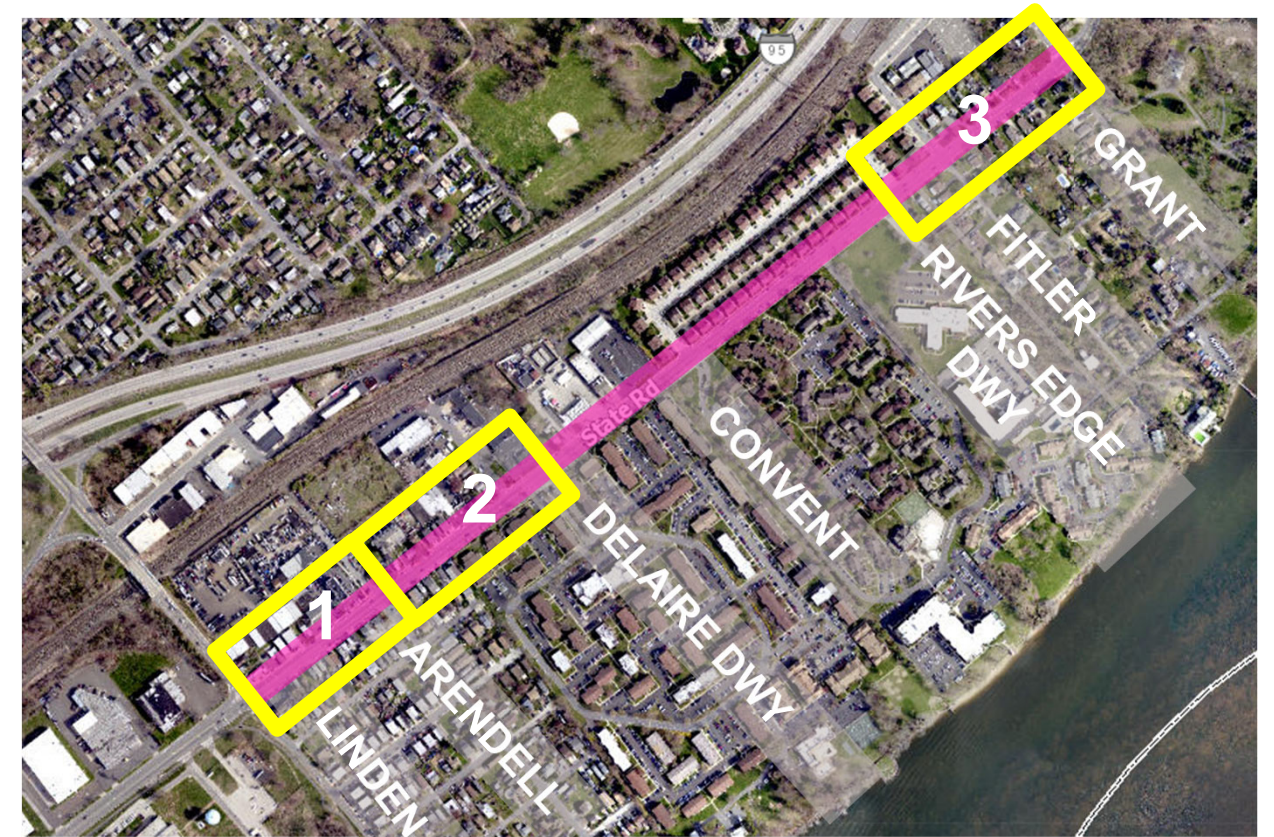




TRADE OFF: SOME PARKING LOSS

On-Street Parking Today on E side of State

- Cars frequently parked very close to driveways
- Three main on-street parking areas:
 1. Linden – Arendell - 10 parked cars on average
 2. Arendell – Delaire Landing Driveway - 4 parked cars on average
 3. Rivers Edge Driveway – Grant - 6 parked cars on average

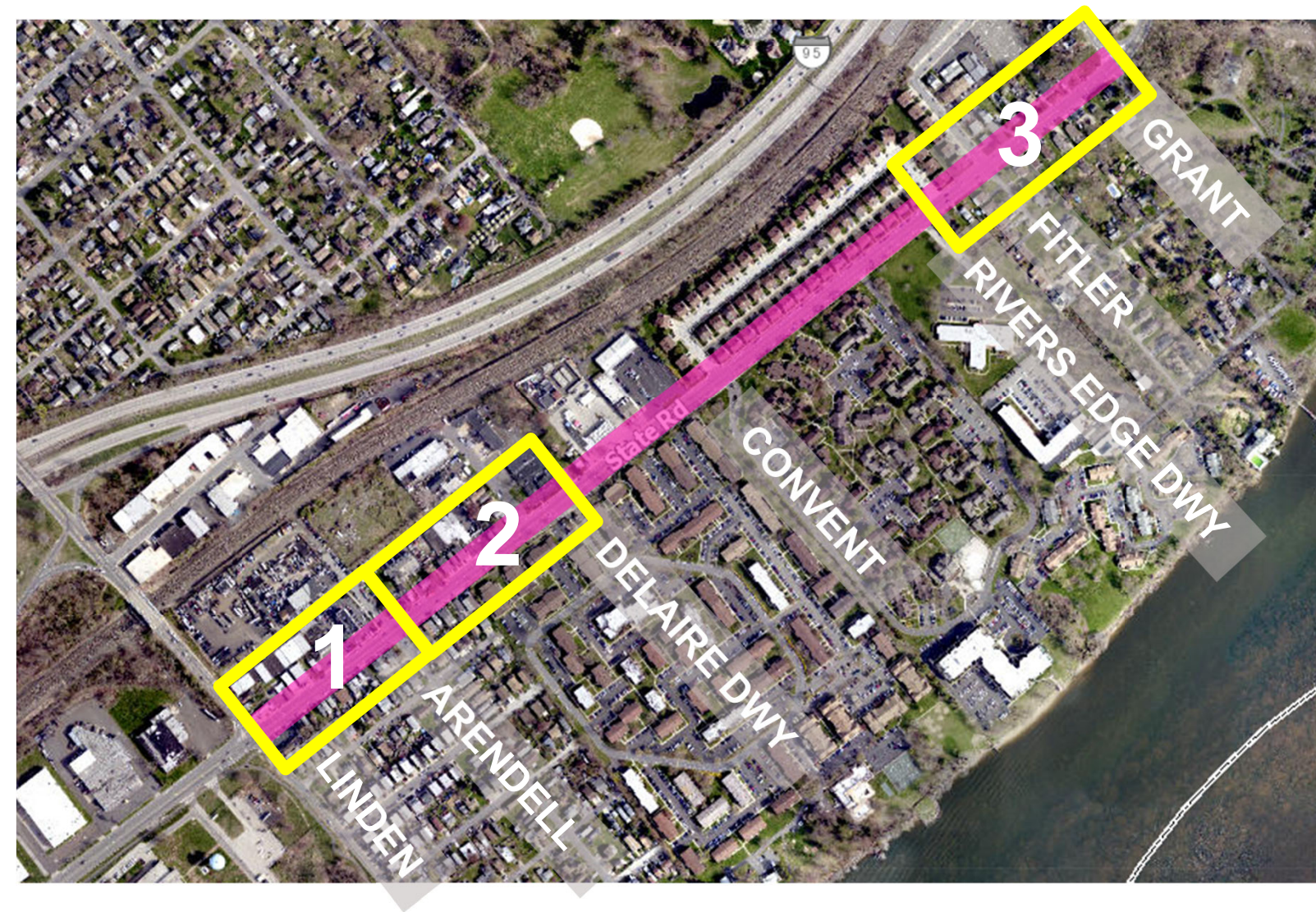




TRADE OFF: SOME PARKING LOSS

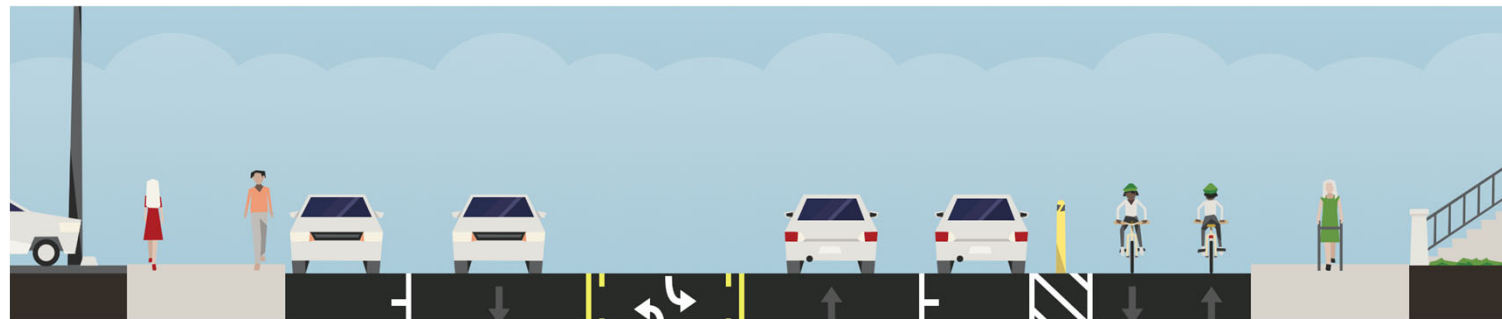
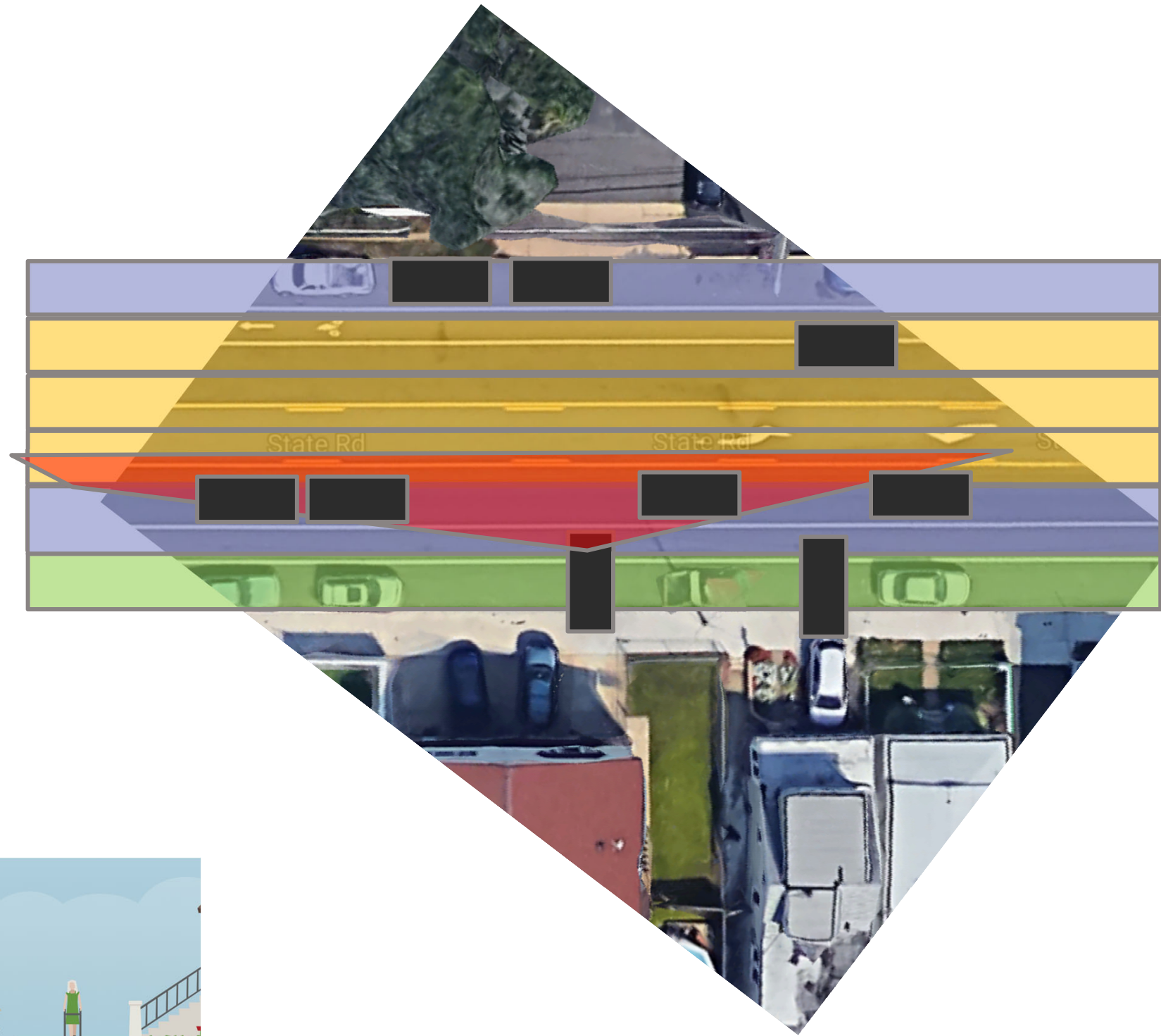
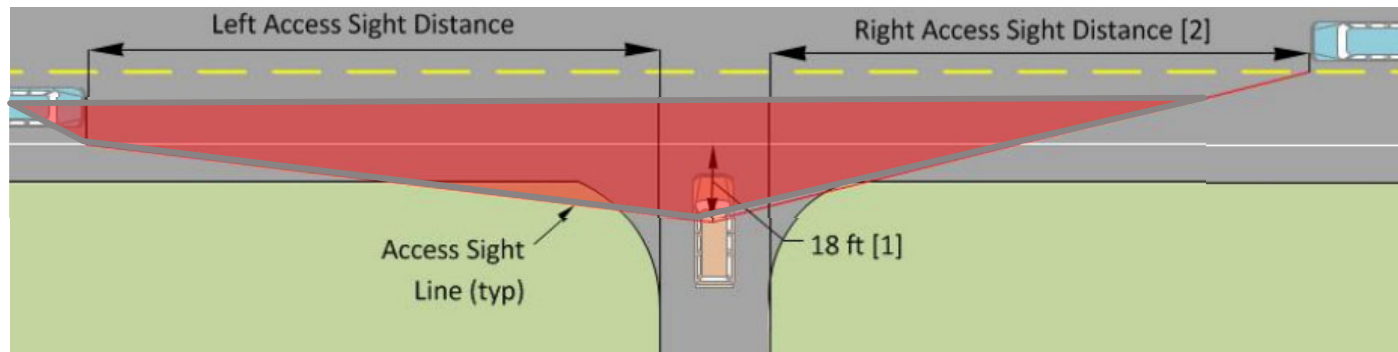
Some on-street parking loss on E side of State

1. Linden – Arendell
 - Today: 10 parked cars on average
 - Today: 23 spaces
 - **Future: 7 spaces approx. provided**
2. Arendell – Delaire Landing Driveway
 - Today: 4 parked cars on average
 - Today: 18 spaces
 - **Future: 15 spaces approx. provided**
3. Rivers Edge Driveway – Grant
 - Today: 6 parked cars on average
 - Today: 36 spaces
 - **Future: 15 spaces approx. provided**





DRIVER SIGHT LINES AT DRIVEWAYS



Proposed





NEXT STEPS

- **TODAY** – gather feedback on proposal
- Future – ask for letters of support for City Council parking action on State Road
- Winter 2020 – Pursue City Council Legislation
- Paving Season 2020 – PennDOT Repaving





QUESTIONS, CONCERNS

- What do you think about the proposed safety and traffic calming features?
- What are we missing/what else should we consider?





THANK YOU

Jeannette Brugger, AICP
Pedestrian & Bicycle Coordinator, OTIS

Rich Montanez, PE
Deputy Commissioner, Streets Department

Rob Armstrong, Ph.D.
Trails & Transportation Program Manager, OTIS

Nicholas Cinciruk, PE
District Traffic Engineer, Streets Department