

RACE STREET SAFETY PROJECT AT FRANKLIN SQUARE

2018 Fact Sheet

Reconfiguring the streetscape to make a safer and more comfortable street for people walking, biking, and driving.



PROJECT BOUNDARIES ARE RACE STREET BETWEEN 8TH AND 5TH

PRIMARY PROJECT GOALS:

1. Make it easier for people walking to cross Race St.
2. Calm traffic and dissuade erratic driving.
3. Provide dedicated space within the roadway for all travelers.

CRASHES ON RACE STREET

There were 55 crashes on Race Street between 8th and 5th from 2012 to 2016. Data for 2017 is not yet available.

1 FATALITY & 71 INJURIES



in crashes on Race Street between 8th & 5th Streets from 2012 to 2016.

RACE STREET TODAY

A comfortable pedestrian crossing distance is 33 feet [or 3 lanes without a median]. In some places, crossings on Race Street between 8th and 5th are up to 72 feet wide.

This project will make Race Street safer and more comfortable by:

- **shortening crossing distances** for people walking across the street;
- **calming vehicle speeds;**
- **decreasing weaving,** and
- **encouraging safe access for people walking** between Chinatown, Franklin Square, & Independence National Historic Park.

It is important for people walking to be able to access Franklin Square safely. Community members from Chinatown, employees in the nearby office buildings, and visitors to Independence National Historic Park all walk in the area.



RACE STREET SAFETY PROJECT AT FRANKLIN SQUARE

2018 Fact Sheet

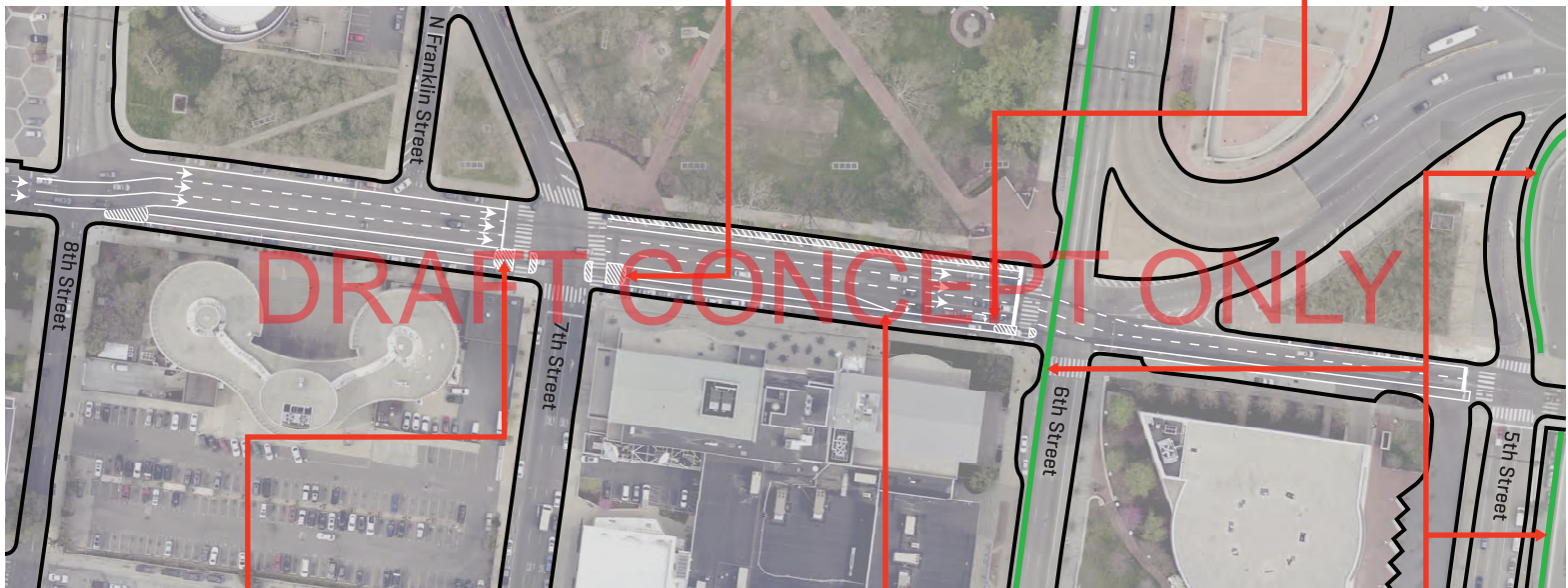
A new, improved roadway configuration on Race Street between 5th and 8th streets will make the Race Street corridor safer and more comfortable for all travelers using all modes. It will also enhance safe access to Franklin Square for residents and visitors, and improve the connection to the Ben Franklin Bridge Walking and Biking path.



Painted islands with flexible delineator posts at key intersections will shorten the crossing distance for pedestrians.



A dedicated turn lane will decrease confusion on the roadway and help keep vehicles moving smoothly.



Safer and more convenient pedestrian crossings will improve access to the many resources in Franklin Square and Franklin Square Playground for users of all ages.



A parking-protected bicycle lane will preserve on-street parking for residents, visitors, and local employees while making sure people on bikes are safe on the road.



Connections to existing bike lanes and the Ben Franklin Bridge path will enhance the City's bicycle and trail network.