



VISION ZERØ

CITY OF PHILADELPHIA



What Is Vision Zero?

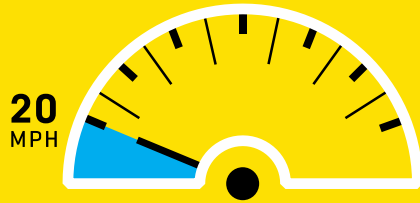
What Is Vision Zero?

A policy that states clearly that traffic deaths are preventable and unacceptable.

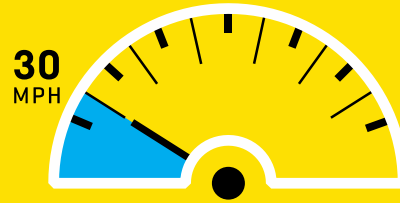
CORE PRINCIPLES:

- Human life takes priority over mobility;
- Human error is inevitable and unpredictable;
- People are inherently vulnerable and speed is a fundamental predictor of crash survival;
- Safe designs, education, and enforcement are essential contributors to a safe system.

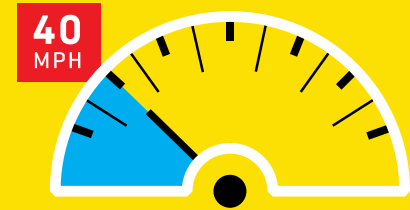
WHEN A PERSON IS HIT BY A DRIVER AT...



1 OUT OF **10** DIE



5 OUT OF **10** DIE



9 OUT OF **10** DIE

Slowing down saves lives.

Why Vision Zero in Philadelphia?

Every year, there are nearly 10,000 reported crashes on Philadelphia streets.

5-YEAR TREND:

- 2013: 80 killed / 225 severely injured
- 2014: 82 killed / 223 severely injured
- 2015: 83 killed / 250 severely injured
- 2016: 96 killed / 252 severely injured
- 2017: 78 killed / 244 severely injured

100 PEOPLE EVERY YEAR

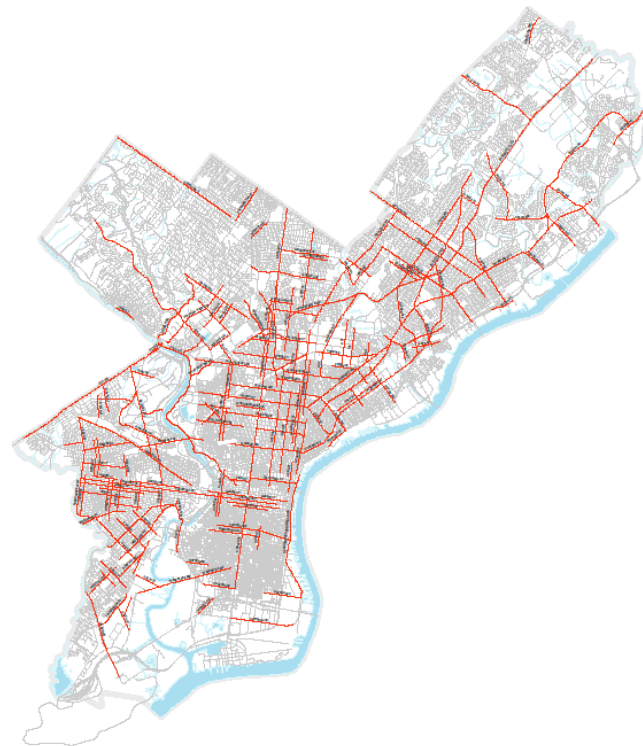


100 people are killed in traffic related crashes.

High Injury Network

50% of killed and serious injury **crashes** occur on **only 12%** of Philadelphia streets (PennDOT, 2012 – 2016).

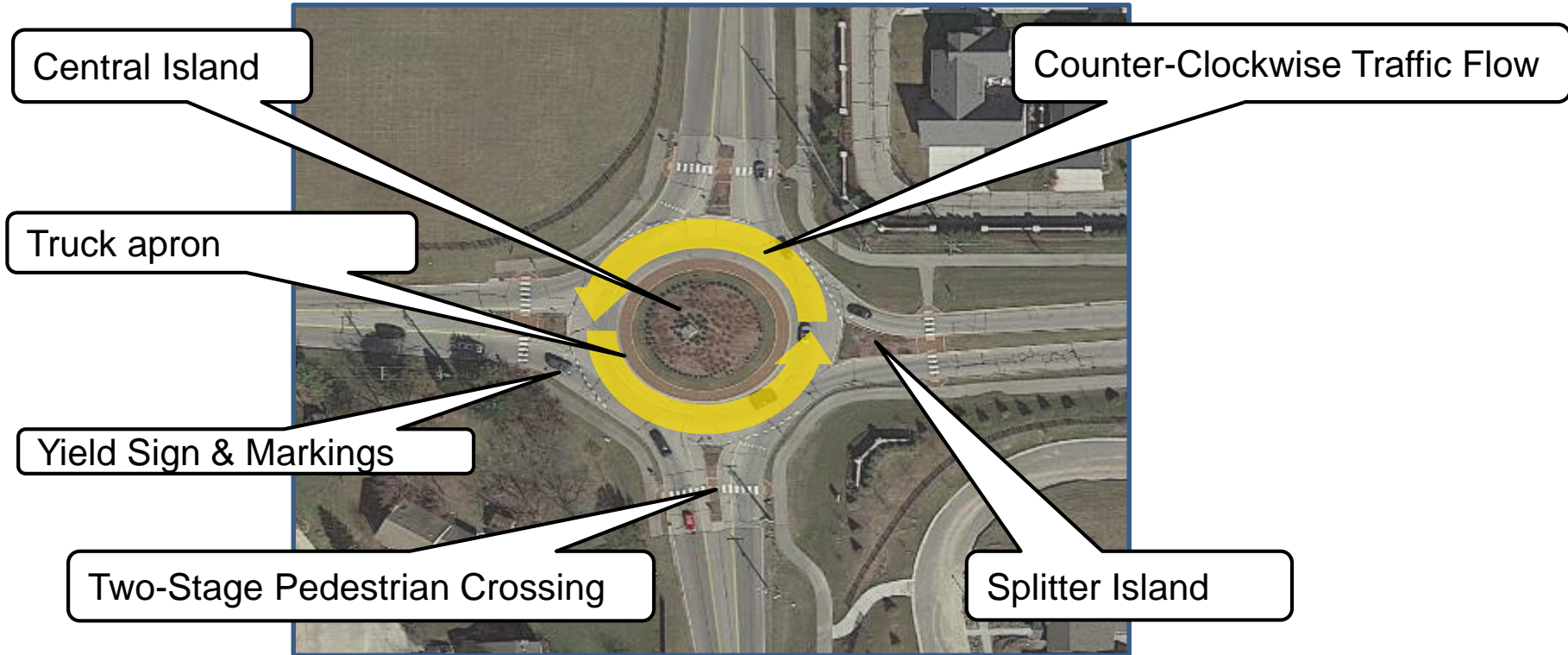
Queen Lane, between Fox Street and Wayne Avenue *is on Philadelphia's High Injury Network.*



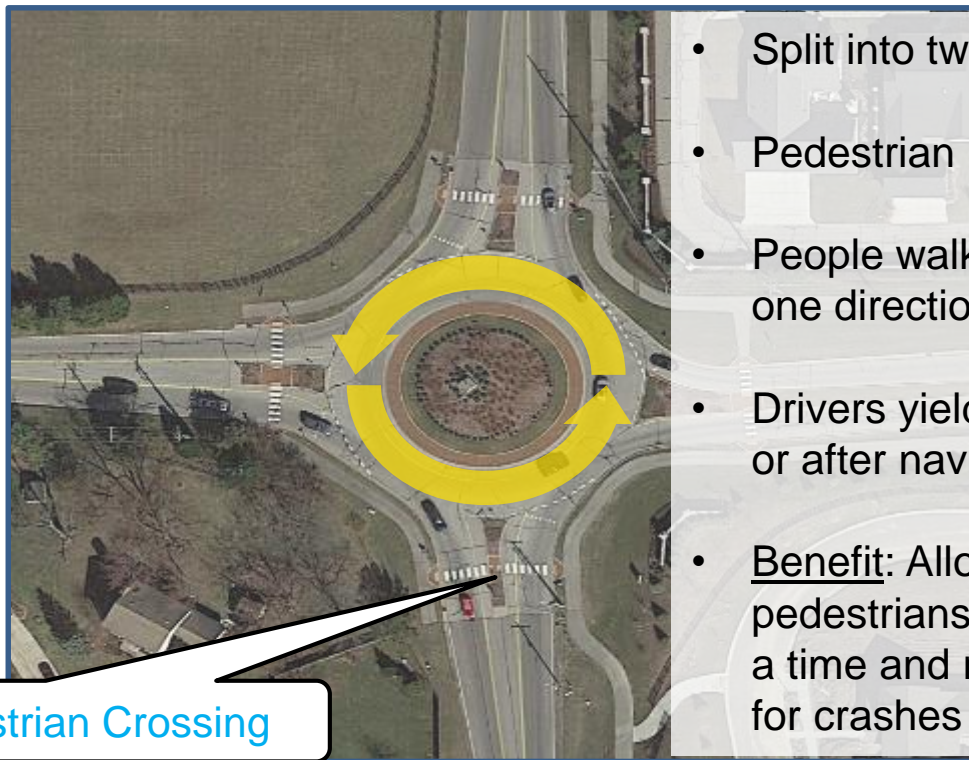
Vision Zero principles to priorities

- Evaluation/data;
- **Engineering;**
- Enforcement;
- Education / Engagement;

Basic elements of a roundabout



Basic elements of a roundabout

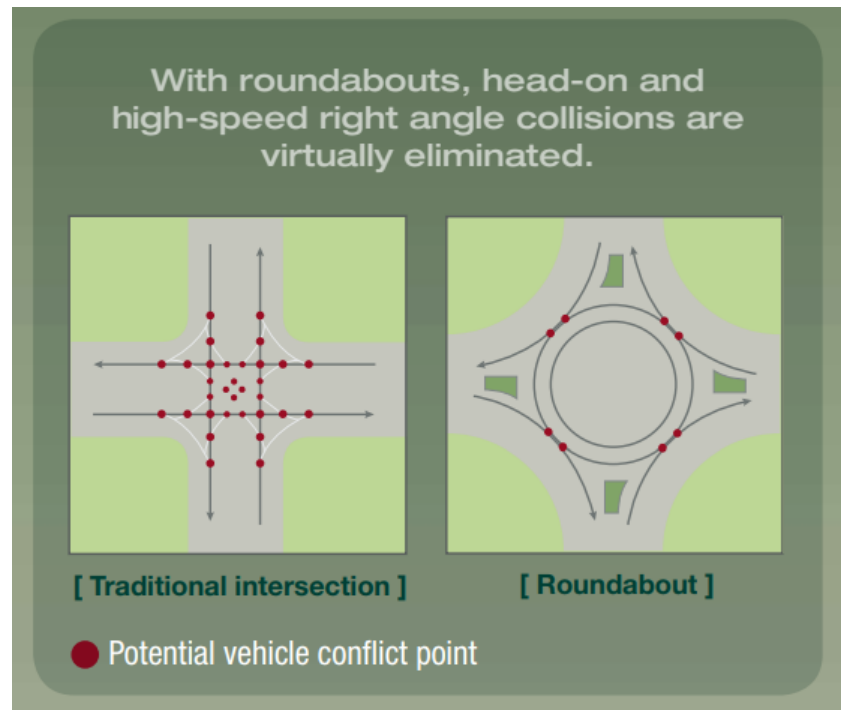


Two-Stage Pedestrian Crossing

- Split into two stages
- Pedestrian refuge area provided
- People walking only need to cross one direction of traffic at a time
- Drivers yield to pedestrians before or after navigating the roundabout
- Benefit: Allows drivers and pedestrians to focus on one task at a time and reduces the potential for crashes

Roundabouts – Safety benefits

- Traffic slows approaching roundabout
- Slower average speeds reduce severity of crashes for vehicles and people walking & biking alike
- All traffic travels in the same direction through the roundabout—and the number of potential conflict points is greatly reduced.
 - The potential for T-bone and head-on crashes is virtually eliminated.

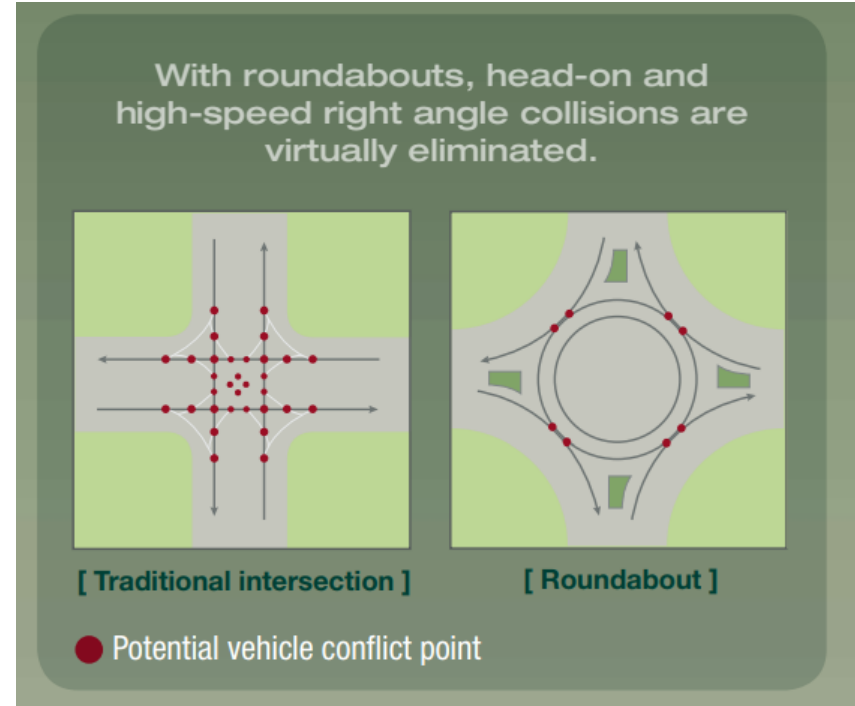


Roundabouts – Safety benefits

Did you know?

A standard 4-leg intersection has 32 potential vehicular conflict points.

A standard 4-leg roundabout has only 8.



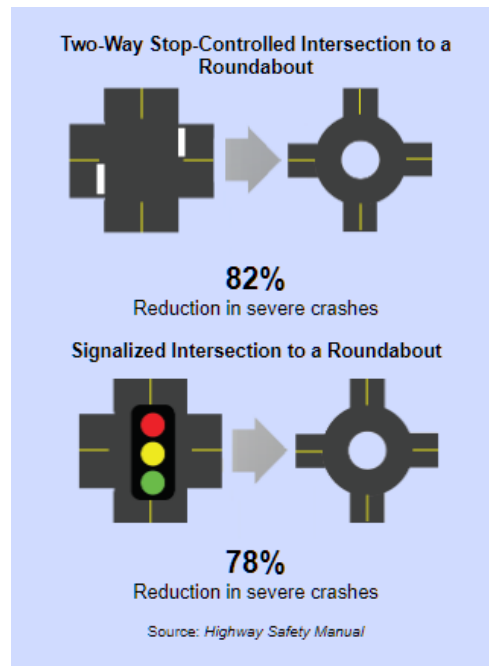
Roundabouts – Proven safety countermeasure

Did you know?

Roundabouts are recognized by Federal Highways Administration (FHWA) as proven safer than stop or signal controlled intersections.

For more information:

<https://safety.fhwa.dot.gov/provencountermeasures/roundabouts/>



Source: FHWA

Roundabouts – Crash reduction in Pennsylvania

According to a recent evaluation by the Pennsylvania Department of Transportation (PennDOT) of (11) roundabouts across the state, it was found that roundabouts:

- Reduced fatalities and serious injuries by 100%
- Reduced injuries by 95%
- Reduced property damage-only crashes by 2%
- Reduced all crashes by 47%

Source: Bureau of Maintenance & Operations, PennDOT, 2018

<https://www.penndot.gov/pages/all-news-details.aspx?newsid=536>



**VISION
ZERØ**

CITY OF PHILADELPHIA

**OUR CITY AND OUR
FAMILIES DESERVE
SAFER STREETS.**

Zero traffic deaths by 2030.



Thank you

Gustave Scheerbaum, PE

Department of Streets

gustave.scheerbaum@phila.gov

 [@gscheerbaum](https://twitter.com/gscheerbaum)