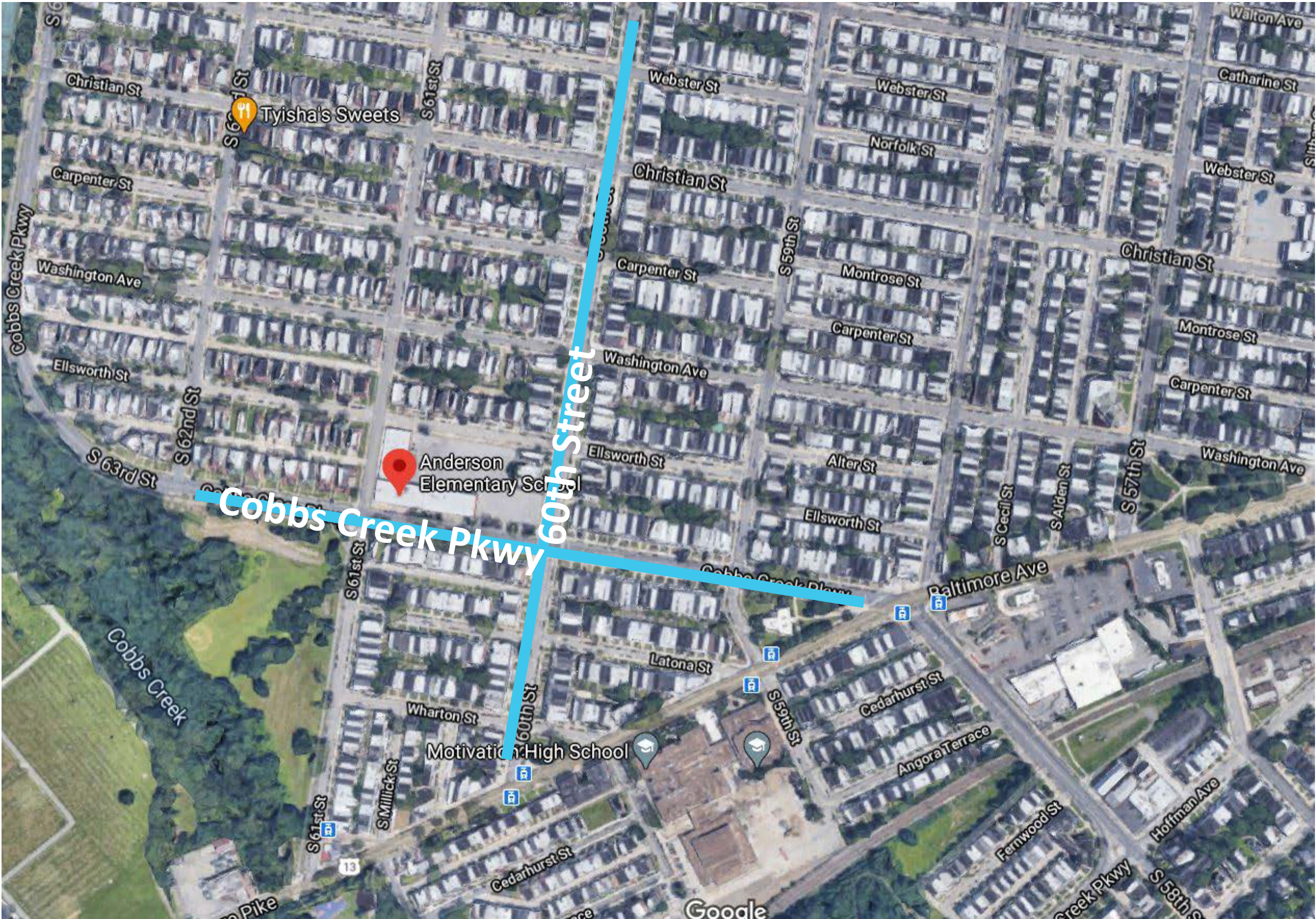


# City of Philadelphia Art Commission

Add B. Anderson Schoolyard Improvements  
April 14, 2021



West Philadelphia: Cobbs Creek Neighborhood





Existing Conditions: Add B. Anderson Schoolyard

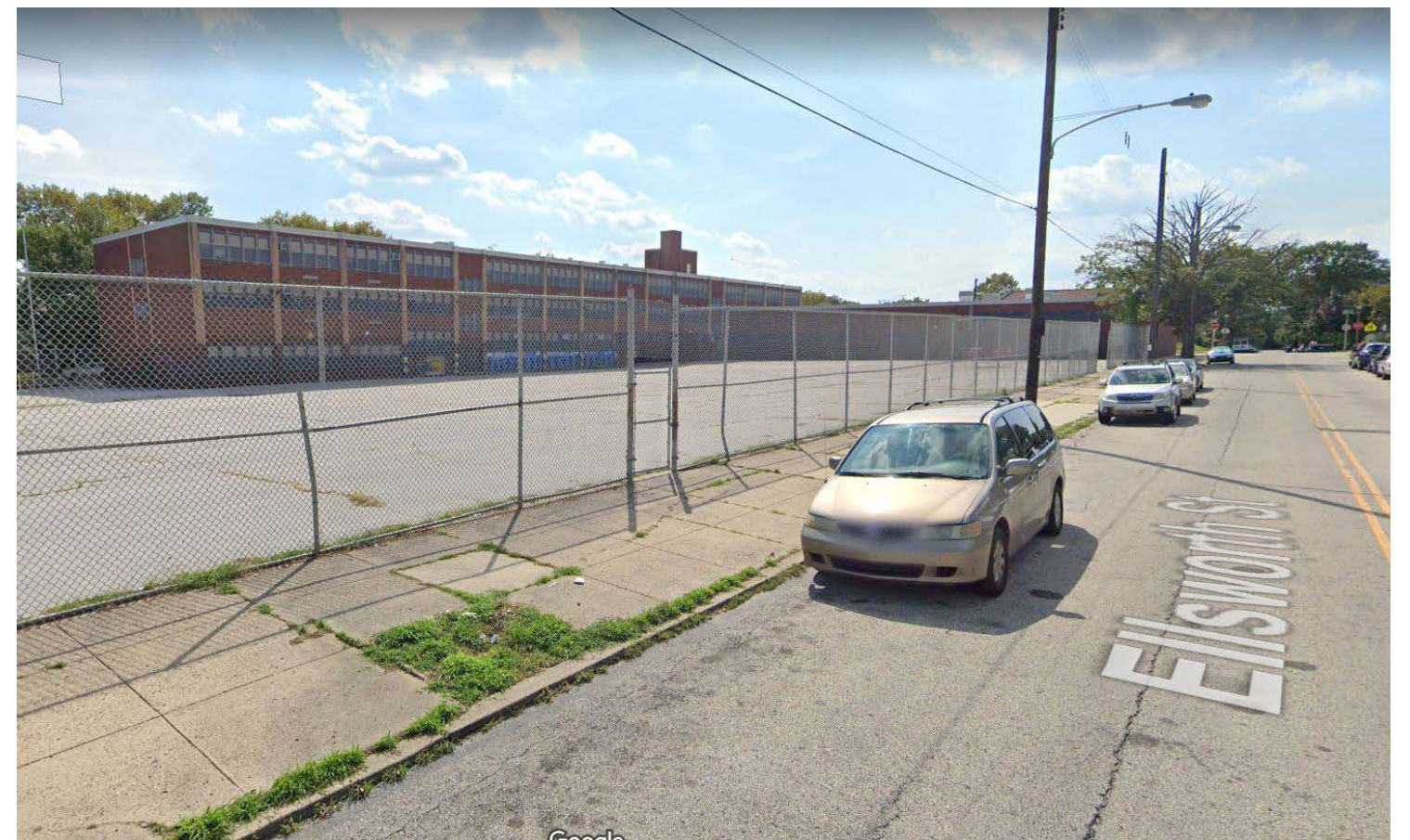




## Existing Conditions: Street Views



View from 60th Street



View from Ellsworth Street



# Existing Conditions: Property Views

## Site view towards Ellsworth Street





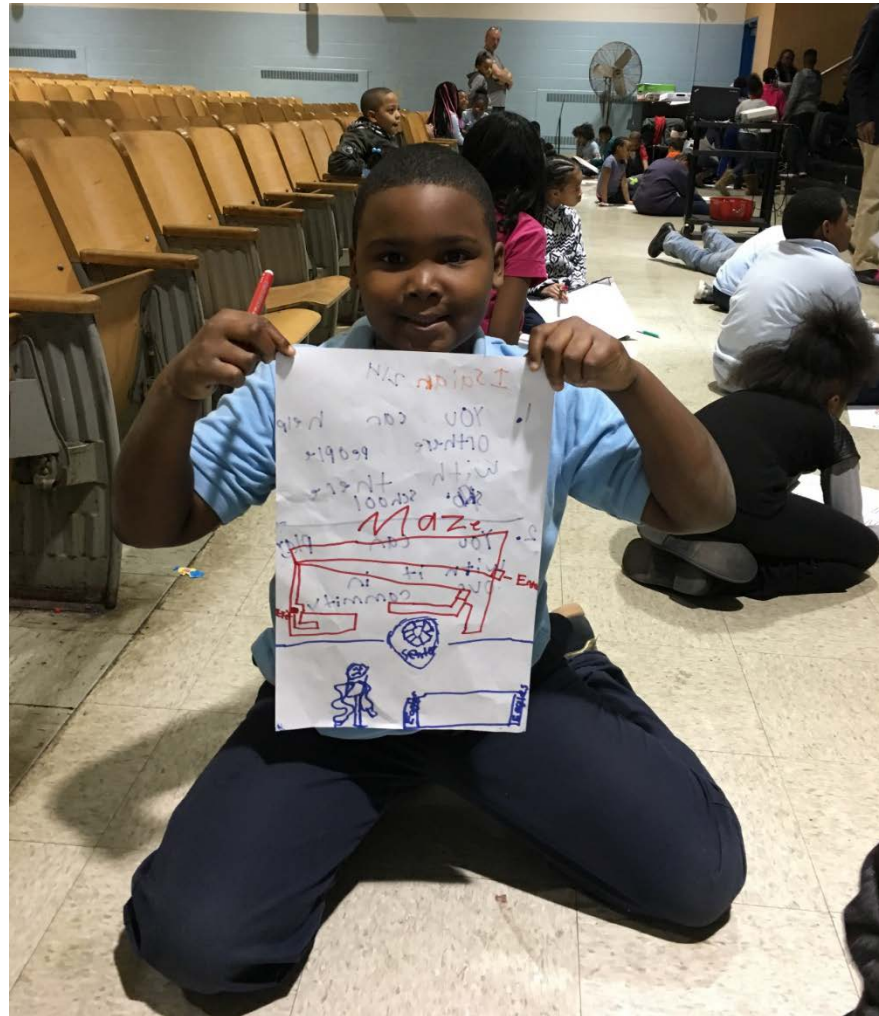
# Existing Conditions: Property Views

## Site view towards 60th Street

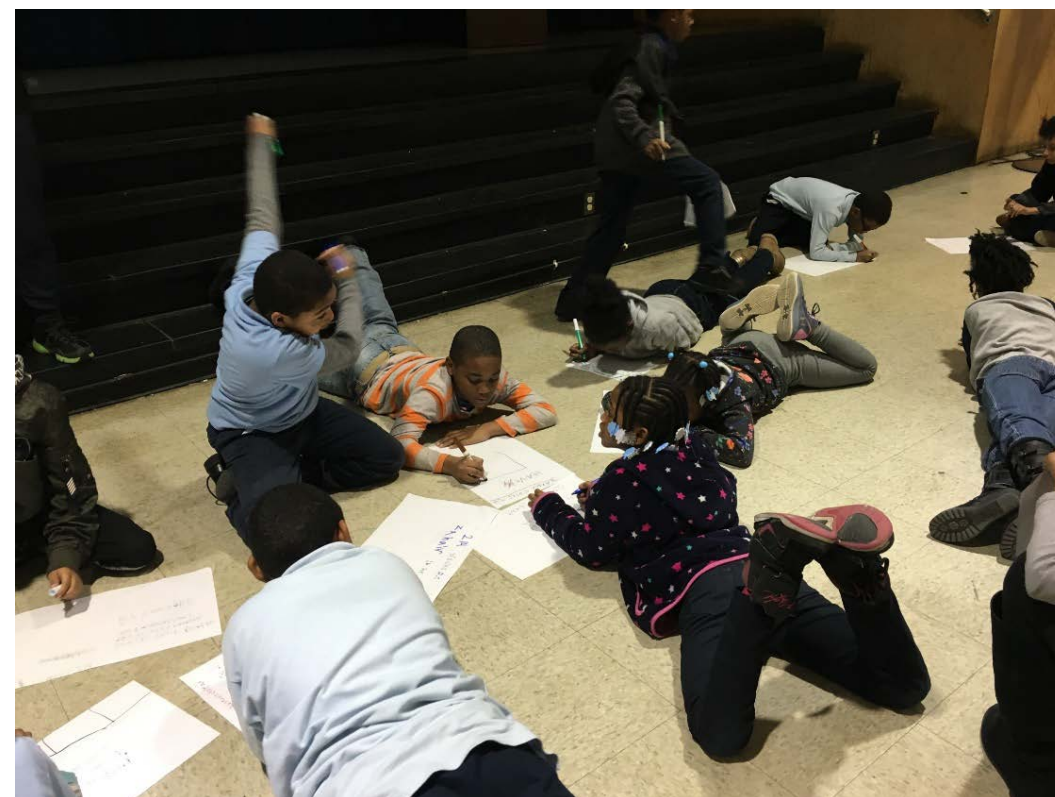




# Participatory Design Engagement

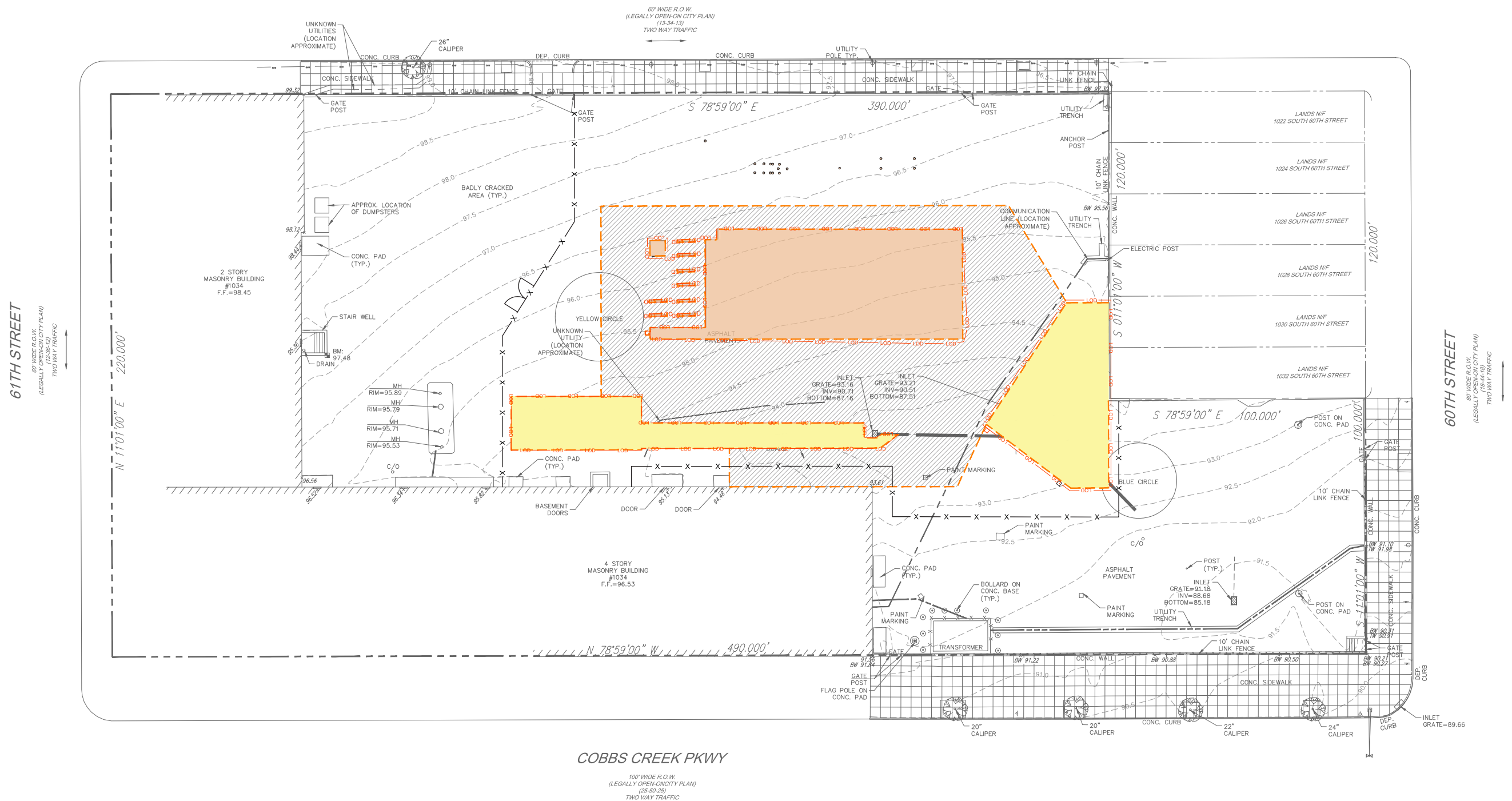


Over a three month period, The Trust for Public Land held Participatory Design and community workshops to understand the current use, determine an overall vision and develop a conceptual design for the schoolyard.





Demolition Plan



EXISTING CONDITIONS LEGEND

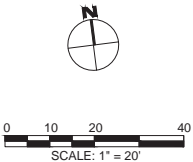
	BENCHMARK		BUILDING LINE
	UTILITY POLE		PROPERTY LINE
	UTILITY POLE WITH LIGHT		FENCE
	TRAFFIC SIGN		CONTOUR LINE
	FLAG POLE		OVERHEAD WIRES
	BOLLARD/POST		COMMUNICATION LINE (VERIZON)
	TREE DECIDUOUS/TRUNK SIZE		STORM WATER LINE
	GRATE INLET/ YARD DRAIN		ELECTRIC LINE
	CURB LINE		UNKNOWN UTILITY LINE
	CRACKED PAVEMENT		

DEMOLITION LEGEND

	MILL AND OVERLAY
	FULL DEPTH ASPHALT REMOVAL FOR SITE FEATURES
	FULL DEPTH ASPHALT REMOVAL FOR SMPs (NOT COUNTED AGAINST OVERALL SITE DISTURBANCE)
	LIMIT OF DISTURBANCE
	TEMPORARY CONSTRUCTION FENCE
	SAW CUT

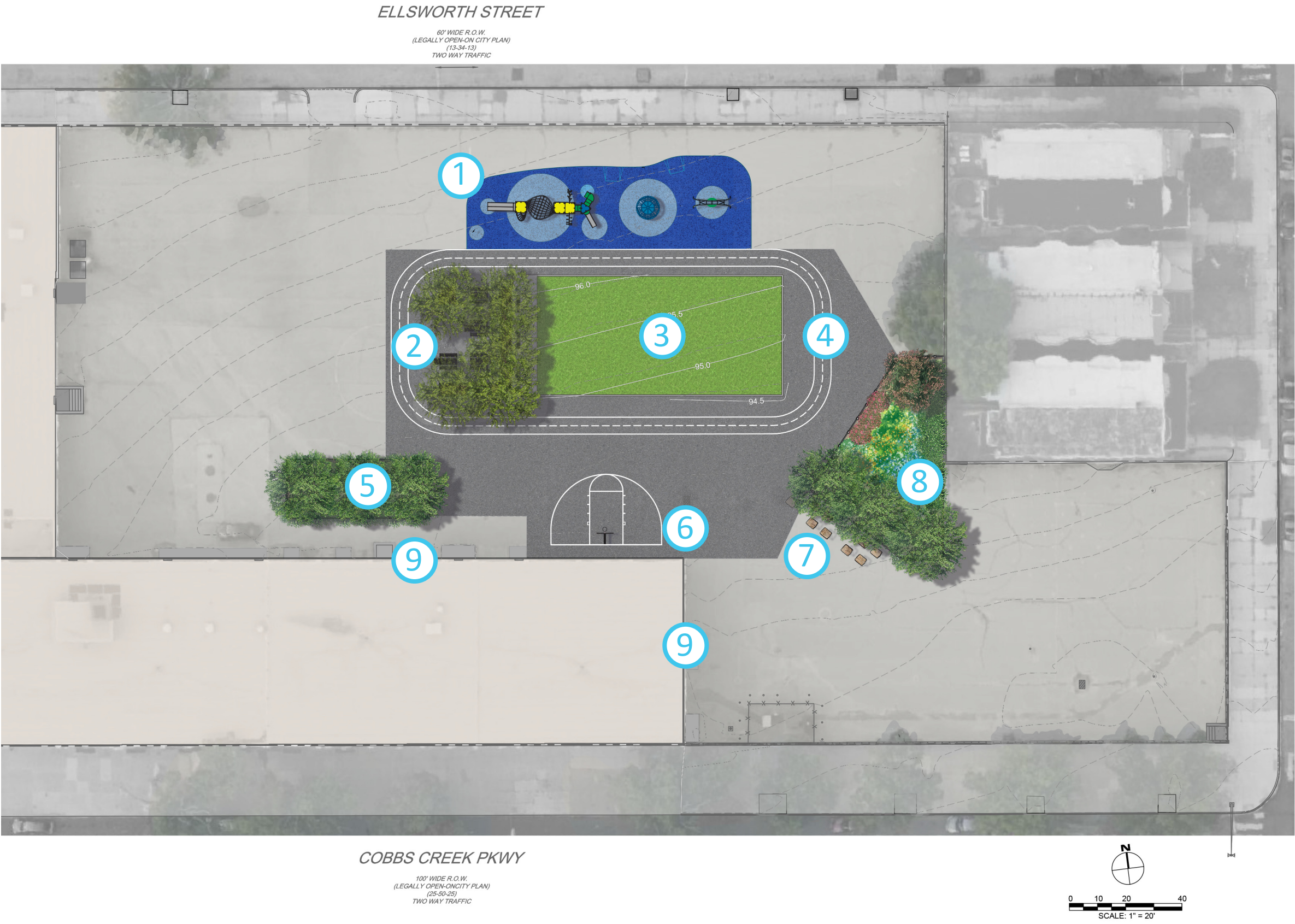
DEMOLITION NOTES:

- LOCATION OF TEMPORARY FENCING MAY NEED TO BE ADJUSTED WHEN MILLING NEXT TO EAST WING OF THE BUILDING IN FRONT OF EXISTING DOORS AND CONCRETE PADS TO REMAIN. CONTRACTOR TO COORDINATE CONSTRUCTION ACTIVITIES WITH THE SCHOOL TO MAINTAIN SAFE PEDESTRIAN ACCESS.
- WHERE EXISTING FENCE SERVES AS CONSTRUCTION FENCING, SECURE ANY OPENING CHAINLINK FABRIC IF PRESENT.
- CONTRACTOR TO CHECK CONSTRUCTION FENCING AT CLOSE OF WORK TO ENSURE THAT IT CANNOT BE BREACHED.
- CONTRACTOR TO IMPLEMENT DUST CONTROL MEASURES AS FEASIBLE DURING SAW CUTTING, MILLING AND EXCAVATION OPERATIONS.
- REFER TO KEYED ITEMS ON DEMOLITION LEGEND AND CONSTRUCTION DETAILS FOR DEMOLITION OF PAVEMENT ASSOCIATED WITH SITE FURNISHINGS AND PLAY EQUIPMENT INSTALLATION.
- ALL EXISTING PAVED SURFACE TO REMAIN MUST BE PROTECTED AND PRESERVE



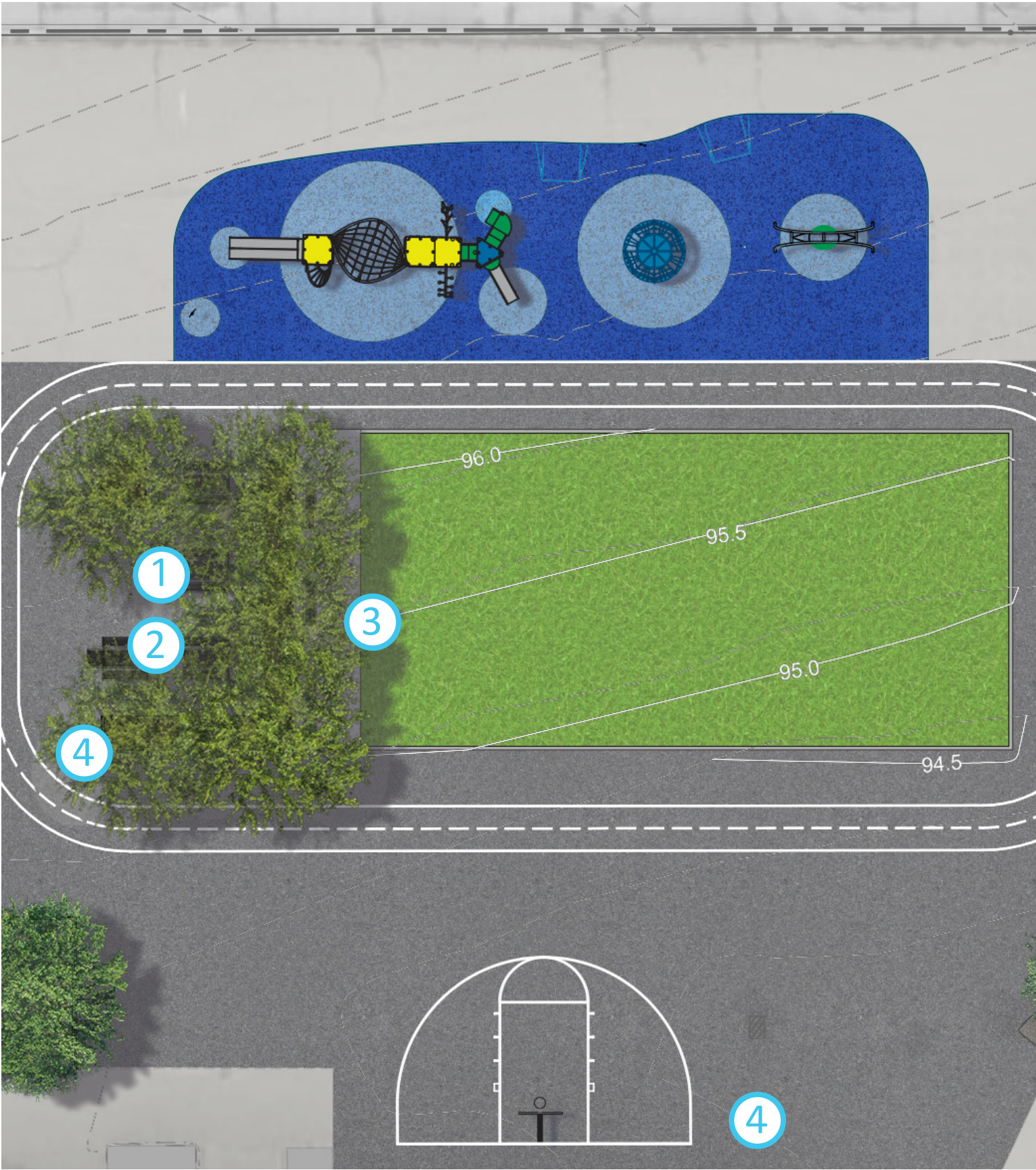


# Site Plan





Site Furniture: Trash receptacle, tables and bench



① Picnic Table



② ADA Picnic Table



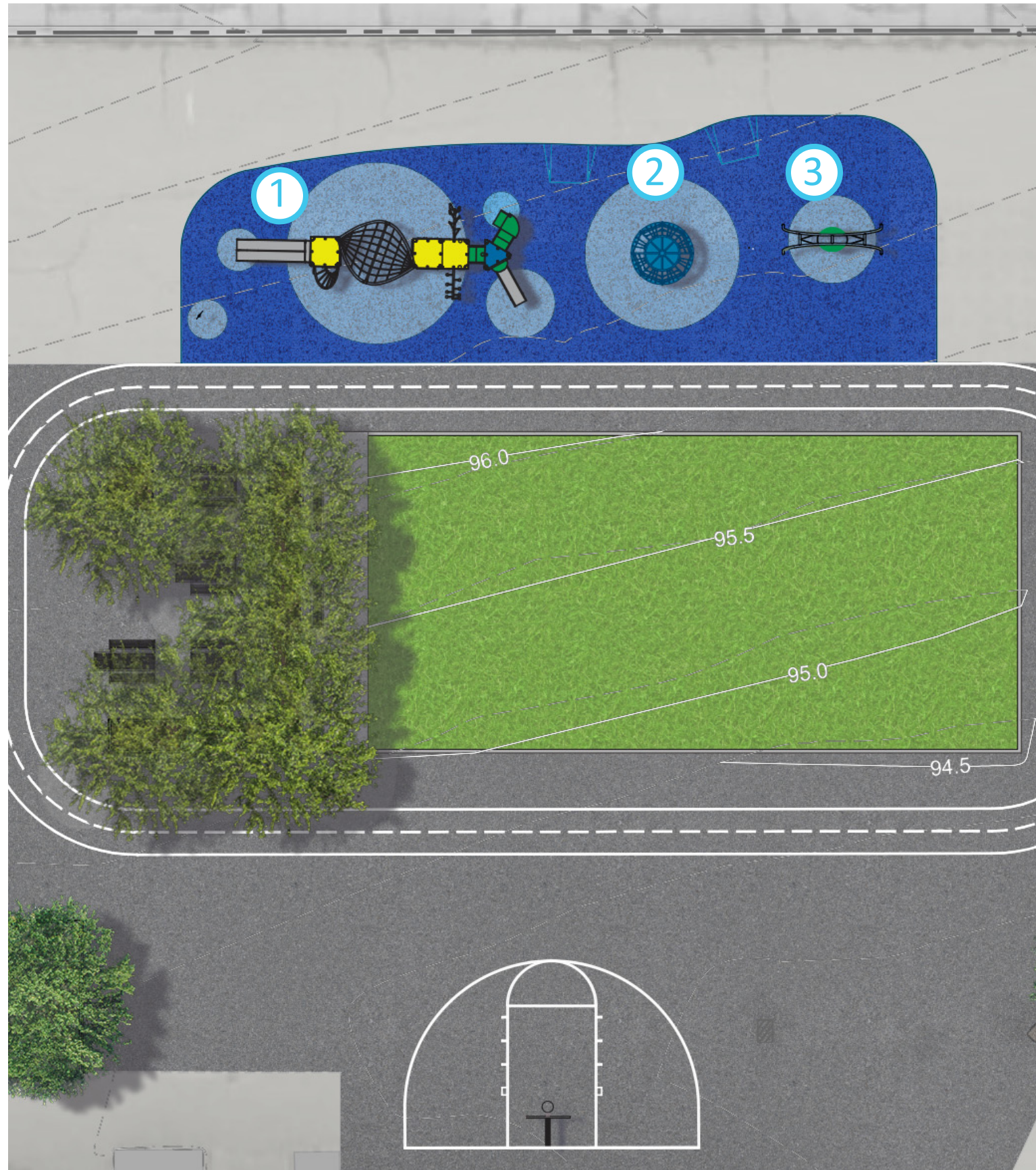
③ Bench



④ Trash Receptacle



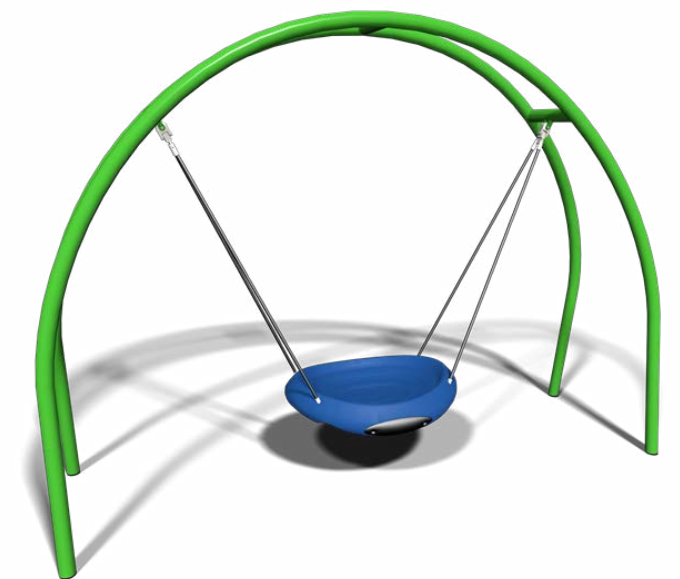
# Play Equipment: oodle swing, global motion, play booster



① Playbooster



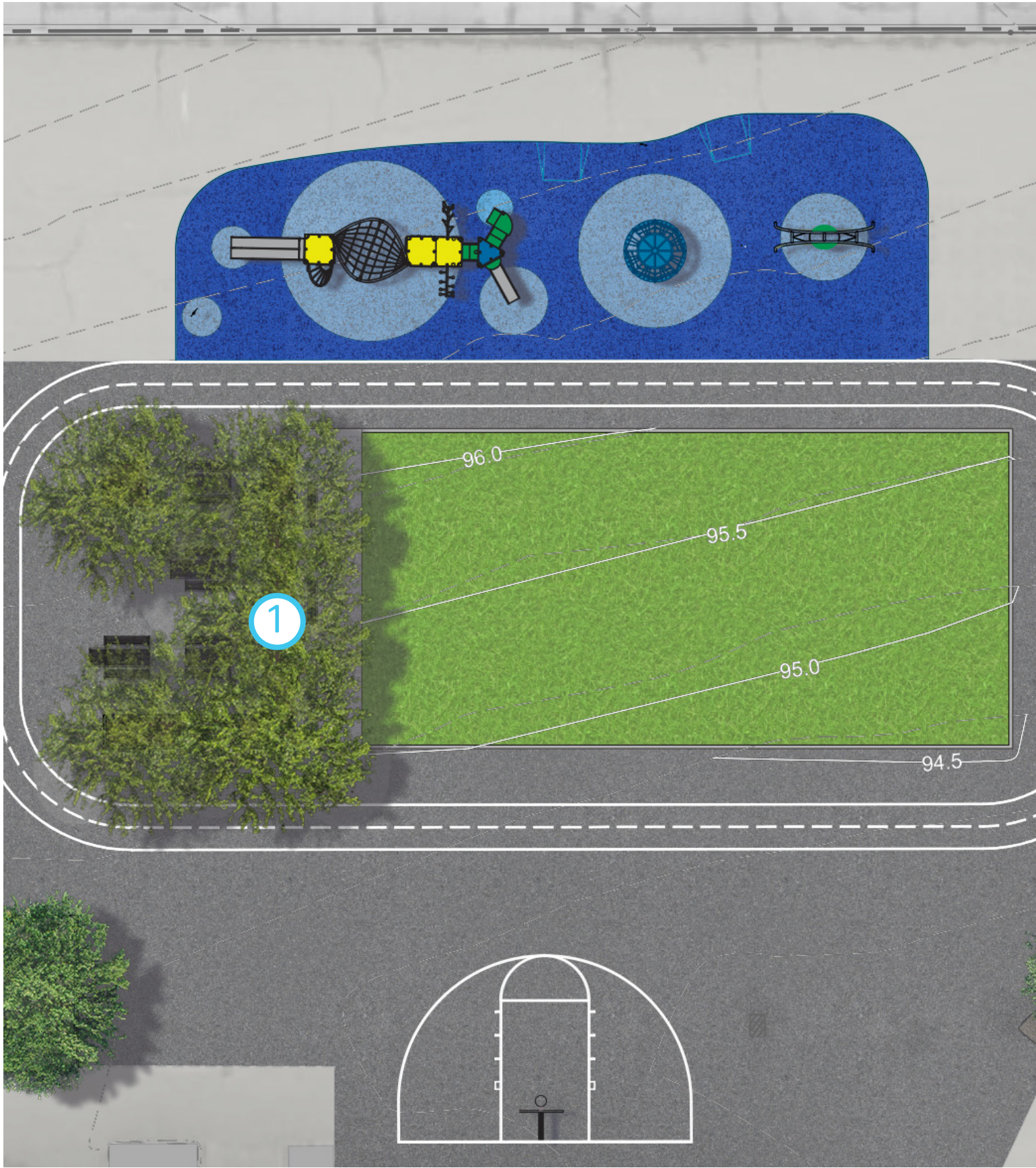
② Global Motion



③ Oodle Single Swing



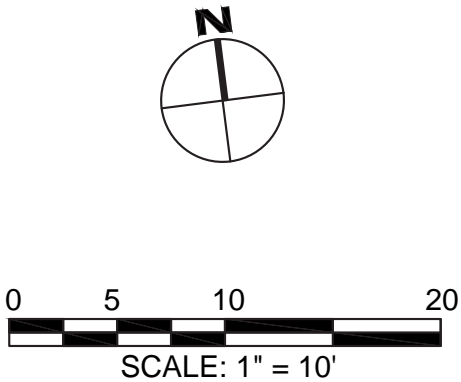
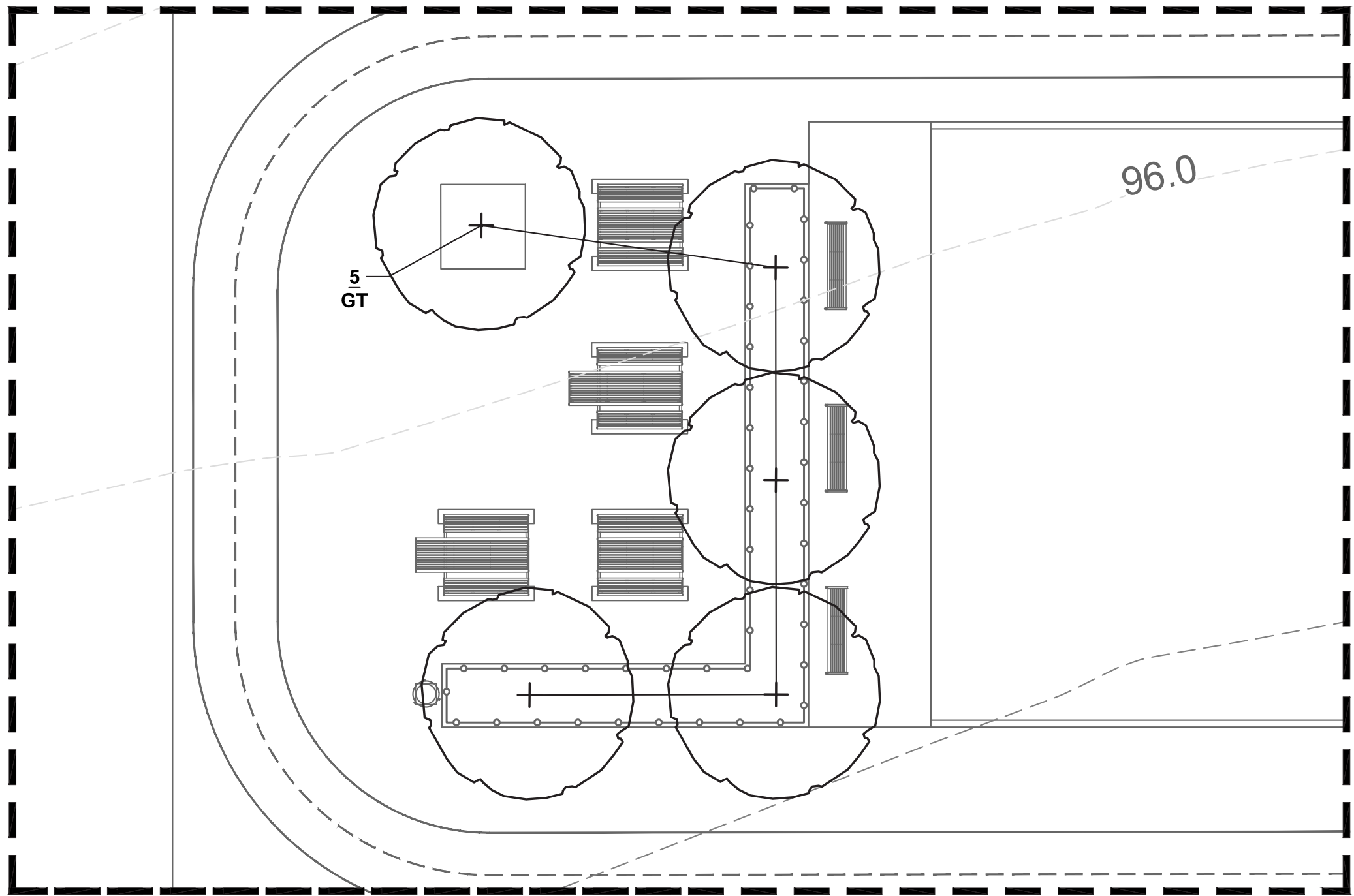
# Picnic Area Planting



① Thornless Honey Locust



# Picnic Area Planting



P3 - PLANT SCHEDULE					
Quantity	Symbol	Scientific Name	Common Name	Root	Spacing
TREES					
5	GT	<i>Gleditsia triacanthos var. inermis</i>	Thornless Honey Locust	3" caliper, B&B	As shown



# Tree Trench Planting: tree, shrub, perennials



① American Horbeam



② Red Twig Dogwood



③ Fireworks  
Rough  
Goldenrod



④ October Skies  
Aromatic Aster



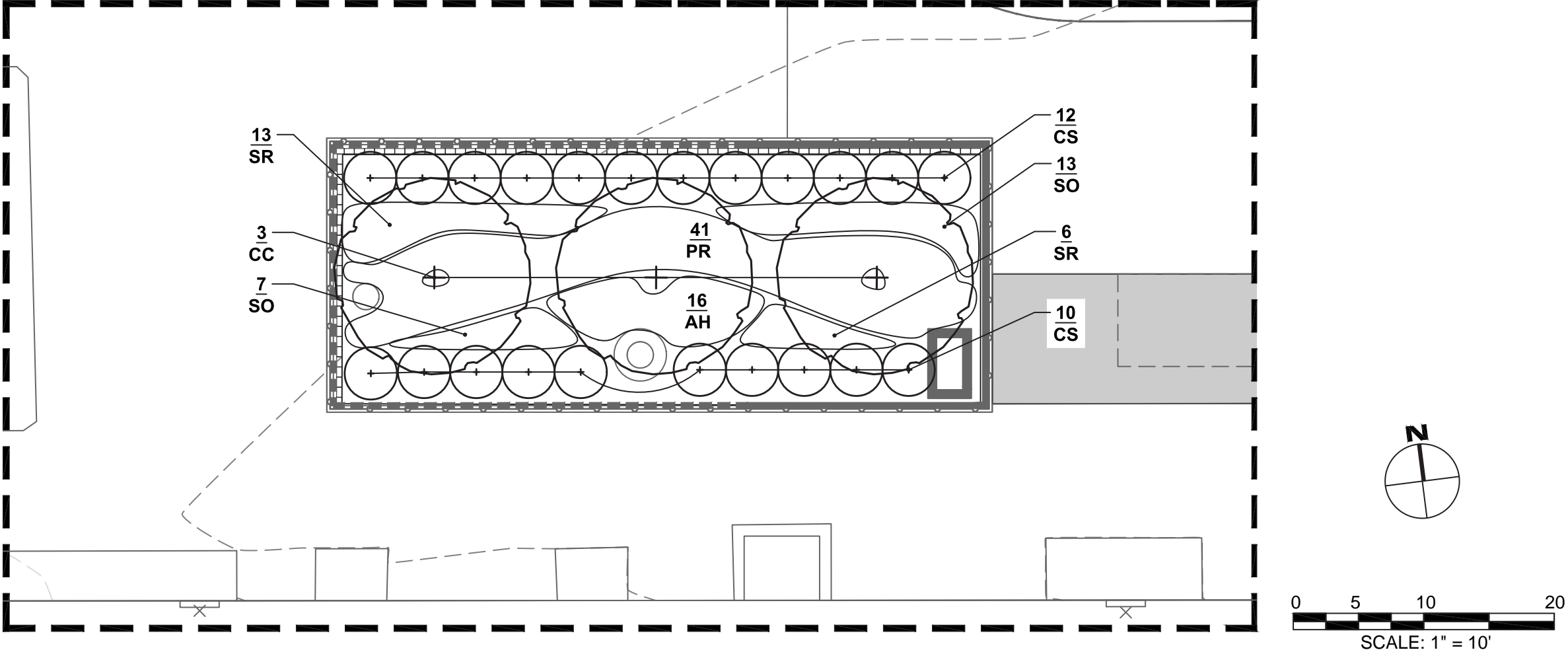
⑤ Threadleaf Blue Star



⑥ Ruby Ribbons  
Panic Grass



Tree Trench Planting: tree, shrub, perennials



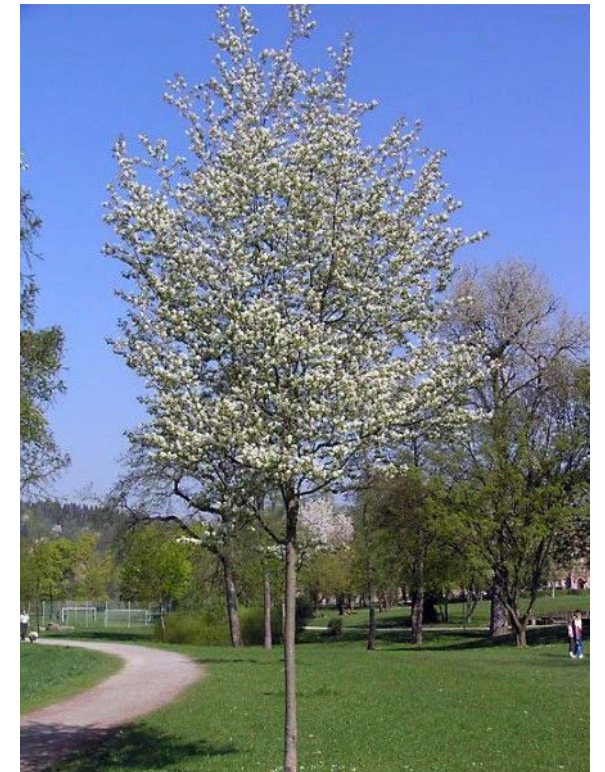
P1 - PLANT SCHEDULE					
Quantity	Symbol	Scientific Name	Common Name	Root	Spacing
TREE					
3	CC	<i>Carpinus caroliniana</i>	American Hornbeam	3" caliper, B&B	As shown
SHRUBS					
22	CS	<i>Cornus sericea 'Farrow' ARCTIC FIRE</i>	Farrow ARCTIC FIRE Red Twig Dogwood	#2 container	48" on center
PERENNIALS					
32	AH	<i>Amsonia hubrichtii</i>	Threadleaf Bluestar	#1 container	24" on center
41	PR	<i>Panicum virgatum 'Ruby Ribbons'</i>	Ruby Ribbons Switch Grass	#1 container	30" on center
19	SR	<i>Solidago rugosa 'Firework'</i>	Fireworks Rough Goldenrod	#1 container	24" on center
20	SO	<i>Symphotrichum novae-angliae 'October Skies'</i>	October Skies Aromatic Aster	#1 container	24" on center



# Rain Garden Planting: trees, shrubs



① Black Gum



② Robin Hill Apple Serviceberry



③ Dwarf Fothergilla



④ Blue Blaze



# Rain Garden Planting: perennials, grasses



① Blue Flag Iris



② Shenandoah Panic Grass



③ Fireworks Rough Goldenrod



④ Mountain Mint



# Rain Garden Planting: perennials, grasses



① Hameln Dwarf Fountain Grass



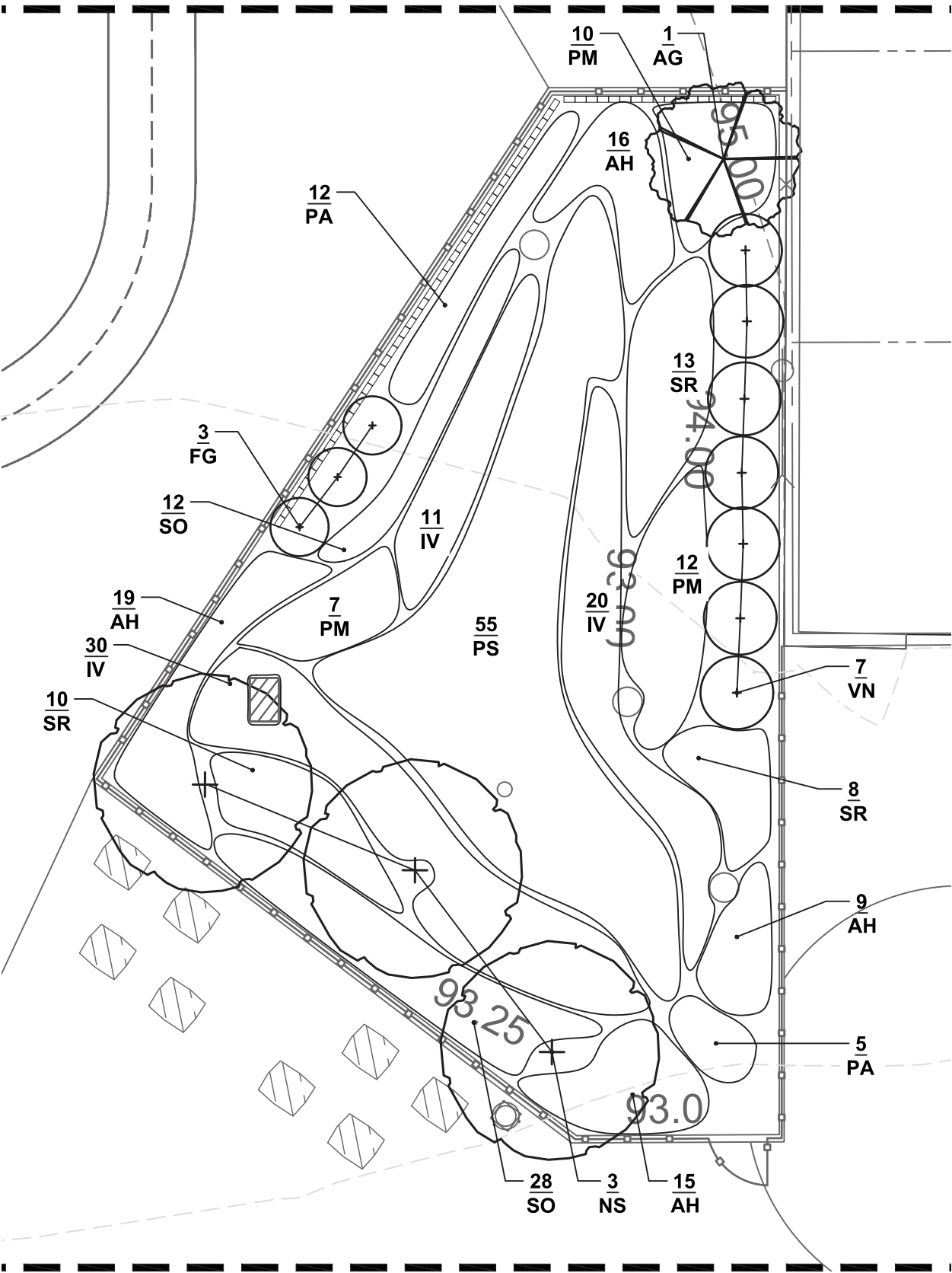
② October Skies Aromatic Aster



③ Threadleaf Blue Star



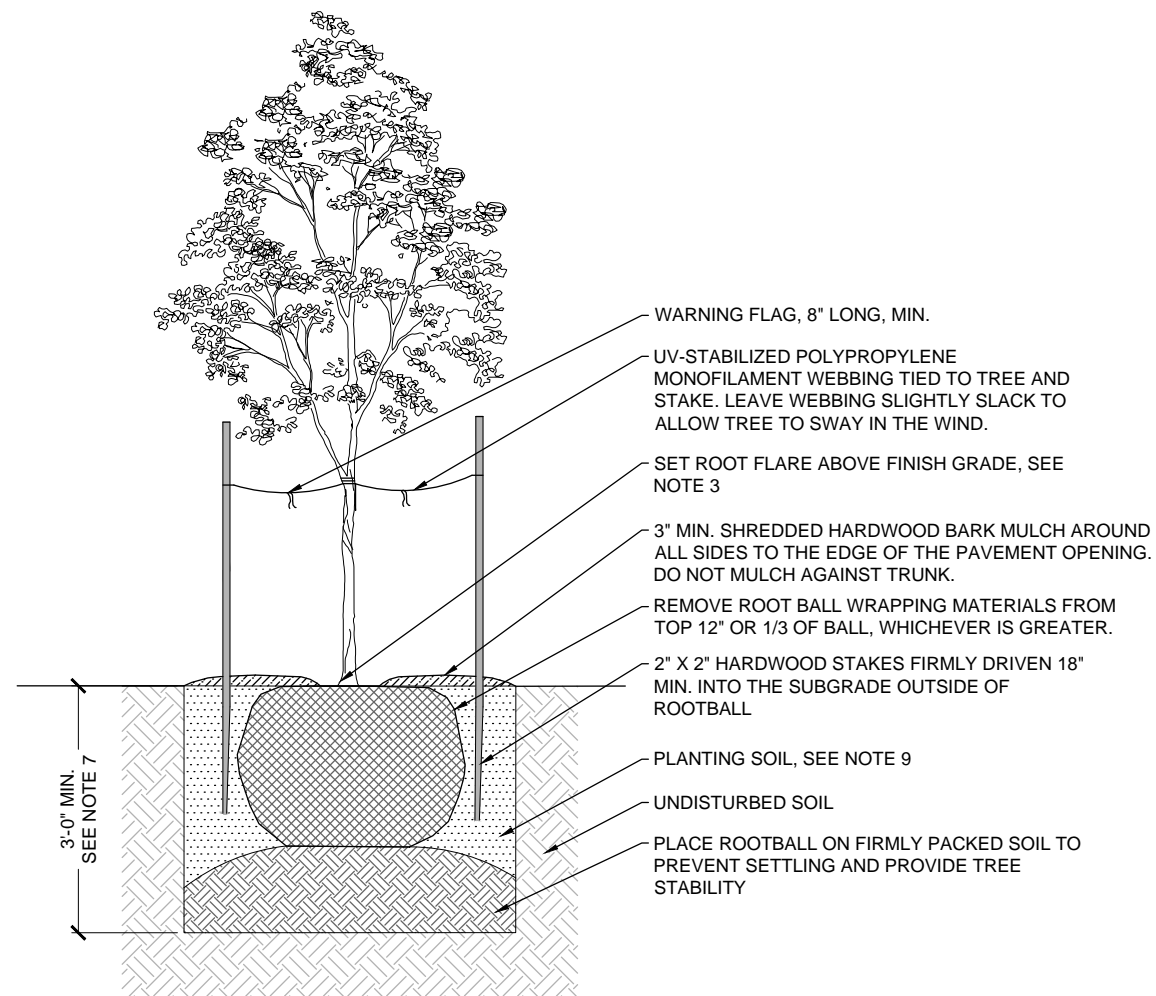
# Rain Garden Planting: trees, shurbs, erennials, grasses



P2 - PLANT SCHEDULE					
Quantity	Symbol	Scientific Name	Common Name	Root	Spacing
TREES					
1	AG	<i>Amelanchier x grandiflora</i> 'Robin Hill'	Robin Hill Apple Serviceberry	3" caliper, B&B	As shown
3	NS	<i>Nyssa sylvatica</i>	Black Gum	3" caliper, B&B	As shown
SHRUBS					
3	FG	<i>Fothergilla gardenii</i>	Dwarf Fothergilla	#3 container	36" on center
7	VN	<i>Viburnum dentatum</i> 'Blubzam' BLUE BLAZE	BLUE BLAZE Blubzam Arrowwood Viburnum	#3 container	48" on center
GRASSES AND PERENNIALS					
59	AH	<i>Amsonia hubrichtii</i>	Threadleaf Bluestar	#1 container	24" on center
61	IV	<i>Iris versicolor</i>	Blue Flag Iris	#1 container	30" on center
17	PA	<i>Pennisetum alopercoides</i> 'Halemn'	Halemn Dwarf Fountian Grass	#1 container	24" on center
70	PS	<i>Panicum virgatum</i> 'Shenandoah'	Shanandoah Panic Grass	#1 container	30" on center
29	PM	<i>Pycnanthemum muticum</i>	Mountain Mint	#1 container	30" on center
33	SR	<i>Solidago rugosa</i> 'Fireworks'	Fireworks Rough Goldenrod	#1 container	24" on center
40	SO	<i>Symphyotrichum oblongifolium</i> 'October Skies'	October Skies Aromatic Aster	#1 container	24" on center

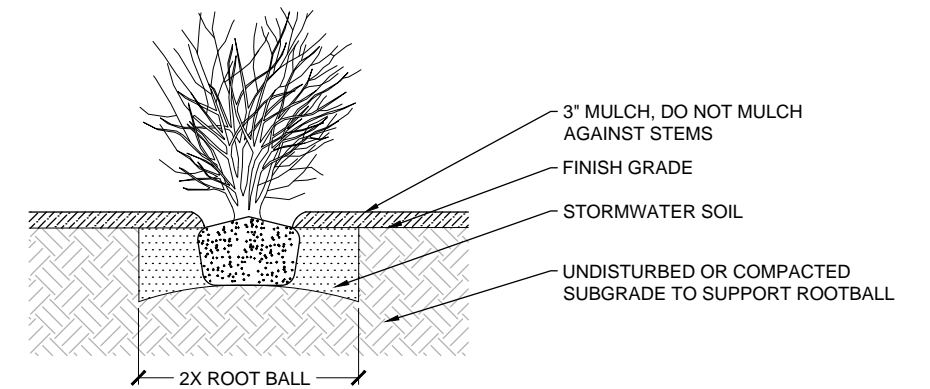


## Planting Details



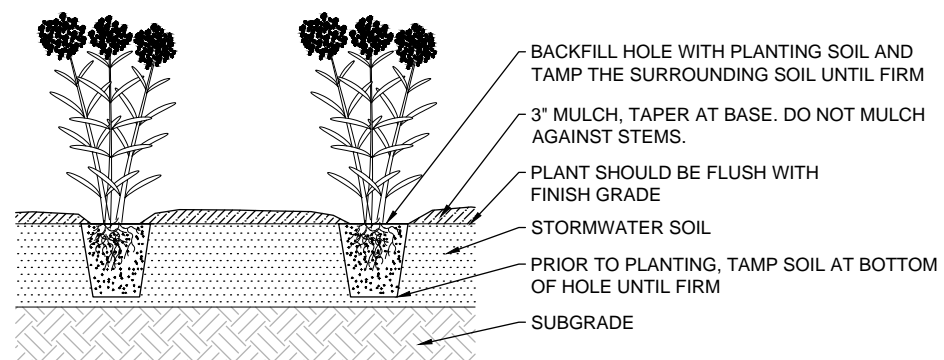
1 TREE PLANTING  
SCALE: 1/2" = 1'-0"

- NOTES:**
1. DO NOT HEAVILY PRUNE THE TREE AT PLANTING. PRUNE ONLY CO-DOMINANT LEADERS, BROKEN, DEAD OR DAMAGED BRANCHES. PRUNE WITH A CLEAN CUT PER CURRENT ANSI A300 & ISA STANDARDS. DO NOT CUT TREE'S CENTRAL LEADER.
  2. SET PLANTS PLUMB AND FACE TO GIVE THE BEST APPEARANCE OR RELATIONSHIP TO ADJACENT AREAS.
  3. REMOVE EXCESS SOIL FROM TOP OF ROOT BALL TO EXPOSE ROOT FLARE PRIOR TO PLANTING TO ENSURE THAT THE BASE OF THE FLARE IS FLUSH WITH ADJACENT GRADE AND PLUMB IN ALL DIRECTIONS.
  4. DO NOT USE TREE WRAP. REMOVE TREE WRAP OR CARDBOARD TUBING FROM ALL TREE TRUNKS. DO NOT LEAVE MATERIALS IN THE TREE PIT.
  5. STAKE TREES OVER 2" CAL, SET STAKES PLUMB AND AT SAME HEIGHT. PLACE STAKES ON SIDEWALK AND ROADWAY SIDES OF TREE.
  6. WHERE PLANTING SOIL MEETS UNDISTURBED SOIL, SCARIFY SIDES AND BOTTOM OF TREE PIT UP TO THE BOTTOM OF ROOTBALL.
  7. PLANTING SOIL SHALL BE A MINIMUM DEPTH OF 3'-0" UNLESS OTHERWISE SPECIFIED.
  8. DO NOT USE THE TRUNK OF THE TREE AS A LEVER IN POSITIONING OR MOVING THE TREE. LEAVE NURSERY/CONTRACTOR SEAL IN PLACE.
  9. PRIOR TO MULCHING, LIGHTLY TAMP SOIL AROUND ROOT BALL IN 6" LIFTS TO BRACE TREE. DO NOT OVER COMPACT. WHEN PLANTING HOLE HAS BEEN BACKFILLED, POUR WATER AROUND ROOT BALL TO SETTLE THE SOIL.
  10. INSTALL TREE PROTECTION, WHERE REQUIRED, AS SHOWN ON TREE PROTECTION DETAILS.



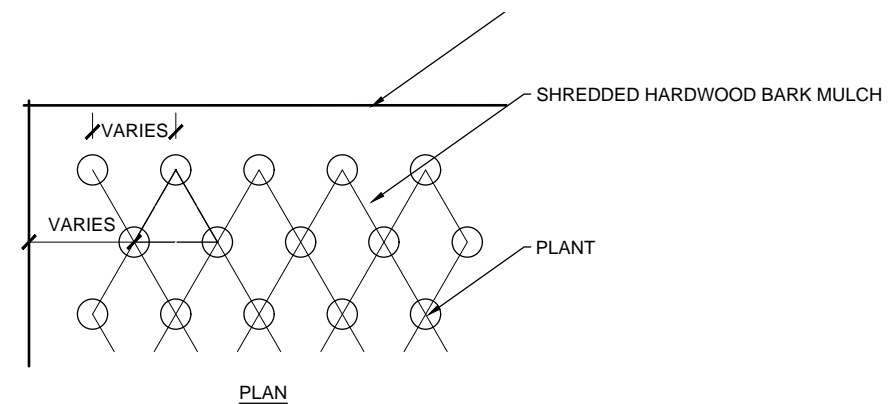
- NOTES:**
1. REMOVE ROOT BALL CONTAINER. SET TOP OF BALL 3" ABOVE FINISH GRADE.
  2. SCARIFY EDGES OF PLANTING PIT.

2 CONTAINER SHRUB PLANTING  
SCALE: 1/2" = 1'-0"



- NOTES:**
1. PLANT SPACING AS PER PLANTING PLAN AND PLANT SCHEDULE.
  2. REMOVE CONTAINER BEFORE PLANTING.
  3. SCARIFY SIDES OF PERENNIAL ROOT BALL.

### 3 PERENNIAL PLANTING



- NOTES:**  
1. REFER TO PLANT SCHEDULE FOR SPACING.

#### 4 PLANT SPACING FOR SAME CONTAINER SIZE



Perspective

