



Office of
Children and Families

CITY OF PHILADELPHIA

YEAR IN REVIEW

2020

SAFE CHILDREN & YOUTH

SUPPORTED ADULTS & FAMILIES

STRONG SCHOOLS & COMMUNITIES

MARCH 2021 phila.gov/families

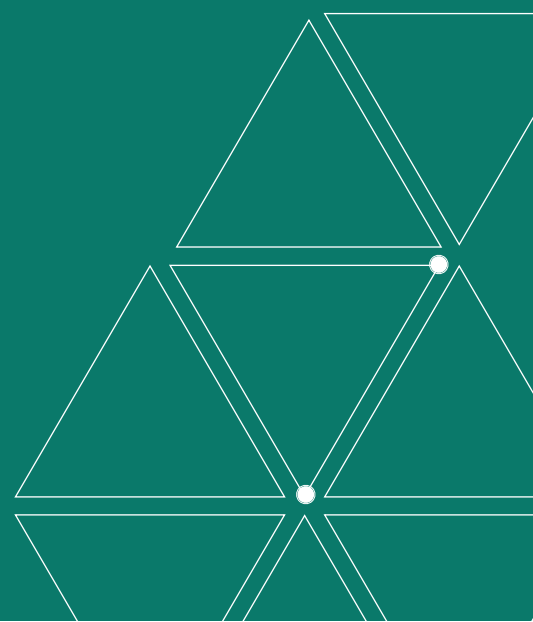


THE OFFICE OF CHILDREN AND FAMILIES

OUR COMMITMENT

To improve outcomes for all Philadelphia's children, families, and adults and to nurture a vision where children are safe, families are supported, and communities have access to great schools, libraries, recreation, and public spaces in every neighborhood.

LETTER FROM THE DEPUTY MAYOR



Dear Philly,

When we launched the Office of Children and Families (OCF) on January 6, 2020, we did so with the intent and determination that no single support, program, or resource on its own can ensure the health, education, and well-being of Philadelphia's children and families. By working to coordinate and strengthen all City operations, policies, and prevention services for the region's children and families, the creation of OCF solidified our administration's deep commitment to ensure children, families, and communities are connected to resources.

Two months after OCF formed, the COVID-19 pandemic hit the city, abruptly transforming our daily lives and creating new, urgent challenges to address. The pandemic fast-tracked opportunities to work creatively across systems to develop innovative ways to help meet the needs of Philadelphia's children, youth, families, and adults. As many programs transitioned to virtual, our office helped lead the City's pandemic response in the areas of emergency food distribution and coordinated childcare for essential workers during the first months of the pandemic. In the months thereafter, OCF led the City's summer programming and created Access Centers to support families during digital learning time.

The historic challenges of OCF's first year fueled us to prioritize partnerships that connect communities to support services for families to thrive and all children to grow up safe, healthy, and prepared. The extraordinary times in our diverse city have also been met with great tenacity, teamwork, and renewed hope in reimagining a more inclusive and equitable future for all. As we enter our second year, we will use these collaborations and the lessons we've learned to help Philadelphia's families and communities continue to move forward and prosper. In sharing our work, vision, and data, we invite you to travel on this ongoing journey with us.

In Service,

A handwritten signature in blue ink that reads "Cynthia F. Figueroa". The signature is fluid and cursive, with the first name "Cynthia" being the most prominent part.

Cynthia F. Figueroa
Deputy Mayor

WHAT WE DO

The Office of Children and Families (OCF) aligns the City's policies, resources, and services for children, families, and adults.

Our priorities are:

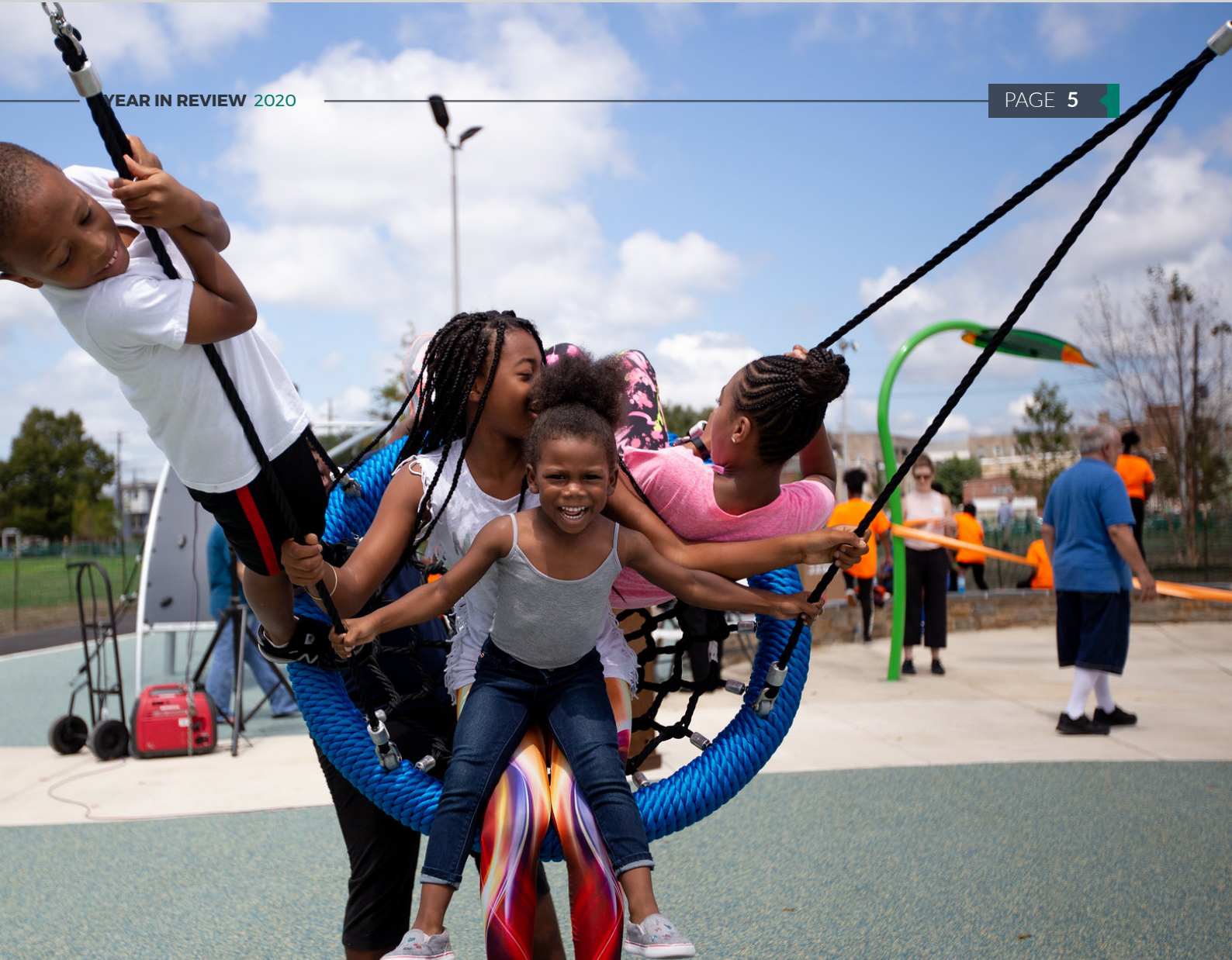
- Safe children & youth
- Supported adults & families
- Strong schools & communities



Departments & Programs

OCF administers a number of departments and programs, including:

- **Philadelphia Department of Human Services (DHS)**
 - Child welfare
 - Juvenile Justice
 - Prevention and Intervention Services
- **Free Library of Philadelphia**
- **Philadelphia Parks & Recreation**
- **Children and Youth Programming**
 - Out-of-School Time Programs for Children and Youth
 - Youth Workforce Development
 - Philly Reading Coaches
- **Education**
 - PHLpreK (the City's free, quality pre-K program for three- and four-year-olds)
 - Community Schools
 - School Attendance Support
 - Adult Education & Literacy Services
 - KeySpots
- **Pandemic Response**
 - Food Access
 - Access Centers



OCF has an unwavering principle that regardless of identity or background, every life is valuable. By investing in the people, places, and environments on which they depend, children, families, and adults will have the support they need to reach the full potential.

THE OFFICE OF CHILDREN AND FAMILIES' PRIORITIES ARE TO PROMOTE:

Supported adults & families

OCF works to support families to safely care for children. This is the foundation for multiple areas of work under the Office of Children and Families. Free Out-of-School Time programs, summer camps, WorkReady youth job opportunities, and PHLpreK are all programs that improve children's readiness for academic success while allowing caregivers to maintain steady employment.

Safe children & youth

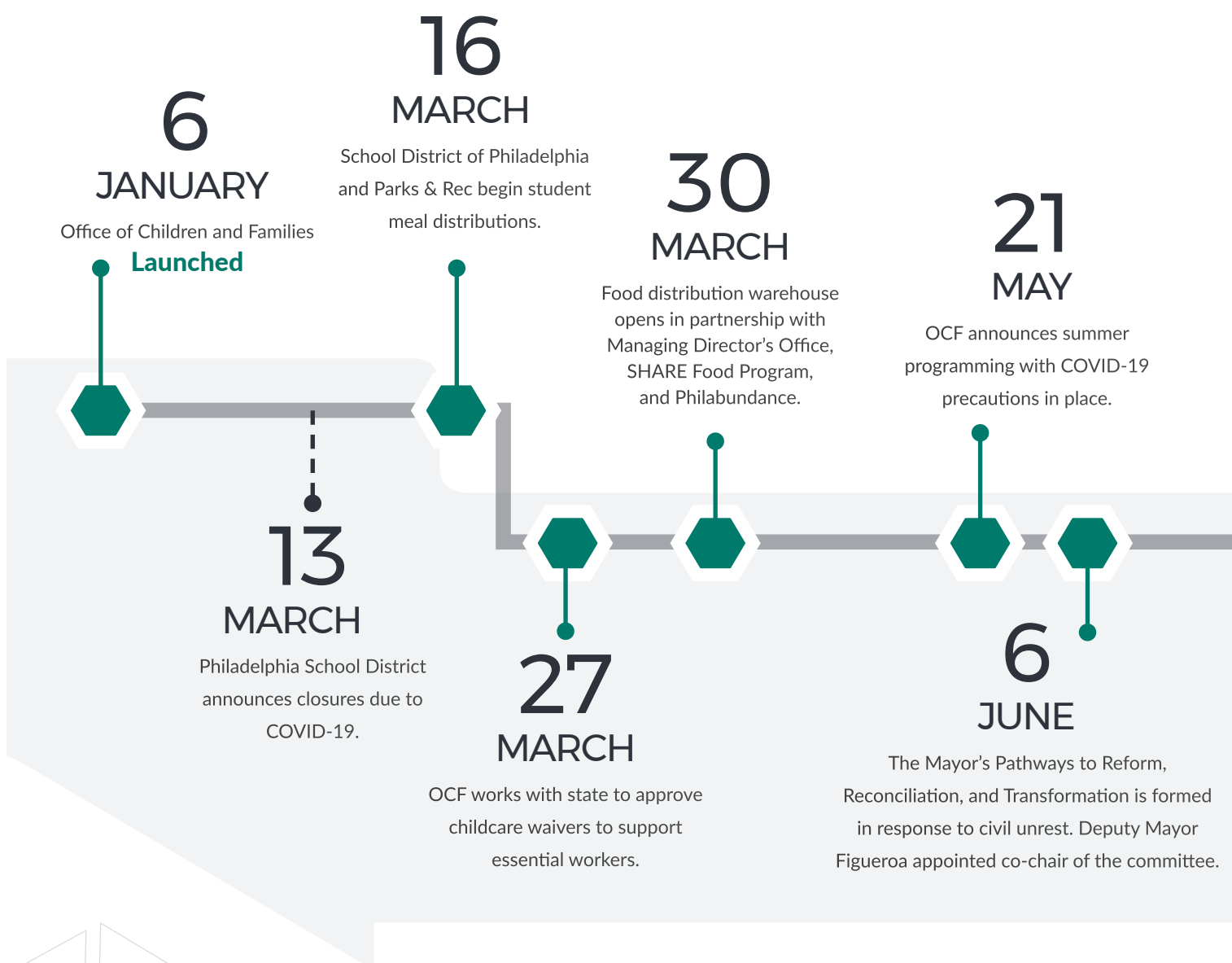
OCF works to ensure that children are safe in their homes. The City's Department of Human Services responds to reports of child abuse and neglect, answers the child abuse hotline, and manages in-home supports as well as foster care services. DHS also provides services for youth in the juvenile justice system.

Strong schools & communities

Philadelphia's public parks, recreation centers, and libraries support strong communities. In partnership with the School District of Philadelphia, the Office of Children and Families works to ensure quality support services and resources for children, families, and the community.

YEAR IN REVIEW

In response to the COVID-19 pandemic, OCF immediately adapted and organized to support children, families, adults, and communities across the region.





1
JULY

Adult Education and Literacy Services joins OCF.

8
SEPTEMBER

Access Centers open as safe spaces for K-6 graders during digital learning time.

9
NOVEMBER

Philadelphia Parks & Rec and Free Library of Philadelphia join OCF.



6

AUGUST

City announces PHLConnected, connecting up to 35,000 K-12 student households with free internet service.



21

SEPTEMBER

Access Centers expand to serve more students.

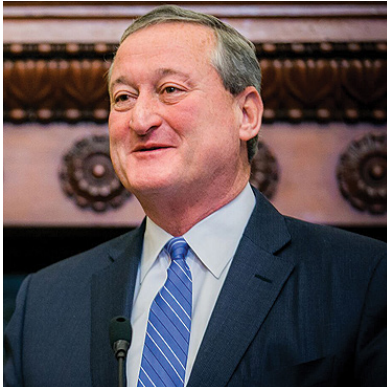


15

DECEMBER

OCF begins free, online adult education classes.

OUR HISTORY



JAMES KENNEY
MAYOR, CITY OF PHILADELPHIA

“The profound success of PHLpreK and Community Schools has not only changed the way the City delivers programs for children and families but also how we partner with the School District. The Office of Children and Families will work to keep more kids safe, build stronger families, and increase support for our city’s schools.”

-Mayor Jim Kenney

On January 6th, 2020, Mayor Jim Kenney established the Office of Children and Families (OCF), upholding a longstanding commitment of the City of Philadelphia to support the lives of all children and families.

OCF bolsters the Mayor’s priorities to provide fair opportunities, increase life chances, and expand resources, services, and programming. In spearheading several education-centered initiatives throughout the city, including PHLpreK and Community Schools, these programs have continually engaged children and youth throughout the city to improve overall life outcomes. OCF bolsters this commitment, offering a coordinated, strategic response to services for children, families, and adults.

The COVID-19 pandemic elevated OCF’s work and responsibilities. OCF led several of the City’s emergency pandemic response efforts related to its priority of strategic, coordinated efforts among city departments, systems, and stakeholders. This included: food access, childcare, summer programming, child safety, and support for schools during digital learning time. The addition of Philadelphia Parks & Recreation and the Free Library of Philadelphia to OCF in November 2020 further aligned programs and policies to better serve children, youth, families, and adults.

BY THE NUMBERS 2020



CHILDREN & YOUTH PROGRAMMING:

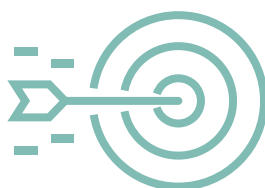
- **2,900** enrolled in summer 2020 Out of School Time.
- **6,110** youth participated in summer 2020 WorkReady.
- **3,300** PHLpreK seats.¹
- More than **4,300** Community School students and families served through Coordinator supported events and resource distributions.
- **> 2 million** meals for children through summer meals.
- **350** Parks & Rec Playstreets.
- Over **150** students receiving one-on-one literacy support through Philly Reading Coaches.

CHILD WELFARE & JUVENILE JUSTICE²

- **6,685** children from 2,935 families served by DHS diversion programs like Family Empowerment Services and Rapid Service Response.
- **23%** fewer open cases with DHS compared to 2016 as strategies to right-size the system prove effective.
- **85%** of children in foster care live within 10 miles of their home.
- Congregate care placements continued to decrease:
 - **50%** decrease in dependent congregate care since 2016.
 - **83%** decrease in delinquent congregate care since 2016.
- Over **650** youth at risk for dependent or delinquent DHS involvement referred to Intensive Prevention Services and nearly 3 in 5 enrolled in services.



PANDEMIC RESPONSE



- **1,881** students in Access Centers³.
- **140** childcare waivers were approved to serve children of essential workers.
- **10 million** pounds of food through food distribution sites⁴.
- **7 million** meals through school-based meal sites in partnership with the School District of Philadelphia⁵.

¹September 2019-June 2020

²July 1, 2019-June 30, 2020

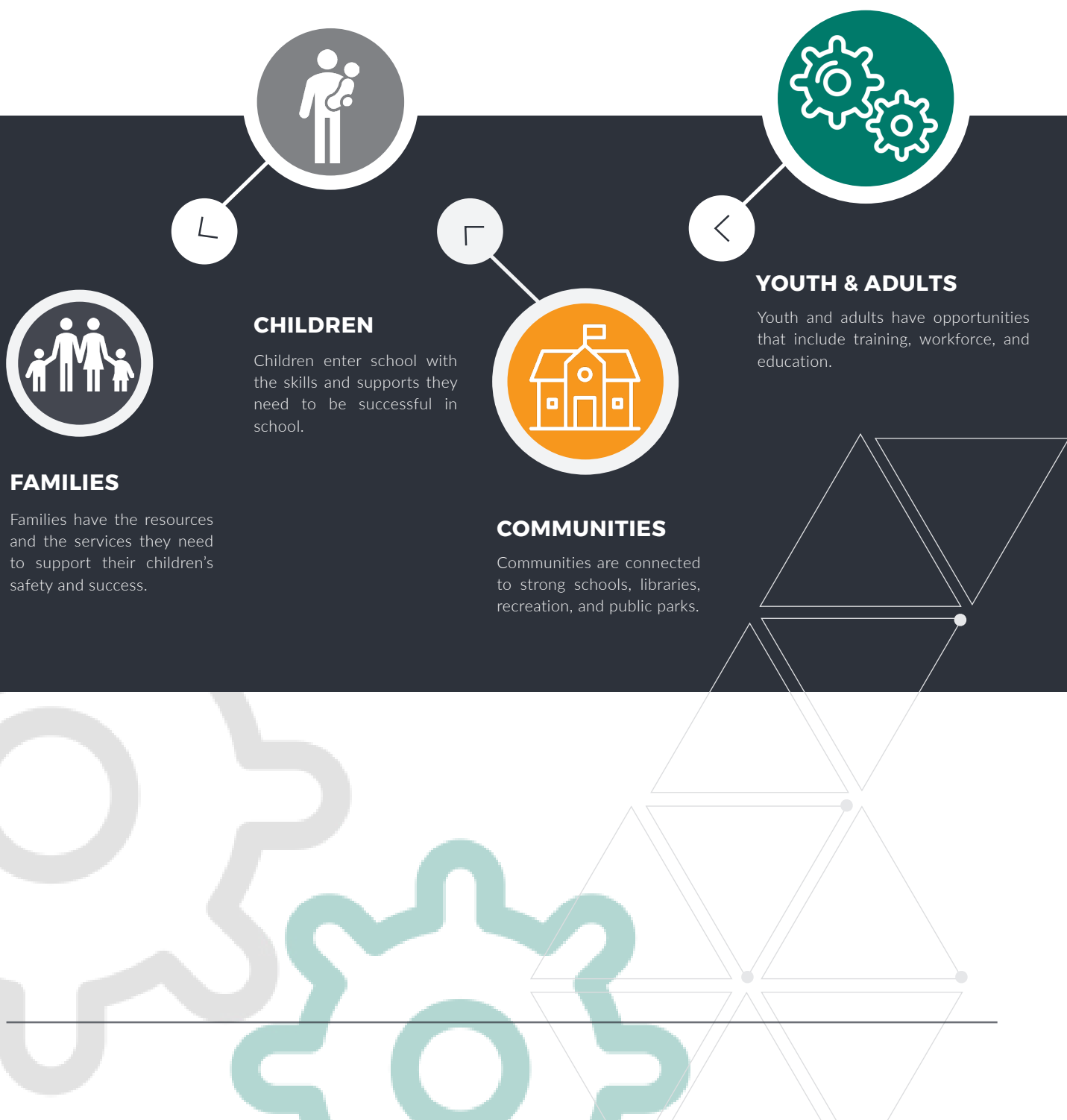
³As of December 2020

⁴March-August 2020

⁵March-December 2020

ALIGNING PROGRAMS AND POLICIES

The Office of Children and Families strives to build strong communities through coordinating across services, resources, and policies. Here's a quick look at a few of our goals.





EQUITABLE COMMUNITIES

Stick with Us!

We're excited about 2021 and continuing to support the children, youth, adults and public spaces that make Philadelphia great. Stay up to date on the latest news, events, and programming from OCF.

**To learn more
and sign up for
updates from OCF:**
phila.gov/families

The Office of Children and Families was built on the philosophy that supports, resources, and services that must work together to ensure that children and families are given the best possible chances to thrive. OCF responds, addresses, and adapts to diverse communities' needs, in order to better protect every child, support every public school, serve every family, and provide equitable access to the City's parks, recreation centers, and libraries.

Here are a few ways the Office has been working to support communities this year:

■ EMERGENCY RESPONSE

- Childcare waivers
- Food access
- Access Centers

■ ACCESS

- Summer programming with COVID-19 in mind, while still supporting opportunities for youth and communities.
- Connecting communities with COVID-19 testing, food, and other tangible goods such as clothing through Community Schools.
- Working with PHLConnectED to ensure families with school-aged children have digital connection.
- Promoting safe access to parks and public spaces using COVID-19 safety signage, free PPE, and social distancing ambassadors.



phila.gov/families

