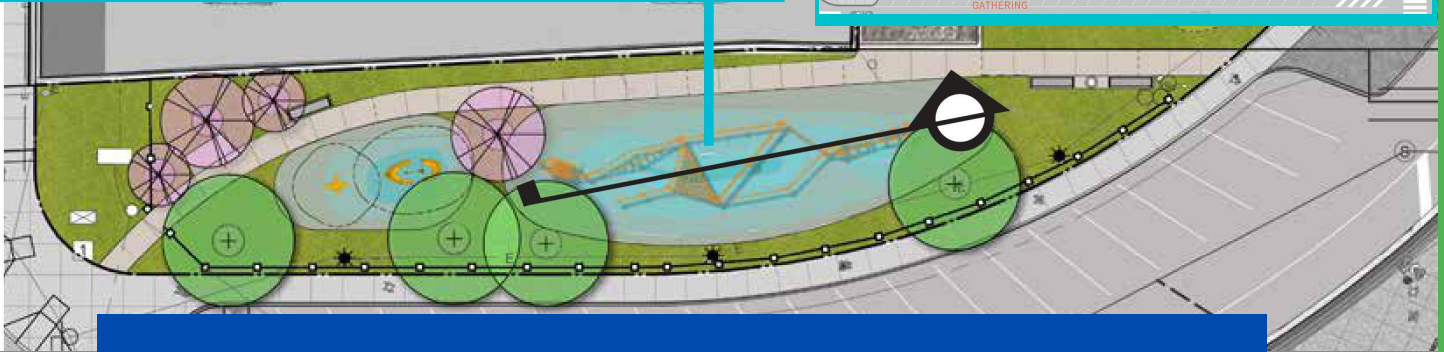
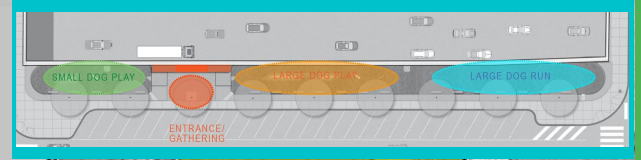


CONSTRUCTION UNDERWAY!



WINTER STREET GREENWAY PLAYSPACE & DOG RUN

The Project

Thanks to the dedication of residents and the support of Council President Darrell L. Clarke, construction will begin soon on the Winter Green Playscape and Dog Run .

The project includes:

A new playscape and safety surface with two sets of play equipment (for children ages 2-5 and those ages 5-12) .

A new dog park with synthetic dog turf and drinking fountains.

The project also includes site landscaping and new amenities like benches, trash and recycling receptacles, fencing, and trees.

What to Expect During Construction

Construction is expected to take place between late August, 2020 and early winter 2021.

The north side of Winter Street between North 22nd Street and the Benjamin Franklin Parkway may be closed to pedestrian traffic and parking during construction.

Expect periodic short-term road closures on Winter Street throughout construction.

A COVID-19 health and safety plan is in place.

Questions? Email parksandrecreation@phila.gov.

Thank you!

This project is made possible by:

Mayor James F. Kenney

City Council President

Darrell L. Clarke

The Logan Square Neighborhood Association

The Commonwealth of Pennsylvania's Keystone Community Program and Greenways Trails and Recreation Program

The Pennsylvania Department of Transportation

Philadelphia Parks & Recreation