

January 20th, 2021

Ms. Beige Berryman, AICP
City of Philadelphia Art Commission
One Parkway Building
1515 Arch Street, 13th Floor
Philadelphia, PA 19102

Sent by Email to:
artcommission@phila.gov

Dear Ms. Berryman,

Re: School District of Philadelphia: 2020/2021 Classroom Modernization projects

Vare-Washington Elementary School, 1198 S. 5th St. Philadelphia PA 19147

I am writing to request an Administrative Review by the Philadelphia Art Commission of the above classroom modernization project at the Vare-Washington Elementary School.

The proposed work is entirely on the interior of the building and provides for the modernization of fifteen classrooms in support of the District's Action Plan for improving reading outcomes for its elementary students. The work is comprised of new finishes, new cabinetry, new door hardware, and electrical, lighting, and technology upgrades for the fifteen classrooms. The School District's goal is to carry out construction of the project during this summer's recess.

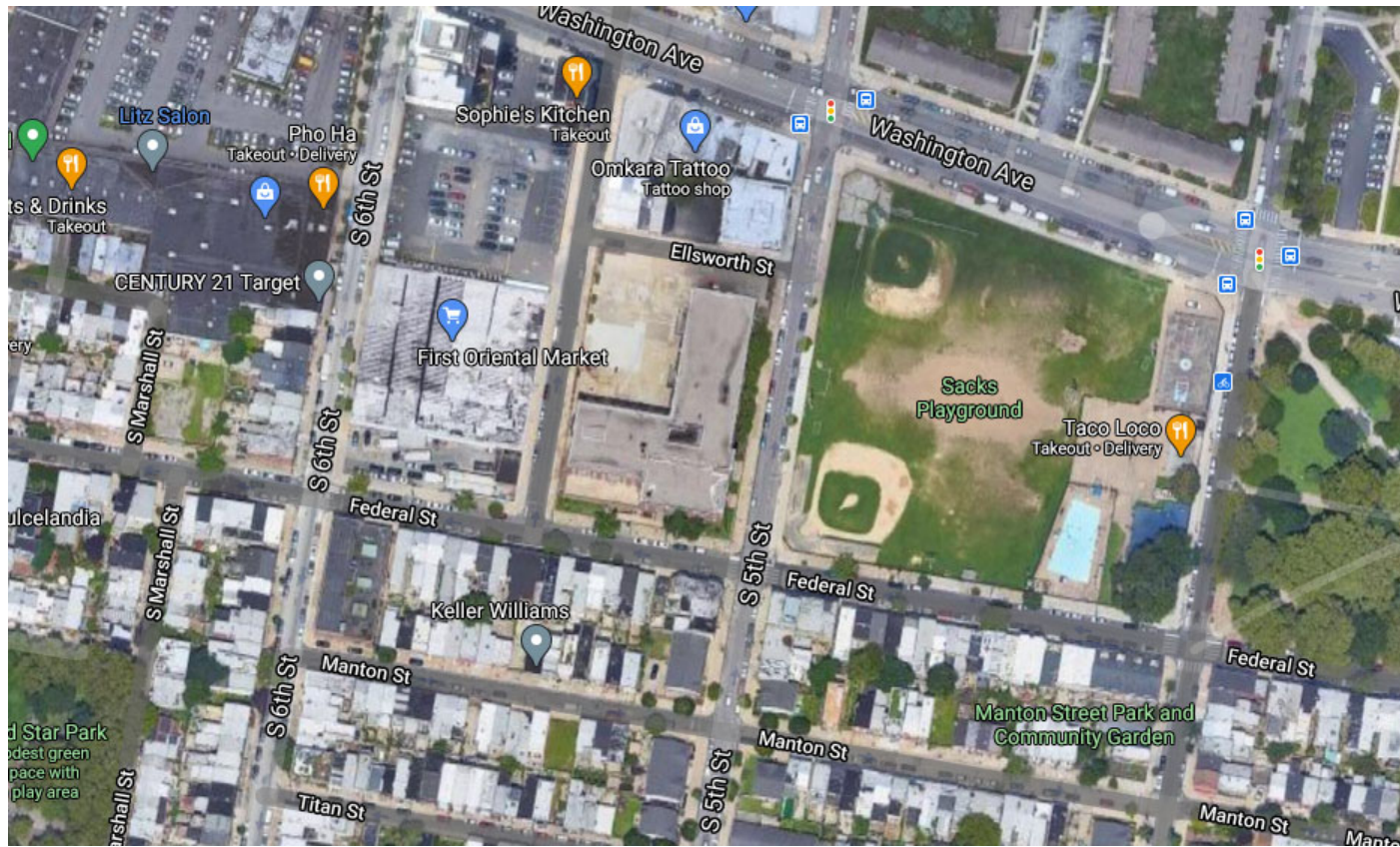
I have enclosed one set of 11x17 size architectural drawings describing the work in detail together with interior and exterior photographs each in digital PDF format.

Please let me know if there is any other information you require in order to perform your Administrative Review.

Sincerely,

Cory Neale
Project Manager, The Sheward Partnership
2300 Chestnut St.
Philadelphia, PA 19103
(215) 203-4032
cjn@tsparch.com

c.c. Gamil Hall, Project Manager, School District of Philadelphia
David Scheuermann AIA, Principal, The Sheward Partnership



AERIAL SITE PLAN

BIRD'S EYE VIEW FROM EAST



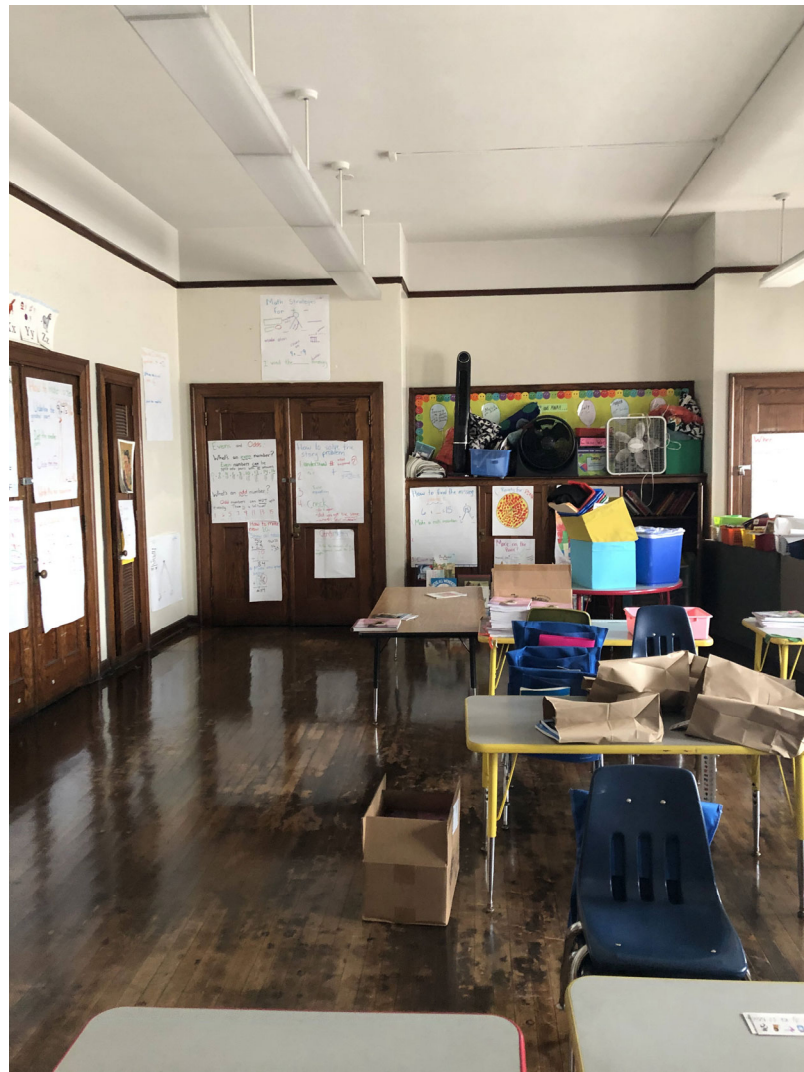


MAIN ENTRANCE OFF OF SOUTH 5TH STREET

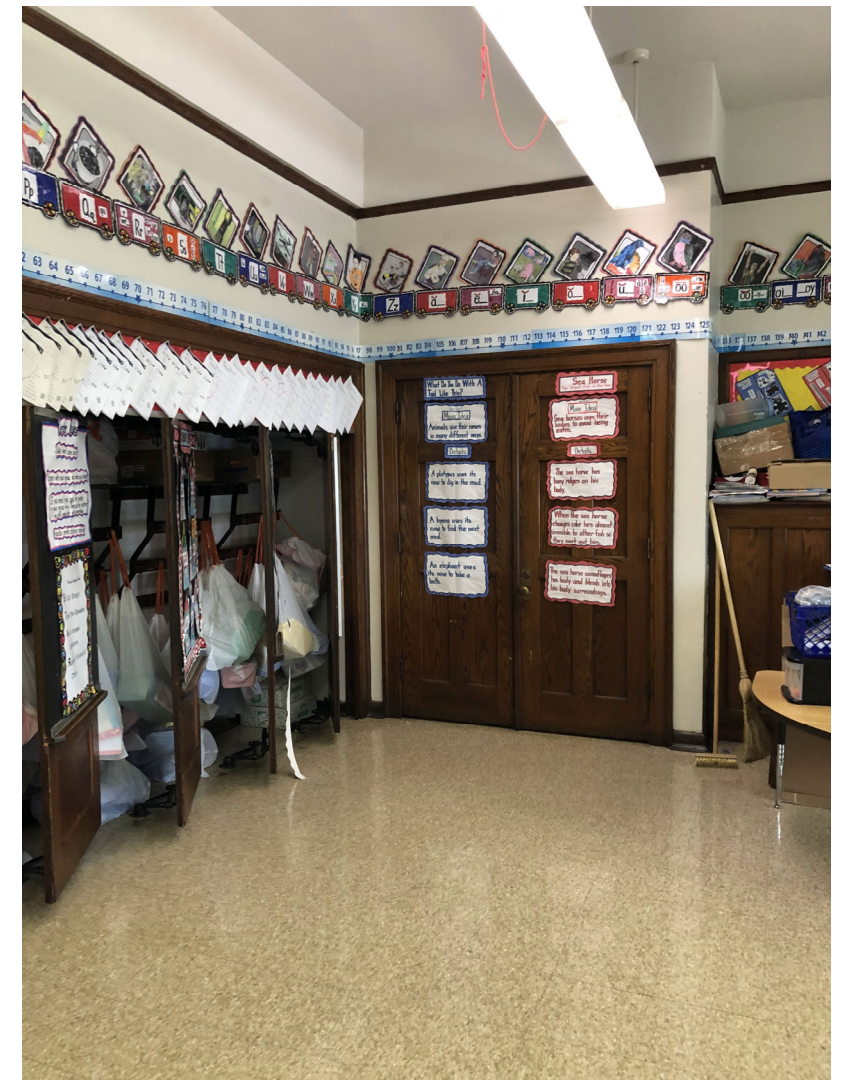
CORNER OF SOUTH 5TH STREET & FEDERAL STREET



TYPICAL EXISTING CLASSROOM INTERIORS



TYPICAL EXISTING CLASSROOM INTERIORS





THE SCHOOL DISTRICT OF PHILADELPHIA

VARE-WASHINGTON ELEMENTARY SCHOOL

1198 S. 5TH STREET, PHILADELPHIA, PA 19147

CLASSROOM MODERNIZATION

General Construction: SDP Project No. B-028 of 2020/2021

Plumbing: SDP Project No. B-029 of 2020/2021

Electrical: SDP Project No. B-030 of 2020/2021

Bid Drawings: January 25, 2021

OWNER

SCHOOL DISTRICT OF PHILADELPHIA
440 North Broad
Philadelphia, PA 19130-4015
Phone: 215-400-4740
Fax: 215-400-4731
Email: nward@philasd.org
Attn: Nicole Ward, Design Manager
Office of Capital Programs
www.philasd.org

DESIGN ARCHITECT TITLE

THE SHEWARD PARTNERSHIP
2300 CHESTNUT STREET
PHILADELPHIA, PA 19103
Phone: 215-751-9301
Fax: 215-751-9302
Email: gjc@sparch.com
Attn: Geoff Chalkley

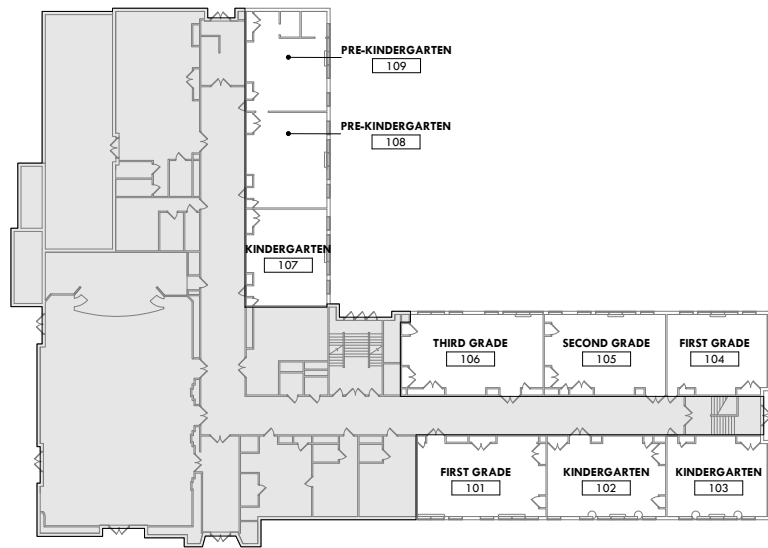
MEP ENGINEERS

PRINCETON ENGINEERING
101 Morgan Lane
Suite 205, Plainsboro, NJ 08536
Phone: 609-452-9700
Fax: 609-452-9701
Email:
Attn:

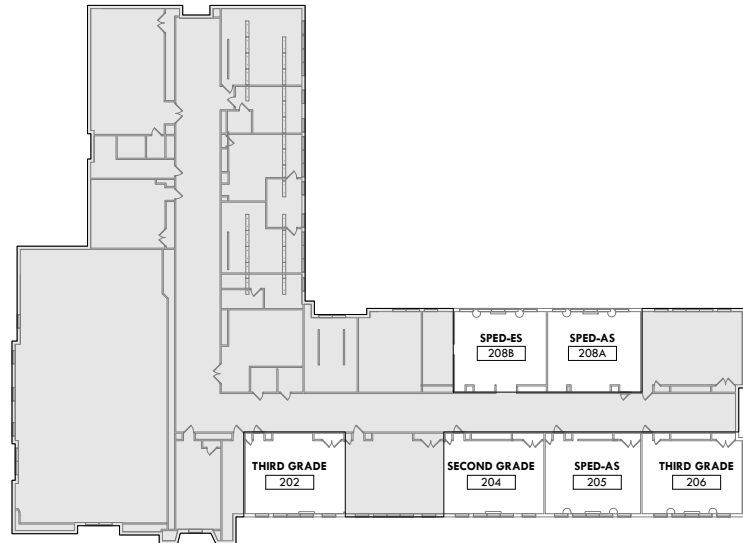
ABBREVIATIONS

AB	AIR BARRIER	IBS	INTERACTIVE PANEL BOARD
ABV	ABOVE	LT-WT CONC	LIGHT WEIGHT CONCRETE
ACT	ACOUSTICAL CEILING TILE	LVR	LOUVER
AFF	ABOVE FINISHED FLOOR	MACH	MACHINE
ALUM	ALUMINUM	MATL	MATERIAL
APPROX	APPROXIMATELY	MAX	MAXIMUM
ARCH	ARCHITECTURAL	MAS	MASONRY
BM	BEAM	MECH	MECHANICAL
BLDC	BLUDDING	MIN	MINIMUM
BLDG	BUILDING	MTD	MOUNTED
BO	BOTTOM OF	MTL	METAL
CFMF	COLD FORMED METAL FRAMING	N/A	NOT APPLICABLE
CLG	CEILING	NC	NOT IN CONTRACT
CHAN	CHANNEL	NO	NUMBER
CP	CAST-IN-PLACE	NTS	NOT TO SCALE
CJ	CONTROL JOINT	OC	ON CENTER
CAU	CONCRETE MASONRY UNIT	OH	OPPOSITE HAND
COL	COLUMN	PLAM	PLASTIC LAMINATE
CONC	CONCRETE	PLUMB	PLUMBING
CONT	CONTINUOUS	PT	PAINT OR PRESERVATIVE TREATED
CJ	CONDENSING UNIT	PTD	PAINTED
DA	DAMETER	RS	RSERS
DM	DIMENSION	RD	ROOF DRAIN
DK	DOWN	RF	ROOF
DN	DOWN	RM	ROOM
DR	DOOR	SM	SIMILAR
DTL	DETAIL	SOH	SIMILAR OPPOSITE HAND
DWGS	DRAWINGS	SS	STAINLESS STEEL
EL	ELEVATION	SSM	SOLID SURFACE MATERIAL
ELEC	ELECTRICAL	STL	STEEL
EQUIP	EQUIPMENT	STR	STRUCTURAL
EXP JT	EXPANSION JOINT	SUSP	SUSPENDED
FE	FIRE EXTINGUISHER	T	THREAD
FIN	FINISH	TG	TEMPERED GLASS
FIXT	FIXTURE	THK	THICK
FD	FLOOR DRAIN	THK	TO MATCH EXISTING
FUR	FLOOR	TO	TOP OF
FRMG	FRAMING	TO	TOP OF
FRT	FIRE-RETARDANT TREATED	TYP	TYPICAL
GA	GAUGE	UNO	UNLESS NOTED OTHERWISE
GALV	GALVANIZED	UL	UNDERWRITER LABORATORY
QWR	CYTRISM WALLBOARD	VB	VINYL BASE
HC	HANDICAPPED	VCT	VINYL COMPOSITE TILE
HOW	HARDWARE	VERT	VERTICAL
HP	HIGH POINT	VF	VERIFY IN FIELD
HM	HOLLOW METAL	VP	VISION PANEL
HR	HOUR	W	WITH
HSS	HOLLOW STRUCTURAL SECTION	WD	WOOD
HT	HEIGHT	W/O	WITHOUT
IAW	IN ACCORDANCE WITH	WP	WEATHERPROOF
INFO	INFORMATION	WPG	WATERPROOFING
INSUL	INSULATION/INSULATED	WRB	WATER-RESISTIVE BARRIER

KEY PLAN



FIRST FLOOR



SECOND FLOOR

SYMBOLS

	CALLOUT REFERENCE
	BUILDING SECTION REFERENCE
	WALL SECTION REFERENCE
	DETAIL REFERENCE
	GRID LINE
	LEVEL
	SPOT ELEVATION
	MATCHLINE
	EXTERIOR ELEVATION
	INTERIOR ELEVATION
	ROOM NAME AND NUMBER
	DOOR NUMBER
	PARTITION TYPE TAG
	WINDOW TYPE TAG
	FRAME TYPE TAG
	REVISION

DRAWING LIST

DRAWING NO.	SHEET NAME	SHEET
G000	COVER SHEET	01 OF 22
G100	GENERAL NOTES, SYMBOLS, AND ABBREVIATIONS	02 OF 22
G101	KEY PLANS	03 OF 22
AD100	ENLARGED DEMOLITION PLANS	04 OF 22
AD101	ENLARGED DEMOLITION PLANS	05 OF 22
A100	ENLARGED NEW WORK PLANS	06 OF 22
A101	ENLARGED NEW WORK PLANS	07 OF 22
A200	ENLARGED REFLECTED CEILING PLANS	08 OF 22
A201	ENLARGED REFLECTED CEILING PLANS	09 OF 22
A300	CASEWORK DETAILS	10 OF 22
A301	INTERIOR ELEVATIONS	11 OF 22
A302	INTERIOR ELEVATIONS	12 OF 22
A303	INTERIOR ELEVATIONS	13 OF 22
A600	ENLARGED FINISH PLANS	14 OF 22
A601	ENLARGED FINISH PLANS	15 OF 22
A602	DOOR SCHEDULE AND DETAILS	16 OF 22
E001	COVER SHEET	17 OF 22
ED101	FIRST FLOOR DEMOLITION PLAN	18 OF 22
ED102	SECOND FLOOR DEMOLITION PLAN	19 OF 22
E101	FIRST FLOOR POWER & SYSTEMS PLAN	20 OF 22
E102	SECOND FLOOR POWER & SYSTEMS PLAN	21 OF 22
P101	FIRST FLOOR PLUMBING DEMO AND NEW PLAN	22 OF 22

CLASSROOM MODERNIZATION VARE WASHINGTON 1198 S 5TH STREET Philadelphia, PA 19147



OFFICE OF CAPITAL PROGRAMS

440 NORTH BROAD STREET
PHILADELPHIA, PA 19130 - 4015
(215) 400 - 4730 | (215) 400 - 4731 (fax)
www.philad.org

SEAL:

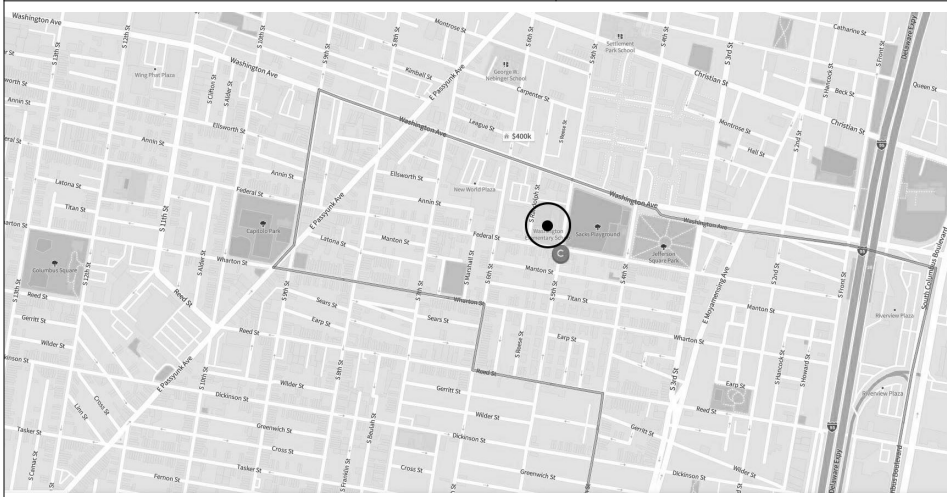
NAME (LICENSED PROFESSIONAL) DATE
STATE AND LICENSE NO. XXXX/20XX

THE SHEWARD PARTNERSHIP, LLC
1111781-0001 2300 Columbia Street
Philadelphia, PA 19103
1-215-751-9302



PRINCETON ENGINEERING SERVICES, PC
101 Morgan Lane - Suite 205, Plainsboro, NJ 08536
1-609-452-9700 www.princetonengineering.com

LOCATION PLAN



PROJECT GENERAL NOTES

- THE PLUMBING WORK SHOWN ON "P" SHEETS SHALL BE UNDER THE GENERAL CONSTRUCTION CONTRACT.
- ABATEMENT - ABATEMENT WITHIN SCOPE SHALL BE CARRIED OUT UNDER THE GENERAL CONTRACT AND IN ACCORDANCE WITH THE SDP ENVIRONMENTAL SPECIFICATIONS. WHERE ASBESTOS CONTAINING PIPE INSULATION IS ABATED PROVIDE UPON COMPLETION OF THE ABATEMENT EQUIVALENT JACKETED FIBERGLASS PIPE INSULATION, JOHNS MANVILLE MICRO-LOK OR EQUAL WITH PVC COLLAR AND ESCUTCHEON AT FLOORWALL/CEILING PENETATIONS.
- MOCK-UPS: AT LOCATION AS AGREED BY THE ARCHITECT PROVIDE MOCK-UPS OF THE FOLLOWING FOR THE ARCHITECT'S REVIEW AND APPROVAL:
 - A. UNIT VENTILATOR COVER REFINISHING
 - B. WOOD DOOR REFINISHING
 - C. WOOD FLOOR REFINISHING

MOCK-UPS SHALL NOT BE LESS THAN 100 SF IN AREA OR COMPRISED OF 2 OF EACH TYPE. APPROVED MOCK-UPS MAY REMAIN IN PLACE.
- REPAIR ALLOWANCES: IN EACH CLASSROOM IN THE PROJECT SCOPE ALLOW FOR REPAIRS AS FOLLOWS:
 - A. PATCH AND REPAIR PLASTER WALLS AND CEILINGS - ALLOW FULL RE-PLASTER AND PAINT OF THE FOLLOWING ROOMS: 101, 102, ALLOW 200 SF WALL TREATMENT AND 300 SF CEILING TREATMENT FOR ALL OTHER CLASSROOMS
 - B. FIBERGLASS PIPE INSULATION - REPLACE DAMAGED FIBERGLASS PIPE INSULATION WITH NEW JACKETED INSULATION TO MATCH EXISTING, JOHNS MANVILLE MICRO-LOK OR EQUAL. INCLUDE 40 LF INSULATION, 30LF PVC COLLAR, AND SIX (6) ESCUTCHEONS PER CLASSROOM IN SMALL NON-CONTIGUOUS AREAS

LOCATION OF REPAIRS SHALL BE AT THE DIRECTION OF THE OWNER'S REPRESENTATIVE.

QUANTITIES INDICATED ON THIS DRAWING ARE APPROXIMATE ESTIMATES. ACTUAL QUANTITIES MUST BE VERIFIED IN THE FIELD BY THE BIDDER/CONTRACTOR. MINOR VARIATIONS IN THE ACTUAL QUANTITIES, EITHER MORE OR LESS THAN THE ESTIMATED QUANTITIES WILL NOT BE GROUNDS FOR CHANGE ORDERS.
- CONTRACTOR IS RESPONSIBLE FOR DUMPSTERS TO PROPERLY DISPOSE OF EXISTING INTERACTIVE DISPLAY PANEL BOARDS.

BUILDING CODE NOTES

APPLICABLE CODES:
2015 PHILADELPHIA BUILDING CONSTRUCTION & OCCUPANCY CODE
- INCORPORATING FOLLOWING ICC CODES WITH LOCAL MODIFICATIONS
2018 INTERNATIONAL BUILDING CODE
2015 INTERNATIONAL BUILDING CODE - CHAPTER 11 / APPENDIX E
2015 INTERNATIONAL EXISTING BUILDING CODE
2018 INTERNATIONAL ENERGY CONSERVATION CODE
2009 INTERNATIONAL FIRE CODE WITH 2010 PHILADELPHIA FIRE CODE AMENDMENTS AND REGULATIONS
2017 NATIONAL ELECTRIC CODE (NFPA 70)
2004 PHILADELPHIA PLUMBING CODE

BUILDING CONSTRUCTION:
STRUCTURE: CONCRETE FRAME, PRECAST CONCRETE FLOORS
ROOF: CONCRETE DECK
EXTERIOR WALLS: MASONRY CAVITY WALL
INTERIOR PARTITIONS: MASONRY

BUILDING HEIGHT: 3 STORIES
BUILDING AREA: 119,250 SF

OCCUPANCY: GROUP E - EDUCATION
OCCUPANT LOAD: 388 STUDENTS

FIRE PROTECTION: FIRE ALARM

CLASSIFICATION OF WORK: ALTERATION - LEVEL 1 [IEBC CHAPTER 7]

INTERIOR FINISHES
WALLS & CEILINGS: CLASS C - FLAME SPREAD INDEX 76-200 [IBC TABLE 803.9 - ROOMS]
FLOORING: EXEMPT MATERIALS: RESILIENT TILE [IBC SECTION 804]
DECORATIVE TRIM: CLASS C - FLAME SPREAD INDEX 76-200 [IBC SECTION 806]

BID DRAWINGS JANUARY 25, 2021

10	
9	
8	
7	
6	
5	
4	
3	
2	
1	1/25/21 BID DRAWINGS
NO.	DATE REVISION

SCHOOL & LOCATION
**VARE-WASHINGTON
ELEMENTARY SCHOOL**
1198 S. 5TH ST.
PHILADELPHIA, PA 19147

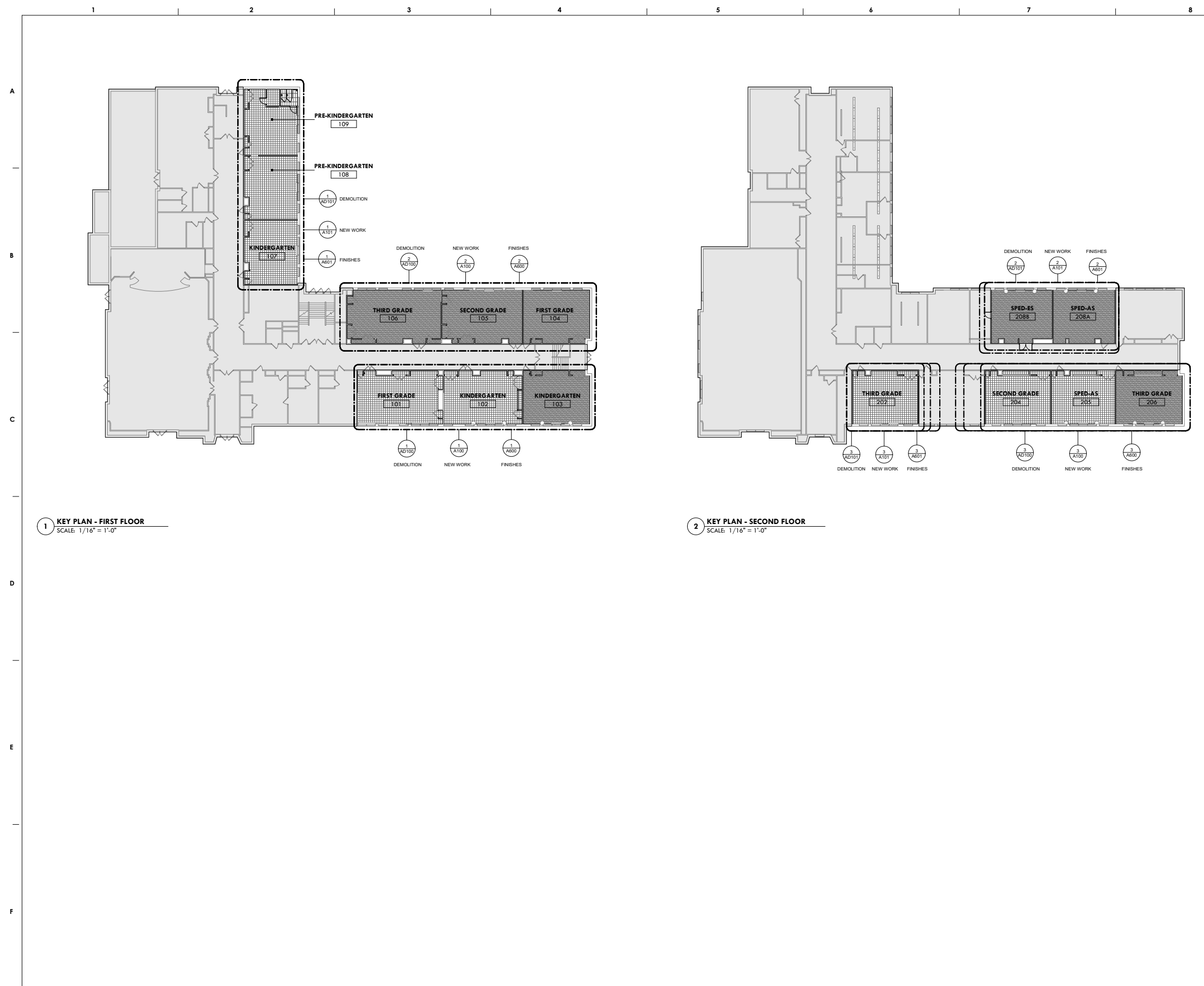
PROJECT TITLE
CLASSROOM MODERNIZATION

DRAWING TITLE
**GENERAL NOTES, SYMBOLS,
AND ABBREVIATIONS**

DRAWING SCALE AS INDICATED	
LOCATION NO. XXXX	FILE NO. XXX
DRAWN BY ECN	CHECKED BY GJC
GC: 8-028	OF 2020 / 21
EC: 8-029	OF 2020 / 21
EC: 8-030	OF 2020 / 21

DRAWING NO.
G100

SHEET 2 OF 22



1 KEY PLAN - FIRST FLOOR
SCALE: 1/16" = 1'-0"

2 KEY PLAN - SECOND FLOOR
SCALE: 1/16" = 1'-0"

THE SCHOOL DISTRICT OF PHILADELPHIA
OFFICE OF CAPITAL PROGRAMS
440 NORTH BROAD STREET
PHILADELPHIA, PA 19130 - 4015
(215) 400 - 4730 | (215) 400 - 4731 (fax)
www.philacad.org

NAME (LICENSED PROFESSIONAL) DATE
STATE AND LICENSE NO. XXXX/20XX

THE SHEWARD PARTNERSHIP, LLC
1315 Locust Street, 23rd Floor
Philadelphia, PA 19102
Tel: 215.751.9300



PRINCETON ENGINEERING SERVICES, PC
101 Morgan Lane - Suite 205, Plainsboro, NJ 08536
Tel: 609.452.9700 www.princetonengineering.com

BID DRAWINGS
JANUARY 25, 2021

10		
9		
8		
7		
6		
5		
4		
3		
2		
1	1/25/21 BID DRAWINGS	
NO.	DATE	REVISION

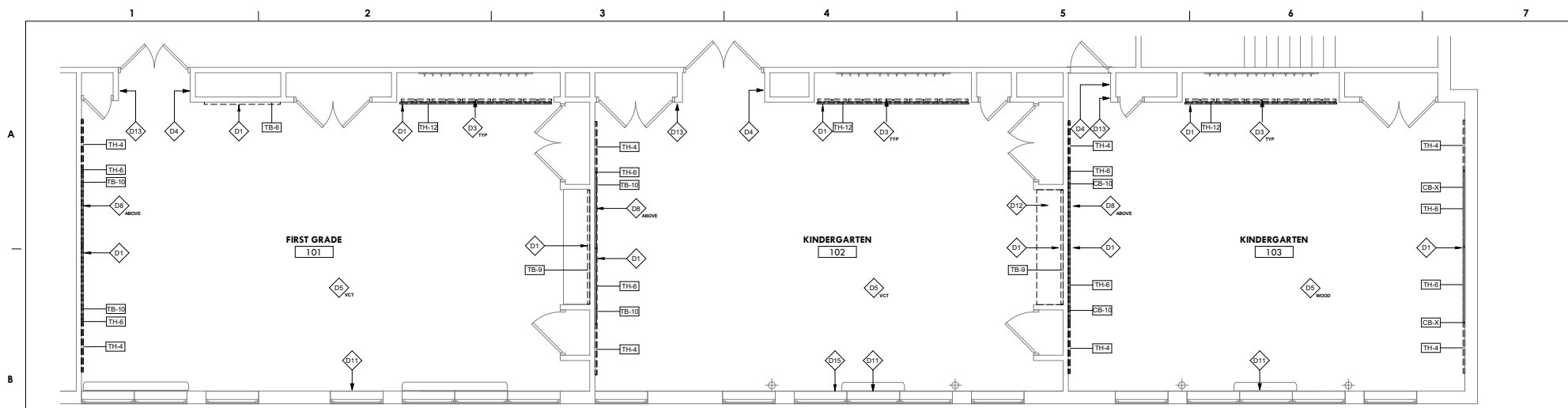
SCHOOL & LOCATION
VARE-WASHINGTON ELEMENTARY SCHOOL
1198 S. 5TH ST.
PHILADELPHIA, PA 19147

PROJECT TITLE
CLASSROOM MODERNIZATION

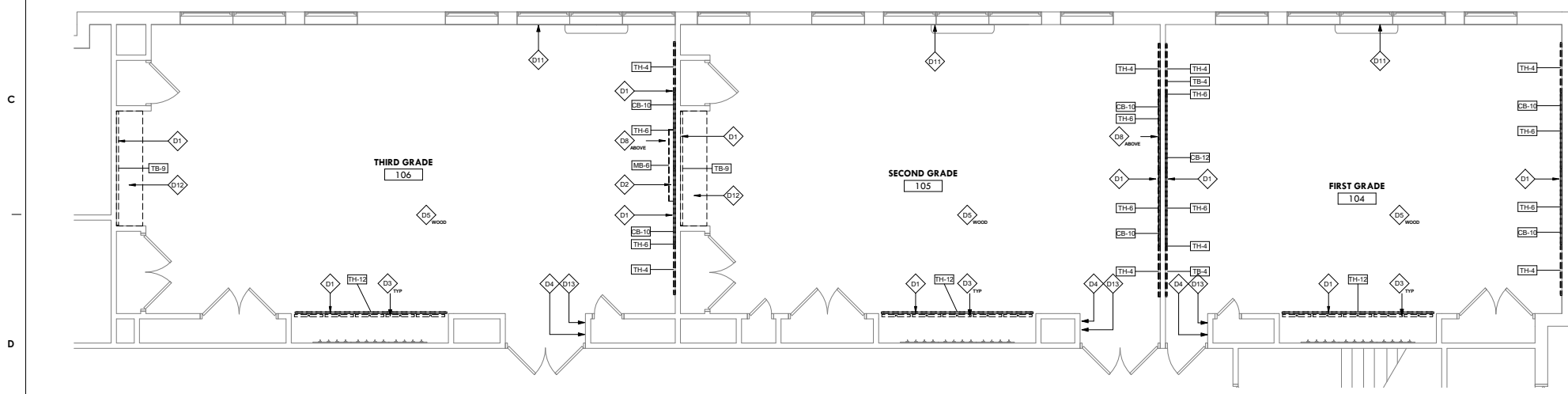
DRAWING TITLE
KEY PLANS

DRAWING SCALE AS INDICATED	
LOCATION NO. XXXX	FILE NO. XXXX
DRAWN BY ECN	CHECKED BY GJC
GC: 8-028 OF 2020 / 21	PC: 8-029 OF 2020 / 21
EC: 8-030 OF 2020 / 21	

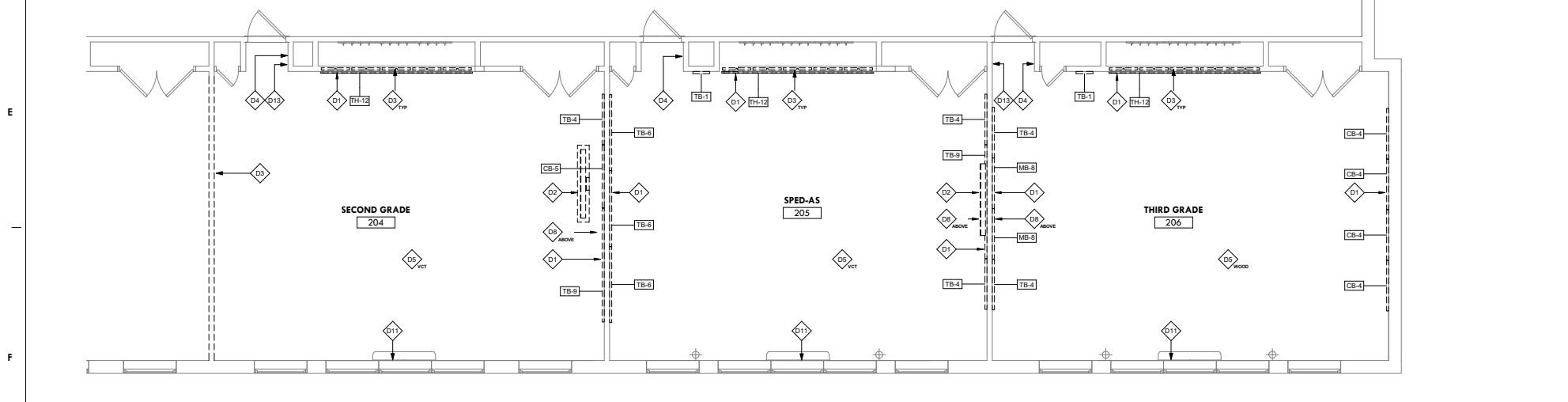
DRAWING NO.
G101
SHEET 3 OF 22



1 ENLARGED DEMOLITION PLAN - 101, 102, 103
SCALE: 1/4" = 1'-0"



2 ENLARGED DEMOLITION PLAN - 104, 105, 106
SCALE: 1/4" = 1'-0"



3 ENLARGED DEMOLITION PLAN - 204, 205, 206
SCALE: 1/4" = 1'-0"

DEMOLITION GENERAL NOTES

1. ALL EXISTING PARTITIONS ARE TO REMAIN U.N.O. OR SHOWN DASHED
2. DIMENSIONS ARE TO FACE OF WALL FINISH U.N.O.
3. THE CONTRACTOR SHALL DELIVER SALVAGED ITEMS TO THE SCHOOL DISTRICT OF PHILADELPHIA (SDP) AS DIRECTED.
4. DEMOLITION OF ALL WALL MOUNTED DISPLAY BOARDS, CHALKBOARDS, TACKBOARDS, ETC. SHALL BE CARRIED OUT BY THE ABATEMENT CONTRACTOR. SDP BELIEVES THAT THE ADHESIVE USED CONTAINS ASBESTOS.
5. THE G.C. OR AS NECESSARY, THE ABATEMENT CONTRACTOR SHALL CAREFULLY DISCONNECT AND TAKE DOWN ALL SMART BOARDS AND CEILING MOUNTED SMART PROJECTORS AND TURN OVER TO SDP AS SALVAGED EQUIPMENT
6. THE CONTRACTOR SHALL AT ALL WALL AND CEILING SURFACES TO REMAIN, PATCH OR FILL ALL VISIBLE EXISTING HOLES, CRACKS AND SIMILAR SURFACE DEFECTS. THE CONTRACTOR SHALL PATCH ANY DAMAGE DUE TO THE DEMOLITION WORK. PATCHING SHALL MATCH EXISTING ADJACENT FINISHES.
7. CONTRACTOR SHALL REMOVE ALL LOOSE PAINT, TAPE, ADHESIVE, BRACKETS, HOOKS, ETC., INCLUDING ANY ON THE WALLS AND CEILING ABOVE NEW ACT
8. REMOVE ALL UNUSED OR ABANDONED CONDUIT AND WIRE MOLD

THE SCHOOL DISTRICT OF PHILADELPHIA

OFFICE OF CAPITAL PROGRAMS
440 NORTH BROAD STREET
PHILADELPHIA, PA 19130 - 4015
(215) 400 - 4730 | (215) 400 - 4731 (fax)
www.philcad.org

SEAL:

NAME (LICENSED PROFESSIONAL) DATE
STATE AND LICENSE NO. XXXXX/20XX

THE SHEWARD PARTNERSHIP, LLC
1315781-0001 2300 Chestnut Street
1 215-751-9300 Philadelphia, PA 19103



PRINCETON ENGINEERING SERVICES, PC
101 Morgan Lane - Suite 205, Plainsboro, NJ 08536
1 609 452 9700 www.princetonengineering.com

DEMOLITION KEYNOTES

- D1 REMOVE INSERTS ON THIS WALL BOARD FRAMES TO REMAIN UNLESS SPECIFICALLY IDENTIFIED FOR REMOVAL. REMOVE INSERTS ONLY. FRAMES TO REMAIN UNLESS SPECIFICALLY IDENTIFIED OTHERWISE. SEE TYPE.
- CB-X CHALKBOARD
- MB-X MARKERBOARD
- TB-X TACKBOARD
- TH-X TACKBOARD HEADER
- CH-X COAT HOOKS, SHELVING, HARDWARE
*X INDICATES LENGTH, TYPE/SIZE V.L.F.
- D2 REMOVE AND SALVAGE EXISTING INTERACTIVE PANEL BOARD AND PROJECTOR. REMOVE ASSOCIATED MOUNTING EQUIPMENT
- D3 REMOVE EXISTING WOOD MOVABLE PARTITION WALL, INCL. ALL HEAD AND FLOOR-MOUNTED HARDWARE
- D4 REMOVE AND STORE TELEPHONE, TELEPHONE BOX FOR REINSTALLATION
- D5 EXISTING FLOORING AND BASE, TYPE:
VAT REMOVE VINYL ASBESTOS TILE, BY ABATEMENT CONTRACTOR
CT REMOVE CERAMIC TILE
VCT REMOVE VINYL COMPOSITION TILE
WDWOOD WOOD FLOOR TO REMAIN, REFINISH WOOD FLOORING AND WALL BASE TO MATCH EXISTING WOOD FINISHES
- D6 REMOVE ACOUSTICAL CEILING TILE AND GRID. REMOVE ALL LIGHT FIXTURES, SEE ELEC. DWGS
- D7 REMOVE EXISTING DOOR AND ASSOCIATED HARDWARE, INCLUDING BUT NOT LIMITED TO HINGES, DOOR CLOSERS, AND STRIKE PLATES
- D8 REMOVE PROJECTION SCREENS, HOOKS, AND OTHER EQUIPMENT (MOUNTED ON WALL OR CEILING)
- D9 REMOVE SINK AND ASSOCIATED CASEWORK AND SHELVING, INCLUDING ANY MOUNTING BRACKETS. REMOVE ALL ACCESSORIES (PAPER TOWEL, SOAP DISPENSERS, ETC.) CAREFULLY RETAIN EXISTING GLAZED BLOCK BASE FOR REUSE.
- D10 REMOVE TOILET ACCESSORIES, INCLUDING SOAP DISPENSERS, PAPER TOWEL DISPENSERS, TOILET PAPER DISPENSERS, AND MIRRORS
- D11 REMOVE EXISTING WINDOW SHADES, INCLUDING ANY MOUNTING BRACKETS AT EACH WINDOW IN ROOM
- D12 REMOVE EXISTING CASEWORK, INCLUDING ANY MOUNTED HARDWARE
- D13 REMOVE AND STORE/PROTECT HAND SANITIZER FOR REINSTALLATION
- D14 REMOVE EXISTING COAT HOOKS, COAT HOOK RAILS TO REMAIN, PATCH AS REQUIRED TO INSTALL NEW HOOKS
- D15 REMOVE EXISTING VINYL WALL BASE
- D16 REMOVE EXISTING WATER FOUNTAIN
- D17 REMOVE EXISTING PROJECTOR AT CEILING INCLUDING ALL ASSOC. BRACKETS. PROVIDE BLANK PLATE AT JUNCTION BOX AS REQUIRED.

BID DRAWINGS:

JANUARY 25, 2021

10		
9		
8		
7		
6		
5		
4		
3		
2		
1	1/25/21	BID DRAWINGS
NO.	DATE	REVISION

SCHOOL & LOCATION
VARE-WASHINGTON ELEMENTARY SCHOOL
1198 S. 5TH ST.
PHILADELPHIA, PA 19147

PROJECT TITLE
CLASSROOM MODERNIZATION

DRAWING TITLE
ENLARGED DEMOLITION PLANS

DRAWING SCALE AS INDICATED	
LOCATION NO. XXXX	FILE NO. XXXX
DRAWN BY ECN	CHECKED BY GJC
GC: 8-028 OF 2020 / 21	PC: 8-027 OF 2020 / 21
EC: 8-030 OF 2020 / 21	

DRAWING NO.
AD100
SHEET 4 OF 22

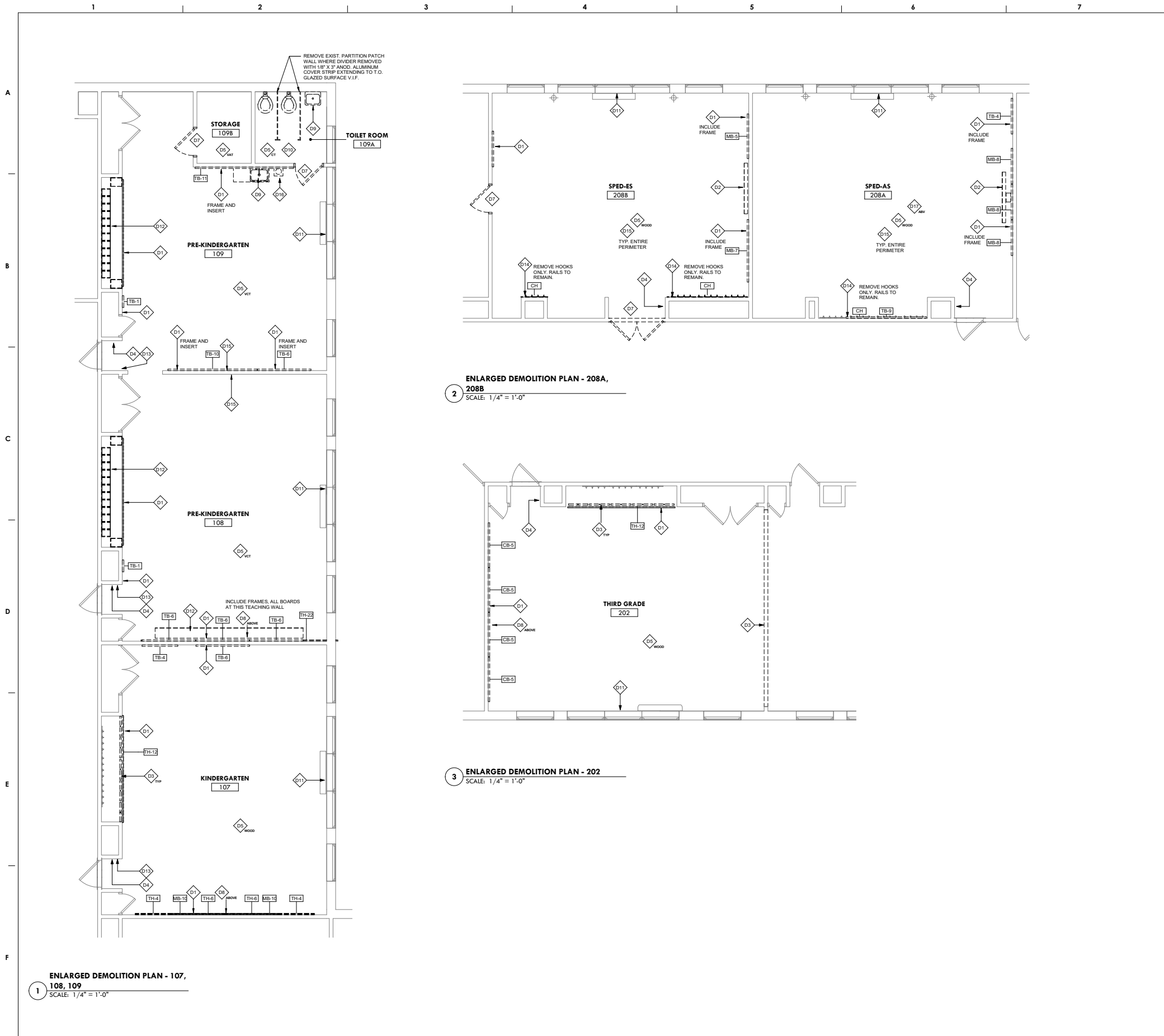
DEMOLITION DEFINITIONS

REMOVE: DETACH ITEMS FROM EXISTING CONSTRUCTION USING METHODS AND EQUIPMENT TO PREVENT DAMAGE TO SURFACES TO REMAIN AND DISPOSE OF ITEM OFF-SITE UNLESS NOTED TO BE SALVAGED OR REINSTALLED.

REMOVE AND SALVAGE: DETACH ITEMS FROM EXISTING CONSTRUCTION CAREFULLY USING GENTLE METHODS AND EQUIPMENT TO PREVENT DAMAGE TO THE ITEM AND SURFACES TO REMAIN. PREPARE ITEM FOR REUSE, AND DELIVER ITEM TO OWNER AS DIRECTED.

REMOVE AND REINSTALL: DETACH ITEMS FROM EXISTING CONSTRUCTION CAREFULLY USING GENTLE METHODS AND EQUIPMENT TO PREVENT DAMAGE TO THE ITEM AND SURFACES TO REMAIN. PATCH AS REQUIRED TO INSTALL NEW HOOKS.

EXISTING TO REMAIN: LEAVE EXISTING ITEMS THAT ARE NOT TO BE REMOVED AND THAT ARE NOT OTHERWISE INDICATED TO BE SALVAGED OR REINSTALLED.



1 ENLARGED DEMOLITION PLAN - 107, 108, 109
SCALE: 1/4" = 1'-0"

2 ENLARGED DEMOLITION PLAN - 208A, 208B
SCALE: 1/4" = 1'-0"

3 ENLARGED DEMOLITION PLAN - 202
SCALE: 1/4" = 1'-0"

DEMOLITION GENERAL NOTES

1. ALL EXISTING PARTITIONS ARE TO REMAIN U.N.O. OR SHOWN DASHED
2. DIMENSIONS ARE TO FACE OF WALL FINISH U.N.O.
3. THE CONTRACTOR SHALL DELIVER SALVAGED ITEMS TO THE SCHOOL DISTRICT OF PHILADELPHIA (SDP) AS DIRECTED.
4. DEMOLITION OF ALL WALL MOUNTED DISPLAY BOARDS, CHALKBOARDS, TACKBOARDS, ETC. SHALL BE CARRIED OUT BY THE ABATEMENT CONTRACTOR. SDP BELIEVES THAT THE ADHESIVE USED CONTAINS ASBESTOS.
5. THE G.C. OR AS NECESSARY, THE ABATEMENT CONTRACTOR SHALL CAREFULLY DISCONNECT AND TAKE DOWN ALL SMART BOARDS AND CEILING MOUNTED SMART PROJECTORS AND TURN OVER TO SDP AS SALVAGED EQUIPMENT.
6. THE CONTRACTOR SHALL AT ALL WALL AND CEILING SURFACES TO REMAIN, PATCH OR FILL ALL VISIBLE EXISTING HOLES, CRACKS AND SIMILAR SURFACE DEFECTS. THE CONTRACTOR SHALL PATCH ANY DAMAGE DUE TO THE DEMOLITION WORK. PATCHING SHALL MATCH EXISTING ADJACENT FINISHES.
7. CONTRACTOR SHALL REMOVE ALL LOOSE PAINT, TAPE, ADHESIVE, BRACKETS, HOOKS, ETC., INCLUDING ANY ON THE WALLS AND CEILING ABOVE NEW ACT
8. REMOVE ALL UNUSED OR ABANDONED CONDUIT AND WIRE MOLD

DEMOLITION KEYNOTES

- D1 REMOVE INSERTS ON THIS WALL. BOARD FRAMES TO REMAIN UNLESS SPECIFICALLY IDENTIFIED FOR REMOVAL. REMOVE INSERTS ONLY. FRAMES TO REMAIN UNLESS SPECIFICALLY IDENTIFIED OTHERWISE. SEE TYPE:
 - CB-X CHALKBOARD
 - MB-X MARKERBOARD
 - TB-X TACKBOARD
 - TH-X TACKBOARD HEADER
 - CH-X COAT HOOKS, SHELVING, HARDWARE
- D2 REMOVE AND SALVAGE EXISTING INTERACTIVE PANEL BOARD AND PROJECTOR. REMOVE ASSOCIATED MOUNTING EQUIPMENT
- D3 REMOVE EXISTING WOOD MOVABLE PARTITION WALL, INCL. ALL HEAD AND FLOOR-MOUNTED HARDWARE
- D4 REMOVE AND STORE TELEPHONE, TELEPHONE BOX FOR REINSTALLATION
- D5 EXISTING FLOORING AND BASE, TYPE:
 - VAT REMOVE VINYL ASBESTOS TILE, BY ABATEMENT CONTRACTOR
 - CT REMOVE CERAMIC TILE
 - VCT REMOVE VINYL COMPOSITION TILE
 - WDWOOD WOOD FLOOR TO REMAIN, REFINISH WOOD FLOORING AND WALL BASE TO MATCH EXISTING WOOD FINISHES
- D6 REMOVE ACOUSTICAL CEILING TILE AND GRID. REMOVE ALL LIGHT FIXTURES, SEE ELEC. DWGS
- D7 REMOVE EXISTING DOOR AND ASSOCIATED HARDWARE, INCLUDING BUT NOT LIMITED TO HINGES, DOOR CLOSERS, AND STRIKE PLATES
- D8 REMOVE PROJECTION SCREENS, HOOKS, AND OTHER EQUIPMENT (MOUNTED ON WALL OR CEILING)
- D9 REMOVE SINK AND ASSOCIATED CASEWORK AND SHELVING, INCLUDING ANY MOUNTING BRACKETS. REMOVE ALL ACCESSORIES (PAPER TOWEL, SOAP DISPENSERS, ETC.) CAREFULLY RETAIN EXISTING GLAZED BLOCK BASE FOR REUSE.
- D10 REMOVE TOILET ACCESSORIES, INCLUDING SOAP DISPENSERS, PAPER TOWEL DISPENSERS, TOILET PAPER DISPENSERS, AND MIRRORS
- D11 REMOVE EXISTING WINDOW SHADES, INCLUDING ANY MOUNTING BRACKETS AT EACH WINDOW IN ROOM
- D12 REMOVE EXISTING CASEWORK, INCLUDING ANY MOUNTED HARDWARE
- D13 REMOVE AND STORE/PROTECT HAND SANITIZER FOR REINSTALLATION
- D14 REMOVE EXISTING COAT HOOKS, COAT HOOK RAILS TO REMAIN, PATCH AS REQUIRED TO INSTALL NEW HOOKS
- D15 REMOVE EXISTING VINYL WALL BASE
- D16 REMOVE EXISTING WATER FOUNTAIN
- D17 REMOVE EXISTING PROJECTOR AT CEILING INCLUDING ALL ASSOC. BRACKETS. PROVIDE BLANK PLATE AT JUNCTION BOX AS REQUIRED.

DEMOLITION DEFINITIONS

REMOVE: DETACH ITEMS FROM EXISTING CONSTRUCTION USING METHODS AND EQUIPMENT TO PREVENT DAMAGE TO SURFACES TO REMAIN AND DISPOSE OF ITEM OFF-SITE UNLESS NOTED TO BE SALVAGED OR REINSTALLED.

REMOVE AND SALVAGE: DETACH ITEMS FROM EXISTING CONSTRUCTION CAREFULLY USING GENTLE METHODS AND EQUIPMENT TO PREVENT DAMAGE TO THE ITEM AND SURFACES TO REMAIN. PREPARE ITEM FOR REUSE, AND DELIVER ITEM TO OWNER AS DIRECTED.

REMOVE AND REINSTALL: DETACH ITEMS FROM EXISTING CONSTRUCTION CAREFULLY USING GENTLE METHODS AND EQUIPMENT TO PREVENT DAMAGE TO THE ITEM AND SURFACES TO REMAIN. PREPARE ITEM FOR REUSE, AND REINSTALL WHERE INDICATED ON NEW WORK.

EXISTING TO REMAIN: LEAVE EXISTING ITEMS THAT ARE NOT TO BE REMOVED AND THAT ARE NOT OTHERWISE INDICATED TO BE SALVAGED OR REINSTALLED.

SEAL:

NAME (LICENSED PROFESSIONAL)	DWG
STATE AND LICENSE NO.	XX/XX/20XX

THE SHEWARD PARTNERSHIP, LLC
1315 Locust Street, Suite 205, Philadelphia, PA 19103
PES

PES
PRINCETON ENGINEERING SERVICES, PC
101 Morgan Lane - Suite 205, Plainsboro, NJ 08536
1.609.452.9700 www.princetonengineering.com

BID DRAWINGS:
JANUARY 25, 2021

10		
9		
8		
7		
6		
5		
4		
3		
2		
1	1/25/21	BID DRAWINGS
NO.	DATE	REVISION

SCHOOL & LOCATION
VARE-WASHINGTON ELEMENTARY SCHOOL
1198 S. 5TH ST.
PHILADELPHIA, PA 19147

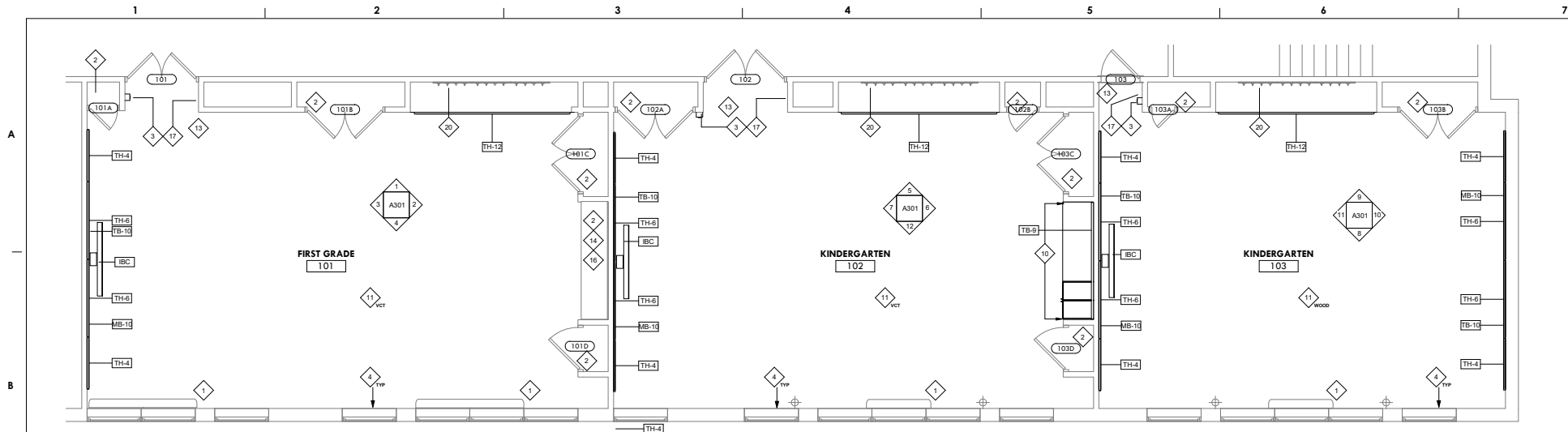
PROJECT TITLE
CLASSROOM MODERNIZATION

DRAWING TITLE
ENLARGED DEMOLITION PLANS

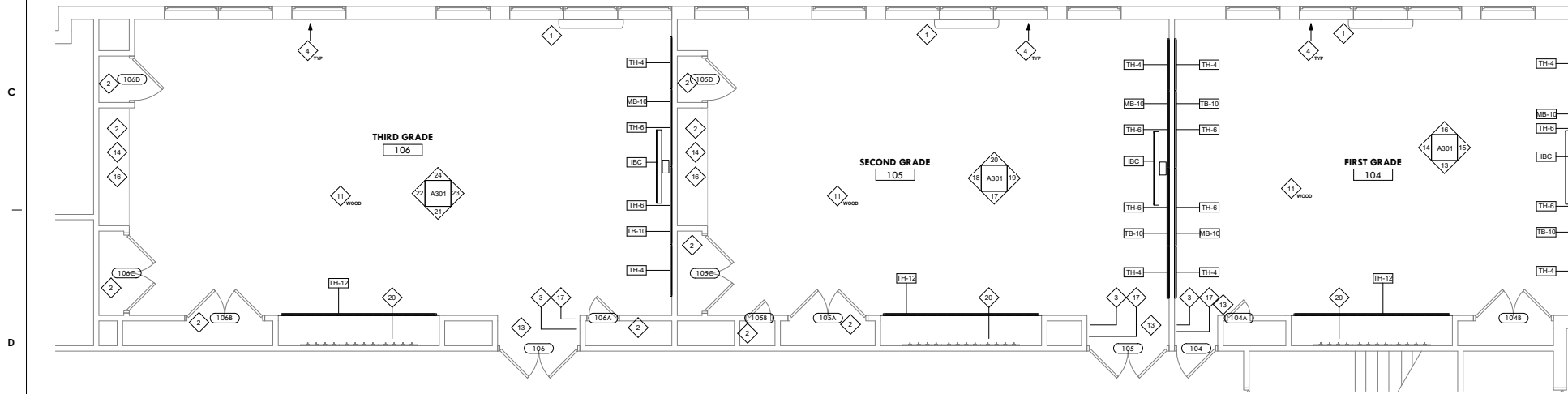
DRAWING SCALE AS INDICATED	
LOCATION NO. XXXX	FILE NO. XXX
DRAWN BY ECN	CHECKED BY GJC

GC: 8-028	OF: 2020 / 21
PC: 8-027	OF: 2020 / 21
EC: 8-030	OF: 2020 / 21

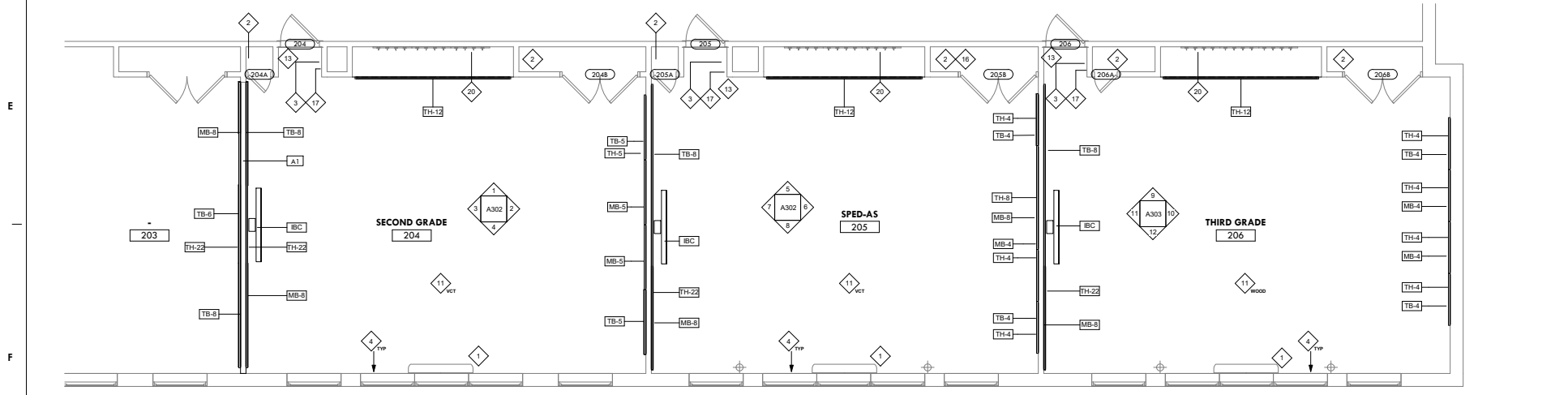
DRAWING NO.
AD101
SHEET 5 OF 22



1 ENLARGED NEW WORK PLAN - 101, 102, 103
SCALE: 1/4" = 1'-0"



2 ENLARGED NEW WORK PLAN - 104, 105, 106
SCALE: 1/4" = 1'-0"



3 ENLARGED NEW WORK PLAN - 204, 205, 206
SCALE: 1/4" = 1'-0"

NEW WORK GENERAL NOTES

1. SURFACES NOT PREVIOUSLY FIELD PAINTED SHALL NOT BE PAINTED U.N.O. AND SHALL BE PROTECTED FROM PAINT APPLIED TO ADJACENT SURFACES.
2. FROM EXISTING SURFACES TO REMAIN, INCLUDING THOSE ON THE INTERIOR OF CABINETS AND CLOSETS, REMOVE TAPE, ADHESIVE RESIDUE, INK RESIDUE, CRAYON RESIDUE, STAPLES AND SIMILAR SURFACE IMPERFECTIONS AND MARKS. WHERE EXISTING SURFACES ARE TO REMAIN UNPAINTED OR ARE NOT REFINISHED THOROUGHLY CLEAN THE SURFACE. SURFACES TO RECEIVE THOROUGH CLEANING SHALL INCLUDE BUT ARE NOT LIMITED TO WINDOW GLAZING, METAL WINDOW FRAMES, WALL BASE, ROOM EQUIPMENT AND ROOM FIXTURES AND FITTINGS.
3. ALL PREVIOUSLY PAINTED SURFACES INCLUDING BUT NOT LIMITED TO WALLS, CEILING, SOFFITS, BEAMS, COLUMNS, CLOSET INTERIORS, EXPOSED DUCTWORK, DOORS, DOOR AND WINDOW FRAMES, TRIM AND SHELVING SYSTEMS SHALL BE REPAINTED U.N.O. SEE FINISH SCHEDULE FOR COLORS.
4. ALL PREVIOUSLY VARNISHED SURFACES INCLUDING BUT NOT LIMITED TO DOORS, CASEWORK, SILLS, TRIM AND SHELVING SHALL BE PREPARED AND REVARNISHED WITH CLEAR VARNISH.
5. WHERE DOORS AND DOOR FRAMES OCCUR BETWEEN AREAS IN THE SCOPE OF WORK AND AREAS NOT IN THE SCOPE OF WORK REFINISH BOTH SIDES.
6. EXISTING AND NEW PIPES, INSULATED PIPES, WIREMOLD, CONDUIT, AND SURFACE-MOUNTED JUNCTION BOXES AND THE LIKE SHALL BE PAINTED TO MATCH WALL BEYOND, SEE FINISH SCHEDULE FOR WALL COLOR.

NEW WORK KEY NOTES

- 1. PREPARE AND ELECTROSTATICALLY PAINT LINT VENTILATORS AND ASSOCIATED PIPE ENCLOSURES. INSTALL NEW RADIATOR INSULATION. SEE AIR REPORT FOR QUANTITIES.
- 2. CLEAN AND REMOVE ALL LOOSE MATERIAL FROM BUILT-IN AND FREESTANDING STORAGE FURNITURE.
- 3. REINSTALL PREVIOUS SANITIZER DISPENSER.
- 4. NEW ROLLER SHADE FOR EACH WINDOW IN ROOM.
- 5. NEW SINK AT EXISTING PLUMBING. SEE PLUMBING DRAWINGS.
- 6. NEW PAPER TOWEL AND SOAP DISPENSERS.
- 7. NEW TOILET ACCESSORIES INCLUDING SOAP DISPENSERS, PAPER TOWEL DISPENSERS, TOILET PAPER DISPENSERS, AND MIRRORS.
- 8. NEW SINK COUNTER AND CASEWORK.
- 9. NEW CUBBIES.
- 10. NEW CASEWORK.
- 11. NEW FLOOR FINISH
VCT - NEW VCT/TILE FLOOR
WD - REFINISH WOOD TO MATCH EXISTING (DARK FINISH)
- 12. PROVIDE NEW HAND SANITIZER DISPENSER.
- 13. PREPARE AND ELECTROSTATICALLY PAINT EXISTING TELEPHONE BOXES TO MATCH DOOR FRAMES.
- 14. REFURBISH EXISTING WOOD CASEWORK. RESECURE ALL HARDWARE, HINGES, BRACKETS, AND MISCELLANEOUS ATTACHMENTS AND PROVIDE SMOOTH OPERATION OF ALL DOORS, DRAWERS, ETC.
- 15. (RESERVED)
- 16. SAND AND REFINISH EXISTING STORAGE CLIPBOARD.
- 17. PAINT PHONE BOX TO MATCH NEW WALL PAINT.
- 18. (RESERVED)
- 19. NEW WOOD WALL BASE TO MATCH EXISTING.
- 20. RE-SECURE EXISTING COAT RACKS TO WALL. REPAINT STEEL FRAMES. REFINISH WOOD RAILS TO MATCH EXISTING FINISH. SECURE EXISTING HOOKS TO WOOD RAILS.
- 21. NEW COAT HOOKS ON EXISTING RAILS. REPAIR AND REPAINT RAILS PRIOR TO INSTALLATION.

NEW WORK LEGEND

- 1. WALL-MOUNTED EDUCATIONAL SURFACE
 - MB-X MARKERBOARD
 - TB-X TACKBOARD
 - TH-X TACKBOARD HEADER
 - TT-X TACK TRACK
 - *X INDICATES TYPE, SEE WALL EQUIPMENT SCHEDULE
- INTERACTIVE PANEL BOARD
SUPPLIED BY SGP, INC.
- CASEWORK (STORAGE CABINETS)
SEE INTERIOR ELEVATIONS AND CASEWORK SCHEDULE.
- CASEWORK (STUDENT CUBBIES)
SEE INTERIOR ELEVATIONS AND CASEWORK SCHEDULE.
- WALL HUNG CLOCK
TO BE REPLACED WITH NEW CLOCK. REFER W.A.P.

BID DRAWINGS:
JANUARY 25, 2021

10	
9	
8	
7	
6	
5	
4	
3	
2	
1	1/25/21 BID DRAWINGS
NO.	DATE REVISION

SCHOOL & LOCATION
**VARE-WASHINGTON
ELEMENTARY SCHOOL**
1198 S. 5TH ST.,
PHILADELPHIA, PA 19147

PROJECT TITLE
CLASSROOM MODERNIZATION

DRAWING TITLE
ENLARGED NEW WORK PLANS

DRAWING SCALE AS INDICATED	
LOCATION NO. XXXX	FILE NO. XXX
DRAWN BY ECN	CHECKED BY GJC
GC: 8-028 OF 2020 / 21	PC: 8-027 OF 2020 / 21
EC: 8-030 OF 2020 / 21	

DRAWING NO.
A100
SHEET 6 OF 22



1 ENLARGED NEW WORK PLAN - 107, 108, 109
SCALE: 1/4" = 1'-0"

2 ENLARGED NEW WORK PLAN - 208A, 208B
SCALE: 1/4" = 1'-0"

3 ENLARGED NEW WORK PLAN - 202
SCALE: 1/4" = 1'-0"

NEW WORK GENERAL NOTES

- SURFACES NOT PREVIOUSLY FIELD PAINTED SHALL NOT BE PAINTED U.N.O. AND SHALL BE PROTECTED FROM PAINT APPLIED TO ADJACENT SURFACES.
- FROM EXISTING SURFACES TO REMAIN, INCLUDING THOSE ON THE INTERIOR OF CABINETS AND CLOSETS, REMOVE TAPE, ADHESIVE RESIDUE, INK RESIDUE, CRAYON RESIDUE, STAPLES AND SIMILAR SURFACE IMPERFECTIONS AND MARKS. WHERE EXISTING SURFACES ARE TO REMAIN UNPAINTED OR ARE NOT REFINISHED THOROUGHLY CLEAN THE SURFACE. SURFACES TO RECEIVE THOROUGH CLEANING SHALL INCLUDE BUT ARE NOT LIMITED TO WINDOW GLAZING, METAL WINDOW FRAMES, WALL BASE, ROOM EQUIPMENT AND ROOM FIXTURES AND FITTINGS.
- ALL PREVIOUSLY PAINTED SURFACES INCLUDING BUT NOT LIMITED TO WALLS, CEILING, SOFFITS, BEAMS, COLUMNS, CLOSET INTERIORS, EXPOSED DUCTWORK, DOORS, DOOR AND WINDOW FRAMES, TRIM AND SHELVING SYSTEMS SHALL BE REPAINTED U.N.O. SEE FINISH SCHEDULE FOR COLORS.
- ALL PREVIOUSLY VARNISHED SURFACES INCLUDING BUT NOT LIMITED TO DOORS, CASEWORK, BILLS, TRIM AND SHELVING SHALL BE PREPARED AND REVARNISHED WITH CLEAR VARNISH.
- WHERE DOORS AND DOOR FRAMES OCCUR BETWEEN AREAS IN THE SCOPE OF WORK AND AREAS NOT IN THE SCOPE OF WORK REFINISH BOTH SIDES.
- EXISTING AND NEW PIPES, INSULATED PIPES, WIREMOLD, CONDUIT, AND SURFACE-MOUNTED JUNCTION BOXES AND THE LIKE SHALL BE PAINTED TO MATCH WALL BEYOND, SEE FINISH SCHEDULE FOR WALL COLOR.

NEW WORK KEY NOTES

- 1 PREPARE AND ELECTROSTATICALLY PAINT LINT VENTILATORS AND ASSOCIATED PIPE ENCLOSURES. INSTALL NEW RADIATOR INSULATION. SEE AIR REPORT FOR QUANTITIES.
- 2 CLEAN AND REMOVE ALL LOOSE MATERIAL FROM BUILT-IN AND FREE-STANDING STORAGE FURNITURE
- 3 REINSTALL PREVIOUS SANITIZER DISPENSER
- 4 NEW ROLLER SHADE FOR EACH WINDOW IN ROOM
- 5 NEW SINK AT EXISTING PLUMBING. SEE PLUMBING DRAWINGS
- 6 NEW PAPER TOWEL AND SOAP DISPENSERS
- 7 NEW TOILET ACCESSORIES INCLUDING SOAP DISPENSERS, PAPER TOWEL DISPENSERS, TOILET PAPER DISPENSERS, AND MIRRORS
- 8 NEW SINK COUNTER AND CASEWORK
- 9 NEW CUBBIES
- 10 NEW CASEWORK
- 11 NEW FLOOR FINISH
VCT - NEW VCT/TILE FLOOR
WD - REFINISH WOOD TO MATCH EXISTING (DARK FINISH)
- 12 PROVIDE NEW HAND SANITIZER DISPENSER
- 13 PREPARE AND ELECTROSTATICALLY PAINT EXISTING TELEPHONE BOXES TO MATCH DOOR FRAMES
- 14 REFURBISH EXISTING WOOD CASEWORK- RESECURE ALL HARDWARE, HINGES, BRACKETS, AND MISCELLANEOUS ATTACHMENTS AND PROVIDE SMOOTH OPERATION OF ALL DOORS, DRAWERS, ETC.
- 15 (RESERVED)
- 16 SAND AND REFINISH EXISTING STORAGE CLIPBOARD
- 17 PAINT PHONE BOX TO MATCH NEW WALL PAINT
- 18 (RESERVED)
- 19 NEW WOOD WALL BASE TO MATCH EXISTING
- 20 RE-SECURE EXISTING COAT RACKS TO WALL. REPAINT STEEL FRAMES. REFINISH WOOD RAILS TO MATCH EXISTING FINISH. SECURE EXISTING HOOKS TO WOOD RAILS.
- 21 NEW COAT HOOKS ON EXISTING RAILS. REPAIR AND REPAINT RAILS PRIOR TO INSTALLATION.

NEW WORK LEGEND

- 11 WALL-MOUNTED EDUCATIONAL SURFACE
- MB-X MARKERBOARD
- TB-X TACKBOARD
- TH-X TACKBOARD HEADER
- TT-X TACK TRACK
- *X INDICATES TYPE, SEE WALL EQUIPMENT SCHEDULE
- INTERACTIVE PANEL BOARD SUPPLIED BY SGP, INC.
- CASEWORK (STORAGE CABINETS) SEE INTERIOR ELEVATIONS AND CASEWORK SCHEDULE.
- CASEWORK (STUDENT CUBBIES) SEE INTERIOR ELEVATIONS AND CASEWORK SCHEDULE.
- WALL HUNG CLOCK TO BE REPLACED WITH NEW CLOCK. REFER W.A.P.

THE SCHOOL DISTRICT OF PHILADELPHIA

OFFICE OF CAPITAL PROGRAMS

440 NORTH BROAD STREET
PHILADELPHIA, PA 19130 - 4015
(215) 400 - 4730 | (215) 400 - 4731 (fax)
www.philasd.org

SEAL:

NAME (LICENSED PROFESSIONAL) DATE
STATE AND LICENSE NO. STATE AND LICENSE NO.

THE SHEWARD PARTNERSHIP, LLC
1315 Locust Street, Suite 2000
Philadelphia, PA 19103



PRINCETON ENGINEERING SERVICES, PC
101 Morgan Lane - Suite 205, Plainsboro, NJ 08536
1.609.452.9700 www.princetonengineering.com

BID DRAWINGS:
JANUARY 25, 2021

10	
9	
8	
7	
6	
5	
4	
3	
2	
1	1/25/21 BID DRAWINGS
NO.	DATE REVISION

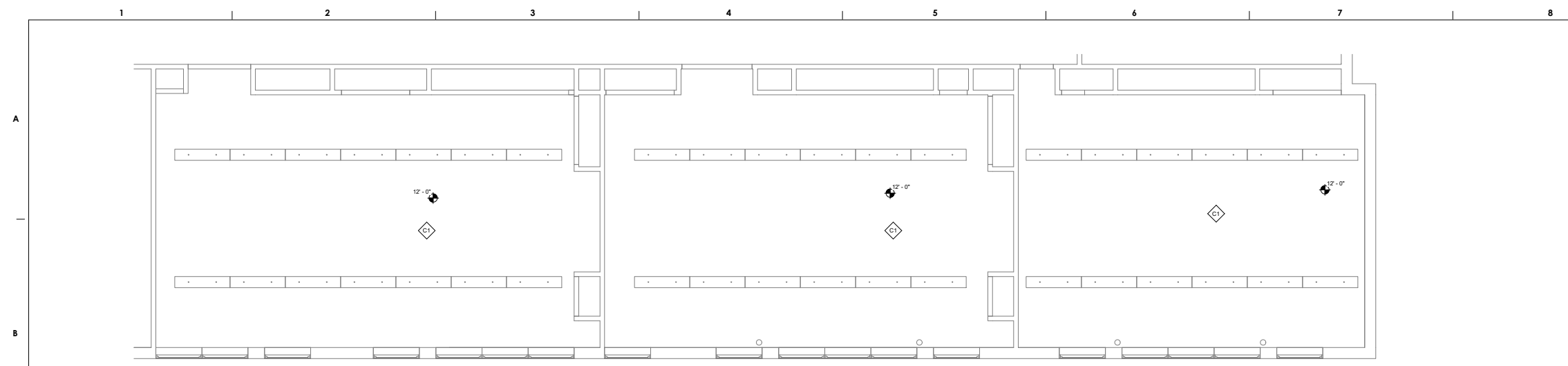
SCHOOL & LOCATION
VARE-WASHINGTON ELEMENTARY SCHOOL
1198 S. 5TH ST., PHILADELPHIA, PA 19147

PROJECT TITLE
CLASSROOM MODERNIZATION

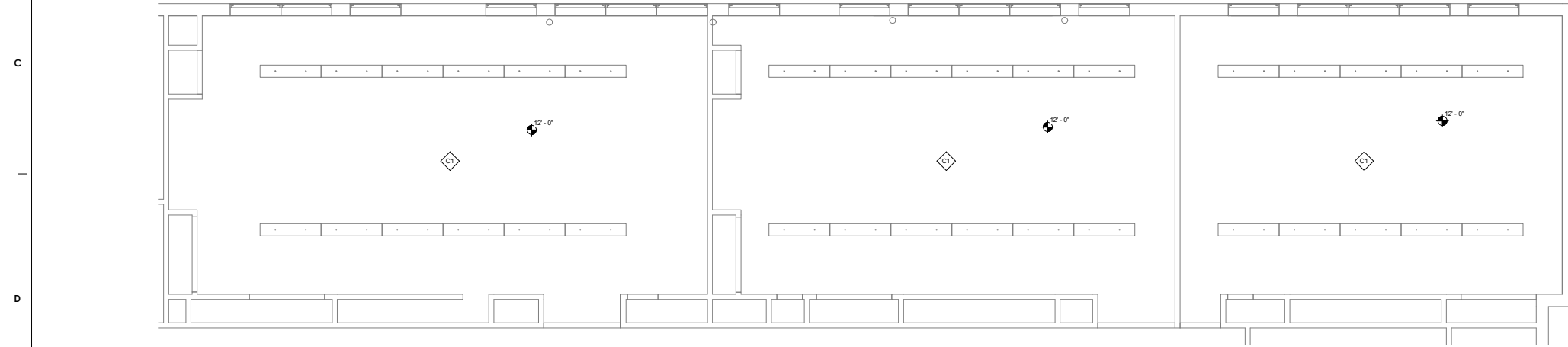
DRAWING TITLE
ENLARGED NEW WORK PLANS

DRAWING SCALE AS INDICATED	
LOCATION NO. XXXX	FILE NO. XXXX
DRAWN BY ECN	CHECKED BY GJC
GC: 8-028 OF 2020 / 21	PC: 8-027 OF 2020 / 21
EC: 8-030 OF 2020 / 21	

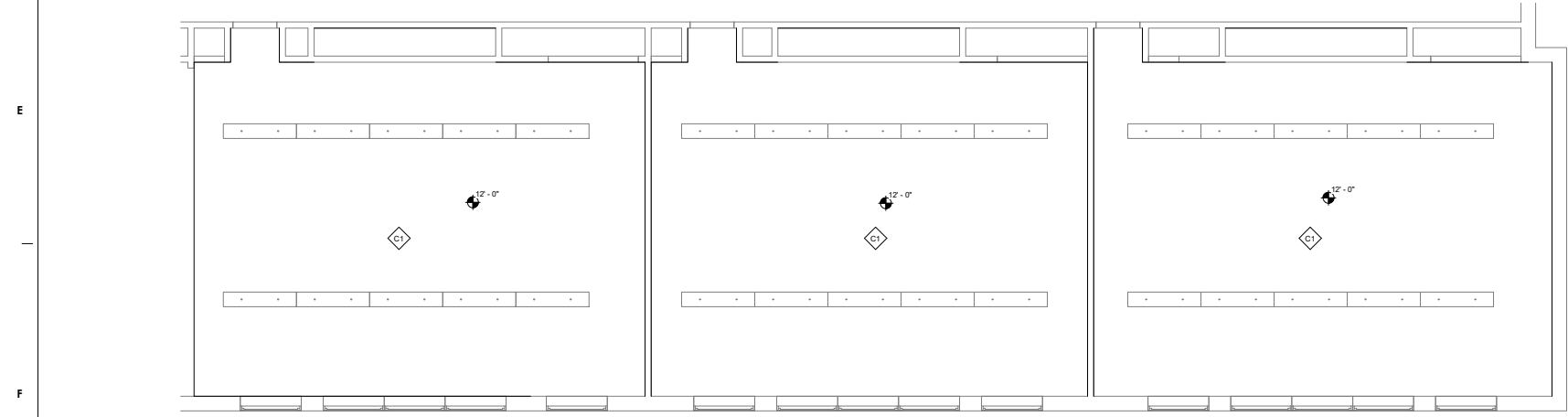
DRAWING NO.
A101
SHEET 7 OF 22



1 FIRST FLOOR RCP - NEW WORK 101, 102, 103
SCALE: 1/4" = 1'-0"



2 FIRST FLOOR RCP - NEW WORK 104, 105, 106
SCALE: 1/4" = 1'-0"



3 ENLARGED REFLECTED CEILING PLAN 204, 205, 206
SCALE: 1/4" = 1'-0"

RCP GENERAL NOTES

- SEE ELECTRICAL PLANS FOR LIGHTING AND IT INFORMATION
- PAINT ALL CEILINGS WHERE EXPOSED, INCLUDING ALL BEAMS, PIPES, AND DUCTS, TO BE PAINTED PER FINISH SCHEDULE.
- INCLUDE PLASTER REPAIR PER GENERAL NOTES ON G100.

- C1 REPAIR PLASTER CEILING AND REPAINT.
- C2 NEW 2' X 4' ACT CEILING WITH 4" FASCIA EDGING.

RCP LEGEND

- CEILING FINISHES**
- ACP-1 24" X 48" ACOUSTICAL CEILING PANELS
 - SUSPENDED GRID
 - SCHOOL ZONE FINE FISSED

BID DRAWINGS
JANUARY 25, 2021

10		
9		
8		
7		
6		
5		
4		
3		
2		
1	1/25/21 BID DRAWINGS	
NO.	DATE	REVISION

SCHOOL & LOCATION
VARE-WASHINGTON ELEMENTARY SCHOOL
1198 S. 5TH ST.
PHILADELPHIA, PA 19147

PROJECT TITLE
CLASSROOM MODERNIZATION

DRAWING TITLE
ENLARGED REFLECTED CEILING PLANS

DRAWING SCALE AS INDICATED	
LOCATION NO. XXXX	FILE NO. XXXX
DRAWN BY ECN	CHECKED BY GJC
GC: 8-028 OF 2020 / 21	PC: 8-029 OF 2020 / 21
EC: 8-030 OF 2020 / 21	

DRAWING NO.
A200
SHEET 8 OF 22

NAME (LICENSED PROFESSIONAL) DATE
 STATE AND LICENSE NO. XXXX/20XX

THE SHEWARD PARTNERSHIP, LLC
 1315 N. 9TH ST. 2300 CHESTER STREET
 PHILADELPHIA, PA 19103
 (215) 751-9300

PES
PRINCETON ENGINEERING SERVICES, PC
 101 MORGAN LANE - SUITE 205, PLAINBORO, NJ 08536
 (609) 452-9700 www.princetonengineering.com

BID DRAWINGS
JANUARY 25, 2021

NO.	DATE	REVISION
10		
9		
8		
7		
6		
5		
4		
3		
2		
1	1/25/21	BID DRAWINGS

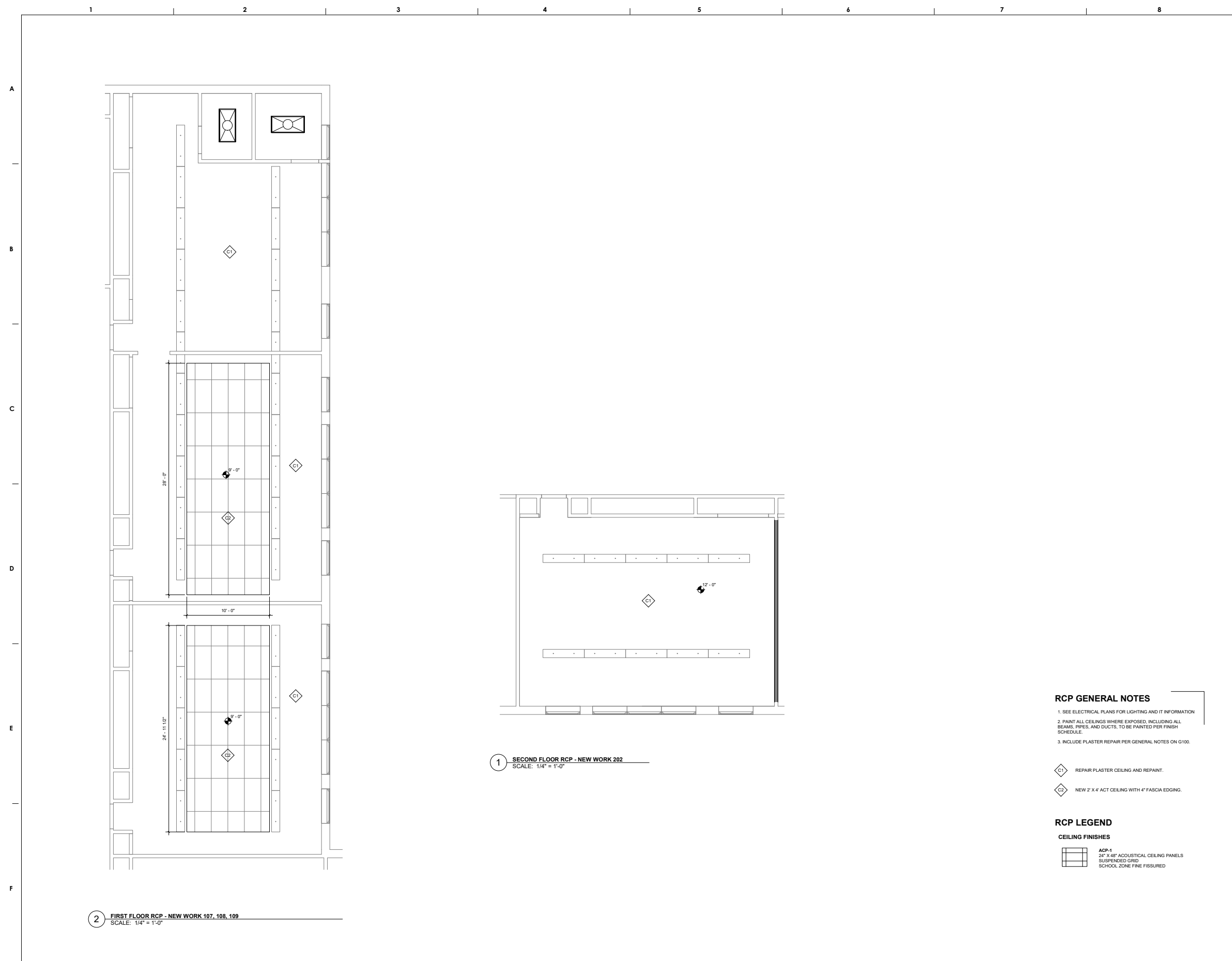
SCHOOL & LOCATION
VARE-WASHINGTON ELEMENTARY SCHOOL
 1198 S. 5TH ST.
 PHILADELPHIA, PA 19147

PROJECT TITLE
CLASSROOM MODERNIZATION

DRAWING TITLE
ENLARGED REFLECTED CEILING PLANS

DRAWING SCALE AS INDICATED	
LOCATION NO. XXXX	FILE NO. XXXX
DRAWN BY ECN	CHECKED BY GJC
GC: 8-028	OF 2020 / 21
PC: 8-029	OF 2020 / 21
EC: 8-030	OF 2020 / 21

DRAWING NO.
A201
 SHEET 9 OF 22



1 SECOND FLOOR RCP - NEW WORK 202
 SCALE: 1/4" = 1'-0"

2 FIRST FLOOR RCP - NEW WORK 107, 108, 109
 SCALE: 1/4" = 1'-0"

RCP GENERAL NOTES

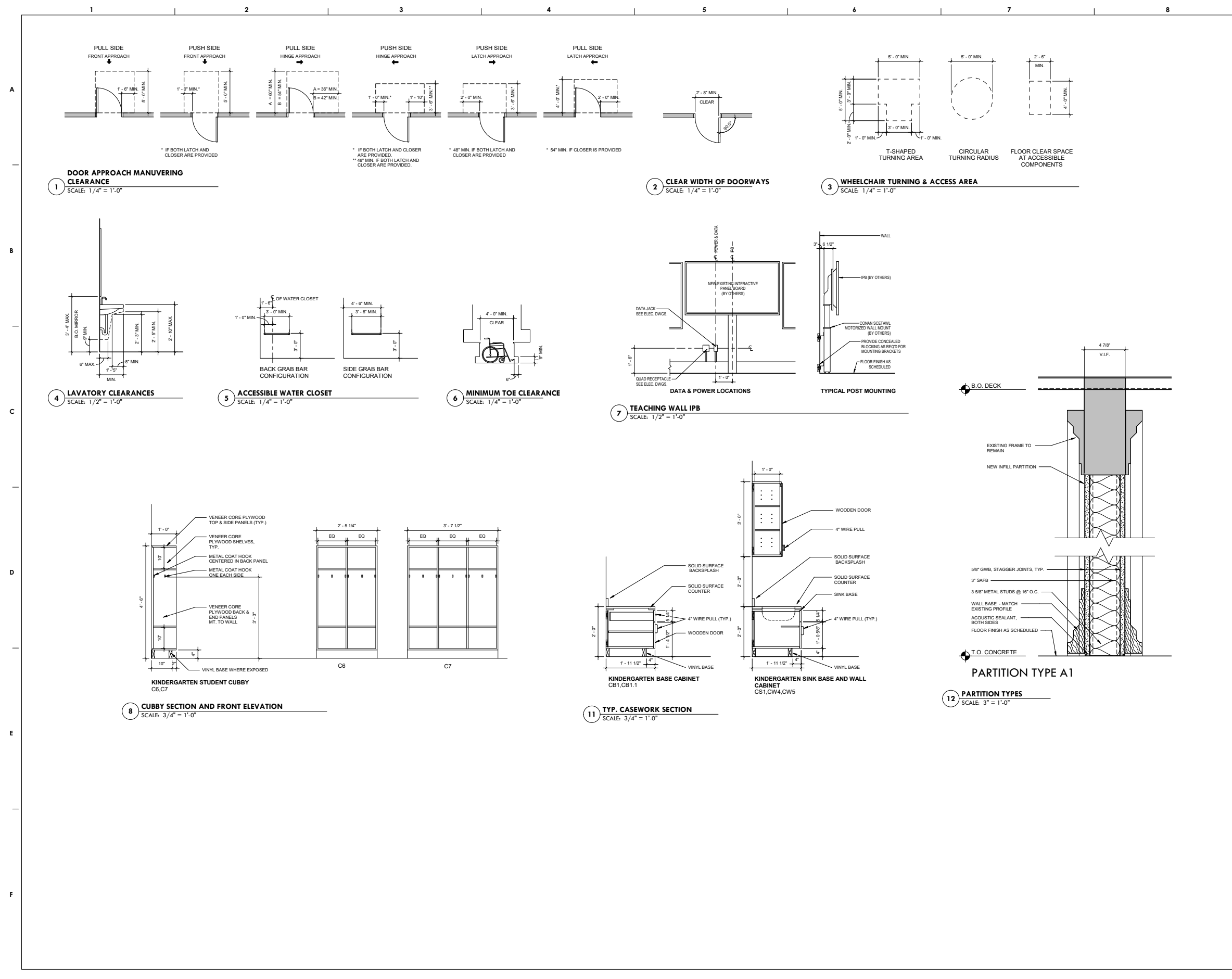
- SEE ELECTRICAL PLANS FOR LIGHTING AND IT INFORMATION
- PAINT ALL CEILINGS WHERE EXPOSED, INCLUDING ALL BEAMS, PIPES, AND DUCTS, TO BE PAINTED PER FINISH SCHEDULE.
- INCLUDE PLASTER REPAIR PER GENERAL NOTES ON G100.

- C1 REPAIR PLASTER CEILING AND REPAINT.
- C2 NEW 2' X 4' ACT CEILING WITH 4" FASCIA EDGING.

RCP LEGEND

CEILING FINISHES

	ACP-1 24" X 48" ACOUSTICAL CEILING PANELS SUSPENDED GRID SCHOOL ZONE FINE FISSURED
--	---



BID DRAWINGS
JANUARY 25, 2021

NO.	DATE	REVISION
10		
9		
8		
7		
6		
5		
4		
3		
2		
1	1/25/21	BID DRAWINGS

SCHOOL & LOCATION
VARE-WASHINGTON ELEMENTARY SCHOOL
1198 S. 5TH ST.
PHILADELPHIA, PA 19147

PROJECT TITLE
CLASSROOM MODERNIZATION

DRAWING TITLE
CASEWORK & DETAILS

DRAWING SCALE AS INDICATED	
LOCATION NO. XXXX	FILE NO. XXX
DRAWN BY ECN	CHECKED BY GJC
GC: 8-028	OF 2020 / 21
PC: 8-029	OF 2020 / 21
EC: 8-030	OF 2020 / 21

DRAWING NO.
A300
SHEET 10 OF 22



BID DRAWINGS:
JANUARY 25, 2021

10		
9		
8		
7		
6		
5		
4		
3		
2		
1	1/25/21 BID DRAWINGS	
NO.	DATE	REVISION

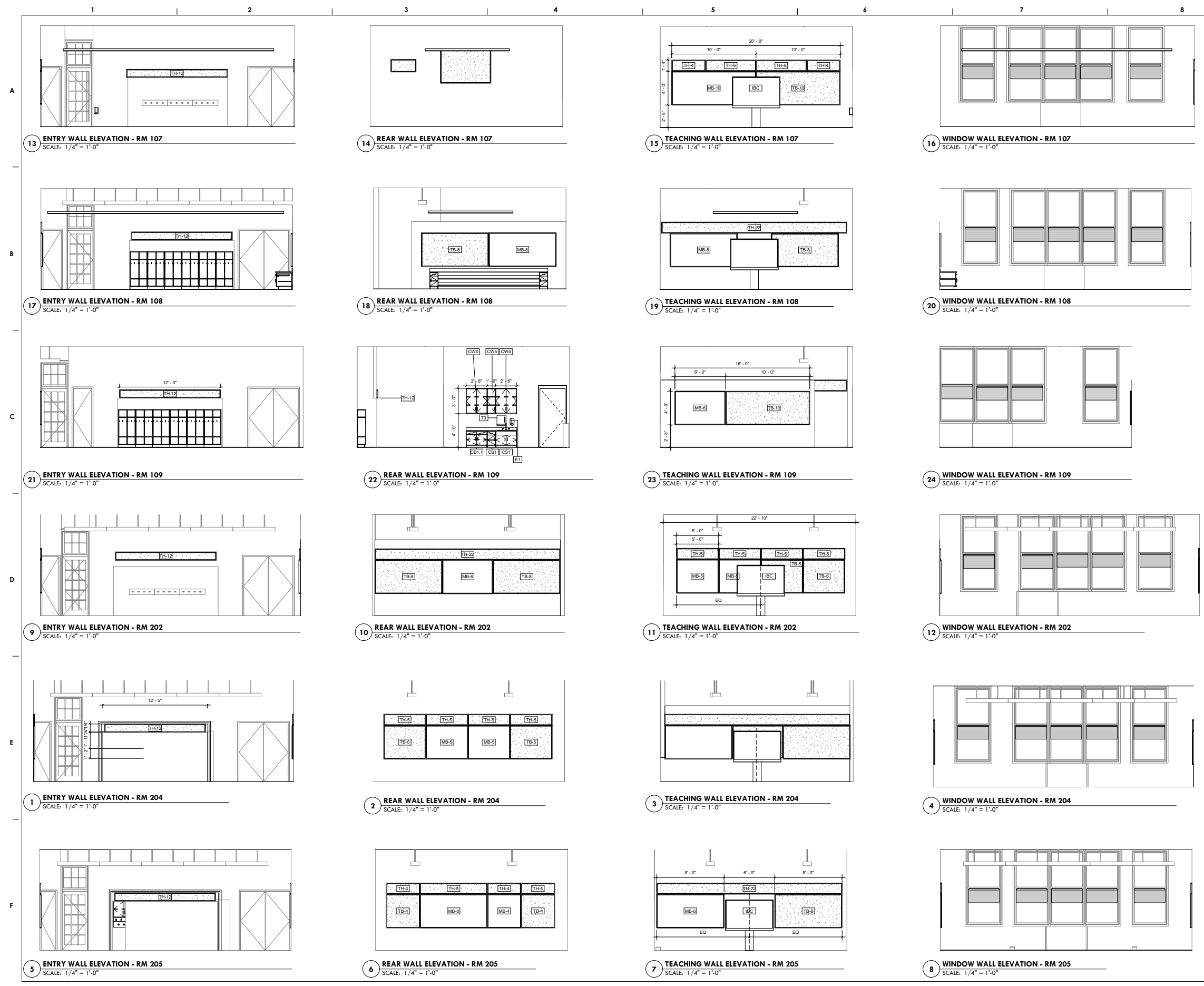
SCHOOL & LOCATION
VARE-WASHINGTON
ELEMENTARY SCHOOL
 1198 S. 5TH ST.
 PHILADELPHIA, PA 19147

PROJECT TITLE
CLASSROOM MODERNIZATION

DRAWING TITLE
INTERIOR ELEVATIONS

DRAWING SCALE AS INDICATED	
LOCATION NO. XXXX	FILE NO. XXXX
DRAWN BY ECN	CHECKED BY GJC
GC: 8-028 OF 2020 / 21	PC: 8-027 OF 2020 / 21
EC: 8-030 OF 2020 / 21	

DRAWING NO.
A301
SHEET 11 OF 22



BID DRAWINGS
JANUARY 25, 2021

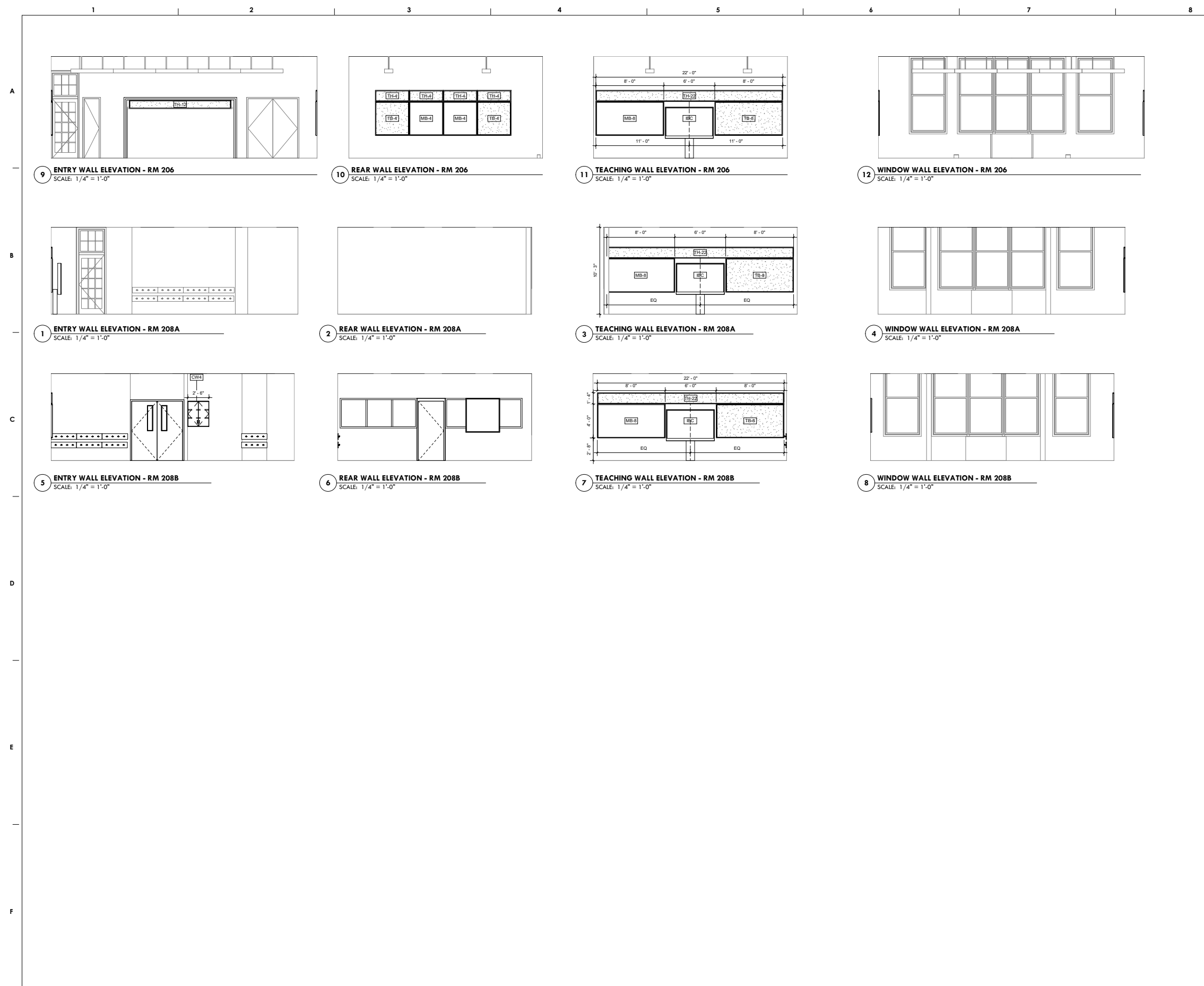
10		
9		
8		
7		
6		
5		
4		
3		
2		
1	1/25/21 BID DRAWINGS	
NO.	DATE	REVISION

SCHOOL & LOCATION
VARE-WASHINGTON
ELEMENTARY SCHOOL
1198 S. 5TH ST.
PHILADELPHIA, PA 19147

PROJECT TITLE
CLASSROOM MODERNIZATION
DRAWING TITLE
INTERIOR ELEVATIONS

DRAWING SCALE AS INDICATED	
LOCATION NO. XXXX	FILE NO. XXXX
DRAWN BY ECN	CHECKED BY GJC
GC: 8-028 OF 2020 / 21	PC: 8-027 OF 2020 / 21
EC: 8-030 OF 2020 / 21	

DRAWING NO.
A302
SHEET Desig# 22



THE SCHOOL DISTRICT OF PHILADELPHIA
 OFFICE OF CAPITAL PROGRAMS
 440 NORTH BROAD STREET
 PHILADELPHIA, PA 19130 - 4015
 (215) 400 - 4730 | (215) 400 - 4731 (fax)
 www.philacad.org

NAME (LICENSED PROFESSIONAL) DATE
 STATE AND LICENSE NO. XXXX/20XX

THE SHEWARD PARTNERSHIP, LLC
 1315 N. 9TH ST. 2ND FL. PHILADELPHIA, PA 19107
 P 215.751.9300 F 215.751.9303

PES
 PRINCETON ENGINEERING SERVICES, PC
 101 Morgan Lane - Suite 205, Plainsboro, NJ 08536
 T 609.452.9700 www.princetonengineering.com

BID DRAWINGS
JANUARY 25, 2021

10		
9		
8		
7		
6		
5		
4		
3		
2		
1	1/25/21	BID DRAWINGS
NO.	DATE	REVISION

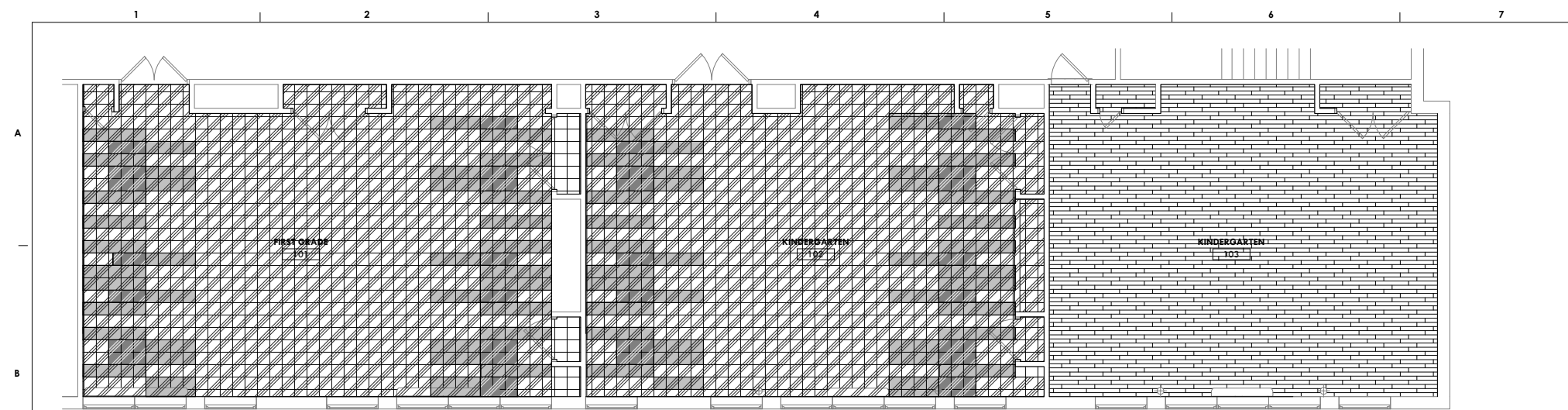
SCHOOL & LOCATION
VARE-WASHINGTON ELEMENTARY SCHOOL
 1198 S. 5TH ST., PHILADELPHIA, PA 19147

PROJECT TITLE
CLASSROOM MODERNIZATION

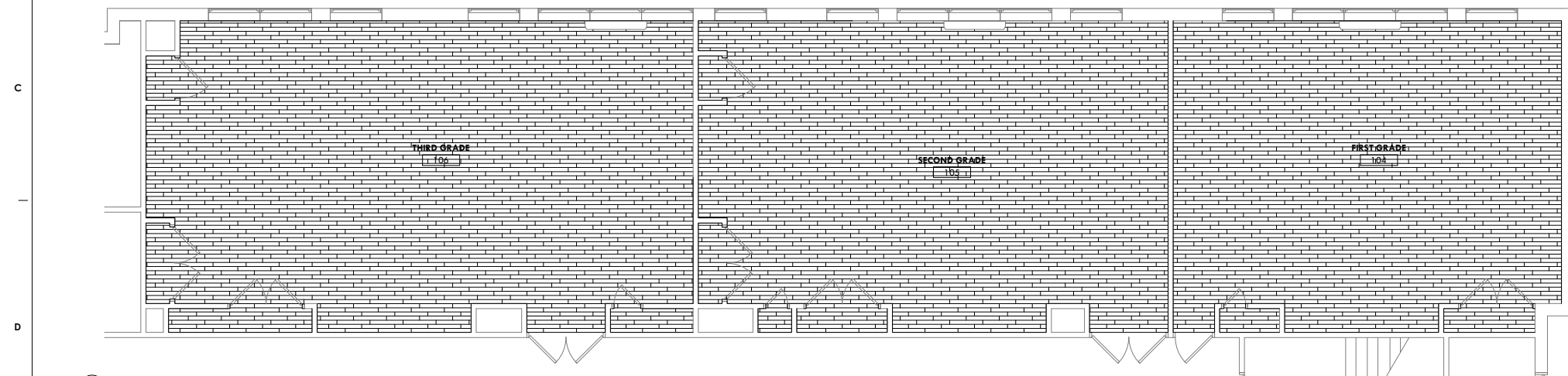
DRAWING TITLE
INTERIOR ELEVATIONS

DRAWING SCALE AS INDICATED			
LOCATION NO.	FILE NO.		
XXXX	XXX		
DRAWN BY	CHECKED BY		
ECN	GJC		
GC: 8-028	OF: 2020 / 21		
PC: 8-029	OF: 2020 / 21		
EC: 8-030	OF: 2020 / 21		

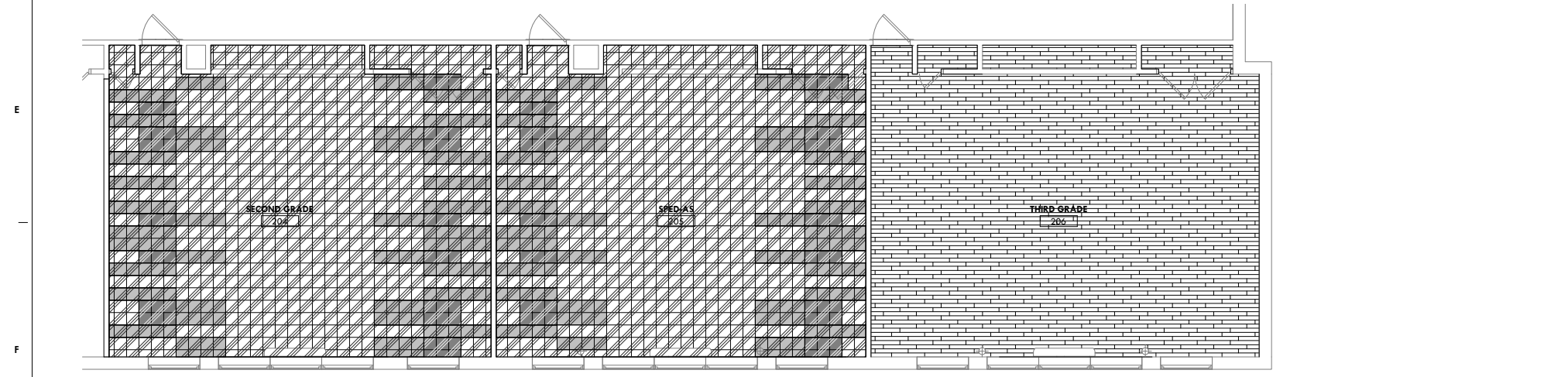
DRAWING NO.
A303
 SHEET 13 OF 22



1 ENLARGED FINISH PLAN - 101, 102, 103
SCALE: 1/4" = 1'-0"



2 ENLARGED FINISH PLAN - 104, 105, 106
SCALE: 1/4" = 1'-0"



3 ENLARGED FINISH PLAN - 204, 205, 206
SCALE: 1/4" = 1'-0"

FINISHES GENERAL NOTES

1. SURFACES TO BE PAINTED "MAIN" COLOR PER FINISH SCHEDULE EXCEPT WHERE NOTED OTHERWISE
2. UNIT VENTILATORS, PIPE ENCLOSURES, DOOR AND OPENING METAL FRAMES TO BE PAINTED PT-3, UNO
3. CLOSET/ALCOVE CEILING TO BE PAINTED TO MATCH WALLS
4. AT CLASSROOM ENTRY DOORS, CAREFULLY REFINISH INTERIOR FACES OF DOORS AND TRANSOMS
5. IN ROOMS WHERE VAT IS REMOVED, PROVIDE OVER THE ENTIRE FLOOR A CEMENTITIOUS OVERLAYMENT PRODUCT THAT IS ACCEPTABLE TO THE VCT MANUFACTURER AND IN THICKNESS RECOMMENDED BY THE VCT MANUFACTURER.
6. REFINISH ALL EXISTING WOOD SURFACES INCLUDING BUT NOT LIMITED TO DOORS, DOOR FRAMES, WINDOW FRAMES, WINDOW SILLS, BASEBOARDS, RAILS AND OTHER TRIM. REFINISHING SHALL INCLUDE THE FOLLOWING:
 - A. CLEAN TO REMOVE DIRT AND RESIDUE INCLUDING CRAZED AND BEADED VARNISH, ALL PRIOR AND MISC. PAINT APPLICATIONS. REMOVE ALL STAPLES, TACKS, PINS, TAPE, AND ANY OTHER MATERIAL ON WOOD SURFACE.
 - B. SAND AND CLEAN BETWEEN STAGES. PROVIDE ENOUGH TREATMENT REQUIRED TO BRING WOOD SURFACE TO ORIGINAL CONDITION.
 - C. FILL GOUGES AND HOLES WITH COMPATIBLE WOOD FILLER. TINT FILLER TO MATCH EXISTING STAINED FINISH.
 - D. AT WORN, DAMAGED, OR BLEACHED AREAS OF STAINED WOOD APPLY WIPING STAIN TO MATCH EXISTING ADJACENT AREAS. PROVIDE SUFFICIENT APPLICATIONS OF STAIN TO GIVE AN OVERALL EVEN STAINED WOOD APPEARANCE. CONSISTENT WITH THE ORIGINAL INTENT.
 - E. FINISH WITH 3 COATS OF WATERBASED POLYURETHANE VARNISH COMPATIBLE WITH THE EXISTING FINISH SYSTEM AND APPLIED IN ACCORDANCE WITH THE MANUFACTURER'S INSTRUCTIONS.

THE SCHOOL DISTRICT OF PHILADELPHIA

OFFICE OF CAPITAL PROGRAMS

440 NORTH BROAD STREET
PHILADELPHIA, PA 19130 - 4015
(215) 400 - 4730 | (215) 400 - 4731 (fax)
www.philcad.org

SEAL:

NAME (LICENSED PROFESSIONAL) DATE
STATE AND LICENSE NO. XXX/XX/20XX

THE SHEWARD PARTNERSHIP, LLC
1315 N. 22ND ST. PHILADELPHIA, PA 19103
215.751.9300



PRINCETON ENGINEERING SERVICES, PC
101 Morgan Lane - Suite 205, Plainsboro, NJ 08536
1.609.452.9700 www.princetonengineering.com

FINISH LEGEND

- FLOOR FINISHES**
- VCT-1
ARMSTRONG STANDARD EXCELRON
51803 PEARL WHITE
 - VCT-2
ARMSTRONG STANDARD EXCELRON
51886 LITTLE GREEN APPLE
 - VCT-3
ARMSTRONG STANDARD EXCELRON
51884 GREENERY
 - VCT-4
ARMSTRONG STANDARD EXCELRON
51867 CANTALOUPE
 - VCT-5
ARMSTRONG STANDARD EXCELRON
51813 PUMPKIN ORANGE
 - CT-1
12" X 24" PORCELAIN CERAMIC FLOOR TILE
- ACCENT TAG
EXTENT OF ACCENT WALL
AND BASE FINISHES. SEE
FINISH SCHEDULE.

BID DRAWINGS:

JANUARY 25, 2021

10	
9	
8	
7	
6	
5	
4	
3	
2	
1	1/25/21 BID DRAWINGS
NO.	DATE REVISION

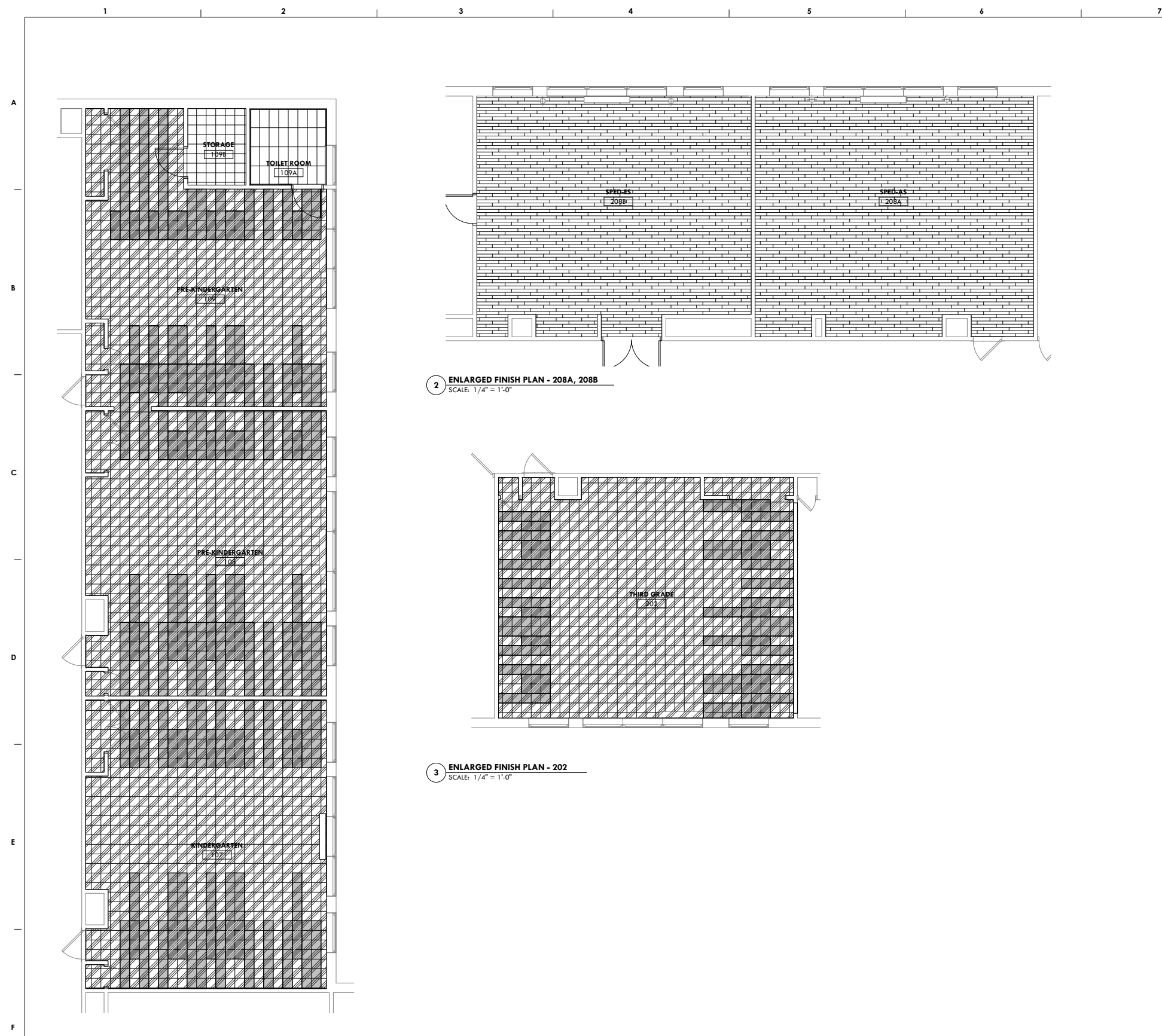
SCHOOL & LOCATION
**VARE-WASHINGTON
ELEMENTARY SCHOOL**
1198 S. 5TH ST.
PHILADELPHIA, PA 19147

PROJECT TITLE
CLASSROOM MODERNIZATION

DRAWING TITLE
ENLARGED FINISH PLANS

DRAWING SCALE AS INDICATED	
LOCATION NO. XXXX	FILE NO. XXX
DRAWN BY ECN	CHECKED BY GJC
GC: 8-028 OF 2020 / 21	PC: 8-029 OF 2020 / 21
EC: 8-030 OF 2020 / 21	

DRAWING NO.
A600
SHEET 14 OF 22



1 ENLARGED FINISH PLAN - 107, 108, 109
SCALE: 1/4" = 1'-0"

2 ENLARGED FINISH PLAN - 208A, 208B
SCALE: 1/4" = 1'-0"

3 ENLARGED FINISH PLAN - 202
SCALE: 1/4" = 1'-0"

FINISHES GENERAL NOTES

1. SURFACES TO BE PAINTED "MAIN" COLOR PER FINISH SCHEDULE EXCEPT WHERE NOTED OTHERWISE
2. UNIT VENTILATORS, PIPE ENCLOSURES, DOOR AND OPENING METAL FRAMES TO BE PAINTED PT-3, UNO
3. CLOSET/ALCOVE CEILING TO BE PAINTED TO MATCH WALLS
4. AT CLASSROOM ENTRY DOORS, CAREFULLY REFINISH INTERIOR FACES OF DOORS AND TRANSOMS
5. IN ROOMS WHERE VAT IS REMOVED, PROVIDE OVER THE ENTIRE FLOOR A CEMENTITIOUS OVERLAYMENT PRODUCT THAT IS ACCEPTABLE TO THE VCT MANUFACTURER AND IN THICKNESS RECOMMENDED BY THE VCT MANUFACTURER.
6. REFINISH ALL EXISTING WOOD SURFACES INCLUDING BUT NOT LIMITED TO DOORS, DOOR FRAMES, WINDOW FRAMES, WINDOW SILLS, BASEBOARDS, RAILS AND OTHER TRIM. REFINISHING SHALL INCLUDE THE FOLLOWING:
 - A. CLEAN TO REMOVE DIRT AND RESIDUE INCLUDING CRAZED AND BEADED VARNISH. ALL PRIOR AND MISC. PAINT APPLICATIONS. REMOVE ALL STAPLES, TACKS, PINS, TAPE, AND ANY OTHER MATERIAL ON WOOD SURFACE.
 - B. SAND AND CLEAN BETWEEN STAGES. PROVIDE ENOUGH TREATMENT REQUIRED TO BRING WOOD SURFACE TO ORIGINAL CONDITION.
 - C. FILL GOUGES AND HOLES WITH COMPATIBLE WOOD FILLER. TINT FILLER TO MATCH EXISTING STAINED FINISH.
 - D. AT WORN, DAMAGED, OR BLEACHED AREAS OF STAINED WOOD APPLY WIPING STAIN TO MATCH EXISTING ADJACENT AREAS. PROVIDE SUFFICIENT APPLICATIONS OF STAIN TO GIVE AN OVERALL EVEN STAINED WOOD APPEARANCE. CONSISTENT WITH THE ORIGINAL INTENT.
 - E. FINISH WITH 3 COATS OF WATERBASED POLYURETHANE VARNISH COMPATIBLE WITH THE EXISTING FINISH SYSTEM AND APPLIED IN ACCORDANCE WITH THE MANUFACTURER'S INSTRUCTIONS.

FINISH LEGEND

- FLOOR FINISHES**
- VCT-1
ARMSTRONG STANDARD EXCELOX
51803 PEARL WHITE
 - VCT-2
ARMSTRONG STANDARD EXCELOX
51886 LITTLE GREEN APPLE
 - VCT-3
ARMSTRONG STANDARD EXCELOX
51884 GREENERY
 - VCT-4
ARMSTRONG STANDARD EXCELOX
51887 CANTALOUPE
 - VCT-5
ARMSTRONG STANDARD EXCELOX
51813 PUMPKIN ORANGE
 - CT-1
12" X 24" PORCELAIN CERAMIC FLOOR TILE
- ACCENT TAG
EXTENT OF ACCENT WALL
AND BASE FINISHES. SEE
FINISH SCHEDULE.

BID DRAWINGS
JANUARY 25, 2021

10	
9	
8	
7	
6	
5	
4	
3	
2	
1	1/25/21 BID DRAWINGS
NO.	DATE REVISION

SCHOOL & LOCATION
**VARE-WASHINGTON
ELEMENTARY SCHOOL**
1198 S. 5TH ST.
PHILADELPHIA, PA 19147

PROJECT TITLE
CLASSROOM MODERNIZATION

DRAWING TITLE
ENLARGED FINISH PLANS

DRAWING SCALE AS INDICATED	
LOCATION NO. XXXX	FILE NO. XXX
DRAWN BY ECN	CHECKED BY GJC
GC: 8-028 OF 2020 / 21	PC: 8-029 OF 2020 / 21
EC: 8-030 OF 2020 / 21	

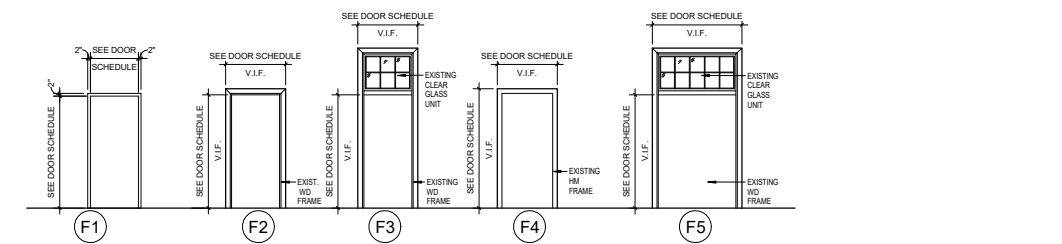
DRAWING NO.
A601
SHEET 15 OF 22

DOOR SCHEDULE (EXISTING)

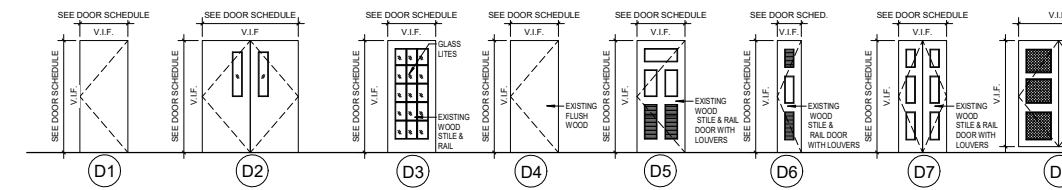
DOOR NO.	TO ROOM NO.	TO ROOM NAME	DOOR						FRAME			HARDWARE		COMMENTS	
			TYPE	WIDTH	HEIGHT	THICKNESS	MATERIAL	FINISH	GLAZING	TYPE	MATERIAL	FINISH	SET NO.		NOTES
Level 1															
101	101	FIRST GRADE	D19	5'-4"	7'-0"	0'-2"	WD	STN		F2	WD	STN	8.0		
101A	101	FIRST GRADE	D6	2'-2"	7'-0"	0'-2"	WD	STN		F2	WD	STN	6.0		
101B	101	FIRST GRADE	D8	5'-10"	7'-0"	0'-2"	WD	STN		F2	WD	STN	5.0		
101C	101	FIRST GRADE	D8	5'-10"	7'-0"	0'-2"	WD	STN		F2	WD	STN	5.0		
101D	101	FIRST GRADE	D9	3'-3"	7'-0"	0'-2"	WD	STN		F2	WD	STN	7.0		
102	102	KINDERGARTEN	91	6'-0"	7'-0"	0'-2"	WD	STN		F2	WD	STN	8.0		
102A	102	KINDERGARTEN	D8	5'-10"	7'-0"	0'-2"	WD	STN		F2	WD	STN	4.0		
102B	102	KINDERGARTEN	D6	2'-2"	7'-0"	0'-2"	WD	STN		F2	WD	STN	7.0		
103	103	KINDERGARTEN	D3	3'-0"	7'-0"	0'-2"	WD	STN		F2	WD	STN	10.0		
103A	103	KINDERGARTEN	D20	1'-9"	7'-0"	0'-2"	WD	STN		F2	WD	STN	6.0		
103B	103	KINDERGARTEN	D8	5'-10"	7'-0"	0'-2"	WD	STN		F2	WD	STN	5.0		
103C	102	KINDERGARTEN	D8	5'-10"	7'-0"	0'-2"	WD	STN		F2	WD	STN	4.0		
103D	102	KINDERGARTEN	D9	3'-3"	7'-0"	0'-2"	WD	STN		F2	WD	STN	2.0		
104	104	FIRST GRADE	D4	3'-0"	7'-0"	0'-2"	WD	STN		F2	WD	STN	10.0		
104A	104	FIRST GRADE	D20	1'-9"	7'-0"	0'-2"	WD	STN		F2	WD	STN	7.0		
104B	104	FIRST GRADE	D8	5'-10"	7'-0"	0'-2"	WD	STN		F2	WD	STN	5.0		
105	105	SECOND GRADE	91	6'-0"	7'-0"	0'-2"	WD	STN		F2	WD	STN	9.0		
105A	105	SECOND GRADE	D8	5'-10"	7'-0"	0'-2"	WD	STN		F2	WD	STN	5.0		
105B	105	SECOND GRADE	D20	1'-9"	7'-0"	0'-2"	WD	STN		F2	WD	STN	6.0		
105C	105	SECOND GRADE	D8	5'-10"	7'-0"	0'-2"	WD	STN		F2	WD	STN	4.0		
105D	105	SECOND GRADE	D9	3'-3"	7'-0"	0'-2"	WD	STN		F2	WD	STN	7.0		
106	106	THIRD GRADE	91	6'-0"	7'-0"	0'-2"	WD	STN		F2	WD	STN	8.0		
106A	106	THIRD GRADE	D6	2'-2"	7'-0"	0'-2"	WD	STN		F2	WD	STN	6.0		
106B	106	THIRD GRADE	D8	5'-10"	7'-0"	0'-2"	WD	STN		F2	WD	STN	4.0		
106C	106	THIRD GRADE	D8	5'-10"	7'-0"	0'-2"	WD	STN		F2	WD	STN	4.0		
106D	106	THIRD GRADE	D9	3'-3"	7'-0"	0'-2"	WD	STN		F2	WD	STN	10.0		
107	107	KINDERGARTEN	D3	3'-0"	7'-0"	0'-2"	WD	STN		F2	WD	STN	7.0		
107A	107	KINDERGARTEN	D6	2'-2"	7'-0"	0'-2"	WD	STN		F2	WD	STN	6.0		
107B	107	KINDERGARTEN	D19	5'-4"	7'-0"	0'-2"	WD	STN		F2	WD	STN	4.0		
108	108	PRE-KINDERGARTEN	D3	3'-0"	7'-0"	0'-2"	WD	STN		F2	WD	STN	10.0		
108A	108	PRE-KINDERGARTEN	D6	2'-2"	7'-0"	0'-2"	WD	STN		F2	WD	STN	6.0		
108B	108	PRE-KINDERGARTEN	D8	5'-10"	7'-0"	0'-2"	WD	STN		F2	WD	STN	5.0		
109	109	PRE-KINDERGARTEN	D3	3'-0"	7'-0"	0'-2"	WD	STN		F2	WD	STN	10.0		
109A	109	PRE-KINDERGARTEN	D6	2'-2"	7'-0"	0'-2"	WD	STN		F2	WD	STN	7.0		
109B	109	PRE-KINDERGARTEN	D8	5'-10"	7'-0"	0'-2"	WD	STN		F2	WD	STN	3.0		
Level 2															
202	202	THIRD GRADE	D3	3'-0"	7'-0"	0'-2"	WD	STN		F3	WD	STN	10.0		
202A	202	THIRD GRADE	D8	5'-10"	7'-0"	0'-2"	WD	STN		F2	WD	STN	3.0		
202B	202	THIRD GRADE	D6	2'-0"	7'-0"	0'-2"	WD	STN		F2	WD	STN	6.0		
204	204	SECOND GRADE	D3	3'-0"	7'-0"	0'-2"	WD	STN		F3	WD	STN	10.0		
204A	204	SECOND GRADE	D20	1'-9"	7'-0"	0'-2"	WD	STN		F2	WD	STN	6.0		
204B	204	SECOND GRADE	D8	5'-10"	7'-0"	0'-2"	WD	STN		F2	WD	STN	3.0		
205	205	SPED-AS	D3	3'-0"	7'-0"	0'-2"	WD	STN		F3	WD	STN	10.0		
205A	205	SPED-AS	D20	1'-9"	7'-0"	0'-2"	WD	STN		F2	WD	STN	6.0		
205B	205	SPED-AS	D8	5'-10"	7'-0"	0'-2"	WD	STN		F2	WD	STN	4.0		
206	206	THIRD GRADE	D3	3'-0"	7'-0"	0'-2"	WD	STN		F3	WD	STN	10.0		
206A	206	THIRD GRADE	D20	1'-9"	7'-0"	0'-2"	WD	STN		F2	WD	STN	6.0		
206B	206	THIRD GRADE	D8	5'-10"	7'-0"	0'-2"	WD	STN		F2	WD	STN	5.0		
208A	208A	SPED-AS	D3	3'-0"	7'-0"	0'-2"	WD	STN		F2	WD	STN	10.0		

DOOR SCHEDULE (NEW)

DOOR NO.	TO ROOM NO.	TO ROOM NAME	DOOR						FRAME			HARDWARE		COMMENTS	
			TYPE	WIDTH	HEIGHT	THICKNESS	MATERIAL	FINISH	GLAZING	TYPE	MATERIAL	FINISH	SET NO.		NOTES
Level 1															
109C	109B	STORAGE	D2	3'-0"	7'-0"	0'-1 3/4"	WD	STN		HM	PTD				
109D	109	PRE-KINDERGARTEN	D2	3'-0"	7'-0"	0'-1 3/4"	WD	STN		HM	PTD				
Level 2															
208B	208B	SPED-ES	D8	6'-0"	7'-0"	0'-1 3/4"	WD	STN		WD	STN				
208C			D2	3'-0"	7'-0"	0'-1 3/4"	WD	STN		HM	PTD				



1 FRAME TYPES
SCALE: 1/4" = 1'-0"



2 DOOR TYPES
SCALE: 1/4" = 1'-0"

HARDWARE SETS

SET: 1.0
DOORS: 109D

3 HINGE, FULL MORTISE TA2714 4-1/2" X 4-1/2" US26D MK
1 PASSAGE LATCH PB 5401LN 626 YA
1 DOOR STOP 403 (OR) 441CU US26D RO
3 SILENCER 608 (OR) 609 RO

SET: 2.0
DOORS: 103D

3 HINGE, FULL MORTISE TA2714 4-1/2" X 4-1/2" US26D MK
1 PASSAGE LATCH PB 5401LN 626 YA
1 SURF OVERHEAD STOP 10-X36 652 RF
3 SILENCER 608 (OR) 609 RO

SET: 3.0
DOORS: 109B, 202A, 204B

6 HINGE, FULL MORTISE TA2714 4-1/2" X 4-1/2" US26D MK
1 DUST PROOF STRIKE 570 US26D RO
2 FLUSH BOLT (MANUAL) 555 (OR) 557 US26D RO
1 CLASSROOM LOCK R PB 5408LN 626 YA
1 CYLINDER CORE (LFRC) CR8027 630 RU
2 DOOR STOP 403 (OR) 441CU US26D RO
2 SILENCER 608 (OR) 609 RO

SET: 4.0
DOORS: 102A, 103C, 105C, 106B, 106C, 107B, 205B

6 HINGE, FULL MORTISE TA2714 4-1/2" X 4-1/2" US26D MK
1 DUST PROOF STRIKE 570 US26D RO
2 FLUSH BOLT (MANUAL) 555 (OR) 557 US26D RO
1 CLASSROOM LOCK R PB 5408LN 626 YA
1 CYLINDER CORE (LFRC) CR8027 630 RU
1 SURF OVERHEAD STOP 10-X36 652 RF
1 DOOR STOP 403 (OR) 441CU US26D RO
2 SILENCER 608 (OR) 609 RO

SET: 5.0
DOORS: 101B, 101C, 103B, 104B, 105A, 108B, 206B

6 HINGE, FULL MORTISE TA2714 4-1/2" X 4-1/2" US26D MK
1 DUST PROOF STRIKE 570 US26D RO
2 FLUSH BOLT (MANUAL) 555 (OR) 557 US26D RO
1 CLASSROOM LOCK R PB 5408LN 626 YA
1 CYLINDER CORE (LFRC) CR8027 630 RU
1 SURF OVERHEAD STOP 10-X36 652 RF
1 DOOR STOP 403 (OR) 441CU US26D RO
2 SILENCER 608 (OR) 609 RO

SET: 6.0
DOORS: 101A, 103A, 105B, 106A, 107A, 108A, 109C, 202B, 204A, 205A, 206A

3 HINGE, FULL MORTISE TA2714 4-1/2" X 4-1/2" US26D MK
1 CLASSROOM LOCK R PB 5408LN 626 YA
1 CYLINDER CORE (LFRC) CR8027 630 RU
1 DOOR STOP 403 (OR) 441CU US26D RO
3 SILENCER 608 (OR) 609 RO

SET: 7.0
DOORS: 101D, 102B, 104A, 105D, 106D, 109A

3 HINGE, FULL MORTISE TA2714 4-1/2" X 4-1/2" US26D MK
1 CLASSROOM LOCK R PB 5408LN 626 YA
1 CYLINDER CORE (LFRC) CR8027 630 RU
1 SURF OVERHEAD STOP 10-X36 652 RF
3 SILENCER 608 (OR) 609 RO

SET: 8.0
DOORS: 101, 102, 106

6 HINGE, FULL MORTISE, HVY WT T4A3786 4-1/2" X 4-1/2" US26D MK
1 DUST PROOF STRIKE 570 US26D RO
2 FLUSH BOLT (MANUAL) 555 (OR) 557 US26D RO
1 INTRUDER CLASSROOM LOCK R PB 5418LN 626 YA
1 CYLINDER CORE (LFRC) CR8027 630 RU
1 CYLINDER CORE (IS, LFRC) CR8027 606 RU
1 DOOR CLOSER PR7500 M SN-134 689 NO
2 KICK PLATE K1050 8" HVBEV US32D RO
1 DOOR STOP 403 (OR) 441CU US26D RO
2 SILENCER 608 (OR) 609 RO

SET: 9.0
DOORS: 105

6 HINGE, FULL MORTISE, HVY WT T4A3786 4-1/2" X 4-1/2" US26D MK
1 DUST PROOF STRIKE 570 US26D RO
2 FLUSH BOLT (MANUAL) 555 (OR) 557 US26D RO
1 INTRUDER CLASSROOM LOCK R PB 5418LN 626 YA
1 CYLINDER CORE (LFRC) CR8027 630 RU
1 CYLINDER CORE (IS, LFRC) CR8027 606 RU
1 SURF OVERHEAD STOP 10-X36 652 RF
1 DOOR CLOSER PR7500 M SN-134 689 NO
2 KICK PLATE K1050 8" HVBEV US32D RO
1 DOOR STOP 403 (OR) 441CU US26D RO
2 SILENCER 608 (OR) 609 RO

SET: 10.0
DOORS: 103, 104, 107, 108, 109, 202, 204, 205, 206, 208A

3 HINGE, FULL MORTISE, HVY WT T4A3786 4-1/2" X 4-1/2" US26D MK
1 INTRUDER CLASSROOM LOCK R PB 5418LN 626 YA
1 CYLINDER CORE (LFRC) CR8027 630 RU
1 CYLINDER CORE (IS, LFRC) CR8027 606 RU
1 DOOR CLOSER PR7500 M SN-134 689 NO
1 KICK PLATE K1050 8" HVBEV US32D RO
1 DOOR STOP 403 (OR) 441CU US26D RO
3 SILENCER 608 (OR) 609 RO

NOTES: COORDINATE NEW HARDWARE REQUIREMENTS WITH EXISTING CONDITIONS.

DOORS - GENERAL NOTES:

- EXISTING DOORS AND DOOR FRAMES ARE TO BE RETAINED, EXCEPT WHERE NEW HARDWARE ITEMS ARE SCHEDULED IT IS THE INTENTION ALSO TO RETAIN EXISTING HARDWARE. PROTECT EXISTING DOORS, DOOR HARDWARE, DOOR AND DOOR FRAME GLAZING, AND DOOR HARDWARE THAT IS TO REMAIN FROM DAMAGE DURING THE COURSE OF THE WORK.
- OVERHAUL ALL CLASSROOM ENTRY DOOR AND ALL STORAGE CLOSET DOORS IN EACH CLASSROOM. OVERHAULING TO INCLUDE ADJUSTING AND LUBRICATING HINGES AND OTHER MOVING PARTS FOR SMOOTH OPERATION. MAKING MINOR MODIFICATIONS TO DOORS SUCH AS PLANING OR SANDING WHERE THEY ARE STICKING OR BINDING IN FRAMES, CLEANING RETAINED HARDWARE, REPLACING MISSING SCREWS, AND POLISHING METAL HARDWARE FINISHES.
- DOOR SIZES GIVEN ARE APPROXIMATE AND NOMINAL. VERIFY OVERALL DOOR SIZE, RAIL, STYLE, LIFE, AND PANEL SIZES AND PLACE IN THE FIELD PRIOR TO ORDERING NEW DOOR. MANUFACTURE DOORS TO FIT THE EXISTING OPENINGS. LIMIT FIELD MODIFICATIONS TO PLANING OR SANDING. MINOR ADJUSTMENTS AS NECESSARY TO GET A GOOD FIT OF THE NEW DOOR TO THE EXISTING OPENING.
- COORDINATE NEW HARDWARE WITH THE EXISTING CONDITIONS PRIOR TO SUBMITTING HARDWARE FOR REVIEW AND APPROVAL. EXISTING FRAMES ARE WOOD AND ARE TO REMAIN UNLESS NOTED OTHERWISE. PREPARE WOOD FRAMES AS NECESSARY TO RECEIVE NEW HARDWARE. AND REPAIR WOOD FRAMES WHERE OLD HARDWARE PREPS ARE NOT CONCEALED BY NEW HARDWARE. REMOVE PADLOCK HASPS AND FUL HOLES AT CLOSET AND STORAGE ROOM DOORS.
- LAM - LAMINATED SAFETY GLASS, OVERALL 5/16" THICK WITH 0.007" THICK PVB INTERLAYER.
- STP - PRIVACY GLASS WITH STIPPLE PATTERN TO MATCH EXISTING GIRLS AND BOYS TOILET ROOM DOOR LITES.
- TEMP - 1/4" THICKNESS TEMPERED SAFETY GLASS.
- STN - STAIN AND FINISH DOOR TO MATCH EXISTING FRAME AND ADJACENT DOORS. STAIN COLOR DARK BROWN TO MATCH EXISTING. REFINISH EXISTING FRAME TO MATCH EXISTING ADJACENT WOOD FINISHES.
- REFINISHING OF WOOD DOORS TO INCLUDE REMOVAL OF ALL STAPLES, TACKS, PINE, ETC. REMOVAL OF ALL PAINT FROM ADJACENT SURFACES. REMOVAL OF OLD STAIN BUILD-UP, REAPPLICATIONS AND CRANGEBEATING. WOOD TO BE RESTORED TO ORIGINAL UNLAMEISHED FINISH.

THE SCHOOL DISTRICT OF PHILADELPHIA
OFFICE OF CAPITAL PROGRAMS
440 NORTH BROAD STREET
PHILADELPHIA, PA 19130 - 4015
(215) 400 - 4730 | (215) 400 - 4731 (fax)
www.philad.org

THE SHEWARD PARTNERSHIP, LLC
1315 N. 9TH STREET, SUITE 200
PHILADELPHIA, PA 19107
TEL: 215.751.9300
FAX: 215.751.9302

PES
PRINCETON ENGINEERING SERVICES, PC
101 Morgan Lane - Suite 205, Plainsboro, NJ 08536
1.609.452.9700 www.princetonengineering.com

BID DRAWINGS
JANUARY 25, 2021

10	
9	
8	
7	
6	
5	
4	
3	
2	
1	1/25/21 BID DRAWINGS
NO.	DATE REVISION

SCHOOL & LOCATION
VARE-WASHINGTON ELEMENTARY SCHOOL
1198 S. 5TH ST.
PHILADELPHIA, PA 19147

PROJECT TITLE
CLASSROOM MODERNIZATION
DRAWING TITLE
DOOR SCHEDULE AND DETAILS

DRAWING SCALE AS INDICATED	
LOCATION NO. XXXX	FILE NO. XXXX
DRAWN BY EGN	CHECKED BY GJC
GC: 8-028 OF 2020 / 21	PC: 8-027 OF 2020 / 21
EC: 8-030 OF 2020 / 21	

DRAWING NO.
A900
SHEET 16 OF 22