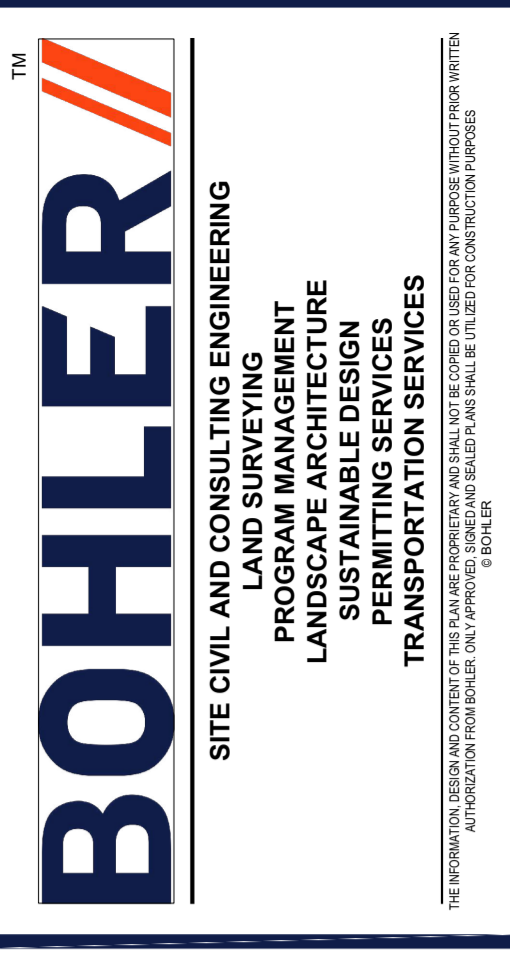


APPROVED
FOR ZONING ONLY
2/21/20

WHEN YOUR PLANS CONTAIN ANY OMISSION,
ERROR OR DEVIATION FROM THESE APPROVED
PLANS IT WILL REQUIRE THE APPROVAL OF THE
DEPARTMENT OF LICENSING & INSPECTIONS.

[illegible]

THIS DRAWING IS INTENDED FOR MUNICIPAL AND/OR AGENCY
REVIEW AND APPROVAL. IT IS NOT INTENDED AS A CONSTRUCTION
DOCUMENT UNLESS INDICATED OTHERWISE.

PROJECT:

900-58 N. 9TH STREET

BOHLEP //

1515 MARKET STREET, SUITE 920
SAN ANTONIO, TX 78205

Phone: (267) 402-3400

Fax: (267) 402-3401
www.BohlerEngineering.com

REGISTERED
PROFESSIONAL

W. L. ELIUS

SHEET TITLE:

SITE PLAN

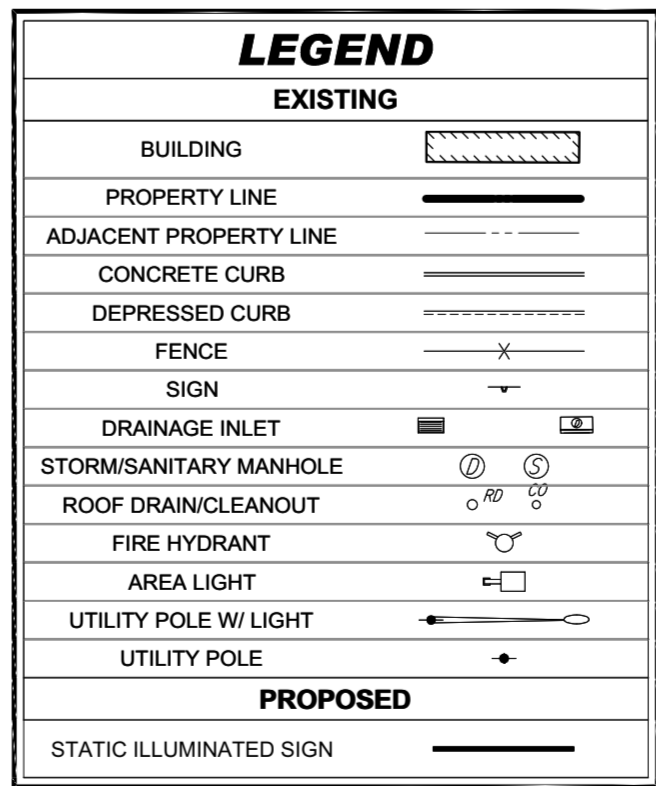
SITE PLAN

SHEET NUMBER: _____

1

1

ORG. DATE - 2020/12/15



SIGNAGE MATRIX							
	SIGN	FRONTAGE	ALLOWABLE AREA	PROPOSED TOTAL AREA	AREA PER SIGN		
EAST		536'-0"	2 SF/LINEAR FT OF FRONTAGE PER LONG ELEVATION = 536'x2= 1072 SF	-	-	-	
NORTH		98'-0"	3 SF/LINEAR FT OF FRONTAGE PER SHORT ELEVATION = 98'x3 = 294 SF	-	-	-	
SOUTH	A	98'	3 SF/LINEAR FT OF FRONTAGE PER SHORT ELEVATION = 98'x3 = 294 SF	48 SF	16 SF	4'X4'	PREV APPROVED PER #ZP-2020-006801
	B				256 SF	16'X16'	
WEST	A	536'-0"	2 SF/LINEAR FT OF FRONTAGE PER LONG ELEVATION = 536'x2= 1072 SF	142 SF	16 SF	4'X4'	PREV APPROVED PER #ZP-2020-006801

GENERAL NOTES

- | | | |
|----|---|---|
| 1. | THIS PLAN REFERENCES
A SURVEY PREPARED BY: | CONTROL POINT ASSOCIATES, INC.
NEW BRITAIN CORPORATE CENTER
1600 MAJOR DRIVE, SUITE 210
CHAMFORT, PA. 16814
JAMES WOOD C. P.L.S. #5U75250 |
| | ENTITLED: | ALTAMON LAND TITLE SURVEY
PORT QUAMER PROPERTY OWNER, LLC
NORTH 4TH STREET NORTH 4TH STREET
POPULAR STREET & WEST GRANGE AVENUE
LOTS 494, 232, 206, 185, 225, 208, 199, 198
CITY & COUNTY OF PHILADELPHIA, 14TH WARD
HIGWAY DISTRICT 83, PORT QUAMER DISTRICT
COMMONWEALTH OF PENNSYLVANIA |
| | FILE #: | CD-160590
DATED: 03/06/2017
REVISED: 06/26/2016 |
| 2. | OWNER APPLICANT: | PORT QUAMER PROPERTY OWNER, LLC
ELISE HULTER
1 WINDING DRIVE, SUITE 200
PHILADELPHIA, PA. 19131
CITY OF PHILADELPHIA |
| 3. | SITE DATA: | 900-658 N 17TH STREET
PHILADELPHIA, PA. 19123
CITY OF PHILADELPHIA |
| | EXISTING USE: 350 MULTIFAMILY UNITS AND ACCESSORY RESIDENTIAL AMENITY SPACE, 3 COMMERCIAL SPACES, 4 OFFICE SPACES | |
| | BOHLER ENGINEERING BUSINESS PIVULEE NUMBER IS 650139. | |
| 5. | ALL IMPROVEMENTS SHALL BE CONSTRUCTED IN ACCORDANCE WITH THE STANDARD AND SPECIFICATIONS OF PENNDOT. | |
| | ALL PAVEMENT MATERIALS SHALL COMPLY WITH PHILADELPHIA STANDARDS. | |
| 7. | ALL MATERIALS ARE TO MATCH EXISTING CONDITIONS. | |

[illegible]

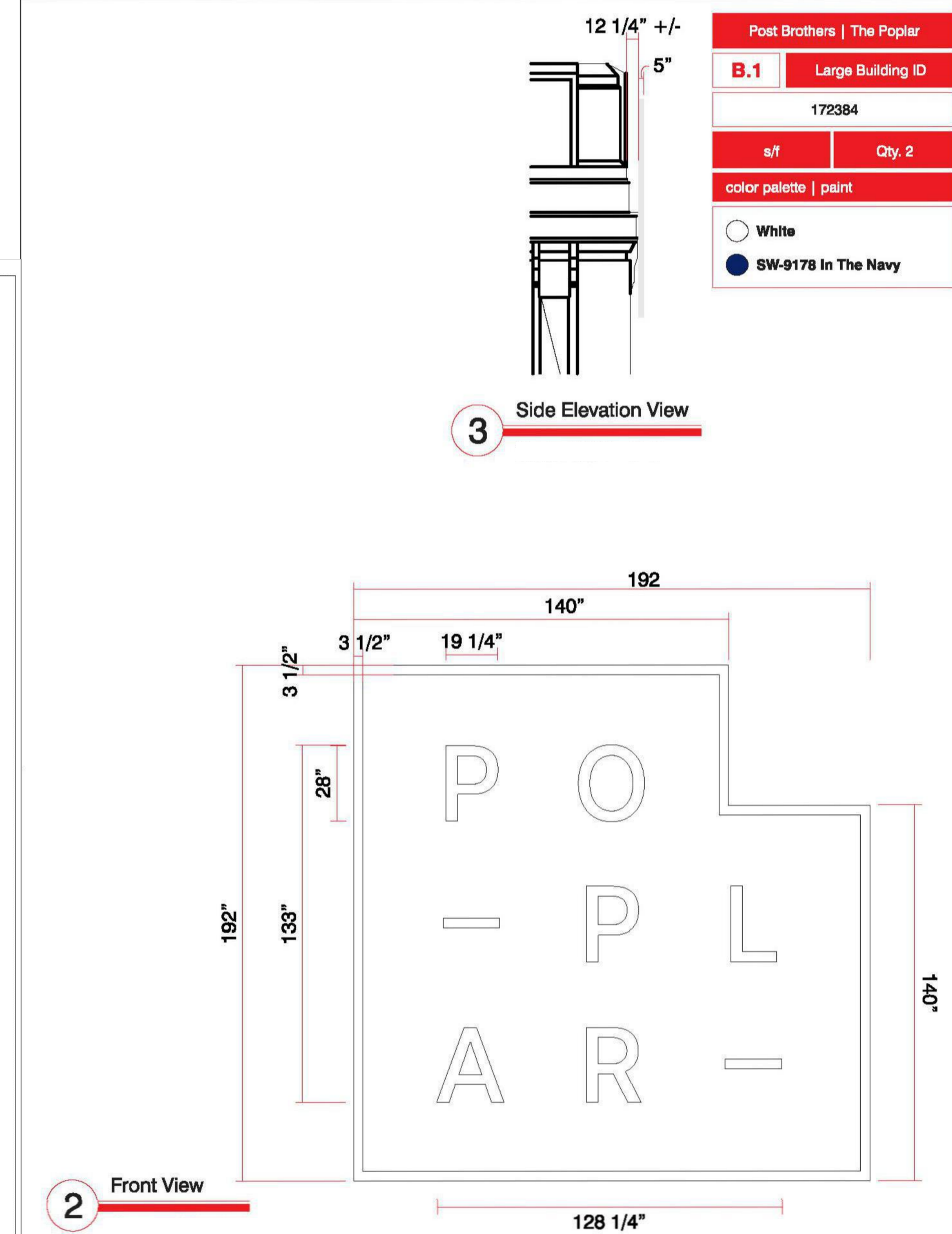
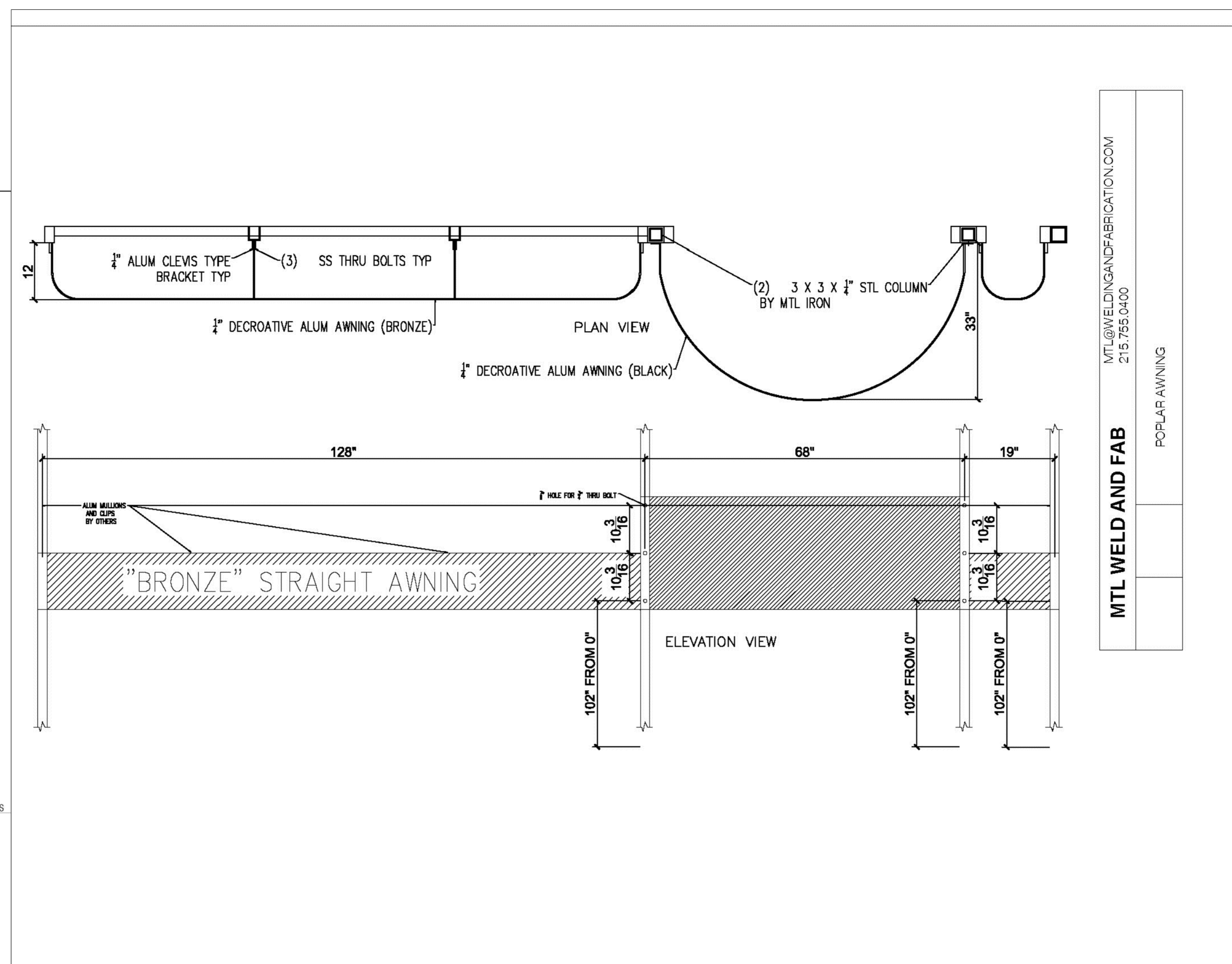
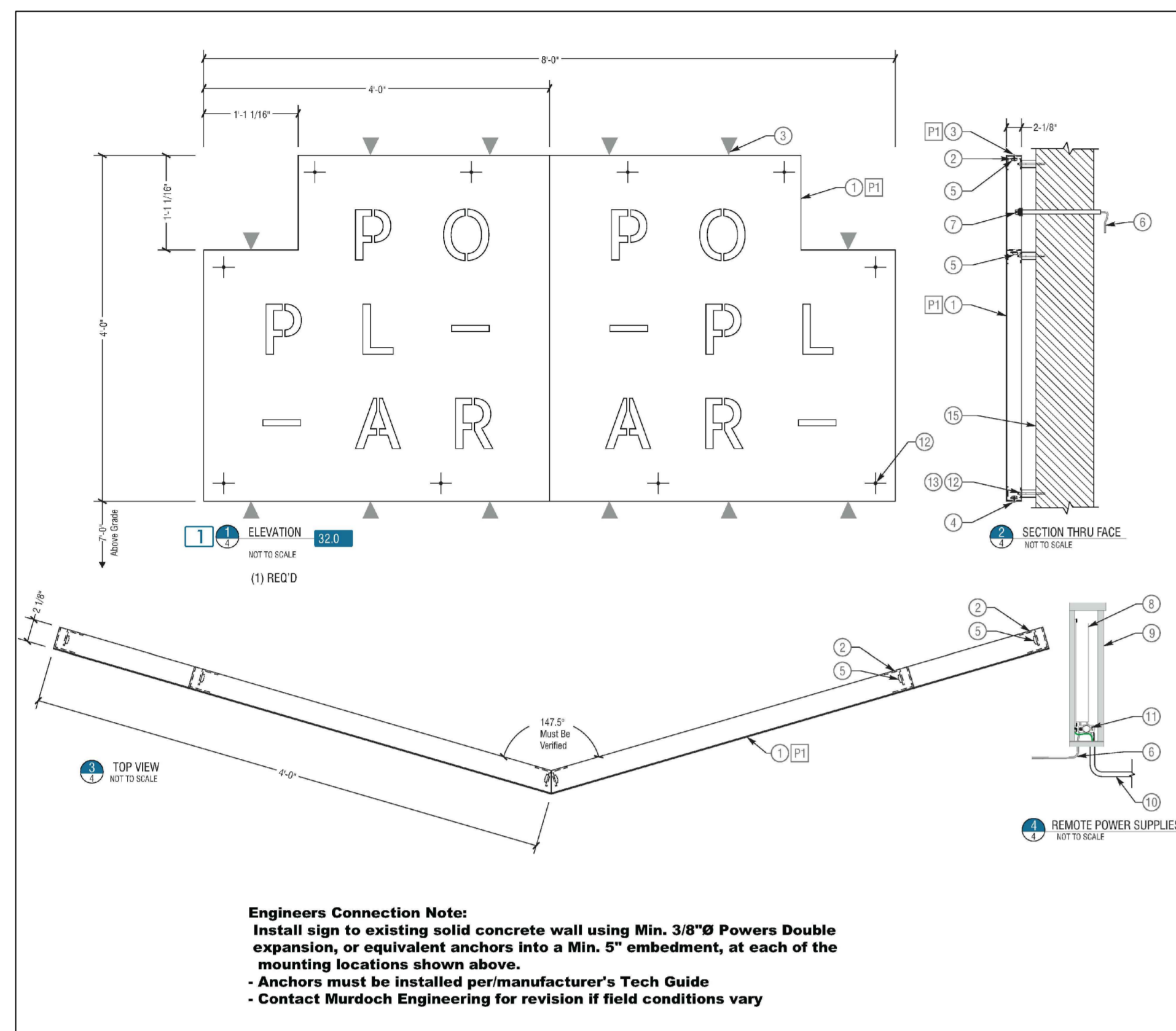
THIS DRAWING IS INTENDED FOR MUNICIPAL AND/OR AGENCY
REVIEW AND APPROVAL. IT IS NOT INTENDED AS A CONSTRUCTION
DOCUMENT UNLESS INDICATED OTHERWISE.

PROJECT:

FOR _____

© 2005 Blackwell Publishing Ltd, *Journal of Internal Medicine* 258: 103–110

2



BOHLER

SITE CIVIL AND CONSULTING ENGINEERING
LAND SURVEYING
PROGRAM MANAGEMENT
LAND DEVELOPMENT
SUSTAINABLE DESIGN
PERMITTING SERVICES
TRANSPORTATION SERVICES

[illegible]

**NOT APPROVED FOR
CONSTRUCTION**

THIS DRAWING IS INTENDED FOR MUNICIPAL AND/OR AGENCY
REVIEW AND APPROVAL. IT IS NOT INTENDED AS A CONSTRUCTION
DOCUMENT UNLESS INDICATED OTHERWISE.

PROJECT No.:	PP203249
DRAWN BY:	AW
CHECKED BY:	SU
DATE:	2020/12/15
CAD I.D.:	PP203249-BASE-0 PACKAGE 1

**ZONING PLANS PROPOSED
BUILDING IDENTIFICATION
SIGNAGE AND AWNING**

_____ FOR _____

THE POPLAR

**PROPOSED MIXED-USE
DEVELOPMENT**

**900-58 N. 9TH STREET
PHILADELPHIA, PA 19123**

BOHLER//



SHEET TITLE:

SHEET NUMBER: _____

ORG. DATE - 2020/12/15

APPROVED
FOR ZONING ONLY
2/21/20

WHEN YOUR PLANS CONTAIN ANY OMISSION, ERROR OR DEVIANATION FROM THESE APPROVED PLANS, IT WILL REQUIRE THE APPROVAL OF THE DEPARTMENT OF LICENSING & INSPECTIONS.

Applied Electronically by L&I User:



BOHLER ENGINEERING

CIVIL & CONSTRUCTION ENGINEERS ■ SURVEYORS ■ TRAFFIC CONSULTANTS ■ ENVIRONMENTAL & GEOTECHNICAL ENGINEERS
OTHER OFFICE LOCATIONS

WARREN, NJ ■ ALBANY, NY ■ WHITE PLAINS, NY ■ RONKONKOMA, NY ■ WARRENTON, VA ■ STERLING VA
SOUTHBORO, MA ■ TOWSON, MD ■ BOWIE, MD ■ CENTER VALLEY, PA ■ CHALFONT, PA ■ FORT LAUDERDALE, FL

Center City, Philadelphia Office
1515 Market Street
Suite 920
Philadelphia, PA 19102
Phone: (267) 402-3400
Fax: (267) 402-3401
www.bohlereng.com

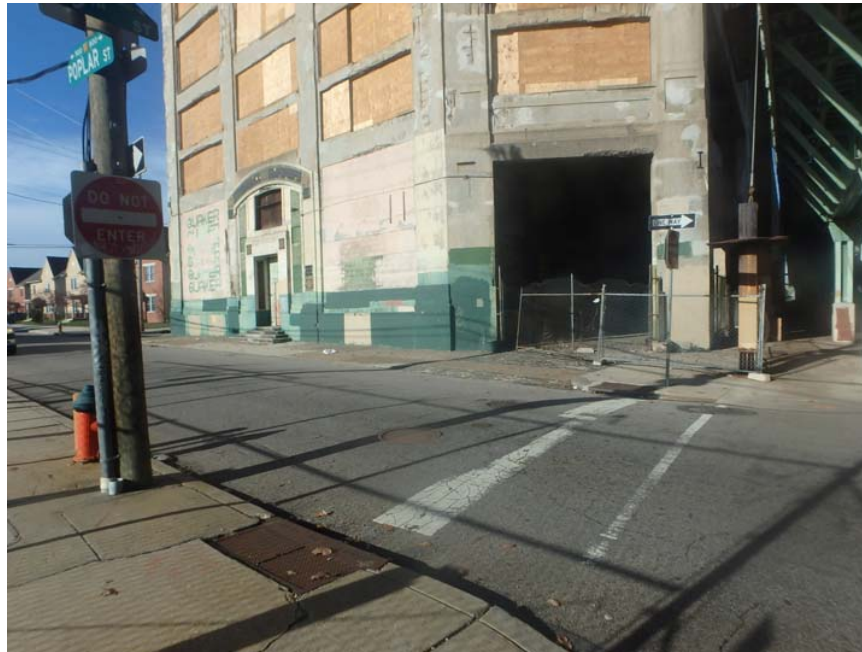


Photo #1: Northwest Along Poplar Street from 9th Street



Photo #2: North Along 9th Street from Poplar Street



BOHLER ENGINEERING, INC.

CIVIL & CONSTRUCTION ENGINEERS ■ SURVEYORS ■ TRAFFIC CONSULTANTS ■ ENVIRONMENTAL & GEOTECHNICAL ENGINEERS
OTHER OFFICE LOCATIONS

WARREN, NJ ■ ALBANY, NY ■ WHITE PLAINS, NY ■ RONKONKOMA, NY ■ WARRENTON, VA ■ STERLING VA
SOUTHBORO, MA ■ TOWSON, MD ■ BOWIE, MD ■ CENTER VALLEY, PA ■ CHALFONT, PA ■ FORT LAUDERDALE, FL

Center City, Philadelphia Office
1515 Market Street
Suite 920
Philadelphia, PA 19102
Phone: (267) 402-3400
Fax: (267) 402-3401
www.bohlereng.com



Photo #3: North Along 9th Street from Poplar Street



Photo #4: South Along 9th Street towards Poplar Street



BOHLER ENGINEERING, INC.

CIVIL & CONSTRUCTION ENGINEERS ■ SURVEYORS ■ TRAFFIC CONSULTANTS ■ ENVIRONMENTAL & GEOTECHNICAL ENGINEERS
OTHER OFFICE LOCATIONS

WARREN, NJ ■ ALBANY, NY ■ WHITE PLAINS, NY ■ RONKONKOMA, NY ■ WARRENTON, VA ■ STERLING VA
SOUTHBORO, MA ■ TOWSON, MD ■ BOWIE, MD ■ CENTER VALLEY, PA ■ CHALFONT, PA ■ FORT LAUDERDALE, FL

Center City, Philadelphia Office
1515 Market Street
Suite 920
Philadelphia, PA 19102
Phone: (267) 402-3400
Fax: (267) 402-3401
www.bohlereng.com



Photo #5: West Along Poplar Street from 9th Street



Photo #6: East Along Poplar Street from Percy Street



BOHLER ENGINEERING, INC.

CIVIL & CONSTRUCTION ENGINEERS ■ SURVEYORS ■ TRAFFIC CONSULTANTS ■ ENVIRONMENTAL & GEOTECHNICAL ENGINEERS
OTHER OFFICE LOCATIONS

WARREN, NJ ■ ALBANY, NY ■ WHITE PLAINS, NY ■ RONKONKOMA, NY ■ WARRENTON, VA ■ STERLING VA
SOUTHBORO, MA ■ TOWSON, MD ■ BOWIE, MD ■ CENTER VALLEY, PA ■ CHALFONT, PA ■ FORT LAUDERDALE, FL

Center City, Philadelphia Office
1515 Market Street
Suite 920
Philadelphia, PA 19102
Phone: (267) 402-3400
Fax: (267) 402-3401
www.bohlereng.com



Photo #7: North Along Percy Street from Poplar Street



Photo #8: North Along Percy Street from Poplar Street



BOHLER ENGINEERING, INC.

CIVIL & CONSTRUCTION ENGINEERS ■ SURVEYORS ■ TRAFFIC CONSULTANTS ■ ENVIRONMENTAL & GEOTECHNICAL ENGINEERS
OTHER OFFICE LOCATIONS

WARREN, NJ ■ ALBANY, NY ■ WHITE PLAINS, NY ■ RONKONKOMA, NY ■ WARRENTON, VA ■ STERLING VA
SOUTHBORO, MA ■ TOWSON, MD ■ BOWIE, MD ■ CENTER VALLEY, PA ■ CHALFONT, PA ■ FORT LAUDERDALE, FL

Center City, Philadelphia Office
1515 Market Street
Suite 920
Philadelphia, PA 19102
Phone: (267) 402-3400
Fax: (267) 402-3401
www.bohlereng.com



Photo #9: North Along Percy Street from Poplar Street



Photo #10: South Along Percy Street towards Poplar Street

SloanLED Prism

Premium 12V LED channel letter lighting solution

PERFORMANCE SERIES

Specifications

Dimensions L × W × H Whites, HO 2.75 in × 0.75 in × 0.44 in
(70 mm × 19 mm × 11 mm)
Colors 2.75 in × 0.75 in × 0.50 in
(70 mm × 19 mm × 13 mm)

LEDs per module 3

Operating temperature SloanLED Prism -40° C to +70° C
HO -40° C to +60° C

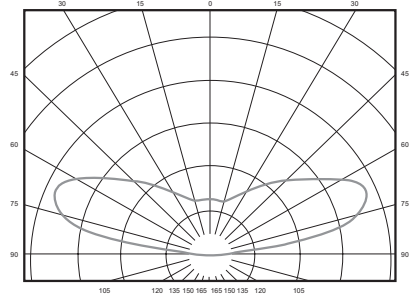
Protection class IP66 & IP68*

Binning MacAdam Step 3

Life rating SloanLED Prism, >60,000 hours
HO 24 VDC >50,000 hours
HO 12 VDC >50,000 hours

Fastening Peel-n-stick and mechanical

Luminous
Intensity
Distribution



Whites

Model	Modules per foot/meter	Color temperature	Part number	Optimal can depth	Power per module	Lumens per module (nominal)	Efficacy	Power capacity per SloanLED 60 W 12 VDC power supply	Packaging of 5 trays per carton
SloanLED Prism	1/ft (3.3/m)	6500 K	701269-6WSJ2-MB	3-8" (75-200 mm)	1.12 W	124	111 lm/W	48 modules (48.0 ft / 14.6 m)	48.0 ft / 14.6 m (48 modules) per tray
	1.5/ft (4.9/m)	7100 K	701269-7WSJ1-MB					48 modules (32.0 ft / 9.8 m)	32.0 ft / 9.8 m (48 modules) per tray
		6500 K	701269-6WSJ1-MB						
		5700 K	701269-57SJ1-MB						
		5000 K	701269-5WSJ1-MB						
		4000 K	701269-4WSJ1-MB						
	3000 K	701269-3WSJ1-MB	120			107 lm/W			
			115	103 lm/W					
HO 12 VDC	0.8/ft (2.6/m)	6500 K	701269-6WHJ1-MB	5-12" (127-305 mm)	1.68 W	180	107 lm/W	32 modules (40.0 ft / 12.2 m)	40.0 ft / 12.2 m (32 modules) per tray
		5000 K	701269-5WHJ1-MB						

Colors

Part number	Color	Nominal wavelength	Modules per foot/meter	Optimal can depth	Power per module	Lumens per module (nominal)	Efficacy	Power capacity per SloanLED 60 W 12 VDC power supply	Packaging of 5 trays per carton
701269-RDSJ3-MB	Red	628	2/ft (6.6/m)	3-8" (75-200 mm)	0.72 W	24	33.5 lm/W	75 modules (37.5 ft / 11.4 m)	24 ft / 7.3 m (48 modules) per tray
701269-RDSJ1-MB			1.5/ft (4.9/m)					75 modules (50 ft / 15.2 m)	32 ft / 9.8 m (48 modules) per tray
701269-ORSJ1-MB	Orange	606							
701269-YLSJ1-MB	Yellow	589							
701269-GRSJ1-MB	Green	527							
701269-BLSJ1-MB	Blue	471							

High Output, 24 VDC

Model	Modules per foot/meter	Color temperature	Part number	Optimal can depth	Power per module	Lumens per module (nominal)	Efficacy	Power capacity per SloanLED 100 W 24 VDC power supply	Packaging of 4 bags per carton
HO 24 VDC	0.8/ft (2.6/m)	6500 K	701269-6W24HJ1-MB	5-12" (127-305 mm)	1.56 W	180	115 lm/W	58 modules (72.5 ft / 22.1 m)	75 ft / 22.9 m (60 modules) per bag
	1.5/ft (4.9/m)		701269-6W24HJ2-MB						



SloanLED channel letter products are covered by US and foreign patents pending and covered by one or more of the following US patents issued: 6,932,495, 7,160,140, 7,241,031, 7,520,771, 7,931,386 and European Patent No. 1,756,471.

* Prism IP68 test parameters are 1.3 m submersion for 30 minutes. Do not mount in submerged application or where module will be directly exposed to prolonged flowing or dripping water.

† Configured for Class 2 Output.



SloanLED Prism

Premium 12V LED channel letter lighting solution

Power Supply Capacity

12 VDC Power supply†	SloanLED Prism 6500 K	SloanLED Prism, 7100 K, 6500 K, 5700 K, 5000 K, 4000 K, 3000 K	SloanLED Prism HO 6500 K, 5000 K	Red, Orange, Yellow, Green, Blue	Red
Modules per foot/meter	1/3.3	1.5/4.9	0.8/2.6	1.5/4.9	2/6.6
20 W Power supply	16 ft / 16 mods	10.7 ft / 16 mods	12.5 ft / 10 mods	16.7 ft / 25 mods	12.5 ft / 25 mods
60 W Power supply	48 ft / 48 mods	32 ft / 48 mods	40.0 ft / 32 mods	50 ft / 75 mods	37.5 ft / 75 mods
120 W Power supply	2 × 96 ft / 48 mods	2 × 64 ft / 48 mods	2 × 80 ft / 32 mods	2 × 100 ft / 75 mods	2 × 75 ft / 75 mods
Watts per module	1.12	1.12	1.68	0.72	0.72

24 VDC Power supply†	SloanLED Prism HO 24 VDC, 0.8/ft (2.6/m)	SloanLED Prism HO 24 VDC, 1.5/ft (4.9/m)
Modules per foot/meter	0.8/2.6	1.5/4.9
100 W Power supply	72.5 ft (22.1 m)/58 mods	38.7 ft (11.8 m)/58 mods
Watts per module	1.56	1.56

Density Guidelines

Model	Module color	Can Depth	Modules per foot	Max. stroke coverage per row		Inches on center dark vinyl	Inches on center perforated vinyl
				Single row	Multiple rows		
SloanLED Prism	White - 7100 K, 6500 K, 5700 K 5000 K, 4000 K, 3000 K	3"	1.5	10"	7" on center	6	5
		4"		14"	10" on center	9	8
		5-8"		16"	15" on center	14	13
	Red	2"	2	4"	2" on center	1	1
		3"	1.5	10"	8" on center	7	6
		4"		12"	10" on center	9	8
		5-8"		15"	12" on center	11	10
	Orange	3"	1.5	10"	7" on center	6	5
		4"		12"	10" on center	9	8
		5-8"		15"	12" on center	11	10
	Yellow	3"	2	10"	7" on center	6	5
		4"		12"	10" on center	9	8
		5-8"	1.5	15"	12" on center	11	10
	Green	3"	1.5	7"	7" on center	6	5
		4"		12"	10" on center	9	8
		5-8"		15"	12" on center	11	10
	Blue	3"	2	8"	6" on center	5	4
		4"		11"	8" on center	7	6
		5-8"	1.5	14"	11" on center	10	9
HO, 12 VDC & 24 VDC	6500 K	5-10"	0.8	16"	16" on center	15	14
	5000 K						

Notes:

- 1) It is recommended that you first test LED density in sample letter/cabinet to evaluate brightness, uniformity and color.
- 2) Should you have questions or require assistance in testing, please contact your SloanLED customer service representative.
- 3) Products can be used in can depths deeper or shallower than listed above, but testing is recommended.
- 4) The acrylic material used for all testing was 3/16" thickness sign grade 2447 acrylic.

These guidelines are intended to provide only an approximation of SloanLED Prism product required for your sign, assuming an optimal balance of performance and cost. SloanLED is not responsible for the actual results based on the use of these guidelines.

SloanLED Headquarters

805.676.3200 • info@SloanLED.com

SloanLED Europe b.v.

+31 88 12 44 900 • Europe@SloanLED.com



SloanLED.com

© 2020 SloanLED Rev H 2020-02-12



Use the online SloanLED Layout Estimator to get a quick design and material estimate for your sign.
Visit product page for details.



Visit product page for details.



Specifications subject to change without notice.