



The experts in permit services

484-883-3640

Permexpress@outlook.com

Beige Berryman
Philadelphia Art Commission
1515 Arch Street (13th FL)
Philadelphia, PA 19102

Stephanie Tuccio
116 Ellis Road
Havertown, PA 19083

**RE: STRANGELOVE'S
216 S. 11th Street
Philadelphia, PA**

January 19, 2021

Dear Beige,

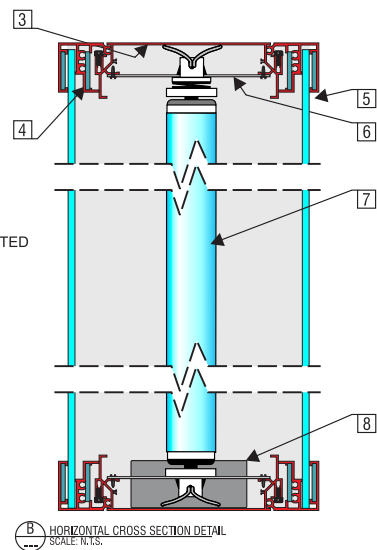
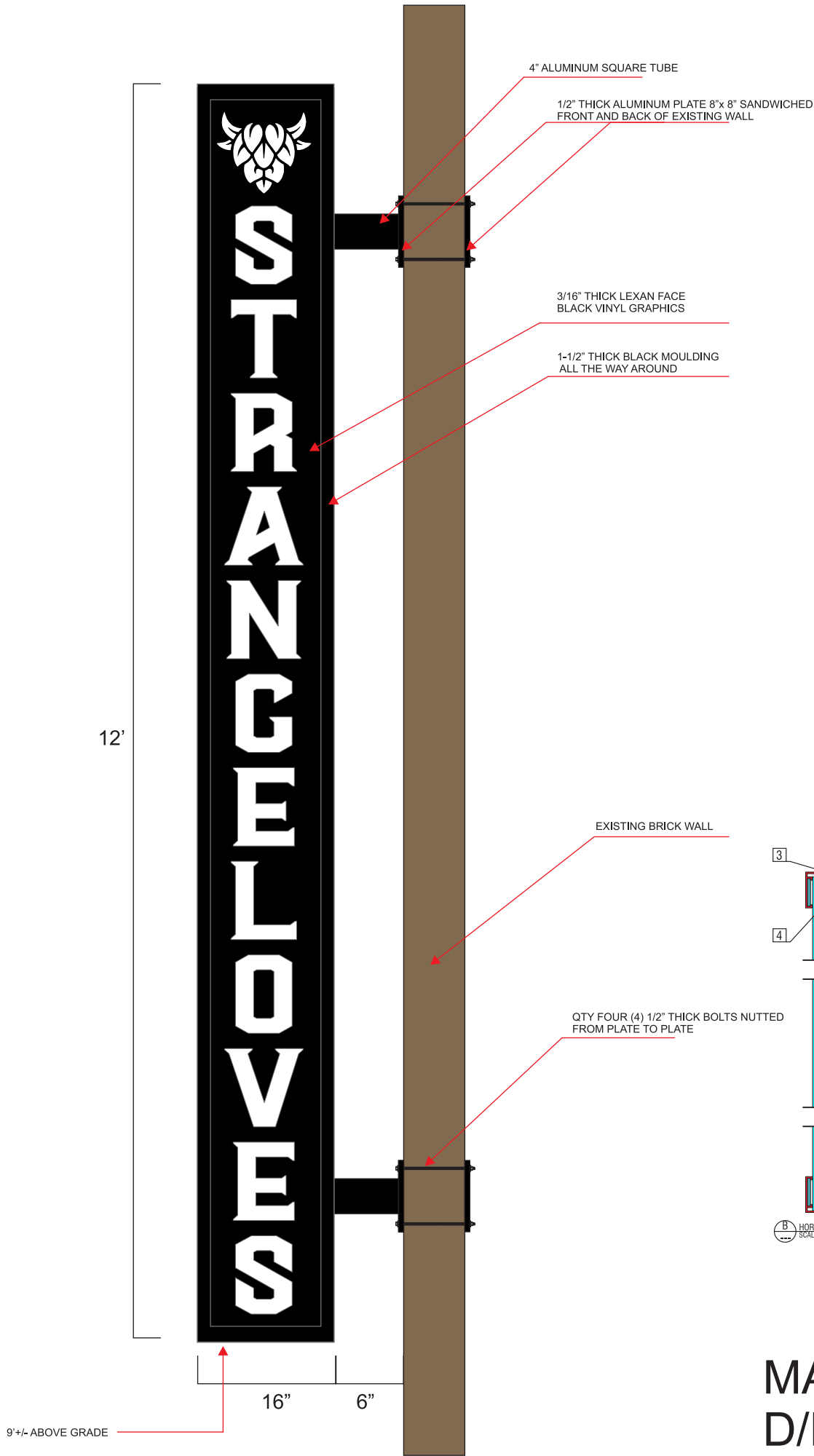
Strangelove's restaurant would like to update their branding by replacing and adding additional signage on their façade. They will be replacing the existing double-faced blade sign with another illuminated blade sign measuring 12' H x 16" W; 24" total projection; 16 square feet. They would also like to add an illuminated logo in the middle of the two windows measuring 32-1/2" H x 36" W, totaling 8.1 square feet. This tenant space is all one floor with a high ceiling. The second floor doesn't start until the red exterior brick.

If this cannot be looked at staff level please schedule us on the agenda for the next Sign Committee meeting on 2/17/2021.

Please feel free to contact me if you need anything else.

Kind Regards,

Stephanie Tuccio



DOUBLE FACE DIRECTIONAL SIGN

SIGN SPECIFICATIONS:

CUSTOM FABRICATED, DOUBLE FACED INTERNALLY ILLUMINATED BLADE SIGN WITH LEXAN FACE WITH VINYL GRAPHICS. ILLUMINATION IS ACCOMPLISHED BY 800 MA. FLUORESCENT LAMPS, AND OUTDOOR RATED SIGN BALLASTS.

MATERIAL SPECIFICATIONS:

3. ALUMINUM EXTRUSION SIGN CABINET.
4. ALUMINUM EXTRUSION FACE RETAINERS.
5. 3/16" LEXAN.
6. WIRE RACEWAY COVER.
7. HIGH OUTPUT FLUORESCENT LAMPS AND SOCKETS.
8. 800 MA. SIGN BALLASTS.



MARTINO
SIGNS
INC.

M

610-622-SIGN
www.martinosigns.com

Owner / CEO

David Martino

Project Manager

David J Martino

453 Penn Street t. 610.353.7446
Yeadon, PA 19050 f. 610.355.9269

KATLYAM MUKKAMALLA
STRANGELOVE'S
216 S 11TH STREET
PHILA

Job:

Qty: 1

Material List

A	
B	
C	
D	

Print Department

Approved By:

This design/engineering is to remain the exclusive property of MARTINO SIGNS INC. until approved and accepted through purchase by client named on drawing.

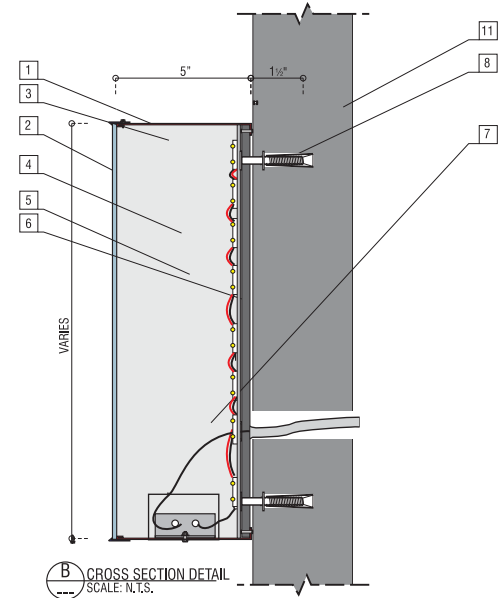
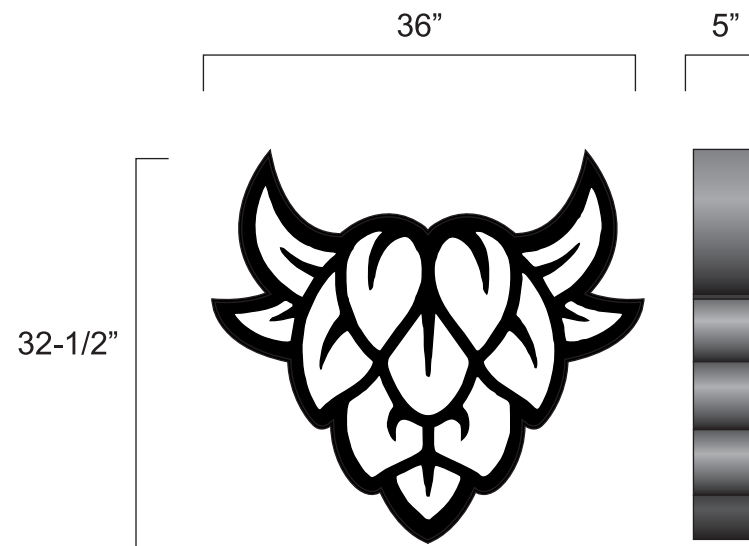
Date / Revisions

0 12/10/2020 CS

Project # 877

Design Drawing #1.0

MANUFACTURE AND INSTALL ONE 12' X 16"
D/F BLADE SIGN WITH INTERNAL ILLUMINATION



FACELIT CHANNEL LETTER W/ REMOTE POWER SUPPLY AND ILLUMINATED LED

- SPECIFICATIONS**
- 1. .040" ALUM. SIDE RETURNS.
 - 2. 3/16" WHITE PLEX W/VINYL GRAPHICS
 - 3. WHITE LED FOR FACE LIGHTING
 - 7. LOW VOLT LED WIRE
 - 8. WALL ANCHOR NON-CORROSIVE 3/8" EXPANSION ANCHORS, MINIMUM FOUR PLACES, AS REQUIRED BY EXISTING WALL CONSTRUCTION.
 - 9. LED POWER SUPPLY
 - 10. GROUNDED TRANSFORMER BOX.
 - 11. POWER SUPPLY BOX

- NOTES:**
- A. ELECTRICAL PRIMARY, SUPPLIED BY OTHERS, ONE 20 AMP/120 VOLT CIRCUIT REQUIRED

EXISTING



PROPOSED



MANUFACTURE AND INSTALL ONE
32.5" X 36" FACE LIT CHANNEL LETTER.

MARTINO
SIGNS
INC.

M

610-622-SIGN
www.martinosigns.com

Owner / CEO David Martino	Project Manager David J Martino
------------------------------	------------------------------------

453 Penn Street t. 610.353.7446
Yeadon, PA 19050 f. 610.355.9269

KATLYAM MUKKAMALLA
STRANGELOVE'S
216 S 11TH STREET
PHILA

Job:

Qty: 1

Material List	
A	
B	
C	
D	

Print Department

Approved By:

This design/engineering is to remain the exclusive property of MARTINO SIGNS INC. until approved and accepted through purchase by client named on drawing.

Date / Revisions

0	12/10/2020	CS
---	------------	----

Project # 877
Design Drawing # 2.0

PURVEYORS of FINE CRAFT BEERS

Cocktails
likekends

Craft
Sunt. Beer

Strangelove's

Strangelove's

CRUNCHIN'

MASTERS of FINE CRAFT BEERS

Cocktails
Weekend
Brunch

Craft
Event Space

Strangelove's



CRUNCHIK'N

1100 W
CHANCELLOR ST

WARM
&
COZY
STRANGELOVES
FREE BLANKET
WITH
HOT COCKTAILS!!

STRANGELOVES
TACO
Tuesday
\$3 SHOTS \$4 TACOS
\$6 SNACKS \$6 SLOTTES

WARM
&
COZY
STRANGELOVES
FREE BLANKET
WITH
HOT COCKTAILS!!

STRANGELOVES
20% OFF
ON ALL BEER ORDERS
TUESDAY
SEE US AT THE BAR
FOR MORE DETAILS

EDC Automatic