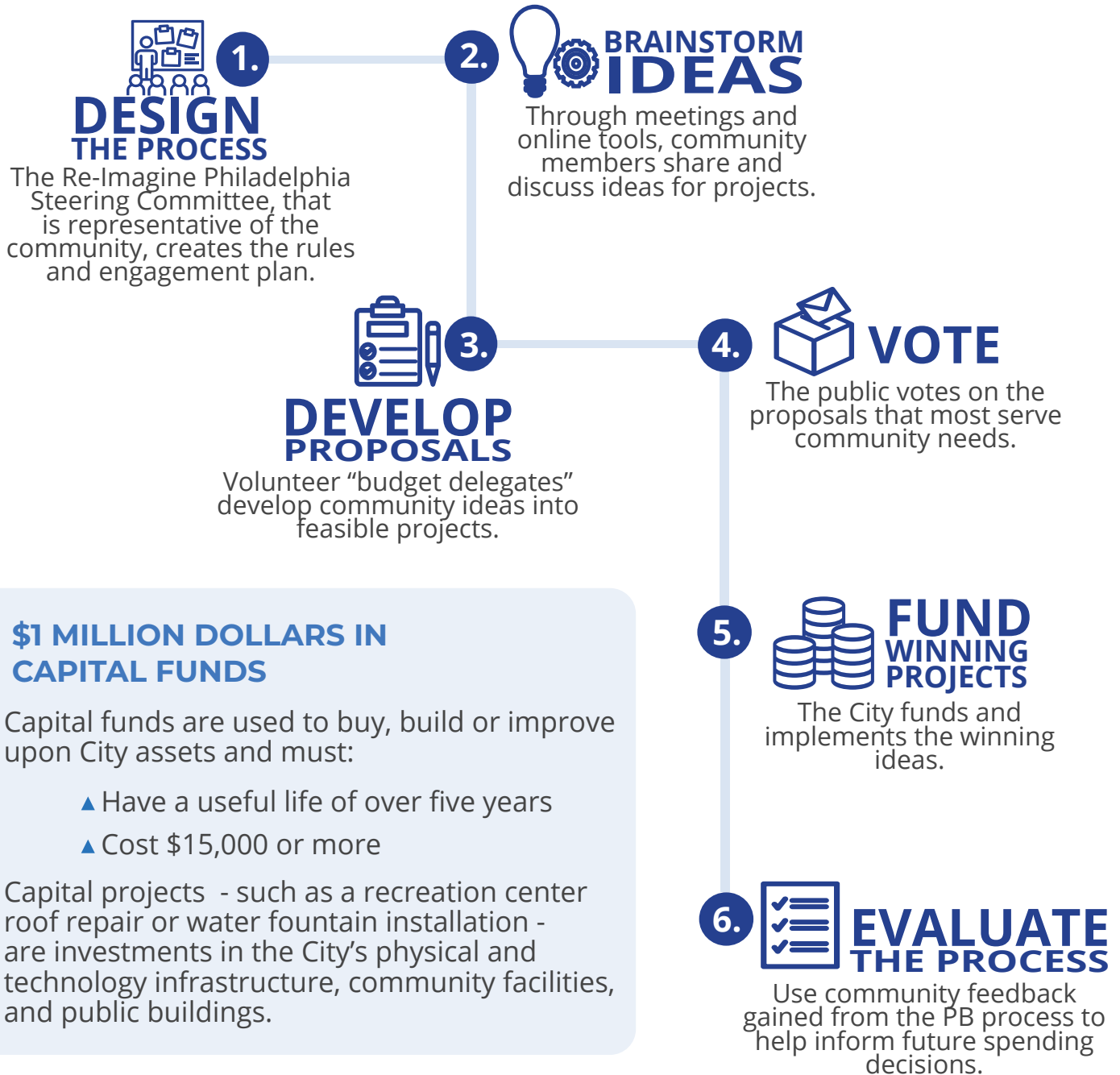


# WHAT IS PARTICIPATORY BUDGETING?

Participatory Budgeting (PB) in the City of Philadelphia is a democratic process in which community members will generate ideas and vote directly on how to spend \$1 million dollars on capital projects. **It gives the public real power over real money.**

## HOW IT WORKS

The City has launched a six month cycle of engagement that is combined with the regular budgeting process. The PB process follows these steps:



### \$1 MILLION DOLLARS IN CAPITAL FUNDS

Capital funds are used to buy, build or improve upon City assets and must:

- ▲ Have a useful life of over five years
- ▲ Cost \$15,000 or more

Capital projects - such as a recreation center roof repair or water fountain installation - are investments in the City's physical and technology infrastructure, community facilities, and public buildings.

## EXAMPLES OF CAPITAL PROJECTS



To learn more about Participatory Budgeting contact the Budget Office at [budget@phila.gov](mailto:budget@phila.gov).