

T.1 NORTH ELEVATION - Sign Location
SCALE: NTS

Customer / Job Site

WEWORK

1100 Ludlow St
Philadelphia, PA 19107

Scope of Work

**Furnish & Install
New Signage**

TOP BUILDING SIGN

**T.1 - Ludlow Street
Building Sign**

- Overall Size:
19'6" w x 50" h

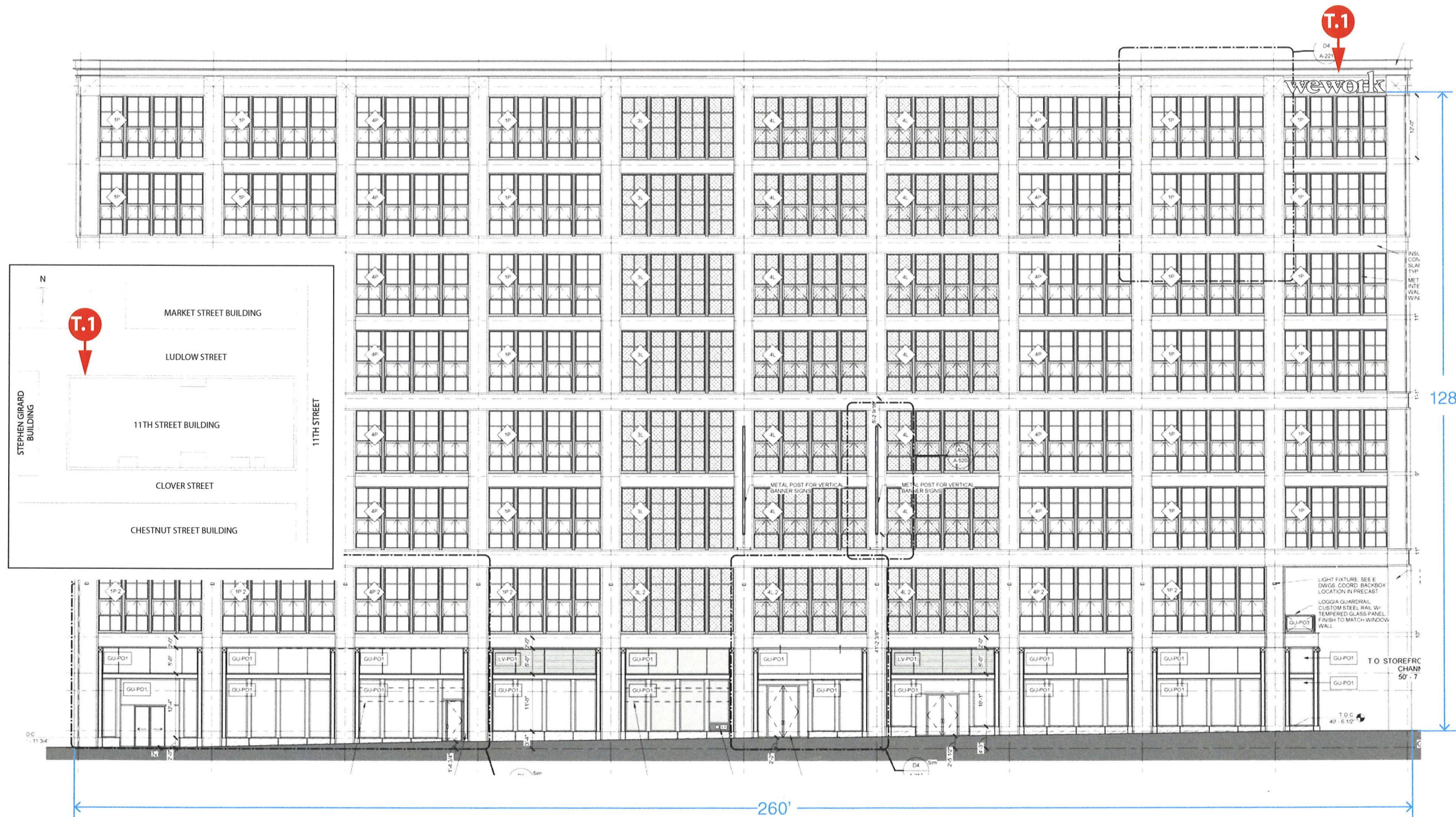
- Welded 5" Alum.
Returns & Trim,
Painted Black

- High-Impact Plastic
Faces, White

- Raceway Mounted
to Building per
Engineering

- Remote Mounted
Power, Primary to
Sign Location by
Others

**82
SQ. FT.**



Signs are subject to local municipal approval. Sizes, placement, and material are subject to change



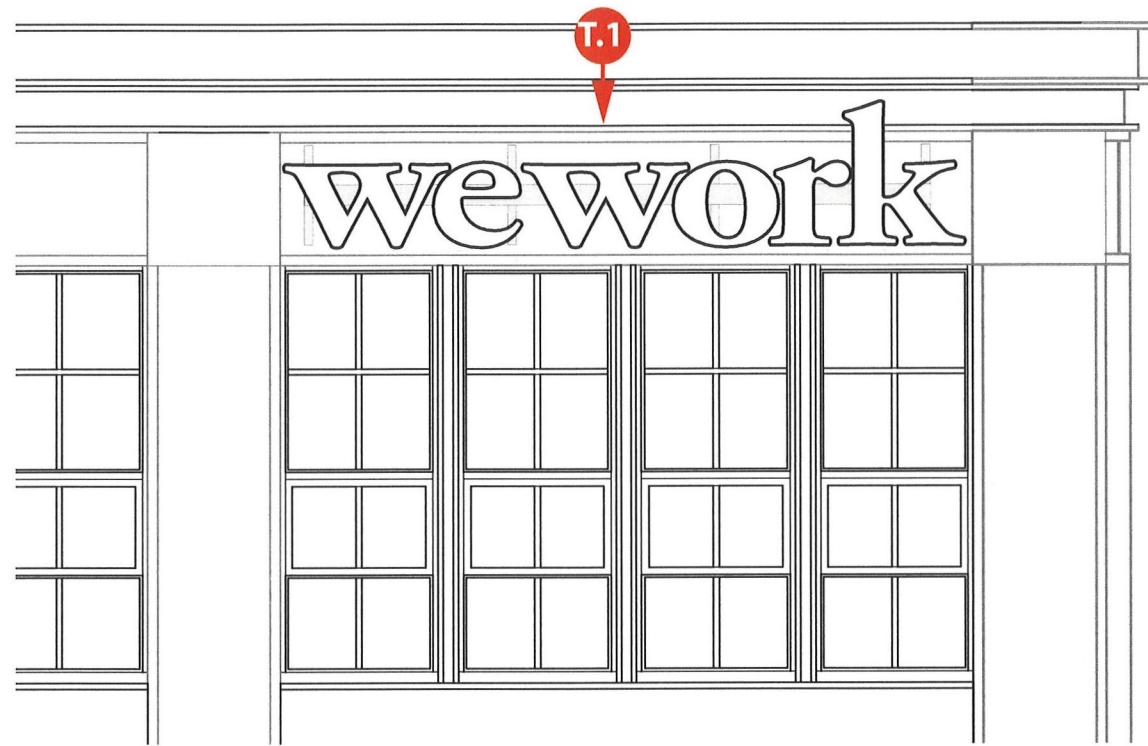
This design belongs to the ACE SIGN CO. and becomes the property of the customer only upon completion of an order, and is otherwise not to be used in whole or in part without written permission of ACE SIGN CO. • 2540 S. 1ST ST. • SPRINGFIELD, IL 62704 • 217 522-8417

JOB#: 99091 PROOF DATE: 10/08/20 SCALE: Varies, See Drawing Tile
designed by: MA APPROVED AS/IS APPROVED W/ CHANGES RE-DRAW W/ CHANGES

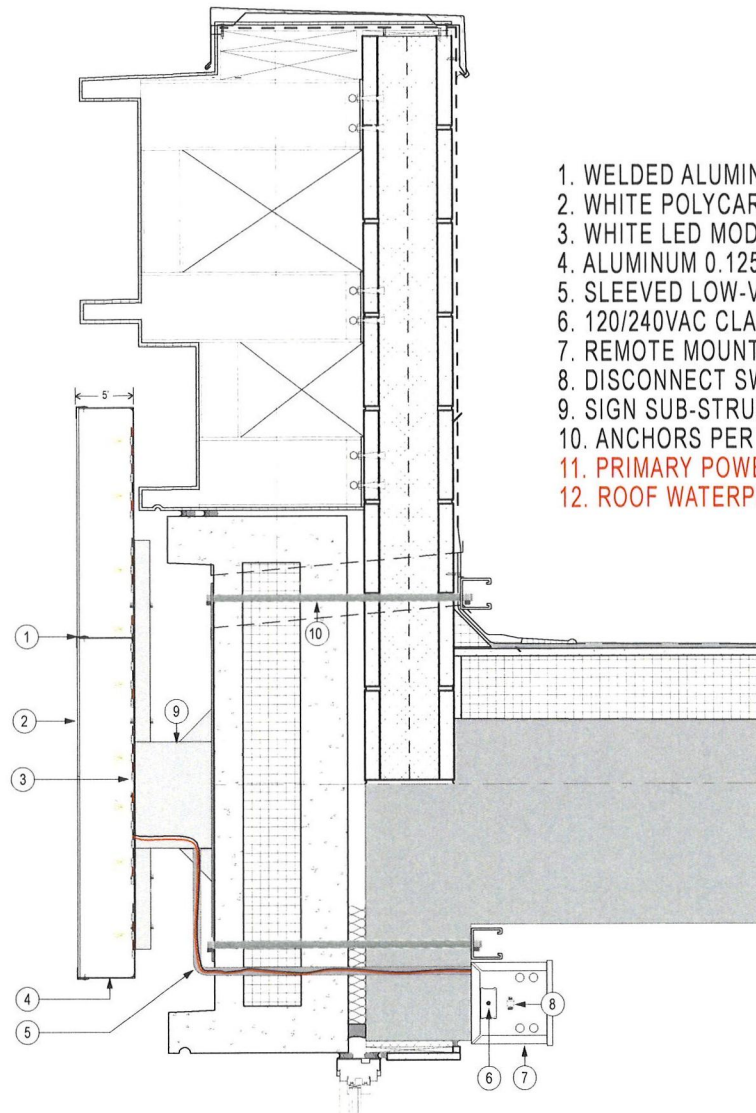
REF: #

*Proofs will predict design layout, text accuracy, image proportion and placement. Colors on a digital screen or printed proof may not reflect actual color.

T.1
2 PARTIAL NORTH ELEVATION - Sign Location
SCALE: 3/16" = 1'



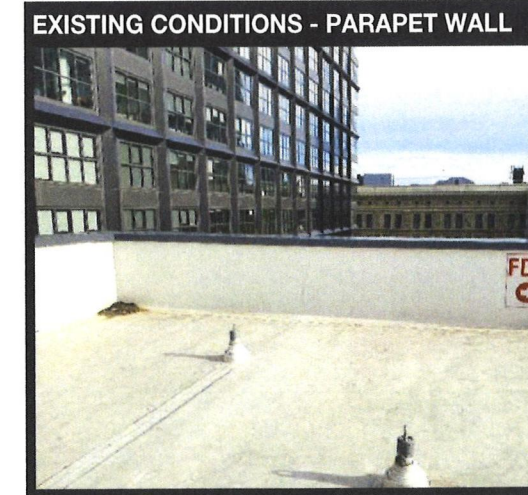
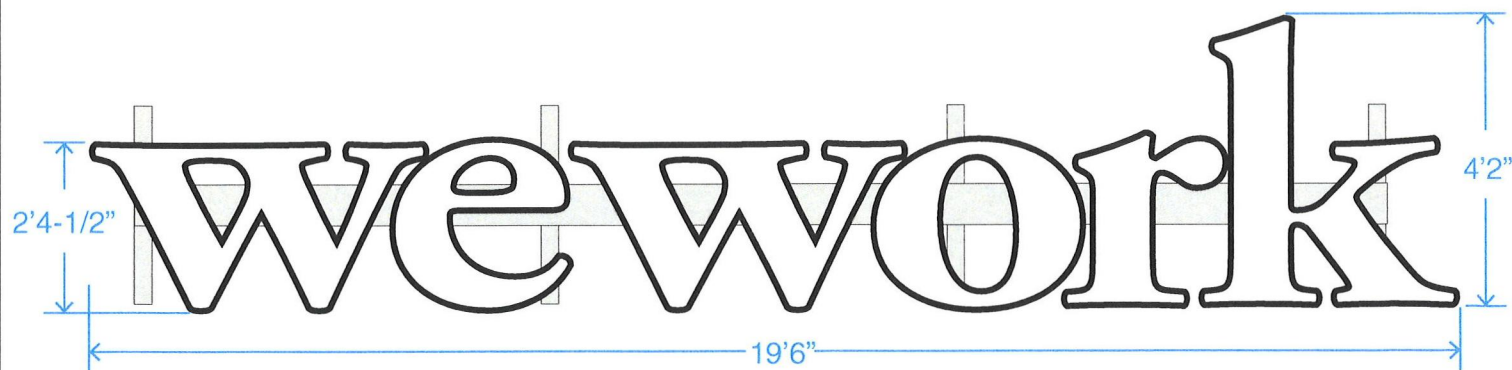
T.1
4 SIGN DETAIL - Section/Attachment
SCALE: 3/4" = 1'



1. WELDED ALUMINUM RETAINER W/ SCREW
2. WHITE POLYCARBONATE FACES
3. WHITE LED MODULES
4. ALUMINUM 0.125" BACKS / 0.063" RETURNS
5. SLEEVED LOW-VOLTAGE WIRES
6. 120/240VAC CLASS 2 POWER SUPPLY
7. REMOTE MOUNTED POWER SUPPLY BOX
8. DISCONNECT SWITCH
9. SIGN SUB-STRUCTURE(RACEWAY)
10. ANCHORS PER ENGINEERING
11. PRIMARY POWER TO SIGN BY OTHERS
12. ROOF WATERPROOFING BY OTHERS



T.1
3 SIGN DETAIL - Dimensions
SCALE: 3/8" = 1'



Disclaimer:
It is the customer's responsibility to have primary power available for the signs. Electrical hook-up will be included if adequate primary power is available within 5' of the sign at the time of installation.
All cosmetic and/or structural repairs of the building including (but not limited to) wall fascia patches and/or painting of the building are the responsibility of the customer.

Customer / Job Site

WEWORK

1100 Ludlow St
Philadelphia, PA 19107

Scope of Work

**Furnish & Install
New Signage**

TOP BUILDING SIGN

**T.1 - Ludlow Street
Building Sign**

- Overall Size:
19'6" w x 50" h

- Welded 5" Alum.
Returns & Trim,
Painted Black

- High-Impact Plastic
Faces, White

- Raceway Mounted
to Building per
Engineering

- Remote Mounted
Power, Primary to
Sign Location by
Others

**82
SQ. FT.**

Signs are subject to local municipal approval. Sizes, placement, and material are subject to change



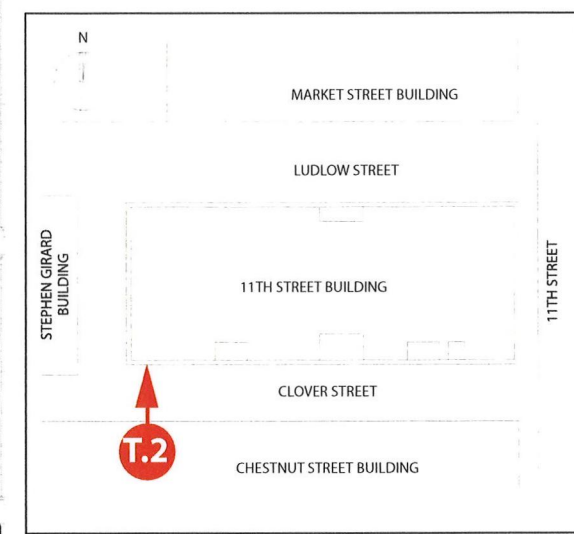
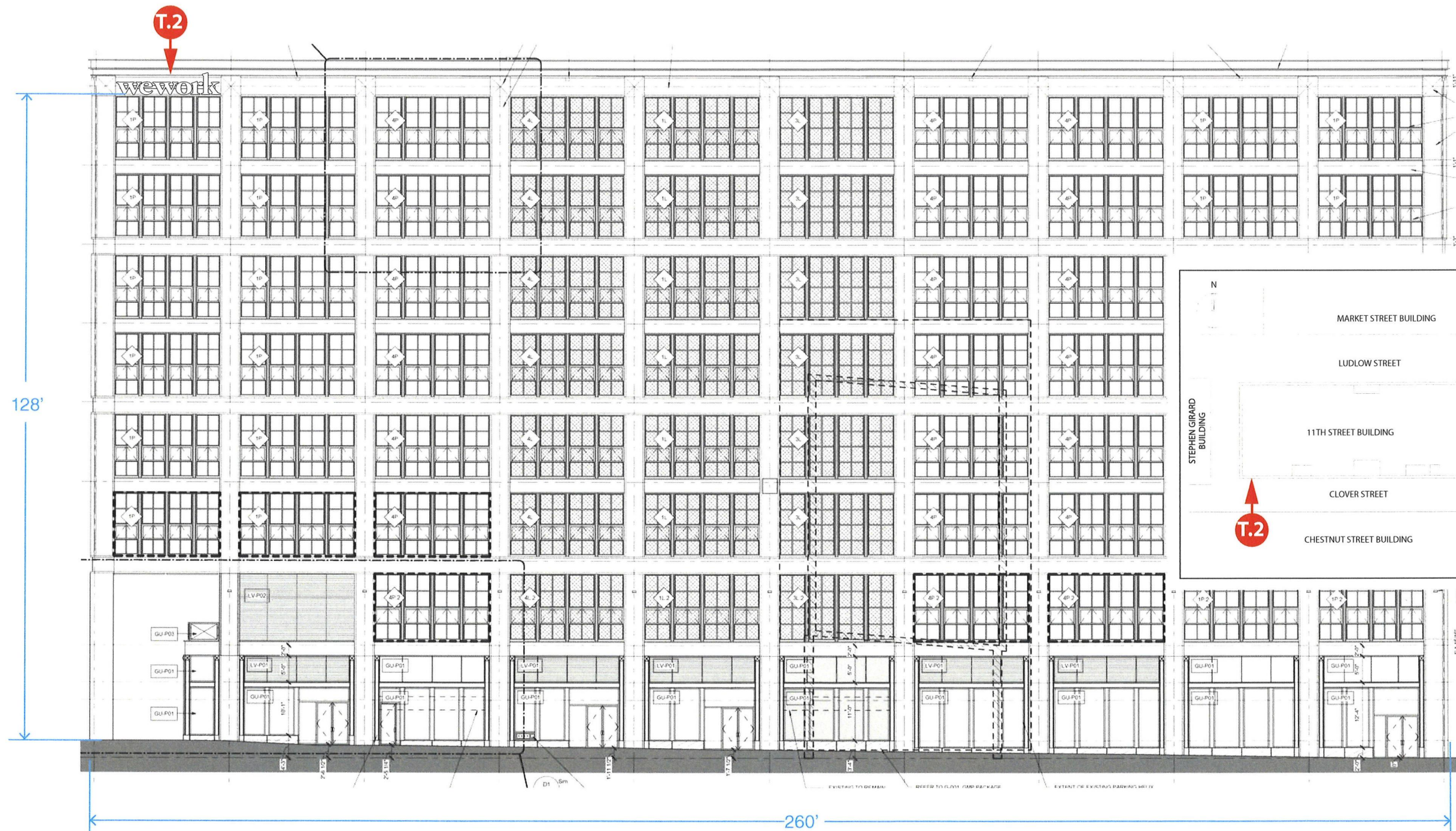
This design belongs to the ACE SIGN CO. and becomes the property of the customer only upon completion of an order, and is otherwise not to be used in whole or in part without written permission of ACE SIGN CO. • 2540 S. 1ST ST. • SPRINGFIELD, IL 62704 • 217 522-8417

JOB#: 99091 PROOF DATE: 10/08/20 SCALE: Varies, See Drawing Tile
designed by: MA APPROVED AS/IS APPROVED W/ CHANGES RE-DRAW W/ CHANGES

REF: #

*Proofs will predict design layout, text accuracy, image proportion and placement. Colors on a digital screen or printed proof may not reflect actual color.

T.2 SOUTH ELEVATION - Sign Location
 1 SCALE: NTS



Customer / Job Site

WEWORK
 1100 Ludlow St
 Philadelphia, PA 19107

Scope of Work

**Furnish & Install
 New Signage**

TOP BUILDING SIGN

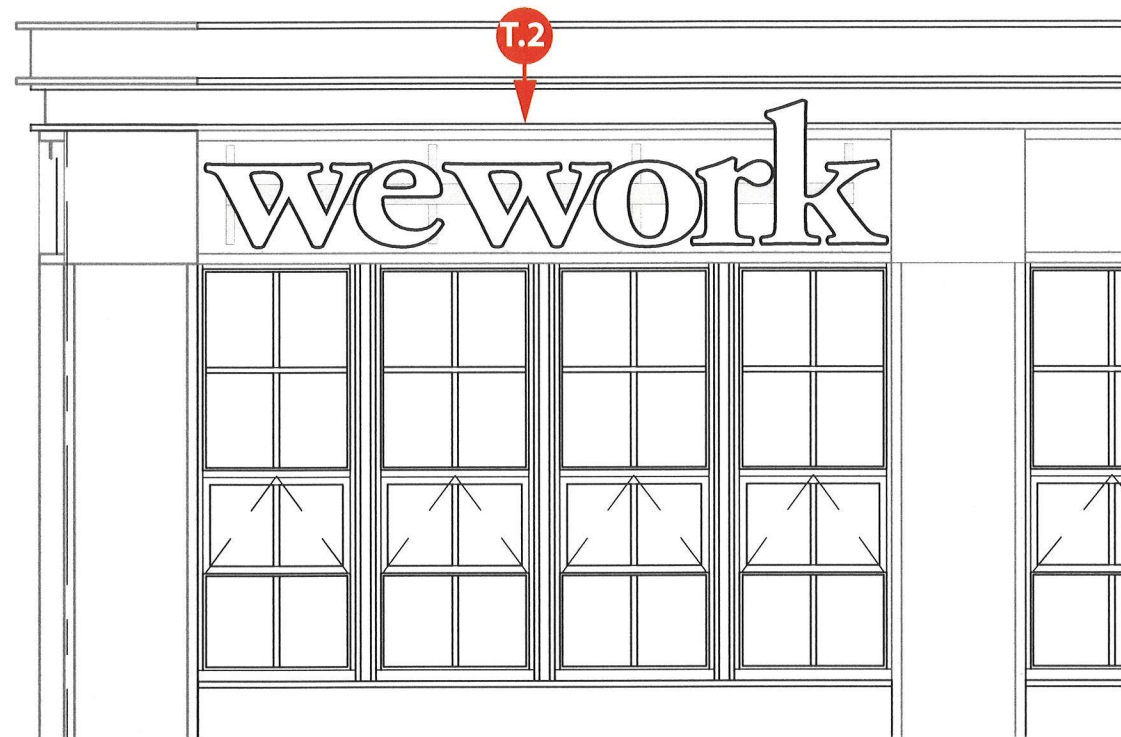
**T.2 - Ludlow Street
 Building Sign**

- Overall Size:
19'6" w x 50" h
- Welded 5" Alum.
Returns & Trim,
Painted Black
- High-Impact Plastic
Faces, White
- Raceway Mounted
to Building per
Engineering
- Remote Mounted
Power, Primary to
Sign Location by
Others

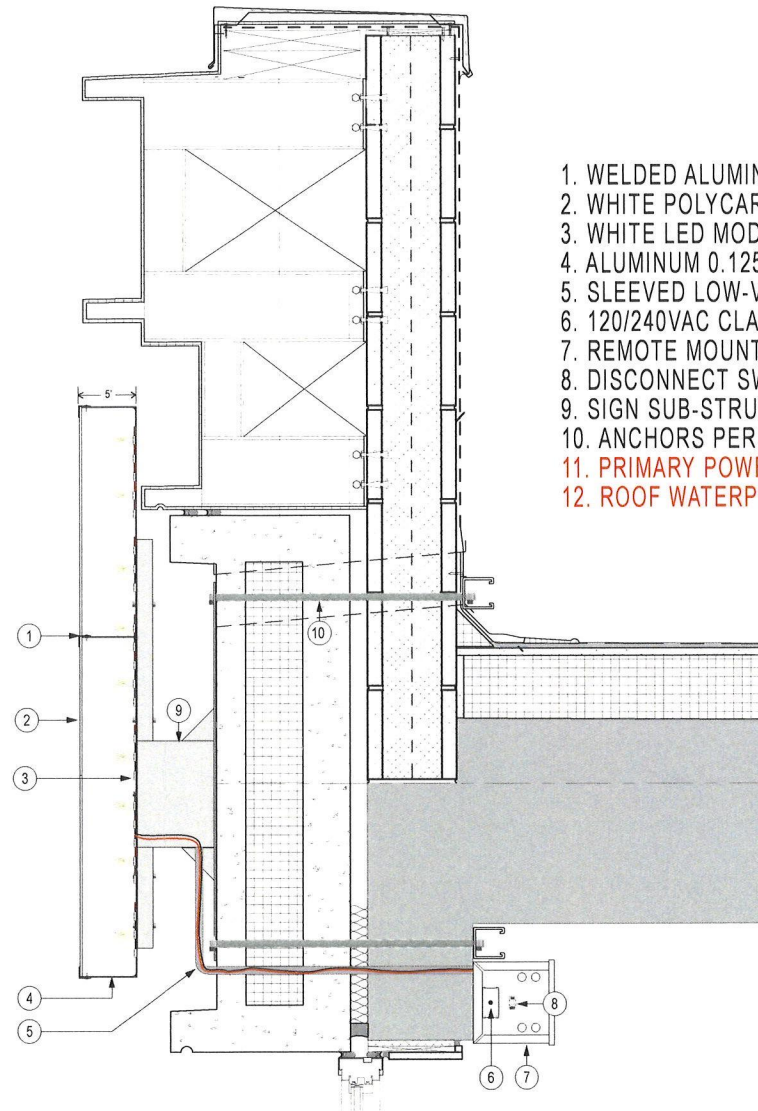
**82
 SQ. FT.**

***Signs are subject
 to local municipal
 approval. Sizes,
 placement, and
 material are subject
 to change***

T.2
2 PARTIAL SOUTH ELEVATION - Sign Location
SCALE: 3/16" = 1'



T.2
4 SIGN DETAIL - Section/Attachment
SCALE: 3/4" = 1'

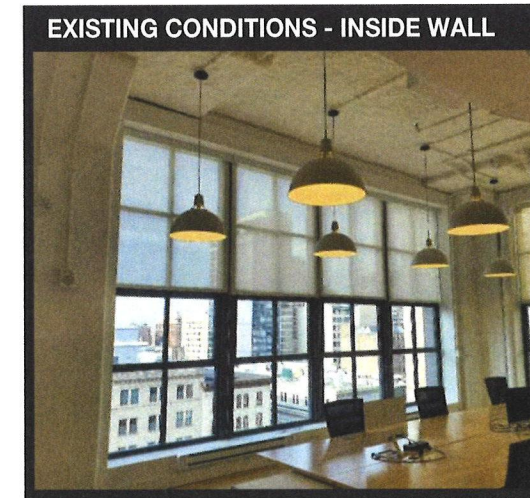
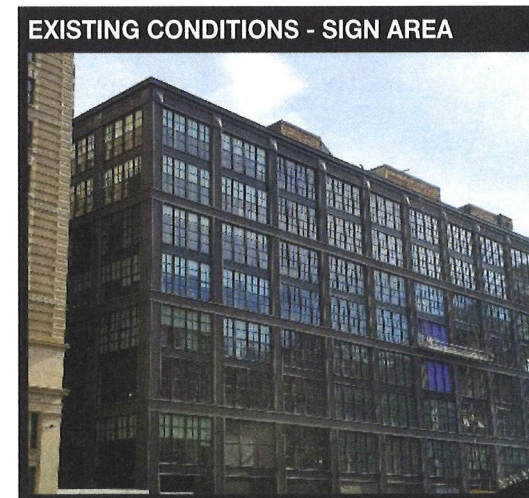
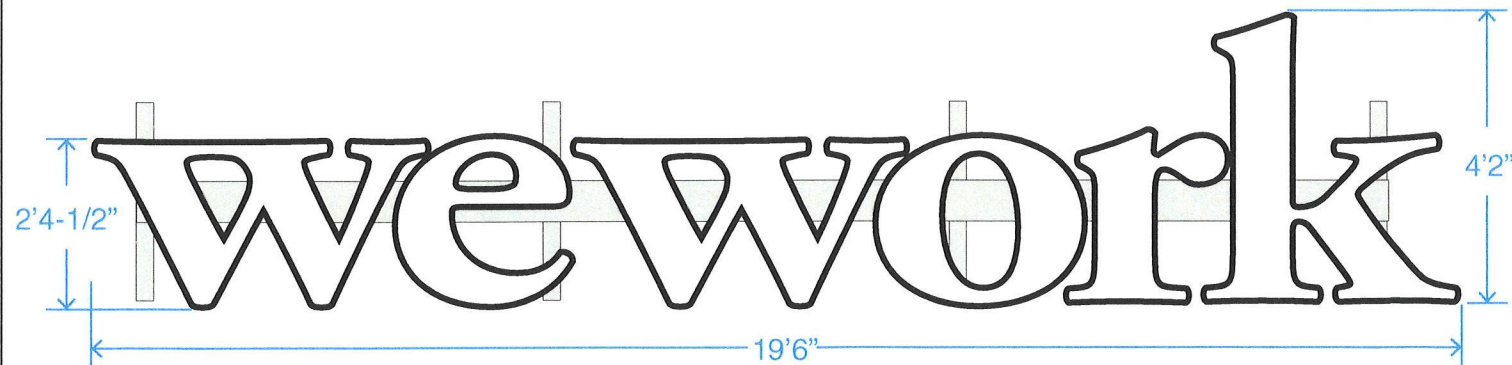


1. WELDED ALUMINUM RETAINER W/ SCREW
2. WHITE POLYCARBONATE FACES
3. WHITE LED MODULES
4. ALUMINUM 0.125" BACKS / 0.063" RETURNS
5. SLEEVED LOW-VOLTAGE WIRES
6. 120/240VAC CLASS 2 POWER SUPPLY
7. REMOTE MOUNTED POWER SUPPLY BOX
8. DISCONNECT SWITCH
9. SIGN SUB-STRUCTURE(RACEWAY)
10. ANCHORS PER ENGINEERING
11. PRIMARY POWER TO SIGN BY OTHERS
12. ROOF WATERPROOFING BY OTHERS



Disclaimer:
It is the customer's responsibility to have primary power available for the signs. Electrical hook-up will be included if adequate primary power is available within 5' of the sign at the time of installation. All cosmetic and/or structural repairs of the building including (but not limited to) wall fascia patches and/or painting of the building are the responsibility of the customer.

T.2
3 SIGN DETAIL - Dimensions
SCALE: 3/8" = 1'



Customer / Job Site

WEWORK

1100 Ludlow St
Philadelphia, PA 19107

Scope of Work

**Furnish & Install
New Signage**

TOP BUILDING SIGN

**T.2 - Ludlow Street
Building Sign**

- Overall Size:
19'6" w x 50" h

- Welded 5" Alum.
Returns & Trim,
Painted Black

- High-Impact Plastic
Faces, White

- Raceway Mounted
to Building per
Engineering

- Remote Mounted
Power, Primary to
Sign Location by
Others

82
SQ. FT.

Signs are subject to local municipal approval. Sizes, placement, and material are subject to change



This design belongs to the ACE SIGN CO. and becomes the property of the customer only upon completion of an order, and is otherwise not to be used in whole or in part without written permission of ACE SIGN CO. • 2540 S. 1ST ST. • SPRINGFIELD, IL 62704 • 217 522-8417

JOB#: 99091 PROOF DATE: 10/08/20 SCALE: Varies, See Drawing Title
designed by: MA APPROVED AS/IS APPROVED W/ CHANGES RE-DRAW W/ CHANGES