

**Forman Sign Company  
10447 Drummond Road  
Philadelphia, PA 19154  
215-827-6500  
215-827-6501 FAX**

August 25, 2020

Philadelphia Art Commission  
One Parkway  
1515 Arch Street, 13<sup>th</sup> Floor  
Philadelphia, PA 19102  
Attn: Beige Berryman  
215-683-2095

Re: CVS Pharmacy  
1424-26 Chestnut Street

The existing signs will be removed as noted on drawings.

Proposed signs:

- Sign #1 – One 10"x10'5"x1" thick cast bronze plaque. Duranodic bronze background with brass-finish raised copy.
- Signs #2 and #3 – Two 23-3/4"x18"x1" thick solid bronze plaques with 3/4" bevel edges. Duranodic bronze background with brass-finish raised copy.
- Sign #4 – One set 24-3/16"x49-9/16" interior channel letters. Painted aluminum sides and backs. Internally illuminated with red LEDs. Red acrylic face panels with trimcap. Attached to interior ceiling-mounted black aluminum angle frame.
- Sign #6 – One 2"x14-1/2" panel in existing hours plaque. White acrylic with red vinyl copy.

Thank you,



Sharon Brandt

## CVS – 1424-26 Chestnut Street

These photos have not been manipulated in any way on a computer



Straight on



Building to left



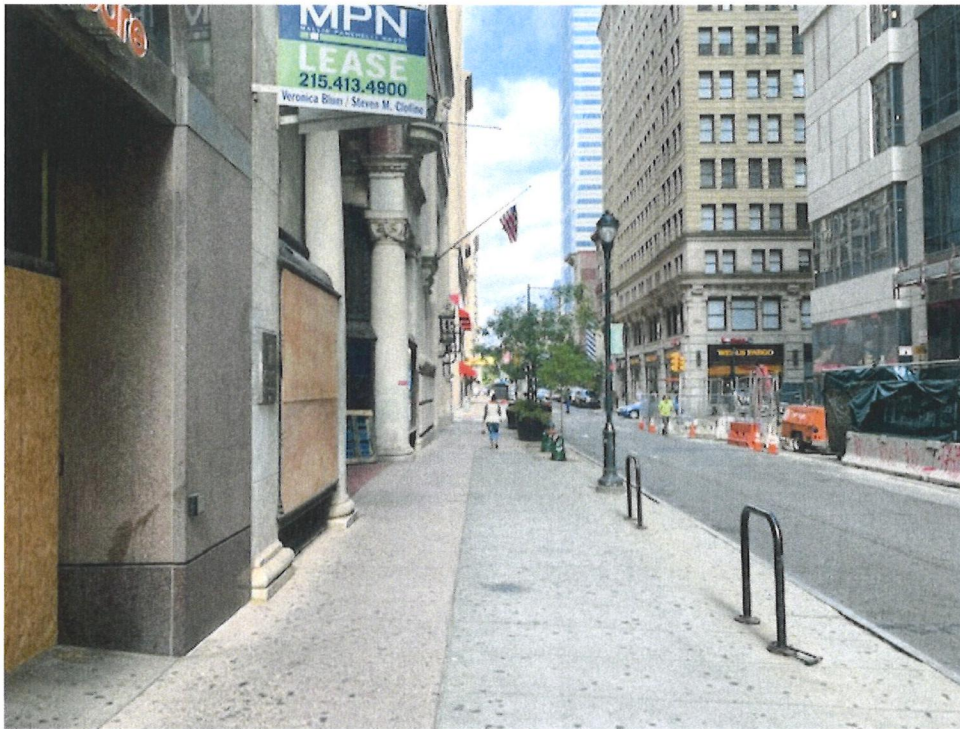


Building to right



Looking down Chestnut St to left

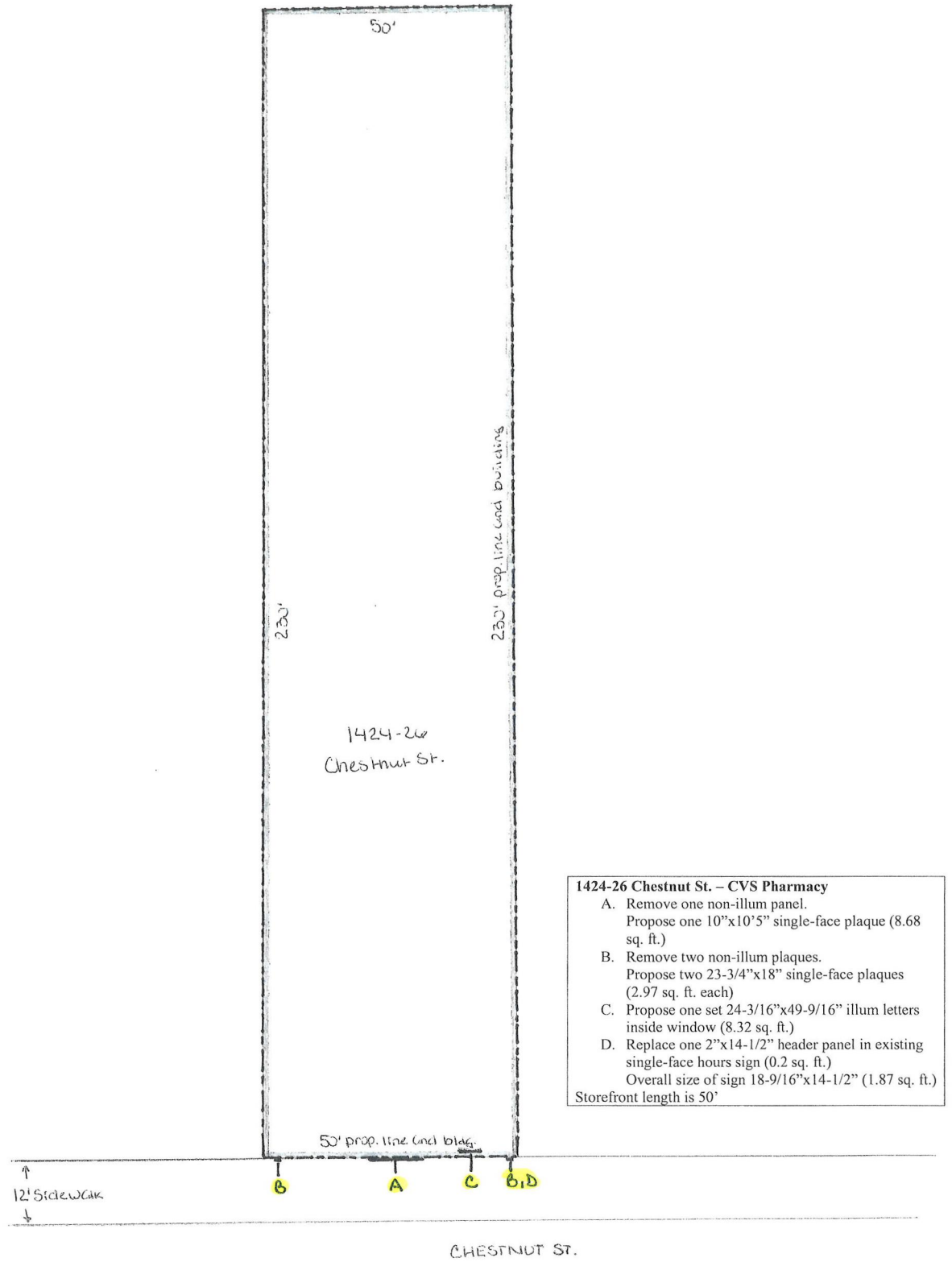




Looking down Chestnut St to right



Looking across Chestnut St



North  
↓

1" = 20'



EXISTING



PROPOSED



- 1 CUSTOM CAST MACHINED BRONZE PLAQUE (Non-Illuminated) = 8.68 SQ. FT.

EXISTING



PROPOSED

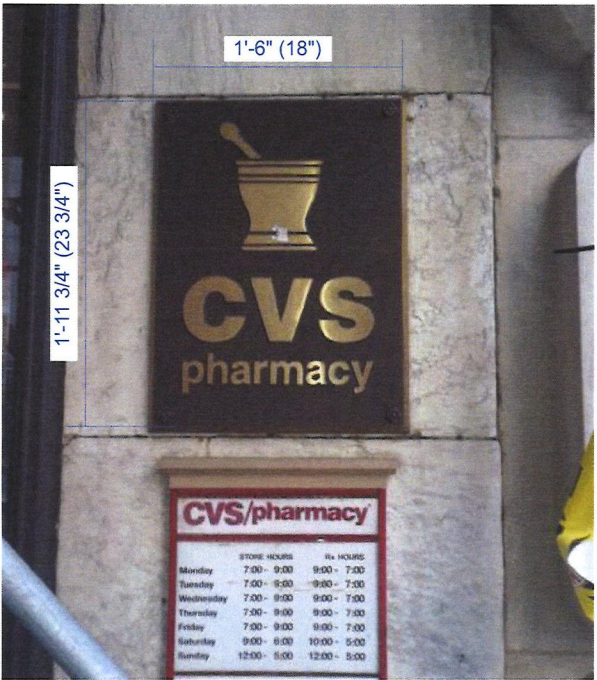


Facade to left of entrance doors

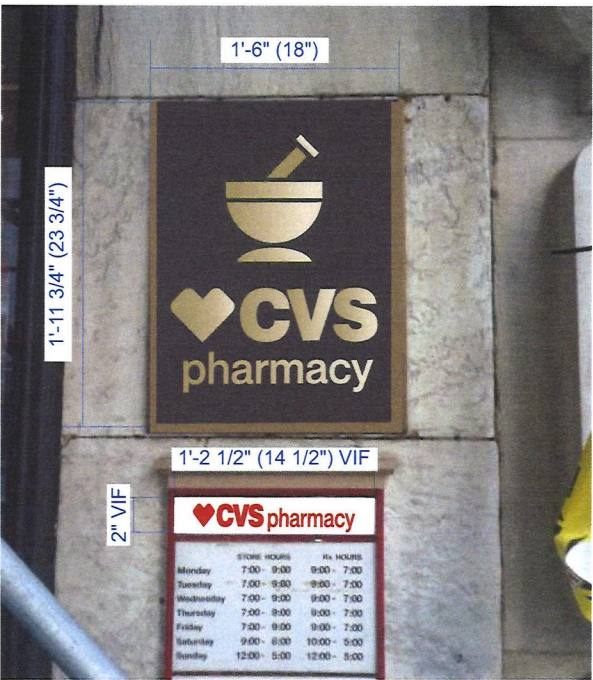
- 2 CUSTOM SOLID MACHINED BRONZE PLAQUE (Non-Illuminated) = 2.97 SQ. FT.



EXISTING



PROPOSED



Facade to right of entrance doors

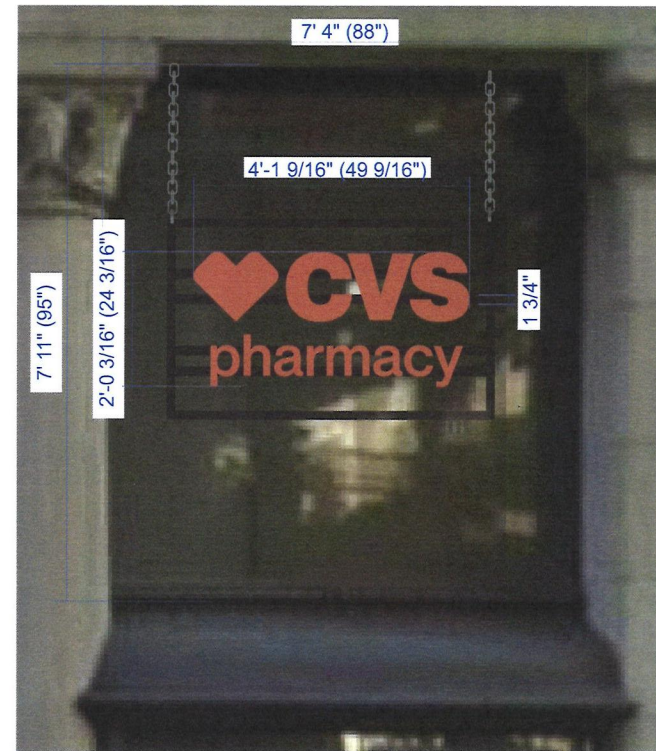
- 3 CUSTOM SOLID MACHINED BRONZE PLAQUE (Non-Illuminated) = 2.97 SQ. FT.
- 6 CVS STORE HOURS PLAQUE VINYL: CVS PHARMACY LOGO (Non-illuminated) = 0.20 SQ. FT.



EXISTING

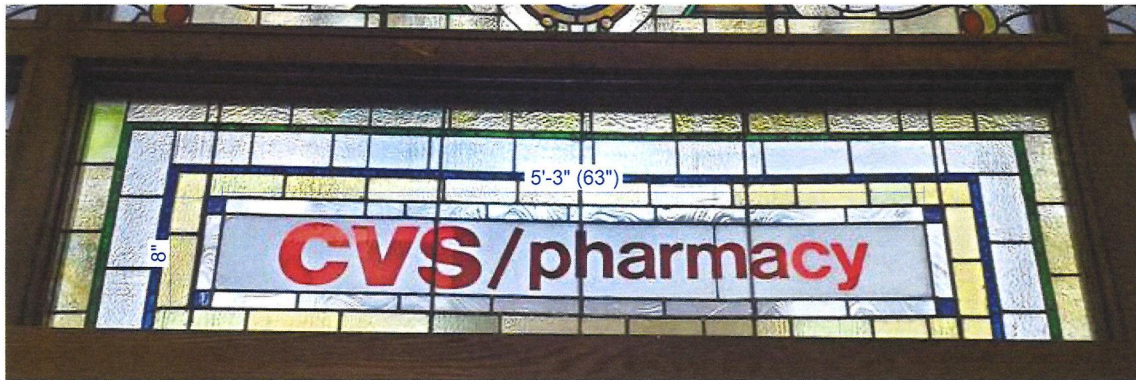


PROPOSED



- 4 INTERNAL LED ILLUMINATED CHANNEL LETTERS (IL-12-CL-S) = 8.32 SQ. FT.  
Sign mounted to interior ceiling

EXISTING



PROPOSED

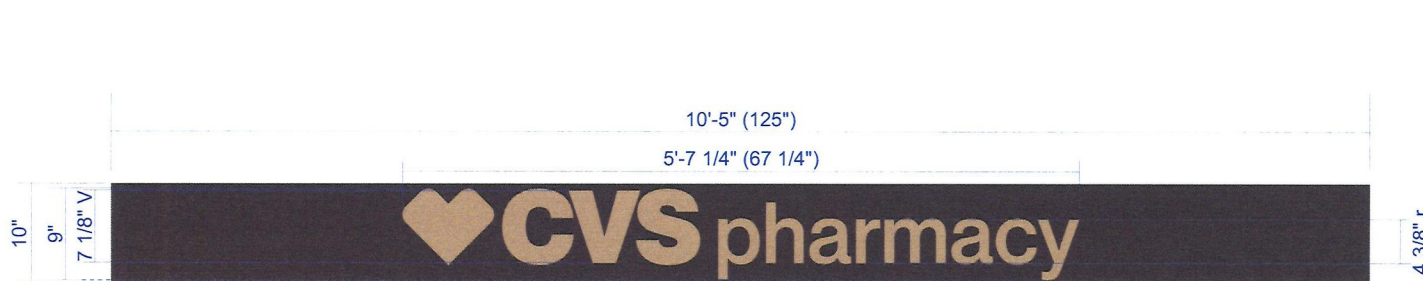


5 INTERNAL 1ST SURFACE STENCIL CUT TRANSLUCENT VINYL (Non-illuminated) = 3.50 SQ. FT.

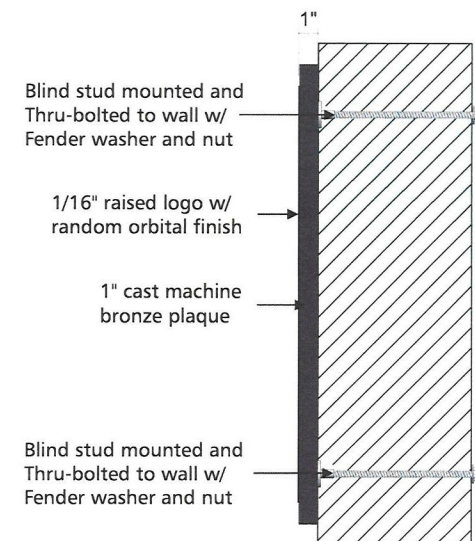
Interior - not included in scope of permit



QTY (1) 10" H x 125" L x 1" D CUSTOM CAST MACHINED BRONZE PLAQUE 8.68 Sq. Ft.  
 SIGN 1 SCALE: 1"=1'-0"



SECTION DETAIL  
 SCALE: NTS



SPECIFICATIONS

Custom cast machined bronze plaque  
 -1/16" Raised CVS pharmacy logo w/  
 random orbital finish  
 -Blind stud mounted and Thru-bolted  
 to wall w/ Fender washer and nut

COLORS & MATERIALS

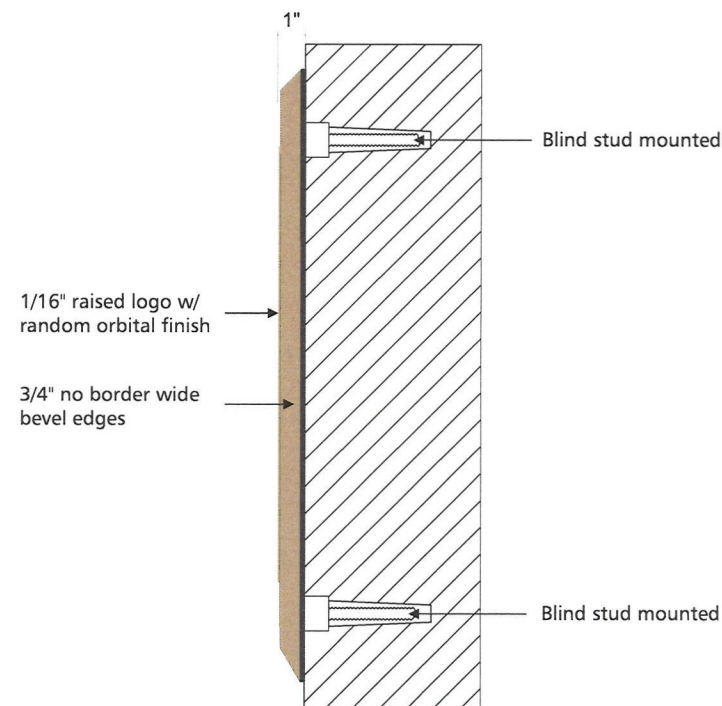
■ Duranodic Bronze  
 ■ Brass w/ random orbital finish

QTY (1) 23-3/4" H x 18" L x 1" D CUSTOM SOLID MACHINED BRONZE PLAQUE 2.97 Sq. Ft.  
 SIGN 2 SCALE: 3"=1'-0"



## SECTION DETAIL

SCALE: NTS



## SPECIFICATIONS

Custom solid machined bronze plaque  
 -1/16" Raised CVS pharmacy logo w/  
 random orbital finish  
 -3/4" no border wide bevel edges  
 -Blind stud mounted

## COLORS & MATERIALS

Duranodic Bronze  
 Brass w/ random orbital finish

**b** **broadwaynational**  
 1900 Ocean Ave., Ronkonkoma, NY 11779  
 P631.737.3140 F631.737.3160  
 INTERNAL USE ONLY: 23405\_04.01.19\_00.01\_AM

DETAIL  
**CVS pharmacy**

☐ Approved ☐ Rejected  
☐ Approved with Corrections ☐ Revise and Resubmit  
 Signature: \_\_\_\_\_ Date: \_\_\_\_\_

STORE #379  
 1424-26 CHESNUT ST.  
 PHILADELPHIA, PA 19107



QTY (1)

SIGN 3

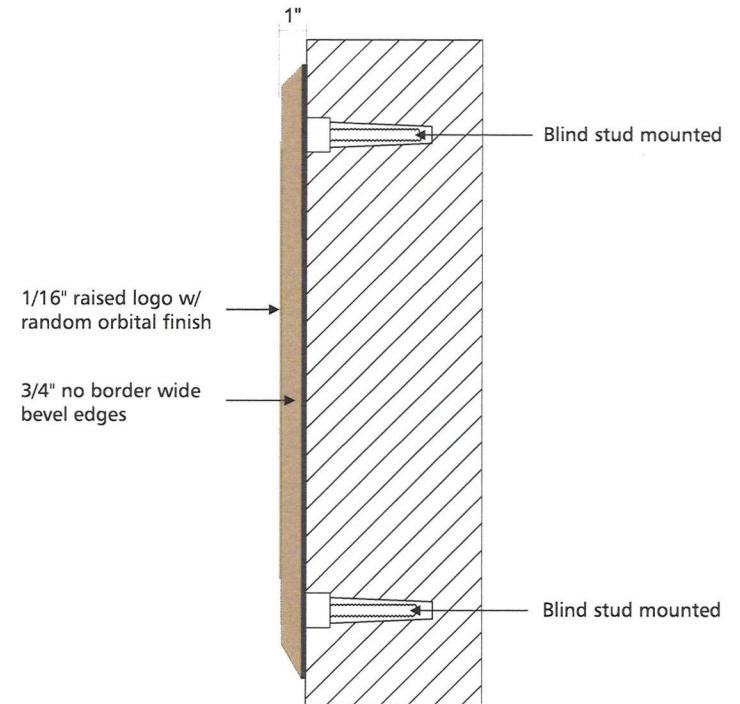
23-3/4" H x 18" L x 1" D CUSTOM SOLID MACHINED BRONZE PLAQUE  
SCALE: 3"=1'-0"

2.97 Sq. Ft.



## SECTION DETAIL

SCALE: NTS



## SPECIFICATIONS

Custom solid machined bronze plaque  
-1/16" Raised CVS pharmacy logo w/  
random orbital finish  
-3/4" no border wide bevel edges  
-Blind stud mounted

## COLORS & MATERIALS

■ Duranodic Bronze  
■ Brass w/ random orbital finish

**b** **broadwaynational**

1900 Ocean Ave., Ronkonkoma, NY 11779  
P631.737.3140 F631.737.3160  
INTERNAL USE ONLY: 23405\_04.01.19\_00.01\_AM

DETAIL  
**CVS pharmacy**

☐ Approved ☐ Rejected  
☐ Approved with Corrections ☐ Revise and Resubmit  
Signature: \_\_\_\_\_ Date: \_\_\_\_\_

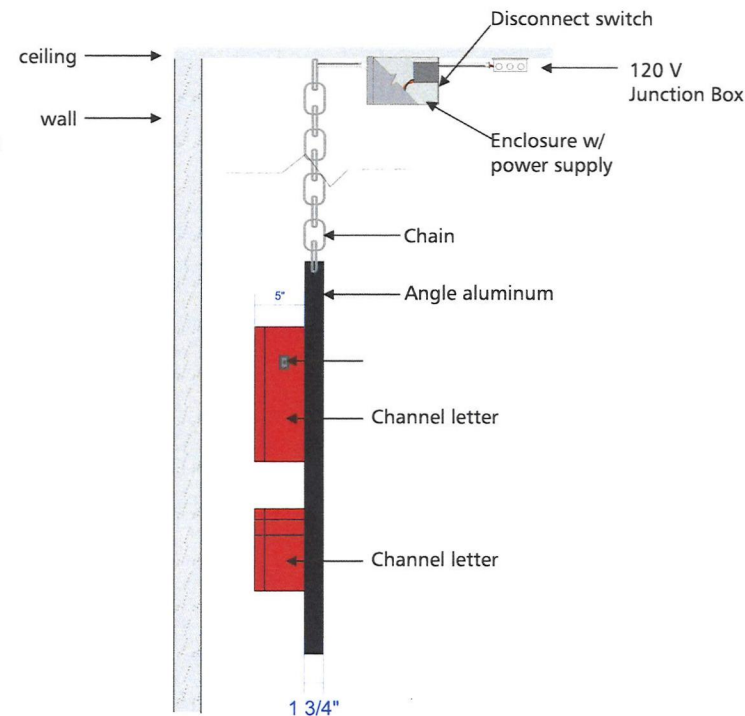
STORE #379  
1424-26 CHESNUT ST.  
PHILADELPHIA, PA 19107

QTY (1) INTERNAL LED ILLUMINATED CHANNEL LETTERS (IL-12-CL-S)  
 SCALE: 1 1/2" = 1'-0"

SIGN 4



SECTION DETAIL  
 SCALE: NTS



SPECIFICATIONS

Internally Illuminated Stacked Logo  
 Channel Letters IL-12-CL-S  
 - Chemcast 3/16" Red acrylic faces #2793  
 - 5" Deep pre-finished Hunter Red returns  
 - 3/4" Jewelite True Red trim cap letters <30"  
 - 1" Jewelite True Red trim cap letters >30"  
 - Red LED illumination  
 - 120 Volt Power supplies  
 - 1.75" horizontal angle aluminum ptm Duranodic Bronze

COLORS & MATERIALS

- Chemcast Red Acrylic #2793
- Jewelite True Red Trim Cap
- Pre-Finished Hunter Red Returns

**b** **broadwaynational**  
 1900 Ocean Ave., Ronkonkoma, NY 11779  
 P631.737.3140 F631.737.3160  
 INTERNAL USE ONLY: 23405\_04.01.19\_00.01\_AM

DETAIL  
**CVS pharmacy**

☐ Approved ☐ Rejected  
☐ Approved with Corrections ☐ Revise and Resubmit  
 Signature: \_\_\_\_\_ Date: \_\_\_\_\_

STORE #379  
 1424-26 CHESNUT ST.  
 PHILADELPHIA, PA 19107

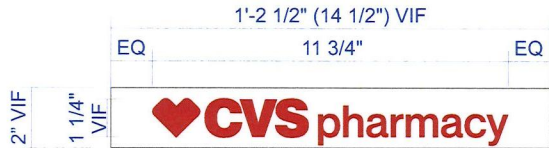


QTY (1)

SIGN 6

CVS STORE HOURS PLAQUE VINYL: CVS PHARMACY LOGO

SCALE: 1'-1/2"=1'-0"



NOTES:

NEW CVS LOGO PROPOSED,  
ALL DIMENSIONS TO BE  
VERIFIED IN FIELD.

SPECIFICATIONS

TOP TUBE

- Red opaque vinyl graphics to be applied first surface to existing sign

COLORS & MATERIALS

Cardinal Red Vinyl; 3M 7725-53