

Ez Signs, LLC
2177 Bennett Road
Philadelphia, PA 19116
Tele: 1(866) 349- 5444
FAX: (215) 676-3269
service@signsinstall.com

EZ SIGNS INC
1 (866) FIX-LIGHT

August 31, 2020

To whom it may concern,

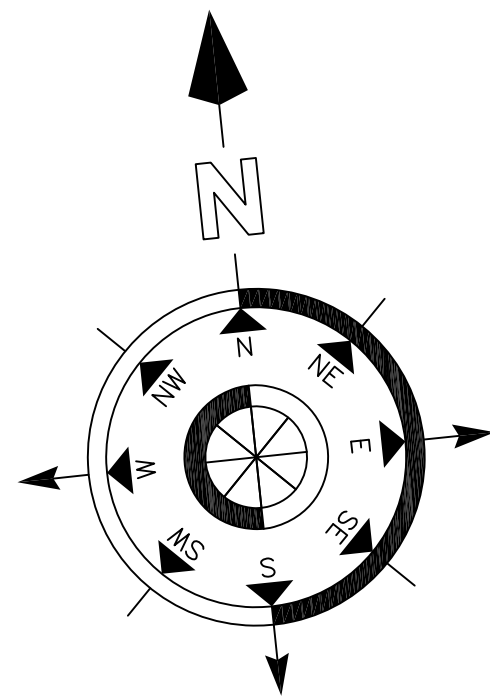
Proposed Signs installation for Indochino located at: 201 S 18TH ST, Philadelphia, PA 19103
AKA1718 Walnut St / Space #1718

The scope of work includes:

- Existing sign has been removed.
- Sign A - Install one (1) D/S statically illuminated led-lit accessory Blade sign 1'-6" x 2'-0" (3 sqft)
- Sign B - Install one (1) non-illuminated awning with logo 4'-8" x 27'-1" (126.39 sqft).

If you have any questions please, feel free to contact me at any time!

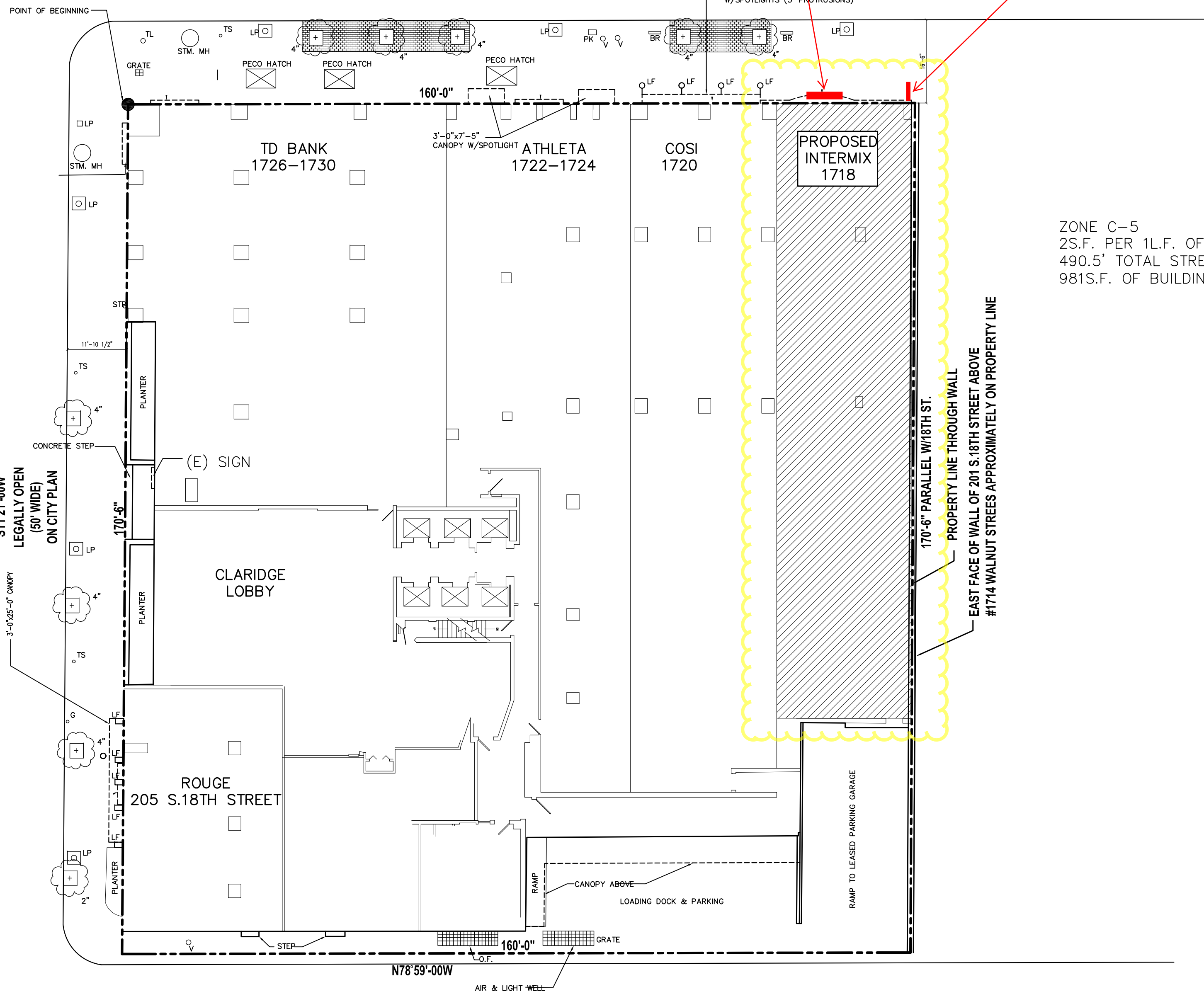
Natalya Atroshyna
EZ SIGNS LLC
2177 Bennett Road
Philadelphia, PA 19116
p. 267-406-0273
f. (215) 676-3269
e. permits@signsinstall.com



18TH STREET

WALNUT STREET

N78°59'-00W
LEGALLY OPEN
(57'-6" WIDE)
ON CITY PLAN



ZONE C-5
25S.F. PER 1L.F. OF STREET FRONTAGE
490.5' TOTAL STREET FRONTAGE
981S.F. OF BUILDING SIGNAGE PERMITTED

CHANCELOR STREET

Sign B
Remove existing wall sign.
Install one(1) non-
illuminated
awning with logo
4'-8" x 27'-1" (126.39 sqft)

Sign A
Install one (1) D/S
statically illuminated
led-lit Blade sign
1'-6" x 2'-0" (3 sqft)

SITE PLAN		01
REF.:	SOURCE:	1/16" = 1'-0"

Issue #	Description	Status	Date
MEP ENGINEER			

Wick Fisher White

111 S. INDEPENDENCE MALL EAST PHILADELPHIA PA 19106 T.215.627.0200
ARCHITECT

Eric Hafer & Associates, P.A.

827 STONE ROAD, LAUREL SPRINGS, NJ 08021 T.856.782.7720
DESIGNER

180 VARICK STREET NEW YORK NY 10014 T.212.691.1611
PROJECT

INTERMIX
1718 Walnut Street
Philadelphia, PA 19103

JANSONGOLDSTEIN

SEAL & SIGNATURE	DATE	
	PROJECT No.	
	DRAWN BY	CHK. BY
	Scale	Dwg. #

1718 Walnut St AKA 201 S18TH St

Sign B

TOP OF AWNING TO
MATCH HEIGHT OF
LULULEMON SIGN BAND

Sign A



FRONT ELEVATION - PROPOSED

SCALE 3/8" = 1'-0"

FRONT ELEVATION - EXISTING

SCALE 3/16" = 1'-0"

Sign A
Statically illuminated



WALL MOUNTED ILLUMINATED BLADE SIGN

(1) ONE REQUIRED

SCALE 1 1/2" = 1'-0"

3.00 SQUARE FEET

SIGN DETAILS

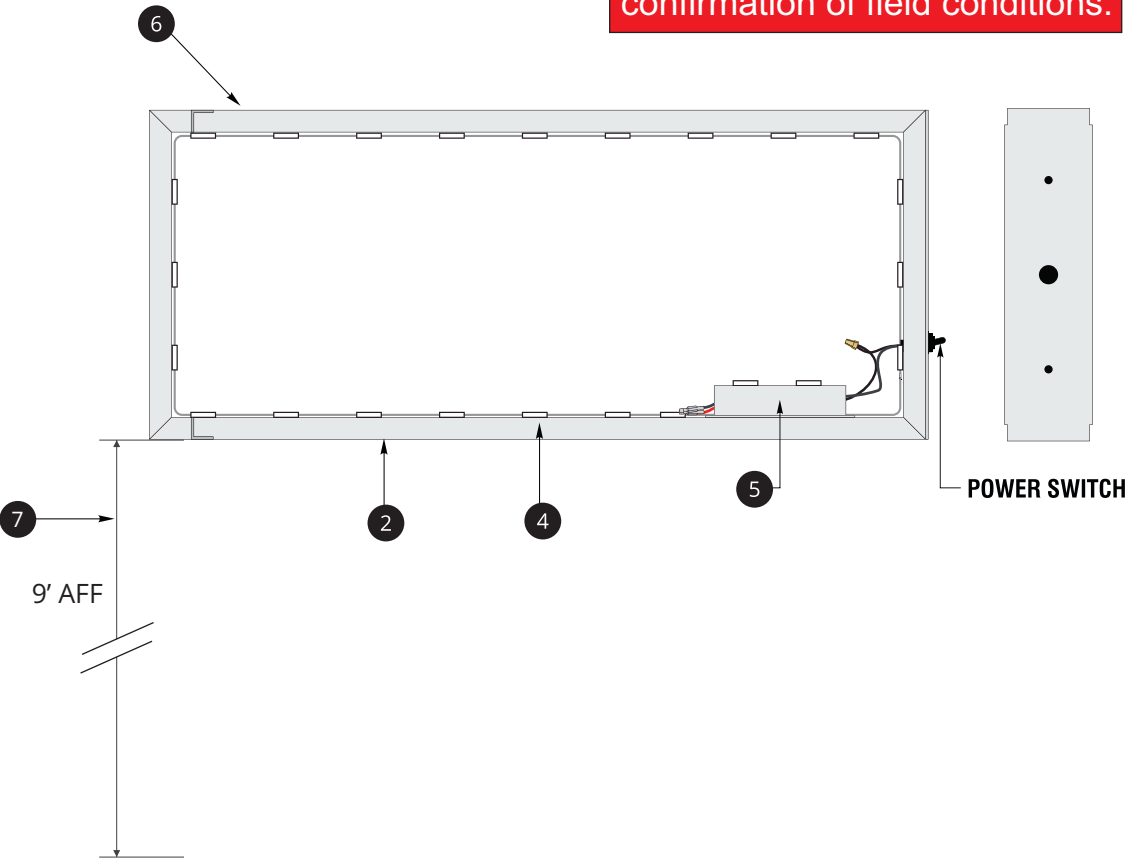
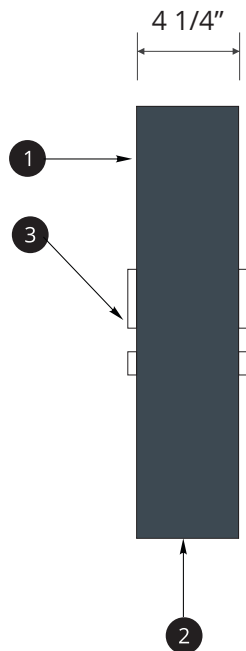
- 1 1/8" ALUMINUM FACES PAINTED PANTONE 432C DARK GREY
- 1" X 2" ALUMINUM TUBE
- 1/2" WHITE 2447 ACRYLIC PUSH THRU LETTERS
- LED (QTY & PLACEMENT DETERMINED BY SIGN SIZE)
- REMOTE 120V POWER SUPPLIES MOUNTED ABOVE SIGN. POWER CABLE PAINTED BLACK TO MATCH AIRCRAFT CABLE
- UL LABLES HIDDEN/PLACED ON TOP OF SIGN
- BOTTOM OF BLADE SIGN TO BE 9' AFF - REPLACE EXISTING
- FACES SLEEVE OVER TUBE FRAME AND ARE SCREWED ON FROM TOP

NOTE: NO SIGN TO PROJECT
MORE THAN 24" FROM FACADE

INSTALLATION NOTES 1: USE NON-CORROSIVE HARDWARE
AND SEAL ALL EXTERIOR FACADE PENETRATIONS WATERTIGHT.

INSTALLATION NOTES 2: ONE DEDICATED (1) 120VAC CIRCUIT BY OTHERS REQUIRED WITHIN 5' OF CENTER OF SIGN.
THIS SIGN IS INTENDED TO BE INSTALLED IN ACCORDANCE WITH THE REQUIREMENTS OF ARTICLE 600 OF THE
NATIONAL ELECTRICAL CODE AND/OR OTHER APPLICABLE CODES. THIS INCLUDES PROPER GROUNDING AND BONDING.

INSTALLATION NOTES 3: GC TO PROVIDE ADEQUATE WOOD
OR METAL BLOCKING IN CORRELATION W/ FACADE FRAMING
AS REQUIRED.



FIELD SURVEY REQUIRED

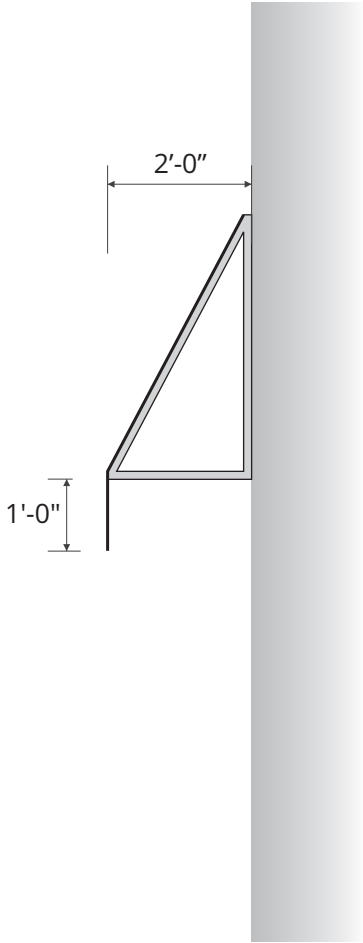
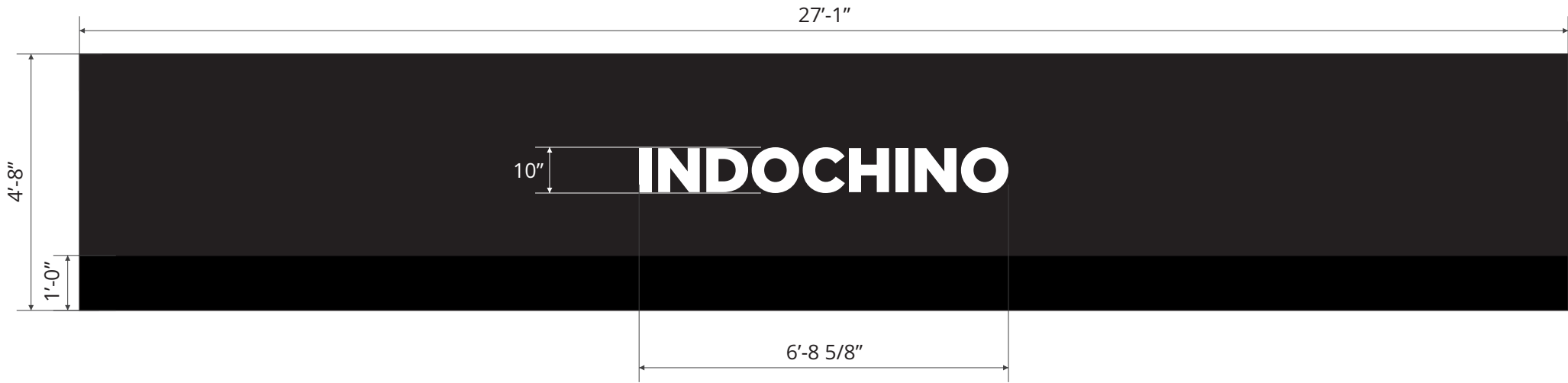
All dimensions are estimated
and subject to change upon
confirmation of field conditions.

SECTION DETAIL

SCALE 3" = 1'-0"

Sign B

NON - Illuminated



AWNING WITH VALANCE

(1) ONE REQUIRED FOR FRONT ELEVATION

SCALE 3/8" = 1'-0"

126.39 SQUARE FEET

SIGN DETAILS

- 1 1" SQUARE ALUMINUM TUBE FRAME, PAINTED BLACK
- 2 CLOSED ENDS
- 3 BLACK SUNBRELLA #4608, FLAME TREATED
- 4 GRAPHICS: 3M WHITE OPAQUE VINYL

NOTE: NO SIGN TO PROJECT MORE THAN 24" FROM FACADE

FIELD SURVEY REQUIRED

All dimensions are estimated and subject to change upon confirmation of field conditions.

Proposed Location.
Existing sign has been removed.
Install signs as per attached plans









Madewell

INDOCHINO

 lululemon

MOVIESAC

Madewell

INDOCHINO

 lululemon







Madewell

 lululemon







