

15 May 2020

The Philadelphia Art Commission  
1515 Arch Street 13<sup>th</sup> Floor  
Philadelphia, PA 19102

Re: Modular Classroom Addition  
William M Meredith School  
725 S 5th St, Philadelphia, PA 19147 (School administrative address)  
713 S 5th St, Philadelphia PA 19147 (Zoning address)  
414 - 436 Monroe Street (Site Address)

To The Philadelphia Art Commission:

The School District of Philadelphia proposes a modular classroom building to serve the William M Meredith School. This project is contracted to Modular Genius LLC, with assistance from consulting architects O Z Collaborative. The Board of Education authorized the Contract by its Action Item number 35, dated August 15, 2019. The approved budget is \$895,000.00 and it is funded through the School District of Philadelphia's General Obligation Bonds, no moneys will come from the City of Philadelphia Capital funds.

The modular classroom building site is located at 414 - 436 Monroe Street, currently utilized for staff parking. The building will occupy part of the site, displacing some of the parking spaces. The building is an independent structure not touching any existing buildings. The building will be set back from Monroe Street about 30 feet. The surrounding neighborhood is characterized by 3 story residential buildings to the north, and mixed commercial and residential uses to the east and west. The school's playground lies directly to the south. A Mural Arts Philadelphia sponsored painting "Peace Through Imagination" by artist Paul Santoleri adorns the east face of the site and will not be impacted by the new addition. The adjacent Meredith School will not be changed.

The Meredith School is located at the northeast intersection of South 5th and Fitzwater Streets in the Bella Vista neighborhood of Philadelphia. The 3 story brick and limestone building was designed in 1930 by Philadelphia School Architect Irwin T. Catherine, in the Art Deco and Late Gothic Revival styles. The proposed building on the adjacent lot does not impact the school..

The new modular classroom building is a one story metal, prefabricated structure. Entrance to the structure will be afforded by a new ramp and stair assembly to the south. Windows are located along the north and south facades. Colors are as follows and illustrated on the drawings enclosed:

Facades: Sherwin Williams " Navajo White" SW3005.  
Trim: Sherwin Williams "Sand Castle" SW3006  
Skirting: Sherwin Williams "Ironwood" SW3028

Please feel free to contact me with any questions.

Sincerely,



William Collett, AIA      wcollett@ozcollaborative.com

Engineer:

**Modular Genius, Inc**

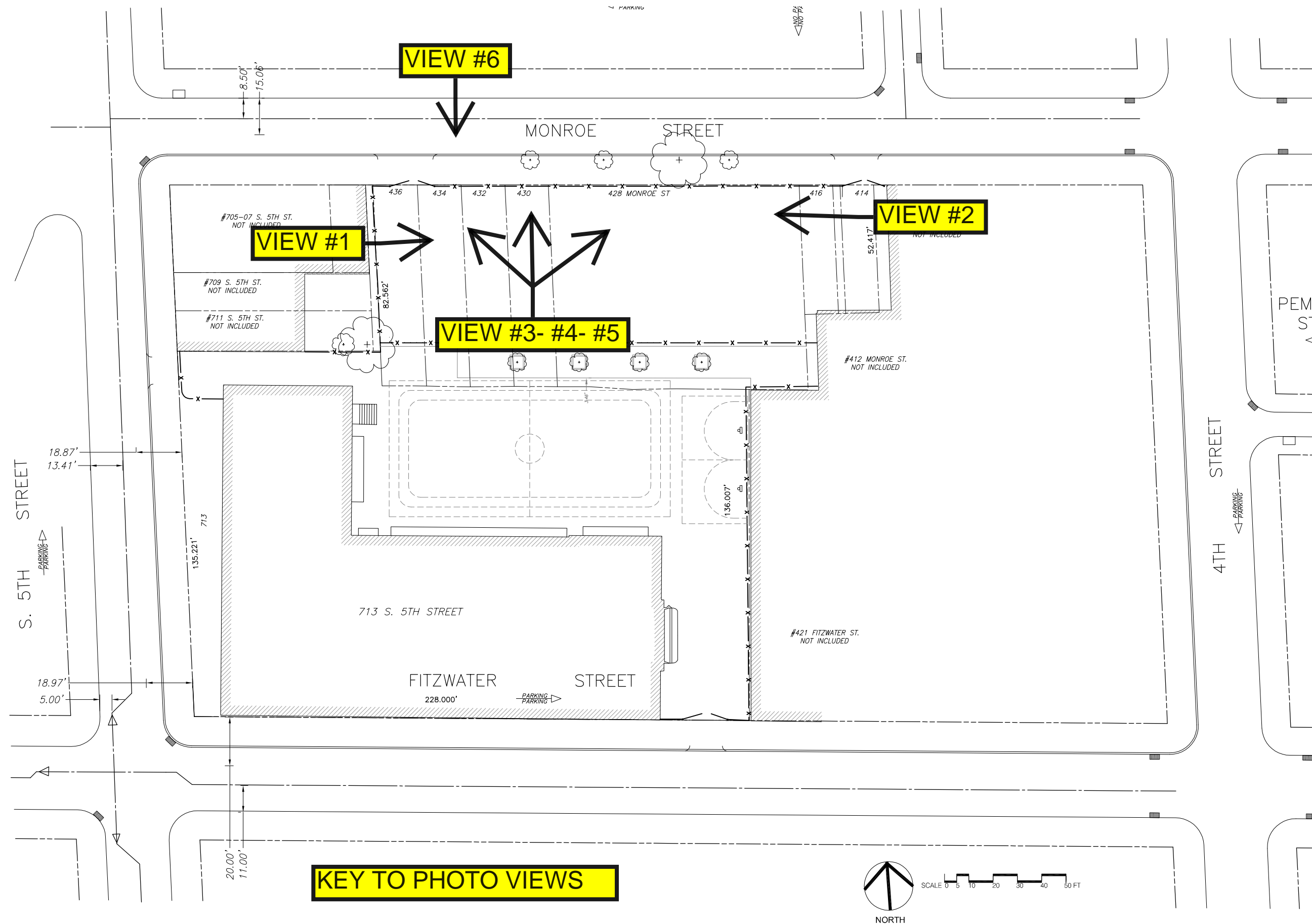
1201 S. Mountain Road  
Joppa, MD 21085

Architect:

**O Z collaborative**

4818 Baltimore Avenue  
Philadelphia, PA 19147  
T: 215-386-8191

Seal:



**PHILADELPHIA ART COMMISSION 15 MAY 2020**

Project:

MODULAR CLASSROOM BUILDING  
MODULAR GENIUS, INC

MEREDITH ELEMENTARY SCHOOL  
725 S 5TH STREET  
PHILADELPHIA PA 19147

no	revisions	date

Sheet Title:  
EXISTING  
SITE PLAN

Scale:

Issue Date:

Drawn By:

The Contractor on site shall verify all dimensions and existing conditions. The Contractor is required to perform all work in compliance with applicable codes and regulations of governing authorities having jurisdiction.

All drawings, specifications, plans, ideas, arrangements and designs represented or referred to are the property of and owned by M and S Engineering Services Inc., whether the project for which they are made is executed or not. None of the above may be disclosed or given to or used by any person, firm or corporation for any use or purpose whatsoever including any other project, except upon written permission and direction of M and S Engineering Services Inc.

Drawing No.



VIEW #1



VIEW #2

Engineer:

**Modular Genius, Inc**

1201 S. Mountain Road  
Joppa, MD 21085

Architect:

**O Z collaborative**

4818 Baltimore Avenue  
Philadelphia, PA 19147  
T: 215-386-8191

Seal:

**PHILADELPHIA ART COMMISSION 15 MAY 2020**

Project:

MODULAR CLASSROOM BUILDING  
MODULAR GENIUS, INC

MEREDITH ELEMENTARY SCHOOL  
725 S 5TH STREET  
PHILADELPHIA PA 19147

no	revisions	date

Sheet Title:

Scale:

Issue Date:

Drawn By:

The Contractor on site shall verify all dimensions and existing conditions. The Contractor is required to perform all work in compliance with applicable codes and regulations of governing authorities having jurisdiction.

All drawings, specifications, plans, ideas, arrangements and designs represented or referred to are the property of and owned by M and S Engineering Services Inc., whether the project for which they are made is executed or not. None of the above may be disclosed or given to or used by any person, firm or corporation for any use or purpose whatsoever including any other project, except upon written permission and direction of M and S Engineering Services Inc.

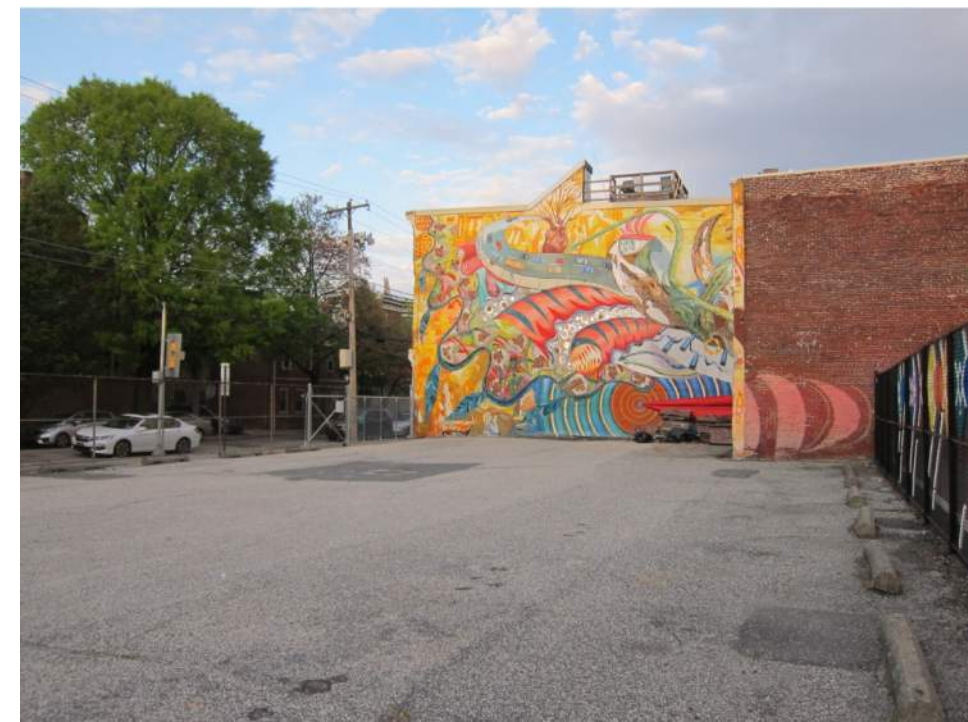
Drawing No.



VIEW #3



VIEW #4



VIEW #5



VIEW #6

Engineer:

**Modular Genius, Inc**

1201 S. Mountain Road  
Joppa, MD 21085

Architect:

**O Z collaborative**

4818 Baltimore Avenue  
Philadelphia, PA 19147  
T: 215-386-8191

Seal:

PHILADELPHIA ART COMMISSION 15 MAY 2020

Project:

MODULAR CLASSROOM BUILDING  
MODULAR GENIUS, INC

MEREDITH ELEMENTARY SCHOOL  
725 S 5TH STREET  
PHILADELPHIA PA 19147

no	revisions	date

Sheet Title:

Scale:

Issue Date:

Drawn By:

The Contractor on site shall verify all dimensions and existing conditions. The Contractor is required to perform all work in compliance with applicable codes and regulations of governing authorities having jurisdiction.

All drawings, specifications, plans, ideas, arrangements and designs represented or referred to are the property of and owned by M and S Engineering Services Inc., whether the project for which they are made is executed or not. None of the above may be disclosed or given to or used by any person, firm or corporation for any use or purpose whatsoever including any other project, except upon written permission and direction of M and S Engineering Services Inc.

Drawing No.

Engineer:

**Modular Genius, Inc**

1201 S. Mountain Road  
Joppa, MD 21085

Architect:

**O Z collaborative**

4818 Baltimore Avenue  
Philadelphia, PA 19147  
T: 215-386-8191

Seal:

Project:

**MODULAR CLASSROOM BUILDING  
MODULAR GENIUS, INC**

**MEREDITH ELEMENTARY SCHOOL  
725 S 5TH STREET  
PHILADELPHIA PA 19147**

no	revisions	date

Sheet Title:  
**PROPOSED  
SITE PLAN**

Scale:

Issue Date:

Drawn By:

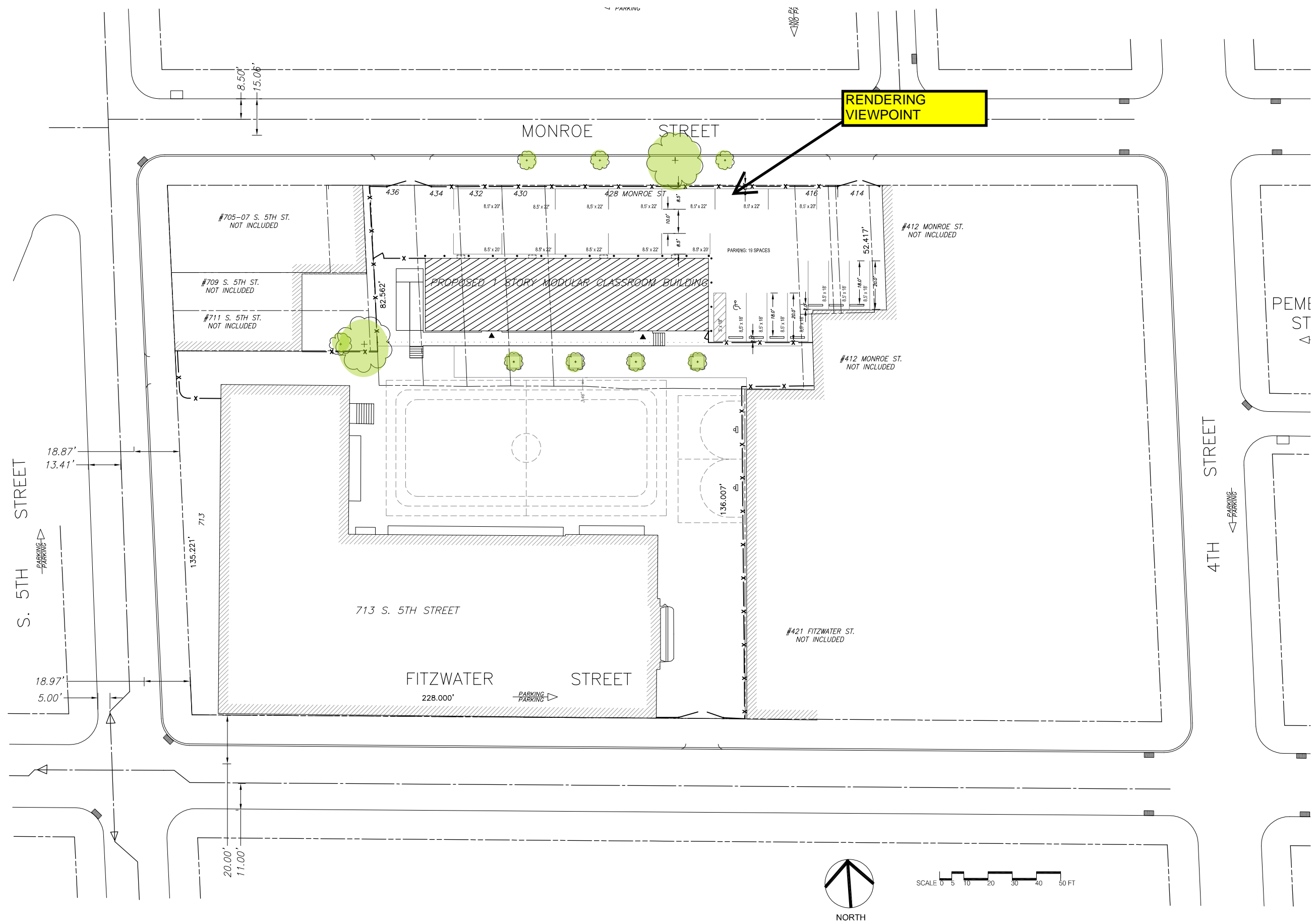
The Contractor on site shall verify all dimensions and existing conditions. The Contractor is required to perform all work in compliance with applicable codes and regulations of governing authorities having jurisdiction.

All drawings, specifications, plans, ideas, arrangements and designs represented or referred to are the property of and owned by M and S Engineering Services Inc., whether the project for which they are made is executed or not. None of the above may be disclosed or given to or used by any person, firm or corporation for any use or purpose whatsoever including any other project, except upon written permission and direction of M and S Engineering Services Inc.

Drawing No.

**PHILADELPHIA ART COMMISSION 15 MAY 2020**

© copyright O Z collaborative





RENDERING: VIEW FROM NORTHEAST ON MONROE STREET  
 (Trees along sidewalk omitted for clarity)

Engineer:

**Modular Genius, Inc**

1201 S. Mountain Road  
 Joppa, MD 21085

Architect:

**O Z collaborative**

4818 Baltimore Avenue  
 Philadelphia, PA 19147  
 T: 215-386-8191

Seal:

**PHILADELPHIA ART COMMISSION 15 MAY 2020**

Project:

MODULAR CLASSROOM BUILDING  
 MODULAR GENIUS, INC

MEREDITH ELEMENTARY SCHOOL  
 725 S 5TH STREET  
 PHILADELPHIA PA 19147

no	revisions	date

Sheet Title:

Scale:

Issue Date:

Drawn By:

The Contractor on site shall verify all dimensions and existing conditions. The Contractor is required to perform all work in compliance with applicable codes and regulations of governing authorities having jurisdiction.

All drawings, specifications, plans, ideas, arrangements and designs represented or referred to are the property of and owned by M and S Engineering Services Inc., whether the project for which they are made is executed or not. None of the above may be disclosed or given to or used by any person, firm or corporation for any use or purpose whatsoever including any other project, except upon written permission and direction of M and S Engineering Services Inc.

Drawing No.

Engineer:

**Modular Genius, Inc**

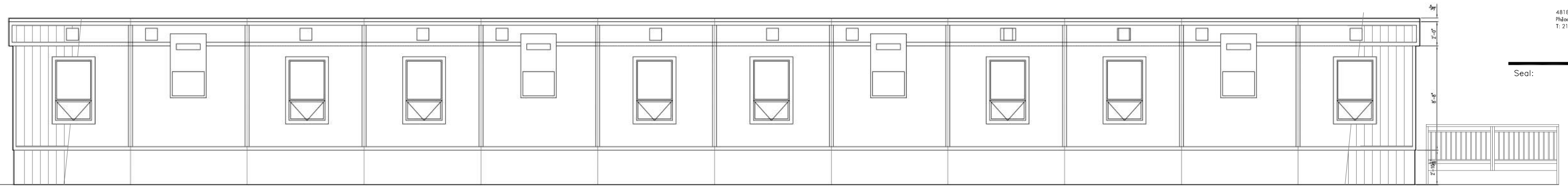
1201 S. Mountain Road  
Joppa, MD 21085

Architect:

**O Z collaborative**

4818 Baltimore Avenue  
Philadelphia, PA 19147  
T: 215-386-8191

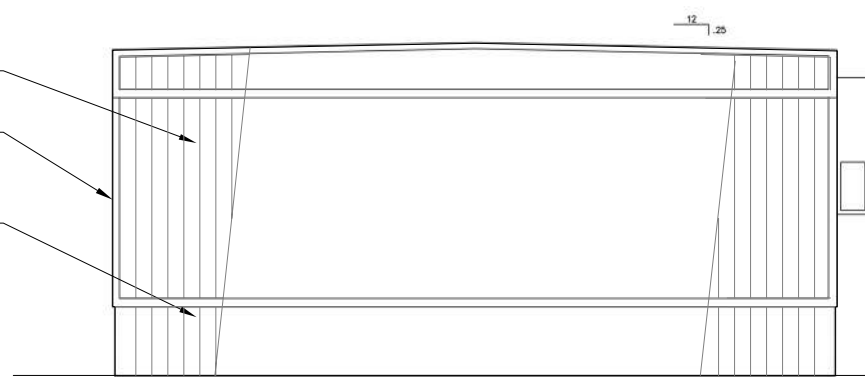
Seal:



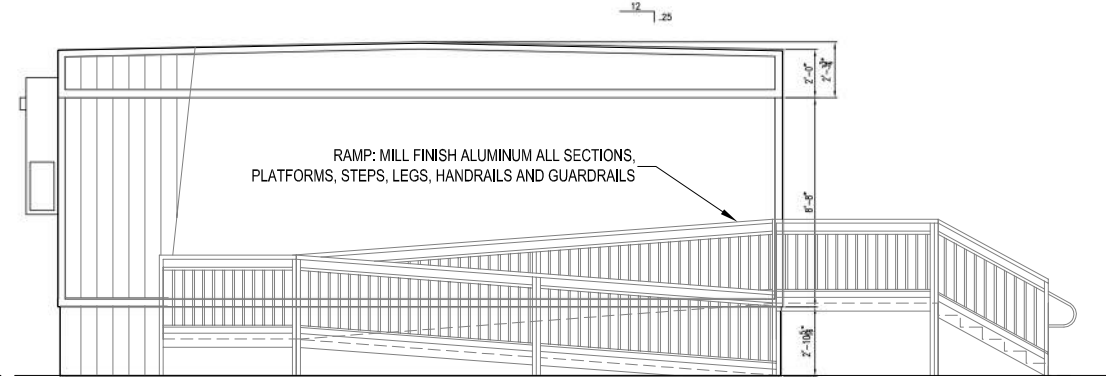
### NORTH ELEVATION (MONROE STREET)

#### COLORS:

- 1 FACADE: 3/8" CEDAR TEXTURE STRUCTURAL WOOD FIBER SIDING COLOR: SHERWIN WILLIAMS "NAVAHO WHITE"
- 2 TRIM: 1 X 4 WOOD TRIM COLOR: SHERWIN WILLIAMS "SAND CASTLE"
- 3 SKIRTING: 3/8" CEDAR SIDING COLOR: SHERWIN WILLIAMS "IRONWOOD"



EAST ELEVATION



WEST ELEVATION



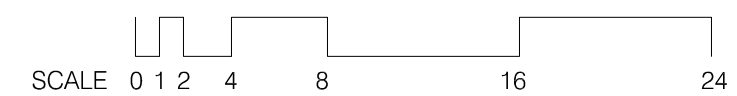
1 Navajo White - SW 3005



2 Sand Castle - SW 3006



3 Ironwood - SW 3028



PHILADELPHIA ART COMMISSION 15 MAY 2020

Project:

MODULAR CLASSROOM BUILDING  
MODULAR GENIUS, INC

MEREDITH ELEMENTARY SCHOOL  
725 S 5TH STREET  
PHILADELPHIA PA 19147

no	revisions	date

Sheet Title:

Scale:

Issue Date:

Drawn By:

The Contractor on site shall verify all dimensions and existing conditions. The Contractor is required to perform all work in compliance with applicable codes and regulations of governing authorities having jurisdiction.

All drawings, specifications, plans, ideas, arrangements and designs represented or referred to are the property of and owned by M and S Engineering Services Inc., whether the project for which they are made is executed or not. None of the above may be disclosed or given to or used by any person, firm or corporation for any use or purpose whatsoever including any other project, except upon written permission and direction of M and S Engineering Services Inc.

Drawing No.

Engineer:

Modular Genius, Inc

1201 S. Mountain Road  
Joppa, MD 21085

Architect:

O Z collaborative

4818 Baltimore Avenue  
Philadelphia, PA 19147  
T: 215-386-8191

Seal:

Project:

MODULAR CLASSROOM BUILDING  
MODULAR GENIUS, INC

MEREDITH ELEMENTARY SCHOOL  
725 S 5TH STREET  
PHILADELPHIA PA 19147

no	revisions	date

Sheet Title:

Scale:

Issue Date:

Drawn By:

The Contractor on site shall verify all dimensions and existing conditions. The Contractor is required to perform all work in compliance with applicable codes and regulations of governing authorities having jurisdiction.

All drawings, specifications, plans, ideas, arrangements and designs represented or referred to are the property of and owned by M and S Engineering Services Inc., whether the project for which they are made is executed or not. None of the above may be disclosed or given to or used by any person, firm or corporation for any use or purpose whatsoever including any other project, except upon written permission and direction of M and S Engineering Services Inc.

Drawing No.

© copyright O Z collaborative

# Specifications: LP® SmartSide® Panel Siding

## Cedar Texture Panel

### Rated for Structural Use by APA®

- Shiplap edges with advanced bead system for easier alignment
- Pre-primed for exceptional paint adhesion
- Significantly lighter than comparable fiber cement panel
- Strong enough to be nailed directly to stud, making additional sheathing unnecessary in many applications
- Eliminates need for additional bracing on load-bearing walls
- Ideal exterior for homes in areas of high winds or seismic activity
- Treated engineered wood strand substrate

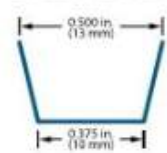
Also available in fiber substrate.

- Not rated for structural use
- Treated engineered wood fiber substrate



Cedar texture

### Groove Detail



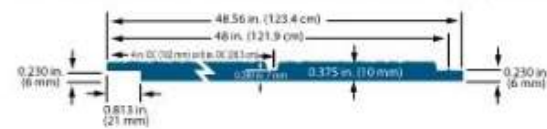
### 38 Series Cedar Texture Panel 8" o.c. (strand)



### 38 Series Cedar Texture Panel - No Groove (strand)



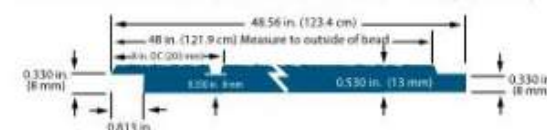
### 76 Series Cedar Texture Panel 4" & 8" o.c. (strand)



### 76 Series Cedar Texture Panel - No Groove (strand)



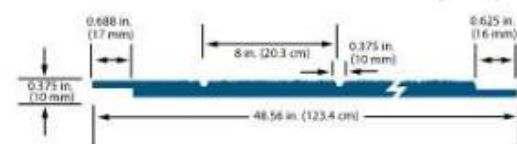
### 190 Series Cedar Texture Panel 8" o.c. (strand)



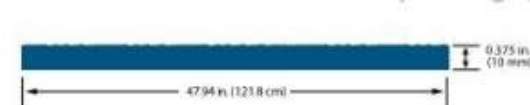
### 190 Series Cedar Texture Panel - No Groove (strand)



### 76 Series Cedar Texture Panel 8" o.c. (fiber)



### 76 Series Cedar Texture Panel - Square Edge (fiber)



## EXTERIOR SIDING MATERIAL

PHILADELPHIA ART COMMISSION 15 MAY 2020

**MATERIALS**  
**Similar Modular Classroom Building**  
**Accokeek, Maryland**



This K8 school in Prince George's County, Maryland illustrates the material palette envisioned at the Meredith School. Paint colors differ, refer to attached elevations and rendering

3/8" CEDAR TEXTURE SIDING

1 X 4 WOOD TRIM

3/8" CEDAR TEXTURE SIDING

MILL FINISH ALUMINUM RAMP COMPONENTS

Engineer:

**Modular Genius, Inc**

1201 S. Mountain Road  
 Joppa, MD 21085

Architect:

**O Z collaborative**

4818 Baltimore Avenue  
 Philadelphia, PA 19147  
 T: 215-386-8191

Seal:

**PHILADELPHIA ART COMMISSION 15 MAY 2020**

Project:

MODULAR CLASSROOM BUILDING  
 MODULAR GENIUS, INC

MEREDITH ELEMENTARY SCHOOL  
 725 S 5TH STREET  
 PHILADELPHIA PA 19147

no	revisions	date

Sheet Title:

Scale:

Issue Date:

Drawn By:

The Contractor on site shall verify all dimensions and existing conditions. The Contractor is required to perform all work in compliance with applicable codes and regulations of governing authorities having jurisdiction.

All drawings, specifications, plans, ideas, arrangements and designs represented or referred to are the property of and owned by M and S Engineering Services Inc., whether the project for which they are made is executed or not. None of the above may be disclosed or given to or used by any person, firm or corporation for any use or purpose whatsoever including any other project, except upon written permission and direction of M and S Engineering Services Inc.

Drawing No.