

D2

D2 GROUPS, LLC

2540 Renaissance Boulevard  
King of Prussia, PA 19406  
tel. 610. 238. 0330 fax 610. 238. 0299  
d2groups.com

FIRSTTRUST BANK

**Rittenhouse Plaza**  
1901 Walnut Street  
Philadelphia, PA 19103

Project No: 19-244

Drawn By: JAW

Checked By: JR

Issue Date: 04/06/20

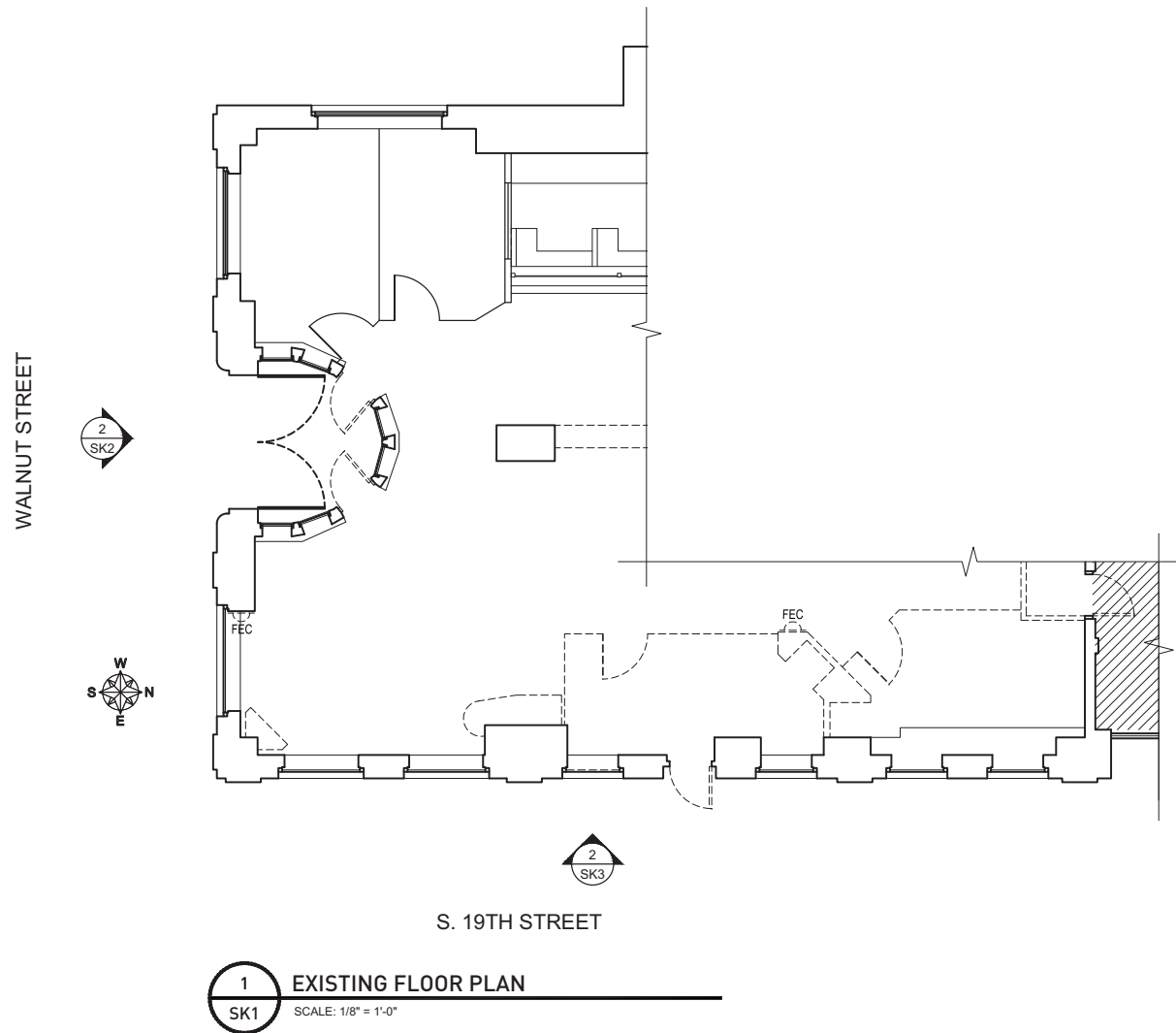
Scale:  $1/4" = 1'-0"$

[illegible]

Drawing:

EXISTING  
FLOOR PLAN

No. SK1



# D2

D2 GROUPS, LLC

2540 Renaissance Boulevard  
King of Prussia, PA 19386  
tel. 610. 238. 0330 fax 610. 238. 0299  
d2groups.com

**FIRSTTRUST BANK**

Rittenhouse Plaza  
1901 Walnut Street  
Philadelphia, PA 19103

Project No: 19-244

Drawn By: JAW

Checked By: JR

Issue Date: 04/06/20

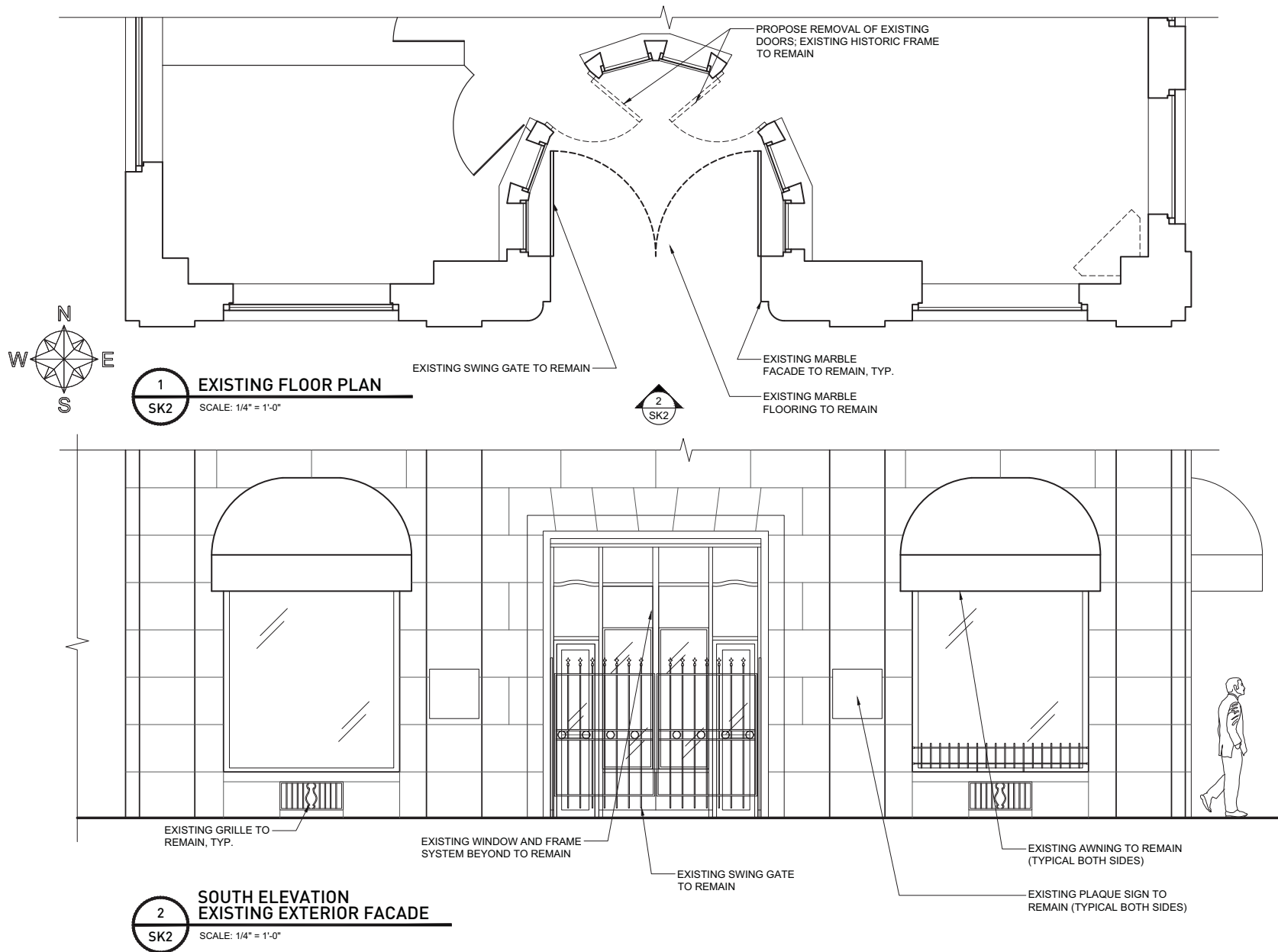
Scale: 1/4" = 1'-0"

No.	Date:	Rev.
1	6/2/20	REV 1

Drawing:

**EXISTING SOUTH  
ELEVATION &  
FLOOR PLAN**

No. SK2



# D2

D2 GROUPS, LLC

2540 Renaissance Boulevard  
King of Prussia, PA 19036  
tel. 610. 238. 0330 fax 610. 238. 0299  
d2groups.com

**FIRSTTRUST BANK**

Rittenhouse Plaza  
1901 Walnut Street  
Philadelphia, PA 19103

Project No: 19-244

Drawn By: JAW

Checked By: JR

Issue Date: 04/06/20

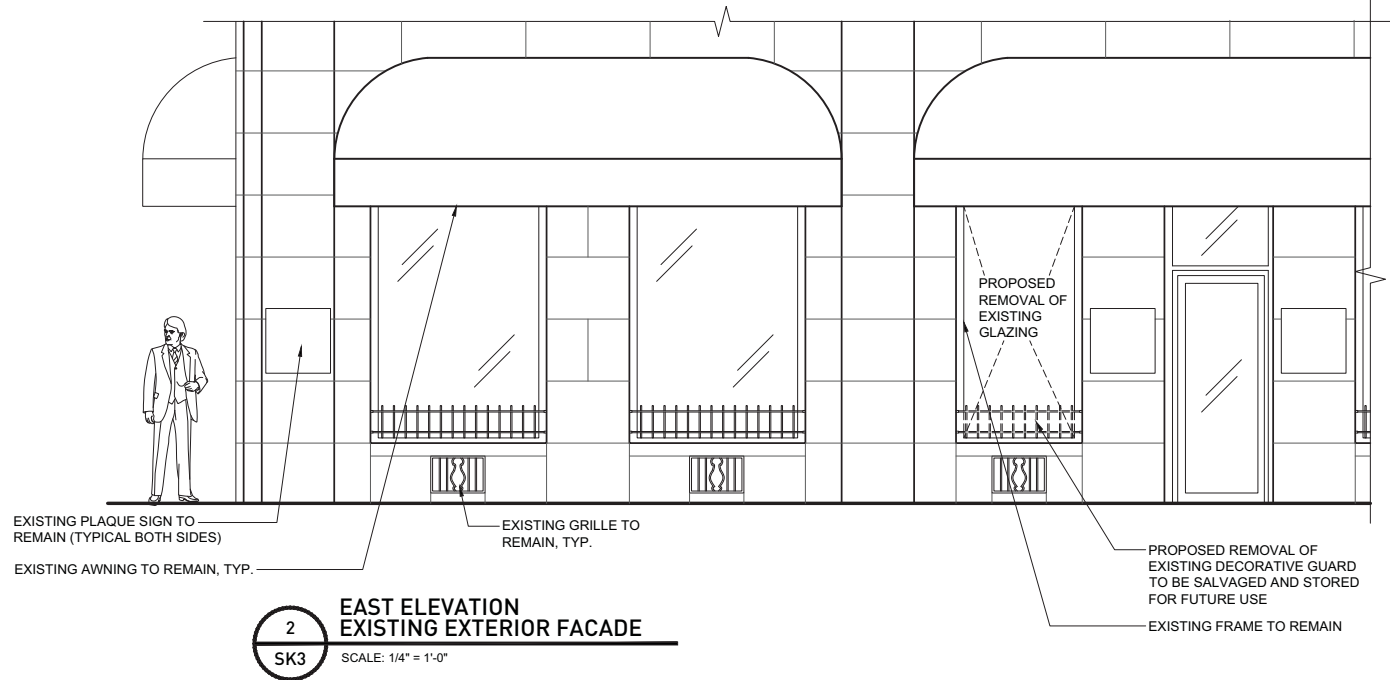
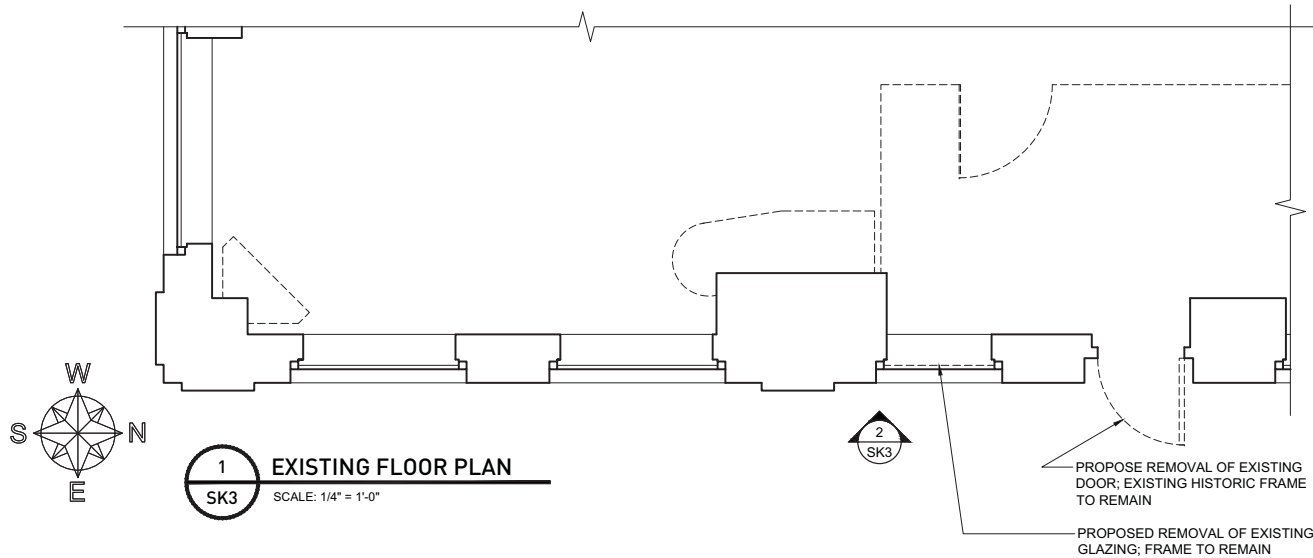
Scale: 1/4" = 1'-0"

No.	Date:	Rev.
1	6/2/20	REV 1

Drawing:

**EXISTING EAST  
ELEVATION &  
FLOOR PLAN**

No. SK3



D2

D2 GROUPS, LLC

2540 Renaissance Boulevard  
King of Prussia, PA 19406  
tel. 610. 238. 0330 fax 610. 238. 0299  
d2groups.com

FIRSTTRUST BANK

**Rittenhouse Plaza**  
1901 Walnut Street  
Philadelphia, PA 19103

Project No: 19-244

Drawn By: JAW

Checked By: JR

Issue Date: 04/06/20

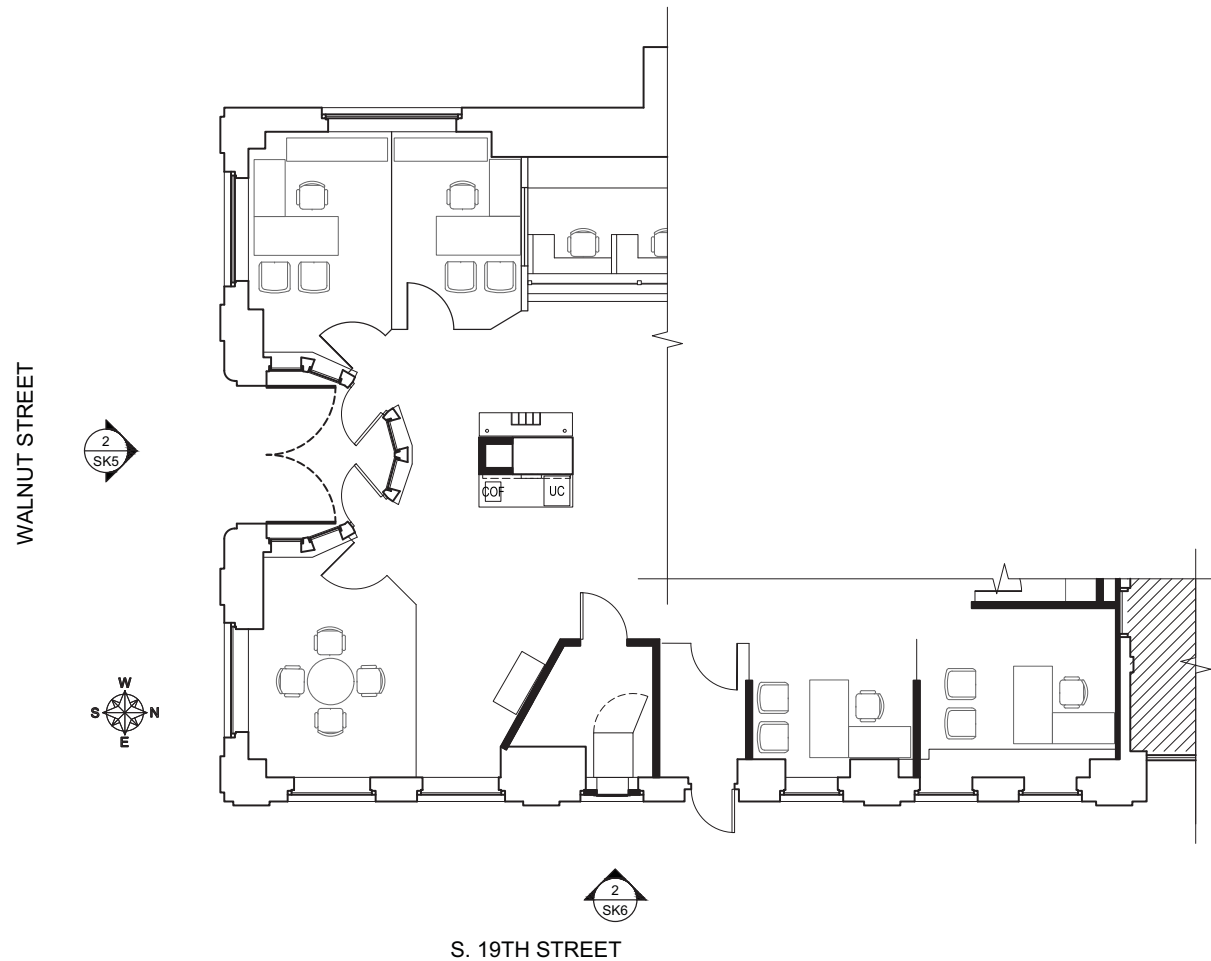
Scale:  $1/4" = 1'-0"$

[illegible]

**Drawing:**

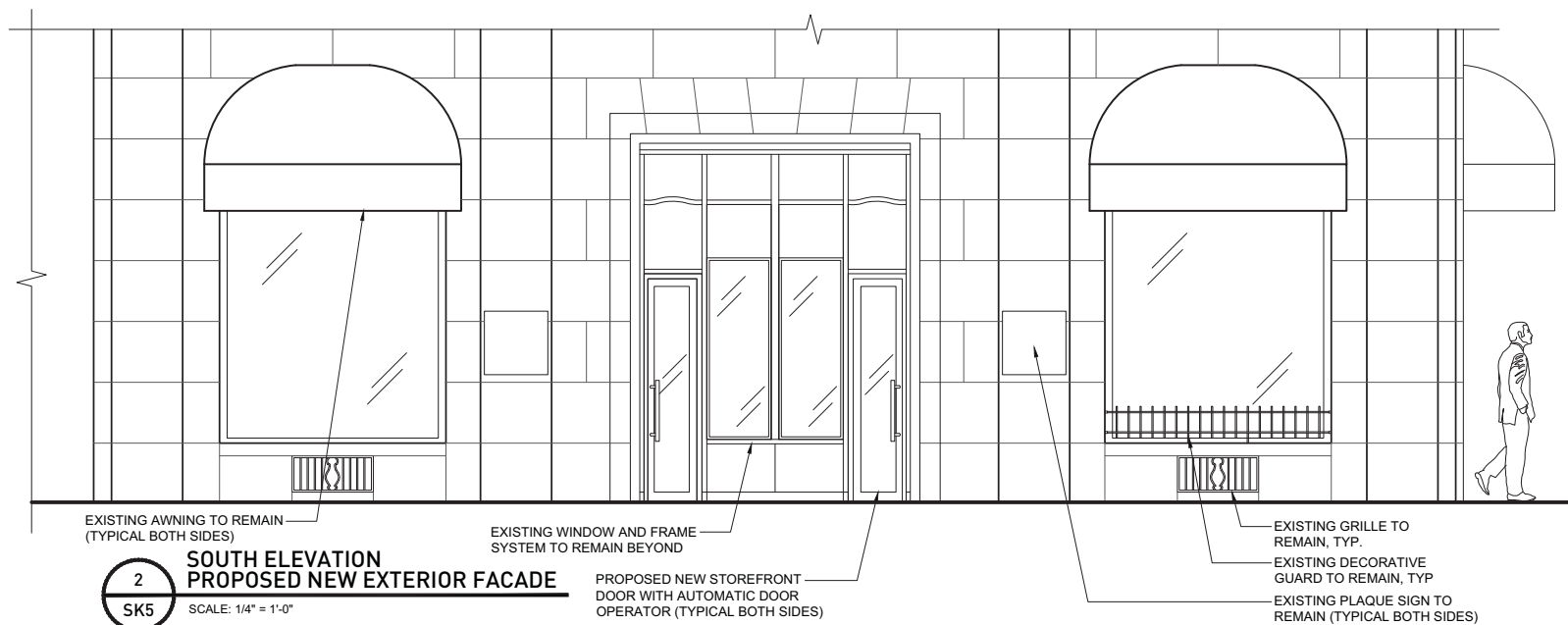
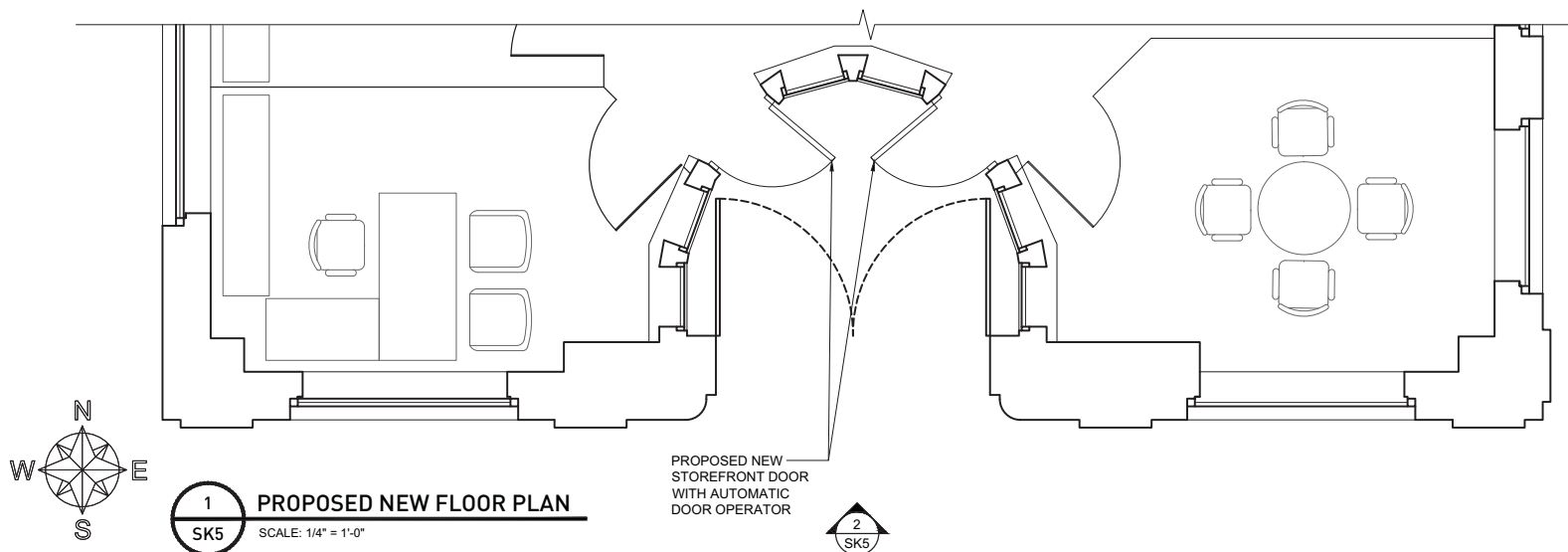
## PROPOSED NEW FLOOR PLAN

No. SK4



1 PROPOSED NEW FLOOR PLAN  
SK4 SCALE: 1/8" = 1'-0"

SCALE: 1/8" = 1'-0"



D2

D2 GROUPS, LLC

2540 Renaissance Boulevard  
King of Prussia, PA 19036  
tel. 610. 238. 0330 fax 610. 238. 0299  
d2groups.com

**FIRSTTRUST BANK**  
Rittenhouse Plaza  
1901 Walnut Street  
Philadelphia, PA 19103

Project No: 19-244

Drawn By: JAW

Checked By: JR

Issue Date: 04/06/20

Scale: 1/4" = 1'-0"

No.	Date:	Rev.
1	6/2/20	REV 1

Drawing:  
**PROPOSED  
SOUTH  
ELEVATION &  
FLOOR PLAN**

No. SK5





PHOTO 1 - AERIAL VIEW



PHOTO 2 - AERIAL VIEW



PHOTO 3 - SOUTH FACADE



PHOTO 4 - SOUTH-EAST FACADE



D2 GROUPS, LLC

2540 Renaissance Boulevard  
King of Prussia, PA 19106  
tel. 610. 238. 0330 fax 610. 238. 0299  
d2groups.com

## FIRSTTRUST BANK

Rittenhouse Plaza  
1901 Walnut Street  
Philadelphia, PA 19103

Project No: 19-244

Drawn By: JAW

Checked By: JR

Issue Date: 04/06/20

Scale: --

No.	Date	Rev.
1	6/2/20	REV 1

Drawing:

**SUPPORTING  
IMAGES**

No. SK7





PHOTO 5 - SOUTH FACADE



PHOTO 6 - SOUTH FACADE

D2

D2 GROUPS, LLC

2540 Renaissance Boulevard  
King of Prussia, PA 19106  
tel. 610. 238. 0330 fax 610. 238. 0299  
d2groups.com

**FIRSTTRUST BANK**  
Rittenhouse Plaza  
1901 Walnut Street  
Philadelphia, PA 19103

Project No:	19-244
Drawn By:	JAW
Checked By:	JR
Issue Date:	04/06/20
Scale:	--

No.	Date:	Rev:
1	6/2/20	REV 1

Drawing:  
**SUPPORTING  
IMAGES**

No. SK8





PHOTO 7 - SOUTH FACADE



PHOTO 10 - SOUTH ENTRANCE



PHOTO 8 - SOUTH ENTRANCE



PHOTO 9 - SOUTH ENTRANCE



PHOTO 11 - SOUTH ENTRANCE



D2 GROUPS, LLC

2540 Renaissance Boulevard  
King of Prussia, PA 19406  
tel. 610. 238. 0330 fax 610. 238. 0299  
d2groups.com

**FIRSTTRUST BANK**  
Rittenhouse Plaza  
1901 Walnut Street  
Philadelphia, PA 19103

Project No: 19-244

Drawn By: JAW

Checked By: JR

Issue Date: 04/06/20

Scale: --

No.	Date:	Rev.
1	6/2/20	REV 1

Drawing:  
**SUPPORTING  
IMAGES**

**No. SK9**





PHOTO 12 - SOUTH EAST FACADE



PHOTO 14 - EAST FACADE



PHOTO 13 - SOUTH EAST FACADE



PHOTO 15 - EAST FACADE

D2

D2 GROUPS, LLC

2540 Renaissance Boulevard  
King of Prussia, PA 19106  
tel. 610. 238. 0330 fax 610. 238. 0299  
d2groups.com

**FIRSTTRUST BANK**

Rittenhouse Plaza  
1901 Walnut Street  
Philadelphia, PA 19103

Project No: 19-244

Drawn By: JAW

Checked By: JR

Issue Date: 04/06/20

Scale: --

No.	Date:	Rev:
1	6/2/20	REV 1

Drawing:

**SUPPORTING  
IMAGES**

**No. SK10**





PHOTO 16 - EAST FACADE



PHOTO 17 - EAST FACADE



PHOTO 18 - EAST FACADE



D2 GROUPS, LLC

2540 Renaissance Boulevard  
King of Prussia, PA 19006  
tel. 610. 238. 0330 fax 610. 238. 0299  
d2groups.com

## FIRSTTRUST BANK

Rittenhouse Plaza  
1901 Walnut Street  
Philadelphia, PA 19103

Project No: 19-244

Drawn By: JAW

Checked By: JR

Issue Date: 04/06/20

Scale: --

No.	Date:	Rev:
1	6/2/20	REV 1

Drawing:

**SUPPORTING  
IMAGES**

**No. SK11**

# D2

D2 GROUPS, LLC  
 2540 Renaissance Boulevard  
 King of Prussia, PA 19406  
 tel. 610. 238. 0330 fax 610. 238. 0299  
 d2groups.com

**FIRSTTRUST BANK**  
 Rittenhouse Plaza  
 1901 Walnut Street  
 Philadelphia, PA 19103

Project No: 19-244

Drawn By: JAW

Checked By: JR

Issue Date: 04/06/20

Scale: --

No.	Date	Rev.
1	6/2/20	Rev 1

Drawing:  
 RENDERINGS

No. SK12

PROPOSED NEW WALK-UP  
 ATM; EXISTING GLASS  
 WINDOW TO BE REPLACED  
 WITH SPANDREL GLASS



RENDERING 1 - SOUTH-EAST FACADE



RENDERING 2 - EAST FACADE

# AA®250 and AA®425 Thermal Entrance Doors

A new kind of thermal roadblock

Proposed new entry  
doors on south facade



As architects and building owners look for ways to decrease a building's energy consumption and energy costs, the need for thermally efficient products has increased throughout North America. Kawneer continues to set the standard in thermal performance with its innovative AA®250 and AA®425 Thermal Entrance Doors. In conjunction with Kawneer's high-performing frame, the doors offer improved thermal efficiency compared to a standard door. By combining critical elements within the product design, the AA®250 and AA®425 Thermal Entrance Doors create a superior thermal roadblock. The thermal roadblock formula includes thermal breaks in the door, door frame and threshold that isolate the interior metal components from the exterior metal components; a door rail and stile design with a double air cavity provides an added layer to the thermal barrier; and dual weathering around the perimeter of the door in conjunction with a low conductance polymer door stop minimizes air infiltration.

The benefits of Kawneer's AA®250 and AA®425 Thermal Entrance Doors extend beyond industry-leading thermal performance. The company has introduced design flexibility in hardware options and injected value to support virtually any budget. Advanced thermally broken systems allow building owners to take advantage of tax incentive programs and green building certifications such as Leadership in Energy and Environmental Design (LEED®)\*. And, with its proven performance and welded corner construction, Kawneer's AA®250 and AA®425 Thermal Entrance Doors are the ideal choice for any commercial or institutional application.

\*LEED is a registered trademark of the U.S. Green Building Council.



## Performance

To achieve new heights of thermal performance, Kawneer pulled out all the stops in engineering the AA®250 and AA®425 doors. In addition to thermal breaks, Kawneer has added its proven corner construction, which has four Sigma deep penetration and fillet welds, plus mechanical fastening at each corner.

The immediate door frame jambs and transom bar/door header tout a dual perimeter weather seal featuring Kawneer's Sealair bulb weathering. Also featured is a triple-finned, soft pile weather stripping that minimizes airflow around the perimeter edge of the door. At the bottom of the door, the combination of a thermally broken threshold and dual bottom door sweeps minimizes air infiltration. All of this adds up to a superior thermal roadblock that provides improved comfort and savings in heating and cooling costs.

The AA®250 and AA®425 accommodate 1" insulating glass and insulating laminated glass to improve thermal and sound reduction performance. Laminated glass enhances STC and OITC (sound resistance) performance as well as improves occupant safety. Kawneer's thermal entrance doors have been tested and proven in accordance with North American performance standards for air, structural, condensation, thermal and sound transmission.

### PERFORMANCE TEST STANDARDS

Air Infiltration	ASTM E 283
Structural – Uniform Wind Load	ASTM E 330
Sound Transmission (STC, OITC)	ASTM E90, E1425
Condensation Resistance (CRF, I, CR)	AAMA 1503; CSA A440.2; NFRC 500
Thermal Transmittance (U-Factor)	AAMA 1503, 507; NFRC 100

## Aesthetics

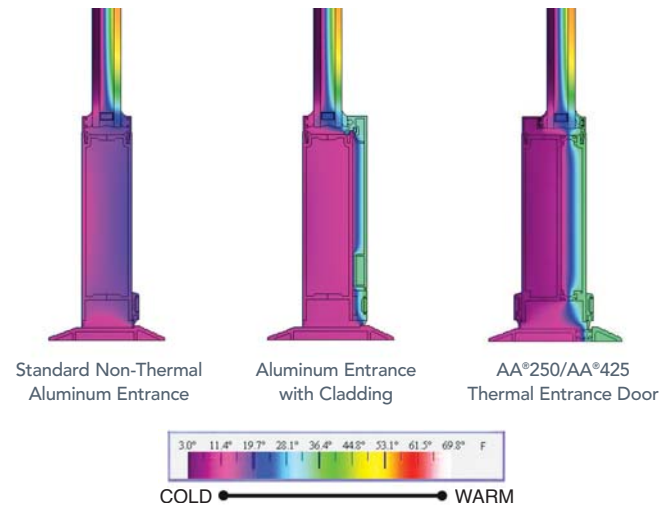
Breaking from tradition, Kawneer's AA®250 and AA®425 deliver a new aesthetic look with a 2-1/2" narrow stile and a 4-1/4" wide stile, respectively. To meet aesthetic and hardware application requirements, the entrances are also offered with a range of top and bottom rails.

	AA®250	AA®425
Stile widths	2-1/2" (63.5 mm)	4-1/4" (108 mm)
Top rail	2-1/2" (63.5 mm)	4-1/4" (108 mm)
Bottom rail	3-7/8" (98.4 mm)	6-1/2" (165.1 mm)

Horizontal mid-rails are available in 1-3/8" (34.9 mm) and 8-1/4" (209.6 mm) sizes. In addition, a 10" bottom rail option can be specified.

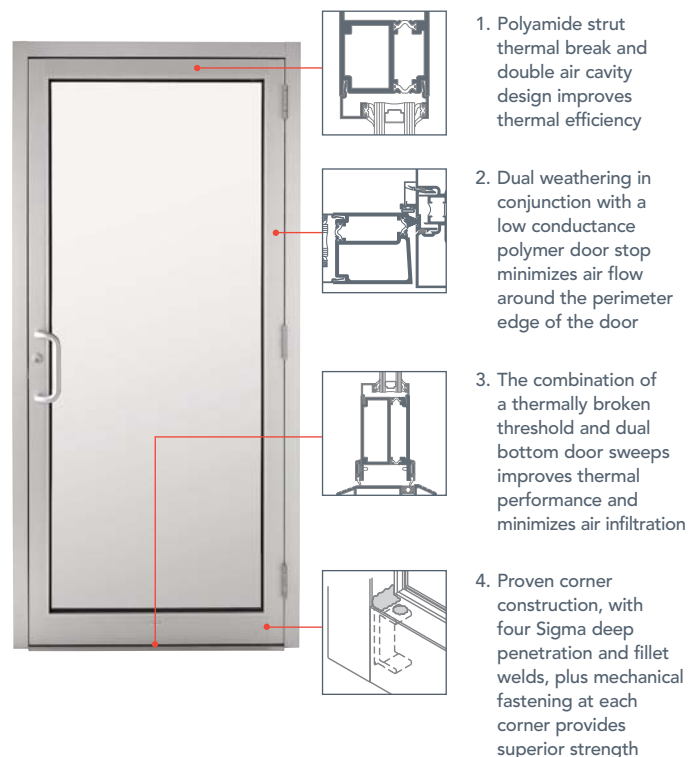
The 2-1/4" (57.2 mm) depth door uses a 14 mm polyamide strut thermal break that accommodates a dual finish as well as various combinations of hinging and locking hardware. These include offset pivots, butt hinges, continuous gear hinges, MS locking, concealed vertical rod exit devices and rim exit devices.

Thermal simulations showing temperature variations from exterior/cold side to interior/warm side.



## For the Finishing Touch

Architectural Class I anodized aluminum finishes are available in clear and color choices. Painted finishes, including fluoropolymer, that meet AAMA 2605 standards and solvent-free powder coatings that meet AAMA 2604 standards are available in a variety of color choices.



Kawneer Company, Inc.  
Technology Park / Atlanta  
555 Guthridge Court  
Norcross, GA 30092

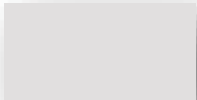
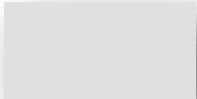


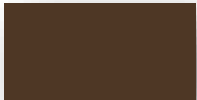
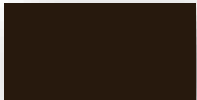
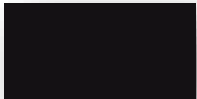
kawneer.com  
kawneergreen.com  
770 . 449 . 5555



### Kawneer Anodize finishes

Kawneer gives you a wide variety of anodized finishes with attractive alternatives. The benefit of a durable, anodized finish is married to the beauty of some very dynamic and exciting colors.

At the start of every design, there's a choice of how you want to finish. Contact your Kawneer sales rep for the information on these and other finishes available from Kawneer.

	KAWNEER FINISH NO.	COLOR	ALUMINUM ASSOCIATION SPECIFICATION	OTHER COMMENTS
	#14	CLEAR	AA-M10C21A41 / AA-M45C22A41	Architectural Class I (.7 mils minimum)
	#17	CLEAR	AA-M10C21A31	Architectural Class II (.4 mils minimum)
	#18	CHAMPAGNE	AA-M10C21A44	Architectural Class I (.7 mils minimum)
	#26	LIGHT BRONZE	AA-M10C21A44	Architectural Class I (.7 mils minimum)
	#28	MEDIUM BRONZE	AA-M10C21A44	Architectural Class I (.7 mils minimum)
	#40	DARK BRONZE	AA-M10C21A44 / AA-M45C22A44	Architectural Class I (.7 mils minimum)
	#29	BLACK	AA-M10C21A44	Architectural Class I (.7 mils minimum)

Experience a safer  
and more open world

## Rockwood RM3131 - Groove - Offset Pull - Flat Ends



Dark Oxidized Satin Bronze

### Available Finishes:

- US3/605
- US4/606
- US10/612
- US10B/613
- **US10BE/613E**
- US32/629
- US32D/630

DIAMETER:  
1"

Overall: **24"**  
Up to 96

PROJECTION:  
2 1/2"

Proposed Door pull at proposed new  
entry doors on south facade

## Specifications:

**MATERIAL:**  
Aluminum, Brass, Bronze, Stainless Steel