

COVER LETTER

March 18, 2020

William J. Burke, Jr., Director
Philadelphia Art Commission
1515 Arch Street - 13th Floor
Philadelphia PA 19102

Re: Submission of Site Improvement Project at Joseph Pennell Elementary School for Approval by the Philadelphia Art Commission

Dear Mr. Burke,

I am pleased to submit the enclosed description for proposed site improvements for Joseph Pennell Elementary School at 1800 W. Nedro Avenue, Philadelphia PA 19141 in the Belfield neighborhood of Philadelphia.

Project Information

The Joseph Pennell Elementary School was the recipient of a William Penn Foundation Grant for converting an asphalt schoolyard into a high-quality, green outdoor playful learning space for the school and surrounding community. The intent is to create a new widely-used community asset that provides a model of how play space can enhance progress toward literacy growth as indicated by student, school, and community surveys.

The concept for Pennell Schoolyard, developed by Mural Arts Restored Spaces Initiative (MARSi) in collaboration with students at Pennell School, is “Circles of Creativity and Care”. MARSi engaged with the students over many months to develop stories about play and learning, create drawings to correspond with their stories, and play a custom board-game to facilitate student input about the vision for a new schoolyard. From the game play, MARSi consolidated the results to guide where site improvements and specific types of programming could occur on the schoolyard.

In addition, literacy and learning goals (identified as the Six C’s noted in the Playful Learning Initiative) were documented and prioritized throughout this process. Of the Six C’s, four rose to the top as priorities for the students at Pennell School: 1) collaboration, 2) content, 3) communication, and 4) creative innovation. Using the information and concept “Circles of Creativity and Care” developed by MARSi, SALT DESIGN STUDIO (SALT) created a schematic site plan that incorporates the programs, play elements, and learning goals as prioritized by the students. Taking into consideration the existing physical conditions of the schoolyard, and the disturbance restrictions, SALT designed a schoolyard organized into six differently programmed circles:

- The **Story Circle** is designed to promote outdoor learning by providing an area for teachers to bring their curriculum outdoors. Other intended uses include outdoor reading and storytelling, passive play (such as Mellow Yellow), and down time or socializing. The circle is created by curved wood seating with a central low ottoman for multi-purpose uses. It’s surrounded by a new plant bed that will have native perennials, grasses, understory and canopy trees. A nature trail meanders through the plant bed so children can explore different plants, identify pollinators, and create their own play in nature. This area will also include a little free library, that will be designed and built by MARSi, volunteering community members, and students.
- The **Learning Circles** are made from colorful paint on the pavement. The circles are intended to feature different learning opportunities and other colorful graphics painted on the pavement (such as US or Philadelphia maps, the alphabet, rulers, numbers or similar).

- The **Performance Circle** features a semi-circular stage and adjacent tiered seating and benches. A curved band of trees in pavement creates shade and brings green space into the middle of the schoolyard. Drums and other stationary outdoor instruments will allow students to create their own music and performances. Behind the stage will be an expanded lawn area with canopy trees for students to sit and play.
- The **Sports Circle** is an area designated for basketball, running, and other sports. Three half basketball courts surround a central pole with different height baskets for a variety of age groups and skill levels. Tiered seating flanks the eastern side of the basketball area.
- The **Active Play Circle** showcases colorful rubber safety surface and playground equipment for kids to exercise through climbing, swinging, jumping, spinning, and balancing. The circle is encompassed by benches, canopy trees in pavement, and a plant bed with native perennials and grasses, as well as flowering understory and deciduous canopy trees.
- The **Relaxation Circle** is designed for passive play (such as Mellow Yellow), down-time, solo quiet play, and low-key socializing. Curved wood seating and individual seating pods are tucked against the building to create a safe space for kids to relax, socialize, and de-stress.

SALT's design proposes de-paving large sections of the schoolyard to increase green space across the site to promote healthier ecosystems, provide shade, and reduce the urban heat island affect. Site amenities, such as benches, trash and recycling receptacles, signage, and lighting are also proposed throughout the schoolyard.

SALT intends to continue to develop the design to promote the learning and literacy goals in an outdoor setting. Pavement treatments throughout the schoolyard are intended to create learning prompts for students to activate on their own, or for teachers to use with their students. We intend for the pavement treatments to be colorful, fun and attractive to bring life and excitement outdoors.

Our team is requesting administrative approval from the Philadelphia Art Commission to proceed with the project as shown.

For questions or comments, please contact me using the following information:

Katrina Rogus, RLA
Project Manager / Landscape Architect
SALT DESIGN STUDIO
4100 Main Street, Suite 201
Philadelphia, PA 19127
E: katrina@saltdesigns.com
T: (215) 621-7600

Sincerely,



Katrina Rogus, RLA

PHOTOGRAPHS



EXISTING AERIAL PHOTO



PHOTO 1: Existing Planters at Pre-K Building; Location of 'Early Action' Project by Mural Arts & Community Members

PHOTOGRAPHS



PHOTO 2: Existing Concrete Schoolyard;
Location of STORY CIRCLE with New Outdoor Classroom, Plant Bed, and Nature Trail



PHOTO 3: Existing Dumpsters in Schoolyard;
Location of PERFORMANCE CIRCLE with New Stage and Expanded Plant Bed

PHOTOGRAPHS



PHOTO 4: Existing Concrete Schoolyard;
Location of SPORTS CIRCLE with New Basketball / Multi-Purpose Court



PHOTO 5: Existing Concrete Schoolyard;
Location of ACTIVE PLAY CIRCLE with New Play Equipment

PHOTOGRAPHS



PHOTO 6: Existing Concrete Schoolyard and Basketball Hoop;
Location of ACTIVE PLAY CIRCLE with New Play Equipment

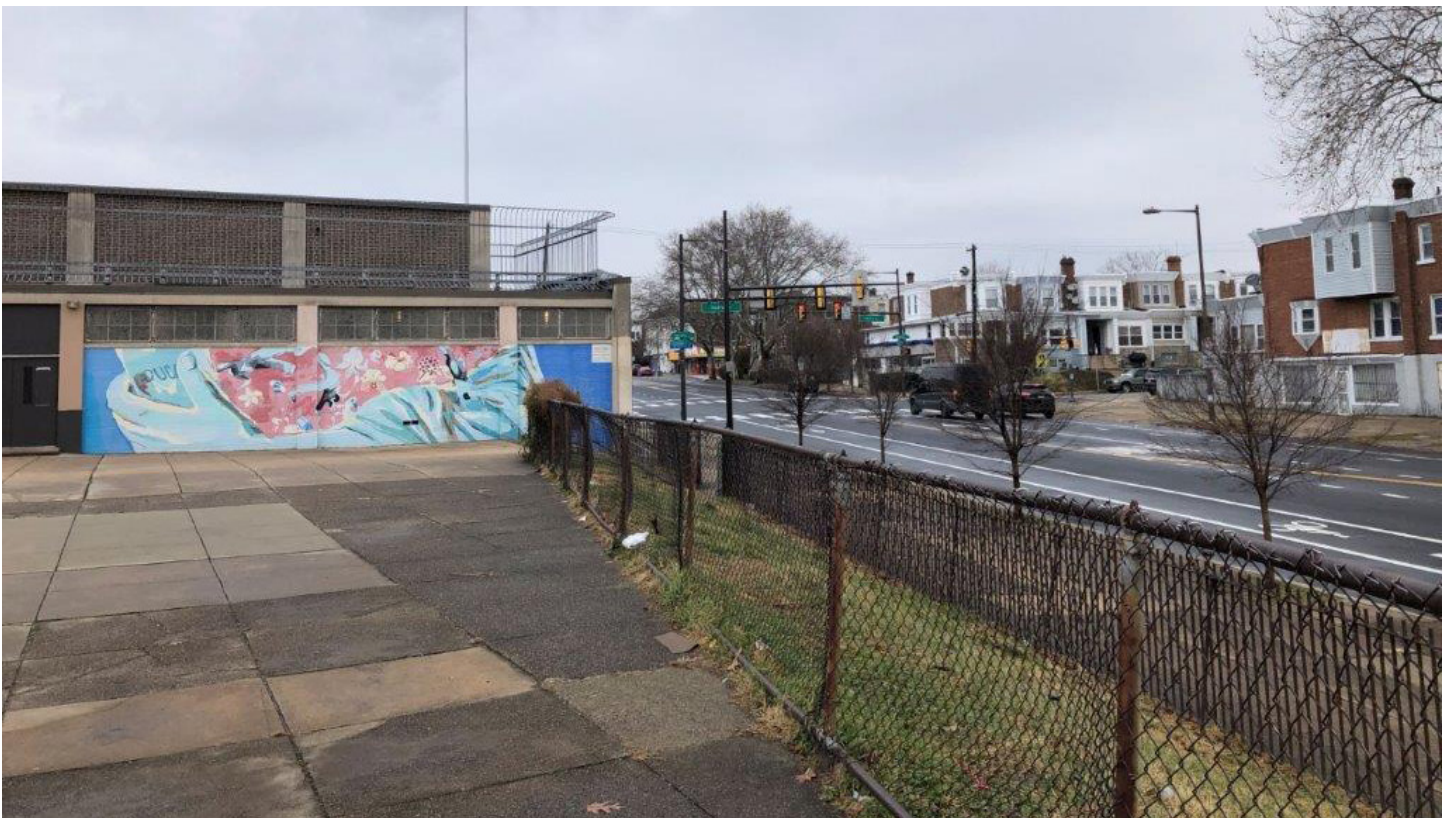
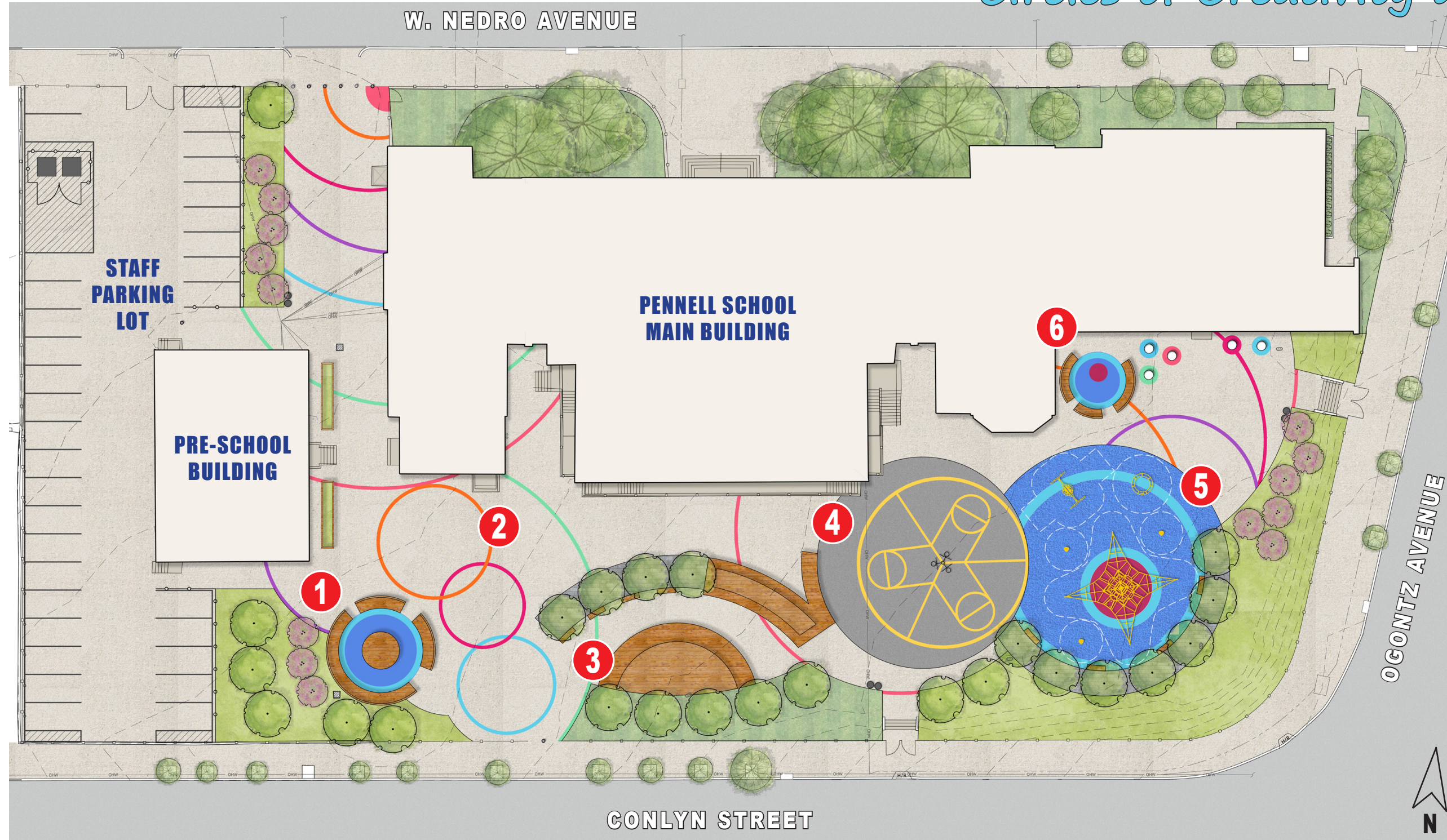


PHOTO 7: Existing Mural and Plant Bed;
Location of RELAXATION CIRCLE and Expanded Plant Bed

PENNELL SCHOOLYARD

Circles of Creativity and Care



- 1 STORY CIRCLE**
- 2 LEARNING CIRCLE**
- 3 PERFORMANCE CIRCLE**
- 4 SPORTS CIRCLE**
- 5 ACTIVE PLAY CIRCLE**
- 6 RELAXATION CIRCLE**

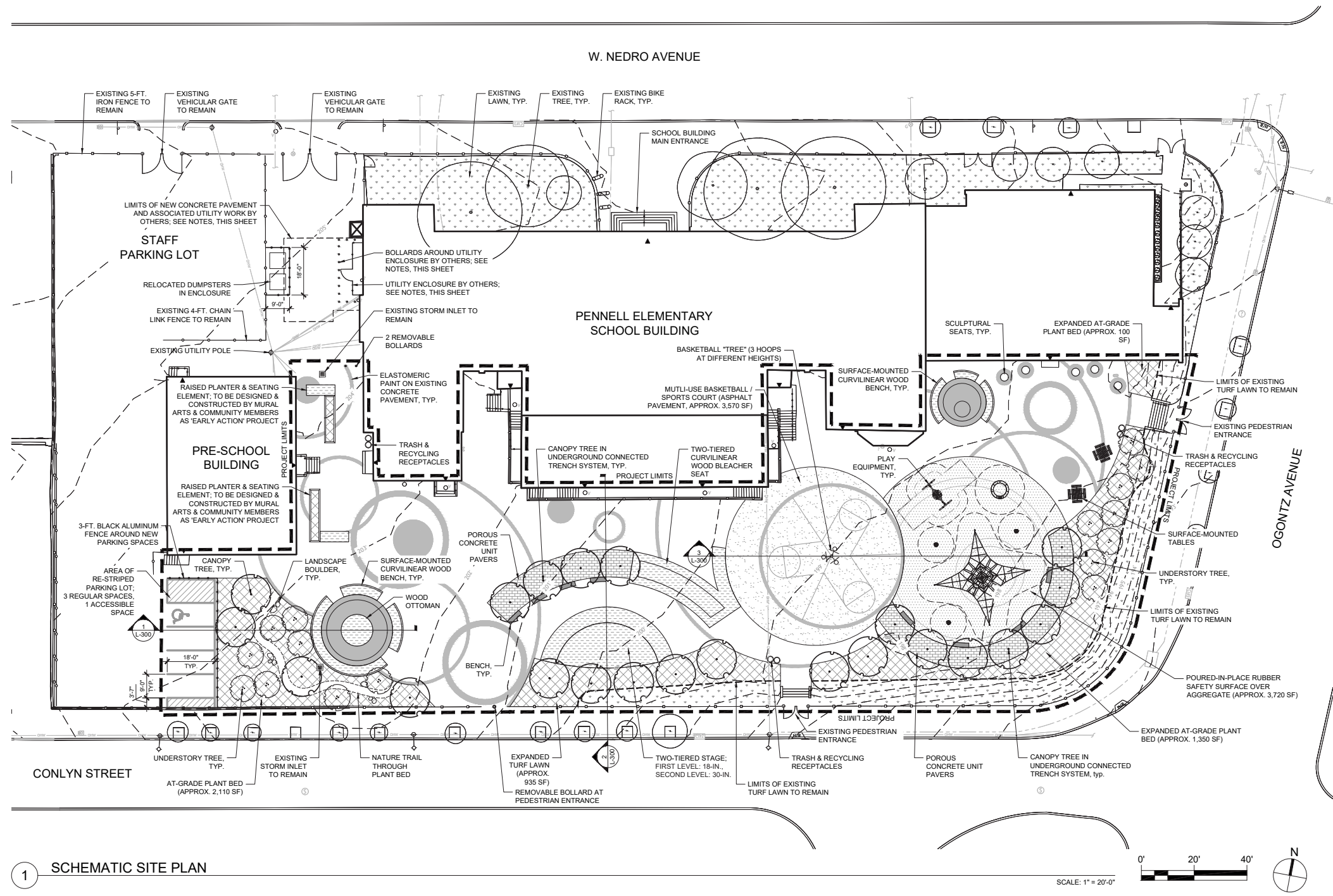
**DRAFT - NOT FOR
 CONSTRUCTION**

SITE PLAN

REV	DATE	DESCRIPTION

SCALE:
 AS NOTED
 DATE: 02/07/2020 DRAWN BY: JM / KR
 SHEET NUMBER: CHECKED BY: SPS

L-100



LEGEND:

PROJECT LIMITS	PROPOSED WOOD FURNISHING ELEMENT
PROPOSED ASPHALT PAVEMENT	PROPOSED BENCH
PROPOSED POURED-IN-PLACE RUBBER SAFETY SURFACE OVER AGGREGATE (POROUS SYSTEM)	PROPOSED TRASH & RECYCLING RECEPTACLES
PROPOSED POROUS CONCRETE UNIT PAVERS	PROPOSED FIXED PEDESTAL TABLE
PROPOSED PAVEMENT PAINT	PROPOSED REMOVABLE BOLLARD
PROPOSED PLANT BED	PROPOSED ALUMINUM FENCE
EXISTING LAWN	PROPOSED CANOPY TREE
PROPOSED LANDSCAPE BOULDERS	PROPOSED UNDERSTORY TREE
	EXISTING TREE

- GENERAL NOTES:**
- SITE SURVEY DATA WAS PROVIDED BY RODRIGUEZ CONSULTING, LLC TO SALT DESIGN STUDIO ON JANUARY 14, 2020.
 - UTILITY & PAVEMENT RENOVATIONS DEPICTED AT WEST SIDE OF PENNELL SCHOOL MAIN BUILDING DONE BY OTHERS. ELEMENTS SHOWN ON PLAN ARE APPROXIMATE AND HAVE NOT YET BEEN CONSTRUCTED. CONSTRUCTION TO BE COMPLETE PRIOR TO INSTALLATION OF WORK ASSOCIATED WITH SCHOOLYARD RENOVATIONS.
 - RAISED PLANT BEDS AND SEATING ELEMENTS AT EAST SIDE OF PRE-SCHOOL BUILDING ARE TO BE DESIGNED AND CONSTRUCTION BY MURAL ARTS PROGRAM RESTORED SPACES INITIATIVE IN COLLABORATION WITH COMMUNITY MEMBERS. EXACT MATERIALS, DIMENSIONS, AND LOCATIONS WILL BE SPECIFIED BY MURAL ARTS DURING DD-CD PHASES.
 - UNLESS OTHERWISE NOTED, EXISTING CONCRETE PAVEMENT TO REMAIN.
 - EXACT MATERIALS, FURNISHINGS, AND PLAY EQUIPMENT TO BE SPECIFIED DURING DD-CD PHASES.
 - ALL WOOD FURNISHING ELEMENTS ARE EXPECTED TO BE SURFACE-MOUNTED AND WILL NOT REQUIRE FULL-DEPTH EXCAVATION FOR INSTALLATION.
 - PLANT MATERIAL, SPECIES, AND EXACT QUANTITIES TO BE SPECIFIED DURING DD-CD PHASES.
 - CURRENT PLAN ESTIMATES APPROXIMATELY 13,230 SF OF DISTURBANCE.

1 SCHEMATIC SITE PLAN

Note: Drawing for this Submission is Not To Scale, Actual Drawing Size is 24" x 36"

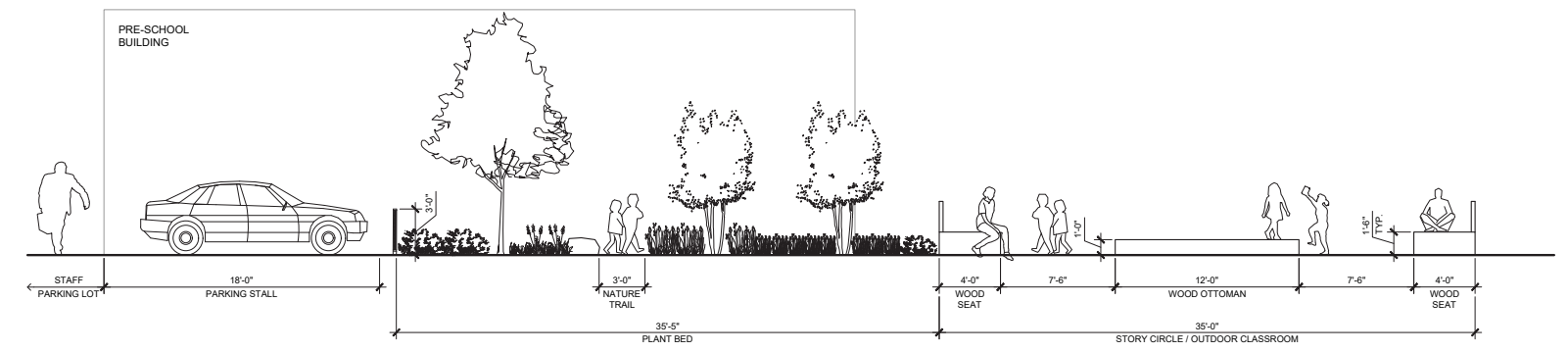
**DRAFT - NOT FOR
 CONSTRUCTION**

**SITE
 SECTIONS**

REV	DATE	DESCRIPTION

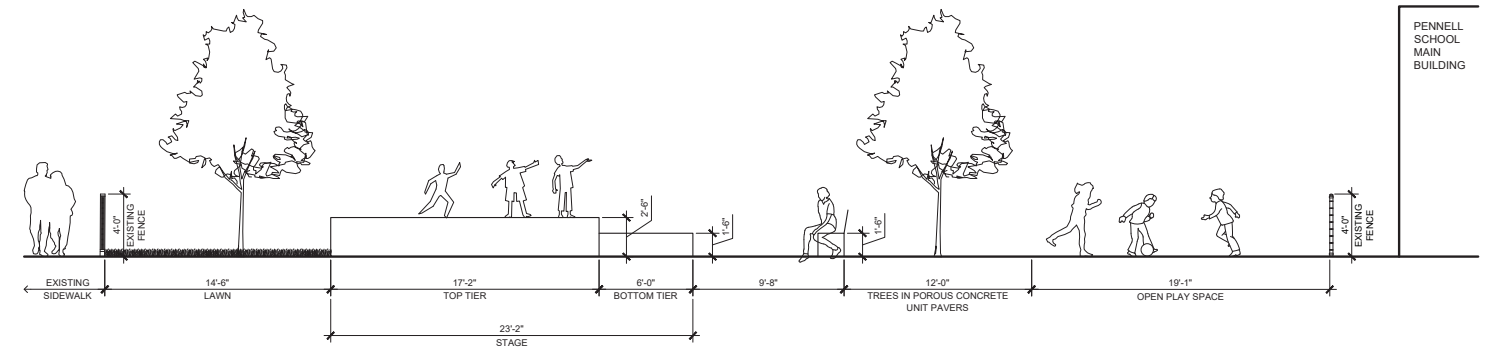
SCALE:
 AS NOTED
 DATE: 02/07/2020 DRAWN BY: JM / KR
 CHECKED BY: SPS

L-300



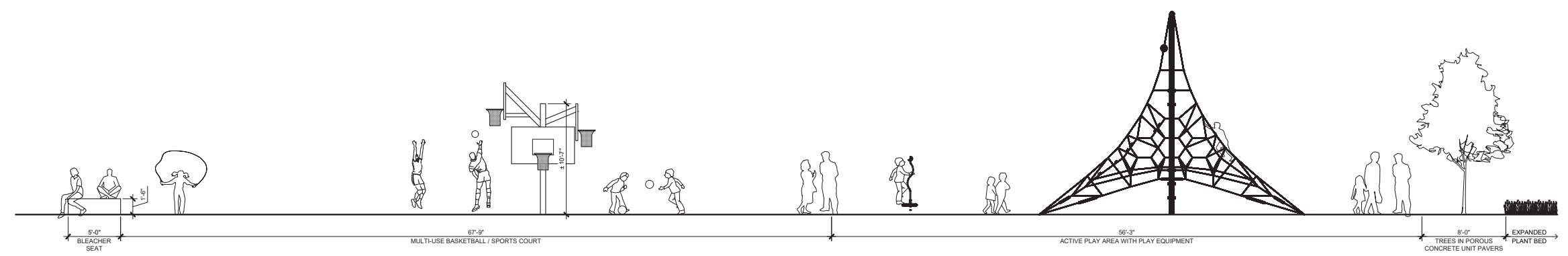
1 STAFF PARKING LOT & STORY CIRCLE

SCALE: 3/16" = 1'-0"



2 PERFORMANCE CIRCLE

SCALE: 3/16" = 1'-0"



3 SPORTS CIRCLE & ACTIVE PLAY CIRCLE

SCALE: 3/16" = 1'-0"

PROJECT BUDGET

PROJECTED CONSTRUCTION COSTS

Provided by Becker & Frondorf, project Cost Estimators

Demolition	\$ 52,500
Hardscape	\$ 157,310
Play Equipment	\$ 77,340
Site Accessories	\$ 118,600
Landscaping	\$ 95,800
Site Utilities	\$ 17,630
Subtotal	\$ 519,180
General Conditions / OH&P (20%)	\$ 103,820
Bond (2%)	\$ 12,000
Contingency (15%)	\$ 95,000
Escalation (4% per year)	\$ 29,000
<hr/>	
Total	\$ 759,000

FUNDING SOURCES

William Penn Foundation	\$ 801,501
Mural Arts Program (approximate)*	\$ 45,000

**Note: Mural Arts Program Funding will cover 'Early Action Project' items and new murals on Pennell School Building. These items are not included in Becker & Frondorf Projected Construction Costs list above.*