

NOMINATION OF HISTORIC BUILDING, STRUCTURE, SITE, OR OBJECT
PHILADELPHIA REGISTER OF HISTORIC PLACES
PHILADELPHIA HISTORICAL COMMISSION

SUBMIT ALL ATTACHED MATERIALS ON PAPER AND IN ELECTRONIC FORM (CD, EMAIL, FLASH DRIVE)
ELECTRONIC FILES MUST BE WORD OR WORD COMPATIBLE

1. ADDRESS OF HISTORIC RESOURCE *(must comply with an Office of Property Assessment address)*

Street address: 4017-21 Chestnut Street

Postal code: 19104

2. NAME OF HISTORIC RESOURCE

Historic Name: New Tabernacle Baptist Church

Current/Common Name: Christ Community Church of Philadelphia

3. TYPE OF HISTORIC RESOURCE

☒ Building

☐ Structure

☐ Site

☐ Object

4. PROPERTY INFORMATION

Condition: ☐ excellent ☒ good ☐ fair ☐ poor ☐ ruins

Occupancy: ☒ occupied ☐ vacant ☐ under construction ☐ unknown

Current use: Religious/Church

5. BOUNDARY DESCRIPTION

See attached.

6. DESCRIPTION

See attached.

7. SIGNIFICANCE

Please attach a narrative Statement of Significance citing the Criteria for Designation the resource satisfies.

Period of Significance (from year to year): from 1896 to 2004

Date(s) of construction and/or alteration: 1896-7

Architect, engineer, and/or designer: Frank R. Watson, architect

Builder, contractor, and/or artisan: George W. Stewart, contractor

Original owner: Berean Baptist Church, New Tabernacle Baptist Church, Chestnut Street Baptist Church

Other significant persons: Rev. George E. Rees

CRITERIA FOR DESIGNATION:

The historic resource satisfies the following criteria for designation (check all that apply):

- ☒ (a) Has significant character, interest or value as part of the development, heritage or cultural characteristics of the City, Commonwealth or Nation or is associated with the life of a person significant in the past; or,
☐ (b) Is associated with an event of importance to the history of the City, Commonwealth or Nation; or,
☐ (c) Reflects the environment in an era characterized by a distinctive architectural style; or,
☒ (d) Embodies distinguishing characteristics of an architectural style or engineering specimen; or,
☒ (e) Is the work of a designer, architect, landscape architect or designer, or engineer whose work has significantly influenced the historical, architectural, economic, social, or cultural development of the City, Commonwealth or Nation; or,
☐ (f) Contains elements of design, detail, materials or craftsmanship which represent a significant innovation; or,
☐ (g) Is part of or related to a square, park or other distinctive area which should be preserved according to an historic, cultural or architectural motif; or,
☒ (h) Owing to its unique location or singular physical characteristic, represents an established and familiar visual feature of the neighborhood, community or City; or,
☐ (i) Has yielded, or may be likely to yield, information important in pre-history or history; or
☒ (j) Exemplifies the cultural, political, economic, social or historical heritage of the community.

8. MAJOR BIBLIOGRAPHICAL REFERENCES

See attached.

9. NOMINATOR

Organization University City Historical Society Date 20 October 2019

Name with Title Arielle Harris, architectural historian Email info@uchs.net

Street Address P. O. Box 31927 Telephone _____

City, State, and Postal Code Philadelphia, PA 19104

Nominator ☐ is ☒ is not the property owner.

PHC USE ONLY

Date of Receipt: 21 October 2019

☒ Correct-Complete ☐ Incorrect-Incomplete Date: 4 November 2019

Date of Notice Issuance: 5 November 2019

Property Owner at Time of Notice:

Name: West Park Church of Deliverance Association Inc

Address: P.O. Box 42775

City: Philadelphia State: PA Postal Code: 19101

Date(s) Reviewed by the Committee on Historic Designation: _____

Date(s) Reviewed by the Historical Commission: _____

Date of Final Action: _____

☐ Designated ☐ Rejected

5. BOUNDARY DESCRIPTION



Figure 1. Aerial image of 4017-21 Chestnut Street; while one parcel, each “piece of ground” indicated in the deed is delineated separately on Philadelphia’s Atlas interface. [atlas.phila.gov]

ALL THAT CERTAIN lot or piece of ground with the Church edifice or meeting house thereon erected, SITUATE on the North side of Chestnut Street at the distance of 240 feet Westward from the West side of 40th Street in the 27th Ward of the City of Philadelphia.

CONTAINING in front or breadth on the said Chestnut Street 60 feet and extending of that width in length or depth Northwardly at right angles with the said Chestnut Street 133 feet 6 inches, bounded on the North and East by ground hereinafter described and conveyed on the South by the said Chestnut Street and on the West by lot marked No. 7 in the plan of Hamilton Village lots.

ALSO ALL THAT CERTAIN lot or piece of ground situate on the North side of Chestnut Street West of 40th Street in the said Ward and City adjoining the above mentioned lot and said Church Edifice on the East 40 feet front on Chestnut Street and in length or depth Northward 130 feet more or less to the premises next hereinafter described together with the stone messuage or dwelling house thereon erected.

BEING known as 4017-21 Chestnut Street

BEING the same premises which The Chestnut Street Baptist Church of Philadelphia, a Pennsylvania Non-Profit Corporation by Deed dated 5/4/2004 and recorded 5/27/2004 in Philadelphia County as Document No. 50936033 conveyed unto West Park Church of Deliverance Association, in fee.¹

¹ City of Philadelphia, Department of Records. Document No. 52961954. 3 September 2015. PhilaDOX: <http://pdx-app01/recorder/eagleweb/docSearch.jsp>. Accessed 4 November 2019.

6. PHYSICAL DESCRIPTION

Christ Community Church, historically known as New Tabernacle Baptist Church, is situated on the north side of Chestnut Street between 40th and 41st Streets in the University City neighborhood of West Philadelphia. It is located one-and-a-half blocks southwest of the Market-Frankford Line. Chestnut Street is an eastbound thoroughfare running three-and-a-half miles long in West Philadelphia, from Cobbs Creek Park to the Schuylkill River, and continues across the Chestnut Street bridge for approximately two miles to the Delaware River.



Figure 2. Oblique aerial image of 4017-21 Chestnut Street, currently in use as Christ Community Church. [Pictometry, 2018]

Surrounding buildings in the area include late nineteenth-century attached and semi-detached rowhouses, early twentieth century apartment buildings, nineteenth-century churches, and twentieth-century commercial and civic structures. Its proximity to the University of Pennsylvania is not to be understated. While 4017-21 Chestnut Street is on the western fringe of campus, Penn owns several properties along 40th and Chestnut Streets, many students live in off-campus housing in the neighborhood, and the campus is within walking distance.



Figure 3. Map of the University of Pennsylvania campus. The location of New Tabernacle Baptist Church is indicated by the red star. [Penn Facilities & Real Estate]

The National Register of Historic Places nomination for the West Philadelphia Streetcar Suburb Historic District includes this building as a contributing resource. Its inventory describes 4017-21 Chestnut Street as follows (emphasis added):

Massive, elaborately ornamented Gothic Revival church with a strong urban character. The wide gable-roofed sanctuary is framed by three arched entranceways framed by triple colonettes. The walls are treated with rock-faced gneiss with limestone trim, large central pointed-arch window with stained glass; the roof is sheathed with slate, and the walls of the transepts visible from the street are capped with a corbel table motif in stamped copper. The large, impressive sanctuary interior is intact and features elaborate plaster ceiling ornament and carved oak furnishings. **An outstanding example of its style.**²

Cruciform in plan, New Tabernacle Baptist Church occupies the majority of its approximately 60' x 130' lot. The primary elevation of New Tabernacle Baptist Church faces south onto Chestnut Street. It is defined by a large gable flanked by two, 87-foot tall octagonal towers. The towers were originally capped with turrets, but these had been removed by the early 1960s. A set of full-width curved steps, flanked by stone bannisters, leads to the entry. Atop each bannister is an ornamental cast-iron lightpost. A tripartite Indiana limestone portal with gabled openings contain pointed-arch archivolts over carved wooden doors and tympanums. The archivolts are supported by pink marble colonettes with foliated capitals; the central opening has three per side while the two flanking openings have two per side. The three openings are divided by half-height limestone façade buttresses, and full-height stone façade buttresses extend above the left and right openings. The gable over the middle opening is lined with crockets and the majority of

² National Register of Historic Places, West Philadelphia Streetcar Suburb Historic District, Philadelphia, Pennsylvania, National Register #97001669.

gabled and arched features (arches, buttresses) are topped with foliated finials. The gable contains a large pointed arch stained glass window recessed in a limestone archivolt and foliated capitals.

The gable contains a large pointed arch stained glass window recessed in a limestone archivolt supported by foliated columns. The leaded stained glass is supported by tracery in circular and trefoil, quatrefoil, teardrop, and other curved patterns. Above the stained glass tracery is a corbel course and triple lancet stained glass window.



Figure 4. South (principal) elevation of New Tabernacle Baptist Church, now in use as Christ Community Church [Arielle Harris, September 2019]

The towers are divided into four sections by string and corbel courses. The bottom two sections contain staggered lancet windows and the top two sections contain lanceted and pointed-arch windows with tracery on all eight sides of the octagon. The top two sections also contain more elaborate corbeling, columns, and cornice stone work.



Figure 5. Detail of cornerstone at eastern tower. [Arielle Harris, September 2019]



Figure 6 Detail of west stair rail and ornamental lightpost [Arielle Harris, September 2019]



Figure 7. Detail of central door at south elevation. [Arielle Harris, September 2019]

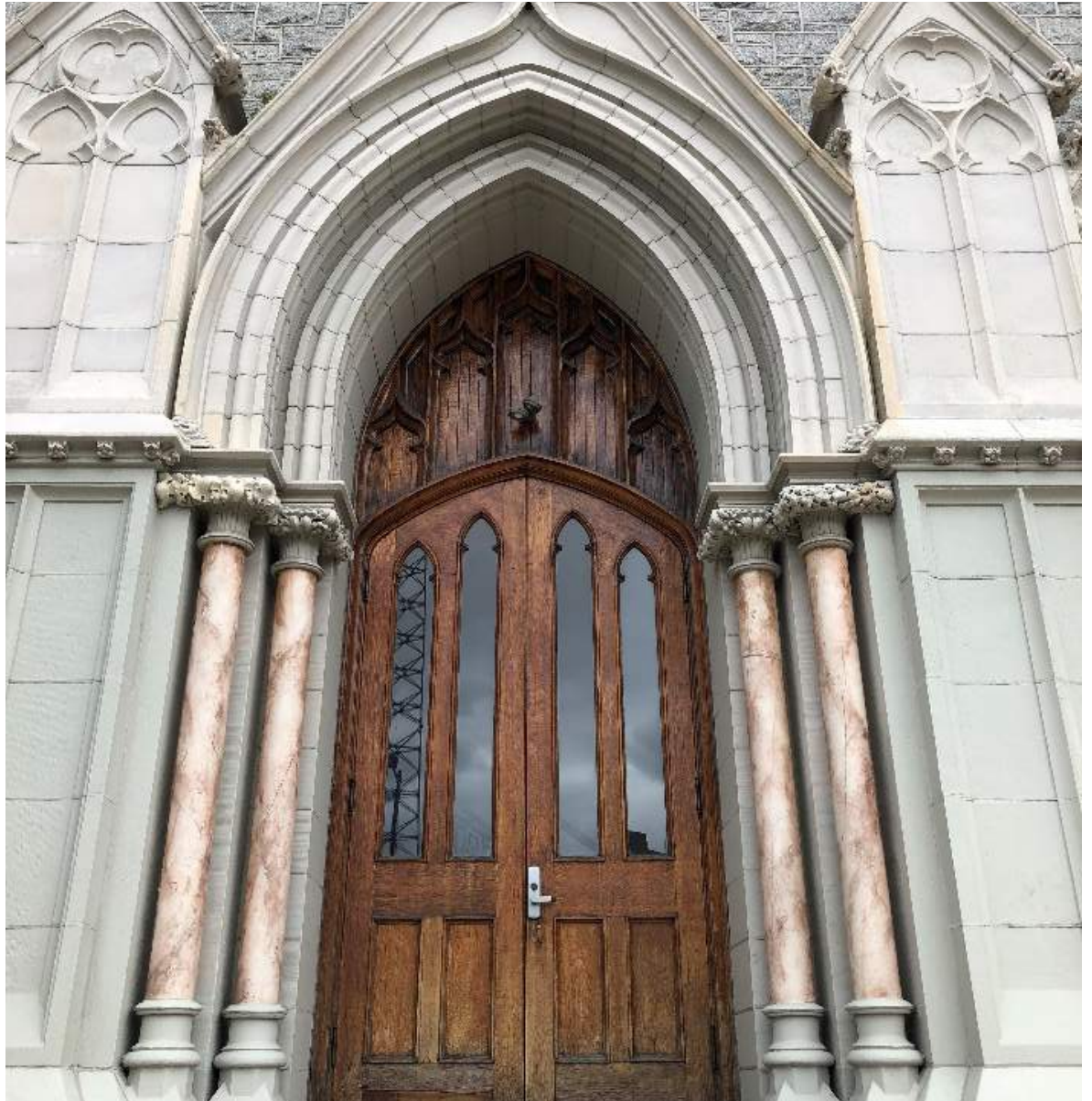


Figure 8. Detail of secondary door and columns at south elevation. [Arielle Harris, September 2019]

While the east and west elevations are partially obscured at street level due to adjacent buildings, they were accessible via vacant lots to the rear. Extending north from the two towers, these elevations are identical:

A two-story, four bay nave is punctuated by lancet stained glass windows and divided by full-height stone buttresses. A bay window extends from the first story, replacing two lancet windows at the first floor. The transept features three pairs of lancet stained-glass windows at the first story, and an arrangement of three large lancet windows with tracery at the second story depicting the story of Jesus and the Samaritan. The fabricator of the stained glass is unknown, having not been reported in neither the *Philadelphia Real Estate Record and Builder's Guide* nor the architect's specifications or any local newspapers. The transept is capped with a lanceted corbel table.



Figure 9. Oblique view of west elevation, looking southeast [Arielle Harris, September 2019]



Figure 10. Detail of stained glass windows at east transept. The middle lancet depicts the story of Jesus and the Samaritan and angels in the left and right lancets. The west transept contains identical stained glass. [Arielle Harris, September 2019]

Past the transept, in what would translate as the chancel in a Catholic church, originally housed parts of the baptistry and organ within the auditorium, and partially contained classrooms and meeting rooms. On the east and west elevations, this is clad in stone and unfenestrated.

At the north elevation, these wings feature quoining and pairs of lanceted stained glass windows; at the basement level these have been filled with glass block. The north elevation is otherwise defined by a brick gable and one story rounded projection. A chimney extends out of the gable on the west side. The gable contains a single oculus window. From an oblique aerial view of the property, a pinnacle extends above the intersection of the transept and the nave.



Figure 11. North elevation. [Arielle Harris, September 2019]



Figure 12. Oblique view looking south at New Tabernacle Baptist Church, providing a clearer view of the north elevation. [Pictometry]

7. STATEMENT OF SIGNIFICANCE

The former New Tabernacle Baptist Church, currently known as Christ Community Church of Philadelphia, is historically significant and merits designation under Criteria for Designation (a), (d), (e), (h), and (j), pursuant to Section 14-1004(1) of the Philadelphia Code. It is already a contributing structure to the West Philadelphia Streetcar Suburb Historic District, which was added to the National Register of Historic Places in 1997.

(a): Has significant character, interest or value as part of the development, heritage or cultural characteristics of the City, Commonwealth or Nation or is associated with the life of a person significant in the past;

(j): Exemplifies the cultural, political, economic, social or historical heritage of the community.

The New Tabernacle Baptist Church exemplifies the cultural, political, economic, social or historical heritage of the West Philadelphia Baptist community, as well as the power dynamics of Baptist congregations in late nineteenth-early twentieth century Philadelphia. The site on which 4017-21 Chestnut Street sits was the former location of Berean Baptist Church, constructed in 1859-1860. In the late nineteenth century, Berean Baptist Church consolidated with Tabernacle Baptist Church, a congregation located in Rittenhouse Square. Tabernacle Baptist Church had a tumultuous 47-year history, stemming from inconsistent leadership, debt, fluctuating membership, and what was at the time believed to be an undesirable location at 18th and Chestnut Streets. By the early 1890s, Tabernacle Baptist Church was in discussions with First Baptist Church and Eden Baptist Church, both located nearby, to consolidate their congregations.

On the other hand, Berean Baptist Church had been growing consistently since its founding in then-semi-rural West Philadelphia. Baptist activity grew in West Philadelphia to some degree due to the influence of Berean, with members creating missions and additional churches as well as merging with other West Philadelphia Baptist congregations. When Berean Baptist Church called upon Rev. George E. Rees, then pastor at Tabernacle Baptist Church, to lead their church, Rees appeared to jump at the opportunity to merge the two congregations, disregarding the prior arrangements with First Baptist Church and Eden Baptist Church. Tabernacle and Berean agreed that the Tabernacle church building would be sold and a new church would be erected on the Berean parcel. Perhaps Rev. Rees also saw it as a strategic move to relocate the consolidated church to a more fashionable location due to West Philadelphia's status as an emergent streetcar suburb and enclave for the middle class and nouveau riche. In 1910, New Tabernacle Baptist Church consolidated with Epiphany Baptist Church (formerly known as the First Baptist Church of West Philadelphia); the merged congregation, renamed the Chestnut Street Baptist Church, remained at 4017-21 Chestnut Street until 2005.

History of the Baptists in Philadelphia

Baptists immigrating from Wales and England first settled in the Delaware Valley in the late seventeenth century. The oldest Baptist Church in the region is the Pennepek, or Lower Dublin Baptist Church; organized in January 1687. Pennepek was the mother church of mid-Atlantic congregations founded throughout the eighteenth century, including Philadelphia's First Baptist Church.³ This congregation first

³ Horatio Gates Jones, "Historical Sketch of the Lower Dublin (Or Pennepek) Baptist Church," Philadelphia: 1869, Web, <http://baptisthistoryhomepage.com/penn.pennepek.lower.dublin.history.html>

gathered in what was known as the “Barbadoes Lot,” located around Second and Chestnut Street in December 1698. The Philadelphia Baptist Association was founded in 1707 by five congregations “as an annual meeting for mutual support in doctrine and practice.”⁴ This organization aided in the expansion of Baptist congregations around the country and later just Pennsylvania, and contributed to the origins of institutions of higher education including Brown and Temple Universities. First Baptist Church officially separated from Pennepek in 1746.⁵

In 1762, the Philadelphia Baptist Association contained 29 member churches with 1,318 members; by 1776, the organization contained 42 member churches with 3,103 members; by 1812, Pennsylvania alone contained 63 churches and 4,365 members. Between 1790 and 1890, the number of Baptists in the United States grew from approximately 65,000 to over 3,700,000 – which, according to the *American Church History Series*, is population growth four times larger than the rate of growth for the United States as a whole.⁶

These early Baptist congregations did not grant African-Americans – whether enslaved or free – the same rights and responsibilities as white congregants. As a result, thirteen African-American congregants of First Baptist Church formed the First African Baptist Church in 1809, and this church was welcomed as a member of the Philadelphia Baptist Association that year.⁷ Monumental Baptist Church, the second oldest African-American Baptist congregation in the city and the first in West Philadelphia, was founded in 1826. In 1829, the congregation settled at 41st and Oak (now Ludlow) Streets; their 1882 edifice was added to the Philadelphia Register of Historic Places in 2016.⁸

Philadelphia was a hub of Baptist activity through the nineteenth century, being home to a number of national Baptist organizations and hosting a number of Baptist conventions and meetings. These organizations and meetings included the American Baptist Historical Society, Triennial Conventions, the American Baptist Publication Society, and the National Baptist Education Convention. Furthermore, Baptists organized a number of philanthropic institutions throughout Philadelphia, including hospitals, orphanages, and retirement homes.⁹

The *Encyclopedia of Christianity in the United States* argues that in the early nineteenth century, “Baptists were continually torn between the popular tendency to centralize, and the inherent instinct to retain power in the local church by avoiding ecclesiastical hierarchies.”¹⁰ The history of New Tabernacle Baptist Church, which follows below, exemplifies this argument, having been formed from a union of two Baptist congregations.

⁴ Gerald L. Priest, “The Philadelphia Baptist Association and the Question of Authority,” *Detroit Baptist Seminary Journal*, Vol 12. Issue 1, (Fall 2007), 51.

⁵ A. H. Newman, D.D., L.L.D., *The American Church History Series, Volume II: A History of Baptist Churches in the United States* (New York: The Christian Literature Company, 1894), 208.

⁶ A. H. Newman, D.D., L.L.D., *The American Church History Series, Volume II: A History of Baptist Churches in the United States* (New York: The Christian Literature Company, 1894), 504.

⁷ Oscar Beisert, “Nomination to the Philadelphia Register of Historic Places: First African Baptist Church,” 2016.

⁸ Oscar Beisert, “Nomination to the Philadelphia Register of Historic Places: First African Baptist Church,” 2016.

⁹ <http://philadelphiabaptist.org/history/>

¹⁰ “American Baptist Churches in the U.S.A.,” *Encyclopedia of Christianity in the United States, Volume 5*, 61

History of New Tabernacle Baptist Church

New Tabernacle Baptist Church was formed through the merging of two congregations: Tabernacle Baptist Church, located in the Rittenhouse Square neighborhood, and Berean Baptist Church, located at 40th and Chestnut Streets in West Philadelphia. The story of their consolidation, and the histories of the Tabernacle and Berean churches, are highlighted in the congregation's 1897 *Membership Directory of New Tabernacle Baptist Church* (Membership Directory), printed the same year consolidation took effect. This nomination reveals the Membership Directory to be a subjective primary source that embellishes and/or omits parts of the story of New Tabernacle Baptist Church altogether, based on reporting in the *Philadelphia Inquirer* and other news outlets.

*Tabernacle Baptist Church*¹¹

The history of Tabernacle Baptist Church is outlined in the inaugural Membership Directory for the New Tabernacle Baptist Church. Its story prior to consolidation with Berean Baptist Church is one of ups and downs, with inconsistent leadership and unruly financial affairs of the congregation contributing to the overall decline in morale and membership of the congregation.

Tabernacle Baptist Church was founded on February 14, 1848 as the first Baptist congregation west of Broad Street. The congregation initially met in a Methodist meetinghouse on 17th and Chestnut Streets, first renting space and eventually purchasing the building altogether. The first pastor was Rev. Charles Tucker, of Jersey Shore, Pa., who served from April 1849 until his death in 1851.

Under the five-year leadership of the following pastor, Rev. Minor G. Clark, D. D., of Springfield, Mass, a lot was purchased at 18th and Chestnut Street, where their church, designed by William W. Boyington, was built.¹² While the congregation grew from 96 to 316, a handsome debt of \$36,000 was accrued during the construction of the church; only \$10,000 of this debt was paid off when Rev. Clark left Tabernacle Baptist Church in 1856.

¹¹ Unless otherwise cited, this section is paraphrased from the *Membership Directory of the New Tabernacle Baptist Church: Together with the Histories of the Tabernacle and Berean Churches Prior to Consolidation* (Philadelphia: Avil Printing Company, 1897), pages 3-7.

¹² *Philadelphia Architects and Buildings Database*, Tabernacle Baptist Church.

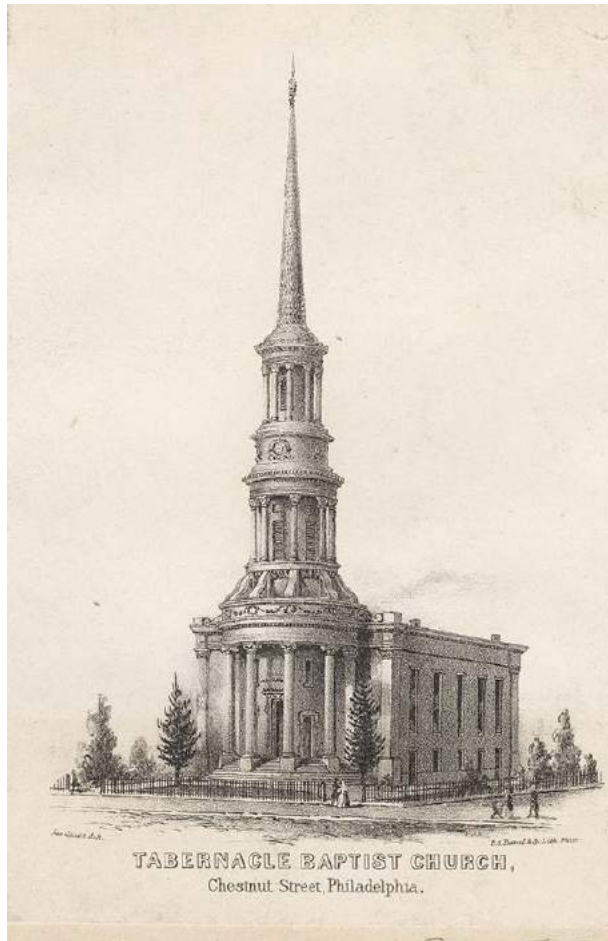


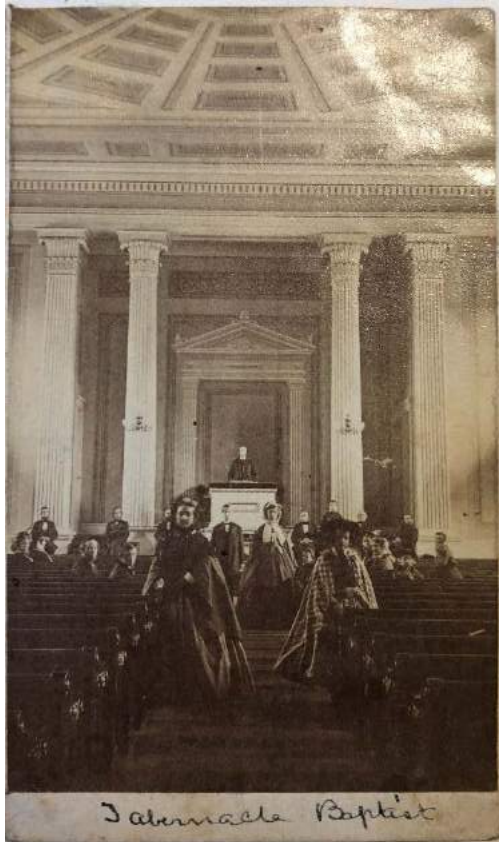
Figure 13 (left). Tabernacle Baptist Church, Chestnut Street. [Free Library of Philadelphia Digital Collections] The Free Library caption reads "View showing the church built 1853 after the designs of William Boyington on the 1800 block of Chestnut Street. Church contains a tower and spire. A few pedestrians walk on the sidewalk in front of the building that is surrounded by a wrought iron fence. Trees adorn the church grounds. The church, razed in 1900, was the only Baptist church situated west of Broad Street when completed."

Figure 14 (right): ca. 1854 print showing drawing of New Tabernacle Baptist Church [Jane Campbell Collection, Historical Society of Pennsylvania]



While the church "increased rapidly in numbers and in power, and \$12,000 was raised towards the payment of the debt" under the five-year tenure of Rev. William T. Brantly, he "abruptly resigned" in September 1861. The Civil War years saw two pastors, and a sharp decrease in membership and morale.

Under the tenure of Rev. D. C. Eddy, D. D., an organ was installed in the church, further adding to the debt. Under the leadership of Rev. George A. Peltz, D. D., of New York, from 1865-1871, "All departments of church work received a new impulse, the school increased in numbers and efficiency, the Young People's Association was strengthened and many converts were added to the church." Most importantly, the remaining \$15,000 in debt was paid off in full. Rev. Peltz resigned in 1871 to focus on Sunday school work, leaving Tabernacle Baptist Church without a pastor for a year-and-a-half.



*Figure 15 (left): Interior of Tabernacle Baptist Church, likely from the Rev. Eddy era. [Jane Campbell Scrapbook Collection, Historical Society of Pennsylvania]
Figure 16 (right): Interior of Tabernacle Baptist Church after the organ was installed [Membership Directory of New Tabernacle Baptist Church]*

From 1872 until the consolidation of Tabernacle Baptist Church, Rev. George E. Rees, of Wales, served as pastor of the congregation. Under Rees' tenure, a chapel was built on a donated parcel on Lee Street, and improvements were made to the Chestnut Street church. The Membership Directory spares no language in highlighting that these improvements were paid off expeditiously. The Directory further recalls that "the church grew in power and numbers" under Rees' leadership; however, this is a highly suspect claim as later on they note that a "goodly number of our members" left to form a Pilgrim church at 23rd and Christian Streets.



Figure 17. Photograph of Rev. George E. Rees, D.D. [*Membership Directory of New Tabernacle Baptist Church*]

*Berean Baptist Church*¹³

Berean Baptist Church was founded in 1858 by a group interested in forming a new congregation from the First Baptist Church of West Philadelphia. The First Baptist Church of West Philadelphia was organized in the early 1840s by William Williams Keen, and others; Rev. Edgar M. Levy served as pastor.¹⁴ In early 1859, the first baptisms of the new congregation, since named Berean Baptist Church, were performed in Allibone's Woods, a section of land bounded by 42nd, 43rd, Locust, and Pine Streets.

¹³ Unless otherwise cited, this section is paraphrased from the *Membership Directory of the New Tabernacle Baptist Church: Together with the Histories of the Tabernacle and Berean Churches Prior to Consolidation*, Philadelphia: Avil Printing Company, 1897, pages 7-11.

¹⁴ William Cathcart, D. D., ed., *The Baptist Encyclopedia*, Vol. 2 (Philadelphia: Louis H. Everts, 1883), 641, 689.



Figure 18. Allibone's Woods, depicted by the red outline, as seen in R. L. Bines' *Map of the Consolidated City of Philadelphia*, 1855. Source: Greater Philadelphia Geohistory Network.

By the mid-nineteenth century, West Philadelphia was beginning its transformation from a wealthy, rural country retreat “without municipal control”, to a middle-class streetcar suburb; by 1851, its population had reached 11,000.¹⁵ The following map from 1849, five years prior to Philadelphia’s consolidation, shows the increasing density of the pink shaded area east of 41st Street, then known as Hamiltonville, compared to the remainder of West Philadelphia. The Woodlands Cemetery and Blockley Almshouse are visible on the southeast edge, and the Pennsylvania Hospital Building is to the northwest.

¹⁵ National Register of Historic Places, West Philadelphia Streetcar Suburb Historic District, Philadelphia, Pennsylvania, National Register #97001669.

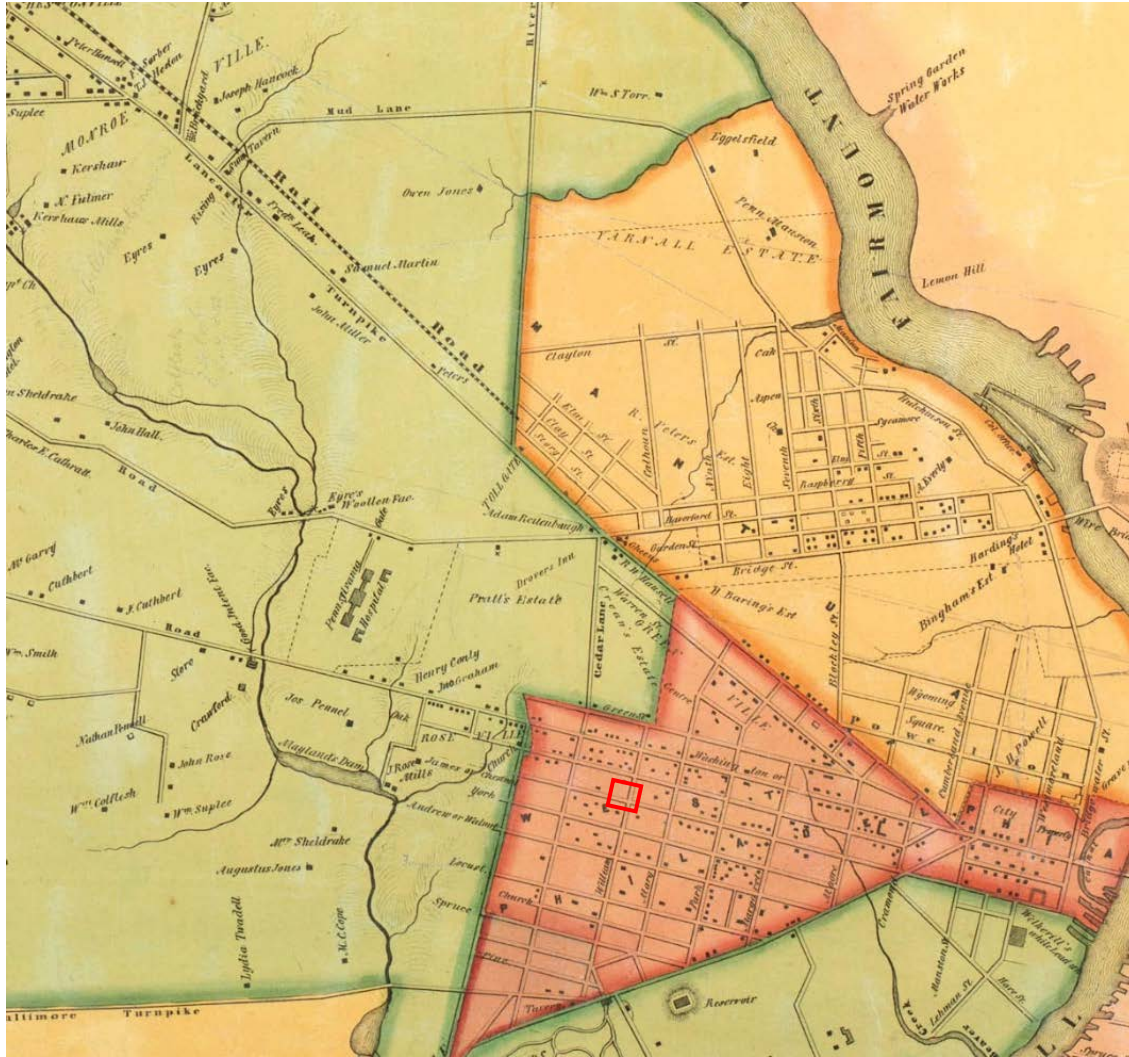


Figure 19. Portion of Map of Blockley Township, by Rea and Miller, 1849. The location of Berean Baptist Church, and later New Tabernacle Baptist Church, is still undeveloped land at this point, although development is encroaching on all sides approaching the parcel on Chestnut Street.

Shortly after this map was published, Hamilton Terrace, the Hamilton Family Estate, and Woodland Terrace were developed.¹⁶ These three enclaves are among the earliest examples of residential speculation in West Philadelphia, intended for an upper-class clientele. The pioneering congregations to settle in West Philadelphia around this time, including Roman Catholic, Quaker, Episcopal, and Presbyterian denominations meetinghouses, would have catered to – or been started by – residents of these early developments.

Berean Baptist Church, and by default New Tabernacle Baptist Church, would not have been located at its Chestnut Street location if not for the generosity of Captain John P. Levy, brother of Rev. Edgar Levy.¹⁷

¹⁶ National Register of Historic Places, West Philadelphia Streetcar Suburb Historic District, Philadelphia, Pennsylvania, National Register #97001669.

¹⁷ Captain John Levy's house was located at 40th and Pine Streets and was listed in the Philadelphia Register of Historic Places in 1973. However, the University of Pennsylvania, the owner of the property, was granted permission by the Historical Commission to demolish the structure and did so in 2015.

Captain Levy spent his career as a seaman and shipbuilder; he co-founded lucrative ship-building firm Reaney, Neafie & Levy in 1845.¹⁸ Captain Levy, who was baptized by his brother, purchased a lot of land on the 4000 block of Chestnut Street for the purpose of building Berean Baptist Church. Captain Levy personally funded the construction of the church, which opened in 1860, and an adjacent parsonage. Levy's total contributions to the congregation amounted to nearly \$35,000 at the time, and he donated the deed to Berean Baptist Church in October 1863.

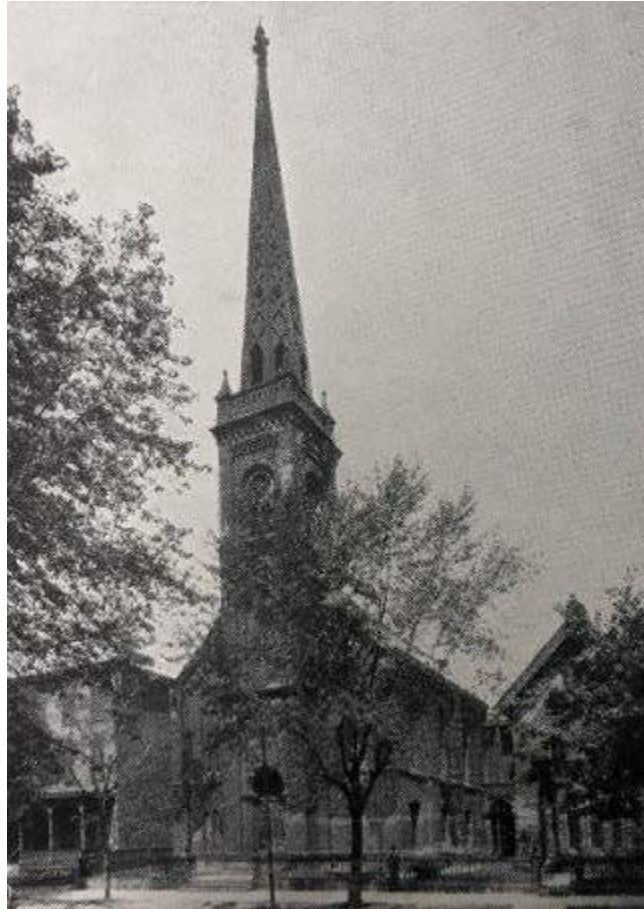


Figure 20. Undated photograph of Berean Baptist Church [Membership Directory of New Tabernacle Baptist Church]

The church was designed in the Romanesque style by a “Mr. D. S. Gendell, architect,” and Reaney, Nefie & Co. provided the cast-iron spire; the spire was reported by the *Public Ledger* as being “a novelty, and will doubtless attract much attention.”¹⁹ The noted architect refers to David S. Gendell, who apprenticed with Thomas Ustick Walter, and then went into practice with his father, a carpenter/builder, at 5th and Chestnut Streets.²⁰

Having only been built four years after Tabernacle Baptist Church, the designs of the two churches provide insight into the architectural taste of Philadelphia's mid-nineteenth century Baptist congregations. While Tabernacle was designed in the Classical Revival style and Berean was in the Romanesque style,

¹⁸ William Cathcart, D. D., ed., *The Baptist Encyclopedia*, Vol. 2 (Philadelphia: Louis H. Everts, 1883), 690;

“Neafie & Leavy, Philadelphia, PA,” shipbuildinghistory.com, Web, September 18, 2019.

¹⁹ *A New Church*, *The Philadelphia Public Ledger*, May 5, 1859, p. 1.

²⁰ Sandra Tatman, “David Smith Gendell (1839-1925),” *Philadelphia Architects and Buildings Database*.

they both featured central towers with massive spires that provide a dramatic focal point; Berean boasted a 160 foot tower and spire while Tabernacle boasted a 212 foot tall steeple.²¹ Similarly, First Baptist Church, West Philadelphia, whose edifice on 36th and Chestnut Streets was constructed from 1860-1863, was designed by Samuel Sloan in the Norman style and featured a gabled front and adjacent 170-foot tower.²² Interestingly, the Berean Baptist Church building is labeled in the 1862 Samuel Smedley *Atlas of the City of Philadelphia*, while First Baptist Church West Philadelphia and Monumental Baptist Church are not, despite their building footprints being present on the map and these congregations being older than Berean Baptist Church.²³ Taking into account that African-American institutions were likely omitted from such documents, it perhaps reveals the degree of prominence of Berean Baptist Church in comparison to First Baptist Church, West Philadelphia.

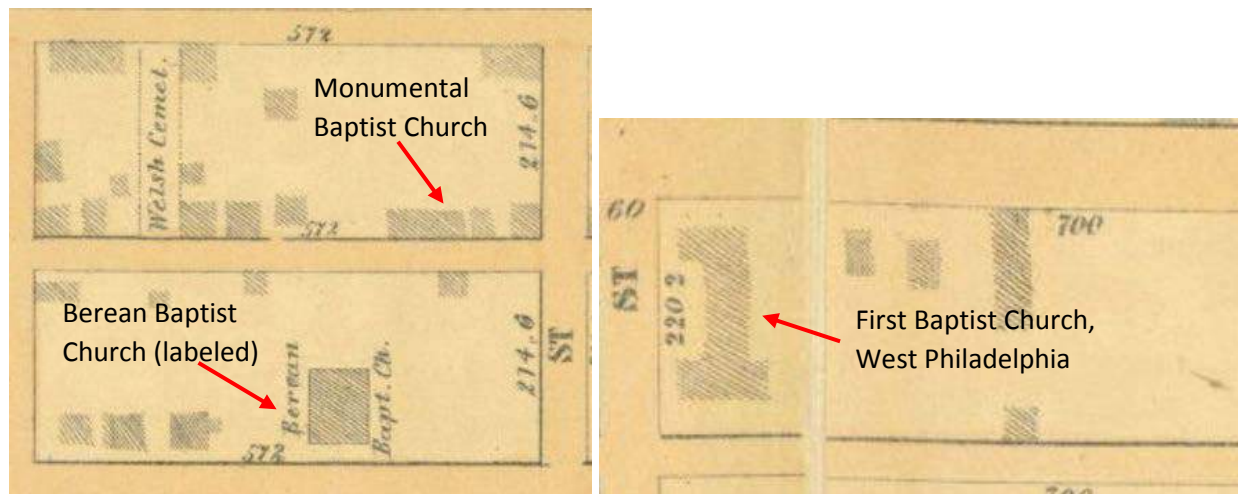


Figure 21. Extracts from 1862 Smedley Atlas of Philadelphia showing unlabeled locations of Monumental Baptist Church and First Baptist Church, West Philadelphia, and labeled location of Berean Baptist Church, a comparatively younger congregation at the time. [Greater Philadelphia Geohistory Network]

Rev. Edgar Levy served as pastor of Berean Baptist Church from 1868-1884. During this time, Baptist activity expanded in West Philadelphia with the founding of the Mantua Baptist Church by former Berean congregants. In 1890, Powelton Avenue Church merged with the Berean congregation. According to newspaper reports, Berean would only accept the consolidation if Powelton were to join Berean, and not vice-versa.²⁴ When the Powelton church met to discuss the merger, the Philadelphia Times noted that Berean “has a small congregation, but a handsome building, free of debt.”²⁵

Consolidation, but with whom?

In 1893, discussions began regarding the consolidation of Tabernacle Baptist Church with the First Baptist Church, by this time located at Broad and Arch Streets, and with Beth Eden Baptist Church, at Broad and Spruce Streets. This dialogue was not uncommon among the Baptist community at the time.

²¹ J. Thomas Scharf and Thompson Westcott, *History of Philadelphia, 1609-1884*, Vol. 3 (Philadelphia: L. H. Everts & Co., 1884), 1752.

²² “New Church in West Philadelphia,” *The Philadelphia Public Ledger*, June 12, 1860, 1; “First Baptist Church, West Philadelphia,” *The Philadelphia Inquirer*, April 6, 1863, 8. A lithograph of First Baptist Church, West Philadelphia can be accessed digitally or at the Historical Society of Pennsylvania, call number HSP Bc 13 W 519.

²³ Smedley map

²⁴ “They Favor the Union,” *Philadelphia Times*, February 25, 1890, 3.

²⁵ “Baptist Churches Unite,” *The Philadelphia Times*, March 4, 1890, 1.

Berean Baptist Church was already familiar with such a strategy, having just consolidated with Powelton Baptist Church. And, on April 23, 1893, Rev. Frank M. Goodman of the Spruce Street Baptist Church was recorded as stating in a sermon that “We must use business judgment in management of church affairs. A railroad will not run ‘empties.’ No more should a religious denomination. It would be to the interest of all concerned if in some districts consolidation of churches of the same faith could be effected and a great church be established there instead of having several struggling small ones. Money would be saved instead of wasted and efficiency increased.”²⁶

According to newspaper reports, Tabernacle, First Baptist, and Beth Eden Baptist’s congregations were losing membership for churches located in more desirable areas.²⁷ Furthermore, Beth Eden Baptist Church had suffered a fire in 1881 and was left without a building and a pastor. Beth Eden and First Baptist already had a symbiotic relationship, each hosting the other when their buildings were under renovation (or in the case of Beth Eden, burned). The congregations felt their locations were undesirable and out-of-place in Philadelphia’s emerging central business district. As written in First Baptist Church’s bicentennial history,

“Owing to the fact that both of these churches, as well as the Tabernacle Baptist Church, at Eighteenth and Chestnut Streets, were central in location, all three began to feel the disintegration which always, in time, attacks a central city church. The members move into the suburbs, business encroaches on the resident area around it, and so, by an inexorable law of city development, all three churches were waning from a gradual but steady loss of membership.”²⁸

Nothing else on the consolidation subject was reported until 1894, when meetings among representatives of the three churches were described by the *Philadelphia Inquirer*. In November of that year, *The Philadelphia Times* reported on a meeting attended by 250 parishioners of the three churches. Earlier that year, a joint committee was established, a report created on the state of the congregations, and Articles of Agreement were drafted.²⁹ The committee, which was sharing the results of their findings with the congregations, remarked in their report that “Rev. Dr. Rees, who has been the prime mover, has exhibited the utmost degree of foresight, magnanimity and self-forgetfulness.”³⁰ Confusingly, however, the article reported on a potential “colony,” or new church, led by Rev. Rees, to come out of this consolidation. The article elaborated that a sum of \$100,000 would be given to

“members of the Consolidated Church, not less than 75 in number, who may desire to form a new church...and shall be used only for the erection of buildings and the support of this new Baptist church. This new body shall be a colony from the Consolidated Church. Such a new church seems very desirable from a broad view of the best interests of the denomination at large.”³¹

²⁶ “Are Churches Too Numerous? Rev. Frank M. Goodchild Introduces Another Pertinent Subject,” *The Philadelphia Times*, April 24, 1893, 3.

²⁷ “Talking Consolidation – A Proposition to Unite the Tabernacle and First Baptist Churches,” *The Philadelphia Times*, March 12, 1893, 4.

²⁸ William Williams Keen, M.D., L.L.D., ed., *The Bi-centennial Celebration of the Founding of the First Baptist Church of the City of Philadelphia, 1698-1898* (Philadelphia: American Baptist Publication Society, 1899), 125.

²⁹ The report can be viewed at the Historical Society of Pennsylvania, call number UPA/Ph BX 6480.P5 F572.

³⁰ “Churches Plan Consolidation,” *The Philadelphia Times*, November 29, 1894, 7.

³¹ “Churches Plan Consolidation,” *The Philadelphia Times*, November 29, 1894, 7.

Many questions arise from this proposal: how would Rev. Rees be active in both the consolidated church and the colony church? What are his motives? How would creating a colony church be different from maintaining either two or three existing Baptist congregations?

Ultimately, these questions would not have to be answered. Less than one month later, Berean Baptist Church called upon Rev. Rees to serve as their pastor. He quickly accepted this offer, throwing a wrench in the plans to consolidate with First Baptist and Beth Eden Baptist. As narrated in the 1897 Membership Directory,

“On December 19, 1894, a call was extended to Rev. George E. Rees, pastor of the Tabernacle Baptist Church, Eighteenth and Chestnut Streets. The giving of this call opened the question of the consolidation of the Tabernacle and Berean churches, and after conferences covering several months had taken place, articles of agreement were adopted April 15, 1895, which brought about the union of the two churches under the name of the New Tabernacle Baptist Church of Philadelphia. This closed the history of the Berean Church.”³²

The Membership Directory does not include any references to potentially consolidating with First Baptist or Beth Eden, even though those conversations occurred for over a year. However, local papers continued to report on the state of affairs between the three, now four, congregations. Excerpts include the following:

December 1894: “Rev. Dr. George E. Rees’ acceptance of the call to the pastorate of the Berean Baptist Church, where he will preach his first sermon on the second Sunday in January, will open the way for the long-talked-of consolidation of the three congregations in the centre of the city”³³

January 1895: “The members of Tabernacle Church, who originally expected to join in the consolidation formed by the other two churches, has withdrawn with the idea of forming a consolidation with the Berean Church, Fortieth and Chestnut streets...The congregation passed a resolution to sell the property in view of the proposed consolidation with Berean”³⁴

August 1895: “In the gradual development of the consolidation scheme between the Berean and Tabernacle Baptist Churches...Such of the congregation of the Tabernacle as do not migrate to West Philadelphia when the arrangement between the churches is completed, will, it is expected, unite with the First Church, at Broad and Arch streets”³⁵

On September 2, 1895, formal applications were made in court to merge the two congregations.³⁶ Shortly after, New Tabernacle Baptist Church retained architect Frank Watson to design their new building to replace the existing 1859 structure at 40th and Chestnut. The Philadelphia Real Estate Record and Builder’s Guide (PRERBG) outlines the design process of the church’s construction from beginning to end. The PRERBG records for New Tabernacle Baptist Church can be found in Appendix A.

³² *Membership Directory of the New Tabernacle Baptist Church: Together with the Histories of the Tabernacle and Berean Churches Prior to Consolidation*, Philadelphia: Avil Printing Company, 1897, 11.

³³ “Religious Notes,” *The Philadelphia Inquirer*, December 29, 1894, 2

³⁴ Consolidation at Last: First and Beth Eden Baptist Churches Will Unite,” *Philadelphia Inquirer*, January 26, 1895, 6.

³⁵ “Religious News,” *The Philadelphia Inquirer*, January 12, 1895, 3

³⁶ “Here and There,” *The Philadelphia Inquirer*, August 8, 1895, 1

The initial plans for the church were reported as follows, in October 1895:

The foundation walls of the new Tabernacle Baptist Church, Chestnut Street, west of Fortieth, it is thought, will be laid before the Winter sets in. Contractors are now bidding on the work. The building will probably be ready for occupancy next September. The church will be built in Gothic style. It will have a 90-foot front on Chestnut Street. Octagonal turrets will rise upwards of 80 feet at each corner, and in the centre will be a large tracery window. Triple doorways, deeply recessed, will lead into a hallway, 20 x 27 feet. A vestibule on the right and left leads to the lecture hall in the second story, capable of seating 700 persons. The hall will open into a corridor, 15 x 24 feet, which leads to the main building. On each side of the corridor will be rooms, with a seating capacity for 200 persons. The auditorium will be amphitheatrical, and capable of seating 1000 persons. The arch over the pulpit, an important feature, will be deeply recessed, and ornamented with columns with foliated capitals. The arch will be flanked on the right by the organ arch and on the left by baptistry arch. Frank R. Watson, architect, 518 Walnut Street, prepared the plans..."

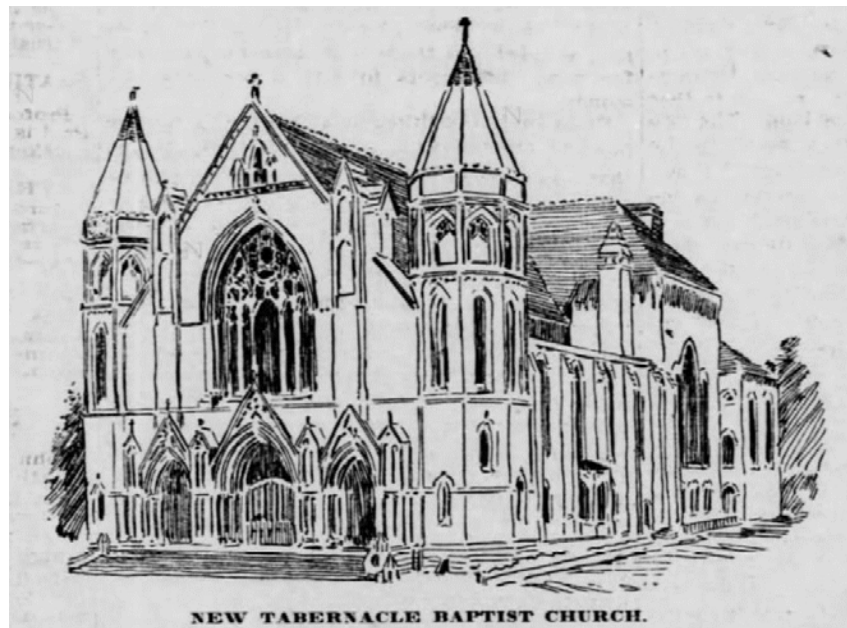


Figure 22. Depiction of New Tabernacle Baptist Church as printed in the *Philadelphia Inquirer* the morning after the cornerstone was laid.

According to Frank Watson's specifications, the stone and brick from Berean Baptist Church was to be salvaged and reused in the construction of New Tabernacle Baptist Church, except for salmon brick. Watson also stated in his specifications that "All workmanship to be the best known in the trade, and all materials to be strictly first class."³⁷ In a later amendment to the specifications, the price of a chosen tile is changed so the overall price is lowered to \$0.50 from \$1.25 –a budget-saving move but one that also indicates to the modern historian and consumer the high quality of materials Watson intended to choose for the congregation. A full set of original drawings of the church can be found at the Historical Society

³⁷ Frank R. Watson, "Specifications for Workmanship and Materials to be employed in the Erection and Completion of the New Tabernacle Baptist Church, on the North Side of Chestnut Street, West of 40th." Historical Society of Pennsylvania.

of Pennsylvania, call number Bc 615/W 333 TB. A selection of the drawings can be found in Appendix B, and the architect's specifications can be found at Appendix C.



Figure 23. Original architectural drawing of New Tabernacle Baptist Church, signed by Frank Watson. [Historical Society of Pennsylvania]

Though the University City Historical Society could not access the inside of the building, it appears the plans were built as described: the amphitheatrical seating, organ, and baptistry woodwork survive today, as seen in images on Christ Community Church's website:

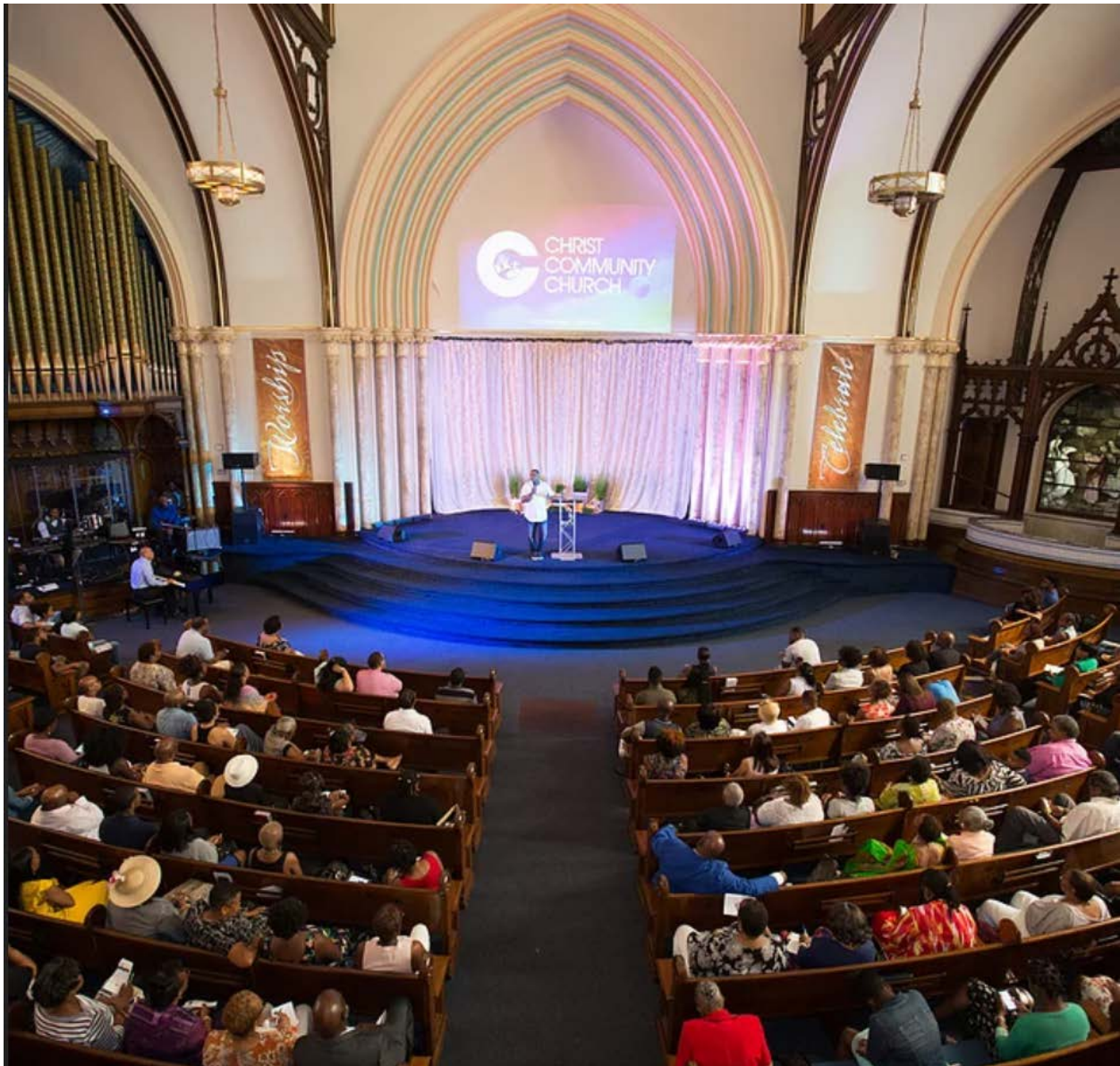


Figure 24. Interior of New Tabernacle Baptist Church auditorium, featuring a “deeply recessed” arch over the pulpit, amphitheatrical seating, foliated capitals, organ, and baptistry. [Christ Community Church website, <https://www.cccphila.org>

The cornerstone was laid on May 6, 1896 and was attended “not only by the members various congregations in West Philadelphia but by the pastors of numerous churches, both in the city and West Philadelphia.”³⁸ The building opened on March 10, 1897 and was reported to have cost \$113,586, \$76,000 of which was paid by opening day.³⁹

³⁸ “The Corner-Stone Laid,” *The Philadelphia Inquirer*, May 7, 1896, 7.

³⁹ “New Tabernacle Church Opened,” *The Philadelphia Times*, March 11, 1897, 3.

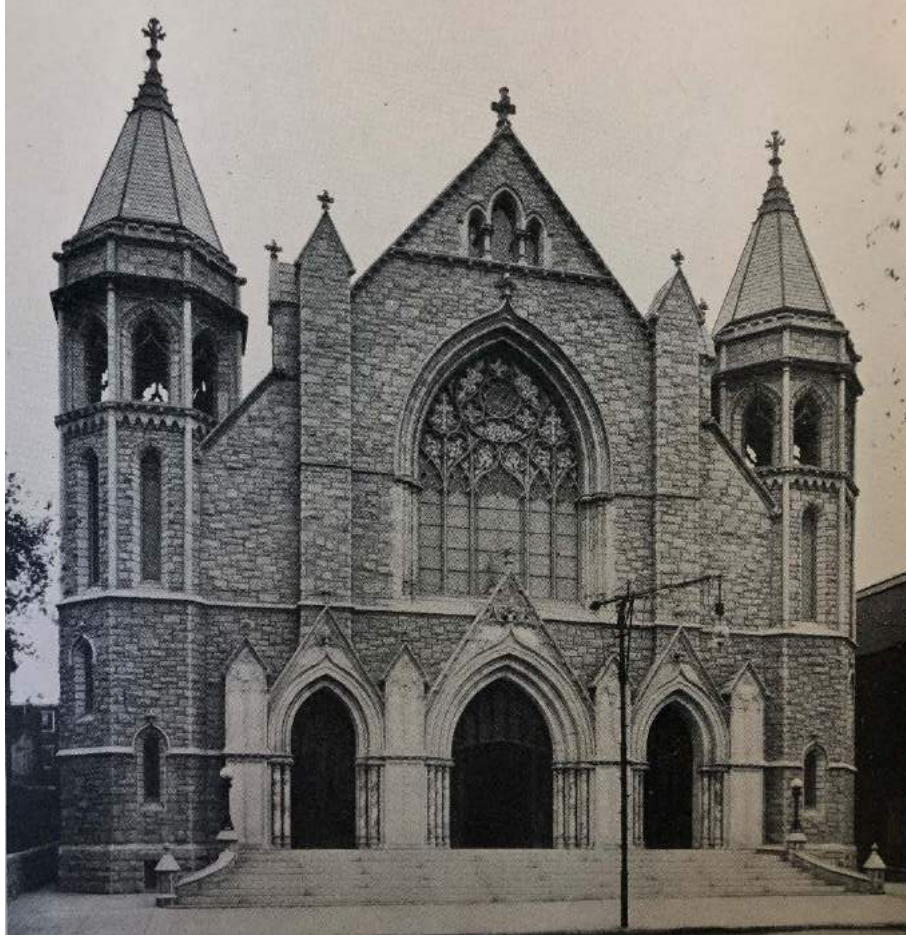


Figure 25. Photograph of New Tabernacle Baptist Church, soon before construction was completed (note unfinished stained glass windows in octagonal towers). [Historical Society of Pennsylvania, Frank Watson portfolio]

While the *Philadelphia Inquirer* reported that “many of the old members of Tabernacle Church remained” for consolidation, First Baptist Church recalled in an 1898 publication that “During this year we also had a large accession from the Tabernacle School, as their removal to West Philadelphia made it most inconvenient for many to go with them. Earnest Christian fellow-laborers are they !”⁴⁰ What is officially published in the Membership Directory, but not calculated as a statistic, are the members of the church in 1897. Indeed, rough calculations show that over 2/3 of the congregants were native to West Philadelphia. It comes down to a matter of convenience: congregants in Center City may not have wanted to travel to West Philadelphia to worship when congregations were abundant all around them – including the newly-merged First Baptist Church.

By the time New Tabernacle Baptist Church opened, institutions such as the University of Pennsylvania had moved to West Philadelphia, streetcar lines had opened, and speculators were setting their sights on undeveloped land around and further west from the church. However, “As speculative building practices evolved, so did the demographics of the inhabitants who were purchasing the houses. These less elaborate and more compact houses strictly appealed to the middle class. However, despite the mass of speculative

⁴⁰ “New Tabernacle Church Opened,” *The Philadelphia Times*, March 11, 1897, 3; William Williams Keen, M.D., L.L.D., ed., *The Bi-centennial Celebration of the Founding of the First Baptist Church of the City of Philadelphia, 1698-1898* (Philadelphia: American Baptist Publication Society, 1899), 382-3.

middle class housing that was being erected, a number of Philadelphia's families of wealth continued to choose West Philadelphia as the location for their estates.”⁴¹ This very well justifies why Rev. Rees wished to move to West Philadelphia, as opposed to remaining between the rivers – there remained a consistently growing and diverse population of potential congregants, unlike Center City’s already established, and in some cases dwindling, congregations.

New Tabernacle Baptist Church and Chestnut Street Baptist Church in the 20th Century
Rev. Rees retired in 1909.⁴² On January 29, 1910, the *Philadelphia Inquirer* reported,

“Historic churches of this city that have enjoyed a wide reputation will hold farewell services tomorrow and on Sunday, February 6, will combine and will be known as the Chestnut Street Baptist Church. The churches are the Epiphany and the New Tabernacle Baptist Churches.”

Epiphany Baptist Church was formerly known as the First Baptist Church of West Philadelphia, mentioned previously in this nomination as having given rise to Berean Baptist Church. On their fiftieth anniversary in 1898, the congregation changed their name to Epiphany Baptist.⁴³ As such, in April, 1910, the title was officially transferred from New Tabernacle Baptist Church to Chestnut Street Baptist Church for “a consideration said to be nominal.”⁴⁴ In this sense, for the Levy brothers at least, things came full circle as the two congregations they helped lead had come together.

Chestnut Street Baptist Church operated out of 4017-21 Chestnut Street until 2004. In the late twentieth century, the church was integral in resettling refugees from Laos, Cambodia, and Vietnam in the West Philadelphia community. The church hosted ESL classes, accepted donations of furniture and other goods for the refugees.⁴⁵ The church also hosted classical concerts of the University of Pennsylvania’s university choir. In 2004, the congregation closed and sold the building to what is now Christ Community Church.

(d) Embodies distinguishing characteristics of an architectural style or engineering specimen

New Tabernacle Baptist Church is a well-preserved example of the Gothic Revival style. Gothic Revival was one of the most important architectural styles to emerge in the United States during the Victorian period, not only for religious structures, but also for residential, educational, and institutional uses.

⁴¹ National Register of Historic Places, West Philadelphia Streetcar Suburb Historic District, Philadelphia, Pennsylvania, National Register #97001669.

⁴² *The Philadelphia Inquirer*, October 9, 1909, 6.

⁴³ *Public Ledger Almanac* (Philadelphia: Geo. W. Childs, 1894), 50.

⁴⁴ “Convey Church Title,” *Philadelphia Inquirer*, April 23, 1910, 9.

⁴⁵ *The Philadelphia Inquirer*, April 28, 1980; May 13, 1982; July 1, 1984; October 19, 1980; August 25, 1980; July 11, 1980; January 9, 1980 November 26, 1979; March 7, 1979; October 19, 1978; October 11, 1978; June 29, 1978; May 5, 1978.

The Gothic Revival emerged as a call for the romantic and picturesque in a quickly industrializing era. Gothic architectural historian Phoebe Stanton wrote that “The wish to copy Gothic architecture and the thoughts about building which developed as a result were singularly expressive of the respect and nostalgia for the past which were characteristic of the nineteenth century.”⁴⁶ Augustus Charles Pugin and his son Augustus Welby Northmore Pugin were among the first proselytizers of the Gothic revival, publishing *Specimens of Gothic Architecture* (1821), *Examples of Gothic Architecture* (1838), *Contrasts* (1836), and *The True Principles of Pointed or Christian Architecture* (1841). These works by the Pugins brought scale drawings to a mass audience as well as persuasive arguments for using the Gothic.⁴⁷ Furthermore, the Gothic style was seen as anti-industrial; Gothic enthusiasts such as John Ruskin argued against machine-made building materials, stating “There are two reasons, both weighty, against this practice: one, that all cast and machine work is bad, as work; the other, that it is dishonest.”⁴⁸ To Ruskin and his contemporaries, Gothic architecture was solid: it revealed the true form of a structure without the veneers and inauthentic finishes that characterized Classical Revival architecture.

Nineteenth century religious institutions in particular were attracted to Gothic architecture because “they believed its formal, “churchly” style conveyed a sense of permanence and prestige. Even Protestant denominations that had once been deeply suspicious of Catholic forms and elaborate decoration embraced the movement, appropriating stylistic elements that had previously aroused passionate opposition.”⁴⁹ While utilizing Gothic architecture once implied

Stanton observed that “Gothic revivalism arrived in North America in the form of the English Gothic revival, with its preference for the English medieval parish church as a model for ecclesiastical architecture.”⁵⁰ In Philadelphia, this can be seen in the Church of Saint James the Less, constructed in 1846. The English parish style of Gothic Revival proved to be a good match for the bucolic suburban setting of the Chestnut Hill neighborhood.

⁴⁶ Phoebe Stanton, *The Gothic Revival and American Church Architecture: An Episode in Taste, 1840-1856* (Baltimore: Johns Hopkins University Press, 1968), xvii.

⁴⁷ Mark Gelernter, *A History of American Architecture* (Hanover: University Press of New England, 1999), 144.

⁴⁸ John Ruskin, *The Seven Lamps of Architecture* (London: Smith, Elder & Co, 1849), 48.

⁴⁹ Thomas F. Rzeznek, *Church and Estate: Religion and Wealth in Industrial-Era Philadelphia* (University Park: The Pennsylvania State University Press, 2013), 88.

⁵⁰ Phoebe Stanton, *The Gothic Revival and American Church Architecture: An Episode in Taste, 1840-1856* (Baltimore: Johns Hopkins University Press, 1968), xviii.



Figure 26. Saint James the Less, built in 1846 after Saint Michael's Church, Cambridgeshire. An example of the picturesque, parish revival that characterized early Gothic Revival. [Library of Congress]

Only one year later, John Notman designed Saint Mark's Episcopal Church. This took a more high Gothic revival style on a larger and more urban parcel.



Figure 27. Saint Mark's Episcopal Church, 16th and Locust Streets, constructed 1847-1849. [Library of Congress]

West Philadelphia boasts and boasted many examples of Gothic Revival churches, many of which also lined Chestnut Street with New Tabernacle Baptist Church. These include/included:

- Asbury Methodist Episcopal – 33rd and Chestnut. Constructed in 1883. Suffered a fire in 1997 and subsequently demolished.
- Woodland Presbyterian Church – 42nd and Pine. Extant.
- St. Agatha, St. James Church – 38th and Chestnut. Designed by Edwin Forrest Durang, 1881-1887. Extant.
- Tabernacle United Church – 37th and Chestnut Street. Designed by Theophilus Chandler, 1883-1886. Extant.
- First United Presbyterian Church – 52nd and Chester. Designed by Joseph M. Huston, 1909-1910. Extant.
- Christ Memorial Reformed Episcopal Church – 43rd and Chestnut. Designed by Isaac Pursell, 1887, demolished in 2018 for a vacant lot.

With West Philadelphia an emerging neighborhood at the time these congregations were building churches, it makes sense that congregations would choose a style evoking permanence, stability, and age. While the neighborhoods of Spruce Hill, Manuta and Hamiltonville were only a few decades old, many of these churches had designs that looked like they were built centuries earlier.

New Tabernacle Baptist Church is distinctive in comparison to many of the above-listed West Philadelphia churches in that it falls in the middle of the 4100 block of Chestnut Street, rather than on a corner parcel. Its massing is neither overwhelming to the surrounding built environment nor overshadowed by neighboring structures. Yet, its façade is striking among the rowhomes, parking lots, a police station, and modern buildings that pepper this particular block of Chestnut Street, likely due in part to the employment of Gothic revival design features.

(e) Is the work of a designer, architect, landscape architect or designer, or engineer whose work has significantly influenced the historical, architectural, economic, social, or cultural development of the City, Commonwealth or Nation;

Designed by architect Frank Rushmore Watson in 1896-7, New Tabernacle Baptist Church replaced the Berean Baptist Church building on the same site. Watson was a prolific ecclesiastical architect, practicing from the late nineteenth century through the first half of the twentieth century.

A biography written by Sandra Tatman in the *Philadelphia Architects and Buildings* database reads as follows.

“Frank R. Watson was one of the most important of the several architects specializing in church design in Philadelphia during the late nineteenth and early twentieth centuries. He was born in the Frankford section of Philadelphia, the son of Samuel and Anna B. Watson. After graduating from Central High School in 1877, Watson entered the office of Edwin F. Durang, an eminent architect concentrating on Catholic church projects during the last quarter of the nineteenth century. Watson spent five years with Durang before establishing his own independent firm in 1882/3. While not limiting his practice to Catholic projects, Watson still became well known for his church designs. So successful was he that he opened a branch office in Atlantic City, NJ in 1898.

In 1901/02, when Samuel Huckel returned to Philadelphia, a partnership between the two was established under the name Watson & Huckel. Huckel's experience with Benjamin D. Price, another architect known for his church designs, as well as his experience with Edward Hazelhurst in the firm of Hazelhurst & Huckel stood the new partnership in good stead; and the office prospered until Huckel's death in 1917. Watson then continued practicing independently until 1922, when he was joined by the younger architects, George E. Edkins, and William Heyl Thompson. At the outset this firm was one of association, but soon the name became Watson, Edkins & Thompson. When Edkins moved to Oaklyn, NJ in 1936, Watson & Thompson continued in practice until Watson's death in 1940.

Watson joined the American Institute of Architects (AIA) in 1901, served as president of the Philadelphia Chapter in 1927, and was made a Fellow in 1930. He also held memberships in the Historical Society of Frankford, the Medieval Academy of America, the Philadelphia Museum of Art, and the Union League. He was given an honorary doctor of Fine Arts degree from Muhlenberg College. He also served as a delegate to the Pan American Congress of Architects meetings in South America in 1923 and 1927 and as technical advisor to the Philadelphia Housing Association from 1929 to 1932. In 1929 he was made an honorary member in the Mexican Society of Architects. When the Architects Building Corporation was established to oversee the design and construction of that dedicated highrise, Watson was elected president of the corporation.”⁵¹

The *Philadelphia Historical and Commercial Review of Leading Merchants and Manufacturers*, published as part of the *Pennsylvania Historical Review*, had high praise for Frank Watson, writing the following:

“Mr. Watson is a native of Philadelphia, and early in life applied himself with characteristic energy to the study of his profession, and brings to bear on his business a wide range of potential experience, coupled with an intimate knowledge of the requirements of the city. He has executed several important architectural commissions since he commenced the practice of his profession in 1881, designing and superintending the following buildings, viz.: The State Fencible Armory, Broad Street; St. Leo’s Catholic Church, Tacony, Pa.; Temple Baptist Church, Twenty-second and Tioga streets, and several splendid stores and mansions in Philadelphia and vicinity. These buildings are much admired for their stability and elegance, while the elaboration of detail and the care bestowed on every department of his work reflect great credit on his skill and ability. Mr. Watson is all times prepared to give estimates and furnish plans and specification to the views of those intending to build, and can always be implicitly relied on to spare no time or pains to fill the expectations of patrons. Personally, he is held in the highest estimation in commercial circles for his unswerving honor and integrity, and is thoroughly conversant with the wants of Philadelphia and is fully competent to carry to successful completion all work pertaining to his profession.”⁵²

The September 17, 1887 morning edition of *The Times – Philadelphia* provided “a list of the foremost architects” in which Watson was listed, along with Cope & Stewardson, Edwin Durang, Wilson Eyre Jr., G. W. and W. D. Hewitt, Willis Hale, Addison Hutton, and John Windrim, and others. The entry for Frank R. Watson reads “Mr. Watson is classed at the top in his profession, as a view at the following

⁵¹ Sandra Tatman, “Frank Rushmore Watson (1859-1940)”, *Philadelphia Architects and Buildings Database*.

⁵² *Pennsylvania Historical Review: City of Philadelphia Leading Merchants and Manufacturers* (New York: Historical Publishing Company, 1886), 248.

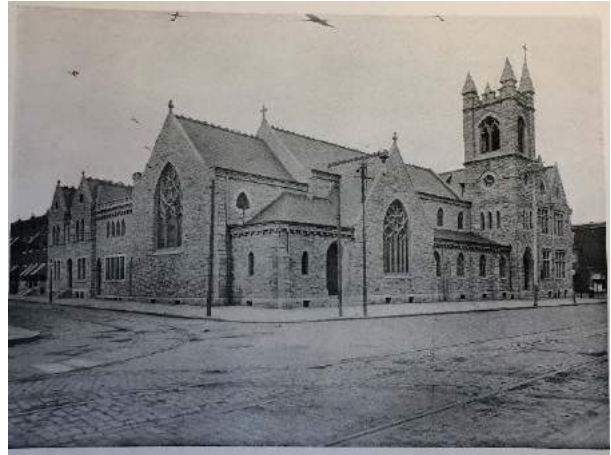
handsome structures will verify: State Fencibles Armory, Temple Baptist Church and the National Security Bank.”⁵³

Below are examples of churches designed by Watson in Philadelphia around the same time as New Tabernacle Baptist Church. They retain similar massing and form to New Tabernacle Baptist Church – a mostly parish-style form but with higher Gothic elements.



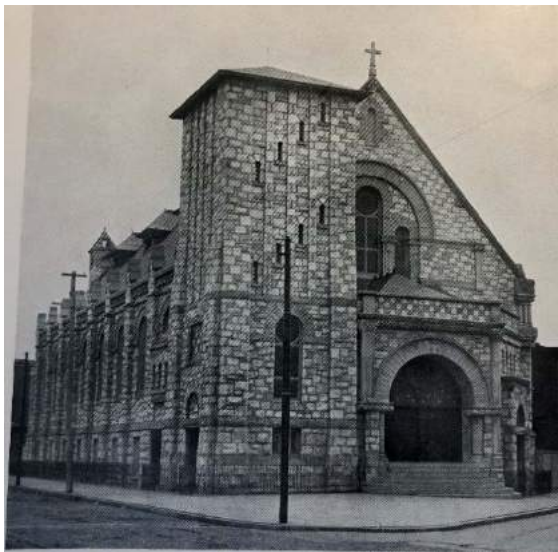
St. Stephen's Roman Catholic Church
Broad and Butler Streets
1896

Historical Society of Pennsylvania



St. Stephen's Protestant Episcopal Church, Parish
House, and Rectory
9th and Lehigh
1889

Historical Society of Pennsylvania



Roman Catholic Church of St. Anthony de Padua
Gray's Ferry Road and Fitzwater Street
1892

Historical Society of Pennsylvania

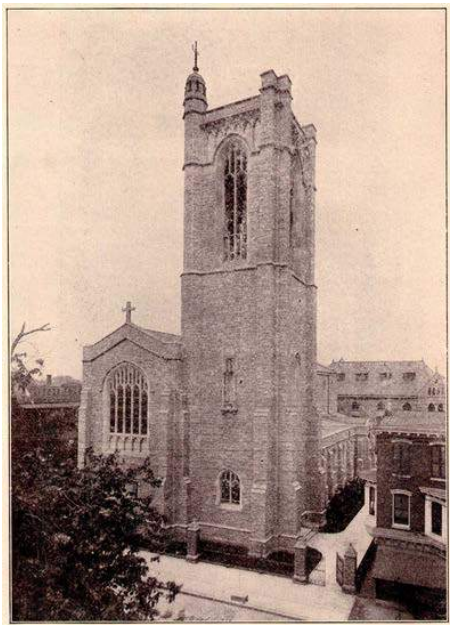


St. Leo the Great
Keystone Street, Tacony
1894

Library of Congress

⁵³ *The Times—Philadelphia, Saturday Morning*, September 17, 1887, page 10

With his various partnerships, Watson continued to explore church forms in the Gothic and Romanesque styles. These twentieth century churches, examples of which follow below, take on a grander scale than the parish-style forms of his nineteenth century houses of worship.



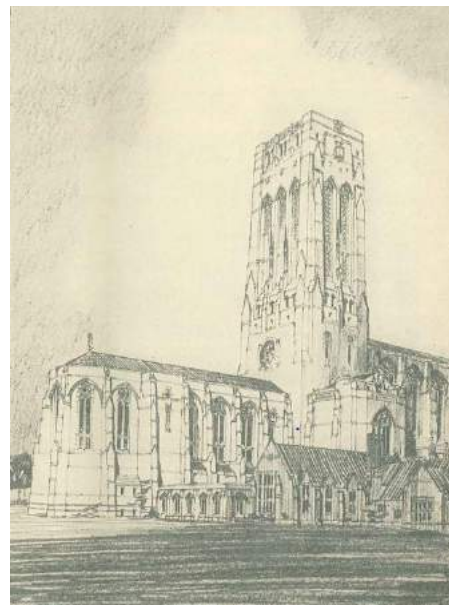
Watson & Huckel, Architects
ST. MARK'S CHURCH, FRANKFORD
Saint Mark's Episcopal Church, Frankford
Watson & Huckel, 1907
The Church News (1916)



First African Baptist Church
16th and Christian Streets
Watson & Huckel, 1904
Temple Urban Archives



Our Lady of the Rosary Catholic Church
339 N 63rd Street
Watson, Edkins and Thompson 1887
City of Philadelphia Department of Records



Cathedral Church of Christ
Ridge Avenue, Roxborough
Watkins, Edkins and Thompson, 1932
The Church News (1932)

Watson is an important figure in the Philadelphia architectural canon, especially for his ecclesiastical design spanning throughout the City of Philadelphia. While many of the above Watson designs had the flexibility of larger parcels and corner lots, New Tabernacle Baptist Church still retains many similar features, including tripartite portals, large stained glass windows, and towers. Therefore, New Tabernacle Baptist Church deserves to be recognized as part of the Watson canon under Criterion (e).

(h): Owing to its unique location or singular physical characteristic, represents an established and familiar visual feature of the neighborhood, community or City

The New Tabernacle Baptist Church has faced Chestnut Street, a westbound thoroughfare in West Philadelphia, for over 100 years. Furthermore, a church has occupied that same parcel since 1859 – for a grand total of 160 years. It is therefore a recognizable architectural feature on Chestnut Street for pedestrians, bikers, drivers, and bus passengers alike. The following maps and pictures show the evolution of Chestnut Street from sparsely built to a dense urban thoroughfare, all the while including either Berean Baptist Church or New Tabernacle Baptist Church on the 4000 block of Chestnut Street.

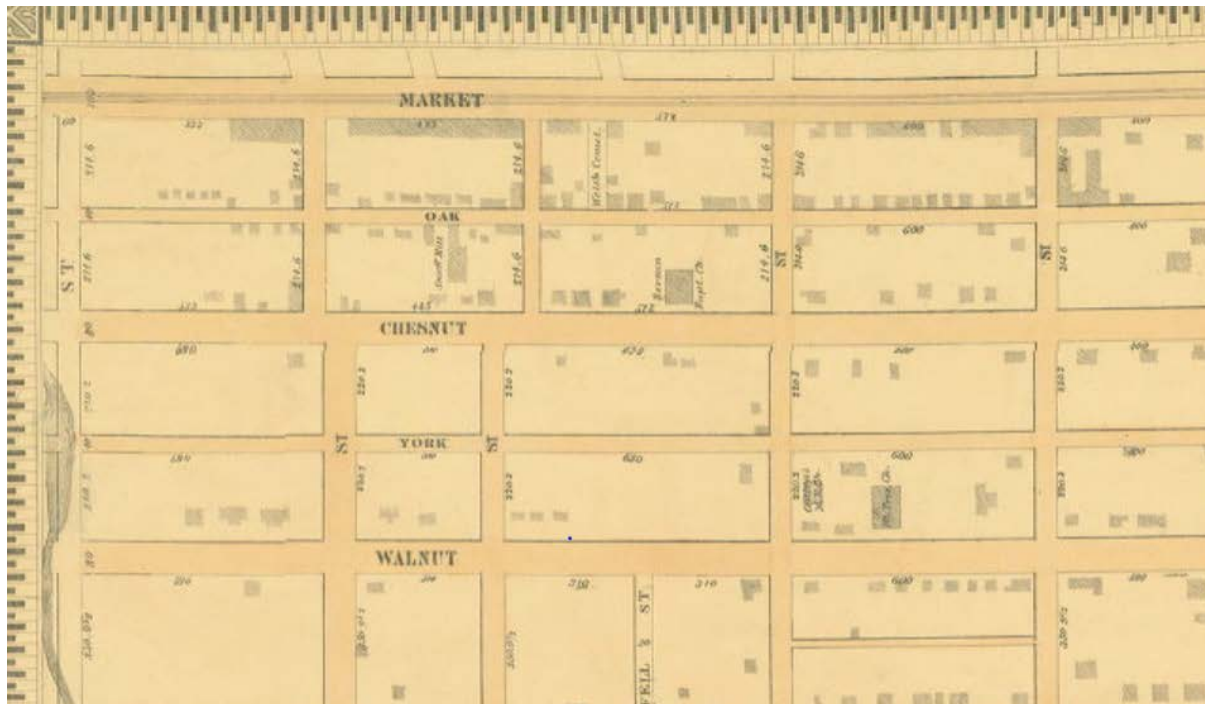


Figure 28. Samuel Smedley., *Atlas of the City of Philadelphia*, 1862. This map was drawn only two years after Berean Baptist Church opened; Chestnut Street and this section of West Philadelphia generally was peppered with single-family country estates and a few churches.



Figure 30. Looking east down Chestnut Street from 41st Street; the turrets of New Tabernacle Baptist Church visible in the background. Ca. 1906. [University of Pennsylvania Archives Digital Image Collection]



Figure 31: Chestnut Street between 40th and 41st Streets, April 1962. [University of Pennsylvania Archives Digital Image Collection]



Figure 32. New Tabernacle Baptist Church, looking west from 40th Street. Postcard produced by Mercantile Studio, 1907. [University of Pennsylvania Archives Digital Image Collection]



Figure 33. Looking west on Chestnut Street towards New Tabernacle Baptist Church. While some nineteenth century speculative housing has remained consistent on the street, others have been replaced by modern intrusions. However, 4017-21 Chestnut Street has consistently contained a church building since 1860. [Arielle Harris, September 2019]

Conclusion

New Tabernacle Baptist Church merits designation in the Philadelphia Register of Historic Places under Criteria (a), (d), (e), (h), and (j).

The parcel on which New Tabernacle Baptist Church sits was formerly the location of Berean Baptist Church. When Berean Baptist Church merged with Tabernacle Baptist Church, the two congregations built a new building on the same parcel. Therefore, a church has continuously occupied this parcel along Chestnut Street since 1860, thereby satisfying Criterion (h) as a recognizable visual feature of the city.

New Tabernacle Baptist Church satisfies Criteria (d) and (e) as an important example of Gothic revival architecture, designed by noted church architect and native Philadelphian Frank Rushmore Watson. Watson likely chose the Gothic style not only because it was fashionable at the time, but also because it exemplified the picturesque qualities that were emerging in West Philadelphia through its speculative residential housing stock.

Finally, New Tabernacle Baptist Church satisfies Criteria (a) and (j) by exemplifying not only what became a common practice of merging Baptist congregations in nineteenth-century Philadelphia, but also the migration of Philadelphians to West Philadelphia in the mid-to late nineteenth century. It is remarkable that the New Tabernacle Baptist Church building has survived the West Philadelphia speculation of the late nineteenth and early twentieth centuries, mid-century urban renewal, and ever-present university expansion on all four sides. As Chestnut Street Baptist Church, the congregation remained relevant to the constantly changing and diverse community of University City by committing to the cause of settling refugee populations and hosting university events. Therefore, it is all the more important that the history of this important structure be recognized by the City of Philadelphia and the building remain standing for future generations to enjoy.

8. MAJOR BIBLIOGRAPHICAL REFERENCES

Repositories

Philadelphia City Archives
Historical Society of Pennsylvania
Temple University Urban Archives
University of Pennsylvania Archives
City of Philadelphia Department of Records
Greater Philadelphia Geohistory Network
Athenaeum of Philadelphia
Philadelphia Architects and Buildings Database

Newspapers

The Philadelphia Inquirer
The Philadelphia Public Ledger
The Philadelphia Times
The Philadelphia Evening Bulletin
Philadelphia Real Estate Record and Builder's Guide

Works Cited

- Beisert, Oscar. "Nomination to the Philadelphia Register of Historic Places: First African Baptist Church." 2016.
- Cathcart, William, D. D., ed. *The Baptist Encyclopedia*, Vol. 2. Philadelphia: Louis H. Everts, 1883.
- Gelernter, Mark. *A History of American Architecture*. Hanover: University Press of New England, 1999.
- Jones, Horatio Gates. "Historical Sketch of the Lower Dublin (Or Pennepek) Baptist Church." Philadelphia: 1869. Web.
<http://baptisthistoryhomepage.com/penn.pennepek.lower.dublin.history.html>
- Keen, William Williams, M.D., L.L.D, ed. *The Bi-centennial Celebration of the Founding of the First Baptist Church of the City of Philadelphia, 1698-1898*. Philadelphia: American Baptist Publication Society, 1899.
- Membership Directory of the New Tabernacle Baptist Church: Together with the Histories of the Tabernacle and Berean Churches Prior to Consolidation*, Philadelphia: Avil Printing Company, 1897.
- Mills, Reginald. "American Baptist Churches in the U.S.A." *Encyclopedia of Christianity in the United States, Volume 5*, ed. George Thomas Kurian and Mark A. Lamport. Lanham, Maryland: Rowman and Littlefield, 2016.
- National Register of Historic Places, West Philadelphia Streetcar Suburb Historic District, Philadelphia, Pennsylvania, National Register #97001669.
- "Neafie & Leavy, Philadelphia, PA," shipbuildinghistory.com, Web, September 18, 2019.

Newman, A. H. D.D., L.L.D. *The American Church History Series, Volume II: A History of Baptist Churches in the United States*. New York: The Christian Literature Company, 1894.

Pennsylvania Historical Review: City of Philadelphia Leading Merchants and Manufacturers. New York: Historical Publishing Company, 1886

Philadelphia Baptist Association. "History | Philadelphia Baptist Association." Web.
<http://philadelphiabaptist.org/history/>

Priest, Gerald L. "The Philadelphia Baptist Association and the Question of Authority," *Detroit Baptist Seminary Journal*, Vol 12, Issue 1 (Fall 2007).

Public Ledger Almanac. Philadelphia: Geo. W. Childs, 1894.

Ruskin, John. *The Seven Lamps of Architecture*. London: Smith, Elder & Co, 1849.

Rzeznik, Thomas F. *Church and Estate: Religion and Wealth in Industrial-Era Philadelphia*. University Park: The Pennsylvania State University Press, 2013.

Scharf, J. Thomas and Thompson Westcott, *History of Philadelphia, 1609-1884*, Vol. 3.
Philadelphia: L. H. Everts & Co., 1884.

Stanton, Phoebe. *The Gothic Revival and American Church Architecture: An Episode in Taste, 1840-1856*. Baltimore: Johns Hopkins University Press, 1968.

Appendix A. *Philadelphia Real Estate Record and Builder's Guide* (PRERBG) entries about New Tabernacle Baptist Church

PRERBG p. 217 (4/24/1895): "The Berean and Tabernacle Baptist Church congregations have now consolidated under the name of The New Tabernacle Baptist Church, and will during the current year inaugurate measures for the erection of a new building upon the site of the Berean structure in West Philadelphia. A joint Building Committee will be appointed at an early day. The new congregation will, after the sale of their property, materially alter Pilgrim Church, at Twenty-third and Christian Streets, as it is an offshoot of the Tabernacle Church. At present no definite action can be taken on the above, or until some disposition is made of the old property, Chestnut Street above Eighteenth Street. Rev. Dr. George E. Rees will be the pastor of the joint congregation, with an assistant yet to be appointed."

PRERBG 8/28/2895: "Frank R. Watson, architect, 518 Walnut Street, has been retained to prepare plans for the new Berean Baptist Church at Fortieth and Chestnut Streets, West Philadelphia. This will be one of the largest and finest edifices in this city, when completed, and will possess many new and striking features both upon the interior and exterior. As all the details in regard to material, etc., have not been arranged, we shall defer a more extended notice until a later day."

PRERBG 9/11/1895: "The Board of Trustees of the New Tabernacle Baptist Church met on the 2d inst. in the old Tabernacle Church, Chestnut Street, above Eighteenth, and organized by electing Levi Knowles, president, and R. C. Mustin, Jr., secretary. The other Trustees are J. H. C. Whiting, H. G. Kepler, E. H. Hollis, Hiram Ilorter, Jr., C. W. Moody, W. H. Tumbleston, W. S. Righter, Joshua Smedley, Thomas H. Belcher, J. B. Jones and H. C. Tyler. This congregation has become attached to the Berean Baptist Church, Fortieth and Chestnut Streets, and will join in the erection of a new and handsome edifice after plans by the well known architect, Frank R. Watson. Plans will be noted in full when completed."

PRERBG 10/2/1895: "The plans in detail for the new Berean Baptist Church at Fortieth and Chestnut Streets, are nearing completion but at present a few material points have not been agreed upon by the Building Committee, hence we cannot give a description in full as to material, etc. In a former issue we outlined very nearly what would be the general principles introduced in construction of this large and elegant house for worship. The estimates will probably be asked upon its construction at an early day. In style, beauty and capacity it will be the equal of any in this country with rare exceptions."

PRERBG 10/23/1895: "The foundation walls of the new Tabernacle Baptist Church, Chestnut Street, west of Fortieth, it is thought, will be laid before the Winter sets in. Contractors are now bidding on the work. The building will probably be ready for occupancy next September. The church will be built in Gothic style. It will have a 90-foot front on Chestnut Street. Octagonal turrets will rise upwards of 80 feet at each corner, and in the centre will be a large tracery window. Triple doorways, deeply recessed, will lead into a hallway, 20 x 27 feet. A vestibule on the right and left leads to the lecture hall in the second story, capable of seating 700 persons. The hall will open into a corridor, 15 x 24 feet, which leads to the main building. On each side of the corridor will be rooms, with a seating capacity for 200 persons. The auditorium will be amphitheatrical, and capable of seating 1000 persons. The arch over the pulpit, an important feature, will be deeply recessed, and ornamented with columns with foliated capitals. The arch will be flanked on the right by the organ arch and on the left by baptistry arch. Frank R. Watson, architect, 518 Walnut Street, prepared the plans, which have been fully noted in a previous issue of this journal."

PRERBG 10/30/1895: "Contracts have not been awarded for the new Tabernacle or Berean Church, to be erected at Fortieth and Chestnut Streets, and estimates are still being made by general contractors. The building will have a front of 87 feet and a depth of 140 feet. Light gray stone, with Indiana limestone trimmings, will be used for the exterior, and the style is gothic. A feature is the main front, which will have three entrance doorways of highly ornamental design. They will be flanked by two octagonal stone towers, 87 feet high, and there will be a large tracery window in the front gable. The interior is to be finished in oak and the main auditorium will have a vaulted ceiling, with massive oak beams. The basement is to contain a kitchen and dining and entertainment rooms. Past the main floor there will be two lecture rooms in addition to the auditorium. Entrance to this part of the church will be gained through a corridor wainscoted with Macenae marble and having a groined ceiling. Two large stairways of marble and iron lead to the second floor, where the Sunday school and galleries are to be located. The seating capacity will be 1000."

PRERBG 11/6/1895: "The plans by Frank R. Watson, architect, 518 Walnut Street, for the new Tabernacle Baptist Church, on Chestnut, above Fortieth Street, are still being estimated on by general contractors. These drawings have been fully noted in previous issues of this journal. The walls are to be of dark Avondale stone or Port Deposit or Holmesburg granite. The columns jit entrance to be of Creole Georgia marble polished. The contract will likely be awarded at an early day."

PRERBG 11/20/1895: "Revised estimates are asked on the new Tabernacle Baptist Church, at Fortieth and Chestnut Streets. The drawings are somewhat modified, height reduced and plaster ribbing substituted for oak wood. Other minor details reduce the cost of construction materially. Mr. Frank R. Watson, architect, made all drawings and will supervise the work of building. Previously noted in full in this journal."

PRERBG 12/11/1895: "George W. Stewart, contractor, 230 Diamond Street, has been awarded the contract to erect the Tabernacle Baptist Church, 40th and Chestnut streets, for which plans were prepared by Frank R. Watson, architect, 518 Walnut Street and who will supervise the entire work of construction. The material for the exterior walls will be decided upon at an early day."

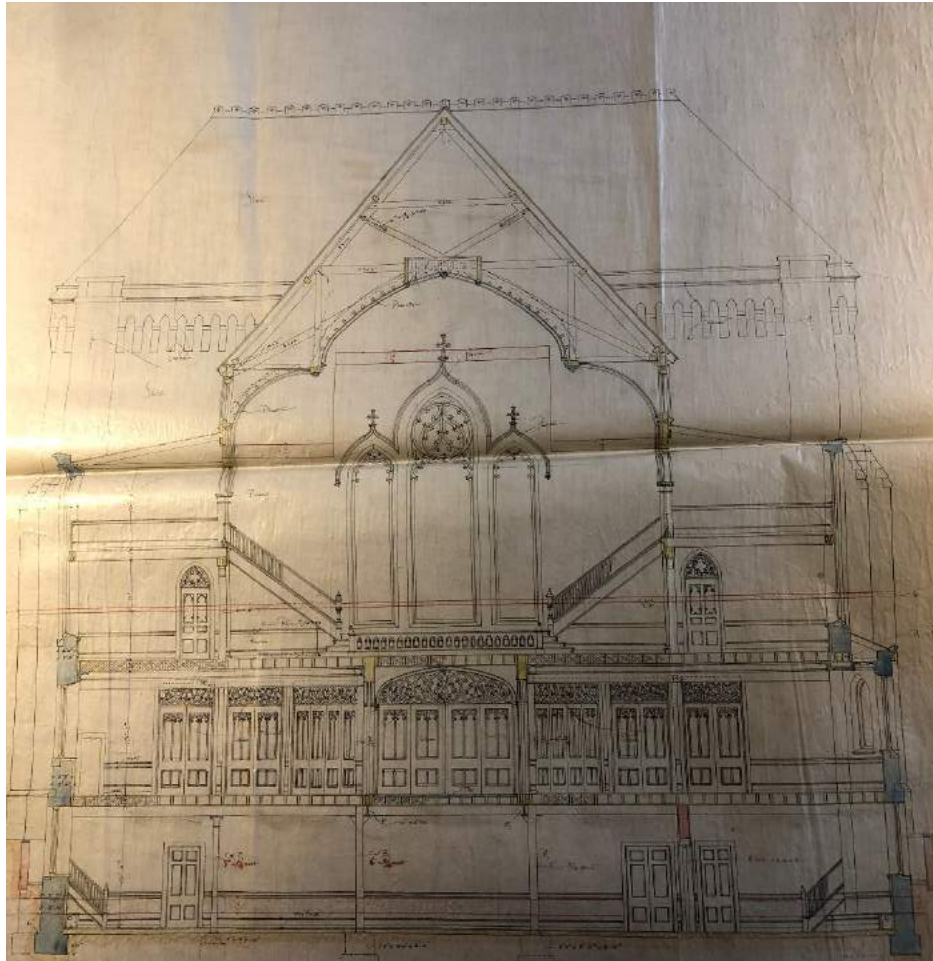
Appendix B. Selected drawings of New Tabernacle Baptist Church, stored at the Historical Society of Pennsylvania. The full set of 16 drawings can be found at call number Bc 615/W 333 TB.



South elevation, with signatures of church trustees in lower right corner.



East elevation



Interior cross-section, looking north

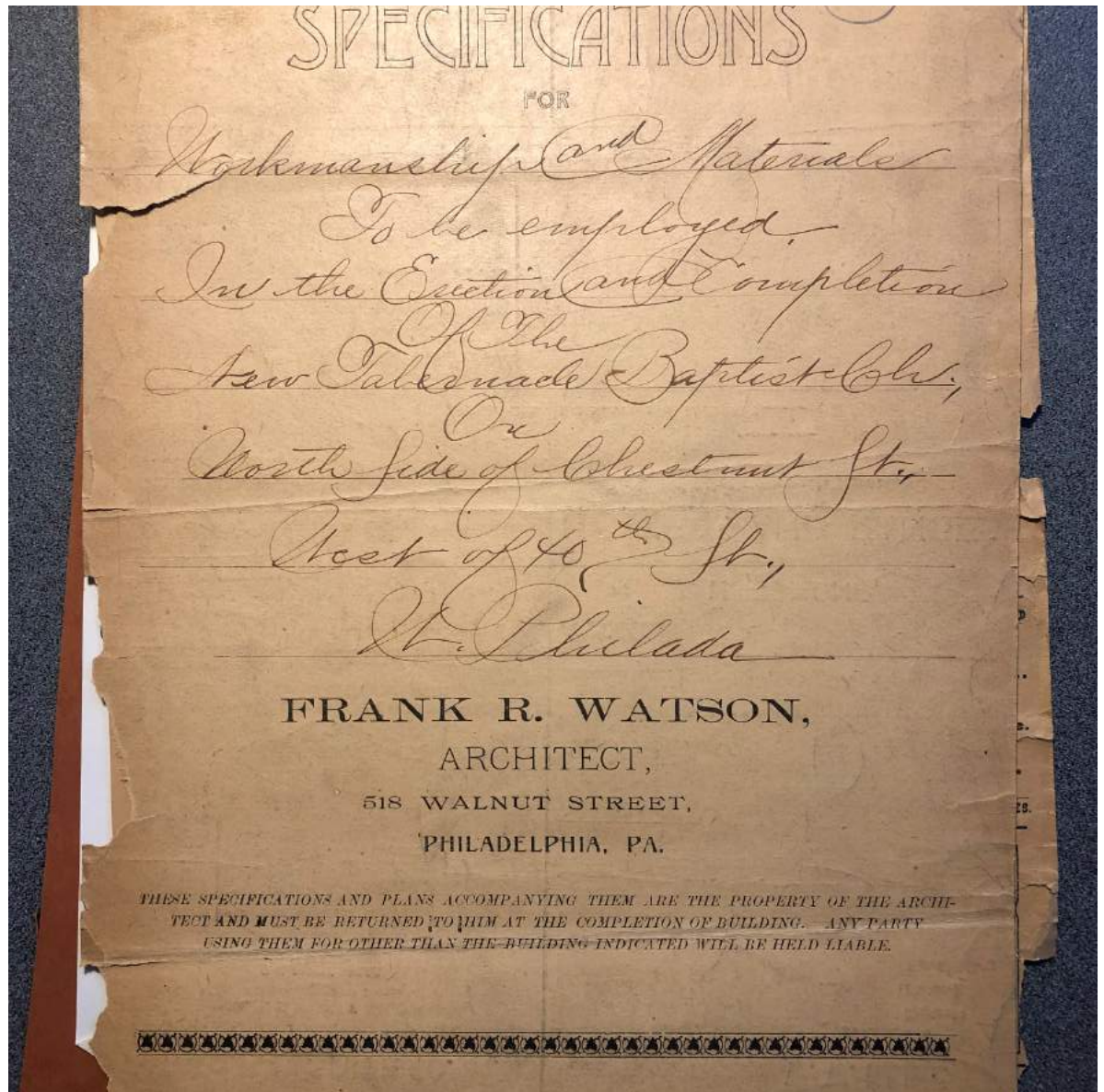


Interior cross-section, looking south



Interior cross-section, looking west

Appendix C. Architect Frank Watson's Specifications for New Tabernacle Baptist Church, stored at the Historical Society of Pennsylvania.



The following changes are mutually agreed to, and accepted by both parties to the contract:-----

1st. The height of the building is to be lowered two (2) ft. that is there is to be 2 ft. taken out of the stone work, at such places as the Architect may direct. (1'-6" to be taken from Sunday School Basement 6" from S. School.)

2nd. Instead of the compound girders spanning the lecture rooms there are to be 8" iron columns 3/4 metal substituted with their necessary footings, foundations etc., supporting wooden girders with "fitch" plates.

3rd. Oak stairs, (same detail as those in main auditorium to church gallery, accepting main newels which are to cost \$ 50.00 each.) are to be substituted for the marble and iron stairs from 1st., to 2nd., floors main stair hall.

4th. The tracery transoms over the doors from lecture rooms to main auditorium, (6 in all) are to be omitted, and plain transoms in one light substituted.

5th. The tile in the main corridor and stair halls shall cost (50 ¢) fifty cents per foot instead of \$ 1.25

6th. It is optional with the contractor to build the building of either of the following stones:--Georgia Marble front, light Avondale sides; Light Avondale front and sides; Port Deposit front and sides; Front and sides of the stone of which the Betz Building Philadelphia is erected. The face stone in all cases to average 8" in bed. The Georgia Marble shall be trimmed with Georgia Marble and the other stones with Indiana Lime stone respectively.

The quality of these materials to be approved by the Architect.

9th. The tracery panels in the buttresses and doorway pediments

N. N. J.

Works

ies for

ABANTEED

ER..

ipbia.

ES, Etc.

HE.
will be

FARTIES.

NT
VT
T
PA.
OF.

Chick

3337B

of the workmanship and materials to be employed in the erection of the spires are to be constructed of frame, as directed by the Architect, covered with the same slate as the roof, and to have the upper ornament and hip rolls of 16 oz. gold rolled copper.

Slate to be laid same as that of the roof,---
The contractor for the said work is to find and provide at his own proper cost and expense, all the workmanship, tools, material, labor, freight, cartage, and whatsoever else is necessary to fully complete the said work, according to the working and general drawings, these specifications, and the direction of the Architect, Frank H. Watson, and the said plans, and to carry out the same.

The contractor shall pay for all surveys, permits, and other privileges, and for the lines and stakes and with the

He shall take no notice of any discrepancy which might exist between the drawings and specifications, but shall refer all such matters to the Architect's decision shall be final.

He shall push the work without delay, and shall begin the work immediately upon the award of the contract.

The old building now on the premises are to be torn down and the stone and brick used in the construction of the new building. No other old materials shall not be used in the new building except the roof sheathing, and the old joist and studding, (should they be the proper size and quality) at the discretion of the Architect.

The sizes of the timbers shall be in all cases up to the requirements of these specifications. No one will be allowed by the Architect, which does not fill these requirements.

All old materials not used shall be the property of the Contractor. The contractor is expected to complete the building of

J. N. J.

Works

ies for

AFANTIEP

IER..

phia

IS, etc.

DEL

will be

PARTIES

NT

NT

NT

PA

OF

of

of

of

of

of

of

of

of

of

of

of

of

of

of

of

of

of

of

of

of

of

of

of

of

of

of

of

of

of

of

of

of

of

of

of

of

of

tion and completion of the New Tabernacle Baptist Church on north side of Chestnut St., W. of 40th., St. W. Philada.-----

The steam heating and "GENERAL CONDITIONS."

The Contractor for the said work is to find and provide at his own proper cost and expense, all the workmanship, tools, material, labor, freight, cartage, and whatsoever else is necessary to fully complete the said work, according to the working and general drawings, these specifications, and the direction of the Architect, Frank R. Watson, and electric fixtures, and brass work.

The contractor shall pay for all surveys, permits, and city privileges, at the time such changes are made and with the same. He shall take no undue advantage of any discrepancy which might exist between the drawings and specifications, but shall refer the same to the Architect whose decision shall be final.

He shall push the work without delay, and shall begin the work immediately upon the awarding of the contract. Except any or all sides. The old buildings now on the premises are to be torn down and the stone and brick used in the construction of the new building. The other old materials shall not be used in the new building except the roof sheathing, and the old joist and studding, (should they be the proper sizes and quality) at the discretion of the Architect. Half on the contract price.

The sizes of the timbers must be in all cases up to the requirements of these specifications, and none will be allowed by the Architect, which do not fill these requirements. respective work.

All old materials not used shall be the property of the Contractor. The contractor is expected to complete the building, ex-

(No. 3)

N. N. J.

Works

ics for

ADANTEED

ER..

Alpha

ES, Etc.

HE
will be

PARTIES.

NT
VT
T
PA
OF

Church

The outside pavement. church.
The fencing. tion of these specifications, or drawings, that do not
The steam heating and ventilating. ances or the city, shall be made
The electric lighting. the contractor.-----
The furniture and organ. "TERRING OUT."
The leaded glass. church and parsonage are to be entirely torn out, and
The stone carving, and plaster modeling, and "Macedonia Marble."
The frescoing. mitted in these specifications.) The old material
The gas, and electric fixtures, and brass work. ried away from the
Any changes in the building affecting the contract, shall be
put in writing, at the time such changes are made and with the
amount of the addition to, or deduction from, the contract price, and
signed by the Chairman of the Building Committee, and the Architect,
otherwise no allowance will be made for the same.
The above conditions shall all be made part and parcel to the
contract. The Committee reserves the right to reject any or all
bids. (bidders will give price for excavations below the depths
show) The contractor shall be responsible for all damage whatsoever
to adjoining properties, and for any accident to persons or property
The contractor shall give satisfactory Trust Co. Security for the
faithful performance of the contract, and against liens to the
amount of one half on the contract price. of concrete, sizes shown
The contractor shall grant to special contractors (electrical,
steam heating and etc.) the privilege of working in the building
as soon as it is in condition to receive their respective work,
and shall give them such assistance as is usual and customary for
the proper introduction of their work. The plasterers scaffold
shall be allowed to remain for the use of the fresco painters.
(4)

J. N. J.

Works

ies for

APARTIES

ER..

phia.

ES, Etc.

RE.
will be

PARTIES.

NT
VT
T
PA.
OF

Church

3337D

contractor to take them out of the building, and the future use of the church.

Foundation stone under the towers shall be not less than 36 inches square. (These must be especially selected.) The lower foundation stone shall comply with existing laws, or ordinances of the city, shall be made good at the expense of the contractor.

"TEERING OUT."

The old church and parsonage are to be entirely torn out, and the old material cleaned and stacked for use in the new building.

The walls from grade up are to be faced with either Port Deposit, Holmesburg, or Dark Avondale stone, laid in rock face broken range work, pointed in equal parts of Dyckerhoff, Manheim, or Allison's Portland Cement, and bar sand, and in color selected by the Architect.

"EXCAVATIONS."

Separate estimate to be given for front in Creole Georgia. The cellars, basements, and trenches for all foundations, and etc., are to be excavated to depths shown on the drawings.

The stone walls above grade are to be backed with the old depths of all outside steps, retaining wall, and pier foundations are shown now in the building, and should any new backing be required not shown on the drawings, they shall be dug not less than 3 ft., below the graded surface of the ground, at the respective points, men stone, and of an approved quality. All walls shall be well bedded and bonded, and those above grade to be built with mortar, composed of fresh burnt lime, and good washed gravel.

(Bidders will give price for excavations below the depths shown on the drawings, should additional be required.)

All dirt to be carted away from the premises, as well as all rubbish, when the building is completed.---(See General Conditions.)

"STONE WORK."

The footings throughout are to be made of concrete, sizes shown on the drawings, and may be backed with hard brick, at the discretion of the Architect. The retaining walls between the church and coal, 1 part of either Saylor's Giant or Atlas Portland Cement, and 2 parts of either bar sand or washed gravel, all thoroughly manipulated and rammed in trenches.

The foundations where stone from footings to grade to be of

N. N. J.

Works

les for

ABANTEED

ER..

phia.

ES, Etc.

RE.

ce will be

PARTIES.

NT
NT
NT
PA.
OF

inside of towers. The window and tower shall be not less than 364
Foundation stone under the towers shall be of the face stone, except where otherwise marked on the draw-
men stone. (These must be especially selected.) The tower founda-
tions as well as the tower walls their entire height, shall not be
foldings. The carving will not be included in this contract.
tied to the other walls of the building, but shall be built with a
(Bidders will give price for stone work per perch and con-
straight joint from top to bottom. (For brick foundations, see Brick
Work.)

The drawings should any be required. (See General Conditions.)

The walls from grade up are to be faced with either Port De-
posit, Holmesburg, or Dark Avondale stone, laid in rock face broken

The steps of the main entrance shall be of granite, also the
range work, pointed in equal parts of Dykerhoff, Manheimer, or Alison's
Portland Cement, and bar sand, and in color selected by the Architect
dressed. (The "Platan" shall be paved.)
Separate estimate to be given for front in Creole Georgia

The remainder of the cut stone work throughout the building
Marble, trimmed with the same.

shall be of No. 1 Indiana Lime Stone, finished in fine dove work.

The stone walls above grade are to be backed with the old
stone now in the building, and should any new backing be required
it shall be a large sized building stone, not less than 1-2-and 3
feet in length, except columns in main entrance which shall be of
men stone, and of an approved quality. All walls shall be well bedd-
ed and bonded, and those above grade to be built with mortar, com-
posed of fresh burnt lime, and good washed gravel.

The area walls and chimneys shall be capped with 8" flag, neatly
dressed. The area steps, and basement window and door sills.

Any piers occurring in the stone walls of less width than
1'-6" shall be backed with hard brick, laid in equal parts of the
not to be used above grade. Should this be insufficient for this
above named cement and gravel. All arches shall run entirely
purpose, the Indiana stone shall be used. The carving will not be
through the wall, and may be backed with hard brick, at the discreet-
ion of the Architect. The boiler pit and coal bin walls to
be capped with 8" flag.

adjoining properties shall be faced with the same stone as the
church and have rustic coping.

The cut stones to the stanchion and column piers are to be
granite, dressed top and bottom, and vices marked on the drawings.
All windows and outside doors' jambs where not otherwise mark-
ed shall have the necessary holes drilled in them for stay bolts

N. N. J.

Works

lies for

APPROVED

ER..

lphia.

ES. Etc.

will be

PARTIES.

NT
VT
T
PA
OF

inside of towers. The window and door jambs and arches are all to be of the face stone, except where otherwise marked on the drawings. The contractor shall give the carver the use of the scaffolding. The carving will not be included in this contract. Marble (Bidders will give price for stone work per perch and concrete per yard, for additional foundations below depths shown on the drawings, should any be required. (See General Conditions.))-----
Brick. All stanchion "CUT STONE." piers where indicated, shall be of hard The steps of the main concourse shall be of granite, also the platforms, and door sills of the main entrance. All fine hammer dressed. (The "Platze" shall be paved.) of hard brick. The rear wall is The remainder of the cut stone work throughout the building shall be of No. 1 Indiana Lime Stone, finished in fine drove work. This shall include all water tables, window sills, door sills, gable copings, buttresses, finials, string courses, and every item of cut stone drawings, except columns in main entrance which shall be of Georgia Georgia marble polished. be topped out with stretchers backed The area walls and chimneys shall be capped with 3" flag, neatly dressed. The area steps, and basement window and door sills, where below grade, may be made of the old brown stone. This must not be used above grade. Should this be insufficient for this purpose, the Indiana stone shall be used. The carving will not be included in this contract. The boiler pit and coal bin walls to be capped with 2" flag, named.

The cap stones to the stanchion and column piers are to be granite, dressed top and bottom, and sizes marked on the drawings, and shall have the necessary holes drilled in them for stay bolts

N. N. J.

Works

lies for

APANTEED

ER..

lphia.

ES. Etc.

RE.

will be

PARTIES

WT
WT
PA.
OF

The baptistry is to be carried up the side of the
bracery in front and lower windows of stone, and for the use of the
brick, laid in equal parts of the above named cement and sand.
Three different kinds of face stone, for facing walls, and Georgia
Marble in front. (See General Conditions.)-----
laid in cement and sand as above named.

"BRICKWORK."

The boiler room shall be paved with brick. (See General Condi-
tions.)-----
All brickwork below the 1st. floor line shall be of hard

brick. All stanchion or column piers where indicated, shall be of
"CARPENTER WORK & LUMBER."

hard brick laid in equal parts Saylor's Giant or Atlas Portland
Cement and bar sand and all grouted. All rough brick work and
Fine sleepers at 2ft. centres these shall be treated with creosote
backing throughout the building, to be of hard brick. The rear
and laid on 1' of coal tar preparation and backed up on the sides
walls of the church to be faced with No. 1 dark stretcher brick,
with the same and filled in with bar sand. (The floors of corridors
laid with buttered joints in white mortar.
to be of patent pavement.)

The stacks and rafterpeers adjoining them shall be built of
The flooring throughout the basement shall be No. 1 narrow
hard brick throughout. All stacks and flues whether ventilating
Georgia heart flooring set nailed, not over 3" wide,
or otherwise, shall be built of hard brick and have struck joints

The 1st. floor joist shall be 3 x 12 spruce at 16" centres, ex-
inside. The two rear stacks shall be topped out with stretchers
cept where the spans run over 20ft., where they shall be at 12 inch
backed with hard brick as above specified.
centres, and in main auditorium floor where they shall be 3 x 10

The two vent stacks in front of the transepts shall be topped
hemlock at 16" centres.

out with stone. The interior partition walls shall be of hard
All bays less than 20ft., to be bridged one row. All above

brick where indicated on the drawings.
20ft., to be bridged two rows, including those of the main audito-

The cellar window areas and the outside step area walls (sides
rises floor with stout lattice bridging 2 x 3 well spiked to joist.
of building) shall be of hard brick faced with stretchers, laid in

The girders of the main auditorium shall be made up of 3
cement and sand as above named.
pieces of 3 x 12 hemlock spiked together. The platforms shall all

All workmanship to be the best known to the trade, and all
be thoroughly tarred up, and perfectly stiff and strong.

materials to be strictly first class. Should any of the old brick
be flooring throughout this floor shall be No. 1 Georgia
be salmon they must be used according to the Architect's direction.

N. N. J.

Works

ies for

ABANDONED

ER..

lphia.

ES. Etc.

NE.
will be

PARTIES.

NT
VT
AT
PA.
OF

brick, and laid in equal parts of the above named cement and sand. The bottom of the baptistry is to be arched with 9" brick arches, laid in cement and sand as above named.

The boiler room shall be paved with brick. (See General Conditions.) Bricks sprung to form, and spiked together.

There shall be **CARPENTER WORK & LUMBER.** (See gallery (church))

The basement floor, except corridor shall be laid on 3 x 4 V. Pine sleepers at 2ft. centres these shall be treated with creosote and laid on 1" of coal tar preparation and banked up on the sides with the same and filled in with bar sand. (The floors of corridors to be of patent pavement.) shall be of 4 pieces of 3 x 12 V. Pine

The flooring throughout the basement shall be No. 1 narrow Georgia heart flooring secret nailed, not over 3" wide. 10 x 10 V.

The 1st. floor joist shall be 3 x 12 spruce at 16" centres, except where the spans run over 20ft., where they shall be at 12" inch centres, and in main auditorium floor where they shall be 3 x 10 hemlock at 16" centres.

All bays less than 20ft., to be bridged one row. All above 20ft. to be bridged two rows, including those of the main auditorium floor with stout lattice bridging 2 x 3 well spiked to joist.

The borders of the main auditorium shall be made up of 3 pieces of 3 x 12 hemlock spiked together. The platforms shall all be thoroughly ferred up, and perfectly stiff and strong.

The flooring throughout this floor shall be No. 1 Georgia Heart flooring not over 3" wide and secret nailed.

Works

ies for

ies for

ies for

ies for

ies for

ies for

ies for

ies for

ies for

ies for

ies for

ies for

ies for

The gallery joist shall be 3 x 10 hemlock at 16" centres, and bridged one row. The gallery in the church shall have steps ferred up as per sectional drawings, and all perfectly stiff and secure.

This girder shall be made up of 10 pieces of 1 x 12" boards, (No. 2 W. Pine) sprung to form, and spiked together.

There shall be a curb on the ends of these gallery (church) joists, made up of 2 thicknesses 1 x 12 broken jointed.

The flooring in these galleries and 2nd. floor shall be the same as the first. The other floor girders shall be made up of 4 pieces of 3 x 12 spruce bolted together at 2'-6" centres. The Sunday School gallery girders shall be of 4 pieces of 3 x 12 Y. Pine bolted together as above.

The 3rd-story posts carrying S.S. roof shall be 10 x 10 Y. Pine planed and chamfered.

The robing room in the 2nd. floor shall have 3 x 10 hemlock joists at 16" centres and bridged one row.

The towers at the upper staging shall have bell floors carried on 6 x 12 Y. Pine timbers at 2ft. centres, and have trap left in same.

All outside walls to be stripped throughout the building. All interior stone and brick walls to be stripped. Inside steps to have Y. Pine treads and risers.

The water closet partitions shall be of No. 1 Virginia lining.

The mouldings, plaster columns, cornices, and all ornamental work ribs, arches, groins, etc., shall be properly ferred for.

N. N. J.

Works

lies for

APANTEED

IER..

Ipbia.

ES. Etc.

RE.
s will be

PARTICE.

NT
VT
LT

PA.
OF

and sizes marked on the drawings. The jack rafters shall be hemlock and at 2'-0" centres, and worked on ends where exposed.

The sheathing shall be No.1 hemlock sheathing. The rafters on the flats shall be 3 x 8 at 2ft. centres. Sheathing on exposed eaves to be No.1 Virginia lining beaded and exposed rafters to be worked on ends.

The clere story shall be furred up with 3 x 4 outside and 2 x 3 inside at 16" centres, all hemlock. All inside partitions to be studded with 3 x 4 hemlock at 16" centres. The sides shall be sheathed with No.1 hemlock sheathing. The timbers between the posts shall be as per sectional drawings. (Clere story S.S. Building) The sides and cheeks on main roof to be sheathed with the same.

The ventilators in the ceiling shall have trap to open and close, and controlled from some convenient point in the gallery. The ventilators on the roof to be properly furred up for copper.

All beams shall be packed out with joist where necessary. All copper work to be properly furred and bracketted.

The stair framings, and those around stacks, and elevator framings in floor, in fact all framings required by law, to be hung with iron stirrups. All floors to be planed after the building is completed. The 1st. story corridors throughout shall be prepared for tile. The coal bin shall be built on the wall as indicated on the plan.

Where drains run through the dining room and kitchen, they shall be covered as shown and have Y. Pine cap on ledge 1 1/4" thick (Contractors shall give alternate estimate for the omission of

N. N. J.

Works

lies for

The finish of the respective rooms shall be as follows:
glass above the lock rail.

Basement all white pine.

The other outside doors and frames shall be of White pine, and
1st. story corridor oak. All tracery transoms in these corridors
doors 2" thick. Side entrance doors to basement, shall be glass
to be of oak and 4" from front to back.

above lock rail, and to be 2" thick and the double doors into the
Main auditorium throughout oak.

dining room shall be glass above the lock rail.

Sunday School rooms and gallery cypress.

The 1st. story corridor doors opening into church and those
at front vestibule, shall be as per drawings and 2" thick, and glass

Pastors retiring room and corridors to same, cypress.
panels, and all to have frames and transoms as shown.

Ceiling ribs, and ceiling tracery, including ventilator tracery in
The doors between the main auditorium and lecture rooms, shall
main auditorium oak. (Ceiling ribs in chapel to be of plaster.)
be 2" thick, glass above lock rail and as per drawings, with tran-

soms and etc. All other interior doors to be 2" thick, and all to
be of wood. Those of the main auditorium to be of oak with
be panelled and moulded, and to be of the woods named below, for the
chapel and oak panels. The platform fronts main auditorium, to be
respective portions of the church.

Where architrave finish is required, it shall be 6" wide, in-
cluding 2 x 2 1/2" band, and all moulded.

The basement will not be wainscotted, but will have wash-

boards 12" high, including caps.

The window frames throughout, shall be of white pine with 3"
Y. Pine outside sills and 1 1/4" inside sills of the same wood as
including sub and cap, and these rooms also to have chair rails

the finish of the respective rooms.

2 x 4 These frames shall be made up of scantling, and shall be mould-

ed on the inside the same as the outside, and have tracery worked
The Sunday School and Sunday School gallery to be treated in
the same manner with cypress, including all stair halls, and corri-

in them as per drawings. This tracery, and the frames, shall not

be less than 8" from front to back in any case and 12" in the

The church gallery will not be wainscotted, but will have
large front frame, and in the upper tower windows.

wash board 12" high, including sub and cap.

(Contractors shall give alternate estimate for the omission of
the large front window frame, and all tower frames.)

The gallery fronts shall be provided as per drawings, and
the large front window frame, and all tower frames, shall be of wood.

N. N. J.

Works

lies for

ABANTEED

ER..

lphia.

ES, Etc.

HE.

will be

PARTIES.

NT
NT
IT
PA
OF

ns

All items of mill work required for the building shall be as follows:-----
The finish of the respective rooms shall be as follows:-----
Building, shall be furnished by the contractor.

Basement all white pine.

The kitchen and store rooms are to be provided with dressers.
1st., story corridor oak. All tracery transoms in these corridors
shelving, and etc., as indicated on the drawings.
to be of oak and 4" from front to back.

Platform fronts to be panelled as shown on the drawings, in
Main auditorium throughout oak.

Sunday School rooms and gallery cypress.

The screens at Baptistry, and in chancel shall be of oak, and
Poking rooms cypress.

as per sectional drawings. (There will be no upholstering on the
Pastors retiring room and corridors to same, cypress.

Pulpit seats or backs.) All hard wood doors including cypress to
Ceiling ribs, and ceiling tracery, including ventilator tracery o in
be veneered.

main auditorium oak. (Ceiling ribs in chapel to be of plaster.)

All wood carving on mill work shall be included in this con-
(The wainscoting of the 1st., story corridors throughout will

not be of wood.) Those of the main auditorium to be of oak with
"STAIRS."

quartered oak panels. The platform fronts main auditorium, to be

The stairs are all to be boarded up on stout hemlock horses,
same as the wainscoting.

and shall be as follows:-----

The basement will not be wainscotted, but will have wash-
Main stairs (except the main flights, from 1st., story corridor to
board 12" high, including caps.

And, which will be iron and marble to be as follows:-----

The lecture rooms of the 1st., story shall have 12" wash boards
with panels as indicated on sections. Small panels 6" square worked
including sub and cap, and these rooms also to have chair rails
and drops.

2 x 4.

Stair doors and moulded, as per drawings. Balusters 3" x 3" apart

The Sunday School and Sunday School gallery to be treated in
and turned handrail 4 x 4 Treads 1 1/4 risers 4/4 oak. Spondrills
the same manner with cypress, including all stair halls, and corri-
panelled, panel to have gothic heads. All to be of oak.

Stairs to gallery Main Auditorium:--- Newels string, and balusters

The church gallery will not be wainscotted, but will have
(Tracery) to be as shown on sectional drawings, and all oak.
wash board 12" high, including sub and cap.

Treads 1 1/4 risers 4/4.

The gallery fronts shall be moulded as per drawings, and

tower to be of oak.

All items of Mill Work required for the completion of the building, shall be furnished by the contractor.

The kitchen and store rooms are to be provided with dressers, shelving, and etc., as indicated on the drawings.

Platform fronts to be panelled as shown on the drawings, in all cases.

The screens at Baptistry, and in chancel shall be of oak, and as per sectional drawings. (There will be no upholstering on the pulpit seats or backs.) All hard wood doors including cypress to be veneered.

All wood carving on mill work shall be included in this contract.

"STAIRS."

The tower columns in the S. School gallery shall be encased

The stairs are all to be horsed up on stout hemlock horses, and shall be as follows:-----

Main stairs (except the main flights, from 1st. story corridor to 2nd., which will be iron and marble) to be as follows:-----

Main newels as indicated on sections. Small newels 5" square worked tops and drops.

String close and moulded, as per drawings. Balusters 3" set 3" apart and turned. Handrail 4 x 6 Treads 5/4 risers 4/4 oak. Spandrills panelled, panel to have gothic heads. All to be of oak.

Stairs to gallery Main Auditorium:--- Newels string, and balustrade (tracery) to be as shown on sectional drawings, and all oak.

Treads 5/4 risers 4/4.

gallery but of oak. The stair builder will include any carving
which may occur on main newels.-----
on the under side, and two on the upper side, and all properly placed

"PLASTERING."

All walls, partitions, ceilings, and everything usually plastered, including the soffitt of the stairs, shall be plastered in 3 coat laid off work, and finished in sand float work in white sand, except the basement ceiling which shall be finished in white work. The plaster mouldings, columns, cornices, etc., shall be run in white plaster in the usual manner. There shall be no plaster behind the wainscoting.

The columns of the main auditorium, and all others where indicated shall be of plaster. All iron stanchions, or columns, above the basement shall be incased with plaster.

The tower columns in the S. School gallery shall be encased with plaster. All moulded, and columns work shall be run on expanded metal, or patent stiffened wire lath, of an approved make.

All plastering over iron work wherever it shall occur shall be on the above named wire or metal lath.

The plaster shall be composed of fresh burnt lime and bar sand and the proper proportions of hair.

The plasterer shall set up securely and complete, all the ornamental modeled and foliated work, which will be furnished by the Committee. There will be no tinting in the plaster.

All workmanship to be strictly first class in every respect. work shall be painted 3 coats in addition to the metallic paint.

"ROOFING."

The entire steep portion of the roof to be covered with No. 1

N. N. J.

Works

ties for

APARTMENT

TER..

phia.

ES, Etc.

RE.

ra will be

PARTIES.

INT
VT
PA.
OF

Style, Taylor's Old Style, or Hall's Old Style Tin, painted one coat on the under side, and two on the upper side, and all properly cleaned.

Where the roof joins the stone work, or brick work, in all cases it shall have 4 lb. lead aprons walled in, all to be of sufficient width to thoroughly turn down and cover the counter flashing.

The clerestory window frames shall be under-panned with tin which shall extend entirely through the wall to the back of the window frames.

The cornices where marked on the drawings, including eaves mould in clerestory, the dental work on transept cheeks, the clerestory window frames, including the tracery the ventilator on the roof, and the down spouts (except where cast iron - See Plumbing.) are to be of 16 oz. copper. The cresting is to be terra cotta and as per drawings. The roofing must be a first class job in every respect, as the contractor will be held responsible for any leakage or damage therefrom for at least two (2) years.

There shall be a Hayes Skylight, or one equally as good on flat over Baptistry. Manufacturer to glaze the same with 1/4" ribbed, or hammered glass.-----

"PAINTING."

The entire work usually painted, shall have 3 coats of the best lead and oil, and in such tints as directed. All exposed iron work shall be painted 3 coats in addition to the metallic paint.

The window frames of the front and tower shall be sanded if painted. (Contractor shall give alternate estimate omitting the painting of the front and tower frames which may be stone.) The

N. N. J.

Works

Dies for



JAPANESE

CEB..

Alphie.

ES, Etc.

THE
re will be

PARTIES.

ENT
NT
LT
PA.
OF

two coats of woodhouse's excelsior liquid and one of hard oil lin-
ish, which all other interior wood work shall have. All rubbed down
on the last coat, except the basement. The cypress shall all be rub-
bed down on the last coat.

The glass throughout the building will not be included in
this contract, except the glass in the doors from the main corridor
to front stair hall, which shall be bevelled plate glass, and shall
extend from the bottom to the top rail of the doors, and the windows
in the basement having sash. (See Mill Work) which shall be glazed
with 2nd. quality double thick Quinton glass, the outside doors of
main entrance, which may be polished plate, (not beveled) above lock
rail, and upper panels, side entrance doors to basement 1/8" hammered
glass.

HARDWARE.

The outside basement doors are to be hung on 3 pairs of pol-
ished plated bronzed butts, ball tips, and are to have mortice locks
equal to # 1222 1/2 Reading with bronze outside and inside # 791
knobs, and escutcheon plates # 1344 3/4 and top and bottom exten-
sion flush bolts with bronzed iron faced # 895. The interior base-
ment doors are to be hung on 4 x 4 butts of the above named quality
and shall have Reading locks # 1222 1/2 or those equally as good
with combined bronze escutcheon plates # 1344 3/4 and ball hard
wood knobs # 80

The closets and dressers are to be fitted up in the usual man-
ner and have good quality fittings as follows:--butts #37 1/2
2 x 2 Cupboard turns # 433.

The sliding doors are all to be hung on "Coburn" Anti-Friction

N. N. J.

Works

Dies for
S

WARRANTED

KER.

Alpha.

ES, Etc.

IRE.

will be

PARTIES.

ENT
NT
LT

PA.
OF

from entertainment room to kitchen, are to be hung on 3 pairs of door checks of bronze finish. The main entrance doors, center are to be hung on hangers named above, and shall have sliding door lock #1383 1/2 (imitation 87 finish) or one equally as good and shall have inside and outside escutcheon plates # 1432 Westminster, (imitation 87 finish) both inside and outside.

The two other main entrance doors shall be hung on 3 pairs of 6 x 6 #081 bronze butts, (imitation 87 finish) and have escutcheon plates # 1392 "Westminster" bronze metal (imitation 87 finish) and lock # 1716 1/2. Knob P. 002322 or one equally as good. These doors shall have top and bottom extension flush bolts, # 1884 "Westminster" with bronze faces (imitation 87 finish.)

The doors between the front stair hall and main corridor are to be hung on Chicago Double acting butts, bronzed iron finish #31

The doors from main corridor to church, and those of 2nd. vestibule to Sunday School, are to be hung on 3 pairs of 5 x 5 plain polished bronze butts, ball tips # 081 and have Blount door spring of bronzed iron finish. These doors and those between stair hall and main corridor shall have heavy plain polished bronze pushes, #2276 1/4 (4 x 24) and pulls #P. 1163 Plate 4 x 24 as the case may require and top and bottom extension flush bolts P. 1884 with polished bronze metal faces on each door. No locks.

The doors between lecture rooms and church are to be hung (3 hinges to the door) on 4 1/2 x 4 1/2 bronze polished butts, P. 071, ball tips, and to be provided with top and bottom extension flush bolts polished bronze faces, #P. 1879 and to have mortice lock # 1222 1/2 or those equally as good, and polished bronze key

handles #P. 1451 1/2.

N. N. J.

Works

Dies for

S

JAPANESE

KER..

Alpha.

ES, Etc.

THE
re will be

PARTIES.

ENT
NT
LT

PA.
or

polished bronze knobs #P. 272 with polished bronze es-
s-
on those equally as good, and knob, #P. 272 with polished bronze es-
s-
cutchion plates #1344 3/4. The ceiling ventilators are to have
traps rigged with hinges, pulleys, cords, (See Carpenter Work.)

The closets shall all be provided with the necessary coat
hooks and etc., and trimmed the same as the other interior doors.

The basement windows are to have galv. iron wire guards on
channel iron frames galv. iron wire to be not less than 1/8" diam-
eter, and mesh 1 x 1 1/2 diamond.

Those on coal windows to be hinged and to have pad-lock and
key. Everything requiring hardware to be neatly and substantially
fitted up. These goods shall all be "Reading" or those equally as
good. - for the boiler connection.

"PATENT PAVEMENT."

The supplies to the fixtures shall all be 5/8 lead extra heavy
The basement corridors, where marked, shall be paved with eith-
except the baptistry which shall be supplied by 1 1/2" diam. pipe
er Filbert's, Krauss's, or Jenkin's patent pavement, with 4" bottom,
and have stop cock for the control of the baptistry. This main
and 1" top and guaranteed. The outside pavement will not be in-
shall enter the baptistry by a nickel plated nozzle. The waste
cluded in this contract.

from the baptistry see "TILE & ETC." iron connected with the drain
and The 1st. story stair halls, and corridors, where marked on the
plans, to be paved with Mosaic tile to cost not less than \$1.00
per foot, and of a design approved by the Architect.

The interior of the baptistry is to be lined with glazed tile
of small size, (not over 2 x 6) and to have neat ornamental bands
top and bottom. The steps to this, both treads and risers, shall be
of Georgia Marble (Orpale) 1 1/4" thick, and rubbed on exposed sur-
face. This shall be guaranteed to be water tight.

for the use of the baptistry and stairs. without the heater.

The 1st. flights of stairs (main) are to be hoisted up on wrought

N. N. J.

Works

Dies for

JAPANESE

KER..

Alpha.

IES. Etc.

TIME:

ere will be

4 PARTIES.

ENT
ENT
ALT

3-

PA

S OF

E.

Georgia Marble rubbed where exposed. Iron brackets and pipe hangers 20 x 30 carried on only. Iron brackets and pipe hangers 1" thick. The string shall be of the Red Georgia Marble polished on exposed faces, and the skirting on the inside of the string to be 1" thick as well as the string slab. The newels shall also be of cast iron, and as per design. The half and quarter paces shall be of Creole Marble. The hand rail shall be oak and be 3 x 3 1/2 made fast to the iron hand rail. (See drawings.)----

"PLUMBING."

The main is to be brought to the curb by 1" extra heavy lead pipe, from a 3/4 ferrule and from thence to the toilet rooms and baptistry with 2" galv. iron with a stop cock where the main enters the basement. There shall be a T. and stop cock in this main for the boiler connection.

The supplies to the fixtures shall all be 5/8 lead extra heavy except the baptistry which shall be supplied by 1 1/4 galv. pipe, and have stop cock for the control of the baptistry. This main shall enter the baptistry by a nickel plated nozzle. The waste from the baptistry shall be 3" cast iron connected with the drain and properly trapped. The outlet to baptistry shall be nickel

The wash basins shall be countersunk marble top with back and side slabs 10" high large oval plain ivory tint basin with drain as far as possible. All exposed plumbing at baptistry to be nickel plated. The baptistry shall also be provided with an approved large size nickel plated X cocks of McCombridge make, for cold water heater. (This must be approved by the Architect) and be connected up with the main to the baptistry, and left in condition to be connected up with the steam heating apparatus. The heater shall be complete in every respect and have all the necessary cocks

The down outlets are all to be connected with the drains, and for the use of the baptistry either with or without the heater. All to be properly trapped and to have iron pins extending at

N. N. J.

Works

Dies for

WARRANTED

KER..

Alpha.

ES. Etc.

PRE.

own will be

FARTING.

ENT

NT

ALT

3

-PA.

OF

These shall all be properly supported on 20 x 36 carried on galv. iron brackets and pave patent com- shall all be of iron inside the building, and terra cotta from the presson bibbs, large size, for hot and cold water. This is to be building to the sewer, and sizes marked on the plan.

The areas where indicated are to have ball traps, connected into drain with Benner trap.

The water closets shall be as per plan, and shall be an approved

The work is all to be done strictly in accordance with the pattern "Front wash out" closet, with oak seats and lids and nickel fittings, and copper lined tanks complete, oak finish. Closets all by the said Board, and not mentioned in these specifications, or set on countersunk slate slabs. Supplies from tank to closets to shown in the drawings, shall be furnished by the contractor without be 1 1/4 lead all to be properly trapped and ventilated.

The soil pipes shall be 4" standard enlarging to 5" as the case may require, and carried through the roof.

"GAS FITTING."

The urinals shall be an approved porcelain lip syphon urinal and have 5/8 lead 2 1/2 lbs. supplies, with nickel plated cocks, let's left where desired. They shall be as follows: (approximately) McCambridge make. These urinals shall have slate drips properly subject to change:

connected with the drains by 1 1/4" lead wastes trapped with Benner traps. The wastes from the urinals also to be 1 1/4 lead trapped as above. These shall also have back and side slabs of slate 6ft., high by 1'-6" wide.

The wash basins shall be countersunk marble top with back and side slabs 10" high large oval plain ivory tint basin with chain and plug and all carried on nickel plated brackets. These shall have large size nickel plated X cocks of McCambridge make, for cold water only. The two robing rooms are to be provided with drips, (sizes shown on the drawings,) and lined with 4 lb. lead and trapped into drain with Benner trap. Waste to be 1 1/2 lead.

The down spouts are all to be connected with the drains, and

N. N. J.

Works

lies for

APARTMENT

CE R..

lphia.

ES. Etc.

IRE.

TH WILL BE

FARTIES.

ENT
NT
ILT
3
PA.
OF

shall all be of iron inside the building, and terra cotta from the building to the sewer, and sizes marked on the plan.

The areas where indicated are to have ball traps, connected with the drain.

The work is all to be done strictly in accordance with the rules and regulations of the Board of Health, and anything required by the said Board, and not mentioned in these specifications, or shown on the drawings, shall be furnished by the contractor without additional cost to the church, including all piers or hangers, for the support of the drains.-----

"GAS FITTING."

The gas pipe shall be run according to Gas Co's rules, and outlets left where desired. They shall be as follows: (approximately) subject to change:-----

Cellar -----2	Dining room-----12
Kitchen-----3	Boiler room-----2
All store rooms-----1 each.	Corridors--(Basement)3
Robing room-----1	Stairs to robing room-1
Toilet rooms-----1 each.	First floor-----
Corridors-----8	Lecture rooms-----9
Main Auditorium-----25--one in centre of ceiling if desired.	
2nd. floor---gallery Main auditorium-----4	
S.S. Room-----1 each, to each bay under gallery.	
2 in front wall under gallery.	
1 each corridor,	
1 over each of these in the gallery.	
1 outlet to each post on S.S. floor.	

N. N. J.

Works

Dies for

s

YAPANESE

KEB..

Alpha.

IES, Etc.

TIME.

ers will be

PARTIES.

ENT

ENT

ALT

3

PA.

S OF

E.

Robing room 2nd., story and pastor's room 1st., floor and all toilet rooms, passageways, and etc., to be provided with the necessary outlets.

This list is approximate only, and is subject to change.

The mains shall be so run that the -Basement, Main Auditorium, Central Chandeliers (Main Auditorium) 1st., floor rooms, and corridors, second story S.S. rooms, and gallery. Pulpit lights, shall all be separately controlled, and have cocks located in convenient places.-----

N. N. J.

Works

lies for

WARRANTED

KER..

elphia.

ES. Etc.

THE

WILL BE

PARTIES.

ENT

NT

ALT

3

PA.

The contractor is to provide all appliances, scaffolds and etc., of every description, necessary to properly execute, and erect the work and protect the same during construction.

All structural shapes, such as beams, channels, angles, plates, and etc., to be of medium steel.

Cast bases under columns, are to be set perfectly true, and level, and all surfaces in contact with steel, shall be milled and finished perpendicular to axis.

Columns of rolled steel are to be made in lengths not over two stories in height, and spliced so as to develop full strength of columns.

Columns H are to have cast bases 12" high 27" square, of 1 1/4" metal.

Cols. HH to have steel angle, and plate bases 20" square.

Cols. J to have steel angle, and plate bases 12" square.

Cols. K to have steel angle and plate bases 12" square.

Cols. M & MM to have cast bases 12" high 24" sq. 1 1/4" metal.

Cols. N. & NN to have cast bases 12" high 30" sq. 1 1/2" metal.

Cols. N. & NN are to have each a steel bracket 36" along each side, to be rivetted to under side of box girder N, NN when erected.

Cols. N. & NN and M & MM are to have brackets for girders J & K

Cols. H & HH are to have caps spread to carry girders under lower walls, and are to be rivetted to them. These columns to have holes for 3/4" stone anchors, every 4ft., and to be anchored to the walls.

All columns resting on cast bases, to be firmly bolted to them and all bases cast or wrought to be bolted to foundation cap stones

N. J.

orks

ies for

WARRANTED

KER..

elphia.

ES. Etc.

THE

ers will be

PARTIES.

ENT
NT
OLT

3-
PA.
OF

resting on them. Foot of columns to rest on cast bases bolted to foundation as in case of wrought steel cols. All cast cols. are to be bolted to each other, and to beams, girders, etc., where required. All ends to be faced to insure good bearing.

GIRDERS BEAMS ETC.-----To be made of Medium steel. All beams and girders, where they rest on walls, are to be provided with suitable wall plates, and Spear anchors.

All angles and cover plates in girders, are to be in one length no splice being allowed. In all cases where cols. either of wood, or metal, rest on girders, the stiffeners on girder directly below col., are to be framed as to touch the upper flanges of girder and support it.

Where girders rest on cols., the stiffeners directly over the cols. are to touch, and support the lower flanges of girder.

All girders are to be provided with stiffeners at proper intervals.

In all cases where joist head into beams or girders, rivet on a 3" x 3" x 3/8" shelf angle, as on girders marked R, J, K, and etc.

All beams and girders to be punched in webs for good lagging, unless otherwise mentioned.

Flanges of beams shall not be cut, punched, or drilled, except at or near ends, for connections, unless size of beam be increased to allow for loss of flange metal, caused by such cutting, punching, or drilling. All connections to beams must be by the web. Cast iron separators between beams forming girders must fit accurately and be firmly bolted. All connections between rolled steel members to be by 3/4" or 7/8" rivets, and connections between rolled steel members, and cast iron cols. with bolts.-----

N. J.

orks

les for

WARRANTED

KER..

Alphia.

ES, Etc.

IRE.

ers will be

PARTIES.

ENT
NT
LT
PA.
OF

painted two coats before parts are assembled.

After iron and steel work is built in position, and just previous to the building of the walls and floors or other permanent covering, it is to be thoroughly painted with one (1) good coat of red lead and linseed oil, well laid on. All bolts and nuts and etc., or any iron or steel surfaces from which the paint may have been removed in putting the work in place, are to be painted as above --- two coats.-----

"ROOF TRUSSES."

Make four roof trusses marked M MM. N & NN rights and lefts. Wall ends of trusses to be provided with suitable wall plates and to be anchored to walls, each truss with two 1 1/4" diam. anchor bolts. The other ends of trusses to be rivetted to cols. M MM N & NN respectively.

Trusses are to be made of angles, each member of two angles rivetted longer legs back to back, every 12" and separated by 11/16 washers. All members to be connected to each other by 11/16" gusset plates. All joints to develop full strength of members.

All rivets for these trusses are to be 7/8 diam.

Suitable connections are to be provided for all secondary frame roof trusses, valleys, rafters and etc., as shown on general roof plan. On trusses MM & M top cord from A to C to have open holes at intervals for lapping to frame studs into for cheek walls, resting on A C.-----

"SUNDRY ITEMS."

Contractor for iron and steel work is to furnish and have on the ground all the necessary foundation bolts and washers and in

N. J.

orks

es for

ATAMTED

IER..

Alpha.

ES, Etc.

THE
re will be

PARTIES.

ENT
NT
LT
PA
OF

framed into two octagons; joints of octagon strongly spliced through web.-----

2 beams	mark D ₁ ---	10" I 25 lbs.	-----	14'-4" long.
2 beams	mark E---	10" I 25 lbs.	-----	14'-2" "
2 beams	mark F ₁ ---	10" I 25 lbs.	-----	13'-4" "
2 beams	mark G ₁ ---	15" I 50 lbs.	-----	17'-0" "
2 beams	mark T ₁ ---	10" I 25 lbs.	-----	16'-0" "
2 beams	mark I ₁ ---	10" I 25 lbs.	-----	13'-0" "
2 beams	mark S ₁ ---	10" I 25 lbs.	-----	12'-6" "
2 girders	mark C ₂ --	2-12" I's 32 lbs.--with saps.	-----	17'-8" "
1 girder	mark G ₂ --	2-12" I's 32 lbs.--with saps.	-----	16'-0" "
2 beams	mark H ₂ ---	12" I's 32 lbs.	-----	8'-0" "
2 girders	mark J ₂ --	3-12" I's 32 lbs.--with saps. 16" wide	-----	7'-6" "
2 girders	mark K ₂ --	3-10" I's 25 lbs.--with saps. 18" wide	-----	7'-9" "
2 beams	mark L ₂ ---	10" I 25 lbs.	-----	14'-0" "
1 beam	mark O ₂ ---	15" I 50 lbs.	-----	25'-0" "
2 girders	mark P ₂ --	3-12" I 32 lbs.--with saps. 24" wide	-----	14'-6" "
2 beams	mark S ₂ ---	10" I 25 lbs.	-----	12'-6" "
2 beams	mark S ₂ ---	10" I 25 lbs.	-----	12'-6" "

4 girders marked R₂ made up as follows:-----

1 web	30" x 3/8"	-----	33'-0" "
2 flanges	each 5" x 3 1/2" x 1/2" L's	-----	33'-0" "
1 cov. pl.	12 1/2" x 5/8"	-----	24'-0" "
1 cov. pl.	12 1/2" x 5/8"	-----	15'-0" "

1 girder marked N- NN made up as follows:-----

2 webs	48" x 7/16"	-----	34'-0" "
--------	-------------	-------	----------

, Sec'y.

, N. J.

orks

ies for

GUARANTEED

KER..

Philadelphia.

CIES, Etc.

SHINE

orders will be

and PARTIES.

ST.

PATENT

1 cov. pl. 15" x 5/8"-----27'-0" "

1 cov. pl. 15" x 5/8"-----19'-0" "

3" x 3" x 3/8" shelf angle to carry joist.

"CAST IRON COLUMNS."

4 cols. marked B₁---8" diam. 1 1/8" metal-----13'-0" "

2 cols. marked C₁---6" diam. 3/4" metal-----11'-9" "

1 col. marked F₁---6" diam. 3/4" metal-----12'-0" "

4 cols. marked B₂---8" diam. 3/4" metal-----12'-6" "

2 cols. marked D₂---6" diam. 3/4" metal-----14'-0" "

4 cols. marked E₂---6" diam. 3/4" metal-----11'-0" "

2 cols. marked D₃---6" diam. 3/4" metal-----10'-0" "

Cols. E₂ & C₁ have ornamental caps and bases (see sections.)

"BUILT STEEL COLUMNS."

2 cols. mark H {2--12" L's 20 lbs.
2--12" x 3/8" pls.} -----56'-0" long in 2 sect's.

2 cols. mark HH--2--12" L's 20 lbs. latticed 56'-0" long, in 2 sects.

2 cols. mark J---10" I 25 lbs.-----27'-0" long.

2 cols. mark K---10" I 25 lbs.-----12'-6" "

1 col. mark M₂ {1--12" x 5/16" plate
4--3" x 3 1/2" x 5/16" L's}-----21'-0" "

1 col. mark M₁ {1--12" x 3/8" plate
4--5" x 3" x 3/8" L's}-----31'-0" "

1 col. mark MM₂ same section and length as M₂.

1 col. mark MM₁ same section and length as M₁.

1 col. mark N₂ {1--12" x 5/16" plate
4--3" x 3 1/2" x 5/16" L's}-----21'-0" "

1 col. mark N₁ {2--12" L's 25 lbs.
2--15" x 1/2" plates}-----27'-0" "

1 col. mark NN₁ same section and length as N₂.

N. N. J.

Works

Dies for
s

JAPANESE

KER..

Alpha.

ES, Etc.

IREL.
SPE WILL BE

PARTIES.

ENT
ENT
ALT

3
PA.
OF