



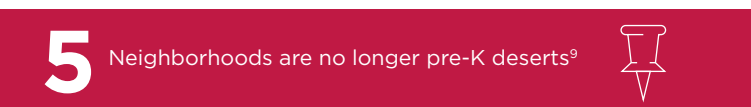
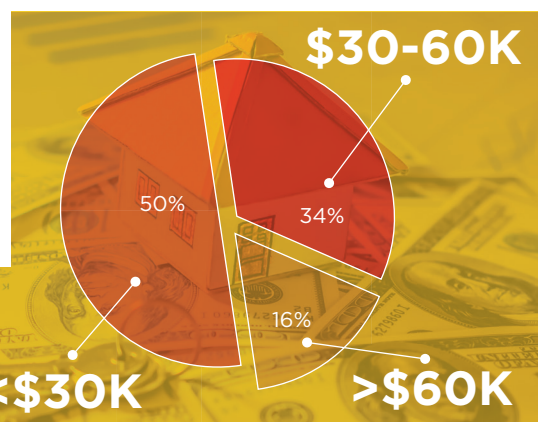
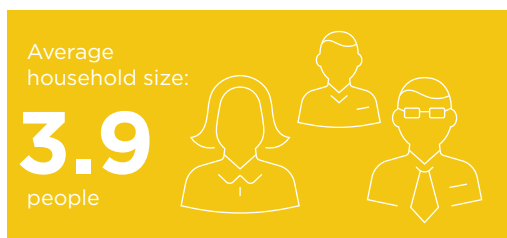
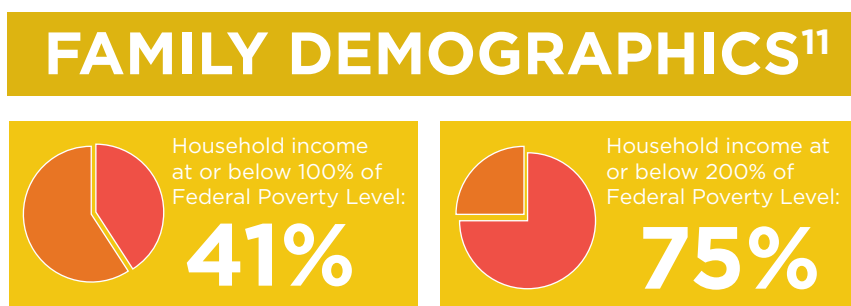
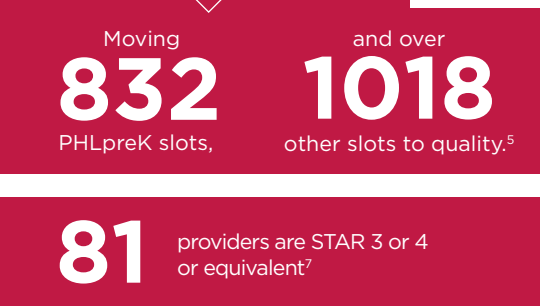
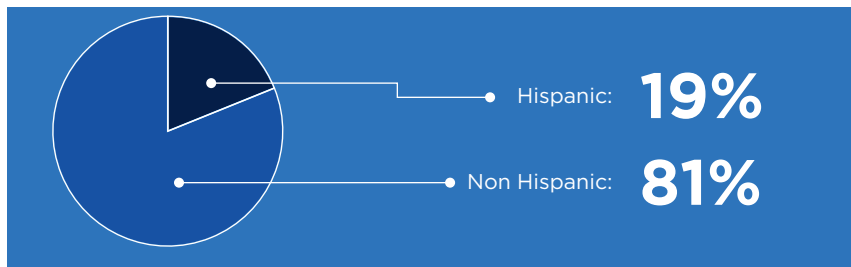
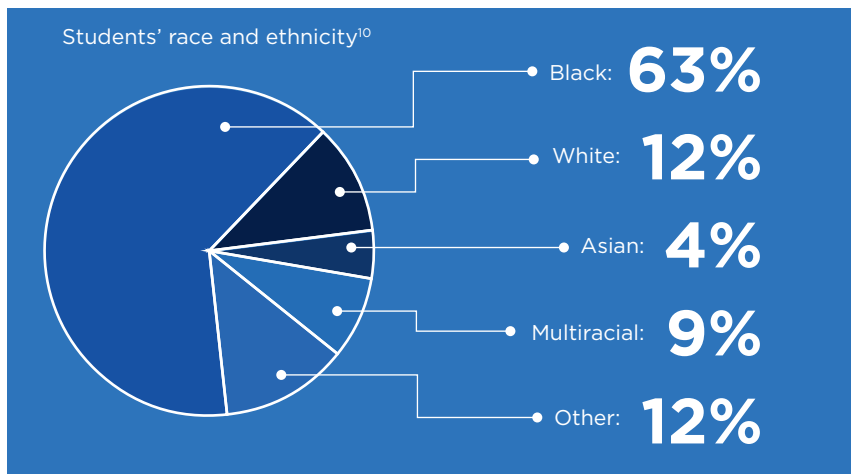
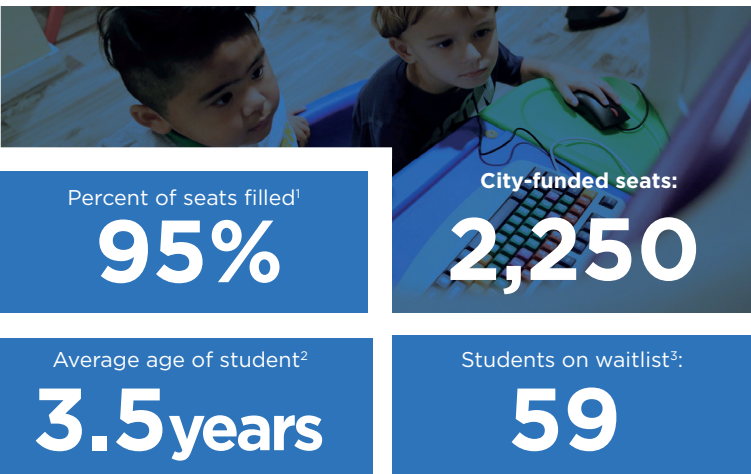
Mayor's Office of Education

PHLpreK

BY THE NUMBERS

JANUARY 2019

ENROLLMENT



¹ As of December 18, 2018.

² Based on parent/caregiver applications for the 2018-2019 school year. Provided by Public Health Management Corporation (PHMC) in October 2018.

³ As of November 7, 2018.

⁴ Since the beginning of PHLpreK. As reported by the Southeast Regional Key, December 2018.

⁵ Based on licensed capacity of PHLpreK providers and Fall 2018 PHLpreK slot allocations.

⁶ Self-reported in providers' FY 2019 Continuation Applications.

⁷ As reported by the Southeast Regional Key, December 2018

⁸ Provided by PHMC in Fall 2018.

⁹ As defined in March 2017 by the Data Management Office, Office of the Deputy Managing Director of Health and Human Services and Penn Child Research Center (University of Pennsylvania Graduate School of Education).

¹⁰ Based on parent/caregiver applications for the 2018-2019 school year. Provided by PHMC in October 2018.

¹¹ Based on parent/caregiver applications for the 2018-2019 school year. Provided by PHMC in October 2018.



Mayor's Office of Education



PHLpreK

BY THE NUMBERS

JANUARY 2019

PHLpreK WORKFORCE



New PHLpreK positions¹²:

278

PHLpreK teachers¹³:

241



PHLpreK staff participating
in continuing education and
professional development¹⁴:

132

Educators at
PHLpreK centers
participating in
TEACH¹⁵:



51

PARENT AND CAREGIVER FEEDBACK¹⁶

Parents satisfied with
enrollment process



96%

Parents would recommend
PHLpreK
to other parents

99%



Parents satisfied with
teacher quality

95%



Parents report child is
better prepared for
kindergarten

96%



Mayor's Office of
Education

CITY OF PHILADELPHIA

¹² As of December 2018. Self-reported by providers. Includes teaching, administrative, and support staff positions created since the beginning of PHLpreK.

¹³ During 2018-2019 school year. Provided by PHMC in October 2018. Includes 122 lead and 119 assistant teachers.

¹⁴ Provided by PHMC in October 2018.

¹⁵ Provided by Pennsylvania Child Care Association in October 2018.

¹⁶ Based on 289 responses to the 2017-2018 parent and caregiver survey.