

Table 1: Wage Tax by Industry- October

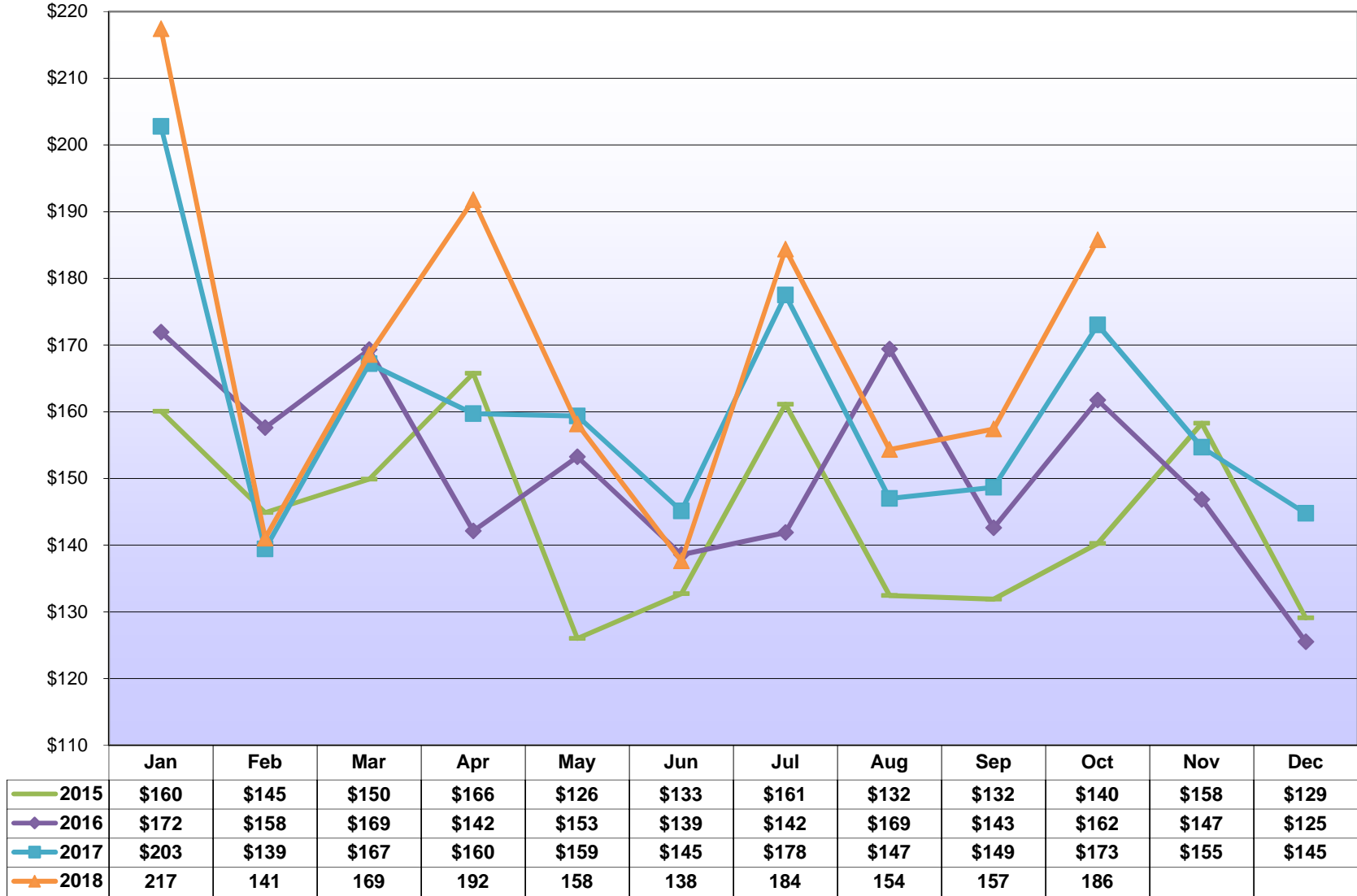
City of Philadelphia Revenue Department

NAICS Sector / Industry Group	Oct 2018	Oct 2017	Oct 2016	Oct 2015	12-Month Growth Rate (Oct - Oct)			3-Yr Annualized (October 18-15)	Difference (October 18-17)
					2018	2017	2016		
<b>Construction</b>	7,328,829	6,473,342	6,180,783	5,175,532	13.2%	4.7%	19.4%	12.3%	855,487
<b>Manufacturing (includes headquarter offices &amp; factories)</b>	10,444,588	9,633,153	10,446,566	7,695,885	8.4%	-7.8%	35.7%	10.7%	811,435
<i>Chemicals, Petroleum Refining</i>	1,598,198	1,217,453	1,596,520	1,395,743	31.3%	-23.7%	14.4%	4.6%	380,744
<i>Pharmaceuticals</i>	2,048,595	1,983,234	2,055,035	1,255,410	3.3%	-3.5%	63.7%	17.7%	65,361
<i>Transportation Equipment</i>	1,074,300	787,838	951,317	821,555	36.4%	-17.2%	15.8%	9.4%	286,462
<i>Food &amp; Beverage Products</i>	1,533,497	1,713,047	1,855,005	1,179,089	-10.5%	-7.7%	57.3%	9.2%	(179,550)
<i>Machinery, Electronic, and Other Electric Equipment</i>	1,023,741	925,890	916,304	817,008	10.6%	1.0%	12.2%	7.8%	97,851
<i>Metal Manufacturing</i>	826,298	788,779	759,370	627,689	4.8%	3.9%	21.0%	9.6%	37,519
<i>Miscellaneous Manufacturing</i>	2,339,959	2,216,912	2,313,013	1,599,393	5.6%	-4.2%	44.6%	13.5%	123,047
<b>Public Utilities</b>	896,949	1,051,009	1,070,879	886,465	-14.7%	-1.9%	20.8%	0.4%	(154,060)
<b>Transportation and Warehousing</b>	6,632,908	5,517,642	5,345,613	4,243,128	20.2%	3.2%	26.0%	16.1%	1,115,266
<b>Telecommunication</b>	4,746,158	3,065,759	2,839,560	2,399,791	54.8%	8.0%	18.3%	25.5%	1,680,400
<b>Publishing, Broadcasting, and Other Information</b>	2,716,154	2,280,655	2,143,094	1,779,894	19.1%	6.4%	20.4%	15.1%	435,499
<b>Wholesale Trade</b>	4,361,918	4,392,208	4,361,333	2,831,744	-0.7%	0.7%	54.0%	15.5%	(30,290)
<b>Retail Trade</b>	9,739,478	8,902,703	8,515,086	6,326,078	9.4%	4.6%	34.6%	15.5%	836,776
<b>Banking &amp; Credit Unions</b>	3,466,609	2,885,852	3,059,752	2,367,338	20.1%	-5.7%	29.2%	13.6%	580,756
<b>Securities / Financial Investments</b>	3,260,389	3,112,655	3,250,566	2,805,798	4.7%	-4.2%	15.9%	5.1%	147,734
<b>Insurance</b>	5,547,085	5,135,258	4,674,193	4,663,797	8.0%	9.9%	0.2%	6.0%	411,827
<b>Real Estate, Rental and Leasing</b>	3,009,984	2,770,124	2,712,542	1,909,474	8.7%	2.1%	42.1%	16.4%	239,859
<b>Health and Social Services</b>	43,824,567	36,931,053	33,543,207	28,815,719	18.7%	10.1%	16.4%	15.0%	6,893,514
<i>Hospitals</i>	22,239,475	18,402,053	16,348,905	16,182,490	20.9%	12.6%	1.0%	11.2%	3,837,422
<i>Doctors, Dentists, and Other Health Practitioners</i>	5,036,389	4,524,996	4,422,918	3,234,346	11.3%	2.3%	36.7%	15.9%	511,393
<i>Outpatient Care Centers and Other Health Services</i>	7,287,192	6,072,221	5,473,960	4,138,846	20.0%	10.9%	32.3%	20.8%	1,214,971
<i>Nursing &amp; Personal Care Facilities</i>	4,297,661	3,791,274	3,767,412	2,861,003	13.4%	0.6%	31.7%	14.5%	506,387
<i>Social Services</i>	4,963,850	4,140,509	3,530,012	2,399,033	19.9%	17.3%	47.1%	27.4%	823,342
<b>Education</b>	14,041,081	15,745,709	15,886,716	14,241,389	-10.8%	-0.9%	11.6%	-0.5%	(1,704,628)
<i>College and Universities</i>	10,131,141	12,049,261	12,251,600	11,453,872	-15.9%	-1.7%	7.0%	-4.0%	(1,918,120)
<i>Elementary, Secondary Schools (except public schools)</i>	2,707,319	2,472,805	2,436,082	1,838,521	9.5%	1.5%	32.5%	13.8%	234,514
<i>Other Educational Services</i>	1,202,620	1,223,643	1,199,034	948,996	-1.7%	2.1%	26.3%	8.2%	(21,023)
<b>Professional Services</b>	22,522,062	21,390,178	20,237,825	14,029,048	5.3%	5.7%	44.3%	17.1%	1,131,884
<i>Legal Services</i>	6,283,531	5,881,694	5,700,784	4,524,360	6.8%	3.2%	26.5%	11.6%	401,837
<i>Management Consulting</i>	4,351,664	4,027,263	3,916,996	2,533,422	8.1%	2.8%	54.6%	19.8%	324,401
<i>Engineering &amp; Architectural Services</i>	2,377,793	2,269,209	2,264,747	1,548,358	4.8%	0.2%	46.3%	15.4%	108,584
<i>Computer</i>	2,161,769	2,004,574	1,887,726	1,239,810	7.8%	6.2%	52.3%	20.4%	157,196
<i>Accounting, Auditing, Bookkeeping</i>	3,117,258	2,862,938	2,694,928	2,076,037	8.9%	6.2%	29.8%	14.5%	254,320
<i>Advertising and Other Professional Services</i>	4,230,047	4,344,501	3,772,645	2,107,061	-2.6%	15.2%	79.0%	26.2%	(114,454)
<b>Hotels</b>	1,282,486	982,543	960,644	842,872	30.5%	2.3%	14.0%	15.0%	299,942
<b>Restaurants</b>	5,778,209	5,356,232	5,007,616	3,719,940	7.9%	7.0%	34.6%	15.8%	421,978
<b>Sport Teams</b>	2,497,675	2,295,655	2,070,043	1,808,286	8.8%	10.9%	14.5%	11.4%	202,020
<b>Arts, Entertainment, and Other Recreation</b>	1,667,022	1,500,393	1,572,137	960,206	11.1%	-4.6%	63.7%	20.2%	166,629
<b>Other Sectors</b>	15,262,462	14,787,081	13,949,325	9,499,338	3.2%	6.0%	46.8%	17.1%	475,381
<i>Membership Organizations</i>	4,205,072	4,090,586	4,017,540	2,755,485	2.8%	1.8%	45.8%	15.1%	114,486
<i>Employment/Outsourcing Agencies</i>	3,313,283	2,947,777	2,754,977	2,237,455	12.4%	7.0%	23.1%	14.0%	365,506
<i>Security and Investigation Services</i>	801,622	834,078	900,233	672,698	-3.9%	-7.3%	33.8%	6.0%	(32,456)
<i>Services to Buildings</i>	1,211,442	1,277,950	1,225,892	876,425	-5.2%	4.2%	39.9%	11.4%	(66,509)
<i>Miscellaneous Sectors</i>	5,731,044	5,636,689	5,050,683	2,957,275	1.7%	11.6%	<b>70.8%</b>	24.7%	94,355
<b>Government</b>	16,394,968	18,581,423	13,721,965	23,157,622	-11.8%	35.4%	-40.7%	-10.9%	(2,186,455)
<i>State Government (PA)</i>	1,029,521	1,188,589	1,170,922	924,070	-13.4%	1.5%	26.7%	3.7%	(159,068)
<i>City, School District, Local Quasi Govt.</i>	9,990,085	11,980,506	9,087,381	9,280,231	-16.6%	31.8%	-2.1%	2.5%	(1,990,420)
<i>Federal Government (includes US Post Office)</i>	5,111,490	5,175,750	3,211,082	12,777,645	<b>-1.2%</b>	61.2%	<b>-74.9%</b>	-26.3%	(64,260)
<i>Other Governments</i>	263,871	236,579	252,580	175,676	11.5%	-6.3%	43.8%	14.5%	27,292
<b>Unclassified Accounts</b>	347,878	321,466	202,294	104,832	<b>8.2%</b>	58.9%	<b>93.0%</b>	49.2%	26,412
<b>Total from Taxpayer Database (TIPS)</b>	<b>\$185,769,460</b>	<b>\$173,112,094</b>	<b>\$161,751,739</b>	<b>\$140,264,177</b>	7.3%	7.0%	15.3%	9.8%	<b>\$12,657,366</b>
<b>Total from City's Accounting System (FAMIS)</b>	<b>\$185,959,184</b>	<b>\$173,028,056</b>	<b>\$161,600,342</b>	<b>\$140,201,724</b>	7.5%	7.1%	15.3%	9.9%	<b>\$12,931,128</b>

# Total PICA & City Wage Tax - Monthly

City of Philadelphia Revenue Department

(In Millions of Dollars)



Source: TIPS

Table 2: Wage Tax by Industry- Fiscal Year to Date (July thru October)

City of Philadelphia Revenue Department

NAICS Sector / Industry Group	FYTD 2019	FYTD 2018	FYTD 2017	FYTD 2016	FYTD Growth Rate (Jul - Oct)			3-Yr Annualized (FYTD 19-16)	Difference (FYTD 19-18)
					2019	2018	2017		
<b>Construction</b>	25,430,279	23,727,125	22,454,434	21,132,601	7.2%	5.7%	6.3%	6.4%	1,703,154
<b>Manufacturing (includes headquarter offices &amp; factories)</b>	37,677,665	35,318,597	35,410,004	33,946,957	6.7%	-0.3%	4.3%	3.5%	2,359,067
<i>Chemicals, Petroleum Refining</i>	6,474,404	5,618,027	5,784,343	5,909,971	15.2%	-2.9%	-2.1%	3.1%	856,377
<i>Pharmaceuticals</i>	6,978,921	6,751,902	6,759,890	6,219,713	3.4%	-0.1%	8.7%	3.9%	227,019
<i>Transportation Equipment</i>	3,324,739	3,287,889	3,671,854	3,575,228	1.1%	-10.5%	2.7%	-2.4%	36,850
<i>Food &amp; Beverage Products</i>	5,459,199	5,625,614	5,644,098	5,039,737	-3.0%	-0.3%	12.0%	2.7%	(166,416)
<i>Machinery, Electronic, and Other Electric Equipment</i>	3,401,606	3,142,525	2,976,522	3,018,500	8.2%	5.6%	-1.4%	4.1%	259,081
<i>Metal Manufacturing</i>	3,488,025	2,974,416	2,810,690	2,658,653	17.3%	5.8%	5.7%	9.5%	513,609
<i>Miscellaneous Manufacturing</i>	8,550,771	7,918,224	7,762,607	7,525,156	8.0%	2.0%	3.2%	4.4%	632,547
<b>Public Utilities</b>	4,129,247	4,422,127	4,224,463	3,895,964	-6.6%	4.7%	8.4%	2.0%	(292,879)
<b>Transportation and Warehousing</b>	23,665,358	21,060,869	19,945,682	19,484,444	12.4%	5.6%	2.4%	6.7%	2,604,489
<b>Telecommunication</b>	15,160,773	12,590,788	12,084,115	11,394,666	20.4%	4.2%	6.1%	10.0%	2,569,985
<b>Publishing, Broadcasting, and Other Information</b>	8,936,091	7,991,357	7,286,562	7,467,033	11.8%	9.7%	-2.4%	6.2%	944,734
<b>Wholesale Trade</b>	15,235,435	15,105,616	14,536,049	12,738,416	0.9%	3.9%	14.1%	6.1%	129,820
<b>Retail Trade</b>	32,920,460	30,923,504	29,760,027	27,094,471	6.5%	3.9%	9.8%	6.7%	1,996,956
<b>Banking &amp; Credit Unions</b>	11,986,121	11,191,548	11,280,527	10,801,265	7.1%	-0.8%	4.4%	3.5%	794,573
<b>Securities / Financial Investments</b>	14,537,449	15,049,319	13,281,241	13,061,350	-3.4%	13.3%	1.7%	3.6%	(511,871)
<b>Insurance</b>	19,924,432	18,777,913	18,632,533	20,045,695	6.1%	0.8%	-7.0%	-0.2%	1,146,519
<b>Real Estate, Rental and Leasing</b>	10,181,646	9,805,491	9,326,813	7,999,447	3.8%	5.1%	16.6%	8.4%	376,155
<b>Health and Social Services</b>	150,054,523	133,539,487	127,789,776	118,344,063	12.4%	4.5%	8.0%	8.2%	16,515,036
<i>Hospitals</i>	76,420,830	67,891,420	66,303,509	64,464,547	12.6%	2.4%	2.9%	5.8%	8,529,410
<i>Doctors, Dentists, and Other Health Practitioners</i>	16,821,450	15,989,201	15,749,907	14,114,314	5.2%	1.5%	11.6%	6.0%	832,249
<i>Outpatient Care Centers and Other Health Services</i>	24,613,822	21,342,929	19,992,368	17,258,434	15.3%	6.8%	15.8%	12.6%	3,270,893
<i>Nursing &amp; Personal Care Facilities</i>	14,887,950	13,762,564	13,169,625	11,865,718	8.2%	4.5%	11.0%	7.9%	1,125,385
<i>Social Services</i>	17,310,471	14,553,373	12,574,366	10,641,050	18.9%	15.7%	18.2%	17.6%	2,757,098
<b>Education</b>	61,596,899	61,687,394	60,398,587	57,720,999	-0.1%	2.1%	4.6%	2.2%	(90,495)
<i>College and Universities</i>	47,609,371	48,515,667	47,603,412	45,506,419	-1.9%	1.9%	4.6%	1.5%	(906,296)
<i>Elementary, Secondary Schools (except public schools)</i>	9,613,993	9,029,079	8,661,944	8,357,946	6.5%	4.2%	3.6%	4.8%	584,913
<i>Other Educational Services</i>	4,373,536	4,142,648	4,133,231	3,856,634	5.6%	0.2%	7.2%	4.3%	230,888
<b>Professional Services</b>	76,541,378	72,186,896	68,071,467	60,116,769	6.0%	6.0%	13.2%	8.4%	4,354,482
<i>Legal Services</i>	23,039,731	22,639,597	20,857,737	19,660,640	1.8%	8.5%	6.1%	5.4%	400,134
<i>Management Consulting</i>	14,788,833	13,406,288	13,007,323	11,809,728	10.3%	3.1%	10.1%	7.8%	1,382,545
<i>Engineering &amp; Architectural Services</i>	8,430,487	7,785,001	7,651,781	6,670,970	8.3%	1.7%	14.7%	8.1%	645,486
<i>Computer</i>	7,233,530	6,668,885	6,144,437	5,354,804	8.5%	8.5%	14.7%	10.5%	564,644
<i>Accounting, Auditing, Bookkeeping</i>	9,080,290	8,875,437	8,503,606	7,325,531	2.3%	4.4%	16.1%	7.4%	204,853
<i>Advertising and Other Professional Services</i>	13,968,508	12,811,688	11,906,584	9,295,096	9.0%	7.6%	28.1%	14.5%	1,156,820
<b>Hotels</b>	4,238,359	3,770,356	3,831,310	3,409,420	12.4%	-1.6%	12.4%	7.5%	468,003
<b>Restaurants</b>	19,508,665	18,540,949	17,580,034	15,785,967	5.2%	5.5%	11.4%	7.3%	967,716
<b>Sport Teams</b>	7,815,453	7,337,844	7,940,471	6,668,796	6.5%	-7.6%	19.1%	5.4%	477,609
<b>Arts, Entertainment, and Other Recreation</b>	5,547,427	5,220,271	5,206,881	4,236,122	6.3%	0.3%	22.9%	9.4%	327,156
<b>Other Sectors</b>	52,093,940	50,348,379	46,799,689	40,349,009	3.5%	7.6%	16.0%	8.9%	1,745,561
<i>Membership Organizations</i>	14,359,880	13,757,547	13,441,752	11,650,826	4.4%	2.3%	15.4%	7.2%	602,333
<i>Employment/Outsourcing Agencies</i>	11,591,564	11,509,638	9,702,518	9,225,423	0.7%	18.6%	5.2%	7.9%	81,926
<i>Security and Investigation Services</i>	3,180,413	3,200,675	3,194,592	2,796,347	-0.6%	0.2%	14.2%	4.4%	(20,262)
<i>Services to Buildings</i>	4,102,747	4,416,593	4,295,295	3,976,728	-7.1%	2.8%	8.0%	1.0%	(313,846)
<i>Miscellaneous Sectors</i>	18,859,336	17,463,926	16,165,532	12,699,885	8.0%	8.0%	27.3%	14.1%	1,395,410
<b>Government</b>	83,892,179	87,172,935	79,155,921	69,529,288	-3.8%	10.1%	13.8%	6.5%	(3,280,756)
<i>State Government (PA)</i>	4,505,881	4,388,907	4,205,511	3,929,368	2.7%	4.4%	7.0%	4.7%	116,974
<i>City, School District, Local Quasi Govt.</i>	43,290,264	46,410,085	39,898,872	39,186,143	-6.7%	16.3%	1.8%	3.4%	(3,119,821)
<i>Federal Government (includes US Post Office)</i>	35,210,919	35,546,687	34,224,407	25,669,824	<b>-0.9%</b>	3.9%	33.3%	11.1%	(335,768)
<i>Other Governments</i>	885,115	827,257	827,132	743,953	7.0%	0.0%	11.2%	6.0%	57,858
<b>Unclassified Accounts</b>	1,022,738	917,387	602,184	494,500	11.5%	52.3%	21.8%	27.4%	105,351
<b>Total from Taxpayer Database (TIPS)</b>	<b>\$682,096,518</b>	<b>\$646,686,153</b>	<b>\$615,598,771</b>	<b>\$565,717,241</b>	5.5%	5.0%	8.8%	6.4%	<b>\$35,410,365</b>
<b>Total from City's Accounting System (FAMIS)</b>	<b>\$682,711,615</b>	<b>\$646,594,118</b>	<b>\$615,496,911</b>	<b>\$565,045,798</b>	5.6%	5.1%	8.9%	6.5%	<b>\$36,117,497</b>

Table 3: Wage Tax by Industry- Calendar Year to Date (January thru October)

City of Philadelphia Revenue Department

NAICS Sector / Industry Group	CYTD 2018	CYTD 2017	CYTD 2016	CYTD 2015	CYTD Growth Rate (Jan - Oct)			3-Yr Annualized (CYTD 18-15)	Difference (CYTD 18-17)
					2018	2017	2016		
<b>Construction</b>	59,042,798	57,210,601	54,887,549	48,337,029	3.2%	4.2%	13.6%	6.9%	1,832,197
<b>Manufacturing (includes headquarter offices &amp; factories)</b>	98,850,523	96,440,549	96,611,997	93,700,967	2.5%	-0.2%	3.1%	1.8%	2,409,975
<i>Chemicals, Petroleum Refining</i>	19,112,407	17,864,571	17,779,067	17,613,971	7.0%	0.5%	0.9%	2.8%	1,247,836
<i>Pharmaceuticals</i>	20,540,385	20,416,623	20,611,528	20,398,029	0.6%	-0.9%	1.0%	0.2%	123,761
<i>Transportation Equipment</i>	8,328,575	8,861,940	9,442,675	8,839,418	-6.0%	-6.2%	6.8%	-2.0%	(533,365)
<i>Food &amp; Beverage Products</i>	13,621,579	13,881,020	13,517,006	12,625,511	-1.9%	2.7%	7.1%	2.6%	(259,441)
<i>Machinery, Electronic, and Other Electric Equipment</i>	8,057,997	7,802,091	7,508,223	7,598,634	3.3%	3.9%	-1.2%	2.0%	255,906
<i>Metal Manufacturing</i>	8,325,820	7,886,229	7,808,095	7,114,145	5.6%	1.0%	9.8%	5.4%	439,591
<i>Miscellaneous Manufacturing</i>	20,863,760	19,728,074	19,945,404	19,511,259	5.8%	-1.1%	2.2%	2.3%	1,135,686
<b>Public Utilities</b>	12,439,870	12,441,189	11,798,729	10,842,984	0.0%	5.4%	8.8%	4.7%	(1,319)
<b>Transportation and Warehousing</b>	57,864,684	52,560,928	50,695,354	48,394,729	10.1%	3.7%	4.8%	6.1%	5,303,757
<b>Telecommunication</b>	45,316,656	44,046,413	38,734,309	34,951,343	2.9%	13.7%	10.8%	9.0%	1,270,244
<b>Publishing, Broadcasting, and Other Information</b>	21,903,006	19,599,839	19,002,455	19,797,911	11.8%	3.1%	-4.0%	3.4%	2,303,167
<b>Wholesale Trade</b>	37,935,560	37,731,522	36,273,087	33,161,117	0.5%	4.0%	9.4%	4.6%	204,038
<b>Retail Trade</b>	81,122,215	76,762,377	75,506,112	69,938,729	5.7%	1.7%	8.0%	5.1%	4,359,838
<b>Banking &amp; Credit Unions</b>	34,220,108	34,184,432	32,131,185	31,069,359	0.1%	6.4%	3.4%	3.3%	35,677
<b>Securities / Financial Investments</b>	48,167,859	47,262,410	44,488,649	45,491,183	1.9%	6.2%	-2.2%	1.9%	905,449
<b>Insurance</b>	58,361,611	55,195,019	55,933,755	53,800,936	5.7%	-1.3%	4.0%	2.7%	3,166,592
<b>Real Estate, Rental and Leasing</b>	25,977,202	24,427,246	23,266,183	21,355,120	6.3%	5.0%	8.9%	6.7%	1,549,956
<b>Health and Social Services</b>	353,012,358	328,458,652	311,304,713	288,581,513	7.5%	5.5%	7.9%	6.9%	24,553,706
<i>Hospitals</i>	179,057,813	168,878,812	161,003,081	153,329,633	6.0%	4.9%	5.0%	5.3%	10,179,001
<i>Doctors, Dentists, and Other Health Practitioners</i>	40,957,721	40,123,032	38,745,151	35,902,720	2.1%	3.6%	7.9%	4.5%	834,689
<i>Outpatient Care Centers and Other Health Services</i>	58,025,804	52,246,404	49,140,125	44,149,964	11.1%	6.3%	11.3%	9.5%	5,779,400
<i>Nursing &amp; Personal Care Facilities</i>	34,970,772	32,913,800	32,079,110	28,840,818	6.2%	2.6%	11.2%	6.6%	2,056,972
<i>Social Services</i>	40,000,249	34,296,604	30,337,246	26,358,379	16.6%	13.1%	15.1%	14.9%	5,703,645
<b>Education</b>	153,020,458	148,152,456	143,895,319	136,844,058	3.3%	3.0%	5.2%	3.8%	4,868,002
<i>College and Universities</i>	118,797,334	114,806,728	111,507,890	106,207,814	3.5%	3.0%	5.0%	3.8%	3,990,607
<i>Elementary, Secondary Schools (except public schools)</i>	23,497,916	22,960,661	21,860,768	20,917,213	2.3%	5.0%	4.5%	4.0%	537,256
<i>Other Educational Services</i>	10,725,208	10,385,068	10,526,660	9,719,031	3.3%	-1.3%	8.3%	3.3%	340,140
<b>Professional Services</b>	196,569,181	187,667,247	177,268,248	160,535,649	4.7%	5.9%	10.4%	7.0%	8,901,934
<i>Legal Services</i>	67,095,303	64,226,098	60,756,451	58,202,599	4.5%	5.7%	4.4%	4.9%	2,869,205
<i>Management Consulting</i>	37,030,639	34,601,648	32,975,989	30,508,470	7.0%	4.9%	8.1%	6.7%	2,428,992
<i>Engineering &amp; Architectural Services</i>	20,783,842	19,764,168	18,944,951	17,165,277	5.2%	4.3%	10.4%	6.6%	1,019,674
<i>Computer</i>	17,392,728	16,728,805	15,251,593	13,930,448	4.0%	9.7%	9.5%	7.7%	663,922
<i>Accounting, Auditing, Bookkeeping</i>	21,018,662	20,740,494	19,654,585	17,027,979	1.3%	5.5%	15.4%	7.3%	278,168
<i>Advertising and Other Professional Services</i>	33,248,007	31,606,033	29,684,680	23,700,875	5.2%	6.5%	25.2%	11.9%	1,641,974
<b>Hotels</b>	9,898,317	9,269,543	9,419,565	8,936,931	6.8%	-1.6%	5.4%	3.5%	628,775
<b>Restaurants</b>	46,922,298	45,487,821	43,380,915	38,147,965	3.2%	4.9%	13.7%	7.1%	1,434,477
<b>Sport Teams</b>	19,227,456	16,140,823	16,726,947	14,731,246	19.1%	-3.5%	13.5%	9.3%	3,086,634
<b>Arts, Entertainment, and Other Recreation</b>	13,264,259	12,633,077	12,504,531	10,671,128	5.0%	1.0%	17.2%	7.5%	631,182
<b>Other Sectors</b>	123,760,483	119,410,907	112,144,485	101,857,135	3.6%	6.5%	10.1%	6.7%	4,349,575
<i>Membership Organizations</i>	33,832,158	33,002,701	31,724,124	28,655,192	2.5%	4.0%	10.7%	5.7%	829,457
<i>Employment/Outsourcing Agencies</i>	27,779,642	27,299,251	24,540,782	23,100,214	1.8%	11.2%	6.2%	6.3%	480,391
<i>Security and Investigation Services</i>	7,863,543	7,651,988	7,514,874	6,797,412	2.8%	1.8%	10.6%	5.0%	211,555
<i>Services to Buildings</i>	9,511,613	9,839,776	10,211,999	9,836,981	-3.3%	-3.6%	3.8%	-1.1%	(328,163)
<i>Miscellaneous Sectors</i>	44,773,526	41,617,191	38,152,706	33,467,336	7.6%	9.1%	14.0%	10.2%	3,156,335
<b>Government</b>	194,356,135	193,321,434	181,658,665	172,627,248	0.5%	6.4%	5.2%	4.0%	1,034,701
<i>State Government (PA)</i>	11,092,018	10,840,366	10,379,813	10,129,750	2.3%	4.4%	2.5%	3.1%	251,652
<i>City, School District, Local Quasi Govt.</i>	104,683,757	104,492,624	96,924,974	96,625,984	0.2%	7.8%	0.3%	2.7%	191,133
<i>Federal Government (includes US Post Office)</i>	76,471,631	76,016,278	72,385,799	63,922,279	0.6%	5.0%	13.2%	6.2%	455,352
<i>Other Governments</i>	2,108,730	1,972,166	1,968,079	1,949,236	6.9%	0.2%	1.0%	2.7%	136,564
<b>Unclassified Accounts</b>	1,936,626	1,704,113	1,376,775	1,244,354	13.6%	23.8%	10.6%	15.9%	232,513
<b>Total from Taxpayer Database (TIPS)</b>	<b>\$1,693,169,665</b>	<b>\$1,620,108,595</b>	<b>\$1,549,009,526</b>	<b>\$1,445,018,635</b>	<b>4.5%</b>	<b>4.6%</b>	<b>7.2%</b>	<b>5.4%</b>	<b>\$73,061,070</b>
<b>Total from City's Accounting System (FAMIS)</b>	<b>\$1,691,690,344</b>	<b>\$1,616,721,713</b>	<b>\$1,546,282,374</b>	<b>\$1,443,530,737</b>	<b>4.6%</b>	<b>4.6%</b>	<b>7.1%</b>	<b>5.4%</b>	<b>\$74,968,631</b>