

Table 1: Wage Tax by Industry- September

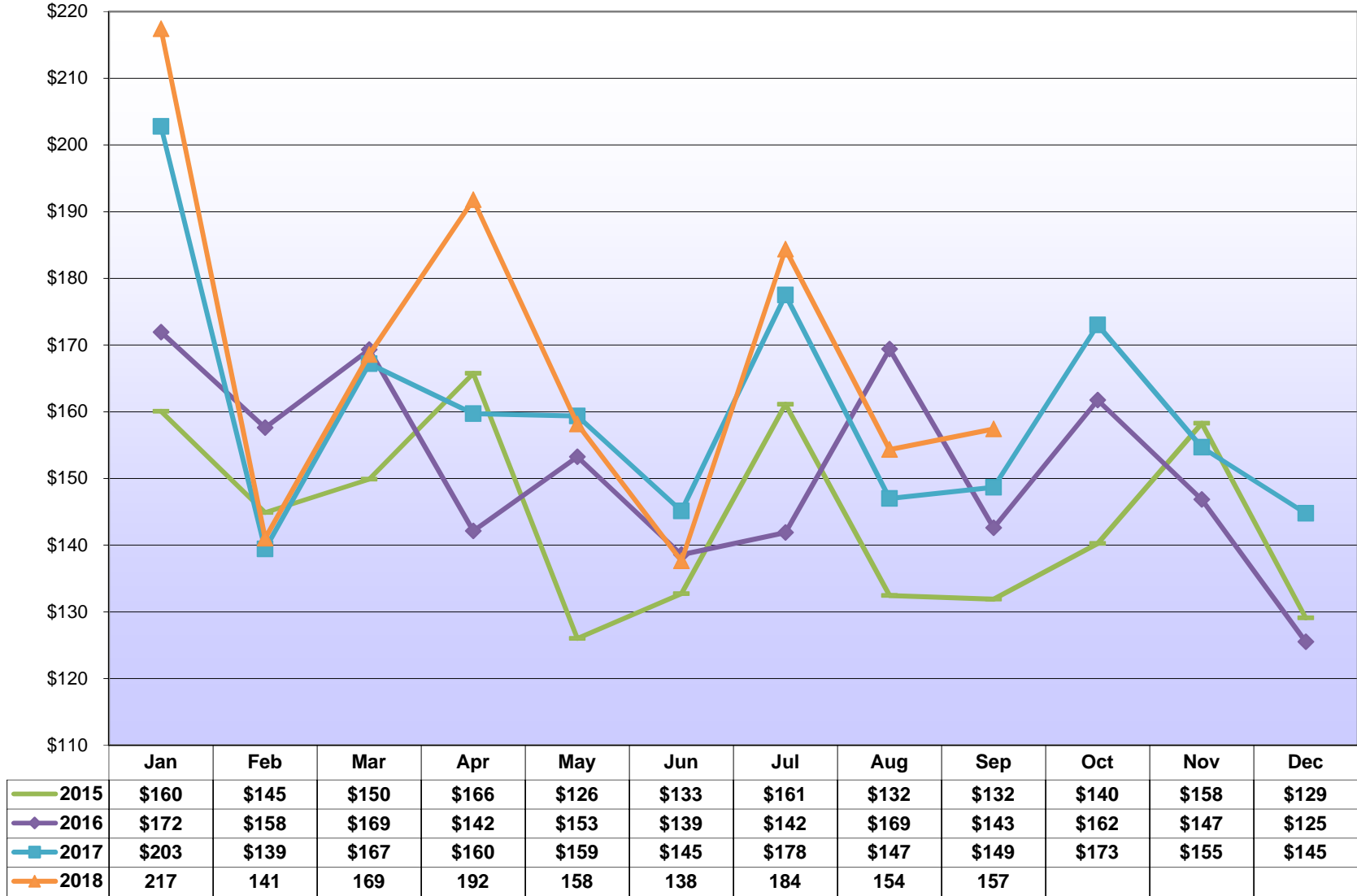
City of Philadelphia Revenue Department

NAICS Sector / Industry Group	Sep 2018	Sep 2017	Sep 2016	Sep 2015	12-Month Growth Rate (Sep - Sep)			3-Yr Annualized (September 18-15)	Difference (September 18-17)
					2018	2017	2016		
Construction	5,356,372	5,268,874	4,714,745	4,645,137	1.7%	11.8%	1.5%	4.9%	87,498
Manufacturing (includes headquarter offices & factories)	8,661,347	7,840,906	7,540,857	7,837,579	10.5%	4.0%	-3.8%	3.4%	820,441
<i>Chemicals, Petroleum Refining</i>	1,784,636	1,543,668	1,274,048	1,361,328	15.6%	21.2%	-6.4%	9.4%	240,969
<i>Pharmaceuticals</i>	1,610,486	1,377,959	1,611,021	1,620,184	16.9%	-14.5%	-0.6%	-0.2%	232,527
<i>Transportation Equipment</i>	708,241	783,085	852,054	909,325	-9.6%	-8.1%	-6.3%	-8.0%	(74,844)
<i>Food & Beverage Products</i>	1,167,817	1,169,482	1,118,730	1,178,687	-0.1%	4.5%	-5.1%	-0.3%	(1,665)
<i>Machinery, Electronic, and Other Electric Equipment</i>	699,166	653,850	571,029	611,944	6.9%	14.5%	-6.7%	4.5%	45,316
<i>Metal Manufacturing</i>	915,201	727,435	621,578	585,133	25.8%	17.0%	6.2%	16.1%	187,766
<i>Miscellaneous Manufacturing</i>	1,775,800	1,585,427	1,492,397	1,570,979	12.0%	6.2%	-5.0%	4.2%	190,373
Public Utilities	1,079,064	1,038,871	1,111,206	1,086,911	3.9%	-6.5%	2.2%	-0.2%	40,193
Transportation and Warehousing	5,270,495	4,589,999	4,479,332	4,910,857	14.8%	2.5%	-8.8%	2.4%	680,495
Telecommunication	3,284,690	3,021,555	2,694,466	2,518,229	8.7%	12.1%	7.0%	9.3%	263,135
Publishing, Broadcasting, and Other Information	1,808,684	1,796,604	1,536,868	1,728,188	0.7%	16.9%	-11.1%	1.5%	12,080
Wholesale Trade	3,234,676	2,957,187	2,791,781	2,792,615	9.4%	5.9%	0.0%	5.0%	277,489
Retail Trade	7,139,497	6,403,378	6,204,961	6,003,183	11.5%	3.2%	3.4%	5.9%	736,119
Banking & Credit Unions	2,589,125	2,615,184	2,492,194	2,402,871	-1.0%	4.9%	3.7%	2.5%	(26,059)
Securities / Financial Investments	3,572,072	4,290,339	3,713,439	3,368,338	-16.7%	15.5%	10.2%	2.0%	(718,267)
Insurance	4,546,939	4,227,111	4,150,633	4,370,925	7.6%	1.8%	-5.0%	1.3%	319,828
Real Estate, Rental and Leasing	2,057,844	2,098,425	1,990,578	1,824,380	-1.9%	5.4%	9.1%	4.1%	(40,581)
Health and Social Services	32,482,482	31,097,625	28,362,856	27,729,924	4.5%	9.6%	2.3%	5.4%	1,384,857
<i>Hospitals</i>	17,114,260	17,304,993	15,938,791	16,059,122	-1.1%	8.6%	-0.7%	2.1%	(190,733)
<i>Doctors, Dentists, and Other Health Practitioners</i>	3,361,545	3,234,322	3,020,838	3,004,832	3.9%	7.1%	0.5%	3.8%	127,223
<i>Outpatient Care Centers and Other Health Services</i>	5,085,705	4,382,172	4,016,050	3,593,592	16.1%	9.1%	11.8%	12.3%	703,532
<i>Nursing & Personal Care Facilities</i>	3,298,265	3,166,382	2,785,979	2,669,897	4.2%	13.7%	4.3%	7.3%	131,883
<i>Social Services</i>	3,622,707	3,009,756	2,601,199	2,402,481	20.4%	15.7%	8.3%	14.7%	612,951
Education	15,701,573	15,008,264	15,051,254	14,351,787	4.6%	-0.3%	4.9%	3.0%	693,309
<i>College and Universities</i>	12,753,496	12,326,355	12,395,375	11,521,045	3.5%	-0.6%	7.6%	3.4%	427,141
<i>Elementary, Secondary Schools (except public schools)</i>	2,031,739	1,834,505	1,791,199	2,027,681	10.8%	2.4%	-11.7%	0.1%	197,234
<i>Other Educational Services</i>	916,337	847,404	864,679	803,061	8.1%	-2.0%	7.7%	4.5%	68,934
Professional Services	16,174,164	15,366,308	13,840,909	13,881,754	5.3%	11.0%	-0.3%	5.2%	807,856
<i>Legal Services</i>	5,117,911	5,523,622	4,441,021	4,484,898	-7.3%	24.4%	-1.0%	4.5%	(405,711)
<i>Management Consulting</i>	3,091,086	2,524,077	2,488,188	3,047,082	22.5%	1.4%	-18.3%	0.5%	567,009
<i>Engineering & Architectural Services</i>	1,805,692	1,592,468	1,458,313	1,451,674	13.4%	9.2%	0.5%	7.5%	213,224
<i>Computer</i>	1,498,947	1,376,061	1,236,425	1,133,985	8.9%	11.3%	9.0%	9.7%	122,887
<i>Accounting, Auditing, Bookkeeping</i>	2,018,457	2,091,738	2,036,538	1,752,211	-3.5%	2.7%	16.2%	4.8%	(73,281)
<i>Advertising and Other Professional Services</i>	2,642,071	2,258,342	2,180,425	2,011,904	17.0%	3.6%	8.4%	9.5%	383,729
Hotels	903,835	790,404	856,108	838,447	14.4%	-7.7%	2.1%	2.5%	113,431
Restaurants	3,951,814	3,499,795	3,301,436	3,221,594	12.9%	6.0%	2.5%	7.0%	452,019
Sport Teams	2,428,809	2,157,046	2,451,536	2,277,836	12.6%	-12.0%	7.6%	2.2%	271,763
Arts, Entertainment, and Other Recreation	1,203,980	1,099,323	1,048,035	1,010,018	9.5%	4.9%	3.8%	6.0%	104,657
Other Sectors	10,495,004	9,422,759	8,778,152	8,502,437	11.4%	7.3%	3.2%	7.3%	1,072,245
<i>Membership Organizations</i>	2,993,868	2,714,866	2,668,835	2,582,507	10.3%	1.7%	3.3%	5.1%	279,002
<i>Employment/Outsourcing Agencies</i>	2,353,226	2,197,780	1,881,918	2,050,498	7.1%	16.8%	-8.2%	4.7%	155,446
<i>Security and Investigation Services</i>	820,873	801,275	662,870	628,012	2.4%	20.9%	5.6%	9.3%	19,598
<i>Services to Buildings</i>	814,713	850,000	824,890	839,821	-4.2%	3.0%	-1.8%	-1.0%	(35,287)
<i>Miscellaneous Sectors</i>	3,512,324	2,858,838	2,739,639	2,401,599	22.9%	4.4%	14.1%	13.5%	653,486
Government	25,279,781	23,972,619	25,422,836	16,532,824	5.5%	-5.7%	53.8%	15.2%	1,307,162
<i>State Government (PA)</i>	1,247,008	1,005,217	962,218	943,367	24.1%	4.5%	2.0%	9.7%	241,790
<i>City, School District, Local Quasi Govt.</i>	11,528,610	10,597,325	9,365,129	11,390,347	8.8%	13.2%	-17.8%	0.4%	931,284
<i>Federal Government (includes US Post Office)</i>	12,347,782	12,218,232	14,955,524	4,032,730	1.1%	-18.3%	270.9%	45.2%	129,550
<i>Other Governments</i>	156,381	151,844	139,965	166,380	3.0%	8.5%	-15.9%	-2.0%	4,537
Unclassified Accounts	173,718	97,438	51,662	53,062	78.3%	88.6%	-2.6%	48.5%	76,281
Total from Taxpayer Database (TIPS)	\$157,395,966	\$148,660,015	\$142,585,842	\$131,888,898	5.9%	4.3%	8.1%	6.1%	\$8,735,951
Total from City's Accounting System (FAMIS)	\$158,142,614	\$148,619,110	\$142,186,493	\$132,022,150	6.4%	4.5%	7.7%	6.2%	\$9,523,504

Total PICA & City Wage Tax - Monthly

City of Philadelphia Revenue Department

(In Millions of Dollars)



Source: TIPS

Table 2: Wage Tax by Industry- Fiscal Year to Date (July thru September)

City of Philadelphia Revenue Department

NAICS Sector / Industry Group	FYTD 2019	FYTD 2018	FYTD 2017	FYTD 2016	FYTD Growth Rate (Jul - Sep)			3-Yr Annualized (FYTD 19-16)	Difference (FYTD 19-18)
					2019	2018	2017		
Construction	18,101,524	17,253,783	16,273,651	15,957,069	4.9%	6.0%	2.0%	4.3%	847,741
Manufacturing (includes headquarter offices & factories)	27,235,471	25,685,444	24,963,438	26,251,072	6.0%	2.9%	-4.9%	1.2%	1,550,027
<i>Chemicals, Petroleum Refining</i>	4,876,206	4,400,574	4,187,823	4,514,228	10.8%	5.1%	-7.2%	2.6%	475,632
<i>Pharmaceuticals</i>	4,929,097	4,768,668	4,704,855	4,964,303	3.4%	1.4%	-5.2%	-0.2%	160,429
<i>Transportation Equipment</i>	2,250,439	2,500,051	2,720,537	2,753,673	-10.0%	-8.1%	-1.2%	-6.5%	(249,613)
<i>Food & Beverage Products</i>	3,929,738	3,912,567	3,789,093	3,860,648	0.4%	3.3%	-1.9%	0.6%	17,171
<i>Machinery, Electronic, and Other Electric Equipment</i>	2,377,865	2,216,635	2,060,217	2,201,493	7.3%	7.6%	-6.4%	2.6%	161,230
<i>Metal Manufacturing</i>	2,661,727	2,185,637	2,051,320	2,030,964	21.8%	6.5%	1.0%	9.4%	476,090
<i>Miscellaneous Manufacturing</i>	6,210,398	5,701,312	5,449,593	5,925,763	8.9%	4.6%	-8.0%	1.6%	509,087
Public Utilities	3,232,298	3,371,118	3,153,584	3,009,498	-4.1%	6.9%	4.8%	2.4%	(138,819)
Transportation and Warehousing	17,032,152	15,543,227	14,600,068	15,241,316	9.6%	6.5%	-4.2%	3.8%	1,488,925
Telecommunication	10,414,615	9,525,029	9,244,555	8,994,875	9.3%	3.0%	2.8%	5.0%	889,586
Publishing, Broadcasting, and Other Information	6,219,936	5,710,701	5,143,468	5,687,139	8.9%	11.0%	-9.6%	3.0%	509,235
Wholesale Trade	10,894,892	10,713,408	10,174,716	9,906,672	1.7%	5.3%	2.7%	3.2%	181,484
Retail Trade	23,177,251	22,020,802	21,244,941	20,768,394	5.3%	3.7%	2.3%	3.7%	1,156,449
Banking & Credit Unions	8,519,512	8,305,695	8,220,776	8,433,927	2.6%	1.0%	-2.5%	0.3%	213,817
Securities / Financial Investments	11,277,059	11,936,664	10,030,675	10,255,552	-5.5%	19.0%	-2.2%	3.2%	(659,605)
Insurance	14,377,089	13,642,655	13,958,340	15,381,897	5.4%	-2.3%	-9.3%	-2.2%	734,434
Real Estate, Rental and Leasing	7,172,357	7,035,366	6,614,271	6,089,973	1.9%	6.4%	8.6%	5.6%	136,991
Health and Social Services	106,217,495	96,608,434	94,246,569	89,528,344	9.9%	2.5%	5.3%	5.9%	9,609,061
<i>Hospitals</i>	54,181,114	49,489,367	49,954,604	48,282,057	9.5%	-0.9%	3.5%	3.9%	4,691,747
<i>Doctors, Dentists, and Other Health Practitioners</i>	11,786,096	11,464,205	11,326,989	10,879,967	2.8%	1.2%	4.1%	2.7%	321,891
<i>Outpatient Care Centers and Other Health Services</i>	17,320,398	15,270,708	14,518,409	13,119,587	13.4%	5.2%	10.7%	9.7%	2,049,689
<i>Nursing & Personal Care Facilities</i>	10,590,288	9,971,290	9,402,214	9,004,715	6.2%	6.1%	4.4%	5.6%	618,998
<i>Social Services</i>	12,339,599	10,412,864	9,044,354	8,242,017	18.5%	15.1%	9.7%	14.4%	1,926,735
Education	47,555,567	45,941,685	44,511,871	43,479,609	3.5%	3.2%	2.4%	3.0%	1,613,882
<i>College and Universities</i>	37,478,229	36,466,406	35,351,812	34,052,547	2.8%	3.2%	3.8%	3.2%	1,011,823
<i>Elementary, Secondary Schools (except public schools)</i>	6,906,422	6,556,274	6,225,863	6,519,425	5.3%	5.3%	-4.5%	1.9%	350,147
<i>Other Educational Services</i>	3,170,915	2,919,005	2,934,197	2,907,637	8.6%	-0.5%	0.9%	2.9%	251,911
Professional Services	54,011,832	50,796,718	47,833,642	46,087,721	6.3%	6.2%	3.8%	5.4%	3,215,114
<i>Legal Services</i>	16,755,662	16,757,903	15,156,953	15,136,280	0.0%	10.6%	0.1%	3.4%	(2,241)
<i>Management Consulting</i>	10,436,034	9,379,025	9,090,327	9,276,307	11.3%	3.2%	-2.0%	4.0%	1,057,009
<i>Engineering & Architectural Services</i>	6,047,709	5,515,792	5,387,034	5,122,612	9.6%	2.4%	5.2%	5.7%	531,917
<i>Computer</i>	5,071,636	4,664,312	4,256,711	4,114,994	8.7%	9.6%	3.4%	7.2%	407,324
<i>Accounting, Auditing, Bookkeeping</i>	5,963,032	6,012,499	5,808,677	5,249,494	-0.8%	3.5%	10.7%	4.3%	(49,467)
<i>Advertising and Other Professional Services</i>	9,737,760	8,467,188	8,133,939	7,188,035	15.0%	4.1%	13.2%	10.6%	1,270,572
Hotels	2,956,888	2,787,813	2,870,666	2,566,548	6.1%	-2.9%	11.8%	4.8%	169,075
Restaurants	13,729,328	13,184,717	12,572,417	12,066,027	4.1%	4.9%	4.2%	4.4%	544,610
Sport Teams	5,317,778	5,042,189	5,870,428	4,860,510	5.5%	-14.1%	20.8%	3.0%	275,589
Arts, Entertainment, and Other Recreation	3,880,351	3,719,878	3,634,744	3,275,916	4.3%	2.3%	11.0%	5.8%	160,473
Other Sectors	36,810,657	35,561,298	32,850,364	30,849,670	3.5%	8.3%	6.5%	6.1%	1,249,358
<i>Membership Organizations</i>	10,154,257	9,666,961	9,424,212	8,895,341	5.0%	2.6%	5.9%	4.5%	487,296
<i>Employment/Outsourcing Agencies</i>	8,256,880	8,561,860	6,947,541	6,987,968	-3.6%	23.2%	-0.6%	5.7%	(304,980)
<i>Security and Investigation Services</i>	2,378,812	2,366,597	2,294,359	2,123,649	0.5%	3.1%	8.0%	3.9%	12,215
<i>Services to Buildings</i>	2,891,665	3,138,642	3,069,403	3,100,303	-7.9%	2.3%	-1.0%	-2.3%	(246,978)
<i>Miscellaneous Sectors</i>	13,129,043	11,827,238	11,114,850	9,742,410	11.0%	6.4%	14.1%	10.5%	1,301,806
Government	67,497,200	68,591,512	65,433,957	46,371,666	-1.6%	4.8%	41.1%	13.3%	(1,094,312)
<i>State Government (PA)</i>	3,476,360	3,200,318	3,034,589	3,005,298	8.6%	5.5%	1.0%	5.0%	276,042
<i>City, School District, Local Quasi Govt.</i>	33,300,178	34,429,579	30,811,491	29,905,911	-3.3%	11.7%	3.0%	3.6%	(1,129,401)
<i>Federal Government (includes US Post Office)</i>	30,099,429	30,370,937	31,013,324	12,892,179	-0.9%	-2.1%	140.6%	32.7%	(271,508)
<i>Other Governments</i>	621,233	590,678	574,552	568,278	5.2%	2.8%	1.1%	3.0%	30,554
Unclassified Accounts	689,535	595,921	399,890	389,669	15.7%	49.0%	2.6%	21.0%	93,613
Total from Taxpayer Database (TIPS)	\$496,320,786	\$473,574,059	\$453,847,032	\$425,453,064	4.8%	4.3%	6.7%	5.3%	\$22,746,727
Total from City's Accounting System (FAMIS)	\$496,752,431	\$473,566,062	\$453,896,569	\$424,844,074	4.9%	4.3%	6.8%	5.4%	\$23,186,369

Table 3: Wage Tax by Industry- Calendar Year to Date (January thru September)

City of Philadelphia Revenue Department

NAICS Sector / Industry Group	CYTD 2018	CYTD 2017	CYTD 2016	CYTD 2015	CYTD Growth Rate (Jan - Sep)			3-Yr Annualized (CYTD 18-15)	Difference (CYTD 18-17)
					2018	2017	2016		
Construction	51,711,756	50,737,259	48,706,766	43,161,497	1.9%	4.2%	12.8%	6.2%	974,497
Manufacturing (includes headquarter offices & factories)	88,402,301	86,807,395	86,165,431	86,005,082	1.8%	0.7%	0.2%	0.9%	1,594,906
<i>Chemicals, Petroleum Refining</i>	17,514,209	16,647,118	16,182,547	16,218,228	5.2%	2.9%	-0.2%	2.6%	867,091
<i>Pharmaceuticals</i>	18,490,560	18,433,389	18,556,492	19,142,619	0.3%	-0.7%	-3.1%	-1.1%	57,171
<i>Transportation Equipment</i>	7,252,603	8,074,102	8,491,358	8,017,863	-10.2%	-4.9%	5.9%	-3.3%	(821,499)
<i>Food & Beverage Products</i>	12,092,030	12,167,973	11,662,001	11,446,423	-0.6%	4.3%	1.9%	1.8%	(75,943)
<i>Machinery, Electronic, and Other Electric Equipment</i>	7,029,990	6,876,201	6,591,919	6,781,627	2.2%	4.3%	-2.8%	1.2%	153,789
<i>Metal Manufacturing</i>	7,499,522	7,097,450	7,048,725	6,486,456	5.7%	0.7%	8.7%	5.0%	402,072
<i>Miscellaneous Manufacturing</i>	18,523,387	17,511,162	17,632,390	17,911,867	5.8%	-0.7%	-1.6%	1.1%	1,012,225
Public Utilities	11,542,921	11,390,180	10,727,850	9,956,518	1.3%	6.2%	7.7%	5.1%	152,741
Transportation and Warehousing	51,231,463	47,043,286	45,349,740	44,151,602	8.9%	3.7%	2.7%	5.1%	4,188,177
Telecommunication	40,570,498	40,980,654	35,894,749	32,551,552	-1.0%	14.2%	10.3%	7.6%	(410,156)
Publishing, Broadcasting, and Other Information	19,186,851	17,319,184	16,859,361	18,018,017	10.8%	2.7%	-6.4%	2.1%	1,867,668
Wholesale Trade	33,634,259	33,339,315	31,911,754	30,329,373	0.9%	4.5%	5.2%	3.5%	294,944
Retail Trade	71,378,104	67,859,674	66,991,025	63,612,651	5.2%	1.3%	5.3%	3.9%	3,518,430
Banking & Credit Unions	30,751,797	31,298,579	29,071,434	28,702,020	-1.7%	7.7%	1.3%	2.3%	(546,783)
Securities / Financial Investments	44,907,470	44,149,754	41,238,083	42,685,385	1.7%	7.1%	-3.4%	1.7%	757,715
Insurance	52,802,517	50,059,761	51,259,562	49,137,139	5.5%	-2.3%	4.3%	2.4%	2,742,757
Real Estate, Rental and Leasing	22,968,614	21,657,122	20,553,641	19,445,646	6.1%	5.4%	5.7%	5.7%	1,311,492
Health and Social Services	309,173,642	291,527,599	277,761,506	259,765,794	6.1%	5.0%	6.9%	6.0%	17,646,043
<i>Hospitals</i>	156,818,097	150,476,759	144,654,176	137,147,142	4.2%	4.0%	5.5%	4.6%	6,341,338
<i>Doctors, Dentists, and Other Health Practitioners</i>	35,921,455	35,598,036	34,322,233	32,668,373	0.9%	3.7%	5.1%	3.2%	323,420
<i>Outpatient Care Centers and Other Health Services</i>	50,732,379	46,174,183	43,666,165	40,011,118	9.9%	5.7%	9.1%	8.2%	4,558,196
<i>Nursing & Personal Care Facilities</i>	30,673,110	29,122,525	28,311,698	25,979,815	5.3%	2.9%	9.0%	5.7%	1,550,585
<i>Social Services</i>	35,028,600	30,156,095	26,807,234	23,959,346	16.2%	12.5%	11.9%	13.5%	4,872,505
Education	138,978,950	132,406,747	128,008,602	122,602,669	5.0%	3.4%	4.4%	4.3%	6,572,203
<i>College and Universities</i>	108,666,193	102,757,467	99,256,289	94,753,943	5.8%	3.5%	4.8%	4.7%	5,908,727
<i>Elementary, Secondary Schools (except public schools)</i>	20,790,170	20,487,856	19,424,687	19,078,692	1.5%	5.5%	1.8%	2.9%	302,314
<i>Other Educational Services</i>	9,522,587	9,161,425	9,327,626	8,770,034	3.9%	-1.8%	6.4%	2.8%	361,162
Professional Services	174,036,748	166,277,068	157,030,423	146,506,601	4.7%	5.9%	7.2%	5.9%	7,759,680
<i>Legal Services</i>	60,812,085	58,344,404	55,055,667	53,678,239	4.2%	6.0%	2.6%	4.2%	2,467,681
<i>Management Consulting</i>	32,674,953	30,574,385	29,058,994	27,975,049	6.9%	5.2%	3.9%	5.3%	2,100,567
<i>Engineering & Architectural Services</i>	18,401,064	17,494,959	16,680,203	15,616,919	5.2%	4.9%	6.8%	5.6%	906,105
<i>Computer</i>	15,229,572	14,724,231	13,363,867	12,690,638	3.4%	10.2%	5.3%	6.3%	505,340
<i>Accounting, Auditing, Bookkeeping</i>	17,901,382	17,877,556	16,959,657	14,951,942	0.1%	5.4%	13.4%	6.2%	23,826
<i>Advertising and Other Professional Services</i>	29,017,694	27,261,533	25,912,036	21,593,814	6.4%	5.2%	20.0%	10.4%	1,756,161
Hotels	8,619,125	8,286,999	8,458,921	8,094,059	4.0%	-2.0%	4.5%	2.1%	332,126
Restaurants	41,140,572	40,131,589	38,373,299	34,428,025	2.5%	4.6%	11.5%	6.1%	1,008,983
Sport Teams	16,729,782	13,845,168	14,656,904	12,922,959	20.8%	-5.5%	13.4%	9.0%	2,884,613
Arts, Entertainment, and Other Recreation	11,596,973	11,132,684	10,932,395	9,710,922	4.2%	1.8%	12.6%	6.1%	464,290
Other Sectors	108,437,326	104,623,826	98,195,160	92,357,797	3.6%	6.5%	6.3%	5.5%	3,813,500
<i>Membership Organizations</i>	29,626,535	28,912,115	27,706,584	25,899,707	2.5%	4.4%	7.0%	4.6%	714,420
<i>Employment/Outsourcing Agencies</i>	24,404,476	24,351,474	21,785,805	20,862,759	0.2%	11.8%	4.4%	5.4%	53,002
<i>Security and Investigation Services</i>	7,061,936	6,817,910	6,614,641	6,124,714	3.6%	3.1%	8.0%	4.9%	244,025
<i>Services to Buildings</i>	8,300,509	8,561,825	8,986,107	8,960,555	-3.1%	-4.7%	0.3%	-2.5%	(261,316)
<i>Miscellaneous Sectors</i>	39,043,870	35,980,502	33,102,023	30,510,061	8.5%	8.7%	8.5%	8.6%	3,063,368
Government	177,961,155	174,740,011	167,936,700	149,469,626	1.8%	4.1%	12.4%	6.0%	3,221,145
<i>State Government (PA)</i>	10,062,497	9,651,777	9,208,891	9,205,680	4.3%	4.8%	0.0%	3.0%	410,720
<i>City, School District, Local Quasi Govt.</i>	94,693,671	92,512,118	87,837,594	87,345,752	2.4%	5.3%	0.6%	2.7%	2,181,553
<i>Federal Government (includes US Post Office)</i>	71,360,141	70,840,528	69,174,716	51,144,635	0.7%	2.4%	35.3%	11.7%	519,612
<i>Other Governments</i>	1,844,847	1,735,587	1,715,499	1,773,560	6.3%	1.2%	-3.3%	1.3%	109,260
Unclassified Accounts	1,605,737	1,382,647	1,174,481	1,139,523	16.1%	17.7%	3.1%	12.1%	223,090
Total from Taxpayer Database (TIPS)	\$1,507,368,561	\$1,446,996,501	\$1,387,257,788	\$1,304,754,458	4.2%	4.3%	6.3%	4.9%	\$60,372,060
Total from City's Accounting System (FAMIS)	\$1,505,731,160	\$1,443,693,657	\$1,384,682,032	\$1,303,329,013	4.3%	4.3%	6.2%	4.9%	\$62,037,503