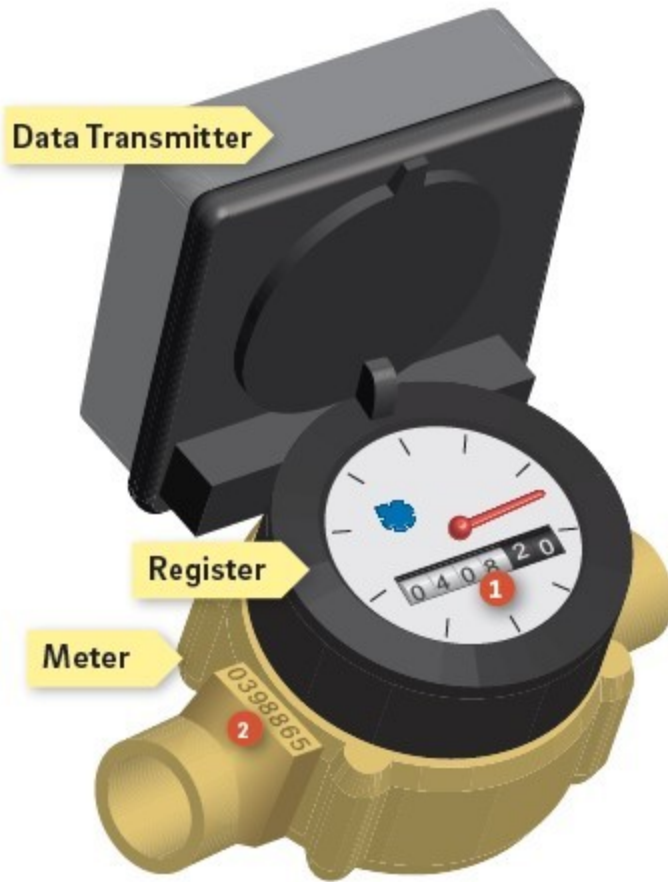


## Parts of Your Water Meter



1 This six digit number (example: 0408.20.) reflects the meter's current **Usage Reading**. Be sure to record all six digits including any leading zeros, if you need to share this number.

2 This seven digit number (example: 0398865) is the **Meter Number**. It is engraved into your meter and is also available on a white sticker on the side of the device.



### What do the dials mean?

The large red needle will move around the face of the meter one time for every 10 gallons you use. The small blue dial will move even if you have a very small leak.