

Table 1: Wage Tax by Industry- November

City of Philadelphia Revenue Department

NAICS Sector / Industry Group	Nov 2017	Nov 2016	Nov 2015	Nov 2014	12-Month Growth Rate (Nov - Nov)		2015	3-Yr Annualized (November 17-14)	Difference (November 17-16)
					2017	2016			
Construction	5,300,035	5,268,789	6,017,748	4,903,088	0.6%	-12.4%	22.7%	2.6%	31,246
Manufacturing (includes headquarter offices & factories)	8,549,699	8,324,622	9,578,394	8,191,571	2.7%	-13.1%	16.9%	1.4%	225,078
<i>Chemicals, Petroleum Refining</i>	1,762,478	1,594,950	1,562,569	1,577,725	10.5%	2.1%	-1.0%	3.8%	167,528
<i>Pharmaceuticals</i>	1,439,074	1,377,464	1,973,847	1,337,054	4.5%	-30.2%	47.6%	2.5%	61,610
<i>Transportation Equipment</i>	886,705	941,524	870,305	830,116	-5.8%	8.2%	4.8%	2.2%	(54,819)
<i>Food & Beverage Products</i>	1,481,800	1,311,120	1,377,273	1,144,828	13.0%	-4.8%	20.3%	9.0%	170,680
<i>Machinery, Electronic, and Other Electric Equipment</i>	628,649	676,060	848,775	792,113	-7.0%	-20.3%	7.2%	-7.4%	(47,412)
<i>Metal Manufacturing</i>	686,041	720,690	688,928	701,399	-4.8%	4.6%	-1.8%	-0.7%	(34,649)
<i>Miscellaneous Manufacturing</i>	1,664,952	1,702,814	2,256,696	1,808,336	-2.2%	-24.5%	24.8%	-2.7%	(37,861)
Public Utilities	935,931	894,825	1,036,566	967,306	4.6%	-13.7%	7.2%	-1.1%	41,107
Transportation and Warehousing	5,704,392	5,179,419	4,964,697	4,331,916	10.1%	4.3%	14.6%	9.6%	524,972
Telecommunication	4,513,768	4,227,298	3,183,124	2,421,804	6.8%	32.8%	31.4%	23.1%	286,471
Publishing, Broadcasting, and Other Information	1,885,926	1,726,670	2,417,429	1,787,274	9.2%	-28.6%	35.3%	1.8%	159,256
Wholesale Trade	3,072,243	3,021,323	4,379,916	3,096,181	1.7%	-31.0%	41.5%	-0.3%	50,920
Retail Trade	6,976,112	7,151,409	8,101,867	6,705,125	-2.5%	-11.7%	20.8%	1.3%	(175,296)
Banking & Credit Unions	2,941,157	2,847,315	2,923,790	2,493,936	3.3%	-2.6%	17.2%	5.7%	93,842
Securities / Financial Investments	3,257,871	2,902,314	2,978,626	2,704,075	12.3%	-2.6%	10.2%	6.4%	355,557
Insurance	5,299,156	4,831,539	4,516,370	3,692,764	9.7%	7.0%	22.3%	12.8%	467,617
Real Estate, Rental and Leasing	1,968,825	1,849,100	2,476,660	1,830,917	6.5%	-25.3%	35.3%	2.5%	119,725
Health and Social Services	34,968,463	32,230,622	32,410,383	29,748,487	8.5%	-0.6%	8.9%	5.5%	2,737,841
<i>Hospitals</i>	19,554,269	17,146,180	15,977,666	15,786,191	14.0%	7.3%	1.2%	7.4%	2,408,089
<i>Doctors, Dentists, and Other Health Practitioners</i>	3,958,639	4,147,908	4,680,584	3,614,734	-4.6%	-11.4%	29.5%	3.1%	(189,269)
<i>Outpatient Care Centers and Other Health Services</i>	5,191,297	5,051,156	5,228,900	4,841,053	2.8%	-3.4%	8.0%	2.4%	140,140
<i>Nursing & Personal Care Facilities</i>	3,084,865	2,950,779	3,300,062	2,951,697	4.5%	-10.6%	11.8%	1.5%	134,086
<i>Social Services</i>	3,179,394	2,934,597	3,223,171	2,554,811	8.3%	-9.0%	26.2%	7.6%	244,796
Education	17,285,044	15,911,980	15,658,124	14,687,378	8.6%	1.6%	6.6%	5.6%	1,373,064
<i>College and Universities</i>	14,053,664	12,786,707	12,099,715	11,518,234	9.9%	5.7%	5.0%	6.9%	1,266,957
<i>Elementary, Secondary Schools (except public schools)</i>	2,304,794	2,127,327	2,390,854	2,194,570	8.3%	-11.0%	8.9%	1.6%	177,468
<i>Other Educational Services</i>	926,586	997,947	1,167,555	974,574	-7.2%	-14.5%	19.8%	-1.7%	(71,361)
Professional Services	18,090,904	15,265,473	19,244,806	13,468,790	18.5%	-20.7%	42.9%	10.3%	2,825,431
<i>Legal Services</i>	7,957,521	5,353,748	5,718,593	4,734,995	48.6%	-6.4%	20.8%	18.9%	2,603,773
<i>Management Consulting</i>	2,764,314	2,694,532	4,532,725	2,595,457	2.6%	-40.6%	74.6%	2.1%	69,782
<i>Engineering & Architectural Services</i>	1,767,792	1,748,945	2,115,328	1,634,813	1.1%	-17.3%	29.4%	2.6%	18,847
<i>Computer</i>	1,350,531	1,330,393	1,829,055	1,166,783	1.5%	-27.3%	56.8%	5.0%	20,139
<i>Accounting, Auditing, Bookkeeping</i>	1,839,241	1,903,033	1,875,418	1,491,087	-3.4%	1.5%	25.8%	7.2%	(63,792)
<i>Advertising and Other Professional Services</i>	2,411,505	2,234,822	3,173,688	1,845,655	7.9%	-29.6%	72.0%	9.3%	176,682
Hotels	988,434	956,429	997,040	1,012,410	3.3%	-4.1%	-1.5%	-0.8%	32,004
Restaurants	4,090,503	3,940,064	5,163,087	3,642,706	3.8%	-23.7%	41.7%	3.9%	150,439
Sport Teams	2,202,234	1,919,141	1,777,645	1,504,172	14.8%	8.0%	18.2%	13.6%	283,093
Arts, Entertainment, and Other Recreation	1,233,559	1,156,517	1,322,106	992,426	6.7%	-12.5%	33.2%	7.5%	77,043
Other Sectors	10,648,973	10,703,387	12,900,962	9,676,370	-0.5%	-17.0%	33.3%	3.2%	(54,414)
<i>Membership Organizations</i>	2,701,014	2,868,401	3,402,116	2,825,911	-5.8%	-15.7%	20.4%	-1.5%	(167,387)
<i>Employment/Outsourcing Agencies</i>	2,751,307	2,748,279	2,953,275	2,249,952	0.1%	-6.9%	31.3%	6.9%	3,028
<i>Security and Investigation Services</i>	735,765	758,217	721,823	665,440	-3.0%	5.0%	8.5%	3.4%	(22,452)
<i>Services to Buildings</i>	888,945	973,634	1,190,291	957,448	-8.7%	-18.2%	24.3%	-2.4%	(84,689)
<i>Miscellaneous Sectors</i>	3,571,943	3,354,857	4,633,456	2,977,618	6.5%	-27.6%	55.6%	6.3%	217,086
Government	14,478,199	16,325,744	16,016,542	13,567,141	-11.3%	1.9%	18.1%	2.2%	(1,847,545)
<i>State Government (PA)</i>	949,563	993,892	1,145,639	1,153,433	-4.5%	-13.2%	-0.7%	-6.3%	(44,328)
<i>City, School District, Local Quasi Govt.</i>	9,527,724	11,401,974	10,885,171	8,597,928	-16.4%	4.7%	26.6%	3.5%	(1,874,250)
<i>Federal Government (includes US Post Office)</i>	3,845,281	3,775,718	3,746,780	3,675,833	1.8%	0.8%	1.9%	1.5%	69,563
<i>Other Governments</i>	155,630	154,160	238,952	139,947	1.0%	-35.5%	70.7%	3.6%	1,471
Unclassified Accounts	294,413	153,275	213,411	202,278	92.1%	-28.2%	5.5%	13.3%	141,138
Total from Taxpayer Database (TIPS)	\$154,685,841	\$146,787,253	\$158,279,294	\$131,628,114	5.4%	-7.3%	20.2%	5.5%	\$7,898,588
Total from City's Accounting System (FAMIS)	\$154,667,771	\$147,069,267	\$157,542,553	\$131,636,433	5.2%	-6.6%	19.7%	5.5%	\$7,598,504

Total PICA & City Wage Tax - Monthly

City of Philadelphia Revenue Department

(In Millions of Dollars)

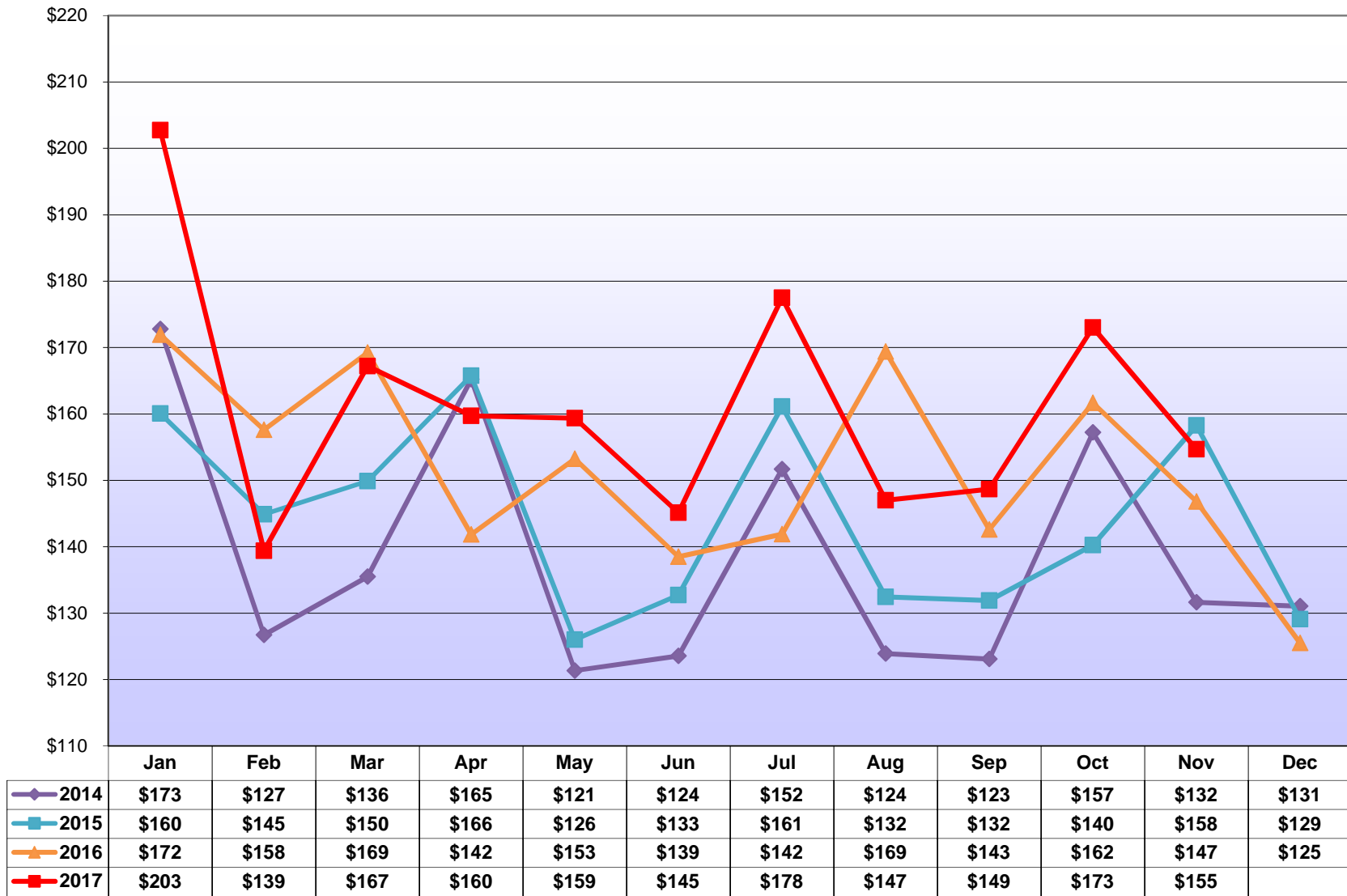


Table 2: Wage Tax by Industry- Fiscal Year to Date (July thru November)						City of Philadelphia Revenue Department			
NAICS Sector / Industry Group	FYTD 2018	FYTD 2017	FYTD 2016	FYTD 2015	FYTD Growth Rate (Jul - Nov)			3-Yr Annualized (FYTD 15-18)	Difference (FYTD 18-17)
					2017	2016	2015		
Construction	29,013,844	27,719,438	27,150,349	23,866,887	4.7%	2.1%	13.8%	6.7%	1,294,406
Manufacturing (includes headquarter offices & factories)	43,837,473	43,699,318	43,525,351	43,252,472	0.3%	0.4%	0.6%	0.4%	138,156
<i>Chemicals, Petroleum Refining</i>	7,374,907	7,376,389	7,472,540	7,577,151	0.0%	-1.3%	-1.4%	-0.9%	(1,481)
<i>Pharmaceuticals</i>	8,189,491	8,135,779	8,193,559	8,585,463	0.7%	-0.7%	-4.6%	-1.6%	53,713
<i>Transportation Equipment</i>	4,174,305	4,613,378	4,445,533	4,479,310	-9.5%	3.8%	-0.8%	-2.3%	(439,072)
<i>Food & Beverage Products</i>	7,105,576	6,956,082	6,417,009	5,997,431	2.1%	8.4%	7.0%	5.8%	149,495
<i>Machinery, Electronic, and Other Electric Equipment</i>	3,755,688	3,647,864	3,867,276	3,906,618	3.0%	-5.7%	-1.0%	-1.3%	107,824
<i>Metal Manufacturing</i>	3,659,691	3,532,378	3,347,582	3,220,171	3.6%	5.5%	4.0%	4.4%	127,314
<i>Miscellaneous Manufacturing</i>	9,577,814	9,437,449	9,781,852	9,486,328	1.5%	-3.5%	3.1%	0.3%	140,365
Public Utilities	5,352,606	5,115,884	4,932,529	4,853,727	4.6%	3.7%	1.6%	3.3%	236,722
Transportation and Warehousing	26,669,769	25,042,843	24,379,163	23,012,470	6.5%	2.7%	5.9%	5.0%	1,626,927
Telecommunication	17,107,258	16,309,023	14,577,790	12,630,619	4.9%	11.9%	15.4%	10.6%	798,236
Publishing, Broadcasting, and Other Information	10,247,050	9,561,479	9,884,462	9,389,622	7.2%	-3.3%	5.3%	3.0%	685,571
Wholesale Trade	18,182,572	17,554,088	17,118,332	16,203,660	3.6%	2.5%	5.6%	3.9%	628,485
Retail Trade	37,784,774	36,862,251	35,196,339	34,478,899	2.5%	4.7%	2.1%	3.1%	922,523
Banking & Credit Unions	14,130,572	14,127,084	13,725,055	12,873,547	0.0%	2.9%	6.6%	3.2%	3,488
Securities / Financial Investments	18,303,186	16,212,618	16,039,977	14,495,736	12.9%	1.1%	10.7%	8.1%	2,090,568
Insurance	24,071,595	23,462,595	24,562,064	23,051,253	2.6%	-4.5%	6.6%	1.5%	609,000
Real Estate, Rental and Leasing	11,717,891	11,179,764	10,544,531	10,090,828	4.8%	6.0%	4.5%	5.1%	538,128
Health and Social Services	168,353,311	159,966,942	150,686,022	143,596,872	5.2%	6.2%	4.9%	5.4%	8,386,369
<i>Hospitals</i>	87,445,115	83,301,148	80,442,214	76,632,601	5.0%	3.6%	5.0%	4.5%	4,143,966
<i>Doctors, Dentists, and Other Health Practitioners</i>	19,948,371	20,060,978	18,794,898	18,029,450	-0.6%	6.7%	4.2%	3.4%	(112,606)
<i>Outpatient Care Centers and Other Health Services</i>	26,902,414	25,312,769	22,487,333	21,639,324	6.3%	12.6%	3.9%	7.5%	1,589,644
<i>Nursing & Personal Care Facilities</i>	16,375,378	15,841,495	15,165,780	14,625,639	3.4%	4.5%	3.7%	3.8%	533,884
<i>Social Services</i>	17,682,034	15,450,553	13,795,797	12,669,858	14.4%	12.0%	8.9%	11.8%	2,231,481
Education	78,893,545	76,240,855	73,379,122	70,616,943	3.5%	3.9%	3.9%	3.8%	2,652,689
<i>College and Universities</i>	62,560,879	60,384,208	57,606,133	55,438,229	3.6%	4.8%	3.9%	4.1%	2,176,671
<i>Elementary, Secondary Schools (except public schools)</i>	11,308,745	10,762,839	10,748,800	10,432,036	5.1%	0.1%	3.0%	2.7%	545,907
<i>Other Educational Services</i>	5,023,920	5,093,809	5,024,189	4,746,678	-1.4%	1.4%	5.8%	1.9%	(69,888)
Professional Services	89,721,938	82,874,385	79,361,575	72,804,090	8.3%	4.4%	9.0%	7.2%	6,847,554
<i>Legal Services</i>	30,527,647	26,215,456	25,379,232	24,777,298	16.4%	3.3%	2.4%	7.2%	4,312,191
<i>Management Consulting</i>	16,043,506	16,347,863	16,959,079	14,992,746	-1.9%	-3.6%	13.1%	2.3%	(304,358)
<i>Engineering & Architectural Services</i>	9,570,047	9,414,827	8,786,298	8,014,455	1.6%	7.2%	9.6%	6.1%	155,220
<i>Computer</i>	8,057,496	7,514,356	7,183,858	6,497,967	7.2%	4.6%	10.6%	7.4%	543,140
<i>Accounting, Auditing, Bookkeeping</i>	10,695,936	10,415,579	9,200,950	8,218,898	2.7%	13.2%	11.9%	9.2%	280,357
<i>Advertising and Other Professional Services</i>	14,827,307	12,966,304	11,852,158	10,302,726	14.4%	9.4%	15.0%	12.9%	1,861,003
Hotels	4,743,799	4,761,091	4,406,460	4,844,205	-0.4%	8.0%	-9.0%	-0.7%	(17,292)
Restaurants	22,613,521	21,510,101	20,949,054	18,884,341	5.1%	2.7%	10.9%	6.2%	1,103,421
Sport Teams	9,540,078	9,859,611	8,446,441	8,128,599	-3.2%	16.7%	3.9%	5.5%	(319,533)
Arts, Entertainment, and Other Recreation	6,448,855	6,356,412	5,558,228	5,231,298	1.5%	14.4%	6.2%	7.2%	92,443
Other Sectors	61,116,420	57,586,381	53,319,948	49,942,700	6.1%	8.0%	6.8%	7.0%	3,530,040
<i>Membership Organizations</i>	16,467,686	16,325,538	15,052,942	14,349,800	0.9%	8.5%	4.9%	4.7%	142,147
<i>Employment/Outsourcing Agencies</i>	14,343,739	12,423,269	12,248,675	11,004,641	15.5%	1.4%	11.3%	9.2%	1,920,470
<i>Security and Investigation Services</i>	3,934,347	3,905,487	3,518,171	3,419,696	0.7%	11.0%	2.9%	4.8%	28,860
<i>Services to Buildings</i>	5,275,564	5,255,843	5,167,019	5,021,511	0.4%	1.7%	2.9%	1.7%	19,721
<i>Miscellaneous Sectors</i>	21,095,085	19,676,243	17,333,141	16,147,051	7.2%	13.5%	7.3%	9.3%	1,418,842
Government	101,650,673	95,487,231	85,545,830	84,080,400	6.5%	11.6%	1.7%	6.5%	6,163,443
<i>State Government (PA)</i>	5,338,470	5,199,402	5,075,007	5,020,048	2.7%	2.5%	1.1%	2.1%	139,068
<i>City, School District, Local Quasi Govt.</i>	55,937,809	51,314,891	50,071,314	48,772,385	9.0%	2.5%	2.7%	4.7%	4,622,918
<i>Federal Government (includes US Post Office)</i>	39,391,968	38,000,125	29,416,604	29,441,951	3.7%	29.2%	-0.1%	10.2%	1,391,843
<i>Other Governments</i>	982,427	972,813	982,905	846,016	1.0%	-1.0%	16.2%	5.1%	9,614
Unclassified Accounts	1,782,075	784,812	707,912	1,173,631	127.1%	10.9%	-39.7%	14.9%	997,262
Total from Taxpayer Database (TIPS)	\$801,282,807	\$762,274,202	\$723,996,535	\$687,502,799	5.1%	5.3%	5.3%	5.2%	\$39,008,605
Total from City's Accounting System (FAMIS)	\$801,261,889	\$762,566,178	\$722,588,351	\$687,356,364	5.1%	5.5%	5.1%	5.2%	\$38,695,711

Table 3: Wage Tax by Industry- Calendar Year to Date (January thru November)						City of Philadelphia Revenue Department			
NAICS Sector / Industry Group	CYTD 2017	CYTD 2016	CYTD 2015	CYTD 2014	CYTD Growth Rate (Jan - Nov)			3-Yr Annualized (CYTD 14-17)	Difference (CYTD 17-16)
					2017	2016	2015		
Construction	62,470,903	60,145,026	54,354,777	48,179,900	3.9%	10.7%	12.8%	9.0%	2,325,877
Manufacturing (includes headquarter offices & factories)	104,965,110	104,904,237	103,279,361	100,857,260	0.1%	1.6%	2.4%	1.3%	60,873
Chemicals, Petroleum Refining	19,641,743	19,362,434	19,176,540	18,674,882	1.4%	1.0%	2.7%	1.7%	279,309
Pharmaceuticals	21,872,369	22,023,164	22,371,875	22,443,072	-0.7%	-1.6%	-0.3%	-0.9%	(150,795)
Transportation Equipment	9,748,353	10,383,715	9,709,723	9,580,731	-6.1%	6.9%	1.3%	0.6%	(635,362)
Food & Beverage Products	15,360,961	14,833,625	14,002,784	13,247,186	3.6%	5.9%	5.7%	5.1%	527,336
Machinery, Electronic, and Other Electric Equipment	8,387,277	8,175,325	8,447,409	8,611,357	2.6%	-3.2%	-1.9%	-0.9%	211,952
Metal Manufacturing	8,570,481	8,529,782	7,803,073	7,388,688	0.5%	9.3%	5.6%	5.1%	40,699
Miscellaneous Manufacturing	21,383,927	21,596,193	21,767,956	20,911,344	-1.0%	-0.8%	4.1%	0.7%	(212,266)
Public Utilities	13,365,241	12,678,693	11,879,549	12,141,839	5.4%	6.7%	-2.2%	3.3%	686,548
Transportation and Warehousing	58,059,345	55,636,374	53,212,569	50,860,023	4.4%	4.6%	4.6%	4.5%	2,422,971
Telecommunication	48,561,797	42,954,272	38,134,467	36,131,141	13.1%	12.6%	5.5%	10.4%	5,607,525
Publishing, Broadcasting, and Other Information	22,076,825	22,359,674	22,215,340	21,172,978	-1.3%	0.6%	4.9%	1.4%	(282,849)
Wholesale Trade	40,740,128	39,414,489	37,541,033	36,460,783	3.4%	5.0%	3.0%	3.8%	1,325,639
Retail Trade	83,549,227	82,545,309	78,040,596	74,116,834	1.2%	5.8%	5.3%	4.1%	1,003,918
Banking & Credit Unions	37,121,298	34,977,555	33,993,148	32,839,619	6.1%	2.9%	3.5%	4.2%	2,143,743
Securities / Financial Investments	50,504,952	47,451,602	48,469,809	40,115,005	6.4%	-2.1%	20.8%	8.0%	3,053,350
Insurance	60,462,261	60,757,677	58,317,306	56,860,345	-0.5%	4.2%	2.6%	2.1%	(295,416)
Real Estate, Rental and Leasing	26,264,157	25,142,634	24,001,833	22,982,850	4.5%	4.8%	4.4%	4.5%	1,121,523
Health and Social Services	363,093,764	343,125,509	320,821,844	307,800,581	5.8%	7.0%	4.2%	5.7%	19,968,255
Hospitals	188,310,651	177,754,341	169,307,299	164,066,923	5.9%	5.0%	3.2%	4.7%	10,556,310
Doctors, Dentists, and Other Health Practitioners	44,081,220	43,066,818	40,583,303	39,118,290	2.4%	6.1%	3.7%	4.1%	1,014,402
Outpatient Care Centers and Other Health Services	58,187,468	54,684,154	49,378,864	46,355,087	6.4%	10.7%	6.5%	7.9%	3,503,314
Nursing & Personal Care Facilities	35,133,809	34,514,224	32,140,880	31,377,562	1.8%	7.4%	2.4%	3.8%	619,585
Social Services	37,380,616	33,105,972	29,411,497	26,882,719	12.9%	12.6%	9.4%	11.6%	4,274,644
Education	165,256,003	159,642,920	152,502,182	144,150,446	3.5%	4.7%	5.8%	4.7%	5,613,083
College and Universities	128,844,529	124,273,726	118,307,529	110,653,117	3.7%	5.0%	6.9%	5.2%	4,570,803
Elementary, Secondary Schools (except public schools)	25,196,025	23,937,480	23,308,067	22,989,192	5.3%	2.7%	1.4%	3.1%	1,258,545
Other Educational Services	11,215,450	11,431,713	10,886,586	10,508,138	-1.9%	5.0%	3.6%	2.2%	(216,264)
Professional Services	205,094,445	191,007,985	179,780,455	166,448,459	7.4%	6.2%	8.0%	7.2%	14,086,460
Legal Services	72,097,358	66,133,277	63,921,192	61,642,548	9.0%	3.5%	3.7%	5.4%	5,964,081
Management Consulting	37,323,560	37,256,666	36,576,750	32,963,246	0.2%	1.9%	11.0%	4.2%	66,895
Engineering & Architectural Services	21,578,329	20,716,261	19,280,605	17,363,957	4.2%	7.4%	11.0%	7.5%	862,068
Computer	18,182,970	16,686,741	15,759,503	14,534,356	9.0%	5.9%	8.4%	7.8%	1,496,229
Accounting, Auditing, Bookkeeping	22,550,420	21,577,333	18,903,398	16,974,298	4.5%	14.1%	11.4%	9.9%	973,087
Advertising and Other Professional Services	33,361,808	28,637,707	25,339,008	22,970,055	16.5%	13.0%	10.3%	13.2%	4,724,101
Hotels	10,182,206	10,343,113	9,933,971	10,255,564	-1.6%	4.1%	-3.1%	-0.2%	(160,907)
Restaurants	49,532,549	47,264,613	43,311,052	40,147,982	4.8%	9.1%	7.9%	7.3%	2,267,936
Sport Teams	18,342,209	18,645,946	16,508,890	16,200,799	-1.6%	12.9%	1.9%	4.2%	(303,737)
Arts, Entertainment, and Other Recreation	13,858,771	13,645,054	11,993,234	11,450,685	1.6%	13.8%	4.7%	6.6%	213,717
Other Sectors	130,348,544	123,033,506	114,904,955	105,616,842	5.9%	7.1%	8.8%	7.3%	7,315,038
Membership Organizations	35,724,413	34,620,137	32,057,308	30,515,913	3.2%	8.0%	5.1%	5.4%	1,104,276
Employment/Outsourcing Agencies	30,248,735	27,208,398	26,200,347	23,072,312	11.2%	3.8%	13.6%	9.4%	3,040,337
Security and Investigation Services	8,384,465	8,174,897	7,519,236	7,186,338	2.6%	8.7%	4.6%	5.3%	209,568
Services to Buildings	10,673,392	11,152,416	11,027,271	10,688,294	-4.3%	1.1%	3.2%	0.0%	(479,024)
Miscellaneous Sectors	45,317,540	41,877,658	38,100,793	34,153,985	8.2%	9.9%	11.6%	9.9%	3,439,882
Government	207,810,225	197,999,421	188,643,791	195,382,242	5.0%	5.0%	-3.4%	2.1%	9,810,803
State Government (PA)	11,789,929	11,373,704	11,275,388	10,942,237	3.7%	0.9%	3.0%	2.5%	416,225
City, School District, Local Quasi Govt.	114,020,348	108,358,004	107,511,155	106,574,080	5.2%	0.8%	0.9%	2.3%	5,662,344
Federal Government (includes US Post Office)	79,861,559	76,161,517	67,669,060	76,052,519	4.9%	12.5%	-11.0%	1.6%	3,700,042
Other Governments	2,138,388	2,106,196	2,188,188	1,813,406	1.5%	-3.7%	20.7%	5.6%	32,192
Unclassified Accounts	2,715,928	1,548,433	1,457,766	2,435,084	75.4%	6.2%	-40.1%	3.7%	1,167,496
Total from Taxpayer Database (TIPS)	\$1,774,375,888	\$1,695,224,043	\$1,603,297,929	\$1,532,607,259	4.7%	5.7%	4.6%	5.0%	\$79,151,845
Total from City's Accounting System (FAMIS)	\$1,771,389,484	\$1,693,351,641	\$1,601,073,290	\$1,532,996,367	4.6%	5.8%	4.4%	4.9%	\$78,037,843